

SR 50 (Clermont) Operational Improvements Study

MPO Board Presentation

February 25, 2026

Study Background

- Request made by City for LSMPO's 2024 List of Priority Projects
- Address safety and traffic operational issues on SR 50 between 12th Street (CR 561) and US 27
- 2020 FDOT Corridor Study and Concept Plans



SR 50 Multi Modal Operational Improvement Study

June 19, 2024

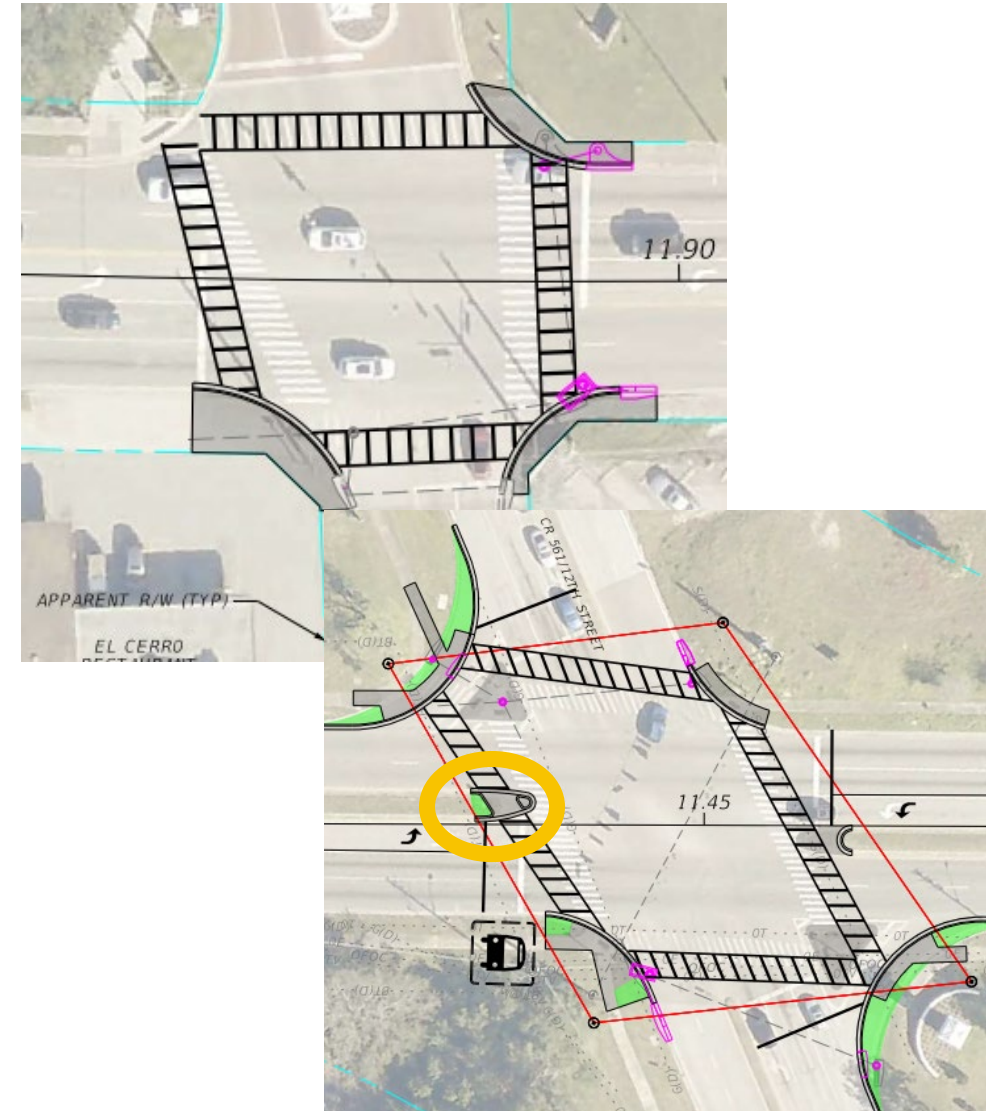
Study Scope Overview

- **Data Collection & Analysis**
 - Gather traffic, crash, and other relevant data
 - Field reviews and travel pattern analysis
- **Short-Term Recommendations**
 - Coordinate with City and FDOT for potential additional improvements with upcoming resurfacing project
- **Long-Term Corridor Options**
 - Identify future mobility improvements (e.g. intersection upgrades, right-turn lanes)
- **Stakeholder & Community Engagement**

FDOT Resurfacing Project (454198-1)

Resurfacing scope includes the following:

- Resurfacing SR 50
- Improvements to 12th St Intersection
- Pedestrian Improvements at 8th St, East Ave, Bloxam Ave
- Signal & Pedestrian Improvements at 5th St
- Cantilever Sign East of Bloxam Warning of Lane Drop
- Video Detection & Intersection Lighting
- Extend Fiber Optic Cable throughout Corridor



Potential Improvements



Midblock Crossing



Enhanced Bus Stops



Patterned Pavement Crosswalks



Leading Pedestrian Interval



Pedestrian Crossing Signage

Other City Planning Efforts

- Downtown Form-Based Code
- Comprehensive Plan Update
 - Attended Charette on 2/20
- Appropriations Request
 - Pedestrian Crossing Improvements

Clermont Charette Schedule

A Workshop for the Comprehensive Plan Update
February 19–23, 2026, in Council Chambers at Clermont City Hall

	2/19 THURSDAY	2/20 FRIDAY	2/21 SATURDAY	2/22 SUNDAY	2/23 MONDAY
9:00 AM	DPZ Team Kick-Off 9 – 10	DPZ Team Briefing 9 – 10	DPZ Team Briefing 9 – 10	DPZ Team Briefing 9 – 10	DPZ Team Briefing 9 – 10
10:00 AM	Meeting 1: Citywide Land Use & Zoning 10 – 11:30	Meeting 3: Transportation, Utilities & Capital Infrastructure 10 – 11:30	Meeting 5: Economic Development 10 – 11:30	Open Studio 10 – Noon	City Staff and DPZ Debrief 10 – 1
11:00 AM	Open Studio 10 – Noon	Open Studio 10 – Noon	Open Studio 10 – Noon		
12:00 PM	Lunch break Noon – 1	Lunch break Noon – 1	Lunch break Noon – 1	Lunch break Noon – 1	Lunch break Noon – 1
1:00 PM	Meeting 2: NWQ: Downtown Focus 1 – 2:30	Meeting 4: Recreation & Conservation 1 – 2:30	Meeting 6: Fiscal Productivity 1 – 2:30	City Staff and DPZ Debrief Noon – 5	City Staff and DPZ Debrief 1 – 5:30
2:30 PM	City Staff and DPZ Debrief 2:30 – 5:30	City Staff and DPZ Debrief 2:30 – 5	City Staff and DPZ Debrief 2:30 – 5		
4:30 PM	Opening Presentation 5:30 – 7 Clermont City Center	Open Studio 5 – 6:30	Work-in-Progress / Open House 5 – 6:30 Council Chambers, City Hall	Open Studio 5 – 6:30	Studio Take Down 4:30 – 5:30
5:30 PM					Closing Presentation 5:30 – 7 Clermont City Center

PUBLIC PRESENTATION – Visitors encouraged
OPEN TO THE PUBLIC – Visitors welcome
CITY STAFF AND DPZ DEBRIEF – Visitors may not receive attention
 Update 2/5/2026

Existing Conditions Analysis

Intersection	Control Type	Approach	PM Peak Hour		
			Level of Service (overall delay)	Max V/C Movement	Max V/C Ratio
1 12th Street (N/S) & SR 50th (E/W)	Signalized	EB	C	EBL	0.74
		WB	B	WBL	0.86
		NB	E	NBL	0.74
		SB	E	SBL	0.70
		Overall	C (25.2 sec)	WBL	0.86
2 8th Street (N/S) & SR 50th (E/W)	Signalized	EB	C	EBL	0.67
		WB	A	WBT/R	0.86
		NB	E	NBT/R	0.19
		SB	E	SBL/T	0.66
		Overall	B (16.3 sec)	WBT/R	0.86
3 5th Street (N/S) & SR 50 (E/W)	Signalized	EB	A	EBT/R	0.65
		WB	A	WBT/R	0.92
		NB	E	NBL	0.24
		SB	E	SBL	0.41
		Overall	A (7.1 sec)	WBT/R	0.92
4 East Avenue (N/S) & SR 50 (E/W)	Signalized	EB	D	EBL	0.81
		WB	D	WBT/R	0.94
		NB	E	NBT/R	0.26
		SB	F	SBT/R	0.87
		Overall	D (44.5 sec)	WBT/R	0.94
5 Bloxam Ave (N/S) & SR 50 (E/W)	Signalized	EB	B	EBL	0.65
		WB	C	WBL	1.42
		NB	F	NBL	1.04
		SB	F	SBL	1.07
		Overall	D (40.5 sec)	WBL	1.42



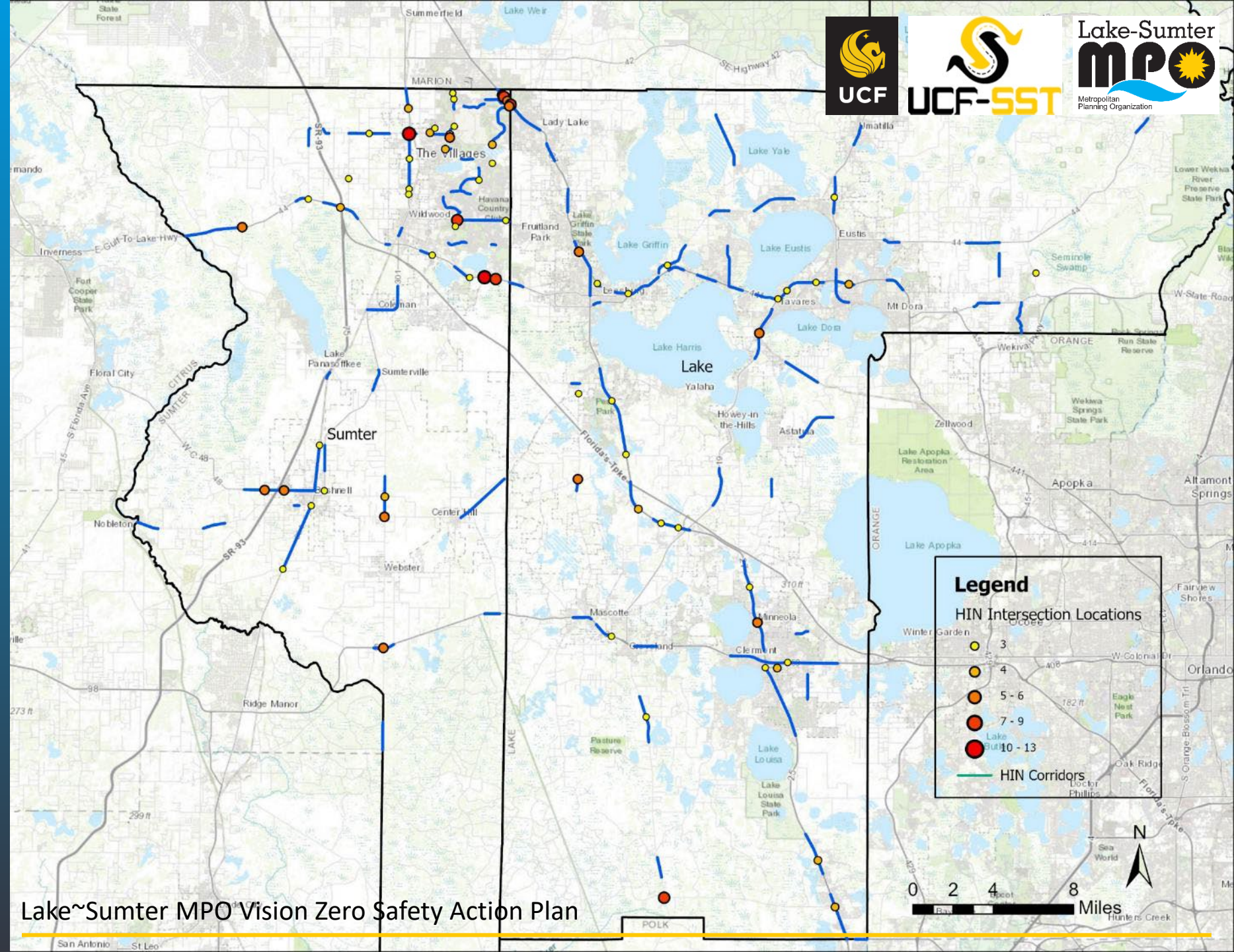
Year/Time Period	Existing			
	Speed(mph)		LOS	
	EB	WB	EB	WB
AM Peak Hour				
2025	26.5	27.3	C	B
PM Peak Hour				
2025	27.9	23.4	B	C

Existing Conditions Observations

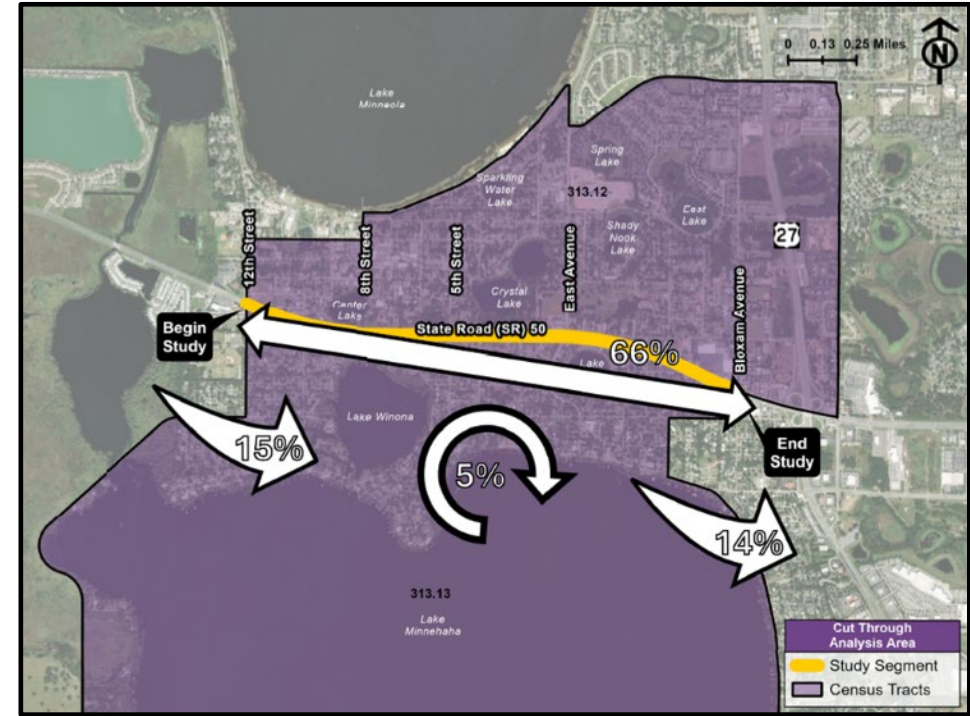
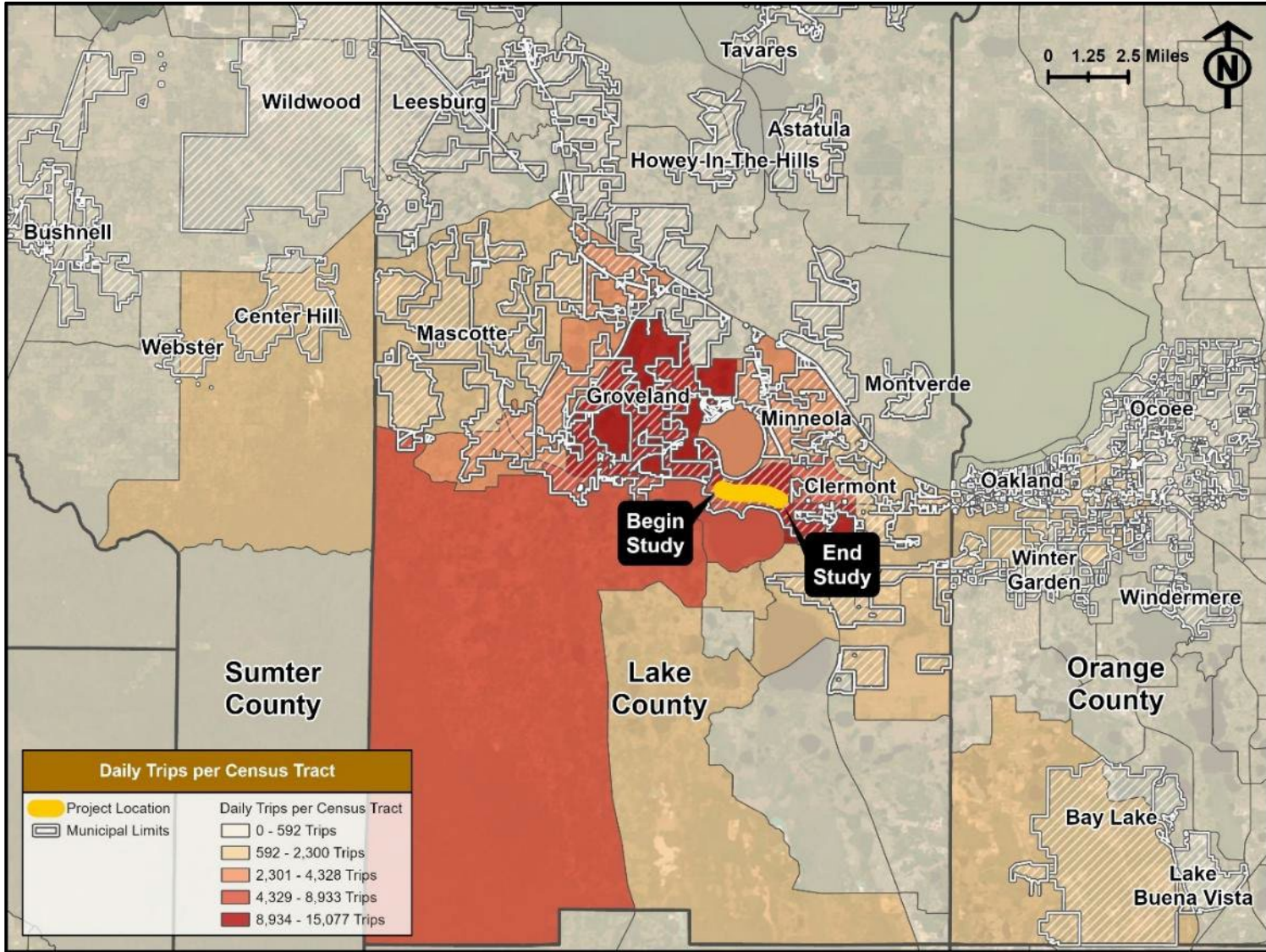


OVERALL HIGH-INJURY NETWORK

- 108 corridors
- 70 intersections



Origin Destination Analysis



Continued Community Engagement

In the near-term:

- City staff and Council champions
- Project webpage and info on City website

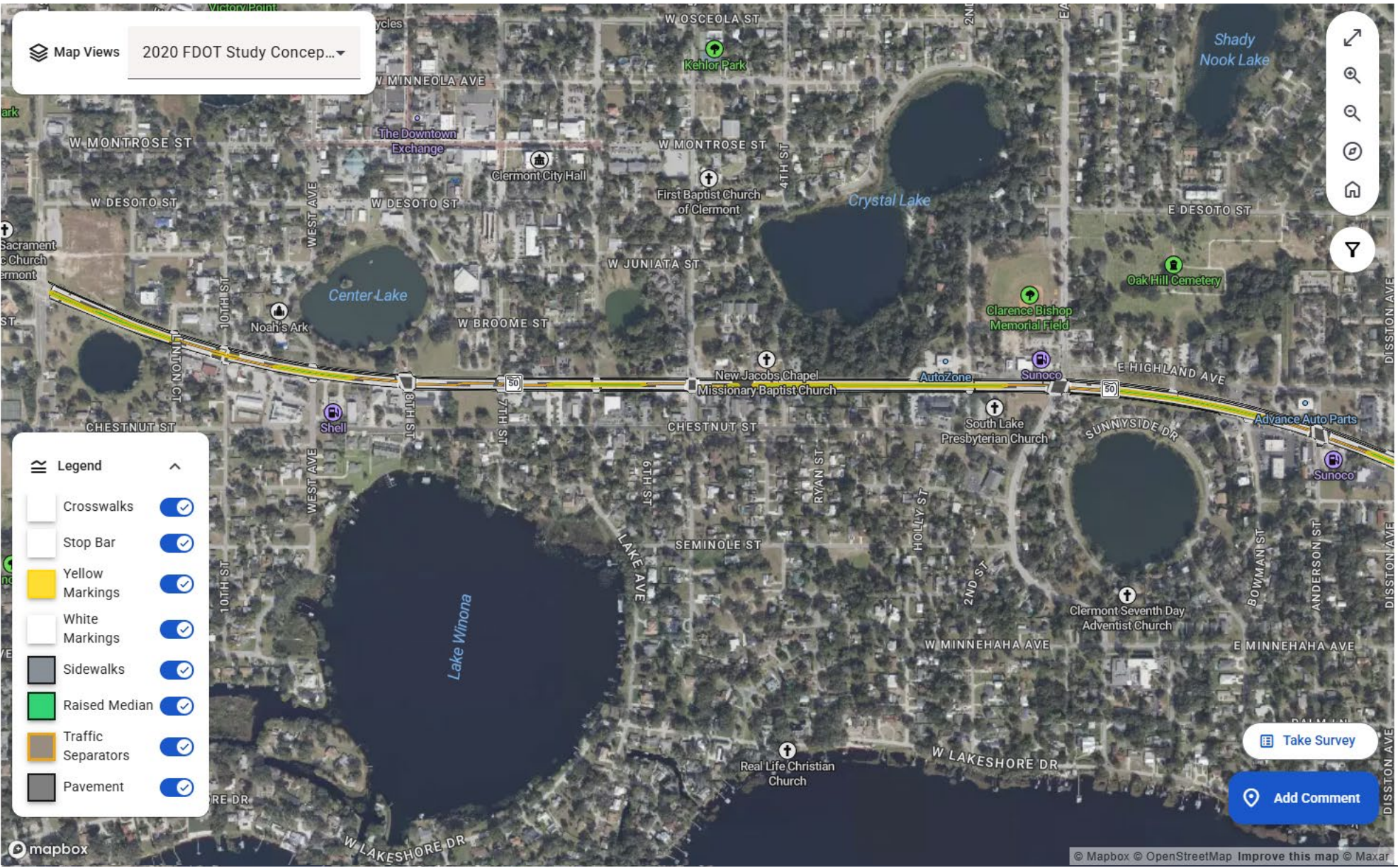
For the long-term recommendations:

- Online engagement – interactive map and survey
- Attend Community Events like First Saturday Family Food Fest and Sunday Farmer's Market
- Continued collaboration with City's Comp Plan/LDC Update outreach



- Project Info
- Map Style
- Legend
- Help
- Report Issue
- Language

Map Views 2020 FDOT Study Concep...



Map navigation controls including zoom in, zoom out, home, and location sharing icons.

About the project



The [Lake-Sumter Metropolitan Planning Organization \(LSMPO\)](#), in partnership with the City of Clermont, is conducting the SR 50 Multimodal Operational Improvements Study. This study will evaluate the segment of SR 50 between 12th Street (CR 561) and US 27. Its goal is to identify potential short-term and long-term improvements, including those that address operations, safety, access management, multimodal needs, and other enhancements for the corridor. Recommendations developed through this effort are conceptual in nature and designed to guide interagency coordination, funding decisions, and future project development. The study process also includes coordination between the City and the Florida Department of Transportation (FDOT).

Take Survey

Add Comment

Questions?