



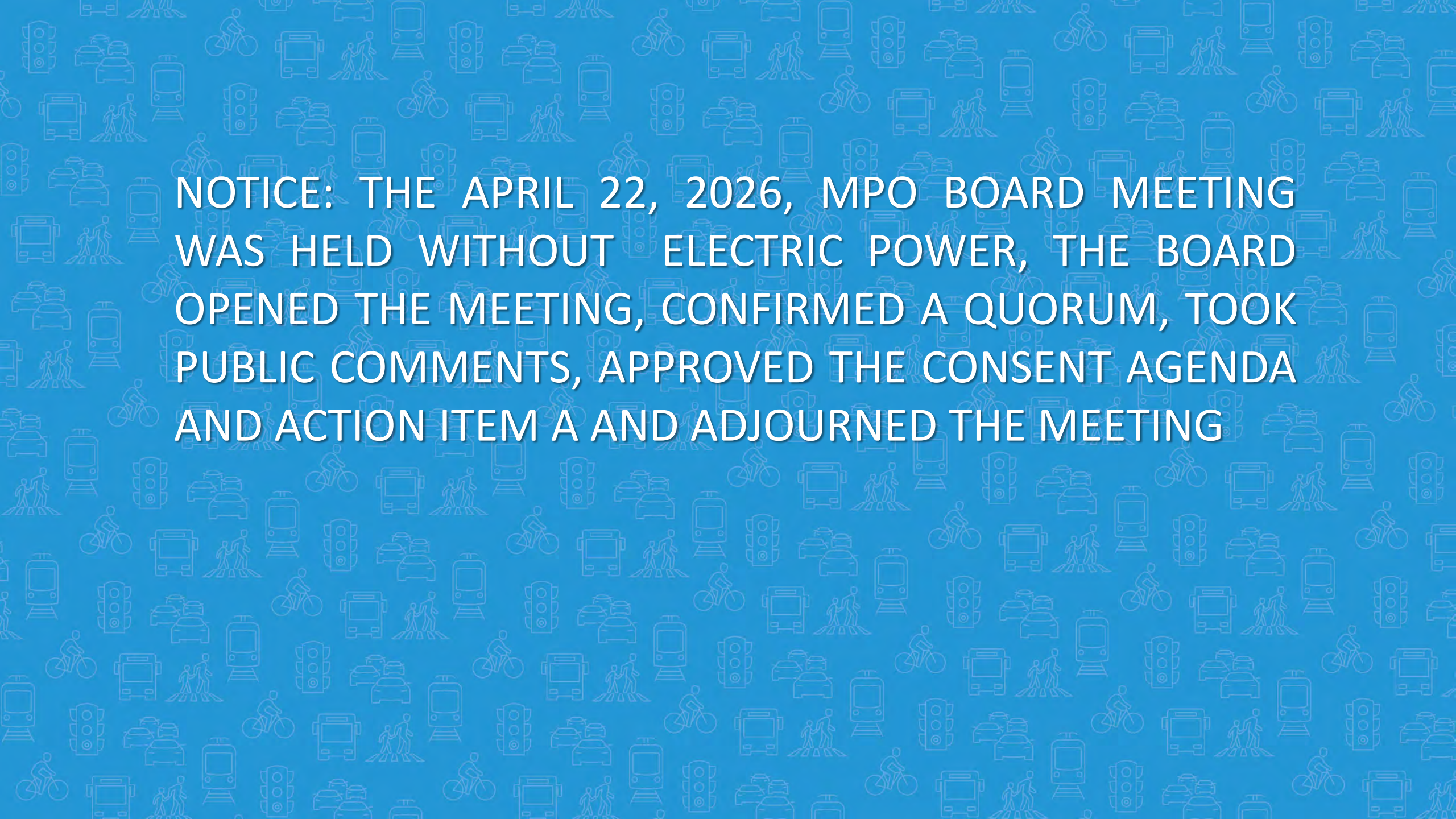
Lake~Sumter MPO

April 22, 2026

Governing Board Meeting




Michael Woods, Executive Director
Doris LeMay, Financial Coordinator

The background is a solid blue color with a repeating pattern of white line-art icons. The icons include a bicycle, a bus, a car, a train, a pedestrian, and a traffic light, arranged in a grid-like fashion.

NOTICE: THE APRIL 22, 2026, MPO BOARD MEETING
WAS HELD WITHOUT ELECTRIC POWER, THE BOARD
OPENED THE MEETING, CONFIRMED A QUORUM, TOOK
PUBLIC COMMENTS, APPROVED THE CONSENT AGENDA
AND ACTION ITEM A AND ADJOURNED THE MEETING

Call to Order by Chair

- Invocation / Pledge of Allegiance 
- Proper Noticing
- Roll Call – Determination of Quorum
- Motion to allow virtual voting by members
- Proposed revisions to Today's Agenda
- Chair's Announcements

OPPORTUNITY FOR PUBLIC COMMENT

ON AGENDA ITEMS OR GENERAL COMMENTS

At this time, the Board will hear questions, comments, and concerns from members of the public.

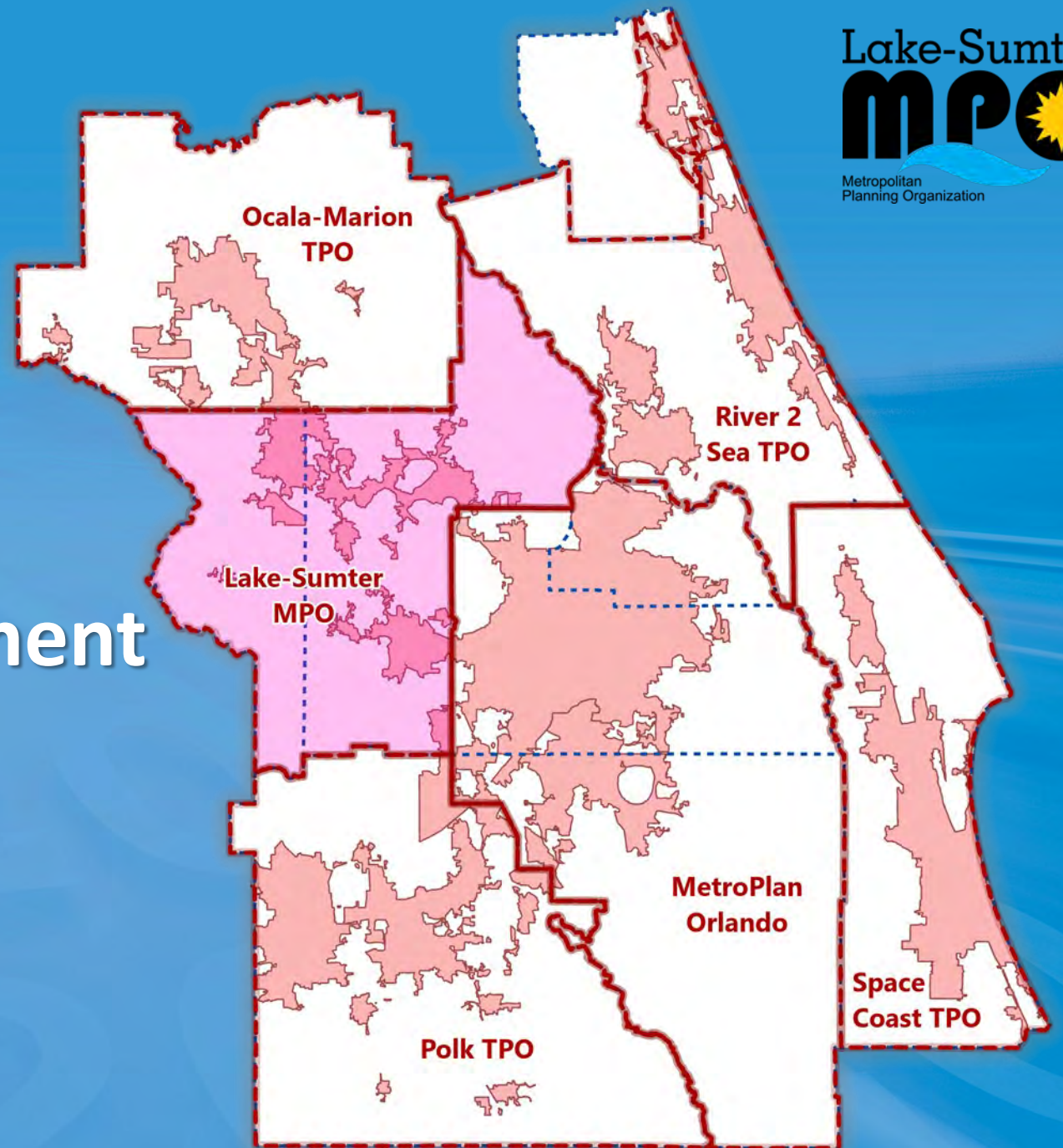
- Please note:
- If a topic raised is not listed on today's agenda, the Board will not act during this meeting.
- Questions may be addressed by staff or referred to for appropriate follow-up.
- If further action is warranted, the item may be scheduled for a future Governing Board agenda.
- Public comment is limited to three minutes per person.
- We appreciate your participation and engagement in the transportation planning process.

Consent approval is requested of the following items:

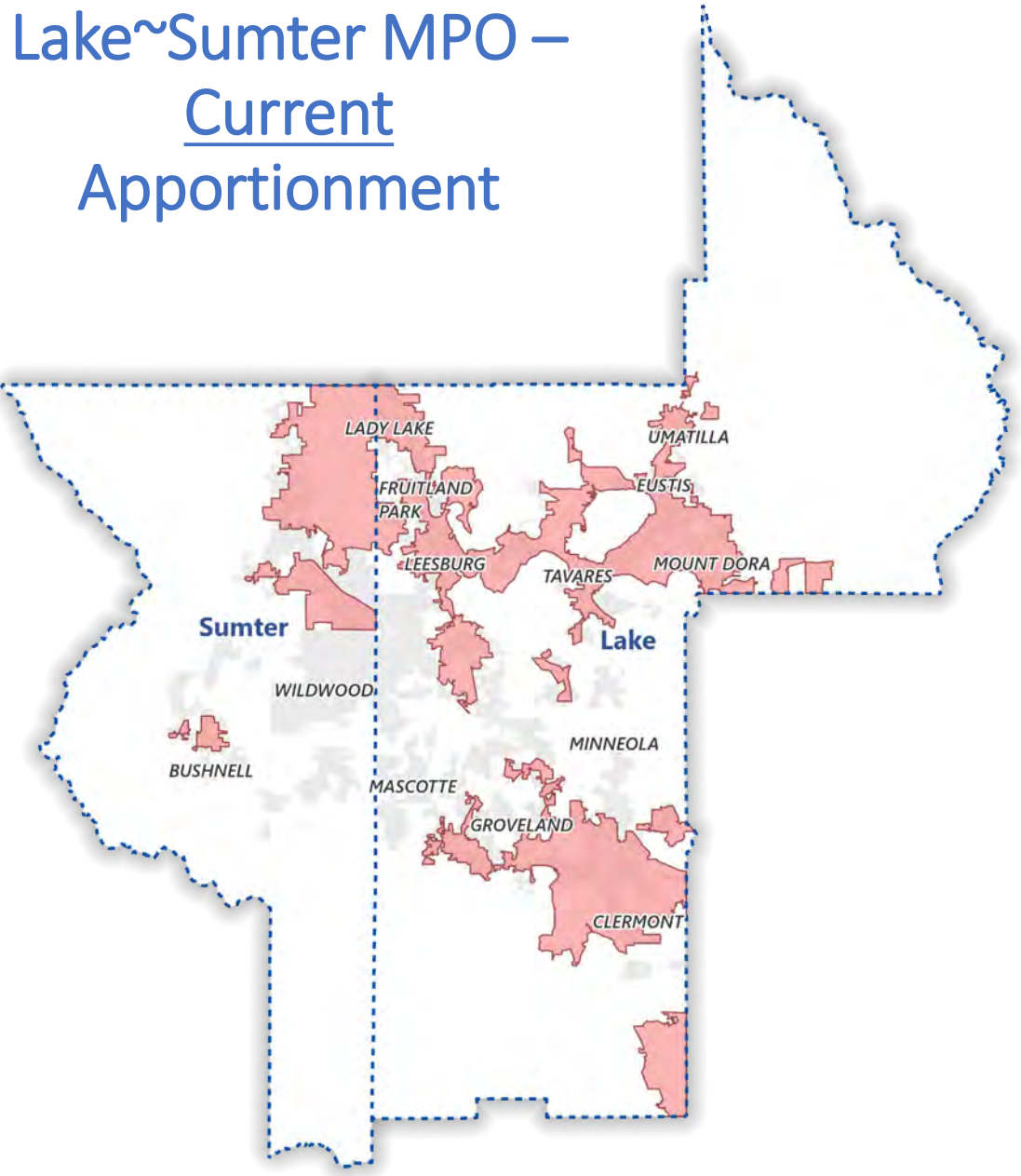
- A. Consideration of approval for the February 25, 2026, MPO Governing Board Meeting Minutes
- B. Consideration of Approval for the Quarterly Financial Report as presented by Milestone Professional Services.
- C. Authorization for the Chair to sign the Executive Director's timesheets and mileage reports for January – March 2026.
- D. Consideration of Approval of Resolution 2026-4 adopting the Lake~Sumter MPO Unified Planning Work Program (UPWP) FY 2027-2028.
- E. Consideration of Approval of the FDOT Metropolitan Planning Organization Agreement for July 1, 2026 – June 30, 2028, Authorizing Execution by Executive Director.

ACTION ITEM A:

**Adoption of Resolution
2026-5 – Approval and
Submittal of the
Lake~Sumter MPO
Membership Apportionment
Plan to the Governor of
Florida.**



Lake~Sumter MPO – Current Apportionment



Lake County

Lake County

Lake County

Lake County

Lake County

City of Clermont

City of Leesburg

City of Eustis

City of Tavares

City of Mt. Dora

City of Lady Lake

City of Groveland

Lake At -Large

Astatula, Fruitland Park, Minneola,
Howey-in-the-Hills, Mascotte,
Montverde & Umatilla –annual
rotation of the vote

Sumter County

Sumter County

Sumter At -Large

Bushnell, Center Hill, Coleman,
Webster & Wildwood – annual
rotation of the vote

14 permanent Voting
Members
2 At-Large Rotating
Voting Members
14 Non-Voting
Members

Option 1 – No Change

Option 2 – Add Wildwood as a permanent Voting member replacing the Sumter at Large Vote, keeping the existing 16 voting members

Option 3 – Add Wildwood as a permanent Voting member and keep the Sumter at large Vote with the remaining 4 cities in Sumter County

2025 BEBR Estimate

Lake~Sumter MPO Board Approtationment -2025 (Proposed)

Jurisdiction	2025 Population			2025 Voting Membership (Proposed)	
	Number	% of County	Distribution	Number	Distribution
Lake County					
UNINCORPORATED	200,310	45%	33%	5	31%
Clermont	51,042	11%	8%	1	6%
Leesburg	37,541	8%	6%	1	6%
Eustis	24,477	5%	4%	1	6%
Tavares	21,869	5%	4%	1	6%
Mount Dora	18,896	4%	3%	1	6%
Lady Lake	16,978	4%	3%	1	6%
Groveland	23,827	5%	4%	1	6%
Lake Co. - At Large				1	6%
	394,940		65%	13	81%
Sumter County					
UNINCORPORATED	119,221	73%	20%	2	13%
***Wildwood	36,783	23%	6%	1	6%
	156,004	96%	26%	3	19%
Lake County Total Population	445,324	73%	65%	13	81%
Sumter County Total Poulation	162,493	27%	26%	3	19%
Total	607,817	100%	91%	16	100%

*Maitain existing MPA boundary and preserve existing Board Members/Seats

** City of Clermont >50k population

*** Wildwood is largest City with remaining incorporated areas representing 4% of Sumter County

Lake~Sumter MPO – Recommended Apportionment

Apportionment Rules:

- ✓ local government representing at least 75%, including the largest incorporated city by population
- ✓ consist of at least 5 but not more than 25 apportioned members
- ✓ 1 representative voting member for each city above 50,000
- ✓ MPO Governing Board, County Commissioners shall compose at least one-third of the MPO Governing Board membership

Lake County

Lake County

Lake County

Lake County

Lake County

City of Clermont

City of Leesburg

City of Eustis

City of Tavares

City of Mt. Dora

City of Lady Lake

City of Groveland

Lake At -Large

Astatula, Fruitland Park,
Minneola, Howey-in-the-Hills,
Mascotte, Montverde &
Umatilla

Sumter County

Sumter County

City of Wildwood

Sumter At -Large

Bushnell, Center Hill, Coleman,
Webster

15 Permanent Voting
Members
2 At-Large Rotating
Voting Members
14 Non-Voting
Members

A blurred background image of a meeting room. Several people are visible, with their hands raised in the air, suggesting an active discussion or a vote-taking session. The room has large windows in the background, and the overall atmosphere is professional and collaborative.

Questions?

Motion to Approve Resolution 2026-5
MPO Membership Apportionment Plan



LAKE-SUMTER MPO VISION ZERO ACTION PLAN

LAKE-SUMTER VISION ZERO ACTION PLAN

April 2026



DISCUSSION ITEM A:

April 22, 2026

WHAT IS VISION ZERO & SS4A?



THE SAFE SYSTEM APPROACH



Vision Zero is a holistic approach to road safety to achieve **zero traffic fatalities and serious injuries**. This approach can be called the Safe System Approach.

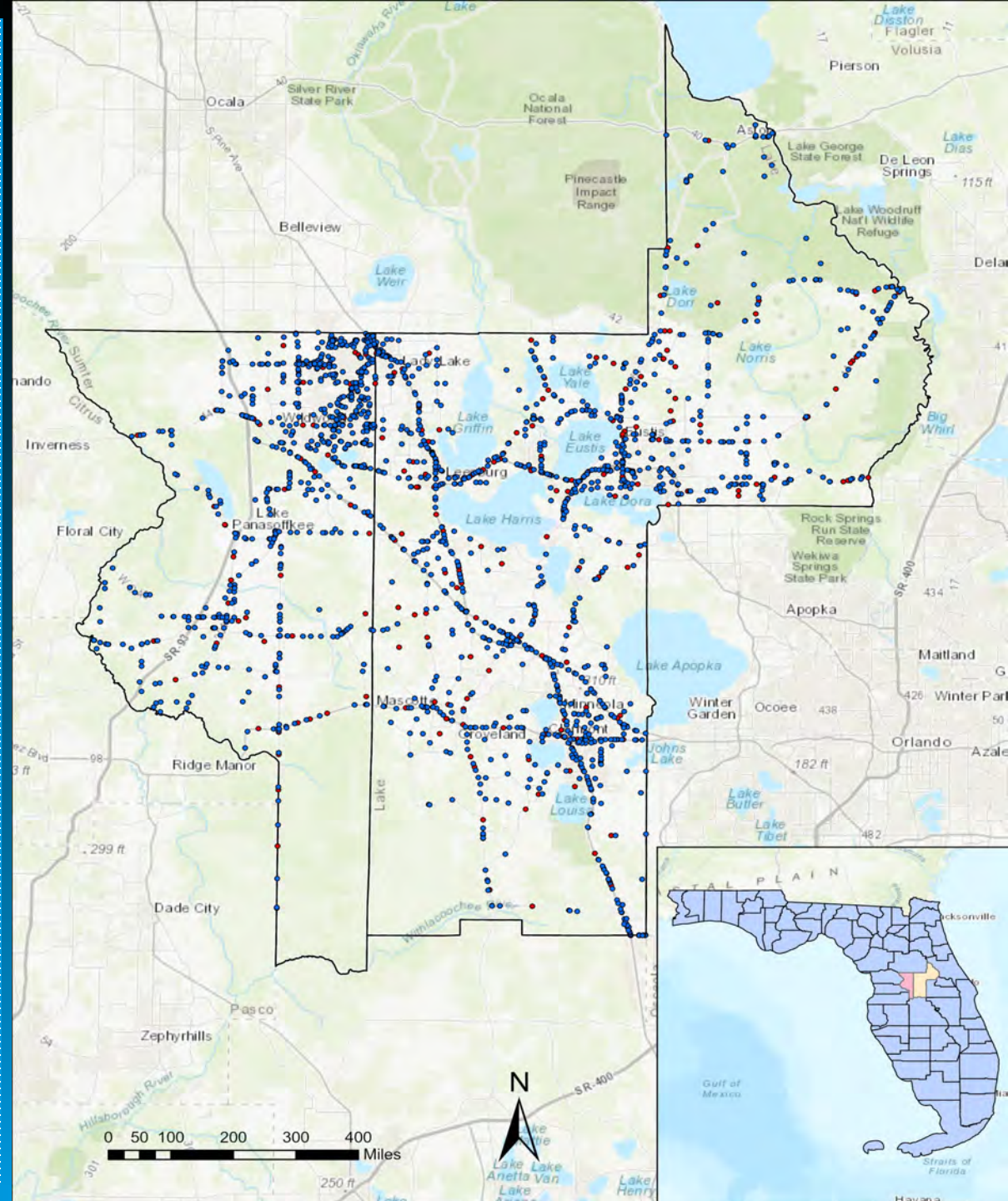
Safe Streets and Roads for All (SS4A) is a federal program designed to fund regional, local, and Tribal initiatives through grants to prevent traffic fatalities and serious injuries.

GOAL:
**ZERO FATAL AND SERIOUS
INJURY CRASHES
BY 2050 IN LAKE-SUMTER
MPO REGION**





CRASH ANALYSIS



Killed & Serious Injury (KA) Quick Facts

KA is killed or serious injury.

Killed (K) refers to a fatal injury that results in death at the scene or within 30 days after the motor vehicle crash in which the injury occurs.

Serious Injury (A) is any injury other than fatal that results in one or more of the following: Severe laceration, significant loss of blood, broken or distorted extremity, crush injuries, severe skull, chest, or abdominal injury other than bruises or minor lacerations, significant burns, unconsciousness when taken from the crash scene, paralysis.

Source: Florida HSMV Uniform Traffic Crash Report Manual,
<https://www.flhsmv.gov/pdf/courts/crash/crashmanualcomplete.pdf>

4,539 Killed & Serious Injury Crashes on
Surface Streets* (2015-2024)

707 Fatal Crashes (K)

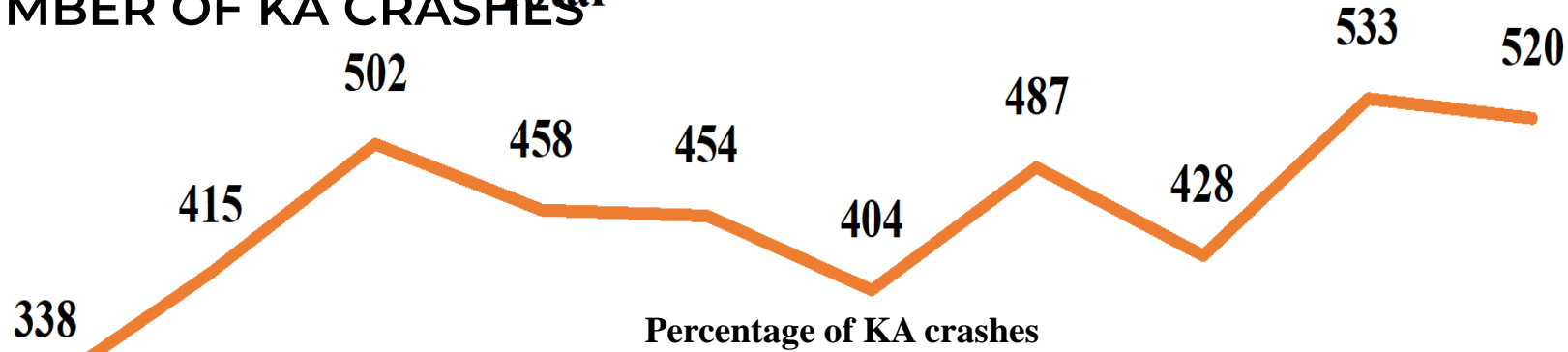
3,832 Serious Injury Crashes (A)

\$11.1 Billion Economic impact to the
Lake-Sumter region.

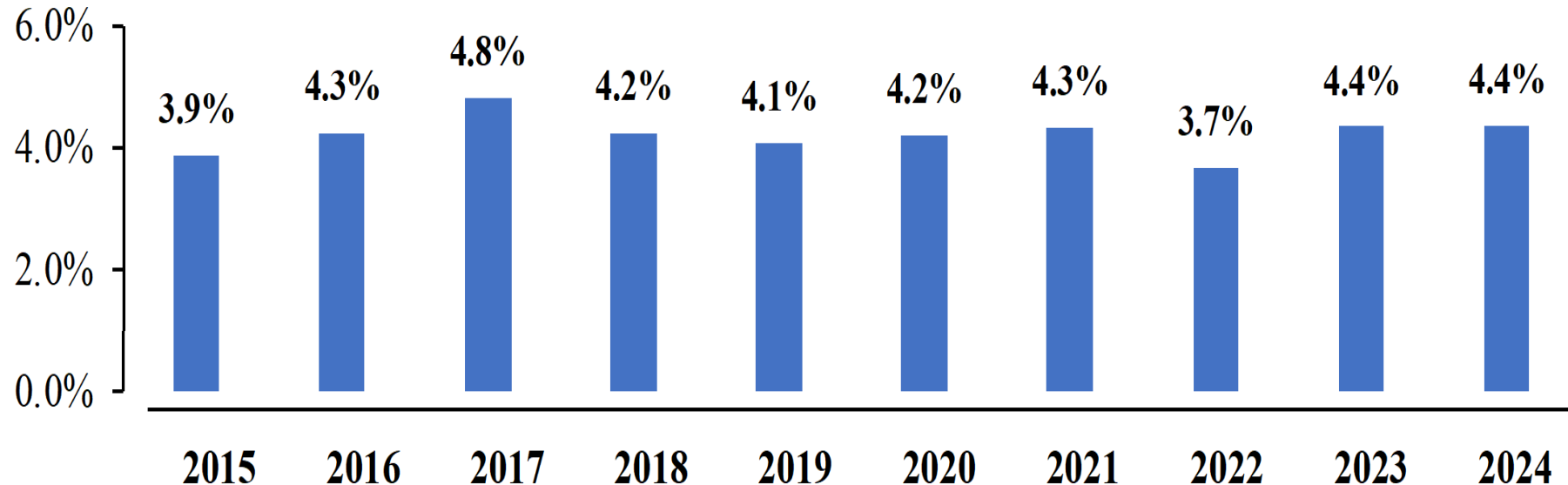
TEN-YEARS TREND FOR KA CRASHES



TOTAL NUMBER OF KA CRASHES*



KA CRASHES / ALL CRASHES



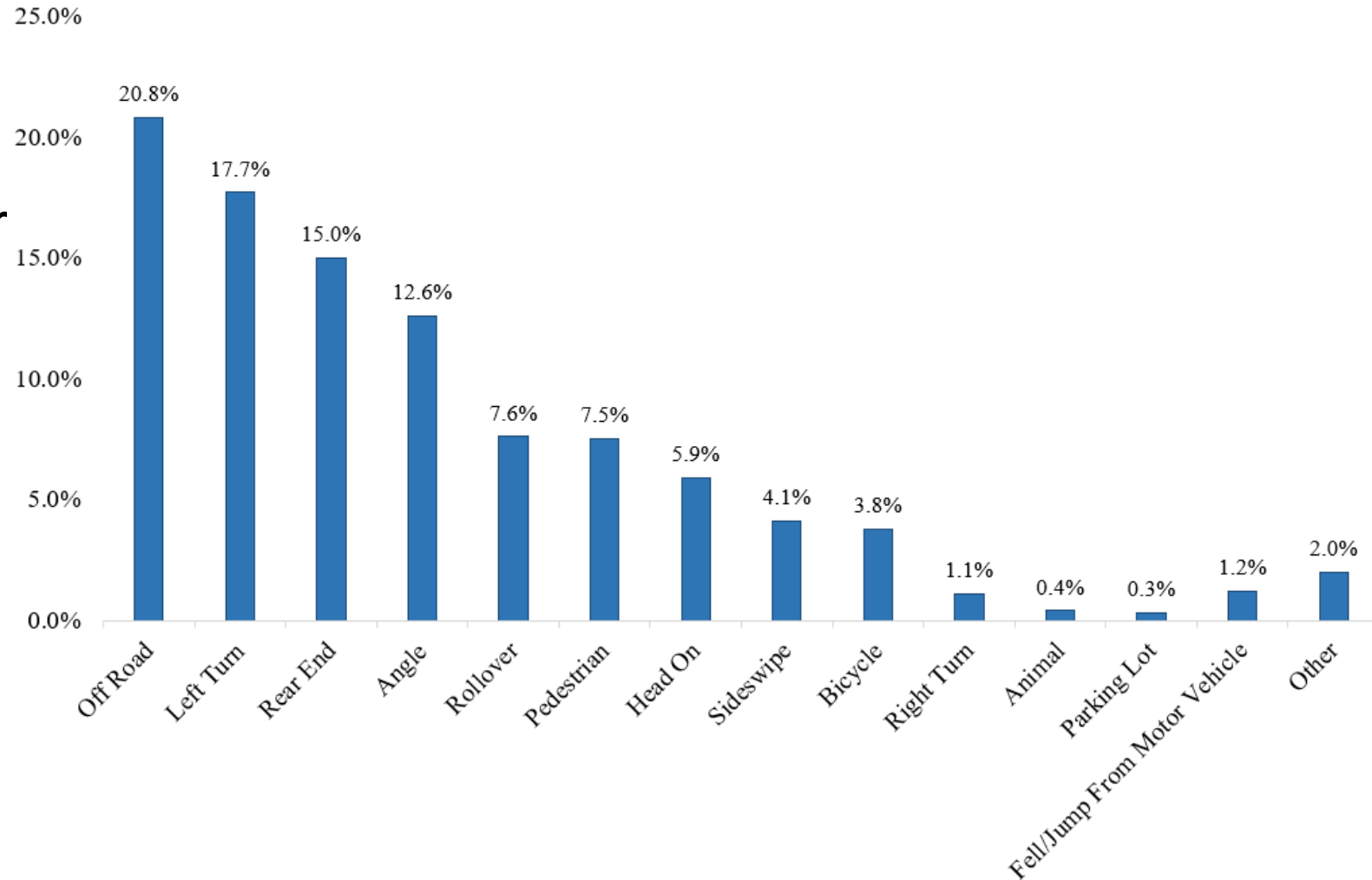
- For Comparison:**
- State of Florida 10-year KA crash rate is 2.4%

KA CRASH TRENDS: 2020-2024



Major KA Crash Types:

1. **30.3%** Left Turn/Angle
2. **28.4%** Off-Road/Rollover
3. **15%** Rear-End
4. **11.3%** Pedestrian/Bike



MOST SEVERE CRASH TYPE ANALYSIS



2020-2024

Left-Turn KA Crash Analysis:

- **83.4%** at Intersections vs. Segments
- **40.2%** STOP controlled Intersections
- **54.3%** at 4-Way Intersections
- **53.8%** on 2-lane, 2-way roads
- **57.2%** in urban vs. rural
- **73.6%** during daylight
- **1-6pm** elevated severe crash hours
- **Fridays** saw highest KA crashes
- **December** had highest KA crashes

Rollover/Off-Road KA Crash Analysis:

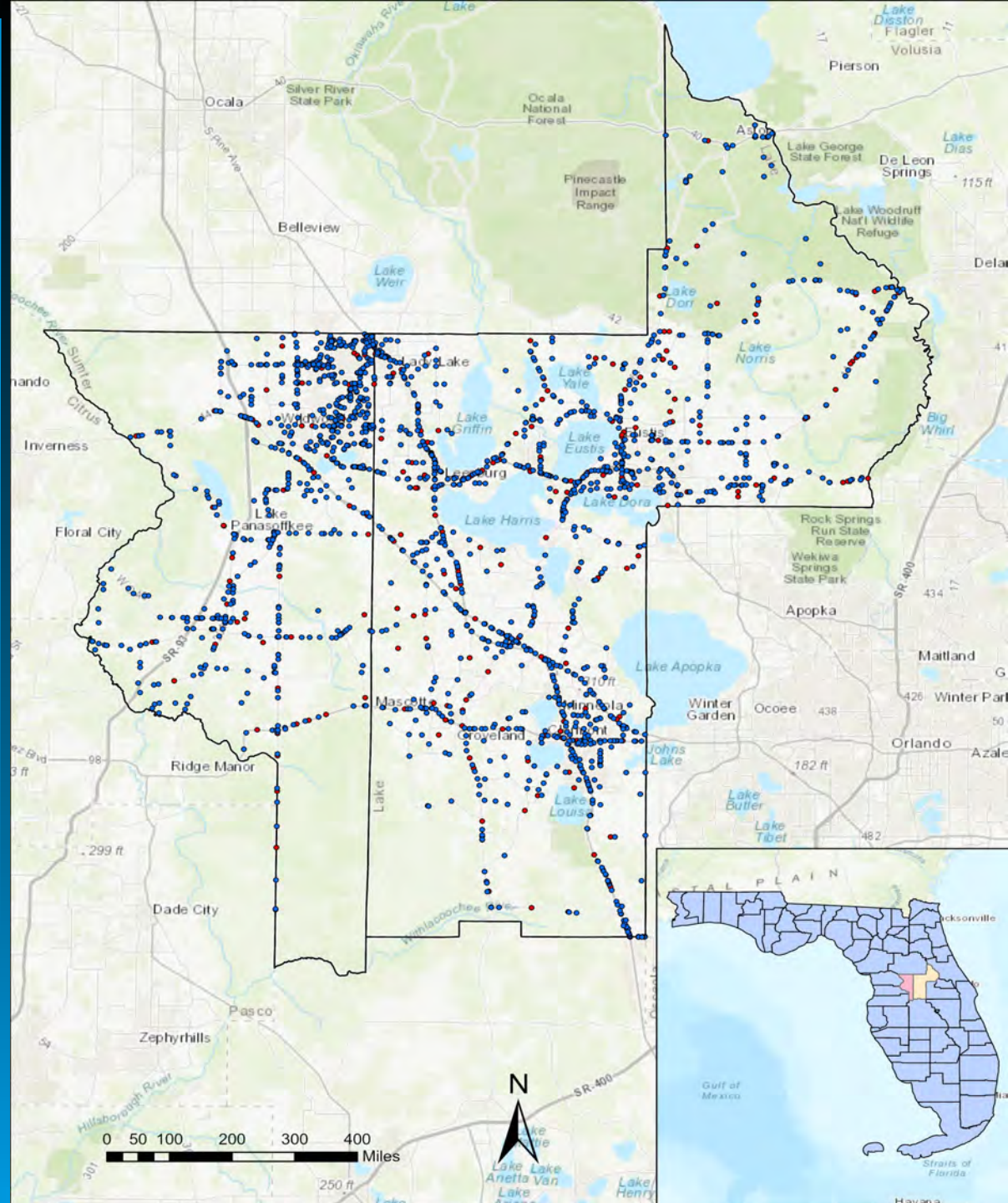
- **84.3%** on Segments vs. Intersections
- **56.2%** at Uncontrolled intersections
- **71.3%** at T-Intersections
- **75.9%** on 2-lane, 2-way roads
- **65.8%** in rural vs. urban
- **54.1%** during daylight
- **2-8pm** elevated severe crash hours
- **Weekends** saw highest KA crashes
- **April** had highest KA crashes

- 2,167 KA crashes (2015-2019) vs. 2,372 KA crashes (2020-2024) yields **9% increase**
- Crash Types: Decrease in **Rear-End** crashes (-7.7%), increase in **Left-Turn/Angle** crashes (+4.7%)
- Lighting Condition: Decrease in “**lighted**” crashes (-12.2%), increases in **daylight and dusk** crashes (+7.1%)
- Intersection Type: Decrease in **signalized** crashes (-6.9%), but increase in **non-signalized** crashes (+7.3%)



IDENTIFYING THE HIGH-INJURY NETWORK

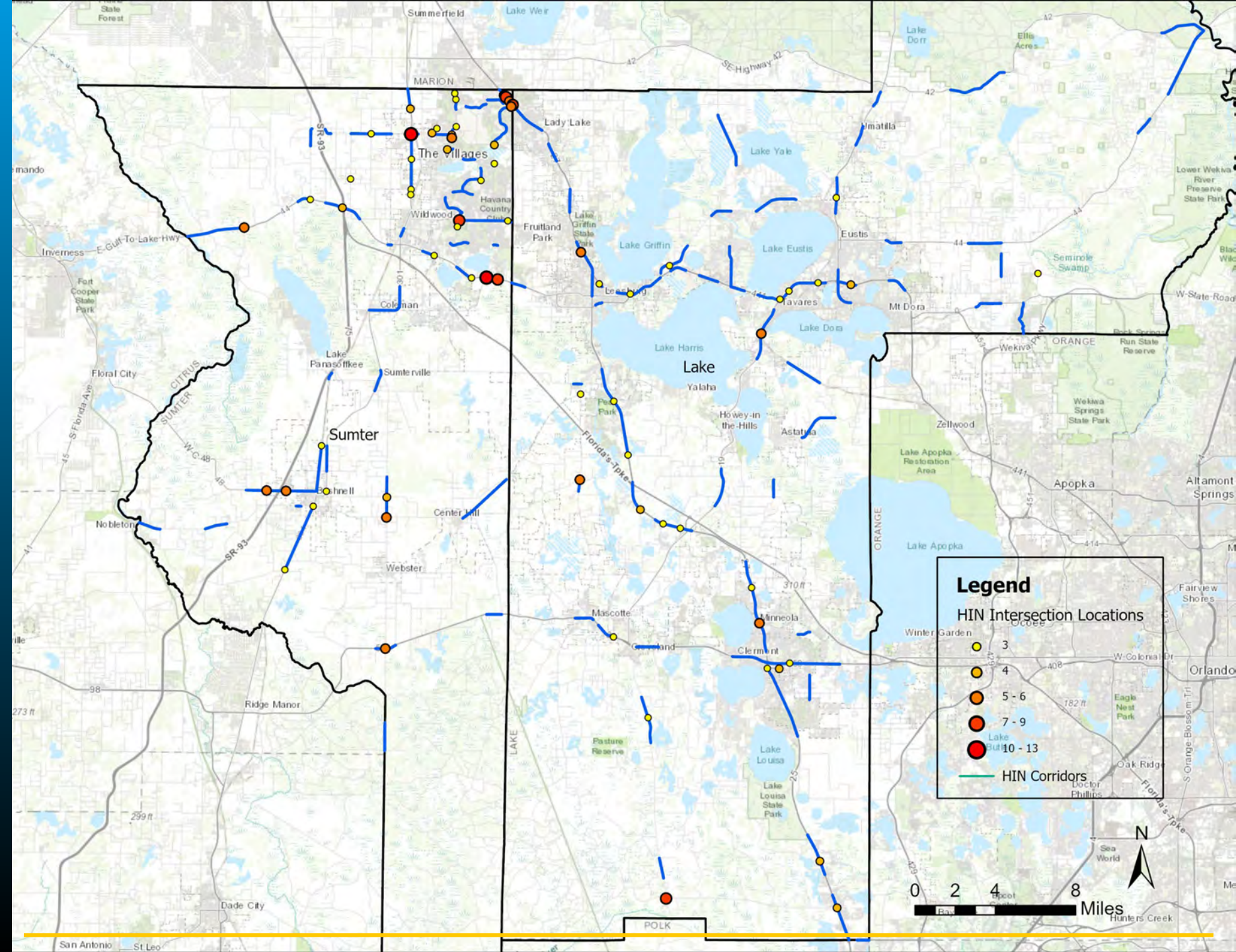
Map-based data-driven network where a disproportionate number of fatal and serious injury crashes occur



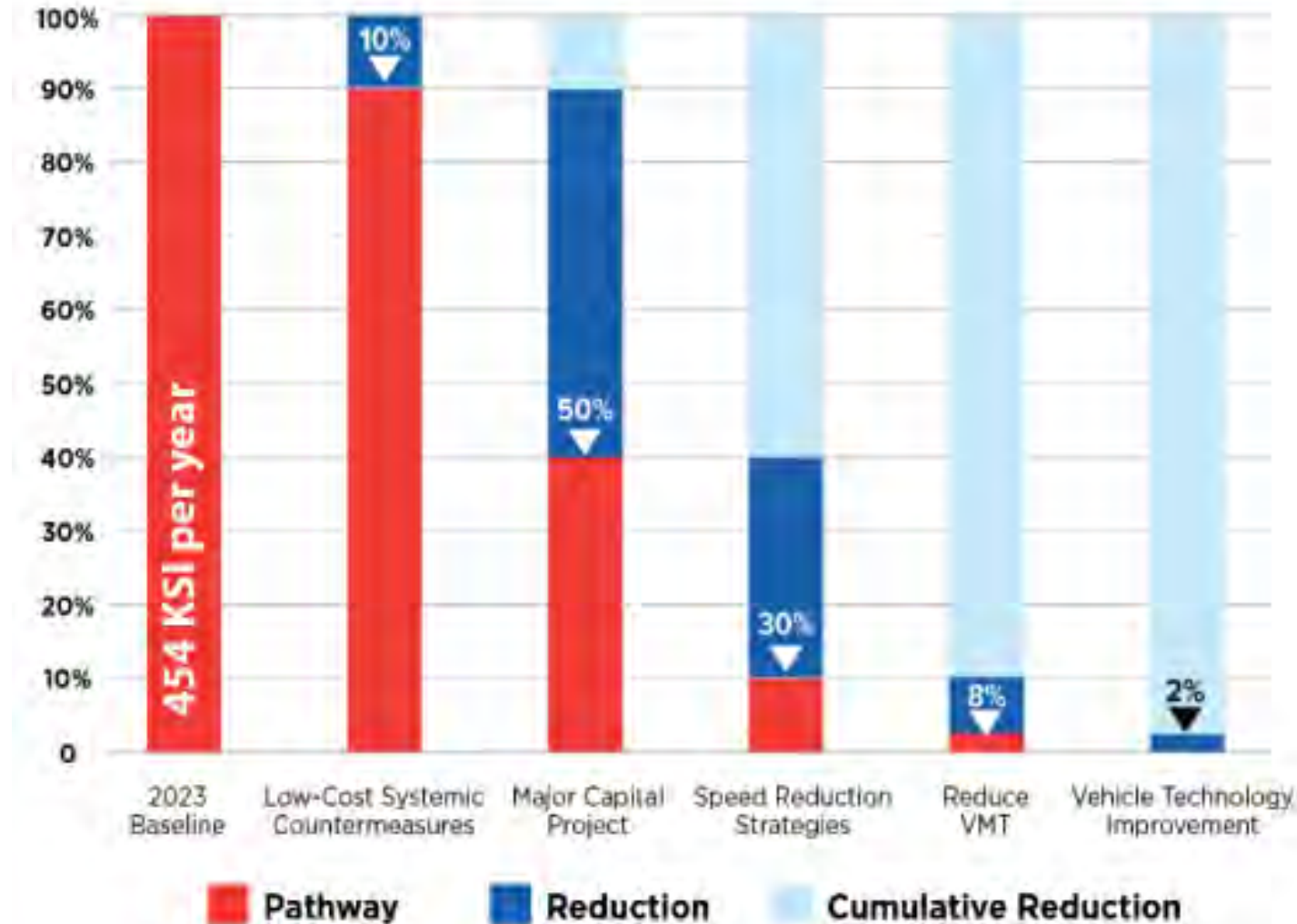
HIGH-INJURY NETWORK

- 106 corridors
- 70 intersections
- 40 segments

50% of KA Crashes occurred on 14% of network



HOW DO WE GET TO ZERO?



Over 10 years, crashes have created **\$14.5 billion** in economic burden with 77% of those costs resulting from 4% of KA crashes (\$11.1B)



SAFETY COUNTER- MEASURES FOR MPO SEVERE CRASH TYPES

1/2

Crash Type	Countermeasures
<p>Left-Turn/Angle-Unsignalized</p> <p>528 KA crashes (30.3%)</p>	<ul style="list-style-type: none"> • Double-Up Oversized Advanced Signage w/ Street Name Plaques and Flashing Beacons • Retroreflective Sheeting on Sign Post • Enhanced Edge Line Pavement Markings • Doubled-up STOP AHEAD & STOP Signs <p>10-27% Reduction</p>
<p>Left-Turn/Angle-Signalized</p> <p>189 KA crashes (26.4%)</p>	<ul style="list-style-type: none"> • Protected Left-Turn Phasing* • Red-Light Cameras • Yellow Change Interval Optimization • Signal Backplates • Roadway Lighting • Upgrade Signing/Marking & Advance Beacons <p>8-77% Reduction</p>
<p>Roadway Departure</p> <p>673 KA Crashes (28.3%)</p>	<ul style="list-style-type: none"> • Edge Line Longitudinal Rumble Strips* • Centerline Longitudinal Rumble Strips • Wide Edge Line Striping • Retroreflective Sign Posts, Enhanced Delineators, Sequential Dynamic Chevron Signs • Guardrail Systems • Safety Edge Treatment • High Friction Surface Treatment • Automated Speed Enforcement Cameras <p>13-64% Reduction</p>



SAFETY COUNTER- MEASURES FOR LSMPO SEVERE CRASH TYPES

2/2

Crash Type	Countermeasures
<p style="text-align: center;">Rear-End</p> <p style="text-align: center;">356 KA Crashes (15.0%)</p>	<ul style="list-style-type: none"> • Speed Limit Evaluation/Reduction • Traffic Calming Treatments • Speed Enforcement Devices • Variable Speed Limits • Dynamic “Queue Ahead” Warning Signs • Lane Width Reductions • High Friction Surface Treatment * • Yellow Change Interval Optimization • Extension of All-Red Clearance • Dynamic Signal Warning Flashers • Traverse Rumble Strips <p style="text-align: right; color: orange; font-weight: bold;">6-67% Reduction</p>
<p style="text-align: center;">Bicycle/Pedestrian</p> <p style="text-align: center;">268 KA Crashes (11.3%)</p>	<ul style="list-style-type: none"> • Pedestrian Hybrid Beacons (PHBs) * • Rectangular Rapid Flashing Beacons (RRFBs) • Midblock Pedestrian Signals • Sidewalks on Both Sides of Roadway • Roadway Lighting • High-Visibility Crosswalk Markings • Leading Pedestrian Interval Signal Timing • Advanced STOP Bars & Signage • Pedestrian Median Refuge Islands • Pedestrian Countdown Signal Heads • Traverse Rumble Strips • Dedicated Bike Facilities (standard, buffered, protected) <p style="text-align: right; color: orange; font-weight: bold;">14-75% Reduction</p>

- 1 Ensure locations with greatest safety need receive highest attention
- 2 Prioritize treatments with demonstrated crash reduction effectiveness
- 3 Consider implementation feasibility and relative cost
- 4 Provide a transparent and replicable scoring methodology



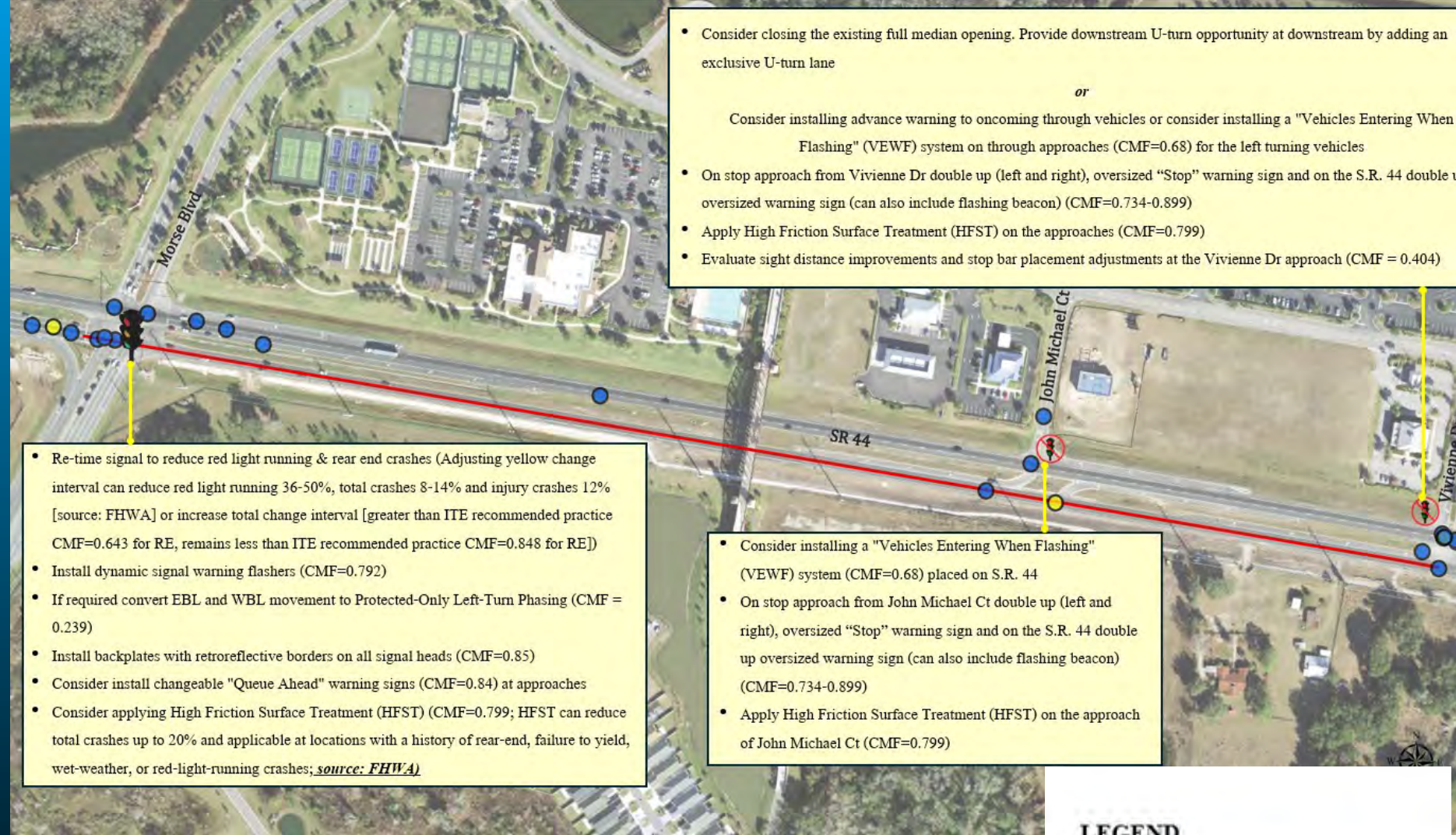
TOP 30 PRIORITY CORRIDORS

- 19 Lake County
- 11 Sumter County

Priority	County	Corridor Name	Begin Limit	End Limit	Fatal (K)	Serious Injury (A)	Major KA Cras
1	Sumter	SR 44	Morse Blvd	Vivienne Dr	3	21	Left-Turn/Angle
2	Lake	US 192	Kersey St	Outdoor RV Resorts	3	11	Rear-End
3	Sumter	US 301	NE 120	CR 466	0	15	Left-Turn/Angle
4	Sumter	CR 475	Ramp 18130016	Ramp 18130020	2	4	Left-Turn/Angle
5	Lake	Dixie Ave	Mckenzie St	S 9th St	2	3	Off-Road/Rollover
6	Sumter	US27/441	Marion Co. Line	Morse Blvd	2	44	Left-Turn/Angle
7	Lake	CR 33	Austin Merritt Rd	Charter Ln	3	4	Left-Turn/Angle
8	Sumter	SR 44	Powell Rd	Buena Vista Blvd	3	3	Rear-End
9	Lake	SR 44	Spruce Dr	Rory Ln	5	2	Left-Turn/Angle
10	Lake	Citrus Blvd	Palm St	Griffin Rd	5	18	Left-Turn/Angle
11	Lake	14th St	W Main St	Griffin Rd	4	6	Left-Turn/Angle
12	Sumter	Buena Vista Blvd	St Charles Pl	Pinellas Pl	2	15	Left-Turn/Angle
13	Lake	CR 19A	W Charlotte Ave	Old US 441	6	12	Left-Turn/Angle
14	Lake	US 441	Off Ramp 11010005 WB	Spring Harbor Blvd	2	6	Left-Turn/Angle
15	Sumter	Buena Vista Blvd	Southern Trace	Parr Dr	1	15	Left-Turn/Angle
16	Lake	North Blvd	N Lake St	CR 44	5	17	Left-Turn/Angle
17	Sumter	SR 44	CR 231	CR 44A	5	18	Left-Turn/Angle
18	Lake	SR 50	Pearl St	Villa City Rd	3	3	Left-Turn/Angle
19	Lake	US 441	Perkins St	Lee St	0	4	Left-Turn/Angle
20	Lake	CR 470	Palmetto Ave	CR 33	1	4	Left-Turn/Angle
21	Lake	US 441	Professional Dr	Tavares Ave	2	3	Left-Turn/Angle, Off-Road/Ro
22	Lake	SR 19	CR 561	Progressive Aerodyne	3	9	Left-Turn/Angle
23	Lake	SR 50	West Ave	CR 455	8	23	Left-Turn/Angle
24	Lake	US 441	Hilltop Rd	Dillard Rd	7	23	Left-Turn/Angle
25	Sumter	CR 466	CR 201	CR 106	0	8	Left-Turn/Angle
26	Lake	US 27/441	Golden Eagle Blvd	US Hwy 192	3	18	Left-Turn/Angle
27	Lake	US 27	Hawthorne Rd	Dewey Robbins Rd	10	16	Left-Turn/Angle
28	Sumter	Morse Blvd	El Camino Rd	CR 466	5	20	Left-Turn/Angle
29	Lake	US27/441	Frank Jarrell Rd	Holly Gove Blvd	4	15	Left-Turn/Angle
30	Sumter	Hillsborough Trl	Enterprise Dr	Morse Blvd	0	6	Off-Road/Rollover

LOCATION SPECIFIC COUNTER-MEASURES MAP

- Corridor Overview
- Roadway Characteristics
- Crash Statistics
- Crash Conditions
- Summary of KA Crash Reports
- Proposed Countermeasures



- Re-time signal to reduce red light running & rear end crashes (Adjusting yellow change interval can reduce red light running 36-50%, total crashes 8-14% and injury crashes 12% [source: FHWA] or increase total change interval [greater than ITE recommended practice CMF=0.643 for RE, remains less than ITE recommended practice CMF=0.848 for RE])
- Install dynamic signal warning flashers (CMF=0.792)
- If required convert EBL and WBL movement to Protected-Only Left-Turn Phasing (CMF = 0.239)
- Install backplates with retroreflective borders on all signal heads (CMF=0.85)
- Consider install changeable "Queue Ahead" warning signs (CMF=0.84) at approaches
- Consider applying High Friction Surface Treatment (HFST) (CMF=0.799; HFST can reduce total crashes up to 20% and applicable at locations with a history of rear-end, failure to yield, wet-weather, or red-light-running crashes; *source: FHWA*)

- Consider closing the existing full median opening. Provide downstream U-turn opportunity at downstream by adding an exclusive U-turn lane

or






Consider installing advance warning to oncoming through vehicles or consider installing a "Vehicles Entering When Flashing" (VEWF) system on through approaches (CMF=0.68) for the left turning vehicles

- On stop approach from Vivienne Dr double up (left and right), oversized "Stop" warning sign and on the S.R. 44 double up oversized warning sign (can also include flashing beacon) (CMF=0.734-0.899)
- Apply High Friction Surface Treatment (HFST) on the approaches (CMF=0.799)
- Evaluate sight distance improvements and stop bar placement adjustments at the Vivienne Dr approach (CMF = 0.404)

- Consider installing a "Vehicles Entering When Flashing" (VEWF) system (CMF=0.68) placed on S.R. 44
- On stop approach from John Michael Ct double up (left and right), oversized "Stop" warning sign and on the S.R. 44 double up oversized warning sign (can also include flashing beacon) (CMF=0.734-0.899)
- Apply High Friction Surface Treatment (HFST) on the approach of John Michael Ct (CMF=0.799)

#1: S.R. 44, Morse Blvd to Vivienne Dr

LEGEND

-  Signalized Intersection
-  Unsignalized Intersection
-  Motor Veh Crash locations
-  Motorcycle Crash locations
-  HIN Corridor



SAFETY POLICIES

- **10 proposed policies to include:**
 - **Annual evaluation**
 - **Studies to prioritize KA crashes**
 - **Lighting Standards**
 - **Use of target speeds**

Policy Action	Term	Agency Lead	Partner Agency
Prepare annual report to track progress	Annual	LSMPO	-
Meet annually with LSMPO Board to review progress and performance towards goal of meeting zero by 2050.	Annual	LSMPO	-
Meet with Lake and Sumter County to discuss safety projects and enforcement opportunities	Annual	LSMPO	Lake County/ Sumter County
Prioritize fatal and serious injury crashes in all traffic studies, planning documents, and safety assessments prepared for LSMPO	Short-Term	LSMPO	-
Integrate High-Injury Network assessment into the next LRTP development and update the list of highest priority corridors.	Mid-Term	LSMPO	-
Integrate lighting upgrades to meet latest FDOT criteria on all projects.	Short-Term	LSMPO	FDOT/Counties/ Municipalities
Develop a policy to promote and encourage lighting improvements for pedestrians to create safe nighttime connectivity between crosswalks and transit stops.	Mid-Term	LSMPO	Counties/ Municipalities
Support local municipalities to explore the feasibility of 20 mph speed limits for residential districts to align with Florida Statutes.	Mid-Term	LSMPO	Municipalities
Utilize FDOT context classification and speed management practices within the Florida Design Manual to support target speeds within project planning and design phase to integrate target speeds into design phase.	Short-Term	LSMPO	Counties/ Municipalities
Explore opportunities to collaborate on emerging technologies with public and private partners.	Mid-Term	LSMPO	FDOT/Counties/ Municipalities

PUBLIC OUTREACH



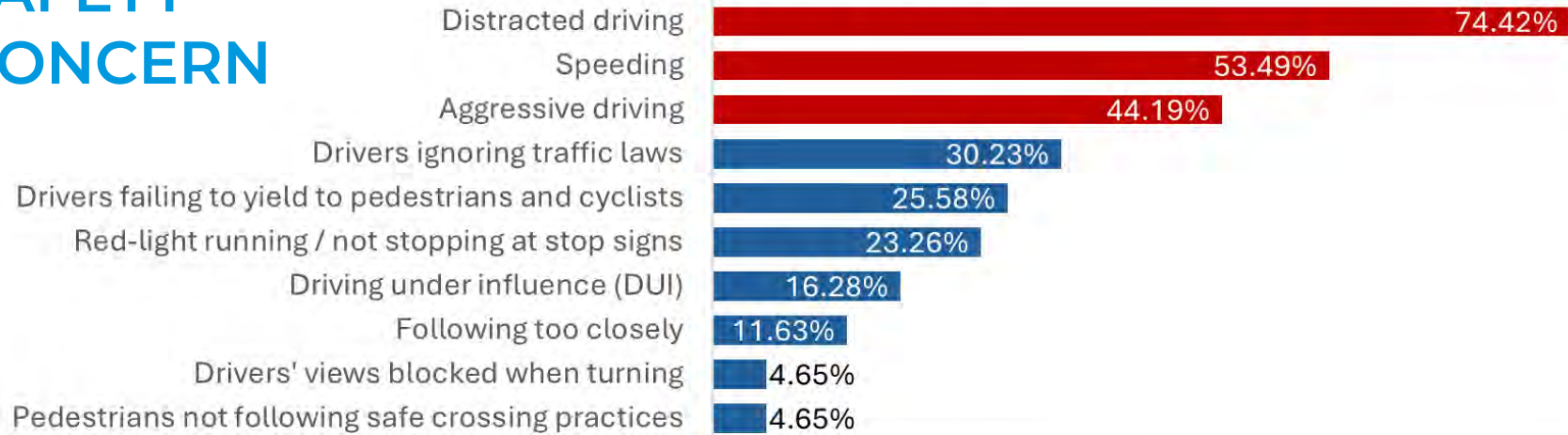
- 1** Public Safety Survey
 - October 2, 2025 to December 10, 2025
 - 43 respondents & 183 comments
 - [Survey – UCF Smart & Safe Transportation Lab](#)
- 2** LSMPO VZ Safety Action Plan Presentation–
Nov. 21, 2025
- 3** LSMPO TAC/CAC Presentation – **Feb. 11, 2026**
- 4** LSMPO Board Presentation- **April 8, 2026**

WHAT DID WE HEAR?

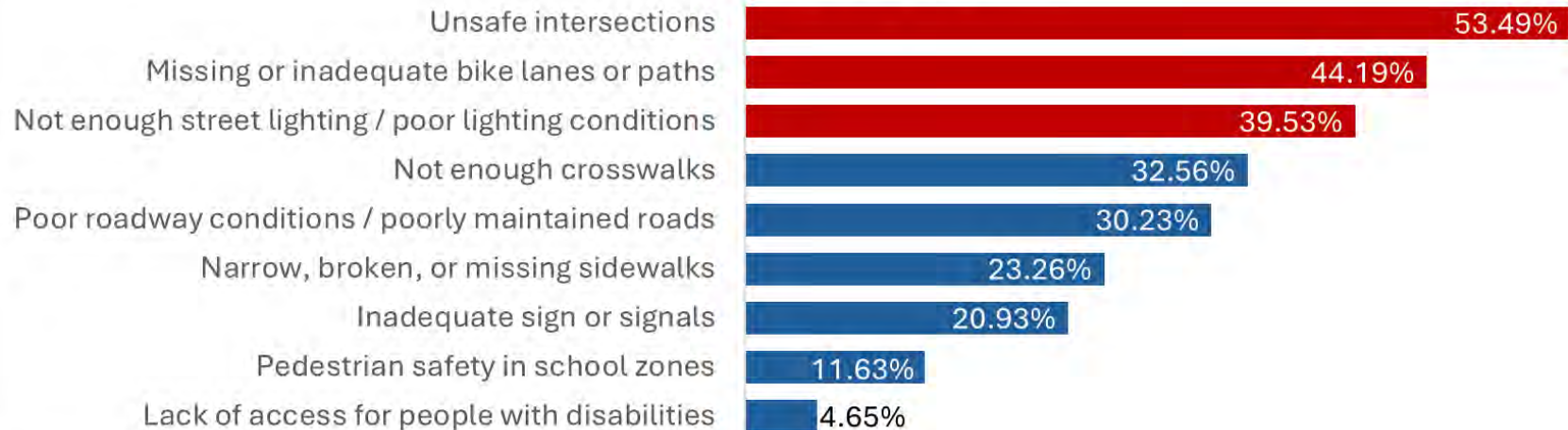


SAFETY CONCERNS

Unsafe Road User Behaviors



Infrastructure Safety Concerns



SAFETY STRATEGIES

- Expanded Sidewalks
- Roadway Design Enhancements
- Pedestrian Crossing Enhancements
- Protected Bike Facilities
- Safety Education
- Enforcement Initiatives

REPORTING PROGRESS

1

LSMPO Safety Action Plan Annual Report

- Tracks crash trends over time

2

LSMPO Vision Zero Dashboard

- Interactive crash analysis dashboard
- HIN countermeasure summaries for Top 30 corridors



NEXT STEPS

- 1 Review document/provide any comments or feedback
- 2 Resolution to adopt Final Plan- June 2026
- 3 UCF/LSMPO Grant close-out documents
- 4 First annual report to FHWA- Summer 2027



Christine W. Fanchi, PE, PTP, RSP1
Safety Technical Director
WSP

**THANK
YOU**

DISCUSSION ITEM B:

**Lake~Sumter MPO DRAFT 2026 List of
Priority Projects (LOPP)
Closing the Call for Projects for 2026**

2026 List of Priority Projects (LOPP)

LSMPO Governing BOARD

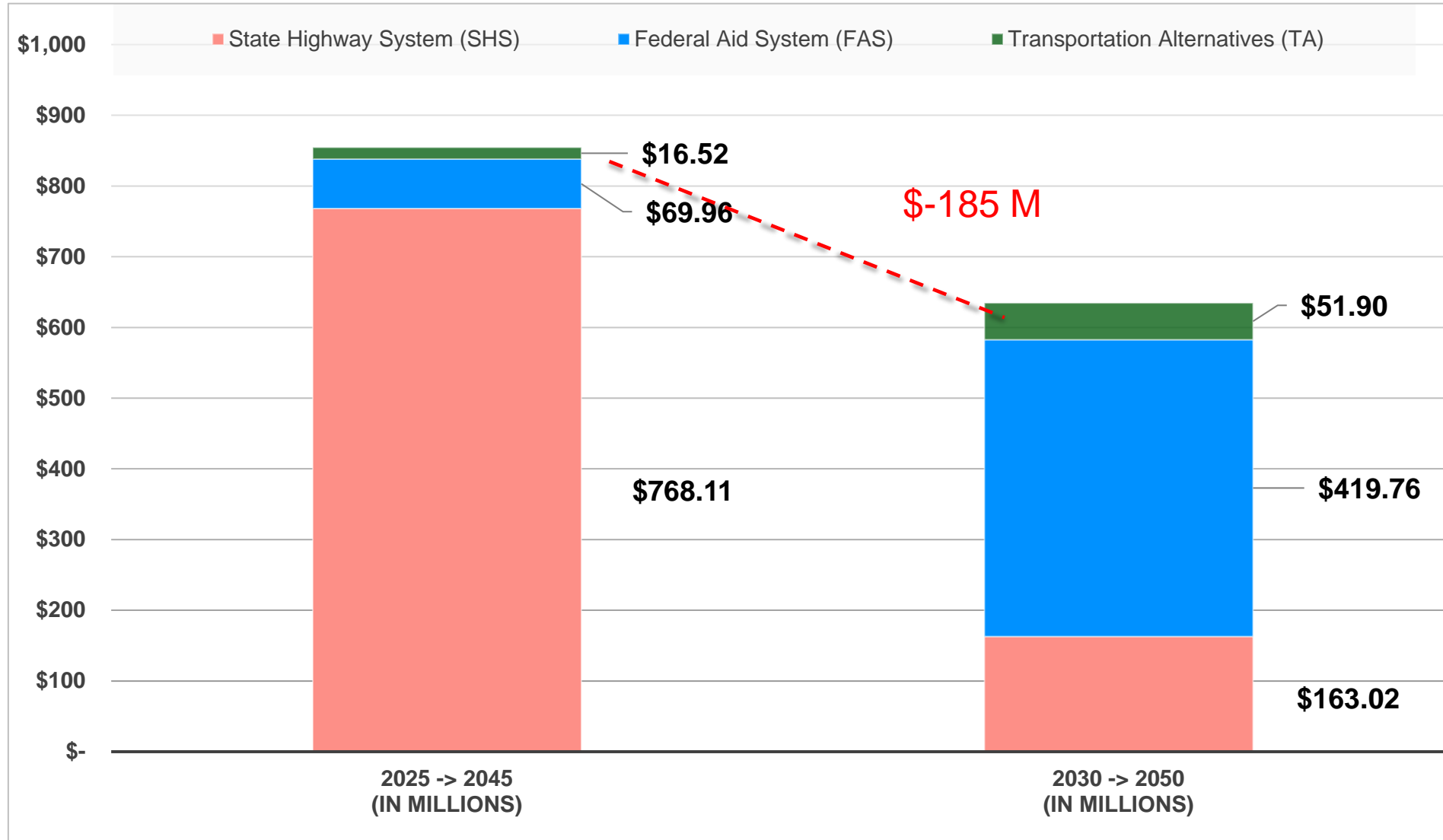
April 22, 2026

What is the List of Priority Projects?

- The List of Project Priorities (LOPP) is updated annually to identify LSMPO's **Unfunded Top Priority Projects** for inclusion in the TIP and FDOT Five-Year Work Program
- The 2026 LOPP is more streamlined with the 2050 LRTP – Cost Feasible Plan and other LSMPO documents

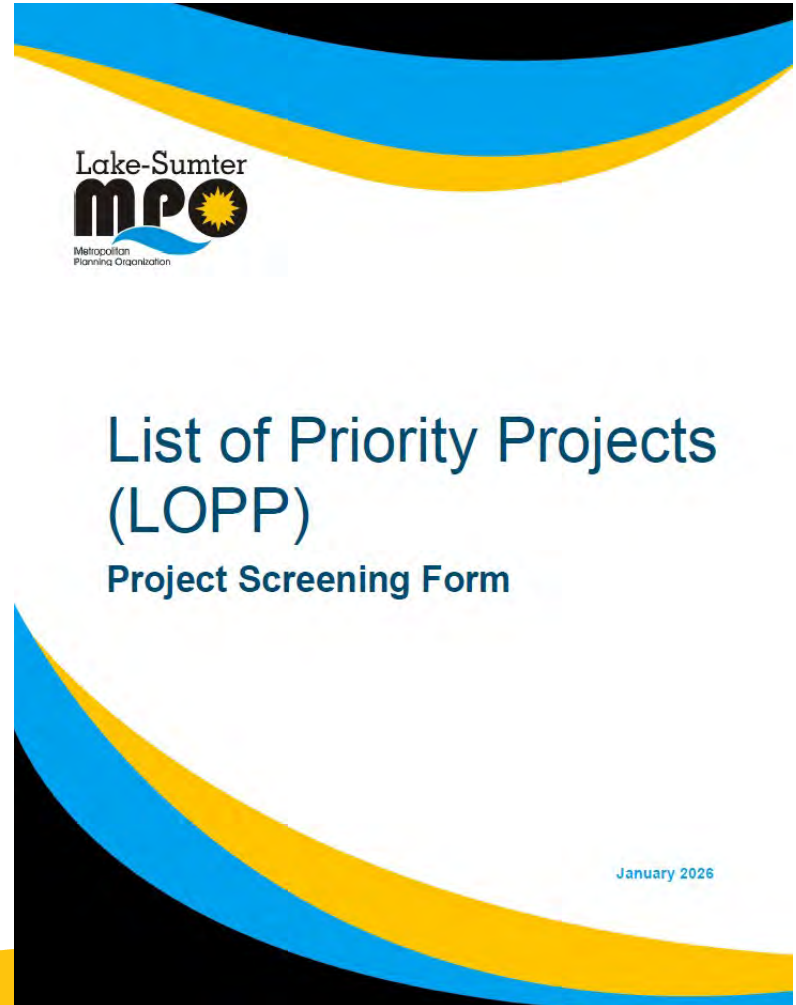


2050 Financial Forecast – Less Revenue



2026 LOPP: Call for TA Projects

- ✓ The 2026 Call for Projects ended on Wednesday, March 25, 2026
- ✓ 3 projects received and reviewed
- ✓ 1 project was judged eligible to move forward



Transportation Alternative (TA) Initial Screening

- ✓ **Bevilles Corner Intersection Improvements & Trail** - should move forward
- **CR 476 Resurfacing** is a resurfacing project – highway maintenance doesn't meet TA criteria
- **City of Center Hill CR 48** – lacks maintaining agency support and sponsorship

LAP & TA Project Applications

- LSMPO needs to upload all Local Agency Projects (LAP) & TA projects PIAs into GAP system prior to **June 5, 2026**
- TA project sponsors will need to **complete/upload** a current **TA project application** into **GAP system** during submission cycle (**July 31st**)

Projects for Updated PIA

Sumter County

- CR 747
- CR 476
- CR 470 Ext.
- Bevilles Corner Intersection Improvement (TA)

Lake County

- Wellness Way Widening

LOPP Dashboard

TIP & LOPP Dashboard Lake-Sumter MPO

Select by Type: All Types | Select by County: All Counties | Select by Responsible Agency: All Agencies | Select by SIS: All Projects | Select for Federal Funding: All Funding | Toggle between: **Adopted** | Draft

LOPP Project List

Search...

- #1 - SR 44 (CR 44B)
Road Widening
Roadway Capacity Projects (Non-SIS)
- #2 - SR 500 (US 441)
Road Widening
Roadway Capacity Projects (Non-SIS)
- #3 - SR 19 Planning Study/ PD&E (Freight Project)
Corridor Study / PD&E
Planning Studies
- #4 - US 301 Wildwood Corridor Improvement Project
Safety
Complete Streets
- #5 - CR 747
Safety Project
Safety/Operations/TSMO Projects
- #6 - Central Parkway
Road Widening
Roadway Capacity Projects (Non-SIS)

TIP | **LOPP**

Number of LOPP Projects

10

TIP | **LOPP**

Adopted TIP: 2382757

FM NUMBER	2382757
PROJECT NAME	SR 429/46 (Wekiva Pkw)
PROJECT SEGMENT	From W Of Old McDonald Rd To E Of Wekiva River Rd
FROM	W Of Old McDonald Rd
TO	E Of Wekiva River Rd
BEGIN MILEPOST	
END MILEPOST	
COUNTY	Lake County
DESCRIPTION	SR 429/46 (Wekiva Pkw) From W Of

TIP | **LOPP**

Adopted Cost Records

Selection required on one or more elements

Adopted | Draft

Legend

TIP

Adopted (FY 2026 -

- Aviation
- Bike/Ped an Projects
- Bridge Proje
- Planning St.
- Roadway Ce (Non-SIS)
- Safety/Oper Projects
- Strategic Int System Proj
- Trail Projects
- Transit and T Disadvanta
- Other

Sum Total Cost

\$3,701,389,214

Total | 5-Year

Number of LOPP Projects by Type

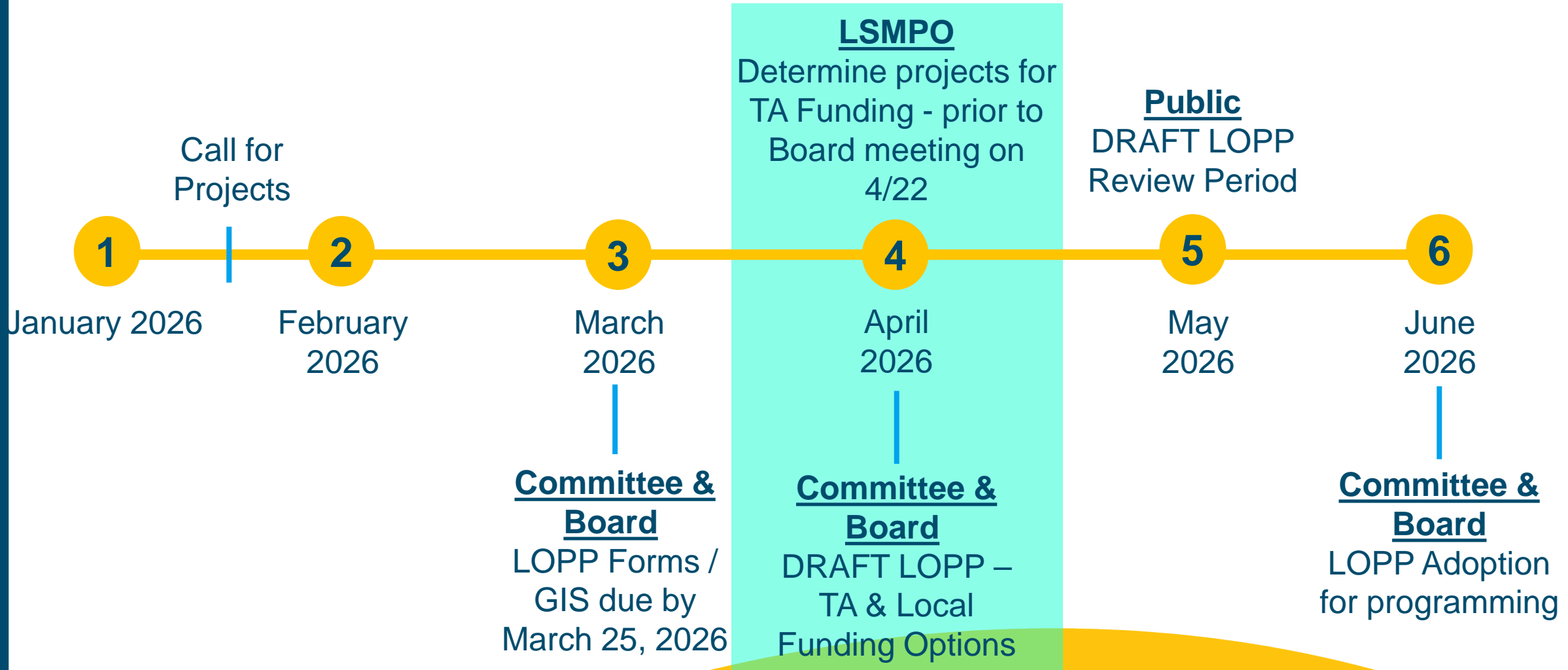
Type	Count
Aviation	8

By Type












The LOPP Dashboard will be updated throughout the 2026 LOPP process.

The TIP & LOPP Dashboard can be viewed at: [Lake-Sumter MPO - TIP Dashboard](#)

List of Priority Projects (LOPP) Implementation Schedule



Schedule

	January 2026	February 2026	March 2026	April 2026	May 2026	June 2026
TAC/CAC & Board Meetings		 TAC/CAC – Feb 11 Board – Feb 25		 TAC/CAC – Apr 8 Board – Apr 22		 TAC/CAC – Jun 10 Board – Jun 17
Congestion Management Process (CMP) Update & Dashboard		CMP - Kickoff			 DRAFT - CMP	 CMP Final Adoption
2027-2032 Transportation Improvement Program (TIP) & Dashboard					 DRAFT FY27-32 TIP	 FY27-32 TIP Adoption
2026 LOPP & Dashboard Development		 LOPP Call for Projects		 LOPP Project Prioritization	 DRAFT 2026 LOPP	 2026 LOPP Adoption

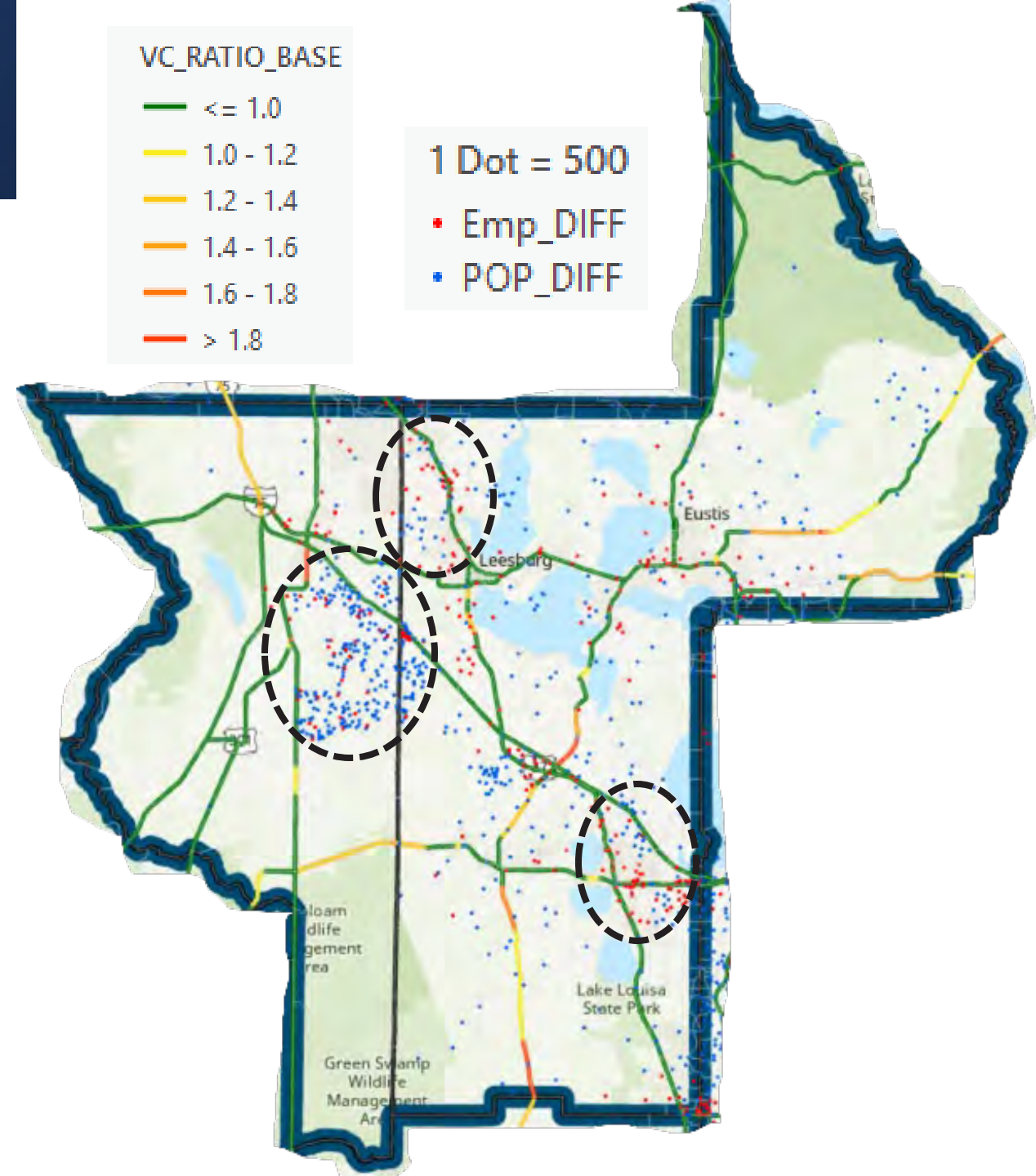
Demographic Data

Impact of growth on the Transportation System.

Areas of Note:

- East South Lake & Minneola
- SW Villages
- North of Leesburg

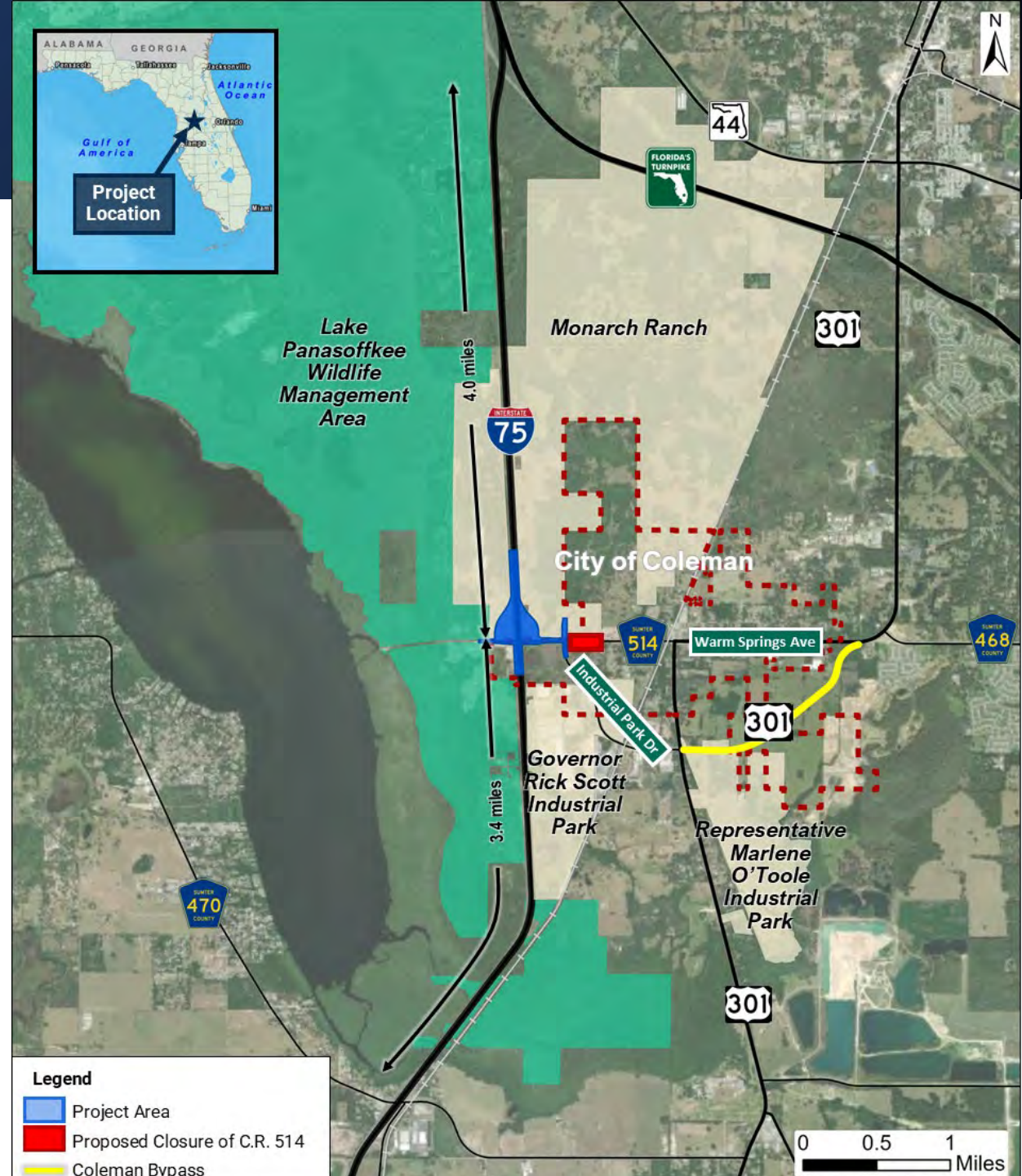
<https://www.cflroads.com/project/435859-4>



- Given the large number of needs & funding limitations, FDOT D5 is looking for improvements that bring immediate congestion relief.
- This includes:
 - Interim improvements
 - Intersection Improvements
 - Technology Improvements
- The “ultimate” solution is still possible but is likely many years out.
- Prioritize projects of various amounts to help us in this effort.

I-75 & CR 514 Interchange

- Purpose & Need
 - Provide system linkage to I-75 to accommodate and support the increase in transportation demand along Industrial Park Drive
 - System Linkage and Transportation Demand
- Schedule
 - Public Hearings: 12/15 & 12/17/25
 - Targeting Location and Design Concept Approval in Feb 2026
 - Anticipate Design immediately following approval



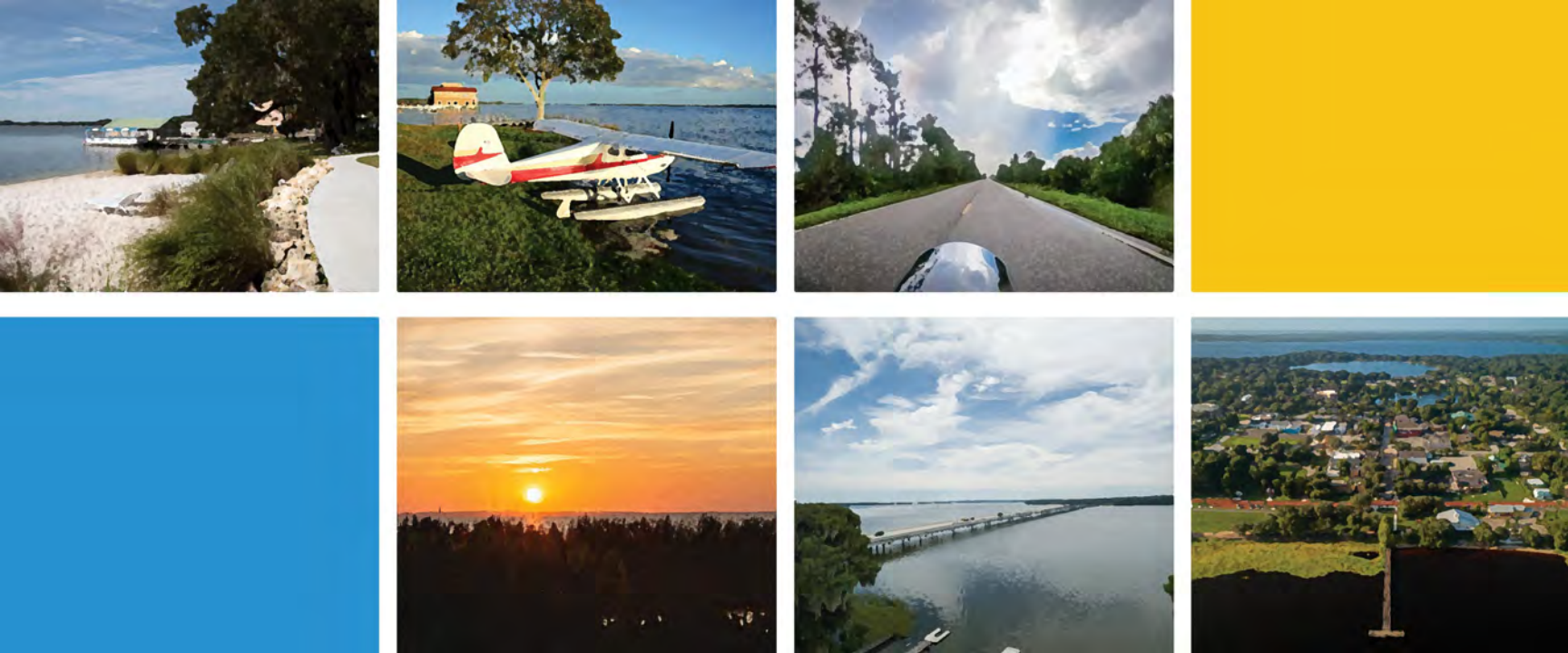
I-75 Future Capacity Project



- I-75 Master Plan recommended Interim Improvements and an “ultimate” configuration.
- Aux Lanes included in current Moving Florida Forward Design Build Project
- D5 is evaluating alternatives for future special use lanes in the median of I-75.



Questions?



FY 2027 – 2031 Transportation Improvement Program (TIP)

New TIP Snapshot



DISCUSSION ITEM C:



04/22/2026

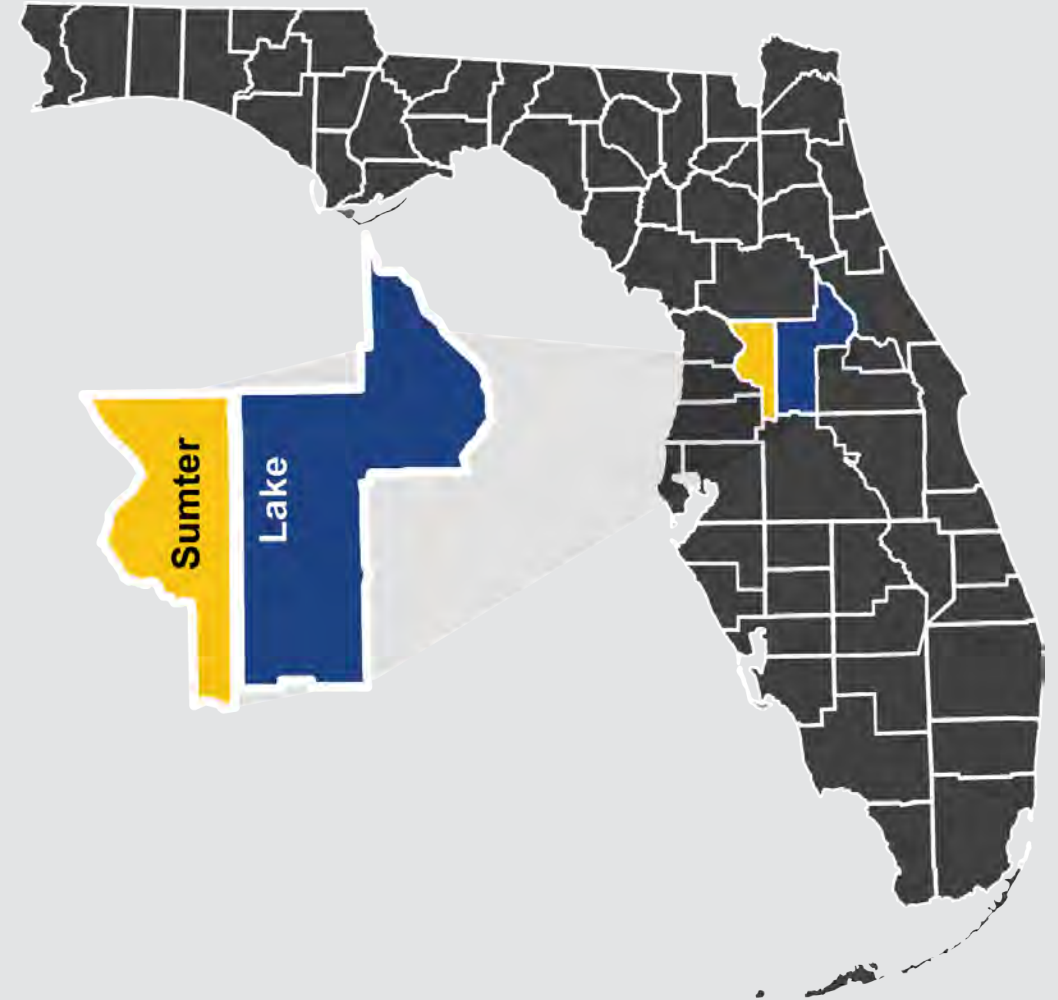
TIP Overview - Five Year Funded Work Program

Purpose: Provides a comprehensive, fully funded five-year program of transportation improvement projects.

Identifies priority investments across all transportation modes

Consistency with Other Plans:

- 2050 Long Range Transportation Plan (LRTP)
- FDOT's Five-Year Adopted Work Program
- Lake County's Transit Development Plan (TDP)



CURRENT FY 2026 – 2030 TIP

- No Amendments for March/April

DRAFT FY 2027 – 2031 TIP

- FDOT Snapshot received Friday, April 3rd
- FY 2027-FY 2031 TIP Report in progress
- Public review period opens the end of May 2026, closes June 18,2026



TIP Dashboard Review

TIP & LOPP Dashboard
Lake-Sumter MPO

Select by Type: All Types | Select by County: All Counties | Select by Responsible Agency: All Agencies | Select by SIS: All Projects | Select for Federal Funding: All Funding | Toggle between: Adopted | Draft

TIP Project List

Search...

- 2382757 - SR 429/46 (Wekiva Pkw)**
Adopted - Lake County
Strategic Intermodal System Projects (SIS)
- 4061103 - Thermoplastic For I-75/Turnpike Interchange Modify**
Adopted - Sumter County
Safety/Operations/TSMO Projects
- 4130193 - Lake Traffic Engineering Contracts**
Adopted - Lake County
Safety/Operations/TSMO Projects
- 4130198 - Sumter Traffic Engineering Contracts**
Adopted - Sumter County
Safety/Operations/TSMO Projects
- 4136151 - Lighting Agreements**
Adopted - Lake County
Safety/Operations/TSMO Projects
- 4136152 - Lighting Agreements**
Adopted - Sumter County
Safety/Operations/TSMO Projects

TIP | LOPP

Number of TIP Projects

143

TIP | LOPP

Adopted TIP: 2382757

1 of 143

FM NUMBER	2382757
PROJECT NAME	SR 429/46 (Wekiva Pkw)
PROJECT SEGMENT	From W Of Old McDonald Rd To E Of Wekiva River Rd
FROM	W Of Old McDonald Rd
TO	E Of Wekiva River Rd
BEGIN MILEPOST	
END MILEPOST	
COUNTY	Lake County
DESCRIPTION	SR 429/46 (Wekiva Pkw) From W Of

TIP | LOPP

Adopted Cost Records

Selection required on one or more elements

Category	Total	5-Year
Aviation	8	

Map

Map showing project locations in Lake County, Florida. Legend includes: Aviation (purple), Bike/Ped an Projects (orange), Bridge Project (dark blue), Planning St (yellow), Roadway Cc (Non-SIS) (light blue), Safety/Oper Projects (red), Strategic Int System Proje (green), Trail Projects (light green), Transit and 1 Disadvantaç (dark blue), Other (black).

Sum Total Cost: **\$3,701,389,214**

Total | 5-Year

FDEP | Esri | TomTom | Garmin | SafeGraph | CGIAR | USGS | FAO | METI/NASA | EPA... Powered by Esri

The TIP Dashboard supports the adopted TIP Report and corresponding amendments.

The TIP Dashboard can be viewed at: [Lake-Sumter MPO - TIP Dashboard](#)

TIP Dashboard Video



Transportation Improvement Program (TIP) Dashboard



The TIP Dashboard supports the adopted TIP Report and corresponding amendments.

The TIP Dashboard video can be viewed at: [LSMPO - TIP Dashboard Video | Videos & Movies on Vimeo](#)

REPORTS

1. FDOT Report – Chuck Koppennolle.
2. Florida Turnpike Enterprise Report (FTE) -Loren Hughes
4. Lake County Transit Report – info only
5. Sumter County Transportation Disadvantaged Report - info only
6. SR 50 Multimodal Operations Improvements Study – info only
7. MPOAC Institute – Save the Date – May 1, 2026.



Lake Sumter MPO

FDOT Report

April 2026

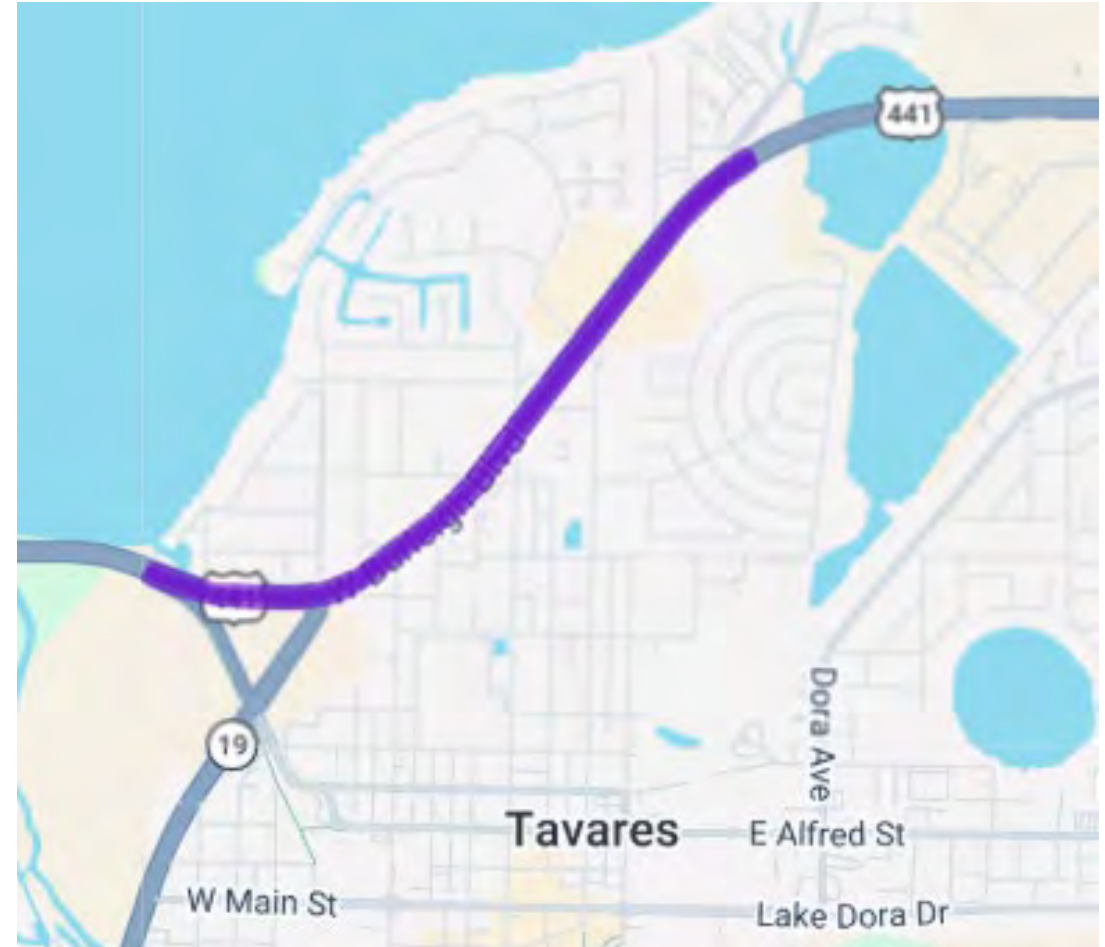
New: 450581-1: US 441 from Lakeshore Blvd to Lake Eustis Dr

◆ **Project Description:**

- Resurface of US 441
- Pedestrian curb ramps will be rebuilt to meet ADA standards.
- City of Tavares

◆ **Began:** March 29, 2026

◆ **Estimated Completion:** Summer 2026

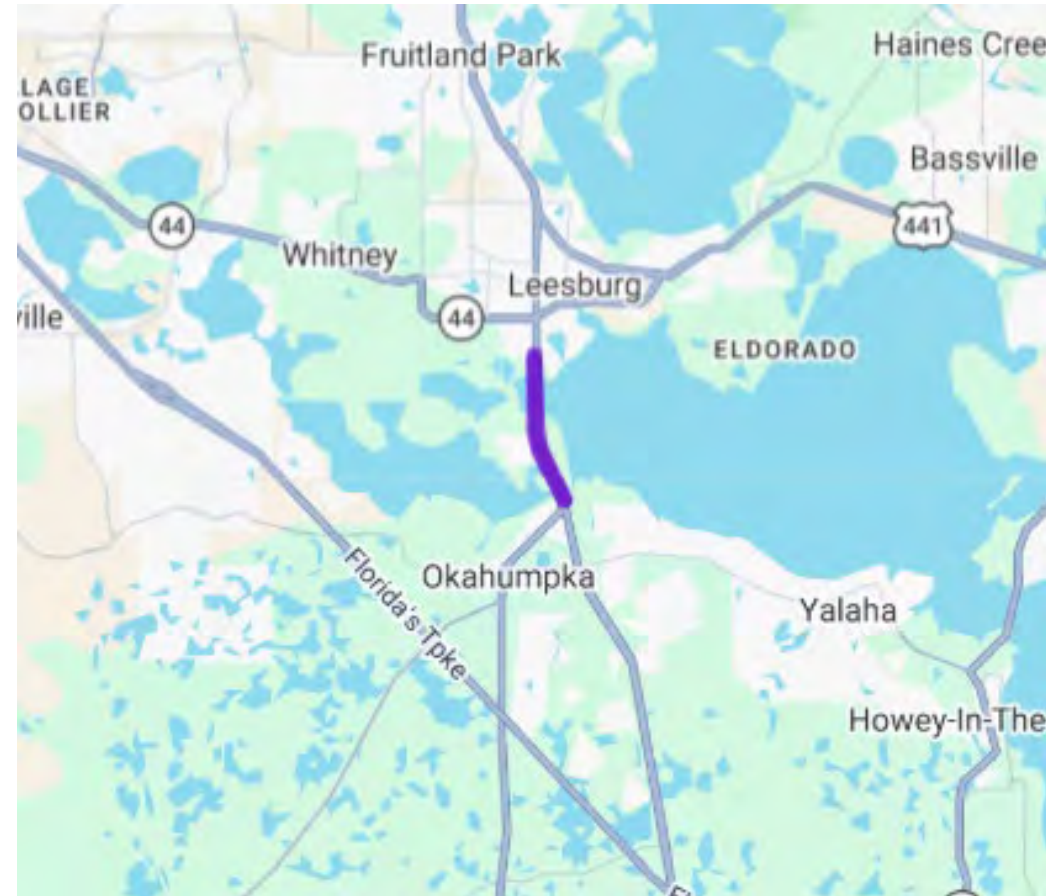


Approaching Completion: 448769-1 US 27 Resurfacing

◆ **Project Description:**

- Resurfacing of US 27 from CR 33 to Middlesex Rd, through Eustis, Leesburg, and Tavares
- Work on the road has been complete
- Finishing new drainage at two locations

◆ **Estimated Completion:** Early June



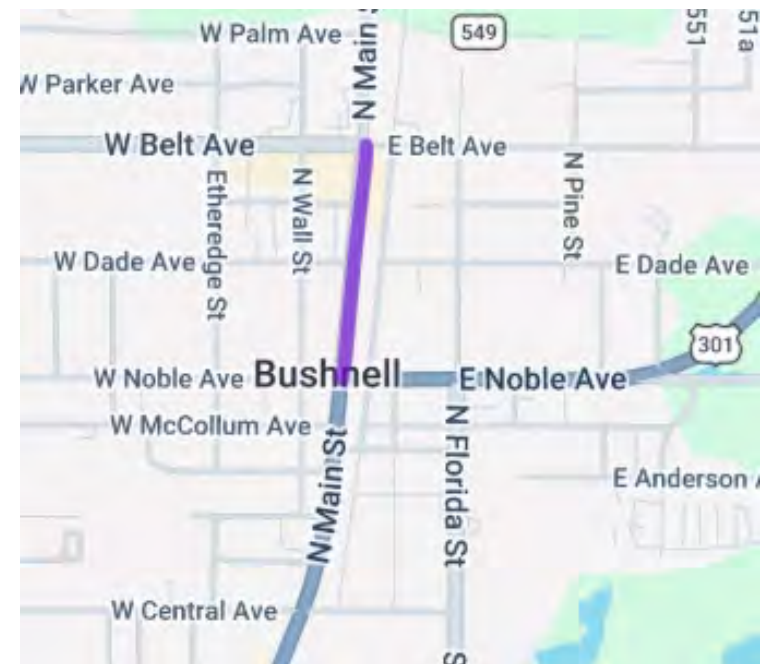
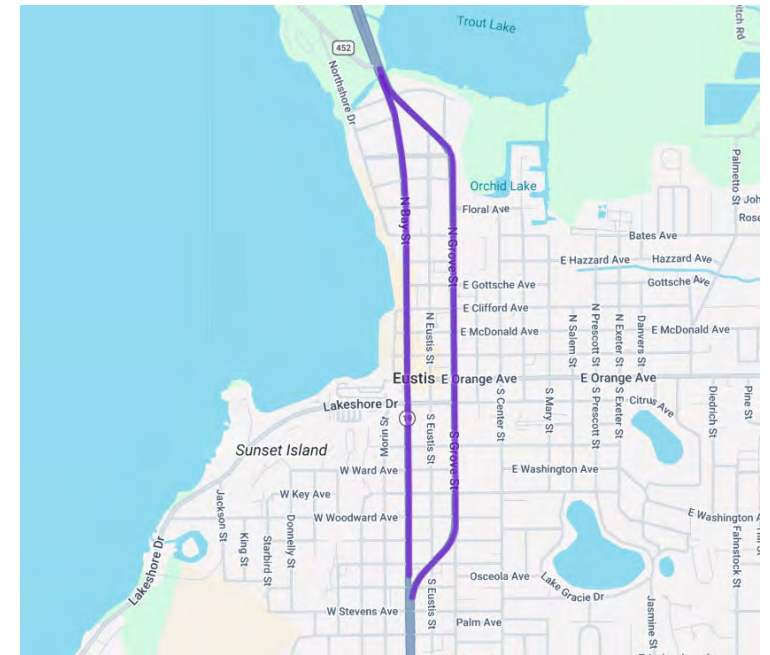
Completed Projects:

◆ SR 19 Resurfacing in the City of Eustis

➤ Final acceptance: Jan 31st

◆ SR 48/SR 475 in the City of Bushnell

➤ Final acceptance: April 2, 2026



April is Distracted Driver Awareness Month

◆ Categories:

- Visual: Eyes off the road
- Manual: Hands off the wheel
- Cognitive: Mind somewhere else

◆ Stats

- On average: 9 fatalities a day
- 2023: 3,275 Fatalities
- 2022: 3,315 Fatalities
 - 1% Decrease

➤ Source: National Safety Council (NSC) analysis of NHTSA Fatality Analysis Reporting System (FARS) data.



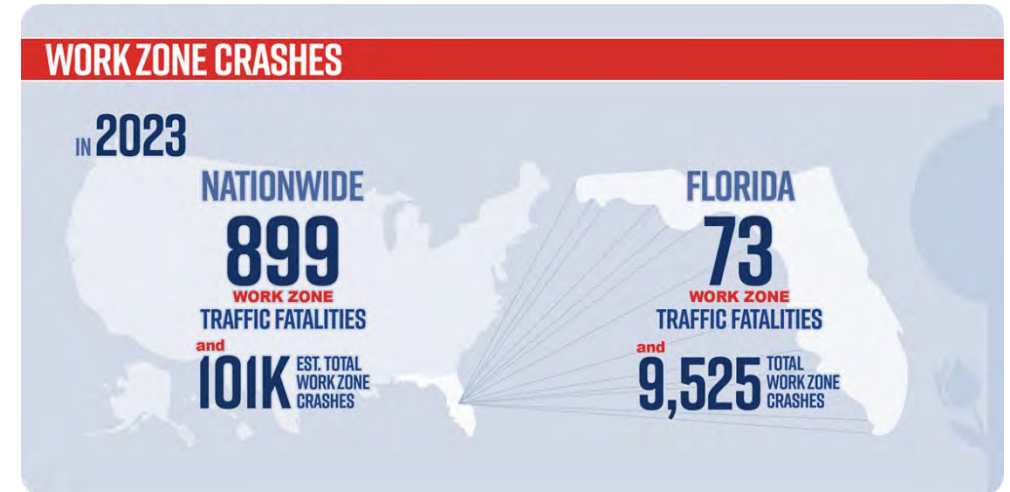
Work Zone Awareness Week – April 20-24, 2026

◆ Why it matters:

- Changing road patterns
- Narrowed lanes
- Reduced Speeds
- Crew work a few feet away

◆ Be Aware and Be Slow:

- Brief moment of distraction
- Excessive Speed



Source: WorkZoneSafety.org/work-zone-data

Source: signal4analytics.com

FROM WORK ZONES TO EVERYDAY ROADS, APRIL HIGHLIGHTS THE IMPORTANCE OF STAYING FOCUSED BEHIND THE WHEEL.

With Distracted Driving Awareness Month, National Walking Day, and NHTSA's Drug-Impaired Driving Campaign, here are a few tips to keep everyone safe.



Use caution around work zones.



Slow down or move over for stopped vehicles.



Limit distractions.



Watch for people walking and biking.



Obey traffic signs and signals.



Approach intersections with caution.



Show compassion to yourself and others.



Don't let love ones drive impaired.

3rd Annual Central Florida Safety Summit

- ◆ Friday May 8, 2026
 - ✓ **Lavender on the Lake**
2596 Clay Whaley Rd.
St Cloud, FL 34772
- ◆ Time: 10:00am – 2:00pm
- ◆ Register: [2026 Central Florida Safety Summit Tickets, Friday, May 8 from 10 am to 2 pm | Eventbrite](#)



The banner features a blue background with a white star in the center. The star has a red banner across it that says "GETTING TO ZERO TOGETHER". Below the star, it says "3rd Annual". The main text of the banner reads "CENTRAL FLORIDA SAFETY SUMMIT" in bold, followed by "FRIDAY, MAY 8, 2026 | 10AM - 2PM" and "Lavender on the Lake". At the bottom, it says "2596 Clay Whaley Rd, St. Cloud, FL 34772".

FDOT

★ ★ ★ ★ ★ **EVENT AGENDA** ★ ★ ★ ★ ★

FDOT D5 Secretary John Tyler

FDOT D5 Safety Administrator Loreen Bobo

SPEAKER TBD

Safety Strategic Plan Updates

Project Highlights throughout District 5

Central Florida Safety Awards

Last year's attendees received an additional Challenge Coin to give to someone for making a difference in traffic safety. Let us know who received your coin and why.

Thank you for your attention!

Project Resources:

- CFL Roads: www.cflroads.com
- District Five Office of Safety Website: <https://www.fdot.gov/d5safety>

Chuck Koppernolle

MPO Liaison
FDOT-5 Intermodal Systems Development
719 South Woodland Blvd
Deland, FL 32720

charles.koppernolle@dot.state.fl.us
(386) 943-5185





TURNPIKE WIDENING INFRASTRUCTURE INITIATIVE

Florida's Turnpike Enterprise

Agency Report

Lake-Sumter TAC/CAC Meeting | Wednesday, April 22, 2026



Weekly Lane Closure- 4/17/26 – 4/24/26



Northbound and Southbound Florida's Turnpike/S.R. 91 between Minneola/Hancock Rd and North of O'Brien Rd (Milepost 279 - 286) Overnight single lane closure, 9pm to 5am Monday April 19th and nightly through Thursday, April 23rd



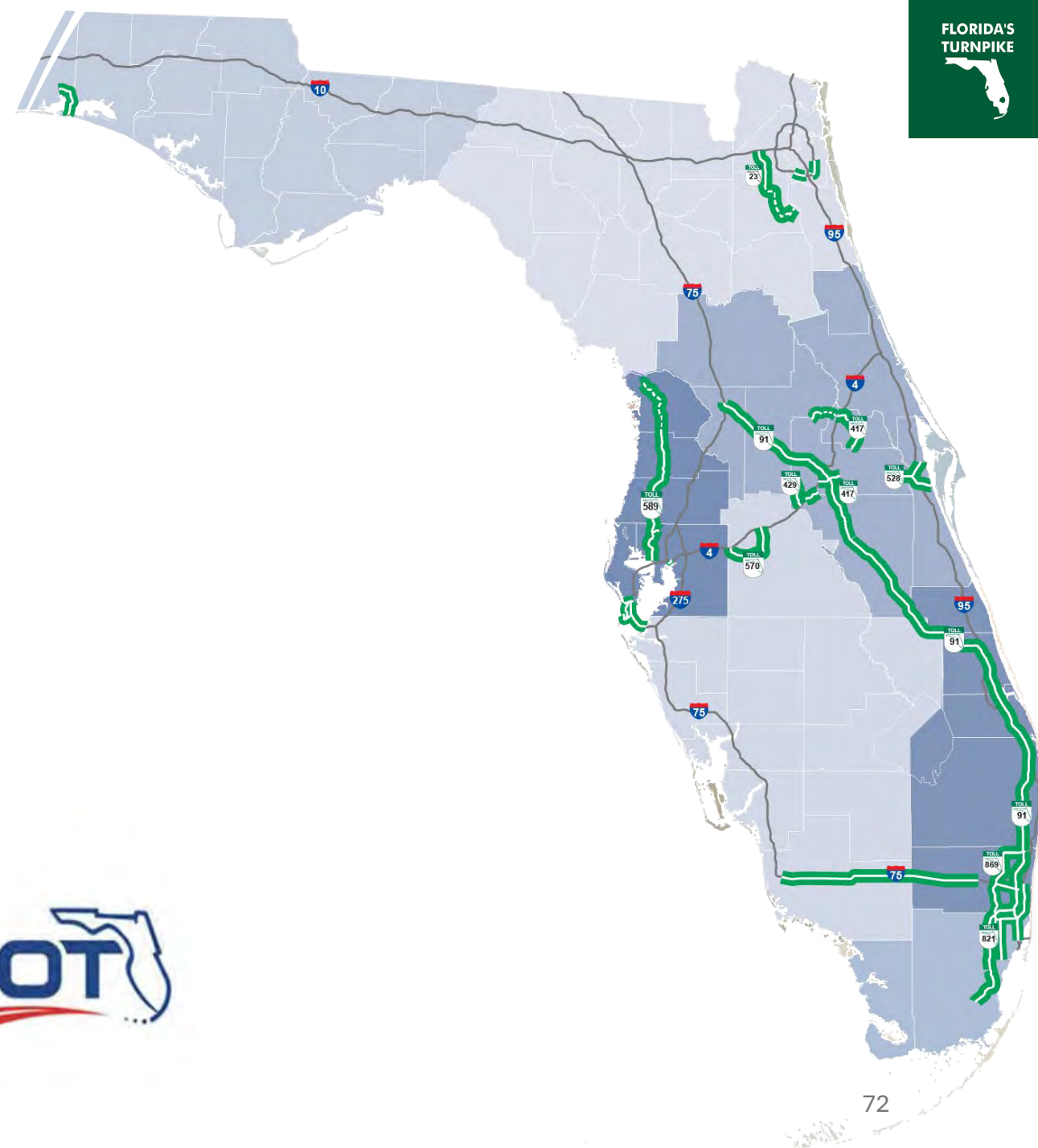
Southbound Florida's Turnpike/S.R. 91 entrance ramp from U.S.27 –Continuous full ramp closure, 10pm Friday, April 10, to 1pm Sunday, April 12

Traffic Updates/Lane Closures & Safety Initiatives

<https://floridasturnpike.com/traveler-resources/construction-updates/>

To help keep work zones safe:

- Move early into open lanes during work zone traffic shifts.
- Drive slowly, stay alert and avoid all distractions.
- Give workers extra room and slow down as you approach a work zone.
- Be prepared to stop.
- Plan ahead by researching your route to prepare for work zones.





SAVE THE DATE

MPOAC INSTITUTE MAY 1, 2026

Join us at the MPOAC Institute to deepen your knowledge and understanding of transportation planning processes and participate in interactive and engaging discussions.

● **DATE:**

Friday, May 1, 2026

● **TIME:**

9:00 am – 5:00 pm (*tentative*)

● **LOCATION:**

UF IFAS Extension Orange County
6021 Conway Rd.
Orlando, FL 32812

● Registration will open in
February 2026



BOARD MEMBER COMMENTS:

- **ADJOURNMENT**
- **NEXT MEETING: JUNE 18, 2026 @ 2:00 PM**