

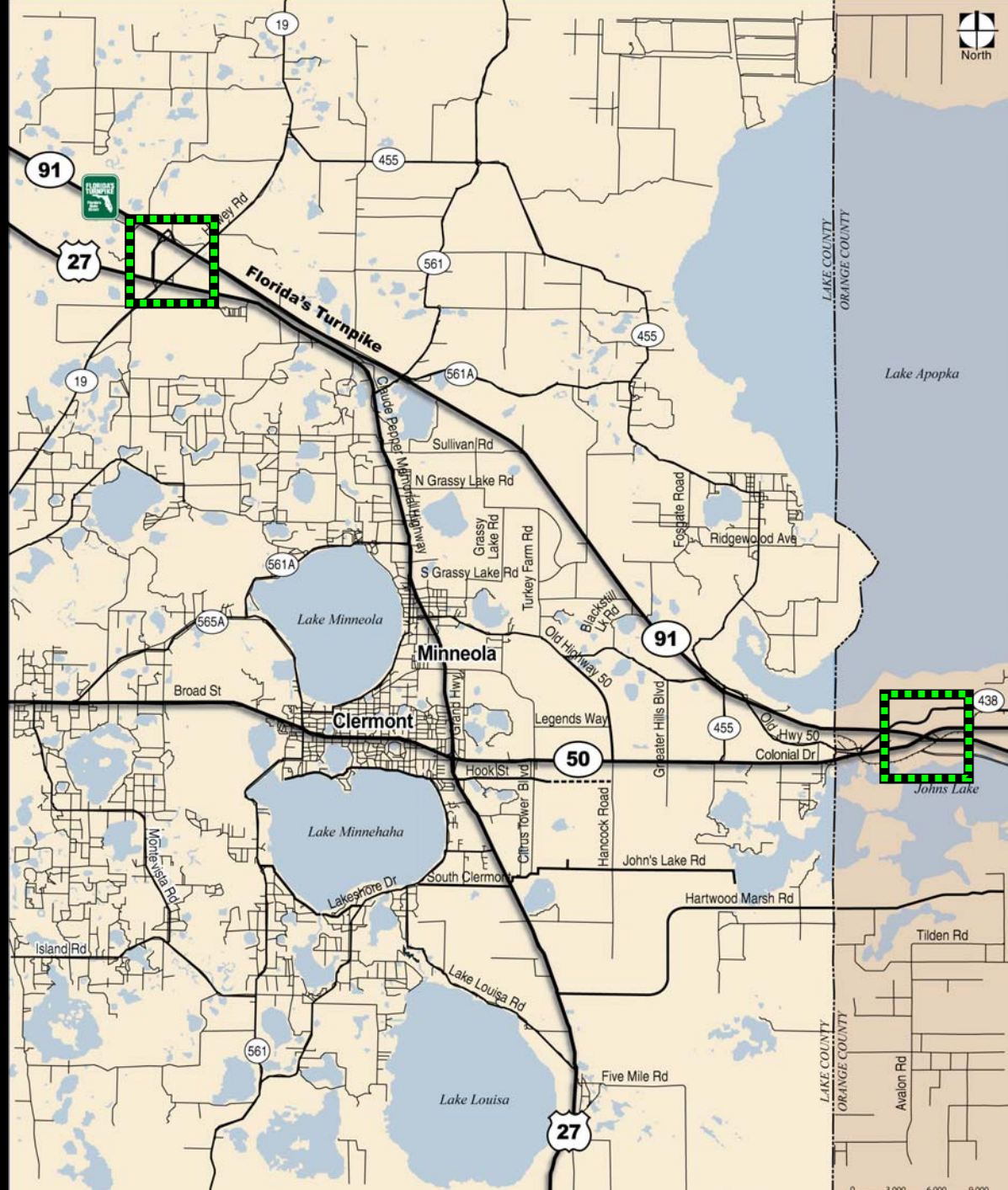
**Proposed Turnpike Interchange -
*An Opportunity for Public Private Partnership***

**Lake-Sumter Metropolitan
Planning Organization (MPO)
Transportation Concurrency Forum**

 **GLATTING JACKSON KERCHER ANGLIN**

Friday, March 9, 2007

Existing Regional Access

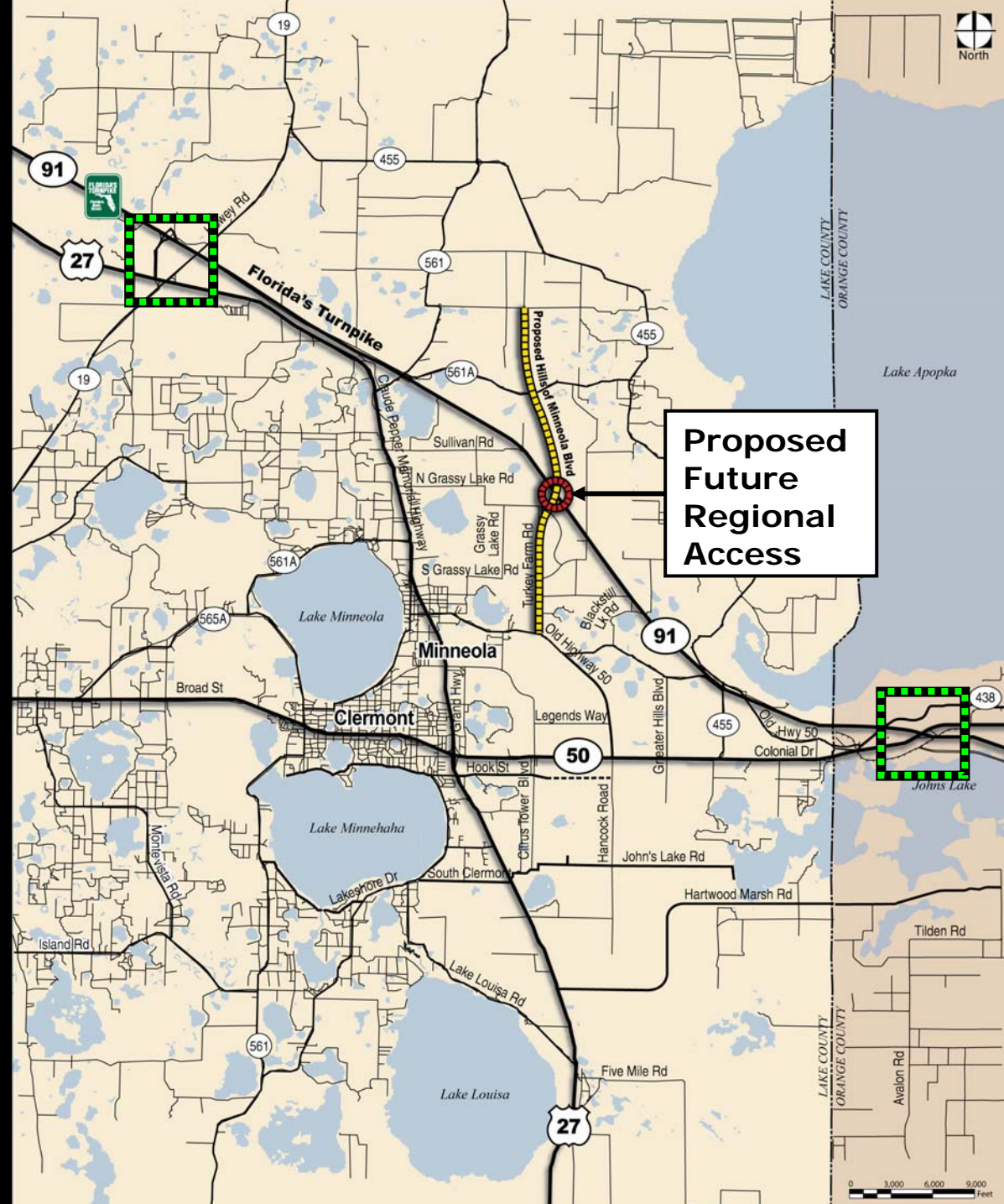


LEGEND

-  County Line
-  Lake County
-  Orange County



Proposed Future Regional Access



Proposed Future Regional Access

LEGEND

-  County Line
-  Proposed Roadway
-  Lake County
-  Orange County



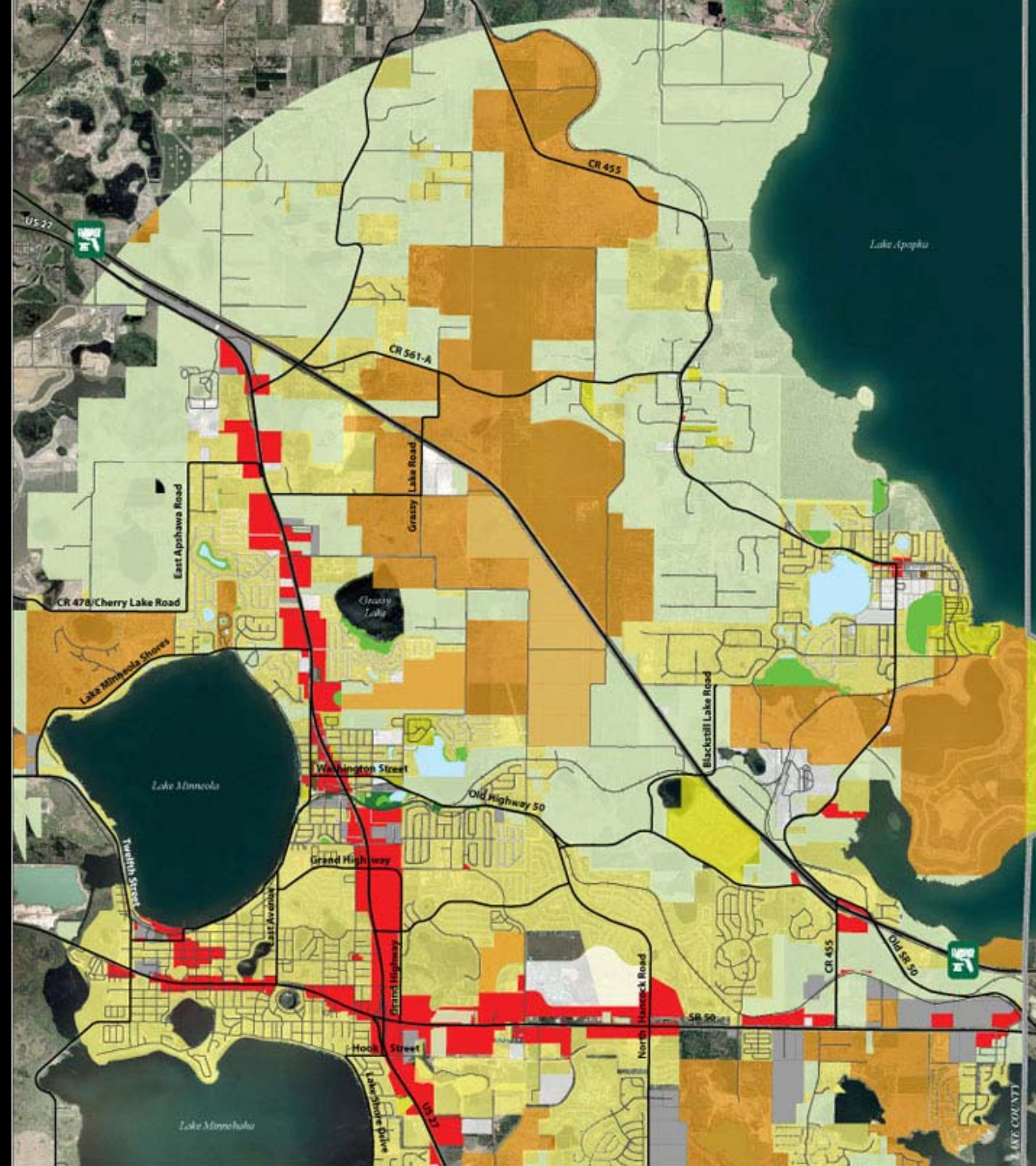
Existing Land Use

Legend

- County Boundary
- Major Roads (FDOT, 2007)
- Local Roads (FGDL, 2006)
- ++++ Railroads (State, FGDL, 2000)

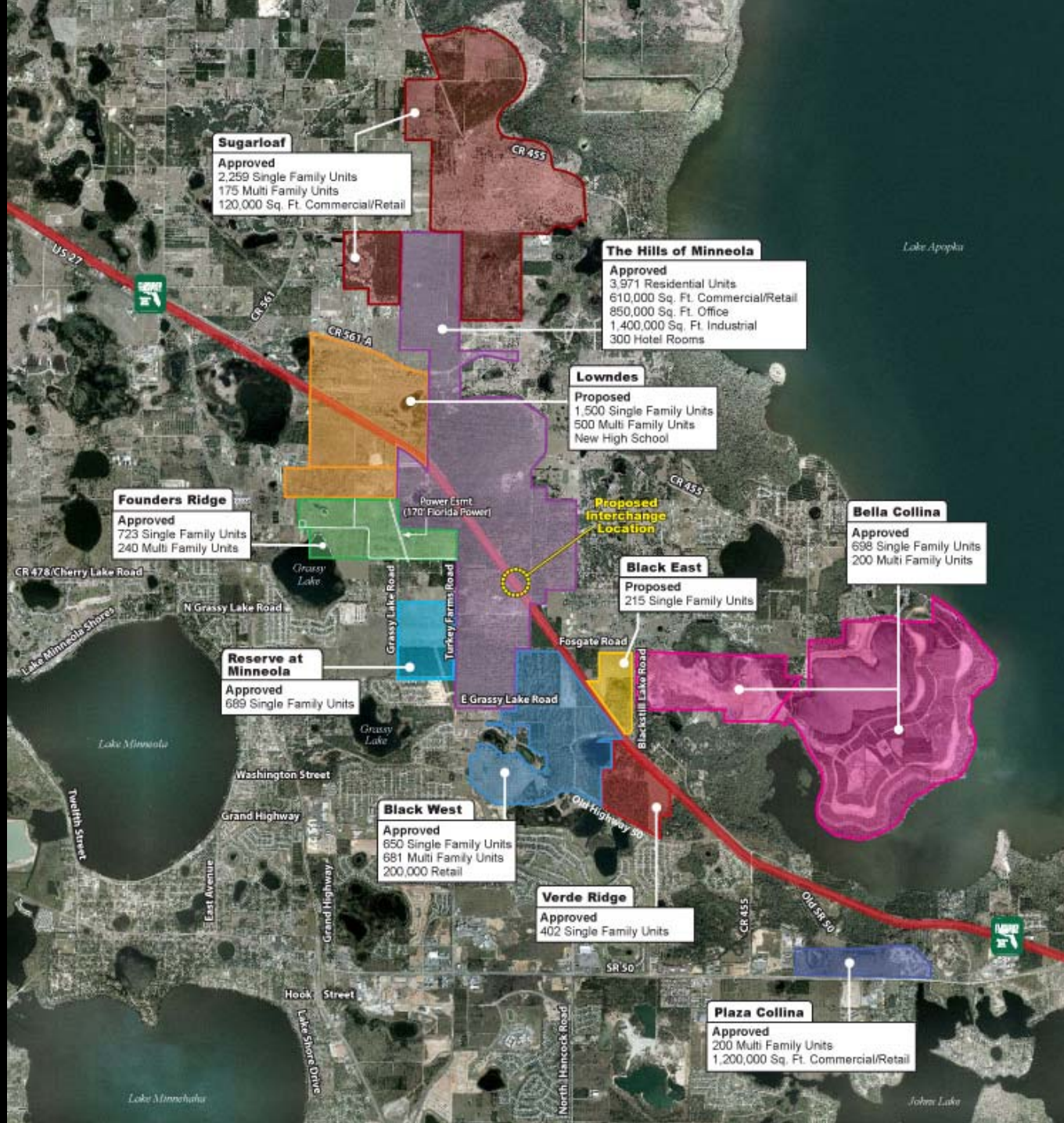
Zoning
(Lake County and the Cities of Clermont, Minneola, and Town of Montverde)

- Single Family Residential
- Multi-Family
- Agricultural
- Planned Unit Development
- Water
- Commercial
- Office
- Conservation
- Recreation
- Institutional / Public Facilities
- Industrial



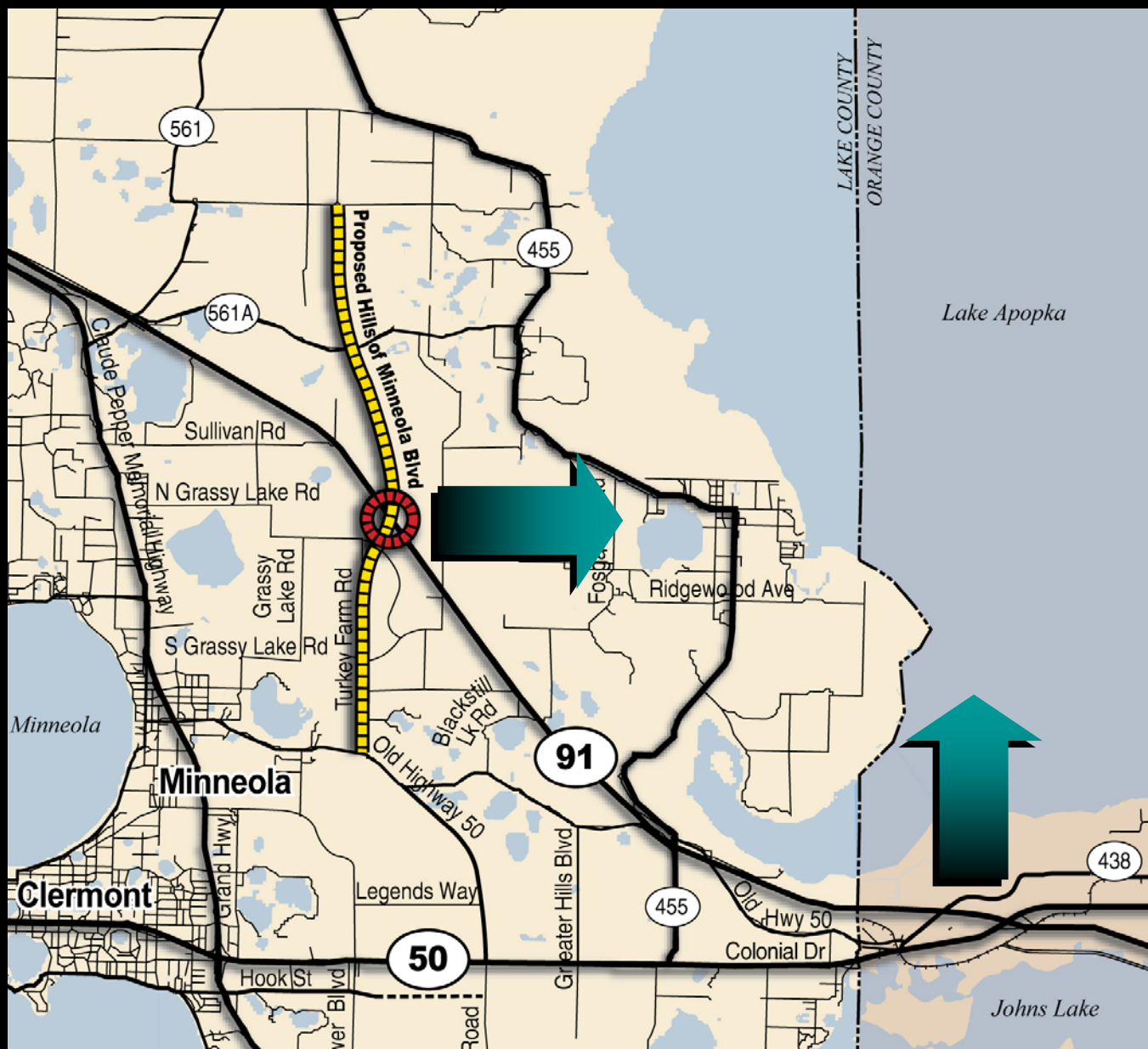
Proposed and Approved Future Development

- Over 930,000 sq. ft. of Commercial / Retail
- Over 2,000,000 sq. ft. of Office
- Over 1,400,000 sq. ft. of Industrial
- Over 13,000 units of Residential (Single and Multi-Family)



Limited Potential for New Regional Travel

- Existing regional roadway is congested
- No new opportunities for north/south or east/west regional travel
- Leverage access to existing north/south and east/west facilities
- Constrained roadway – CR 455



Who Benefits from New Regional Access

- State of Florida
- Lake County
- City of Minneola
- FDOT
- Town of Montverde
- City of Clermont
- Florida's Turnpike
- Current Residents
- Future Residents
- Landowners
- Lake-Sumter MPO
- Others

