

FLORIDA'S TURNPIKE ENTERPRISE



Lake – Sumter County MPO Summit

James L. Ely, DPA, Executive Director and CEO
October 27, 2005

FLORIDA'S TURNPIKE ENTERPRISE



Mission Statement

To help meet the State's growing transportation needs, ensuring value to customers, protecting investors and managing the Turnpike System in a business-like manner

FACTS ABOUT THE ENTERPRISE



- ❖ **Enterprise is part of FDOT**
- ❖ **Largest Toll System in Florida – 460 miles**
 - ❖ **4th Largest Toll System in Nation**
- ❖ **AA Bond Rating – Highest in the Nation**
- ❖ **Serves over 1.8 million customers per day**

TURNPIKE HEADQUARTERS

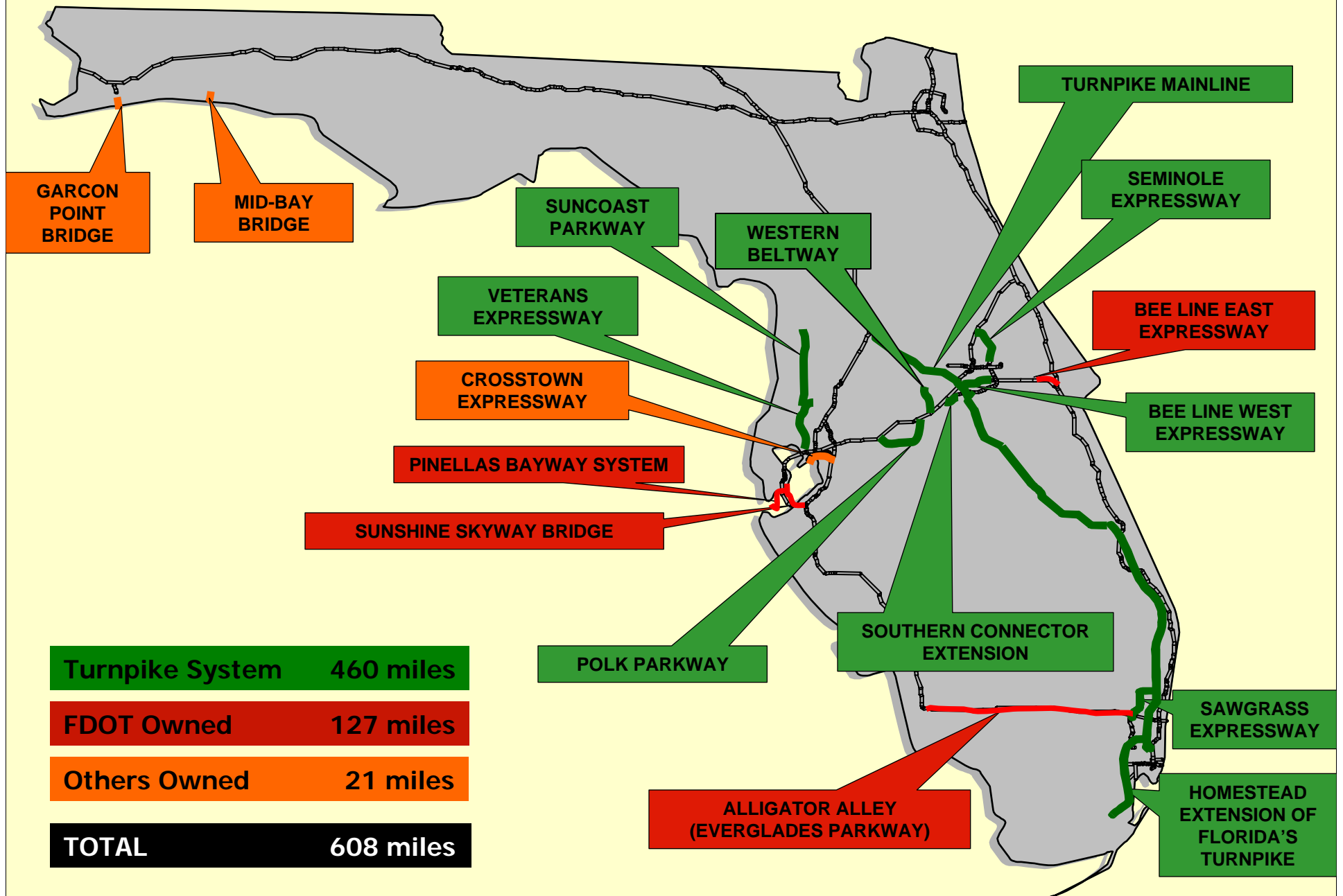


Right here in Central Florida!

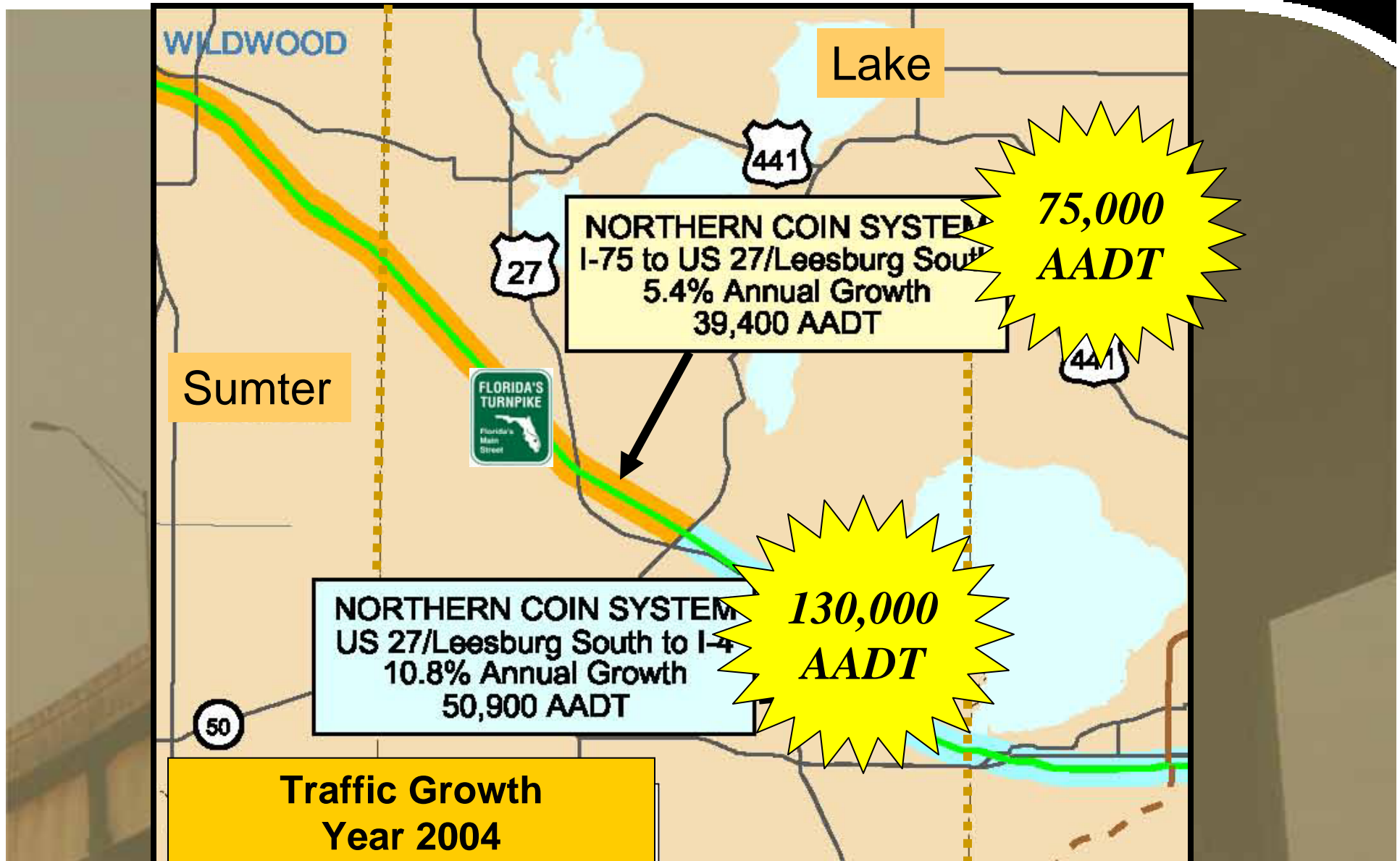


At Turkey Lake Service Plaza

FLORIDA'S TURNPIKE ENTERPRISE



TRAFFIC GROWTH



INTRODUCING



Mr. Steve Berry

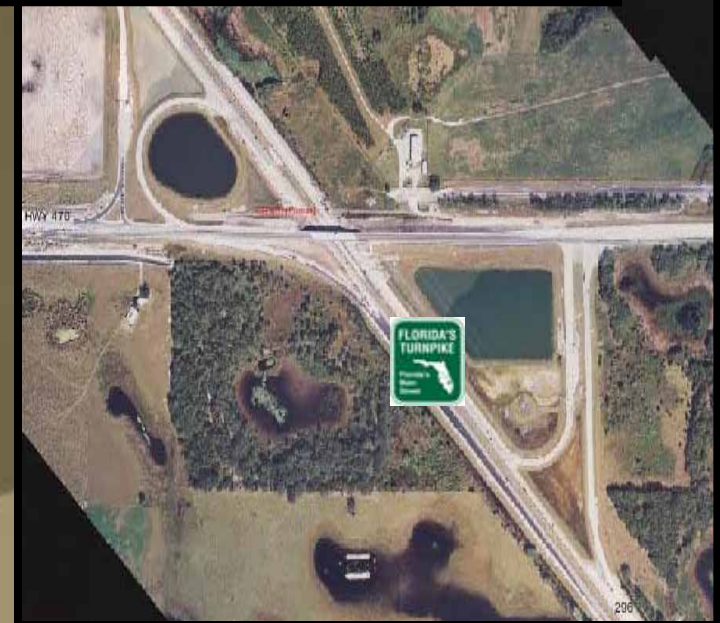
Mayor of
Montverde &

Turnpike
Emergency
Management
Coordinator

CR 470 INTERCHANGE



- ❖ Opened to Traffic in December 2005
- ❖ Total cost: \$18 million
- ❖ Funding Partnership with FHWA
- ❖ Partnership with City of Leesburg on Interchange Beautification - Streetlights

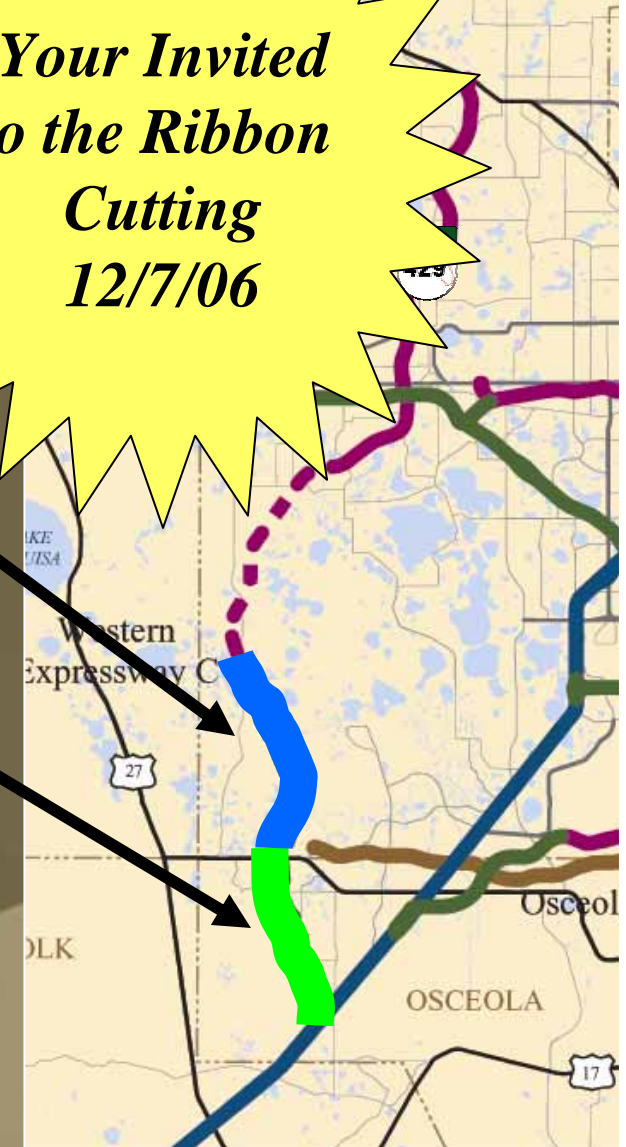


WESTERN BELTWAY



- ❖ \$313.9 Million Project
- ❖ Partnership with OOCEA
- ❖ Seidel Road to US 192 open December 2005
- ❖ US 192 to I-4 to open December 7, 2006

*Your Invited
to the Ribbon
Cutting
12/7/06*



RESURFACING/GUARDRAIL



Lake County

Resurface Milepost 275.7 to 281.8 recently completed

Sumter County

Guardrail installation completed in April 2005

Resurfacing Scheduled for 2008



FHP estimates that guardrails save 50 lives per year

LEESBURG MAINLINE PLAZA



- ❖ Adding 4 new cash lanes=
 - ❖ 6 cash lanes/1 SunPass in each direction
- ❖ Design/Build Project
- ❖ Started in Sept. 05
- ❖ Complete Dec. 06
- ❖ \$ 10 Million Project



CR 468 INTERCHANGE



- ❖ Future interchange to be funded by the Villages
- ❖ Just North of the Okahumpka Service Plaza
- ❖ ROW has been acquired
- ❖ Preliminary Design underway
- ❖ Partial Cloverleaf Interchange Design
- ❖ Scheduled opening 2008/2009



SR 50/CLERMONT MP272



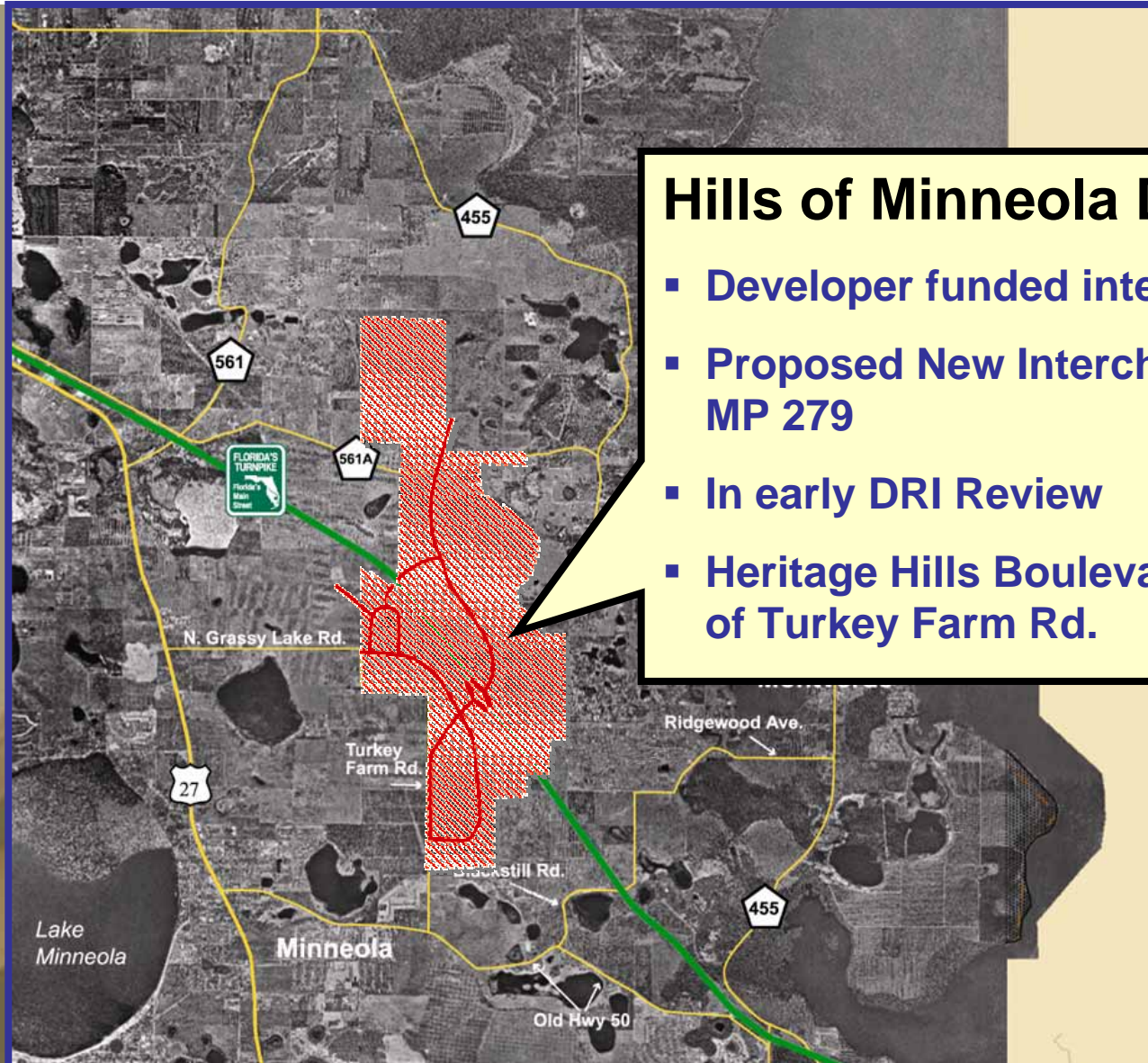
TWO PROJECTS



❖ Extend NB Exit Ramp & replace 4th Street Bridge: Construction started in Oct 05

❖ New NB Entrance Ramp \$ 3.92 M Scheduled with widening from Beulah to SR 50 in FY 2011/12

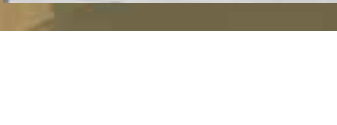
MP 279 INTERCHANGE



Hills of Minneola DRI

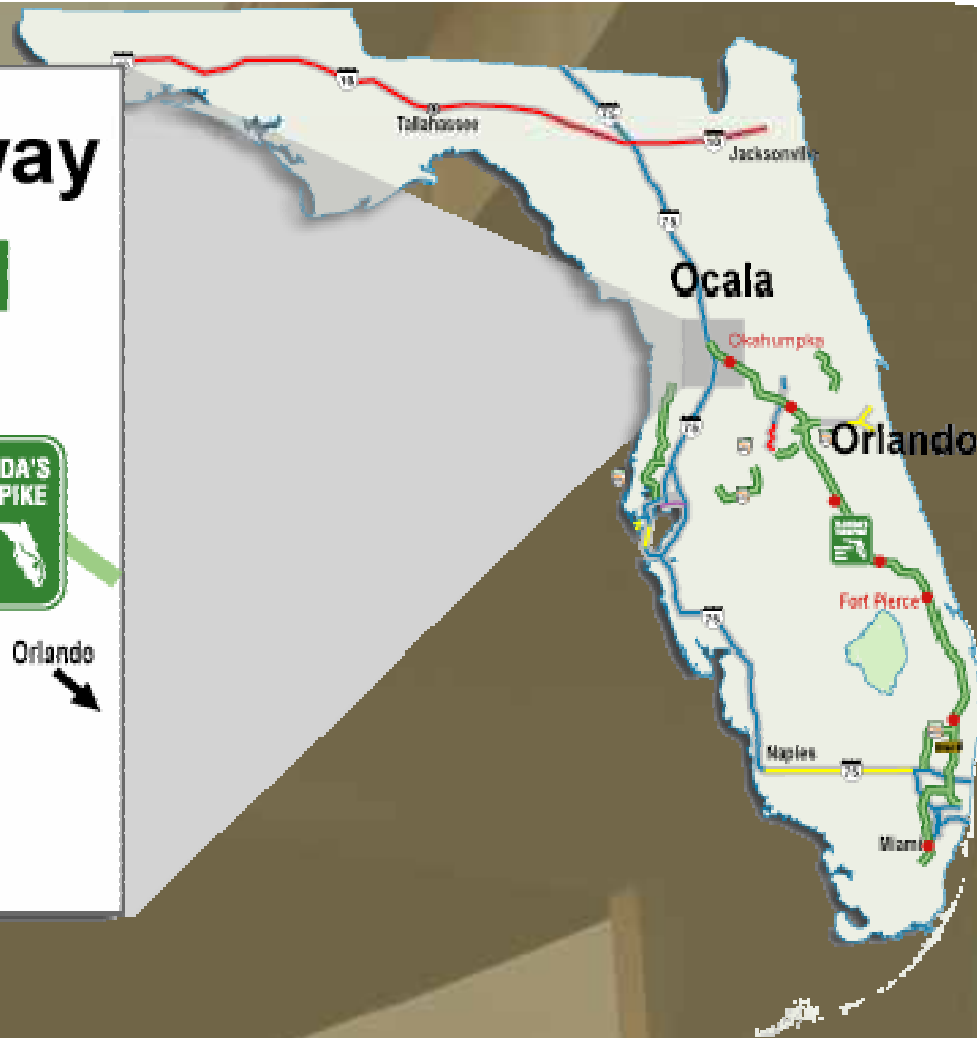
- Developer funded interchange
- Proposed New Interchange near MP 279
- In early DRI Review
- Heritage Hills Boulevard extension of Turkey Farm Rd.

SERVICE PLAZAS



- ❖ Upgrade Service Plazas to better serve market demands
- ❖ 35 million customers visit 8 Service Plazas annually
- ❖ 2004 Service Plaza Survey
 - ❖ 88% "Good" Food Service
 - ❖ 89% "Good" Fuel Service
- ❖ New Gateway Service Plaza is proposed to be near the US 301 Exit and include a hotel and conference center

GATEWAY LOCATION



30 million motorists will travel this section in 2007

WILTON PARTNERS CONCEPT



WILTON PARTNERS MASTERPLAN



Gateway Village

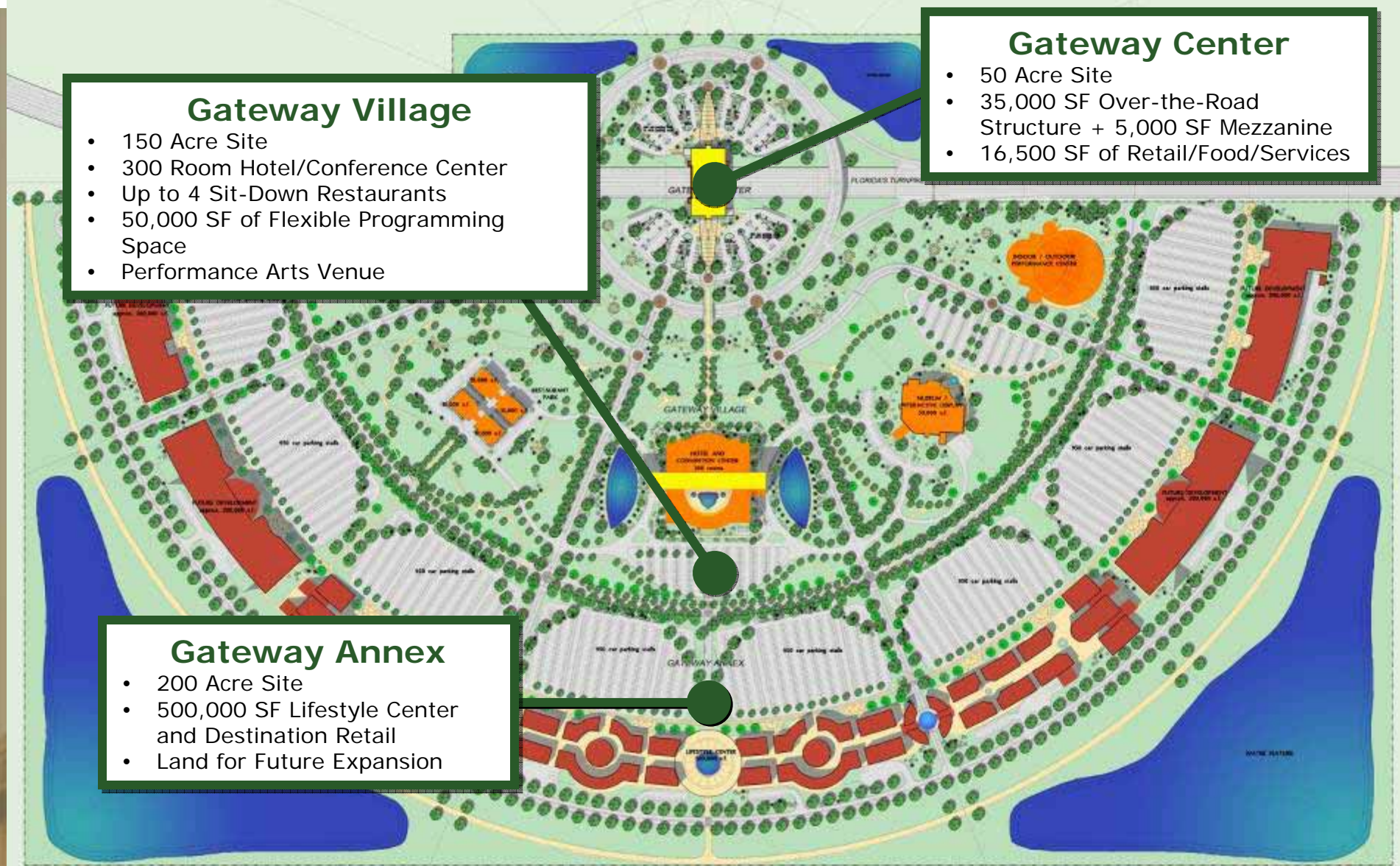
- 150 Acre Site
- 300 Room Hotel/Conference Center
- Up to 4 Sit-Down Restaurants
- 50,000 SF of Flexible Programming Space
- Performance Arts Venue

Gateway Center

- 50 Acre Site
- 35,000 SF Over-the-Road Structure + 5,000 SF Mezzanine
- 16,500 SF of Retail/Food/Services

Gateway Annex

- 200 Acre Site
- 500,000 SF Lifestyle Center and Destination Retail
- Land for Future Expansion

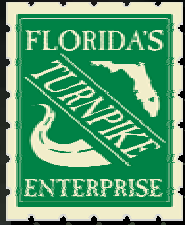


GATEWAY OPENING



Open
2007

50th
Anniversary



SunPass

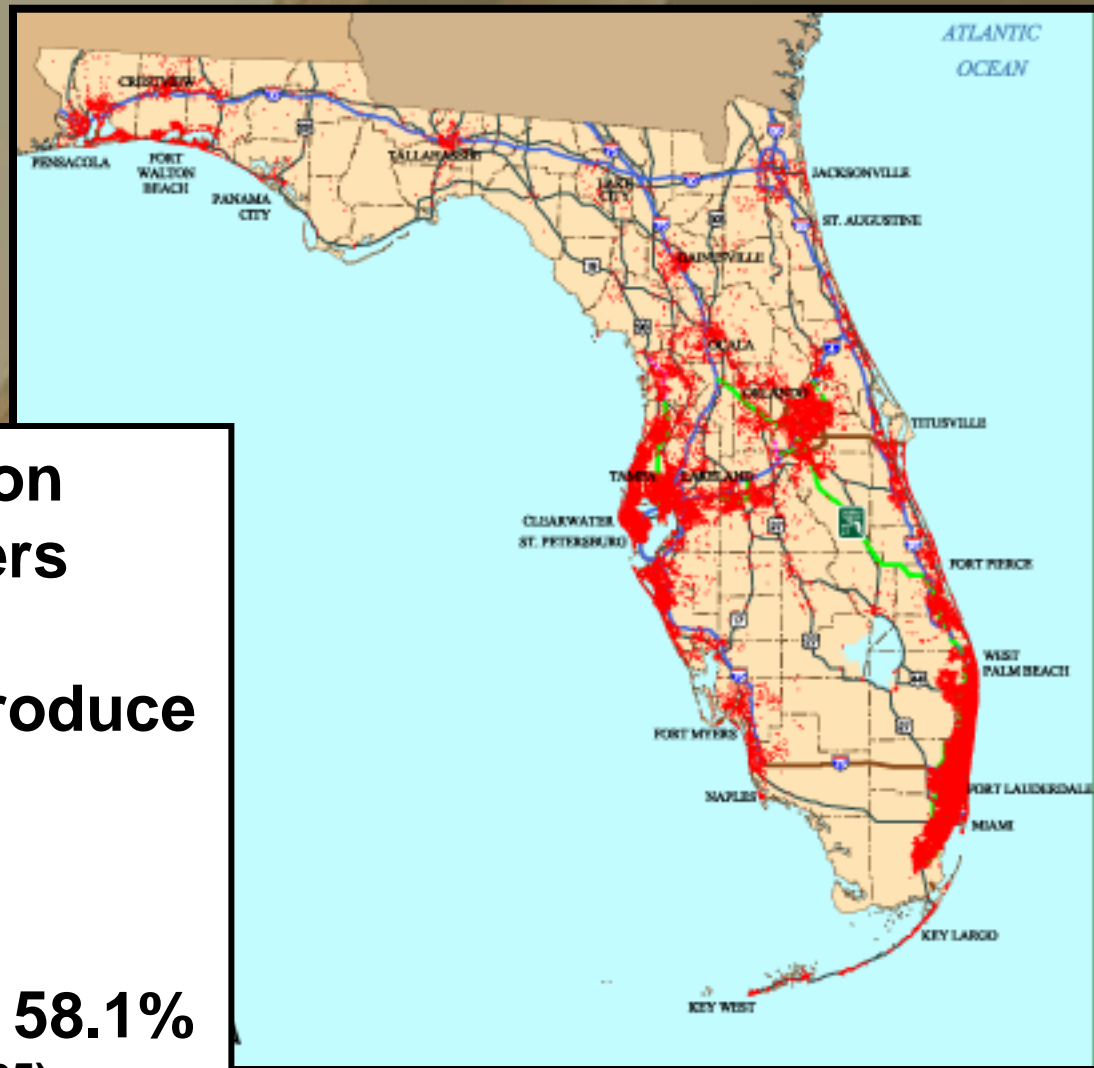


Turnpike's version of Electronic Toll Collection (ETC)

SunPass transponders accepted on toll facilities statewide

Interoperable with 500,000 E-Pass accounts

SUNPASS SATURATION



- **More than 2.0 Million Active Transponders**
- **First agency to introduce widespread retail distribution**
- **Statewide Usage = 58.1%**
(As of September 2005)

THANK YOU

