

# **OOCEA Briefing to the Lake Sumter MPO**

**October 27, 2005**



# Overview

- **Created in 1963 by the Florida Legislature to construct limited access toll roads throughout Central Florida**
- **Oversight by five member Board – three gubernatorial appointees, two Ex-Officio members**
- **Privatized operation consisting of a lean staff of 43 employees**



# Expressway Authority Board

- **Allan E. Keen, Chairman**
  - Chairman & Owner; The Keewin Real Property Company
- **Orlando L. Evora, Vice Chairman**
  - Co-Managing Shareholder; Greenberg, Traurig
- **Arthur J. Lee, Secretary/Treasurer**
  - President; Lee, Wesley & Associates
- **George Gilhooley, Ex-Officio**
  - Secretary, District Five; FDOT
- **Richard T. Crotty, Ex-Officio**
  - Mayor; Orange County



# *E-PASS*

- **Celebrated the 10-Year Anniversary last year - deployed in May 1994 - first in state**
- **Gateless system**
- **Over 460,000 active transponders**
- **Over 70% peak hour system wide ETC usage**
- **Over 60% 24-hour system wide ETC usage**



# *E-PASS*

- **E-PASS now a payment option at Orlando International Airport parking facilities**
- **The Expressway Authority worked closely with GOAA & Florida's Turnpike Enterprise to make this convenient technology a reality for our customers**
- **Began operation in February 2005**
- **E-PASS/SunPass used as payment option for 27% of total revenue**

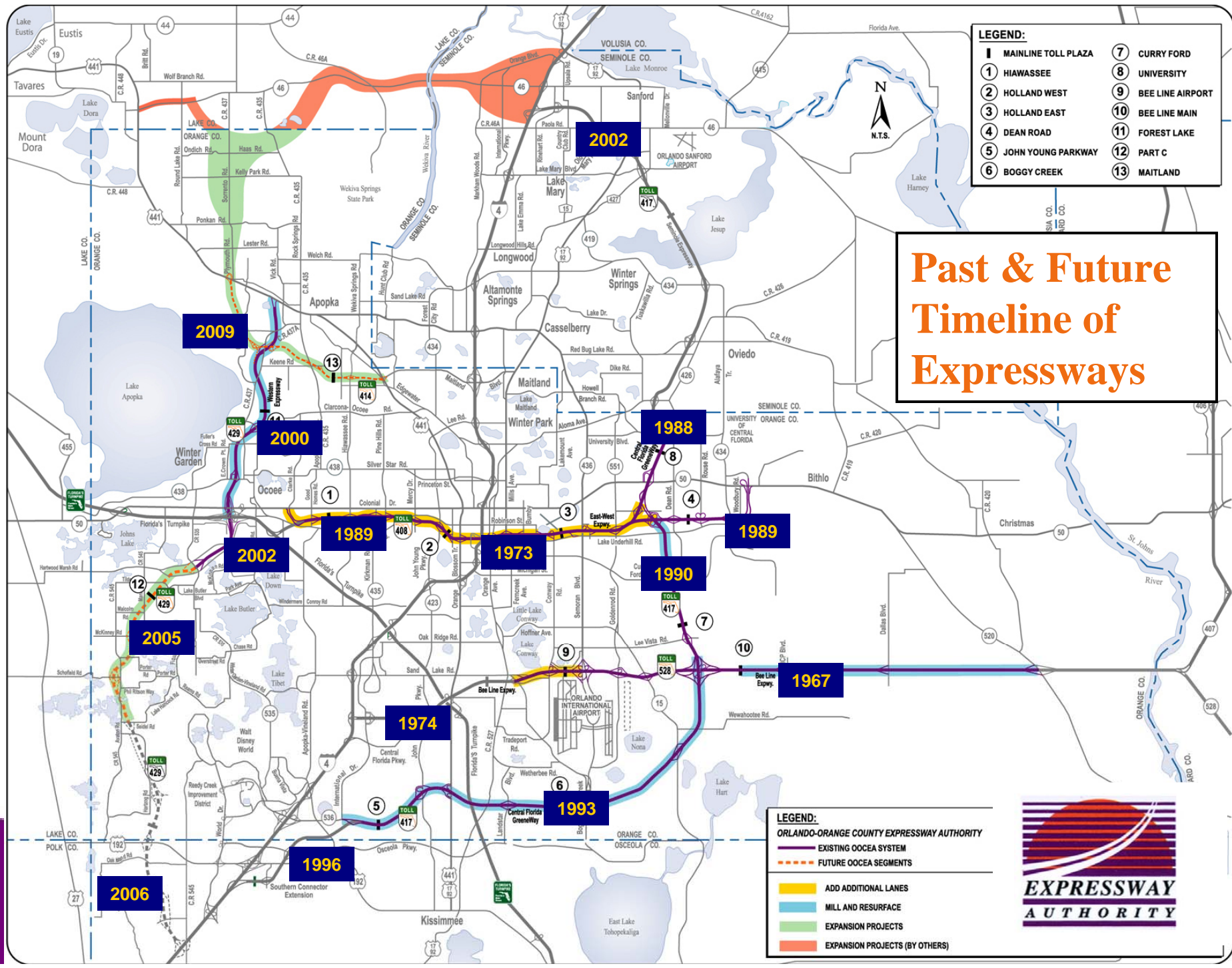


# *E-PASS*

## County by County Breakdown of E-PASS Accounts

<b>Orange</b>	<b>134,388</b>	<b>47%</b>
<b>Seminole</b>	<b>46,117</b>	<b>16%</b>
<b>Lake</b>	<b>14,936</b>	<b>5%</b>
<b>Osceola</b>	<b>10,132</b>	<b>4%</b>
<b>Other</b>	<b>79,027</b>	<b>28%</b>
<b>Total Accounts</b>	<b>284,600</b>	<b>100%</b>





**LEGEND:**

1	MAINLINE TOLL PLAZA	7	CURRY FORD
2	HIWASSEE	8	UNIVERSITY
3	HOLLAND WEST	9	BEE LINE AIRPORT
4	HOLLAND EAST	10	BEE LINE MAIN
5	DEAN ROAD	11	FOREST LAKE
6	JOHN YOUNG PARKWAY	12	PART C
	BOGGY CREEK	13	MAITLAND

# Past & Future Timeline of Expressways

**LEGEND:**

ORLANDO-ORANGE COUNTY EXPRESSWAY AUTHORITY	
	EXISTING OOCEA SYSTEM
	FUTURE OOCEA SEGMENTS
	ADD ADDITIONAL LANES
	MILL AND RESURFACE
	EXPANSION PROJECTS
	EXPANSION PROJECTS (BY OTHERS)



# Finances





# Finances

- **FY 2005 gross toll revenue: \$183.6 million**
- **Budget FY 2006: \$200 million**
- **Average toll: \$.67 per toll transaction**
- **Total annual toll transactions: 300 million**



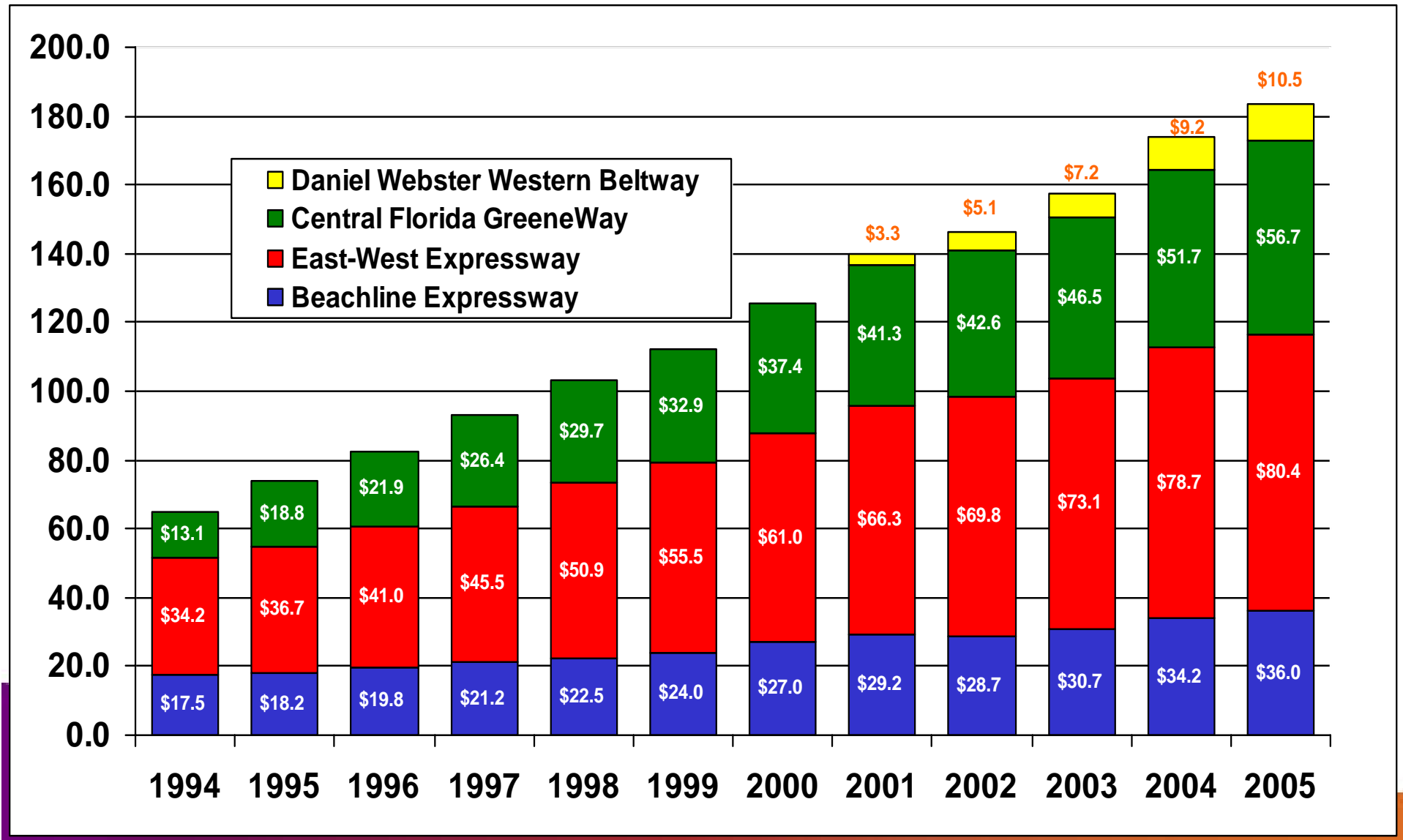
# Finances

- **Funded directly by user fees**
- **Not a burden on county tax payers**
- **Monies collected stay local to benefit entire Central Florida region**

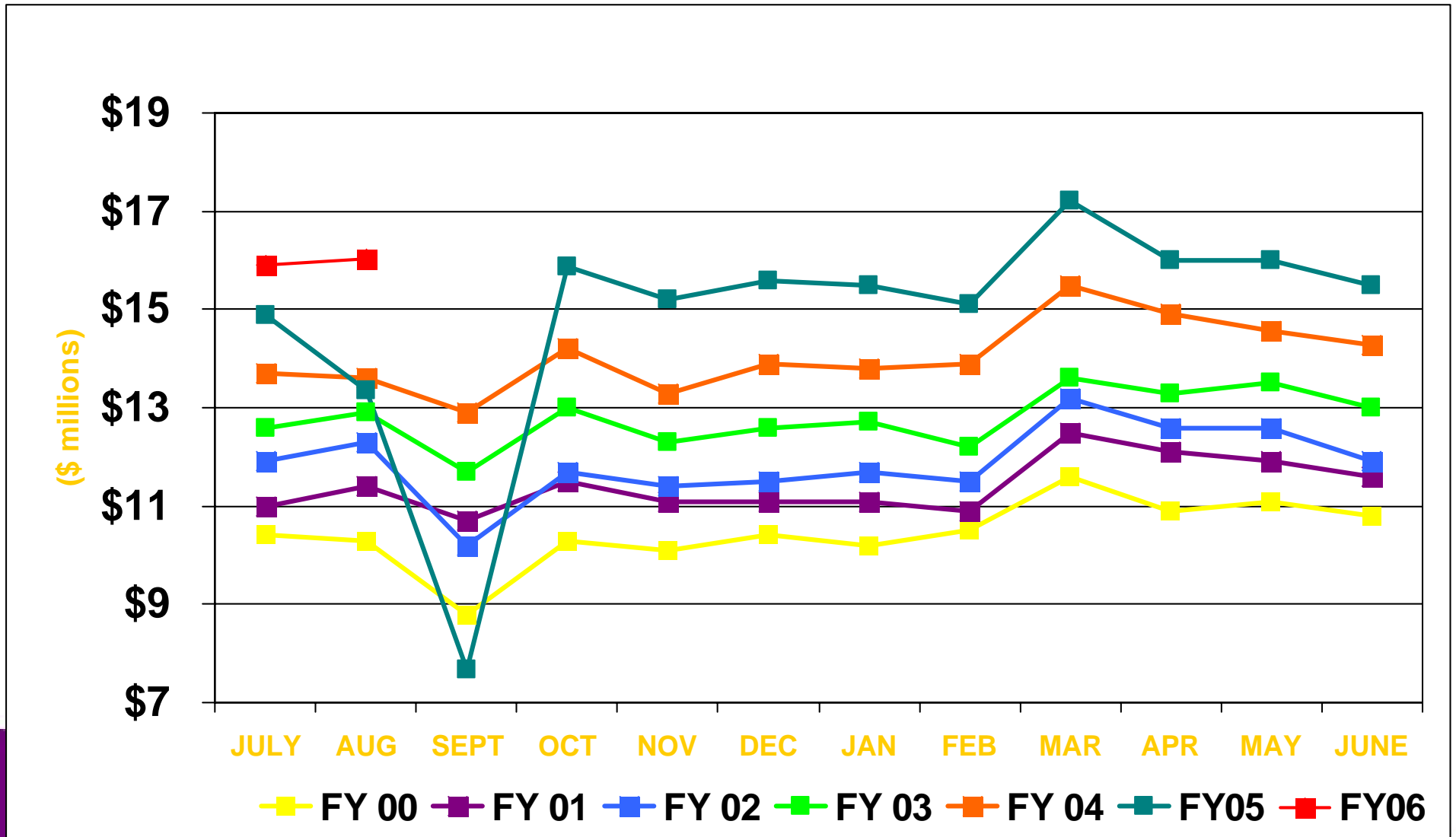


# Financial Performance

## FY 1994 to FY 2005 Toll Revenue



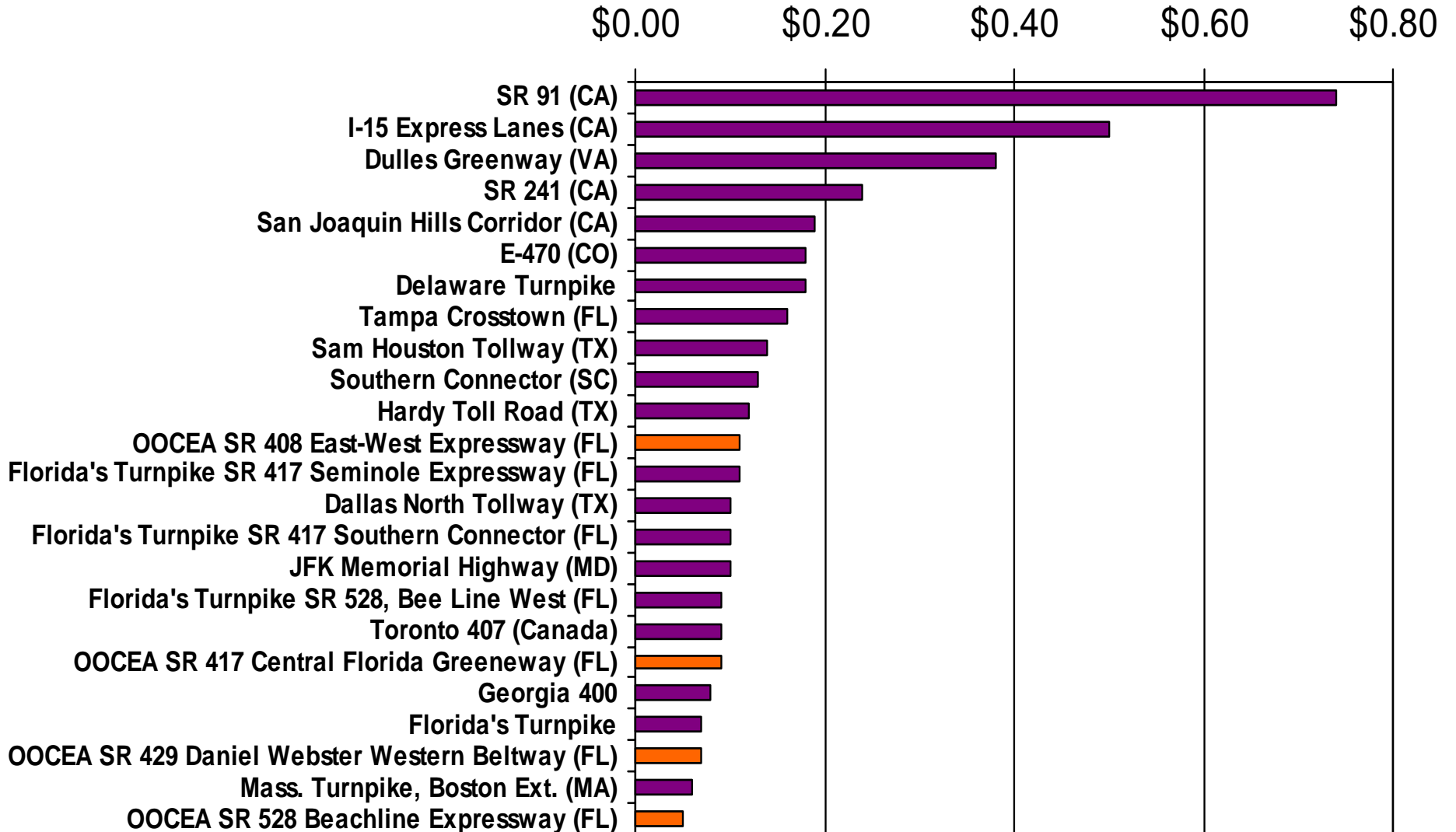
# Seven-Year Monthly Revenue Trend



Projected Percentage of System Revenues Shown for FY 2004 and FY 2042

Source: System Traffic and Earnings Report (Final Draft)

# Toll Rate Comparison



# Planning



# Five-Year Work Plan

- **More than \$1 billion**
- **Equates to 50,000 new jobs in our community**



# Five-Year Work Plan

<b>Projected Cost Summary</b> (in Thousands)	<b>FY 2006</b>	<b>FY 2007</b>	<b>FY 2008</b>	<b>FY 2009</b>	<b>FY 2010</b>	<b>Total</b>
<b>Existing System Projects</b>	\$114,823	\$138,297	\$86,283	\$6,133	\$1,690	\$347,226
<b>System Expansion Projects</b>	\$52,945	\$149,362	\$118,084	\$93,741	\$850	\$414,982
<b>Interchange Projects</b>	\$18,870	\$33,969	\$4,183	\$7,702	\$19,596	\$84,320
<b>Toll Facilities Projects</b>	\$60,176	\$26,008	\$22,414	\$13,547	\$200	\$122,345
<b>Intelligent Trans Systems</b>	\$14,764	\$7,838	\$3,144	\$3,154	\$3,369	\$32,269
<b>Signing and Pavement Renewal and Replacement</b>	\$2,964	\$500	\$500	\$500	\$500	\$4,964
	\$7,963	\$11,847	\$14,324	\$15,158	\$4,206	\$53,498
<b>Landscape Projects</b>	\$1,417	\$1,082	\$1,000	\$1,000	\$1,000	\$5,499
<b>Total</b>	\$273,922	\$368,903	\$249,932	\$140,935	\$31,477	\$1,065,103



Source: OOCEA Five-Year Work Plan – Adopted August 2005

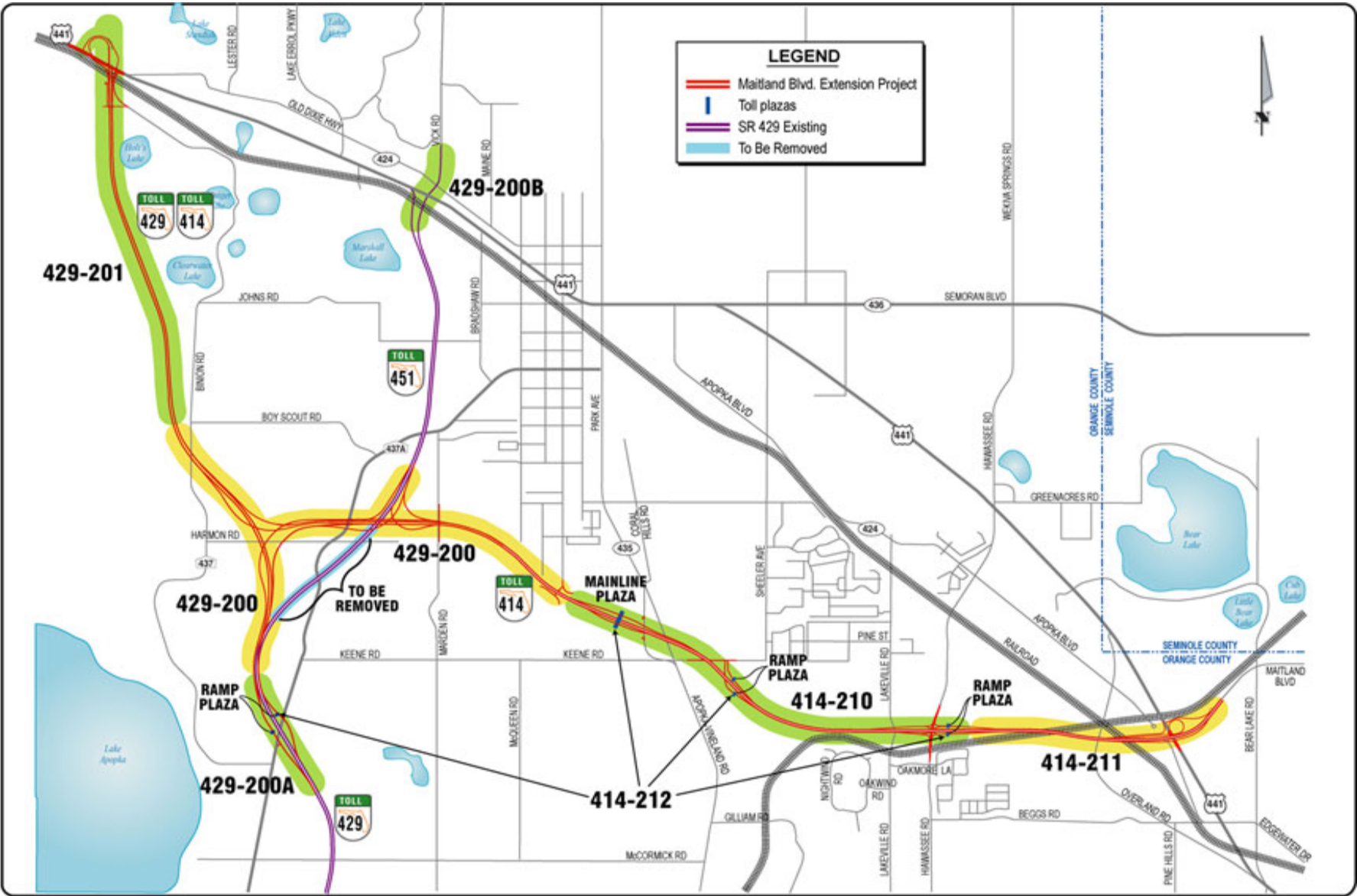


# Partnerships

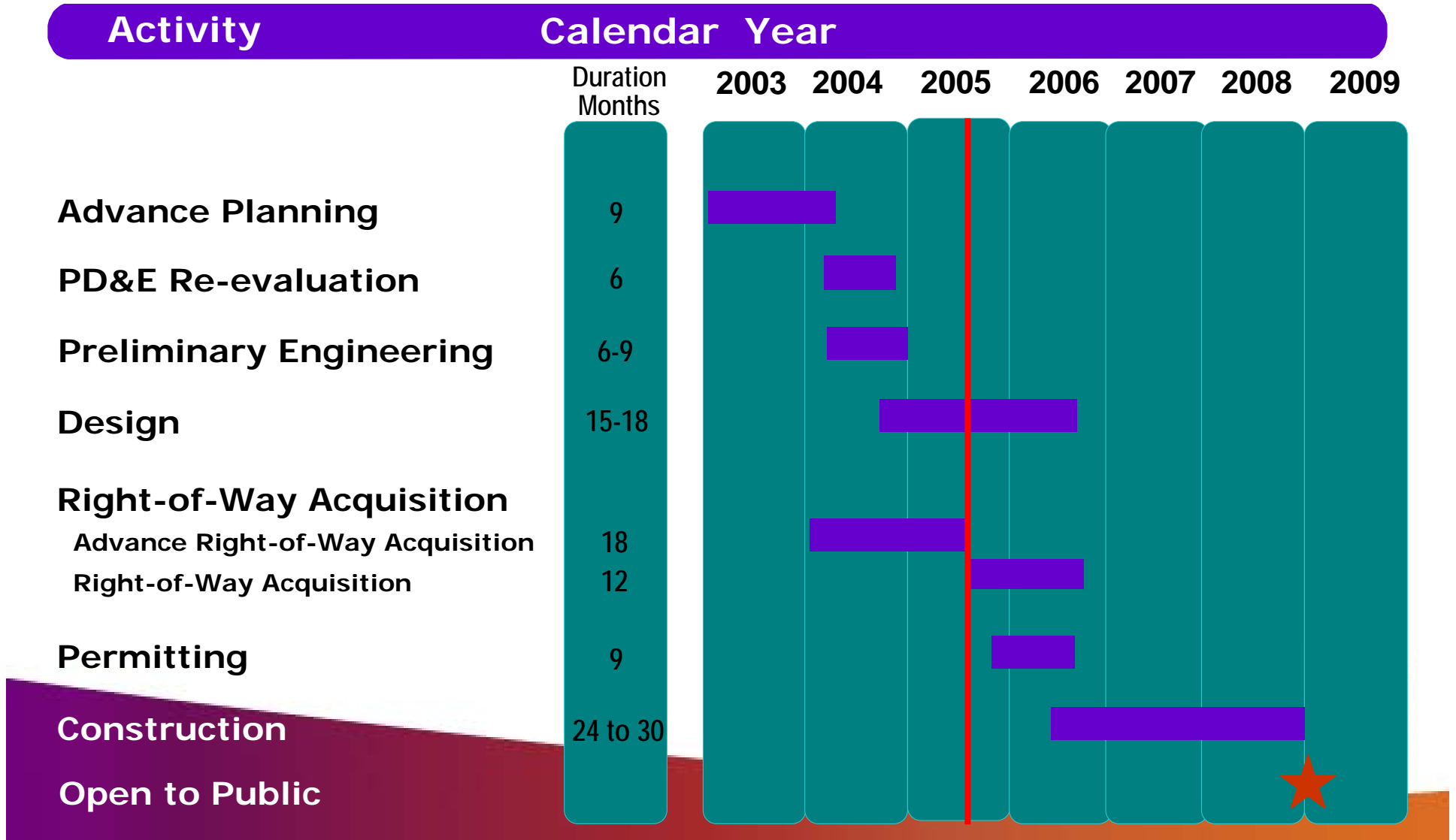
- **Maitland Blvd. Extension (SR 414)**
  - **\$394 million project**
  - **Received \$35 million commitment from State Infrastructure Bank (SIB) program**
- **Wekiva Parkway**
  - **Executive Order of the Governor**
  - **Bill Signed in June 2004**
  - **Consensus agreement between pro-development and environmental representatives**
  - **Result of two years of work of the Wekiva Task Force and Wekiva Coordinating Committee**



# Maitland Boulevard Extension



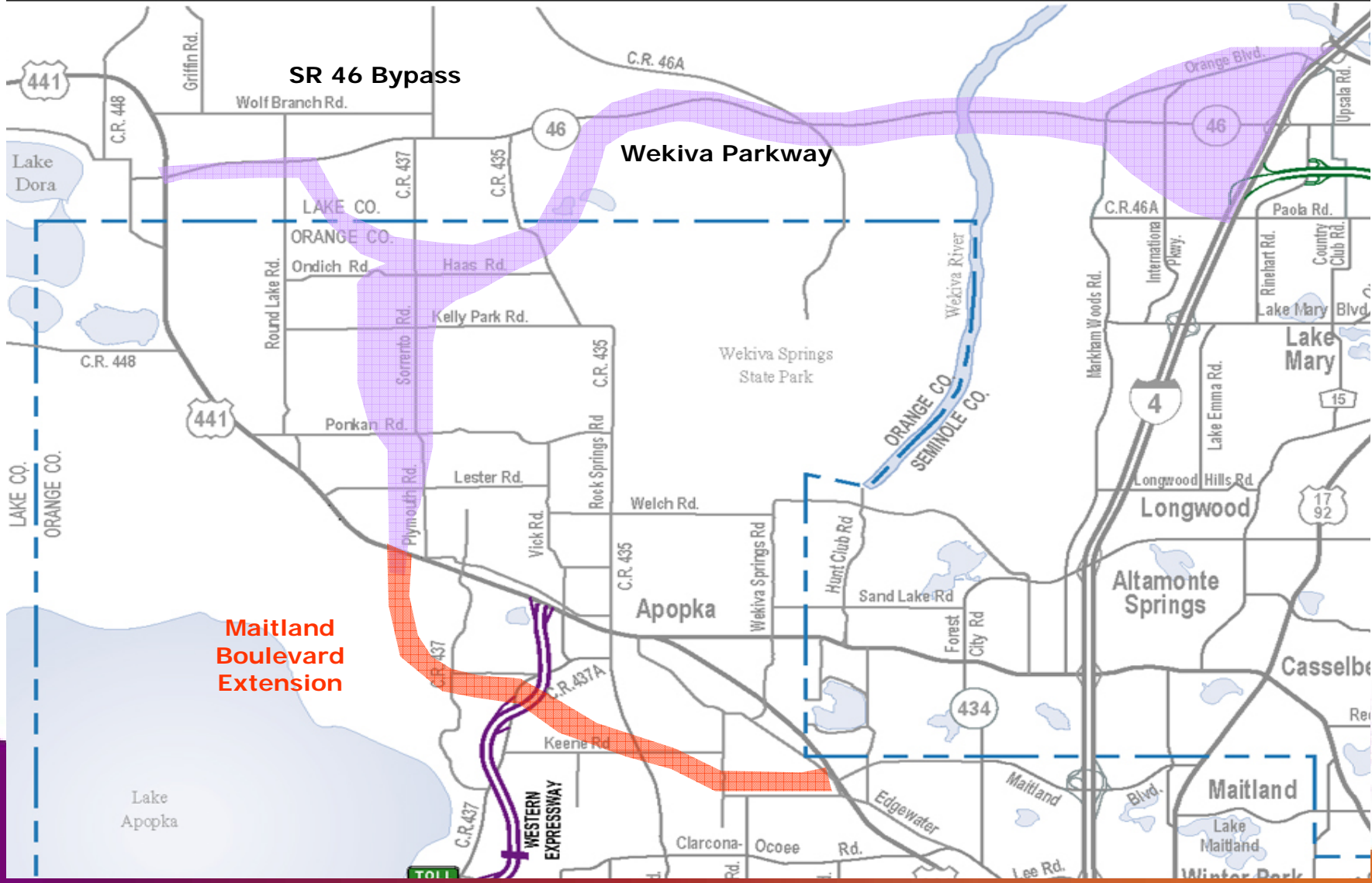
# Maitland Boulevard Extension

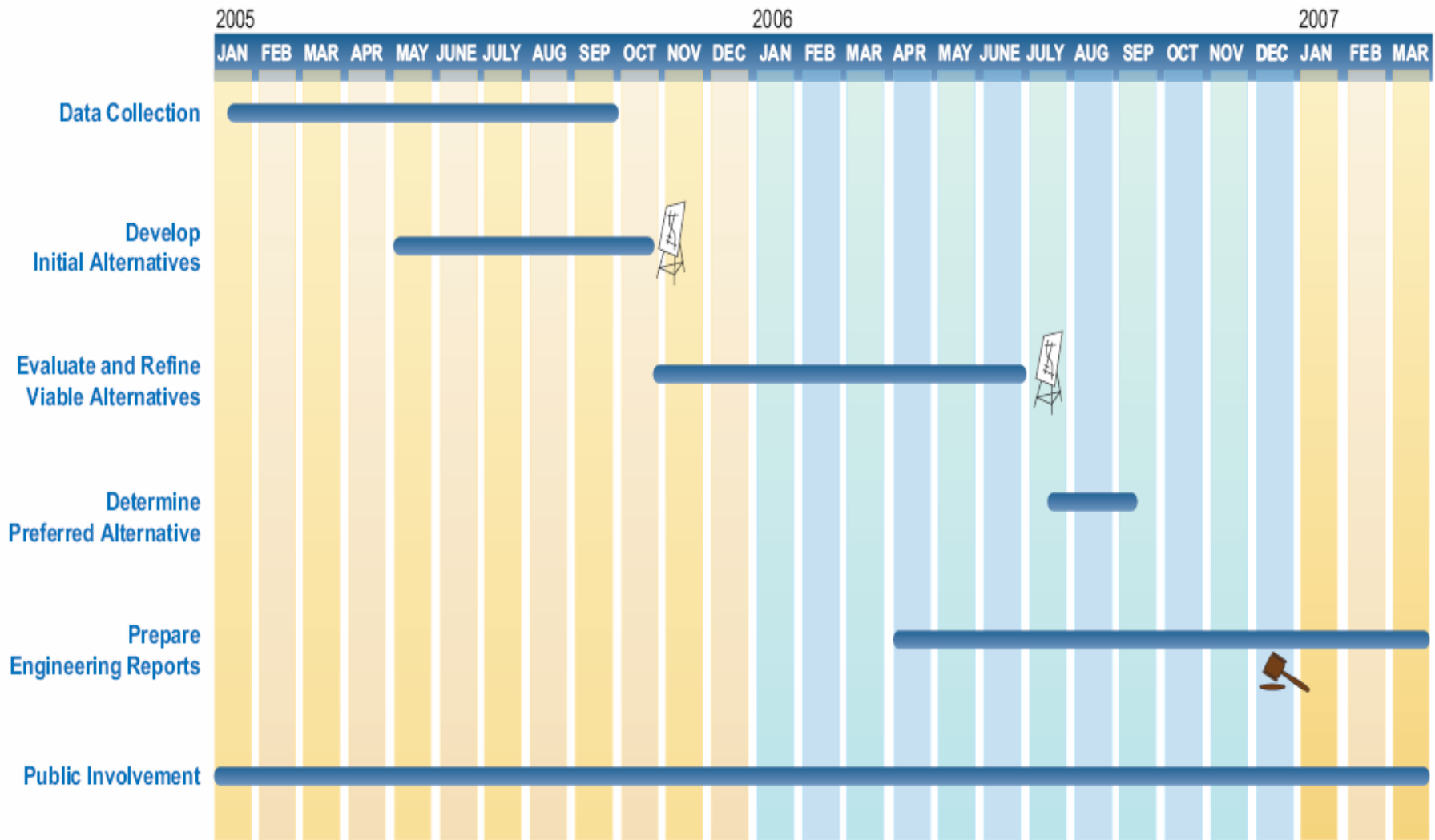


# Maitland Boulevard Extension Bridge Treatments on SR 414 at US 441



# Wekiva Parkway





This project schedule is intended to provide you with information on upcoming activities and events. These dates are subject to change.



# WEKIVA PARKWAY PD&E STUDY

## Project Schedule

# The Future & Beyond



# The Future & Beyond

- **Additional community partnerships are always welcome as the Expressway Authority constantly looks for ways to improve its services for the region**
- **Investigating opportunities for E-PASS transponders as to be used as a payment option in a variety of locations to enhance customer service**





# Toll Industry Trends

- **Current competing technologies prohibit regional/national interoperability**
- **It is the goal of industry leaders to have nationwide interoperability**
- **Automobile industry is aiding this goal by including transponders in vehicles**
- **Over the next 10 years, this will be a common feature in vehicles**



# Thank You!

*The Expressway Authority is committed to building & operating a better, safer & faster expressway system.*

525 S. Magnolia Avenue  
Orlando, FL 32801

407.316.3800

[ExpresswayAuthority.com](http://ExpresswayAuthority.com)

*We get you there... We bring you home.*

