

**LAKE-SUMTER METROPOLITAN PLANNING ORGANIZATION
MEMBERS**

Commissioner Debbie Stivender, Chairman
Lake County Board of County Commissioners

Commissioner Ben Perry, Vice-Chairman
City of Leesburg

Commissioner Jennifer Hill
Lake County Board of County Commissioners

Commissioner Robert Pool
Lake County Board of County Commissioners

Commissioner Catherine Hanson
Lake County Board of County Commissioners

Commissioner Welton Cadwell
Lake County Board of County Commissioners

Commissioner Jim Roberts
Sumter County Board of County Commissioners

Councilmember Frank Caputo
City of Clermont

Vice Mayor/Commissioner Frank Royce
City of Eustis

Councilmember Ty Miller
Town of Lady Lake

Mayor Randall Moye, Jr.
City of Minneola

Mayor James Yatsuk
City of Mount Dora

Vice Mayor Ted Wicks
City of Tavares

MPO Member
City of Astatula

Councilmember Sharon Kelly
City of Fruitland Park

Councilmember Jim Korp
City of Groveland

Mayor Pro Tempore Kenneth Green
Town of Howey-in-the-Hills

Mayor Stanley Sloan
City of Mascotte

MPO Member
City of Montverde

TABLE OF CONTENTS

INTRODUCTION	2
PROJECT SELECTION PROCESS	3
PRIORITY SELECTION PROCESS	3
AMENDMENTS TO THE TIP	4
2004/05-2008/09 WORK PROGRAM	
1) State Roads data sheet	5
State Road Projects Map	
2) Local Roads data sheet	11
3) Bike Paths, Trails & Sidewalks data sheet	12
Local Roads, Bike Facilities & Sidewalks Project Map	
4) Bridges, Signals & Drainage data sheet	16
Bridges & Signals Project Map	
5) Transit/TD Commission data sheet	18
6) Airports data sheet	19
Airport Projects Map	
7) Miscellaneous Maintenance data sheet	21
ABBREVIATIONS AND ACRONYMS	22

INCLUDED FOR INFORMATION PURPOSES ONLY

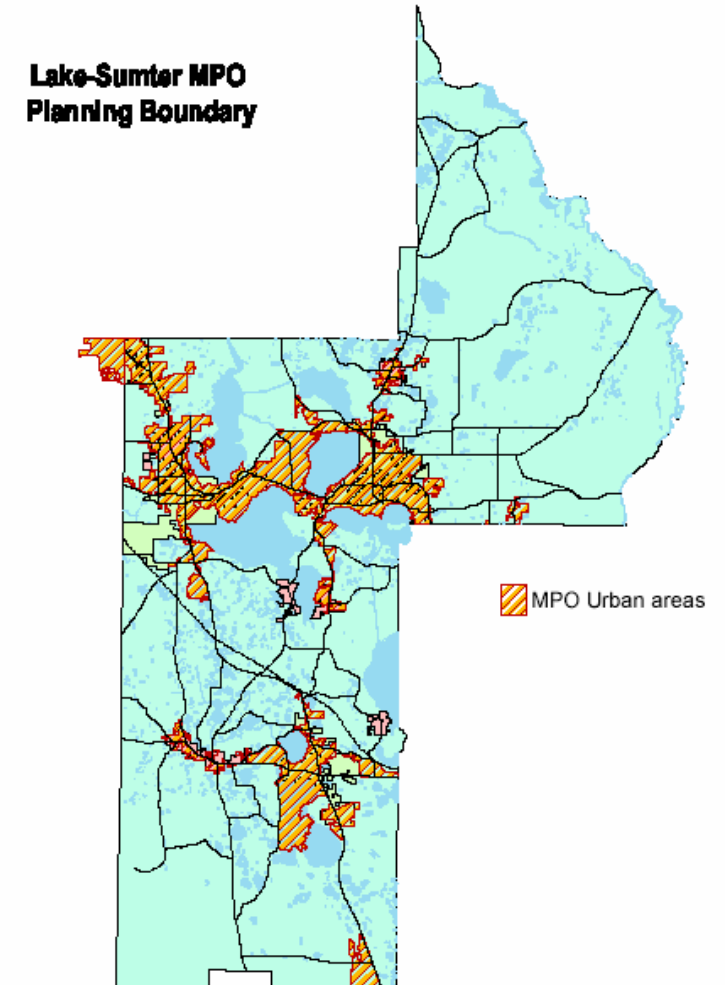
LAKE COUNTY TRANSPORTATION CONSTRUCTION PROGRAM 2004-2008

INTRODUCTION

To carry out the transportation planning process required of the Lake-Sumter Metropolitan Planning Organization, a transportation improvement program (TIP) must be developed for the designated boundary of the Metropolitan Planning Organization (MPO). The designated boundary is shown in the map on this page. In accordance with Title 23 United States Code, the TIP shall:

- Include a priority list of projects to be carried out in the first three years (expanded to 5 years by FDOT);
- Be financially constrained by year and include a financial plan that demonstrates which projects can be implemented using current revenue sources;
- Include all transportation projects proposed for funding under Title 23, U.S.C. including pedestrian walkways, bicycle facilities and transportation enhancement projects; and
- For monitoring progress, identify the criteria and process for prioritizing implementation of transportation plan elements, including intermodal tradeoffs.

The TIP may be modified at any time consistent with procedures established in Title 23 for its development and approval. After approval by the MPO and the Governor, the TIP shall be included without modification into the State TIP (STIP). The first year of the TIP shall constitute an “agreed to” list of projects for project selection purposes from which the implementing agency may proceed with projects.



PROJECT SELECTION PROCESS

The 2004/05-2008/09 Transportation Improvement Program (TIP) is based on the 2020 Long Range Transportation Plan (LRTP) for Lake County and the annual Project Priority Lists developed by Lake and Sumter Counties and submitted to the Florida Department of Transportation (FDOT) for developing its tentative 5-year work program. For information purposes, the Lake County Public Works 5-year Transportation Construction Program is included in a separate section. The Lake-Sumter Metropolitan Planning Organization (LSMPO) will be responsible for updating the 2020 Long Range Transportation Plan to the year 2025. Once the 2025 Plan is adopted, future TIP's will be developed from the 2025 Plan, local government comprehensive plans and other projects identified in accordance with the standard project selection process outlined below. When a project within the MPO planning area has been identified as a potential project, the MPO requests that FDOT and the Federal Highway Administration (FHWA) actively pursue appropriate funding.

The FDOT shall give priority to those projects that are:

1. Designed to maximize safe and efficient travel;
2. Identified in approved local government comprehensive plans to receive local matching funds in accordance with the provisions of Section 335.20, F.S. or to be funded pursuant to the provisions of Section 339.12, F.S.;
3. Within transportation corridors protected by local government action;
4. Used in the operation of, or in conjunction with, public transportation facilities; and
5. Located within the boundaries of a local government which has made a responsible effort to fund improvements needed to accommodate local traffic.

PRIORITY SELECTION PROCESS

The Transportation Improvement Program is derived from the existing 2020 Long-Range Transportation Plan. The MPO will update this Plan to a year 2025 Long Range Transportation Plan using the priority process described here. The LRTP will have two components, the *Needs Plan* and the *Cost Feasible Plan*. The Needs Plan will identify deficient roadway corridors based upon population, employment and land use projections. The Cost Feasible Plan will prioritize these deficient corridors into four categories based upon a proposed improvement's overall benefit to the highway network as well as available revenues. The Cost Feasible Plan will list the critical road projects that are financially feasible into generalized recommended priorities and eliminate any project that is socially, economically or environmentally undesirable.

MPO staff will evaluate all eligible priority projects based on FDOT and MPO policies. This evaluation will include an objective and technical review of each priority based on a road's level-of-service, physical condition, facility type, benefit to the highway network, construction cost and scheduled work program phase. In addition to the process above, the MPO's advisory committees will consider the following factors in the final determination:

- 1) The project supports the economic vitality of the metropolitan area, especially by enabling global competitiveness, productivity and efficiency;
- 2) Increases the safety and security of the transportation system for motorized and non-motorized users;
- 3) Increases the accessibility and mobility options available to people and freight;
- 4) Protects and enhances the environment, promotes energy conservation and improves the quality of life;
- 5) Enhances the integration and connectivity of the transportation system, across and between modes, for people and freight;
- 6) Promotes efficient system management and operation; and
- 7) Emphasizes the preservation of the existing transportation system.

After the Citizens Advisory Committee and the Technical Advisory Committee prepare their priority recommendations, the MPO Board will review the recommendations for the final MPO adopted Federal and State Priorities. This MPO recommended priority list will then be transmitted to FDOT for the development of the next FDOT Tentative Work Program for Lake and Sumter Counties.

AMENDMENTS TO THE TIP

The MPO may unilaterally add, remove or reschedule any locally funded TIP project that is not a level of service requirement. For all other projects, the federally approved TIP can be modified at any time when there is a joint agreement between the MPO and the FDOT. Modification of a current TIP may also require amendment to the FDOT's Adopted Work Program based on projects that require mid-year rescheduling.

Upon MPO endorsement of the TIP modification, a copy of the modification is sent to the FDOT district office and the Florida Department of Community Affairs (DCA) for consistency review purposes. Therefore, the MPO may not remove or reschedule any local City, County or City/County funded level of service project from a current TIP to a subsequent TIP without an amendment. Action by the FDOT District Secretary is required for all joint TIP amendments that involve projects in the Department's Adopted Work Program that are to be advanced, deleted or rescheduled pursuant to the following provisions of Section 339.135 (7) paragraph c, F.S.:

- a) Any amendment that deletes any project or project phase;
- b) Any amendment that adds a project estimated to cost over \$150,000;
- c) Any amendment that advances or defers to another fiscal year, a right-of-way phase, a construction phase or a public transportation project phase estimated to cost over \$500,000, except an amendment advancing or deferring a phase for a period of 90 days or less; or
- d) Any amendment that advances or defers to another fiscal year, any preliminary engineering phase or design phase estimated to cost over \$150,000, except an amendment advancing or deferring a phase for a period of 90 days or less.

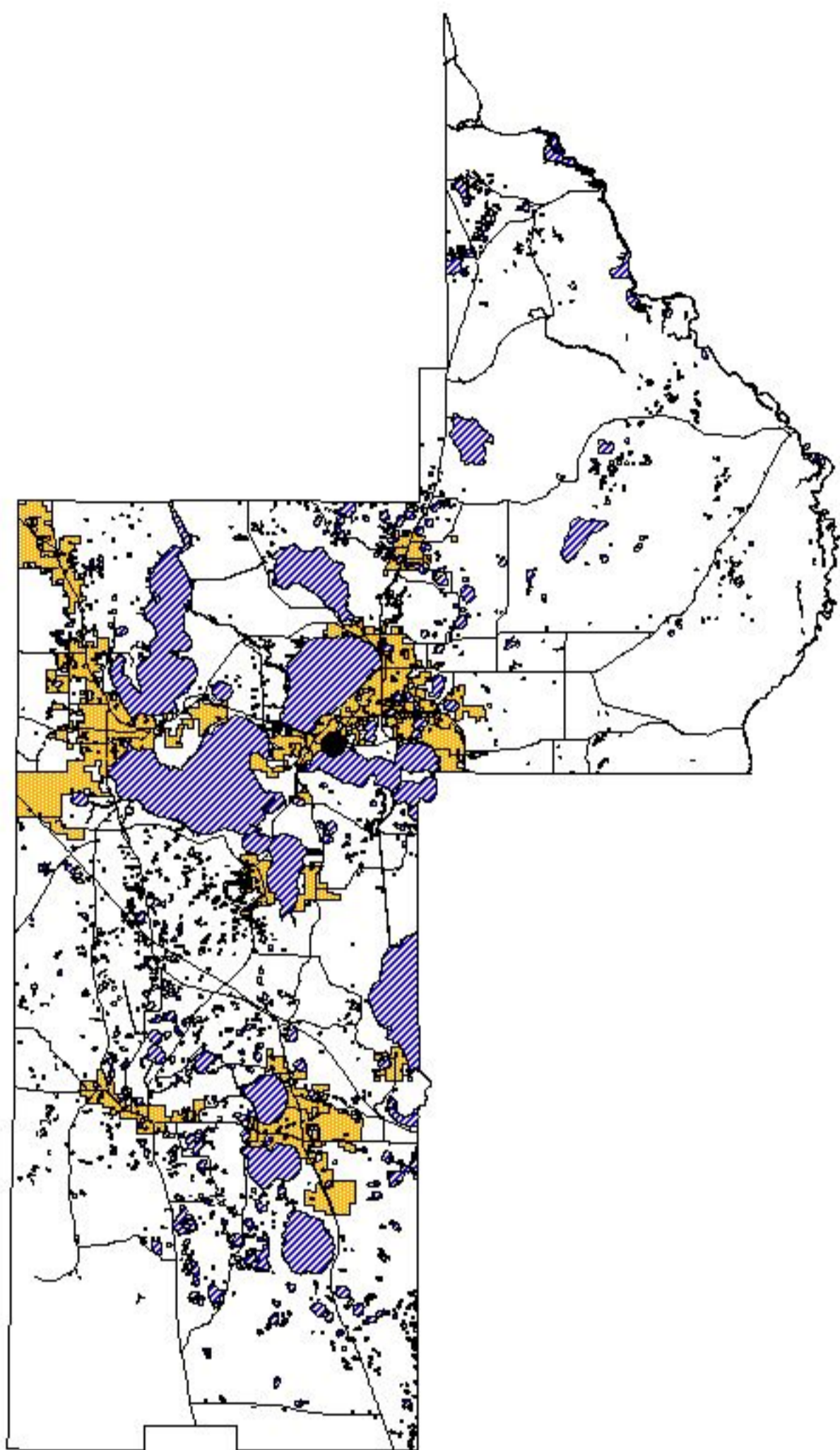
TRANSPORTATION IMPROVEMENT PROGRAM

STATE ROADS																		
County	Project Number	Project Segments	Work Description	2004 /2005			2005 /2006			2006 /2007			2007 /2008			2008 /2009		
				Amount 000's	Phase	Fund Code	Amount 000's	Phase	Fund Code	Amount 000's	Phase	Fund Code	Amount 000's	Phase	Fund Code	Amount 000's	Phase	Fund Code
LAKE-SUMTER MPO																		
Lake and Sumter Co.	4166701	LAKE & SUMTER URBAN AREA	MPO PLANNING FUNDS	339	PL	GRANT												
Lake and Sumter Co.	4163671	SECTION 5303	PTO STUDIES	6	PLN	DS												
				43	PLN	DU												
				6	PLN	LF												
SR 40																		
Lake	4106751	FROM MARION CO LINE TO VOLUSIA CO LINE	PD&E/EMO STUDY	100	PDE	DIH	800	PDE	DS									
Lake	4116131	FROM MARION CO LINE TO 195' W OF RIVER RD	RESURFACING	2808	CST	XA												
SR 44 / CR 44B																		
Lake	4098701	FROM SR 500 US 441 TO SR 44	ADD LANES & RECONSTRUCT							2500	PE	DDR						
										25	PE	DIH						
SR 46																		
Lake	2382751	SR 500 US 441 SEMINOLE CO LINE	PD&E/EMO STUDY	100	PDE	DIH	3000	PDE	DS									
Lake	4135751	FROM CHURCH ST. TO 500'E OF CR 46@PAVEMNT	RESURFACING	162	CST	DIH												
				3127	CST	DS												
SR 50																		
Lake	2384293	FROM W OF BLOXHAM BLVD TO W OF HANCOCK RD	ADD LANES & RECONSTRUCT	3700	PE	DDR										398	ROW	DIH
				20	PE	DIH										2567	ROW	DS
Lake	2384294	HANCOCK RD ORANGE CO LINE	ADD LANES & RECONSTRUCT	45	ENV	DS				105	ROW	DDR	161	ROW	DDR			
										56	ROW	DIH						
Lake		TURNPIKE TO LAKE CO LINE	ADD LANES & RECONSTRUCT	640	ROW	GRANT												
SR 19																		
Lake	4119811	GROVE ST GOLDEN GEM DRIVE	RESURFACING	225	CST	DIH												
				1921	CST	DS												
Lake	4155161	SR 19/48 TO LK HARRIS BRG	RESURFACING				486	CST	SN									
SR 25/US 27																		
Lake	2384211	FR N SR 530/POLK CO LINE TO N OF BOGGY MARSH RD	ADD LANES & RECONSTRUCT				1500	CST	LF				750	CST	NHAC			
							17763	CST	NHAC									
Lake	2384221	FROM BOGGY MARSH ROAD TO LAKE LOUISA ROAD	ADD LANES & RECONSTRUCT	899	ENV	NHAC	997	ROW	BNIR	7901	ROW	BNIR						
							283	ROW	DI									
Lake	2384231	FROM 1000' N LK LOUISA RD TO W BND RAM ON SR 50	ADD LANES & REHABILITATE PVMNT	105	ENV	NHAC	2117	ROW	BNIR	16572	ROW	BNIR						
							316	ROW	DI									
Lake	2384241	FROM W BND RAMP @ SR 50 TO CR 561-A	ADD LANES & RECONSTRUCT				2000	CST	LF				750	CST	NHAC			
							17352	CST	NHAC									
Lake	4116031	FROM SUNSHINE AVENUE TO SR 500	RESURFACING	8177	CST	XL												
Lake	4150001	SOUTHBOUND AT CORLEY ISLAND RD	ADD LEFT TURN LANE				17	CST	DIH									
							107	CST	DS									

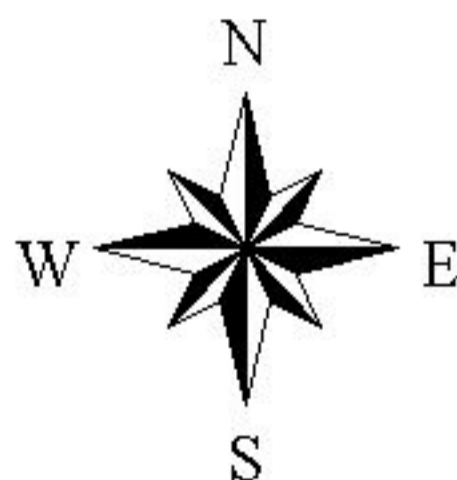
TRANSPORTATION IMPROVEMENT PROGRAM

STATE ROADS, CONT'D																		
County	Project Number	Project Segments	Work Description	2004 /2005			2005 /2006			2006 /2007			2007 /2008			2008 /2009		
				Amount 000's	Phase	Fund Code	Amount 000's	Phase	Fund Code	Amount 000's	Phase	Fund Code	Amount 000's	Phase	Fund Code	Amount 000's	Phase	Fund Code
SR 500/US 441																		
Lake	2383943	PERKINS ST SR 44	ADD LANES & RECONSTRUCT							2000	PE	DDR				1697	ROW	
										5	PE	DIH				278	ROW	
Lake	2383944	N.OF GRIFFIN RD TO MARTIN LUTHER KING BLV	CORRIDOR IMPROVEMENT							1200	PE	DDR				210	ROW	DIH
Lake	2383141	FROM LAKE EUSTIS DR TO CR 44B	ADD LANES & RECONSTRUCT	26580	CST	DDR				1500	CST	DDR				2007	ROW	DS
				23	CST	DIH												
				2549	CST	DS												
				4000	CST	LF												
Lake	2383151	FROM MILLS STREET TO W OF COLLEGE ROAD	ADD LANES & RECONSTRUCT				750	CST	DDR									
Lake	2383954	FROM MLK TO LAKE ELLA RD	ADD LANES & RECONSTRUCT	50	PE	DIH	3500	PE	XA	70	ENV	ACXA	3442	ROW	DDR			
										368	ROW	DDR						
										56	ROW	DIH						
Lake	2383955	FROM LAKE ELLA RD TO AVENIDA CENTRAL	ADD LANES & RECONSTRUCT	50	PE	DIH	4500	PE	ACXA	91	ENV	ACXA	6880	ROW	DDR			
										738	ROW	DDR						
										145	ROW	DIH						
Lake	2384123	FROM W/ CR473/BLUEGILL TO E/ OF CR 473/BLUEGILL	MISCELLANEOUS STRUCTURE	30	CST	DIH												
				1200	CST	DS												
				10	PE	DS												
Lake	2384124	FROM .21 MI W/COLLEGE RD TO.2 MI W/LAKESHORE BLVD	LANDSCAPING	250	CST	DS												
Lake	2383942	PERKINS STREET N. OF GRIFFIN RD	INTERSECTION (MAJOR)				146	ROW	DIH	8261	ROW	XA				7417	CST	XA
							1226	ROW	XA									
Sumter	2383957	FROM BUENOS AIRES TO MARION CO LINE	ADD LANES & RECONSTRUCT													5	PE	DIH
																500	PE	XL
SR 91/TURNPIKE																		
Lake	4042143	CR 470 INTERCHANGE (MAJOR)	THERMOPLASTIC	75	CST	PKYR												
Lake	4161911		ADD 4 LANES	6950	CST	PKBD												
		LEESBURG TOLL PLAZA		2	CST	PKYI												
Lake	4136235		GUARDRAIL IMPROVEMENTS	5889	CST	PKYI												
		LAKE COUNTY MEDIANS																
Lake	4136232	RESURFACING MP 275.7 TO 281.8 SOUTHBOUND ONLY	RESURFACING	11	CST	PKYI												
				5590	CST	PKYR												
Lake	4136233	RESURFACING MP 275.7 TO 281.8 - THERMOPLASTIC	RESURFACING				11	CST	PKYI									
							705	CST	PKYR									
Lake	4136234	ROADSIDE IMPROVEMENTS & GUARDRAIL UPGRADES	GUARDRAIL	3772	CST	PKYI												
				26	CST	PKYR												

STATE ROAD PROJECTS LAKE & SUMTER COUNTIES

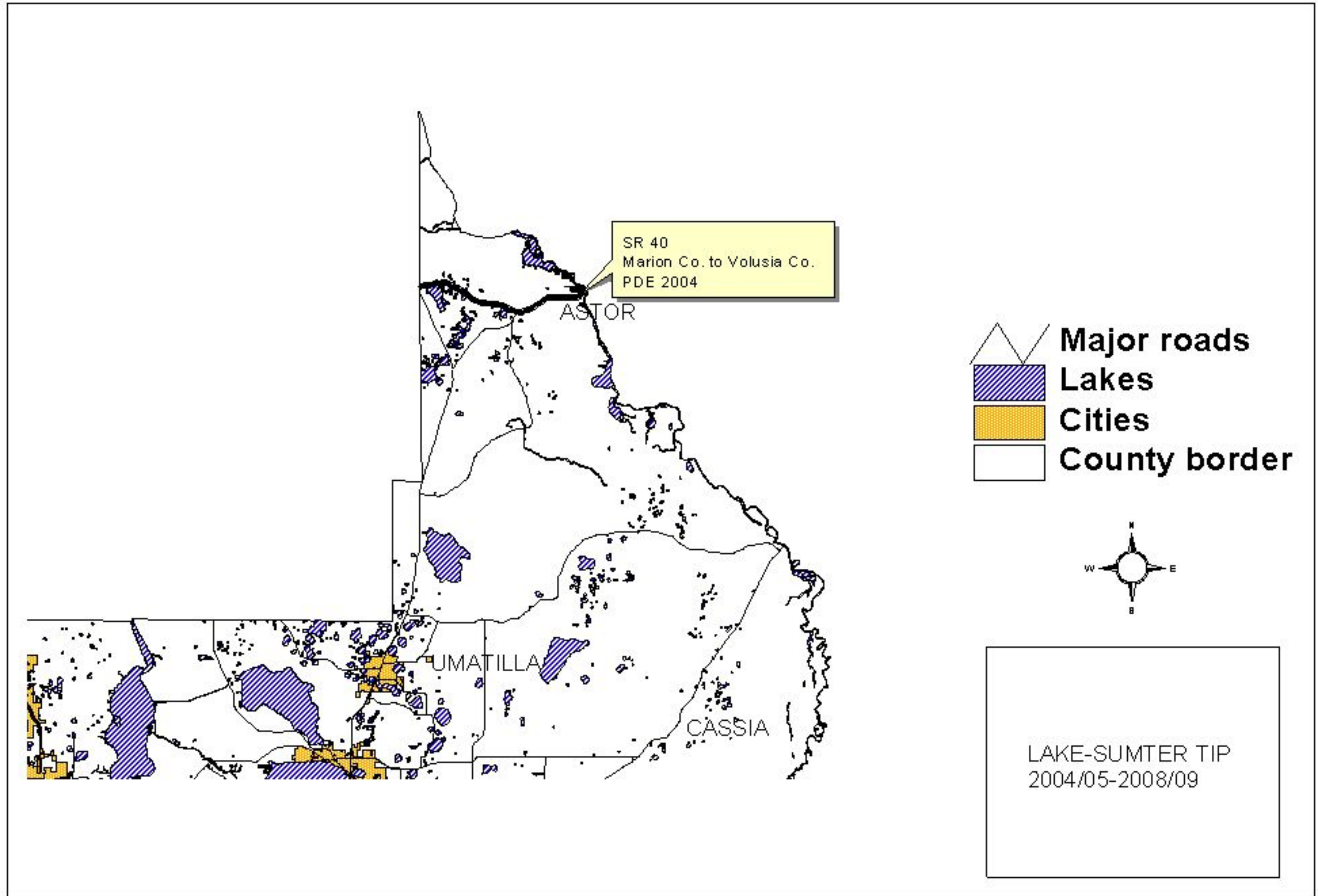


-  Major roads
-  Lakes
-  Cities
-  County border

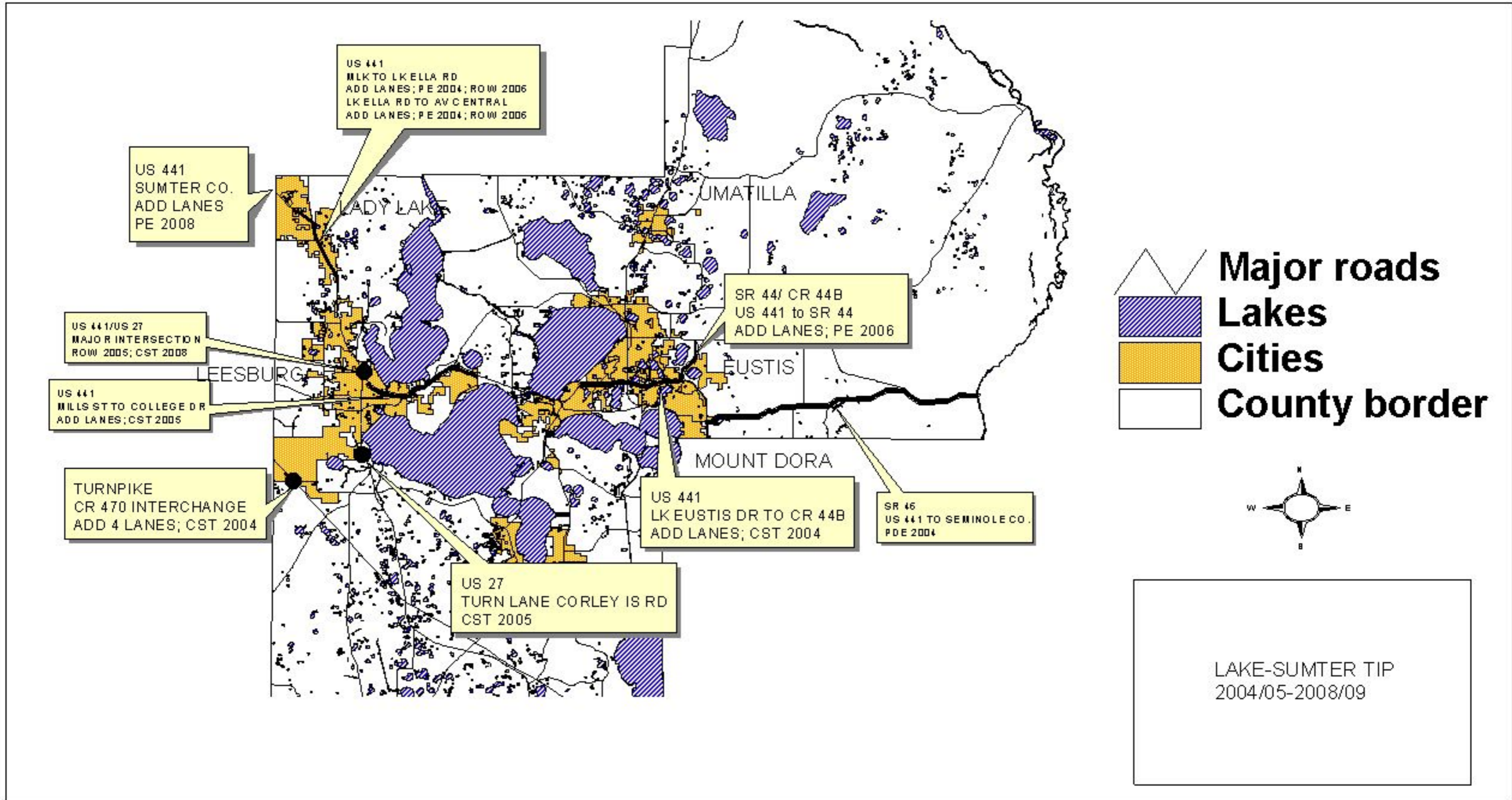


LAKE-SUMTER TIP 2004/05-2008/09

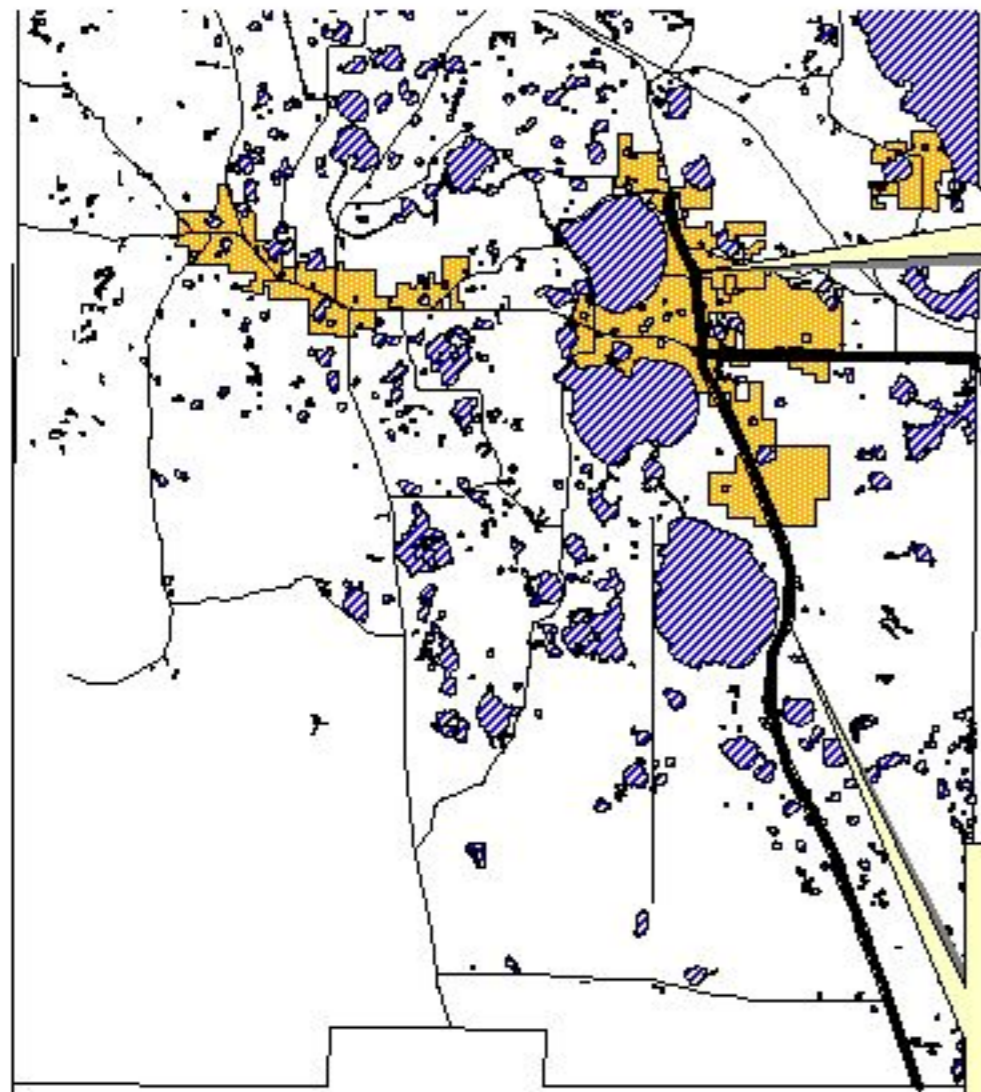
STATE ROAD PROJECTS NORTH LAKE COUNTY



STATE ROAD PROJECTS MID LAKE & SUMTER COUNTIES



STATE ROAD PROJECTS SOUTH LAKE COUNTY



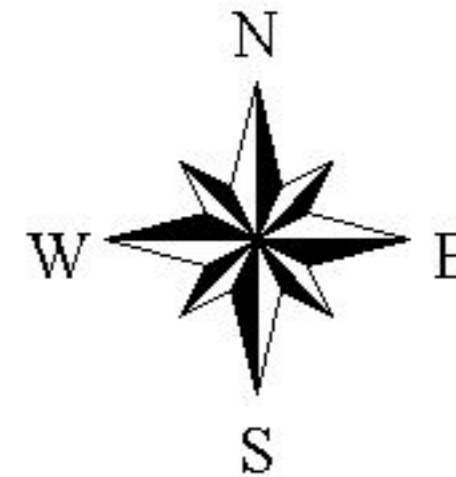
US 27
SR 50 TO CR 561A
ADD LANES; CST 2005

SR 50
BLOXHAM TO HANCOCK
ADD LANES; PE 2004; ROW 2008
HANCOCK TO ORANGE CO.
ADD LANES; ENV 2004; ROW 2006

US 27
BOGGY MARSH TO LAKE LOUISA RD
ADD LANES; ENV 2004; ROW 2005
LAKE LOUISA RD TO SR 50
ADD LANES; ENV 2004; ROW 2005

US 27
BOGGY MARSH TO POLK CO.
ADD LANES; CST 2005

-  Major roads
-  Lakes
-  Cities
-  County border



LAKE-SUMTER TIP 2004/05-2008/09

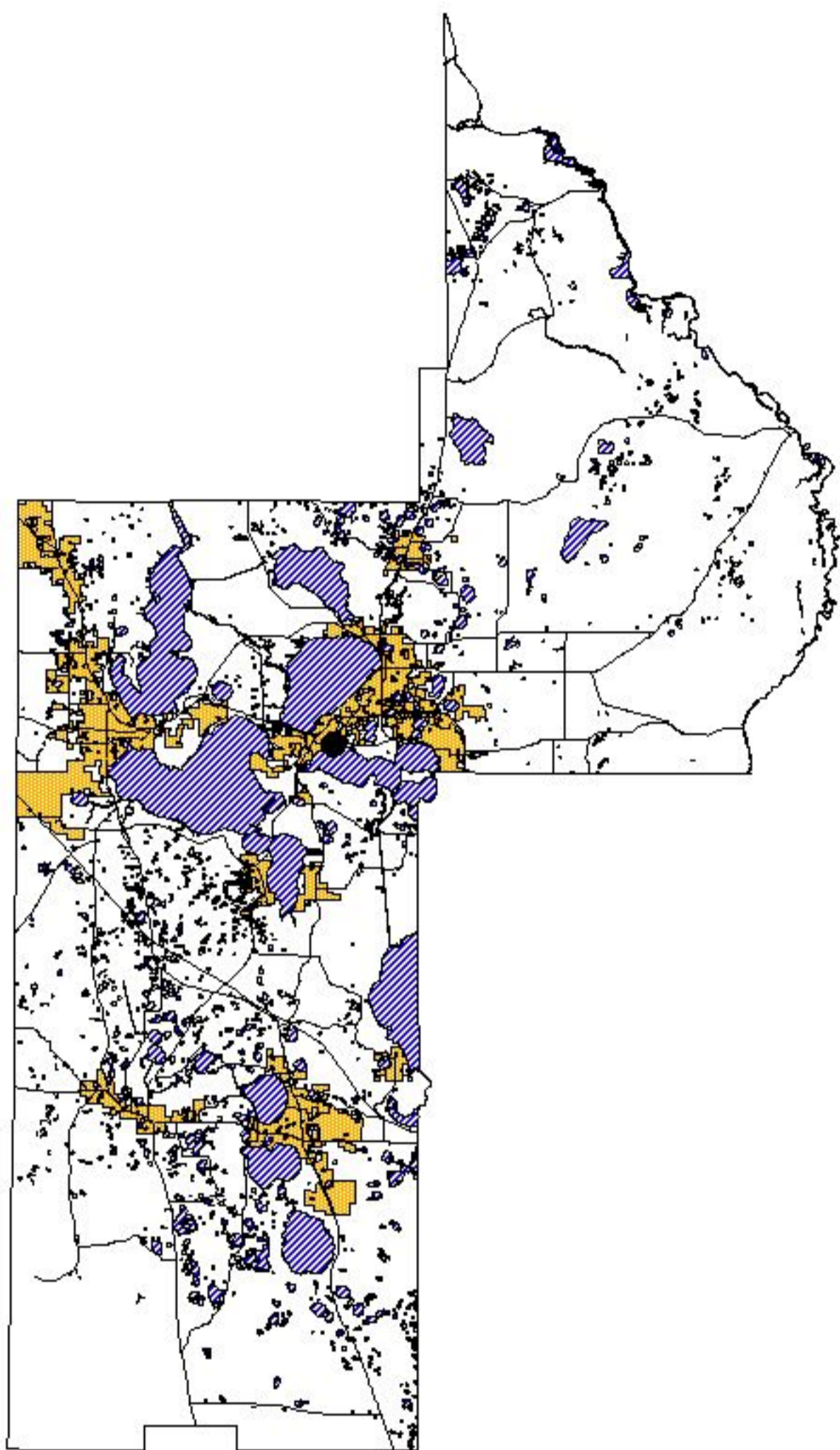
TRANSPORTATION IMPROVEMENT PROGRAM

				LOCAL ROADS														
County	Project Number	Project Segments	Work Description	2004 /2005			2005 /2006			2006 /2007			2007 /2008			2008 /2009		
				Amount 000's	Phase	Fund Code	Amount 000's	Phase	Fund Code	Amount 000's	Phase	Fund Code	Amount 000's	Phase	Fund Code	Amount 000's	Phase	Fund Code
CR 48																		
Lake	4154721	FROM US 27 TO SR 19	PAVE SHOULDERS				757	CST	SH									
							84	PE	SH									
LAKESHORE DRIVE																		
Lake	4133121	FROM CR561 TO HOOK STREET	PAVE SHOULDERS	911	CST	SS												
LAKE COUNTY																		
Lake	2435191		PLANNING MODELS/DATA UPDATE				150	PLN	D									

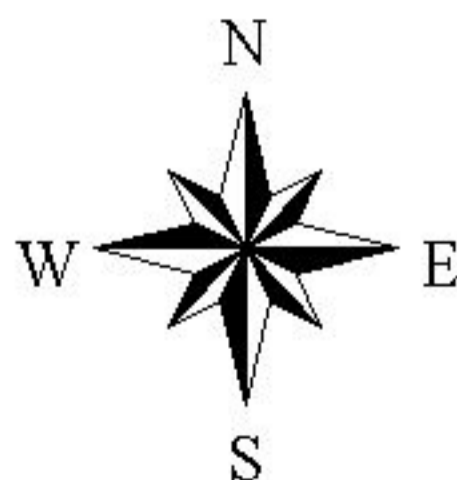
TRANSPORTATION IMPROVEMENT PROGRAM

BIKE PATHS, TRAILS & SIDEWALKS																		
County	Project Number	Project Segments	Work Description	2004 /2005			2005 /2006			2006 /2007			2007 /2008			2008 /2009		
				Amount 000's	Phase	Fund Code	Amount 000's	Phase	Fund Code	Amount 000's	Phase	Fund Code	Amount 000's	Phase	Fund Code	Amount 000's	Phase	Fund Code
CR48 SIDEWALK																		
Lake	4121421	CR561	SIDEWALK	127	ADM	ACSE												
				127	ADM	SE												
FRUITLAND PARK TRAIL																		
Lake	4161111	FROM GRIFFIN RD TO LAKE ELLA RD	BIKE PATH							125	PDE	SE	166	PE	SE			
TAV-LEE TRAIL PH II																		
Lake	4154311	FROM SR500/CANAL STREET TO LAKES BLVD	BIKE PATH							200	PDE	SE	136	PE	SE			
TAV-LEE TRAIL PH III																		
Lake	4154321	FROM EAGLESNEST RD TO LAKE CO/SUMTER CO LINE	BIKE PATH							200	PDE	SE	136	PE	SE			
TAV-LEE TRAILHEAD																		
Lake	4139961	CITY OF TAVARES	MISCELLANEOUS CONSTRUCTION							61	CST	SE						
TRAILS MASTER PLAN																		
Lake	4139941	LAKE COUNTY TRAILS PLAN	RESEARCH							35	PDE	SE						

STATE ROAD PROJECTS LAKE & SUMTER COUNTIES



-  Major roads
-  Lakes
-  Cities
-  County border



LAKE-SUMTER TIP 2004/05-2008/09

LOCAL ROADS, BIKE FACILITIES & SIDEWALKS MID LAKE COUNTY

