



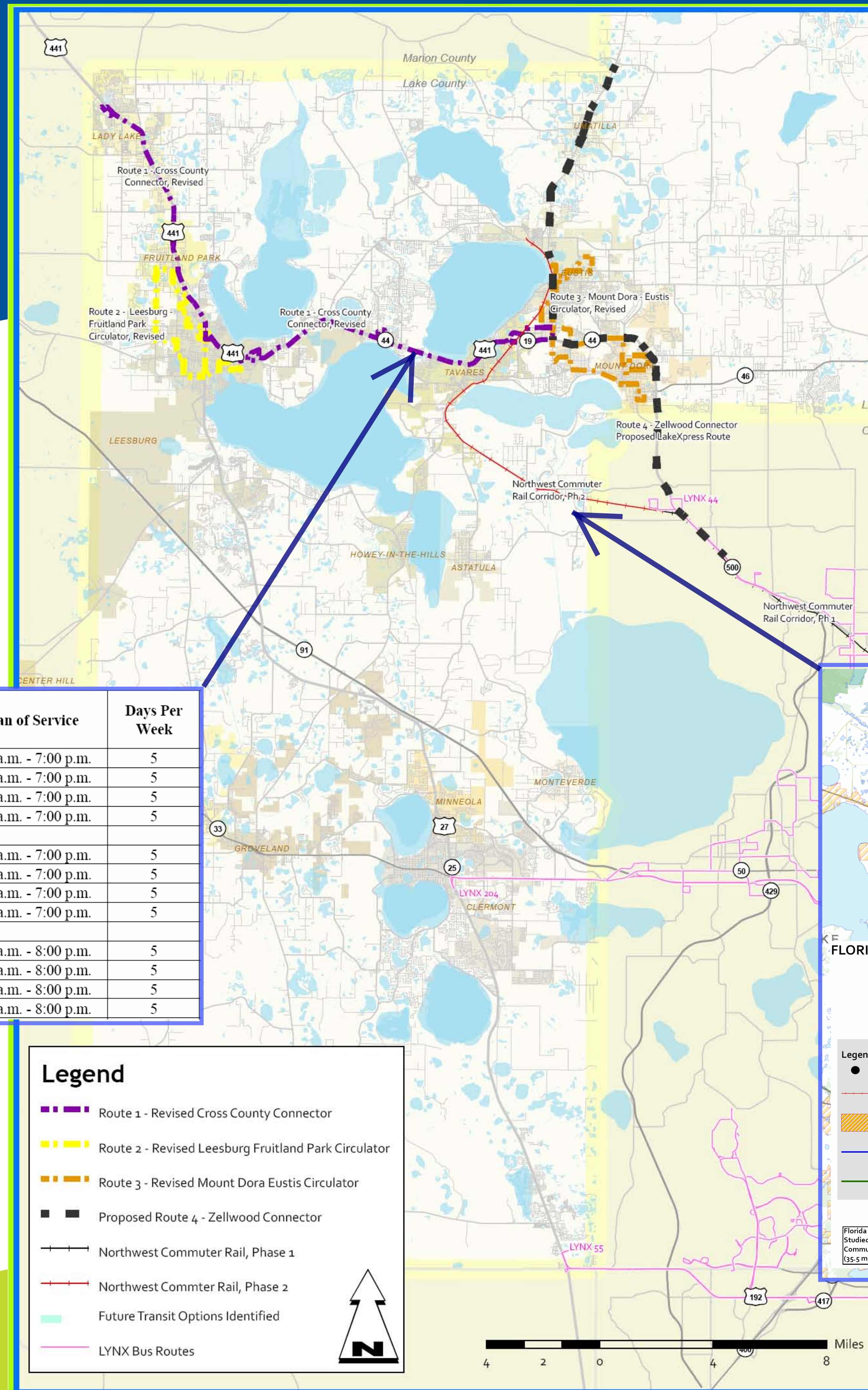
LakeXpress

WilburSmith
ASSOCIATES

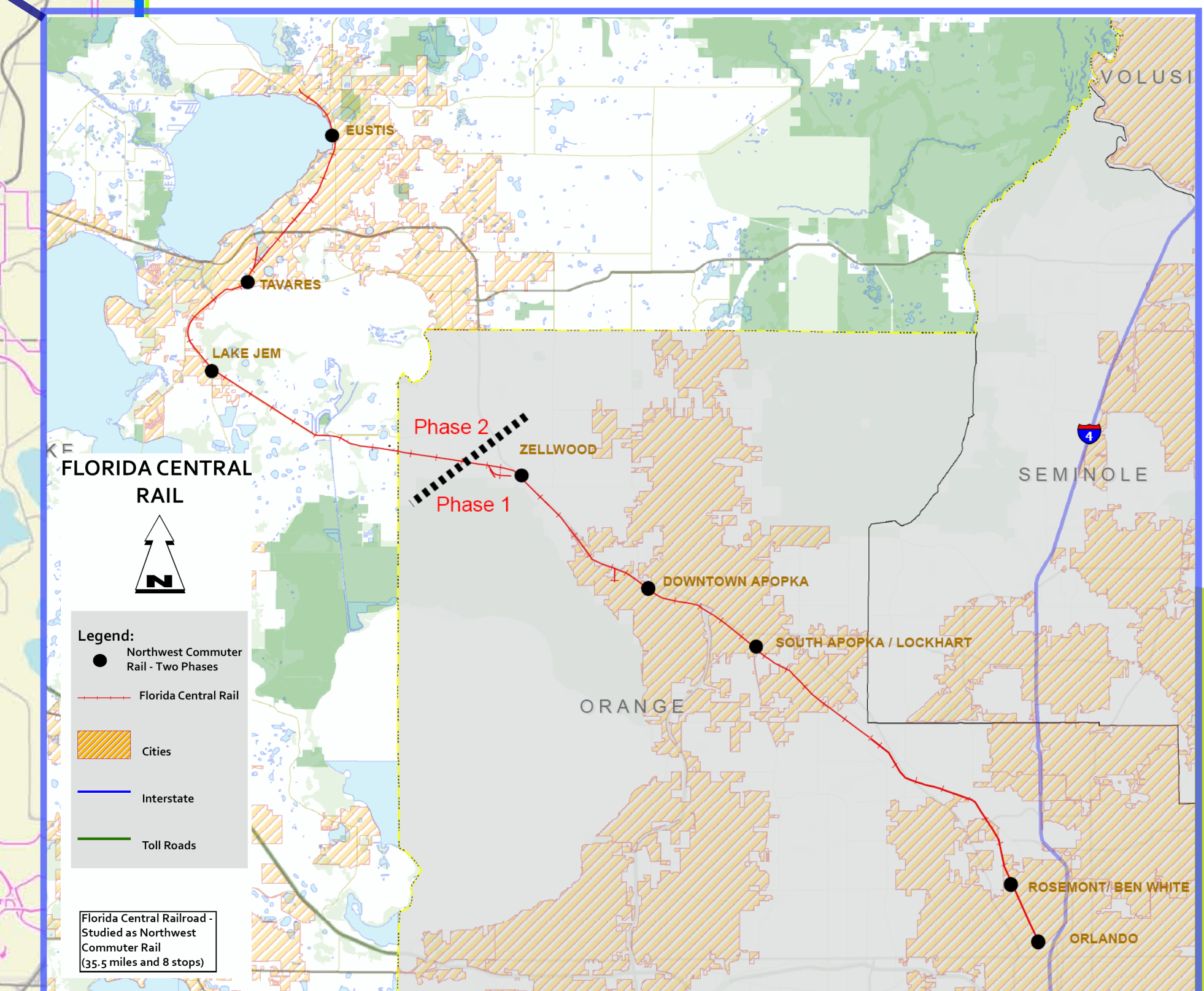
Recommended Future Transit Service

Recommended Service Plan Detail

Alternative	Rt Num	Start Year	Span of Service	Days Per Week
Cross County Connector	1	FY 2007/08	7:00 a.m. - 7:00 p.m.	5
Leesburg Circulator	2	FY 2007/08	7:00 a.m. - 7:00 p.m.	5
Mount Dora Circulator	3	FY 2008/09	7:00 a.m. - 7:00 p.m.	5
Zellwood Connector	4	FY 2009/10	7:00 a.m. - 7:00 p.m.	5
Improve Existing Service - Cut Headways By Doubling the Number of Vehicles				
1a - Cross County Enhancement	1a	FY 2012/13	7:00 a.m. - 7:00 p.m.	5
2a - Leesburg Circulator Enhancement	2a Counterclockwise	FY 2012/13	7:00 a.m. - 7:00 p.m.	5
3a - Mount Dora Circulator Enhancement	3a Counterclockwise	FY 2012/13	7:00 a.m. - 7:00 p.m.	5
4a - Zellwood Connector Enhancement	4a	FY 2012/13	7:00 a.m. - 7:00 p.m.	5
Enhance Existing Routes - Add 2 Hours (6:00 am to 8:00 pm)				
1b - Cross County Early/Late	1b	FY 2012/13	6:00 a.m. - 8:00 p.m.	5
2b - Leesburg Circulator Early/Late	2b	FY 2012/13	6:00 a.m. - 8:00 p.m.	5
3b - Mount Dora Circulator Early/Late	3b	FY 2012/13	6:00 a.m. - 8:00 p.m.	5
4b - Zellwood Connector Early/Late	4b	FY 2012/13	6:00 a.m. - 8:00 p.m.	5



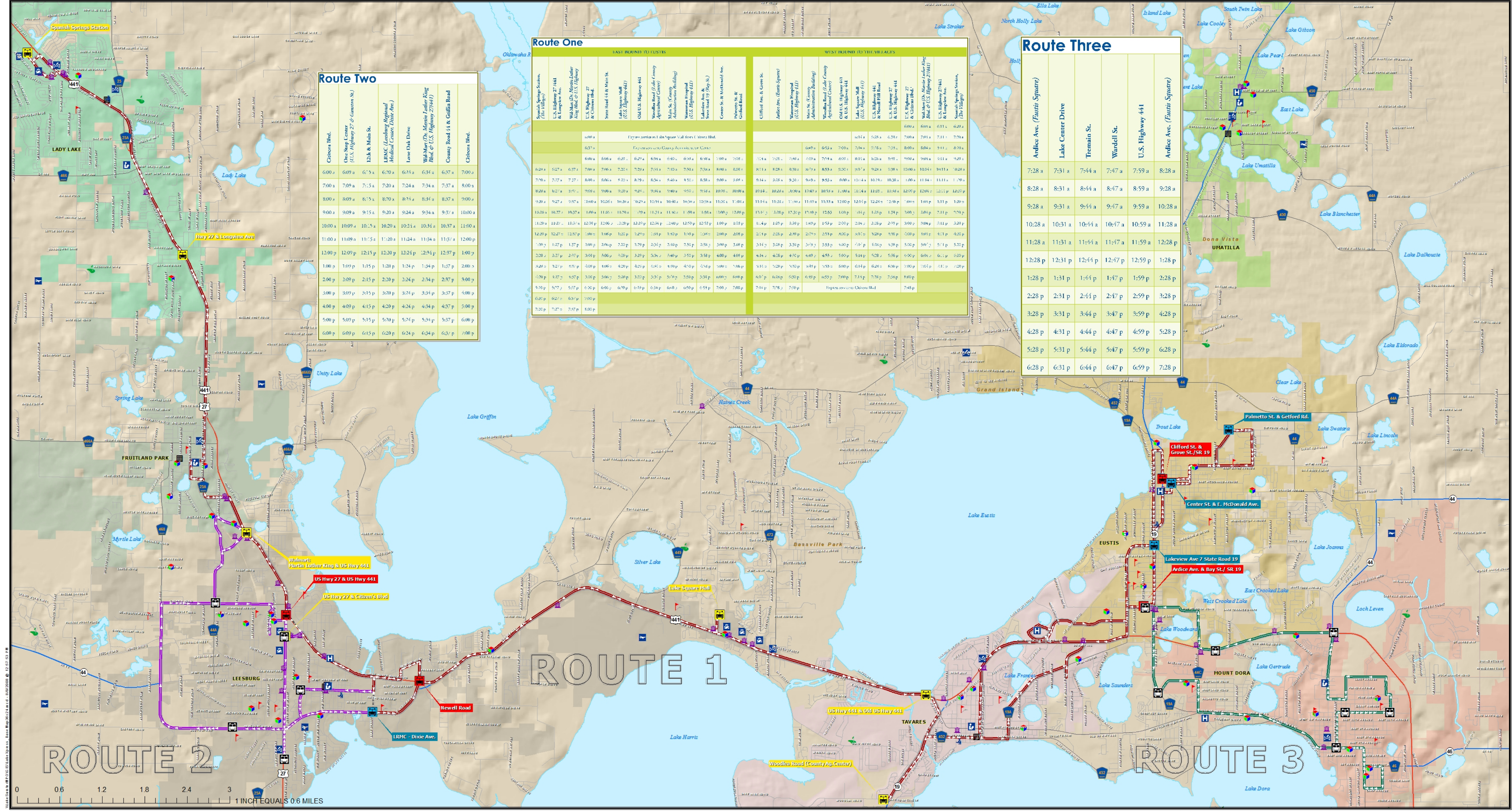
Northwest Commuter Rail Study and Implement



For additional information, please visit the Lake-Sumter Metropolitan Planning Organization at <http://www.lakesumtermo.com>. You may also contact Mike Woods at 352-315-0170 x251 or via E-mail at MWoods@LakeSumterMPO.com.

2020 Transit Development Plan

ROUTE MAP



LEGEND

- Circulator Stop
- East/West Bound
- East Bound Only
- West Bound Only
- Route Overlap
- Route 1
- Route 2
- Route 3
- County Road
- State Road
- US Highway
- Turnpike
- Bank
- Child Care
- Golf
- Post Office
- Shopping Center
- Educational Institution
- Hospital
- Airport
- City Hall
- County Facility
- Library
- Police
- MUNICIPAL AREA
- LADY LAKE
- FRUITLAND PARK
- LEESBURG
- TAVARES
- MOUNT DORA
- EUSTIS
- UMATILLA

HOURS OF OPERATION:
 Lakesumter Express Monday through Friday 6 a.m. to 6 p.m. Buses do not run on Saturdays, Sunday and the following listed holidays:
 *New Year's Day *Labor Day
 *Martin Luther King Day *Thanksgiving Day
 *Memorial Day *Independence Day
 *Veterans Day
 For more information regarding routes, scheduling and bus times, call Lakesumter at (352)328-8687.

DATA SOURCES:
 Lakesumter Express, Planning Division, Lake County Department of Community Services, Department of Transportation Planning Organization.
 This map product was prepared from geographic information system data provided by Lakesumter Express, Planning Organization and Lake County Board of County Commissioners.
 The Department of Community Services, Planning Organization and Lake County Board of County Commissioners are not responsible for errors or omissions, or for any consequences arising from the use of the information contained herein. The user assumes all liability for any use of the information for purposes other than those intended by the Lakesumter Express.
 ** City limits boundaries are subject to change and do not necessarily reflect annotations which have recently occurred.

MAP COMPOSITION:
 AUGUST, 2008

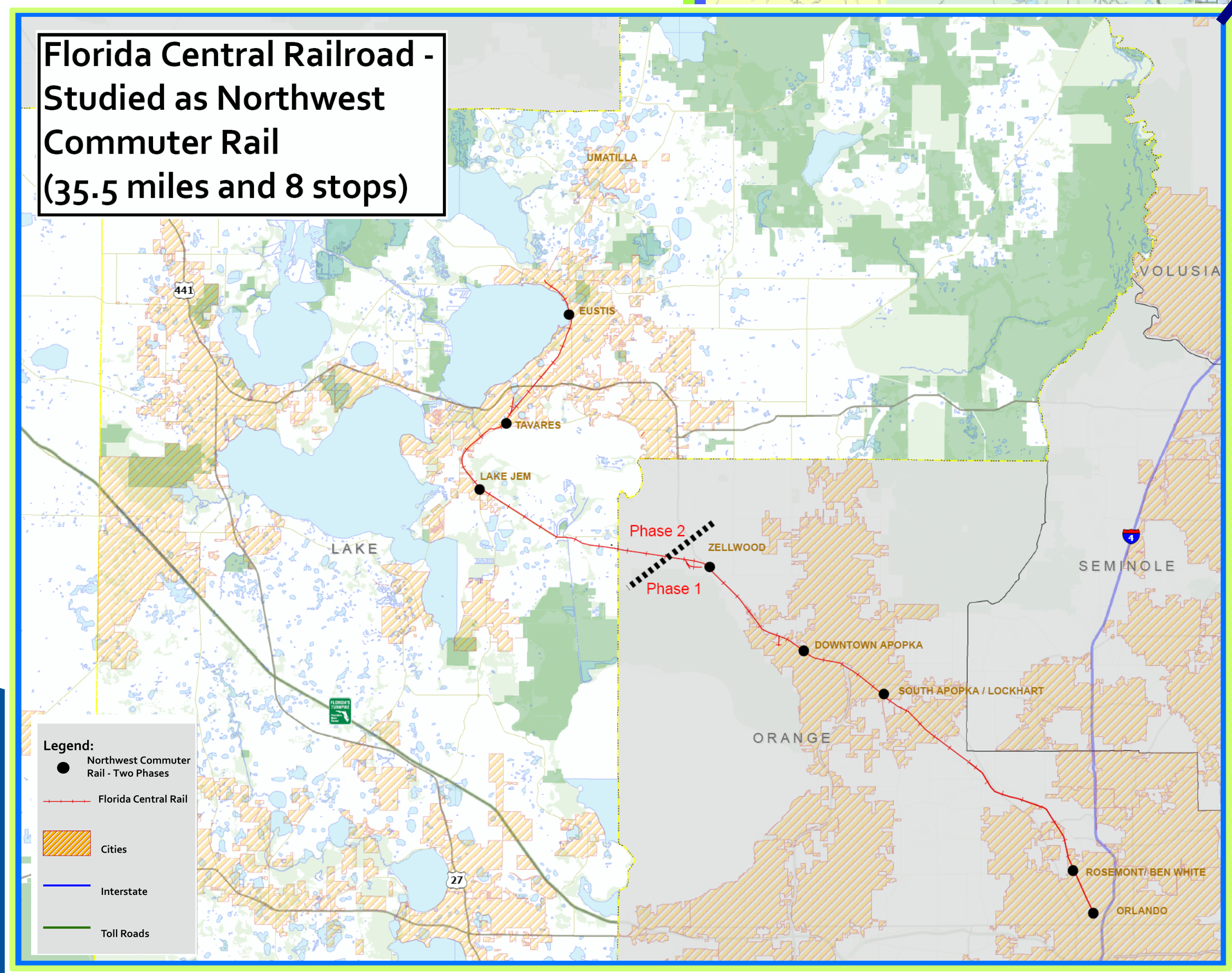
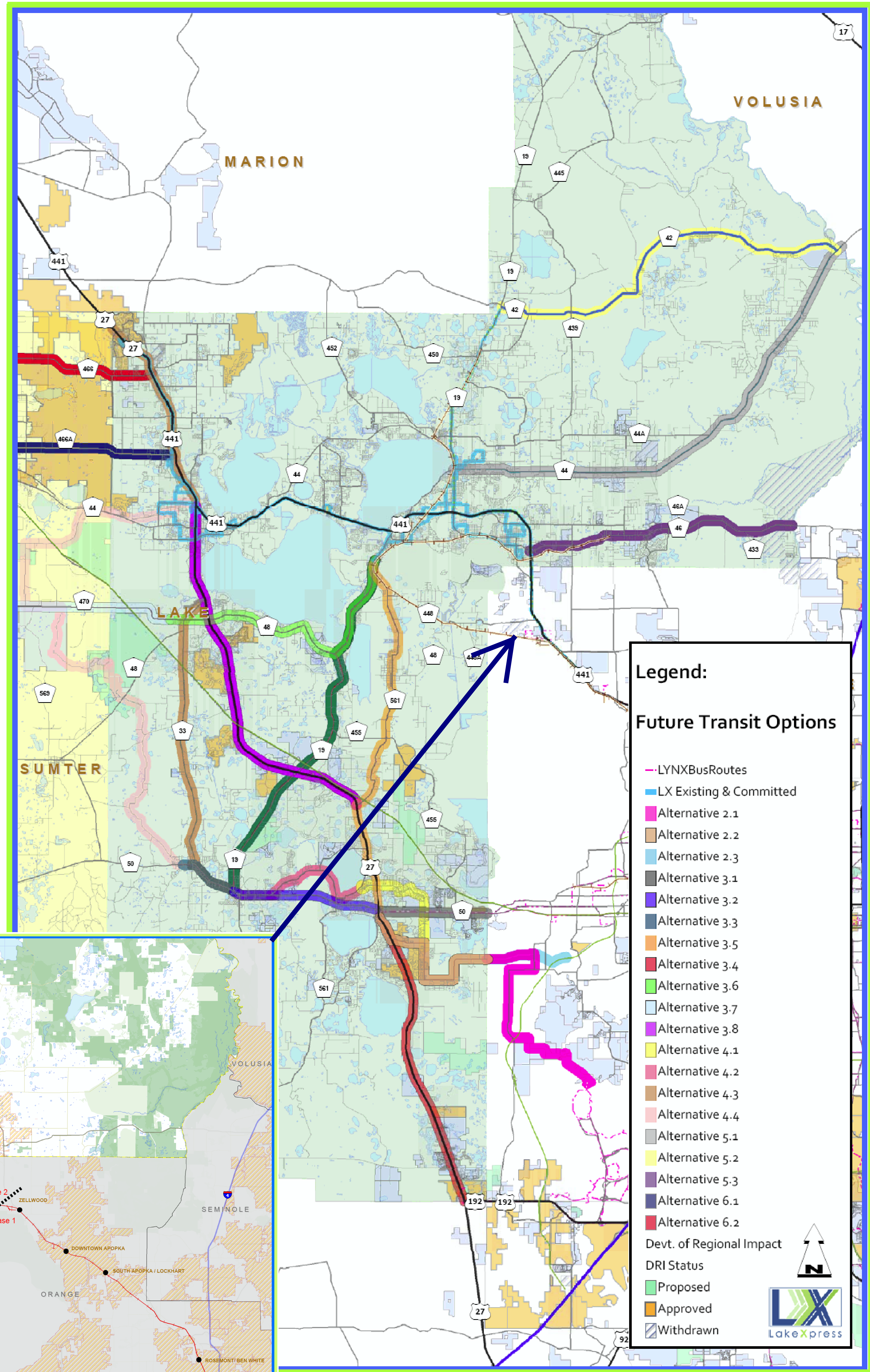
LAKE COUNTY DEPARTMENT OF COMMUNITY SERVICES
 Public Transportation Division

Lake-Sumter MPO
 Metropolitan Planning Organization

For additional information, please visit the Lake-Sumter Metropolitan Planning Organization at <http://www.lakesumtermopo.com>. You may also contact Mike Woods at 352-315-0170 x251 or via E-mail at MWoods@LakeSumterMPO.com.

2020 Transit Development Plan

Identified Future Transit Options



2020 Transit Development Plan

For additional information, please visit the Lake-Sumter Metropolitan Planning Organization at <http://www.lakesumtermpo.com>. You may also contact Mike Woods at 352-315-0170 x251 or via E-mail at MWoods@LakeSumterMPO.com.