

GET TO KNOW YOUR MPO

AN INTRODUCTION TO METROPOLITAN PLANNING ORGANIZATIONS

Presented by the Lake~Sumter Metropolitan Planning Organization



T.J. Fish, AICP
Executive Director
June 1, 2012

- ❑ MPO INTRODUCTION
- ❑ MPO HISTORY
- ❑ MPO COMPONENTS
- ❑ MPO PRODUCTS
- ❑ MPO SERVICES

The screenshot displays the Lake-Sumter MPO website. At the top, there is a search bar and a language selection dropdown. The main header features the MPO logo and the slogan "Promoting Regional Transportation Partnerships" with an image of a cyclist, a car, and a bus. A breadcrumb trail reads "Home > About Lake-Sumter MPO > Mission/Vision".

Lake-Sumter MPO Mission Statement

The mission of the Lake-Sumter Metropolitan Planning Organization is to provide the local governments, agencies and residents of Lake and Sumter counties a forum for addressing growth and transportation issues, with an emphasis on: (1) planning a regional, multi-modal transportation network that balances accessibility and mobility; (2) incorporating the visions of the member governments into a cohesive regional approach; and (3) coordinating with regional partners and state and federal agencies to meet the needs of the public.

Navigation Menu:

- Home
- About Lake-Sumter MPO
- Mission/Vision
- MPO Policies
- History of MPOs
- FAQ
- Organizational Chart
- Glossary of Terms
- Contact MPO
- Links
- Calendar of Events
- MPO Board & Committees
- Maps
- News Releases
- Newsletter
- TRANSPORTATION 2035
- Planning Documents
- Public Notices
- Regional Initiatives
- Technical Resources
- Roadway Projects
- Search
- Transit
- Transportation Concurrency
- Transportation Studies/ETDM
- Workshops & Forums

Join Our Mailing List
 or unsubscribe

Visit Us on Facebook
Follow us on Twitter

Like 14 likes. Sign Up to see what your friends

You Tube
 Lake-Sumter MPO
 LakeSumterMPO Channel **Subscribe**

ETDM Project Diary

Lake

om

- Metropolitan Planning Organization (MPO)
 - A regional agency tasked with efficiently planning for the community's transportation needs
 - Provides a forum for the local governments, agencies, and residents to address growth and transportation issues
 - Carries out the metropolitan transportation planning process while coordinating with local, state, and federal plans and programs

facebook

Search



Michael Woods

Find Friends

Home



Create a Page



Wall

Info

Friend Activity (1+)

Photos

About

Lake~Sumter Metropolitan
 Planning Organization

15

like this

Likes



Friends of the
 Florida Black Bear
 Scenic Byway

Create a Page

Add to My Page's Favorites

Get Updates via SMS

Get Updates via RSS

Unlike

Report Page

Lake~Sumter MPO

Government Organization · Leesburg, Florida



Wall



Lake~Sumter MPO

lakesumtermpo: North Lake Task Force agenda for Nov. 16 is available. <http://t.co/aonlsW4V>

Like · Comment · Share · 17 hours ago via twitterfeed ·



Lake~Sumter MPO

lakesumtermpo: Executive Committee minutes for Aug. 22 and Sep. 26 are available. <http://t.co/wCR2bRml>

Like · Comment · Share · November 8 at 12:29pm via twitterfeed ·



Lake~Sumter MPO

lakesumtermpo: TAC, CAC and BPAC November Agendas are available. <http://t.co/wCR2bRml>

Like · Comment · Share · November 5 at 11:48pm via twitterfeed ·



Lake~Sumter MPO

lakesumtermpo: Updated Lake-Sumter MPO Organizational Chart is available. <http://t.co/MHpMGEQ4>

Like · Comment · Share · October 18 at 4:07pm via twitterfeed ·



Lake~Sumter MPO

lakesumtermpo: Florida Department of Transportation Toll Rate Rulemaking Public Hearing for Indexing <http://t.co/kyTiKTT6>

Like · Comment · Share · October 6 at 5:04pm via twitterfeed ·

You and Lake~Sumter MPO



3 friends like this.

Friends of the Florida Black Bear S...

Recommend This Place



Help your friends discover great places to visit by recommending **Lake~Sumter MPO**.

Write a recommendation...

Birthdays

See All



Richard Riga

It's his birthday.

Say Happy Birthday



Evelyn Arcala Woods

It's her birthday.

Say Happy Birthday

Sponsored Story

See All



Sandra Friend likes National Park Foundation.



**National Park
 Foundation**

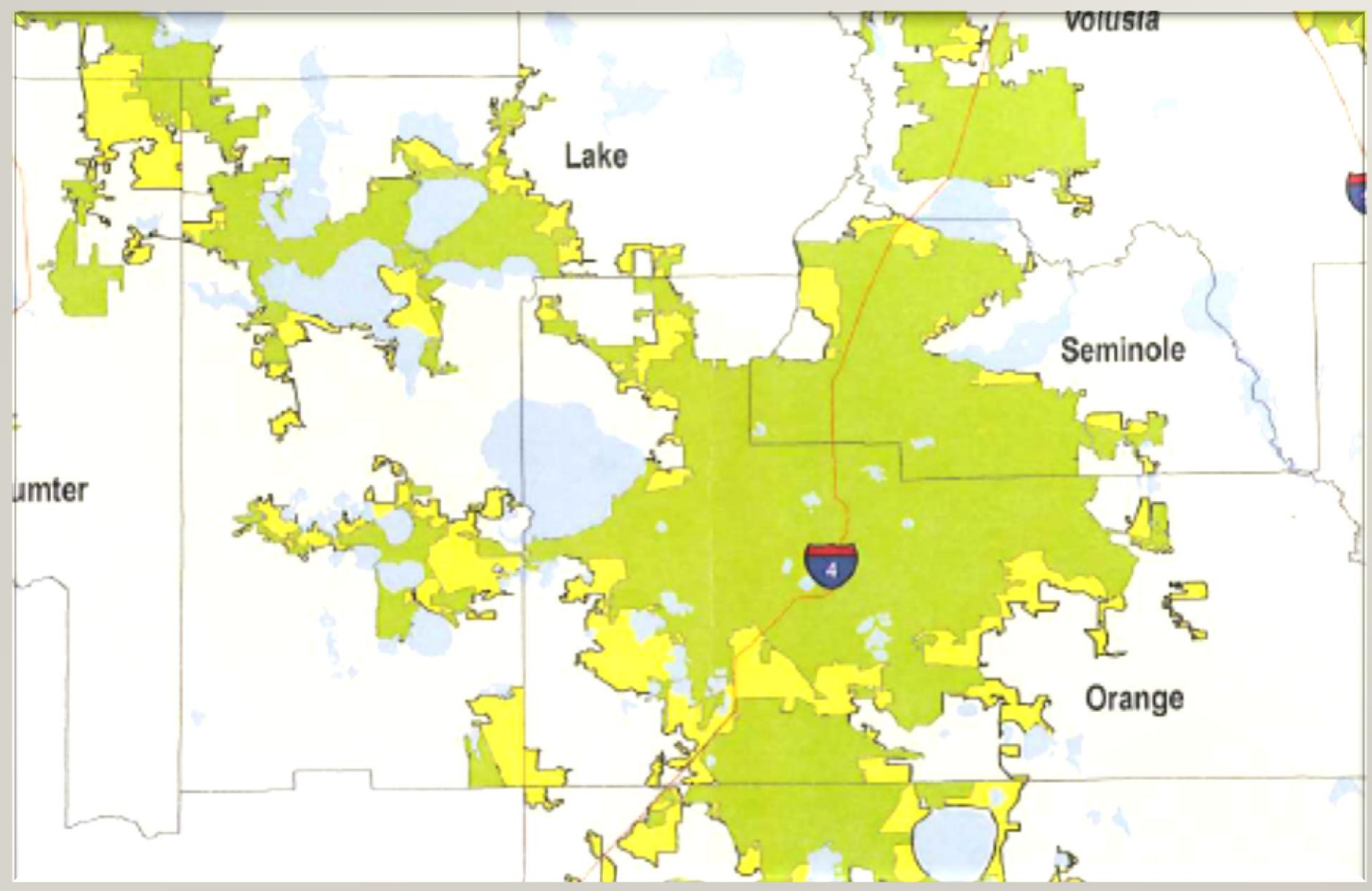
- ❑ MPO INTRODUCTION
- ❑ MPO HISTORY
- ❑ MPO COMPONENTS
- ❑ MPO PRODUCTS
- ❑ MPO SERVICES

- Federal-Aid Highway Act of 1962
 - Mandated urban transportation planning as a condition for receiving federal funds in urbanized areas
 - Required local, state and federal officials to provide a Continuing, Comprehensive, and Cooperative (3C) planning process
- Federal-Aid Highway Act of 1974
 - Mandated all urbanized areas having a population of 50,000 or more designate an MPO to administer federal transportation funds

□ Florida Statutes

- MPOs are created under the authority of Section 163.01, F.S. (aka the Florida Interlocal Cooperation Act of 1969), providing that governmental agencies may enter into interlocal agreements permitting the joint exercise of such powers or authority that the agencies share in common or that each might exercise separately
- Section 339.175 (1), F.S., requires that any urbanized area, as a condition for the receipt of federal capital or operating assistance, has a continuing, cooperative, and comprehensive transportation planning process that results in plans and programs consistent with the comprehensively planned development of the urbanized area

- 1990 U.S. Census
 - Urbanized areas of Lake County qualified for potential MPO
- 2000 U.S. Census
 - Lake County contained three urbanized areas
 - Lady Lake/Villages urban area spread into Sumter County
- Lake~Sumter MPO formed in February 2004
 - Signed into existence by Governor Jeb Bush
 - Interlocal agreement among Lake County, Sumter County, and all 19 municipalities within Lake County and Sumter Counties



- ❑ MPO INTRODUCTION
- ❑ MPO HISTORY
- ❑ MPO COMPONENTS
- ❑ MPO PRODUCTS
- ❑ MPO SERVICES



Joe Wynkoop
Town of Montverde



Glenn Burns
(Alternate)
Town of Montverde



Eric Olson
City of Umatilla



Peter Tarby
(Alternate)
City of Umatilla



Kathie Joiner
Sumter County
School Board



Pete Petree
Florida Central
Railroad / Ex-Officio



Debbie Stivender
Lake County Schools



Rosanne Brandenburg
(Alternate)
Lake County Schools



Kenneth Jones
(Alternate)
Sumter County
Schools



Robert Maraio
(Alternate)
City of Mount Dora



Kirby Smith
City of Tavares



Lori Pfister
(Alternate)
City of Tavares



Mitchell Mack
(Alternate)
Town of Astatula

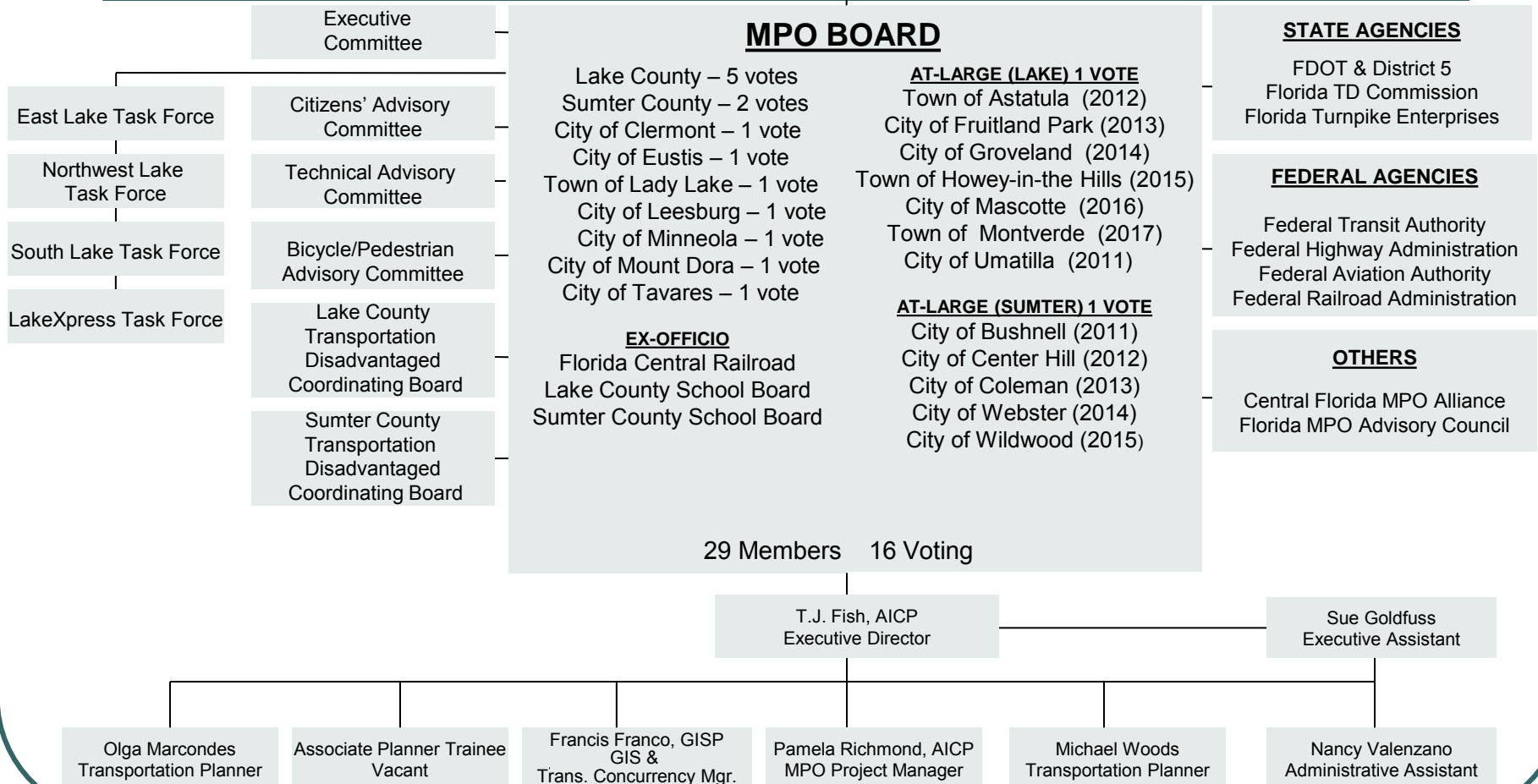


Sharon Kelly
City of Fruitland Park



ORGANIZATIONAL CHART

CITIZENS OF LAKE and SUMTER COUNTIES



□ Executive Committee

Executive Committee



Don Burgess
 (Chairman)
 Sumter County



Jim Richards
 (Chairman-Elect)
 Town of Lady Lake



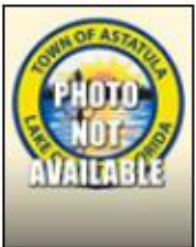
Sean Parks
 (1st Vice-Chairman /
 Treasurer)
 Lake County, D2



Robert Thielhelm
 (2nd Vice-Chairman)
 City of Mount Dora



Jennifer Hill
 (Immediate Past
 Chairman)
 Lake County, D1



Jake Farley
 (Lake At-Large
 Representative)
 Town of Astatula



Vacant
 (Sumter At-Large
 Representative)
 City of Center Hill

- ❑ Lake County Transportation Disadvantaged Coordinating Board (TDCB)
 - ❑ Advisory body on para-transit issues

- ❑ Sumter County Transportation Disadvantaged Coordinating Board (TDCB)
 - ❑ Advisory body on para-transit issues

- ❑ Bicycle & Pedestrian Advisory Committee (BPAC)
 - ❑ Advises on specific issues in regional context

- ❑ MPO INTRODUCTION
- ❑ MPO HISTORY
- ❑ MPO COMPONENTS
- ❑ MPO PRODUCTS
- ❑ MPO SERVICES

Lake~Sumter MPO



TRANSPORTATION 2035

minimizing transportation-related fuel consumption and air pollution

- Minimum 20-year planning horizon

- Efficient Transportation Decision Making (ETDM) Planning Screen



projects

- Used for projects that will be included in cost feasible projects in the Long Range Transportation Plan (LRTP)

□ Transit Development Plan (TDP)

- A strategic plan to guide transit operations over a 10-year period
- Reliance on a main block
- Mileage annually to monitor community goals
- Major updates are required every five years



Unified Planning Work Program

July 1, 2012 - June 30, 2013
 and
 July 1, 2013 - June 30, 2014

Prepared by:

Lake-Sumter Metropolitan Planning Organization
 1616 South 14th Street
 Leesburg, Florida 34748
 352.315.0170/352.315.0993 (fax)
 LakeSumterMPO.com

FY 2012/13	FY 2013/14
FM# 417957-1-14-02	FM# 417957-1-14-02
FAP 0457 049 M	FAP 0457 049 M

Code of Federal Domestic Assistance Numbers:
 20.205—Highway Planning and Construction
 20.505—Federal Transit Technical Studies Grant

The preparation of this report was financed in part by the U.S. Department of Transportation, Federal Highway Administration, Federal Transit Administration with the Florida Department of Transportation and local participating governments. The views and opinions of the report do not necessarily reflect the official views or policy of the U.S. Department of Transportation.

FY 2012/13 & FY 2013/14 UPWP
 April 25, 2012

- Unified
- Ide
- and
- to b
- the
- Coc
- tran
- tran
- acti
- A U
- ann

n (UPWP)
 ing
 at are
 during
 ed
 g
 veloped

TIP Interactive Map of Lake & Sumter Counties



Legend

TIP Projects (points)

- Miscellaneous Maintenance
- Crossing/Siding
- Landholding
- Intersections (Traffic Signals/Turn Lanes)

TIP Projects (lines)

- Highways
- Drainage Improvements
- Replace Low Level Bridge
- Bridge Repair/Restoration
- Sidewalk
- Bike Path/Trail
- Canal
- Roadway Capacity
- Secondary/Arterial Maintenance

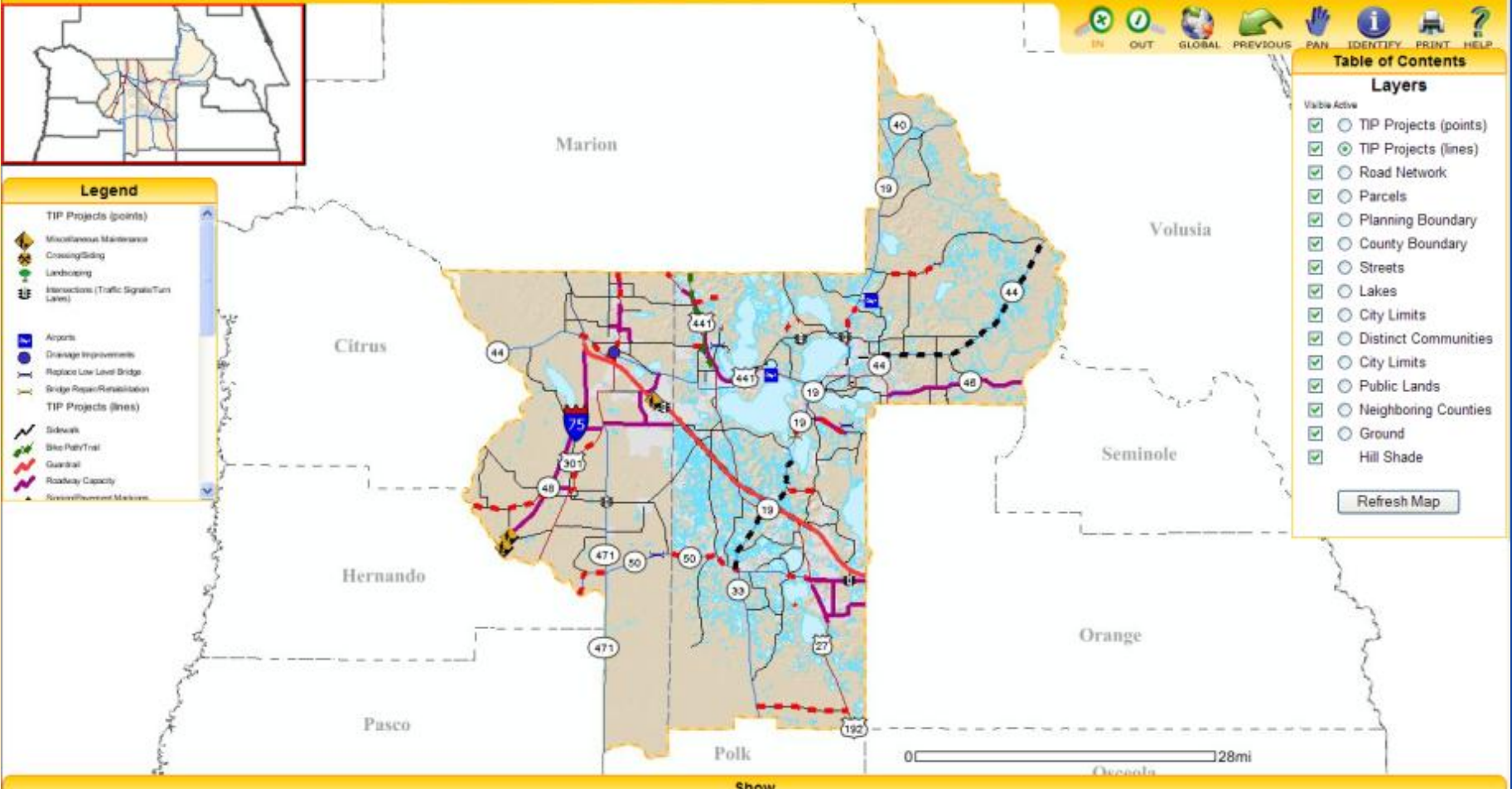
Table of Contents

Layers

Visible Active

- TIP Projects (points)
- TIP Projects (lines)
- Road Network
- Parcels
- Planning Boundary
- County Boundary
- Streets
- Lakes
- City Limits
- Distinct Communities
- City Limits
- Public Lands
- Neighboring Counties
- Ground
- Hill Shade

[Refresh Map](#)



annually



LIST OF PRIORITY PROJECTS (LOPP)

2016/17 - 2034/35

Adopted June 22, 2011
Amended August 24, 2011
Amended February 22, 2012

Prepared by the
Lake-Sumter Metropolitan Planning Organization
1616 South 14th Street
Leesburg, FL 34748

This report was financed in part by the Federal Highway Administration, Federal Transit Administration,
Florida Department of Transportation and local participating governments.

- Public
 - Identifi
 - plann
 - MPO
 - Provid
 - oppo
 - all ph
- Strateg
 - Spec
 - transi
- Opera
 - Polici

***Lake~Sumter
Metropolitan Planning Organization
Public Involvement Plan***

*Prepared by the Lake~Sumter Metropolitan Planning Organization
1616 South 14th Street
Leesburg, FL 34748
352.315.0170/352.315.0993 (fax)
www.LakeSumterMPO.com*

April 25, 2012

and the
n by the

Involved in
process

, trails,

- ❑ MPO INTRODUCTION
- ❑ MPO HISTORY
- ❑ MPO COMPONENTS
- ❑ MPO PRODUCTS
- ❑ MPO SERVICES

❑ Transportation Management System (TMS)

- ❑ The MPO entered into an Interlocal agreement with Lake and Sumter counties, the 19 municipalities of Lake County, and Sumter County to monitor transportation impacts from proposed developments and assist in the determination of necessary multimodal mitigation

❑ Safety Program

- ❑ The MPO developed a two-county regional crash data management system to monitor unsafe transportation facilities and to better incorporate safety into the MPO's priority development process

- Pavement Management
- Traffic Counts
- Future Transit Plans including Passenger and Freight Rail Service
- Lake County Trails Master Plan
- Sumter County Trails Master Plan in the near future

- ❑ DRI Review and Mitigation
 - ❑ The MPO has reviewed traffic analyses and assisted in determining mitigation for DRIs in Lake County, Sumter County, Clermont, Groveland, Leesburg, Minneola, and Wildwood

- ❑ Transportation Planning and Modeling
 - ❑ The MPO has worked with FDOT in the development, updating, and maintenance of the Central Florida Regional Planning Model (CFRPM)
 - ❑ Includes reviewing model operation, updating traffic analysis zone structures, and developing future year land use

Sumter County Transportation Disadvantaged Service Plan

FY 2008/09-2012/13
Annual Update May 10, 2011



Prepared by the Lake-Sumter Metropolitan Planning Organization &
Sumter County Board of County Commissioners
with the assistance of the
Sumter County Transportation Disadvantaged Coordinating Board

Lake County Transportation Disadvantaged Service Plan

FY 2008/09-2012/13
Annual Update
May 9, 2011



Prepared by the Lake-Sumter Metropolitan Planning Organization &
Lake County Board of County Commissioners
with the assistance of the
Lake County Transportation Disadvantaged Coordinating Board

- ❑ Comprehensive Planning
 - ❑ Mobility Policies and Plans, Transportation Element
 - ❑ The MPO has worked, and will continue to work, with its member governments on solutions to improve mobility
 - ❑ The MPO reviews traffic studies submitted to support comprehensive plan amendments
 - ❑ The MPO drafted the traffic study methodology for the use of the municipalities within the region

PROMOTING REGIONAL TRANSPORTATION PARTNERSHIPS



1616 South 14th Street
Leesburg, FL 34748
(352) 315-0170
LakeSumterMPO.com