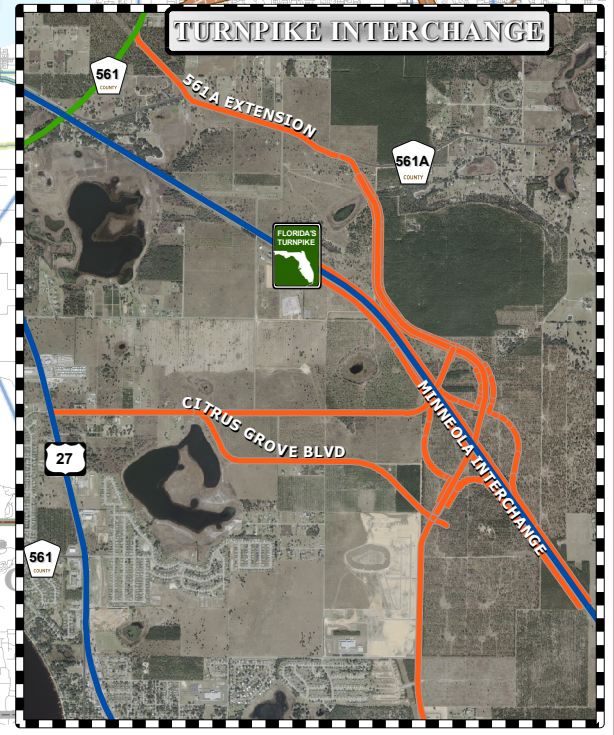
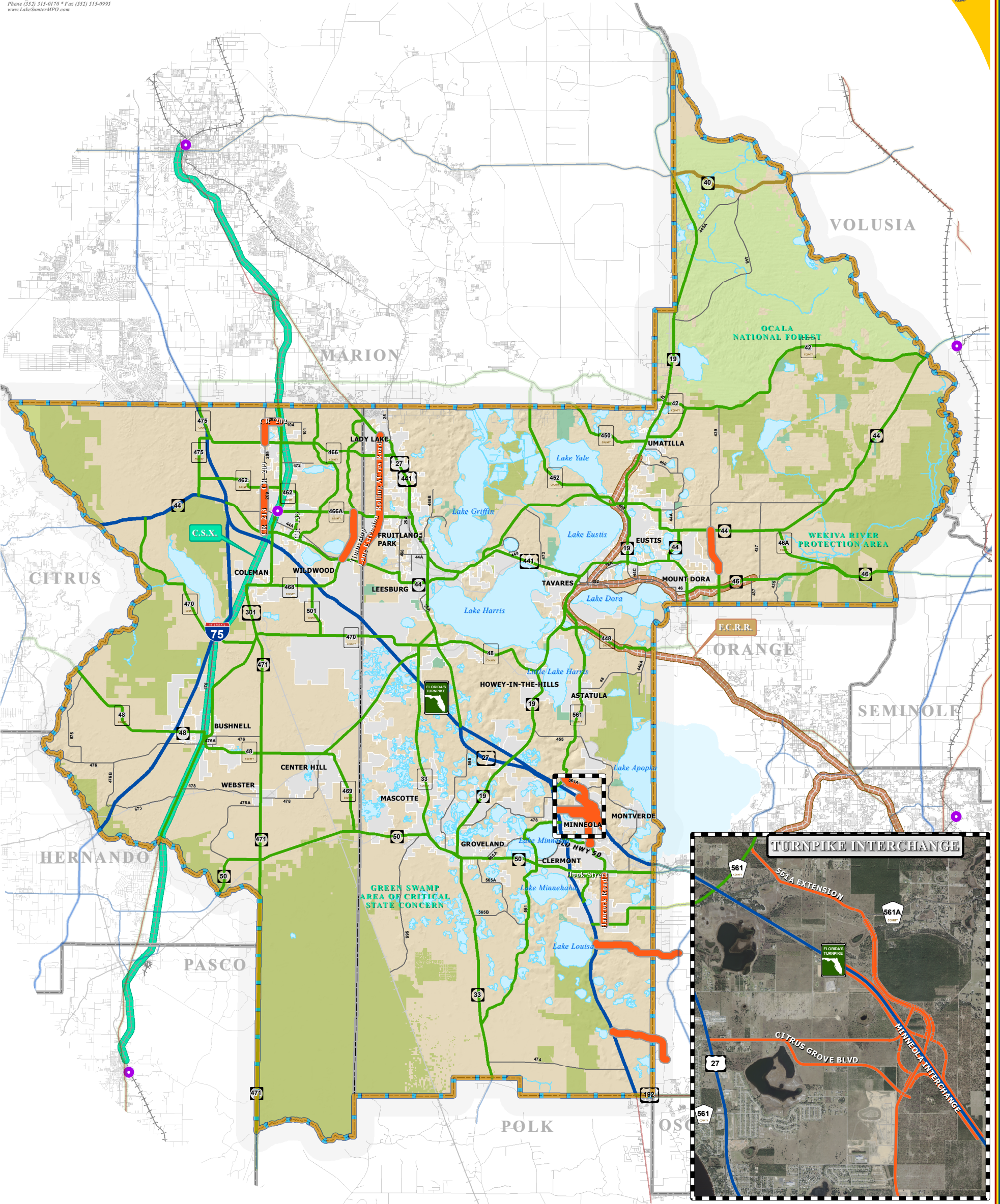
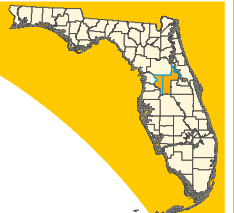


EMERGING REGIONALLY SIGNIFICANT CORRIDORS



LEGEND

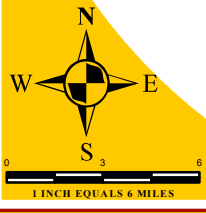
- Water Body
- Municipal Area
- County Delineation
- Lake-Sumter MPO Boundary
- Public Lands Managed by Federal Agency
- Public Lands Managed by State Agency
- Public Lands Managed by Local Agency
- Amtrak Station
- Active Railroad
- Abandoned Railroad
- County Road
- State Road
- US Highway
- Interstate
- Turnpike

Emerging Regionally Significant Corridors

- Adopted Regional Corridor Classification**
- Regionally Significant Corridor
 - Strategic Intermodal System
 - Emerging Strategic Intermodal System
 - Regionally Significant Rail Corridor - C.S.X.
 - Emerging Regionally Significant Rail Corridor - F.C.R.R.

ADOPTED: SEPTEMBER 28, 2005
REVISED: JANUARY 25, 2006
REVISED: APRIL 26, 2006
REVISED: APRIL 25, 2007
REVISED: DECEMBER 3, 2008
REVISED: MAY 26, 2010
REVISED: DECEMBER 8, 2010
REVISED: JANUARY 26, 2011

NOTE:
Corridors may be eligible for Transportation Regional Incentive Program (TRIP) funding.



TRANSPORTATION PLANNING AREA SUMTER AND LAKE COUNTY, FLORIDA



DATA SOURCES:
Lake and Sumter County GIS Department, Planning
Public Lands (Florida Managed Areas, (FLMA)
Florida Natural Areas Inventory (FNAI) Data, 2008
Data Compilation and Map production compliments of the
Lake-Sumter Metropolitan Planning Organization.
This map product was prepared from a Geographic Information System established by the Lake-Sumter Metropolitan Planning Organization and Lake County Board of County Commissioners. Its employees, agents and personnel make no warranty as to its accuracy, and in particular its accuracy in showing, dimensions, contents, property boundaries, or placement or location of any man-made features. The Lake-Sumter Metropolitan Planning Organization and Lake County Board of County Commissioners, its employees, agents and personnel MAKE NO WARRANTY OF MERCHANTABILITY OR FITNESS FOR PURPOSES FOR USE, FOR A PROJECT, OR PURPOSE, EXPRESS OR IMPLIED WITH RESPECT TO THIS MAP PRODUCT. Independent verification of all data contained on this map product should be obtained by the user of this product.

MAP COMPOSITION:
JANUARY, 2011