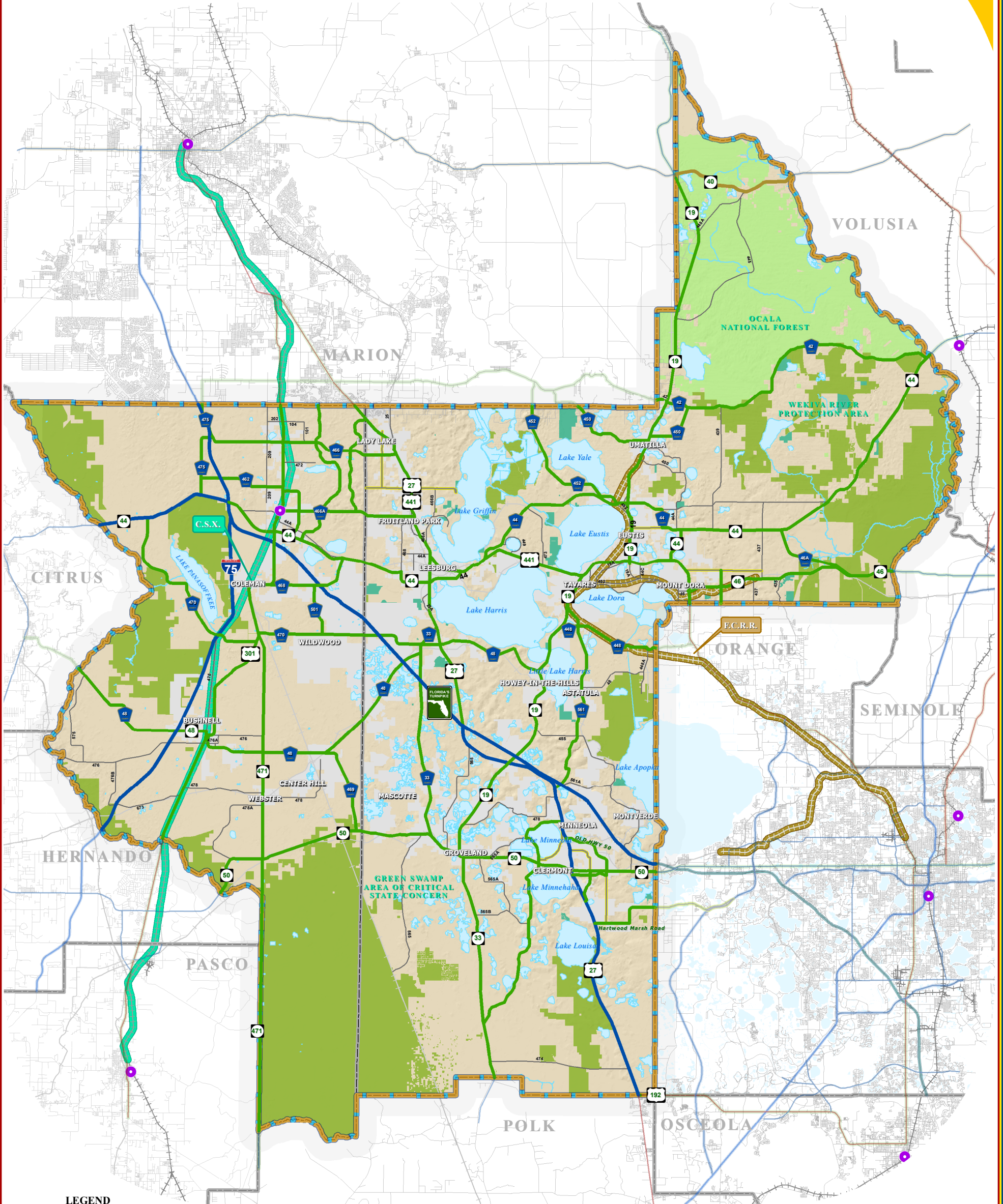
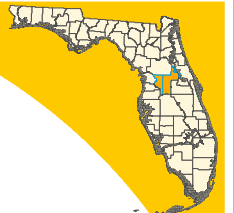


# ADOPTED REGIONALLY SIGNIFICANT CORRIDORS



**LEGEND**

- Water Body
- Municipal Area
- County Delineation
- Lake-Sumter MPO Boundary
- Public Lands Managed by Federal Agency
- Public Lands Managed by State Agency
- Public Lands Managed by Local Agency
- County Road
- State Road
- US Highway
- Interstate
- Turnpike
- Amtrak Station
- Active Railroad
- Abandoned Railroad

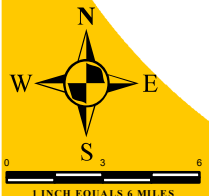
**ADOPTED REGIONAL CORRIDOR CLASSIFICATION**

- Regionally Significant Corridor
- Strategic Intermodal System
- Emerging
- Strategic Intermodal System
- Regionally Significant Rail Corridor - C.S.X.
- Emerging Regionally Significant Rail Corridor - F.C.R.R.

ADOPTED: SEPTEMBER 28, 2005  
REVISED: JANUARY 25, 2006  
REVISED: APRIL 26, 2006  
REVISED: APRIL 25, 2007  
REVISED: DECEMBER 3, 2008  
REVISED: MAY 26, 2010  
REVISED: DECEMBER 8, 2010  
REVISED: JANUARY 26, 2011

**NOTE:**

Corridors may be eligible for Transportation Regional Incentive Program (TRIP) funding.



## TRANSPORTATION PLANNING AREA SUMTER AND LAKE COUNTY, FLORIDA



**DATA SOURCES:**  
Lake and Sumter County GIS Department, Planning  
Public Lands Florida Managed Areas (FLMA)  
Florida Natural Areas Inventory (FNAI) Data  
Data Compilation and Map Production compliments of the  
Lake-Sumter Metropolitan Planning Organization  
**MAP COMPOSITION:**  
JANUARY, 2011  
This map product was prepared from a Geographic Information System established by the Lake-Sumter Metropolitan Planning Organization and Lake County Board of County Commissioners. Its employees, agents and professional make no warranty as to its accuracy, and in particular its accuracy as to the following: dimensions, contents, property boundaries, or placement or location of any single feature thereon. The Lake-Sumter Metropolitan Planning Organization and Lake County Board of County Commissioners, its employees, agents and professional MAKE NO WARRANTY OF MERCHANTABILITY OR FITNESS FOR PURPOSES FOR USE FOR A PROJECT OR PURPOSES IN PRESS OR IMPLIED WITH RESPECT TO THIS MAP PRODUCT. Indemnification of all data contained on this map product shall be obtained by the user of this map.