

# Investing in Transportation to Spark Economic Development

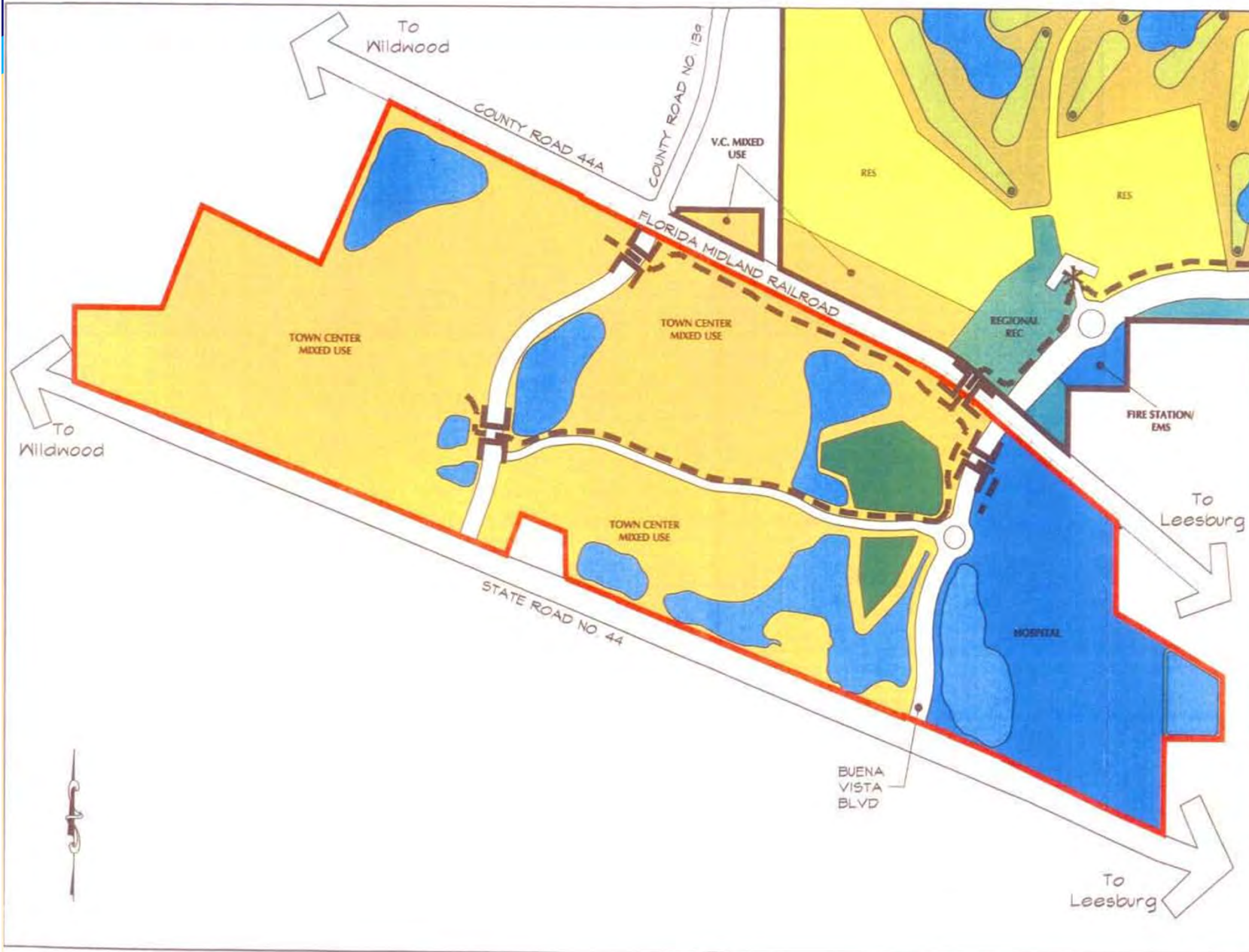
SUMTER COUNTY  
CHAMBER OF COMMERCE

AUGUST 14, 2013



**T.J. Fish, AICP**  
**Executive Director**

# Brownwood



**LEGEND**

- VILLAGES OF SUMTER
- SUMTER COUNTY
- PROPERTY BOUNDARY
- VILLAGES OF SUMTER
- CITY OF WILDWOOD
- PROPERTY BOUNDARY
- R.O.V.
- RESIDENTIAL
- MIXED USE:  
May include one or more of the following:  
Retail, Service, Office, Hotel, Recreation,  
Performing Arts, Residential, Institutional
- HOSPITAL / FIRE STATION / EMS
- REGIONAL / VILLAGE REC CENTER
- GOLF ROUGH
- GOLF GREENS/TEES/FAIRWAYS
- STORMWATER
- BUFFER
- WETLAND
- GATE HOUSE
- TUNNEL
- TRANSPORTATION TRAIL

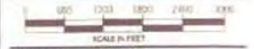
THE VILLAGES OF  
SUMTER D.R.I.  
THIRD SUBSTANTIAL  
DEVIATION  
CITY OF WILDWOOD  
AUGUST 2007

MASTER  
DEVELOPMENT  
PLAN



1020 Lake Sumter Landing  
The Villages, Florida 32162

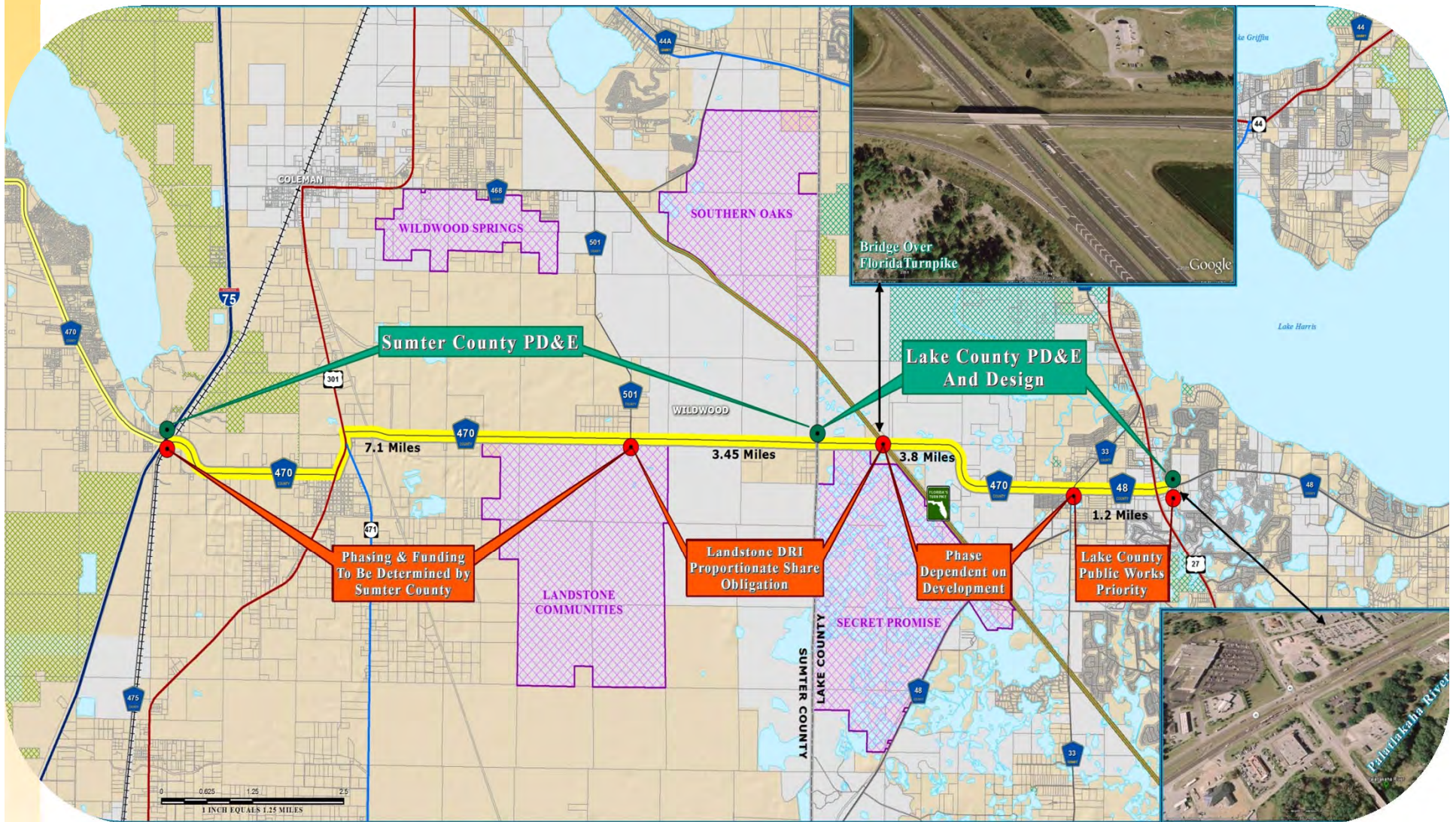
**FRANKE BARLEY** & ASSOCIATES, INC.  
ENGINEERS & SURVEYORS  
& PLANNERS  
Certificate of Authorization Number: 4799  
4400 N.E. 83rd Road Wildwood Florida 34785  
(352) 748-3128



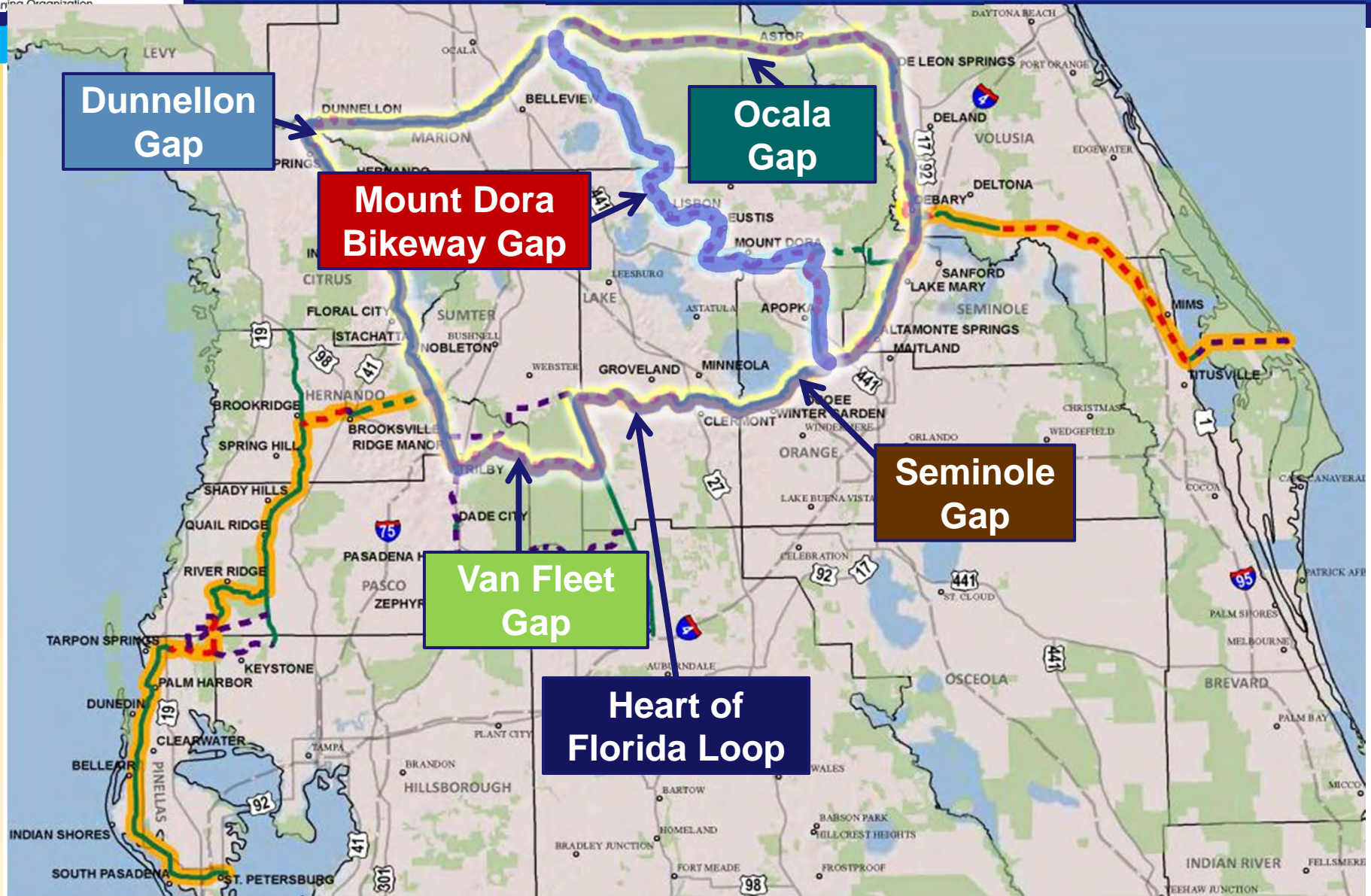
Job number	S21141.1350
File name	MAP H
Date	12-06-06
Drawn by	KMK
Checked by	SRV
Revised	11-29-07

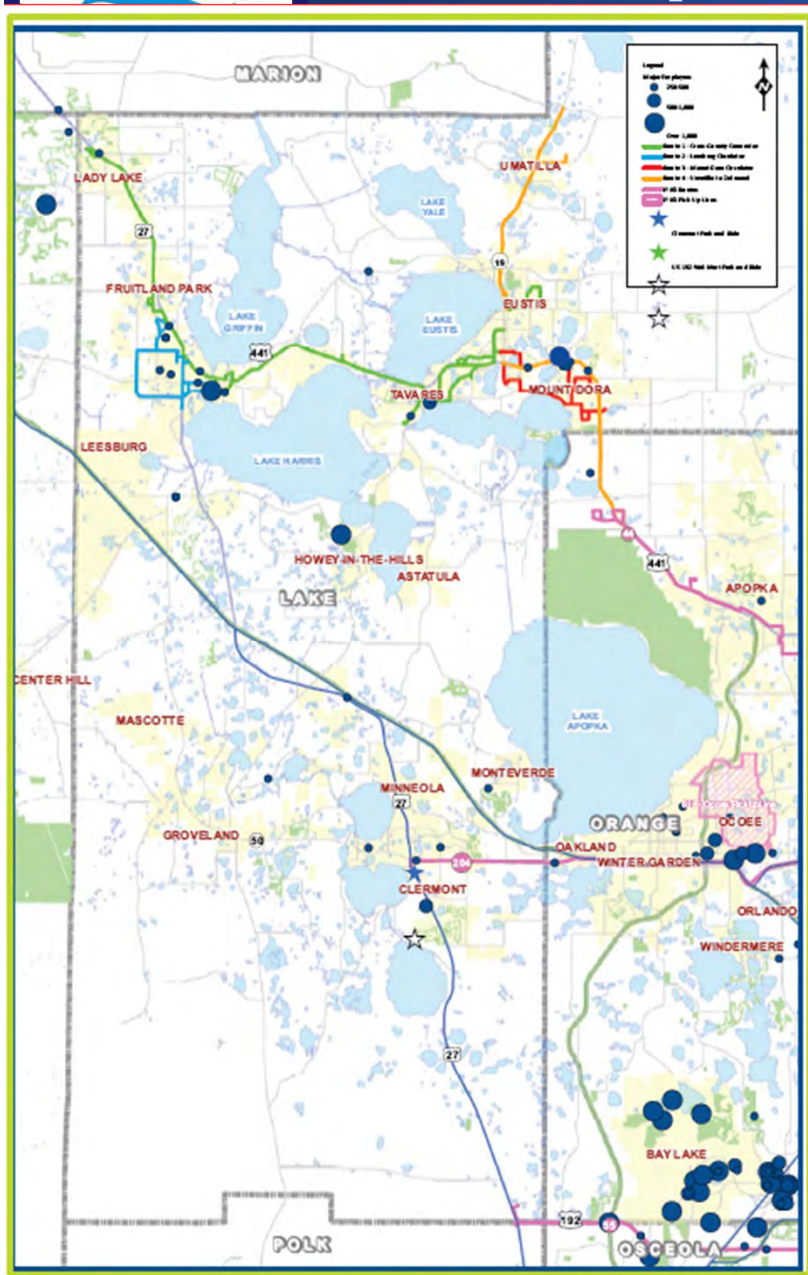
MAP H-2

# C-470 Corridor & C-468 Interchange



# Trail Gaps



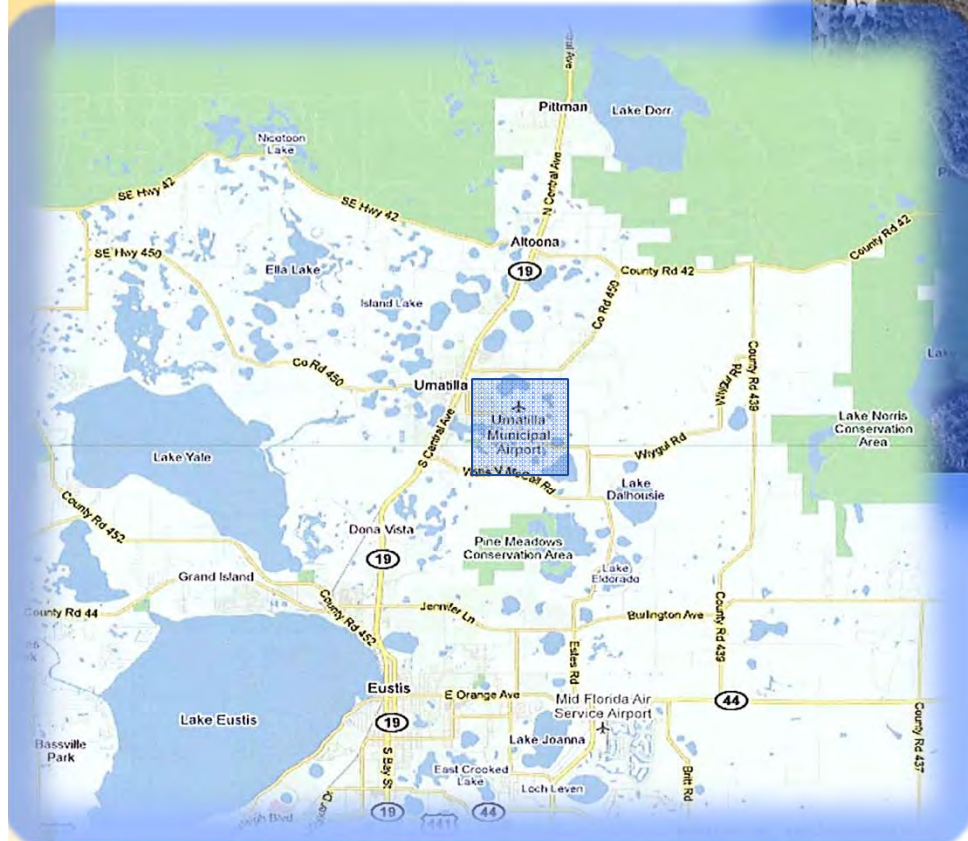


□ LakeXpress provides access to over 14,000 job locations

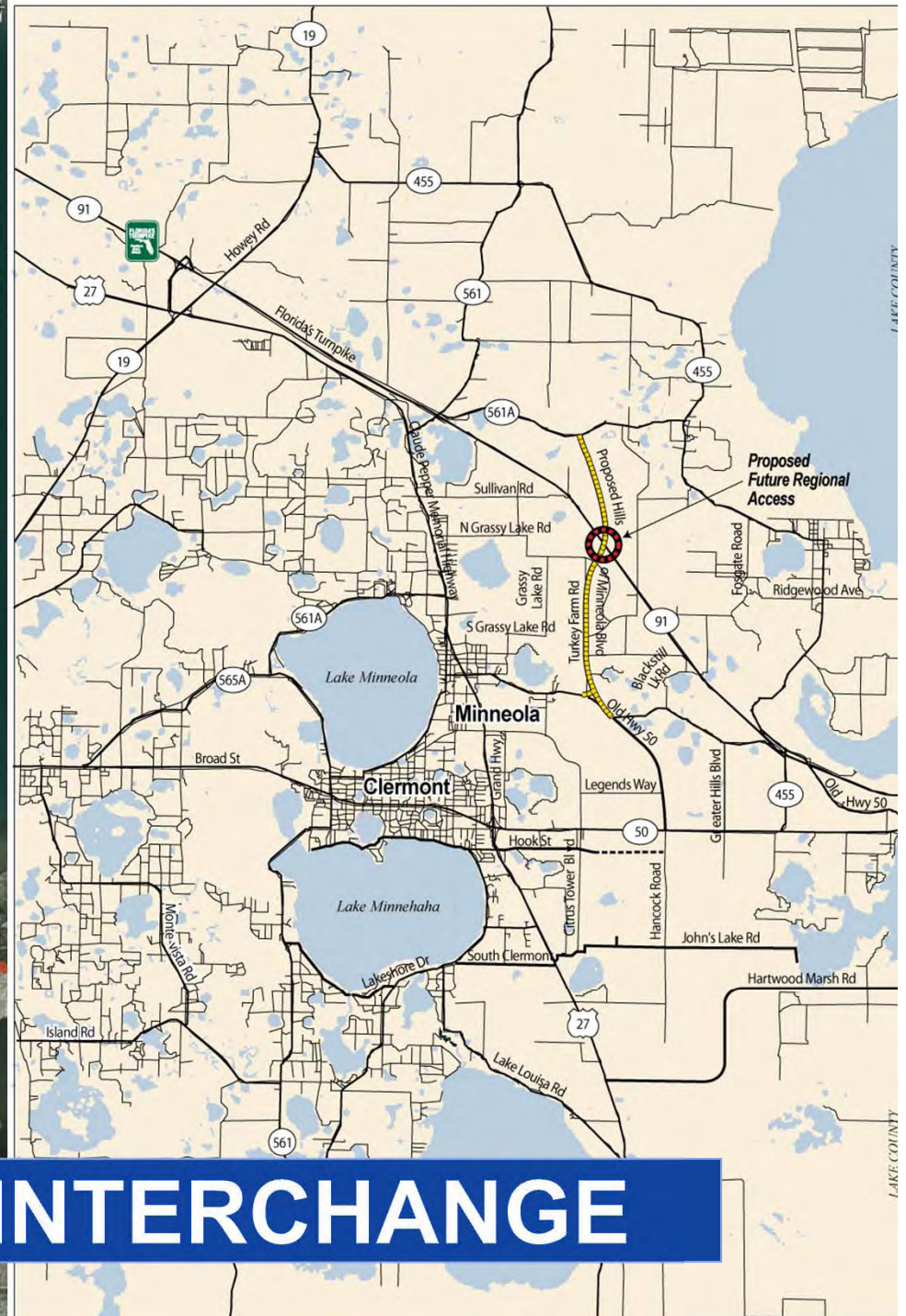
# LEESBURG INTERNATIONAL AIRPORT



# Umatilla Municipal Airport



Map data © 2011 Google, U.S. Geological Survey, Lake County, TerraMetrics. Map data © 2011 Google

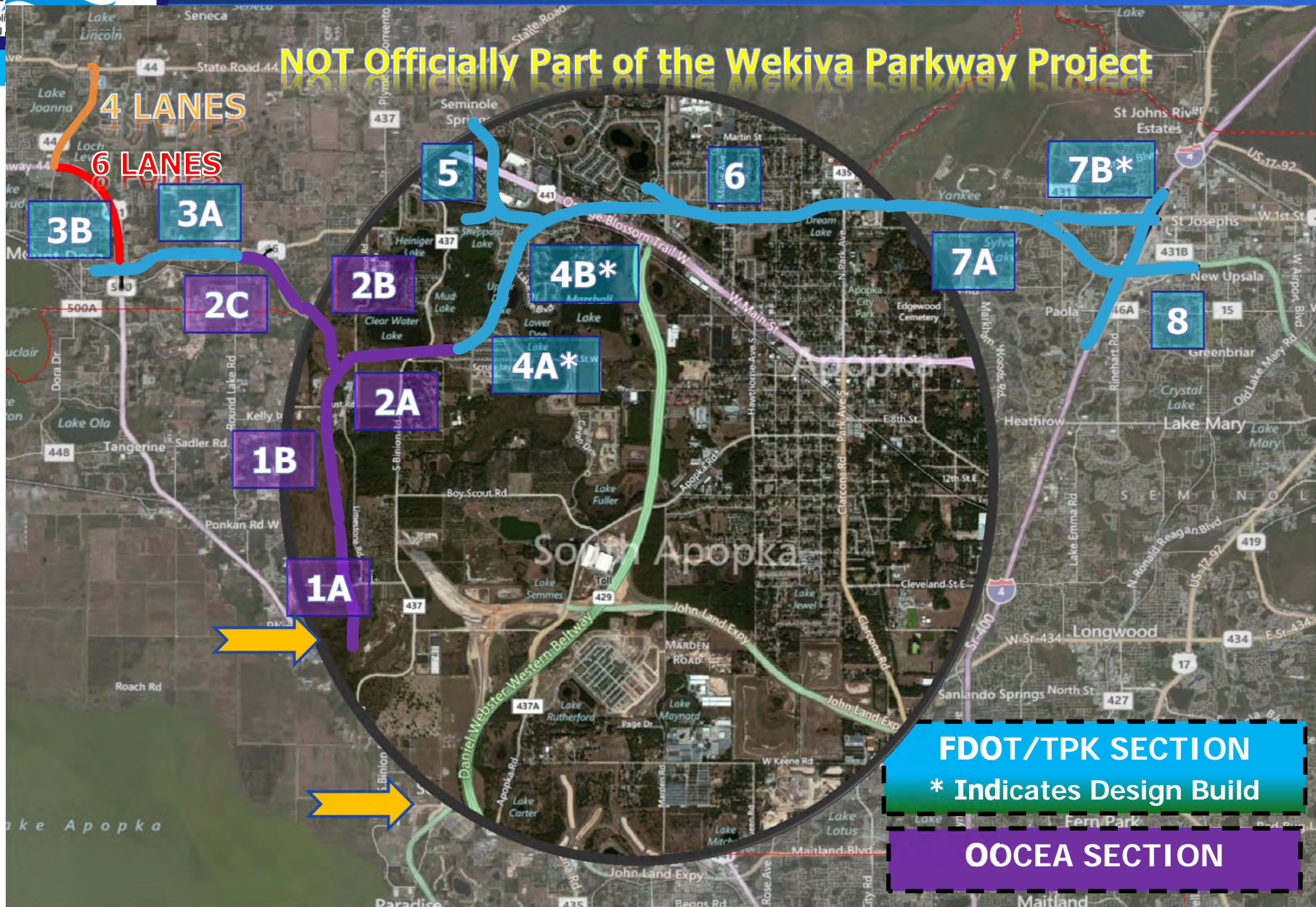


# MINNEOLA INTERCHANGE



# PROJECT CONSTRUCTION SECTIONS

NOT Officially Part of the Wekiva Parkway Project



**FDOT/TPK SECTION**

\* Indicates Design Build

**OOCEA SECTION**

# WEKIVA PARKWAY PROJECT

## Project Construction Sections

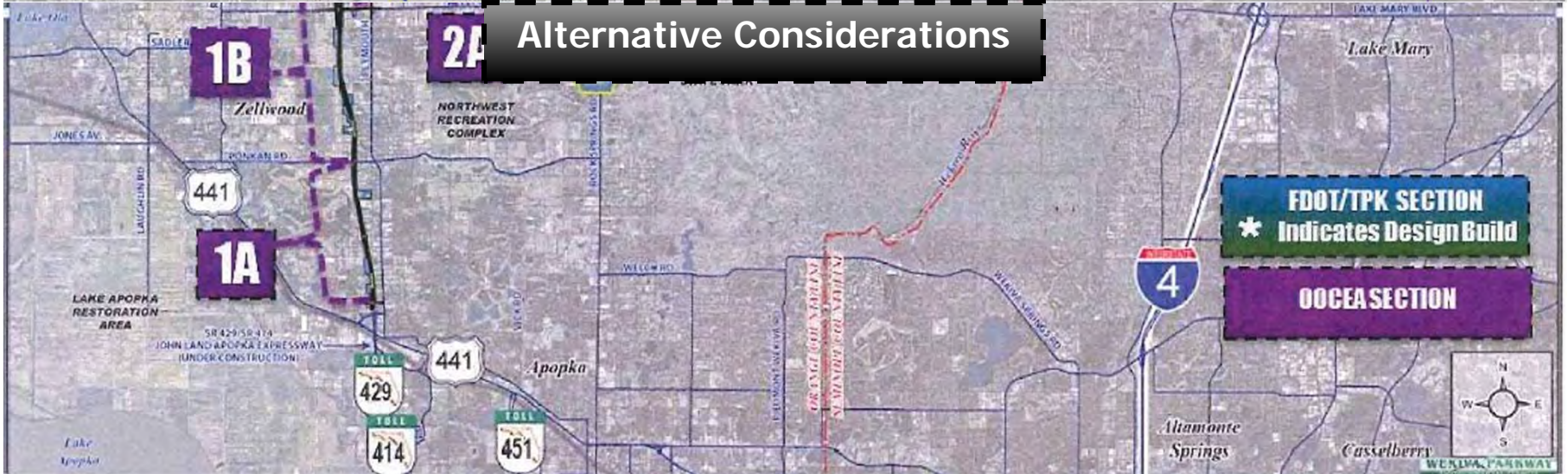
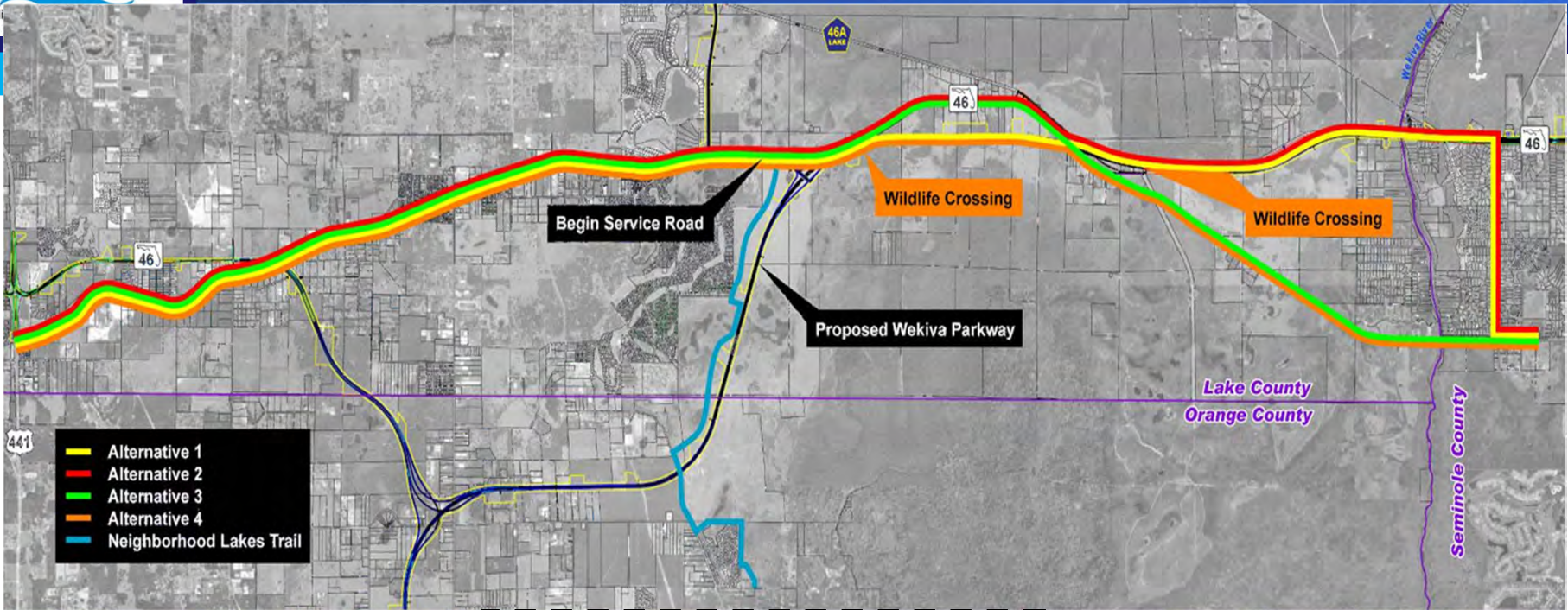


**FDOT/TPK SECTION**  
\* Indicates Design Build  
**OOCEA SECTION**

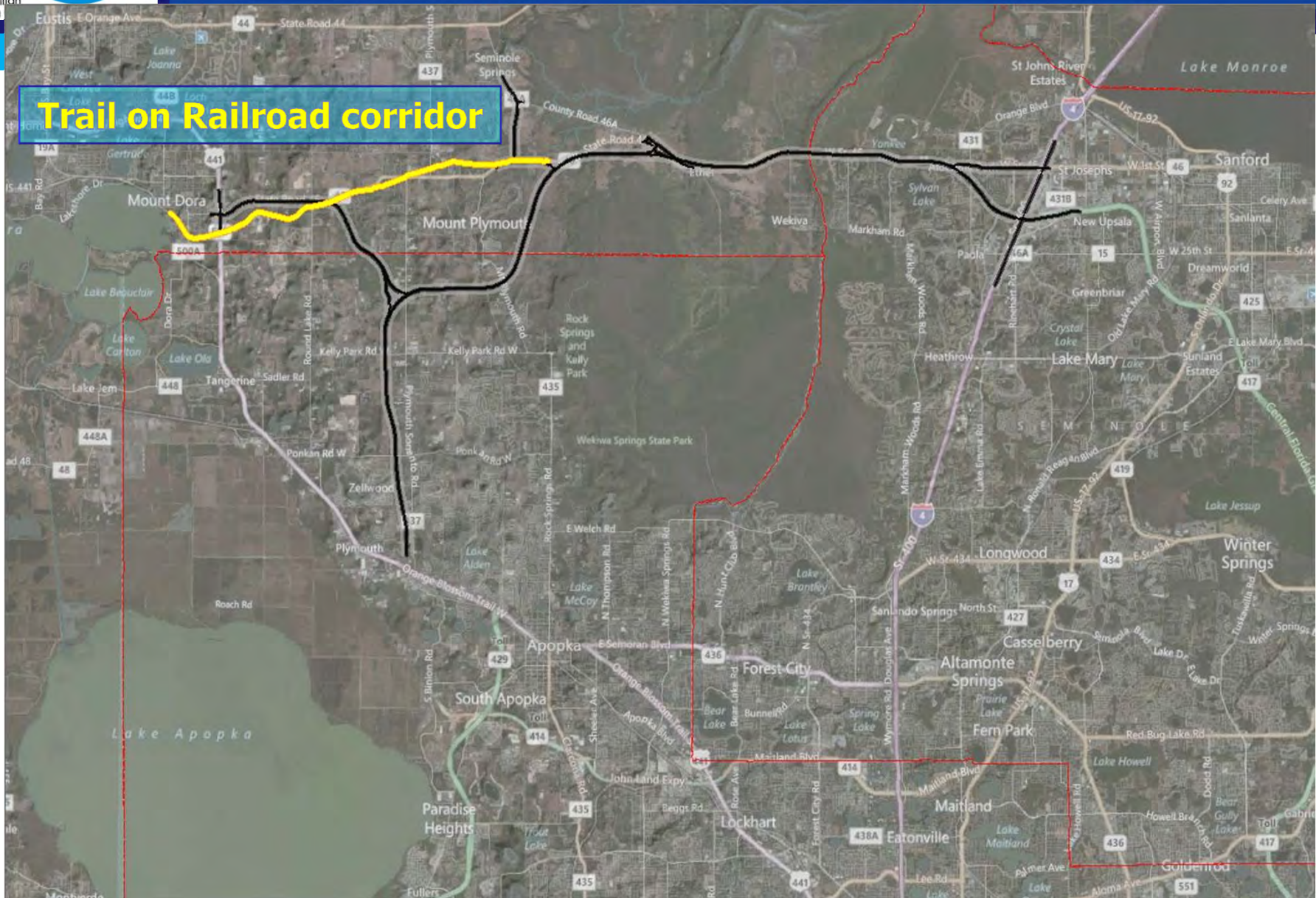


Altamonte Springs  
Casselberry

# WEKIVA PARKWAY TRAILS



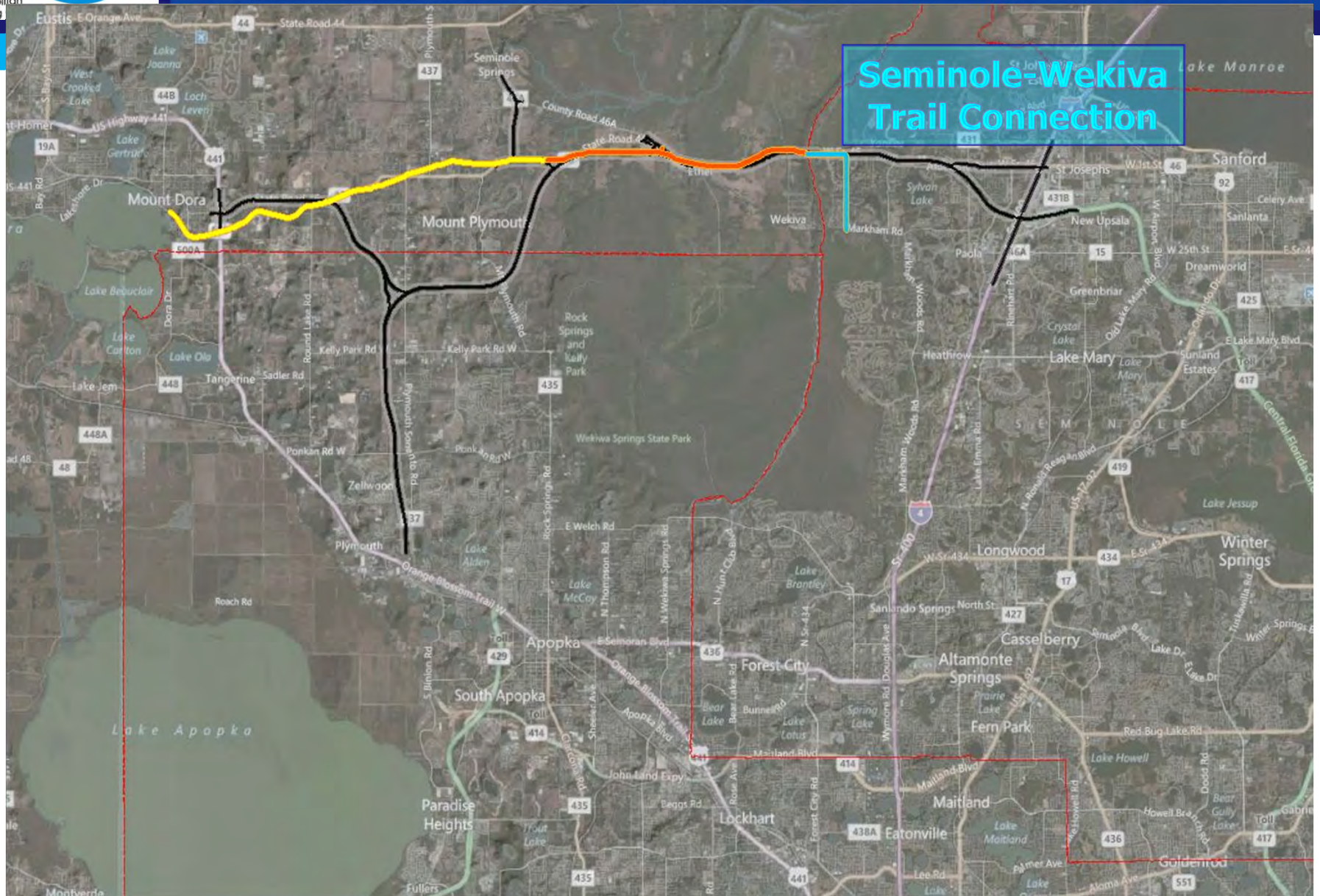
# WEKIVA PARKWAY TRAILS



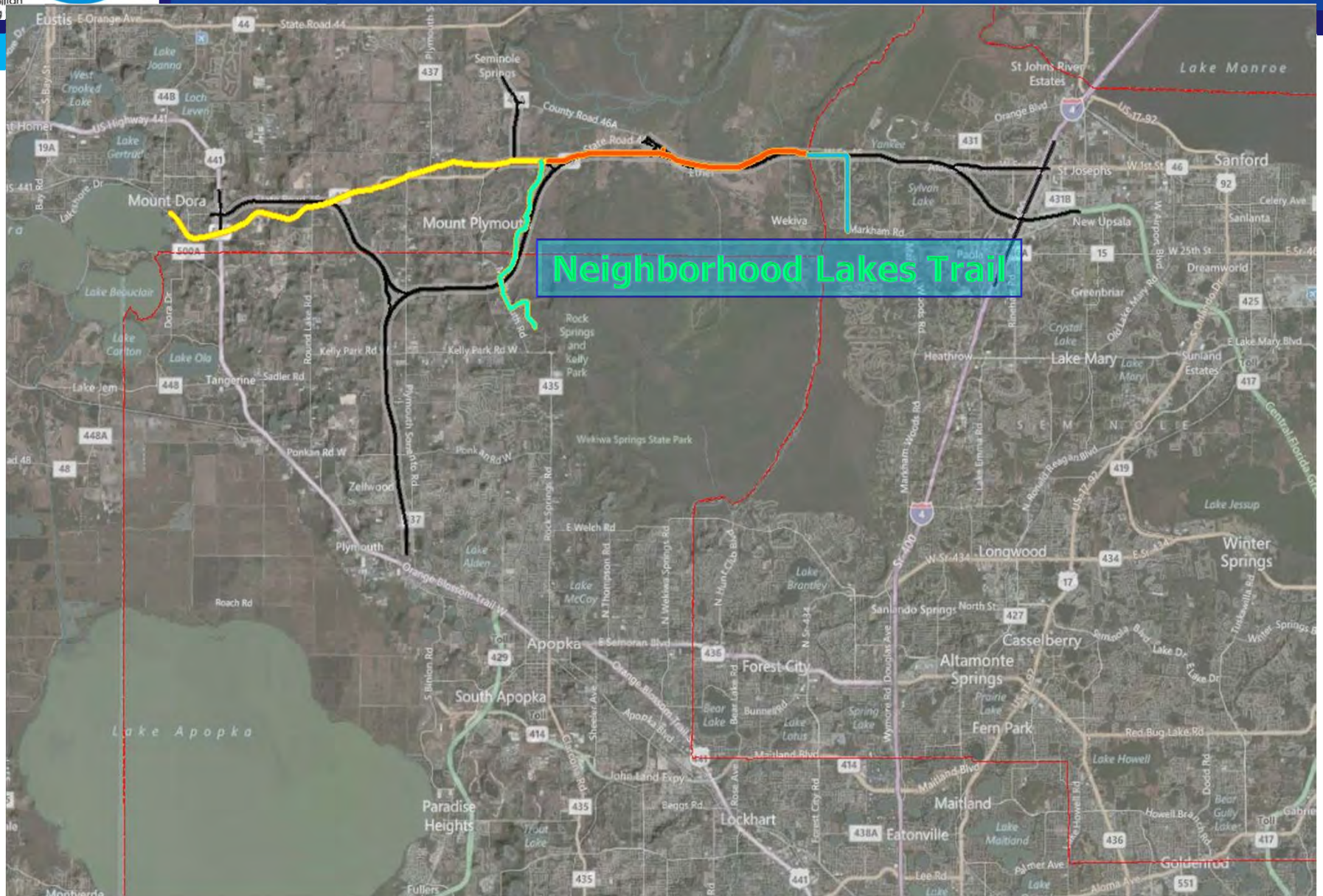
# WEKIVA PARKWAY TRAILS



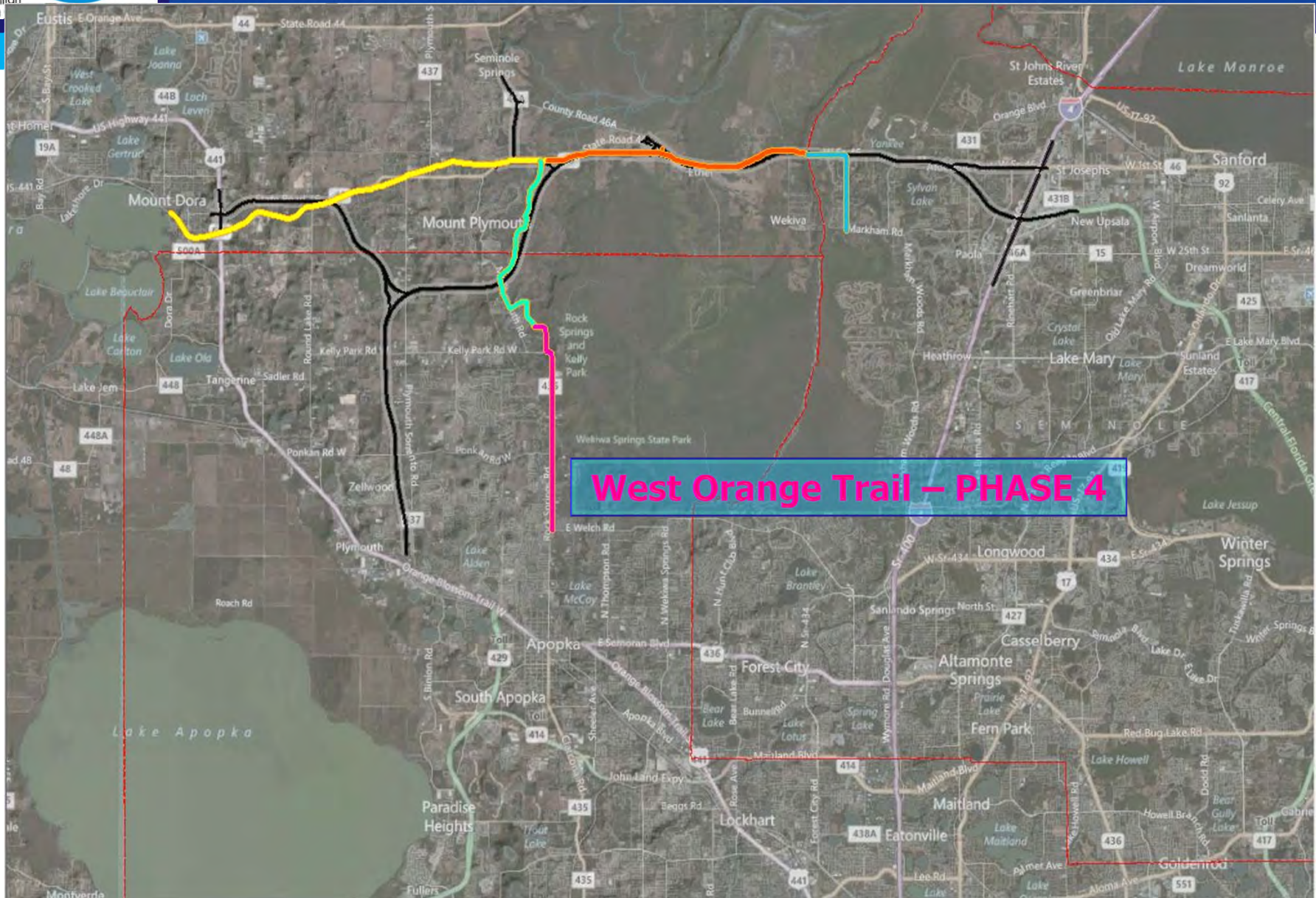
# WEKIVA PARKWAY TRAILS



# WEKIVA PARKWAY TRAILS



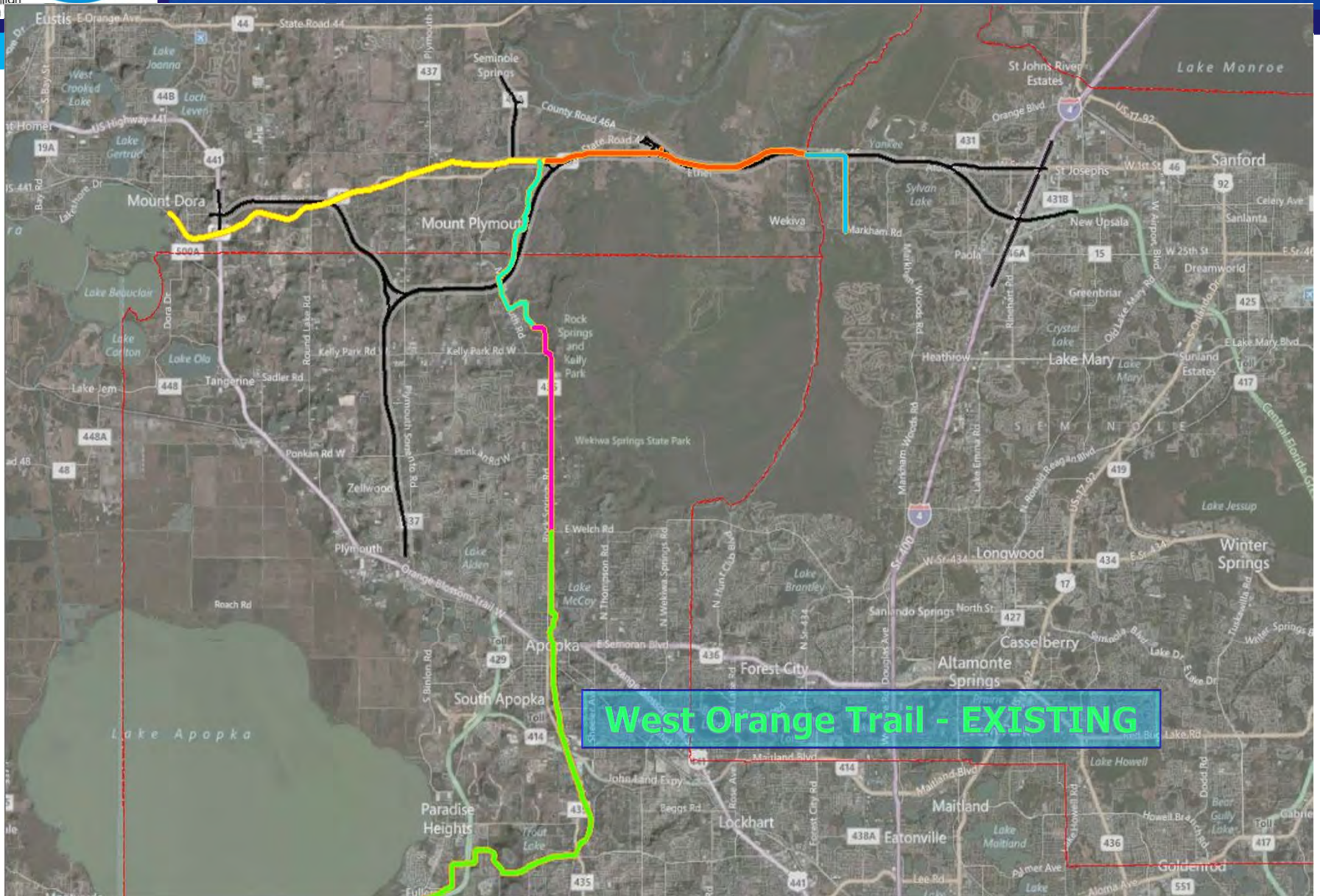
# WEKIVA PARKWAY TRAILS



**West Orange Trail – PHASE 4**

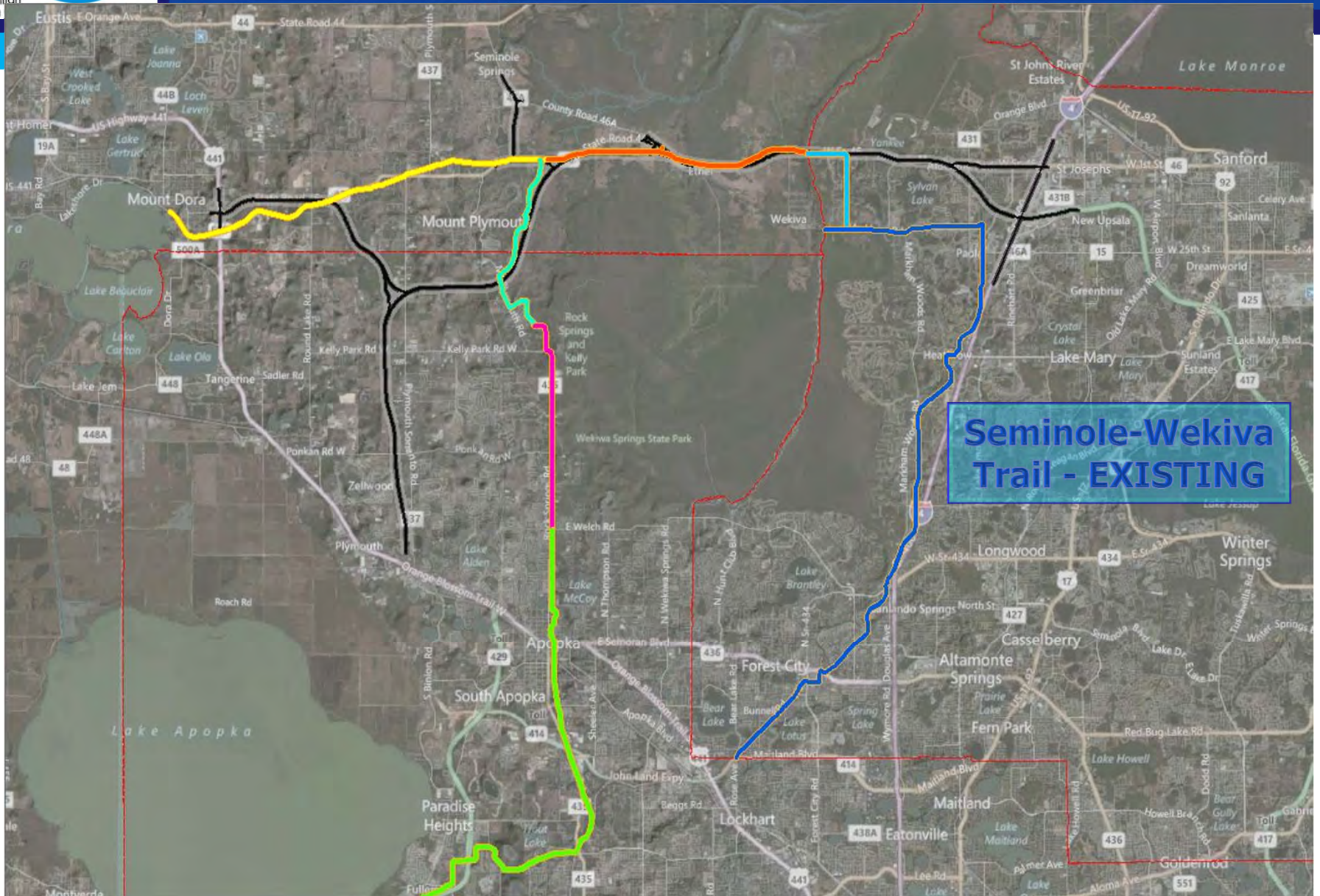


# WEKIVA PARKWAY TRAILS



West Orange Trail - EXISTING

# WEKIVA PARKWAY TRAILS

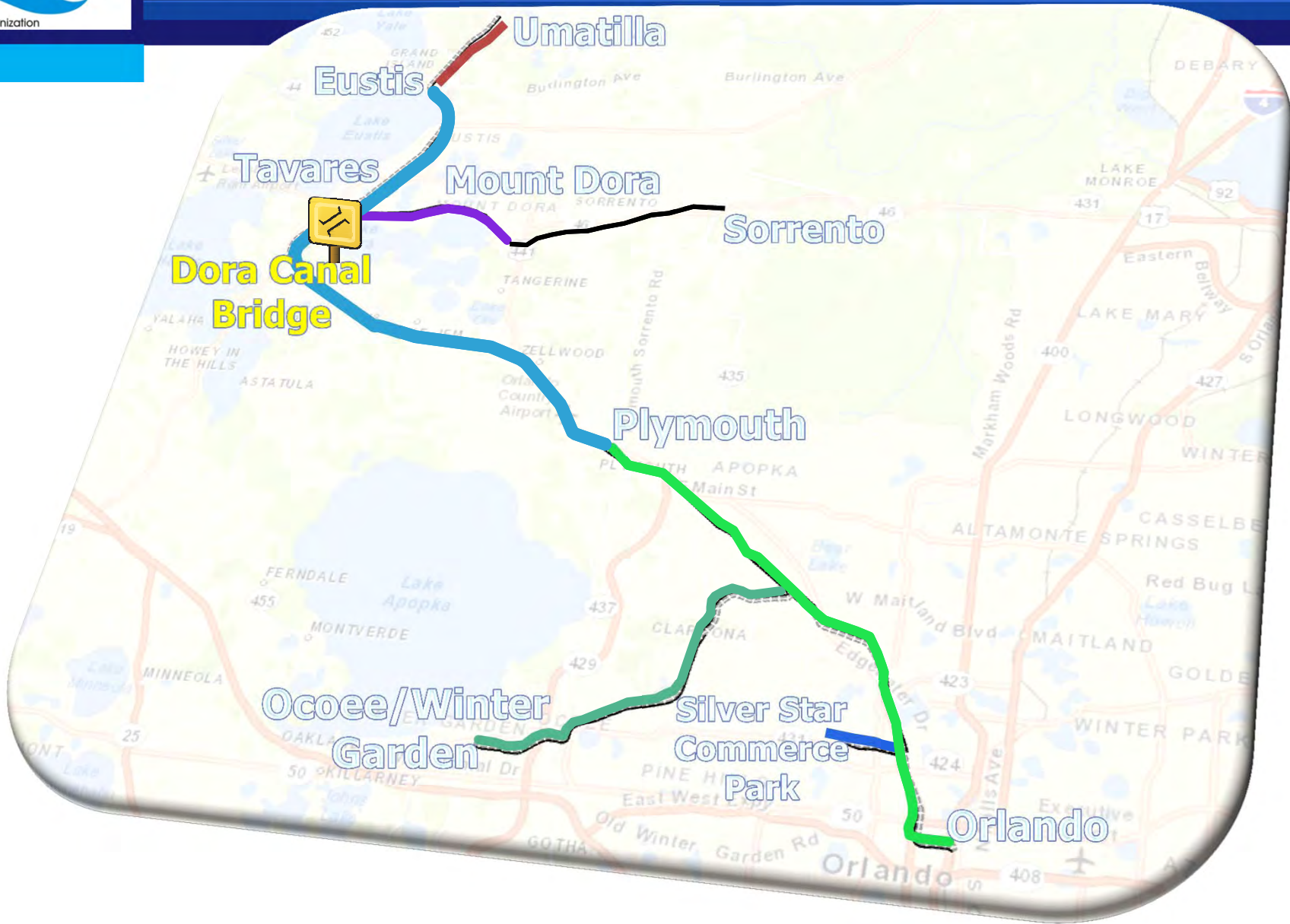


# WEKIVA PARKWAY TRAILS





# RAIL IMPROVEMENTS INITIATIVE



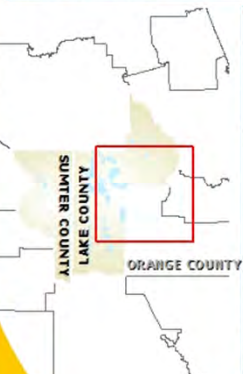
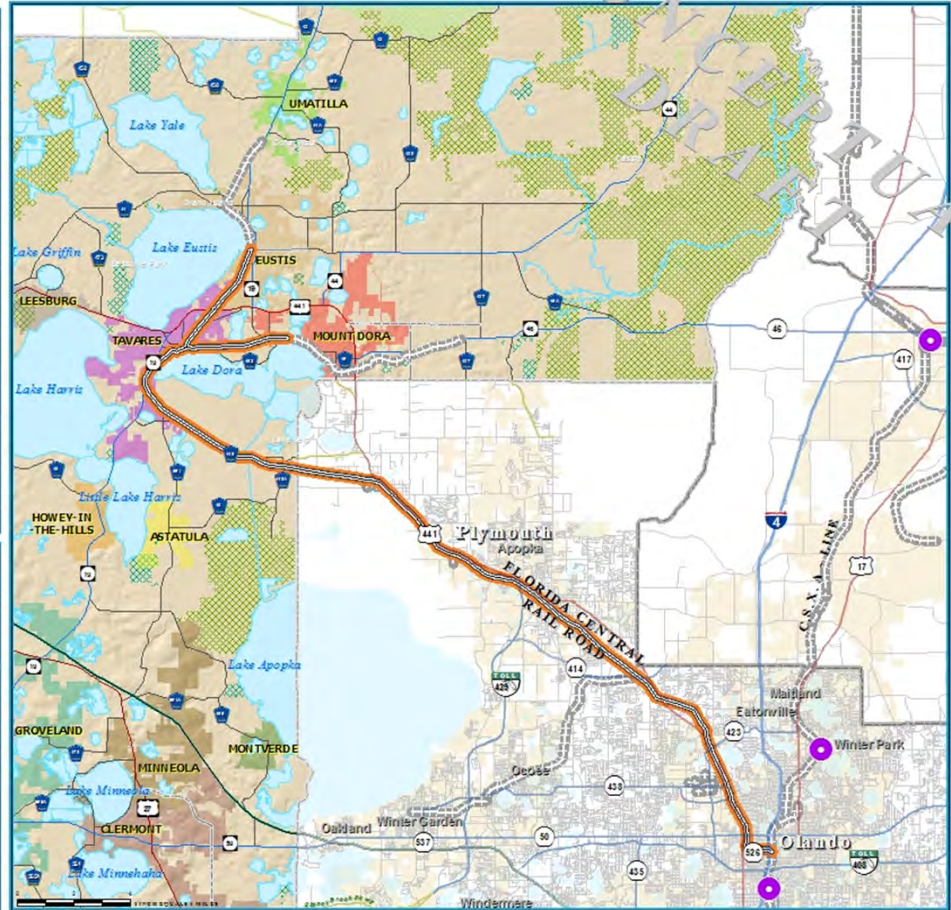
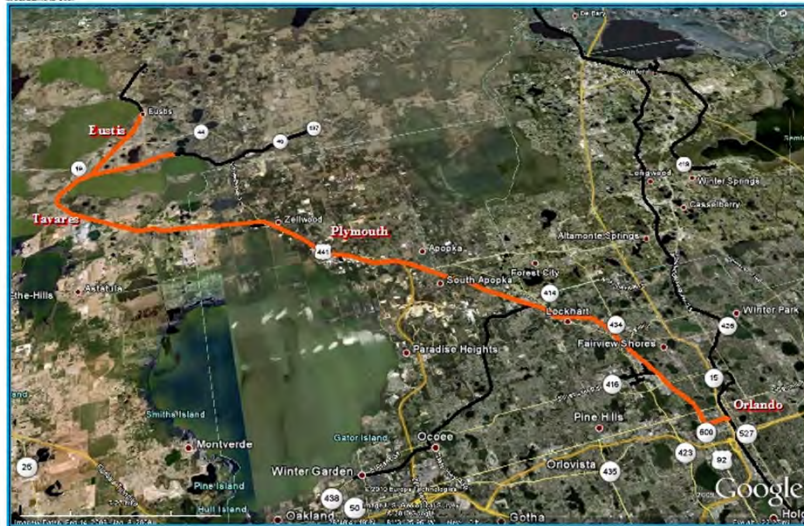
# Excursion Train – Tourism Development

- ❑ Requires improvements to Tavares-Mount Dora tracks
- ❑ Opportunities for excursions to Orlando, Winter Garden.



# PASSENGER RAIL INITIATIVE

## ORANGE BLOSSOM EXPRESS



- County Road
- State Road
- US Highway
- Interstate
- Turnpike
- Water Body
- Public Lands Managed by Federal Agency
- Public Lands Managed by State Agency
- Public Lands Managed by Local Agency



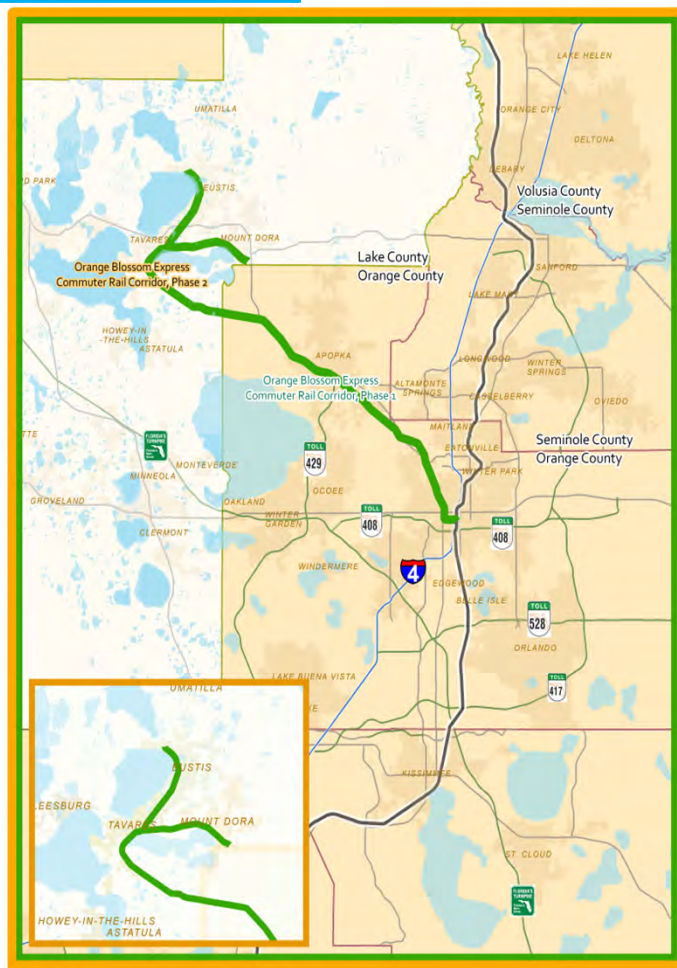
### TRANSPORTATION PLANNING AREA SUMTER AND LAKE COUNTY, FLORIDA



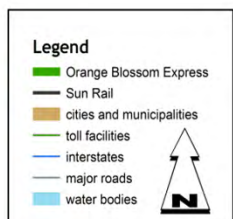
- Amtrak Station
- Proposed Service Limits
- Orange Blossom Express
- Existing or Active Railroad
- County Delineation

**DATE PREPARED:** 05/20/2010  
**DATE REVISED:** 05/20/2010  
**PROJECT NUMBER:** 05/20/2010  
**PROJECT TITLE:** Orange Blossom Express  
**PROJECT LOCATION:** Lake and Sumter Counties, Florida  
**PROJECT DESCRIPTION:** This project is a conceptual map showing the proposed Orange Blossom Express route through Lake and Sumter Counties, Florida. The map includes major roads, water bodies, and county boundaries. The proposed route is shown in orange, connecting Tavares, Mount Dora, Plymouth, and Orlando. The map also shows existing and active railroads in grey and county delineations in black. The project is part of the Lake-Sumter Metropolitan Planning Organization's Passenger Rail Initiative.





## Orange Blossom Express (US 441 Corridor)



## ❖ Passenger Rail

- The Orange Blossom Express is a proposed 35.5-mile Commuter Rail
- Lake County to downtown Orlando
- Existing Florida Central Railroad (FCEN) line
- Rail line is owned by CSX and leased to FCEN, a freight rail operator
- This project would feed the Sun Rail project.
- FDOT committed to funding 75% of Alternatives Analysis

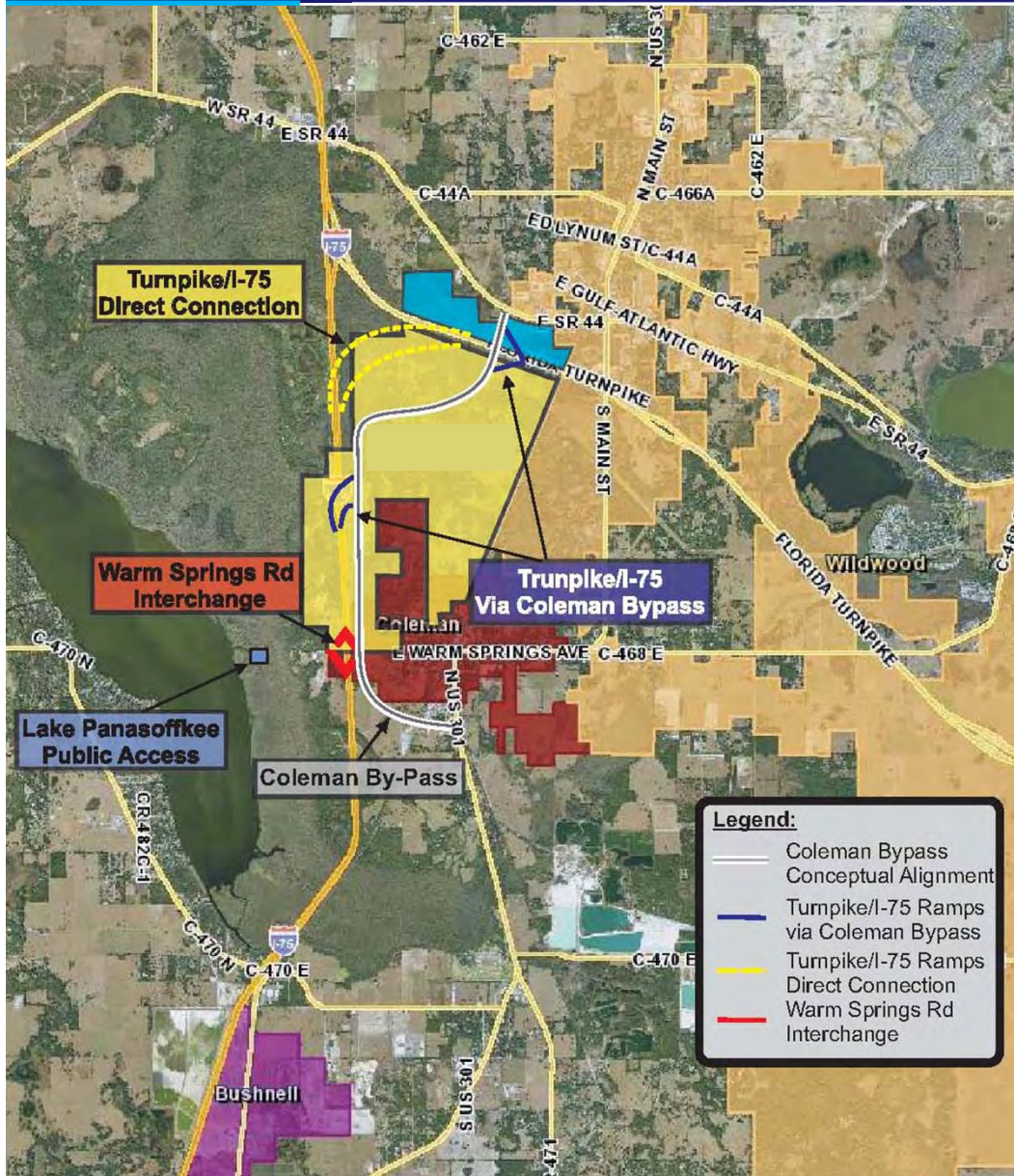
The Lake~Sumter MPO and MetroPlan Orlando have both identified this project as an LRTP transit priority

# Wellness Way





# Florida Crossroads Industrial Activity Center



- ❖ Major industrial activity center strategically located at the convergence of I-75, Turnpike, and CSX-S Line
- ❖ Planned new interchange on Florida's Turnpike
- ❖ Potential to generate 20,000 new, permanent jobs over the next 20 years
- ❖ Identified in the Comprehensive Economic Development Strategy as a Vital Project
- ❖ Approved by U.S. Dept. of Commerce, Economic Development Administration, making Federal funding available for needed infrastructure

# PROMOTING REGIONAL TRANSPORTATION PARTNERSHIPS



**1616 South 14th Street  
Leesburg, FL 34748  
(352) 315-0170  
LakeSumterMPO.com**

[www.lakesumtermpo.com](http://www.lakesumtermpo.com)