

Investing in Transportation to Spark Economic Development

MOUNT DORA CHAMBER BREAKFAST

AUGUST 14, 2013



T.J. Fish, AICP
Executive Director

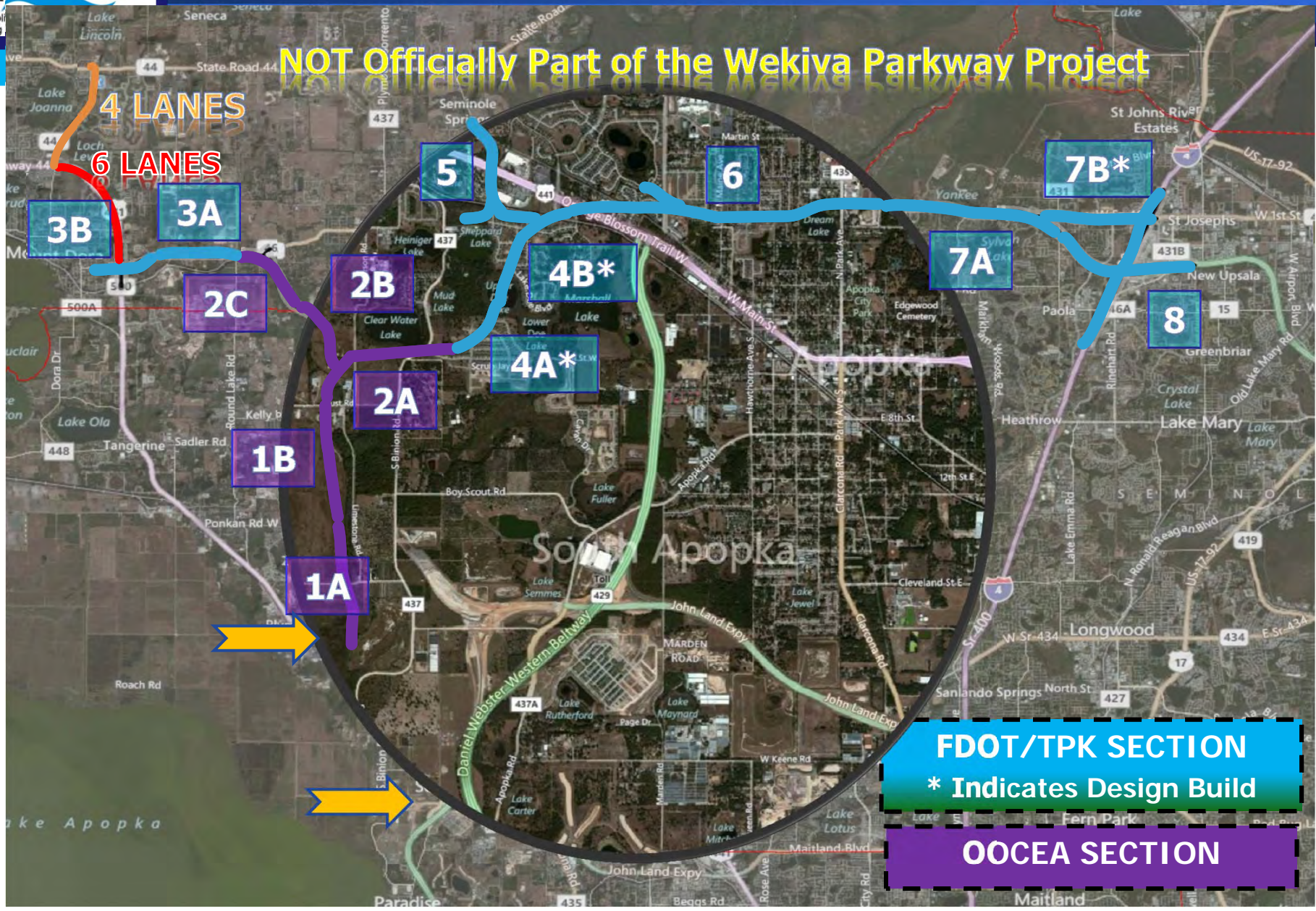
WEKIVA PARKWAY PROJECT

Project Construction Sections



PROJECT CONSTRUCTION SECTIONS

NOT Officially Part of the Wekiva Parkway Project



FDOT/TPK SECTION

* Indicates Design Build

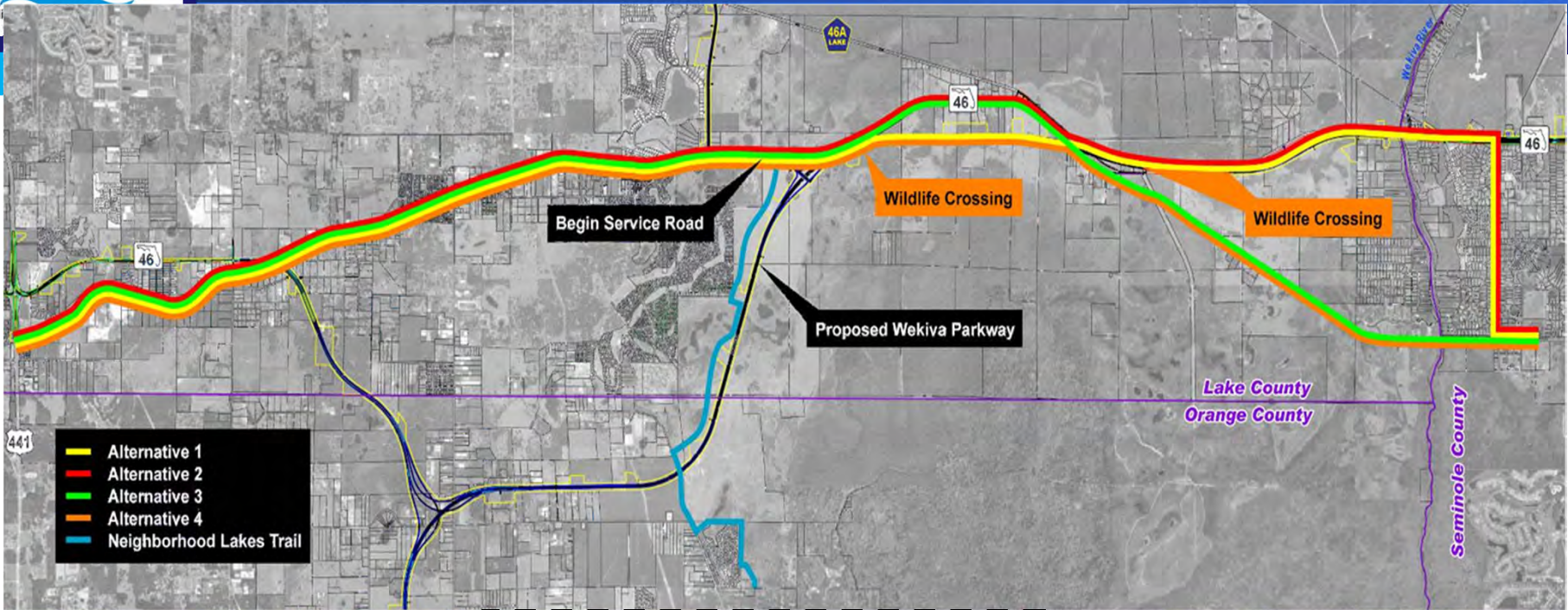
OOCEA SECTION

WEKIVA PARKWAY PROJECT

Project Construction Sections

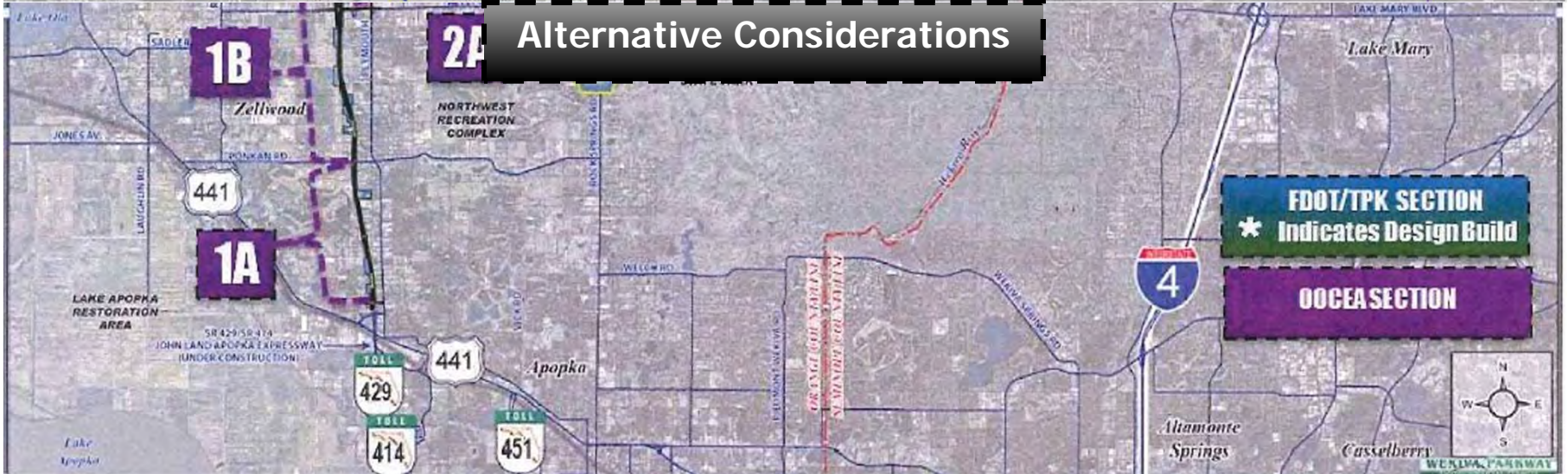


WEKIVA PARKWAY TRAILS

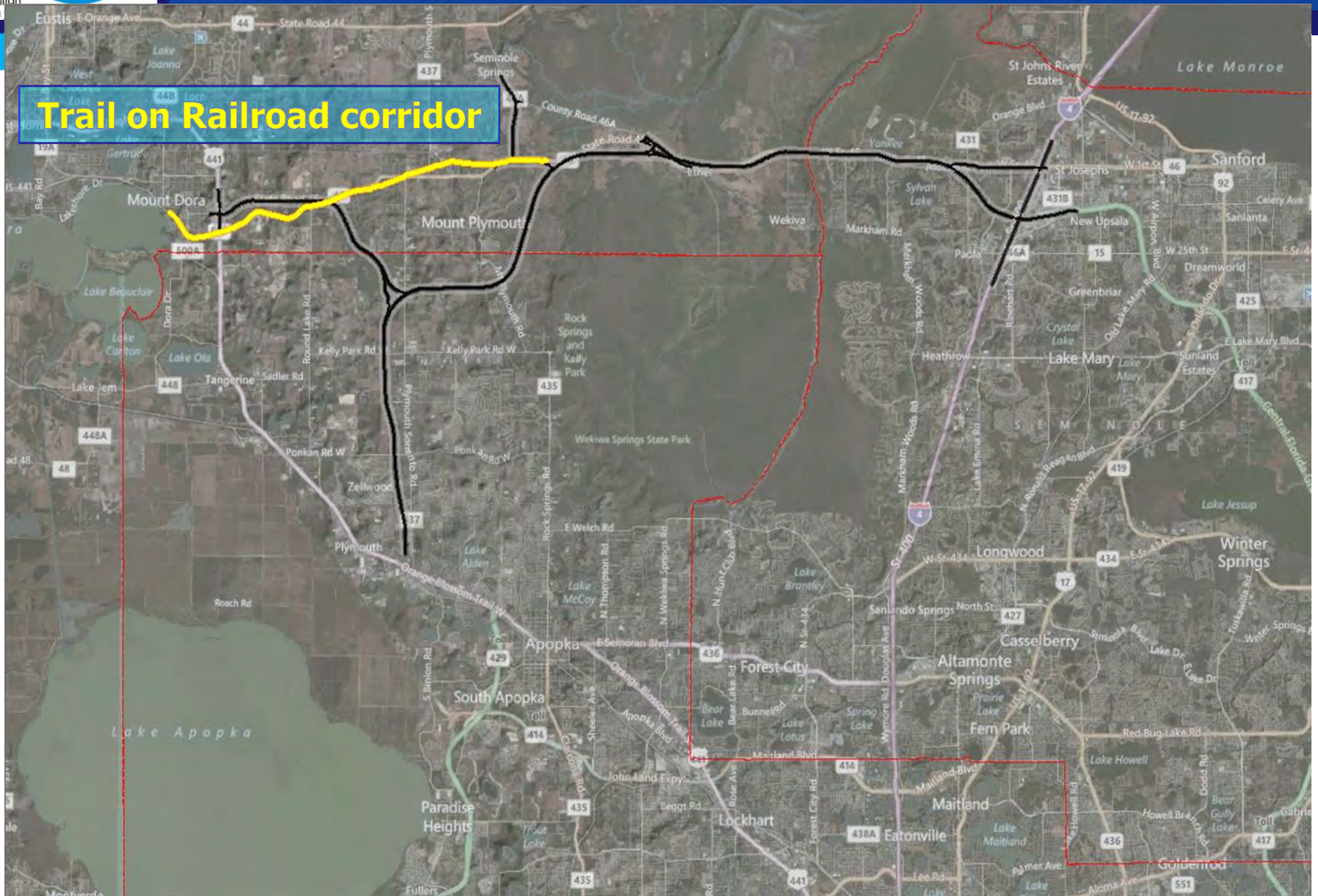


- Alternative 1
- Alternative 2
- Alternative 3
- Alternative 4
- Neighborhood Lakes Trail

Alternative Considerations



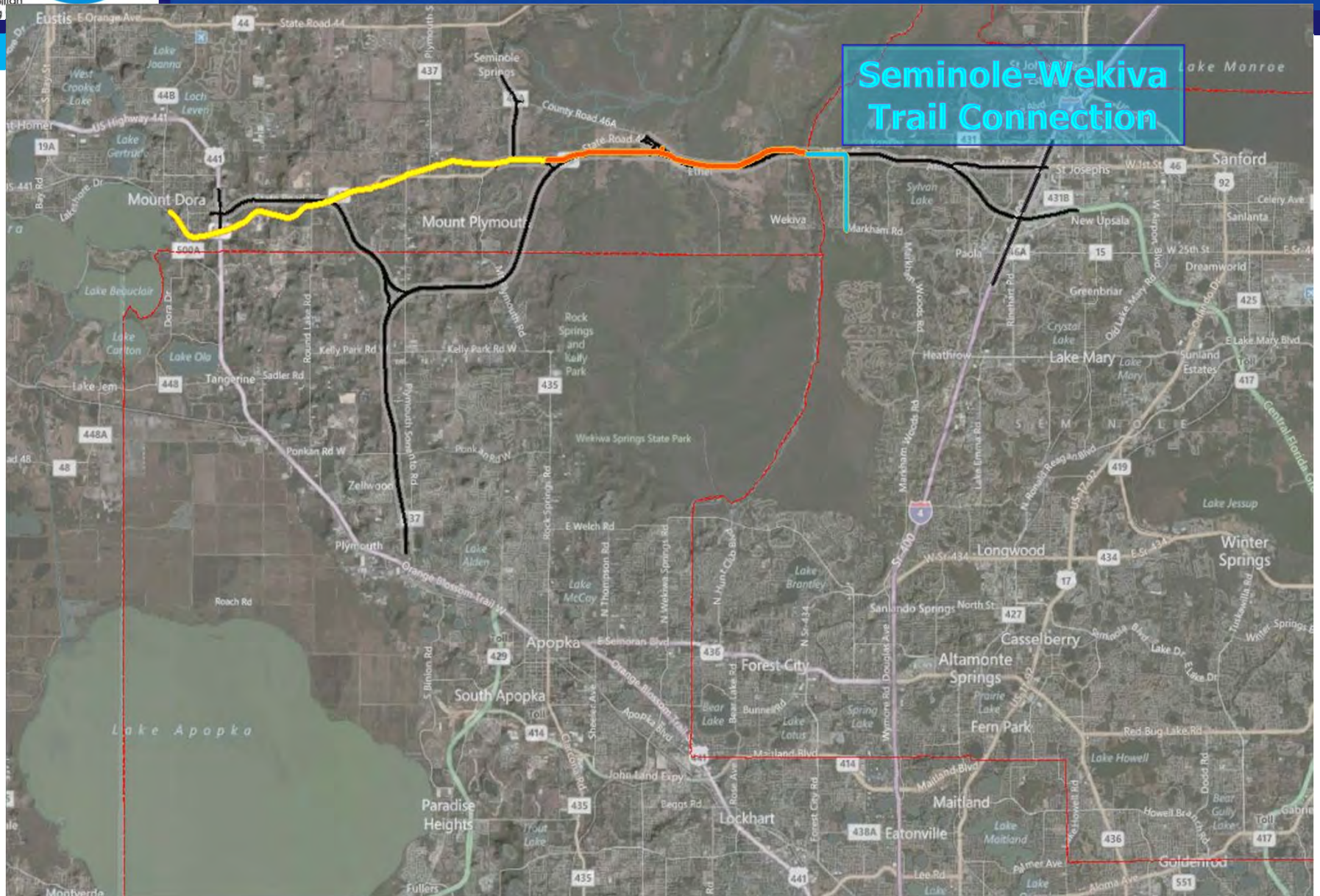
WEKIVA PARKWAY TRAILS



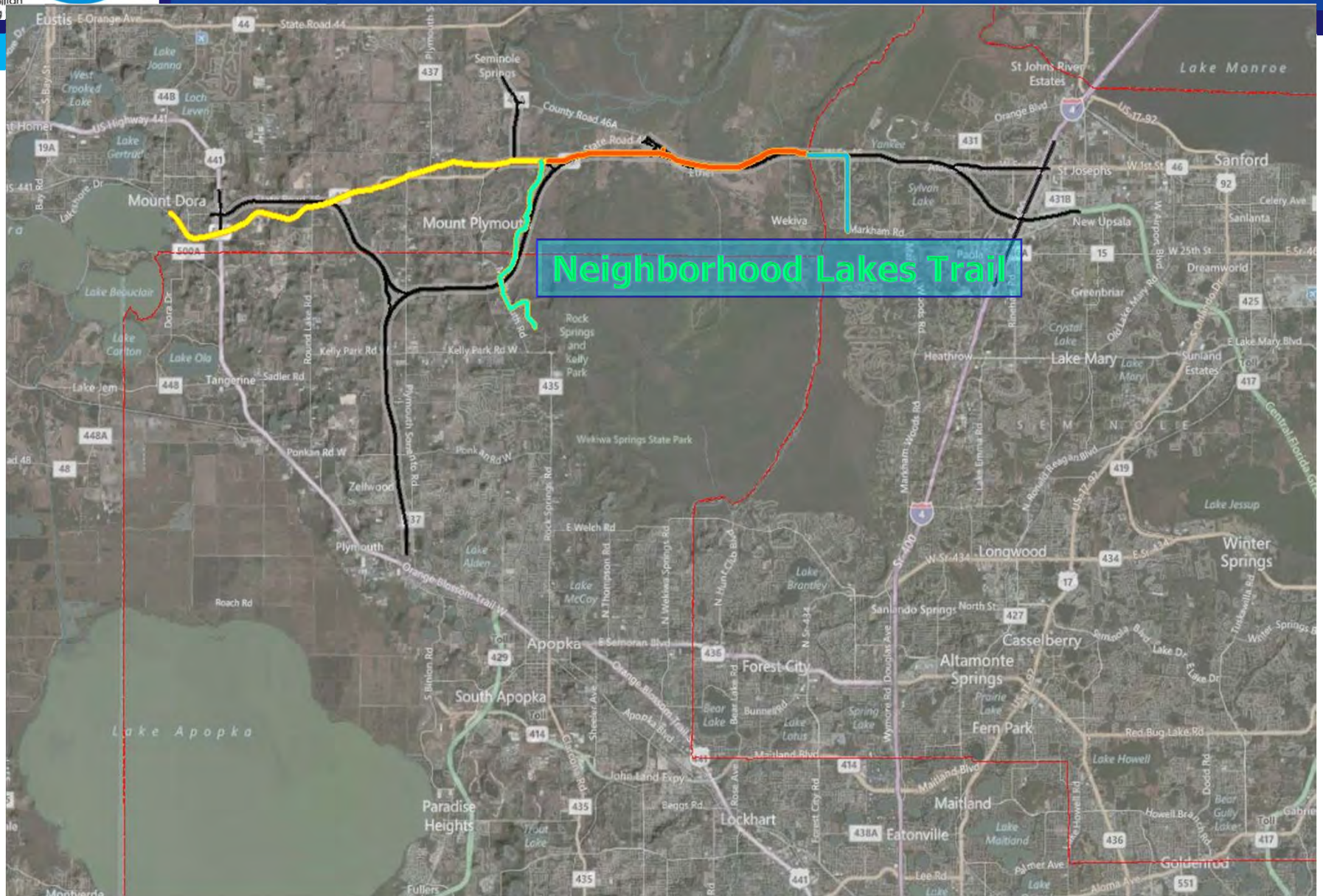
WEKIVA PARKWAY TRAILS



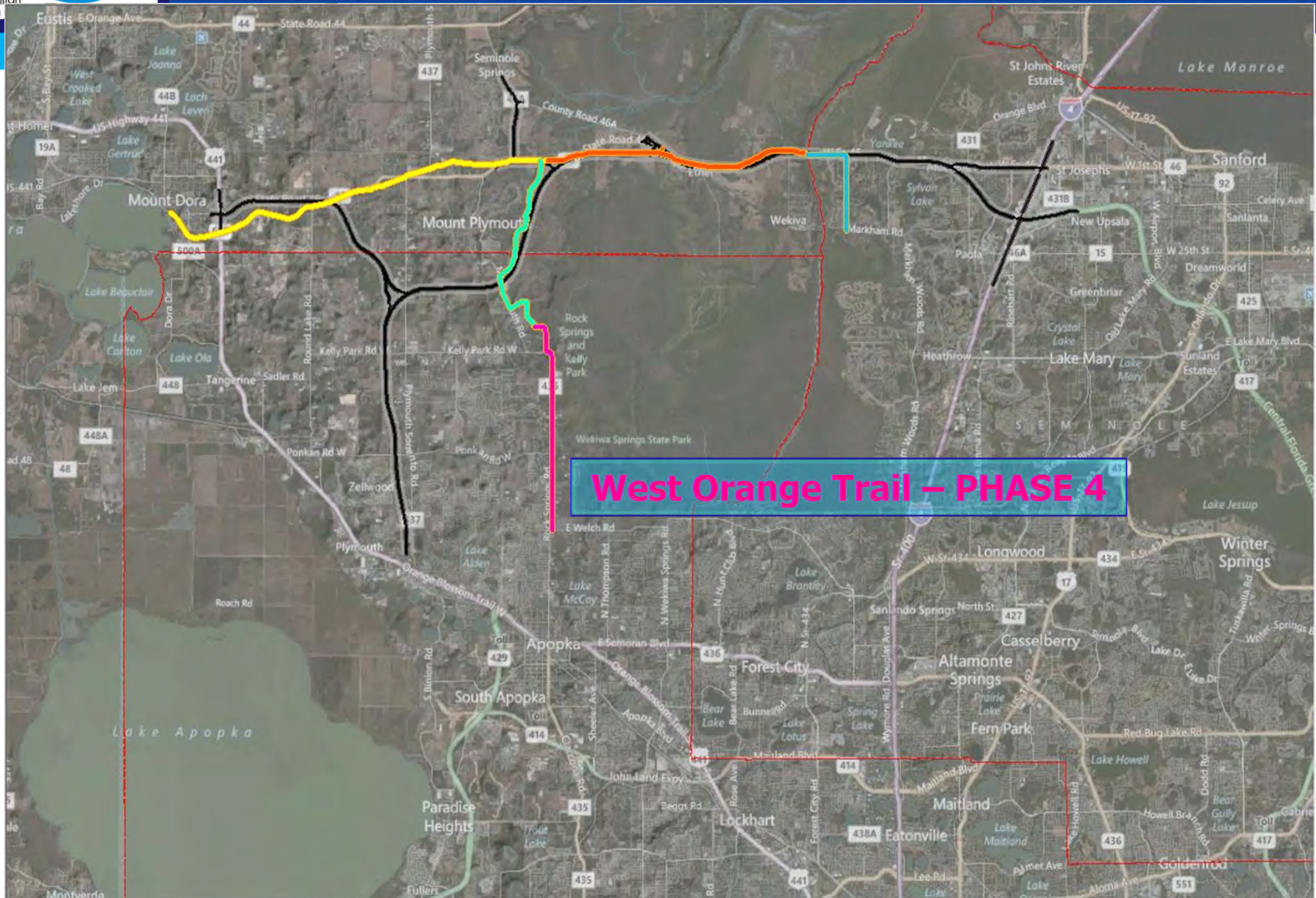
WEKIVA PARKWAY TRAILS



WEKIVA PARKWAY TRAILS

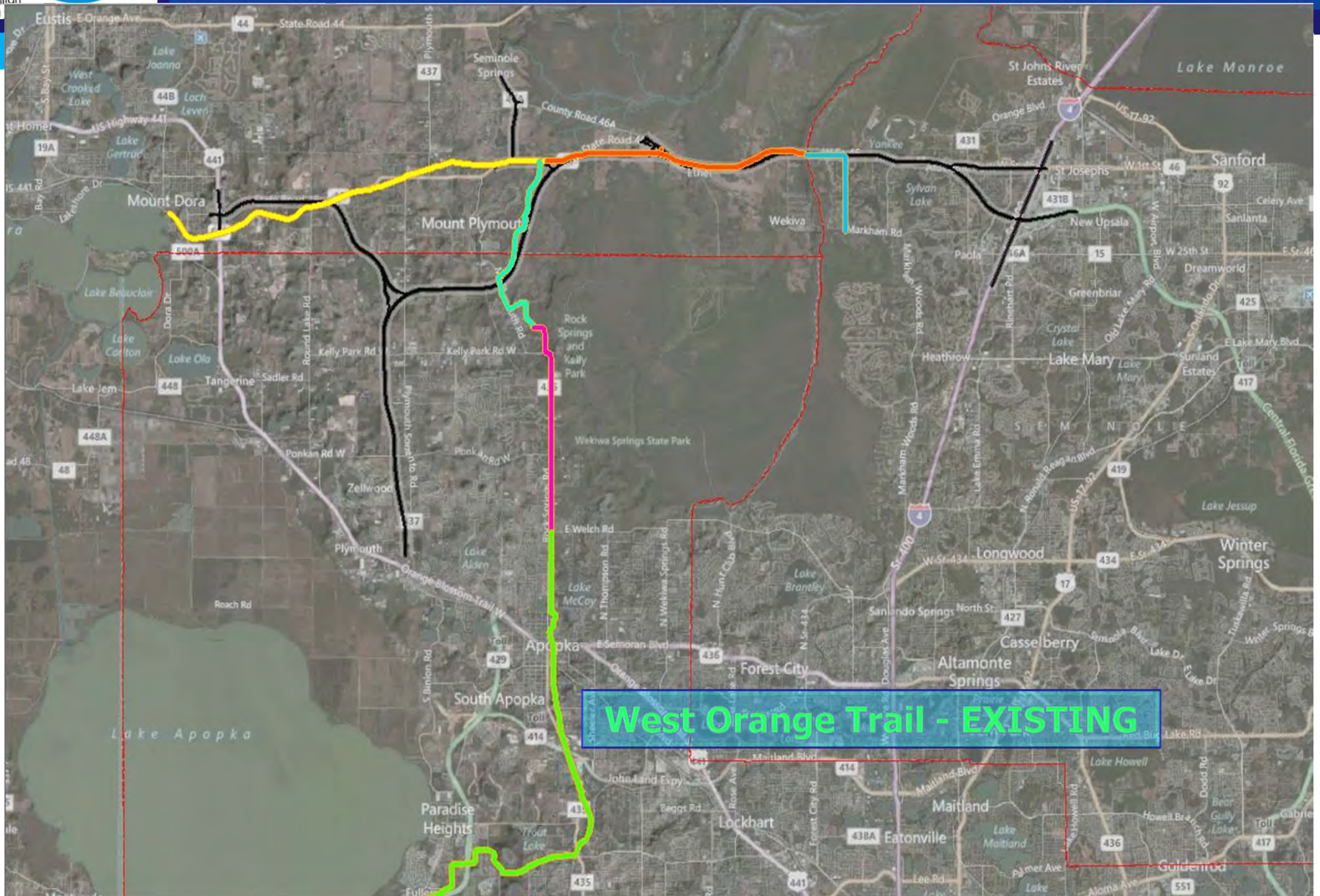


WEKIVA PARKWAY TRAILS

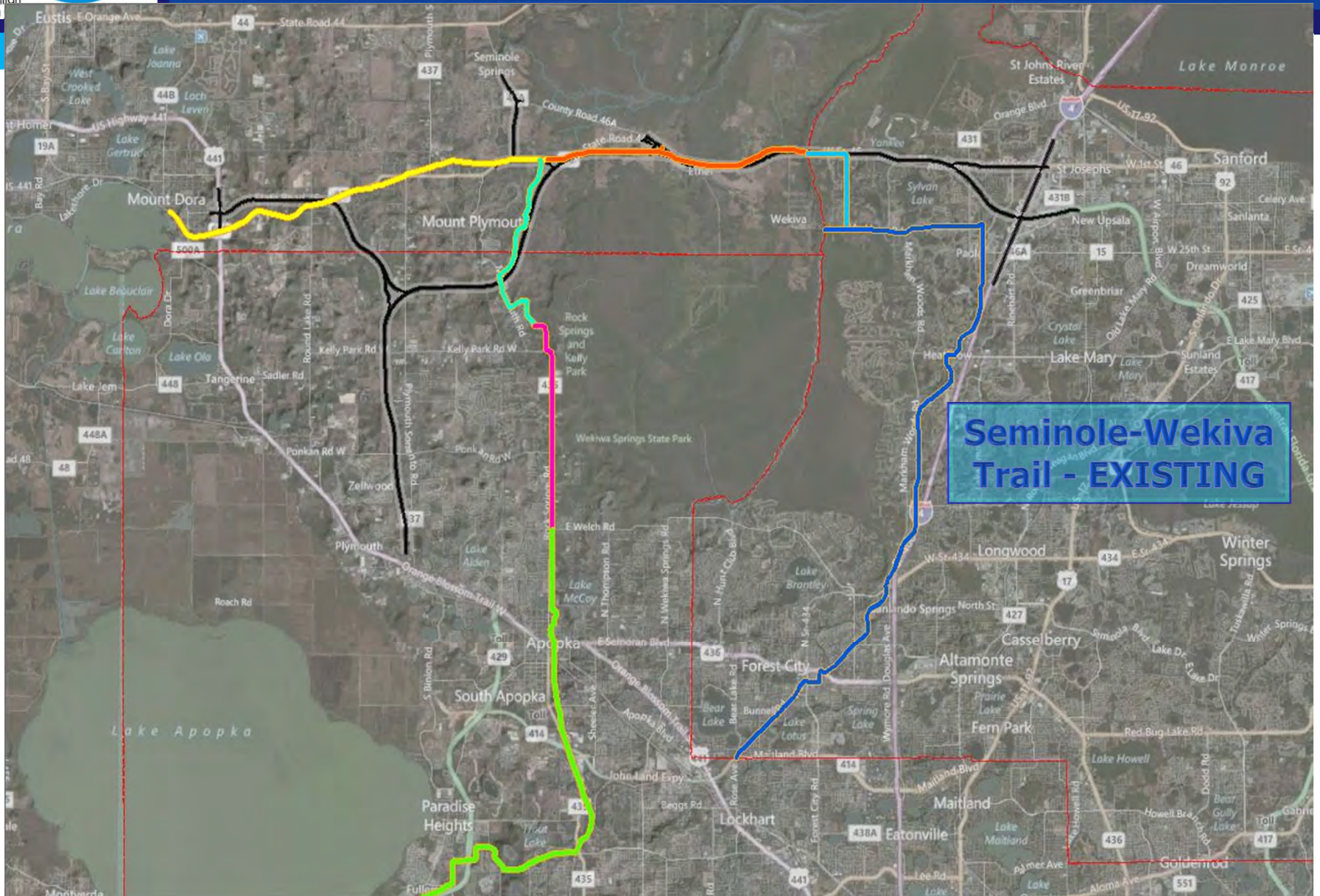


West Orange Trail – PHASE 4

WEKIVA PARKWAY TRAILS



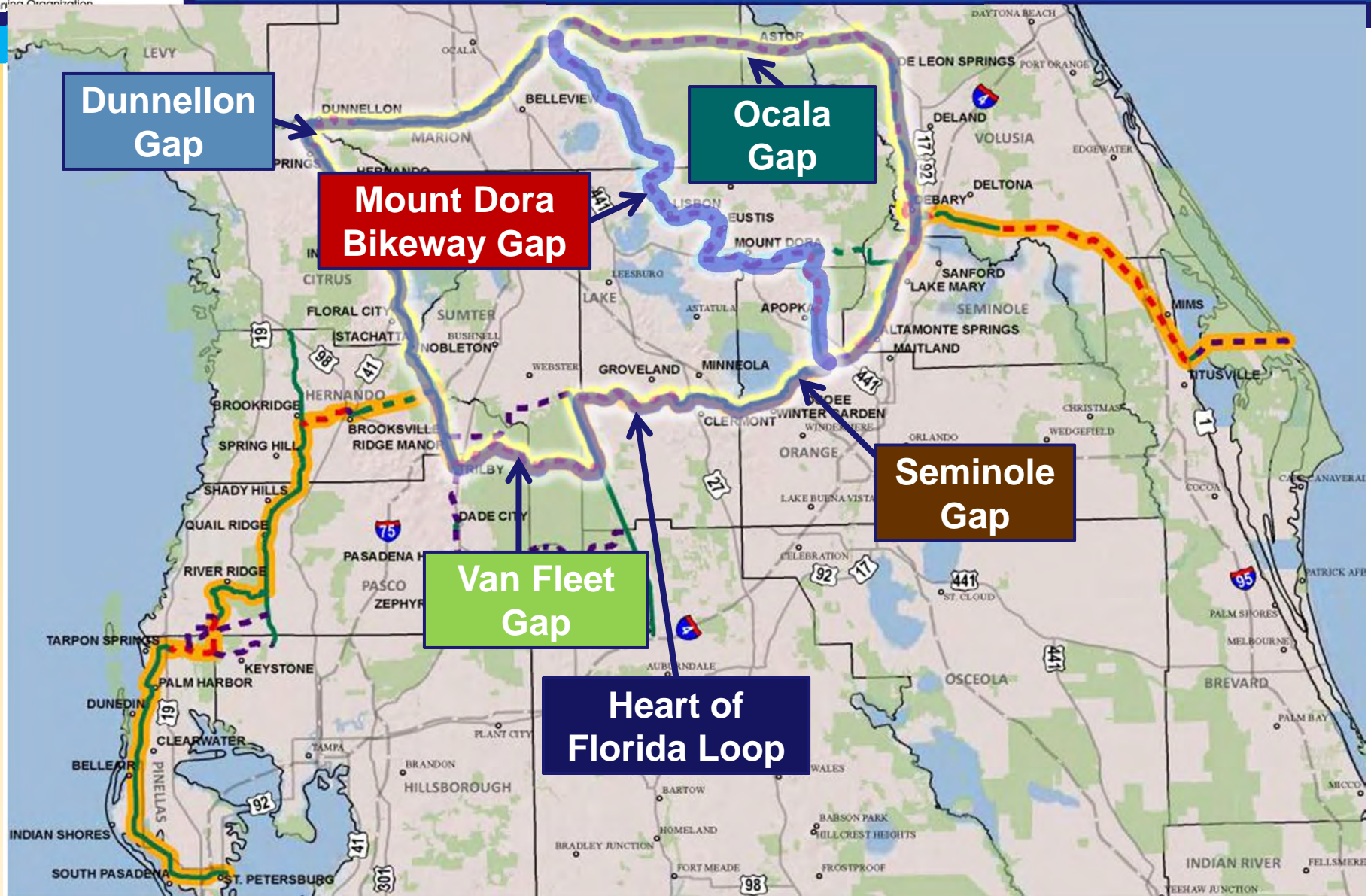
WEKIVA PARKWAY TRAILS



WEKIVA PARKWAY TRAILS

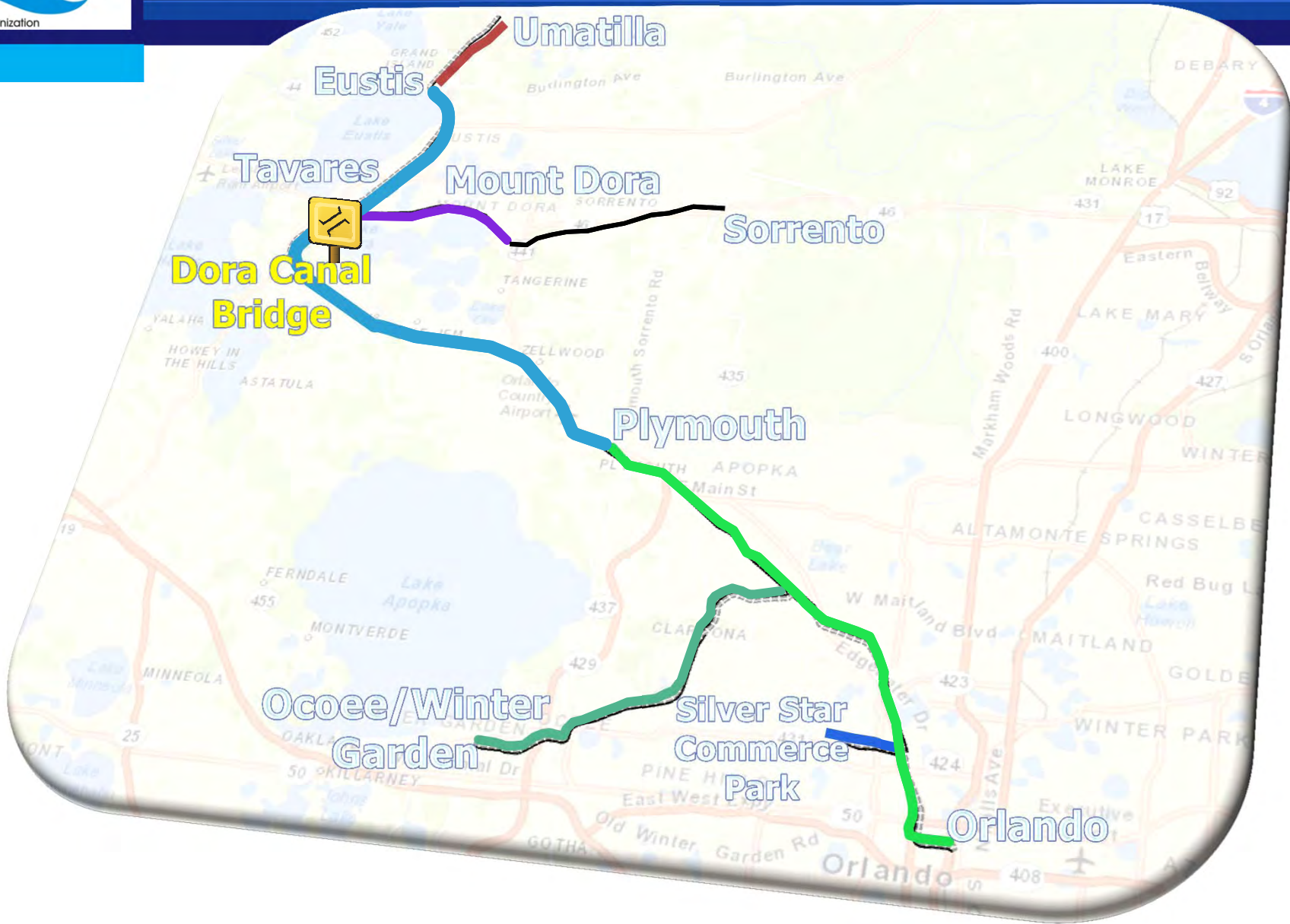


Trail Gaps





RAIL IMPROVEMENTS INITIATIVE



Excursion Train – Tourism Development

- ❑ Requires improvements to Tavares-Mount Dora tracks
- ❑ Opportunities for excursions to Orlando, Winter Garden.



VIEW/PRINT Project Map at:
www.LakeSumterMPO.com

- Maps
- Map Galleries
- Regionally Significant Projects & Corridors

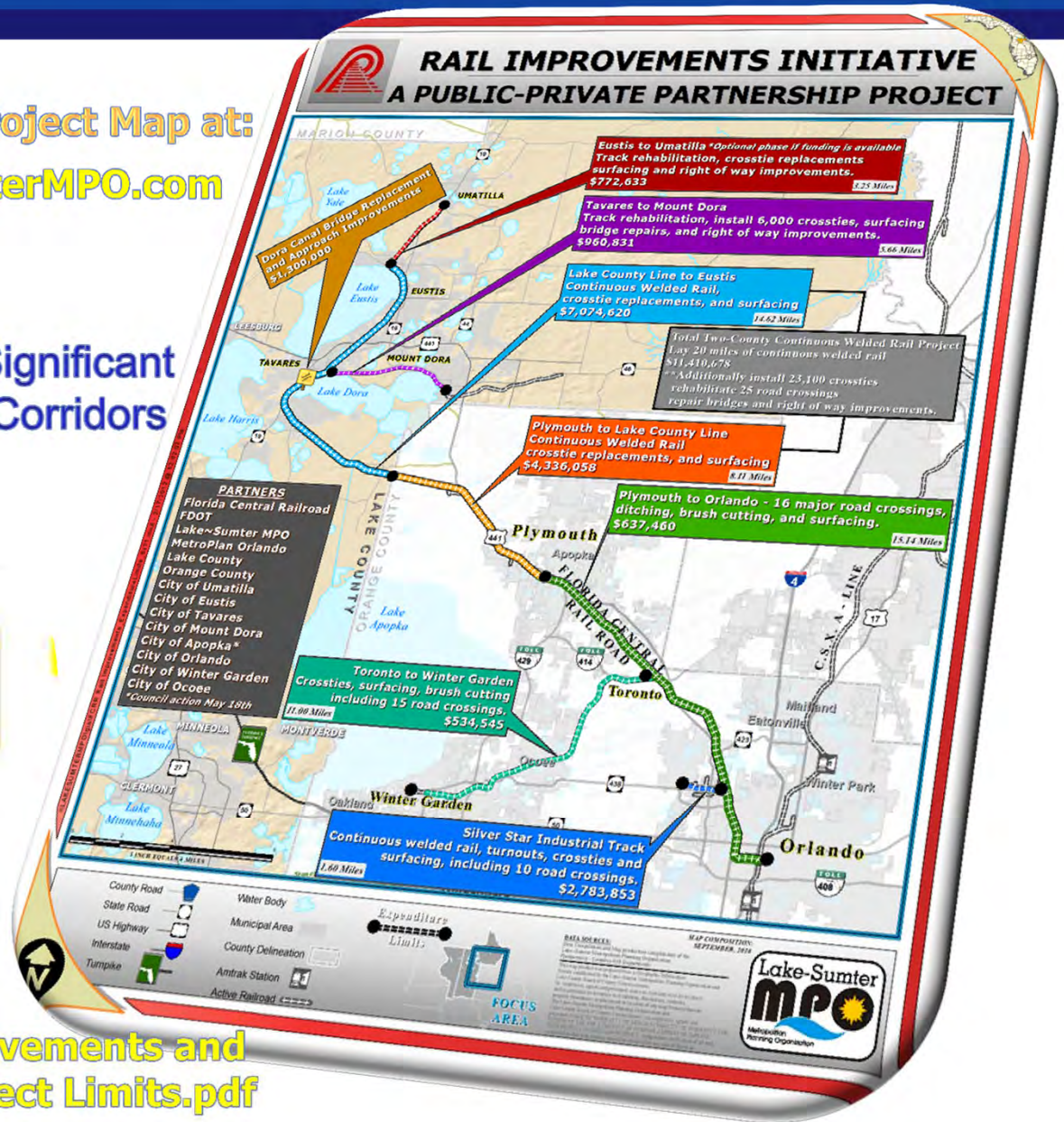
- Home
- About Lake-Sumter MPO
- Contact MPO
- Links
- Calendar of Events
- MPO Board & Committees
- Maps**
- News Releases
- Newsletter
- TRANSPORTATION 2035
- Planning Documents
- Public Notices
- Regional Initiatives
- Technical Resources
- Roadway Projects
- Search
- Transit
- Transportation Concurrency
- Transportation Studies/ETDM
- Workshops & Forums

Visit Us on Facebook
Follow us on Twitter

Map Galleries

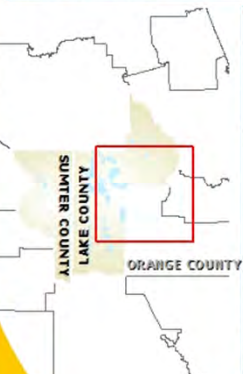
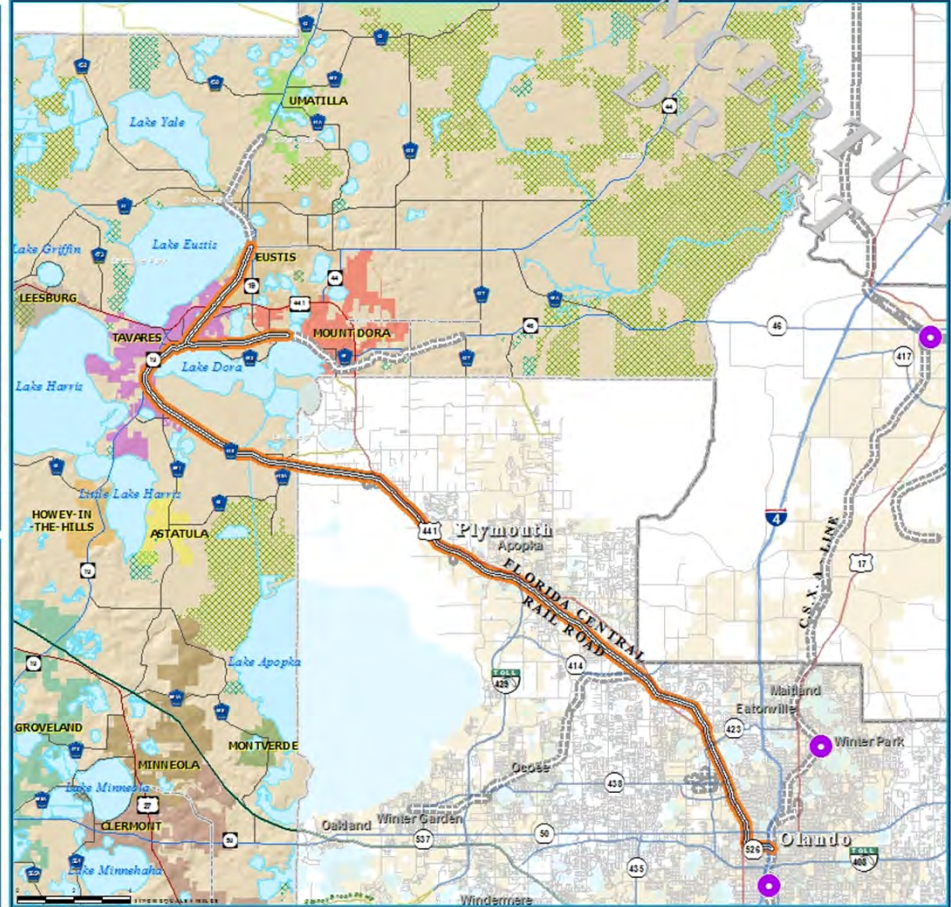
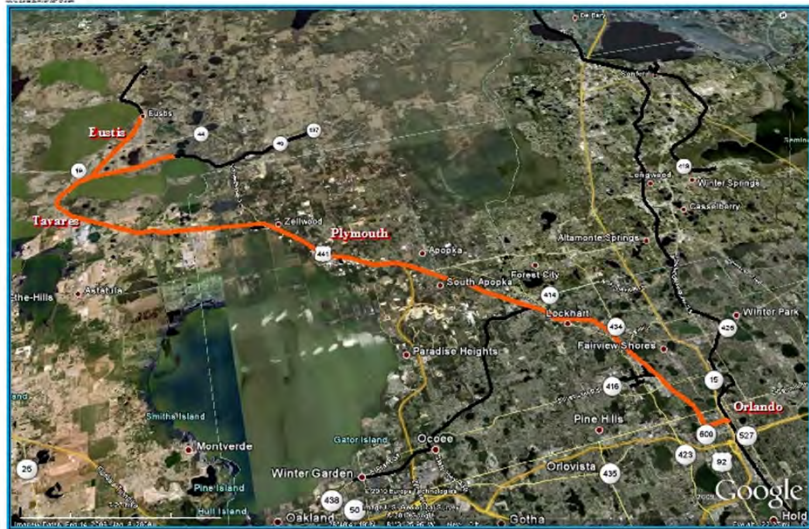


FCRR Rail Improvements and
Expenditure Project Limits.pdf



PASSENGER RAIL INITIATIVE

ORANGE BLOSSOM EXPRESS



- County Road
- State Road
- US Highway
- Interstate
- Turnpike
- Water Body
- Public Lands Managed by Federal Agency
- Public Lands Managed by State Agency
- Public Lands Managed by Local Agency



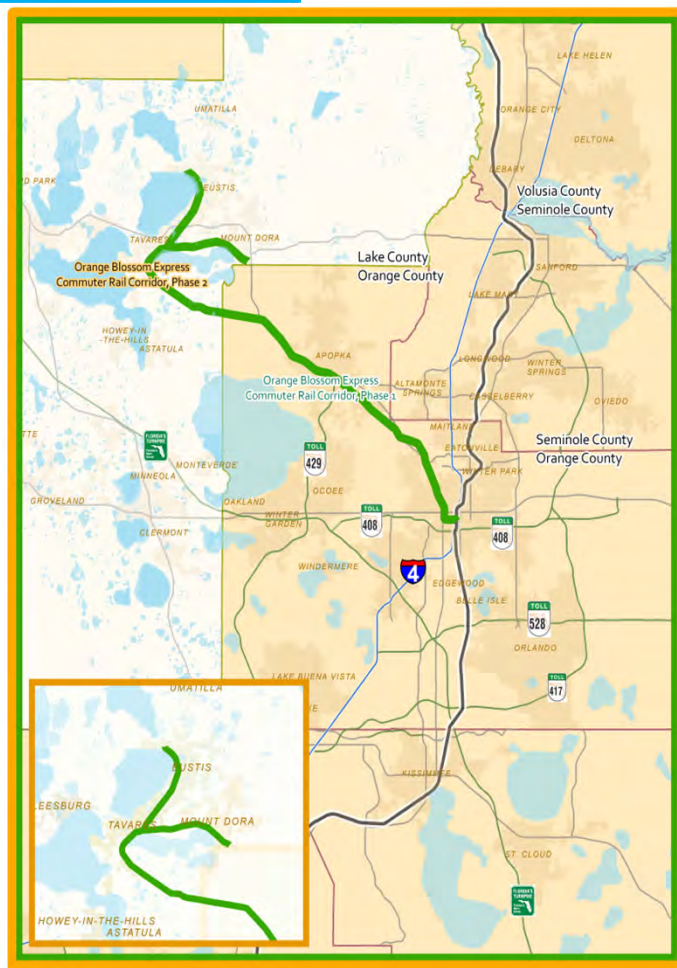
TRANSPORTATION PLANNING AREA SUMTER AND LAKE COUNTY, FLORIDA



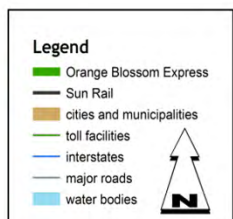
- Amtrak Station
- Proposed Service Limits
- Orange Blossom Express
- Existing or Active Railroad
- County Delineation

DATE PREPARED: 05/20/2010
DATE REVISED: 05/20/2010
PROJECT: Orange Blossom Express
CLIENT: Lake and Sumter Counties, Florida
PREPARED BY: Lake-Sumter Metropolitan Planning Organization
APPROVED BY: [Signature]
SCALE: Not to Scale
PROJECT NO.: 05/20/2010
PROJECT NAME: Orange Blossom Express
PROJECT LOCATION: Lake and Sumter Counties, Florida
PROJECT STATUS: Conceptual
PROJECT CONTACT: [Name]
PROJECT PHONE: [Phone Number]
PROJECT FAX: [Fax Number]
PROJECT EMAIL: [Email Address]





Orange Blossom Express (US 441 Corridor)



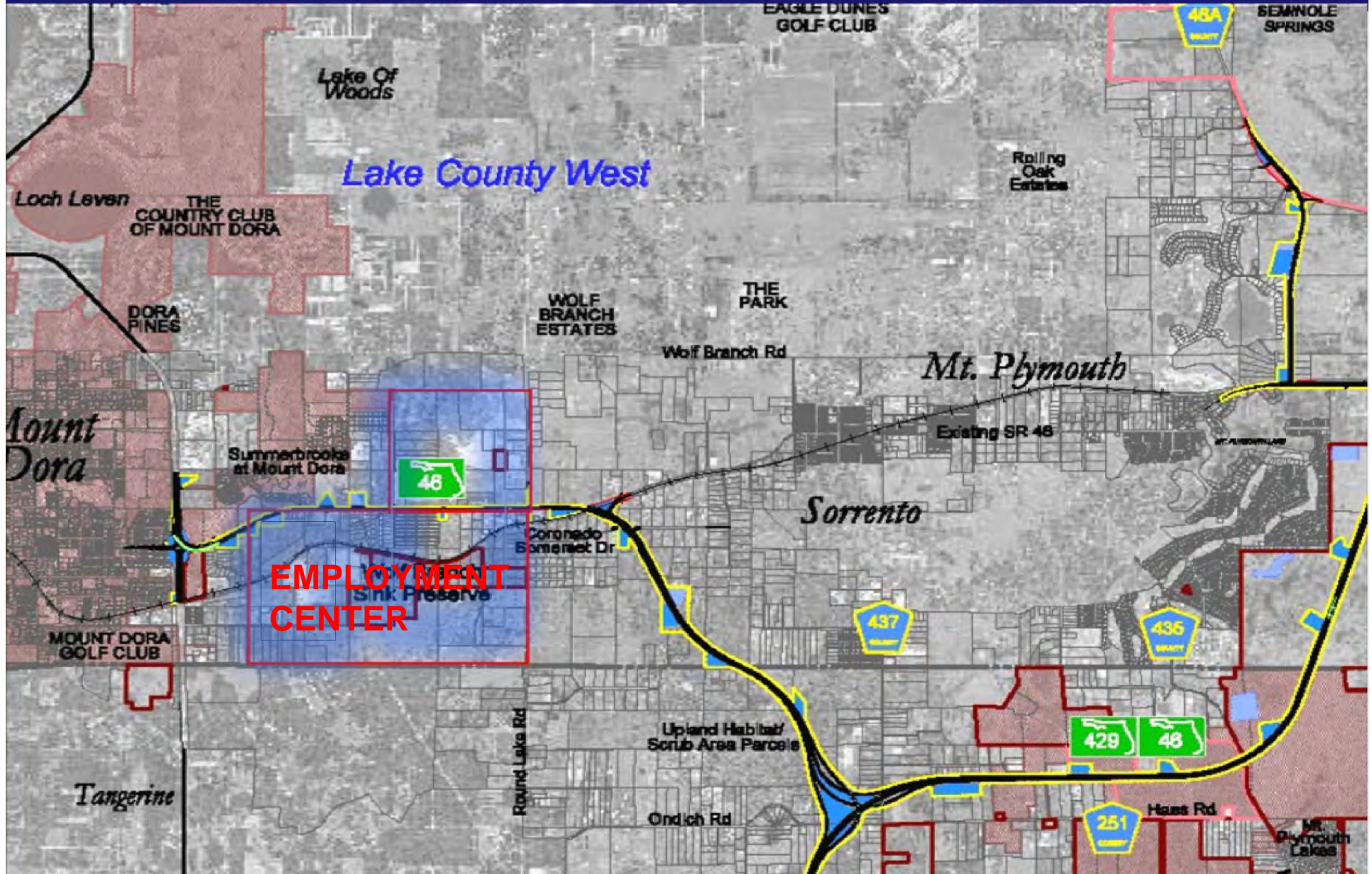
5 2.5 0 5 10 Miles

❖ Passenger Rail

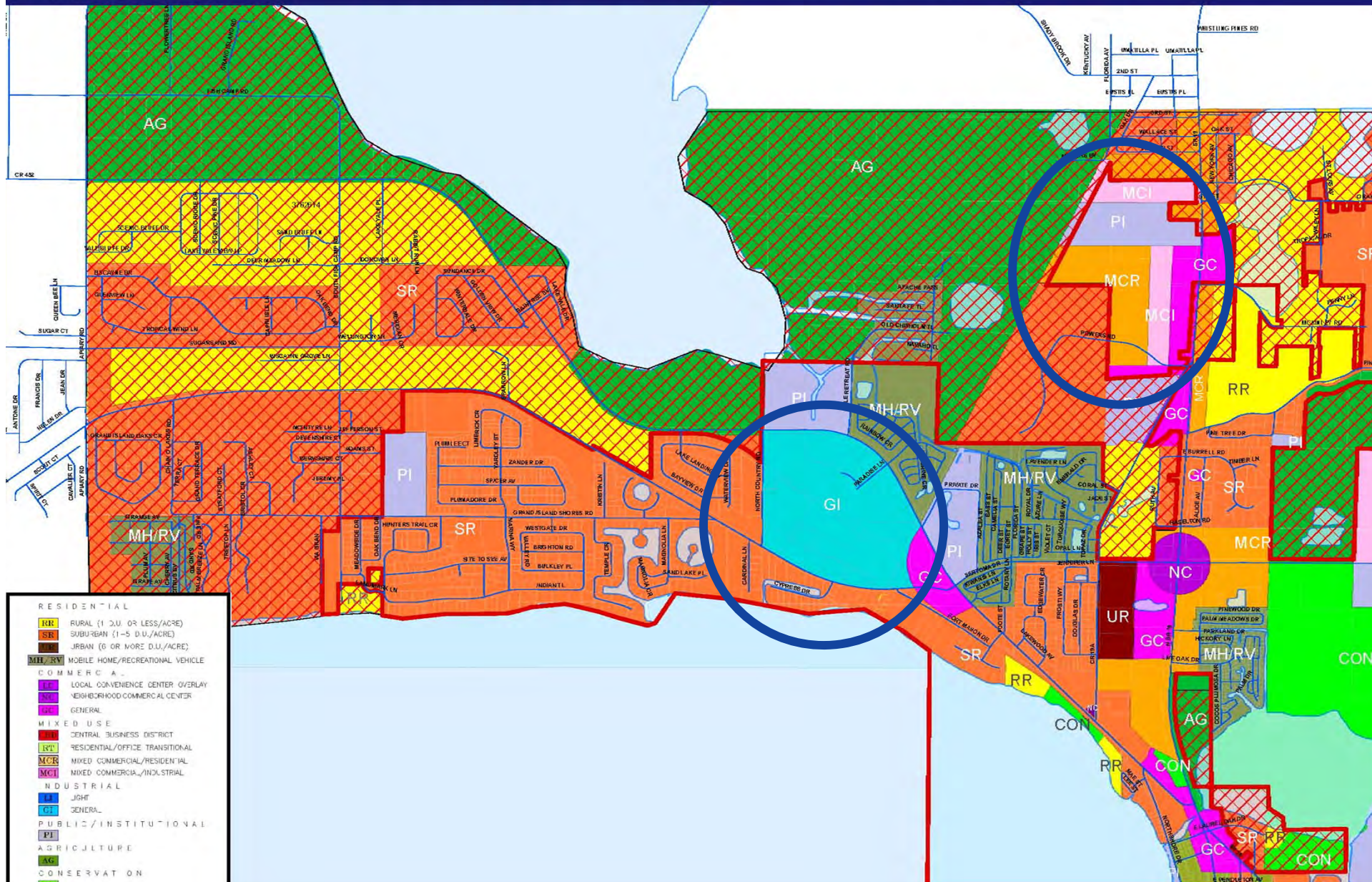
- The Orange Blossom Express is a proposed 35.5-mile Commuter Rail
- Lake County to downtown Orlando
- Existing Florida Central Railroad (FCEN) line
- Rail line is owned by CSX and leased to FCEN, a freight rail operator
- This project would feed the Sun Rail project.
- FDOT committed to funding 75% of Alternatives Analysis

The Lake~Sumter MPO and MetroPlan Orlando have both identified this project as an LRTP transit priority

MOUNT DORA EMPLOYMENT CENTER



POWERS DAIRY SITE AND EXISTING INDUSTRIAL PARK IN EUSTIS



TAVARES ECONOMIC DEVELOPMENT STRATEGY



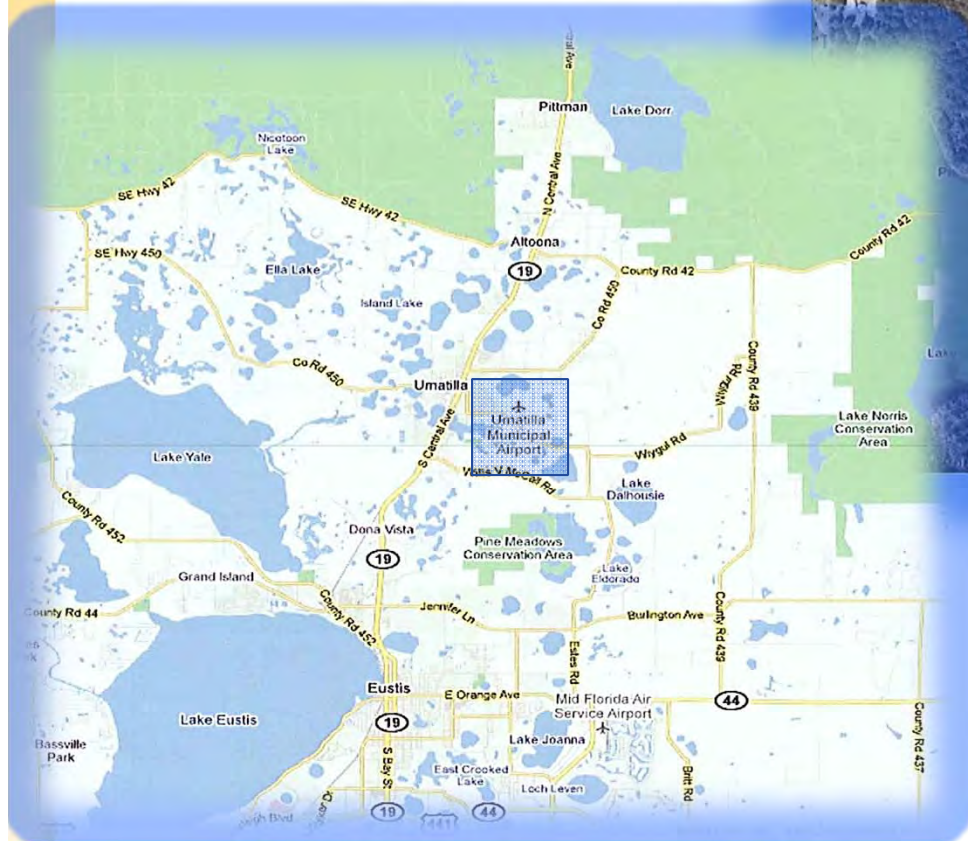
TAVARES FREIGHT VILLAGE

- ❖ 50 Acre Freight Village adjacent to the FCEN line on the south side of city
- ❖ Strategically located planned major industrial activity center
- ❖ Positions the City to capitalize on rail corridor for purposes of economic and community development

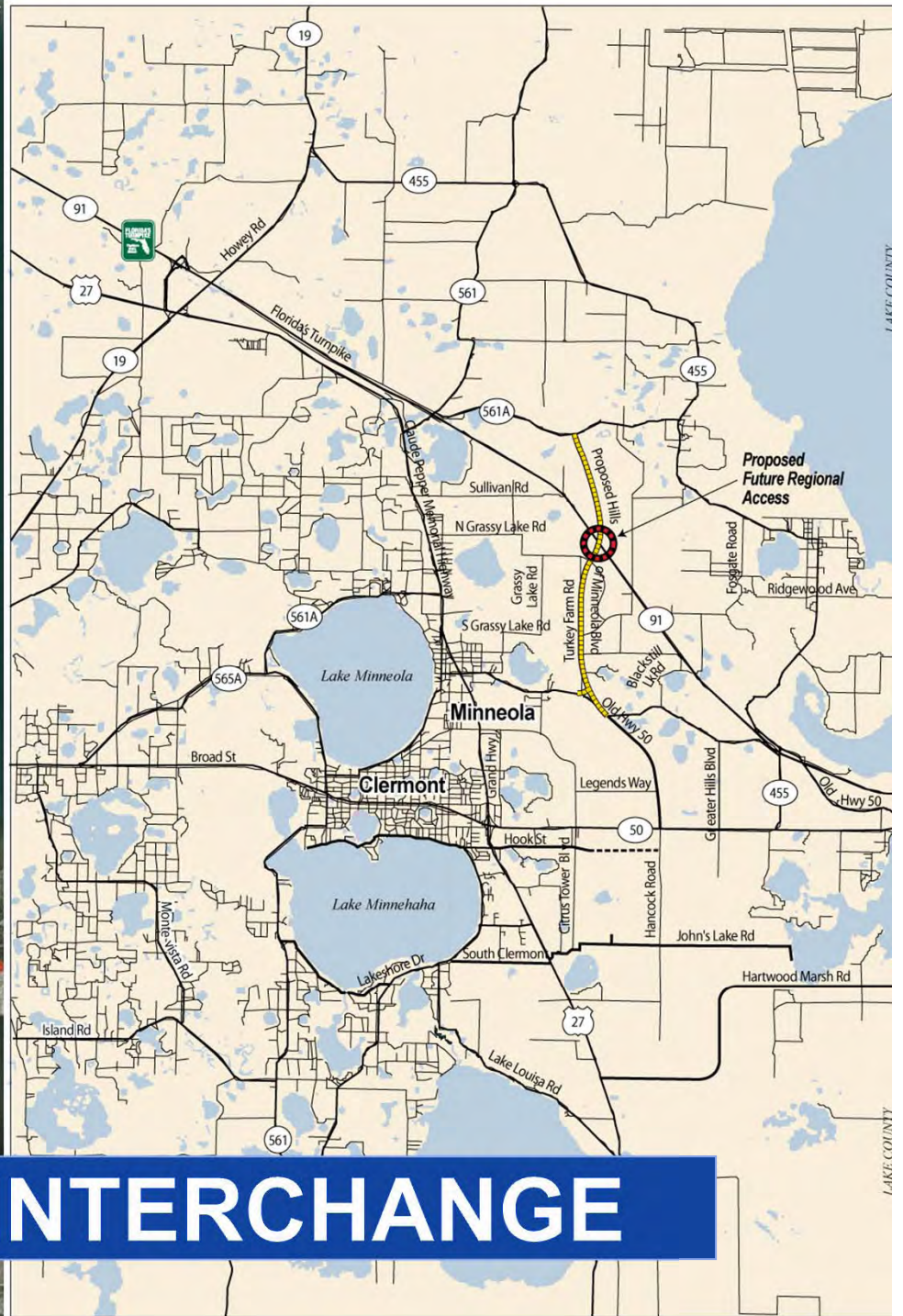
LEESBURG INTERNATIONAL AIRPORT



Umatilla Municipal Airport

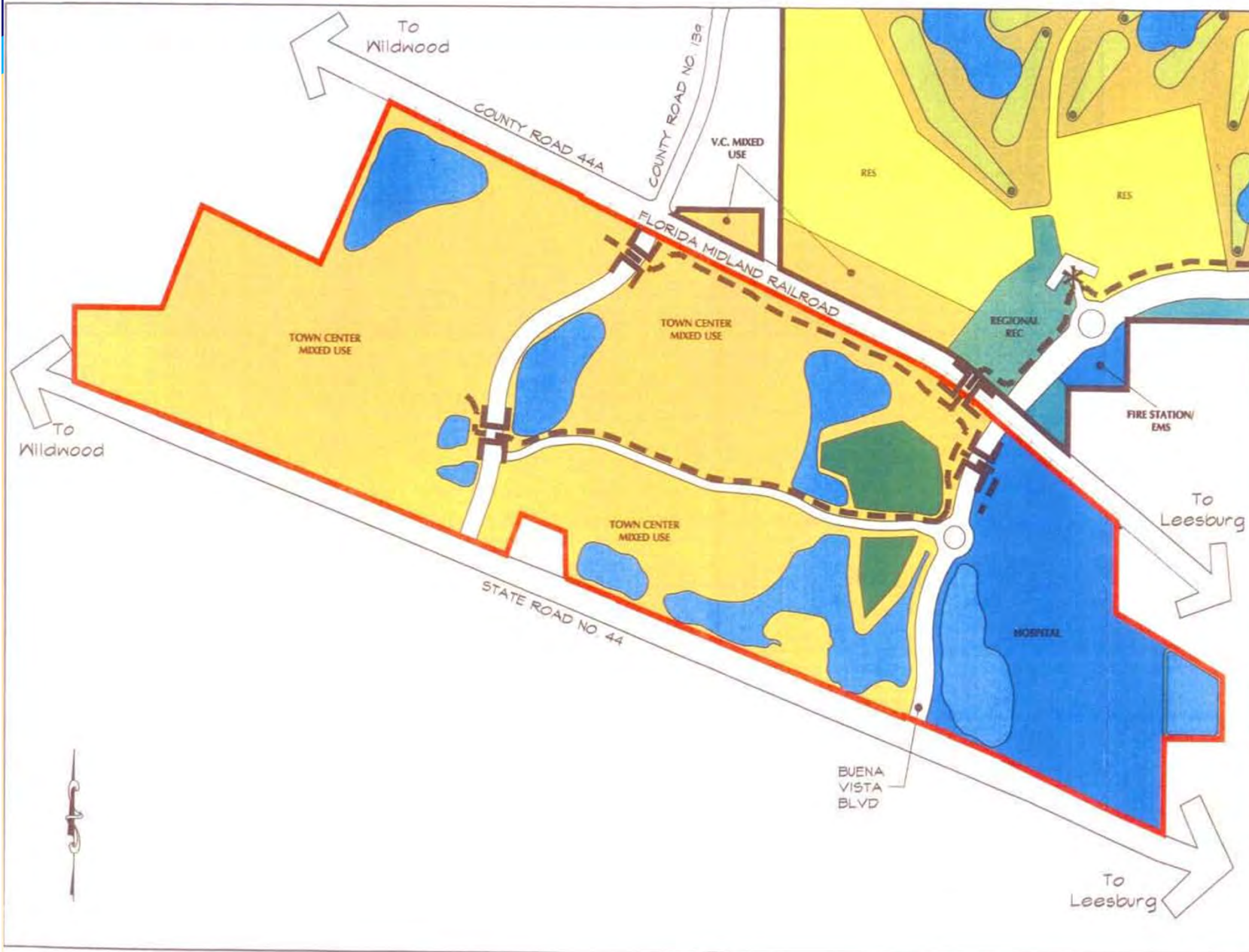


Source: Umatilla, U.S. Geological Survey, Lake County, TerraMetrics, Map data © 2011 Google



MINNEOLA INTERCHANGE

Brownwood



LEGEND

- VILLAGES OF SUMTER
- SUMTER COUNTY
- PROPERTY BOUNDARY
- VILLAGES OF SUMTER
- CITY OF WILDWOOD
- PROPERTY BOUNDARY
- R.O.V.
- RESIDENTIAL
- MIXED USE:
May include one or more of the following:
Retail, Service, Office, Hotel, Recreation,
Performing Arts, Residential, Institutional
- HOSPITAL / FIRE STATION / EMS
- REGIONAL / VILLAGE REC CENTER
- GOLF ROUGH
- GOLF GREENS/TEES/FAIRWAYS
- STORMWATER
- BUFFER
- PETLAND
- GATE HOUSE
- TUNNEL
- TRANSPORTATION TRAIL

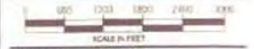
THE VILLAGES OF
SUMTER D.R.I.
THIRD SUBSTANTIAL
DEVIATION
CITY OF WILDWOOD
AUGUST 2007

MASTER
DEVELOPMENT
PLAN



1020 Lake Sumter Landing
The Villages, Florida 32162

FRANKE BARLEY & ASSOCIATES, INC.
ENGINEERS & SURVEYORS
PLANNERS
1020 Lake Sumter Landing
The Villages, Florida 32162
4400 N.E. 83rd Road Wildwood, Florida 34785
(352) 748-3128



Job number	S21141.1350
File name	MAP H
Date	12-06-06
Drawn by	KMK
Checked by	SRV
Revisions	11-29-07

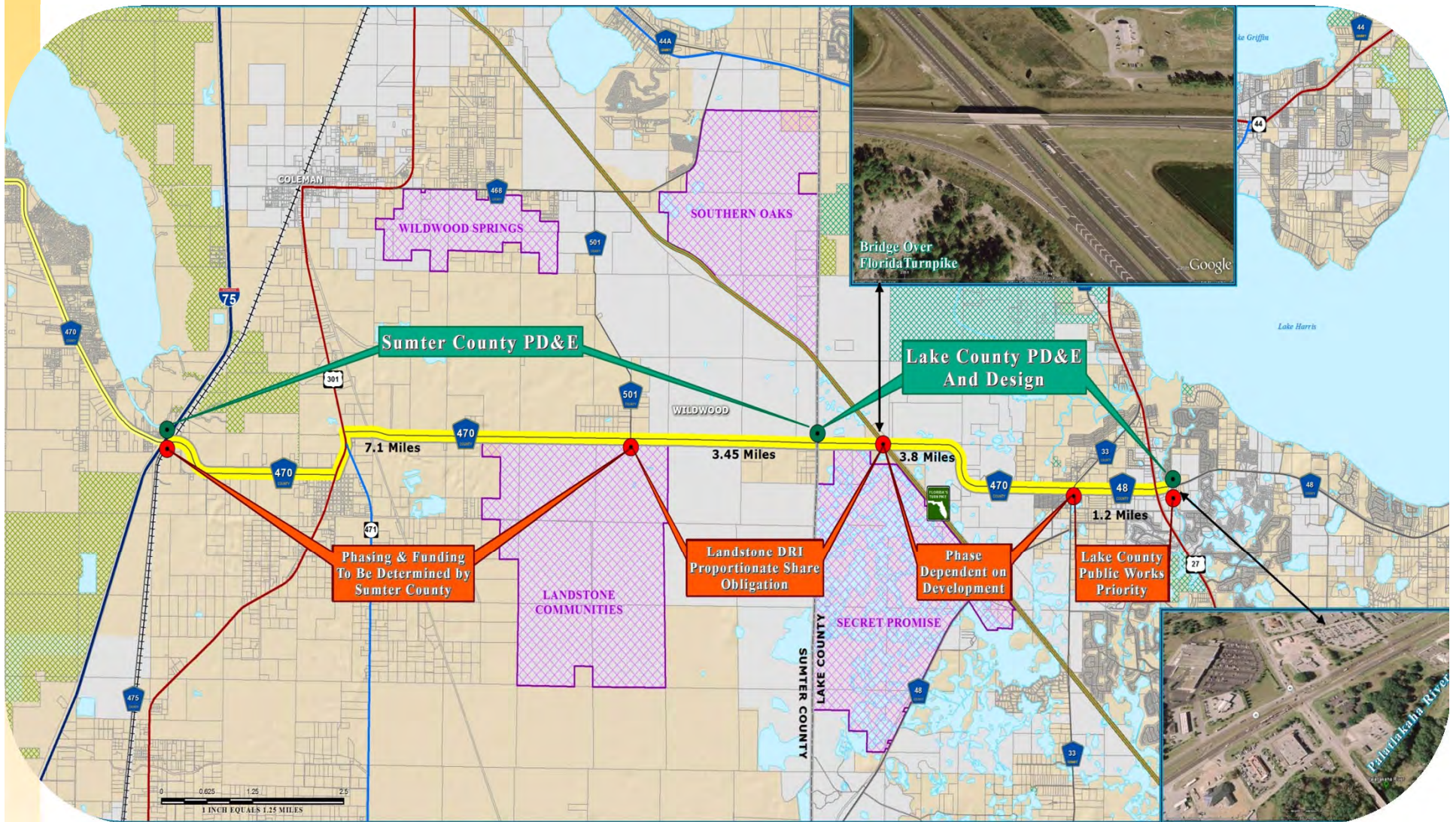
MAP H-2

Florida Crossroads Industrial Activity Center



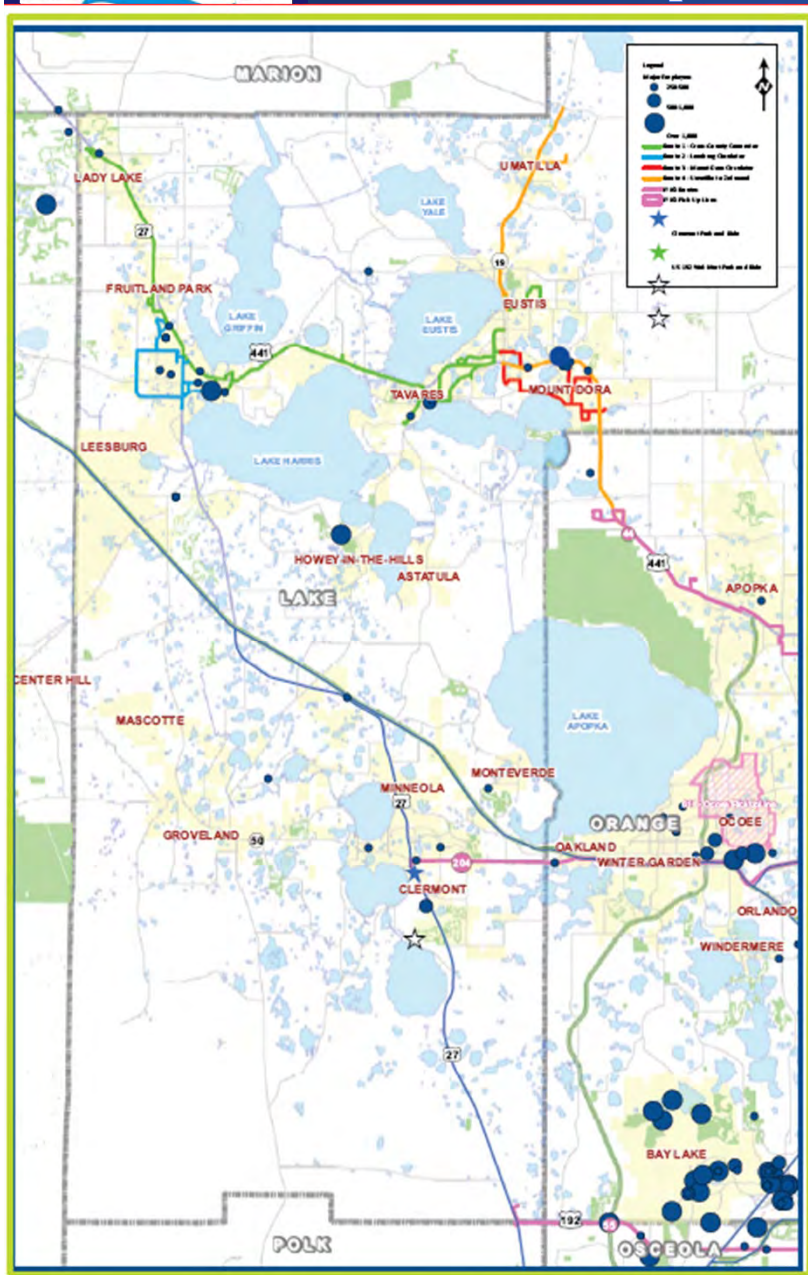
- ❖ Major industrial activity center strategically located at the convergence of I-75, Turnpike, and CSX-S Line
- ❖ Planned new interchange on Florida's Turnpike
- ❖ Potential to generate 20,000 new, permanent jobs over the next 20 years
- ❖ Identified in the Comprehensive Economic Development Strategy as a Vital Project
- ❖ Approved by U.S. Dept. of Commerce, Economic Development Administration, making Federal funding available for needed infrastructure

CR 470 Corridor



Wellness Way





□ LakeXpress provides access to over 14,000 job locations

PROMOTING REGIONAL TRANSPORTATION PARTNERSHIPS



**1616 South 14th Street
Leesburg, FL 34748
(352) 315-0170
LakeSumterMPO.com**

www.lakesumtermpo.com