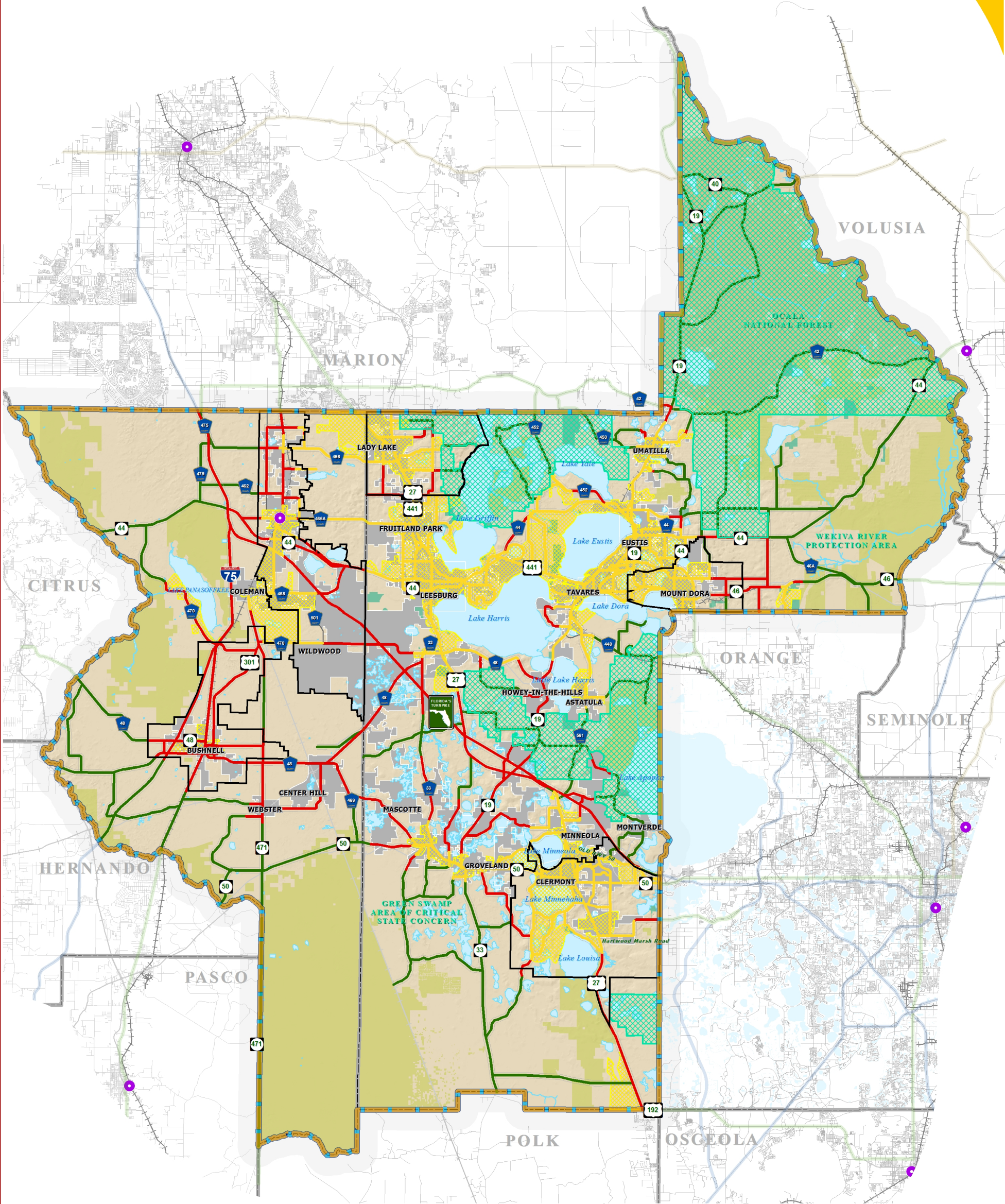


# URBAN, TRANSITIONING AND RURAL AREAS MAP



## LEGEND

- Water Body
- Municipal Area
- County Delineation
- Lake-Sumter MPO Boundary
- Amtrak Station
- Active Railroad
- Abandoned Railroad

- Public Lands Managed by Federal Agency
- Public Lands Managed by State Agency
- Public Lands Managed by Local Agency

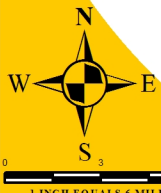
## THEME LEGEND:

- LSMPO Adopted Functional Classification
- Transitioning Segments
- all URBAN Type Roads
- all RURAL Type Roads

- Rural Protection Area
- Census 2000 Urbanized Areas Within LSMPO
- Adopted ISB or JPA

**NOTE:**  
Urban is more than 1,000 people per square mile;  
Rural is less than 500 people per square mile;  
Transitioning is between those thresholds,  
reasonably anticipated to urbanize within  
a 20-year planning horizon.

**NOTE:**  
The corridors displayed on this map, as adopted by the  
Lake-Sumter MPO, are so designated for planning purposes  
as for the efficient management of the transportation network.



TRANSPORTATION  
PLANNING AREA  
SUMTER AND LAKE COUNTY, FLORIDA



**DATA SOURCES:**  
Lake and Sumter County GIS Department, Planning  
Public Lands Florida Managed Areas (FLMA)  
Florida Natural Areas Inventory (FNAI) Data, 2003  
Data Compilation and Map production copyright of the  
Lake-Sumter Metropolitan Planning Organization  
This map product was prepared from a Geographic Information System  
established by the Lake-Sumter Metropolitan Planning Organization and  
Lake County Board of County Commissioners.  
Its employees, agents and personnel make no warranty as to its accuracy,  
and in particular its use for any labeling, dissemination, commerce,  
property boundaries, or placement on location of any map feature is disavowed.  
The Lake-Sumter Metropolitan Planning Organization and  
Lake County Board of County Commissioners, its employees, agents and  
personnel MAKE NO WARRANTY OF MERCHANTABILITY OR FITNESS FOR  
SPECIFIC USE FOR A PARTICULAR PURPOSE EXPRESS OR IMPLIED  
WITH RESPECT TO THIS MAP PRODUCT. Independent verification of all data  
contained on this map product should be obtained by any user of this map.

MAP ADOPTION:  
SEPTEMBER 23, 2009  
MAP COMPOSITION:  
SEPTEMBER 23, 2009