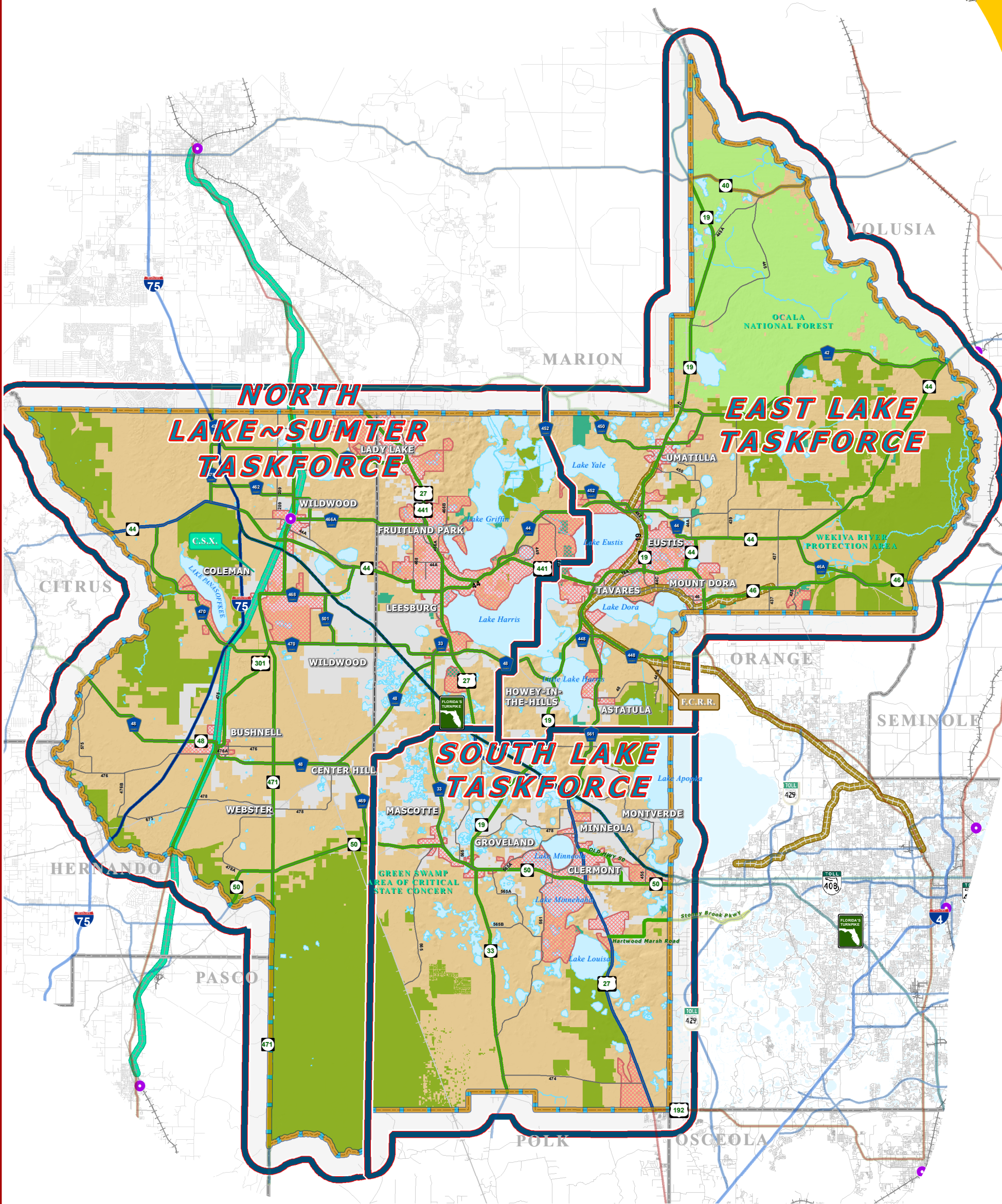
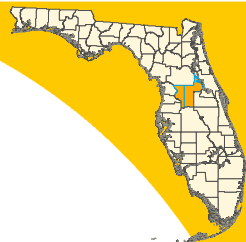


LAKE~SUMTER MPO TRANSPORTATION TASK FORCE AREAS MAP



LEGEND

- Water Body
- Municipal Area
- County Delineation
- Public Lands Managed by Federal Agency
- Public Lands Managed by State Agency
- Public Lands Managed by Local Agency

- County Road
- State Road
- US Highway
- Interstate
- Turnpike
- Amtrak Station
- Active Railroad
- Abandoned Railroad

Adopted Regional Corridor Classification

- Regionally Significant Corridor
- Strategic Intermodal System
- Emerging Strategic Intermodal System
- Regionally Significant Rail Corridor - C.S.X.
- Emerging Regionally Significant Rail Corridor - F.C.R.R.

ADOPTED: SEPTEMBER 28, 2005
REVISED: JANUARY 25, 2006
REVISED: APRIL 26, 2006
REVISED: APRIL 25, 2007
REVISED: DECEMBER 3, 2008

NOTE:
Corridors may be eligible for Transportation
Regional Incentive Program (TRIP) funding.

Task Force Delineation

Lake-Sumter MPO Boundary

Census 2000 Urbanized Areas
Within LSMPO

NOTE:
An urbanized area (UA) consists of densely settled territory that contains 50,000 or more people. A UA may contain both place and nonplace territory. The U.S. Census Bureau delineates UAs to provide a better separation of urban and rural territory, population, and housing in the vicinity of large places. At least 35,000 people in a UA must live in an area that is not part of a military reservation.

DATA SOURCES:

Lake and Sumter County GIS Department, Planning
U.S. Census Bureau, Year 2000 Urbanized Areas Boundary Files
Public Lands Florida Managed Areas (FLMA)
Florida Natural Areas Inventory (FNAI) Data
Data Compilation and Map production components of the
Lake-Sumter Metropolitan Planning Organization
This map product was prepared from a Geographic Information
System established by the Lake-Sumter Metropolitan Planning Organization and
Lake County Board of County Commissioners.
Its employees, agents and personnel, make no warranty as to its accuracy,
and in particular its use for any purpose other than that for which it was
prepared, or the placement or location of any map features shown.
The Lake-Sumter Metropolitan Planning Organization and
Lake County Board of County Commissioners, its employees, agents and
personnel, MAKE NO WARRANTY OF MERCHANTABILITY OR FITNESS FOR
ANY PARTICULAR PURPOSE, EXPRESS OR IMPLIED,
WITH RESPECT TO THIS MAP PRODUCT. Independent verification of all data
contained on this map should be obtained by any user of this map.

MAP COMPOSITION:
SEPTEMBER, 2008



TRANSPORTATION
PLANNING AREA
SUMTER AND LAKE COUNTY, FLORIDA

