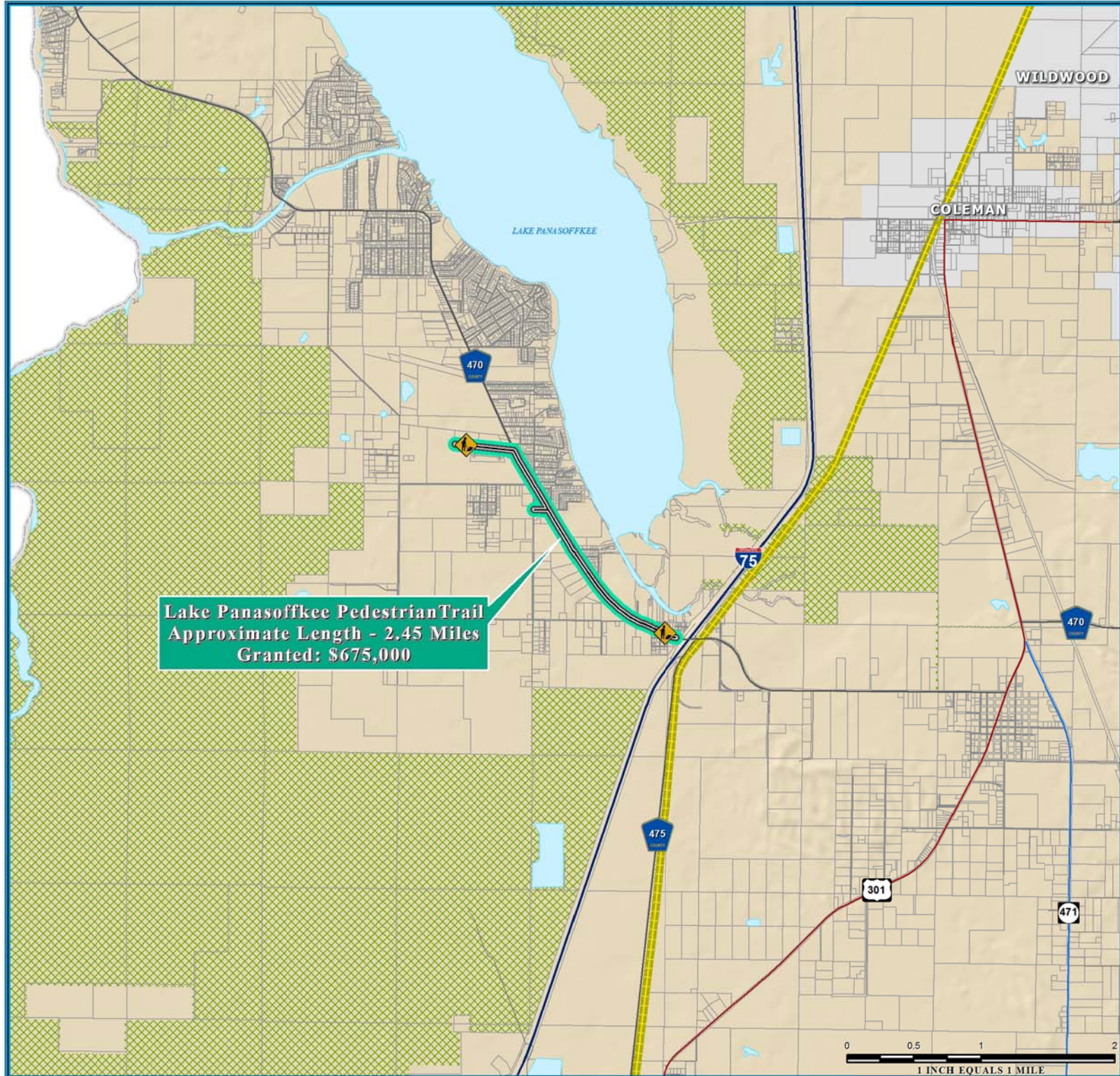
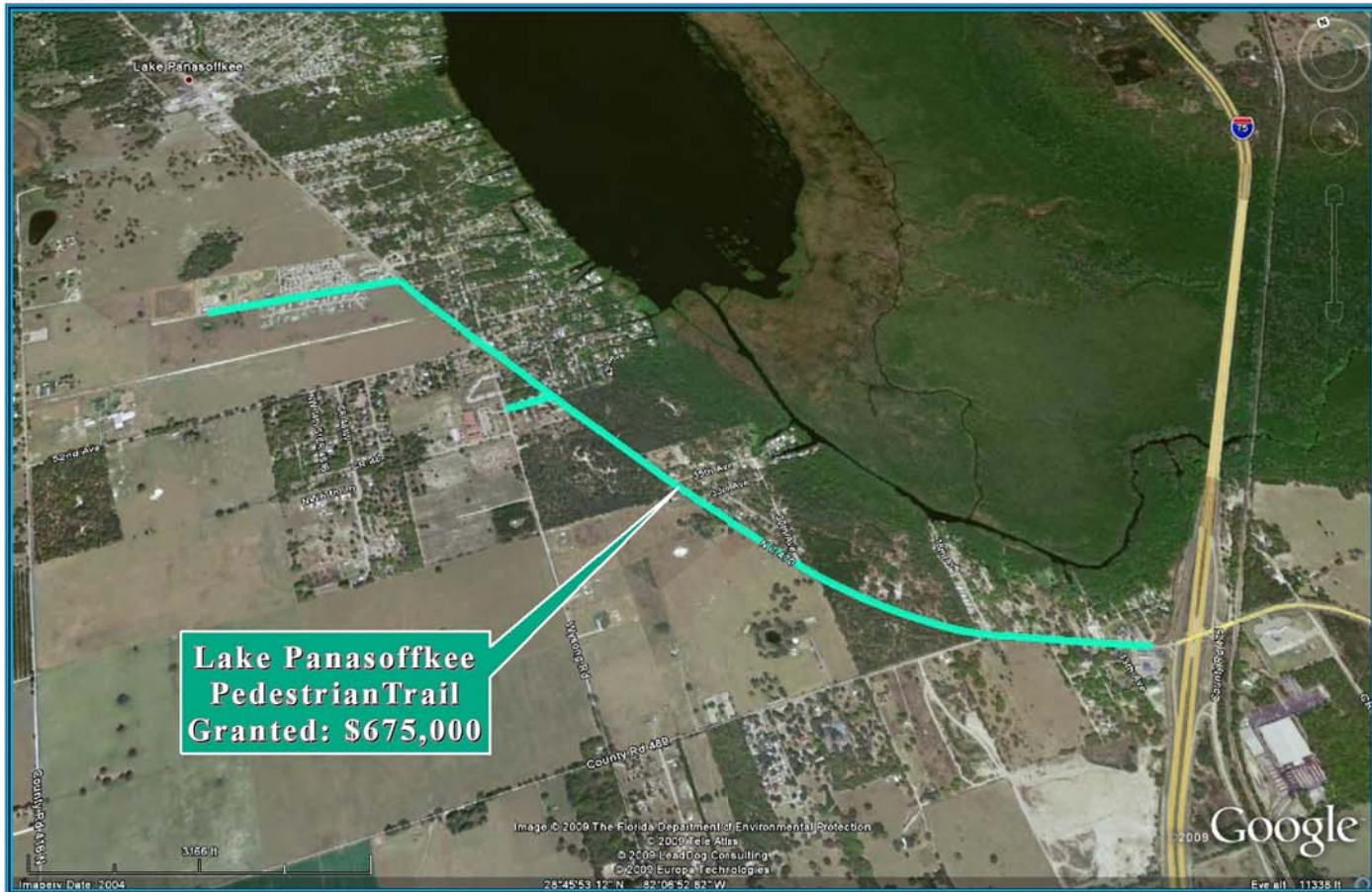


LAKE PANASOFFKEE TRAIL, CR470 ECONOMIC STIMULUS PROJECT



NOTE:
 Florida Department of Transportation (FDOT), recommended Economic Stimulus Project for Lake County and Sumter County as announced by Florida Governor May 4, 2009. Additional information about Florida's implementation of the transportation provisions of the American Recovery and Reinvestment Act of 2009 (ARRA) please visit; <http://www.dot.state.fl.us/planning/economicstimulus/>



TRANSPORTATION PLANNING AREA SUMTER AND LAKE COUNTY, FLORIDA



- County Road
- State Road
- US Highway
- Interstate
- Turnpike
- Active Railroad
- Water Body
- Public Lands Managed by Federal Agency
- Public Lands Managed by State Agency
- Public Lands Managed by Local Agency

DATA SOURCES:
 Lake and Sumter County GIS Department, Planning
 Data Compilation and Map production copyright of the
 Lake-Sumter Metropolitan Planning Organization
 This map product was prepared from all available data and
 information available to the Lake-Sumter Metropolitan
 Planning Organization and Lake County Board of County
 Commissioners. It is not intended to be used for
 engineering, legal, or other purposes. The user assumes
 all responsibility for the use of this map product. The
 Lake-Sumter Metropolitan Planning Organization and
 Lake County Board of County Commissioners, its employees, agents and
 personnel shall not be held liable for any errors or omissions
 in this map product. A NOTICE OF LIABILITY OF THE LAKESUMTER
 MPO IS LOCATED AT THE END OF THIS MAP PRODUCT. INDEPENDENT
 VERIFICATION OF ALL DATA IS THE RESPONSIBILITY OF THE USER.
 MAP COMPOSITION:
 MAY, 2009

\\Lakesumter\mop\gis\ARRA_LakePanasoffkeeTrail_Resurfacing_StimulusFundedSegment_11x17.mxd - 7/15/2009 @ 9:22:09 AM