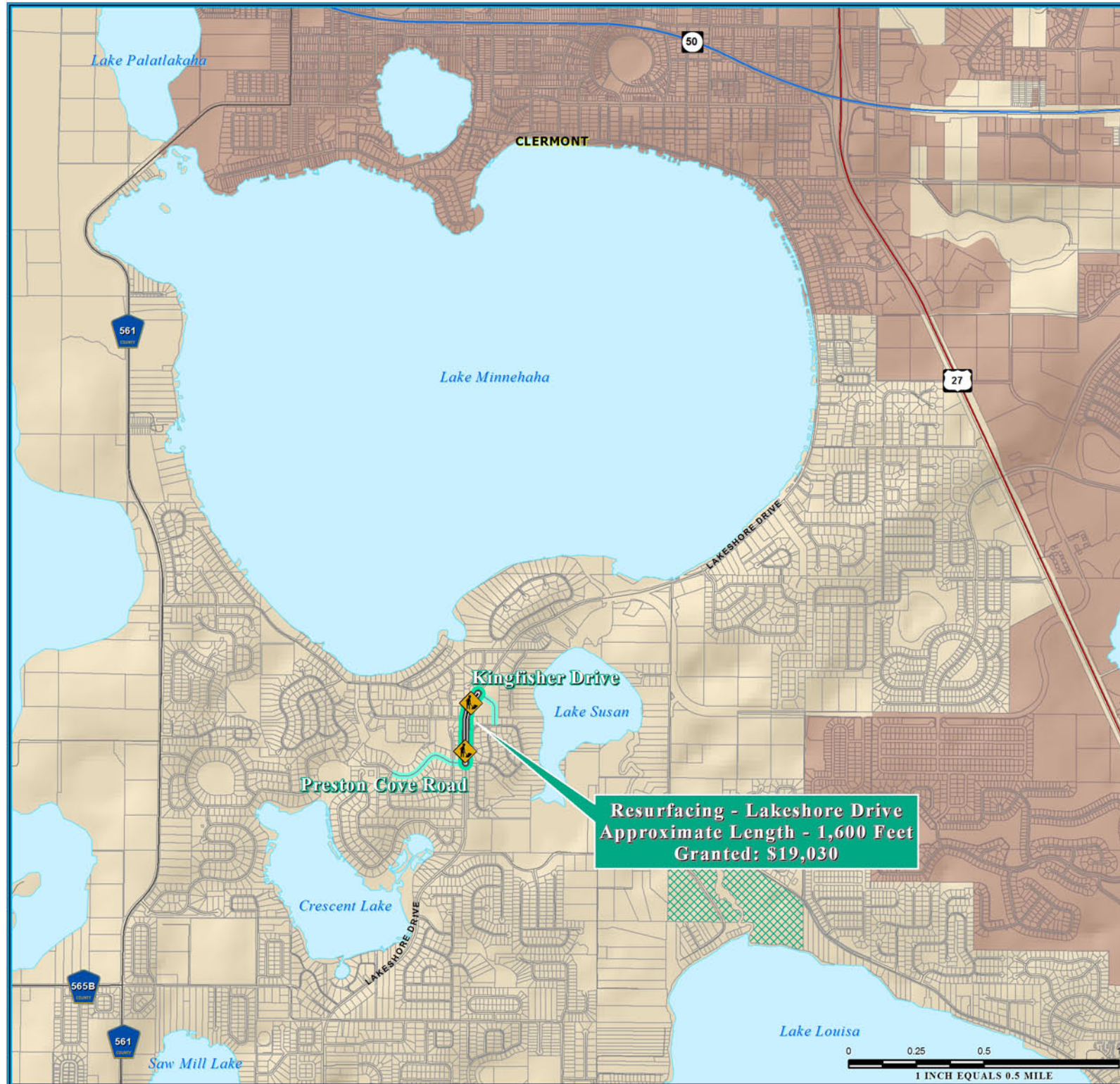
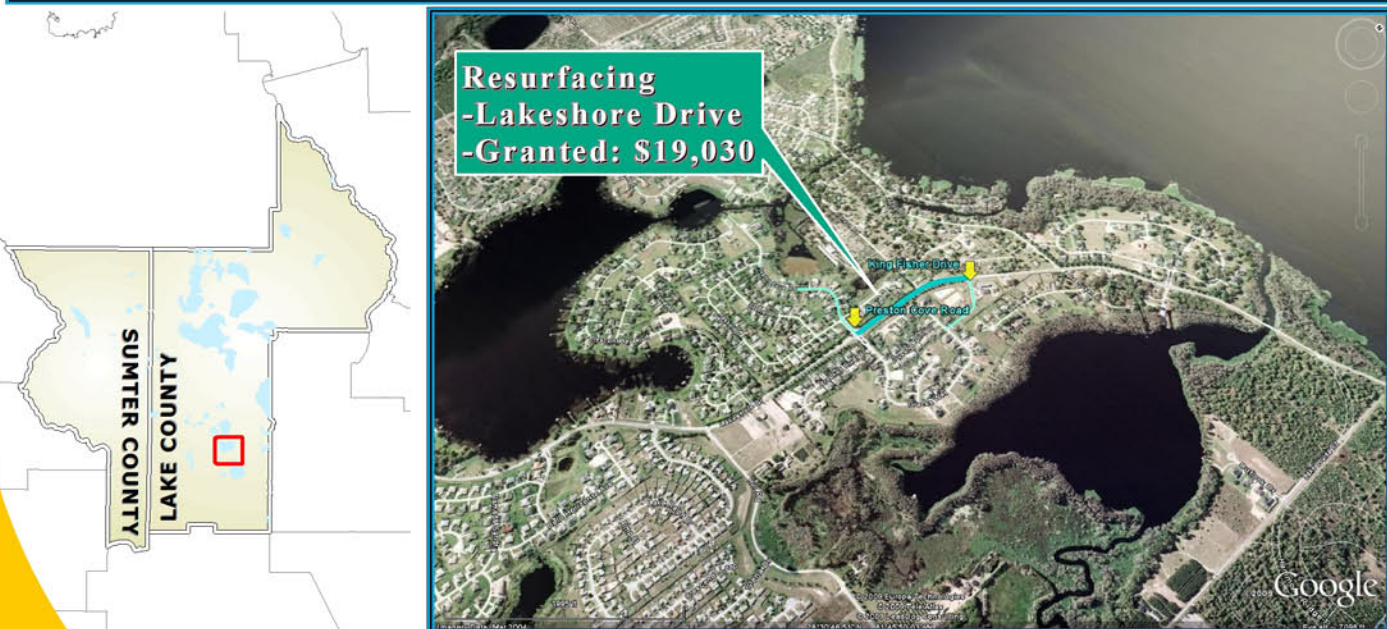
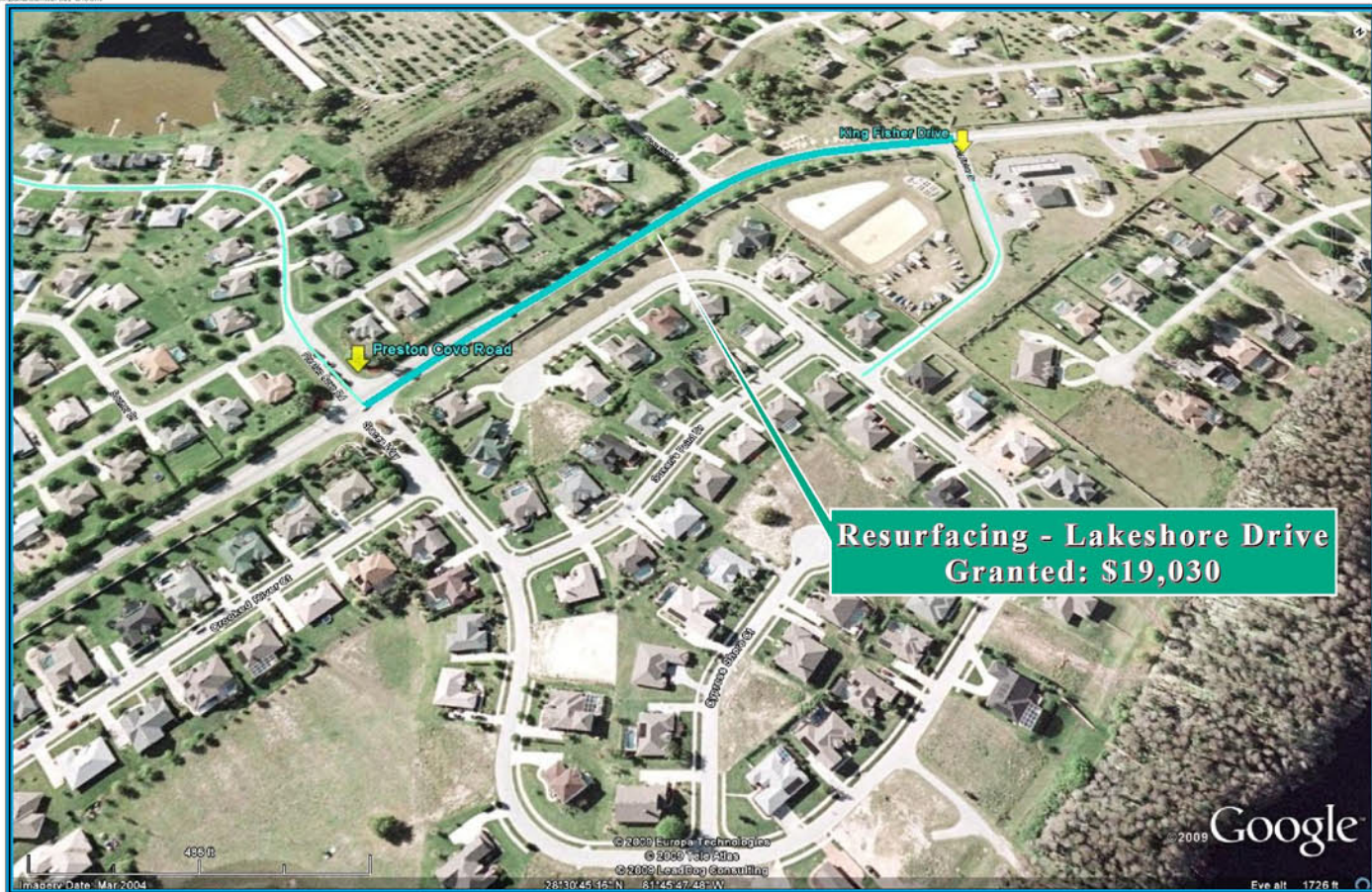


# RESURFACING-LAKESHORE DRIVE ECONOMIC STIMULUS PROJECT



**NOTE:**  
Florida Department of Transportation (FDOT), recommended Economic Stimulus Project for Lake County and Sumter County as announced by Florida Governor May 4, 2009. Additional information about Florida's implementation of the transportation provisions of the American Recovery and Reinvestment Act of 2009 (ARRA) please visit; <http://www.dot.state.fl.us/planning/economicstimulus/>



## TRANSPORTATION PLANNING AREA SUMTER AND LAKE COUNTY, FLORIDA



- County Road
- State Road
- US Highway
- Interstate
- Turnpike
- Active Railroad
- Water Body
- Public Lands Managed by Federal Agency
- Public Lands Managed by State Agency
- Public Lands Managed by Local Agency

**DATA SOURCES:**  
Lake and Sumter County GIS Department, Planning and Data Compilation and Map production copyright of the Lake-Sumter Metropolitan Planning Organization.  
This map product was prepared from a GIS database. The data system was developed by the Lake-Sumter Metropolitan Planning Organization and its employees, agents and personnel. It is the responsibility of the Lake-Sumter Metropolitan Planning Organization to ensure the accuracy, reliability, and proper use of the data. The Lake-Sumter Metropolitan Planning Organization and its employees, agents and personnel do not warrant the accuracy, reliability, or proper use of the data. The Lake-Sumter Metropolitan Planning Organization and its employees, agents and personnel do not warrant the accuracy, reliability, or proper use of the data. The Lake-Sumter Metropolitan Planning Organization and its employees, agents and personnel do not warrant the accuracy, reliability, or proper use of the data.

MAP COMPOSITION:  
MAY, 2009

\\LakeSumter\mop\gis\ARRA\_LakeShoreDrive\_PrestonCoveToKingfisherDrive\_StimulusFundedSegment\_11x17.mxd - 9/17/2009 @ 11:23:44 AM