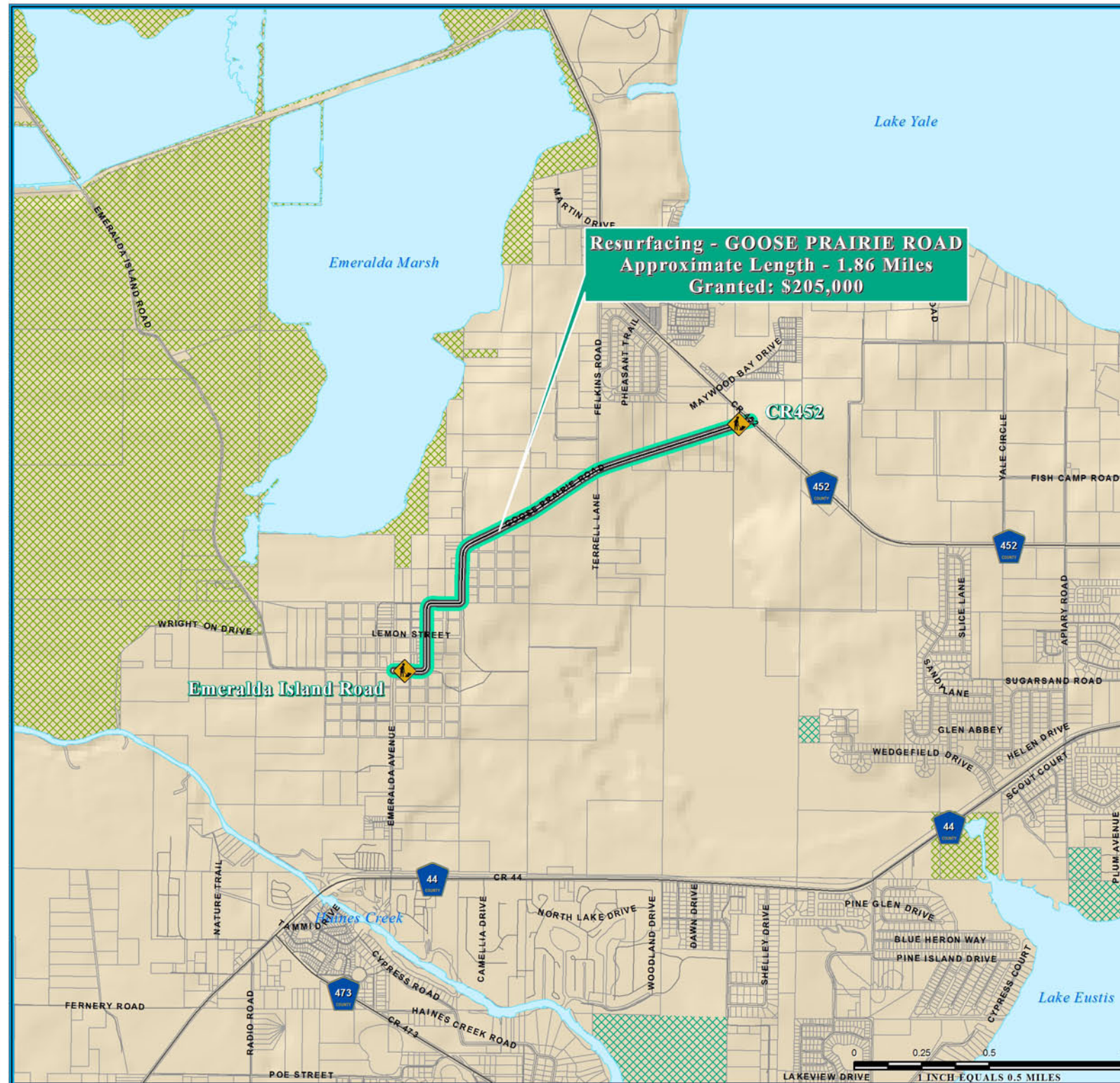
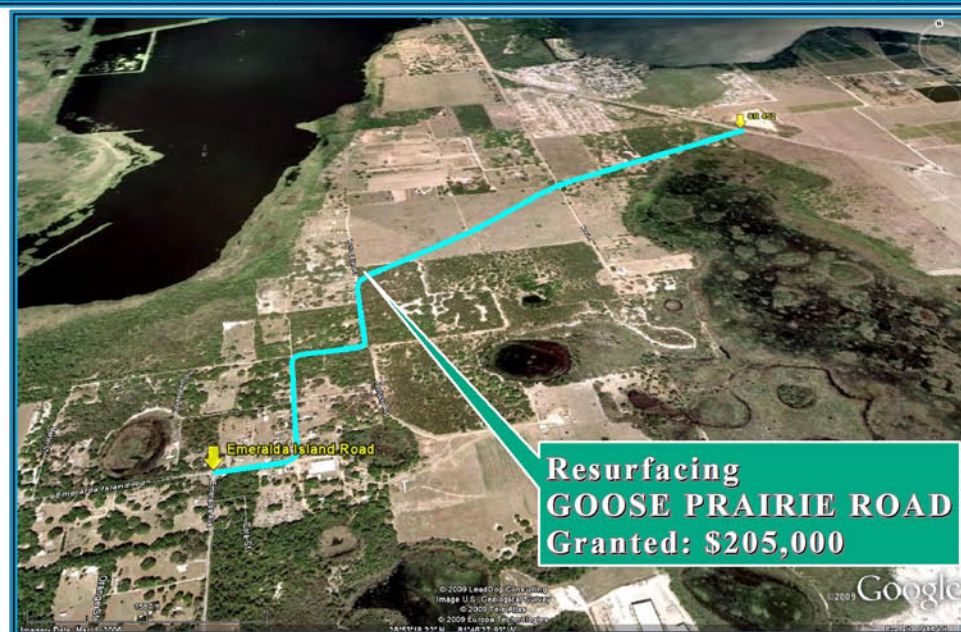


# RESURFACING-GOOSE PRAIRIE ROAD ECONOMIC STIMULUS PROJECT



**NOTE:**

Florida Department of Transportation (FDOT), recommended Economic Stimulus Project for Lake County and Sumter County as announced by Florida Governor May 4, 2009. Additional information about Florida's implementation of the transportation provisions of the American Recovery and Reinvestment Act of 2009 (ARRA) please visit; <http://www.dot.state.fl.us/planning/economicstimulus/>



## TRANSPORTATION PLANNING AREA SUMTER AND LAKE COUNTY, FLORIDA



- County Road
- State Road
- US Highway
- Interstate
- Turnpike
- Active Railroad

- Water Body
- Public Lands Managed by Federal Agency
- Public Lands Managed by State Agency
- Public Lands Managed by Local Agency

**DATA SOURCES:**  
Lake and Sumter County GIS Department, Planning  
Data Compilation and Map production copyright of the  
Lake-Sumter Metropolitan Planning Organization  
This project was prepared from a GIS database of the  
System established by the Lake-Sumter Metropolitan Planning Organization and  
Lake County Board of County Commissioners.  
Its use, reproduction, or distribution, without the written consent of the  
Lake-Sumter Metropolitan Planning Organization and  
Lake County Board of County Commissioners, is prohibited.  
© 2009 Lake-Sumter Metropolitan Planning Organization  
ALL RIGHTS RESERVED. MAP PRODUCTION: Independent cartographer of all data  
provided in this map product. All other data provided by the user of this map.

MAP COMPOSITION:  
MAY, 2009

\\Lakesumter\mop\gis\ARRA\_GoosePrairieRoad\_Resurfacing\_StimulusFundedSegment\_11x17.mxd - 7/14/2009 @ 5:22:02 PM