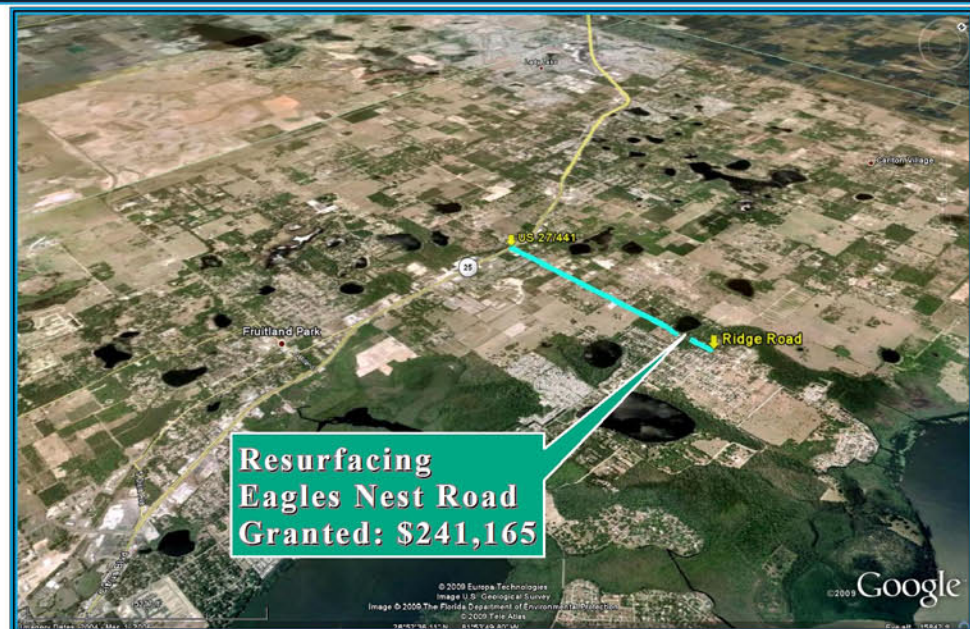
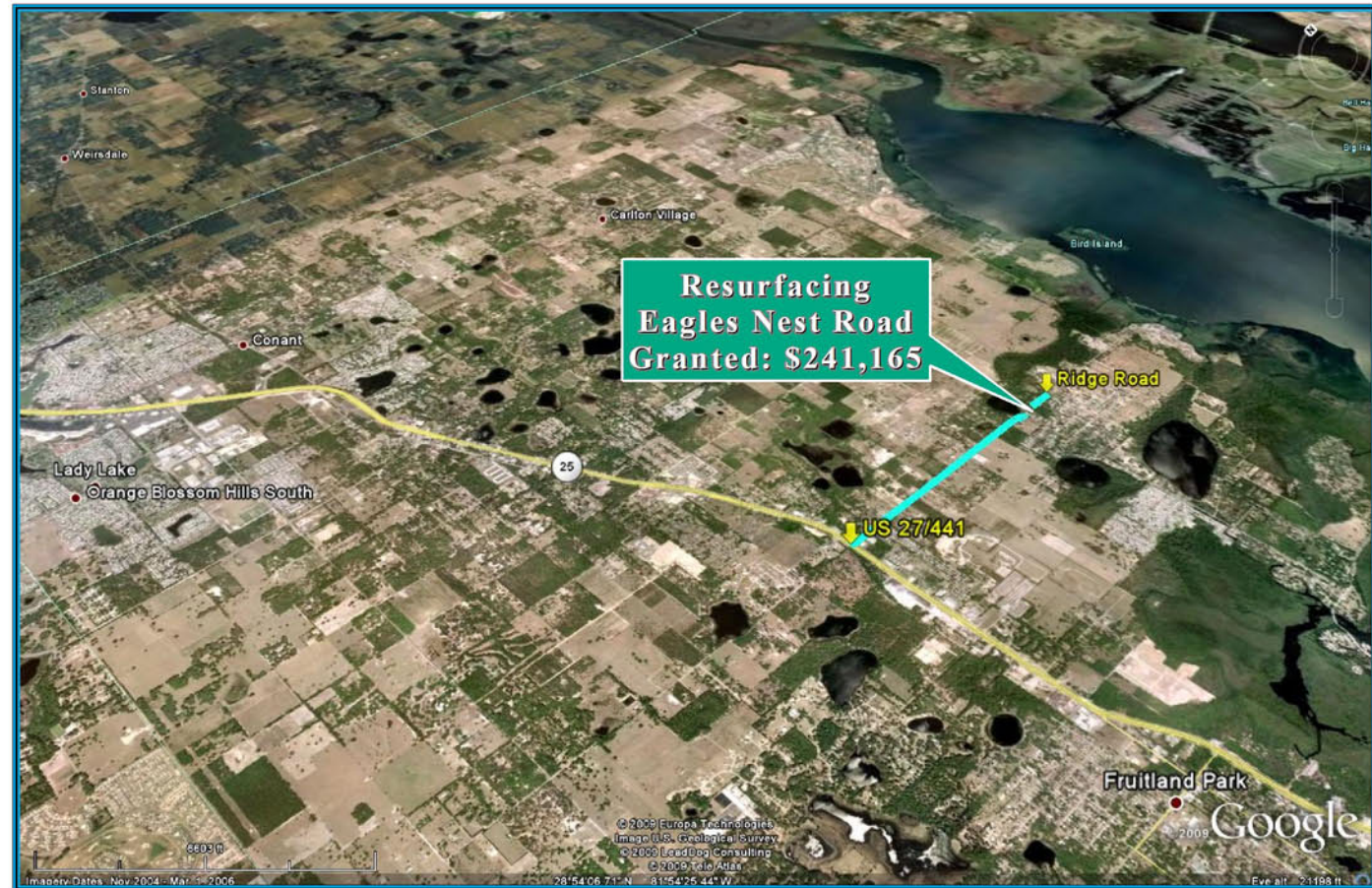


RESURFACING-EAGLES NEST ROAD ECONOMIC STIMULUS PROJECT



NOTE:
 Florida Department of Transportation (FDOT), recommended Economic Stimulus Project for Lake County and Sumter County as announced by Florida Governor May 4, 2009. Additional information about Florida's implementation of the transportation provisions of the American Recovery and Reinvestment Act of 2009 (ARRA) please visit; <http://www.dot.state.fl.us/planning/economicstimulus/>



TRANSPORTATION PLANNING AREA SUMTER AND LAKE COUNTY, FLORIDA



- County Road
- State Road
- US Highway
- Interstate
- Turnpike
- Active Railroad
- Water Body
- Public Lands Managed by Federal Agency
- Public Lands Managed by State Agency
- Public Lands Managed by Local Agency

DATA SOURCES:
 Lake and Sumter County GIS Department, Planning
 Data Compilation and Map production copyright of the
 Lake-Sumter Metropolitan Planning Organization
 This map product was prepared from a GIS database that was
 developed by the Lake-Sumter Metropolitan Planning Organization and
 Lake County Board of County Commissioners. It is necessary
 and in part to the accuracy of the information contained
 in this map product, or if it is used in connection with any other data or
 information, the user assumes all responsibility for the accuracy of the
 information. The Lake-Sumter Metropolitan Planning Organization and
 Lake County Board of County Commissioners, its employees, agents and
 personnel do not warrant, represent or guarantee the accuracy, reliability,
 completeness or suitability of the information for any purpose other than
 that for which it was prepared. The user assumes all responsibility for the
 accuracy of the information. The Lake-Sumter Metropolitan Planning
 Organization and Lake County Board of County Commissioners do not
 warrant, represent or guarantee the accuracy, reliability, completeness
 or suitability of the information for any purpose other than that for which
 it was prepared. The user assumes all responsibility for the accuracy of
 the information.

MAP COMPOSITION:
 MAY, 2009

\\Lakesumter\mop\gis\ARRA_EaglesNest_Resurfacing_Stimulus\FundedSegment_11x17.mxd - 9/17/2009 @ 11:22:00 AM