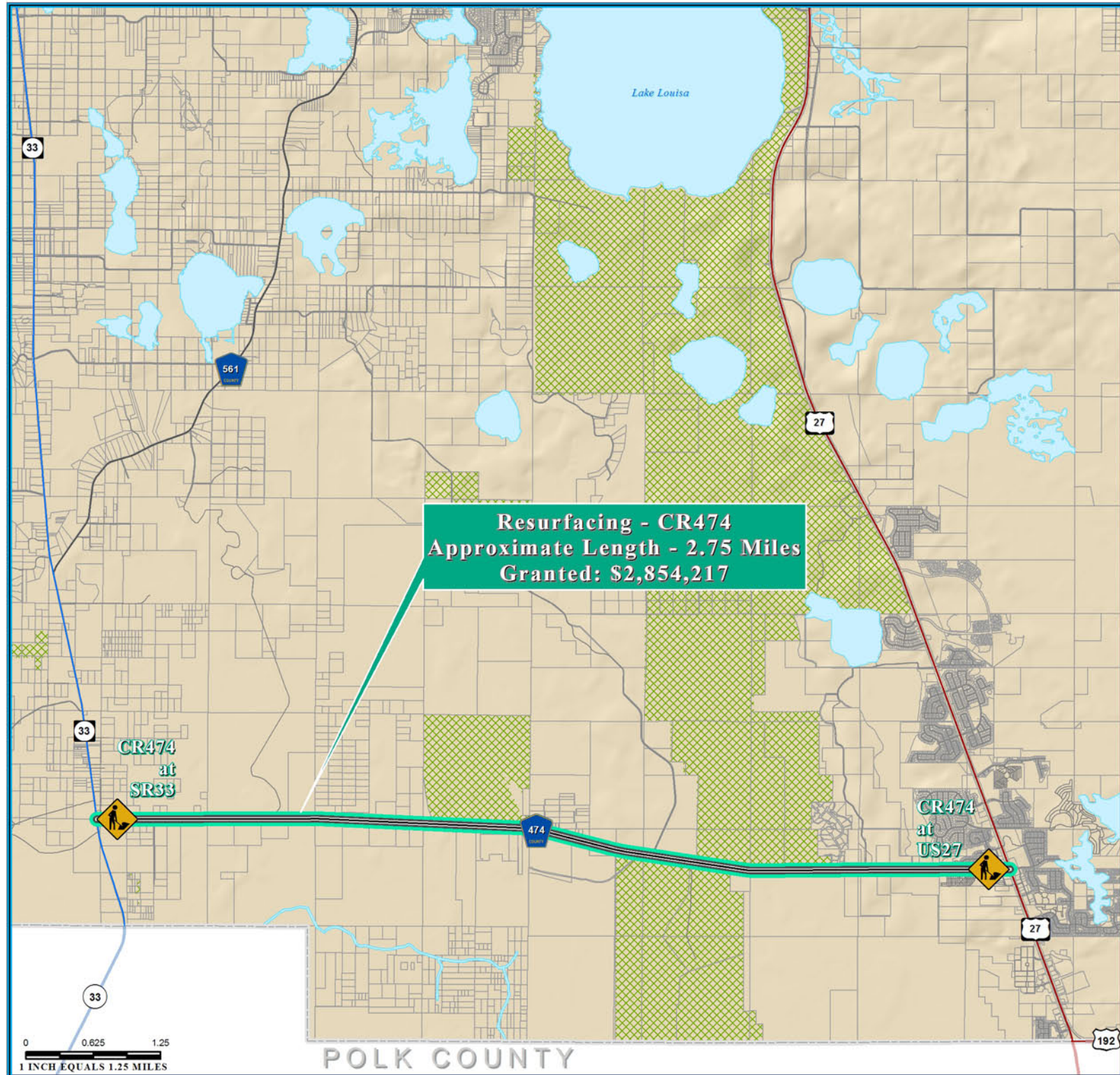
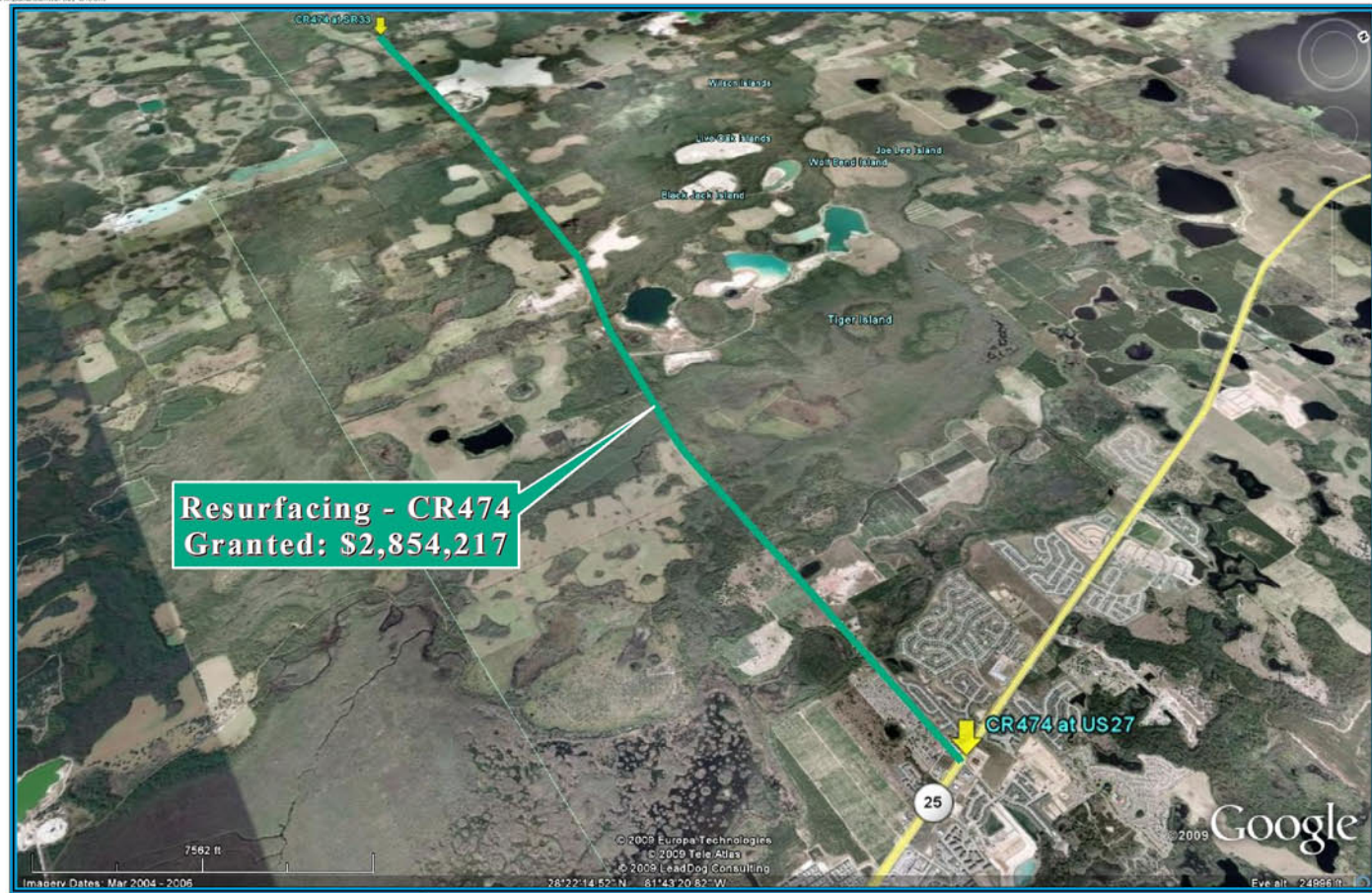


RESURFACING - CR474 ECONOMIC STIMULUS PROJECT



NOTE:
Florida Department of Transportation (FDOT), recommended Economic Stimulus Project for Lake County and Sumter County as announced by Florida Governor May 4, 2009. Additional information about Florida's implementation of the transportation provisions of the American Recovery and Reinvestment Act of 2009 (ARRA) please visit; <http://www.dot.state.fl.us/planning/economicstimulus/>



TRANSPORTATION PLANNING AREA SUMTER AND LAKE COUNTY, FLORIDA



- County Road
- State Road
- US Highway
- Interstate
- Turnpike
- Active Railroad
- Water Body
- Public Lands Managed by Federal Agency
- Public Lands Managed by State Agency
- Public Lands Managed by Local Agency

DATA SOURCES:
Lake and Sumter County GIS Department, Planning
Data Compilation and Map production copyright of the
Lake-Sumter Metropolitan Planning Organization.
This map product was prepared from a GIS database of the
System established by the Lake-Sumter Metropolitan Planning Organization and
Lake County Board of County Commissioners. The accuracy, reliability, and
proprietary liability, or its use or location of any data shown in this map
product is the responsibility of the user. The Lake-Sumter Metropolitan Planning Organization
and Lake County Board of County Commissioners, its employees, agents and
contractors, make no warranty, either expressed or implied, for the use of this
map product. NO PART OF THIS MAP PRODUCT, independent of all other
copyrighted or trademarked material, may be reproduced without the written
consent of the Lake-Sumter Metropolitan Planning Organization.

MAP COMPOSITION:
MAY, 2009

\\lakesumter\mopo\gis\ARRA - CR474 - SR33toUS27 - StimulusFundedSegment - 11x17.mxd - 9/17/2009 @ 11:16:52 AM