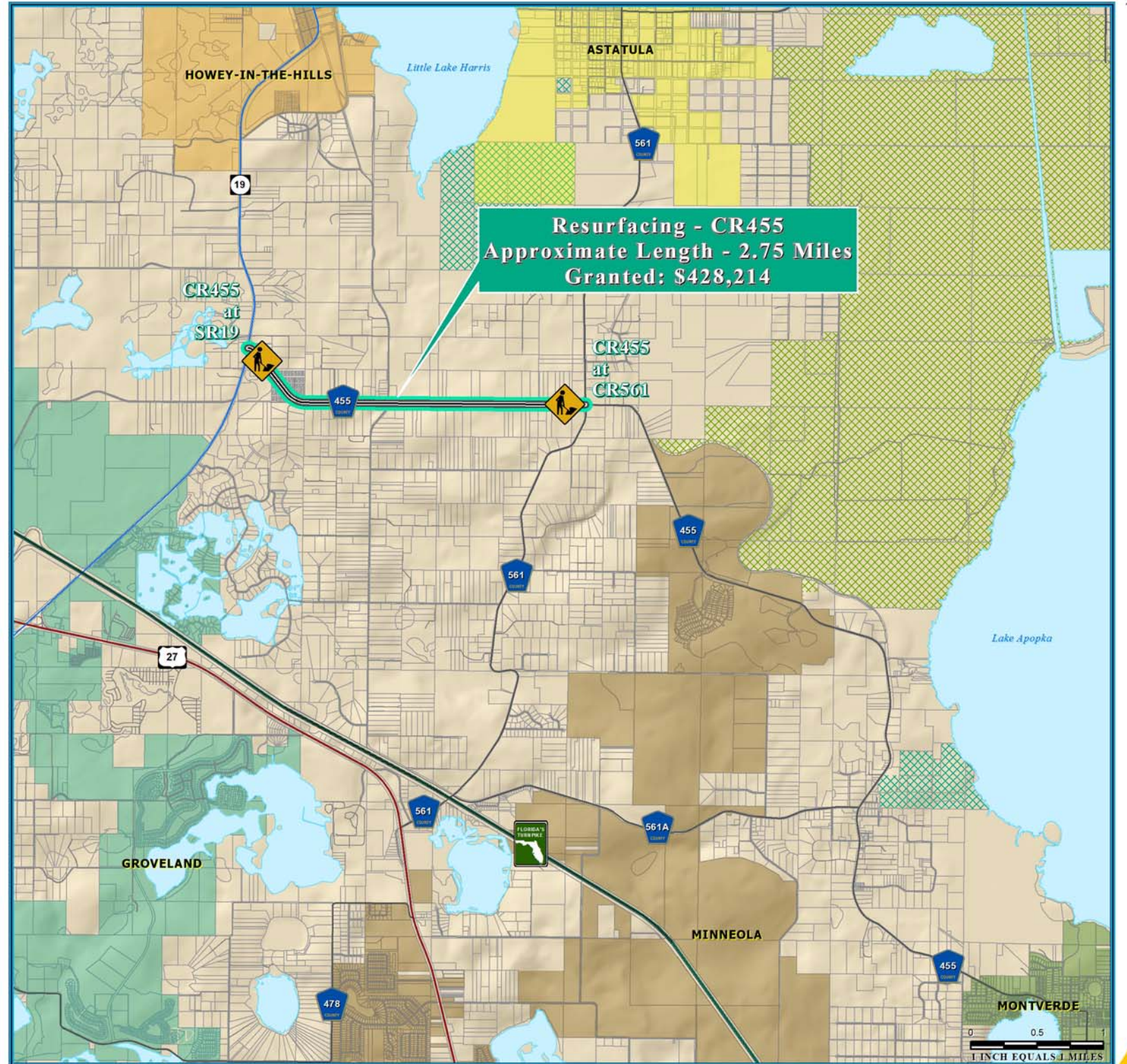
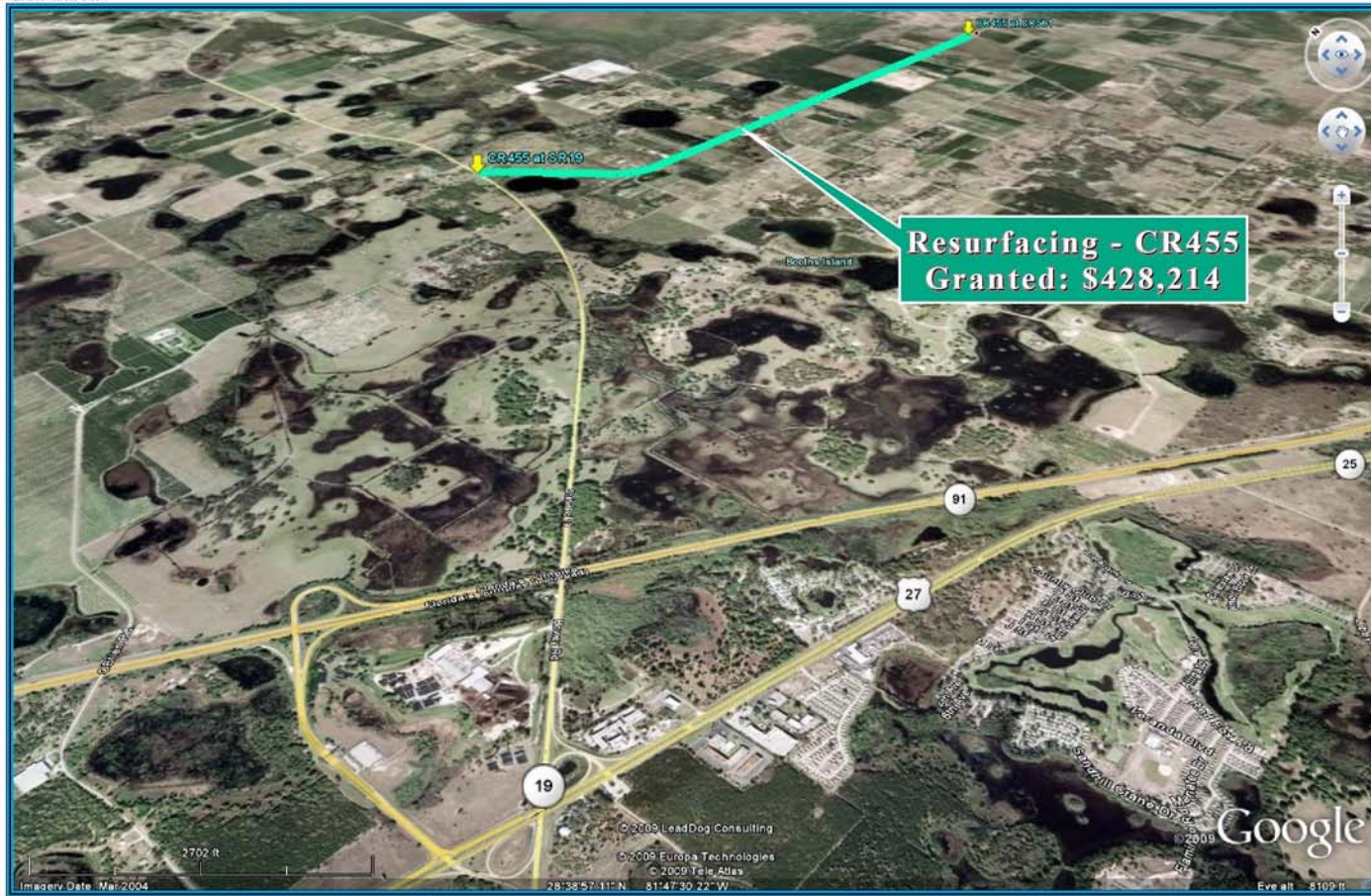


RESURFACING - CR455 ECONOMIC STIMULUS PROJECT



NOTE:
Florida Department of Transportation (FDOT), recommended Economic Stimulus Project for Lake County and Sumter County as announced by Florida Governor May 4, 2009. Additional information about Florida's implementation of the transportation provisions of the American Recovery and Reinvestment Act of 2009 (ARRA) please visit; <http://www.dot.state.fl.us/planning/economicstimulus/>



TRANSPORTATION PLANNING AREA SUMTER AND LAKE COUNTY, FLORIDA



- County Road
- State Road
- US Highway
- Interstate
- Turnpike
- Active Railroad
- Water Body
- Public Lands Managed by Federal Agency
- Public Lands Managed by State Agency
- Public Lands Managed by Local Agency

DATA SOURCES:
Lake and Sumter County GIS Department, Planning Data Compilation and Map production copyright of the Lake-Sumter Metropolitan Planning Organization.
This map product was prepared from a geographic information system established by the Lake-Sumter Metropolitan Planning Organization and Lake County Board of County Commissioners. The map product is not intended to be used for any other purpose. The map product is not intended to be used for any other purpose. The map product is not intended to be used for any other purpose. The map product is not intended to be used for any other purpose.

MAP COMPOSITION: MAY, 2009

\\lakesumterpo\gis\ARRA_CR455_SR19toCR561_StimulusFundedSegment_11x17.mxd - 9/17/2009 @ 11:30:04 AM