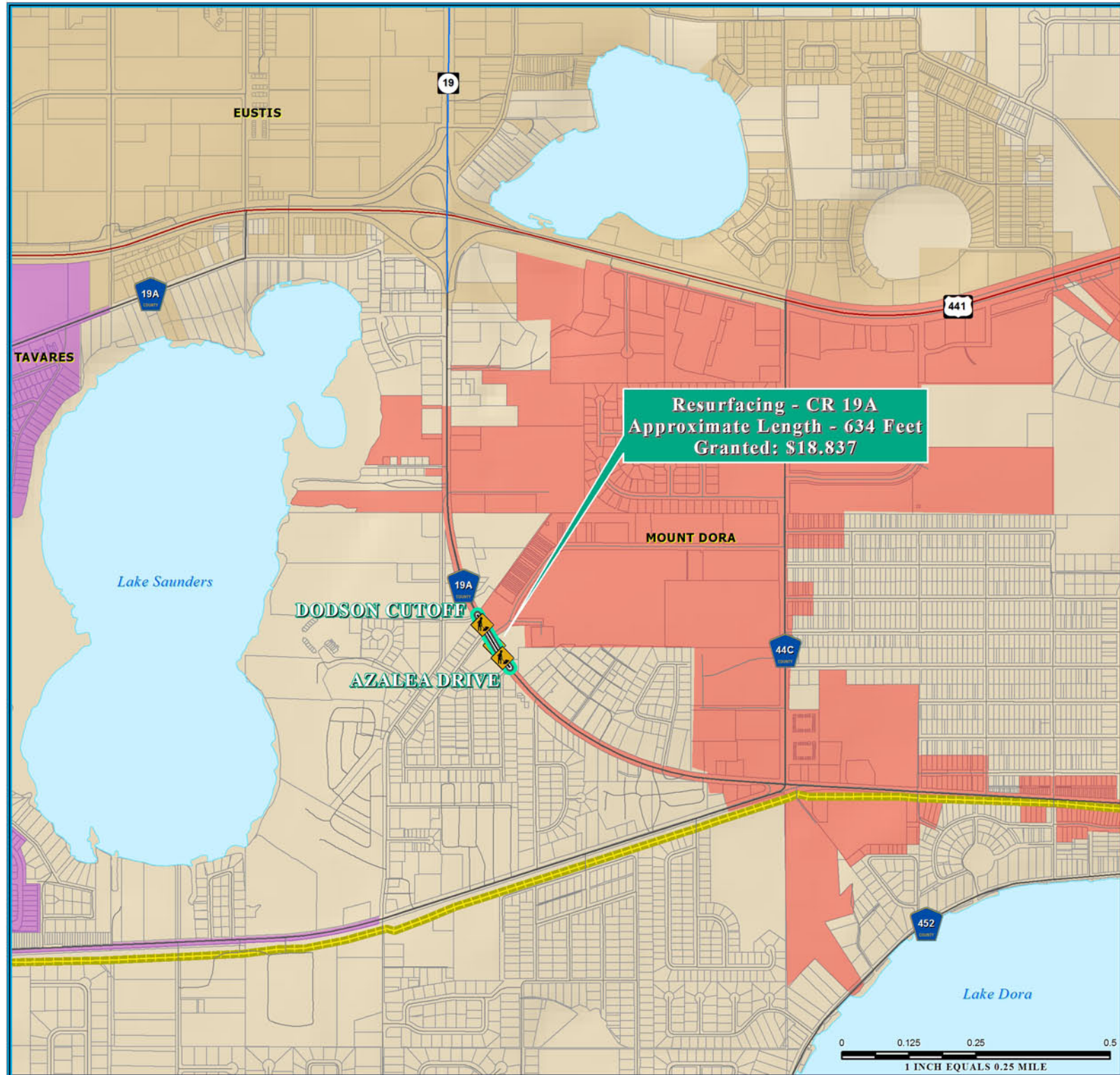
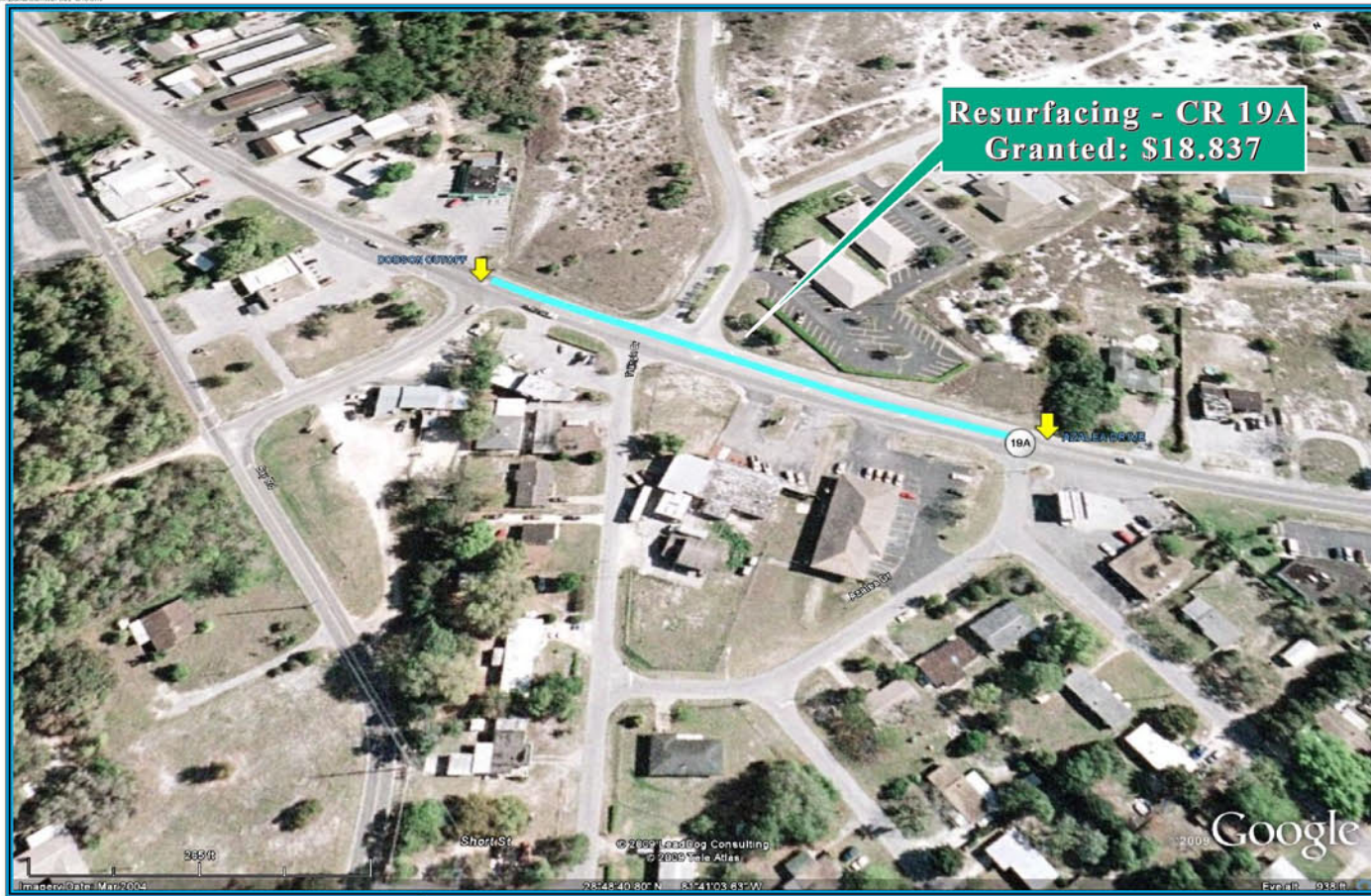


RESURFACING - CR19A ECONOMIC STIMULUS PROJECT



NOTE:
 Florida Department of Transportation (FDOT), recommended Economic Stimulus Project for Lake County and Sumter County as announced by Florida Governor May 4, 2009. Additional information about Florida's implementation of the transportation provisions of the American Recovery and Reinvestment Act of 2009 (ARRA) please visit; <http://www.dot.state.fl.us/planning/economicstimulus/>



TRANSPORTATION PLANNING AREA SUMTER AND LAKE COUNTY, FLORIDA



- County Road
- State Road
- US Highway
- Interstate
- Turnpike
- Active Railroad
- Water Body
- Public Lands Managed by Federal Agency
- Public Lands Managed by State Agency
- Public Lands Managed by Local Agency

DATA SOURCES:
 Lake and Sumter County GIS Department, Planning
 Data Compilation and Map production copyright of the
 Lake-Sumter Metropolitan Planning Organization
 This map product was prepared from a geographic information system
 system established by the Lake-Sumter Metropolitan Planning Organization and
 Lake County Board of County Commissioners.
 Its employees, agents and personnel, make no warranty as to the accuracy
 and/or timeliness of the information, data, or other content, or the
 property boundaries, or its use or reliance on any data or information.
 The Lake-Sumter Metropolitan Planning Organization and
 Lake County Board of County Commissioners, its employees, agents and
 personnel shall not be liable for any damages, including consequential
 damages, arising from the use of this map product. Independent verification of all data
 contained on this map product should be obtained by the user of this map.

MAP COMPOSITION:
 M.A.D., 2009

\\Lakesumter\GIS\ARRA_CR19A_Resurfacing_StimulusFundedSegment_11x17.mxd - 6/12/2009 @ 5:14:31 PM