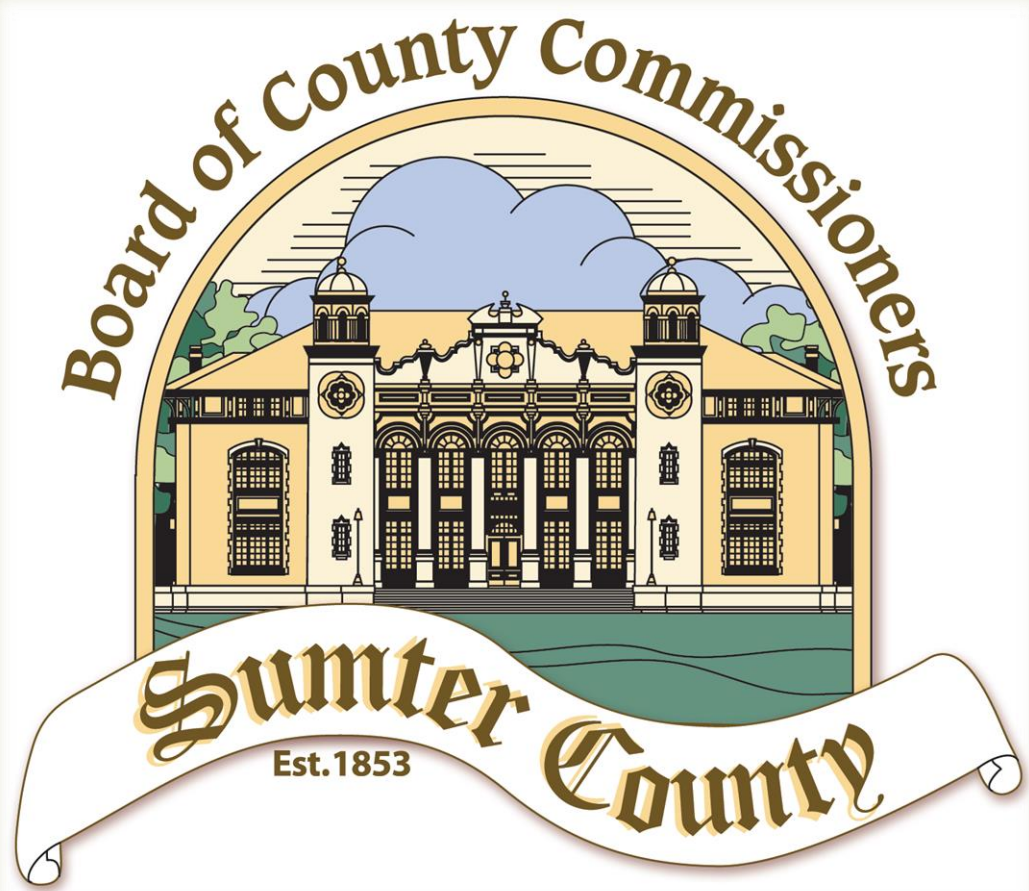


FLORIDA
Sumter County



2016 TRAFFIC COUNTS



SUMTER COUNTY
ANNUAL TRAFFIC COUNT PROGRAM
2016 TRAFFIC REPORT

Every year, the Lake~Sumter Metropolitan Planning Organization (MPO), in cooperation and partnership with Sumter County Public Works Department, implements a traffic count program. The MPO collects and analyzes the traffic data, and subsequently uses the information to identify traffic flow trends over time and to support the decision-making process related to road maintenance and project development. The traffic data is used by the MPO, County, municipalities within the County, and other transportation agencies in the review of road improvement projects, traffic impact studies for proposed developments, and level-of-service ratings for maintenance operations. In the private sector - realtors, bankers, developers, economic development agencies, as well as citizens also use traffic count data for a variety of purposes. This information is provided via this web site as a service of Sumter County in partnership with the MPO.

The "SUMTER COUNTY ANNUAL TRAFFIC REPORT – 2016 TRAFFIC REPORT" provides the latest traffic count information. The counts were obtained using pneumatic traffic data recorders and the locations were marked using GPS units. Data collection was conducted during the months of January, February, March and April 2016 during the historical peak season of activity in Sumter County. Data was collected for a 24 hour period on a Tuesday, Wednesday or Thursday for each count station. Additional counts were collected at a few select stations on a Monday to capture the special event traffic generated by the Webster Flea Market.

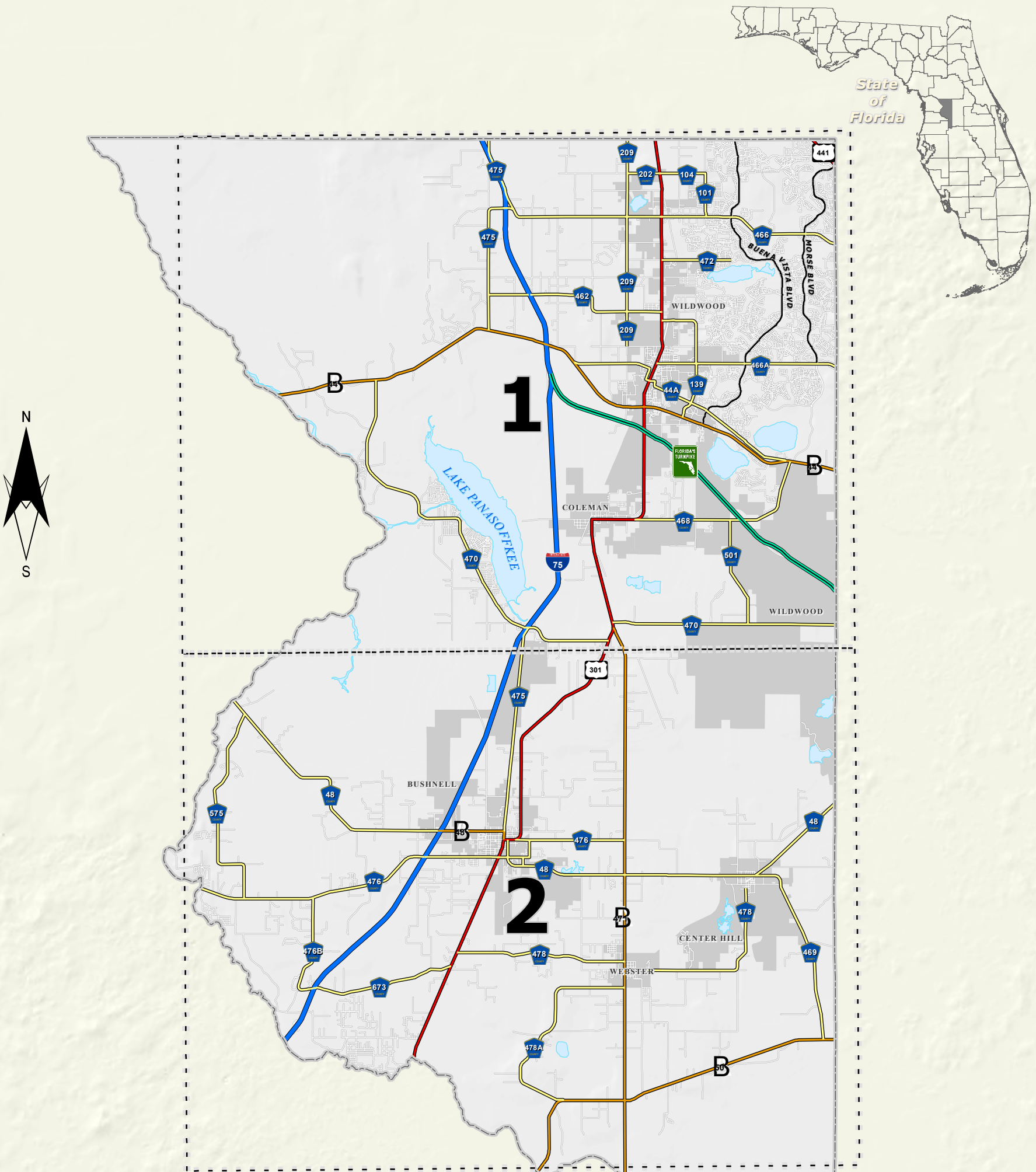
The report contains a series of maps and a table. The following information is intended to explain the headings in the table as well as key definitions and information associated with the Annual Traffic Count Program:

1	2	3	4	5	6						7						8	9	10	11	
Sta ID	Street	Location Description	Start Date	Dura- tion	2011	2012	2013	2014	2015	2016	A.M. Peak Hour		P.M. Peak Hour				# of Lanes	Posted Speed	Golf Cart		
											Time	Total	NB/EB	SB/WB	'K'	'D'			Time	Total	NB/EB

1. Sta ID – This is the unique station number assigned to each count station for consistent tracking.
2. Street – Name of the street/road where the count was taken.
3. Location Description – Location that the count was obtained described by distance from the nearest major cross street. The location is also marked by a GPS point location.
4. Start Date – The data the volume count was started.
5. The length of time data was collected, usually 24 hours.
6. ADT – The "Average Daily Trips" is a measure of the traffic volume observed during the 2016 count period. The historical (2011 - 2015) ADT is also provided for reference. An ADT of 0 or NC signifies that a count was not obtained in that year.
7. A.M. Peak Hour – The traffic information observed for the highest one hour period during the morning.
 - Time – The start time of the A.M. peak hour (e.g. 9:15 means the peak hour is 9:15 to 10:15).
 - Total – Total traffic observed during the A.M. peak hour.
 - NB/EB – The traffic volume observed in the NB or EB (depending on road orientation) during the A.M. peak hour.
 - SB/WB – The traffic volume observed in the SB or WB (depending on road orientation) during the A.M. peak hour.
 - K – This factor reflects the ratio of total A.M. peak hour traffic to the total daily traffic (e.g. if peak hour volume is 100 vehicles and ADT is 1,000, then $K = \text{peak}/\text{daily} = 100/1,000 = 0.1$). It is reported in the table as a percentage.
 - D – This factor reflects the ratio of peak direction peak hour traffic to the total A.M. peak hour traffic (e.g. if volume in EB direction 550 vehicles and WB direction is 450 vehicles, then total A.M. peak hour volume is 1,000 vehicles and $D = \text{peak direction}/\text{total peak} = 550/1,000 = 0.55$). It is reported in the table as a percentage.
8. P.M. Peak Hour – The traffic information for the highest one hour period during the evening peak.
 - Time – The start time of the P.M. peak hour (e.g. 4:30 means the peak hour is 4:30 to 5:30).
 - Total – Total traffic observed during the P.M. peak hour.
 - NB/EB – The traffic volume observed in the NB or EB (depending on road orientation) during the P.M. peak hour.
 - SB/WB – The traffic volume observed in the SB or WB (depending on road orientation) during the P.M. peak hour.
 - K – This factor reflects the ratio of total P.M. peak hour traffic to the total daily traffic (e.g. if peak hour volume is 100 vehicles and ADT is 1,000, then $K = \text{peak}/\text{daily} = 100/1,000 = 0.1$). It is reported in the table as a percentage.
 - D – This factor reflects the ratio of peak direction peak hour traffic to the total P.M. peak hour traffic. (e.g. if volume in EB direction 550 vehicles and WB direction is 450 vehicles, then total P.M. peak hour volume is 1,000 vehicles and $D = \text{peak direction}/\text{total peak} = 550/1,000 = 0.55$). It is reported in the table as a percentage.
9. # of Lanes – The number of travel lanes on the roadway at the time that the count was taken.
10. Posted Speed – The posted speed limit on the road at the location where the count was taken.
11. Golf Cart – Bi-directional golf cart traffic observed on dedicated golf cart paths or golf cart lanes at the location where the count was taken. The count observed in 2015 is also provided.

2016 SUMTER COUNTY ANNUAL TRAFFIC COUNTS

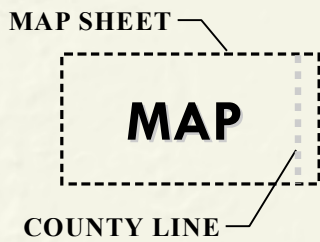
M P O T R A F F I C C O U N T S P R O G R A M



SUMTER COUNTY TRAFFIC COUNTS MAP SERIES INDEX

Effective Date: September, 2016
Data Collection Date Range: January 2016 - March 2016

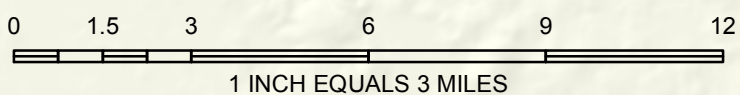
MAP COMPOSITION
September 2014



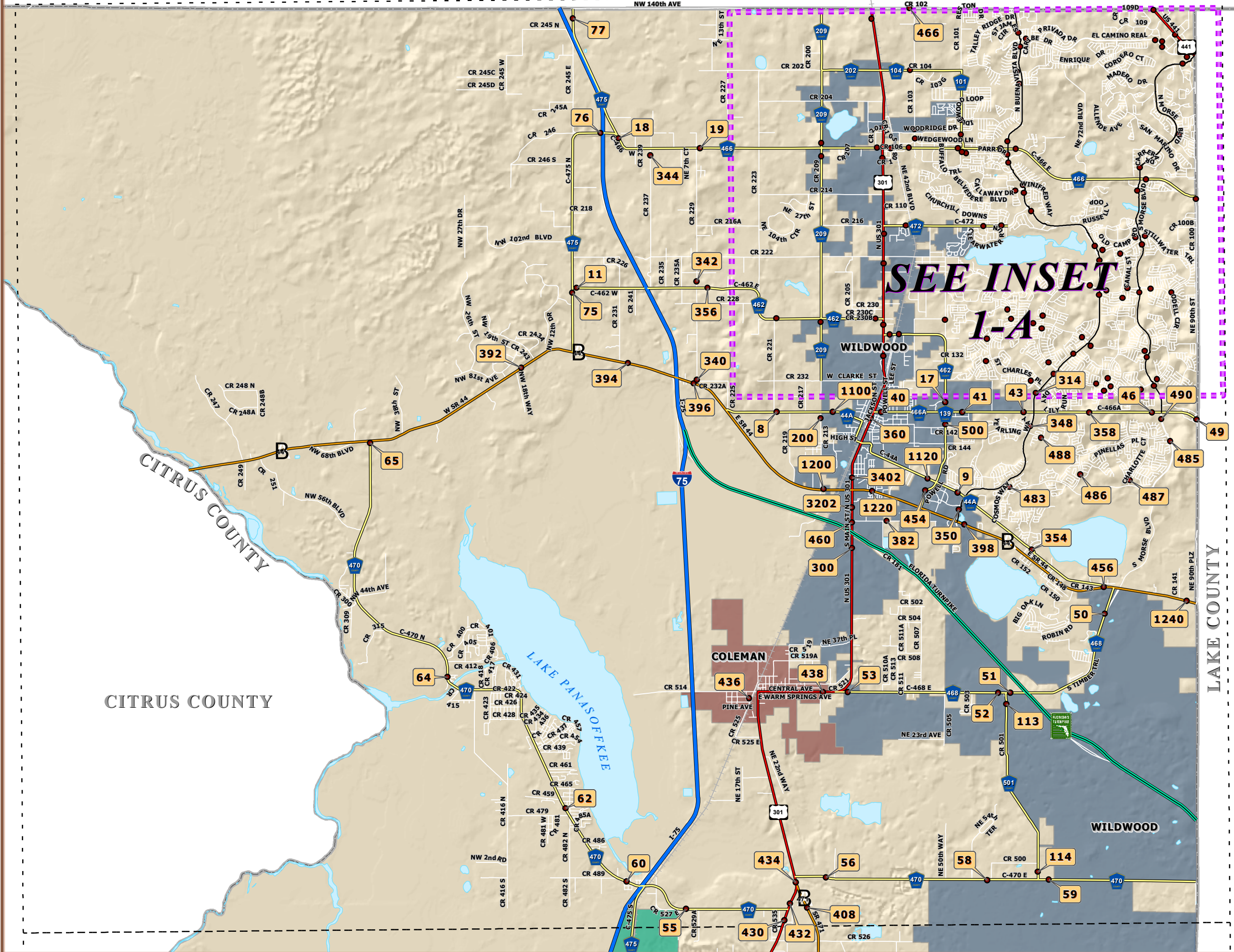
DATA SOURCES:

Planimetrics by Sumter County GIS Department.
2016 Traffic Counts data collection, compilation
and map production by Quality Countss, LLC
in cooperation with the Lake~Sumter MPO.

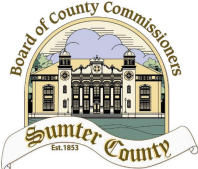
This map product was prepared from a Geographic Information System established by HDR and the Lake~Sumter Metropolitan Planning Organization. Its employees, agents and personnel, make no warranty as to its accuracy, and in particular its accuracy as to labeling, dimensions, contours, property boundaries, or placement or location of any map features thereon. The Lake~Sumter Metropolitan Planning Organization and its employees, agents and personnel MAKE NO WARRANTY OF MERCHANTABILITY OR WARRANTY FOR FITNESS OF USE FOR A PARTICULAR PURPOSE EXPRESS OR IMPLIED WITH RESPECT TO THIS MAP PRODUCT. Independent verification of all data contained on this map product should be obtained by any user of this map. ** City Limit boundaries are subject to change and do not necessarily reflect annexations which have occurred. These maps are the official Sumter County Traffic Counts Map Series and are kept on file for viewing in Sumter County Public Works.



MARION COUNTY



2016 SUMTER COUNTY ANNUAL TRAFFIC COUNTS MAP SERIES



Station ID

LEGEND

- County Road
- State Road
- US Highway
- Interstate
- Turnpike
- Active Railroad
- Water Body
- County Boundary

Incorporated Area

- Bushnell
- Center Hill
- Coleman
- Webster
- Wildwood

MAP SHEET COUNTY LINE

MAP

** City Limit boundaries are subject to change and do not necessarily reflect annexations which have occurred. These maps are the official Sumter County Traffic Counts Map Series and are kept on file for viewing in Sumter County Public Works.

DATA SOURCES:
 Planimetrics by Sumter County GIS Department.
 2016 Traffic Counts data collection, compilation and map production by Quality Counts, LLC in cooperation with the Lake-Summer MPO.

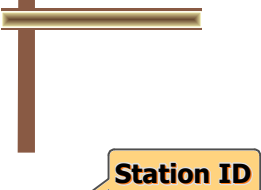
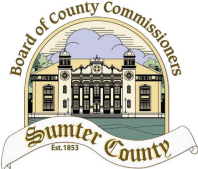
This map product was prepared from a Geographic Information System established by HDR and the Lake-Summer Metropolitan Planning Organization. Its employees, agents and personnel, make no warranty as to its accuracy, and in particular its accuracy as to labeling, dimensions, contours, property boundaries, or placement or location of any map features thereon. The Lake-Summer Metropolitan Planning Organization and its employees, agents and personnel MAKE NO WARRANTY OF MERCHANTABILITY OR WARRANTY FOR FITNESS OF USE FOR A PARTICULAR PURPOSE EXPRESS OR IMPLIED WITH RESPECT TO THIS MAP PRODUCT. Independent verification of all data contained on this map product should be obtained by any user of this map.

MAP SERIES INDEX

MAP SHEET 1

Lake-Summer MPO
 Metropolitan Planning Organization

2016 SUMTER COUNTY ANNUAL TRAFFIC COUNTS MAP SERIES



LEGEND

- County Road
- State Road
- US Highway
- Interstate
- Turnpike
- Active Railroad
- Water Body
- County Boundary

Incorporated Area

- Bushnell
- Center Hill
- Coleman
- Webster
- Wildwood

** City Limit boundaries are subject to change and do not necessarily reflect annexations which have occurred. These maps are the official Sumter County Traffic Counts Map Series and are kept on file for viewing in Sumter County Public Works.

DATA SOURCES:
 Planimetrics by Sumter County GIS Department.
 2016 Traffic Counts data collection, compilation and map production by Quality Counts, LLC in cooperation with the Lake-Sumter MPO.

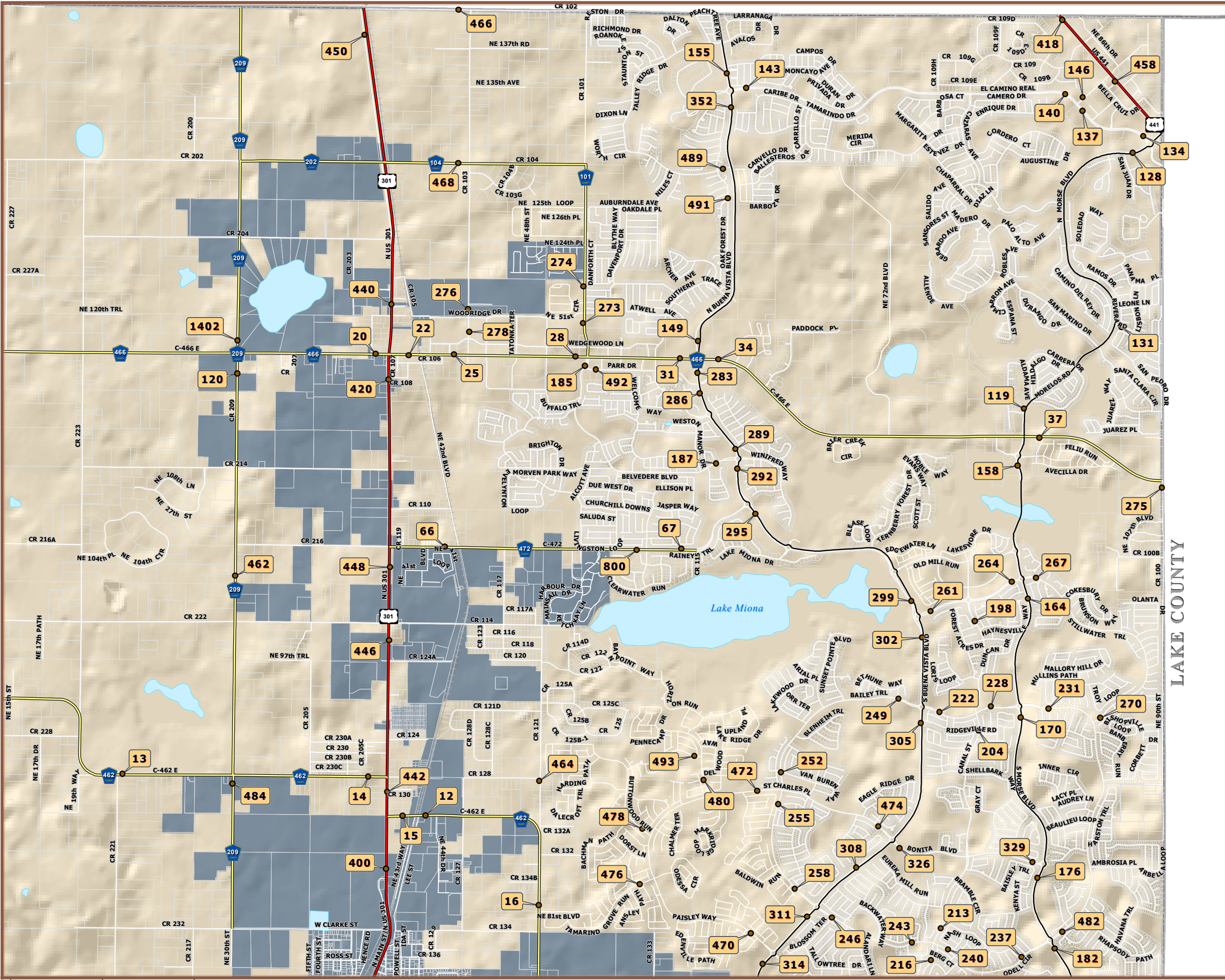
This map product was prepared from a Geographic Information System established by HDR and the Lake-Sumter Metropolitan Planning Organization. Its employees, agents and personnel, make no warranty as to its accuracy, and in particular its accuracy as to labeling, dimensions, contours, property boundaries, or placement or location of any map features thereon. The Lake-Sumter Metropolitan Planning Organization and its employees, agents and personnel MAKE NO WARRANTY OF MERCHANTABILITY OR WARRANTY FOR FITNESS OF USE FOR A PARTICULAR PURPOSE EXPRESS OR IMPLIED WITH RESPECT TO THIS MAP PRODUCT. Independent verification of all data contained on this map product should be obtained by any user of this map.



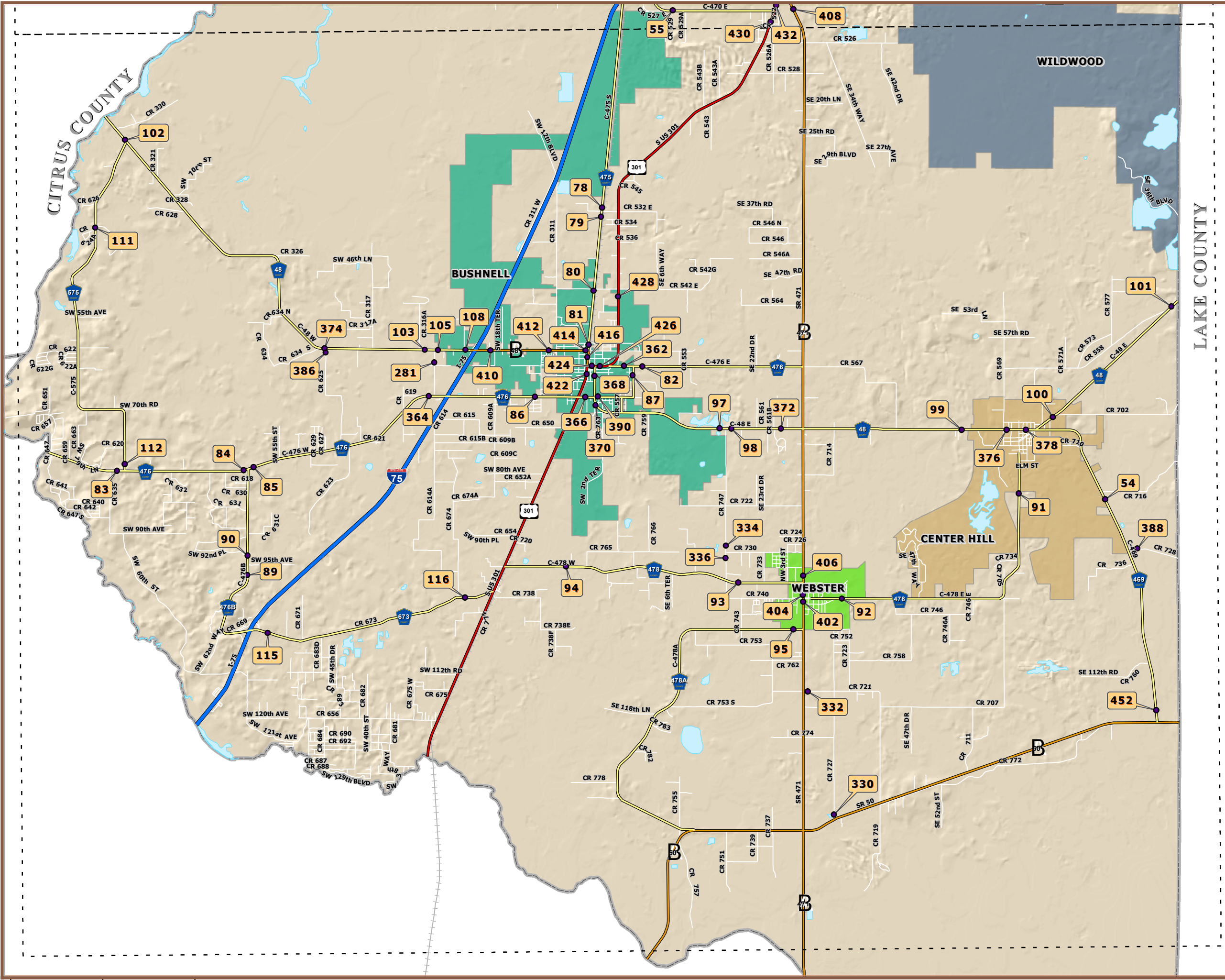
MAP SERIES INDEX



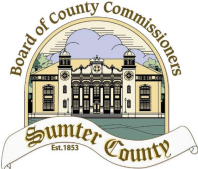
MAP INSET
1-A



0 0.3 0.6 1.2 1 inch equals 0.6 Miles



2016 SUMTER COUNTY ANNUAL TRAFFIC COUNTS MAP SERIES



Station ID

LEGEND

- County Road
- State Road
- US Highway
- Interstate
- Turnpike
- Active Railroad
- Water Body
- County Boundary

MAP

MAP SHEET COUNTY LINE

Incorporated Area

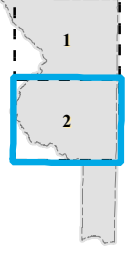
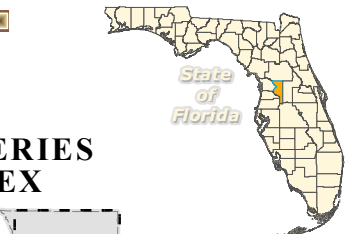
- Bushnell
- Center Hill
- Coleman
- Webster
- Wildwood

** City Limit boundaries are subject to change and do not necessarily reflect annexations which have occurred. These maps are the official Sumter County Traffic Counts Map Series and are kept on file for viewing in Sumter County Public Works.

DATA SOURCES:
 Planimetrics by Sumter County GIS Department.
 2016 Traffic Counts data collection, compilation and map production by Quality Counts, LLC in cooperation with the Lake-Sumter MPO.

This map product was prepared from a Geographic Information System established by HDR and the Lake-Sumter Metropolitan Planning Organization. Its employees, agents and personnel, make no warranty as to its accuracy, and in particular its accuracy as to labeling, dimensions, contours, property boundaries, or placement or location of any map features thereon. The Lake-Sumter Metropolitan Planning Organization and its employees, agents and personnel MAKE NO WARRANTY OF MERCHANTABILITY OR WARRANTY FOR FITNESS OF USE FOR A PARTICULAR PURPOSE EXPRESS OR IMPLIED WITH RESPECT TO THIS MAP PRODUCT. Independent verification of all data contained on this map product should be obtained by any user of this map.

MAP SERIES INDEX



MAP SHEET 2



**Sumter County Annual Traffic Counts
2016 Volumes Summary**

Sta ID	Street	Location Description	Start Date	Duration	ADT						A.M. Peak Hour						P.M. Peak Hour						# of Lanes	Posted Speed	Golf Cart	
					2011	2012	2013	2014	2015	2016	Time	Total	NB/EB	SB/WB	'K'	'D'	Time	Total	NB/EB	SB/WB	'K'	'D'			2015	2016
8	C-44A	150' East of CR 221(West of US 301)	02/11/16	24-HR	1,046	995	3,110	816	1,077	1,301	7:30 AM	71	44	27	5.5%	62.0%	3:45 PM	139	56	83	10.7%	59.7%	2	35	--	--
9	C-44A	500' West of Buena Vista Boulevard	03/17/16	24-HR	1,313	1,428	2,324	4,180	5,621	6,127	8:45 AM	414	169	245	6.8%	59.2%	3:15 PM	487	264	223	7.9%	54.2%	4	35	--	--
11	C-462W	400' East of C-475N	02/04/16	24-HR	515	692	488	621	587	498	9:00 AM	51	6	12	10.2%	66.7%	3:30 PM	55	13	42	11.0%	76.4%	2	45	--	--
12	C-462E	275' East of CR 131	--	24-HR	6,005	6,718	7,701	10,839	10,024	*****	--	--	--	--	--	--	--	--	--	--	--	2	35	--	--	
13	C-462E	20' East of CR 221	02/04/16	24-HR	2,261	2,196	2,138	2,291	2,540	2,502	9:00 AM	195	55	45	7.8%	55.0%	3:45 PM	247	82	165	9.9%	66.8%	2	45	--	--
14	C-462E	500' West of US 301	02/03/16	24-HR	2,326	2,456	2,458	2,450	2,856	3,109	9:00 AM	250	86	77	8.0%	52.8%	3:30 PM	268	82	186	8.6%	69.4%	2	55	--	--
15	C-462E	200' East of US 301	02/04/16	24-HR	5,104	5,965	6,562	8,545	9,051	8,865	9:00 AM	705	260	314	8.0%	54.7%	3:15 PM	829	327	502	9.4%	60.6%	2	45	--	--
16	C-462E	200' N. of NE 81 st. Blvd.	--	24-HR	6,655	7,379	8,043	10,713	10,750	*****	--	--	--	--	--	--	--	--	--	--	--	2	45	--	--	
17	C-462E	500' North of C-466A	02/11/16	24-HR	5,514	7,706	8,553	11,194	11,688	10,926	9:00 AM	897	332	405	8.2%	55.0%	3:15 PM	989	566	423	9.1%	57.2%	2	45	--	--
18	C-466W	300' South of C-475N	02/04/16	24-HR	4,457	4,488	4,680	4,670	4,898	5,067	9:00 AM	439	117	156	8.7%	57.1%	3:45 PM	419	259	145	8.3%	64.1%	2	45	--	--
19	C-466E	250' East of CR 229	02/04/16	24-HR	4,854	4,922	5,257	5,232	6,028	6,721	9:00 AM	579	196	173	8.6%	53.1%	3:15 PM	527	224	303	7.8%	57.5%	2	55	--	--
20	C-466E	450' West of US 301	01/19/16	24-HR	6,374	6,253	6,471	7,325	7,676	7,117	9:00 AM	600	230	143	8.4%	61.7%	3:45 PM	571	222	342	8.0%	60.6%	2	35	--	--
22	C-466E	300' West of R/R	01/19/16	24-HR	20,725	22,379	19,345	22,576	25,799	24,533	9:00 AM	1,720	847	582	7.0%	59.3%	3:45 PM	2,109	855	1,110	8.6%	56.5%	5	45	--	--
25	C-466E	300' West of CR 103	01/20/16	24-HR	18,330	19,385	17,855	20,358	21,891	20,927	9:00 AM	1,440	627	557	6.9%	53.0%	3:45 PM	1,979	858	979	9.5%	53.3%	5	45	--	--
28	C-466E	200' West of CR 101	01/20/16	24-HR	23,112	24,236	24,398	24,914	27,634	26,232	9:00 AM	1,883	689	777	7.2%	53.0%	3:45 PM	2,432	1,037	1,232	9.3%	54.3%	5	45	--	--
31	C-466E	400' W. of Buena Vista Blvd.	01/20/16	24-HR	28,100	29,813	18,014	30,289	21,946	31,540	9:00 AM	2,204	835	1,038	7.0%	55.4%	3:45 PM	2,836	1,195	1,394	9.0%	53.8%	4	45	--	--
34	C-466E	500' E. of Buena Vista Blvd.	01/20/16	24-HR	22,727	23,914	20,988	23,900	22,604	25,097	9:00 AM	1,626	717	778	6.5%	52.0%	3:45 PM	2,267	962	1,092	9.0%	53.2%	4	45	--	--
37	C-466E	500' East of Morse Blvd.	01/14/16	24-HR	24,085	25,790	29,401	25,854	28,037	27,929	9:00 AM	1,768	970	782	6.3%	55.4%	3:45 PM	2,624	1,125	1,274	9.4%	53.1%	4	45	--	--
40	C-466A (Cleveland)	150' East of US 301	02/11/16	24-HR	7,870	6,379	7,997	0	4,402	9,163	9:00 AM	649	384	265	7.1%	59.2%	3:45 PM	815	377	394	8.9%	51.1%	2	30	--	--
41	C-466A	500' East of CR 139	02/11/16	24-HR	9,695	7,006	13,132	15,222	16,304	19,085	9:00 AM	1,379	650	725	7.2%	52.7%	3:30 PM	1,677	904	773	8.8%	53.9%	5	45	--	--
43	C-466A	500' W. of Buena Vista Blvd.	03/17/16	24-HR	10,244	13,638	13,429	15,724	18,289	19,781	8:45 AM	1,380	615	765	7.0%	55.4%	3:30 PM	1,605	835	770	8.1%	52.0%	4	45	--	--
46	C-466A	300' W. of Morse Blvd.	01/28/16	24-HR	11,433	13,107	12,288	15,099	15,696	16,403	8:45 AM	1,096	595	501	6.7%	54.3%	3:45 PM	1,319	618	652	8.0%	51.3%	4	45	--	--
49	C-466A	50' W. of Lake County Line	02/16/16	24-HR	12,307	13,318	14,490	16,441	17,960	18,515	8:15 AM	1,271	630	641	6.9%	50.4%	3:30 PM	1,509	671	838	8.2%	55.5%	2	45	--	--
50	C-468	1400' South of SR 44E	02/16/16	24-HR	3,755	3,841	3,392	3,670	4,401	4,638	9:00 AM	311	178	133	6.7%	57.2%	3:15 PM	400	169	231	8.6%	57.8%	2	45	--	--
51	C-468	500' East of CR 501	02/17/16	24-HR	2,789	2,638	2,682	2,956	3,119	3,587	9:00 AM	268	95	67	7.5%	58.6%	3:45 PM	353	175	178	9.8%	50.4%	2	55	--	--
52	C-468	500' West of CR 501	02/17/16	24-HR	2,369	2,117	2,373	2,329	2,359	2,703	9:00 AM	214	73	45	7.9%	61.9%	3:15 PM	304	132	172	11.2%	56.6%	2	55	--	--
53	C-468	400' East of US 301	02/17/16	24-HR	3,039	3,063	2,980	2,987	3,052	3,146	9:00 AM	251	64	73	8.0%	53.3%	3:45 PM	263	112	151	8.4%	57.4%	2	45	--	--
54	C-469	2640' South of CR 716	03/03/16	24-HR	1,981	1,747	1,749	1,917	2,231	2,596	7:30 AM	190	109	81	7.3%	57.4%	3:45 PM	193	101	92	7.4%	52.3%	2	55	--	--
55	C-470E	300' East of CR 529	02/17/16	24-HR	7,117	6,990	7,229	7,763	7,856	9,859	9:00 AM	750	285	286	7.6%	50.1%	3:15 PM	738	317	421	7.5%	57.0%	2	55	--	--
56	C-470E	500' West of Dixie Lime	03/16/16	24-HR	6,552	5,870	6,545	6,044	6,515	7,597	9:00 AM	557	230	193	7.3%	54.4%	3:30 PM	681	290	391	9.0%	57.4%	2	55	--	--
58	C-470E	300' West of CR 500	02/17/16	24-HR	6,422	6,157	5,451	6,404	6,630	7,987	9:00 AM	706	232	219	8.8%	51.4%	3:30 PM	689	377	312	8.6%	54.7%	2	55	--	--
59	C-470E	300' East of CR 501	03/17/16	24-HR	5,642	5,742	5,068	6,368	6,856	7,905	9:00 AM	603	260	203	7.6%	56.2%	3:30 PM	628	364	264	7.9%	58.0%	2	55	--	--
60	C-470N	200' North/West of CR 491	03/17/16	24-HR	8,092	7,808	6,411	7,337	8,936	7,731	7:30 AM	632	420	212	8.2%	66.5%	3:45 PM	630	211	419	8.1%	66.5%	2	35	--	--
62	C-470N	300' North CR 479	02/17/16	24-HR	6,903	6,426	7,584	6,049	6,188	6,856	9:00 AM	463	170	212	6.8%	55.5%	3:45 PM	561	343	218	8.2%	61.1%	2	45	--	--
64	C-470N	1320' South of CR 400	02/17/16	24-HR	3,547	2,665	3,099	3,069	3,113	3,607	7:30 AM	236	119	117	6.5%	50.4%	3:45 PM	343	183	160	9.5%	53.4%	2	45	--	--
65	C-470N	300' South of SR 44W	02/17/16	24-HR	2,458	2,418	2,242	2,340	2,511	2,891	9:00 AM	212	82	63	7.3%	56.6%	3:45 PM	278	126	152	9.6%	54.7%	2	55	--	--
66	C-472	325' West of RR Tracks	02/04/16	24-HR	3,755	3,139	3,521	4,447	4,590	4,562	9:00 AM	512	222	82	11.2%	73.0%	3:30 PM	383	274	109	8.4%	71.5%	2	35	--	--
67	C-472	500' West of CR 115	03/17/16	24-HR	4,619	4,587	4,359	5,984	6,195	5,845	7:30 AM	461	336	125	7.9%	72.9%	3:45 PM	464	222	242	7.9%	52.2%	2	35	--	--
75	C-475N	700' South of C-462W	03/17/16	24-HR	2,771	2,931	2,758	3,046	3,603	3,595	9:00 AM	275	94	99	7.6%	51.3%	3:45 PM	272	117	155	7.6%	57.0%	2	55	--	--
76	C-475N	1500' West of C-466W	02/04/16	24-HR	2,801	2,730	2,910	2,855	3,082	3,283	9:00 AM	276	90	73	8.4%	55.2%	3:30 PM	273	120	153	8.3%	56.0%	2	50	--	--
77	C-475N	1320' South of Marion Co	02/17/16	24-HR	4,255	6,962	3,916	4,223	4,325	5,297	9:00 AM	409	122	163	7.7%	57.2%	3:45 PM	445	257	188	8.4%	57.8%	2	55	--	--

**Sumter County Annual Traffic Counts
2016 Volumes Summary**

Sta ID	Street	Location Description	Start Date	Duration	ADT						A.M. Peak Hour						P.M. Peak Hour						# of Lanes	Posted Speed	Golf Cart	
					2011	2012	2013	2014	2015	2016	Time	Total	NB/EB	SB/WB	'K'	'D'	Time	Total	NB/EB	SB/WB	'K'	'D'			2015	2016
78	C-475S	200' North of CR 532W	02/17/16	24-HR	3,611	3,846	3,795	3,399	3,993	4,554	9:00 AM	316	112	124	6.9%	52.5%	3:30 PM	380	203	177	8.3%	53.4%	2	55	--	--
79	C-475S	2500' South of CR 532W	02/17/16	24-HR	4,199	4,210	4,447	5,192	4,656	5,114	9:00 AM	335	137	144	6.6%	51.2%	3:30 PM	447	223	224	8.7%	50.1%	2	55	--	--
80	C-475S	100' South of CR 542	02/25/16	24-HR	5,030	5,135	5,818	4,335	5,163	6,095	9:00 AM	476	187	204	7.8%	52.2%	3:30 PM	558	288	270	9.2%	51.6%	4	45	--	--
81	C-475S	500' North of SR 48W	02/25/16	24-HR	9,062	9,310	8,596	8,600	9,174	10,104	9:00 AM	835	295	314	8.3%	51.6%	3:30 PM	1,020	400	620	10.1%	60.8%	5	35	--	--
82	C-476E	500' East of C-476A	02/25/16	24-HR	1,734	1,906	1,934	1,760	2,105	2,143	9:00 AM	172	52	60	8.0%	53.6%	3:45 PM	233	120	113	10.9%	51.5%	2	45	--	--
83	C-476W	500' West of C-575	03/17/16	24-HR	3,034	3,028	3,049	2,889	3,037	3,641	9:00 AM	240	101	76	6.6%	57.1%	3:45 PM	293	118	175	8.0%	59.7%	2	55	--	--
84	C-476W	100' West of C-476B	03/03/16	24-HR	3,381	3,848	3,631	3,653	3,915	4,409	9:00 AM	315	140	113	7.1%	55.3%	3:45 PM	369	124	245	8.4%	66.4%	2	45	--	--
85	C-476W	100' East of C-476B	03/03/16	24-HR	3,312	3,683	3,517	3,598	3,673	4,428	9:00 AM	327	128	105	7.4%	54.9%	3:45 PM	371	158	213	8.4%	57.4%	2	45	--	--
86	C-476W	500' West of CR 603	02/25/16	24-HR	4,272	4,219	4,247	3,905	4,145	4,591	9:00 AM	401	128	104	8.7%	55.2%	3:45 PM	419	167	252	9.1%	60.1%	2	45	--	--
87	C-476A	2000' South of C-476E	02/04/16	24-HR	504	542	493	490	419	490	9:00 AM	78	17	14	15.9%	54.8%	3:45 PM	54	35	19	11.0%	64.8%	2	35	--	--
89	C-476B	1000' South of S.C.I.	03/03/16	24-HR	1,576	1,580	1,727	1,538	1,832	1,871	9:00 AM	163	45	50	8.7%	52.6%	3:45 PM	151	76	75	8.1%	50.3%	2	45	--	--
90	C-476B	1500' North of S.C.I.	03/03/16	24-HR	1,721	1,679	1,699	n/a	1,900	2,020	9:00 AM	200	43	53	9.9%	55.2%	3:45 PM	173	127	46	8.6%	73.4%	2	45	--	--
91	C-478E	1 Mile South of C-48E	03/03/16	24-HR	869	1,098	887	1,085	1,052	1,083	9:00 AM	87	24	19	8.0%	55.8%	3:45 PM	90	39	51	8.3%	56.7%	2	55	--	--
92	C-478E	200' East of Ball Park	03/03/16	24-HR	1,793	1,779	1,641	1,679	1,703	1,715	9:00 AM	104	25	38	6.1%	60.3%	3:45 PM	159	81	78	9.3%	50.9%	2	35	--	--
93	C-478E	1 Mile West of SR 471	03/31/16	24-HR	1,744	1,661	1,541	1,123	1,514	1,574	7:30 AM	168	110	58	10.7%	65.5%	3:30 PM	126	67	59	8.0%	53.2%	2	55	--	--
94	C-478W	1 Mile East of US 301	03/03/16	24-HR	2,056	1,989	1,900	1,840	1,900	2,298	9:00 AM	172	56	54	7.5%	50.9%	3:45 PM	188	101	87	8.2%	53.7%	2	55	--	--
95	C-478A	500' West of SR 471	03/31/16	24-HR	612	625	575	834	812	716	7:30 AM	72	48	24	10.1%	66.7%	3:45 PM	46	21	25	6.4%	54.3%	2	55	--	--
97	C-48E	500' West of CR 747	03/17/16	24-HR	5,579	5,912	5,292	6,146	5,883	6,058	9:00 AM	489	151	151	8.1%	50.0%	3:45 PM	506	247	259	8.4%	51.2%	2	55	--	--
98	C-48E	300' East of CR 747	02/25/16	24-HR	4,575	4,900	4,341	5,138	4,798	5,797	9:00 AM	421	150	196	7.3%	56.6%	3:45 PM	415	206	209	7.2%	50.4%	3	55	--	--
99	C-48E	300' West of Old RR Tracks	03/03/16	24-HR	4,291	4,241	4,410	4,967	5,944	5,412	9:00 AM	347	137	125	6.4%	52.3%	3:45 PM	437	230	207	8.1%	52.6%	2	55	--	--
100	C-48E	500' West of CR 702	03/03/16	24-HR	2,437	2,698	2,694	3,222	3,173	3,320	9:00 AM	236	101	90	7.1%	52.9%	3:45 PM	254	114	136	7.7%	54.4%	2	35	--	--
101	C-48E	50' NE of CR 558	03/03/16	24-HR	1,301	2,268	2,115	2,309	2,428	2,610	9:00 AM	184	81	69	7.0%	54.0%	3:45 PM	201	86	115	7.7%	57.2%	2	55	--	--
102	C-48W	100' West of C-575	02/25/16	24-HR	3,277	3,863	3,398	3,281	3,713	3,770	9:00 AM	266	81	122	7.1%	60.1%	3:45 PM	326	128	198	8.6%	60.7%	2	45	--	--
103	C-48W	400' West of CR 616	02/25/16	24-HR	4,754	5,306	4,778	5,080	5,329	5,453	9:00 AM	361	141	146	6.6%	50.9%	3:45 PM	492	191	301	9.0%	61.2%	2	45	--	--
105	C-48W	250' East of CR 616	02/25/16	24-HR	7,004	7,437	5,776	7,167	8,246	8,877	9:00 AM	541	215	244	6.1%	53.2%	3:45 PM	774	284	490	8.7%	63.3%	5	45	--	--
108	C-48W	150' East of CR 313	02/25/16	24-HR	8,174	8,740	8,457	8,956	9,111	8,596	9:00 AM	485	216	188	5.6%	53.5%	3:45 PM	706	294	412	8.2%	58.4%	5	45	--	--
111	C-575	1.5 Miles South of C-48W	02/25/16	24-HR	643	651	637	602	599	602	9:00 AM	46	13	7	7.6%	65.0%	3:30 PM	45	22	23	7.5%	51.1%	2	55	--	--
112	C-575	300' North of C-476W	--	24-HR	793	848	808	801	917	*****	--	--	--	--	--	--	--	--	--	--	--	2	55	--	--	
113	C-501	780' South of C-468	02/17/16	24-HR	2,390	2,295	2,304	2,376	2,612	3,021	9:00 AM	277	59	60	9.2%	50.4%	3:30 PM	298	171	127	9.9%	57.4%	2	55	--	--
114	C-501	200' North of CR 500	--	24-HR	1,916	2,238	2,260	2,340	2,581	*****	--	--	--	--	--	--	--	--	--	--	--	2	45	--	--	
115	C-673	400' East of I-75	03/03/16	24-HR	1,693	1,557	1,438	1,503	2,224	2,078	9:00 AM	141	56	68	6.8%	54.8%	3:15 PM	146	80	66	7.0%	54.8%	2	45	--	--
116	C-673	1000' East of CR 674	03/03/16	24-HR	1,301	1,564	1,202	1,300	1,389	1,723	9:00 AM	126	63	43	7.3%	59.4%	3:45 PM	137	72	65	8.0%	52.6%	2	40	--	--
119	N. Morse Blvd	150' N of C-466E Gate	01/14/16	24-HR	19,621	18,077	15,510	19,109	21,272	19,149	9:00 AM	1,364	705	659	7.1%	51.7%	3:45 PM	1,669	674	813	8.7%	54.7%	2	35	4,524	2,249
128	N. Morse Blvd.	300' S of Morse Crl	01/14/16	24-HR	11,205	9,198	10,857	11,903	10,057	12,669	9:00 AM	1,036	606	430	8.2%	58.5%	3:15 PM	1,119	526	593	8.8%	53.0%	4	35	731	*****
131	Rio Grande Ave	200' E of Morse Blvd	01/14/16	24-HR	8,211	6,008	8,168	8,004	8,782	7,708	9:00 AM	510	273	237	6.6%	53.5%	3:45 PM	648	228	352	8.4%	60.7%	2	25	3,721	1,621
134	El Camino Real	200' W of Morse Crl	01/14/16	24-HR	14,206	13,268	15,616	13,390	10,932	13,335	9:00 AM	1,024	502	522	7.7%	51.0%	3:45 PM	1,139	508	452	8.5%	52.9%	2	20	--	--
137	El Camino Real	200' E of Buenos Aires Blvd	01/28/16	24-HR	12,299	12,864	17,960	12,994	10,158	13,166	9:00 AM	989	565	424	7.5%	57.1%	3:45 PM	1,160	450	623	8.8%	58.1%	4	35	--	--
140	El Camino Real	200' W. of Buenos Aires Blvd	01/28/16	24-HR	15,801	18,533	10,568	19,294	20,496	18,939	9:00 AM	1,493	908	585	7.9%	60.8%	3:45 PM	1,637	562	884	8.6%	61.1%	4	35	--	--
143	El Camino Real	300' E of Buena Vista Crl	01/19/16	24-HR	17,097	16,801	14,773	16,646	16,187	20,330	9:00 AM	1,453	752	701	7.1%	51.8%	3:45 PM	1,864	661	1,127	9.2%	63.0%	4	35	--	--
146	Buenos Aires	200' N. of El Camino Real	01/14/16	24-HR	10,906	11,585	12,712	11,277	13,430	11,120	9:00 AM	822	467	355	7.4%	56.8%	3:45 PM	1,048	356	492	9.4%	58.0%	4	30	--	--
149	N. Buena Vista	400' N of C-466E	01/20/16	24-HR	17,433	17,570	15,153	17,643	19,601	18,886	8:45 AM	1,409	754	655	7.5%	53.5%	3:45 PM	1,565	676	816	8.3%	54.7%	4	35	--	--

**Sumter County Annual Traffic Counts
2016 Volumes Summary**

Sta ID	Street	Location Description	Start Date	Duration	ADT						A.M. Peak Hour						P.M. Peak Hour						# of Lanes	Posted Speed	Golf Cart	
					2011	2012	2013	2014	2015	2016	Time	Total	NB/EB	SB/WB	'K'	'D'	Time	Total	NB/EB	SB/WB	'K'	'D'			2015	2016
155	N. Buena Vista	300' N of Circle	01/19/16	24-HR	16,667	16,146	17,058	15,471	13,140	15,861	9:00 AM	1,182	514	668	7.5%	56.5%	3:45 PM	1,368	695	571	8.6%	54.9%	4	35	--	--
158	S. Morse Blvd	200' S. of Mariposa Way	01/14/16	24-HR	20,989	26,188	21,365	26,665	29,320	28,674	9:00 AM	2,016	1,158	858	7.0%	57.4%	3:15 PM	2,483	1,096	1,387	8.7%	55.9%	4	35	--	--
164	S. Morse Blvd	200' S. of Stillwater Trail	01/14/16	24-HR	12,120	13,232	10,636	14,710	16,098	16,098	9:00 AM	1,125	689	436	7.0%	61.2%	3:15 PM	1,466	643	823	9.1%	56.1%	4	35	--	--
170	S.Morse Blvd.	200' S of N. Odell Circle	01/14/16	24-HR	7,232	8,199	7,166	10,100	11,726	11,977	9:00 AM	853	506	347	7.1%	59.3%	3:45 PM	1,100	446	545	9.2%	55.0%	4	35	--	--
176	S. Morse Blvd	200' S. of Bonita Blvd	01/28/16	24-HR	7,622	8,688	7,589	10,258	12,576	13,083	8:45 AM	905	507	398	6.9%	56.0%	3:45 PM	1,162	521	577	8.9%	52.6%	4	35	--	--
182	S.Morse Blvd.	200' S. of S. Odell Circle	01/28/16	24-HR	12,830	13,918	12,164	17,380	15,079	20,515	9:00 AM	1,462	684	778	7.1%	53.2%	3:45 PM	1,869	907	808	9.1%	52.9%	4	35	--	--
185	Belvedere Blvd.	200' S. of C-466E	01/20/16	24-HR	12,447	9,253	8,197	9,456	7,888	13,169	9:00 AM	782	431	311	5.9%	58.1%	3:45 PM	1,251	507	573	9.5%	53.1%	2	30	2,774	*****
187	Belvedere Blvd.	200' W. of Buena Vista Blvd	01/20/16	24-HR	8,473	5,898	7,432	6,384	6,269	6,029	9:00 AM	410	220	190	6.8%	53.7%	3:45 PM	511	215	239	8.5%	52.6%	2	30	3,689	2,441
198	Canal St	200' S of Stillwater Trl	01/28/16	24-HR	6,183	4,740	5,800	4,911	3,623	4,909	9:00 AM	351	195	156	7.2%	55.6%	3:45 PM	451	181	202	9.2%	52.7%	2	35	2,234	1,102
204	Canal St	200' S. of N. Odell Circle	01/28/16	24-HR	8,706	5,375	6,614	5,519	5,429	6,666	9:00 AM	482	288	194	7.2%	59.8%	3:45 PM	564	222	271	8.5%	55.0%	2	30	2,099	*****
213	Canal St	200' N. of S. Odell Circle	02/11/16	24-HR	5,131	3,439	4,455	3,501	3,629	3,391	9:00 AM	256	137	112	7.5%	55.0%	3:15 PM	287	159	128	8.5%	55.4%	2	20	1,987	*****
216	Canal St	200' S. of S. Odell Circle	02/04/16	24-HR	3,030	2,318	2,766	2,764	2,778	3,246	9:00 AM	290	131	159	8.9%	54.8%	3:45 PM	270	154	61	8.3%	71.6%	2	25	1,004	*****
222	Odell Circle	200' E of Buena Vista Blvd N. End	1/14/2016	24-HR	5,472	3,993	3,957	3,786	3,694	3,815	8:45 AM	302	144	158	7.9%	52.3%	3:30 PM	328	185	143	8.6%	56.4%	2	30	2,139	1,332
228	Odell Circle	200' W. of S. Morse Blvd	01/28/16	24-HR	4,511	2,273	4,480	4,129	2,988	5,078	9:00 AM	341	249	53	6.7%	82.5%	3:45 PM	381	177	204	7.5%	53.5%	2	30	1,814	*****
231	Odell Circle	200' E of S. Morse Blvd gate (N. end)	01/14/16	24-HR	6,645	5,123	5,131	5,401	5,209	6,976	8:45 AM	511	182	329	7.3%	64.4%	3:45 PM	604	306	281	8.7%	52.1%	2	25	1,786	*****
237	Odell Circle	200' W of S Morse Blvd gate (S. end)	02/11/16	24-HR	7,491	4,796	5,248	4,681	4,811	4,957	9:00 AM	347	199	148	7.0%	57.3%	3:15 PM	470	208	262	9.5%	55.7%	2	25	3,100	2,441
240	Odell Circle	200' E. of Canal St	02/11/16	24-HR	8,586	4,572	5,674	5,073	4,818	5,029	9:00 AM	414	250	144	8.2%	63.5%	3:45 PM	454	229	197	9.0%	53.8%	2	35	3,006	*****
243	Odell Circle	200' W. of Canal St	03/17/16	24-HR	8,055	4,042	4,008	4,544	3,007	6,540	9:00 AM	426	232	194	6.5%	54.5%	3:45 PM	531	211	265	8.1%	55.7%	2	30	2,949	*****
246	Odell Circle	200' E. of S. Buena Vista Blvd	02/11/16	24-HR	6,448	4,372	5,598	4,768	2,916	4,722	9:00 AM	343	134	209	7.3%	60.9%	3:45 PM	380	207	142	8.0%	59.3%	2	25	2,948	1,856
249	Bailey Trail	200' W of S Buena Vista Blvd (N. end)	01/14/16	24-HR	9,602	3,516	10,774	10,420	8,014	10,034	9:00 AM	730	446	284	7.3%	61.1%	3:45 PM	864	370	494	8.6%	57.2%	2	25	3,277	2,544
252	Bailey Trail	200 N of St. Charles Place	01/28/16	24-HR	9,961	8,560	3,447	8,630	7,810	8,070	8:45 AM	594	380	214	7.4%	64.0%	3:30 PM	676	250	426	8.4%	63.0%	2	30	2,162	*****
255	Bailey Trail	200' S of St. Charles Place	01/28/16	24-HR	4,138	2,804	9,374	2,785	1,624	2,952	9:00 AM	228	129	99	7.7%	56.6%	3:30 PM	254	125	129	8.6%	50.8%	2	20	1,658	*****
258	Bailey Trail	200' W of S. Buena Vista Blvd (S. End)	02/04/16	24-HR	5,043	3,118	3,462	4,203	5,197	5,078	9:00 AM	420	243	177	8.3%	57.9%	3:45 PM	385	154	193	7.6%	55.6%	2	20	1,792	*****
261	Stillwater Trail	200' E of S. Buena Vista Blvd	01/14/16	24-HR	10,328	9,756	8,736	9,958	10,924	11,122	9:00 AM	827	486	341	7.4%	58.8%	3:45 PM	940	410	490	8.5%	54.4%	4	35	4,888	*****
264	Stillwater Trail	200' W of S. Morse Blvd	01/14/16	24-HR	9,170	9,408	9,262	226	9,098	10,981	9:00 AM	774	417	357	7.0%	53.9%	3:15 PM	925	418	507	8.4%	54.8%	4	20	829	736
267	Stillwater Trail	200' E. of S. Morse Blvd gate	01/14/16	24-HR	6,590	3,665	7,598	5,116	5,039	5,762	9:00 AM	401	137	264	7.0%	65.8%	3:45 PM	523	317	181	9.1%	63.7%	2	20	1,666	*****
270	Stillwater Trail	200' E. of Odell Circle	01/14/16	24-HR	3,756	2,601	3,416	3,326	2,193	3,740	9:00 AM	260	147	113	7.0%	56.5%	3:45 PM	359	155	181	9.6%	53.9%	2	20	1,332	*****
273	C-101	100' S. of Woodridge Dr	01/20/16	24-HR	5,650	6,542	7,092	6,789	7,366	7,440	9:00 AM	537	219	226	7.2%	50.8%	3:45 PM	622	353	269	8.4%	56.8%	2	35	--	--
274	C-101	600' N. of Woodridge Dr	01/28/16	24-HR	2,652	2,789	3,095	3,687	3,990	3,353	9:00 AM	310	103	91	9.2%	53.1%	3:45 PM	304	147	116	9.1%	55.9%	2	35	--	--
275	C-100	150' S. of C-466E	02/17/16	24-HR	1,191	1,298	5,748	1,255	1,461	1,409	9:00 AM	124	34	37	8.8%	52.1%	3:45 PM	154	66	84	10.9%	56.0%	2	35	--	--
276	C-103	200' N of Woodridge Dr	01/19/16	24-HR	1,577	2,002	1,212	2,394	2,531	2,617	9:00 AM	393	93	70	15.0%	57.1%	3:45 PM	216	110	83	8.3%	57.0%	2	35	--	--
278	C-103	200' N of Wal Mart N.B.	01/19/16	24-HR	2,170	2,164	2,034	2,663	3,039	2,990	9:00 AM	357	98	69	11.9%	58.7%	3:45 PM	264	98	136	8.8%	58.1%	4	35	--	--
281	C-616	200' S. of C-48W	02/25/16	24-HR	3,163	3,102	3,314	3,425	3,516	3,770	9:00 AM	243	121	68	6.4%	64.0%	3:45 PM	324	164	160	8.6%	50.6%	2	45	--	--
283	S. Buena Vista	200' S. of Prof. Plaza	02/17/16	24-HR	16,912	17,683	14,734	19,125	20,440	18,654	9:00 AM	1,238	716	522	6.6%	57.8%	3:45 PM	1,580	744	750	8.5%	50.2%	4	35	--	--
286	S.Buena Vista	200' S of Laurel Manor Dr	01/20/16	24-HR	18,975	18,254	13,737	20,327	20,878	19,527	9:00 AM	1,325	770	555	6.8%	58.1%	3:45 PM	1,798	707	888	9.2%	55.7%	4	35	--	--
289	S.Buena Vista	200' N of Belvidere Blvd.	01/21/16	24-HR	19,099	18,799	15,212	20,492	16,058	20,211	9:00 AM	1,453	881	572	7.2%	60.6%	3:45 PM	1,823	718	968	9.0%	57.4%	4	35	--	--
292	S.Buena Vista	200' S of Belvidere Blvd.	01/20/16	24-HR	19,153	19,001	15,145	20,922	22,172	22,098	9:00 AM	1,377	747	630	6.2%	54.2%	3:45 PM	2,172	914	942	9.8%	50.8%	4	35	--	--
295	S.Buena Vista	200' S of Rainey Trl.	01/20/16	24-HR	21,221	20,960	16,734	23,372	24,462	23,172	9:00 AM	1,528	804	724	6.6%	52.6%	3:45 PM	2,203	852	994	9.5%	53.8%	4	35	--	--
299	S.Buena Vista	200' N of Stillwater Trl.	01/14/16	24-HR	16,395	17,589	13,593	18,971	19,887	18,990	8:45 AM	1,316	609	707	6.9%	53.7%	3:30 PM	1,627	885	742	8.6%	54.4%	4	35	--	--
302	S.Buena Vista	300' S of Stillwater Trl.	01/13/16	24-HR	15,002	19,398	17,331	23,008	24,616	23,179	9:00 AM	148	6	4	0.6%	60.0%	3:45 PM	1,213	806	407	5.2%	66.4%	4	35	--	--
305	S. Buena Vista	200' S. of N. Bailey Trail S. End	02/17/16	24-HR	9,695	9,258	9,016	13,857	12,427	14,155	8:45 AM	1,019	615	404	7.2%	60.4%	3:45 PM	1,182	498	595	8.4%	54.4%	4	35	--	--

**Sumter County Annual Traffic Counts
2016 Volumes Summary**

Sta ID	Street	Location Description	Start Date	Duration	ADT						A.M. Peak Hour						P.M. Peak Hour						# of Lanes	Posted Speed	Golf Cart	
					2011	2012	2013	2014	2015	2016	Time	Total	NB/EB	SB/WB	'K'	'D'	Time	Total	NB/EB	SB/WB	'K'	'D'			2015	2016
308	S.Buena Vista	1320' S of St. Charles Place	02/04/16	24-HR	6,460	7,290	7,517	11,989	11,130	12,392	9:00 AM	885	463	422	7.1%	52.3%	3:45 PM	1,006	443	498	8.1%	52.9%	4	35	--	--
311	S.Buena Vista	300' S of S. Bailey Trail	02/04/16	24-HR	5,672	7,437	8,183	13,503	14,983	13,579	9:00 AM	980	484	496	7.2%	50.6%	3:45 PM	1,104	530	534	8.1%	50.2%	4	35	--	--
314	S. Buena Vista	300' S. of Turtle Mound Path	02/04/16	24-HR	7,935	10,868	11,605	18,280	19,729	17,712	9:00 AM	1,437	659	778	8.1%	54.1%	3:45 PM	1,393	510	666	7.9%	56.6%	4	35	--	--
326	Bonita Blvd.	200' E. of Buena Vista Blvd.	02/11/16	24-HR	3,819	3,057	2,889	3,390	3,747	4,725	8:15 AM	350	101	249	7.4%	71.1%	3:15 PM	394	140	254	8.3%	64.5%	2	20	965	--
329	Bonita Blvd.	200' W. of Morse Blvd.	01/28/16	24-HR	3,617	3,210	3,014	3,664	3,152	3,829	9:00 AM	292	187	105	7.6%	64.0%	3:45 PM	328	123	166	8.6%	57.4%	2	20	451	--
330	C-727	300' North of SR 50	--	24-HR	177	148	191	n/a	174	*****	--	--	--	--	--	--	--	--	--	--	--	--	2	35	--	--
332	C-721	300' East of C-471	03/31/16	24-HR	686	604	657	734	659	716	7:30 AM	72	48	24	10.1%	66.7%	3:45 PM	46	21	25	6.4%	54.3%	2	35	--	--
334	C-747	300' North of C-730	03/03/16	24-HR	1,164	1,310	1,180	1,296	1,284	1,299	9:00 AM	175	47	21	13.5%	69.1%	3:30 PM	144	75	69	11.1%	52.1%	2	40	--	--
336	C-747	300' South of C-730	03/03/16	24-HR	683	690	648	716	731	693	9:00 AM	54	36	18	7.8%	66.7%	3:45 PM	61	22	39	8.8%	63.9%	2	40	--	--
340	C-229	300' North of SR 44	--	24-HR	2,138	3,010	2,131	2,050	2,441	*****	--	--	--	--	--	--	--	--	--	--	--	--	2	45	--	--
342	C-229	1000' North of C-462	--	24-HR	2,039	1,841	1,937	1,935	2,283	*****	--	--	--	--	--	--	--	--	--	--	--	--	2	45	--	--
344	C-237	300' South of C-466	--	24-HR	386	359	377	363	412	*****	--	--	--	--	--	--	--	--	--	--	--	--	2	40	--	--
120	CR 209	South of CR 466	--	24-HR	724	449	761	833	869	*****	--	--	--	--	--	--	--	--	--	--	--	--	2	45	--	--
1402	CR 209	North of CR 466	--	24-HR	565	454	401	437	575	*****	--	--	--	--	--	--	--	--	--	--	--	--	2	35	--	--
200	CR 213	South of CR 44A	--	24-HR	406	425	457	411	466	*****	--	--	--	--	--	--	--	--	--	--	--	--	2	30	--	--
300	US 301	South of Turnpike Ramps	--	24-HR	9,092	10,253	10,323	10,921	11,965	*****	--	--	--	--	--	--	--	--	--	--	--	--	2	55	--	--
3202	US 301	South of SR 44	--	24-HR	13,249	15,080	15,128	17,240	19,307	*****	--	--	--	--	--	--	--	--	--	--	--	--	4	45	--	--
3402	US 301	North of SR 44	--	24-HR	18,516	23,070	20,503	20,736	23,420	*****	--	--	--	--	--	--	--	--	--	--	--	--	5	40	--	--
360	US 301	Southwest of CR 466A	--	24-HR	16,850	21,622	18,577	19,103	21,347	*****	--	--	--	--	--	--	--	--	--	--	--	--	4	35	--	--
400	US 301	South of CR 462	--	24-HR	13,125	18,507	18,727	18,174	20,396	*****	--	--	--	--	--	--	--	--	--	--	--	--	4	40	--	--
420	US 301	South of CR 466	--	24-HR	16,301	21,993	19,185	24,424	27,614	*****	--	--	--	--	--	--	--	--	--	--	--	--	4	45	--	--
440	US 301	North of CR 466	--	24-HR	14,229	19,001	16,547	17,640	19,844	*****	--	--	--	--	--	--	--	--	--	--	--	--	4	45	--	--
500	CR 139	South of CR 466A	02/11/16	24-HR	4,540	5,760	6,492	8,522	12,628	10,420	8:15 AM	673	285	388	6.5%	57.7%	3:45 PM	898	474	392	8.6%	54.7%	4	35	--	--
800	CR 472	West of Lynnhaven Ln	03/31/16	24-HR	3,700	4,141	4,348	5,421	6,032	5,941	9:00 AM	527	215	158	8.9%	57.6%	3:45 PM	502	246	220	8.4%	52.8%	2	35	--	--
1100	CR 44A	East of CR 213	--	24-HR	1,048	1,100	1,007	1,052	1,140	*****	--	--	--	--	--	--	--	--	--	--	--	--	2	35	--	--
1120	CR 44A	West of CR 139 (Powell Rd)	02/11/16	24-HR	1,308	1,565	1,583	2,602	2,915	2,686	8:45 AM	179	106	73	6.7%	59.2%	3:30 PM	262	142	120	9.8%	54.2%	4	35	--	--
1200	SR 44	West of US 301	--	24-HR	13,090	17,078	16,442	18,206	19,302	*****	--	--	--	--	--	--	--	--	--	--	--	--	4	45	--	--
1220	SR 44	East of US 301	--	24-HR	12,567	16,486	15,484	19,160	23,383	*****	--	--	--	--	--	--	--	--	--	--	--	--	4	45	--	--
1240	SR 44	West of Sumter Lake C.L.	02/15/16	24-HR	14,101	16,828	13,234	17,205	19,855	21,406	7:30 AM	1,431	845	586	6.7%	59.0%	3:45 PM	1,689	795	894	7.9%	52.9%	4	55	--	--
348	Buena Vista Blvd	South of CR 466a	02/04/16	24-HR	0	4,726	9,279	14,258	12,414	12,836	9:00 AM	933	525	408	7.3%	56.3%	3:45 PM	1,072	467	490	8.4%	51.2%	4	35	--	--
350	Buena Vista Blvd	N of SR 44	02/11/16	24-HR	0	2,328	2,929	5,171	3,998	4,286	9:00 AM	291	116	162	6.8%	58.3%	3:45 PM	413	183	180	9.6%	50.4%	4	35	--	--
352	Buena Vista Blvd	S of El Camino Real / Glenview Rd	01/28/16	24-HR	0	17,646	14,697	20,049	17,090	20,847	9:00 AM	1,433	715	718	6.9%	50.1%	3:45 PM	1,792	916	806	8.6%	53.2%	4	35	--	--
354	C-44A	NW of CR 143	02/11/16	24-HR	0	830	1,122	1,262	1,113	859	9:00 AM	70	32	27	8.1%	54.2%	3:45 PM	66	48	7	7.7%	87.3%	2	25	--	--
356	C-462	E of CR 229	03/17/16	24-HR	0	1,535	1,239	1,125	1,443	1,398	9:00 AM	85	31	27	6.1%	53.4%	3:45 PM	126	48	78	9.0%	61.9%	2	45	--	--
358	C-466A	W of Canal St	--	24-HR	0	11,701	12,478	15,540	15,168	*****	--	--	--	--	--	--	--	--	--	--	--	--	4	45	--	--
452	C-469	N of SR 50	03/03/16	24-HR	0	1,376	1,429	1,894	1,791	2,150	7:30 AM	163	75	88	7.6%	54.0%	3:45 PM	143	70	73	6.7%	51.0%	2	55	--	--
362	C-476 E (Noble Ave)	E of Flanner Ave	02/25/16	24-HR	0	2,796	2,372	2,223	2,533	2,576	9:00 AM	190	60	76	7.4%	55.9%	3:45 PM	279	151	128	10.8%	54.1%	2	35	--	--
364	C-476 W	W of CR 616	02/25/16	24-HR	0	3,997	4,171	4,138	4,308	4,866	9:00 AM	407	130	88	8.4%	59.6%	3:45 PM	427	173	254	8.8%	59.5%	2	45	--	--
366	C-476 (Seminole Ave)	W of S. Roland St	03/17/16	24-HR	0	3,730	3,621	4,425	4,124	4,494	7:30 AM	347	185	162	7.7%	53.3%	3:45 PM	355	167	188	7.9%	53.0%	2	30	--	--
368	CR 48 (Florida St)	S of E. Virginia Ave	02/25/16	24-HR	0	3,730	3,346	3,515	3,604	3,704	7:30 AM	285	190	95	7.7%	66.7%	3:15 PM	323	143	180	8.7%	55.7%	2	30	--	--
370	C-48	E of N. Justice St	02/25/16	24-HR	0	6,443	5,574	6,498	6,243	7,403	9:00 AM	599	226	206	8.1%	52.3%	3:30 PM	581	273	308	7.8%	53.0%	2	35	--	--

**Sumter County Annual Traffic Counts
2016 Volumes Summary**

Sta ID	Street	Location Description	Start Date	Duration	ADT						A.M. Peak Hour						P.M. Peak Hour						# of Lanes	Posted Speed	Golf Cart	
					2011	2012	2013	2014	2015	2016	Time	Total	NB/EB	SB/WB	'K'	'D'	Time	Total	NB/EB	SB/WB	'K'	'D'			2015	2016
372	C-48	E of SE 26th Dr	02/25/16	24-HR	0	4,251	4,183	5,104	4,778	5,118	9:00 AM	371	135	155	7.2%	53.4%	3:45 PM	380	180	200	7.4%	52.6%	2	45	--	--
374	C-48	W of CR 625	02/25/16	24-HR	0	10,971	2,522	5,222	4,113	4,387	9:00 AM	300	104	123	6.8%	54.2%	3:45 PM	405	159	246	9.2%	60.7%	2	45	--	--
376	C-48	E of North Ave / South Ave	03/03/16	24-HR	0	1,843	4,541	4,861	5,056	5,372	7:30 AM	361	154	207	6.7%	57.3%	3:45 PM	410	221	189	7.6%	53.9%	2	35	--	--
378	C-48	W of Magnolia Ave	03/03/16	24-HR	0	4,534	4,226	4,899	4,861	5,069	7:30 AM	348	153	195	6.9%	56.0%	3:45 PM	363	183	180	7.2%	50.4%	2	35	--	--
454	CR 139 (Powell Rd)	N of SR 44	03/31/16	24-HR	0	5,364	6,574	7,759	9,603	10,280	9:00 AM	701	290	338	6.8%	53.8%	3:45 PM	803	422	366	7.8%	53.6%	4	35	--	--
382	CR 156	E of CR 181	--	24-HR	0	620	634	729	849	*****	--	--	--	--	--	--	--	--	--	--	--	2	25	--	--	
386	CR 625	S of CR 48	--	24-HR	0	371	447	392	369	*****	--	--	--	--	--	--	--	--	--	--	--	2	35	--	--	
388	CR 728	W of CR 469	--	24-HR	0	351	385	n/a	468	*****	--	--	--	--	--	--	--	--	--	--	--	2	35	--	--	
390	Seminole Ave E	W of N. Justice St	02/25/16	24-HR	0	941	886	847	816	914	7:30 AM	79	35	44	8.6%	55.7%	3:15 PM	67	36	31	7.3%	53.7%	2	35	--	--
392	SR 44	W of CR 243	--	24-HR	0	9,582	6,822	9,687	11,499	*****	--	--	--	--	--	--	--	--	--	--	--	4	60	--	--	
394	SR 44	E of CR 231	--	24-HR	0	9,297	7,872	8,888	11,017	*****	--	--	--	--	--	--	--	--	--	--	--	5	60	--	--	
396	SR 44	W of CR 229	--	24-HR	0	17,306	16,253	17,000	19,976	*****	--	--	--	--	--	--	--	--	--	--	--	5	45	--	--	
398	SR 44	E of Buena Vista Blvd	--	24-HR	0	14,081	STRUC	15,102	17,746	*****	--	--	--	--	--	--	--	--	--	--	--	4	45	--	--	
456	SR 44	W of CR 143	--	24-HR	0	14,160	STRUC	15,148	18,063	*****	--	--	--	--	--	--	--	--	--	--	--	4	55	--	--	
406	SR 471	N of CR 478 / NW 4th Ave	--	24-HR	0	8,091	7,534	8,761	10,506	*****	--	--	--	--	--	--	--	--	--	--	--	2	35	--	--	
404	SR 471	S of NE 2nd Ave	--	24-HR	0	8,942	7,911	10,212	10,385	*****	--	--	--	--	--	--	--	--	--	--	--	2	35	--	--	
402	SR 471	N of SE 1st Ave / CR 478	--	24-HR	0	8,006	7,415	8,340	7,854	*****	--	--	--	--	--	--	--	--	--	--	--	2	35	--	--	
408	SR 471	N of CR 520	--	24-HR	0	4,377	4,343	5,374	5,181	*****	--	--	--	--	--	--	--	--	--	--	--	2	55	--	--	
410	SR 48 (CR 48 W)	E of SW 20th Dr	--	24-HR	0	12,459	10,409	13,834	13,870	*****	--	--	--	--	--	--	--	--	--	--	--	2	40	--	--	
412	SR 48 (CR 48 W)	W of N. West St	--	24-HR	0	13,589	12,311	14,175	13,805	*****	--	--	--	--	--	--	--	--	--	--	--	2	40	--	--	
414	SR 48 (CR 48 W)	E of N. Wall St	--	24-HR	0	10,971	8,984	10,530	11,793	*****	--	--	--	--	--	--	--	--	--	--	--	2	40	--	--	
416	SR 48 (Main St N)	N of W. Dade Ave	--	24-HR	0	11,222	CST*	10,226	10,903	*****	--	--	--	--	--	--	--	--	--	--	--	4	40	--	--	
418	US 27/US 441/SR 500	SE of CR 109	--	24-HR	0	38,295	38,337	40,806	38,360	*****	--	--	--	--	--	--	--	--	--	--	--	6	45	--	--	
458	US 27/US 441/SR 500	SE of Buenos Aires Blvd	--	24-HR	0	38,590	38,632	37,124	34,776	*****	--	--	--	--	--	--	--	--	--	--	--	6	45	--	--	
422	US 301/SR 35 (Main St)	S of W. Noble Ave	--	24-HR	0	9,038	9,995	10,338	9,337	*****	--	--	--	--	--	--	--	--	--	--	--	4	45	--	--	
424	US 301/SR 35 (Noble Av)	W of N Florida St	--	24-HR	0	7,198	6,811	6,487	6,745	*****	--	--	--	--	--	--	--	--	--	--	--	2	30	--	--	
426	US 301/SR 35 (Noble Av)	E of N Florida St	--	24-HR	0	4,946	5,408	5,004	5,182	*****	--	--	--	--	--	--	--	--	--	--	--	2	30	--	--	
428	US 301/SR 35	S of CR 542	--	24-HR	0	5,027	4,901	4,857	5,618	*****	--	--	--	--	--	--	--	--	--	--	--	2	55	--	--	
430	US 301/SR 35	N of CR 520	--	24-HR	0	6,019	6,091	6,395	7,033	*****	--	--	--	--	--	--	--	--	--	--	--	2	50	--	--	
432	US 301/SR 35	S of CR 522 / N of CR 470	--	24-HR	0	12,208	9,685	14,394	14,049	*****	--	--	--	--	--	--	--	--	--	--	--	3	45	--	--	
434	US 301/SR 35	S of CR 470	--	24-HR	0	12,426	10,597	13,597	14,522	*****	--	--	--	--	--	--	--	--	--	--	--	2	45	--	--	
436	US 301/SR 35	S of Clark Ave	--	24-HR	0	7,796	6,989	8,609	7,667	*****	--	--	--	--	--	--	--	--	--	--	--	2	35	--	--	
438	US 301/SR 35 (Warm Springs Ave)	E of CR 523 / Stokes St	--	24-HR	0	8,138	8,357	8,788	8,447	*****	--	--	--	--	--	--	--	--	--	--	--	2	45	--	--	
460	US 301/SR 35 (Main St)	S of Villager RV Park / N of Turnpike	--	24-HR	0	17,221	15,005	16,367	19,268	*****	--	--	--	--	--	--	--	--	--	--	--	4	45	--	--	
442	US 301/SR 35	S of CR 130	--	24-HR	0	20,664	21,644	24,273	26,092	*****	--	--	--	--	--	--	--	--	--	--	--	4	45	--	--	
446	US 301/SR 35	S of CR 222	--	24-HR	0	19,721	21,073	24,076	26,175	*****	--	--	--	--	--	--	--	--	--	--	--	4	55	--	--	
448	US 301/SR 35	S of CR 472	--	24-HR	0	16,547	21,577	23,462	27,302	*****	--	--	--	--	--	--	--	--	--	--	--	4	55	--	--	
450	US 301/SR 35	S of SE 180th St / CR 12 / County Line Rd	--	24-HR	0	17,373	17,020	18,396	20,196	*****	--	--	--	--	--	--	--	--	--	--	--	4	45	--	--	
474	St. Charles PI (N)	NW of Buena Vista Blvd (NW of golf path)	02/17/16	24-HR	0	3,700	3,872	3,814	3,164	5,024	9:00 AM	361	213	148	7.2%	59.0%	3:45 PM	478	191	232	9.5%	54.8%	2	20	795	--
476	Tamarind Grove Run	W of St Charles PI	02/04/16	24-HR	0	3,124	2,093	2,856	2,450	3,256	9:00 AM	265	107	158	8.1%	59.6%	3:15 PM	298	180	118	9.2%	60.4%	2	20	866	--
478	Buttonwood Run	NW of St Charles PI	01/28/16	24-HR	0	3,659	3,544	5,241	3,975	4,925	9:00 AM	374	236	138	7.6%	63.1%	3:45 PM	417	134	209	8.5%	60.9%	2	20	1,639	--

**Sumter County Annual Traffic Counts
2016 Volumes Summary**

Sta ID	Street	Location Description	Start Date	Duration	ADT						A.M. Peak Hour						P.M. Peak Hour						# of Lanes	Posted Speed	Golf Cart	
					2011	2012	2013	2014	2015	2016	Time	Total	NB/EB	SB/WB	'K'	'D'	Time	Total	NB/EB	SB/WB	'K'	'D'			2015	2016
480	Pennecamp Drive	N of St Charles Pl	01/28/16	24-HR	0	3,415	4,382	3,923	3,332	4,026	9:00 AM	287	97	190	7.1%	66.2%	3:30 PM	354	202	152	8.8%	57.1%	2	20	1,039	--
472	St. Charles Pl	W of Bailey Trail	01/28/16	24-HR	0	6,973	7,909	8,922	6,495	7,485	9:00 AM	584	409	175	7.8%	70.0%	3:30 PM	611	266	345	8.2%	56.5%	2	20	2,654	--
464	CR 121	S of CR 128	02/04/16	24-HR	0	1,841	1,941	1,953	2,612	2,246	9:00 AM	228	58	74	10.2%	56.1%	3:15 PM	170	78	92	7.6%	54.1%	2	30	--	--
470	St. Charles Pl (S)	NW of Buena Vista Blvd (NW of golf path)	02/18/16	24-HR	0	7,212	4,198	7,940	6,447	10,441	9:00 AM	765	440	325	7.3%	57.5%	3:45 PM	926	513	413	8.9%	55.4%	2	20	2,390	--
462	CR 209	N of CR 222	--	24-HR	0	****	612	708	717	*****	--	--	--	--	--	--	--	--	--	--	--	--	2	35	--	--
466	CR 102	W of CR 103	01/19/16	24-HR	0	831	848	983	919	1,046	9:00 AM	170	28	13	16.3%	68.3%	3:45 PM	102	39	56	9.8%	58.9%	2	35	--	--
468	CR 104	W of CR 103	01/19/16	24-HR	0	1,384	1,480	1,755	2,056	2,272	9:00 AM	342	55	23	15.1%	70.5%	3:45 PM	214	70	130	9.4%	65.0%	2	35	--	--
482	Odell Circle	NE of Morse Blvd N (N)	02/17/16	24-HR	0	5,310	10,461	6,791	5,334	9,697	9:00 AM	715	316	399	7.4%	55.8%	3:45 PM	830	458	372	8.6%	55.2%	2	30	2,431	--
483	Hillsborough Tr	East of Buena Vista Blvd	02/11/16	24-HR	0	0	1,955	7,548	9,111	9,194	9:00 AM	617	397	220	6.7%	64.3%	3:45 PM	767	291	449	8.3%	60.7%	2	30	--	--
484	CR 209	South of CR 462	--	24-HR	676	0	7,530	491	521	*****	--	--	--	--	--	--	--	--	--	--	--	--	2	35	--	--
485	Morse Blvd	South of Pinellas Place	02/11/16	24-HR	0	0	244	1,852	7,667	9,889	9:00 AM	699	372	327	7.1%	53.2%	3:15 PM	872	449	423	8.8%	51.5%	4	45	--	--
486	Anna Maria Ave	North of Hillsborough Tr	02/11/16	24-HR	0	0	745	1,649	2,517	3,606	9:00 AM	249	139	110	6.9%	55.8%	3:15 PM	316	148	168	8.8%	53.2%	2	30	--	--
487	Charlotte Crt	North of Hillsborough Tr	02/11/16	24-HR	0	0	592	975	2,035	2,590	8:45 AM	162	67	95	6.3%	58.6%	3:30 PM	252	141	111	9.7%	56.0%	2	30	--	--
488	Pinellas Pl	East of Buena Vista Blvd	02/04/16	24-HR	0	0	7,620	8,219	7,900	7,675	9:00 AM	590	239	351	7.7%	59.5%	3:30 PM	616	346	270	8.0%	56.2%	2	35	--	--
489	Talley Ridge Dr	West of Buena Vista Blvd (Intersection South)	01/19/16	24-HR	0	0	2,653	3,741	3,992	3,736	8:45 AM	250	164	86	6.7%	65.6%	3:45 PM	350	164	186	9.4%	53.1%	4	30	--	--
490	Morse Blvd	North of Pinellas Place	03/17/16	24-HR	0	0	7,208	11,024	14,669	8,521	9:00 AM	704	340	364	8.3%	51.7%	3:15 PM	748	426	322	8.8%	57.0%	2	30	--	--
491	Oak Forest Dr	South of Talley Ridge Dr	--	24-HR	0	0	2,198	2,300	2,480	*****	--	--	--	--	--	--	--	--	--	--	--	--	2	20	--	--
492	Parr Dr	East of Bevedere Dr	01/20/16	24-HR	0	0	3,702	4,899	4,600	4,410	9:00 AM	312	157	155	7.1%	50.3%	3:45 PM	477	182	202	10.8%	52.6%	2	35	--	--
493	Triggerfish Run	West of Pennecamp Dr	02/16/16	24-HR	0	0	1,014	1,539	1,056	1,000	9:00 AM	70	42	28	7.0%	60.0%	3:15 PM	103	52	51	10.3%	50.5%	2	20	--	--
800	CR 472	West of Lynnhaven Ln	--	24-HR	3,700	0	4,348	5,421	6,032	*****	--	--	--	--	--	--	--	--	--	--	--	--	2	35	--	--
1120	CR 44A	West of CR 139 (Powell Rd)	--	24-HR	1,308	1,565	1,583	2,602	2,915	*****	--	--	--	--	--	--	--	--	--	--	--	--	4	35	--	--
1200	SR 44	West of US 301	--	24-HR	13,090	17,078	16,442	18,206	19,302	*****	--	--	--	--	--	--	--	--	--	--	--	--	4	45	--	--
1220	SR 44	East of US 301	--	24-HR	12,567	16,486	15,484	19,160	23,383	*****	--	--	--	--	--	--	--	--	--	--	--	--	4	45	--	--
1240	SR 44	West of Sumter Lake C.L.	--	24-HR	14,101	16,828	13,234	17,205	19,855	*****	--	--	--	--	--	--	--	--	--	--	--	--	4	55	--	--
1402	CR 209	North of CR 466	--	24-HR	565	454	401	437	575	*****	--	--	--	--	--	--	--	--	--	--	--	--	2	35	--	--
3202	US 301	South of SR 44	--	24-HR	13,249	15,080	15,128	17,240	19,307	*****	--	--	--	--	--	--	--	--	--	--	--	--	4	45	--	--
3402	US 301	North of SR 44	--	24-HR	18,516	23,070	20,503	20,736	23,420	*****	--	--	--	--	--	--	--	--	--	--	--	--	5	40	--	--
93.1	C-478E	1 Mile West of SR 471	--	24-HR	0	1,406	3,352	3,745	3,239	*****	--	--	--	--	--	--	--	--	--	--	--	--	2	55	--	--
95.1	C-478A	500' West of SR 471	--	24-HR	0	593	621	870	812	*****	--	--	--	--	--	--	--	--	--	--	--	--	2	55	--	--
332.1	C-721	300' East of C-471	--	24-HR	0	595	766	747	920	*****	--	--	--	--	--	--	--	--	--	--	--	--	2	35	--	--

CST* = NOT COUNTED DUE TO CONSTRUCTION
***** = NOT INCLUDED IN 2016 COUNT PROGRAM