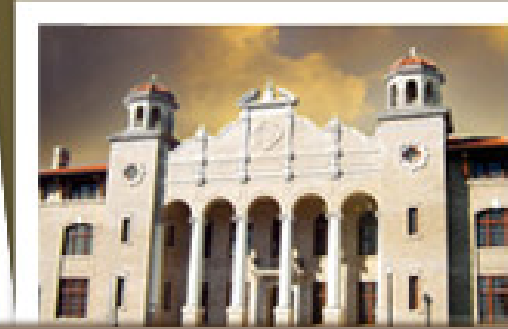
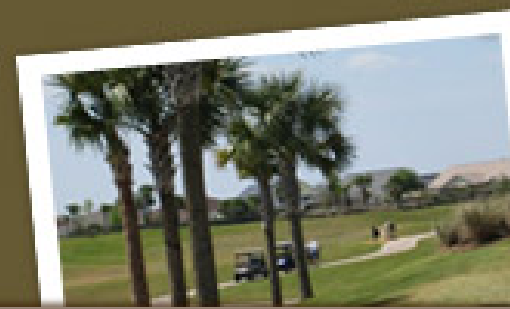
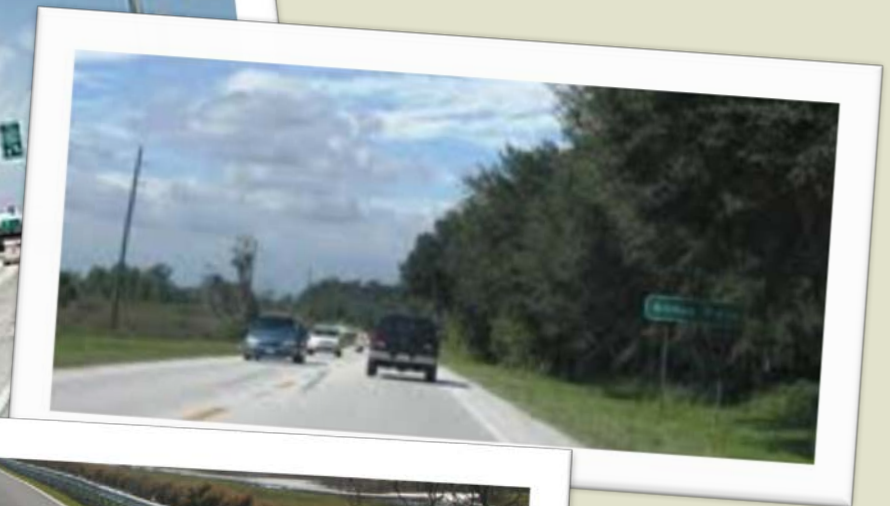
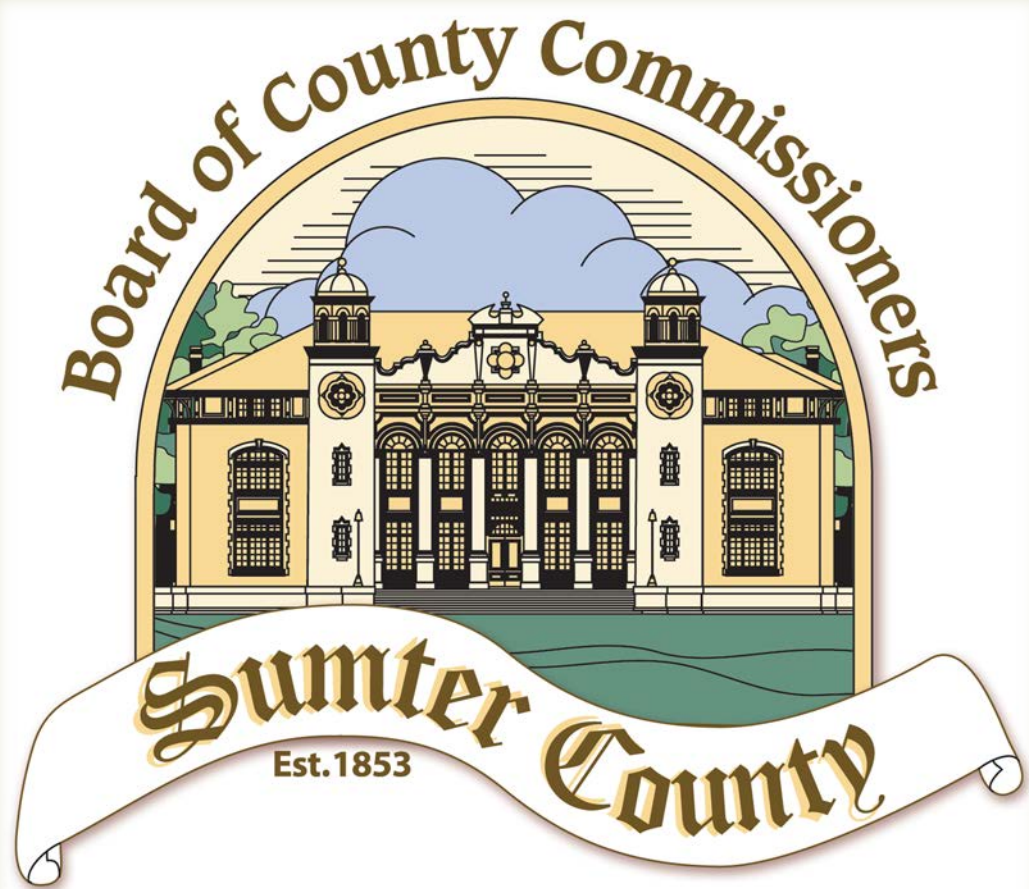


FLORIDA
Sumter County

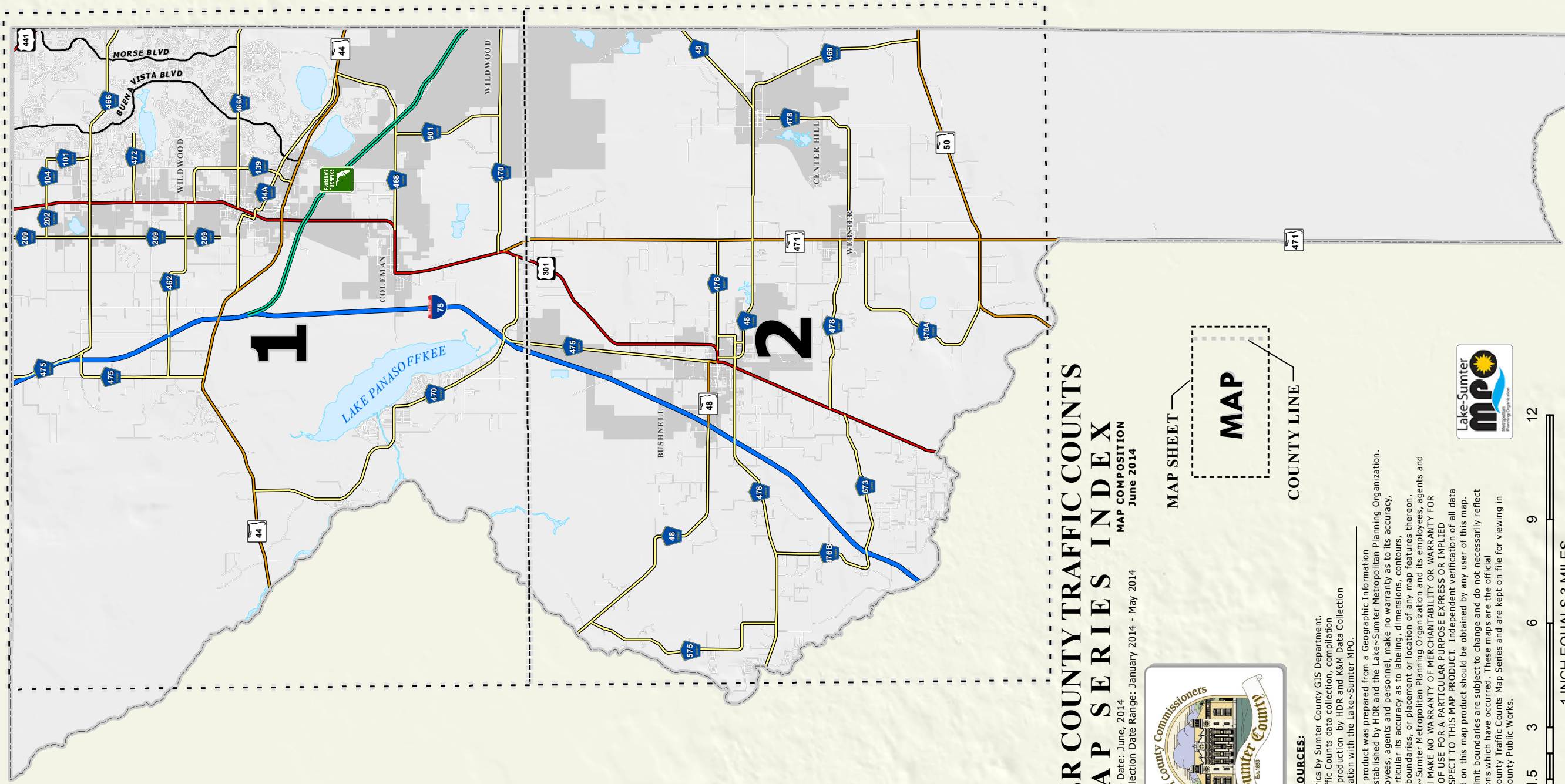
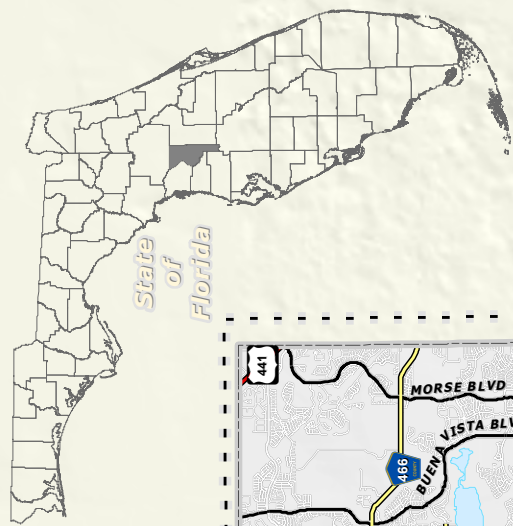


2014 TRAFFIC COUNTS



2014 SUMMITER COUNTY ANNUAL TRAFFIC COUNTS

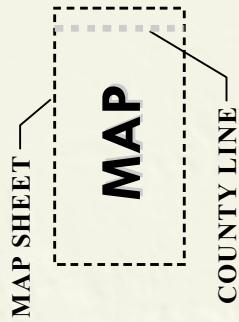
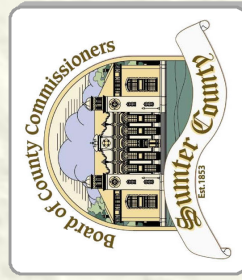
MPO TRAFFIC COUNTS PROGRAM



SUMTER COUNTY TRAFFIC COUNTS MAP SERIES INDEX

Effective Date: June, 2014
 Data Collection Date Range: January 2014 - May 2014

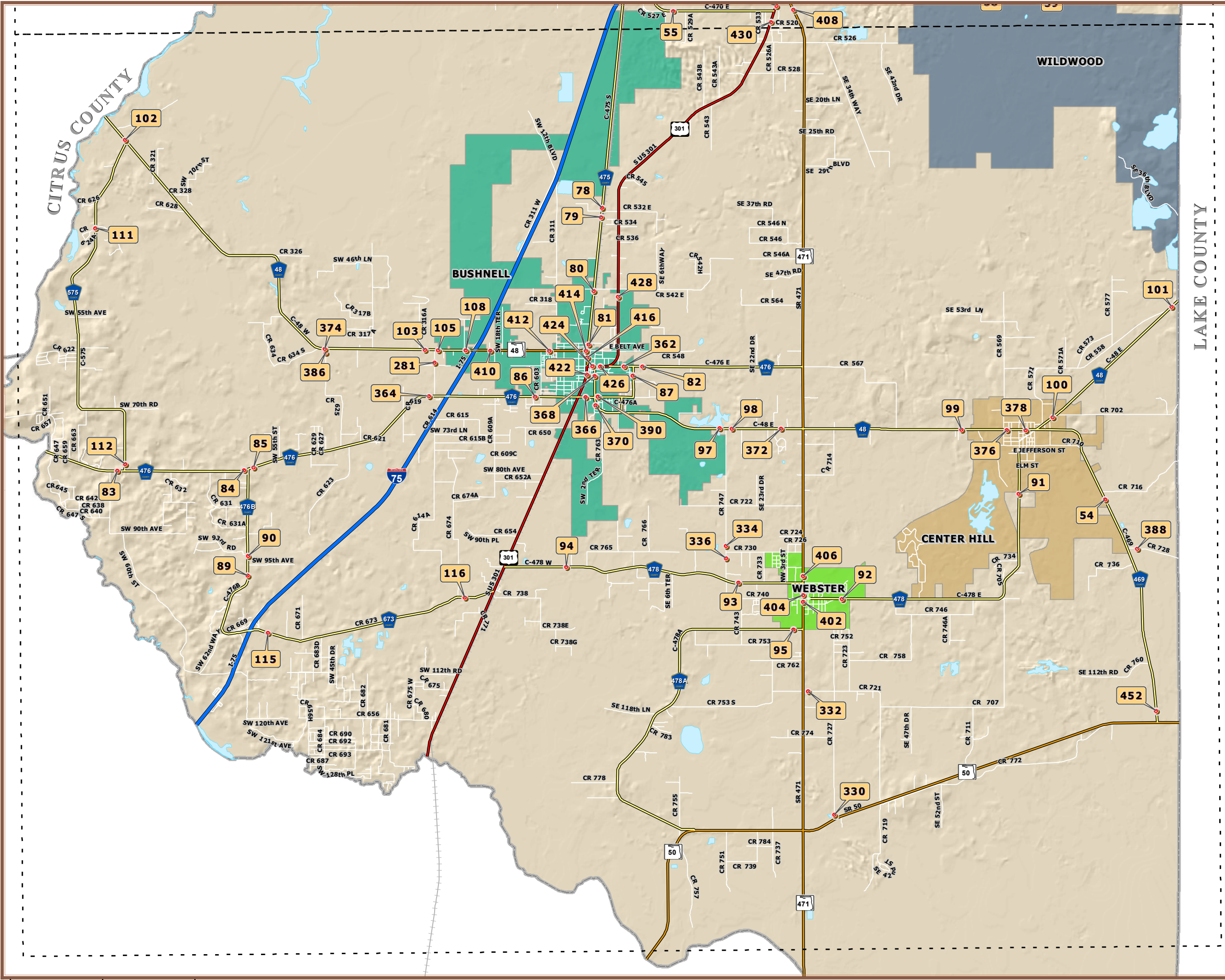
MAP COMPOSITION June 2014



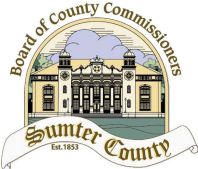
DATA SOURCES:

Planimetrics by Sumter County GIS Department.
 2014 Traffic Counts data collection, compilation and map production by HDR and K&M Data Collection in cooperation with the Lake-Sumter MPO.
 This map product was prepared from a Geographic Information System established by HDR and the Lake-Sumter Metropolitan Planning Organization. Its employees, agents and personnel, make no warranty as to its accuracy, and in particular its accuracy as to labeling, dimensions, contours, property boundaries, or placement or location of any map features thereon. The Lake-Sumter Metropolitan Planning Organization and its employees, agents and personnel MAKE NO WARRANTY OF MERCHANTABILITY OR IMPLIED FITNESS OF USE FOR A PARTICULAR PURPOSE EXPRESS OR IMPLIED WITH RESPECT TO THIS MAP PRODUCT. Independent verification of all data contained on this map product should be obtained by any user of this map. ** City Limit boundaries are subject to change and do not necessarily reflect annexations which have occurred. These maps are the official Sumter County Traffic Counts Map Series and are kept on file for viewing in Sumter County Public Works.





2014 SUMTER COUNTY ANNUAL TRAFFIC COUNTS MAP SERIES



- LEGEND**
- Station ID
 - Traffic Count Station Location
 - County Road
 - State Road
 - US Highway
 - Interstate
 - Turnpike
 - Active Railroad
 - Water Body
 - County Boundary

- Incorporated Area**
- Bushnell
 - Center Hill
 - Coleman
 - Webster
 - Wildwood

** City Limit boundaries are subject to change and do not necessarily reflect annexations which have occurred. These maps are the official Sumter County Traffic Counts Map Series and are kept on file for viewing in Sumter County Public Works.

DATA SOURCES:
 Planimetrics by Sumter County GIS Department.
 2014 Traffic Counts data collection, compilation and map production by HDR and K&M Data Collection in cooperation with the Lake-Sumter MPO.

This map product was prepared from a Geographic Information System established by HDR and the Lake-Sumter Metropolitan Planning Organization. Its employees, agents and personnel, make no warranty as to its accuracy, and in particular its accuracy as to labeling, dimensions, contours, property boundaries, or placement or location of any map features thereon. The Lake-Sumter Metropolitan Planning Organization and its employees, agents and personnel MAKE NO WARRANTY OF MERCHANTABILITY OR WARRANTY FOR FITNESS OF USE FOR A PARTICULAR PURPOSE EXPRESS OR IMPLIED WITH RESPECT TO THIS MAP PRODUCT. Independent verification of all data contained on this map product should be obtained by any user of this map.



MAP SERIES INDEX

MAP SHEET 2

SUMTER COUNTY
ANNUAL TRAFFIC COUNT PROGRAM
2014 TRAFFIC REPORT

Every year, the Lake-Sumter Metropolitan Planning Organization (MPO), in cooperation and partnership with Sumter County Public Works Department, implements a traffic count program. The MPO collects and analyzes the traffic data, and subsequently uses the information to identify traffic flow trends over time and to support the decision-making process related to road maintenance and project development. The traffic data is used by the MPO, County, municipalities within the County, and other transportation agencies in the review of road improvement projects, traffic impact studies for proposed developments, and level-of-service ratings for maintenance operations. In the private sector - realtors, bankers, developers, economic development agencies, as well as citizens also use traffic count data for a variety of purposes. This information is provided via this web site as a service of Sumter County in partnership with the MPO.

The "SUMTER COUNTY ANNUAL TRAFFIC REPORT – 2014 TRAFFIC REPORT" provides the latest traffic count information. The counts were obtained using pneumatic traffic data recorders and the locations were marked using GPS units. Data collection was conducted during the months of January, February and March 2014 during the historical peak season of activity in Sumter County. Data was collected for a 24 hour period on a Tuesday, Wednesday or Thursday for each count station. Additional counts were collected at a few select stations on a Monday to capture the special event traffic generated by the Webster Flea Market.

The report contains a series of maps and a table. The following information is intended to explain the headings in the table as well as key definitions and information associated with the Annual Traffic Count Program:

1	2	3	4	5	6					7					8	9	10	11		12	13
Sta ID	Street	Location Description	Start Date	Dura- tion	A.M. Peak Hour					P.M. Peak Hour					# of Lanes	Posted Speed	Golf Cart		Map Page	TRS	
					2010	2011	2012	2013	2014	Time	Total	NB/EB	SB/WB	'K'			'D'	Time			Total

1. Sta ID – This is the unique station number assigned to each count station for consistent tracking.
2. Street – Name of the street/road where the count was taken.
3. Location Description – Location that the count was obtained described by distance from the nearest major cross street. The location is also marked by a GPS point location.
4. Start Date – The data the volume count was started.
5. The length of time data was collected, usually 24 hours.
6. ADT – The "Average Daily Trips" is a measure of the traffic volume observed during the 2014 count period. The historical (2010 - 2013) ADT is also provided for reference. An ADT of 0 or NC signifies that a count was not obtained in that year.
7. A.M. Peak Hour – The traffic information observed for the highest one hour period during the morning.
 - Time – The start time of the A.M. peak hour (e.g. 9:15 means the peak hour is 9:15 to 10:15).
 - Total – Total traffic observed during the A.M. peak hour.
 - NB/EB – The traffic volume observed in the NB or EB (depending on road orientation) during the A.M. peak hour.
 - SB/WB – The traffic volume observed in the SB or WB (depending on road orientation) during the A.M. peak hour.
 - K – This factor reflects the ratio of total A.M. peak hour traffic to the total daily traffic (e.g. if peak hour volume is 100 vehicles and ADT is 1,000, then $K = \text{peak}/\text{daily} = 100/1,000 = 0.1$). It is reported in the table as a percentage.
 - D – This factor reflects the ratio of peak direction peak hour traffic to the total A.M. peak hour traffic (e.g. if volume in EB direction 550 vehicles and WB direction is 450 vehicles, then total A.M. peak hour volume is 1,000 vehicles and $D = \text{peak direction}/\text{total peak} = 550/1,000 = 0.55$). It is reported in the table as a percentage.
8. P.M. Peak Hour – The traffic information for the highest one hour period during the evening peak.
 - Time – The start time of the P.M. peak hour (e.g. 4:30 means the peak hour is 4:30 to 5:30).
 - Total – Total traffic observed during the P.M. peak hour.
 - NB/EB – The traffic volume observed in the NB or EB (depending on road orientation) during the P.M. peak hour.
 - SB/WB – The traffic volume observed in the SB or WB (depending on road orientation) during the P.M. peak hour.
 - K – This factor reflects the ratio of total P.M. peak hour traffic to the total daily traffic (e.g. if peak hour volume is 100 vehicles and ADT is 1,000, then $K = \text{peak}/\text{daily} = 100/1,000 = 0.1$). It is reported in the table as a percentage.
 - D – This factor reflects the ratio of peak direction peak hour traffic to the total P.M. peak hour traffic. (e.g. if volume in EB direction 550 vehicles and WB direction is 450 vehicles, then total P.M. peak hour volume is 1,000 vehicles and $D = \text{peak direction}/\text{total peak} = 550/1,000 = 0.55$). It is reported in the table as a percentage.
9. # of Lanes – The number of travel lanes on the roadway at the time that the count was taken.
10. Posted Speed – The posted speed limit on the road at the location where the count was taken.
11. Golf Cart – Bi-directional golf cart traffic observed on dedicated golf cart paths or golf cart lanes at the location where the count was taken. The count observed in 2013 is also provided.
12. The map page number the station is located on.
13. The Township, Range and Section the count is located in.

**Sumter County Annual Traffic Counts
2014 Volumes Summary**

Sta ID	Street	Location Description	Start Date	Duration						A.M. Peak Hour					P.M. Peak Hour					# of Lanes	Posted Speed	Golf Cart		Map Page	TRS		
					2010	2011	2012	2013	2014	Time	Total	NB/EB	SB/WB	'K'	'D'	Time	Total	NB/EB	SB/WB			'K'	'D'			2013	2014
8	C-44A	150' East of CR 221(West of US 301)	01/30/14	24-HR	980	1,046	995	3,110	816	7:45 AM	65	32	33	8.0%	50.8%	5:00 PM	85	36	49	10.4%	57.6%	2	35	--	--	1	19S22E01
9	C-44A	500' West of Buena Vista Boulevard	02/05/14	24-HR	1,851	1,313	1,428	2,324	4,180	8:15 AM	291	120	171	7.0%	58.8%	4:00 PM	371	157	214	8.9%	57.7%	4	35	--	--	1	19S23E09
11	C-462W	400' East of C-475N	01/14/14	24-HR	418	515	692	488	621	6:00 AM	70	62	8	11.3%	88.6%	3:15 PM	77	48	29	12.4%	62.3%	2	45	--	--	1	18S22E28
12	C-462E	275' East of CR 131	02/05/14	24-HR	5,233	6,005	6,718	7,701	10,839	7:30 AM	892	584	308	8.2%	65.5%	3:45 PM	1,036	354	682	9.6%	65.8%	2	35	--	--	1-A	18S23E32
13	C-462E	20' East of CR 221	01/30/14	24-HR	2,150	2,261	2,196	2,138	2,291	6:00 AM	203	44	159	8.9%	78.3%	3:45 PM	226	140	86	9.9%	61.9%	2	45	--	--	1-A	18S22E25
14	C-462E	500' West of US 301	01/14/14	24-HR	2,563	2,326	2,456	2,458	2,450	7:00 AM	219	167	52	8.9%	76.3%	5:00 PM	264	88	176	10.8%	66.7%	2	55	--	--	1-A	18S23E30
15	C-462E	200' East of US 301	02/05/14	24-HR	5,104	5,104	5,965	6,562	8,545	6:30 AM	664	450	214	7.8%	67.8%	3:45 PM	766	252	514	9.0%	67.1%	2	45	--	--	1-A	18S23E32
16	C-462E	200' N. of NE 81 st. Blvd.	02/05/14	24-HR	4,544	6,655	7,379	8,043	10,713	7:15 AM	911	277	634	8.5%	69.6%	3:45 PM	996	634	362	9.3%	63.7%	2	45	--	--	1-A	18S23E33
17	C-462E	500' North of C-466A	02/05/14	24-HR	4,143	5,514	7,706	8,553	11,194	7:15 AM	1,003	382	621	9.0%	61.9%	3:30 PM	1,029	642	387	9.2%	62.4%	2	45	--	--	1	19S23E04
18	C-466W	300' South of C-475N	01/14/14	24-HR	2,158	4,457	4,488	4,680	4,670	7:00 AM	412	112	300	8.8%	72.8%	4:30 PM	456	326	130	9.8%	71.5%	2	45	--	--	1	18S22E16
19	C-466E	250' East of CR 229	01/14/14	24-HR	2,529	4,854	4,922	5,257	5,232	7:00 AM	448	310	138	8.6%	69.2%	5:00 PM	501	173	328	9.6%	65.5%	2	55	--	--	1	18S22E14
20	C-466E	450' West of US 301	01/14/14	24-HR	2,968	6,374	6,253	6,471	7,325	7:15 AM	723	335	388	9.9%	53.7%	5:00 PM	692	442	250	9.4%	63.9%	2	35	--	--	1-A	18S23E18
22	C-466E	300' West of R/R	01/15/14	24-HR	9,027	20,725	22,379	19,345	22,576	7:00 AM	1,828	1,140	688	8.1%	62.4%	4:15 PM	2,006	884	1,122	8.9%	55.9%	5	45	--	--	1-A	18S23E17
25	C-466E	300' West of CR 103	01/15/14	24-HR	7,950	18,330	19,385	17,855	20,358	7:00 AM	1,738	1,014	724	8.5%	58.3%	4:00 PM	1,810	814	996	8.9%	55.0%	5	45	--	--	1-A	18S23E17
28	C-466E	200' West of CR 101	01/15/14	24-HR	10,244	23,112	24,236	24,398	24,914	7:00 AM	1,963	1,118	845	7.9%	57.0%	3:00 PM	2,193	1,089	1,104	8.8%	50.3%	5	45	--	--	1-A	18S23E16
31	C-466E	400' W. of Buena Vista Blvd.	02/04/14	24-HR	12,783	28,100	29,813	18,014	30,289	7:00 AM	2,129	1,064	1,065	7.0%	50.0%	3:00 PM	2,578	1,330	1,248	8.5%	51.6%	4	45	--	--	1-A	18S23E16
34	C-466E	500' E. of Buena Vista Blvd.	01/15/14	24-HR	10,773	22,727	23,914	20,988	23,900	7:00 AM	1,644	795	849	6.9%	51.6%	3:00 PM	2,089	1,024	1,065	8.7%	51.0%	4	45	--	--	1-A	18S23E15
37	C-466E	500' East of Morse Blvd.	01/21/14	24-HR	10,433	24,085	25,790	29,401	25,854	8:45 AM	1,678	699	979	6.5%	58.3%	3:00 PM	2,242	1,173	1,069	8.7%	52.3%	4	45	--	--	1-A	18S23E13
40	C-466A (Cleveland)	150' East of US 301	u/c	u/c	3,330	7,870	6,379	7,997	u/c	u/c	u/c	u/c	u/c	u/c	u/c	u/c	u/c	u/c	u/c	u/c	u/c	u/c	u/c	--	--	1	19S23E06
41	C-466A	500' East of CR 139	02/11/14	24-HR	4,277	9,695	7,006	13,132	15,222	8:30 AM	1,180	602	578	7.8%	51.0%	3:15 PM	1,305	607	698	8.6%	53.5%	5	45	--	--	1	19S23E04
43	C-466A	500' W. of Buena Vista Blvd.	02/11/14	24-HR	4,802	10,244	13,638	13,429	15,724	8:30 AM	1,185	556	629	7.5%	53.1%	3:30 PM	1,306	548	758	8.3%	58.0%	4	45	--	--	1	19S23E03
46	C-466A	300' W. of Morse Blvd.	02/18/14	24-HR	4,475	11,433	13,107	12,288	15,099	9:00 AM	1,080	530	550	7.2%	50.9%	3:00 PM	1,240	629	611	8.2%	50.7%	4	45	--	--	1	19S23E01
49	C-466A	50' W. of Lake County Line	02/04/14	24-HR	5,445	12,307	13,318	14,490	16,441	8:30 AM	1,105	546	559	6.7%	50.6%	3:30 PM	1,476	695	781	9.0%	52.9%	2	45	--	--	1	19S23E01
50	C-468	1400' South of SR 44E	01/14/14	24-HR	3,623	3,755	3,841	3,392	3,670	7:15 AM	244	138	106	6.6%	56.6%	3:45 PM	329	138	191	9.0%	58.1%	2	45	--	--	1	19S23E23
51	C-468	500' East of CR 501	01/21/14	24-HR	2,728	2,789	2,638	2,682	2,956	7:00 AM	252	116	136	8.5%	54.0%	3:15 PM	241	126	115	8.2%	52.3%	2	55	--	--	1	19S23E27
52	C-468	500' West of CR 501	01/21/14	24-HR	2,220	2,369	2,117	2,373	2,329	7:15 AM	217	80	137	9.3%	63.1%	3:15 PM	233	165	68	10.0%	70.8%	2	55	--	--	1	19S23E33
53	C-468	400' East of US 301	01/21/14	24-HR	2,833	3,039	3,063	2,980	2,987	7:15 AM	244	105	139	8.2%	57.0%	3:15 PM	299	125	174	10.0%	58.2%	2	45	--	--	1	19S23E30
54	C-469	2640' South of CR 716	01/28/14	24-HR	2,068	1,981	1,747	1,749	1,917	7:00 AM	147	72	75	7.7%	51.0%	5:00 PM	168	82	86	8.8%	51.2%	2	55	--	--	2	21S23E26
55	C-470E	300' East of CR 529	01/14/14	24-HR	7,326	7,117	6,990	7,229	7,763	7:15 AM	612	389	223	7.9%	63.6%	3:00 PM	671	191	480	8.6%	71.5%	2	55	--	--	1	20S22E15
56	C-470E	500' West of Dixie Lime	02/13/14	24-HR	6,017	6,552	5,870	6,545	6,044	7:15 AM	503	307	196	8.3%	61.0%	3:30 PM	544	194	350	9.0%	64.3%	2	55	--	--	1	20S23E07
58	C-470E	300' West of CR 500	01/14/14	24-HR	6,208	6,422	6,157	5,451	6,404	7:15 AM	542	280	262	8.5%	51.7%	3:30 PM	512	243	269	8.0%	52.5%	2	55	--	--	1	20S23E16
59	C-470E	300' East of CR 501	02/18/14	24-HR	5,554	5,642	5,742	5,068	6,368	6:45 AM	506	215	291	7.9%	57.5%	3:30 PM	547	313	234	8.6%	57.2%	2	55	--	--	1	20S23E15
60	C-470N	200' North/West of CR 491	01/14/14	24-HR	7,876	8,092	7,808	6,411	7,337	7:15 AM	605	206	399	8.2%	66.0%	3:45 PM	646	403	243	8.8%	62.4%	2	35	--	--	1	20S22E16
62	C-470N	300' North CR 479	01/14/14	24-HR	6,883	6,903	6,426	7,584	6,049	7:15 AM	455	147	308	7.5%	67.7%	3:30 PM	518	328	190	8.6%	63.3%	2	45	--	--	1	20S22E05
64	C-470N	1320' South of CR 400	02/25/14	24-HR	3,135	3,547	2,665	3,099	3,069	7:00 AM	201	72	129	6.5%	64.2%	4:00 PM	237	133	104	7.7%	56.1%	2	45	--	--	1	19S22E30
65	C-470N	300' South of SR 44W	01/14/14	24-HR	2,279	2,458	2,418	2,242	2,340	7:30 AM	165	103	62	7.1%	62.4%	4:45 PM	238	108	130	10.2%	54.6%	2	55	--	--	1	19S21E02
66	C-472	325' West of RR Tracks	02/18/14	24-HR	2,624	3,755	3,139	3,521	4,447	7:30 AM	389	248	141	8.7%	63.8%	3:15 PM	390	224	166	8.8%	57.4%	2	35	--	--	1-A	18S23E20
67	C-472	500' West of CR 115	02/18/14	24-HR	4,261	4,619	4,587	4,359	5,984	9:00 AM	460	259	201	7.7%	56.3%	3:15 PM	491	268	223	8.2%	54.6%	2	35	--	--	1-A	18S23E21
75	C-475N	700' South of C-462W	01/14/14	24-HR	2,280	2,771	2,931	2,758	3,046	6:45 AM	251	166	85	8.2%	66.1%	4:30 PM	324	124	200	10.6%	61.7%	2	55	--	--	1	18S22E29
76	C-475N	1500' West of C-466W	01/14/14	24-HR	2,577	2,801	2,730	2,910	2,855	6:45 AM	226	64	162	7.9%	71.7%	4:45 PM	269	170	99	9.4%	63.2%	2	50	--	--	1	18S22E09
77	C-475N	1320' South of Marion Co	01/14/14	24-HR	4,135	4,255	6,962	3,916	4,223	7:00 AM	366	146	220	8.7%	60.1%	4:30 PM	399	262	137	9.4%	65.7%	2	55	--	--	1	18S22E04
78	C-475S	200' North of CR 532W	01/29/14	24-HR	3,915	3,611	3,846	3,795	3,399	7:45 AM	234	89	145	6.9%	62.0%	3:30 PM	323	184	139	9.5%	57.0%	2	55	--	--	2	20S22E33
79	C-475S	2500' South of CR 532W	02/18/14	24-HR	4,579	4,199	4,210	4,447	5,192	8:30 AM	383	162	221	7.4%	57.7%	3:30 PM	451	218	233	8.7%	51.7%	2	55	--	--	2	20S22E33
80	C-475S	100' South of CR 542	01/29/14	24-HR	5,142	5,030	5,135	5,818	4,335	8:30 AM	326	152	174	7.5%	53.4%	3:15 PM	428	220	208	9.9%	51.4%	4	45	--	--	2	21S22E09

**Sumter County Annual Traffic Counts
2014 Volumes Summary**

Sta ID	Street	Location Description	Start Date	Duration						A.M. Peak Hour					P.M. Peak Hour					# of Lanes	Posted Speed	Golf Cart		Map Page	TRS		
					2010	2011	2012	2013	2014	Time	Total	NB/EB	SB/WB	'K'	'D'	Time	Total	NB/EB	SB/WB			'K'	'D'			2013	2014
81	C-475S	500' North of SR 48W	02/12/14	24-HR	9,527	9,062	9,310	8,596	8,600	8:00 AM	775	486	289	9.0%	62.7%	3:30 PM	869	376	493	10.1%	56.7%	5	35	--	--	2	21S22E09
82	C-476E	500' East of C-476A	01/28/14	24-HR	1,841	1,734	1,906	1,934	1,760	7:45 AM	152	38	114	8.6%	75.0%	3:45 PM	159	93	66	9.0%	58.5%	2	45	--	--	2	21S22E15
83	C-476W	500' West of C-575	01/28/14	24-HR	3,033	3,034	3,028	3,049	2,889	7:15 AM	211	155	56	7.3%	73.5%	3:30 PM	254	89	165	8.8%	65.0%	2	55	--	--	2	21S21E19
84	C-476W	100' West of C-476B	01/28/14	24-HR	3,723	3,381	3,848	3,631	3,653	7:15 AM	267	196	71	7.3%	73.4%	3:30 PM	313	100	213	8.6%	68.1%	2	45	--	--	2	21S21E21
85	C-476W	100' East of C-476B	01/28/14	24-HR	3,677	3,312	3,683	3,517	3,598	7:00 AM	261	181	80	7.3%	69.3%	3:45 PM	324	174	150	9.0%	53.7%	2	45	--	--	2	21S21E22
86	C-476W	500' West of CR 603	01/28/14	24-HR	4,386	4,272	4,219	4,247	3,905	7:00 AM	359	247	112	9.2%	68.8%	3:30 PM	342	137	205	8.8%	59.9%	2	45	--	--	2	21S22E17
87	C-476A	2000' South of C-476E	01/28/14	24-HR	517	504	542	493	490	7:15 AM	39	23	16	8.0%	59.0%	5:30 PM	57	28	29	11.6%	50.9%	2	35	--	--	2	21S22E15
89	C-476B	1000' South of S.C.I.	01/28/14	24-HR	1,661	1,576	1,580	1,727	1,538	6:30 AM	148	65	83	9.6%	56.1%	4:15 PM	143	83	60	9.3%	58.0%	2	45	--	--	2	21S21E33
90	C-476B	1500' North of S.C.I.	u/c	24-HR	1,926	1,721	1,679	1,699	n/a	n/a	n/a	n/a	n/a	n/a	n/a	n/a	n/a	n/a	n/a	n/a	n/a	n/a	n/a	--	--	2	21S21E33
91	C-478E	1 Mile South of C-48E	01/28/14	24-HR	918	869	1,098	887	1,085	6:45 AM	82	59	23	7.6%	72.0%	5:45 PM	87	32	55	8.0%	63.2%	2	55	--	--	2	21S23E27
92	C-478E	200' East of Ball Park	01/28/14	24-HR	1,545	1,793	1,779	1,641	1,679	7:00 AM	134	52	82	8.0%	61.2%	5:00 PM	143	75	68	8.5%	52.4%	2	35	--	--	2	22S23E06
93	C-478E	1 Mile West of SR 471	01/28/14	24-HR	2,804	1,744	1,661	1,541	1,123	7:00 AM	99	84	15	8.8%	84.8%	5:30 PM	128	54	74	11.4%	57.8%	2	55	--	--	2	21S22E35
94	C-478W	1 Mile East of US 301	01/28/14	24-HR	3,640	2,056	1,989	1,900	1,840	7:30 AM	141	57	84	7.7%	59.6%	5:15 PM	206	116	90	11.2%	56.3%	2	55	--	--	2	21S22E33
95	C-478A	500' West of SR 471	01/28/14	24-HR	601	612	625	575	834	7:00 AM	111	73	38	13.3%	65.8%	3:45 PM	81	32	49	9.7%	60.5%	2	55	--	--	2	22S22E01
97	C-48E	500' West of CR 747	01/28/14	24-HR	5,838	5,579	5,912	5,292	6,146	7:45 AM	454	187	267	7.4%	58.8%	3:30 PM	527	251	276	8.6%	52.4%	2	55	--	--	2	21S22E23
98	C-48E	300' East of CR 747	01/28/14	24-HR	4,735	4,575	4,900	4,341	5,138	7:15 AM	375	136	239	7.3%	63.7%	4:45 PM	417	188	229	8.1%	54.9%	3	55	--	--	2	21S22E23
99	C-48E	300' West of Old RR Tracks	01/28/14	24-HR	4,932	4,291	4,241	4,410	4,967	7:00 AM	344	166	178	6.9%	51.7%	4:45 PM	416	173	243	8.4%	58.4%	2	55	--	--	2	21S23E21
100	C-48E	500' West of CR 702	01/28/14	24-HR	3,407	2,437	2,698	2,694	3,222	7:15 AM	219	150	69	6.8%	68.5%	4:45 PM	249	96	153	7.7%	61.4%	2	35	--	--	2	21S23E23
101	C-48E	50' NE of CR 558	03/04/14	24-HR	2,749	1,301	2,268	2,115	2,309	7:30 AM	191	141	50	8.3%	73.8%	4:45 PM	212	83	129	9.2%	60.8%	2	55	--	--	2	21S23E12
102	C-48W	100' West of C-575	01/28/14	24-HR	3,679	3,277	3,863	3,398	3,281	7:00 AM	211	126	85	6.4%	59.7%	3:45 PM	319	123	196	9.7%	61.4%	2	45	--	--	2	20S21E30
103	C-48W	400' West of CR 616	01/28/14	24-HR	5,062	4,754	5,306	4,778	5,080	7:15 AM	344	237	107	6.8%	68.9%	3:45 PM	436	181	255	8.6%	58.5%	2	45	--	--	2	21S21E13
105	C-48W	250' East of CR 616	01/28/14	24-HR	7,896	7,004	7,437	5,776	7,167	7:15 AM	447	304	143	6.2%	68.0%	3:45 PM	645	278	367	9.0%	56.9%	5	45	--	--	2	21S22E18
108	C-48W	150' East of CR 313	01/28/14	24-HR	10,146	8,174	8,740	8,457	8,956	7:15 AM	501	320	181	5.6%	63.9%	3:45 PM	783	327	456	8.7%	58.2%	5	45	--	--	2	21S22E07
111	C-575	1.5 Miles South of C-48W	01/28/14	24-HR	675	643	651	637	602	7:00 AM	48	23	25	8.0%	52.1%	3:00 PM	64	18	46	10.6%	71.9%	2	55	--	--	2	21S21E06
112	C-575	300' North of C-476W	01/28/14	24-HR	823	793	848	808	801	7:00 AM	73	22	51	9.1%	69.9%	4:15 PM	68	47	21	8.5%	69.1%	2	55	--	--	2	21S21E20
113	C-501	780' South of C-468	01/30/14	24-HR	2,221	2,390	2,295	2,304	2,376	6:45 AM	285	94	191	12.0%	67.0%	3:15 PM	253	179	74	10.6%	70.8%	2	55	--	--	1	19S23E34
114	C-501	200' North of CR 500	01/14/14	24-HR	2,238	1,916	2,238	2,260	2,340	7:15 AM	242	101	141	10.3%	58.3%	3:15 PM	270	179	91	11.5%	66.3%	2	45	--	--	1	20S23E10
115	C-673	400' East of I-75	01/28/14	24-HR	1,847	1,693	1,557	1,438	1,503	8:15 AM	102	48	54	6.8%	52.9%	4:00 PM	141	95	46	9.4%	67.4%	2	45	--	--	2	22S21E03
116	C-673	1000' East of CR 674	01/28/14	24-HR	1,604	1,301	1,564	1,202	1,300	7:30 AM	103	51	52	7.9%	50.5%	4:30 PM	118	68	50	9.1%	57.6%	2	40	--	--	2	21S22E31
119	N. Morse Blvd	150' N of C-466E Gate	01/22/14	24-HR	9,319	19,621	18,077	15,510	19,109	9:00 AM	1,429	769	660	7.5%	53.8%	3:45 PM	1,804	775	1,029	9.4%	57.0%	2	35	1,662	1,830	1-A	18S23E13
128	N. Morse Blvd.	300' S of Morse CrI	01/22/14	24-HR	5,553	11,205	9,198	10,857	11,903	9:00 AM	938	541	397	7.9%	57.7%	3:00 PM	1,079	469	610	9.1%	56.5%	4	35	--	491	1-A	18S23E01
131	Rio Grande Ave	200' E of Morse Blvd	01/22/14	24-HR	4,161	8,211	6,008	8,168	8,004	9:00 AM	581	341	240	7.3%	58.7%	3:00 PM	869	406	463	10.9%	53.3%	2	25	--	1,517	1-A	18S23E13
134	El Camino Real	200' W of Morse CrI	02/12/14	24-HR	6,149	14,206	13,268	15,616	13,390	9:00 AM	1,090	551	539	8.1%	50.6%	3:00 PM	1,207	640	567	9.0%	53.0%	2	20	--	--	1-A	18S23E01
137	El Camino Real	200' E of Buenos Aires Blvd	02/12/14	24-HR	6,202	12,299	12,864	17,960	12,994	9:00 AM	1,078	640	438	8.3%	59.4%	3:00 PM	1,180	564	616	9.1%	52.2%	4	35	--	--	1-A	18S23E01
140	El Camino Real	200' W. of Buenos Aires Blvd	02/12/14	24-HR	4,469	15,801	18,533	10,568	19,294	9:00 AM	1,640	999	641	8.5%	60.9%	3:00 PM	1,725	811	914	8.9%	53.0%	4	35	--	--	1-A	18S23E01
143	El Camino Real	300' E of Buena Vista CrI	01/22/14	24-HR	8,168	17,097	16,801	14,773	16,646	9:00 AM	1,286	690	596	7.7%	53.7%	3:15 PM	1,393	599	794	8.4%	57.0%	4	35	--	--	1-A	18S23E03
146	Buenos Aires	200' N. of El Camino Real	01/22/14	24-HR	5,309	10,906	11,585	12,712	11,277	9:00 AM	896	507	389	7.9%	56.6%	3:00 PM	1,034	434	600	9.2%	58.0%	4	30	--	--	1-A	18S23E01
149	N. Buena Vista	400' N of C-466E	01/15/14	24-HR	8,315	17,433	17,570	15,153	17,643	9:00 AM	1,232	575	657	7.0%	53.3%	3:00 PM	1,473	730	743	8.3%	50.4%	4	35	--	--	1-A	18S23E15
155	N. Buena Vista	300' N of Circle	01/22/14	24-HR	8,072	16,667	16,146	17,058	15,471	9:00 AM	1,162	458	704	7.5%	60.6%	3:00 PM	1,308	731	577	8.5%	55.9%	4	35	--	--	1-A	18S23E03
158	S. Morse Blvd	200' S. of Mariposa Way	01/21/14	24-HR	18,995	20,989	26,188	21,365	26,665	8:45 AM	1,863	1,121	742	7.0%	60.2%	3:30 PM	2,297	1,031	1,266	8.6%	55.1%	4	35	--	--	1-A	18S23E13
164	S. Morse Blvd	200' S. of Stillwater Trail	02/06/14	24-HR	5,789	12,120	13,232	10,636	14,710	9:00 AM	1,083	643	440	7.4%	59.4%	3:00 PM	1,319	671	648	9.0%	50.9%	4	35	--	--	1-A	18S23E24
170	S.Morse Blvd.	200' S of N. Odell Circle	02/06/14	24-HR	3,393	7,232	8,199	7,166	10,100	9:00 AM	708	381	327	7.0%	53.8%	3:00 PM	898	462	436	8.9%	51.4%	4	35	--	--	1-A	18S23E25
176	S. Morse Blvd	200' S. of Bonita Blvd	02/06/14	24-HR	3,670	7,622	8,688	7,589	10,258	9:00 AM	722	361	361	7.0%	50.0%	3:00 PM	925	456	469	9.0%	50.7%	4	35	--	--	1-A	18S23E36
182	S.Morse Blvd.	200' S. of S. Odell Circle	02/05/14	24-HR	6,183	12,830	13,918	12,164	17,380	9:00 AM	1,260	562	698	7.2%	55.4%	3:00 PM	1,655	879	776	9.5%	53.1%	4	35	--	--	1-A	19S23E01

**Sumter County Annual Traffic Counts
2014 Volumes Summary**

Sta ID	Street	Location Description	Start Date	Duration						A.M. Peak Hour					P.M. Peak Hour					# of Lanes	Posted Speed	Golf Cart		Map Page	TRS		
					2010	2011	2012	2013	2014	Time	Total	NB/EB	SB/WB	'K'	'D'	Time	Total	NB/EB	SB/WB			'K'	'D'			2013	2014
185	Belvedere Blvd.	200' S. of C-466E	02/04/14	24-HR	5,571	12,447	9,253	8,197	9,456	8:45 AM	645	363	282	6.8%	56.3%	3:00 PM	1,159	521	638	12.3%	55.0%	2	30	--	3,335	1-A	18S23E16
187	Belvedere Blvd.	200' W. of Buena Vista Blvd	02/04/14	24-HR	4,484	8,473	5,898	7,432	6,384	9:00 AM	474	239	235	7.4%	50.4%	3:00 PM	885	447	438	13.9%	50.5%	2	30	2,527	3,496	1-A	18S23E15
198	Canal St	200' S of Stillwater Trl	02/05/14	24-HR	3,124	6,183	4,740	5,800	4,911	9:00 AM	417	258	159	8.5%	61.9%	3:15 PM	607	280	327	12.4%	53.9%	2	35	1,504	1,896	1-A	18S23E23
204	Canal St	200' S. of N. Odell Circle	02/05/14	24-HR	3,786	8,706	5,375	6,614	5,519	8:45 AM	403	265	138	7.3%	65.8%	3:30 PM	690	291	399	12.5%	57.8%	2	30	1,853	2,451	1-A	18S23E26
213	Canal St	200' N. of S. Odell Circle	02/05/14	24-HR	2,695	5,131	3,439	4,455	3,501	9:00 AM	274	146	128	7.8%	53.3%	3:30 PM	454	221	233	13.0%	51.3%	2	20	1,508	1,598	1-A	18S23E35
216	Canal St	200' S. of S. Odell Circle	02/13/14	24-HR	1,885	3,030	2,318	2,766	2,764	8:30 AM	222	112	110	8.0%	50.5%	3:00 PM	285	166	119	10.3%	58.2%	2	25	838	580	1-A	19S23E02
222	Odell Circle	200' E of Buena Vista Blvd N. End	02/04/14	24-HR	2,516	5,472	3,993	3,957	3,786	8:30 AM	287	119	168	7.6%	58.5%	4:00 PM	464	237	227	12.3%	51.1%	2	30	1,243	1,969	1-A	18S23E26
228	Odell Circle	200' W. of S. Morse Blvd	01/22/14	24-HR	2,843	4,511	2,273	4,480	4,129	9:00 AM	297	150	147	7.2%	50.5%	4:00 PM	503	234	269	12.2%	53.5%	2	30	1,393	1,197	1-A	18S23E26
231	Odell Circle	200' E of S. Morse Blvd gate (N. end)	01/22/14	24-HR	1,695	6,645	5,123	5,131	5,401	9:00 AM	351	125	226	6.5%	64.4%	4:15 PM	604	338	266	11.2%	56.0%	2	25	1,032	913	1-A	18S23E25
237	Odell Circle	200' W of S Morse Blvd gate (S. end)	02/18/14	24-HR	3,848	7,491	4,796	5,248	4,681	9:00 AM	376	216	160	8.0%	57.4%	3:45 PM	708	326	382	15.1%	54.0%	2	25	1,686	3,274	1-A	19S23E01
240	Odell Circle	200' E. of Canal St	02/05/14	24-HR	3,599	8,586	4,572	5,674	5,073	9:00 AM	381	208	173	7.5%	54.6%	3:00 PM	720	369	351	14.2%	51.3%	2	35	1,947	2,405	1-A	19S23E02
243	Odell Circle	200' W. of Canal St	02/18/14	24-HR	6,557	8,055	4,042	4,008	4,544	8:45 AM	378	221	157	8.3%	58.5%	3:15 PM	696	327	369	15.3%	53.0%	2	30	--	3,248	1-A	19S23E02
246	Odell Circle	200' E. of S. Buena Vista Blvd	02/19/14	24-HR	2,787	6,448	4,372	5,598	4,768	8:30 AM	365	132	233	7.7%	63.8%	4:45 PM	697	364	333	14.6%	52.2%	2	25	1,899	3,244	1-A	18S23E34
249	Bailey Trail	200' W of S Buena Vista Blvd (N. end)	02/04/14	24-HR	4,355	9,602	3,516	10,774	10,420	8:30 AM	702	441	261	6.7%	62.8%	3:00 PM	1,199	635	564	11.5%	53.0%	2	25	--	2,322	1-A	18S23E26
252	Bailey Trail	200 N of St. Charles Place	02/19/14	24-HR	2,542	9,961	8,560	3,447	8,630	8:30 AM	619	368	251	7.2%	59.5%	5:30 PM	483	472	11	5.6%	97.7%	2	30	1,099	3,831	1-A	18S23E27
255	Bailey Trail	200' S of St. Charles Place	02/11/14	24-HR	1,692	4,138	2,804	9,374	2,785	8:45 AM	233	118	115	8.4%	50.6%	3:00 PM	347	169	178	12.5%	51.3%	2	20	2,706	1,497	1-A	18S23E34
258	Bailey Trail	200' W of S. Buena Vista Blvd (S. End)	02/19/14	24-HR	2,141	5,043	3,118	3,462	4,203	9:00 AM	359	247	112	8.5%	68.8%	3:45 PM	526	268	258	12.5%	51.0%	2	20	--	1,455	1-A	18S23E34
261	Stillwater Trail	200' E of S. Buena Vista Blvd	02/04/14	24-HR	3,373	10,328	9,756	8,736	9,958	9:00 AM	749	424	325	7.5%	56.6%	3:00 PM	1,393	603	790	14.0%	56.7%	4	35	--	5,857	1-A	18S23E23
264	Stillwater Trail	200' W of S. Morse Blvd	01/22/14	24-HR	3,684	9,170	9,408	9,262	10,299	9:00 AM	662	369	293	6.4%	55.7%	3:45 PM	927	415	512	9.0%	55.2%	4	20	--	431	1-A	18S23E24
267	Stillwater Trail	200' E. of S. Morse Blvd gate	02/12/14	24-HR	2,674	6,590	3,665	7,598	5,116	9:00 AM	407	179	228	8.0%	56.0%	3:00 PM	573	339	234	11.2%	59.2%	2	20	--	1,080	1-A	18S23E24
270	Stillwater Trail	200' E. of Odell Circle	02/06/14	24-HR	1,880	3,756	2,601	3,416	3,326	9:00 AM	253	110	143	7.6%	56.5%	3:00 PM	418	185	233	12.6%	55.7%	2	20	--	840	1-A	18S23E25
273	C-101	100' S. of Woodridge Dr	02/04/14	24-HR	0	5,650	6,542	7,092	6,789	7:00 AM	588	190	398	8.7%	67.7%	4:30 PM	585	350	235	8.6%	59.8%	2	35	--	--	1-A	18S23E16
274	C-101	600' N. of Woodridge Dr	02/04/14	24-HR	0	2,652	2,789	3,095	3,687	7:00 AM	509	120	389	13.8%	76.4%	5:15 PM	338	214	124	9.2%	63.3%	2	35	--	--	1-A	18S23E09
275	C-100	150' S. of C-466E	01/21/14	24-HR	0	1,191	1,298	5,748	1,255	6:45 AM	120	41	79	9.6%	65.8%	4:30 PM	115	71	44	9.2%	61.7%	2	35	--	--	1-A	18S24E19
276	C-103	200' N of Woodridge Dr	02/04/14	24-HR	0	1,577	2,002	1,212	2,394	7:00 AM	374	104	270	15.6%	72.2%	3:30 PM	189	99	90	7.9%	52.4%	2	35	--	--	1-A	18S23E08
278	C-103	200' N of Wal Mart N.B.	01/14/14	24-HR	0	2,170	2,164	2,034	2,663	7:00 AM	396	115	281	14.9%	71.0%	4:30 PM	234	92	142	8.8%	60.7%	4	35	--	--	1-A	18S23E17
281	C-616	200' S. of C-48W	01/28/14	24-HR	3,381	3,163	3,102	3,314	3,425	7:00 AM	215	126	89	6.3%	58.6%	3:30 PM	303	138	165	8.8%	54.5%	2	45	--	--	2	21S21E13
283	S. Buena Vista	200' S. of Prof. Plaza	01/15/14	24-HR	8,883	16,912	17,683	14,734	19,125	9:00 AM	1,321	541	780	6.9%	59.0%	3:00 PM	1,647	839	808	8.6%	50.9%	4	35	--	--	1-A	18S23E15
286	S. Buena Vista	200' S of Laurel Manor Dr	01/15/14	24-HR	9,126	18,975	18,254	13,737	20,327	9:00 AM	1,357	800	557	6.7%	59.0%	3:00 PM	1,701	835	866	8.4%	50.9%	4	35	--	--	1-A	18S23E15
289	S. Buena Vista	200' N of Belvidere Blvd.	01/21/14	24-HR	0	19,099	18,799	15,212	20,492	9:00 AM	1,456	820	636	7.1%	56.3%	3:00 PM	1,727	836	891	8.4%	51.6%	4	35	--	--	1-A	18S23E15
292	S. Buena Vista	200' S of Belvidere Blvd.	01/21/14	24-HR	9,119	19,153	19,001	15,145	20,922	9:00 AM	1,392	727	665	6.7%	52.2%	3:00 PM	1,818	866	952	8.7%	52.4%	4	35	--	--	1-A	18S23E15
295	S. Buena Vista	200' S of Rainey Trl.	01/21/14	24-HR	9,909	21,221	20,960	16,734	23,372	9:00 AM	1,578	803	775	6.8%	50.9%	3:00 PM	2,056	992	1,064	8.8%	51.8%	4	35	--	--	1-A	18S23E22
299	S. Buena Vista	200' N of Stillwater Trl.	02/03/14	24-HR	6,959	16,395	17,589	13,593	18,971	9:00 AM	1,305	721	584	6.9%	55.2%	3:00 PM	1,616	736	880	8.5%	54.5%	4	35	--	--	1-A	18S23E23
302	S. Buena Vista	300' S of Stillwater Trl.	02/04/14	24-HR	3,657	15,002	19,398	17,331	23,008	9:00 AM	1,615	928	687	7.0%	57.5%	3:15 PM	1,968	844	1,124	8.6%	57.1%	4	35	--	--	1-A	18S23E26
305	S. Buena Vista	200' S. of N. Bailey Trail S. End	02/25/14	24-HR	3,366	9,695	9,258	9,016	13,857	9:00 AM	996	546	450	7.2%	54.8%	3:00 PM	1,203	555	648	8.7%	53.9%	4	35	--	--	1-A	18S23E26
308	S. Buena Vista	1320' S of St. Charles Place	02/24/14	24-HR	2,372	6,460	7,290	7,517	11,989	9:00 AM	846	437	409	7.1%	51.7%	3:15 PM	1,054	507	547	8.8%	51.9%	4	35	--	--	1-A	18S23E35
311	S. Buena Vista	300' S of S. Bailey Trail	02/25/14	24-HR	0	5,672	7,437	8,183	13,503	9:00 AM	928	434	494	6.9%	53.2%	3:00 PM	1,201	601	600	8.9%	50.0%	4	35	--	--	1-A	18S23E34
314	S. Buena Vista	300' S. of Turtle Mound Path	02/18/14	24-HR	2,624	7,935	10,868	11,605	18,280	9:00 AM	1,256	559	697	6.9%	55.5%	3:30 PM	1,549	808	741	8.5%	52.2%	4	35	--	--	1-A	19S23E03
326	Bonita Blvd.	200' E. of Buena Vista Blvd.	02/04/14	24-HR	1,555	3,819	3,057	2,889	3,390	8:00 AM	249	126	123	7.3%	50.6%	3:00 PM	382	187	195	11.3%	51.0%	2	20	625	798	1-A	18S23E35
329	Bonita Blvd.	200' W. of Morse Blvd.	02/11/14	24-HR	1,707	3,617	3,210	3,014	3,664	9:00 AM	274	178	96	7.5%	65.0%	3:45 PM	367	170	197	10.0%	53.7%	2	20	370	596	1-A	18S23E36
330	C-727	300' North of SR 50	u/c	24-HR	0	177	148	191	n/a	n/a	n/a	n/a	n/a	n/a	n/a	n/a	n/a	n/a	n/a	n/a	n/a	n/a	--	--	2	22S23E19	
332	C-721	300' East of C-471	01/28/14	24-HR	0	686	604	657	734	7:15 AM	72	21	51	9.8%	70.8%	5:45 PM	73	40	33	9.9%	54.8%	2	35	--	--	2	22S23E07
334	C-747	300' North of C-730	01/28/14	24-HR	0	1,164	1,310	1,180	1,296	8:00 AM	150	84	66	11.6%	56.0%	3:00 PM	145	75	70	11.2%	51.7%	2	40	--	--	2	21S22E35
336	C-747	300' South of C-730	01/28/14	24-HR	0	683	690	648	716	9:00 AM	51	38	13	7.1%	74.5%	4:15 PM	61	21	40	8.5%	65.6%	2	40	--	--	2	21S22E35

**Sumter County Annual Traffic Counts
2014 Volumes Summary**

Sta ID	Street	Location Description	Start Date	Duration						A.M. Peak Hour					P.M. Peak Hour					# of Lanes	Posted Speed	Golf Cart		Map Page	TRS		
					2010	2011	2012	2013	2014	Time	Total	NB/EB	SB/WB	'K'	'D'	Time	Total	NB/EB	SB/WB			'K'	'D'			2013	2014
340	C-229	300' North of SR 44	01/14/14	24-HR	0	2,138	3,010	2,131	2,050	7:00 AM	199	85	114	9.7%	57.3%	5:15 PM	186	92	94	9.1%	50.5%	2	45	--	--	1	18S22E34
342	C-229	1000' North of C-462	01/14/14	24-HR	0	2,039	1,841	1,937	1,935	7:00 AM	188	80	108	9.7%	57.4%	5:15 PM	185	92	93	9.6%	50.3%	2	45	--	--	342	342
344	C-237	300' South of C-466	02/11/14	24-HR	0	386	359	377	363	8:15 AM	31	17	14	8.5%	54.8%	3:00 PM	42	21	21	11.6%	50.0%	2	40	--	--	1	18S22E15
120	CR 209	South of CR 466	01/14/14	24-HR	721	724	449	761	833	7:00 AM	103	69	34	12.4%	67.0%	3:15 PM	83	46	37	10.0%	55.4%	2	45	--	--	1-A	18S22E13
200	CR 213	South of CR 44A	01/14/14	24-HR	468	406	425	457	411	7:15 AM	27	9	18	6.6%	66.7%	6:00 PM	45	24	21	10.9%	53.3%	2	30	--	--	1	19S22E01
300	US 301	South of Turnpike Ramps	02/27/14	24-HR	9,187	9,092	10,253	10,323	10,921	6:45 AM	778	413	365	7.1%	53.1%	4:30 PM	1,008	512	496	9.2%	50.8%	2	55	--	--	1	19S23E18
360	US 301	Southwest of CR 466A	01/14/14	24-HR	21,062	16,850	21,622	18,577	19,103	7:30 AM	1,465	631	834	7.7%	56.9%	4:15 PM	1,561	863	698	8.2%	55.3%	4	35	--	--	1	19S23E06
400	US 301	South of CR 462	02/04/14	24-HR	14,600	13,125	18,507	18,727	18,174	7:00 AM	1,372	611	761	7.5%	55.5%	3:15 PM	1,438	817	621	7.9%	56.8%	4	40	--	--	1-A	18S23E32
420	US 301	South of CR 466	02/25/14	24-HR	17,190	16,301	21,993	19,185	24,424	7:00 AM	1,917	851	1,066	7.8%	55.6%	4:30 PM	2,085	1,304	781	8.5%	62.5%	4	45	--	--	1-A	18S23E18
440	US 301	North of CR 466	02/04/14	24-HR	14,109	14,229	19,001	16,547	17,640	7:00 AM	1,207	138	1,069	6.8%	88.6%	3:30 PM	1,718	1,017	701	9.7%	59.2%	4	45	--	--	1-A	18S23E07
500	CR 139	South of CR 466A	02/13/14	24-HR	1,589	4,540	5,760	6,492	8,522	7:15 AM	603	309	294	7.1%	51.2%	4:30 PM	703	354	349	8.2%	50.4%	4	35	--	--	1	19S23E05
1100	CR 44A	East of CR 213	02/18/14	24-HR	828	1,048	1,100	1,007	1,052	7:15 AM	84	31	53	8.0%	63.1%	4:00 PM	99	67	32	9.4%	67.7%	2	35	--	--	1	19S23E06
348	Buena Vista Blvd	South of CR 466a	02/13/14	24-HR	0	0	4,726	9,279	14,258	9:00 AM	891	422	469	6.2%	52.6%	3:15 PM	1,302	740	562	9.1%	56.8%	4	35	--	--	1	19S23E03
350	Buena Vista Blvd	N of SR 44	02/13/14	24-HR	0	0	2,328	2,929	5,171	6:45 AM	401	293	108	7.8%	73.1%	4:15 PM	455	168	287	8.8%	63.1%	4	35	--	--	1	19S23E16
352	Buena Vista Blvd	S of El Camino Real / Glenview Rd	01/22/14	24-HR	0	0	17,646	14,697	20,049	9:00 AM	1,478	778	700	7.4%	52.6%	3:00 PM	1,655	868	787	8.3%	52.4%	4	35	--	--	1-A	18S23E03
354	C-44A	NW of CR 143	02/18/14	24-HR	0	0	830	1,122	1,262	7:15 AM	98	31	67	7.8%	68.4%	3:30 PM	115	54	61	9.1%	53.0%	2	35	--	--	1	19S23E15
356	C-462	E of CR 229	01/14/14	24-HR	0	0	1,535	1,239	1,125	7:00 AM	98	70	28	8.7%	71.4%	4:30 PM	108	45	63	9.6%	58.3%	2	45	--	--	1	18S22E26
358	C-466A	W of Canal St	02/18/14	24-HR	0	0	11,701	12,478	15,540	9:00 AM	1,117	529	588	7.2%	52.6%	3:00 PM	1,269	657	612	8.2%	51.8%	4	45	--	--	1	19S23E02
452	C-469	N of SR 50	02/18/14	24-HR	0	0	1,376	1,429	1,894	6:45 AM	135	52	83	7.1%	61.5%	4:00 PM	150	58	92	7.9%	61.3%	2	55	--	--	1	19S23E06
362	C-476 E (Noble Ave)	E of Flanner Ave	01/28/14	24-HR	0	0	2,796	2,372	2,223	7:45 AM	197	55	142	8.9%	72.1%	3:45 PM	205	117	88	9.2%	57.1%	2	35	--	--	2	21S22E15
364	C-476 W	W of CR 616	01/28/14	24-HR	0	0	3,997	4,171	4,138	7:00 AM	317	224	93	7.7%	70.7%	3:45 PM	386	160	226	9.3%	58.5%	2	45	--	--	2	21S21E13
366	C-476 (Seminole Ave)	W of S. Roland St	01/28/14	24-HR	0	0	3,730	3,621	4,425	7:15 AM	335	182	153	7.6%	54.3%	3:30 PM	351	151	200	7.9%	57.0%	2	30	--	--	2	21S22E16
368	CR 48 (Florida St)	S of E. Virginia Ave	01/28/14	24-HR	0	0	3,730	3,346	3,515	7:45 AM	248	170	78	7.1%	68.5%	3:30 PM	304	145	159	8.6%	52.3%	2	30	--	--	2	21S22E16
370	C-48	E of N. Justice St	01/28/14	24-HR	0	0	6,443	5,574	6,498	8:00 AM	481	299	182	7.4%	62.2%	3:30 PM	557	287	270	8.6%	51.5%	2	35	--	--	2	21S22E16
372	C-48	E of SE 26th Dr	01/28/14	24-HR	0	0	4,251	4,183	5,104	7:15 AM	362	175	187	7.1%	51.7%	5:00 PM	424	182	242	8.3%	57.1%	2	45	--	--	2	21S22E24
374	C-48	W of CR 625	02/18/14	24-HR	0	0	10,971	2,522	5,222	7:00 AM	337	150	187	6.5%	55.5%	4:45 PM	479	189	290	9.2%	60.5%	2	45	--	--	2	21S21E11
376	C-48	E of North Ave / South Ave	03/04/14	24-HR	0	0	1,843	4,541	4,861	7:00 AM	330	160	170	6.8%	51.5%	4:45 PM	433	205	228	8.9%	52.7%	2	35	--	--	2	21S23E22
378	C-48	W of Magnolia Ave	01/28/14	24-HR	0	0	4,534	4,226	4,899	6:45 AM	328	176	152	6.7%	53.7%	5:00 PM	425	193	232	8.7%	54.6%	2	35	--	--	2	21S23E22
454	CR 139 (Powell Rd)	N of SR 44	02/13/14	24-HR	0	0	5,364	6,574	7,759	7:30 AM	524	259	265	6.8%	50.6%	4:30 PM	696	356	340	9.0%	51.1%	4	35	--	--	1	19S23E08
382	CR 156	E of CR 181	02/18/14	24-HR	0	0	620	634	729	6:15 AM	71	61	10	9.7%	85.9%	4:15 PM	97	20	77	13.3%	79.4%	2	25	--	--	1	19S23E17
386	CR 625	S of CR 48	01/28/14	24-HR	0	0	371	447	392	7:15 AM	38	19	19	9.7%	50.0%	5:00 PM	43	26	17	11.0%	60.5%	2	35	--	--	2	21S21E14
388	CR 728	W of CR 469	u/c	24-HR	0	0	351	385	n/a	n/a	n/a	n/a	n/a	n/a	n/a	n/a	n/a	n/a	n/a	n/a	n/a	n/a	--	--	2	21S23E36	
390	Seminole Ave E	W of N. Justice St	01/28/14	24-HR	0	0	941	886	847	7:30 AM	78	35	43	9.2%	55.1%	5:00 PM	79	42	37	9.3%	53.2%	2	35	--	--	390	390
392	SR 44	W of CR 243	01/14/14	24-HR	0	0	9,582	6,822	9,687	7:15 AM	741	476	265	7.6%	64.2%	4:45 PM	893	327	566	9.2%	63.4%	4	60	--	--	1	18S22E32
394	SR 44	E of CR 231	01/14/14	24-HR	0	0	9,297	7,872	8,888	7:00 AM	941	481	460	10.6%	51.1%	3:45 PM	584	285	299	6.6%	51.2%	5	60	--	--	1	18S22E33
396	SR 44	W of CR 229	01/14/14	24-HR	0	0	17,306	16,253	17,000	7:15 AM	1,182	698	484	7.0%	59.1%	4:30 PM	1,427	585	842	8.4%	59.0%	5	45	--	--	1	19S22E03
398	SR 44	E of Buena Vista Blvd	01/14/14	24-HR	0	0	14,081	STRUC	15,102	7:15 AM	1,014	556	458	6.7%	54.8%	4:30 PM	1,295	630	665	8.6%	51.4%	4	45	--	--	1	19S23E16
456	SR 44	W of CR 143	01/14/14	24-HR	0	0	14,160	STRUC	15,148	7:15 AM	1,065	603	462	7.0%	56.6%	4:30 PM	1,299	635	664	8.6%	51.1%	4	55	--	--	1	19S23E23
406	SR 471	N of CR 478 / NW 4th Ave	03/04/14	24-HR	0	0	8,091	7,534	8,761	7:00 AM	593	344	249	6.8%	58.0%	3:45 PM	634	285	349	7.2%	55.0%	2	35	--	--	2	21S23E31
404	SR 471	S of NE 2nd Ave	01/28/14	24-HR	0	0	8,942	7,911	10,212	7:00 AM	702	392	310	6.9%	55.8%	3:00 PM	752	281	471	7.4%	62.6%	2	35	--	--	2	21S23E31
402	SR 471	N of SE 1st Ave / CR 478	01/28/14	24-HR	0	0	8,006	7,415	8,340	7:00 AM	715	380	335	8.6%	53.1%	3:00 PM	591	222	369	7.1%	62.4%	2	35	--	--	2	22S23E06
408	SR 471	N of CR 520	02/13/14	24-HR	0	0	4,377	4,343	5,374	7:30 AM	390	192	198	7.3%	50.8%	4:45 PM	366	137	229	6.8%	62.6%	2	55	--	--	1	19S22E36
410	SR 48 (CR 48 W)	E of SW 20th Dr	01/28/14	24-HR	0	0	12,459	10,409	13,834	9:00 AM	775	347	428	5.6%	55.2%	3:30 PM	1,164	559	605	8.4%	52.0%	2	40	--	--	2	21S22E18
412	SR 48 (CR 48 W)	W of N. West St	01/28/14	24-HR	0	0	13,589	12,311	14,175	8:45 AM	826	437	389	5.8%	52.9%	3:15 PM	1,221	683	538	8.6%	55.9%	2	40	--	--	2	21S22E08

**Sumter County Annual Traffic Counts
2014 Volumes Summary**

Sta ID	Street	Location Description	Start Date	Duration						A.M. Peak Hour					P.M. Peak Hour					# of Lanes	Posted Speed	Golf Cart		Map Page	TRS		
					2010	2011	2012	2013	2014	Time	Total	NB/EB	SB/WB	'K'	'D'	Time	Total	NB/EB	SB/WB			'K'	'D'			2013	2014
414	SR 48 (CR 48 W)	E of N. Wall St	01/28/14	24-HR	0	0	10,971	8,984	10,530	9:00 AM	668	397	271	6.3%	59.4%	3:30 PM	984	458	526	9.3%	53.5%	2	40	--	--	2	21S22E09
416	SR 48 (Main St N)	N of W. Dade Ave	01/28/14	24-HR	0	0	11,222	STRUC	10,226	7:45 AM	728	441	287	7.1%	60.6%	3:30 PM	901	382	519	8.8%	57.6%	4	40	--	--	2	21S22E16
418	US 27/US 441/SR 500	SE of CR 109	01/22/14	24-HR	0	0	38,295	38,337	40,806	9:00 AM	2,701	1,296	1,405	6.6%	52.0%	3:00 PM	3,515	1,826	1,689	8.6%	51.9%	6	45	--	--	1-A	18S23E01
458	US 27/US 441/SR 500	SE of Buenos Aires Blvd	01/22/14	24-HR	0	0	38,590	38,632	37,124	9:00 AM	2,380	1,144	1,236	6.4%	51.9%	3:00 PM	3,259	1,700	1,559	8.8%	52.2%	6	45	--	--	1-A	18S23E18
422	US 301/SR 35 (Main St)	S of W. Noble Ave	01/28/14	24-HR	0	0	9,038	9,995	10,338	7:45 AM	766	511	255	7.4%	66.7%	4:30 PM	906	408	498	8.8%	55.0%	4	45	--	--	2	21S22E16
424	US 301/SR 35 (Noble Av)	W of N Florida St	01/28/14	24-HR	0	0	7,198	6,811	6,487	7:30 AM	489	276	213	7.5%	56.4%	4:30 PM	599	298	301	9.2%	50.3%	2	30	--	--	2	21S22E16
426	US 301/SR 35 (Noble Av)	E of N Florida St	01/28/14	24-HR	0	0	4,946	5,408	5,004	7:00 AM	441	238	203	8.8%	54.0%	4:30 PM	420	189	231	8.4%	55.0%	2	30	--	--	2	21S22E16
428	US 301/SR 35	S of CR 542	01/29/14	24-HR	0	0	5,027	4,901	4,857	7:00 AM	401	246	155	8.3%	61.3%	3:30 PM	448	187	261	9.2%	58.3%	2	55	--	--	2	21S22E09
430	US 301/SR 35	N of CR 520	02/13/14	24-HR	0	0	6,019	6,091	6,395	7:15 AM	505	263	242	7.9%	52.1%	4:30 PM	595	234	361	9.3%	60.7%	2	50	--	--	1	20S22E13
432	US 301/SR 35	S of CR 522 / N of CR 470	01/14/14	24-HR	0	0	12,208	9,685	14,394	7:15 AM	1,136	603	533	7.9%	53.1%	3:00 PM	1,364	426	938	9.5%	68.8%	3	45	--	--	1	20S22E13
434	US 301/SR 35	S of CR 470	02/13/14	24-HR	0	0	12,426	10,597	13,597	7:15 AM	1,087	583	504	8.0%	53.6%	3:45 PM	1,136	462	674	8.4%	59.3%	2	45	--	--	1	20S22E13
436	US 301/SR 35	S of Clark Ave	02/25/14	24-HR	0	0	7,796	6,989	8,609	7:00 AM	607	313	294	7.1%	51.6%	4:00 PM	709	323	386	8.2%	54.4%	2	35	--	--	1	19S22E35
438	US 301/SR 35 (Warm Springs Ave)	E of CR 523 / Stokes St	02/18/14	24-HR	0	0	8,138	8,357	8,788	7:15 AM	647	370	277	7.4%	57.2%	4:30 PM	743	343	400	8.5%	53.8%	2	45	--	--	1	19S23E30
460	US 301/SR 35 (Main St)	S of Villager RV Park / N of Turnpike	01/21/14	24-HR	0	0	17,221	15,005	16,367	7:15 AM	1,148	597	551	7.0%	52.0%	4:30 PM	1,427	706	721	8.7%	50.5%	4	45	--	--	1	19S23E18
442	US 301/SR 35	S of CR 130	01/14/14	24-HR	0	0	20,664	21,644	24,273	7:15 AM	1,881	772	1,109	7.7%	59.0%	4:30 PM	2,004	1,242	762	8.3%	62.0%	4	45	--	--	1-A	18S23E32
446	US 301/SR 35	S of CR 222	02/12/14	24-HR	0	0	19,721	21,073	24,076	7:15 AM	1,791	767	1,024	7.4%	57.2%	4:15 PM	2,287	1,396	891	9.5%	61.0%	4	55	--	--	1-A	18S23E29
448	US 301/SR 35	S of CR 472	01/21/14	24-HR	0	0	16,547	21,577	23,462	7:00 AM	1,895	871	1,024	8.1%	54.0%	4:30 PM	2,034	1,208	826	8.7%	59.4%	4	55	--	--	1-A	18S23E20
450	US 301/SR 35	S of SE 180th St / CR 12 / County Line Rd	01/22/14	24-HR	0	0	17,373	17,020	18,396	7:00 AM	1,669	495	1,174	9.1%	70.3%	4:30 PM	1,718	1,167	551	9.3%	67.9%	4	45	--	--	1-A	18S23E06
474	St. Charles Pl (N)	NW of Buena Vista Blvd (NW of golf path)	01/23/14	24-HR	0	0	3,700	3,872	3,814	9:00 AM	372	209	163	9.8%	56.2%	3:00 PM	409	204	205	10.7%	50.1%	2	20	573	629	1-A	18S23E35
476	Tamarind Grove Run	W of St Charles Pl	01/23/14	24-HR	0	0	3,124	2,093	2,856	9:00 AM	234	158	76	8.2%	67.5%	3:45 PM	361	170	191	12.6%	52.9%	2	25	515	676	1-A	18S23E33
478	Buttonwood Run	NW of St Charles Pl	01/23/14	24-HR	0	0	3,659	3,544	5,241	8:45 AM	385	217	168	7.3%	56.4%	3:00 PM	606	361	245	11.6%	59.6%	2	25	996	1,309	1-A	18S23E33
480	Pennecamp Drive	N of St Charles Pl	02/11/14	24-HR	0	0	3,415	4,382	3,923	9:00 AM	316	132	184	8.1%	58.2%	3:15 PM	506	295	211	12.9%	58.3%	2	20	1,142	1,388	1-A	18S23E34
472	St. Charles Pl	W of Bailey Trail	02/18/14	24-HR	0	0	6,973	7,909	8,922	8:45 AM	700	530	170	7.8%	75.7%	3:45 PM	1,019	501	518	11.4%	50.8%	2	20	1,934	2,734	1-A	18S23E34
464	CR 121	S of CR 128	01/23/14	24-HR	0	0	1,841	1,941	1,953	7:15 AM	177	44	133	9.1%	75.1%	4:30 PM	182	99	83	9.3%	54.4%	2	30	--	--	1-A	18S23E32
470	St. Charles Pl (S)	NW of Buena Vista Blvd (NW of golf path)	01/23/14	24-HR	0	0	7,212	4,198	7,940	9:00 AM	683	402	281	8.6%	58.9%	3:45 PM	859	381	478	10.8%	55.6%	2	20	899	1,720	1-A	19S23E03
462	CR 209	N of CR 222	01/15/14	24-HR	0	0	U/C	612	708	7:30 AM	63	4	59	8.9%	93.7%	5:00 PM	73	33	40	10.3%	54.8%	2	35	--	--	1-A	18S22E24
466	CR 102	W of CR 103	01/22/14	24-HR	0	0	831	848	983	7:00 AM	163	124	39	16.6%	76.1%	4:45 PM	116	28	88	11.8%	75.9%	2	35	--	--	1-A	18S23E05
468	CR 104	W of CR 103	01/14/14	24-HR	0	0	1,384	1,480	1,755	7:00 AM	378	317	61	21.5%	83.9%	4:30 PM	179	58	121	10.2%	67.6%	2	35	--	--	1-A	18S23E05
482	Odell Circle	NE of Morse Blvd N (N)	02/18/14	24-HR	0	0	5,310	10,461	6,791	9:00 AM	546	237	309	8.0%	56.6%	3:00 PM	883	485	398	13.0%	54.9%	2	30	--	3,053	1-A	18S23E36
483	Hillsborough Tr	East of Buena Vista Blvd	02/12/14	24-HR	0	0	0	1,955	7,548	6:45 AM	707	565	142	9.4%	79.9%	3:30 PM	824	252	572	10.9%	69.4%	2	35	--	--	1	19S23E10
484	CR 209	South of CR 462	02/11/14	24-HR	0	676	0	7,530	491	7:15 AM	39	12	27	7.9%	69.2%	4:45 PM	56	29	27	11.4%	51.8%	2	35	--	--	1-A	18S22E36
485	Morse Blvd	South of Pinellas Place	01/21/14	24-HR	0	0	0	244	1,852	6:45 AM	157	24	133	8.5%	84.7%	3:45 PM	163	106	57	8.8%	65.0%	4	35	--	--	1	19S23E01
486	Anna Maria Ave	North of Hillsborough Tr	02/12/14	24-HR	0	0	0	745	1,649	9:00 AM	152	75	77	9.2%	50.7%	3:15 PM	119	71	48	7.2%	59.7%	2	35	--	--	1	19S23E11
487	Charlotte Crt	North of Hillsborough Tr	02/12/14	24-HR	0	0	0	592	975	9:00 AM	79	31	48	8.1%	60.8%	3:00 PM	106	63	43	10.9%	59.4%	2	35	--	--	1	19S23E11
488	Pinellas Pl	East of Buena Vista Blvd	01/21/14	24-HR	0	0	0	7,620	8,219	9:00 AM	622	288	334	7.6%	53.7%	3:15 PM	748	403	345	9.1%	53.9%	2	35	--	--	1	19S23E03
489	Talley Ridge Dr	West of Buena Vista Blvd (Intersection South of El Camino Real)	01/22/14	24-HR	0	0	0	2,653	3,741	8:45 AM	277	154	123	7.4%	55.6%	4:00 PM	347	139	208	9.3%	59.9%	2	35	--	--	1-A	18S23E10
490	Morse Blvd	North of Pinellas Place	01/21/14	24-HR	0	0	0	7,208	11,024	8:30 AM	762	430	332	6.9%	56.4%	3:00 PM	924	446	478	8.4%	51.7%	4	35	--	--	1	19S23E01
491	Oak Forest Dr	South of Talley Ridge Dr	01/22/14	24-HR	0	0	0	2,198	2,300	8:45 AM	165	75	90	7.2%	54.5%	3:30 PM	226	123	103	9.8%	54.4%	2	35	--	--	1-A	18S23E10
492	Parr Dr	East of Belevedere Dr	02/04/14	24-HR	0	0	0	3,702	4,899	9:00 AM	348	166	182	7.1%	52.3%	3:00 PM	490	221	269	10.0%	54.9%	2	35	--	--	1-A	18S23E16
493	Triggerfish Run	West of Pennecamp Dr	02/18/14	24-HR	0	0	0	1,014	1,539	9:00 AM	80	58	22	5.2%	72.5%	3:30 PM	139	64	75	9.0%	54.0%	2	35	--	--	1-A	18S23E28
800	CR 472	West of Lynnhaven Ln	02/11/14	24-HR	3,091	3,700	4,141	4,348	5,421	7:15 AM	535	365	170	9.9%	68.2%	3:15 PM	485	248	237	8.9%	51.1%	2	35	--	--	1-A	18S23E21
1120	CR 44A	West of CR 139 (Powell Rd)	02/11/14	24-HR	1,576	1,308	1,565	1,583	2,602	7:15 AM	232	161	71	8.9%	69.4%	3:00 PM	261	124	137	10.0%	52.5%	4	35	--	--	1	19S23E08
1200	SR 44	West of US 301	02/13/14	24-HR	14,621	13,090	17,078	16,442	18,206	7:30 AM	1,149	494	655	6.3%	57.0%	4:30 PM	1,468	801	667	8.1%	54.6%	4	45	--	--	1	19S23E07

**Sumter County Annual Traffic Counts
2014 Volumes Summary**

Sta ID	Street	Location Description	Start Date	Duration						A.M. Peak Hour					P.M. Peak Hour					# of Lanes	Posted Speed	Golf Cart		Map Page	TRS		
					2010	2011	2012	2013	2014	Time	Total	NB/EB	SB/WB	'K'	'D'	Time	Total	NB/EB	SB/WB			'K'	'D'			2013	2014
1220	SR 44	East of US 301	01/14/14	24-HR	12,608	12,567	16,486	15,484	19,160	7:15 AM	1,255	716	539	6.6%	57.1%	4:30 PM	1,658	746	912	8.7%	55.0%	4	45	--	--	1	19S23E07
1240	SR 44	West of Sumter Lake C.L.	01/14/14	24-HR	14,482	14,101	16,828	13,234	17,205	7:15 AM	1,218	692	526	7.1%	56.8%	4:30 PM	1,472	672	800	8.6%	54.3%	4	55	--	--	1	19S23E24
1402	CR 209	North of CR 466	02/11/14	24-HR	642	565	454	401	437	6:30 AM	51	17	34	11.7%	66.7%	5:15 PM	60	36	24	13.7%	60.0%	2	35	--	--	1-A	18S22E13
3202	US 301	South of SR 44	02/04/14	24-HR	13,561	13,249	15,080	15,128	17,240	7:00 AM	1,206	644	562	7.0%	53.4%	3:15 PM	1,376	739	637	8.0%	53.7%	4	45	--	--	1	19S23E18
3402	US 301	North of SR 44	01/14/14	24-HR	23,059	18,516	23,070	20,503	20,736	7:30 AM	1,406	713	693	6.8%	50.7%	3:30 PM	1,742	856	886	8.4%	50.9%	5	40	--	--	1	19S23E07
93.1	C-478E	1 Mile West of SR 471	01/27/14	24-HR+Mon	0	0	1,406	3,352	3,745	9:00 AM	505	394	111	13.5%	78.0%	3:00 PM	284	184	100	7.6%	64.8%	2	55	--	--	2	21S22E35
95.1	C-478A	500' West of SR 471	01/27/14	24-HR+Mon	0	0	593	621	870	7:15 AM	88	64	24	10.1%	72.7%	3:45 PM	90	43	47	10.3%	52.2%	2	55	--	--	2	22S22E01
332.1	C-721	300' East of C-471	01/27/14	24-HR+Mon	0	0	595	766	747	7:15 AM	62	14	48	8.3%	77.4%	4:45 PM	82	42	40	11.0%	51.2%	2	35	--	--	2	22S23E07