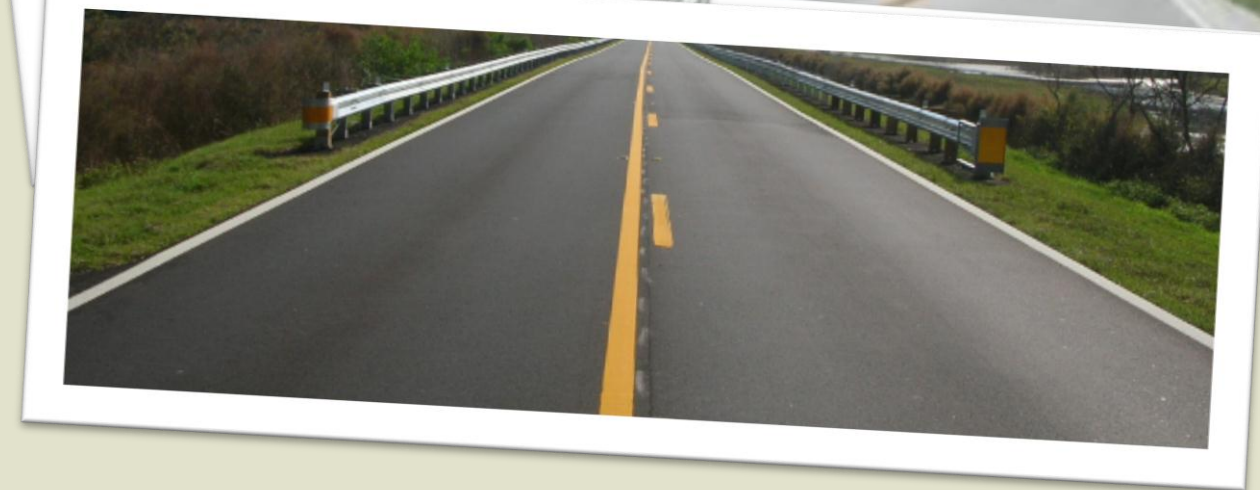
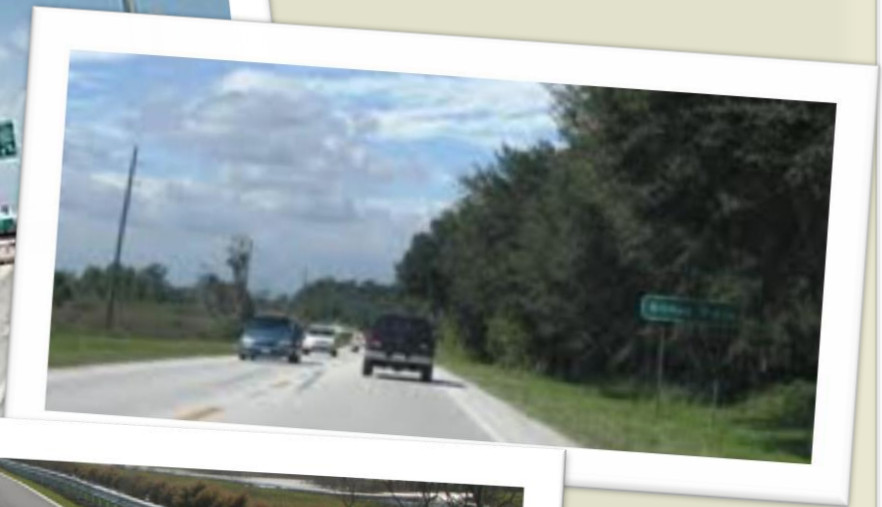
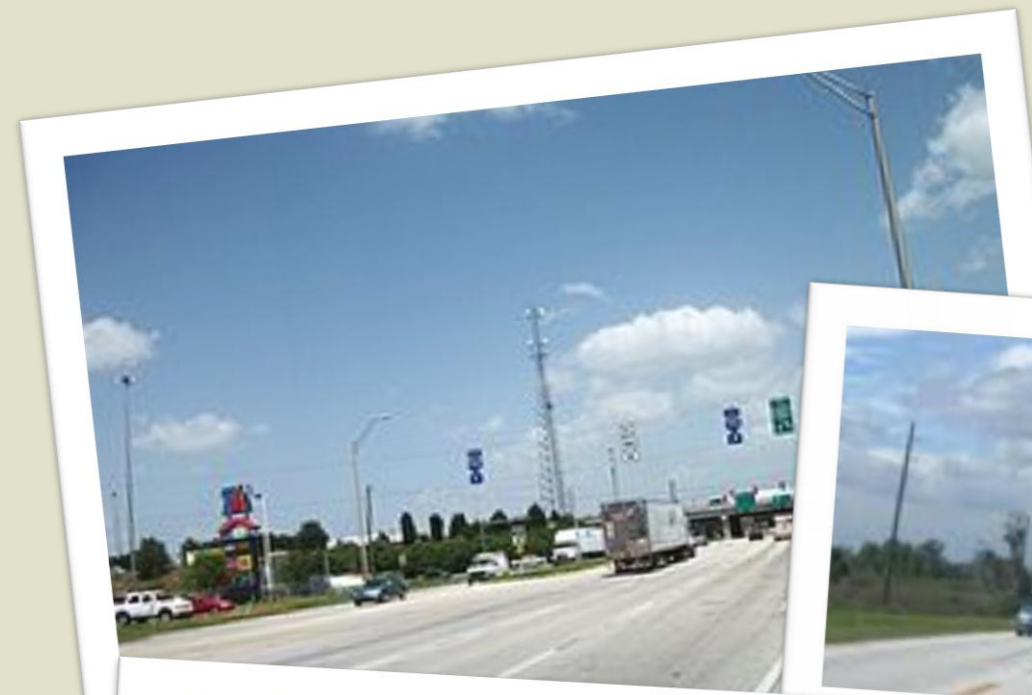
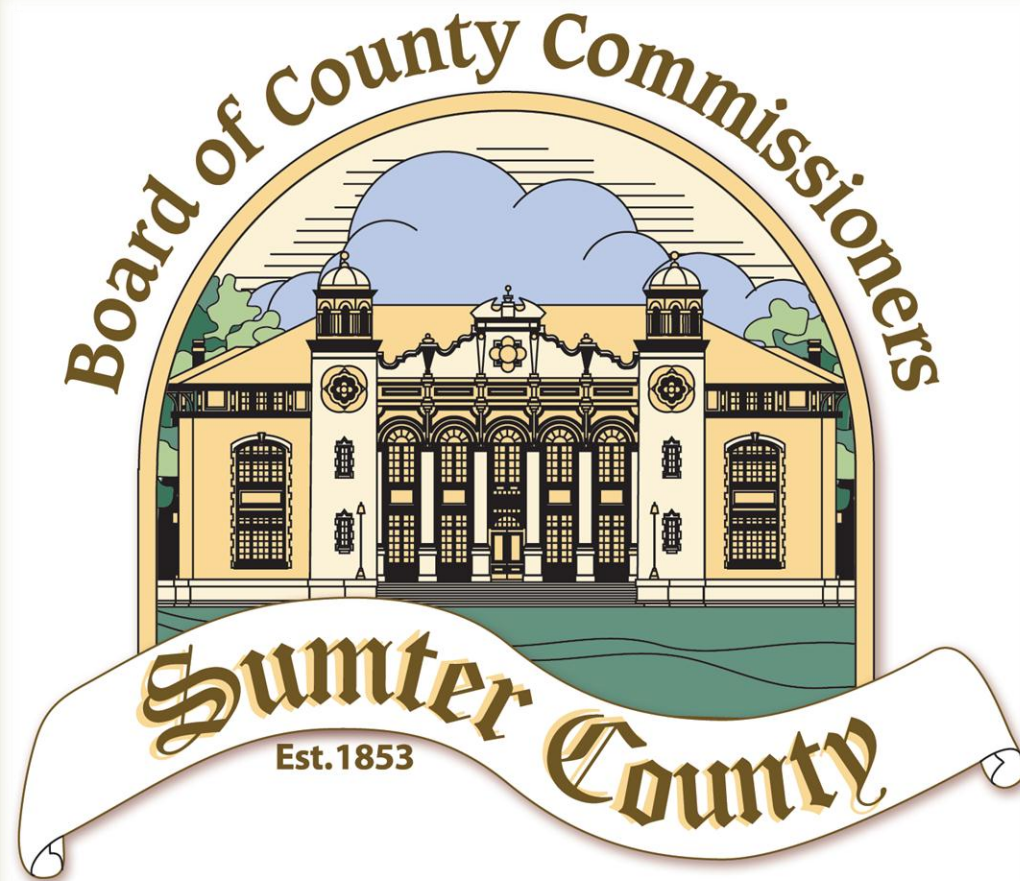


FLORIDA
Sumter County



2012 TRAFFIC COUNTS



SUMTER COUNTY
ANNUAL TRAFFIC COUNT PROGRAM
2012 TRAFFIC REPORT

Every year, the Lake~Sumter Metropolitan Planning Organization (MPO), in cooperation and partnership with Sumter County Public Works Department, implements a traffic count program. The MPO collects and analyzes the traffic data, and subsequently uses the information to identify traffic flow trends over time and to support the decision-making process related to road maintenance and project development. The traffic data is used by the MPO, County, municipalities within the County, and other transportation agencies in the review of road improvement projects, traffic impact studies for proposed developments, and level-of-service ratings for maintenance operations. In the private sector - realtors, bankers, developers, economic development agencies, as well as citizens also use traffic count data for a variety of purposes. This information is provided via this web site as a service of Sumter County in partnership with the MPO.

The "SUMTER COUNTY ANNUAL TRAFFIC REPORT – 2012 TRAFFIC REPORT" provides the latest traffic count information. The counts were obtained using pneumatic traffic data recorders and the locations were marked using GPS units. Data collection was conducted during the months of March, April and May 2012 during the historical peak season of activity in Sumter County. Data was collected for a 24 hour period on a Tuesday, Wednesday or Thursday for each count station. Additional counts were collected at a few select stations on a Monday to capture the special event traffic generated by the Webster Flea Market. The raw counts were then adjusted using a formula that takes into consideration weekday and time of year variations.

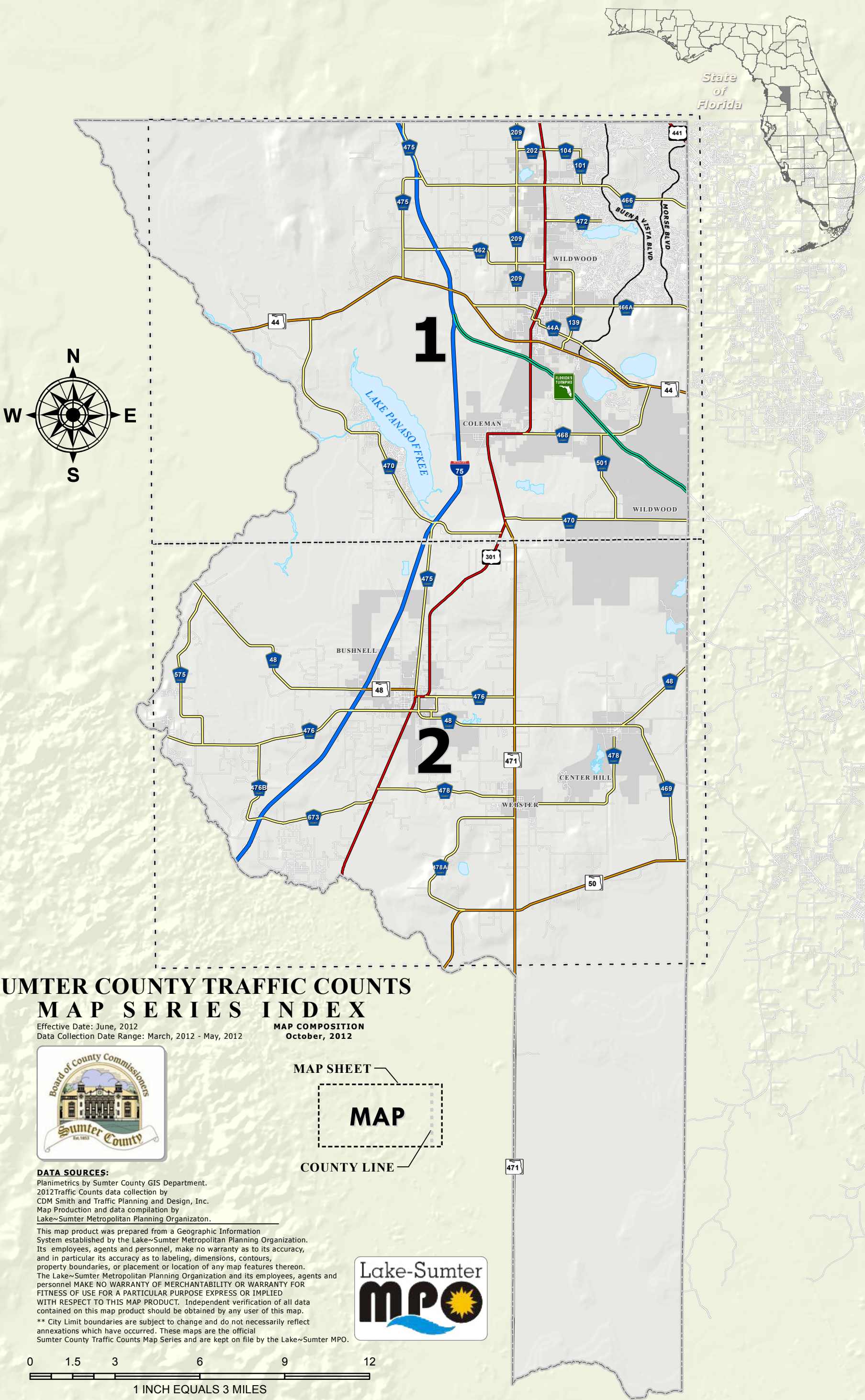
The report contains a series of maps and a table. The following information is intended to explain the headings in the table as well as key definitions and information associated with the Annual Traffic Count Program:

1	2	3	4	5					6					7	8	9	10							
Sta ID	Street	Location Description	Start Date	ADT					A.M. Peak Hour					P.M. Peak Hour					# of Lanes	Posted Speed	Golf Cart			
				2008	2009	2010	2011	2012	Time	Total	NB/EB	SB/WB	'K'	'D'	Time	Total	NB/EB	SB/WB	'K'	'D'			2011	2012

1. Sta ID – This is the unique station number assigned to each count station for consistent tracking.
2. Street – Name of the street/road where the count was taken.
3. Location Description – Location that the count was obtained described by distance from the nearest major cross street. The location is also marked by a GPS point location.
4. Start Date – The data the volume count was started.
5. ADT – The "Average Daily Trips" is a measure of the traffic volume observed during the 2012 count period. The historical (2008- 2011) ADT is also provided for reference. An ADT of 0 signifies that a count was not obtained in that year.
6. A.M. Peak Hour – The traffic information observed for the highest one hour period during the morning.
 - Time – The start time of the A.M. peak hour (e.g. 9:15 means the peak hour is 9:15 to 10:15)
 - Total – Total traffic observed during the A.M. peak hour
 - NB/EB – The traffic volume observed in the NB or EB (depending on road orientation) during the A.M. peak hour
 - SB/WB – The traffic volume observed in the SB or WB (depending on road orientation) during the A.M. peak hour
 - K – This factor reflects the ratio of total A.M. peak hour traffic to the total daily traffic (*if peak hour volume is 100 vehicles and ADT is 1,000, then $K = \text{peak}/\text{daily} = 100/1,000 = 0.1$*)
 - D – This factor reflects the ratio of peak direction peak hour traffic to the total A.M. peak hour traffic (*if volume in EB direction 550 vehicles and WB direction is 450 vehicles, then total A.M. peak hour volume is 1,000 vehicles and $D = \text{peak direction}/\text{total peak} = 550/1,000 = 0.55$*)
7. P.M. Peak Hour – The traffic information for the highest one hour period during the evening peak.
 - Time – The start time of the P.M. peak hour (e.g. 4:30 means the peak hour is 4:30 to 5:30)
 - Total – Total traffic observed during the P.M. peak hour
 - NB/EB – The traffic volume observed in the NB or EB (depending on road orientation) during the P.M. peak hour
 - SB/WB – The traffic volume observed in the SB or WB (depending on road orientation) during the P.M. peak hour
 - K – This factor reflects the ratio of total P.M. peak hour traffic to the total daily traffic (if peak hour volume is 100 vehicles and ADT is 1,000, then $K = \text{peak}/\text{daily} = 100/1,000 = 0.1$)
 - D – This factor reflects the ratio of peak direction peak hour traffic to the total P.M. peak hour traffic
 - (If volume in EB direction 550 vehicles and WB direction is 450 vehicles, then total P.M. peak hour volume is 1,000 vehicles and $D = \text{peak direction}/\text{total peak} = 550/1,000 = 0.55$)
8. # of Lanes – The number of travel lanes on the roadway at the time that the count was taken.
9. Posted Speed – The posted speed limit on the road at the location where the count was taken.
10. Golf Cart – Bi-directional golf car traffic observed on dedicated golf cart paths or golf cart lanes at the location where the count was taken. The count observed in 2010 is also provided.

2 0 1 2 S U M T E R C O U N T Y A N N U A L T R A F F I C C O U N T S

M I P O T R A F F I C C O U N T S P R O G R A M



SUMTER COUNTY TRAFFIC COUNTS MAP SERIES INDEX

Effective Date: June, 2012
Data Collection Date Range: March, 2012 - May, 2012

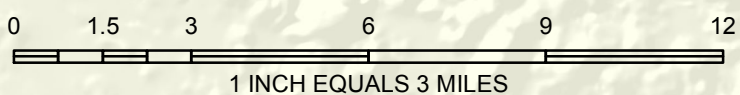
MAP COMPOSITION
October, 2012

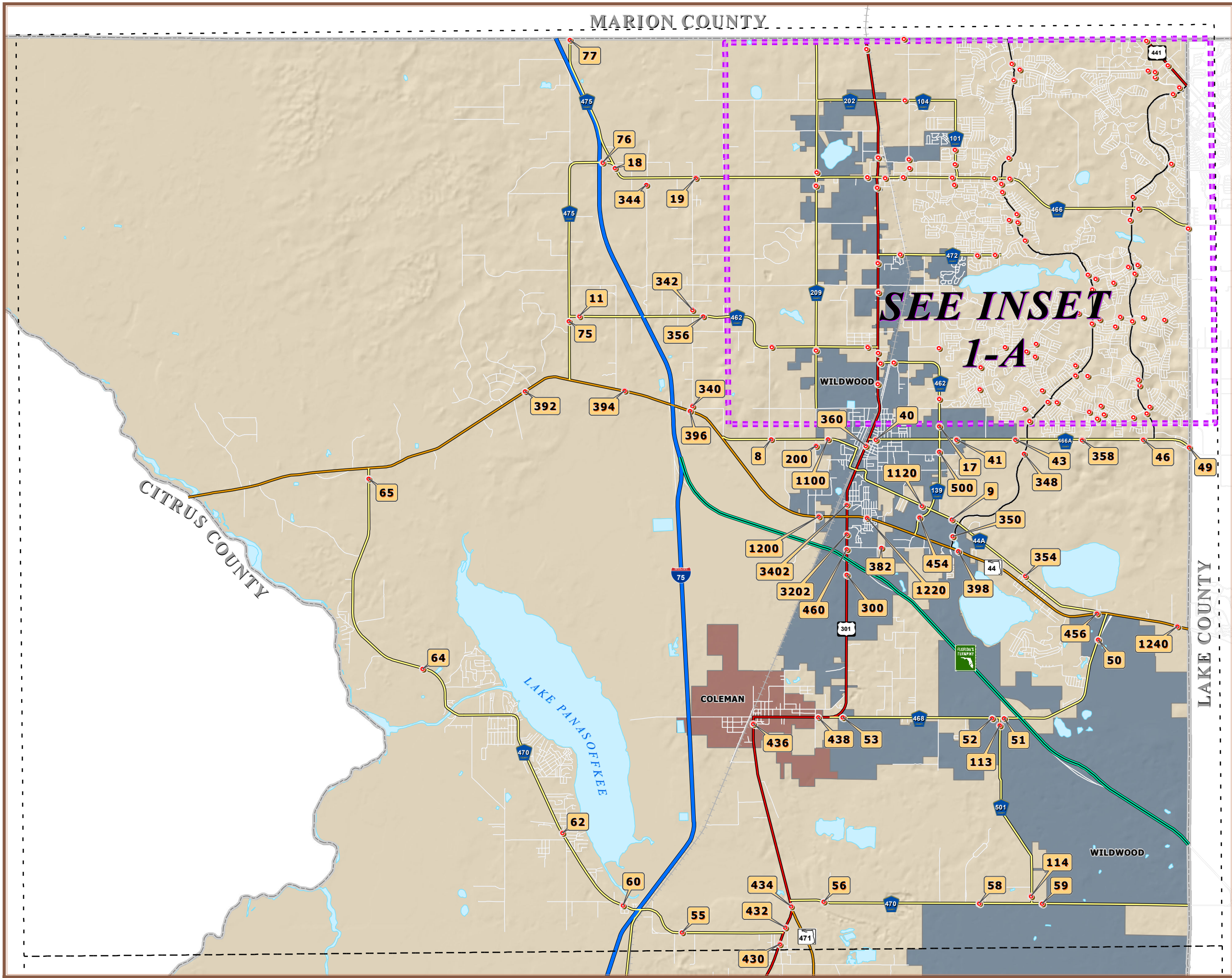


DATA SOURCES:
Planimetrics by Sumter County GIS Department.
2012 Traffic Counts data collection by
CDM Smith and Traffic Planning and Design, Inc.
Map Production and data compilation by
Lake~Sumter Metropolitan Planning Organization.

This map product was prepared from a Geographic Information System established by the Lake~Sumter Metropolitan Planning Organization. Its employees, agents and personnel, make no warranty as to its accuracy, and in particular its accuracy as to labeling, dimensions, contours, property boundaries, or placement or location of any map features thereon. The Lake~Sumter Metropolitan Planning Organization and its employees, agents and personnel MAKE NO WARRANTY OF MERCHANTABILITY OR WARRANTY FOR FITNESS OF USE FOR A PARTICULAR PURPOSE EXPRESS OR IMPLIED WITH RESPECT TO THIS MAP PRODUCT. Independent verification of all data contained on this map product should be obtained by any user of this map.

** City Limit boundaries are subject to change and do not necessarily reflect annexations which have occurred. These maps are the official Sumter County Traffic Counts Map Series and are kept on file by the Lake~Sumter MPO.





1 Inch equals 1.5 Miles

2012 SUMTER COUNTY ANNUAL TRAFFIC COUNTS MAP SERIES



LEGEND Station ID

- Traffic Count Station Location
- County Road
- State Road
- US Highway
- Interstate
- Turnpike
- Active Railroad
- Water Body
- County Delineation

Incorporated Area

- Bushnell
- Center Hill
- Coleman
- Webster
- Wildwood

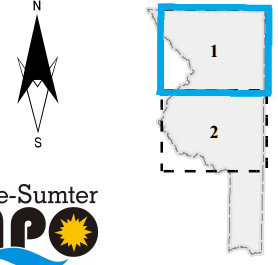
****** City Limit boundaries are subject to change and do not necessarily reflect annexations which have occurred. These maps are the official Sumter County Traffic Counts Map Series and are kept on file for viewing in Sumter County Public Works.

DATA SOURCES:
Sumter County GIS Department; Planimetrics
Data Compilation and Map production
compliments of the
Lake-Sumter Metropolitan Planning Organization.

This map product was prepared from a Geographic Information System established by the Lake-Sumter Metropolitan Planning Organization. Its employees, agents and personnel, make no warranty as to its accuracy, and in particular its accuracy as to labeling, dimensions, contours, property boundaries, or placement or location of any map features thereon. The Lake-Sumter Metropolitan Planning Organization and its employees, agents and personnel MAKE NO WARRANTY OF MERCHANTABILITY OR WARRANTY FOR FITNESS OF USE FOR A PARTICULAR PURPOSE EXPRESS OR IMPLIED WITH RESPECT TO THIS MAP PRODUCT. Independent verification of all data contained on this map product should be obtained by any user of this map.



MAP SERIES INDEX



MAP SHEET
1



2012 SUMTER COUNTY ANNUAL TRAFFIC COUNTS MAP SERIES



LEGEND Station ID

- Traffic Count Station Location
- County Road
- State Road
- US Highway
- Interstate
- Turnpike
- Active Railroad
- Water Body
- County Delineation



MAP SHEET COUNTY LINE

Incorporated Area

- Bushnell
- Center Hill
- Coleman
- Webster
- Wildwood

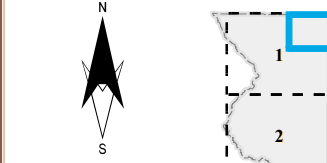
** City Limit boundaries are subject to change and do not necessarily reflect annexations which have occurred. These maps are the official Sumter County Traffic Counts Map Series and are kept on file for viewing in Sumter County Public Works.

DATA SOURCES:
Sumter County GIS Department; Planimetrics Data Compilation and Map production compliments of the Lake-Summer Metropolitan Planning Organization.

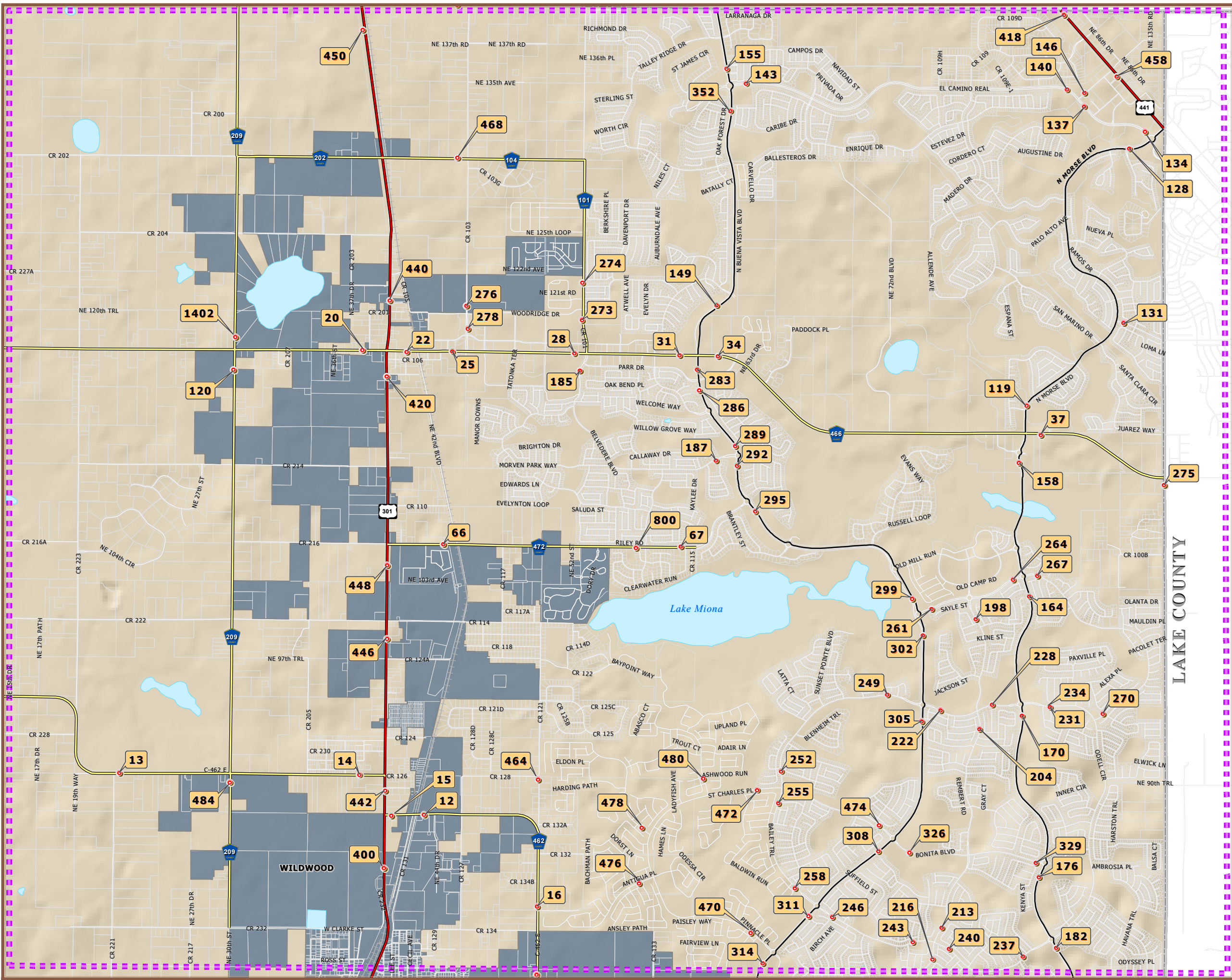
This map product was prepared from a Geographic Information System established by the Lake-Summer Metropolitan Planning Organization. Its employees, agents and personnel, make no warranty as to its accuracy, and in particular its accuracy as to labeling, dimensions, contours, property boundaries, or placement or location of any map features thereon. The Lake-Summer Metropolitan Planning Organization and its employees, agents and personnel MAKE NO WARRANTY OF MERCHANTABILITY OR WARRANTY FOR FITNESS OF USE FOR A PARTICULAR PURPOSE EXPRESS OR IMPLIED WITH RESPECT TO THIS MAP PRODUCT. Independent verification of all data contained on this map product should be obtained by any user of this map.



MAP SERIES INDEX



MAP INSET
1-A



1 Inch equals 0.6 Miles

2012 SUMTER COUNTY ANNUAL TRAFFIC COUNTS MAP SERIES



LEGEND Station ID

- Traffic Count Station Location
- County Road
- State Road
- US Highway
- Interstate
- Turnpike
- Active Railroad
- Water Body
- County Delineation



MAP SHEET COUNTY LINE

Incorporated Area

- Bushnell
- Center Hill
- Coleman
- Webster
- Wildwood

** City Limit boundaries are subject to change and do not necessarily reflect annexations which have occurred. These maps are the official Sumter County Traffic Counts Map Series and are kept on file for viewing in Sumter County Public Works.

DATA SOURCES:
Sumter County GIS Department; Planimetrics
Data Compilation and Map production
compliments of the
Lake-Sumter Metropolitan Planning Organization.

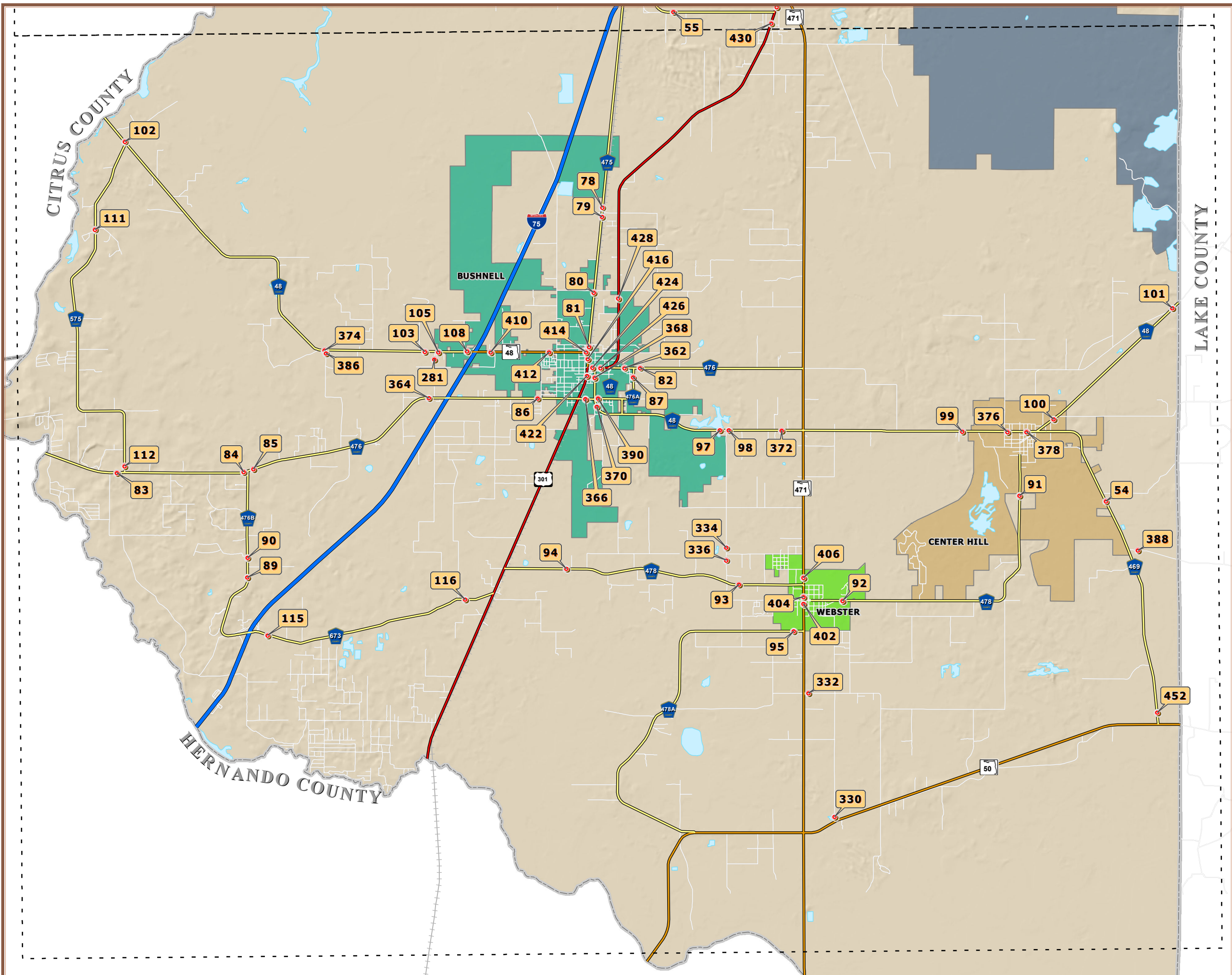
This map product was prepared from a Geographic Information System established by the Lake-Sumter Metropolitan Planning Organization. Its employees, agents and personnel, make no warranty as to its accuracy, and in particular its accuracy as to labeling, dimensions, contours, property boundaries, or placement or location of any map features thereon. The Lake-Sumter Metropolitan Planning Organization and its employees, agents and personnel MAKE NO WARRANTY OF MERCHANTABILITY OR WARRANTY FOR FITNESS OF USE FOR A PARTICULAR PURPOSE EXPRESS OR IMPLIED WITH RESPECT TO THIS MAP PRODUCT. Independent verification of all data contained on this map product should be obtained by any user of this map.



MAP SERIES INDEX



MAP SHEET
2



1 Inch equals 1.5 Miles

**Sumter County Annual Traffic Counts
2012 Volumes Summary**

Sta ID	Street	Location Description	Start Date	ADT					A.M. Peak Hour					P.M. Peak Hour					# of Lanes	Posted Speed	Golf Cart			
				2008	2009	2010	2011	2012	Time	Total	NB/EB	SB/WB	'K'	'D'	Time	Total	NB/EB	SB/WB			'K'	'D'	2011	2012
8	C-44A	150' E of CR 221(W of US 301)	03/07/12	1,110	911	980	1,046	995	9:00 AM	60	31	29	6.0%	51.7%	3:30 PM	95	46	49	9.5%	51.6%	2	35	--	--
9	C-44A	500' W of Buena Vista Blvd	03/27/12	1,806	2,806	1,851	1,313	1,428	8:45 AM	106	52	54	7.4%	50.9%	3:45 PM	136	70	66	9.5%	51.5%	4	35	--	--
11	C-462W	400' E of C-475N	04/04/12	608	614	418	515	692	7:15 AM	76	49	27	11.0%	64.5%	4:15 PM	69	21	48	10.0%	69.6%	2	45	--	--
12	C-462E	275' E of CR 131	03/27/12	4,656	4,919	5,233	6,005	6,718	6:30 AM	672	438	234	10.0%	65.2%	4:45 PM	575	153	422	8.6%	73.4%	2	35	--	--
13	C-462E	20' E of CR 221	03/07/12	1,878	2,313	2,150	2,261	2,196	6:00 AM	178	129	49	8.1%	72.5%	4:45 PM	266	98	168	12.1%	63.2%	2	45	--	--
14	C-462E	500' W of US 301	03/07/12	2,923	2,627	2,563	2,326	2,456	6:15 AM	173	128	45	7.0%	74.0%	5:00 PM	264	103	161	10.7%	61.0%	2	55	--	--
15	C-462E	200' E of US 301	03/07/12	0	0	5,104	5,104	5,965	6:30 AM	507	351	156	8.5%	69.2%	4:15 PM	546	182	364	9.2%	66.7%	2	45	--	--
16	C-462E	200' N of NE 81 st. Blvd	03/07/12	4,405	4,660	4,544	6,655	7,379	7:30 AM	745	306	439	10.1%	58.9%	3:45 PM	629	403	226	8.5%	64.1%	2	45	--	--
17	C-462E	500' N of C-466A	04/10/12	4,414	4,110	4,143	5,514	7,706	7:30 AM	687	282	405	8.9%	59.0%	4:45 PM	675	419	256	8.8%	62.1%	2	45	--	--
18	C-466W	300' S of C-475N	03/06/12	4,720	4,350	2,158	4,457	4,488	7:00 AM	325	85	240	7.2%	73.8%	4:30 PM	425	281	144	9.5%	66.1%	2	45	--	--
19	C-466E	250' E of CR 229	03/06/12	5,074	5,126	2,529	4,854	4,922	6:45 AM	364	263	101	7.4%	72.3%	4:15 PM	458	173	285	9.3%	62.2%	2	55	--	--
20	C-466E	450' W of US 301	03/06/12	5,816	6,102	2,968	6,374	6,253	6:45 AM	493	368	125	7.9%	74.6%	4:30 PM	610	217	393	9.8%	64.4%	2	35	--	--
22	C-466E	300' W of R/R	03/06/12	0	18,269	9,027	20,725	22,379	7:00 AM	1,721	1,103	618	7.7%	64.1%	3:00 PM	1,876	894	982	8.4%	52.3%	5	45	--	--
25	C-466E	300' W of CR 103	03/06/12	18,272	16,317	7,950	18,330	19,385	7:00 AM	1,534	953	581	7.9%	62.1%	3:00 PM	1,632	727	905	8.4%	55.5%	5	45	--	--
28	C-466E	200' W of CR 101	03/06/12	20,144	20,218	10,244	23,112	24,236	7:00 AM	1,716	941	775	7.1%	54.8%	3:00 PM	2,138	1,058	1,080	8.8%	50.5%	5	45	--	--
31	C-466E	400' W of Buena Vista Blvd	03/07/12	25,391	26,223	12,783	28,100	29,813	9:00 AM	1,928	1,081	847	6.5%	56.1%	3:00 PM	2,500	1,262	1,238	8.4%	50.5%	4	45	--	--
34	C-466E	500' E. of Buena Vista Blvd	03/07/12	23,087	21,404	10,773	22,727	23,914	9:00 AM	1,504	749	755	6.3%	50.2%	3:00 PM	2,051	966	1,085	8.6%	52.9%	4	45	--	--
37	C-466E	500' E of Morse Blvd	04/04/12	21,393	20,053	10,433	24,085	25,790	7:00 AM	1,658	829	829	6.4%	50.0%	3:15 PM	2,154	1,077	1,077	8.4%	50.0%	4	45	--	--
40	C-466A (Cleveland)	150' E of US 301	04/03/12	0	0	3,330	7,870	6,379	7:30 AM	444	239	205	7.0%	53.8%	3:30 PM	487	238	249	7.6%	51.1%	2	30	--	--
41	C-466A	500' E of CR 139	04/03/12	7,891	7,858	4,277	9,695	7,006	7:15 AM	520	272	248	7.4%	52.3%	3:00 PM	553	270	283	7.9%	51.2%	5	45	--	--
43	C-466A	500' W of Buena Vista Blvd	04/11/12	8,460	7,572	4,802	10,244	13,638	7:30 AM	1,027	528	499	7.5%	51.4%	3:00 PM	1,143	532	611	8.4%	53.5%	4	45	--	--
46	C-466A	300' W of Morse Blvd	03/20/12	7,403	7,454	4,475	11,433	13,107	8:00 AM	897	447	450	6.8%	50.2%	3:45 PM	1,054	528	526	8.0%	50.1%	4	45	--	--
49	C-466A	50' W of Lake County Line	04/03/12	9,737	9,331	5,445	12,307	13,318	8:00 AM	974	413	561	7.3%	57.6%	3:30 PM	1,151	595	556	8.6%	51.7%	2	45	--	--
50	C-468	1400' South of SR 44E	04/03/12	0	0	3,623	3,755	3,841	7:00 AM	291	179	112	7.6%	61.5%	4:30 PM	298	119	179	7.8%	60.1%	2	45	--	--
51	C-468	500' E of CR 501	04/11/12	3,321	2,931	2,728	2,789	2,638	6:45 AM	210	124	86	8.0%	59.0%	3:45 PM	229	126	103	8.7%	55.0%	2	55	--	--
52	C-468	500' W of CR 501	03/22/12	2,997	2,511	2,220	2,369	2,117	7:00 AM	192	146	46	9.1%	76.0%	3:30 PM	217	74	143	10.3%	65.9%	2	55	--	--
53	C-468	400' E of US 301	04/03/12	2,927	2,919	2,833	3,039	3,063	7:00 AM	270	159	111	8.8%	58.9%	3:15 PM	269	105	164	8.8%	61.0%	2	45	--	--
54	C-469	2640' South of CR 716	04/03/12	2,497	2,063	2,068	1,981	1,747	6:45 AM	132	65	67	7.6%	50.8%	4:00 PM	160	83	77	9.2%	51.9%	2	55	--	--
55	C-470E	300' E of CR 529	04/04/12	8,233	5,945	7,326	7,117	6,990	7:15 AM	560	378	182	8.0%	67.5%	3:45 PM	552	202	350	7.9%	63.4%	2	55	--	--
56	C-470E	500' W of Dixie Lime	03/06/12	6,808	6,553	6,017	6,552	5,870	7:00 AM	488	330	158	8.3%	67.6%	3:30 PM	563	220	343	9.6%	60.9%	2	55	--	--
58	C-470E	300' W of CR 500	03/21/12	7,366	5,762	6,208	6,422	6,157	7:15 AM	492	239	253	8.0%	51.4%	3:30 PM	511	268	243	8.3%	52.4%	2	55	--	--
59	C-470E	300' E of CR 501	03/21/12	7,180	5,069	5,554	5,642	5,742	7:15 AM	470	221	249	8.2%	53.0%	3:15 PM	472	259	213	8.2%	54.9%	2	55	--	--
60	C-470N	200' N/W of CR 491	03/21/12	8,484	8,129	7,876	8,092	7,808	7:15 AM	634	223	411	8.1%	64.8%	3:45 PM	691	437	254	8.8%	63.2%	2	35	--	--
62	C-470N	300' N CR 479	04/10/12	7,422	7,366	6,883	6,903	6,426	7:15 AM	439	131	308	6.8%	70.2%	3:30 PM	591	346	245	9.2%	58.5%	2	45	--	--
64	C-470N	1320' South of CR 400	03/21/12	5,110	5,467	3,135	3,547	2,665	6:45 AM	176	70	106	6.6%	60.2%	4:00 PM	263	152	111	9.9%	57.8%	2	45	--	--
65	C-470N	300' South of SR 44W	04/10/12	3,680	3,607	2,279	2,458	2,418	6:45 AM	182	90	92	7.5%	50.5%	3:15 PM	219	96	123	9.1%	56.2%	2	55	--	--
66	C-472	325' W of RR Tracks	04/10/12	3,297	2,887	2,624	3,755	3,139	7:15 AM	247	138	109	7.9%	55.9%	3:30 PM	264	142	122	8.4%	53.8%	2	35	--	--

**Sumter County Annual Traffic Counts
2012 Volumes Summary**

Sta ID	Street	Location Description	Start Date	ADT					A.M. Peak Hour					P.M. Peak Hour					# of Lanes	Posted Speed	Golf Cart			
				2008	2009	2010	2011	2012	Time	Total	NB/EB	SB/WB	'K'	'D'	Time	Total	NB/EB	SB/WB			'K'	'D'	2011	2012
67	C-472	500' W of CR 115	04/19/12	4,146	4,076	4,261	4,619	4,587	7:45 AM	374	241	133	8.2%	64.4%	3:15 PM	414	220	194	9.0%	53.1%	2	35	--	--
75	C-475N	700' South of C-462W	03/06/12	2,450	2,137	2,280	2,771	2,931	6:45 AM	252	155	97	8.6%	61.5%	3:45 PM	279	111	168	9.5%	60.2%	2	55	--	--
76	C-475N	1500' W of C-466W	03/27/12	2,595	2,461	2,577	2,801	2,730	6:30 AM	256	159	97	9.4%	62.1%	3:00 PM	274	126	148	10.0%	54.0%	2	50	--	--
77	C-475N	1320' South of Marion Co	04/11/12	4,417	4,302	4,135	4,255	6,962	7:00 AM	530	265	265	7.6%	50.0%	4:45 PM	686	343	343	9.9%	50.0%	2	55	--	--
78	C-475S	200' N of CR 532W	03/07/12	3,959	3,818	3,915	3,611	3,846	7:45 AM	285	123	162	7.4%	56.8%	4:15 PM	342	189	153	8.9%	55.3%	2	55	--	--
79	C-475S	2500' South of CR 532W	03/28/12	4,627	4,548	4,579	4,199	4,210	7:30 AM	337	173	164	8.0%	51.3%	4:00 PM	370	193	177	8.8%	52.2%	2	55	--	--
80	C-475S	100' South of CR 542	03/07/12	5,027	4,802	5,142	5,030	5,135	8:00 AM	390	160	230	7.6%	59.0%	3:30 PM	448	238	210	8.7%	53.1%	4	45	--	--
81	C-475S	500' N of SR 48W	03/07/12	10,592	10,675	9,527	9,062	9,310	8:30 AM	785	441	344	8.4%	56.2%	3:30 PM	885	349	536	9.5%	60.6%	5	35	--	--
82	C-476E	500' E of C-476A	03/28/12	1,747	1,512	1,841	1,734	1,906	6:45 AM	158	73	85	8.3%	53.8%	3:30 PM	170	99	71	8.9%	58.2%	2	45	--	--
83	C-476W	500' W of C-575	03/07/12	3,296	3,224	3,033	3,034	3,028	7:30 AM	227	138	89	7.5%	60.8%	3:30 PM	281	112	169	9.3%	60.1%	2	55	--	--
84	C-476W	100' W of C-476B	03/07/12	3,078	3,496	3,723	3,381	3,848	7:15 AM	282	185	97	7.3%	65.6%	3:45 PM	432	163	269	11.2%	62.3%	2	45	--	--
85	C-476W	100' E of C-476B	03/07/12	3,929	3,324	3,677	3,312	3,683	7:00 AM	270	173	97	7.3%	64.1%	3:45 PM	426	204	222	11.6%	52.1%	2	45	--	--
86	C-476W	500' W of CR 603	03/06/12	4,288	4,306	4,386	4,272	4,219	7:15 AM	352	237	115	8.3%	67.3%	4:30 PM	408	163	245	9.7%	60.0%	2	45	--	--
87	C-476A	2000' South of C-476E	03/28/12	498	506	517	504	542	7:00 AM	35	21	14	6.5%	60.0%	4:30 PM	57	22	35	10.5%	61.4%	2	35	--	--
89	C-476B	1000' South of SC.L.	04/03/12	1,934	1,814	1,661	1,576	1,580	7:15 AM	155	68	87	9.8%	56.1%	3:45 PM	172	93	79	10.9%	54.1%	2	45	--	--
90	C-476B	1500' N of SC.L.	04/10/12	2,167	1,988	1,926	1,721	1,679	7:15 AM	167	60	107	9.9%	64.1%	3:45 PM	171	121	50	10.2%	70.8%	2	45	--	--
91	C-478E	1 Mile South of C-48E	03/06/12	972	1,003	918	869	1,098	7:00 AM	83	53	30	7.6%	63.9%	5:00 PM	116	47	69	10.6%	59.5%	2	55	--	--
92	C-478E	200' E of Ball Park	03/06/12	1,573	1,475	1,545	1,793	1,779	7:15 AM	143	60	83	8.0%	58.0%	5:15 PM	173	75	98	9.7%	56.6%	2	35	--	--
93	C-478E	1 Mile W of SR 471	03/06/12	2,029	1,806	2,804	1,744	1,661	7:00 AM	129	82	47	7.8%	63.6%	4:15 PM	163	71	92	9.8%	56.4%	2	55	--	--
94	C-478W	1 Mile E of US 301	03/27/12	2,068	1,756	3,640	2,056	1,989	7:00 AM	151	79	72	7.6%	52.3%	4:45 PM	181	95	86	9.1%	52.5%	2	55	--	--
95	C-478A	500' W of SR 471	03/27/12	637	717	601	612	625	7:00 AM	48	37	11	7.7%	77.1%	4:45 PM	64	31	33	10.2%	51.6%	2	55	--	--
97	C-48E	500' W of CR 747	03/06/12	4,943	5,426	5,838	5,579	5,912	7:15 AM	427	187	240	7.2%	56.2%	4:30 PM	549	260	289	9.3%	52.6%	2	55	--	--
98	C-48E	300' E of CR 747	03/06/12	4,572	4,808	4,735	4,575	4,900	7:15 AM	355	149	206	7.2%	58.0%	4:30 PM	455	211	244	9.3%	53.6%	3	55	--	--
99	C-48E	300' W of Old RR Tracks	04/10/12	4,605	4,532	4,932	4,291	4,241	7:15 AM	356	175	181	8.4%	50.8%	5:00 PM	359	177	182	8.5%	50.7%	2	55	--	--
100	C-48E	500' W of CR 702	04/04/12	3,152	2,785	3,407	2,437	2,698	7:15 AM	211	137	74	7.8%	64.9%	4:45 PM	275	108	167	10.2%	60.7%	2	35	--	--
101	C-48E	50' NE of CR 558	03/06/12	2,854	2,497	2,749	1,301	2,268	7:15 AM	177	133	44	7.8%	75.1%	4:30 PM	193	78	115	8.5%	59.6%	2	55	--	--
102	C-48W	100' W of C-575	04/03/12	3,846	3,807	3,679	3,277	3,863	8:15 AM	282	169	113	7.3%	59.9%	4:30 PM	296	124	172	7.7%	58.1%	2	45	--	--
103	C-48W	400' W of CR 616	03/06/12	4,730	4,613	5,062	4,754	5,306	7:30 AM	357	240	117	6.7%	67.2%	4:30 PM	451	170	281	8.5%	62.3%	2	45	--	--
105	C-48W	250' E of CR 616	03/06/12	9,525	8,464	7,896	7,004	7,437	7:30 AM	485	335	150	6.5%	69.1%	5:00 PM	651	308	343	8.8%	52.7%	5	45	--	--
108	C-48W	150' E of CR 313	03/06/12	10,077	9,207	10,146	8,174	8,740	7:15 AM	506	331	175	5.8%	65.4%	4:45 PM	737	317	420	8.4%	57.0%	5	45	--	--
111	C-575	1.5 Miles South of C-48W	03/07/12	803	758	675	643	651	7:15 AM	48	22	26	7.4%	54.2%	4:00 PM	58	34	24	8.9%	58.6%	2	55	--	--
112	C-575	300' N of C-476W	03/07/12	1,130	806	823	793	848	7:15 AM	63	21	42	7.4%	66.7%	4:00 PM	77	49	28	9.1%	63.6%	2	55	--	--
113	C-501	780' South of C-468	03/06/12	2,406	2,001	2,221	2,390	2,295	7:15 AM	244	97	147	10.6%	60.2%	3:30 PM	277	175	102	12.1%	63.2%	2	55	--	--
114	C-501	200' N of CR 500	03/06/12	2,247	2,045	2,238	1,916	2,238	7:15 AM	245	90	155	10.9%	63.3%	3:30 PM	269	167	102	12.0%	62.1%	2	45	--	--
115	C-673	400' E of I-75	03/06/12	2,443	1,770	1,847	1,693	1,557	7:00 AM	108	34	74	6.9%	68.5%	3:45 PM	145	92	53	9.3%	63.4%	2	45	--	--
116	C-673	1000' E of CR 674	04/04/12	1,325	1,303	1,604	1,301	1,564	7:15 AM	118	64	54	7.5%	54.2%	3:30 PM	122	55	67	7.8%	54.9%	2	40	--	--
119	N Morse Blvd	150' N of C-466E Gate	03/29/12	14,733	18,584	9,319	19,621	18,077	9:00 AM	1,310	637	673	7.2%	51.4%	3:00 PM	1,748	791	957	9.7%	54.7%	2	35	4,043	3,450

**Sumter County Annual Traffic Counts
2012 Volumes Summary**

Sta ID	Street	Location Description	Start Date	ADT					A.M. Peak Hour					P.M. Peak Hour					# of Lanes	Posted Speed	Golf Cart			
				2008	2009	2010	2011	2012	Time	Total	NB/EB	SB/WB	'K'	'D'	Time	Total	NB/EB	SB/WB			'K'	'D'	2011	2012
128	N Morse Blvd	300' S of Morse Crl	05/15/12	10,872	17,960	5,553	11,205	9,198	9:00 AM	766	438	328	8.3%	57.2%	3:00 PM	802	362	440	8.7%	54.9%	4	35	501	689
131	Rio Grande Ave	200' E of Morse Blvd	05/14/12	8,864	9,783	4,161	8,211	6,008	8:30 AM	427	266	161	7.1%	62.3%	3:00 PM	607	276	331	10.1%	54.5%	2	25	571	1,257
134	El Camino Real	200' W of Morse Crl	03/27/12	14,780	12,481	6,149	14,206	13,268	8:45 AM	1,056	552	504	8.0%	52.3%	3:00 PM	1,006	508	498	7.6%	50.5%	2	20	--	--
137	El Camino Real	200' E of Buenos Aires Blvd	03/27/12	18,290	16,211	6,202	12,299	12,864	9:00 AM	1,057	578	479	8.2%	54.7%	3:45 PM	979	436	543	7.6%	55.5%	4	35	--	--
140	El Camino Real	200' W of Buenos Aires Blvd	03/27/12	0	0	4,469	15,801	18,533	9:00 AM	1,456	834	622	7.9%	57.3%	3:00 PM	1,502	674	828	8.1%	55.1%	4	35	--	--
143	El Camino Real	300' E of Buena Vista Crl	03/27/12	0	0	8,168	17,097	16,801	9:00 AM	1,304	699	605	7.8%	53.6%	3:00 PM	1,310	631	679	7.8%	51.8%	4	35	--	--
146	Buenos Aires	200' N of El Camino Real	03/27/12	0	0	5,309	10,906	11,585	9:00 AM	925	496	429	8.0%	53.6%	3:00 PM	1,021	432	589	8.8%	57.7%	4	30	--	--
149	N Buena Vista	400' N of C-466E	03/07/12	17,358	16,689	8,315	17,433	17,570	9:00 AM	1,310	602	708	7.5%	54.0%	3:00 PM	1,383	713	670	7.9%	51.6%	4	35	--	--
155	N Buena Vista	300' N of Circle	03/07/12	0	0	8,072	16,667	16,146	9:00 AM	1,213	528	685	7.5%	56.5%	3:00 PM	1,217	692	525	7.5%	56.9%	4	35	--	--
158	S Morse Blvd	200' S of Mariposa Way	03/27/12	22,169	21,808	18,995	20,989	26,188	9:00 AM	1,822	1,065	757	7.0%	58.5%	3:00 PM	2,097	1,007	1,090	8.0%	52.0%	4	35	--	--
164	S Morse Blvd	200' S of Stillwater Trail	03/27/12	9,083	11,294	5,789	12,120	13,232	9:00 AM	948	580	368	7.2%	61.2%	3:15 PM	1,083	533	550	8.2%	50.8%	4	35	--	--
170	S Morse Blvd	200' S of N Odell Circle	03/27/12	0	11,348	3,393	7,232	8,199	9:00 AM	578	322	256	7.0%	55.7%	3:15 PM	670	348	322	8.2%	51.9%	4	35	--	--
176	S Morse Blvd	200' S of Bonita Blvd	03/20/12	0	0	3,670	7,622	8,688	9:00 AM	590	292	298	6.8%	50.5%	3:30 PM	738	388	350	8.5%	52.6%	4	35	--	--
182	S Morse Blvd	200' S of S Odell Circle	03/20/12	0	0	6,183	12,830	13,918	9:00 AM	987	404	583	7.1%	59.1%	3:00 PM	1,201	677	524	8.6%	56.4%	4	35	--	--
185	Belvedere Blvd	200' S of C-466E	03/27/12	8,170	9,044	5,571	12,447	9,253	8:45 AM	633	363	270	6.8%	57.3%	3:00 PM	1,203	530	673	13.0%	55.9%	2	30	3,838	4,174
187	Belvedere Blvd	200' W. of Buena Vista Blvd	03/27/12	3,764	8,698	4,484	8,473	5,898	8:45 AM	395	220	175	6.7%	55.7%	4:15 PM	896	440	456	15.2%	50.9%	2	30	3,527	3,980
198	Canal St	200' S of Stillwater Trl	03/28/12	0	5,648	3,124	6,183	4,740	9:00 AM	330	208	122	7.0%	63.0%	3:00 PM	600	317	283	12.7%	52.8%	2	35	2,201	2,813
204	Canal St	200' S of N Odell Circle	04/04/12	0	0	3,786	8,706	5,375	8:30 AM	360	240	120	6.7%	66.7%	3:00 PM	698	311	387	13.0%	55.4%	2	30	3,414	3,694
213	Canal St	200' N of S Odell Circle	03/20/12	0	0	2,695	5,131	3,439	8:45 AM	264	133	131	7.7%	50.4%	4:00 PM	532	314	218	15.5%	59.0%	2	20	1,658	2,362
216	Canal St	200' S of S Odell Circle	03/20/12	0	0	1,885	3,030	2,318	9:00 AM	127	11	116	5.5%	91.3%	5:45 PM	259	103	156	11.2%	60.2%	2	25	738	1,248
222	Odell Circle	200' E of Buena Vista Blvd N End	03/20/12	3,458	5,381	2,516	5,472	3,993	9:00 AM	306	159	147	7.7%	52.0%	3:00 PM	550	307	243	13.8%	55.8%	2	30	2,211	2,438
228	Odell Circle	200' W of S Morse Blvd	04/19/12	0	0	2,843	4,511	2,273	9:00 AM	172	77	95	7.6%	55.2%	4:15 PM	417	210	207	18.3%	50.4%	2	30	1,786	2,968
231	Odell Circle	200' E of S Morse Blvd gate (N end)	03/20/12	4,779	6,432	1,695	6,645	5,123	9:00 AM	329	171	158	6.4%	52.0%	3:00 PM	755	385	370	14.7%	51.0%	2	25	2,177	3,369
237	Odell Circle	200' W of S Morse Blvd gate (S end)	03/20/12	3,431	5,937	3,848	7,491	4,796	9:00 AM	360	215	145	7.5%	59.7%	3:00 PM	771	356	415	16.1%	53.8%	2	25	3,182	3,686
240	Odell Circle	200' E of Canal St	03/20/12	0	0	3,599	8,586	4,572	9:00 AM	329	171	158	7.2%	52.0%	3:00 PM	710	343	367	15.5%	51.7%	2	35	3,891	3,556
243	Odell Circle	200' W of Canal St	03/20/12	3,950	5,628	6,557	8,055	4,042	9:00 AM	310	171	139	7.7%	55.2%	3:00 PM	573	312	261	14.2%	54.5%	2	30	3,336	2,572
246	Odell Circle	200' E. of S Buena Vista Blvd	03/20/12	0	0	2,787	6,448	4,372	9:00 AM	353	141	212	8.1%	60.1%	3:45 PM	617	327	290	14.1%	53.0%	2	25	2,534	3,194
249	Bailey Trail	200' W of S Buena Vista Blvd (N end)	03/20/12	4,963	2,898	4,355	9,602	3,516	8:45 AM	296	191	105	8.4%	64.5%	3:00 PM	440	204	236	12.5%	53.6%	2	25	2,944	2,032
252	Bailey Trail	200 N of St. Charles Place	03/20/12	2,562	3,210	2,542	9,961	8,560	8:45 AM	609	362	247	7.1%	59.4%	4:15 PM	1,050	463	587	12.3%	55.9%	2	30	3,353	4,128
255	Bailey Trail	200' S of St. Charles Place	03/20/12	1,038	2,011	1,692	4,138	2,804	8:45 AM	225	113	112	8.0%	50.2%	3:00 PM	366	168	198	13.1%	54.1%	2	20	1,479	1,659
258	Bailey Trail	200' W of S Buena Vista Blvd (S End)	04/11/12	1,336	6,638	2,141	5,043	3,118	9:00 AM	256	156	100	8.2%	60.9%	3:00 PM	398	161	237	12.8%	59.5%	2	20	1,748	1,945
261	Stillwater Trail	200' E of S Buena Vista Blvd	03/28/12	6,177	6,322	3,373	10,328	9,756	9:00 AM	745	432	313	7.6%	58.0%	3:00 PM	990	427	563	10.1%	56.9%	4	35	6,563	2,739
264	Stillwater Trail	200' W of S Morse Blvd	04/04/12	6,237	6,635	3,684	9,170	9,408	9:00 AM	720	385	335	7.7%	53.5%	3:15 PM	832	364	468	8.8%	56.3%	4	20	1,057	1,139
267	Stillwater Trail	200' E. of S Morse Blvd gate	04/04/12	0	0	2,674	6,590	3,665	9:00 AM	170	43	127	4.6%	74.7%	3:00 PM	369	179	190	10.1%	51.5%	2	20	1,876	852
270	Stillwater Trail	200' E. of Odell Circle	03/29/12	0	3,487	1,880	3,756	2,601	9:00 AM	208	106	102	8.0%	51.0%	3:15 PM	387	191	196	14.9%	50.6%	2	20	1,059	1,844
273	C-101	100' S of Woodridge Dr	03/20/12	0	0	0	5,650	6,542	8:45 AM	498	180	318	7.6%	63.9%	3:00 PM	583	289	294	8.9%	50.4%	2	35	--	--
274	C-101	600' N of Woodridge Dr	04/19/12	0	0	0	2,652	2,789	7:00 AM	339	91	248	12.2%	73.2%	4:45 PM	222	143	79	8.0%	64.4%	2	35	--	--

**Sumter County Annual Traffic Counts
2012 Volumes Summary**

Sta ID	Street	Location Description	Start Date	ADT					A.M. Peak Hour					P.M. Peak Hour					# of Lanes	Posted Speed	Golf Cart			
				2008	2009	2010	2011	2012	Time	Total	NB/EB	SB/WB	'K'	'D'	Time	Total	NB/EB	SB/WB			'K'	'D'	2011	2012
275	C-100	150' S of C-466E	04/04/12	0	0	0	1,191	1,298	7:00 AM	101	65	36	7.8%	64.4%	5:00 PM	119	48	71	9.2%	59.7%	2	35	--	--
276	C-103	200' N of Woodridge Dr	04/11/12	0	0	0	1,577	2,002	7:00 AM	291	183	108	14.5%	62.9%	3:00 PM	168	83	85	8.4%	50.6%	2	35	--	--
278	C-103	200' N of Wal Mart N.B.	04/03/12	0	0	0	2,170	2,164	7:00 AM	284	76	208	13.1%	73.2%	4:15 PM	156	60	96	7.2%	61.5%	4	35	--	--
281	C-616	200' S of C-48W	04/10/12	0	0	3,381	3,163	3,102	7:15 AM	211	131	80	6.8%	62.1%	5:00 PM	292	123	169	9.4%	57.9%	2	45	--	--
283	S Buena Vista	200' S of Prof. Plaza	04/04/12	16,212	16,022	8,883	16,912	17,683	8:45 AM	1,301	724	577	7.4%	55.6%	3:00 PM	1,374	651	723	7.8%	52.6%	4	35	--	--
286	S Buena Vista	200' S of Laurel Manor Dr	03/20/12	0	16,418	9,126	18,975	18,254	9:00 AM	1,252	708	544	6.9%	56.5%	3:00 PM	1,444	703	741	7.9%	51.3%	4	35	--	--
289	S Buena Vista	200' N of Belvidere Blvd	03/20/12	0	16,418	0	19,099	18,799	8:45 AM	1,275	733	542	6.8%	57.5%	3:00 PM	1,467	704	763	7.8%	52.0%	4	20	--	--
292	S Buena Vista	200' S of Belvidere Blvd	03/20/12	0	15,627	9,119	19,153	19,001	8:45 AM	1,250	656	594	6.6%	52.5%	3:00 PM	1,494	714	780	7.9%	52.2%	4	35	--	--
295	S Buena Vista	200' S of Rainey Trl.	03/20/12	0	17,046	9,909	21,221	20,960	8:45 AM	1,436	734	702	6.9%	51.1%	3:00 PM	1,659	802	857	7.9%	51.7%	4	35	--	--
299	S Buena Vista	200' N of Stillwater Trl.	03/20/12	0	13,132	6,959	16,395	17,589	8:45 AM	1,239	638	601	7.0%	51.5%	3:00 PM	1,370	621	749	7.8%	54.7%	4	35	--	--
302	S Buena Vista	300' S of Stillwater Trl.	04/04/12	0	12,931	3,657	15,002	19,398	9:00 AM	1,469	829	640	7.6%	56.4%	3:00 PM	1,527	733	794	7.9%	52.0%	4	35	--	--
305	S Buena Vista	200' S of N Bailey Trail S End	04/04/12	5,908	6,104	3,366	9,695	9,258	9:00 AM	708	376	332	7.6%	53.1%	3:00 PM	731	343	388	7.9%	53.1%	4	35	--	--
308	S Buena Vista	1320' S of St. Charles Place	04/04/12	0	4,184	2,372	6,460	7,290	9:00 AM	578	279	299	7.9%	51.7%	3:00 PM	591	298	293	8.1%	50.4%	4	35	--	--
311	S Buena Vista	300' S of S Bailey Trail	04/04/12	0	3,064	0	5,672	7,437	9:00 AM	547	233	314	7.4%	57.4%	3:00 PM	646	317	329	8.7%	50.9%	4	35	--	--
314	S Buena Vista	300' S of Turtle Mound Path	04/19/12	0	0	2,624	7,935	10,868	8:30 AM	1,307	589	718	12.0%	54.9%	3:00 PM	367	220	147	3.4%	59.9%	4	35	--	--
326	Bonita Blvd	200' E. of Buena Vista Blvd	04/04/12	0	2,768	1,555	3,819	3,057	9:00 AM	202	93	109	6.6%	54.0%	3:00 PM	354	180	174	11.6%	50.8%	2	20	1,050	1,110
329	Bonita Blvd	200' W of Morse Blvd	04/10/12	0	3,017	1,707	3,617	3,210	8:30 AM	258	156	102	8.0%	60.5%	3:00 PM	311	137	174	9.7%	55.9%	2	20	561	608
330	C-727	300' N of SR 50	03/28/12	0	0	0	177	148	8:00 AM	9	3	6	6.1%	66.7%	3:45 PM	16	7	9	10.8%	56.3%	2	35	--	--
332	C-721	300' E of C-471	03/28/12	0	0	0	686	604	7:15 AM	61	17	44	10.1%	72.1%	4:15 PM	61	33	28	10.1%	54.1%	2	35	--	--
334	C-747	300' N of C-730	03/27/12	0	0	0	1,164	1,310	7:00 AM	159	88	71	12.1%	55.3%	3:45 PM	137	60	77	10.5%	56.2%	2	40	--	--
336	C-747	300' South of C-730	03/27/12	0	0	0	683	690	8:30 AM	85	64	21	12.3%	75.3%	3:45 PM	76	19	57	11.0%	75.0%	2	40	--	--
340	C-229	300' N of SR 44	04/10/12	0	0	0	2,138	3,010	7:00 AM	253	99	154	8.4%	60.9%	4:30 PM	289	156	133	9.6%	54.0%	2	45	--	--
342	C-229	1000' N of C-462	04/04/12	0	0	0	2,039	1,841	6:45 AM	136	58	78	7.4%	57.4%	5:15 PM	171	81	90	9.3%	52.6%	2	45	--	--
344	C-237	300' South of C-466	04/04/12	0	0	0	386	359	6:45 AM	23	10	13	6.4%	56.5%	3:30 PM	44	21	23	12.3%	52.3%	2	40	--	--
484	CR 209	300' S of CR 462	04/04/12	0	0	506	676	452	6:30 AM	25	9	16	5.5%	64.0%	5:15 PM	51	25	26	11.3%	51.0%	2	35	--	--
120	CR 209	700' S of CR 466	04/04/12	0	0	721	724	449	6:45 AM	40	17	23	8.9%	57.5%	4:45 PM	43	25	18	9.6%	58.1%	2	45	--	--
1402	CR 209	450' N of CR 466	03/27/12	0	0	642	565	454	8:30 AM	45	36	9	9.9%	80.0%	3:30 PM	51	26	25	11.2%	51.0%	2	35	--	--
200	CR 213	550' S of CR 44A	04/10/12	0	0	468	406	425	6:00 AM	23	10	13	5.4%	56.5%	4:30 PM	39	19	20	9.2%	51.3%	2	30	--	--
300	US 301	900' S of Turnpike Ramps	03/20/12	0	0	9,187	9,092	10,253	7:00 AM	767	391	376	7.5%	51.0%	3:45 PM	925	476	449	9.0%	51.5%	2	55	--	--
3202	US 301	1500' S of SR 44	04/19/12	0	0	13,561	13,249	15,080	7:15 AM	1,115	541	574	7.4%	51.5%	4:45 PM	1,227	562	665	8.1%	54.2%	4	45	--	--
3402	US 301	1000' N of SR 44	03/20/12	0	0	23,059	18,516	23,070	7:00 AM	1,550	799	751	6.7%	51.5%	3:45 PM	1,854	948	906	8.0%	51.1%	5	40	--	--
360	US 301	600' SW of CR 466A	04/04/12	0	0	21,062	16,850	21,622	7:15 AM	1,524	680	844	7.0%	55.4%	3:15 PM	1,673	883	790	7.7%	52.8%	4	35	--	--
400	US 301	3100' S of CR 462	04/04/12	0	0	14,600	13,125	18,507	7:00 AM	1,369	547	822	7.4%	60.0%	3:30 PM	1,456	757	699	7.9%	52.0%	4	40	--	--
420	US 301	875' S of CR 466	03/20/12	0	0	17,190	16,301	21,993	7:15 AM	1,648	724	924	7.5%	56.1%	3:45 PM	1,823	1,012	811	8.3%	55.5%	4	45	--	--
440	US 301	1700' N of CR 466	03/28/12	0	0	14,109	14,229	19,001	7:00 AM	1,480	494	986	7.8%	66.6%	3:00 PM	1,544	855	689	8.1%	55.4%	4	45	--	--
500	CR 139	1000' S of CR 466A	04/04/12	0	0	1,589	4,540	5,760	7:15 AM	434	197	237	7.5%	54.6%	4:45 PM	497	277	220	8.6%	55.7%	4	35	--	--
800	CR 472	350' W of Lynnhaven Ln	04/19/12	0	0	3,091	3,700	4,141	7:15 AM	362	249	113	8.7%	68.8%	3:30 PM	397	210	187	9.6%	52.9%	2	35	--	--

**Sumter County Annual Traffic Counts
2012 Volumes Summary**

Sta ID	Street	Location Description	Start Date	ADT					A.M. Peak Hour					P.M. Peak Hour					# of Lanes	Posted Speed	Golf Cart			
				2008	2009	2010	2011	2012	Time	Total	NB/EB	SB/WB	'K'	'D'	Time	Total	NB/EB	SB/WB			'K'	'D'	2011	2012
1100	CR 44A	1000' E of CR 213	04/04/12	0	0	828	1,048	1,100	7:30 AM	79	42	37	7.2%	53.2%	5:00 PM	86	44	42	7.8%	51.2%	2	35	--	--
1120	CR 44A	750' W of CR 139 (Powell Rd)	03/20/12	1,806	2,806	1,576	1,308	1,565	7:00 AM	124	64	60	7.9%	51.6%	3:00 PM	135	70	65	8.6%	51.9%	4	35	--	--
1200	SR 44	2500' W of US 301	03/20/12	0	0	14,621	13,090	17,078	7:30 AM	1,180	600	580	6.9%	50.8%	4:15 PM	1,314	614	700	7.7%	53.3%	4	45	--	--
1220	SR 44	1700' E of US 301	03/27/12	0	0	12,608	12,567	16,486	7:30 AM	1,099	576	523	6.7%	52.4%	4:30 PM	1,329	622	707	8.1%	53.2%	4	45	--	--
1240	SR 44	1000' W of Sumter Lake C.L.	04/11/12	0	0	14,482	14,101	16,828	7:15 AM	1,148	720	428	6.8%	62.7%	4:30 PM	1,355	556	799	8.1%	59.0%	4	55	--	--
348	Buena Vista Blvd	1200' S of CR 466A	04/19/12	0	0	0	0	4,726	6:30 AM	398	82	316	8.4%	79.4%	3:15 PM	409	248	161	8.7%	60.6%	4	35	--	--
350	Buena Vista Blvd	1000' N of SR 44	04/19/12	0	0	0	0	2,328	6:30 AM	211	151	60	9.1%	71.6%	3:00 PM	238	86	152	10.2%	63.9%	4	35	--	--
352	Buena Vista Blvd	850' S of El Camino Real / Glenview Rd	04/19/12	0	0	0	0	17,646	9:00 AM	1,323	667	656	7.5%	50.4%	3:45 PM	1,364	697	667	7.7%	51.1%	4	35	--	--
354	C-44A	350' NW of CR 143	03/20/12	0	0	0	0	830	9:00 AM	70	34	36	8.4%	51.4%	3:15 PM	73	32	41	8.8%	56.2%	2	25	--	--
356	C-462	925' E of CR 229	04/04/12	0	0	0	0	1,535	7:00 AM	116	71	45	7.6%	61.2%	3:00 PM	132	50	82	8.6%	62.1%	2	45	--	--
358	C-466A	475' W of Canal St	04/19/12	0	0	0	0	11,701	9:00 AM	806	426	380	6.9%	52.9%	3:30 PM	946	489	457	8.1%	51.7%	4	45	--	--
452	C-469	1000' N of SR 50	04/10/12	0	0	0	0	1,376	6:30 AM	119	49	70	8.6%	58.8%	3:45 PM	128	52	76	9.3%	59.4%	2	55	--	--
362	C-476 E (Noble Ave)	350' E of Flanner Ave	04/10/12	0	0	0	0	2,796	7:45 AM	243	75	168	8.7%	69.1%	3:30 PM	255	124	131	9.1%	51.4%	2	35	--	--
364	C-476 W	500' W of CR 616	03/28/12	0	0	0	0	3,997	7:15 AM	329	226	103	8.2%	68.7%	4:00 PM	372	147	225	9.3%	60.5%	2	45	--	--
366	C-476 (Seminole Ave)	150' E of S Roland St	03/28/12	0	0	0	0	3,730	7:45 AM	285	197	88	7.6%	69.1%	4:30 PM	348	155	193	9.3%	55.5%	2	30	--	--
368	CR 48 (Florida St)	200' S of E Virginia Ave	03/28/12	0	0	0	0	3,730	7:45 AM	285	197	88	7.6%	69.1%	4:30 PM	348	155	193	9.3%	55.5%	2	30	--	--
370	C-48	300' NW of N Justice St	03/28/12	0	0	0	0	6,443	7:15 AM	501	277	224	7.8%	55.3%	4:45 PM	548	265	283	8.5%	51.6%	2	35	--	--
372	C-48	550' E of SE 26th Dr	04/10/12	0	0	0	0	4,251	7:15 AM	325	149	176	7.6%	54.2%	4:45 PM	350	175	175	8.2%	50.0%	2	45	--	--
374	C-48	100' W of CR 625	03/27/12	0	0	0	0	10,971	9:00 AM	690	287	403	6.3%	58.4%	3:15 PM	938	422	516	8.5%	55.0%	2	45	--	--
376	C-48	250' E of North Ave / South Ave	03/27/12	0	0	0	0	1,843	7:00 AM	188	188	0	10.2%	100.0%	5:30 PM	137	137	0	7.4%	100.0%	2	35	--	--
378	C-48	100' W of Magnolia Ave	03/27/12	0	0	0	0	4,534	6:45 AM	324	158	166	7.1%	51.2%	3:30 PM	348	173	175	7.7%	50.3%	2	35	--	--
454	CR 139 (Powell Rd)	1500' N of SR 44	04/10/12	0	0	0	0	5,364	8:30 AM	442	188	254	8.2%	57.5%	6:00 PM	469	278	191	8.7%	59.3%	4	35	--	--
382	CR 156	150' E of CR 181	03/20/12	0	0	0	0	620	6:15 AM	57	49	8	9.2%	86.0%	5:15 PM	66	15	51	10.6%	77.3%	2	25	--	--
386	CR 625	250' S of CR 48	04/10/12	0	0	0	0	371	7:30 AM	27	16	11	7.3%	59.3%	4:15 PM	39	17	22	10.5%	56.4%	2	35	--	--
388	CR 728	850' W of CR 469	03/27/12	0	0	0	0	351	7:15 AM	31	14	17	8.8%	54.8%	3:45 PM	32	18	14	9.1%	56.3%	2	35	--	--
416	SR 48 (Main St N)	100' N of W Dade Ave	04/11/12	0	0	0	0	11,222	8:45 AM	780	454	326	7.0%	58.2%	3:00 PM	928	438	490	8.3%	52.8%	4	40	--	--
390	Seminole Ave E	100' W of N Justice St	04/11/12	0	0	0	0	941	7:30 AM	84	34	50	8.9%	59.5%	3:00 PM	94	7	87	10.0%	92.6%	2	35	--	--
392	SR 44	1250' W of CR 243	04/19/12	0	0	0	0	9,582	7:00 AM	730	486	244	7.6%	66.6%	4:15 PM	801	312	489	8.4%	61.0%	4	60	--	--
394	SR 44	750' E of CR 231	04/10/12	0	0	0	0	9,297	7:00 AM	655	211	444	7.0%	67.8%	5:00 PM	731	438	293	7.9%	59.9%	5	60	--	--
396	SR 44	250' W of CR 229	04/10/12	0	0	0	0	17,306	7:00 AM	1,205	699	506	7.0%	58.0%	4:30 PM	1,299	545	754	7.5%	58.0%	5	45	--	--
398	SR 44	700' E of Buena Vista Blvd	04/10/12	0	0	0	0	14,081	7:15 AM	984	575	409	7.0%	58.4%	4:45 PM	1,136	502	634	8.1%	55.8%	4	45	--	--
456	SR 44	300' W of CR 143	04/10/12	0	0	0	0	14,160	7:15 AM	1,031	616	415	7.3%	59.7%	4:30 PM	1,126	489	637	8.0%	56.6%	4	55	--	--
406	SR 471	600' N of CR 478 / NW 4th Ave	03/22/12	0	0	0	0	8,091	7:00 AM	593	329	264	7.3%	55.5%	3:30 PM	575	259	316	7.1%	55.0%	2	35	--	--
404	SR 471	200' S of NE 2nd Ave	03/22/12	0	0	0	0	8,942	7:00 AM	686	360	326	7.7%	52.5%	4:00 PM	658	328	330	7.4%	50.2%	2	35	--	--
402	SR 471	200' N of SE 1st Ave / CR 478	04/11/12	0	0	0	0	8,006	7:15 AM	682	379	303	8.5%	55.6%	4:30 PM	602	284	318	7.5%	52.8%	2	35	--	--
408	SR 471	1500' N of CR 520	04/11/12	0	0	0	0	4,377	7:00 AM	338	211	127	7.7%	62.4%	4:00 PM	301	140	161	6.9%	53.5%	2	55	--	--
410	SR 48 (CR 48 W)	100' E of SW 20th Dr	04/11/12	0	0	0	0	12,459	8:30 AM	719	352	367	5.8%	51.0%	3:30 PM	973	418	555	7.8%	57.0%	2	40	--	--

**Sumter County Annual Traffic Counts
2012 Volumes Summary**

Sta ID	Street	Location Description	Start Date	ADT					A.M. Peak Hour					P.M. Peak Hour					# of Lanes	Posted Speed	Golf Cart			
				2008	2009	2010	2011	2012	Time	Total	NB/EB	SB/WB	'K'	'D'	Time	Total	NB/EB	SB/WB			'K'	'D'	2011	2012
412	SR 48 (CR 48 W)	650' W of N W St	03/27/12	0	0	0	0	13,589	9:00 AM	807	352	455	5.9%	56.4%	3:30 PM	1,155	489	666	8.5%	57.7%	2	40	--	--
414	SR 48 (CR 48 W)	125' E of N Wall St	03/27/12	0	0	0	0	10,971	9:00 AM	690	287	403	6.3%	58.4%	3:15 PM	938	422	516	8.5%	55.0%	2	40	--	--
418	US 27/US 441/SR 500	1000' NW of CR 109	04/11/12	0	0	0	0	38,295	9:00 AM	2,619	1,209	1,410	6.8%	53.8%	3:15 PM	3,033	1,612	1,421	7.9%	53.1%	6	45	--	--
458	US 27/US 441/SR 500	300' SE of Buenos Aires Blvd	03/29/12	0	0	0	0	38,590	9:00 AM	2,673	1,361	1,312	6.9%	50.9%	3:00 PM	2,989	1,492	1,497	7.7%	50.1%	6	45	--	--
422	US 301/SR 35 (Main St)	700' S of W Noble Ave	04/11/12	0	0	0	0	9,038	7:30 AM	705	426	279	7.8%	60.4%	4:15 PM	729	313	416	8.1%	57.1%	4	45	--	--
424	US 301/SR 35 (Noble Ave)	225' W of N Florida St	04/11/12	0	0	0	0	7,198	7:30 AM	565	298	267	7.8%	52.7%	3:30 PM	595	277	318	8.3%	53.4%	2	30	--	--
426	US 301/SR 35 (Noble Ave)	450' E of N Florida St	03/22/12	0	0	0	0	4,946	7:30 AM	423	226	197	8.6%	53.4%	4:45 PM	427	187	240	8.6%	56.2%	2	30	--	--
428	US 301/SR 35	650' S of CR 542	04/11/12	0	0	0	0	5,027	7:00 AM	425	262	163	8.5%	61.6%	3:15 PM	424	200	224	8.4%	52.8%	2	55	--	--
430	US 301/SR 35	450' N of CR 520	03/21/12	0	0	0	0	6,019	7:30 AM	465	235	230	7.7%	50.5%	4:30 PM	544	258	286	9.0%	52.6%	2	50	--	--
432	US 301/SR 35	425' S of CR 522 / N of CR 470	04/19/12	0	0	0	0	12,208	7:15 AM	1,005	590	415	8.2%	58.7%	3:30 PM	1,008	388	620	8.3%	61.5%	3	45	--	--
434	US 301/SR 35	500' S of CR 470	04/11/12	0	0	0	0	12,426	7:15 AM	1,064	576	488	8.6%	54.1%	3:30 PM	1,030	438	592	8.3%	57.5%	2	45	--	--
436	US 301/SR 35	225' S of Clark Ave	03/20/12	0	0	0	0	7,796	7:15 AM	575	274	301	7.4%	52.3%	3:45 PM	663	356	307	8.5%	53.7%	2	35	--	--
438	US 301/SR 35 (Warm Springs Ave)	250' E of CR 523 / Stokes St	03/20/12	0	0	0	0	8,138	7:15 AM	565	283	282	6.9%	50.1%	3:15 PM	698	329	369	8.6%	52.9%	2	45	--	--
460	US 301/SR 35 (Main St)	900' S of Villager RV Park / N of Turnpike	03/20/12	0	0	0	0	17,221	7:15 AM	1,176	616	560	6.8%	52.4%	3:45 PM	1,417	733	684	8.2%	51.7%	4	45	--	--
442	US 301/SR 35	100' S of CR 130	04/11/12	0	0	0	0	20,664	7:15 AM	1,577	643	934	7.6%	59.2%	4:45 PM	1,727	1,028	699	8.4%	59.5%	4	45	--	--
446	US 301/SR 35	600' S of CR 222	04/11/12	0	0	0	0	19,721	7:15 AM	1,536	651	885	7.8%	57.6%	5:00 PM	1,611	968	643	8.2%	60.1%	4	55	--	--
448	US 301/SR 35	700' S of CR 472	04/11/12	0	0	0	0	16,547	7:15 AM	1,237	553	684	7.5%	55.3%	4:45 PM	1,324	710	614	8.0%	53.6%	4	45	--	--
450	US 301/SR 35	920' S of SE 180th St / CR 12 / Co Line Rd	04/11/12	0	0	0	0	17,373	7:00 AM	1,623	1,117	506	9.3%	68.8%	4:45 PM	1,486	504	982	8.6%	66.1%	4	45	--	--
474	St. Charles Pl (N)	650' NW of Buena Vista Blvd (NW of golf path)	04/10/12	0	0	0	0	3,700	8:45 AM	258	157	101	7.0%	60.9%	3:00 PM	404	190	214	10.9%	53.0%	2	20	--	1,371
476	Tamarind Grove Run	550' W of St Charles Pl	04/10/12	0	0	0	0	3,124	9:00 AM	294	150	144	9.4%	51.0%	3:00 PM	337	170	167	10.8%	50.4%	2	20	--	1,013
478	Buttonwood Run	800' NW of St Charles Pl	04/10/12	0	0	0	0	3,659	9:00 AM	318	137	181	8.7%	56.9%	3:00 PM	460	216	244	12.6%	53.0%	2	20	--	2,135
480	Pennecamp Dr	600' N of St Charles Pl	04/10/12	0	0	0	0	3,415	9:00 AM	280	102	178	8.2%	63.6%	3:15 PM	447	243	204	13.1%	54.4%	2	20	--	1,572
472	St. Charles Pl	850' W of Bailey Trail	04/10/12	0	0	0	0	6,973	9:00 AM	558	354	204	8.0%	63.4%	3:15 PM	893	405	488	12.8%	54.6%	2	20	--	3,893
464	CR 121	100' S of CR 128	04/11/12	0	0	0	0	1,841	7:30 AM	177	57	120	9.6%	67.8%	5:00 PM	165	86	79	9.0%	52.1%	2	30	--	--
470	St. Charles Pl (S)	1000' NW of Buena Vista Blvd (NW of golf path)	04/10/12	0	0	0	0	7,212	9:00 AM	626	330	296	8.7%	52.7%	3:15 PM	754	399	355	10.5%	52.9%	2	20	--	2,090
462	CR 209	N of CR 222		0	0	0	0	U/C													2	35	--	--
466	CR 102	450' W of CR 103	04/11/12	0	0	0	0	831	7:15 AM	93	31	62	11.2%	66.7%	4:30 PM	90	65	25	10.8%	72.2%	2	35	--	--
468	CR 104	350' W of CR 103	04/19/12	0	0	0	0	1,384	7:00 AM	314	212	102	22.7%	67.5%	4:45 PM	131	40	91	9.5%	69.5%	2	35	--	--
482	Odell Circle	450' NE of Morse Blvd N (N)	04/19/12	0	0	0	0	5,310	8:30 AM	406	169	237	7.6%	58.4%	3:15 PM	623	341	282	11.7%	54.7%	2	30	--	2,737