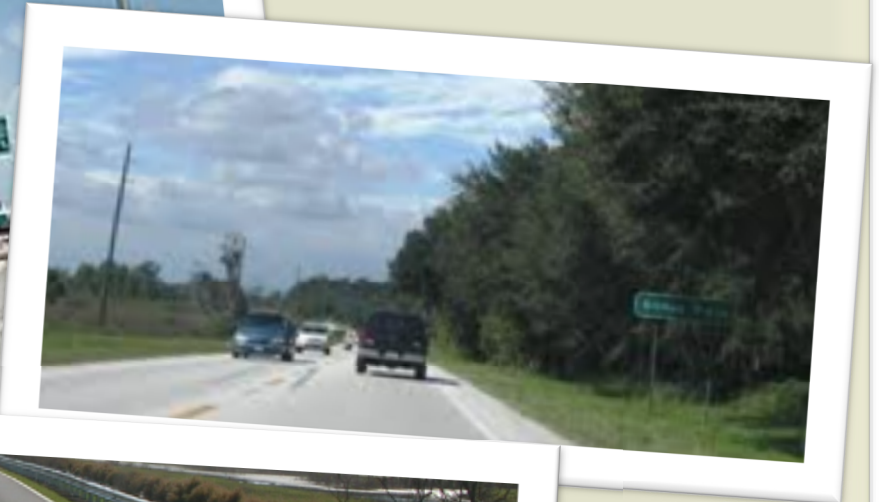
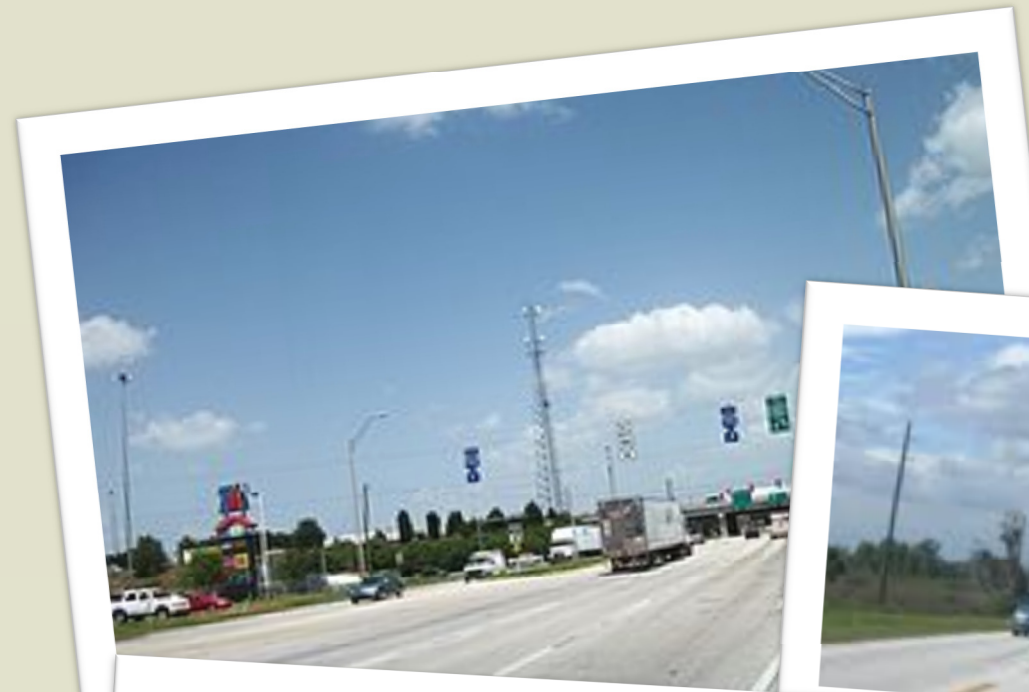
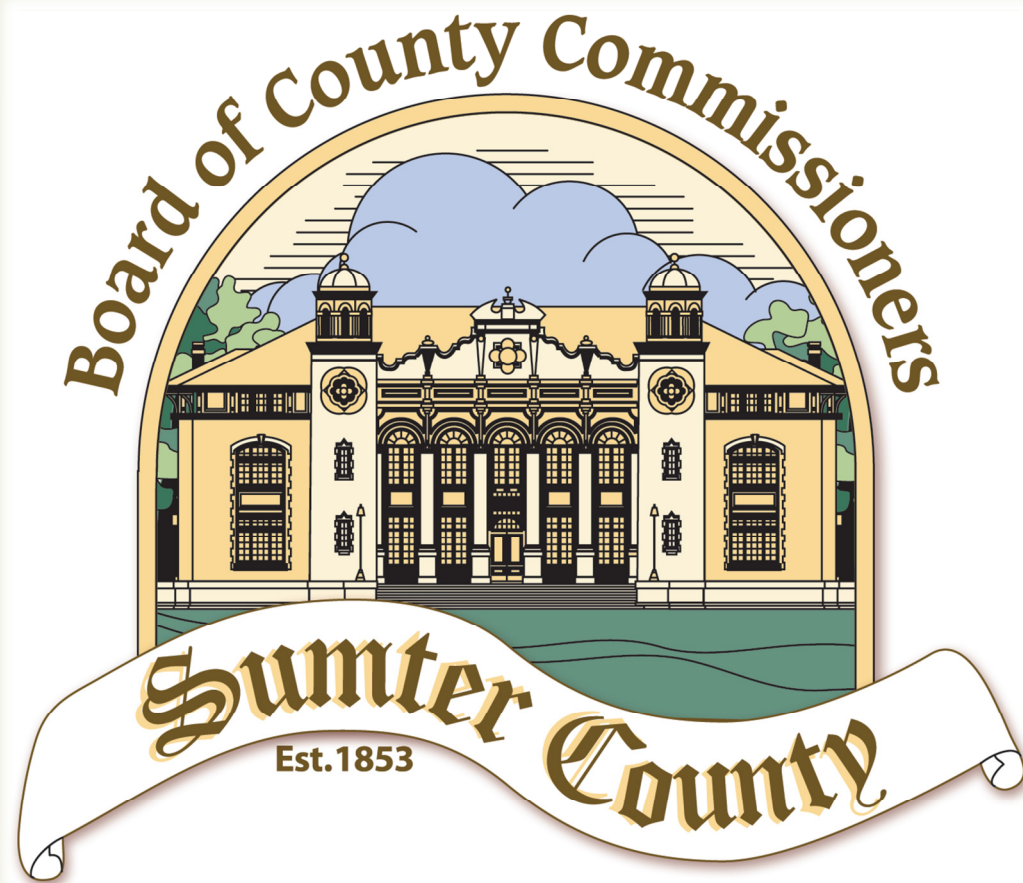


FLORIDA
Sumter County



ANNUAL TRAFFIC REPORT 2011 TRAFFIC COUNTS

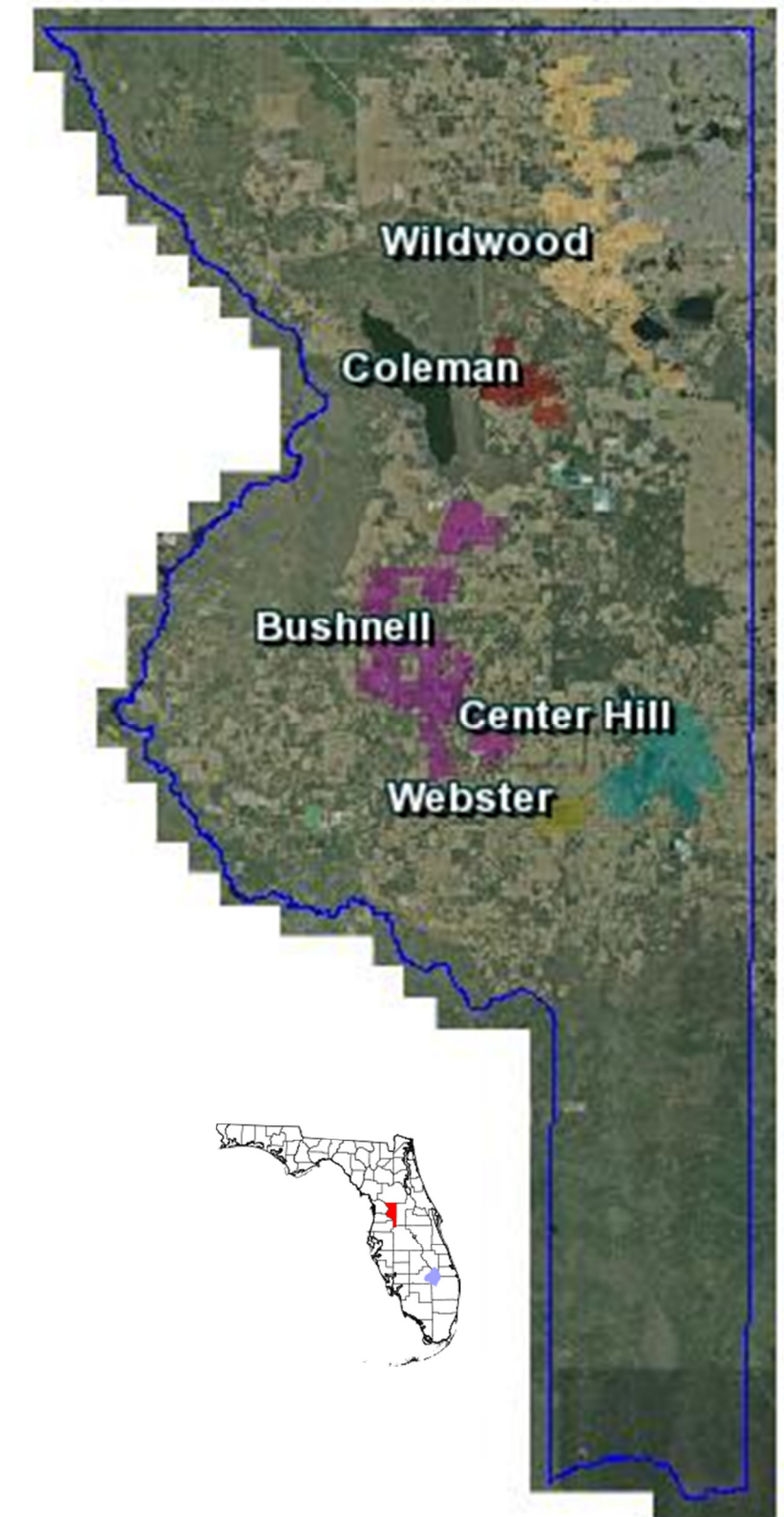


SUMTER COUNTY ANNUAL TRAFFIC COUNT PROGRAM

Every year, Sumter County Public Works Department implements a traffic count program. The County collects and analyzes the traffic data, using the information to identify traffic flow trends over time and to support the decision-making process related to road maintenance and project development. The traffic data is used by County, municipalities within the County, and other transportation agencies in the review of road improvement projects, traffic impact studies for proposed developments, and level-of-service ratings for maintenance operations. In the private

sector - realtors, bankers, developers, economic development agencies, as well as citizens also use traffic count data for a variety of purposes. This information is provided via this web site as a service of Sumter County in partnership with the Lake~Sumter Metropolitan Planning Organization.

The SUMTER COUNTY ANNUAL TRAFFIC REPORT – 2011 TRAFFIC COUNTS provides the latest traffic count information. Data collection was conducted during the months of March, April and May 2011 during the historical peak season of activity in Sumter County. The counts were obtained using pneumatic traffic data recorders and the locations were marked using GPS units. Depending on the location, data was collected for 24, 48, or 72 hours.



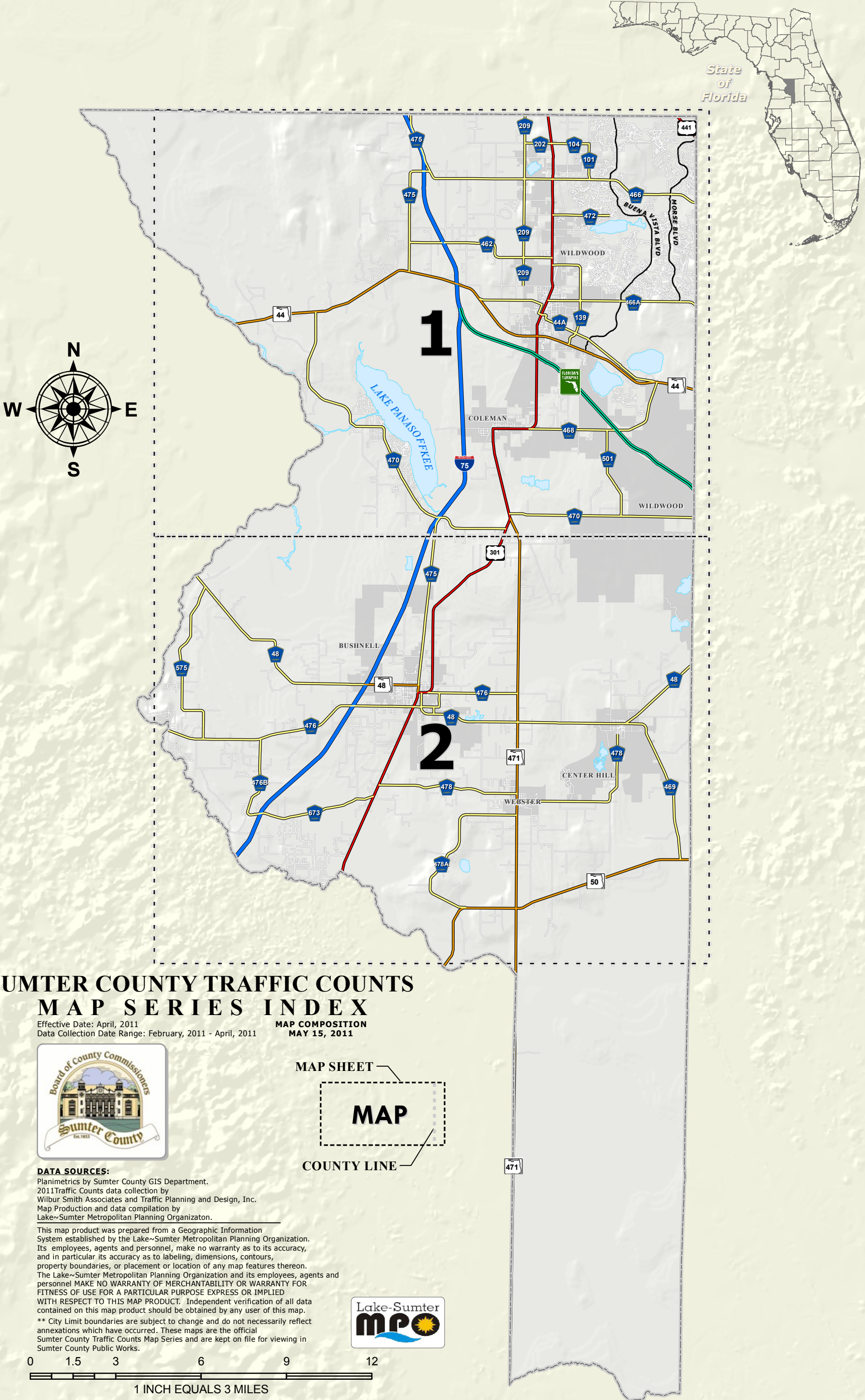
This report contains a series of maps and a table. The following information is intended to explain the headings in the table as well as key definitions and information associated with the Annual Traffic Count Program:

1	2	3	4	5	6					7					8					9	10	11			
Sta ID	Street	Location Description	Start Date	Duration	ADT					A.M. Peak Hour					P.M. Peak Hour					# of Lanes	Posted Speed	Golf Cart			
					2007	2008	2009	2010	2011	Time	Total	NB/EB	SB/WB	'K'	'D'	Time	Total	NB/EB	SB/WB	'K'	'D'			2010	2011

1. Sta ID – This is the unique station number assigned to each count station for consistent tracking.
2. Street – Name of the street/road where the count was taken
3. Location Description – Location that the count was obtained described by distance from the nearest major cross street. The location is also marked by a GPS point location.
4. Start Date – The date the volume count was started
5. Duration – Counts were taken for a period of 24-hrs (1 day) or 48-hrs (2 days)
6. ADT – The “Average Daily Trips” is a measure of the traffic volume observed during the 2011 count period. The historical (2007- 2010) ADT is also provided for reference. An ADT of 0 signifies that a count was not obtained in that year.
7. A.M. Peak Hour – The traffic information observed for the highest one hour period during the morning.
 - Time – The start time of the A.M. peak hour (e.g. 9:15 means the peak hour is 9:15 to 10:15)
 - Total – Total traffic observed during the A.M. peak hour
 - NB/EB – The traffic volume observed in the NB or EB (depending on road orientation) during the A.M. peak hour
 - SB/WB – The traffic volume observed in the SB or WB (depending on road orientation) during the A.M. peak hour
 - K – This factor reflects the ratio of total A.M. peak hour traffic to the total daily traffic (*if peak hour volume is 100 vehicles and ADT is 1,000, then $K = \text{peak}/\text{daily} = 100/1,000 = 0.1$*)
 - D – This factor reflects the ratio of peak direction peak hour traffic to the total A.M. peak hour traffic (*if volume in EB direction 550 vehicles and WB direction is 450 vehicles, then total A.M. peak hour volume is 1,000 vehicles and $D = \text{peak direction}/\text{total peak} = 550/1,000 = 0.55$*)
8. P.M. Peak Hour – The traffic information for the highest one hour period during the evening peak.
 - Time – The start time of the P.M. peak hour (e.g. 4:30 means the peak hour is 4:30 to 5:30)
 - Total – Total traffic observed during the P.M. peak hour
 - NB/EB – The traffic volume observed in the NB or EB (depending on road orientation) during the P.M. peak hour
 - SB/WB – The traffic volume observed in the SB or WB (depending on road orientation) during the P.M. peak hour
 - K – This factor reflects the ratio of total P.M. peak hour traffic to the total daily traffic (if peak hour volume is 100 vehicles and ADT is 1,000, then $K = \text{peak}/\text{daily} = 100/1,000 = 0.1$)
 - D – This factor reflects the ratio of peak direction peak hour traffic to the total P.M. peak hour traffic (if volume in EB direction 550 vehicles and WB direction is 450 vehicles, then total P.M. peak hour volume is 1,000 vehicles and $D = \text{peak direction}/\text{total peak} = 550/1,000 = 0.55$)
9. # of Lanes – The number of travel lanes on the roadway at the time that the count was taken
10. Posted Speed – The posted speed limit on the road at the location where the count was taken
11. Golf Cart – Bi-directional golf car traffic observed on dedicated golf cart paths or golf cart lanes at the location where the count was taken. The count observed in 2010 is also provided.

2011 SUMTER COUNTY ANNUAL TRAFFIC COUNTS

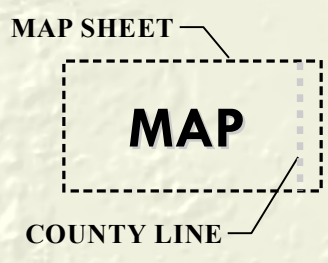
M I P O T R A F F I C C O U N T S P R O G R A M



SUMTER COUNTY TRAFFIC COUNTS MAP SERIES INDEX

Effective Date: April, 2011
Data Collection Date Range: February, 2011 - April, 2011

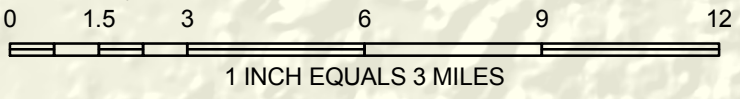
MAP COMPOSITION
MAY 15, 2011



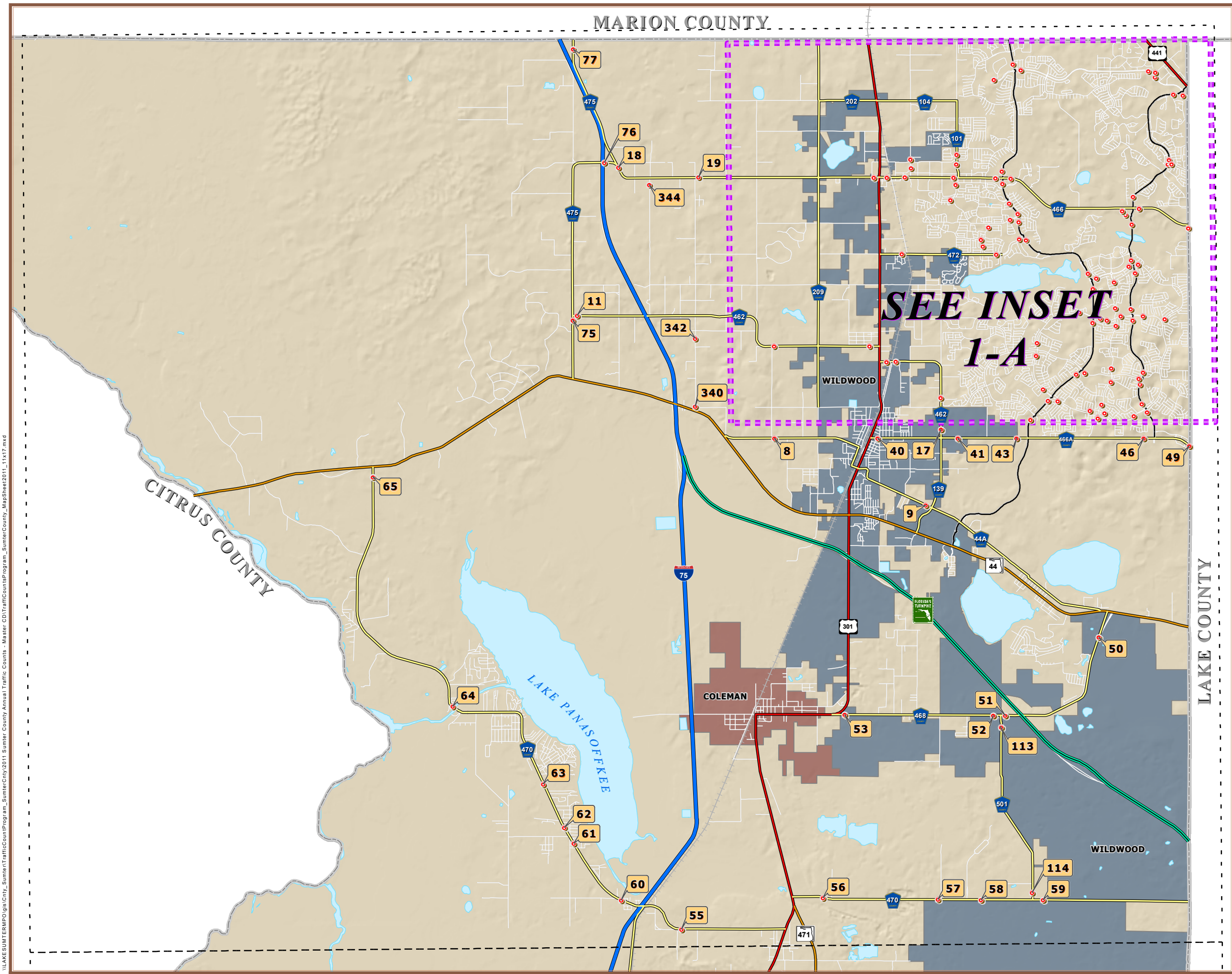
DATA SOURCES:
Planimetrics by Sumter County GIS Department.
2011 Traffic Counts data collection by Wilbur Smith Associates and Traffic Planning and Design, Inc.
Map Production and data compilation by Lake~Sumter Metropolitan Planning Organization.

This map product was prepared from a Geographic Information System established by the Lake~Sumter Metropolitan Planning Organization. Its employees, agents and personnel, make no warranty as to its accuracy, and in particular its accuracy as to labeling, dimensions, contours, property boundaries, or placement or location of any map features thereon. The Lake~Sumter Metropolitan Planning Organization and its employees, agents and personnel MAKE NO WARRANTY OF MERCHANTABILITY OR WARRANTY FOR FITNESS OF USE FOR A PARTICULAR PURPOSE EXPRESS OR IMPLIED WITH RESPECT TO THIS MAP PRODUCT. Independent verification of all data contained on this map product should be obtained by any user of this map.

** City Limit boundaries are subject to change and do not necessarily reflect annexations which have occurred. These maps are the official Sumter County Traffic Counts Map Series and are kept on file for viewing in Sumter County Public Works.



\\LAKESUMTERMPO\gis\City_Sumter\TrafficCountsProgram_SumterCnty\2011_Sumter_County_Annual_Traffic_Counts - Master_CD\TrafficCountsProgram_SumterCounty_IndexMap2011_11x17.mxd



L:\LAKE\SUMTER\MPO\GIS\Cnty_Sumter\TrafficCountProgram_SumterCounty_MapSheet2011_11x17.mxd

1 Inch equals 1.5 Miles

2011 SUMTER COUNTY ANNUAL TRAFFIC COUNTS MAP SERIES

LEGEND

- Traffic Count Station Location
- County Road
- State Road
- US Highway
- Interstate
- Turnpike
- Active Railroad
- Water Body
- County Delineation

Station ID

MAP

MAP SHEET
COUNTY LINE



Incorporated Area

- Bushnell
- Center Hill
- Coleman
- Webster
- Wildwood

**** City Limit boundaries are subject to change and do not necessarily reflect annexations which have occurred. These maps are the official Sumter County Traffic Counts Map Series and are kept on file for viewing in Sumter County Public Works.**

DATA SOURCES:
Lake County GIS Department; Planimetrics
Data Compilation and Map production
compliments of the
Lake-Sumter Metropolitan Planning Organization.

This map product was prepared from a Geographic Information System established by the Lake-Sumter Metropolitan Planning Organization. Its employees, agents and personnel, make no warranty as to its accuracy, and in particular its accuracy as to labeling, dimensions, contours, property boundaries, or placement or location of any map features thereon. The Lake-Sumter Metropolitan Planning Organization and its employees, agents and personnel **MAKE NO WARRANTY OF MERCHANTABILITY OR WARRANTY FOR FITNESS OF USE FOR A PARTICULAR PURPOSE EXPRESS OR IMPLIED WITH RESPECT TO THIS MAP PRODUCT.** Independent verification of all data contained on this map product should be obtained by any user of this map.

MAP SERIES INDEX

N
S

MAP SHEET
1

State of Florida

Lake-Sumter
mpo
Metropolitan
Planning Organization

2011 SUMTER COUNTY ANNUAL TRAFFIC COUNTS MAP SERIES



LEGEND Station ID

- Traffic Count Station Location
- County Road
- State Road
- US Highway
- Interstate
- Turnpike
- Active Railroad
- Water Body
- County Delineation

Incorporated Area

- Bushnell
- Center Hill
- Coleman
- Webster
- Wildwood

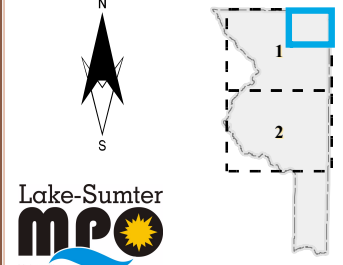
** City Limit boundaries are subject to change and do not necessarily reflect annexations which have occurred. These maps are the official Sumter County Traffic Counts Map Series and are kept on file for viewing in Sumter County Public Works.

DATA SOURCES:
 Lake County GIS Department; Planimetrics
 Data Compilation and Map production
 compliments of the
 Lake-Sumter Metropolitan Planning Organization.

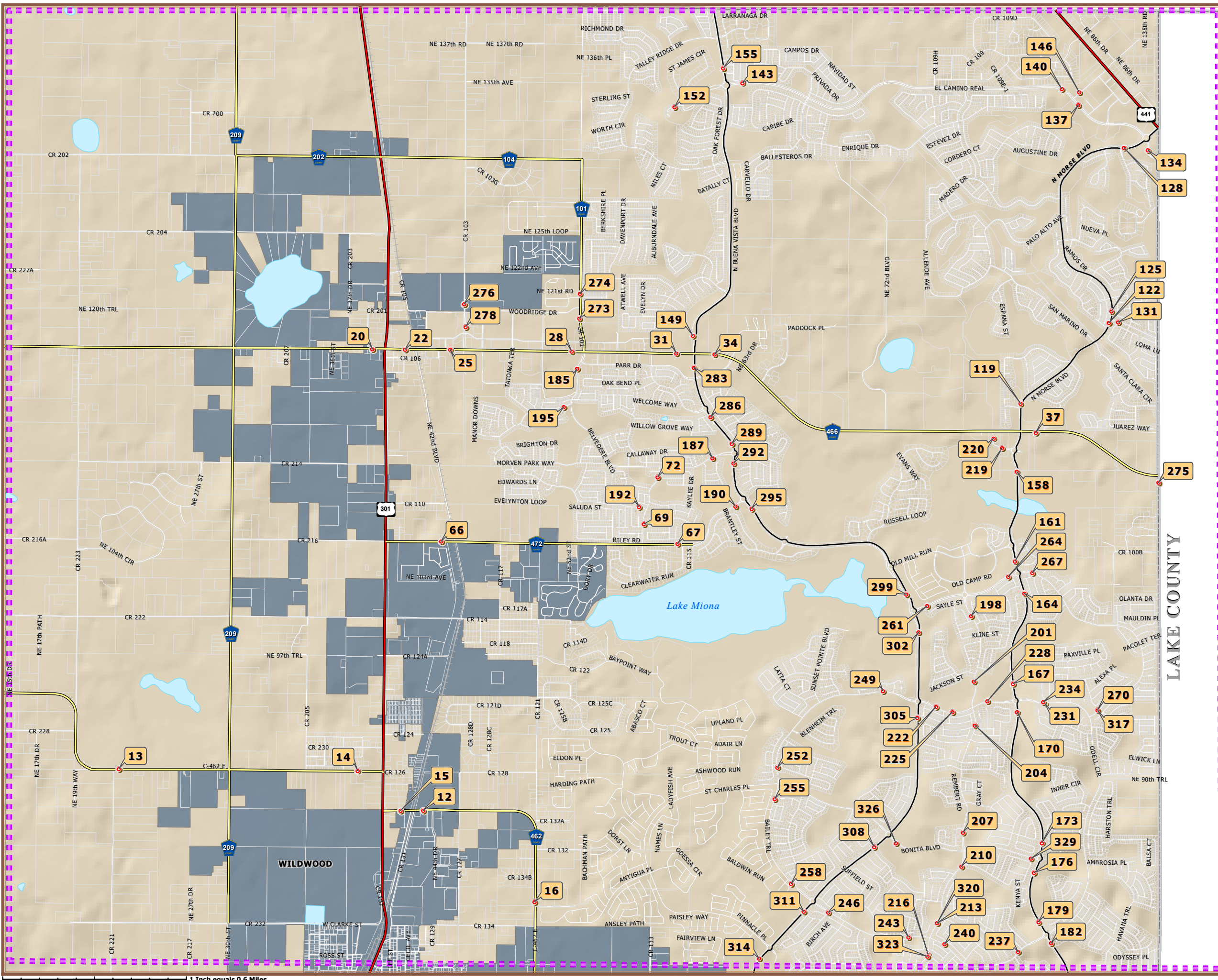
This map product was prepared from a Geographic Information System established by the Lake-Sumter Metropolitan Planning Organization. Its employees, agents and personnel, make no warranty as to its accuracy, and in particular its accuracy as to labeling, dimensions, contours, property boundaries, or placement or location of any map features thereon. The Lake-Sumter Metropolitan Planning Organization and its employees, agents and personnel MAKE NO WARRANTY OF MERCHANTABILITY OR WARRANTY FOR FITNESS OF USE FOR A PARTICULAR PURPOSE EXPRESS OR IMPLIED WITH RESPECT TO THIS MAP PRODUCT. Independent verification of all data contained on this map product should be obtained by any user of this map.



MAP SERIES INDEX



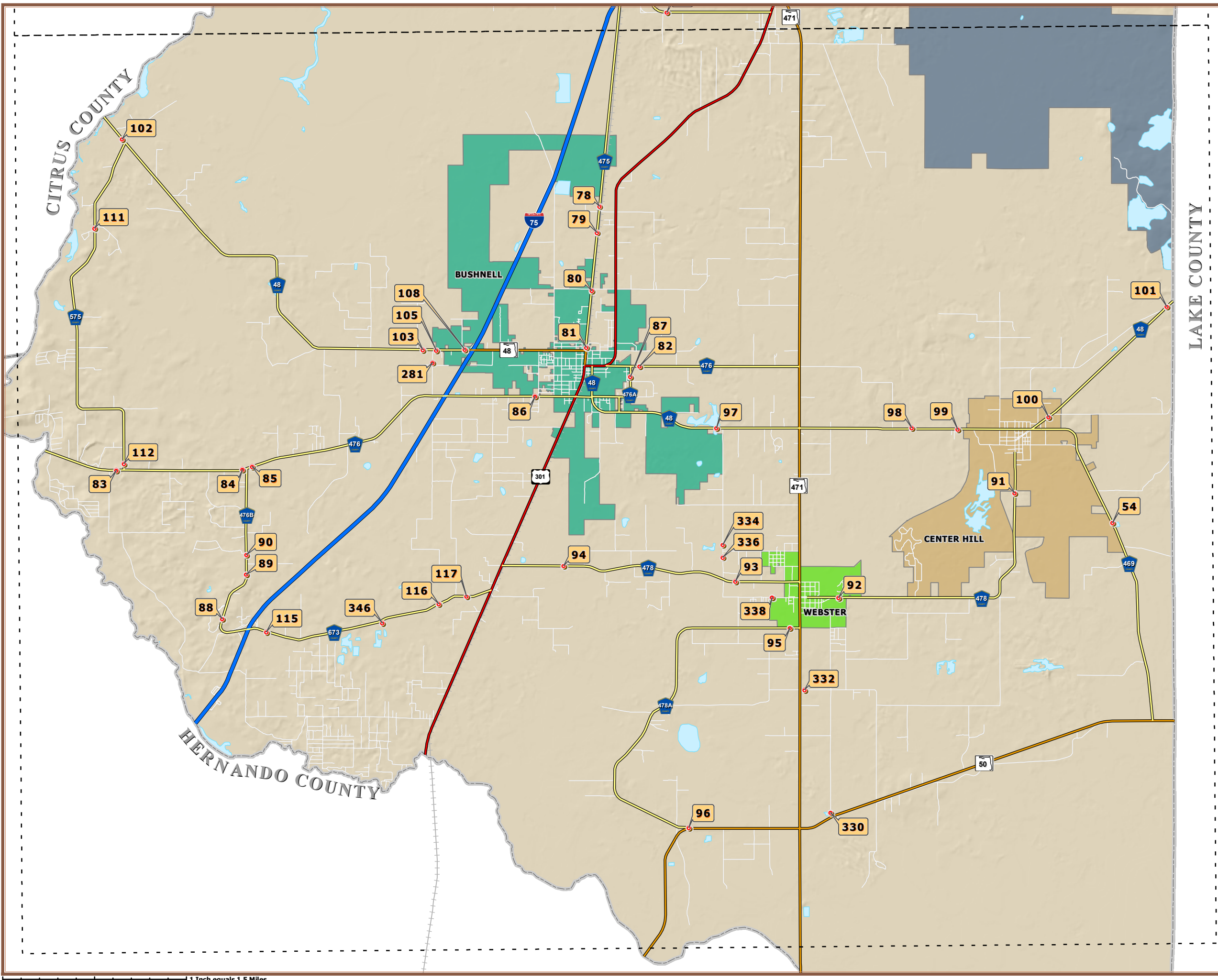
MAP INSET 1-A



I:\LAKE\SUMTER\PO\GIS\City\Sumter\City\2011 Sumter County Annual Traffic Counts - Master CD\TrafficCountsProgram_SumterCounty_MapSheet2011_11x17_1A.mxd

1 Inch equals 0.6 Miles

\\LAKESUMTERMPO\gis\City_Sumter\TrafficCountsProgram_SumterCounty\MapSheet2011_11x17.mxd



0 0.75 1.5 3 1 Inch equals 1.5 Miles

2011 SUMTER COUNTY ANNUAL TRAFFIC COUNTS MAP SERIES



LEGEND Station ID

- Traffic Count Station Location
- County Road
- State Road
- US Highway
- Interstate
- Turnpike
- Active Railroad
- Water Body
- County Delineation



MAP SHEET COUNTY LINE

Incorporated Area

- Bushnell
- Center Hill
- Coleman
- Webster
- Wildwood

** City Limit boundaries are subject to change and do not necessarily reflect annexations which have occurred. These maps are the official Sumter County Traffic Counts Map Series and are kept on file for viewing in Sumter County Public Works.

DATA SOURCES:
Lake County GIS Department; Planimetrics
Data Compilation and Map production
compliments of the
Lake-Sumter Metropolitan Planning Organization.

This map product was prepared from a Geographic Information System established by the Lake-Sumter Metropolitan Planning Organization. Its employees, agents and personnel, make no warranty as to its accuracy, and in particular its accuracy as to labeling, dimensions, contours, property boundaries, or placement or location of any map features thereon. The Lake-Sumter Metropolitan Planning Organization and its employees, agents and personnel MAKE NO WARRANTY OF MERCHANTABILITY OR WARRANTY FOR FITNESS OF USE FOR A PARTICULAR PURPOSE EXPRESS OR IMPLIED WITH RESPECT TO THIS MAP PRODUCT. Independent verification of all data contained on this map product should be obtained by any user of this map.



MAP SERIES INDEX



MAP SHEET

2



**Sumter County Annual Traffic Counts
2011 Volumes Summary**

Sta ID	Street	Location Description	Start Date	Duration	ADT					A.M. Peak Hour					P.M. Peak Hour					# of Lanes	Posted Speed	Golf Cart			
					2007	2008	2009	2010	2011	Time	Total	NB/EB	SB/WB	'K'	'D'	Time	Total	NB/EB	SB/WB			'K'	'D'	2010	2011
60	C-470N	200' North/West of CR 491	03/22/11	48-HR	8,739	8,484	8,129	7,876	8,092	7:15 AM	625	217	408	7.7%	65.3%	3:30 PM	689	408	281	8.5%	59.2%	2	35	--	--
61	C-470N	100' North of CR 483A	03/22/11	48-HR	7,936	7,956	7,504	7,429	7,633	7:30 AM	597	213	384	7.8%	64.3%	3:45 PM	655	400	255	8.6%	61.1%	2	45	--	--
62	C-470N	300' North CR 479	03/22/11	48-HR	7,455	7,422	7,366	6,883	6,903	7:30 AM	500	186	314	7.2%	62.8%	3:45 PM	600	359	241	8.7%	59.8%	2	45	--	--
63	C-470N	500' East of CR 439	03/22/11	48-HR	7,289	7,424	7,114	6,733	6,936	10:45 AM	492	238	254	7.1%	51.6%	3:30 PM	605	270	335	8.7%	55.4%	2	45	--	--
64	C-470N	1320' South of CR 400	03/22/11	48-HR	3,160	5,110	5,467	3,135	3,547	9:30 AM	235	110	125	6.6%	53.2%	3:45 PM	325	171	154	9.1%	52.6%	2	45	--	--
65	C-470N	300' South of SR 44W	03/22/11	48-HR	3,285	3,680	3,607	2,279	2,458	10:45 AM	172	95	77	7.0%	55.4%	4:15 PM	238	119	119	9.6%	50.0%	2	55	--	--
66	C-472	325' West of RR Tracks	03/22/11	48-HR	3,726	3,297	2,887	2,624	3,755	7:00 AM	242	160	82	6.4%	66.2%	3:00 PM	329	149	180	8.8%	54.7%	2	35	--	--
67	C-472	500' West of CR 115	03/22/11	48-HR	4,709	4,146	4,076	4,261	4,619	11:15 AM	372	204	168	8.0%	54.9%	3:15 PM	385	187	198	8.3%	51.5%	2	35	--	--
69	Lynn Haven Ln	150' N. of C-472	04/26/11	24-HR	0	2,161	4,105	2,971	2,389	11:15 AM	205	98	107	8.6%	52.2%	4:30 PM	201	84	117	8.4%	58.2%	2	30	368	522
72	Lynn Haven Ln	200' S. of Belvedere Blvd.	04/26/11	24-HR	0	2,552	4,233	4,233	2,509	11:15 AM	246	110	136	9.8%	55.3%	3:00 PM	199	119	80	7.9%	59.8%	2	30	1,029	1,345
75	C-475N	700' South of C-462W	03/22/11	48-HR	2,046	2,450	2,137	2,280	2,771	7:00 AM	228	129	99	8.2%	56.6%	4:15 PM	281	109	172	10.1%	61.3%	2	55	--	--
76	C-475N	1500' West of C-466W	03/22/11	48-HR	2,028	2,595	2,461	2,577	2,801	7:00 AM	229	138	91	8.2%	60.2%	3:30 PM	276	110	166	9.8%	60.2%	2	50	--	--
77	C-475N	1320' South of Marion Co	03/22/11	48-HR	4,720	4,417	4,302	4,135	4,255	7:00 AM	356	136	220	8.4%	61.8%	4:00 PM	382	204	178	9.0%	53.4%	2	55	--	--
78	C-475S	200' North of CR 532W	03/22/11	48-HR	4,257	3,959	3,818	3,915	3,611	7:30 AM	282	122	160	7.8%	56.8%	3:15 PM	314	174	140	8.7%	55.5%	2	55	--	--
79	C-475S	2500' South of CR 532W	03/22/11	48-HR	4,423	4,627	4,548	4,579	4,199	11:15 AM	320	136	184	7.6%	57.6%	3:45 PM	356	191	165	8.5%	53.6%	2	55	--	--
80	C-475S	100' South of CR 542	03/22/11	48-HR	4,658	5,027	4,802	5,142	5,030	11:15 AM	397	175	222	7.9%	55.9%	3:00 PM	461	228	233	9.2%	50.6%	4	45	--	--
81	C-475S	500' North of SR 48W	03/22/11	48-HR	9,026	10,592	10,675	9,527	9,062	11:15 AM	791	432	359	8.7%	54.6%	3:15 PM	901	385	516	9.9%	57.3%	5	35	--	--
82	C-476E	500' East of C-476A	03/22/11	48-HR	1,620	1,747	1,512	1,841	1,734	7:45 AM	126	38	88	7.2%	70.1%	3:00 PM	160	87	73	9.2%	54.5%	2	35	--	--
83	C-476W	500' West of C-575	03/22/11	48-HR	3,421	3,296	3,224	3,033	3,034	7:15 AM	227	148	79	7.5%	65.1%	4:30 PM	272	95	177	8.9%	65.1%	2	55	--	--
84	C-476W	100' West of C-476B	03/29/11	48-HR	3,878	3,078	3,496	3,723	3,381	7:30 AM	276	194	82	8.1%	70.4%	4:30 PM	334	117	217	9.9%	65.0%	2	98	--	--
85	C-476W	100' East of C-476B	03/29/11	48-HR	3,615	3,929	3,324	3,677	3,312	7:30 AM	273	170	103	8.2%	62.4%	4:30 PM	308	132	176	9.3%	57.2%	2	98	--	--
86	C-476W	500' West of CR 603	03/22/11	48-HR	3,965	4,288	4,306	4,386	4,272	7:15 AM	393	246	147	9.2%	62.5%	4:30 PM	402	150	252	9.4%	62.7%	2	45	--	--
87	C-476A	2000' South of C-476E	03/22/11	48-HR	525	498	506	517	504	7:30 AM	35	23	12	6.9%	65.2%	4:15 PM	52	23	29	10.3%	55.8%	2	35	--	--
88	C-476B	400' South of Cemetary	03/29/11	48-HR	2,606	2,296	2,205	1,917	1,799	7:15 AM	157	88	69	8.7%	56.2%	3:45 PM	205	89	116	11.4%	56.6%	2	45	--	--
89	C-476B	1000' South of S.C.I.	03/29/11	48-HR	1,673	1,934	1,814	1,661	1,576	7:15 AM	157	74	83	9.9%	53.0%	3:45 PM	173	91	82	10.9%	52.6%	2	45	--	--
90	C-476B	1500' North of S.C.I.	03/29/11	48-HR	1,799	2,167	1,988	1,926	1,721	7:15 AM	190	49	141	11.0%	74.1%	3:45 PM	198	145	53	11.5%	73.4%	2	45	--	--
91	C-478E	1 Mile South of C-48E	03/29/11	48-HR	1,070	972	1,003	918	869	7:30 AM	67	41	26	7.7%	60.9%	4:45 PM	105	43	62	12.0%	59.3%	2	55	--	--
92	C-478E	200' East of Ball Park	03/22/11	48-HR	1,691	1,573	1,475	1,545	1,793	7:15 AM	145	54	91	8.0%	62.8%	4:45 PM	177	83	94	9.8%	53.0%	2	35	--	--
93	C-478E	1 Mile West of SR 471	03/22/11	72-HR	1,896	2,029	1,806	2,804	1,744	7:30 AM	162	103	59	9.2%	63.7%	3:15 PM	159	82	77	9.1%	51.6%	2	55	--	--
94	C-478W	1 Mile East of US 301	03/22/11	48-HR	2,129	2,068	1,756	3,640	2,056	2:00 AM	192	104	88	9.3%	54.0%	6:00 PM	183	84	99	8.9%	54.1%	2	55	--	--
95	C-478A	500' West of SR 471	03/22/11	72-HR	645	637	717	601	612	7:00 AM	59	43	16	9.6%	73.5%	4:30 PM	62	24	38	10.1%	61.8%	2	55	--	--
96	C-478A	300' West of CR 755	04/26/11	48-HR	459	550	539	367	345	7:00 AM	31	11	20	8.8%	63.9%	3:45 PM	32	19	13	9.3%	59.4%	2	55	--	--
97	C-48E	500' West of CR 747	03/22/11	48-HR	5,347	4,943	5,426	5,838	5,579	7:45 AM	440	174	266	7.9%	60.5%	4:30 PM	479	233	246	8.6%	51.4%	2	55	--	--
98	C-48E	500' East of CR 747	03/22/11	48-HR	4,666	4,572	4,808	4,735	4,575	7:15 AM	315	116	199	6.9%	63.2%	4:45 PM	392	177	215	8.5%	54.9%	3	55	--	--

**Sumter County Annual Traffic Counts
2011 Volumes Summary**

Sta ID	Street	Location Description	Start Date	Duration	ADT					A.M. Peak Hour					P.M. Peak Hour					# of Lanes	Posted Speed	Golf Cart			
					2007	2008	2009	2010	2011	Time	Total	NB/EB	SB/WB	'K'	'D'	Time	Total	NB/EB	SB/WB			'K'	'D'	2010	2011
99	C-48E	300' West of Old RR Tracks	03/22/11	48-HR	4,802	4,605	4,532	4,932	4,291	10:45 AM	287	144	143	6.7%	50.3%	4:30 PM	344	159	185	8.0%	53.9%	2	55	--	--
100	C-48E	500' West of CR 702	03/22/11	48-HR	3,160	3,152	2,785	3,407	2,437	6:30 AM	182	129	53	7.4%	71.1%	4:45 PM	223	84	139	9.1%	62.4%	2	35	--	--
101	C-48E	50' NE of CR 558	04/26/11	48-HR	3,056	2,854	2,497	2,749	1,301	9:15 AM	148	92	56	11.3%	62.0%	4:30 PM	97	39	58	7.5%	59.8%	2	55	--	--
102	C-48W	100' West of C-575	03/29/11	48-HR	3,820	3,846	3,807	3,679	3,277	7:15 AM	218	131	87	6.7%	60.1%	3:45 PM	317	125	192	9.6%	60.6%	2	45	--	--
103	C-48W	400' West of CR 616	04/05/11	48-HR	4,652	4,730	4,613	5,062	4,754	7:15 AM	346	235	111	7.3%	68.0%	4:45 PM	430	151	279	9.0%	64.9%	2	45	--	--
105	C-48W	250' East of CR 616	04/05/11	48-HR	9,460	9,525	8,464	7,896	7,004	7:15 AM	496	298	198	7.1%	60.0%	4:30 PM	630	243	387	9.0%	61.4%	5	45	--	--
108	C-48W	150' East of CR 313	04/05/11	48-HR	10,113	10,077	9,207	10,146	8,174	11:45 AM	623	306	317	7.6%	50.9%	4:45 PM	701	274	427	8.6%	60.9%	5	45	--	--
111	C-575	1.5 Miles South of C-48W	03/29/11	48-HR	766	803	758	675	643	7:15 AM	50	21	29	7.8%	58.0%	4:00 PM	92	59	33	14.3%	64.1%	2	55	--	--
112	C-575	300' North of C-476W	03/29/11	48-HR	969	1,130	806	823	793	8:00 AM	73	26	47	9.1%	64.6%	3:45 PM	102	70	32	12.8%	68.5%	2	55	--	--
113	C-501	780' South of C-468	03/22/11	48-HR	2,253	2,406	2,001	2,221	2,390	6:45 AM	243	75	168	10.1%	69.3%	3:30 PM	257	166	91	10.7%	64.7%	2	55	--	--
114	C-501	200' North of CR 500	04/05/11	48-HR	2,114	2,247	2,045	2,238	1,916	7:00 AM	176	101	75	9.2%	57.4%	3:15 PM	182	94	88	9.5%	51.6%	2	45	--	--
115	C-673	400' East of I-75	04/05/11	48-HR	2,069	2,443	1,770	1,847	1,693	6:45 AM	155	57	98	9.1%	63.1%	3:45 PM	123	73	50	7.3%	59.3%	2	45	--	--
116	C-673	2640' West of CR 674	03/22/11	48-HR	1,466	1,325	1,303	1,604	1,301	7:15 AM	104	50	54	7.9%	51.9%	3:00 PM	104	54	50	8.0%	52.2%	2	40	--	--
117	C-673	1000' East of CR 674	04/05/11	48-HR	1,826	1,796	1,704	1,690	1,551	7:15 AM	144	86	58	9.2%	59.8%	4:00 PM	116	49	67	7.5%	57.8%	2	45	--	--
119	N. Morse Blvd	150' N of C-466E Gate	04/12/11	24-HR	0	14,733	18,584	18,638	15,578	11:15 AM	1,341	610	731	8.6%	54.5%	3:00 PM	1,224	547	677	7.9%	55.3%	2	35	2,691	4,043
122	N. Morse Blvd.	100' S of Rio Grande	04/05/11	24-HR	0	15,799	22,580	17,846	15,765	11:30 AM	1,420	751	669	9.0%	52.9%	3:00 PM	1,393	666	727	8.8%	52.2%	2	30	2,618	1,431
125	N. Morse Blvd.	100' N of Rio Grande	04/05/11	24-HR	0	9,413	10,549	9,823	9,801	11:30 AM	873	432	441	8.9%	50.5%	3:00 PM	844	395	449	8.6%	53.2%	2	35	789	874
128	N. Morse Blvd.	300' S of Morse CrI	04/05/11	24-HR	11,550	10,872	17,960	11,106	10,704	11:15 AM	957	516	441	8.9%	53.9%	3:15 PM	915	388	527	8.5%	57.6%	4	35	559	501
131	Rio Grande Ave	200' E of Morse Blvd	04/05/11	24-HR	0	8,864	9,783	8,322	7,640	11:45 AM	637	347	290	8.3%	54.5%	3:15 PM	746	317	429	9.8%	57.5%	2	25	1,269	571
134	El Camino Real	200' W of Morse CrI	03/08/11	24-HR	13,886	14,780	12,481	12,298	14,206	10:30 AM	1,097	498	599	7.7%	54.6%	5:15 PM	1,356	661	695	9.5%	51.3%	2	20	--	--
137	El Camino Real	200' E of Buenos Aires Blvd	03/08/11	24-HR	18,771	18,290	16,211	12,404	12,299	10:45 AM	1,075	517	558	8.7%	51.9%	3:00 PM	1,080	633	447	8.8%	58.6%	4	35	--	--
140	El Camino Real	200' W. of Buenos Aires Blvd	04/26/11	24-HR	0	0	0	8,937	15,801	10:15 AM	1,432	693	739	9.1%	51.6%	3:00 PM	1,254	507	747	7.9%	59.6%	4	35	--	--
143	El Camino Real	300' E of Buena Vista CrI	03/08/11	24-HR	0	0	0	16,336	17,097	10:30 AM	1,460	708	752	8.5%	51.5%	3:00 PM	1,430	774	656	8.4%	54.1%	4	35	--	--
146	Buenos Aires	200' N. of El Camino Real	03/08/11	24-HR	0	0	0	10,617	10,906	11:45 AM	1,010	445	565	9.3%	55.9%	3:15 PM	893	373	520	8.2%	58.2%	4	30	--	--
149	N. Buena Vista	400' N of C-466E	03/08/11	24-HR	17,595	17,358	16,689	16,629	17,433	10:45 AM	1,513	721	792	8.7%	52.3%	3:00 PM	1,454	687	767	8.3%	52.8%	4	35	--	--
152	N. Buena Vista	400' S. of Buena Vista Circle	03/08/11	24-HR	17,799	19,808	16,334	19,020	19,977	10:45 AM	1,743	851	892	8.7%	51.2%	3:00 PM	1,623	809	814	8.1%	50.2%	4	35	--	--
155	N. Buena Vista	300' N of Circle	03/08/11	24-HR	0	0	0	16,144	16,667	10:45 AM	1,531	759	772	9.2%	50.4%	3:00 PM	1,443	656	787	8.7%	54.5%	4	35	--	--
158	S. Morse Blvd	200' S. of Mariposa Way	03/08/11	24-HR	0	22,169	21,808	18,995	20,989	10:45 AM	1,920	911	1,009	9.1%	52.6%	3:00 PM	1,724	790	934	8.2%	54.2%	4	20	--	--
161	S. Morse Blvd.	200' N. of Stillwater Trail	03/08/11	24-HR	0	0	16,402	16,937	18,823	10:45 AM	1,706	824	882	9.1%	51.7%	3:00 PM	1,609	788	821	8.5%	51.0%	4	35	--	--
164	S. Morse Blvd	200' S. of Stillwater Trail	03/08/11	24-HR	0	9,083	11,294	11,577	12,120	11:00 AM	1,114	550	564	9.2%	50.6%	3:00 PM	1,014	530	484	8.4%	52.3%	4	35	--	--
167	S. Morse Blvd	200' N of N. Odell Circle	03/08/11	24-HR	0	0	0	11,796	12,139	10:45 AM	1,104	557	547	9.1%	50.5%	3:00 PM	1,032	540	492	8.5%	52.3%	4	35	--	--
170	S. Morse Blvd.	200' S of N. Odell Circle	03/08/11	24-HR	0	0	11,348	6,786	7,232	11:45 AM	670	336	334	9.3%	50.1%	3:00 PM	631	325	306	8.7%	51.5%	4	35	--	--
173	S. Morse Blvd.	200' N. of Bonita Blvd.	03/08/11	24-HR	0	0	7,956	6,786	7,193	11:45 AM	667	339	328	9.3%	50.8%	3:00 PM	624	320	304	8.7%	51.3%	4	35	--	--
176	S. Morse Blvd	200' S. of Bonita Blvd	03/08/11	24-HR	0	0	0	7,339	7,622	11:45 AM	735	371	364	9.6%	50.5%	3:00 PM	680	349	331	8.9%	51.3%	4	35	--	--

**Sumter County Annual Traffic Counts
2011 Volumes Summary**

Sta ID	Street	Location Description	Start Date	Duration	ADT					A.M. Peak Hour					P.M. Peak Hour					# of Lanes	Posted Speed	Golf Cart			
					2007	2008	2009	2010	2011	Time	Total	NB/EB	SB/WB	'K'	'D'	Time	Total	NB/EB	SB/WB			'K'	'D'	2010	2011
179	S. Morse Blvd	200' N. of S. Odell Circle	03/08/11	24-HR	0	0	0	7,339	7,593	11:45 AM	737	366	371	9.7%	50.3%	3:00 PM	688	351	337	9.1%	51.0%	4	35	--	--
182	S.Morse Blvd.	200' S. of S. Odell Circle	03/30/11	24-HR	0	0	0	12,365	12,830	11:30 AM	1,321	664	657	10.3%	50.3%	3:00 PM	1,240	731	509	9.7%	59.0%	4	35	--	--
185	Belvedere Blvd.	200' S. of C-466E	04/12/11	24-HR	9,207	8,170	9,044	11,141	8,609	11:15 AM	801	359	442	9.3%	55.2%	3:00 PM	754	352	402	8.8%	53.3%	2	30	102	3,838
187	Belvedere Blvd.	200' W. of Buena Vista Blvd	04/26/11	24-HR	0	3,764	8,698	8,967	4,946	11:15 AM	452	258	194	9.1%	57.1%	3:00 PM	398	206	192	8.0%	51.8%	2	30	2,462	3,527
190	Rainey Trail	200' W. of Buena Vista Blvd.	03/08/11	24-HR	0	4,092	4,081	4,451	4,819	8:45 AM	430	243	187	8.9%	56.5%	3:00 PM	377	183	194	7.8%	51.5%	2	35	--	--
192	Churchill Downs	200' W of Lynn Haven Lane	05/04/11	24-HR	0	1,773	1,983	2,351	1,366	8:15 AM	122	58	64	8.9%	52.5%	3:00 PM	105	49	56	7.7%	53.3%	2	25	455	588
195	Churchill Downs	200' W of Belvedere Blvd	04/26/11	24-HR	0	2,606	3,042	3,368	2,044	11:30 AM	187	79	108	9.1%	57.8%	3:00 PM	179	80	99	8.8%	55.3%	2	25	811	1,099
198	Canal St	200' S of Stillwater Trl	05/04/11	24-HR	0	0	5,648	6,248	3,982	10:30 AM	339	201	138	8.5%	59.3%	3:00 PM	329	143	186	8.3%	56.5%	3	38	1,289	2,201
201	Canal St	200' N of N. Odell Circle	04/12/11	24-HR	0	0	0	4,911	3,343	11:00 AM	295	167	128	8.8%	56.6%	3:15 PM	272	126	146	8.1%	53.7%	3	30	1,287	2,526
204	Canal St	200' S. of N. Odell Circle	04/12/11	24-HR	0	0	0	7,572	5,292	11:30 AM	484	254	230	9.1%	52.5%	3:30 PM	421	211	210	8.0%	50.1%	2	30	1,848	3,414
207	Canal St	200' N. of Bonita Blvd	04/12/11	24-HR	0	0	0	5,651	3,367	9:45 AM	287	146	141	8.5%	50.9%	3:15 PM	236	132	104	7.0%	55.9%	3	20	1,412	2,649
210	Canal St	200' S. of Bonita Blvd	04/12/11	24-HR	0	0	0	4,990	3,950	11:45 AM	355	170	185	9.0%	52.1%	3:00 PM	286	142	144	7.2%	50.3%	4	20	1,394	2,746
213	Canal St	200' N. of S. Odell Circle	04/05/11	24-HR	0	0	0	5,389	3,473	11:30 AM	320	157	163	9.2%	50.9%	3:00 PM	287	143	144	8.3%	50.2%	2	20	1,323	1,658
216	Canal St	200' S. of S. Odell Circle	04/05/11	24-HR	0	0	0	3,770	2,292	11:00 AM	223	124	99	9.7%	55.6%	3:00 PM	197	119	78	8.6%	60.6%	2	20	752	738
219	Mariposa Way	200' West of S. Morse Blvd	03/22/11	24-HR	0	1,545	907	631	1,017	10:45 AM	129	94	35	12.7%	72.9%	3:00 PM	93	66	27	9.1%	71.0%	2	98	--	--
220	Mariposa Way	100' S. of C-466E	03/22/11	24-HR	0	621	990	631	731	7:30 AM	89	13	76	12.2%	85.4%	3:00 PM	74	20	54	10.1%	73.0%	2	98	--	--
222	Odell Circle	200' E of Buena Vista Blvd N. End	04/26/11	24-HR	0	3,458	5,381	5,032	3,261	11:45 AM	307	157	150	9.4%	51.1%	3:00 PM	281	142	139	8.6%	50.5%	3	30	1,173	2,211
225	Odell Circle	200' W. of Canal St	04/26/11	24-HR	0	3,950	5,628	13,114	3,417	11:45 AM	308	152	156	9.0%	50.6%	3:00 PM	290	142	148	8.5%	51.0%	2	30	1,192	2,159
228	Odell Circle	200' W. of S. Morse Blvd	04/26/11	24-HR	0	0	0	5,686	2,725	11:45 AM	254	87	167	9.3%	65.7%	3:15 PM	223	65	158	8.2%	70.9%	2	30	1,332	1,786
231	Odell Circle	200' E of S. Morse Blvd gate (N. end)	03/30/11	24-HR	0	4,779	6,432	3,389	4,468	11:15 AM	361	154	207	8.1%	57.3%	3:15 PM	453	279	174	10.1%	61.6%	4	30	1,230	2,177
234	Odell Circle	200' E of S Morse Blvd gate (S. end)	04/26/11	24-HR	0	4,779	6,432	7,911	4,732	9:30 AM	436	233	203	9.2%	53.4%	3:00 PM	361	167	194	7.6%	53.7%	3	30	1,649	2,747
237	Odell Circle	200' W of S Morse Blvd gate (S. end)	04/26/11	24-HR	0	3,431	5,937	7,695	4,309	9:45 AM	428	213	215	9.9%	50.2%	3:15 PM	366	210	156	8.5%	57.4%	2	30	1,724	3,182
240	Odell Circle	200' E. of Canal St	03/30/11	24-HR	0	0	0	7,197	4,695	11:00 AM	477	242	235	10.2%	50.7%	3:00 PM	491	227	264	10.5%	53.8%	2	20	1,714	3,891
243	Odell Circle	200' W. of Canal St	04/12/11	24-HR	0	3,950	5,628	13,114	4,719	11:00 AM	406	208	198	8.6%	51.2%	4:45 PM	395	195	200	8.4%	50.6%	2	30	1,573	3,336
246	Odell Circle	200' E. of S. Buena Vista Blvd	04/26/11	24-HR	0	0	0	5,574	3,914	11:30 AM	374	166	208	9.6%	55.6%	3:00 PM	315	167	148	8.0%	53.0%	3	30	1,240	2,534
249	Bailey Trail	200' W of S Buena Vista Blvd (N. end)	04/26/11	24-HR	0	4,963	2,898	8,710	6,658	11:45 AM	663	424	239	10.0%	64.0%	3:00 PM	515	318	197	7.7%	61.7%	3	30	1,863	2,944
252	Bailey Trail	200 N of St. Charles Place	03/30/11	24-HR	0	2,562	3,210	5,083	6,608	11:15 AM	637	328	309	9.6%	51.5%	3:00 PM	659	271	388	10.0%	58.9%	2	30	1,129	3,353
255	Bailey Trail	200' S of St. Charles Place	03/30/11	24-HR	0	1,038	2,011	3,383	2,659	11:45 AM	257	122	135	9.7%	52.5%	3:00 PM	301	162	139	11.3%	53.8%	2	20	643	1,479
258	Bailey Trail	200' W of S. Buena Vista Blvd (S. End)	04/12/11	24-HR	0	1,336	6,638	4,282	3,295	11:15 AM	308	150	158	9.3%	51.3%	3:00 PM	241	102	139	7.3%	57.7%	4	20	886	1,748
261	Stillwater Trail	200' E of S. Buena Vista Blvd	04/12/11	24-HR	0	6,177	6,322	6,746	7,892	10:45 AM	753	391	362	9.5%	51.9%	3:00 PM	628	291	337	8.0%	53.7%	4	35	55	6,563
264	Stillwater Trail	200' W of S. Morse Blvd	04/12/11	24-HR	0	6,237	6,635	7,367	8,113	11:00 AM	775	396	379	9.6%	51.1%	3:30 PM	640	265	375	7.9%	58.6%	4	20	56	1,057
267	Stillwater Trail	200' E. of S. Morse Blvd gate	04/12/11	24-HR	0	0	0	5,348	4,714	10:45 AM	452	202	250	9.6%	55.3%	3:00 PM	397	226	171	8.4%	56.9%	2	20	1,041	1,876
270	Stillwater Trail	200' E. of Odell Circle	04/05/11	24-HR	0	0	3,487	3,759	2,697	11:45 AM	260	121	139	9.6%	53.5%	3:00 PM	230	114	116	8.5%	50.4%	2	20	999	1,059
273	C-101	100' S. of Woodridge Dr	03/22/11	48-HR	0	0	0	0	5,650	11:15 AM	451	217	234	8.0%	51.9%	3:00 PM	500	276	224	8.8%	55.2%	5	35	--	--

**Sumter County Annual Traffic Counts
2011 Volumes Summary**

Sta ID	Street	Location Description	Start Date	Duration	ADT					A.M. Peak Hour					P.M. Peak Hour					# of Lanes	Posted Speed	Golf Cart			
					2007	2008	2009	2010	2011	Time	Total	NB/EB	SB/WB	'K'	'D'	Time	Total	NB/EB	SB/WB			'K'	'D'	2010	2011
274	C-101	600' N. of Woodridge Dr	03/22/11	48-HR	0	0	0	0	2,652	7:00 AM	295	102	193	11.1%	65.5%	3:00 PM	239	150	89	9.0%	62.8%	2	35	--	--
275	C-100	150' S. of C-466E	04/05/11	48-HR	0	0	0	0	1,191	6:45 AM	122	90	32	10.2%	74.1%	4:30 PM	111	38	73	9.3%	65.8%	2	35	--	--
276	C-103	200' N of Woodridge Dr	03/22/11	48-HR	0	0	0	0	1,577	7:00 AM	176	53	123	11.1%	70.0%	3:00 PM	152	76	76	9.6%	50.2%	2	35	--	--
278	C-103	200' N of Wal Mart N.B.	03/22/11	48-HR	0	0	0	0	2,170	7:15 AM	215	86	129	9.9%	60.0%	3:00 PM	182	81	101	8.4%	55.6%	4	35	--	--
281	C-616	200' S. of C-48W	04/05/11	48-HR	0	0	0	3,381	3,163	7:15 AM	243	142	101	7.7%	58.5%	4:45 PM	301	140	161	9.5%	53.6%	2	45	--	--
283	S. Buena Vista	200' S. of Prof. Plaza	03/08/11	24-HR	17,689	16,212	16,022	17,766	16,912	10:30 AM	1,559	813	746	9.2%	52.1%	3:00 PM	1,459	698	761	8.6%	52.2%	4	35	--	--
286	S. Buena Vista	200' S of Tall Trees Lane	03/08/11	24-HR	0	0	16,418	18,251	18,975	11:00 AM	1,720	889	831	9.1%	51.7%	3:00 PM	1,679	770	909	8.8%	54.1%	4	35	--	--
289	S. Buena Vista	200' N of Belvidere Blvd.	03/08/11	24-HR	0	0	16,418	0	19,099	11:00 AM	1,746	894	852	9.1%	51.2%	3:00 PM	1,698	774	924	8.9%	54.4%	4	35	--	--
292	S. Buena Vista	200' S of Belvidere Blvd.	03/08/11	24-HR	0	0	15,627	18,237	19,153	11:00 AM	1,723	837	886	9.0%	51.4%	3:00 PM	1,697	765	932	8.9%	54.9%	4	35	--	--
295	S. Buena Vista	200' S of Rainey Trl.	03/08/11	24-HR	0	0	17,046	19,818	21,221	11:00 AM	1,924	939	985	9.1%	51.2%	3:00 PM	1,863	866	997	8.8%	53.5%	4	35	--	--
299	S. Buena Vista	200' N of Stillwater Trl.	03/08/11	24-HR	0	0	13,132	13,917	16,395	11:00 AM	1,513	765	748	9.2%	50.6%	3:00 PM	1,462	725	737	8.9%	50.4%	4	35	--	--
302	S. Buena Vista	300' S of Stillwater Trl.	05/04/11	24-HR	0	0	12,931	7,314	15,002	11:45 AM	1,380	691	689	9.2%	50.1%	3:00 PM	1,150	519	631	7.7%	54.9%	4	35	--	--
305	S. Buena Vista	200' S. of N. Bailey Trail S. End	03/08/11	24-HR	4,856	5,908	6,104	6,731	9,695	11:15 AM	750	375	375	7.7%	50.0%	3:00 PM	795	428	367	8.2%	53.8%	4	35	--	--
308	S. Buena Vista	1320' S of St. Charles Place	03/08/11	24-HR	0	0	4,184	4,744	6,460	11:45 AM	603	275	328	9.3%	54.4%	3:00 PM	580	335	245	9.0%	57.8%	4	35	--	--
311	S. Buena Vista	300' S of S. Bailey Trail	04/12/11	24-HR	0	0	3,064	0	5,672	9:45 AM	505	201	304	8.9%	60.2%	4:15 PM	459	260	199	8.1%	56.6%	4	35	--	--
314	S. Buena Vista	300' S. of Turtle Mound Path	03/08/11	24-HR	0	0	0	5,248	7,935	11:45 AM	733	348	385	9.2%	52.5%	3:00 PM	646	320	326	8.1%	50.5%	4	35	--	--
317	Stillwater Trail	200' E. of Odell Circle	04/05/11	48-HR	0	0	3,487	3,759	2,697	11:45 AM	260	121	139	9.6%	53.5%	3:00 PM	230	114	116	8.5%	50.4%	2	20	--	--
320	Canal St.	200' N of Odell Circle	04/05/11	48-HR	0	0	4,538	0	3,473	11:30 AM	320	157	163	9.2%	50.9%	3:00 PM	287	143	144	8.3%	50.2%	2	20	--	--
323	Canal St.	200' S of Odell Circle	04/05/11	48-HR	0	0	7,802	0	2,292	11:00 AM	223	124	99	9.7%	55.6%	3:00 PM	197	119	78	8.6%	60.6%	2	20	--	--
326	Bonita Blvd.	200' E. of Buena Vista Blvd.	03/30/11	24-HR	0	0	2,768	3,109	2,769	11:45 AM	218	120	98	7.9%	55.0%	3:00 PM	326	150	176	11.8%	54.0%	3	20	540	1,050
329	Bonita Blvd.	200' W. of Morse Blvd.	04/12/11	24-HR	0	0	3,017	3,414	3,056	11:00 AM	284	167	117	9.3%	58.8%	3:00 PM	250	120	130	8.2%	52.0%	4	20	346	561
330	C-727	300' North of SR 50	03/22/11	72-HR	0	0	0	0	177	10:15 AM	18	8	10	10.2%	55.6%	6:15 PM	21	13	8	11.6%	63.4%	2	35	--	--
332	C-721	300' East of C-471	03/22/11	72-HR	0	0	0	0	686	7:15 AM	58	14	44	8.4%	76.5%	4:30 PM	65	36	29	9.3%	55.5%	2	35	--	--
334	C-747	300' North of C-730	03/29/11	48-HR	0	0	0	0	1,164	8:00 AM	168	92	76	14.4%	54.8%	3:00 PM	147	77	70	12.5%	52.4%	2	40	--	--
336	C-747	300' South of C-730	03/29/11	48-HR	0	0	0	0	683	11:30 AM	55	29	26	8.0%	52.3%	4:15 PM	71	24	47	10.3%	66.7%	2	40	--	--
338	C-740	300' East of C-749	03/29/11	48-HR	0	0	0	0	717	11:45 AM	75	34	41	10.4%	54.4%	3:30 PM	76	33	43	10.5%	56.3%	2	30	--	--
340	C-229	300' North of SR 44	03/22/11	24-HR	0	0	0	0	2,138	7:00 AM	170	64	106	8.0%	62.4%	4:00 PM	193	112	81	9.0%	58.0%	2	45	--	--
342	C-229	300' South of C-228	03/22/11	24-HR	0	0	0	0	2,039	7:00 AM	168	67	101	8.2%	60.1%	4:00 PM	180	106	74	8.8%	58.9%	2	45	--	--
344	C-237	300' South of C-466	03/22/11	24-HR	0	0	0	0	386	11:30 AM	40	15	25	10.4%	62.5%	4:30 PM	34	18	16	8.8%	52.9%	2	40	--	--
346	C-673	300' West of Cemex Rock Mine	03/22/11	72-HR	0	0	0	0	1,615	10:45 AM	143	68	75	8.9%	52.4%	3:00 PM	108	49	59	6.6%	54.7%	2	45	--	--