

# *2016 Lake County Annual Traffic Counts*



# LAKE COUNTY

---

# FLORIDA

Lake County Public Works  
Engineering Division  
350 N. Sinclair Ave.  
Tavares, Florida 32778

## 2016 Lake County Traffic Counts for County Roads



Lake County Public Works Building



Typical view of Lake County Annual Traffic Count Station setup

Lake County Public Works  
Engineering Division  
350 N. Sinclair Ave.  
Tavares, Florida 32778  
Phone (352) 253-6000

# 2016 Lake County Traffic Counts for County Roads

## **Introduction**

Lake County Public Works Engineering Division is pleased to provide to all the Local Governments and Interested Others, the 2016 Annual Daily Traffic Counts for all of the Lake County maintained major roads. The 2016 Annual Daily Traffic Count Program is one of the responsibilities of the Lake County Public Works Engineering Division.

The Lake County Public Works Traffic Count Program is the enumeration of vehicular volumes taken at more than 290 count stations on roads within the County. Count reports produced by this program reflect daily and hourly volumes. Traffic counts are used by planners and engineers as a basic scale of comparison indicating the relative importance of various links in a road system. The traffic counts are also used to determine the Operating Level of Service on a given section of roadway.

The next series of pages are Traffic Count Station Location Maps and Traffic Tables. Every effort has been made to make the 2016 Annual Daily Traffic Counts Book as accurate as possible. Any errors or omissions should be brought to the attention of the Lake County Public Works staff.

The 2016 Annual Traffic Count Book is a public document. Copies will be made available for public inspection at Lake County Public Works Department Offices, 350 N. Sinclair Ave., Florida. The 2016 Traffic Count Book will be provided to interested parties on request. Cost for reproduction may be charged, in accordance with Lake County policies.

Lake County Public Works wishes to acknowledge the Lake-Sumter Metropolitan Planning Organization for their contributions to the 2016 Lake County Traffic Count Program.

The 2016 Annual Lake County Traffic Counts booklet is available for download free on our website:

[http://www.lakecountyfl.gov/departments/public\\_works/engineering/traffic\\_count.aspx](http://www.lakecountyfl.gov/departments/public_works/engineering/traffic_count.aspx)



# 2 0 1 6 L A K E C O U N T Y

## A N N U A L T R A F F I C C O U N T S

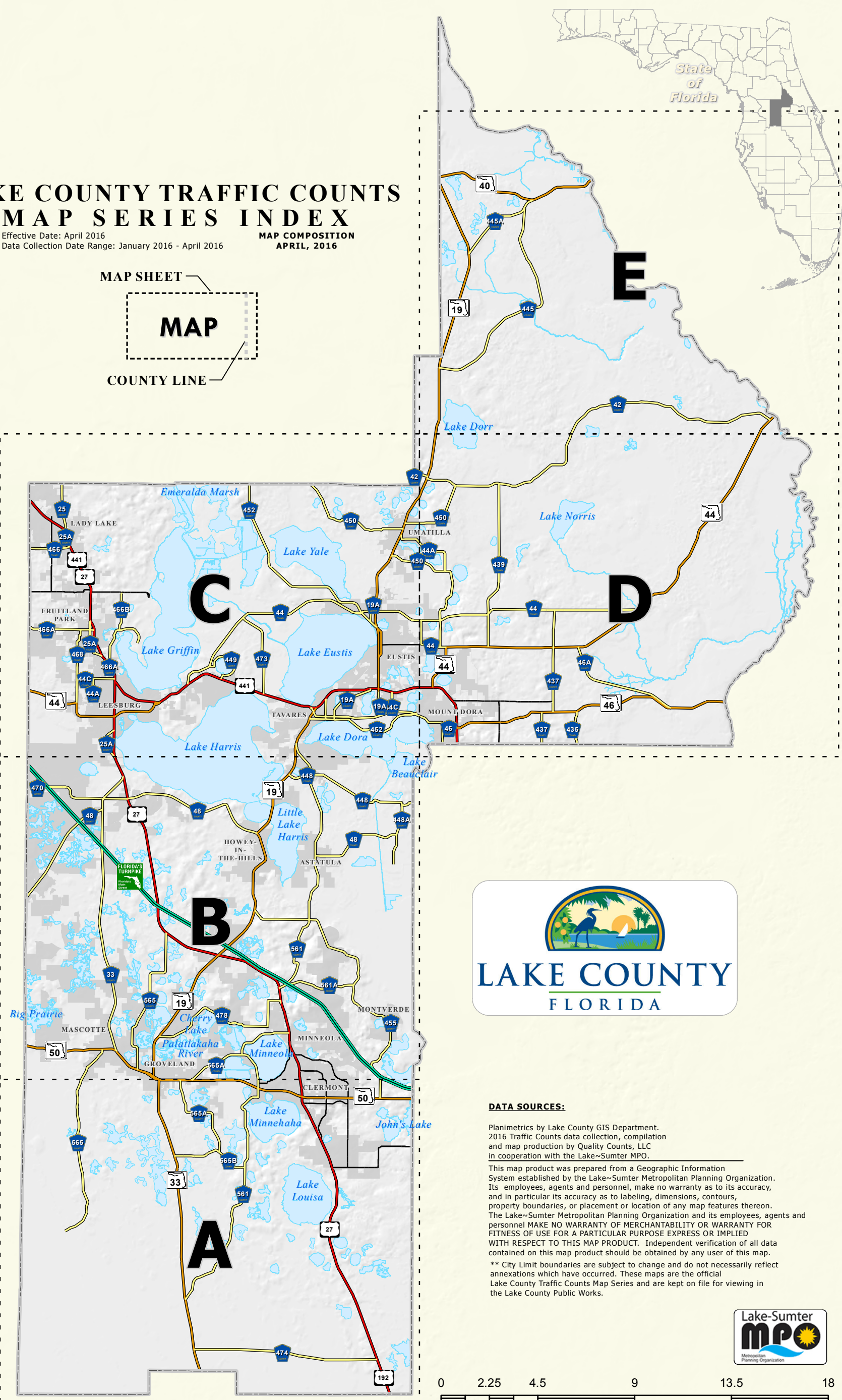
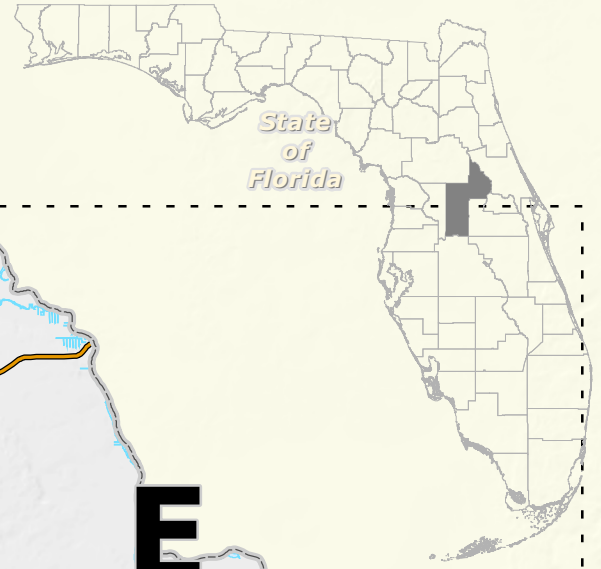
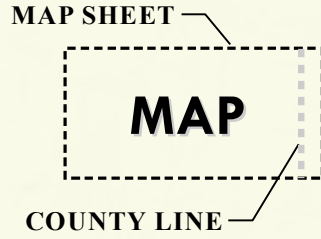
M  
P  
O  
T  
R  
A  
F  
F  
I  
C  
C  
O  
U  
N  
T  
S  
P  
R  
O  
G  
R  
A  
M



### LAKE COUNTY TRAFFIC COUNTS MAP SERIES INDEX

Effective Date: April 2016  
Data Collection Date Range: January 2016 - April 2016

MAP COMPOSITION  
APRIL, 2016

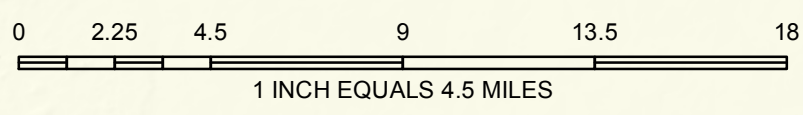


**DATA SOURCES:**

Planimetrics by Lake County GIS Department.  
2016 Traffic Counts data collection, compilation and map production by Quality Counts, LLC in cooperation with the Lake~Sumter MPO.

This map product was prepared from a Geographic Information System established by the Lake~Sumter Metropolitan Planning Organization. Its employees, agents and personnel, make no warranty as to its accuracy, and in particular its accuracy as to labeling, dimensions, contours, property boundaries, or placement or location of any map features thereon. The Lake~Sumter Metropolitan Planning Organization and its employees, agents and personnel MAKE NO WARRANTY OF MERCHANTABILITY OR WARRANTY FOR FITNESS OF USE FOR A PARTICULAR PURPOSE EXPRESS OR IMPLIED WITH RESPECT TO THIS MAP PRODUCT. Independent verification of all data contained on this map product should be obtained by any user of this map.

\*\* City Limit boundaries are subject to change and do not necessarily reflect annexations which have occurred. These maps are the official Lake County Traffic Counts Map Series and are kept on file for viewing in the Lake County Public Works.



# 2016 LAKE COUNTY ANNUAL TRAFFIC COUNTS MAP SERIES



LAKE COUNTY FLORIDA

**LEGEND**

- Station ID
- Traffic Count Station Location
- County Road
- State Road
- US Highway
- Interstate
- Turnpike
- Active Railroad
- Water Body
- County Boundary

**MAP SHEET**  
COUNTY LINE

**Incorporated Area**

	Astatula		Leesburg
	Clermont		Mascotte
	Eustis		Minneola
	Fruitland Park		Montverde
	Groveland		Mount Dora
	Howey-In-The-Hills		Tavares
	Lady Lake		Umatilla

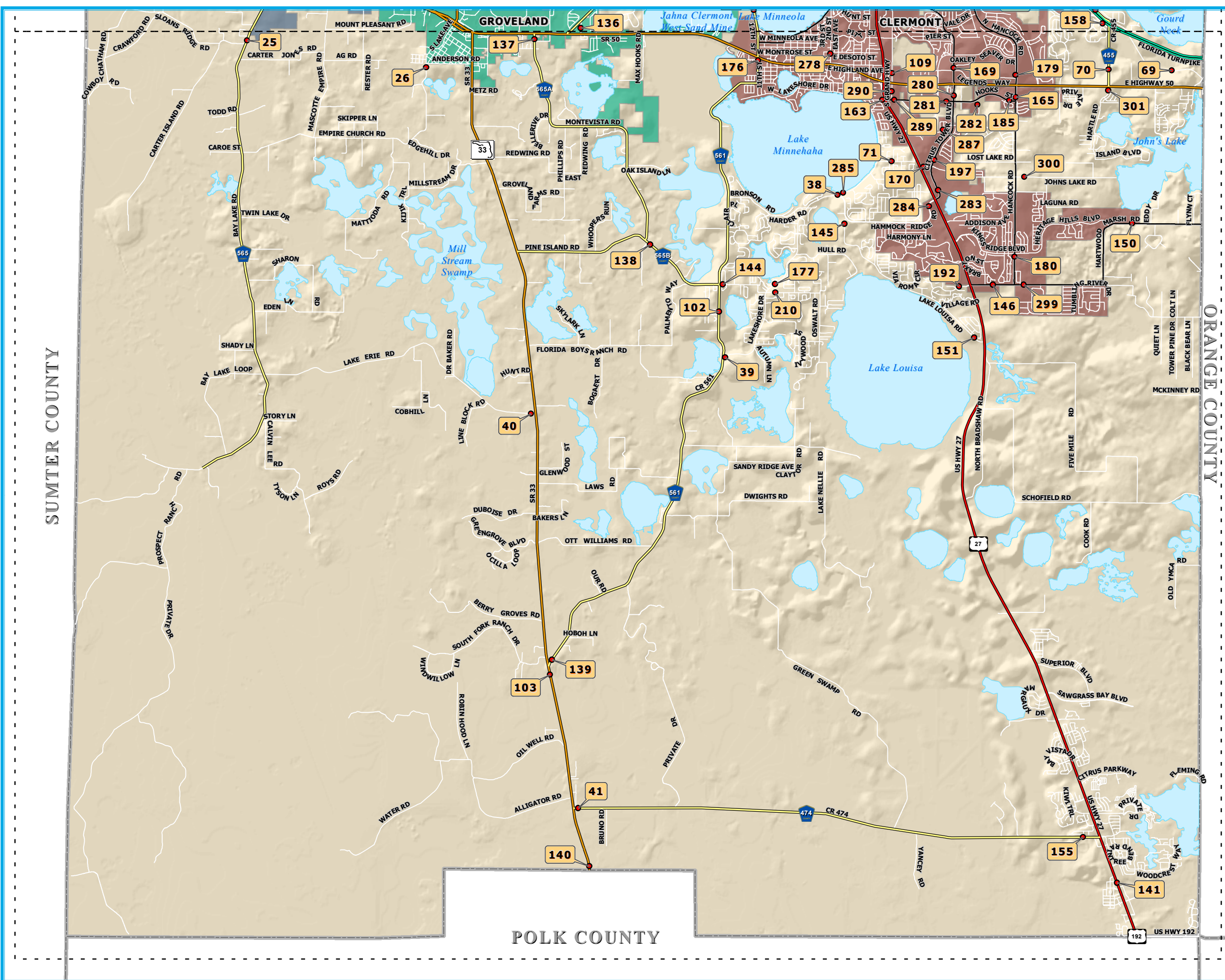
**DATA SOURCES:**  
 Planimetrics by Lake County GIS Department.  
 2016 Traffic Counts data collection, compilation and map production by Quality Counts, LLC in cooperation with the Lake-Sumter MPO.

This map product was prepared from a Geographic Information System established by the Lake-Sumter Metropolitan Planning Organization. Its employees, agents and personnel, make no warranty as to its accuracy, and in particular its accuracy as to labeling, dimensions, contours, property boundaries, or placement or location of any map features thereon. The Lake-Sumter Metropolitan Planning Organization and its employees, agents and personnel MAKE NO WARRANTY OF MERCHANTABILITY OR WARRANTY FOR FITNESS OF USE FOR A PARTICULAR PURPOSE EXPRESS OR IMPLIED WITH RESPECT TO THIS MAP PRODUCT. Independent verification of all data contained on this map product should be obtained by any user of this map.

**MAP SERIES INDEX**

**MAP SHEET A**

North arrow and Lake-Sumter MPO logo.



# 2016 LAKE COUNTY ANNUAL TRAFFIC COUNTS MAP SERIES



LAKE COUNTY FLORIDA

**LEGEND**

- Station ID
- Traffic Count Station Location
- County Road
- State Road
- US Highway
- Interstate
- Turnpike
- Active Railroad
- Water Body
- County Boundary

**MAP SHEET**  
COUNTY LINE

**Incorporated Area**

	Astatula		Leesburg
	Clermont		Mascotte
	Eustis		Minneola
	Fruitland Park		Montverde
	Groveland		Mount Dora
	Howey-In-The-Hills		Tavares
	Lady Lake		Umatilla

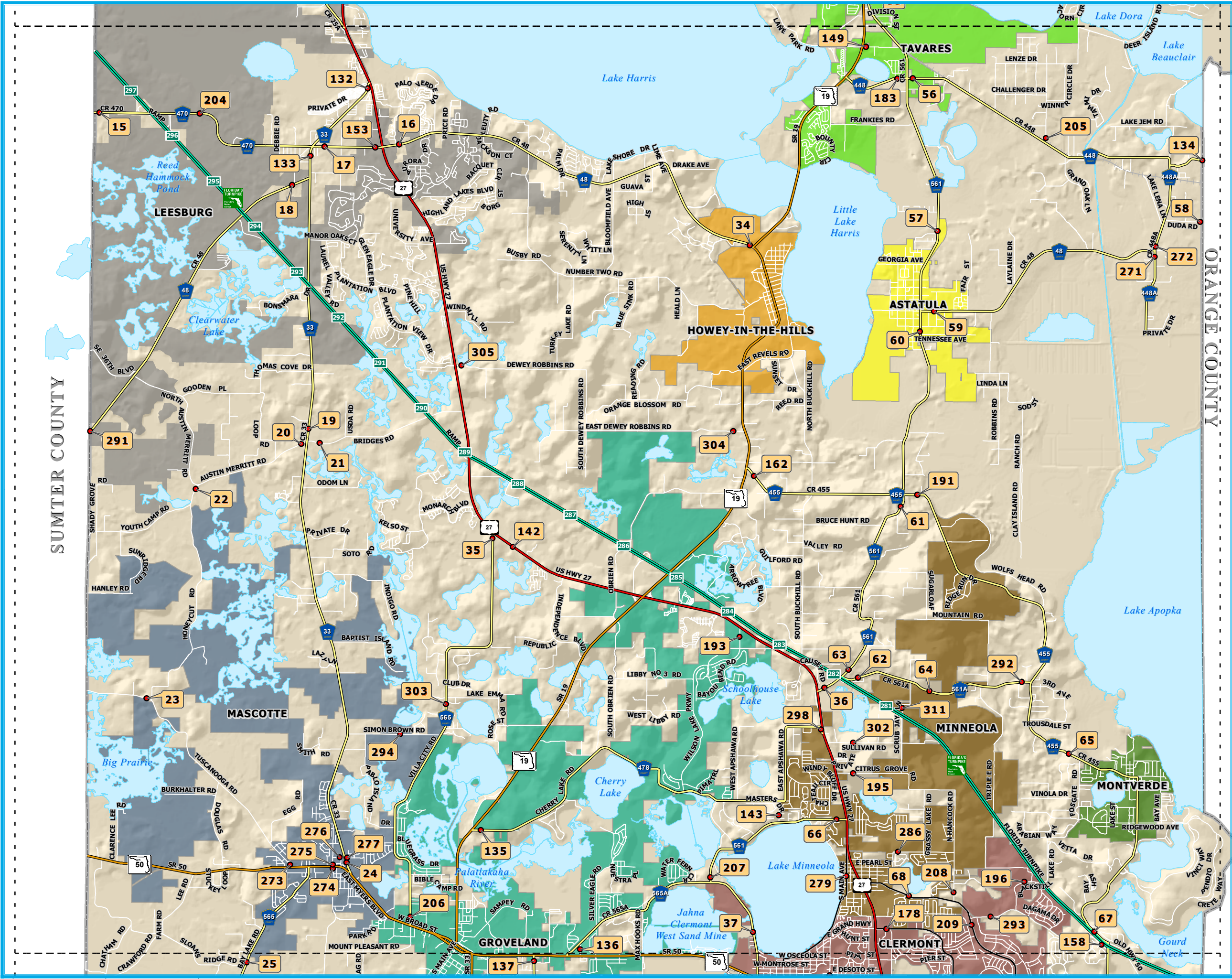
**DATA SOURCES:**  
Planimetrics by Lake County GIS Department.  
2016 Traffic Counts data collection, compilation and map production by Quality Counts, LLC in cooperation with the Lake-Sumter MPO.

This map product was prepared from a Geographic Information System established by the Lake-Sumter Metropolitan Planning Organization. Its employees, agents and personnel, make no warranty as to its accuracy, and in particular its accuracy as to labeling, dimensions, contours, property boundaries, or placement or location of any map features thereon. The Lake-Sumter Metropolitan Planning Organization and its employees, agents and personnel MAKE NO WARRANTY OF MERCHANTABILITY OR WARRANTY FOR FITNESS OF USE FOR A PARTICULAR PURPOSE EXPRESS OR IMPLIED WITH RESPECT TO THIS MAP PRODUCT. Independent verification of all data contained on this map product should be obtained by any user of this map.

**MAP SERIES INDEX**

**MAP SHEET B**

Lake-Sumter MPO Metropolitan Planning Organization



# 2016 LAKE COUNTY ANNUAL TRAFFIC COUNTS MAP SERIES



LAKE COUNTY FLORIDA

**LEGEND**

- Station ID
- Traffic Count Station Location
- County Road
- State Road
- US Highway
- Interstate
- Turnpike
- Active Railroad
- Water Body
- County Boundary

**Incorporated Area**

Astatula	Leesburg
Clermont	Mascotte
Eustis	Minneola
Fruitland Park	Montverde
Groveland	Mount Dora
Howey-In-The-Hills	Tavares
Lady Lake	Umatilla

**DATA SOURCES:**  
 Planimetrics by Lake County GIS Department.  
 2016 Traffic Counts data collection, compilation and map production by Quality Counts, LLC in cooperation with the Lake-Summer MPO.

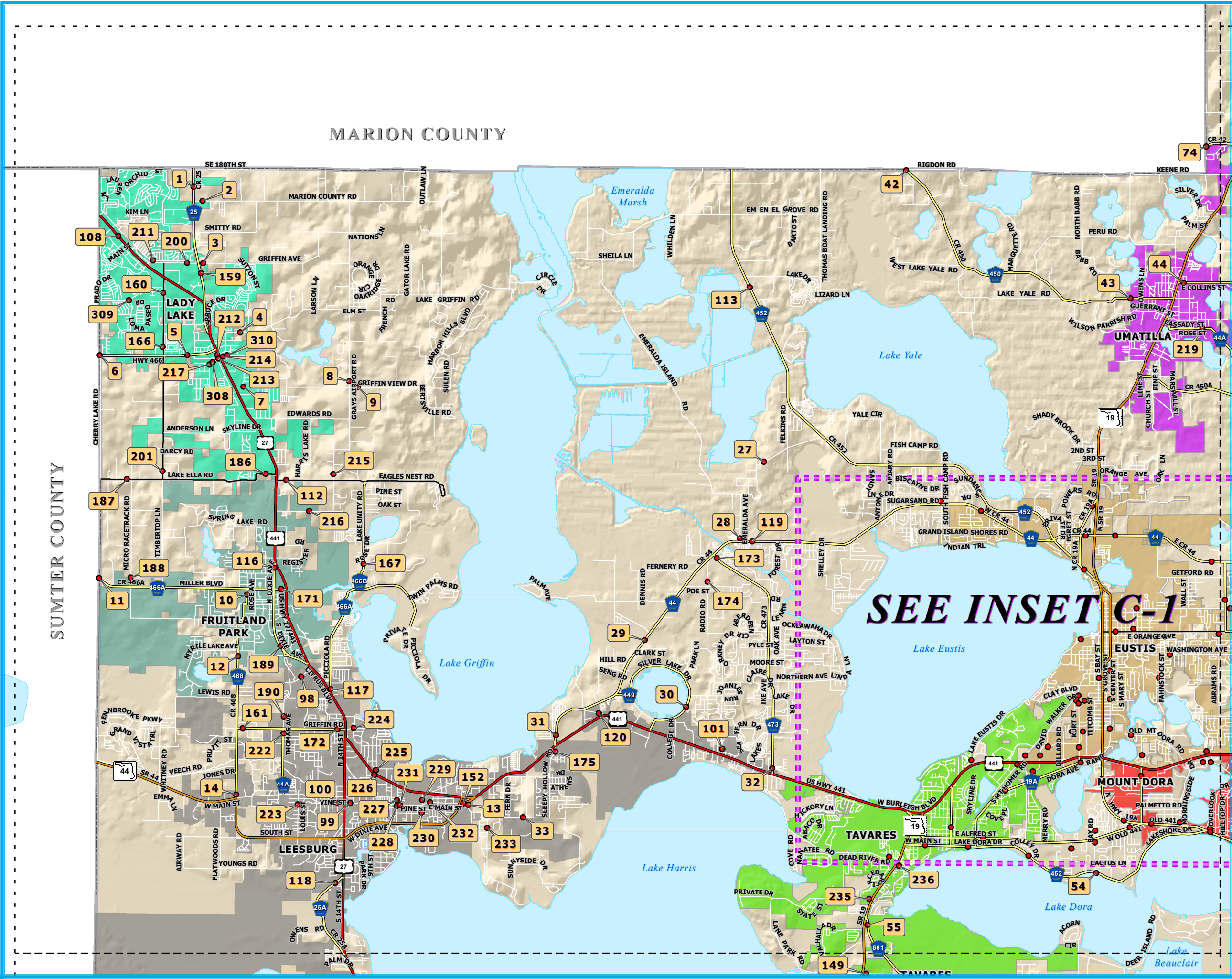
This map product was prepared from a Geographic Information System established by the Lake-Summer Metropolitan Planning Organization. Its employees, agents and personnel, make no warranty as to its accuracy, and in particular its accuracy as to labeling, dimensions, contours, property boundaries, or placement or location of any map features thereon. The Lake-Summer Metropolitan Planning Organization and its employees, agents and personnel MAKE NO WARRANTY OF MERCHANTABILITY OR WARRANTY FOR FITNESS OF USE FOR A PARTICULAR PURPOSE EXPRESS OR IMPLIED WITH RESPECT TO THIS MAP PRODUCT. Independent verification of all data contained on this map product should be obtained by any user of this map.

**MAP SERIES INDEX**

**MAP SHEET C**

MARION COUNTY

SUMTER COUNTY







# 2016 LAKE COUNTY ANNUAL TRAFFIC COUNTS MAP SERIES



LAKE COUNTY FLORIDA

**LEGEND**

- Station ID
- Traffic Count Station Location
- County Road
- State Road
- US Highway
- Interstate
- Turnpike
- Active Railroad
- Water Body
- County Boundary

**MAP SHEET**  
COUNTY LINE

**Incorporated Area**

	Astatula		Leesburg
	Clermont		Mascotte
	Eustis		Minneola
	Fruitland Park		Montverde
	Groveland		Mount Dora
	Howey-In-The-Hills		Tavares
	Lady Lake		Umatilla

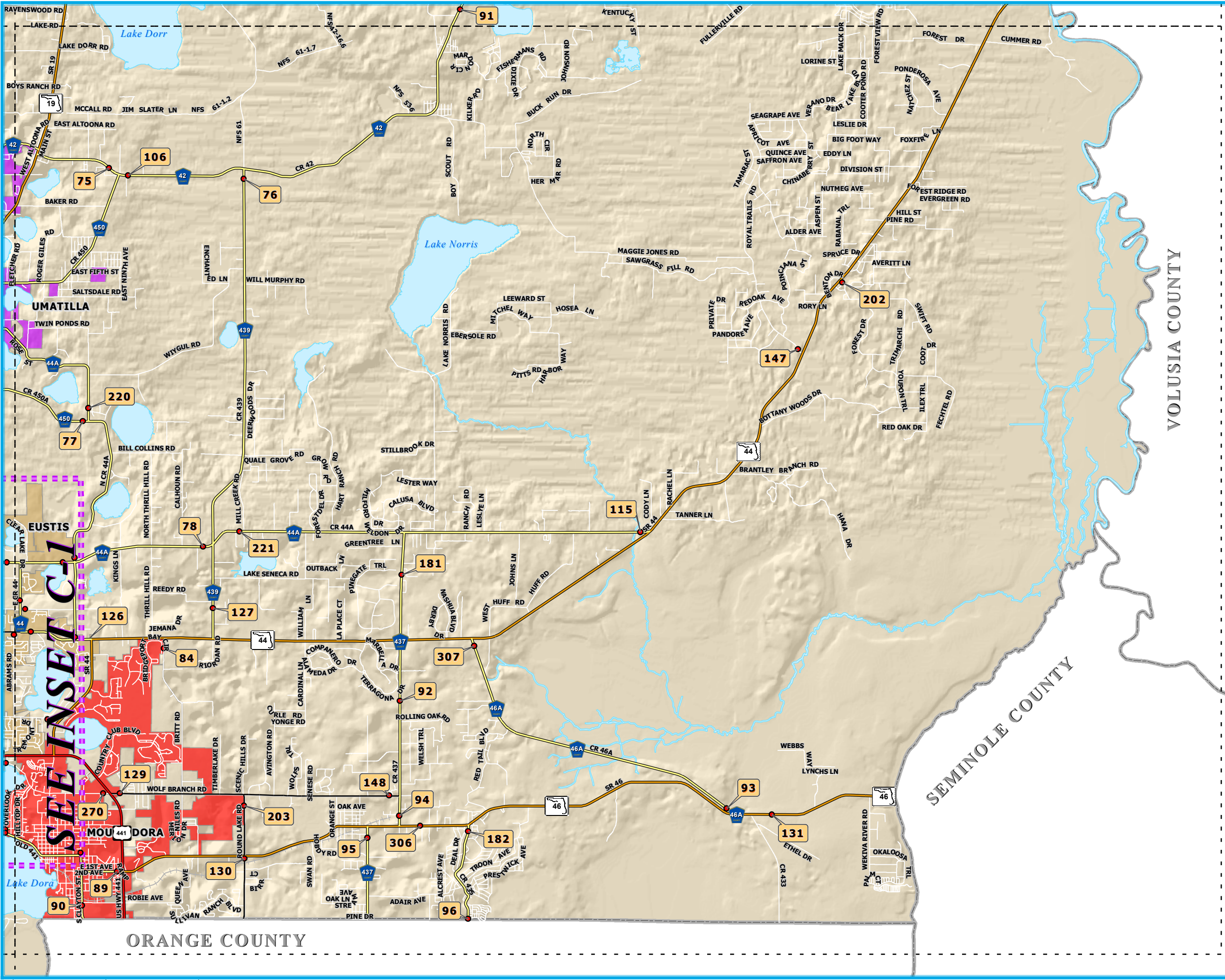
**DATA SOURCES:**  
Planimetrics by Lake County GIS Department.  
2016 Traffic Counts data collection, compilation and map production by Quality Counts, LLC in cooperation with the Lake-Sumter MPO.

This map product was prepared from a Geographic Information System established by the Lake-Sumter Metropolitan Planning Organization. Its employees, agents and personnel, make no warranty as to its accuracy, and in particular its accuracy as to labeling, dimensions, contours, property boundaries, or placement or location of any map features thereon. The Lake-Sumter Metropolitan Planning Organization and its employees, agents and personnel MAKE NO WARRANTY OF MERCHANTABILITY OR WARRANTY FOR FITNESS OF USE FOR A PARTICULAR PURPOSE EXPRESS OR IMPLIED WITH RESPECT TO THIS MAP PRODUCT. Independent verification of all data contained on this map product should be obtained by any user of this map.

**MAP SERIES INDEX**

**MAP SHEET D**

North arrow and Lake-Sumter MPO logo.



# 2016 LAKE COUNTY ANNUAL TRAFFIC COUNTS MAP SERIES



LAKE COUNTY FLORIDA

## LEGEND Station ID

- Traffic Count Station Location
- County Road
- State Road
- US Highway
- Interstate
- Turnpike
- Active Railroad
- Water Body
- County Boundary

MAP

MAP SHEET COUNTY LINE

## Incorporated Area

- |                    |            |
|--------------------|------------|
| Astatula           | Leesburg   |
| Clermont           | Mascotte   |
| Eustis             | Minneola   |
| Fruitland Park     | Montverde  |
| Groveland          | Mount Dora |
| Howey-In-The-Hills | Tavares    |
| Lady Lake          | Umatilla   |

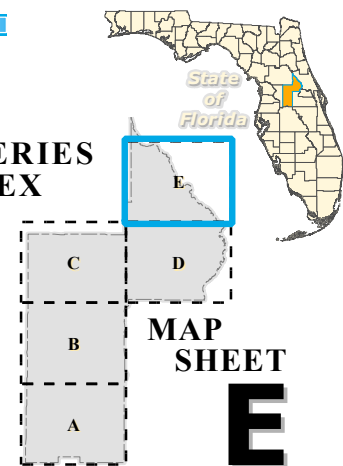
## DATA SOURCES:

Planimetrics by Lake County GIS Department.  
2016 Traffic Counts data collection, compilation and map production by Quality Counts, LLC in cooperation with the Lake-Sumter MPO.

This map product was prepared from a Geographic Information System established by the Lake-Sumter Metropolitan Planning Organization. Its employees, agents and personnel, make no warranty as to its accuracy, and in particular its accuracy as to labeling, dimensions, contours, property boundaries, or placement or location of any map features thereon. The Lake-Sumter Metropolitan Planning Organization and its employees, agents and personnel MAKE NO WARRANTY OF MERCHANTABILITY OR WARRANTY FOR FITNESS OF USE FOR A PARTICULAR PURPOSE EXPRESS OR IMPLIED WITH RESPECT TO THIS MAP PRODUCT. Independent verification of all data contained on this map product should be obtained by any user of this map.



## MAP SERIES INDEX



0 0.75 1.5 3 1 Inch equals 1.5 Miles

## 2016 Lake County Annual Traffic Counts

MAP STA #	ROAD NAME	LOCATION	Map Sheet	TMS ID	S E C	T W P	R N G	ANNUAL ADJUSTED DAILY TRAFFIC (AADT)					5-YEAR ANNUAL AVERAGE GROWTH RATE PERCENT	ADJUSTED PEAK HR VOLUME 2016	BEGIN PEAK HOUR 2016	ADJUSTED P.M. PEAK HOUR VOLUME 2016 (3-7 pm reported as 15:00-19:00)				
								2012	2013	2014	2015	2016				Total	NB/EB	SB/WB	Pk Dir	Time
1	C.R. 25	AT MARION CO LINE	C	366	5	18	24	8,123	7,034	8,608	9,609	7,584	-1.70%	789	15:45	789	481	309	NB	15:45
2	MARION COUNTY RD	0.15 Mi E OF C.R. 25	C	373	5	18	24	2,106	1,788	1,803	2,232	2,051	-0.66%	197	16:30	197	122	75	EB	16:30
3	GRIFFIN AV	0.05 Mi E OF C.R. 25	C	390	8	18	24	2,066	2,336	2,336	2,408	2,686	6.77%	273	14:30	262	152	110	EB	15:15
4	LAKE GRIFFIN RD	0.27 Mi W OF CAROLINA AV	C	744	16	18	24	3,085	2,869	3,027	3,234	3,060	-0.20%	279	16:45	279	191	88	EB	16:45
5	C.R. 466	0.10 Mi W OF CLAY AV	C	619	17	18	24	12,694	13,059	14,490	16,427	16,958	7.51%	1,581	15:00	1,581	845	736	EB	15:00
6	C.R. 466	AT SUMTER CO LINE	C	381	18	18	24	21,835	20,342	24,272	25,598	25,989	4.45%	2,389	15:00	2,389	1,220	1,169	EB	15:00
7	GRIFFIN VIEW DR	0.08 Mi E OF U.S. 27/U.S. 441	C	384	21	18	24	4,040	4,228	4,124	5,358	4,137	0.59%	328	16:30	328	209	119	EB	16:30
8	GRAYS AIRPORT RD	0.10 Mi N OF GRIFFIN VIEW DR	C	399	22	18	24	1,919	1,992	2,017	2,200	2,212	3.61%	205	16:30	205	115	90	NB	16:30
9	GRIFFIN VIEW DR	0.12 Mi E OF GRAYS AIRPORT RD	C	386	23	18	24	1,506	1,493	1,673	1,801	1,623	1.90%	140	14:15	128	39	88	EB	16:15
10	C.R. 468	0.04 Mi N OF BERCKMAN ST	C	305	4	19	24	3,490	3,276	3,216	5,105	3,113	-2.81%	280	17:00	280	127	153	SB	17:00
11	C.R. 466A	AT SUMTER CO LINE	C	689	6	19	24	11,669	13,504	15,281	17,819	17,820	11.17%	1,636	15:30	1,636	748	889	WB	15:30
12	C.R. 468	0.08 Mi S OF MYRTLE LAKE/URICK ST	C	303	9	19	24	6,259	5,992	5,781	6,037	5,484	-3.25%	473	7:30	462	215	246	NB	17:00
13	SUNNYSIDE DR	0.09 Mi S OF MAIN ST (S.R. 44)	C	751	25	19	24	3,204	3,400	3,467	3,326	3,363	1.22%	355	17:00	355	114	241	SB	17:00
14	C.R. 468	0.09 Mi N OF S.R. 44	C	302	28	19	24	7,446	7,375	6,667	5,158	7,071	-1.28%	611	7:30	597	321	276	NB	16:30
15	C.R. 470	0.06 Mi E OF SUMTER CO LINE	B	908	7	20	24	5,094	5,465	5,813	6,771	6,681	7.01%	638	7:15	524	217	307	EB	15:30
16	C.R. 48	0.25 Mi E OF U.S. 27	B	97	14	20	24	7,947	7,974	8,765	6,895	9,996	5.90%	838	15:45	838	424	414	EB	15:45
17	C.R. 48	0.18 Mi E OF C.R. 33	B	219	15	20	24	6,086	6,048	4,978	6,580	11,043	16.06%	975	15:30	975	439	537	WB	15:30
18	C.R. 48	0.12 Mi W OF C.R. 33	B	224	22	20	24	2,204	2,242	2,221	2,019	3,559	12.72%	299	10:15	259	124	135	WB	15:30
19	C.R. 33	0.06 Mi N OF AUSTIN MERRITT RD	B	231	10	21	24	3,355	3,444	3,259	2,766	4,144	5.42%	348	6:45	336	189	147	SB	16:15
20	AUSTIN MERRITT RD	0.07 Mi W OF C.R. 33	B	679	10	21	24	1,038	1,060	1,131	1,008	1,044	0.14%	105	15:45	105	52	53	WB	15:45
21	BRIDGES RD	0.08 Mi E OF C.R. 33	B	669	10	21	24	786	837	789	1,201	1,225	11.73%	115	15:45	115	49	66	WB	15:45
22	YOUTH CAMP RD	0.48 Mi W OF AUSTIN MERRITT RD	B	678	17	21	24	775	799	825	1,156	1,041	7.63%	101	16:00	101	39	61	WB	16:00
23	TUSCANOOGA RD	0.13 Mi W OF HONEYCUTT RD	B	101	31	21	24	397	458	503	527	473	4.52%	57	18:00	57	44	12	WB	18:00
24	C.R. 33	0.10 Mi N OF S.R. 50	B	235	14	22	24	4,470	4,337	3,937	5,006	4,345	-0.71%	397	16:45	397	208	189	SB	16:45
25	C.R. 565	0.08 Mi N OF SLOANS RIDGE RD	A	182	21	22	24	598	694	622	685	605	0.29%	54	7:30	51	21	30	SB	17:15
26	EMPIRE CHURCH RD	0.10 Mi S OF ANDERSON ST	A	187	25	22	24	1,137	1,341	1,162	1,335	1,199	1.34%	119	17:00	119	81	38	SB	17:00
27	GOOSE PRAIRIE RD	0.12 Mi W OF FELKINS RD	C	570	25	18	25	2,277	2,143	2,169	2,275	2,487	2.23%	244	16:45	244	166	78	WB	16:45
28	EMERALDA AV	0.05 Mi N OF C.R. 44	C	326	35	18	25	3,191	3,378	3,191	3,457	3,284	0.72%	319	16:30	319	217	102	NB	16:30
29	C.R. 44	0.10 Mi S OF TREASURE ISLAND RD	C	339	9	19	25	9,299	8,430	8,082	9,213	9,633	0.89%	855	7:15	801	564	237	NB	16:45
30	C.R. 449 (SILVER LAKE ROAD)	0.37 Mi S OF MORNINGSIDE DR	C	641	15	19	25	2,532	2,317	2,104	2,158	2,078	-4.81%	209	17:00	209	65	144	NB	17:00
31	C.R. 44	0.55 Mi N OF U.S. 441	C	329	20	19	25	8,877	9,819	9,885	10,604	10,903	5.27%	938	7:30	896	576	320	NB	16:30
32	C.R. 473	0.21 Mi N OF U.S. 441	C	826	24	19	25	12,939	12,696	13,030	12,622	13,313	0.71%	1,139	16:45	1,139	695	444	NB	16:45
33	SUNNYSIDE DR	0.04 Mi W OF TOMATO HILL RD	C	868	29	19	25	1,330	1,878	1,955	1,196	2,007	10.84%	214	17:00	214	71	143	EB	17:00
34	C.R. 48	0.18 Mi W OF S.R. 19	B	99	23	20	25	6,520	6,811	7,252	8,181	8,304	6.23%	781	15:30	781	361	420	EB	15:30
35	C.R. 565	0.07 Mi S OF U.S. 27	B	610	18	21	25	843	915	978	1,189	1,277	10.95%	120	16:45	120	42	79	SB	16:45
36	C.R. 561/C.R. 561A	0.09 Mi E OF U.S. 27	B	125	36	21	25	7,132	7,465	7,664	8,680	10,449	10.02%	1,116	16:45	1,116	643	474	EB	16:45
37	C.R. 561	0.16 Mi S OF BRIDGE #114046	B	781	23	22	25	2,746	2,483	2,886	3,073	3,272	4.48%	308	16:15	308	140	168	NB	16:15
38	LAKESHORE DR (CLERMONT)	0.30 Mi W OF HAMMOCK RIDGE RD	A	915	1	23	25	UC	13,226	11,897	17,097	15,764	4.49%	1,406	17:15	1,406	469	937	WB	17:15
39	LAKESHORE DR (CLERMONT)	0.06 Mi E OF C.R. 561	A	165	14	23	25	1,837	1,930	1,942	4,349	2,256	5.27%	196	7:30	190	86	104	WB	16:30
40	LAKE ERIE RD	0.06 Mi W OF S.R. 33	A	361	20	23	25	655	642	626	713	658	0.09%	62	7:45	61	17	44	WB	16:30
41	C.R. 474	0.07 Mi E OF S.R. 33	A	94	21	24	25	2,404	2,492	2,702	3,853	4,054	13.95%	315	6:00	248	155	93	WB	16:30
42	C.R. 450	0.18 Mi W OF ST THOMAS AV, AT MARION CO	C	76	5	18	26	2,310	1,467	1,414	1,905	1,557	-9.40%	147	16:45	147	71	76	EB	16:45
43	C.R. 450	0.06 Mi W OF OWENS LN	C	77	11	18	26	1,390	2,151	2,098	2,454	2,294	13.35%	209	15:45	209	107	102	WB	15:45
44	C.R. 450	0.08 Mi E OF SR 19	C	78	12	18	26	4,753	4,524	4,527	6,837	4,166	-3.24%	393	17:30	393	250	143	EB	17:30
45	C.R. 44	0.39 Mi W OF GRAND ISLAND SHORES RD	C-1	341	33	18	26	11,161	12,583	11,029	12,045	13,739	5.33%	1,159	17:00	1,159	641	518	EB	17:00
46	C.R. 452	0.16 Mi N OF C.R. 44	C-1	318	34	18	26	9,128	14,189	7,681	8,414	13,836	10.96%	1,221	16:30	1,221	857	364	EB	16:30
47	C.R. 44	0.14 Mi E OF SR 19	C-1	814	35	18	26	9,407	12,943	9,799	10,294	12,183	6.68%	1,015	16:45	1,015	511	504	EB	16:45
48	C.R. 44	0.15 Mi W OF SR 19	C-1	735	35	18	26	10,725	12,545	12,170	12,274	12,901	4.73%	1,198	16:45	1,198	614	584	EB	16:45

## 2016 Lake County Annual Traffic Counts

MAP STA #	ROAD NAME	LOCATION	Map Sheet	TMS ID	S E C	T W P	R N G	ANNUAL ADJUSTED DAILY TRAFFIC (AADT)					5-YEAR ANNUAL AVERAGE GROWTH RATE PERCENT	ADJUSTED PEAK HR VOLUME 2016	BEGIN PEAK HOUR 2016	ADJUSTED P.M. PEAK HOUR VOLUME 2016 (3-7 pm reported as 15:00-19:00)				
								2012	2013	2014	2015	2016				Total	NB/EB	SB/WB	Pk Dir	Time
49	LAKESHORE DR (EUSTIS)	0.09 Mi E OF KING ST	C-1	378	11	19	26	5,037	5,043	5,171	3,440	5,273	1.15%	479	7:30	453	186	267	EB	16:30
50	C.R. 19A	0.05 Mi E OF DRUID PL.	C-1	734	21	19	26	4,963	4,593	4,870	4,972	4,610	-1.83%	424	16:45	424	194	230	WB	16:45
51	C.R. 44C (EUDORA RD)	0.32 Mi S OF U.S. 441	C-1	636	23	19	26	9,411	9,142	9,648	10,463	9,468	0.15%	736	17:00	736	390	347	NB	17:00
52	OLD EUSTIS RD	0.05 Mi W OF E CROOKED LAKE RD	C-1	51	24	19	26	1,552	1,407	1,553	1,473	1,540	-0.19%	150	12:45	142	76	66	WB	15:00
53	OLD 441/SR 500A (ALFRED)	0.11 Mi E OF S.R. 19	C-1	714	29	19	26	9,386	9,279	16,495	7,283	7,094	-6.76%	637	16:45	637	264	373	WB	16:45
54	C.R. 452 (LAKESHORE DR)	0.13 Mi E OF BAY RD	C	622	35	19	26	1,629	1,440	1,481	1,626	1,524	-1.65%	183	17:00	183	111	72	EB	17:00
55	C.R. 561	0.26 Mi S OF S.R. 19	C	613	6	20	26	11,746	11,446	10,380	10,585	12,230	1.02%	1,088	17:00	1,088	609	479	NB	17:00
56	C.R. 448	0.12 Mi E OF C.R. 561	B	69	8	20	26	6,642	7,070	7,625	8,192	7,112	1.72%	654	16:30	654	314	340	WB	16:30
57	C.R. 561	0.07 Mi S OF WOODLAND DR	B	118	20	20	26	6,694	6,779	7,393	8,032	8,017	4.61%	770	7:30	730	444	286	SB	16:45
58	DUDA RD	0.16 Mi E OF C.R. 448A	B	590	24	20	26	4,974	3,851	4,615	8,558	5,218	1.21%	510	16:45	510	221	289	WB	16:45
59	C.R. 48	0.15 Mi E OF C.R. 561	B	356	32	20	26	4,582	4,694	5,448	7,855	5,857	6.33%	743	7:30	559	291	268	EB	16:30
60	C.R. 561	0.55 Mi S OF C.R. 48	B	719	32	20	26	7,351	8,011	8,772	9,150	9,404	6.35%	923	7:30	860	482	378	SB	16:45
61	C.R. 561	0.13 Mi S OF C.R. 455	B	121	17	21	26	4,909	4,978	6,147	6,213	5,548	3.11%	549	17:00	549	315	234	SB	17:00
62	C.R. 561A	0.18 Mi E OF C.R. 561	B	596	30	21	26	1,099	1,214	1,397	1,544	1,531	8.64%	153	7:00	145	82	63	WB	17:00
63	C.R. 561	0.04 Mi N OF C.R. 561A	B	0	30	21	26	5,698	5,601	6,289	6,582	6,492	3.31%	626	16:45	626	287	338	SB	16:45
64	C.R. 561A	0.35 Mi E OF SCRUB JAY RD	B	596	32	21	26	1,052	1,214	1,378	1,570	1,381	7.04%	148	7:00	146	85	61	EB	16:45
65	C.R. 455	0.05 Mi W OF FOSGATE RD	B	86	3	22	26	2,293	2,842	2,601	2,817	2,935	6.36%	325	7:00	272	125	147	WB	17:15
66	C.R. 561 (LAKE MINNEOLA SHO)	0.11 Mi W OF U.S. 27	B	602	7	22	26	7,021	7,903	7,561	8,743	9,426	7.64%	850	7:30	723	402	321	EB	16:30
67	C.R. 455	0.10 Mi N OF MAGNOLIA CREEK LN	B	87	14	22	26	5,063	5,515	6,298	6,175	6,879	7.96%	861	7:00	646	331	315	NB	15:00
68	C.R. 50	0.05 Mi W OF PARK TRAIL DR	B	158	17	22	26	9,118	9,478	10,129	9,478	7,238	-5.61%	649	16:45	649	378	272	WB	16:45
69	C.R. 50	0.06 Mi W OF ORANGE CO LINE	A	155	25	22	26	5,134	5,192	6,100	5,051	5,950	3.76%	679	17:00	679	513	166	WB	17:00
70	C.R. 455	0.25 Mi N OF S.R. 50	A	89	26	22	26	6,271	6,735	7,336	7,655	7,844	5.76%	699	7:15	693	398	295	NB	17:00
71	ANDERSON HILL RD	0.11 Mi E OF LAKESHORE DR	A	694	31	22	26	1,705	1,831	1,578	1,722	1,584	-1.83%	158	17:00	158	105	53	WB	17:00
72	C.R. 445A	0.18 Mi E OF S.R. 19	E	269	8	16	27	1,040	961	1,012	1,260	1,415	8.00%	120	17:00	120	68	52	EB	17:00
73	C.R. 445	0.47 Mi E OF DEER RD EAST	E	644	4	17	27	639	453	451	659	600	-1.55%	86	15:15	86	38	47	WB	15:15
74	C.R. 42	AT MARION CO LINE	C	408	31	17	27	3,180	3,515	3,334	3,726	3,801	4.56%	316	15:30	316	118	198	EB	15:30
75	C.R. 42	0.14 Mi W OF C.R. 450	D	411	32	17	27	2,305	2,738	2,583	3,017	3,335	9.67%	273	16:00	436	199	237	EB	16:00
76	C.R. 439	0.10 Mi S OF C.R. 42	D	349	3	18	27	2,375	2,422	2,343	2,501	2,743	3.67%	251	16:45	251	82	169	SB	16:45
77	C.R. 450A	0.06 Mi W OF C.R. 44A NORTH	D	81	20	18	27	1,162	1,105	1,133	1,303	1,327	3.38%	141	16:45	141	72	69	WB	16:45
78	C.R. 44A	0.18 Mi W OF C.R. 439	D	351	34	18	27	3,832	4,114	3,789	4,174	4,151	2.02%	377	16:30	377	209	168	EB	16:30
79	C.R. 44A	0.10 Mi W OF ESTES RD	C-1	639	5	19	27	4,537	4,731	4,277	4,879	4,513	-0.14%	408	17:00	408	192	216	WB	17:00
80	C.R. 44	0.13 Mi W OF C.R. 44/C.R. 44A	C-1	817	6	19	27	9,515	9,312	9,005	9,326	11,150	4.04%	940	16:15	940	475	466	WB	16:15
81	ABRAMS RD	0.06 Mi S OF S.R. 44	C-1	731	7	19	27	3,846	4,148	3,962	6,052	4,565	4.38%	427	16:00	427	195	232	SB	16:00
82	C.R. 44	0.10 Mi N OF S.R. 44	C-1	344	7	19	27	7,917	6,891	6,784	7,596	8,145	0.71%	681	17:00	681	279	402	NB	17:00
83	C.R. 44B	0.21 Mi S OF S.R. 44			8	19	27													
84	BRITT RD	0.06 Mi S OF S.R. 44	D	665	9	19	27	1,681	1,780	1,878	2,326	1,978	4.15%	223	7:00	209	76	133	WB	16:30
85	C.R. 44B	0.16 Mi N OF U.S. 441			19	19	27													
86	DONNELLY ST.	0.46 Mi S OF U.S. 441	C-1	345	19	19	27	9,937	10,354	10,446	9,983	10,993	2.56%	958	14:30	905	492	413	NB	15:00
87	EAST CROOKED LAKE RD	0.08 Mi N OF U.S. 441	C-1	584	19	19	27	3,984	4,224	4,367	4,291	4,180	1.21%	356	17:00	356	219	137	NB	17:00
88	OLD EUSTIS RD	0.05 Mi E OF E CROOKED LK RD	C-1	51	19	19	27	1,586	1,414	1,521	1,528	1,659	1.13%	160	12:00	154	79	74	WB	16:15
89	C.R. 46 (SANFORD RD)	0.18 Mi W OF U.S. 441	D	805	32	19	27	5,507	5,809	6,533	7,311	6,925	5.90%	559	14:30	540	261	279	WB	17:15
90	OLD 441/SR. 500A (MT DORA)	0.03 Mi S OF ROBIE AV	D	545	32	19	27	4,210	4,138	4,005	11,692	5,169	5.27%	509	16:30	509	206	303	NB	16:30
91	C.R. 42	0.15 Mi N OF RANCHO LN	E	417	20	17	28	2,510	2,569	2,452	2,582	2,783	2.61%	260	16:00	260	135	125	SB	16:00
92	C.R. 437	0.09 Mi S OF S.R. 44	D	249	7	19	28	5,991	6,559	6,508	7,778	8,230	8.26%	819	17:15	819	339	479	NB	17:15
93	C.R. 46A	0.11 Mi N OF S.R. 46	D	615	25	19	28	6,826	6,905	6,752	6,568	8,273	4.92%	754	16:45	754	479	274	WB	16:45
94	C.R. 437	0.08 Mi N OF S.R. 46	D	251	30	19	28	9,082	9,073	9,369	13,317	10,702	4.19%	990	17:15	990	568	422	NB	17:15
95	C.R. 437	0.17 Mi S OF S.R. 46	D	252	30	19	28	6,709	7,240	7,261	8,761	8,922	7.38%	863	17:15	863	343	521	NB	17:15
96	C.R. 435	AT ORANGE CO LINE	D	651	32	19	28	5,049	5,121	4,761	5,319	4,818	-1.17%	482	16:45	482	191	291	NB	16:45

## 2016 Lake County Annual Traffic Counts

MAP STA #	ROAD NAME	LOCATION	Map Sheet	TMS ID	S E C	T W P	R N G	ANNUAL ADJUSTED DAILY TRAFFIC (AADT)					5-YEAR ANNUAL AVERAGE GROWTH RATE PERCENT	ADJUSTED PEAK HR VOLUME 2016	BEGIN PEAK HOUR 2016	ADJUSTED P.M. PEAK HOUR VOLUME 2016 (3-7 pm reported as 15:00-19:00)				
								2012	2013	2014	2015	2016				Total	NB/EB	SB/WB	Pk Dir	Time
97	C.R. 42	0.16 Mi W OF CROWS BLUFF RD	E	739	38	17	29	3,708	3,681	3,691	4,204	4,161	2.92%	365	16:45	365	241	125	EB	16:45
98	C.R. 467	0.33 Mi W OF U.S. 27/U.S. 441	C	824	15	19	24	6,010	5,447	6,121	7,042	5,580	-1.84%	469	16:15	469	229	240	WB	16:15
99	MAIN ST (LEESBURG)	0.08 Mi E OF U.S. 27/14th ST	C	841	26	19	24	11,185	10,588	10,612	7,077	9,652	-3.62%	833	15:00	833	366	467	WB	15:00
100	MAIN ST (LEESBURG)	0.10 Mi W OF U.S. 27/14th ST	C	470	27	19	24	9,932	9,786	9,508	8,150	11,385	3.47%	990	15:00	990	609	381	WB	15:00
101	RADIO RD	0.12 Mi N OF U.S. 441/S.R. 500	C	501	23	19	25	7,711	8,154	6,829	6,945	6,658	-3.60%	572	16:45	572	236	337	NB	16:45
102	C.R. 561	0.08 Mi S OF C.R. 565B/LOG HOUSE	A	128	11	23	25	2,250	2,583	2,557	4,585	2,094	-1.78%	250	7:30	202	136	65	SB	17:00
103	S.R. 33	0.18 Mi S OF C.R. 561	A	4	8	24	25	5,644	4,630	4,803	7,037	6,551	3.80%	487	9:30	444	232	212	NB	15:30
104	C.R. 19A	95 Ft E OF KURT ST	C-1	659	23	19	26	3,569	3,720	2,527	3,997	2,967	-4.52%	292	7:15	108	61	47	EB	15:00
105	C.R. 19A	0.12 Mi S OF U.S. 441	C-1	287	23	19	26	13,193	13,405	13,833	14,597	14,108	1.69%	1,197	16:45	1,197	607	590	NB	16:45
106	C.R. 42	0.58 Mi E OF C.R. 450	D	412	33	17	27	3,714	3,704	3,549	3,988	4,290	3.67%	378	17:00	378	172	206	WB	17:00
107	C.R. 452 (EUSTIS)	0.15 Mi W OF S.R. 19	C-1	316	2	19	26	9,974	12,565	11,112	11,929	11,123	2.76%	910	16:45	910	526	384	WB	16:45
108	U.S. 27/U.S. 441	0.10 Mi S OF SUMTER CO LINE	C	298	6	18	24	30,560	29,480	33,086	37,265	38,749	6.11%	3,591	13:45	3,354	1,639	1,715	SB	15:00
109	GRAND HIGHWAY	0.14 Mi N OF S.R. 50	A	179	29	22	26	5,223	6,005	5,726	4,193	6,436	5.36%	590	17:00	590	281	309	SB	17:00
110	S.R. 40	AT MARION CO LINE	E	458	39	15	28	5,266	4,918	4,088	4,257	3,433	-10.15%	323	15:45	323	168	155	EB	15:45
111	S.R. 19	AT MARION CO LINE	E	268	30	15	28	1,499	1,979	1,284	2,074	1,408	-1.56%	129	12:15	116	59	57	NB	15:00
112	EAGLESNEST RD	0.045 Mi E OF U.S. 27/U.S. 441	C	313	28	18	24	2,912	2,656	2,447	3,106	3,113	1.69%	272	16:45	272	98	175	WB	16:45
113	C.R. 452	0.20 Mi S OF SOUTH EM-EN-EL GROVE RD	C	324	14	18	25	5,767	6,426	5,571	5,468	7,374	6.34%	642	16:45	642	349	292	NB	16:45
114	C.R. 19A	0.05 Mi W OF S.R. 19	C-1	352	35	18	26	2,786	2,851	2,561	2,725	3,109	2.78%	279	7:30	276	123	152	SB	16:30
115	C.R. 44A	0.08 Mi W OF S.R. 44	D	332	35	18	28	1,256	1,437	1,129	1,146	1,194	-1.26%	117	15:45	117	70	47	EB	15:45
116	C.R. 25A (FRUIT PK.)	0.063 Mi S OF U.S. 27/U.S. 441	C	652	4	19	24	7,586	8,072	7,358	8,109	8,232	2.06%	711	16:45	711	367	344	EB	16:45
117	C.R. 466A (PICCIOLA RD)	0.20 Mi N OF PICCIOLA CUTOFF	C	312	10	19	24	6,597	7,233	7,173	8,993	7,063	1.72%	604	17:00	604	221	383	NB	17:00
118	C.R. 25A (LEESBURG)	0.126 Mi W OF U.S. 27	C	379	34	19	24	332	341	239	323	603	16.11%	73	13:00	51	25	26	EB	15:30
119	C.R. 44	0.07 Mi E OF C.R. 473	C	737	2	19	25	14,635	16,028	14,771	13,062	12,492	-3.88%	1,063	17:00	1,063	380	683	EB	17:00
120	C.R. 44 LEG A	0.10 Mi NW OF U.S. 441	C	328	16	19	25	1,544	1,404	1,320	1,323	1,304	-4.14%	138	9:00	93	20	73	SB	15:00
121	OLD MT DORA RD	0.11 Mi W OF EUDORA RD	C-1	517	23	19	26	4,327	4,201	4,161	5,150	4,485	0.90%	453	16:30	453	214	238	WB	16:30
122	MORNINGSIDE DR (MT DORA)	0.14 Mi N OF OLD 441	C-1	549	25	19	26	1,293	1,370	1,181	1,565	1,325	0.60%	133	14:45	126	78	48	NB	16:45
123	OLD 441	0.20 Mi E OF EUDORA RD	C-1	712	25	19	26	12,118	12,723	10,908	12,426	10,957	-2.49%	908	16:15	908	438	470	WB	16:15
124	OLD 441	0.19 Mi W OF C.R. 19A/EUDORA RD	C-1	65	26	19	26	8,551	8,453	7,311	8,213	7,533	-3.12%	641	16:15	641	304	337	WB	16:15
125	OLD 441/ALFRED ST	0.12 Mi E OF C.R. 19A/DORA AV	C-1	713	28	19	26	9,731	9,631	7,784	7,323	8,174	-4.27%	715	16:30	715	354	362	WB	16:30
126	ESTES RD	0.035 Mi N OF S.R. 44	C-1	583	8	19	27	2,927	2,970	3,162	3,497	3,040	0.95%	326	16:15	326	136	191	WB	16:15
127	C.R. 439	0.08 Mi N OF S.R. 44	D	346	10	19	27	3,212	3,173	3,248	3,781	3,736	3.85%	347	17:00	347	124	222	NB	17:00
128	C.R. 445A	0.11 Mi W OF ASTOR PARK CUTOFF RD	E	272	37	15	27	1,447	1,965	1,599	1,847	2,116	9.96%	180	15:45	180	90	90	NB	15:45
129	WOLF BRANCH RD	0.12 Mi E OF U.S. 441	D	710	29	19	27	9,110	8,845	9,697	9,507	9,950	2.23%	916	7:30	825	454	371	EB	16:45
130	ROUND LAKE RD	0.17 Mi S OF S.R. 46	D	508	35	19	27	3,513	3,871	4,338	4,880	4,764	7.91%	485	7:45	418	192	226	NB	17:15
131	S.R. 46	0.17 Mi E OF C.R. 46A	D	245	25	19	28	16,372	18,278	17,308	20,770	20,470	5.74%	1,986	16:45	1,986	850	1,136	WB	16:45
132	C.R. 33	0.34 Mi W OF U.S. 27	B	226	11	20	24	7,651	8,243	7,719	8,443	8,444	2.50%	654	15:30	654	361	293	WB	15:30
133	C.R. 33	0.28 Mi S OF C.R. 470/C.R. 48	B	229	15	20	24	7,801	7,155	7,130	5,056	7,552	-0.81%	622	16:30	622	228	394	SB	16:30
134	C.R. 448	AT ORANGE CO LINE	B	71	13	20	26	4,902	5,076	5,524	8,141	6,292	6.44%	608	7:00	607	327	280	EB	16:30
135	C.R. 478	0.08 Mi E OF S.R. 19	B	597	7	22	25	996	991	936	1,085	1,351	7.91%	146	7:45	140	89	51	EB	16:15
136	C.R. 565A	0.2 Mi N OF S.R. 50	B	599	20	22	25	5,187	7,246	7,386	9,936	10,992	20.65%	966	16:30	966	576	390	NB	16:30
137	C.R. 565A	0.27 Mi S OF S.R. 50	A	594	20	22	25	1,891	1,982	1,965	3,541	2,186	3.69%	217	7:00	193	103	90	SB	16:30
138	C.R. 565B	0.10 Mi E OF C.R. 565A	A	593	3	23	25	2,015	1,252	2,055	2,194	2,173	1.92%	227	16:30	227	127	100	EB	16:30
139	C.R. 561	0.11 Mi E OF S.R. 33	A	131	8	24	25	1,171	1,285	1,231	1,483	1,467	5.80%	132	16:45	132	90	42	EB	16:45
140	S.R. 33	AT POLK CO LINE	A	1	28	24	25	4,283	3,787	3,384	3,400	4,481	1.13%	343	7:00	305	181	123	NB	16:15
141	U.S. 27/S.R. 25	0.56 Mi N OF POLK CO LINE	A	25	35	24	26	36,605	37,367	35,361	55,443	32,261	-3.11%	2,435	17:00	2,435	1,509	926	NB	17:00
142	U.S. 27/S.R. 25	0.53 Mi E OF C.R. 565	B	217	20	21	25	17,428	20,279	17,028	25,160	23,286	7.51%	1,841	16:45	1,841	888	953	SB	16:45
143	JALARMY RD	0.29 Mi N OF C.R. 561	B	486	12	22	25	2,241	2,996	3,098	3,784	3,714	13.47%	333	16:45	333	190	143	NB	16:45
144	LOG HOUSE RD	0.05 Mi E OF C.R. 561	A	133	11	23	25	2,743	2,957	3,195	4,798	2,944	1.78%	319	7:30	313	201	112	EB	15:00

## 2016 Lake County Annual Traffic Counts

MAP STA #	ROAD NAME	LOCATION	Map Sheet	TMS ID	S E C	T W P	R N G	ANNUAL ADJUSTED DAILY TRAFFIC (AADT)					5-YEAR ANNUAL AVERAGE GROWTH RATE PERCENT	ADJUSTED PEAK HR VOLUME 2016	BEGIN PEAK HOUR 2016	ADJUSTED P.M. PEAK HOUR VOLUME 2016 (3-7 pm reported as 15:00-19:00)				
								2012	2013	2014	2015	2016				Total	NB/EB	SB/WB	Pk Dir	Time
145	LAKE LOUISA RD	0.20 Mi S OF LAKESHORE DR	A	171	6	23	26	3,377	3,244	3,124	6,428	3,456	0.57%	319	17:00	319	156	163	SB	17:00
146	HARTWOOD MARSH RD	0.15 Mi E OF U.S. 27/S.R. 25	A	362	9	23	26	11,467	11,221	11,908	10,704	14,102	5.31%	1,278	7:45	1,251	771	481	WB	17:00
147	ROYAL TRAILS RD	0.11 Mi N OF S.R. 44	D	510	18	18	29	1,344	1,459	1,533	1,518	1,519	3.09%	168	16:45	168	123	45	WB	16:45
148	WOLF BRANCH RD	0.075 Mi W OF C.R. 437	D	49	19	19	28	4,072	4,148	4,429	5,131	4,997	5.25%	527	17:00	527	249	278	EB	17:00
149	LANE PARK CUTOFF	0.045 Mi E OF S.R. 19	B	558	6	20	26	1,484	1,612	1,597	1,795	1,720	3.77%	341	8:15	285	176	109	WB	16:15
150	HARTWOOD MARSH RD	1.09 Mi W OF ORANGE CO LINE	A	918	2	23	26	9,066	9,402	9,589	10,759	10,247	3.11%	928	17:00	928	209	720	WB	17:00
151	LK LOUISA RD	0.17 Mi W OF U.S. 27	A	174	16	23	26	4,026	3,877	3,894	4,318	4,044	0.11%	367	7:15	365	301	64	WB	17:15
152	MAIN ST	0.05 Mi E OF S.R. 44 (TO U.S. 441)	C	478	25	19	24	3,998	3,943	3,982	4,275	4,359	2.18%	439	17:00	439	138	301	EB	17:00
153	C.R. 48	0.12 Mi W OF U.S. 27	B	218	14	20	24	7,165	7,246	6,733	8,459	7,698	1.81%	698	15:45	698	351	347	EB	15:45
154	OLD441 (ALFRED ST)	0.08 Mi W OF S.R. 19			29	19	26													
155	C.R. 474	0.04 Mi W OF U.S. 27/S.R. 25	A	703	27	24	26	2,359	2,331	1,939	1,849	3,741	12.22%	282	7:15	246	139	107	WB	16:15
156	DAVID WALKER DR	0.05 Mi N OF U.S. 441/S.R. 500	C-1	424	22	19	26	5,284	4,956	4,363	5,239	5,459	0.81%	483	11:30	476	248	228	NB	17:00
157	DAVID WALKER DR	0.05 Mi W OF KURT ST (EUSTIS)	C-1	721	15	19	26	5,023	4,218	4,562	4,724	5,651	2.99%	480	17:00	480	142	338	EB	17:00
158	C.R. 50	0.08 Mi W OF C.R. 455	B	156	23	22	26	5,656	5,515	4,308	6,698	5,592	-0.28%	620	17:00	620	448	172	WB	17:00
159	C.R. 25 (TEAGUE TL)	0.21 Mi S OF GRIFFIN AV	C	367	8	18	24	7,094	7,765	7,633	8,884	6,039	-3.95%	557	7:30	524	328	196	SB	15:00
160	ROLLING ACRES RD	0.10 Mi S OF U.S. 27/U.S. 441	C	843	8	18	24	15,752	16,031	19,180	19,406	19,787	5.87%	2,264	14:45	2,183	919	1,265	SB	15:00
161	C.R. 44C (GRIFFIN RD)	0.061 Mi E OF C.R. 468	C	634	16	19	24	5,047	5,210	6,041	5,744	5,348	1.46%	488	7:45	457	202	255	WB	15:15
162	C.R. 455	0.12 Mi E OF S.R. 19	B	718	11	21	25	2,187	2,139	2,291	2,434	2,740	5.79%	251	6:45	226	120	105	EB	16:45
163	HOOKS ST	0.06 Mi W OF U.S. 27	A	435	30	22	26	6,096	6,330	6,847	6,570	7,007	3.54%	599	17:30	599	347	252	WB	17:30
164	WAYCROSS AV	0.126 Mi W OF S.R. 44	C-1	529	18	19	27	4,712	5,178	5,077	4,885	5,149	2.24%	451	17:00	451	295	156	EB	17:00
165	HANCOCK RD	0.228 Mi S OF S.R. 50	A	911	27	22	26	15,407	15,769	17,586	19,328	18,478	4.65%	1,569	17:15	1,569	637	932	SB	17:15
166	ROLLING ACRES RD	0.17 Mi N OF C.R. 466	C	845	17	18	24	15,001	15,683	17,210	16,113	15,627	1.03%	1,444	12:15	1,322	562	760	SB	15:15
167	C.R. 466B	0.20 Mi S OF EMMAUS RD	C	308	2	19	24	3,282	4,726	4,375	4,852	4,415	7.70%	413	16:30	413	154	259	NB	16:30
168	DAVID WALKER DR	0.20 Mi S OF U.S. 441	C-1	423	22	19	26	6,642	7,045	6,860	7,505	7,612	3.47%	652	17:00	652	337	315	NB	17:00
169	CITRUS TOWER BV	0.14 Mi N OF S.R. 50	A	833	28	22	26	13,398	13,811	17,147	15,715	16,110	4.72%	1,376	16:30	1,376	684	692	SB	16:30
170	JOHNS LAKE RD	0.34 Mi E OF U.S. 27	A	487	32	22	26	5,816	7,104	6,936	10,411	8,489	9.92%	766	15:15	766	390	375	EB	15:15
171	C.R. 466A	0.10 Mi W OF U.S. 27/U.S. 441	C	315	4	19	24	4,889	6,723	6,464	6,400	6,399	6.96%	536	13:30	528	277	251	WB	15:00
172	C.R. 44A (GRIFFIN RD)	0.165 Mi W OF U.S. 27 (14th ST)	C	407	22	19	24	7,559	8,288	7,932	9,933	6,845	-2.45%	696	15:30	696	288	408	EB	15:30
173	C.R. 473	0.083 Mi S OF C.R. 44	C	337	2	19	25	6,380	6,137	5,746	5,655	6,066	-1.25%	575	16:15	575	254	321	NB	16:15
174	RADIO RD	0.084 Mi S OF C.R. 44	C	500	3	19	25	3,298	3,211	3,118	2,220	3,029	-2.10%	287	16:45	287	151	136	NB	16:45
175	SLEEPY HOLLOW RD	0.064 Mi S OF U.S. 441	C	0	20	19	25	2,769	3,034	3,039	3,428	3,531	6.26%	339	17:30	339	143	196	SB	17:30
176	C.R. 561	0.08 Mi S OF S.R. 50	A	720	24	22	25	5,797	6,117	5,515	5,871	6,142	1.45%	575	17:15	575	243	332	SB	17:15
177	LAKESHORE DR (CLERMONT)	0.122 Mi N OF LOG HOUSE RD/ OSWALT RD	A	92	12	23	25	8,432	8,837	8,756	9,321	10,248	5.00%	886	7:30	876	316	561	SB	17:15
178	CITRUS TOWER BV	0.113 Mi E OF U.S. 27	B	135	19	22	26	10,237	10,843	11,752	12,303	12,177	4.43%	1,045	16:30	1,045	444	601	EB	16:30
179	N HANCOCK RD	0.102 Mi N OF S.R. 50	A	150	27	22	26	14,193	14,984	15,491	16,901	14,533	0.59%	1,195	16:30	1,195	643	552	NB	16:30
180	HANCOCK RD	0.113 Mi N OF HARTWOOD MARSH RD	A	153	10	23	26	7,557	7,843	8,359	8,513	8,483	2.93%	768	17:00	768	405	362	NB	17:00
181	C.R. 437	0.105 Mi S OF C.R. 44A	D	247	31	18	28	4,692	4,804	4,816	2,702	5,178	2.50%	481	17:00	481	312	169	NB	17:00
182	C.R. 435	0.091 Mi S OF S.R. 46	D	649	29	19	28	6,724	6,142	6,263	7,463	6,629	-0.35%	605	17:00	605	316	289	SB	17:00
183	C.R. 448	0.155 Mi W OF C.R. 561	B	67	7	20	26	2,013	3,145	3,009	3,274	3,721	16.61%	333	16:15	333	158	175	WB	16:15
184	HUFFSTETLER DR	0.065 Mi E OF DAVID WALKER DR	C-1	483	22	19	26	815	715	490	885	883	2.03%	92	15:30	92	55	37	EB	15:30
185	HOOKS ST	0.7 Mi W OF HANCOCK RD	A	919	28	22	26	6,624	6,734	7,191	5,511	11,451	14.66%	1,045	17:00	1,045	442	603	WB	17:00
186	LAKE ELLA RD	0.169 Mi W OF U.S. 27/U.S. 441	C	497	28	18	24	2,038	1,684	1,650	1,998	2,054	0.20%	182	15:45	182	93	89	WB	15:45
187	LAKE ELLA RD	0.20 Mi W OF MICRO RACETRACK RD	C	496	31	18	24	1,140	1,130	1,161	1,132	1,262	2.59%	121	7:00	118	53	65	EB	15:00
188	MICRO RACETRACK RD	0.098 Mi N OF C.R. 466A	C	498	6	19	24	3,787	5,309	6,174	6,586	6,942	16.36%	648	14:15	586	279	308	SB	15:00
189	C.R. 25A	0.103 Mi N OF C.R. 25A/URICK ST	C	655	9	19	24	5,850	5,726	5,737	9,242	5,215	-2.83%	484	16:30	484	270	214	NB	16:30
190	THOMAS AV	0.081 Mi N OF C.R. 44A/C.R. 44C	C	808	15	19	24	9,295	7,787	7,353	9,241	7,639	-4.79%	676	15:00	676	331	345	NB	15:00
191	C.R. 455	0.14 Mi E OF C.R. 561	B	83	17	21	26	1,220	1,395	1,391	5,744	1,528	5.79%	171	7:15	149	70	79	WB	16:15
192	VISTA DEL LAGO BV	0.13 Mi W OF U.S. 27	A	167	9	23	26	1,428	1,169	1,334	1,510	1,372	-1.00%	146	17:15	146	93	53	WB	17:15

## 2016 Lake County Annual Traffic Counts

MAP STA #	ROAD NAME	LOCATION	Map Sheet	TMS ID	S E C	T W P	R N G	ANNUAL ADJUSTED DAILY TRAFFIC (AADT)					5-YEAR ANNUAL AVERAGE GROWTH RATE PERCENT	ADJUSTED PEAK HR VOLUME 2016	BEGIN PEAK HOUR 2016	ADJUSTED P.M. PEAK HOUR VOLUME 2016 (3-7 pm reported as 15:00-19:00)				
								2012	2013	2014	2015	2016				Total	NB/EB	SB/WB	Pk Dir	Time
193	WILSON LAKE PARKWAY	0.02 Mi S OF U.S. 27	B	773	26	21	25	350	951	1,330	1,950	2,178	57.98%	212	8:45	165	81	84	NB	17:15
194	ORANGE AV	0.161 Mi E OF S.R. 19 (EUSTIS)	C-1	536	11	19	26	11,043	10,248	10,384	11,784	11,192	0.34%	967	16:15	967	424	543	EB	16:15
195	CITRUS GROVE ROAD	0.14 Mi E OF U.S. 27	B	546	6	22	26	750	858	904	1,009	1,385	16.58%	202	6:45	130	63	67	WB	16:15
196	BLACKSTILL LAKE RD	0.16 Mi N OF C.R. 50	B	672	16	22	26	2,887	3,163	3,106	3,362	3,135	2.08%	307	7:00	300	144	156	SB	15:15
197	CITRUS TOWER BV	0.10 Mi N OF JOHNS LAKE RD	A	884	32	22	26	13,353	16,629	14,849	17,884	18,431	8.39%	1,556	17:00	1,556	634	922	SB	17:00
198	ORANGE AV	720 Ft E OF C.R. 44 (BYPASS)	C-1	466	7	19	27	11,527	11,812	11,555	13,661	14,189	5.33%	1,199	16:30	1,199	537	662	WB	16:30
199	LAKE MACK DR	0.04 Mi S OF C.R. 42	E	564	17	17	29	1,646	1,435	1,399	1,571	1,369	-4.50%	137	17:00	137	47	90	SB	17:00
200	GRIFFIN AV	0.085 Mi W OF C.R. 25	C	299	8	18	24	8,691	8,588	8,692	9,313	8,903	0.60%	847	15:00	847	347	500	EB	15:00
201	ROLLING ACRES RD	0.053 Mi N OF LAKE ELLA RD	C	503	30	18	24	3,342	4,776	5,085	5,525	6,343	17.38%	603	14:00	585	215	371	SB	15:30
202	LAKE DR	0.08 Mi S OF S.R. 44 (PINE LAKES)	D	568	8	18	29	735	721	818	1,125	753	0.61%	79	16:30	79	23	57	EB	16:30
203	ROUND LAKE RD	0.05 Mi S OF WOLF BRANCH RD	D	505	26	19	27	2,306	2,355	2,546	2,719	2,878	5.70%	517	7:45	349	148	201	NB	15:00
204	C.R. 470	0.536 Mi E OF TURNPIKE OVERPASS	B	223	17	20	24	5,760	4,988	4,262	6,525	7,257	5.95%	597	16:00	597	307	291	EB	16:00
205	SHIRLEY SHORES RD	0.15 Mi N OF C.R. 448	B	514	15	20	26	2,141	1,929	2,140	3,101	2,548	4.45%	237	17:30	237	161	77	NB	17:30
206	C.R. 565 (VILLA CITY RD)	0.134 Mi N OF S.R. 50	B	612	24	22	24	2,131	2,364	2,838	3,744	3,180	10.53%	279	15:30	279	154	126	NB	15:30
207	C.R. 561	0.10 Mi N OF C.R. 565A	B	605	14	22	25	3,958	3,914	4,173	5,073	4,391	2.63%	382	14:45	374	174	200	SB	17:00
208	TURKEY FARM RD	0.040 Mi N OF C.R. 50	B	169	17	22	26	4,506	5,172	6,116	5,258	344	-47.42%	36	13:45	36	14	22	SB	17:00
209	N HANCOCK RD	0.106 Mi S OF C.R. 50	B	148	16	22	26	10,745	11,404	14,302	14,775	11,023	0.64%	919	17:00	919	472	448	NB	17:00
210	OSWALT RD	0.126 Mi E OF LAKESHORE DR (CLERMONT)	A	170	12	23	25	3,676	3,712	3,596	4,592	3,756	0.54%	331	7:30	327	229	98	EB	17:15
211	SHAY BV	0.158 Mi N OF GRIFFIN AV	C	511	7	18	24	2,375	3,279	3,324	3,483	3,841	12.77%	372	12:00	339	162	177	SB	15:15
212	W McCLENDON ST	0.024 Mi W OF U.S. 27/U.S. 441	C	550	20	18	24	594	448	395	675	511	-3.70%	59	7:00	44	15	30	WB	15:00
213	W LADY LAKE BV	0.029 Mi W OF U.S. 27/U.S. 441	C	493	20	18	24	1,281	2,039	1,132	1,627	1,292	0.21%	174	11:00	91	44	46	WB	15:00
214	LADY LAKE BV	0.045 Mi E OF U.S. 27/U.S. 441	C	494	21	18	24	685	619	633	665	615	-2.67%	62	10:15	61	44	18	EB	17:30
215	GRAYS AIRPORT RD	0.10 Mi N OF EAGLESNEST RD	C	401	27	18	24	1,483	1,672	1,760	1,771	1,800	4.96%	189	17:15	189	74	115	NB	17:15
216	SOUTH GRAYS AIRPORT RD	0.048 Mi E OF U.S. 27/U.S. 441	C	403	34	18	24	1,308	673	2,520	3,217	706	-14.30%	73	17:00	73	46	27	EB	17:00
217	ARLINGTON AV	0.097 Mi S OF W LADY LAKE BV	C	681	20	18	24	1,149	1,264	1,432	1,540	1,486	6.64%	143	16:30	143	91	52	SB	16:30
218	SOUTH FISH CAMP RD	0.097 Mi N OF C.R. 44	C-1	577	32	18	26	1,396	1,427	1,327	1,345	1,423	0.48%	133	16:45	133	46	87	NB	16:45
219	ROSE ST	0.3 Mi E OF OAK ST	C	72	13	18	26	1,169	661	1,195	1,351	798	-9.10%	89	6:45	85	46	39	EB	15:30
220	C.R. 44A (NORTH)	0.2 Mi N OF C.R. 450A	D	75	20	18	27	1,433	1,452	1,547	1,652	1,599	2.78%	190	17:00	190	123	68	NB	17:00
221	C.R. 44A (EAST)	0.6 Mi E OF C.R. 439	D	335	34	18	27	UC	3,740	3,352	3,751	3,797	0.38%	359	16:45	359	196	163	WB	16:45
222	THOMAS AV	0.102 Mi S OF C.R. 44A/C.R. 44C	C	527	22	19	24	8,107	7,011	7,479	9,704	7,163	-3.05%	647	15:30	647	321	326	NB	15:30
223	LONE OAK DR	0.15 Mi S OF W MAIN ST	C	685	27	19	24	3,596	2,834	2,657	3,254	3,230	-2.65%	285	7:30	275	131	144	SB	15:30
224	GRIFFIN RD	0.123 Mi E OF U.S. 27/U.S. 441	C	404	14	19	24	2,714	2,279	2,045	3,793	2,469	-2.34%	346	7:45	210	84	126	WB	17:00
225	LEE ST	0.155 Mi N OF U.S. 441	C	555	23	19	24	4,432	2,071	2,235	2,948	2,554	-12.87%	247	14:45	239	93	146	SB	15:00
226	LEE ST	0.115 Mi S OF U.S. 441	C	556	23	19	24	3,185	2,992	2,743	3,495	3,070	-0.91%	284	11:15	275	123	152	NB	16:30
227	CANAL ST	0.026 Mi N OF MAIN ST	C	663	26	19	24	3,942	4,101	3,913	5,849	4,776	4.92%	424	16:30	424	256	168	NB	16:30
228	CANAL ST	0.035 Mi S OF MAIN ST	C	663	26	19	24	3,357	4,865	3,183	5,107	3,361	0.03%	283	14:45	283	161	123	NB	15:00
229	LAKE ST	0.064 Mi N OF MAIN ST	C	723	25	19	24	2,987	2,816	2,621	2,698	2,635	-3.09%	219	16:30	219	95	125	SB	16:30
230	LAKE ST	0.098 Mi S OF MAIN ST	C	566	25	19	24	4,305	3,555	3,114	3,490	3,020	-8.48%	225	12:45	222	127	95	NB	16:30
231	MAIN ST	0.051 Mi E OF CANAL ST	C	474	25	19	24	5,216	5,026	4,815	4,278	4,796	-2.08%	462	16:30	462	233	229	EB	16:30
232	MAIN ST	0.09 Mi E OF LAKE ST	C	476	25	19	24	4,877	3,533	4,569	3,412	3,967	-5.03%	412	16:45	412	275	138	EB	16:45
233	SUNNYSIDE DR	0.106 Mi S OF SUNNYSIDE DR (EAST)	C	525	30	19	25	1,459	1,437	1,957	1,624	1,414	-0.78%	159	17:00	159	52	106	SB	17:00
234	DEAD RIVER RD	0.2 Mi W OF S.R. 19	C-1	589	31	19	26	6,273	5,854	6,284	6,821	7,205	3.52%	583	17:15	583	351	232	WB	17:15
235	WOODLEA RD	0.1 Mi W OF S.R. 19	C	533	31	19	26	2,525	2,792	989	3,782	2,596	0.70%	257	17:30	257	81	176	WB	17:30
236	WELLS AV	0.12 Mi E OF S.R. 19	C	530	32	19	26	1,475	1,722	889	939	1,034	-8.49%	114	16:15	114	106	8	EB	16:15
237	MAIN ST	0.04 Mi W OF SINCLAIR AV	C-1	552	29	19	26	7,887	6,357	11,820	7,280	7,450	-1.41%	701	16:30	701	267	434	WB	16:30
238	MAIN ST	0.3 Mi E OF DISSTON AV	C-1	656	28	19	26	2,068	1,800	2,103	3,058	2,792	7.79%	291	16:45	291	146	145	EB	16:45
239	C.R. 452 (LAKESHORE DR)	0.06 Mi W OF COLLEY DR. (EAST)	C-1	626	34	19	26	1,407	1,371	1,525	1,580	1,493	1.49%	218	17:00	218	147	71	WB	17:00
240	ST CLAIR ABRAMS AV	0.06 Mi N OF ALFRED ST	C-1	632	29	19	26	3,603	3,395	3,995	3,066	3,633	0.21%	371	15:15	371	166	204	SB	15:15

## 2016 Lake County Annual Traffic Counts

MAP STA #	ROAD NAME	LOCATION	Map Sheet	TMS ID	S E C	T W P	R N G	ANNUAL ADJUSTED DAILY TRAFFIC (AADT)					5-YEAR ANNUAL AVERAGE GROWTH RATE PERCENT	ADJUSTED PEAK HR VOLUME 2016	BEGIN PEAK HOUR 2016	ADJUSTED P.M. PEAK HOUR VOLUME 2016 (3-7 pm reported as 15:00-19:00)				
								2012	2013	2014	2015	2016				Total	NB/EB	SB/WB	Pk Dir	Time
241	DORA AV	.01 Mi S OF ALFRED ST	C-1	713	28	19	26	1,095	829	1,268	1,747	1,380	5.95%	129	12:45	129	81	47	SB	16:45
242	LAKE EUSTIS DR	0.1 Mi N OF U.S. 441	C-1	375	21	19	26	5,071	5,433	5,445	5,520	6,049	4.50%	542	7:15	542	242	300	NB	16:30
243	S. MT HOMER RD	0.05 Mi S OF U.S. 441	C-1	442	21	19	26	233	291	291	278	237	0.50%	31	15:45	31	7	24	NB	15:45
244	MT HOMER RD	0.14 Mi N OF U.S. 441	C-1	440	22	19	26	1,469	1,303	1,278	1,523	1,562	1.54%	137	16:30	137	38	99	NB	16:30
245	MT HOMER RD	0.1 Mi W OF KURT ST	C-1	439	15	19	26	3,433	3,118	3,052	4,040	3,782	2.45%	356	16:45	356	199	157	NB	16:45
246	FAIRVIEW AV	0.1 Mi S OF ALFRED ST	C-1	761	27	19	26	717	675	553	710	591	-4.72%	58	15:00	58	29	29	NB	15:00
247	KURT ST	0.06 Mi S OF HUFFSTETLER DR	C-1	899	23	19	26	4,567	4,444	4,386	5,075	4,818	1.35%	456	11:45	437	204	232	NB	16:30
248	KURT ST	0.1 Mi S OF W GOLFLINKS AV	C-1	913	14	19	26	4,005	3,476	3,395	3,995	3,722	-1.82%	318	14:30	316	117	199	NB	16:30
249	KURT ST	0.1 Mi N OF W GOLFLINKS AV	C-1	784	14	19	26	7,808	7,172	7,130	8,034	7,163	-2.13%	657	16:30	657	450	207	NB	16:30
250	LAKEVIEW AV	0.2 Mi W OF S.R. 19	C-1	779	14	19	26	7,391	6,748	6,443	7,076	6,679	-2.50%	560	16:45	560	226	334	EB	16:45
251	W GOLFLINKS AV	0.1 Mi E OF KURT ST	C-1	572	14	19	26	851	879	875	1,117	923	2.05%	104	14:30	89	59	30	WB	15:00
252	ARDICE AV	0.05 Mi E OF KURT ST	C-1	682	23	19	26	4,798	4,886	4,689	5,687	4,567	-1.23%	429	12:00	408	222	186	EB	16:45
253	BAY RD	0.1 Mi S OF OLD 441	C-1	675	26	19	26	1,682	1,723	1,538	1,908	1,629	-0.79%	171	17:00	171	81	89	SB	17:00
254	BAY RD	0.1 Mi N OF OLD 441	C-1	674	26	19	26	2,905	2,495	2,127	1,628	2,836	-0.61%	263	16:30	263	121	143	SB	16:30
255	GROVE ST	0.02 Mi N OF OLD MT DORA RD	C-1	426	14	19	26	3,246	3,371	3,453	4,020	3,491	1.84%	370	16:45	370	232	137	NB	16:45
256	GROVE ST	0.1 Mi N OF GOLFLINKS AV	C-1	428	14	19	26	2,733	2,529	2,619	3,125	2,801	0.61%	267	15:45	267	96	171	NB	15:45
257	GROVE ST	0.1 Mi N OF LAKEVIEW AV	C-1	430	14	19	26	1,248	1,169	1,270	1,600	1,217	-0.63%	113	16:00	113	17	96	SB	16:00
258	C.R. 19A	0.2 Mi S OF HOLLY DR	C-1	65	26	19	26	7,470	7,871	7,824	5,472	8,126	2.13%	698	14:30	680	302	379	EB	16:30
259	LAKEVIEW AV	.12 Mi E OF S.R. 19	C-1	429	14	19	26	4,620	5,293	5,101	4,681	4,003	-3.52%	362	17:00	362	220	143	EB	17:00
260	EUDORA RD	0.2 Mi N OF U.S. 441	C-1	579	24	19	26	2,730	4,454	4,838	3,416	3,055	2.86%	321	16:30	321	125	196	NB	16:30
261	PRESCOTT ST	0.12 Mi N OF E ORANGE AV	C-1	541	11	19	26	445	564	434	521	410	-2.05%	46	16:15	46	12	33	SB	16:15
262	BATES AV	0.07 Mi E OF C.R. 44	C-1	0	2	19	26	1,223	1,238	1,661	1,447	1,408	3.59%	330	8:15	228	88	139	WB	16:00
263	BATES AV	0.1 Mi E OF PRESCOTT ST	C-1	765	1	19	26	1,314	1,024	2,452	901	934	-8.18%	84	8:00	82	50	32	WB	15:15
264	HASELTON ST	0.17 Mi S OF E ORANGE AV	C-1	432	12	19	26	1,942	1,604	1,687	1,842	2,059	1.48%	190	17:00	190	91	99	SB	17:00
265	WASHINGTON AV	0.1 Mi E OF HASELTON ST	C-1	534	12	19	26	2,597	2,420	2,257	2,557	2,358	-2.38%	246	14:30	205	115	90	EB	15:00
266	LAKEVIEW AV	.01 Mi W OF HASELTON ST	C-1	901	13	19	26	3,272	2,984	2,941	3,311	3,073	-1.56%	298	16:45	298	180	119	EB	16:45
267	LAKESHORE DR	0.06 Mi N OF OLD 441	C-1	620	30	19	27	593	606	690	872	661	2.76%	71	17:00	71	38	33	SB	17:00
268	OLD 441	0.09 Mi E OF LAKESHORE DR	C-1	58	30	19	27	9,364	8,805	8,602	9,762	9,922	1.46%	884	16:30	884	426	458	WB	16:30
269	HIGHLAND ST	0.04 Mi N OF 5th AV	C-1	434	29	19	27	2,270	2,267	2,403	2,716	2,661	4.05%	310	6:45	254	139	114	NB	16:15
270	LIMIT AV	.01 Mi W OF U.S. 441	D	709	20	19	27	2,201	2,035	2,405	2,406	2,570	3.95%	268	7:15	240	120	121	EB	16:45
271	C.R. 448A	0.2 Mi S OF C.R. 48	B	757	25	20	26	204	243	339	163	310	11.07%	34	8:15	28	16	12	NB	15:00
272	C.R. 448A	0.2 Mi N OF C.R. 48	B	819	24	20	26	3,795	3,933	4,512	6,802	4,829	6.21%	464	7:00	459	229	230	NB	16:45
273	TUSCANOOGA RD	.09 Mi N OF S.R. 50	B	104	15	22	24	2,208	2,182	2,203	2,507	2,498	3.13%	250	17:45	250	159	90	NB	17:45
274	MASCOTTE EMPIRE RD (S. SU	.32 Mi S OF S.R. 50	B	181	14	22	24	562	912	793	795	726	6.62%	71	16:00	71	35	36	NB	16:00
275	C.R. 50/SUNSET AV	0.03 Mi N OF S.R. 50	B	161	14	22	24	1,403	1,026	1,144	1,224	1,810	6.56%	152	17:30	152	62	89	NB	17:30
276	PALMETTO DR	0.043 Mi W OF C.R. 33	B	106	14	22	24	514	397	447	554	251	-16.44%	36	16:45	36	23	12	WB	16:45
277	UNDERPASS RD	0.036 Mi E OF C.R. 33	B	107	14	22	24	729	831	729	938	1,155	12.20%	119	17:15	119	59	60	WB	17:15
278	EAST AV	0.1 Mi N OF S.R. 50	A	834	19	22	26	5,043	5,606	5,703	5,699	5,103	0.29%	570	7:30	539	286	253	SB	15:00
279	MAIN ST	0.1 Mi N OF WASHINGTON ST	B	771	18	22	26	1,831	1,981	1,845	2,093	1,849	0.24%	174	7:30	171	98	74	SB	15:00
280	CITRUS TOWER BV	0.1 Mi S OF S.R. 50	A	146	28	22	26	11,986	13,799	15,687	17,410	17,355	9.70%	1,428	16:45	1,428	594	834	SB	16:45
281	HOOKS ST	0.12 W. OF CITRUS TOWER BV	A	482	29	22	26	3,813	6,588	7,154	9,157	9,367	25.19%	775	13:45	767	398	369	EB	17:00
282	EXCALIBUR RD	0.08 Mi S OF HOOKS ST	A	892	28	22	26	3,673	3,561	4,312	3,414	3,879	1.37%	566	6:30	351	183	168	SB	17:15
283	CITRUS TOWER BV	0.18 E. OF US 27	A	910	5	23	26	10,040	12,376	12,393	14,550	14,579	9.77%	1,210	17:00	1,210	497	713	WB	17:00
284	HAMMOCK RIDGE RD	0.21 W. OF US 27	A	897	5	23	26	9,982	13,124	12,516	14,427	15,472	11.58%	1,637	17:30	1,637	716	921	WB	17:30
285	LAKESHORE DR (CLERMONT)	0.14 E. OF HAMMOCK RIDGE ROAD	A	900	6	23	26	6,519	9,398	6,664	5,854	7,500	3.57%	672	17:15	672	416	256	WB	17:15
286	FOSGATE RD	0.19 Mi W OF GRASSY LAKE RD	B	895	8	22	26	1,424	1,571	2,196	2,117	2,758	17.98%	410	6:45	288	109	179	EB	15:00
287	STEVES RD	0.44 Mi W. OF CITRUS TOWER BV	A	886	29	22	26	4,863	5,529	5,637	5,715	6,300	6.69%	676	14:15	560	319	241	EB	17:00
288	CR 44A	0.17 MI N. OF CR 44A	C-1	823	5	19	27	1,632	1,661	1,817	1,945	1,935	4.35%	206	16:45	206	131	75	NB	16:45



## 2016 Lake County Annual Traffic Counts

MAP STA #	ROAD NAME	LOCATION	Map Sheet	TMS ID	S E C	T W P	R N G	ANNUAL ADJUSTED DAILY TRAFFIC (AADT)					5-YEAR ANNUAL AVERAGE GROWTH RATE PERCENT	ADJUSTED PEAK HR VOLUME 2016	BEGIN PEAK HOUR 2016	ADJUSTED P.M. PEAK HOUR VOLUME 2016 (3-7 pm reported as 15:00-19:00)				
								2012	2013	2014	2015	2016				Total	NB/EB	SB/WB	Pk Dir	Time
289	HOOKS ST	E. OF US 27	A	481	29	22	26	4,022	5,227	4,920	9,595	9,512	24.01%	840	14:30	778	382	396	WB	15:00
290	GRAND HIGHWAY	N. OF HOOKS ST	A	0	29	22	26	3,982	8,585	6,243	3,830	6,292	12.11%	552	16:45	552	303	249	NB	16:45
291	CR 48	AT SUMTER COUNTY LINE	B	225	7	21	24	2,043	2,003	2,218	1,429	2,778	7.98%	275	12:15	222	105	117	SB	15:30
292	CR 561A	WEST OF CR 455	B	132	27	21	26	*****	*****	1,496	1,675	1,579	N/A	171	7:00	143	75	69	WB	16:45
293	CR 50	EAST OF HANCOCK RD	B	157	16	22	26	*****	*****	9,591	6,847	9,026	N/A	923	17:00	923	561	361	WB	17:00
294	SIMON BROWN	EAST OF SR 33	B	0	7	22	24	*****	*****	462	566	541	N/A	63	7:00	62	41	21	WB	16:45
298	E ASHPAWA RD	WEST OF US27	B	0	36	21	25	*****	*****	*****	709	708	N/A	62	17:00	62	23	39	WB	17:00
299	HARTWOOD MARSH RD	.1Mi E HANCOCK	A	364	10	23	26	*****	*****	*****	16,478	12,479	N/A	1,178	17:00	1,178	742	436	WB	17:00
300	JOHNS LAKE RD	EAST OF HANCOCK RD	A	0	34	22	26	*****	*****	*****	413	610	N/A	52	9:00	52	26	25	EB	16:00
301	HARTLE RD	SOUTH OF SR50	A	0	26	22	26	*****	*****	*****	3,660	3,544	N/A	304	16:15	304	140	164	SB	16:15
302	SULLIVAN RD	EAST OF US27	B	0	6	22	26	*****	*****	*****	207	298	N/A	36	7:00	25	14	11	EB	18:00
303	E. DEWEY ROBBINS RD	WEST OF SR19	B	609	36	21	24	*****	*****	*****	600	1,961	N/A	194	16:15	194	74	120	SB	16:15
304	E. DEWEY ROBBINS RD	WEST OF SR19	B	0	2	21	25	*****	*****	*****	600	585	N/A	61	15:15	61	32	29	WB	15:15
305	DEWEY ROBBINS RD	EAST OF US27	B	0	36	20	24	*****	*****	*****	380	448	N/A	43	16:45	43	23	21	EB	16:45
306	SR46	EAST OF NORTH CR437	D	241	30	19	28	*****	*****	*****	16,087	16,861	N/A	1,450	16:30	1,450	741	709	WB	16:30
307	CR46A	SOUTH OF SR44	D	614	8	19	28	*****	*****	*****	7,237	8,047	N/A	713	16:45	713	446	268	NB	16:45
308	W LADY LAKE RD	EAST OF ARLINGTON	C	492	20	18	24	*****	*****	*****	1,705	1,742	N/A	171	17:00	171	56	115	WB	17:00
309	CHULA VISTA AV	BETWEEN RIO & SAN REMO	C	0	18	18	24	*****	*****	*****	2,503	2,678	N/A	337	14:30	275	149	126	SB	15:00
310	E. LADY LAKE RD	EAST OF US27/US441	C	494	21	18	24	*****	*****	*****	469	363	N/A	42	17:30	42	15	27	EB	17:30
311	SCRUB JAY LN	SOUTH OF FLORIDA TURNPIKE BRIDGE	B	0	32	21	26	*****	*****	*****	482	629	N/A	85	6:45	62	58	5	NB	16:15

\*\*\*\*\* - Data not available for that year

N/A = not available due to lack of previous years data

U/C Denotes station under construction during data collection period.

5 -Year Annual Average Percentage Growth Rate is computed as follows:

$$\text{"5-Year Annual Average Percentage Growth Rate} = (1 + (2016 \text{ AADT} - 2012 \text{ AADT}) / (2012 \text{ AADT}))^{(1/4)} - 1"$$

Stations Deleted from the program:

# 83

# 85

# 154