

# *2015 Lake County Annual Traffic Counts*



# LAKE COUNTY

---

# FLORIDA

Lake County Public Works  
Engineering Division  
437 Ardice Avenue  
Eustis, Florida 32726

## *2015 Lake County Traffic Counts for County Roads*

---



Lake County Public Works Building



Typical view of Lake County Annual Traffic Count Station setup



## *2015 Lake County Traffic Counts for County Roads*

---

### **Introduction**

Lake County Public Works Engineering Division is pleased to provide to all the Local Governments and Interested Others, the 2015 Annual Daily Traffic Counts for all of the Lake County maintained major roads. The 2015 Annual Daily Traffic Count Program is one of the responsibilities of the Lake County Public Works Engineering Division.

The Lake County Public Works Traffic Count Program is the enumeration of vehicular volumes taken at more than 290 count stations on roads within the County. Count reports produced by this program reflect daily and hourly volumes. Traffic counts are used by planners and engineers as a basic scale of comparison indicating the relative importance of various links in a road system. The traffic counts are also used to determine the Operating Level of Service on a given section of roadway.

The next series of pages are Traffic Count Station Location Maps and Traffic Tables. Every effort has been made to make the 2015 Annual Daily Traffic Counts Book as accurate as possible. Any errors or omissions should be brought to the attention of the Lake County Public Works staff.

The 2015 Annual Traffic Count Book is a public document. Copies will be made available for public inspection at Lake County Public Works Department Offices, 437 Ardice Avenue, Eustis, Florida. The 2015 Traffic Count Book will be provided to interested parties on request. Cost for reproduction may be charged, in accordance with Lake County policies.

Lake County Public Works wishes to acknowledge the Lake-Sumter Metropolitan Planning Organization for their contributions to the 2015 Lake County Traffic Count Program.

The 2015 Annual Lake County Traffic Counts booklet is available for download free on our website:

[http://www.lakecountyfl.gov/departments/public\\_works/engineering/traffic\\_count.aspx](http://www.lakecountyfl.gov/departments/public_works/engineering/traffic_count.aspx)

# 2015 LAKE COUNTY ANNUAL TRAFFIC COUNTS

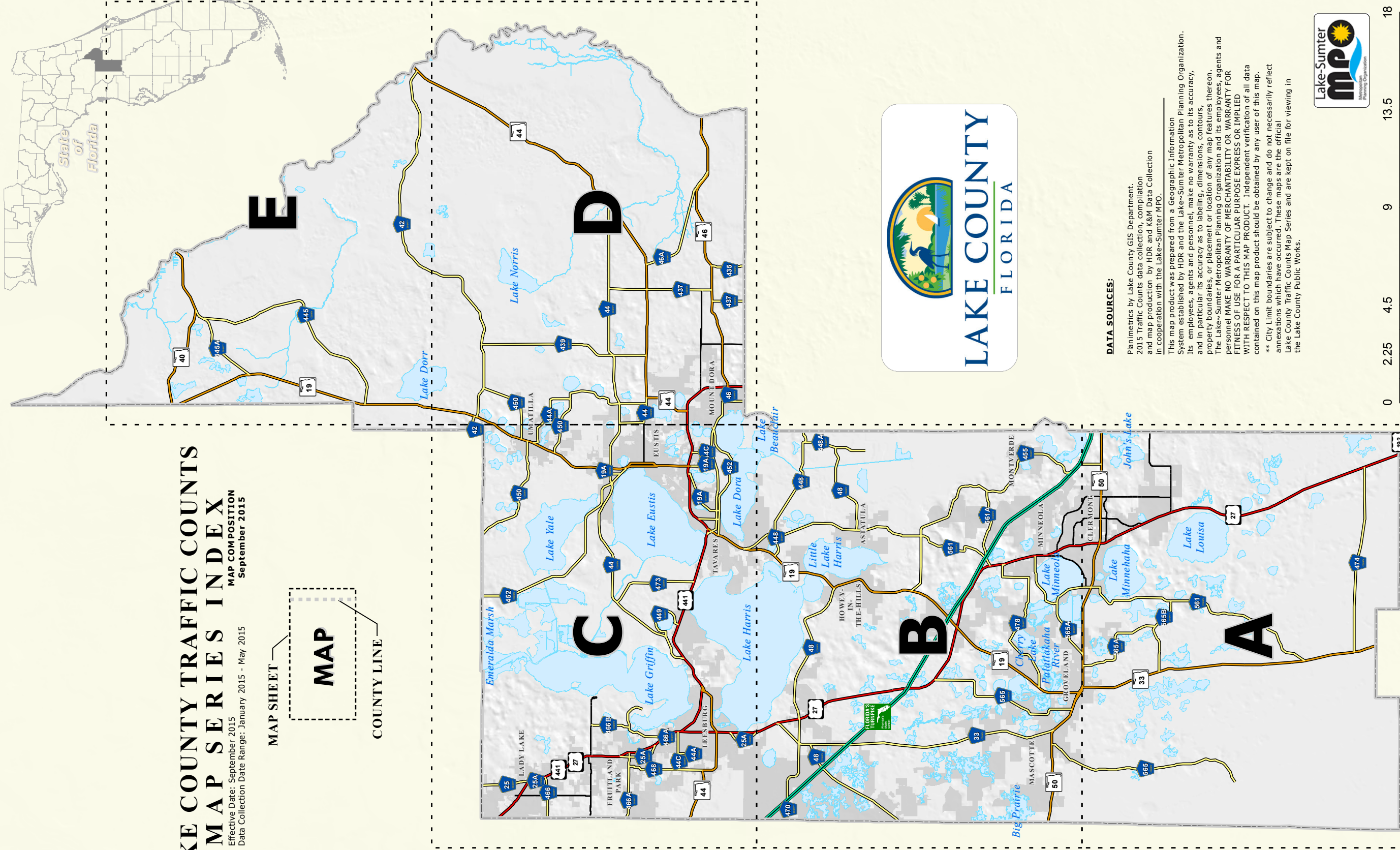
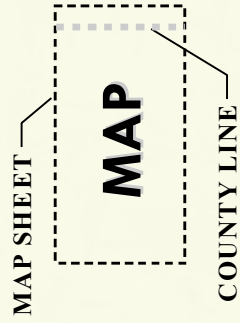
# M P O T R A F F I C C O U N T S P R O G R A M



## LAKE COUNTY TRAFFIC COUNTS MAP SERIES INDEX

Effective Date: September 2015  
Data Collection Date Range: January 2015 - May 2015

MAP COMPOSITION  
September 2015

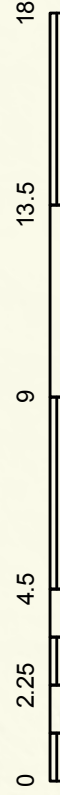


### DATA SOURCES:

Planimetrics by Lake County GIS Department.  
2015 Traffic Counts data collection, compilation  
and map production by HDR and K&M Data Collection  
in cooperation with the Lake-Sumter MPO.

This map product was prepared from a Geographic Information System established by HDR and the Lake-Sumter Metropolitan Planning Organization. Its employees, agents and personnel make no warranty as to its accuracy, and in particular its accuracy as to labeling, dimensions, contours, property boundaries, or placement or location of any map features thereon. The Lake-Sumter Metropolitan Planning Organization and its employees, agents and personnel MAKE NO WARRANTY OF MERCHANTABILITY OR WARRANTY FOR FITNESS OF USE FOR A PARTICULAR PURPOSE EXPRESS OR IMPLIED WITH RESPECT TO THIS MAP PRODUCT. Independent verification of all data contained on this map product should be obtained by any user of this map.

\*\* City Limit boundaries are subject to change and do not necessarily reflect annexations which have occurred. These maps are the official Lake County Traffic Counts Map Series and are kept on file for viewing in the Lake County Public Works.



1 INCH EQUALS 4.5 MILES







# 2015 LAKE COUNTY ANNUAL TRAFFIC COUNTS MAP SERIES



LAKE COUNTY FLORIDA

**LEGEND**

- Station ID
- Traffic Count Station Locations
- County Road
- State Road
- US Highway
- Interstate
- Turnpike
- Active Railroad
- Water Body
- County Boundary

**MAP**

MAP SHEET COUNTY LINE

**Incorporated Area**

	Astatula		Leesburg
	Clermont		Mascotte
	Eustis		Minneola
	Fruitland Park		Montverde
	Groveland		Mount Dora
	Howey-In-The-Hills		Umatilla
	Lady Lake		

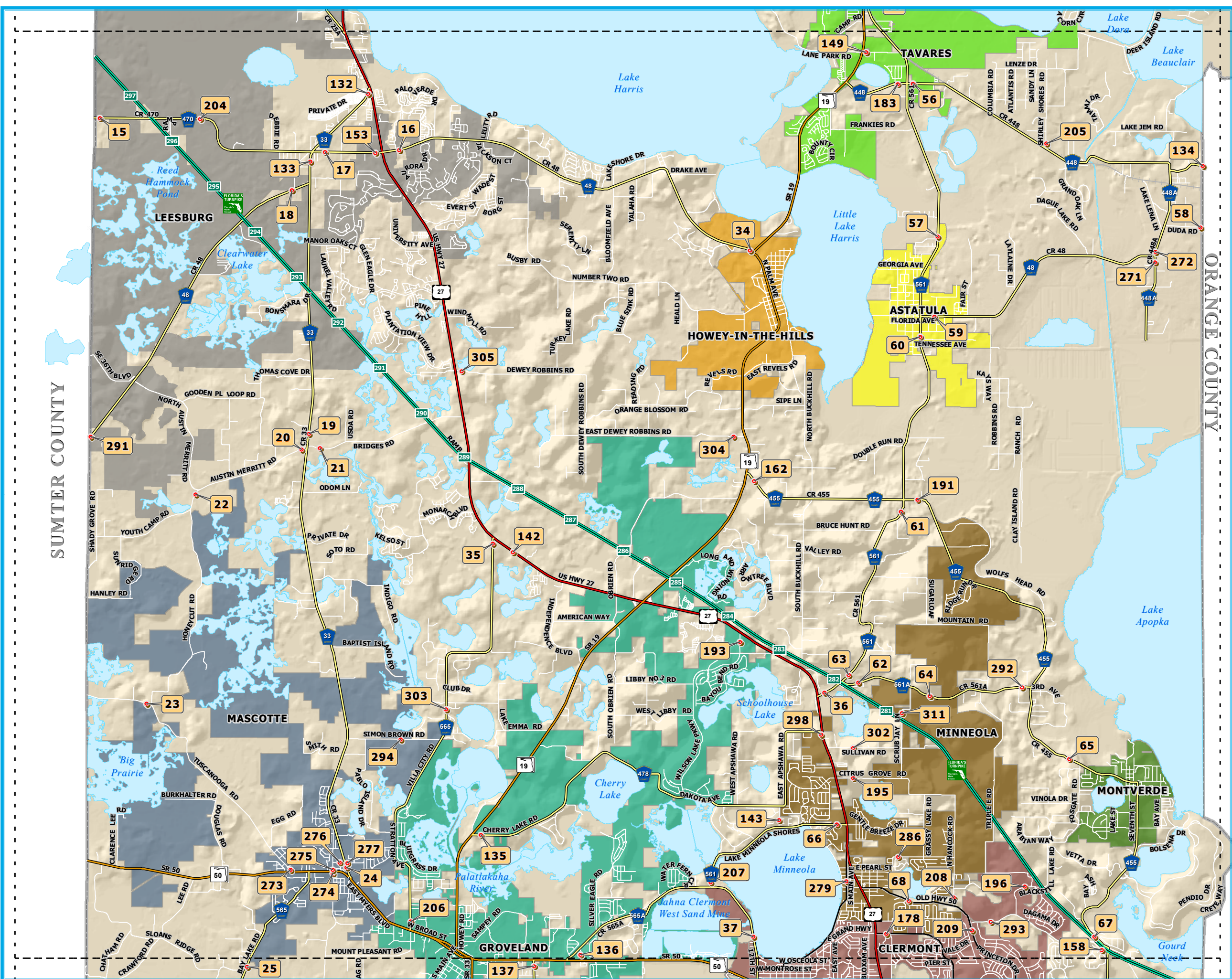
**DATA SOURCES:**  
 Planimetrics by Lake County GIS Department.  
 2015 Traffic Counts data collection, compilation and map production by HDR and K&M Data Collection in cooperation with the Lake-Sumter MPO.

This map product was prepared from a Geographic Information System established by HDR and the Lake-Sumter Metropolitan Planning Organization. Its employees, agents and personnel, make no warranty as to its accuracy, and in particular its accuracy as to labeling, dimensions, contours, property boundaries, or placement or location of any map features thereon. The Lake-Sumter Metropolitan Planning Organization and its employees, agents and personnel MAKE NO WARRANTY OF MERCHANTABILITY OR WARRANTY FOR FITNESS FOR USE FOR A PARTICULAR PURPOSE EXPRESS OR IMPLIED WITH RESPECT TO THIS MAP PRODUCT. Independent verification of all data contained on this map product should be obtained by any user of this map.

**MAP SERIES INDEX**

MAP SHEET **B**

North arrow and Lake-Sumter MPO logo.





# 2015 LAKE COUNTY ANNUAL TRAFFIC COUNTS MAP SERIES



LAKE COUNTY FLORIDA

**LEGEND**

- Station ID
- Traffic Count Station Locations
- County Road
- State Road
- US Highway
- Interstate
- Turnpike
- Active Railroad
- Water Body
- County Boundary

**Incorporated Area**

	Astatula		Leesburg
	Clermont		Mascotte
	Eustis		Minneola
	Fruitland Park		Montverde
	Groveland		Mount Dora
	Howey-In-The-Hills		Tavares
	Lady Lake		Umatilla

**DATA SOURCES:**  
 Planimetrics by Lake County GIS Department.  
 2015 Traffic Counts data collection, compilation and map production by HDR and K&M Data Collection in cooperation with the Lake-Summer MPO.

This map product was prepared from a Geographic Information System established by HDR and the Lake-Summer Metropolitan Planning Organization. Its employees, agents and personnel, make no warranty as to its accuracy, and in particular its accuracy as to labeling, dimensions, contours, property boundaries, or placement or location of any map features thereon. The Lake-Summer Metropolitan Planning Organization and its employees, agents and personnel MAKE NO WARRANTY OF MERCHANTABILITY OR WARRANTY FOR FITNESS OF USE FOR A PARTICULAR PURPOSE EXPRESS OR IMPLIED WITH RESPECT TO THIS MAP PRODUCT. Independent verification of all data contained on this map product should be obtained by any user of this map.

**MAP SERIES INDEX**

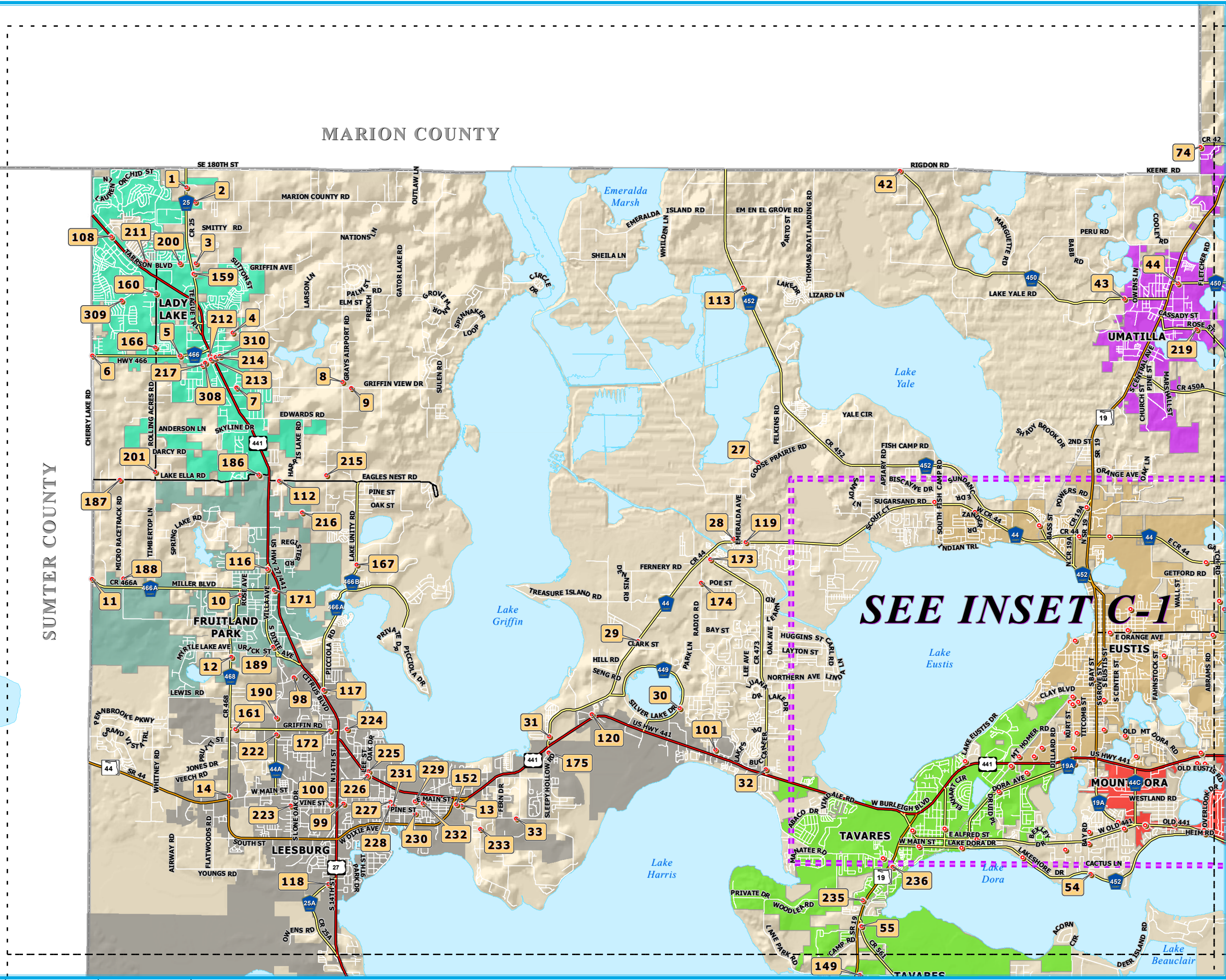
**MAP SHEET C**

Lake-Summer MPO Metropolitan Planning Organization

MARION COUNTY

SUMTER COUNTY

SEE INSET C-1



1 Inch equals 1.5 Miles



# 2015 LAKE COUNTY ANNUAL TRAFFIC COUNTS MAP SERIES



LAKE COUNTY FLORIDA

**LEGEND**

- Station ID (Red dot with number)
- Traffic Count Station Location (Red dot)
- County Road (Blue line)
- State Road (Yellow line)
- US Highway (Red line)
- Interstate (Blue and red shield)
- Turnpike (Green line with 'T' shield)
- Active Railroad (Black line with cross-ticks)
- Water Body (Blue area)
- County Boundary (Grey outline)

**Incorporated Area**

	Astatula		Leesburg
	Clermont		Mascotte
	Eustis		Minneola
	Fruitland Park		Montverde
	Groveland		Mount Dora
	Howey-In-The-Hills		Tavares
	Lady Lake		Umatilla

**DATA SOURCES:**  
 Planimetrics by Lake County GIS Department.  
 2015 Traffic Counts data collection, compilation and map production by HDR and K&M Data Collection in cooperation with the Lake-Sumter MPO.

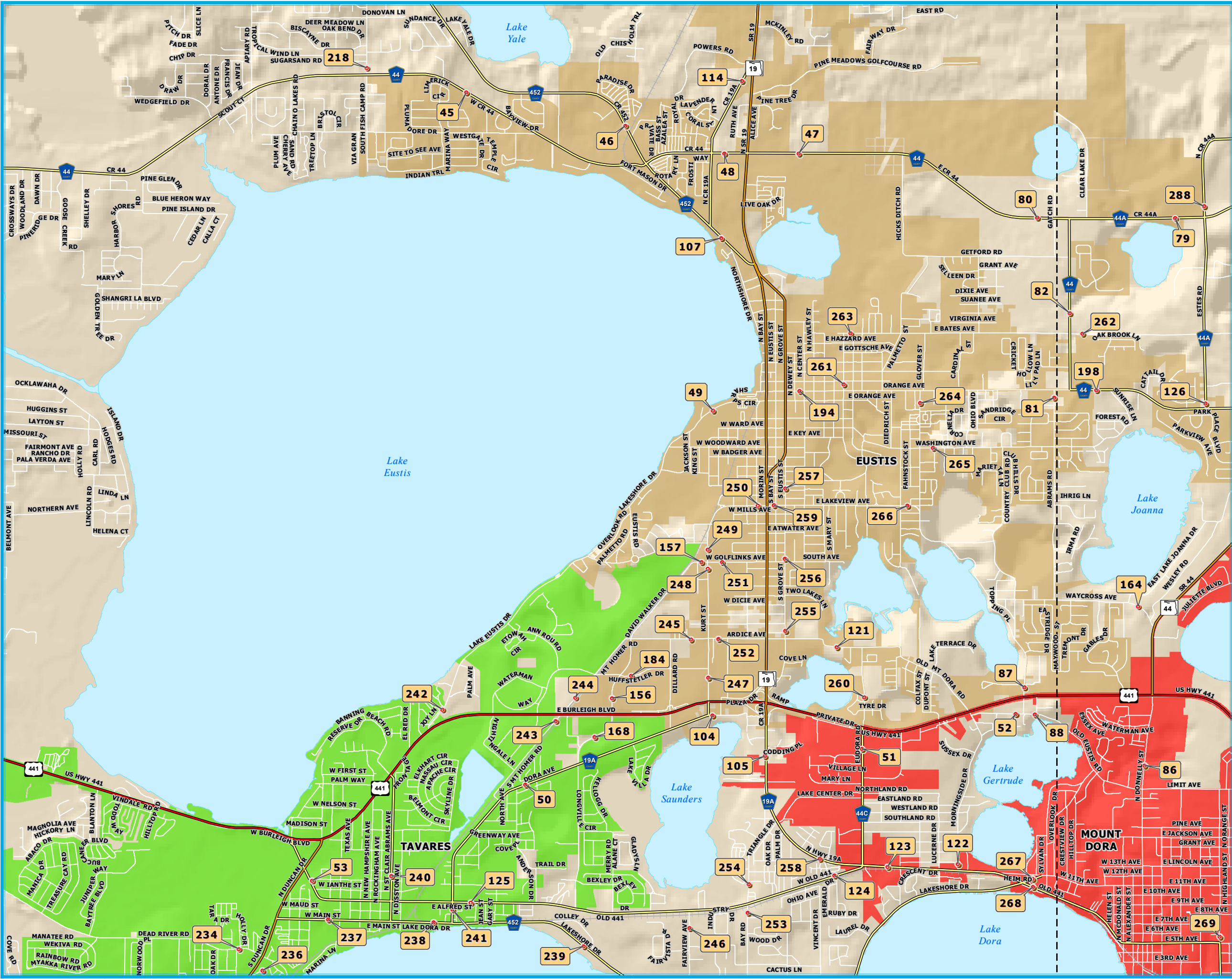
This map product was prepared from a Geographic Information System established by HDR and the Lake-Sumter Metropolitan Planning Organization. Its employees, agents and personnel, make no warranty as to its accuracy, and in particular its accuracy as to labeling, dimensions, contours, property boundaries, or placement or location of any map features thereon. The Lake-Sumter Metropolitan Planning Organization and its employees, agents and personnel MAKE NO WARRANTY OF MERCHANTABILITY OR WARRANTY FOR FITNESS FOR USE FOR A PARTICULAR PURPOSE EXPRESS OR IMPLIED WITH RESPECT TO THIS MAP PRODUCT. Independent verification of all data contained on this map product should be obtained by any user of this map.

**MAP SERIES INDEX**

**MAP INSET**

**C-1**

Lake-Sumter mpo Metropolitan Planning Organization





# 2015 LAKE COUNTY ANNUAL TRAFFIC COUNTS MAP SERIES



LAKE COUNTY FLORIDA

**LEGEND**

- Station ID
- Traffic Count Station Locations
- County Road
- State Road
- US Highway
- Interstate
- Turnpike
- Active Railroad
- Water Body
- County Boundary

**MAP SHEET**  
COUNTY LINE

**MAP**

**Incorporated Area**

	Astatula		Leesburg
	Clermont		Mascotte
	Eustis		Minneola
	Fruitland Park		Montverde
	Groveland		Mount Dora
	Howey-In-The-Hills		Tavares
	Lady Lake		Umatilla

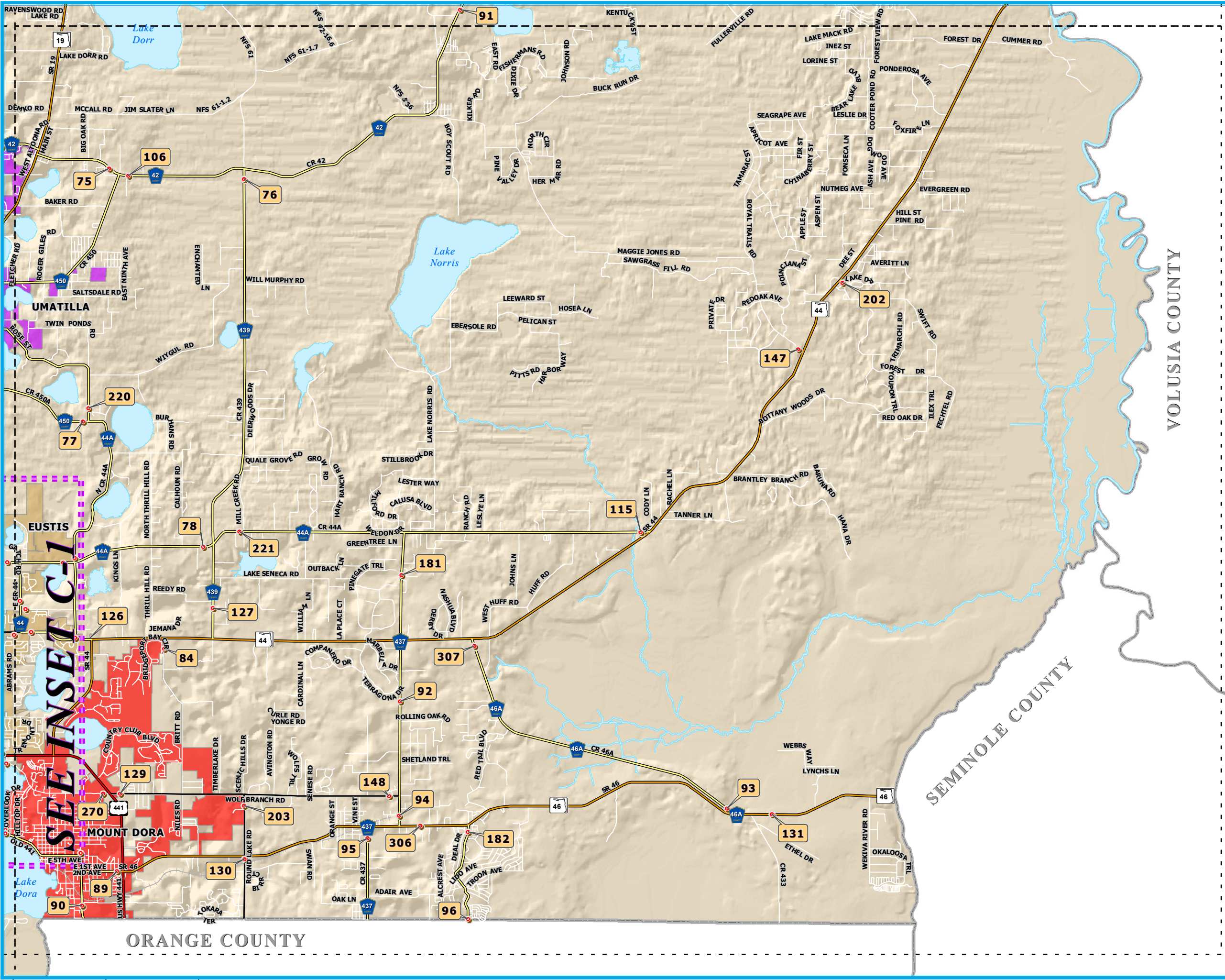
**DATA SOURCES:**  
Planimetrics by Lake County GIS Department.  
2015 Traffic Counts data collection, compilation and map production by HDR and K&M Data Collection in cooperation with the Lake-Sumter MPO.

This map product was prepared from a Geographic Information System established by HDR and the Lake-Sumter Metropolitan Planning Organization. Its employees, agents and personnel, make no warranty as to its accuracy, and in particular its accuracy as to labeling, dimensions, contours, property boundaries, or placement or location of any map features thereon. The Lake-Sumter Metropolitan Planning Organization and its employees, agents and personnel MAKE NO WARRANTY OF MERCHANTABILITY OR WARRANTY FOR FITNESS OF USE FOR A PARTICULAR PURPOSE EXPRESS OR IMPLIED WITH RESPECT TO THIS MAP PRODUCT. Independent verification of all data contained on this map product should be obtained by any user of this map.

**MAP SERIES INDEX**

**MAP SHEET D**

Lake-Sumter MPO Metropolitan Planning Organization





# 2015 LAKE COUNTY ANNUAL TRAFFIC COUNTS MAP SERIES



LAKE COUNTY FLORIDA

**LEGEND**

- Station ID
- Traffic Count Station Locations
- County Road
- State Road
- US Highway
- Interstate
- Turnpike
- Active Railroad
- Water Body
- County Boundary

**MAP SHEET**  
COUNTY LINE

**Incorporated Area**

Astatula	Leesburg
Clermont	Mascotte
Eustis	Minneola
Fruitland Park	Montverde
Groveland	Mount Dora
Howey-In-The-Hills	Tavares
Lady Lake	Umatilla

**DATA SOURCES:**  
Planimetrics by Lake County GIS Department.  
2015 Traffic Counts data collection, compilation and map production by HDR and K&M Data Collection in cooperation with the Lake-Sumter MPO.

This map product was prepared from a Geographic Information System established by HDR and the Lake-Sumter Metropolitan Planning Organization. Its employees, agents and personnel, make no warranty as to its accuracy, and in particular its accuracy as to labeling, dimensions, contours, property boundaries, or placement or location of any map features thereon. The Lake-Sumter Metropolitan Planning Organization and its employees, agents and personnel MAKE NO WARRANTY OF MERCHANTABILITY OR WARRANTY FOR FITNESS OF USE FOR A PARTICULAR PURPOSE EXPRESS OR IMPLIED WITH RESPECT TO THIS MAP PRODUCT. Independent verification of all data contained on this map product should be obtained by any user of this map.

**MAP SERIES INDEX**

**MAP SHEET E**

North arrow and Lake-Sumter MPO logo.



0 0.75 1.5 3 1 Inch equals 1.5 Miles



## 2015 Lake County Annual Traffic Counts

MAP STA #	ROAD NAME	LOCATION	Map Sheet	TMS ID	S E C	T W P	R N G	ANNUAL ADJUSTED DAILY TRAFFIC (AADT)					5-YEAR ANNUAL AVERAGE GROWTH RATE PERCENT	ADJUSTED PEAK HR VOLUME 2015	BEGIN PEAK HOUR 2015	ADJUSTED P.M. PEAK HOUR VOLUME (3-7 pm reported as 15:00-19:00) 2015				
								2011	2012	2013	2014	2015				Total	NB/EB	SB/WB	Pk Dir	Time
1	C.R. 25	AT MARION CO LINE	C	366	5	18	24	7,533	8,123	7,034	8,608	9,609	6.27%	886	17:00	886	601	285	NB	17:00
2	MARION COUNTY RD	0.15 Mi E OF C.R. 25	C	373	5	18	24	2,053	2,106	1,788	1,803	2,232	2.11%	208	17:00	208	92	116	EB	17:00
3	GRIFFIN AV	0.05 Mi E OF C.R. 25	C	390	8	18	24	2,295	2,066	2,336	2,336	2,408	1.21%	226	15:15	226	130	96	EB	15:15
4	LAKE GRIFFIN RD	0.27 Mi W OF CAROLINA AV	C	744	16	18	24	2,868	3,085	2,869	3,027	3,234	3.05%	331	16:45	331	225	105	WB	16:45
5	C.R. 466	0.10 Mi W OF CLAY AV	C	619	17	18	24	12,381	12,694	13,059	14,490	16,427	7.32%	1,533	15:00	1,533	792	741	EB	15:00
6	C.R. 466	AT SUMTER CO LINE	C	381	18	18	24	21,560	21,835	20,342	24,272	25,598	4.39%	2,345	14:15	2,332	1,152	1,180	WB	15:00
7	GRIFFIN VIEW DR	0.08 Mi E OF U.S. 27/U.S. 441	C	384	21	18	24	3,799	4,040	4,228	4,124	5,358	8.98%	499	7:15	442	284	158	EB	17:30
8	GRAYS AIRPORT RD	0.10 Mi N OF GRIFFIN VIEW DR	C	399	22	18	24	2,070	1,919	1,992	2,017	2,200	1.54%	221	17:15	221	126	95	NB	17:15
9	GRIFFIN VIEW DR	0.12 Mi E OF GRAYS AIRPORT RD	C	386	23	18	24	1,669	1,506	1,493	1,673	1,801	1.92%	173	7:00	167	112	55	EB	17:00
10	C.R. 468	0.04 Mi N OF BERCKMAN ST	C	305	4	19	24	2,860	3,490	3,276	3,216	5,105	15.58%	464	7:30	437	141	297	SB	15:00
11	C.R. 466A	AT SUMTER CO LINE	C	689	6	19	24	10,874	11,669	13,504	15,281	17,819	13.14%	1,633	15:15	1,633	818	814	EB	15:15
12	C.R. 468	0.08 Mi S OF MYRTLE LAKE/URICK ST	C	303	9	19	24	5,351	6,259	5,992	5,781	6,037	3.06%	497	7:30	496	264	232	SB	15:15
13	SUNNYSIDE DR	0.09 Mi S OF MAIN ST (S.R. 44)	C	751	25	19	24	3,305	3,204	3,400	3,467	3,326	0.16%	342	17:15	342	224	118	NB	17:15
14	C.R. 468	0.09 Mi N OF S.R. 44	C	302	28	19	24	6,541	7,446	7,375	6,667	5,158	-5.77%	432	15:15	432	266	166	NB	15:15
15	C.R. 470	0.06 Mi E OF SUMTER CO LINE	B	908	7	20	24	5,233	5,094	5,465	5,813	6,771	6.65%	566	7:00	558	333	225	EB	15:45
16	C.R. 48	0.25 Mi E OF U.S. 27	B	97	14	20	24	8,445	7,947	7,974	8,765	6,895	-4.94%	594	15:45	594	307	287	EB	15:45
17	C.R. 48	0.18 Mi E OF C.R. 33	B	219	15	20	24	6,738	6,086	6,048	4,978	6,580	-0.59%	529	16:15	529	271	259	EB	16:15
18	C.R. 48	0.12 Mi W OF C.R. 33	B	224	22	20	24	2,385	2,204	2,242	2,221	2,019	-4.08%	182	16:15	182	77	105	WB	16:15
19	C.R. 33	0.06 Mi N OF AUSTIN MERRITT RD	B	231	10	21	24	3,352	3,355	3,444	3,259	2,766	-4.69%	220	6:45	220	88	132	SB	16:45
20	AUSTIN MERRITT RD	0.07 Mi W OF C.R. 33	B	679	10	21	24	1,076	1,038	1,060	1,131	1,008	-1.61%	86	7:00	82	23	59	EB	17:30
21	BRIDGES RD	0.08 Mi E OF C.R. 33	B	669	10	21	24	658	786	837	789	1,201	16.24%	115	15:00	115	67	48	WB	15:00
22	YOUTH CAMP RD	0.48 Mi W OF AUSTIN MERRITT RD	B	678	17	21	24	742	775	799	825	1,156	11.71%	118	15:00	118	65	53	WB	15:00
23	TUSCANOOGA RD	0.13 Mi W OF HONEYCUTT RD	B	101	31	21	24	428	397	458	503	527	5.36%	53	17:15	53	24	29	WB	17:15
24	C.R. 33	0.10 Mi N OF S.R. 50	B	235	14	22	24	4,513	4,470	4,337	3,937	5,006	2.62%	433	17:00	433	231	202	NB	17:00
25	C.R. 565	0.08 Mi N OF SLOANS RIDGE RD	A	182	21	22	24	609	598	694	622	685	2.99%	74	16:15	74	29	45	SB	16:15
26	EMPIRE CHURCH RD	0.10 Mi S OF ANDERSON ST	A	187	25	22	24	1,289	1,137	1,341	1,162	1,335	0.89%	115	16:30	120	41	79	SB	16:30
27	GOOSE PRAIRIE RD	0.12 Mi W OF FELKINS RD	C	570	25	18	25	2,224	2,277	2,143	2,169	2,275	0.57%	247	16:30	247	92	155	EB	16:30
28	EMERALDA AV	0.05 Mi N OF C.R. 44	C	326	35	18	25	3,227	3,191	3,378	3,191	3,457	1.73%	322	17:30	322	191	131	NB	17:30
29	C.R. 44	0.10 Mi S OF TREASURE ISLAND RD	C	339	9	19	25	8,532	9,299	8,430	8,082	9,213	1.94%	829	16:45	829	240	589	NB	16:45
30	C.R. 449 (SILVER LAKE ROAD)	0.37 Mi S OF MORNINGSIDE DR	C	641	15	19	25	2,497	2,532	2,317	2,104	2,158	-3.58%	205	15:45	205	61	144	NB	15:45
31	C.R. 44	0.55 Mi N OF U.S. 441	C	329	20	19	25	10,361	8,877	9,819	9,885	10,604	0.58%	894	16:30	894	584	310	NB	16:30
32	C.R. 473	0.21 Mi N OF U.S. 441	C	826	24	19	25	12,895	12,939	12,696	13,030	12,622	-0.53%	1,099	16:00	1,099	686	412	NB	16:00
33	SUNNYSIDE DR	0.04 Mi W OF TOMATO HILL RD	C	868	29	19	25	1,848	1,330	1,878	1,955	1,196	-10.31%	139	17:15	139	45	94	EB	17:15
34	C.R. 48	0.18 Mi W OF S.R. 19	B	99	23	20	25	7,321	6,520	6,811	7,252	8,181	2.82%	662	15:30	662	357	305	WB	15:30
35	C.R. 565	0.07 Mi S OF U.S. 27	B	610	18	21	25	873	843	915	978	1,189	8.03%	120	16:30	120	41	79	SB	16:30
36	C.R. 561/C.R. 561A	0.09 Mi E OF U.S. 27	B	125	36	21	25	7,619	7,132	7,465	7,664	8,680	3.31%	837	17:00	837	439	398	EB	17:00
37	C.R. 561	0.16 Mi S OF BRIDGE #114046	B	781	23	22	25	2,839	2,746	2,483	2,886	3,073	2.00%	275	17:30	275	139	136	NB	17:30
38	LAKESHORE DR (CLERMONT)	0.30 Mi W OF HAMMOCK RIDGE RD	A	915	1	23	25	13,463	UC	13,226	11,897	17,097	6.16%	1,507	17:00	1,507	566	941	WB	17:00
39	LAKESHORE DR (CLERMONT)	0.06 Mi E OF C.R. 561	A	165	14	23	25	2,535	1,837	1,930	1,942	4,349	14.45%	404	17:15	404	110	294	WB	17:15
40	LAKE ERIE RD	0.06 Mi W OF S.R. 33	A	361	20	23	25	647	655	642	626	713	2.45%	70	17:15	70	50	20	WB	17:15
41	C.R. 474	0.07 Mi E OF S.R. 33	A	94	21	24	25	3,332	2,404	2,492	2,702	3,853	3.70%	295	7:15	235	79	156	WB	17:00
42	C.R. 450	0.18 Mi W OF ST THOMAS AV, AT MARION C	C	76	5	18	26	1,512	2,310	1,467	1,414	1,905	5.94%	170	16:00	170	109	61	EB	16:00
43	C.R. 450	0.06 Mi W OF OWENS LN	C	77	11	18	26	2,375	1,390	2,151	2,098	2,454	0.82%	209	16:30	209	141	68	WB	16:30
44	C.R. 450	0.08 Mi E OF SR 19	C	78	12	18	26	4,741	4,753	4,524	4,527	6,837	9.59%	646	17:00	646	280	366	WB	17:00
45	C.R. 44	0.39 Mi W OF GRAND ISLAND SHORES RD	C-1	341	33	18	26	11,551	11,161	12,583	11,029	12,045	1.05%	1,063	17:15	1,063	577	486	EB	17:15
46	C.R. 452	0.16 Mi N OF C.R. 44	C-1	318	34	18	26	7,995	9,128	14,189	7,681	8,414	1.28%	759	16:30	759	457	302	NB	16:30
47	C.R. 44	0.14 Mi E OF SR 19	C-1	814	35	18	26	10,200	9,407	12,943	9,799	10,294	0.23%	935	16:45	935	441	494	WB	16:45
48	C.R. 44	0.15 Mi W OF SR 19	C-1	735	35	18	26	13,245	10,725	12,545	12,170	12,274	-1.88%	1,124	17:00	1,124	569	555	WB	17:00
49	LAKESHORE DR (EUSTIS)	0.09 Mi E OF KING ST	C-1	378	11	19	26	5,214	5,037	5,043	5,171	3,440	-9.87%	416	15:30	416	214	202	EB	15:30

## 2015 Lake County Annual Traffic Counts

MAP STA #	ROAD NAME	LOCATION	Map Sheet	TMS ID	S E C	T W P	R N G	ANNUAL ADJUSTED DAILY TRAFFIC (AADT)					5-YEAR ANNUAL AVERAGE GROWTH RATE PERCENT	ADJUSTED PEAK HR VOLUME 2015	BEGIN PEAK HOUR 2015	ADJUSTED P.M. PEAK HOUR VOLUME (3-7 pm reported as 15:00-19:00) 2015				
								2011	2012	2013	2014	2015				Total	NB/EB	SB/WB	Pk Dir	Time
								50	C.R. 19A	0.05 Mi E OF DRUID PL.	C-1	734				21	19	26	4,969	4,963
51	C.R. 44C (EUDORA RD)	0.32 Mi S OF U.S. 441	C-1	636	23	19	26	10,281	9,411	9,142	9,648	10,463	0.44%	841	17:00	841	444	397	SB	17:00
52	OLD EUSTIS RD	0.05 Mi W OF E CROOKED LAKE RD	C-1	51	24	19	26	1,633	1,552	1,407	1,553	1,473	-2.54%	150	17:00	150	74	76	EB	17:00
53	OLD 441/SR 500A (ALFRED)	0.11 Mi E OF S.R. 19	C-1	714	29	19	26	9,288	9,386	9,279	16,495	7,283	-5.90%	910	16:30	910	307	604	EB	16:30
54	C.R. 452 (LAKESHORE DR)	0.13 Mi E OF BAY RD	C	622	35	19	26	1,683	1,629	1,440	1,481	1,626	-0.86%	183	16:45	183	104	80	EB	16:45
55	C.R. 561	0.26 Mi S OF S.R. 19	C	613	6	20	26	11,447	11,746	11,446	10,380	10,585	-1.94%	981	16:45	981	500	481	NB	16:45
56	C.R. 448	0.12 Mi E OF C.R. 561	B	69	8	20	26	6,382	6,642	7,070	7,625	8,192	6.44%	811	16:45	811	330	481	WB	16:45
57	C.R. 561	0.07 Mi S OF WOODLAND DR	B	118	20	20	26	6,932	6,694	6,779	7,393	8,032	3.75%	774	7:30	737	332	405	SB	16:30
58	DUDA RD	0.16 Mi E OF C.R. 448A	B	590	24	20	26	4,427	4,974	3,851	4,615	8,558	17.92%	761	16:45	761	216	546	WB	16:45
59	C.R. 48	0.15 Mi E OF C.R. 561	B	356	32	20	26	4,263	4,582	4,694	5,448	7,855	16.51%	1,066	7:30	787	374	412	WB	15:00
60	C.R. 561	0.55 Mi S OF C.R. 48	B	719	32	20	26	7,765	7,351	8,011	8,772	9,150	4.19%	889	7:15	861	509	352	NB	16:45
61	C.R. 561	0.13 Mi S OF C.R. 455	B	121	17	21	26	5,021	4,909	4,978	6,147	6,213	5.47%	624	16:45	624	486	139	SB	16:45
62	C.R. 561A	0.18 Mi E OF C.R. 561	B	596	30	21	26	1,134	1,099	1,214	1,397	1,544	8.03%	174	7:00	161	76	85	EB	16:45
63	C.R. 561	0.04 Mi N OF C.R. 561A	B	0	30	21	26	5,675	5,698	5,601	6,289	6,582	3.77%	648	17:00	648	335	314	NB	17:00
64	C.R. 561A	0.35 Mi E OF SCRUB JAY RD	B	596	32	21	26	1,138	1,052	1,214	1,378	1,570	8.38%	171	7:15	149	71	78	EB	16:45
65	C.R. 455	0.05 Mi W OF FOSGATE RD	B	86	3	22	26	2,478	2,293	2,842	2,601	2,817	3.26%	312	7:00	289	159	130	EB	17:15
66	C.R. 561 (LAKE MINNEOLA SHO)	0.11 Mi W OF U.S. 27	B	602	7	22	26	7,065	7,021	7,903	7,561	8,743	5.47%	770	17:00	770	343	427	WB	17:00
67	C.R. 455	0.10 Mi N OF MAGNOLIA CREEK LN	B	87	14	22	26	5,132	5,063	5,515	6,298	6,175	4.73%	707	7:00	628	303	325	SB	15:00
68	C.R. 50	0.05 Mi W OF PARK TRAIL DR	B	158	17	22	26	9,168	9,118	9,478	10,129	9,478	0.84%	840	16:45	840	479	361	WB	16:45
69	C.R. 50	0.06 Mi W OF ORANGE CO LINE	A	155	25	22	26	6,309	5,134	5,192	6,100	5,051	-5.41%	664	16:45	664	140	525	WB	16:45
70	C.R. 455	0.25 Mi N OF S.R. 50	A	89	26	22	26	7,033	6,271	6,735	7,336	7,655	2.14%	677	7:00	622	368	254	NB	16:45
71	ANDERSON HILL RD	0.11 Mi E OF LAKESHORE DR	A	694	31	22	26	1,584	1,705	1,831	1,578	1,722	2.11%	160	17:15	160	112	48	WB	17:15
72	C.R. 445A	0.18 Mi E OF S.R. 19	E	269	8	16	27	1,237	1,040	961	1,012	1,260	0.47%	103	16:30	103	56	47	EB	16:30
73	C.R. 445	0.47 Mi E OF DEER RD EAST	E	644	4	17	27	560	639	453	451	659	4.14%	61	13:30	61	29	31	WB	16:30
74	C.R. 42	AT MARION CO LINE	C	408	31	17	27	3,324	3,180	3,515	3,334	3,726	2.89%	324	17:00	324	171	153	EB	17:00
75	C.R. 42	0.14 Mi W OF C.R. 450	D	411	32	17	27	U/C	2,305	2,738	2,583	3,017	6.96%	278	17:00	612	275	337	NB	17:00
76	C.R. 439	0.10 Mi S OF C.R. 42	D	349	3	18	27	2,214	2,375	2,422	2,343	2,501	3.09%	244	16:00	244	95	149	NB	16:00
77	C.R. 450A	0.06 Mi W OF C.R. 44A NORTH	D	81	20	18	27	1,148	1,162	1,105	1,133	1,303	3.22%	136	16:15	136	88	48	WB	16:15
78	C.R. 44A	0.18 Mi W OF C.R. 439	D	351	34	18	27	3,968	3,832	4,114	3,789	4,174	1.27%	381	7:00	367	169	198	WB	16:45
79	C.R. 44A	0.10 Mi W OF ESTES RD	C-1	639	5	19	27	4,641	4,537	4,731	4,277	4,879	1.26%	431	16:15	431	225	206	WB	16:15
80	C.R. 44	0.13 Mi W OF C.R. 44/C.R. 44A	C-1	817	6	19	27	9,251	9,515	9,312	9,005	9,326	0.20%	858	16:45	858	470	388	WB	16:45
81	ABRAMS RD	0.06 Mi S OF S.R. 44	C-1	731	7	19	27	4,258	3,846	4,148	3,962	6,052	9.19%	612	17:00	612	275	337	NB	17:00
82	C.R. 44	0.10 Mi N OF S.R. 44	C-1	344	7	19	27	7,602	7,917	6,891	6,784	7,596	-0.02%	708	17:00	708	414	294	NB	17:00
83	C.R. 44B	0.21 Mi S OF S.R. 44																		
84	BRITT RD	0.06 Mi S OF S.R. 44	D	665	9	19	27	1,650	1,681	1,780	1,878	2,326	8.96%	346	7:15	252	84	168	NB	16:15
85	C.R. 44B	0.16 Mi N OF U.S. 441																		
86	DONNELLY ST.	0.46 Mi S OF U.S. 441	C-1	345	19	19	27	10,390	9,937	10,354	10,446	9,983	-0.99%	910	12:00	790	417	373	NB	15:45
87	EAST CROOKED LAKE RD	0.08 Mi N OF U.S. 441	C-1	584	19	19	27	4,173	3,984	4,224	4,367	4,291	0.70%	390	17:00	390	260	129	NB	17:00
88	OLD EUSTIS RD	0.05 Mi E OF E CROOKED LK RD	C-1	51	19	19	27	1,634	1,586	1,414	1,521	1,528	-1.66%	152	17:00	152	80	72	WB	17:00
89	C.R. 46 (SANFORD RD)	0.18 Mi W OF U.S. 441	D	805	32	19	27	5,809	5,507	5,809	6,533	7,311	5.92%	612	16:30	612	297	316	WB	16:30
90	OLD 441/SR. 500A (MT DORA)	0.03 Mi S OF ROBIE AV	D	545	32	19	27	3,979	4,210	4,138	4,005	11,692	30.93%	981	15:00	981	487	494	SB	15:00
91	C.R. 42	0.15 Mi N OF RANCHO LN	E	417	20	17	28	2,755	2,510	2,569	2,452	2,582	-1.61%	234	15:30	234	114	120	WB	15:30
92	C.R. 437	0.09 Mi S OF S.R. 44	D	249	7	19	28	5,954	5,991	6,559	6,508	7,778	6.91%	766	7:30	745	287	458	SB	17:00
93	C.R. 46A	0.11 Mi N OF S.R. 46	D	615	25	19	28	6,812	6,826	6,905	6,752	6,568	-0.91%	673	16:45	673	465	208	NB	16:45
94	C.R. 437	0.08 Mi N OF S.R. 46	D	251	30	19	28	8,929	9,082	9,073	9,369	13,317	10.51%	1,383	16:45	1,383	640	743	SB	16:45
95	C.R. 437	0.17 Mi S OF S.R. 46	D	252	30	19	28	6,724	6,709	7,240	7,261	8,761	6.84%	843	17:15	843	340	503	NB	17:15
96	C.R. 435	AT ORANGE CO LINE	D	651	32	19	28	4,877	5,049	5,121	4,761	5,319	2.19%	578	17:00	578	316	261	WB	17:00
97	C.R. 42	0.16 Mi W OF CROWS BLUFF RD	E	739	38	17	29	3,992	3,708	3,681	3,691	4,204	1.30%	370	16:45	370	252	118	WB	16:45
98	C.R. 467	0.33 Mi W OF U.S. 27/U.S. 441	C	824	15	19	24	4,979	6,010	5,447	6,121	7,042	9.05%	617	15:30	617	293	324	WB	15:30



## 2015 Lake County Annual Traffic Counts

MAP STA #	ROAD NAME	LOCATION	Map Sheet	TMS ID	S E C	T W P	R N G	ANNUAL ADJUSTED DAILY TRAFFIC (AADT)					5-YEAR ANNUAL AVERAGE GROWTH RATE PERCENT	ADJUSTED PEAK HR VOLUME 2015	BEGIN PEAK HOUR 2015	ADJUSTED P.M. PEAK HOUR VOLUME (3-7 pm reported as 15:00-19:00) 2015				
								2011	2012	2013	2014	2015				Total	NB/EB	SB/WB	Pk Dir	Time
99	MAIN ST (LEESBURG)	0.08 Mi E OF U.S. 27/14th ST	C	841	26	19	24	12,151	11,185	10,588	10,612	7,077	-12.64%	604	11:45	556	261	295	WB	16:15
100	MAIN ST (LEESBURG)	0.10 Mi W OF U.S. 27/14th ST	C	470	27	19	24	10,622	9,932	9,786	9,508	8,150	-6.41%	742	16:30	742	328	414	EB	16:30
101	RADIO RD	0.12 Mi N OF U.S. 441/S.R. 500	C	501	23	19	25	7,818	7,711	8,154	6,829	6,945	-2.92%	618	17:30	618	349	269	NB	17:30
102	C.R. 561	0.08 Mi S OF C.R. 565B/LOG HOUSE	A	128	11	23	25	2,586	2,250	2,583	2,557	4,585	15.39%	845	7:45	374	167	207	SB	15:15
103	S.R. 33	0.18 Mi S OF C.R. 561	A	4	8	24	25	5,138	5,644	4,630	4,803	7,037	8.18%	468	8:45	456	261	196	NB	16:45
104	C.R. 19A	95 Ft E OF KURT ST	C-1	659	23	19	26	3,980	3,569	3,720	2,527	3,997	0.11%	381	16:30	381	180	201	EB	16:30
105	C.R. 19A	0.12 Mi S OF U.S. 441	C-1	287	23	19	26	14,383	13,193	13,405	13,833	14,597	0.37%	1,325	16:30	1,325	698	627	SB	16:30
106	C.R. 42	0.58 Mi E OF C.R. 450	D	412	33	17	27	3,489	3,714	3,704	3,549	3,988	3.40%	354	16:45	354	180	174	EB	16:45
107	C.R. 452 (EUSTIS)	0.15 Mi W OF S.R. 19	C-1	316	2	19	26	12,385	9,974	12,565	11,112	11,929	-0.93%	1,019	16:45	1,019	599	420	EB	16:45
108	U.S. 27/U.S. 441	0.10 Mi S OF SUMTER CO LINE	C	298	6	18	24	32,752	30,560	29,480	33,086	37,265	3.28%	3,194	11:15	3,056	1,552	1,504	NB	15:00
109	GRAND HIGHWAY	0.14 Mi N OF S.R. 50	A	179	29	22	26	5,260	5,223	6,005	5,726	4,193	-5.51%	350	15:00	350	184	165	NB	15:00
110	S.R. 40	AT MARION CO LINE	E	458	39	15	28	4,730	5,266	4,918	4,088	4,257	-2.60%	352	10:30	334	189	144	EB	15:45
111	S.R. 19	AT MARION CO LINE	E	268	30	15	28	1,853	1,499	1,979	1,284	2,074	2.86%	199	13:30	170	77	93	NB	16:00
112	EAGLESNEST RD	0.045 Mi E OF U.S. 27/U.S. 441	C	313	28	18	24	3,115	2,912	2,656	2,447	3,106	-0.07%	285	17:00	285	185	100	EB	17:00
113	C.R. 452	0.20 Mi S OF SOUTH EM-EN-EL GROVE RD	C	324	14	18	25	5,867	5,767	6,426	5,571	5,468	-1.75%	504	16:45	504	268	236	NB	16:45
114	C.R. 19A	0.05 Mi W OF S.R. 19	C-1	352	35	18	26	2,714	2,786	2,851	2,561	2,725	0.10%	257	7:00	247	98	149	WB	15:30
115	C.R. 44A	0.08 Mi W OF S.R. 44	D	332	35	18	28	1,216	1,256	1,437	1,129	1,146	-1.47%	103	16:45	103	47	56	EB	16:45
116	C.R. 25A (FRUIT PK.)	0.063 Mi S OF U.S. 27/U.S. 441	C	652	4	19	24	6,615	7,586	8,072	7,358	8,109	5.22%	726	16:45	726	383	343	SB	16:45
117	C.R. 466A (PICCIOLA RD)	0.20 Mi N OF PICCIOLA CUTOFF	C	312	10	19	24	6,220	6,597	7,233	7,173	8,993	9.65%	746	16:45	746	419	327	NB	16:45
118	C.R. 25A (LEESBURG)	0.126 Mi W OF U.S. 27	C	379	34	19	24	343	332	341	239	323	-1.48%	43	14:30	33	14	19	EB	15:00
119	C.R. 44	0.07 Mi E OF C.R. 473	C	737	2	19	25	14,937	14,635	16,028	14,771	13,062	-3.30%	1,185	17:15	1,185	469	717	WB	17:15
120	C.R. 44 LEG A	0.10 Mi NW OF U.S. 441	C	328	16	19	25	1,303	1,544	1,404	1,320	1,323	0.38%	154	12:45	136	99	37	SB	15:15
121	OLD MT DORA RD	0.11 Mi W OF EUDORA RD	C-1	517	23	19	26	4,763	4,327	4,201	4,161	5,150	1.97%	456	17:00	456	219	238	WB	17:00
122	MORNINGSIDE DR (MT DORA)	0.14 Mi N OF OLD 441	C-1	549	25	19	26	1,344	1,293	1,370	1,181	1,565	3.88%	150	17:15	150	89	61	NB	17:15
123	OLD 441	0.20 Mi E OF EUDORA RD	C-1	712	25	19	26	13,462	12,118	12,723	10,908	12,426	-1.98%	1,037	16:15	1,037	467	570	WB	16:15
124	OLD 441	0.19 Mi W OF C.R. 19A/EUDORA RD	C-1	65	26	19	26	8,986	8,551	8,453	7,311	8,213	-2.22%	759	16:30	759	406	354	WB	16:30
125	OLD 441/ALFRED ST	0.12 Mi E OF C.R. 19A/DORA AV	C-1	713	28	19	26	9,653	9,731	9,631	7,784	7,323	-6.67%	692	16:30	692	294	398	EB	16:30
126	ESTES RD	0.035 Mi N OF S.R. 44	C-1	583	8	19	27	2,707	2,927	2,970	3,162	3,497	6.61%	374	16:15	374	204	169	NB	16:15
127	C.R. 439	0.08 Mi N OF S.R. 44	D	346	10	19	27	3,223	3,212	3,173	3,248	3,781	4.07%	367	16:00	367	212	155	NB	16:00
128	C.R. 445A	0.11 Mi W OF ASTOR PARK CUTOFF RD	E	272	37	15	27	1,520	1,447	1,965	1,599	1,847	4.99%	168	16:45	168	82	86	WB	16:45
129	WOLF BRANCH RD	0.12 Mi E OF U.S. 441	D	710	29	19	27	9,349	9,110	8,845	9,697	9,507	0.42%	947	7:45	862	483	379	EB	16:30
130	ROUND LAKE RD	0.17 Mi S OF S.R. 46	D	508	35	19	27	3,461	3,513	3,871	4,338	4,880	8.97%	484	16:45	484	295	189	SB	16:45
131	S.R. 46	0.17 Mi E OF C.R. 46A	D	245	25	19	28	17,132	16,372	18,278	17,308	20,770	4.93%	1,904	16:45	1,904	795	1,109	WB	16:45
132	C.R. 33	0.34 Mi W OF U.S. 27	B	226	11	20	24	8,552	7,651	8,243	7,719	8,443	-0.32%	662	14:45	658	342	316	WB	15:15
133	C.R. 33	0.28 Mi S OF C.R. 470/C.R. 48	B	229	15	20	24	7,873	7,801	7,155	7,130	5,056	-10.48%	404	14:00	396	210	186	SB	15:30
134	C.R. 448	AT ORANGE CO LINE	B	71	13	20	26	4,822	4,902	5,076	5,524	8,141	13.99%	755	7:15	726	265	461	EB	16:15
135	C.R. 478	0.08 Mi E OF S.R. 19	B	597	7	22	25	828	996	991	936	1,085	7.00%	125	16:00	125	36	88	WB	16:00
136	C.R. 565A	0.2 Mi N OF S.R. 50	B	599	20	22	25	5,867	5,187	7,246	7,386	9,936	14.08%	913	16:00	913	426	488	SB	16:00
137	C.R. 565A	0.27 Mi S OF S.R. 50	A	594	20	22	25	1,882	1,891	1,982	1,965	3,541	17.12%	341	16:45	341	156	185	NB	16:45
138	C.R. 565B	0.10 Mi E OF C.R. 565A	A	593	3	23	25	1,921	2,015	1,252	2,055	2,194	3.38%	212	8:00	191	89	102	EB	16:15
139	C.R. 561	0.11 Mi E OF S.R. 33	A	131	8	24	25	1,372	1,171	1,285	1,231	1,483	1.96%	151	16:30	151	99	52	EB	16:30
140	S.R. 33	AT POLK CO LINE	A	1	28	24	25	3,738	4,283	3,787	3,384	3,400	-2.34%	247	8:45	242	109	133	NB	16:30
141	U.S. 27/S.R. 25	0.56 Mi N OF POLK CO LINE	A	25	35	24	26	40,721	36,605	37,367	35,361	55,443	8.02%	3,963	16:45	3,963	2,634	1,330	NB	16:45
142	U.S. 27/S.R. 25	0.53 Mi E OF C.R. 565	B	217	20	21	25	19,606	17,428	20,279	17,028	25,160	6.43%	1,992	16:30	1,992	1,012	980	NB	16:30
143	JALARMY RD	0.29 Mi N OF C.R. 561	B	486	12	22	25	2,831	2,241	2,996	3,098	3,784	7.53%	366	17:15	366	142	224	EB	17:15
144	LOG HOUSE RD	0.05 Mi E OF C.R. 561	A	133	11	23	25	2,814	2,743	2,957	3,195	4,798	14.27%	518	7:30	434	167	267	WB	17:15
145	LAKE LOUISA RD	0.20 Mi S OF LAKESHORE DR	A	171	6	23	26	3,352	3,377	3,244	3,124	6,428	17.68%	572	7:30	527	164	362	SB	16:45
146	HARTWOOD MARSH RD	0.15 Mi E OF U.S. 27/S.R. 25	A	362	9	23	26	12,779	11,467	11,221	11,908	10,704	-4.33%	1,046	7:45	1,037	354	683	WB	17:00
147	ROYAL TRAILS RD	0.11 Mi N OF S.R. 44	D	510	18	18	29	1,533	1,344	1,459	1,533	1,518	-0.25%	159	17:00	159	33	125	SB	17:00



## 2015 Lake County Annual Traffic Counts

MAP STA #	ROAD NAME	LOCATION	Map Sheet	TMS ID	S E C	T W P	R N G	ANNUAL ADJUSTED DAILY TRAFFIC (AADT)					5-YEAR ANNUAL AVERAGE GROWTH RATE PERCENT	ADJUSTED PEAK HR VOLUME 2015	BEGIN PEAK HOUR 2015	ADJUSTED P.M. PEAK HOUR VOLUME (3-7 pm reported as 15:00-19:00) 2015				
								2011	2012	2013	2014	2015				Total	NB/EB	SB/WB	Pk Dir	Time
								148	WOLF BRANCH RD	0.075 Mi W OF C.R. 437	D	49				19	19	28	4,129	4,072
149	LANE PARK CUTOFF	0.045 Mi E OF S.R. 19	B	558	6	20	26	1,806	1,484	1,612	1,597	1,795	-0.15%	268	8:15	265	176	89	SB	15:15
150	HARTWOOD MARSH RD	1.09 Mi W OF ORANGE CO LINE	A	918	2	23	26	10,158	9,066	9,402	9,589	10,759	1.45%	1,014	17:00	1,014	772	242	WB	17:00
151	LK LOUISA RD	0.17 Mi W OF U.S. 27	A	174	16	23	26	4,113	4,026	3,877	3,894	4,318	1.22%	385	7:15	362	128	234	NB	17:30
152	MAIN ST	0.05 Mi E OF S.R. 44 (TO U.S. 441)	C	478	25	19	24	4,248	3,998	3,943	3,982	4,275	0.16%	448	17:00	448	307	141	EB	17:00
153	C.R. 48	0.12 Mi W OF U.S. 27	B	218	14	20	24	7,293	7,165	7,246	6,733	8,459	3.78%	706	11:30	692	338	354	WB	16:15
154	OLD 441 (ALFRED ST)	0.08 Mi W OF S.R. 19			29	19	26													
155	C.R. 474	0.04 Mi W OF U.S. 27/S.R. 25	A	703	27	24	26	4,183	2,359	2,331	1,939	1,849	-18.47%	141	7:15	140	54	86	WB	16:15
156	DAVID WALKER DR	0.05 Mi N OF U.S. 441/S.R. 500	C-1	424	22	19	26	5,596	5,284	4,956	4,363	5,239	-1.64%	479	11:15	448	221	226	NB	16:30
157	DAVID WALKER DR	0.05 Mi W OF KURT ST (EUSTIS)	C-1	721	15	19	26	5,181	5,023	4,218	4,562	4,724	-2.28%	444	15:45	444	173	271	EB	15:45
158	C.R. 50	0.08 Mi W OF C.R. 455	B	156	23	22	26	7,059	5,656	5,515	4,308	6,698	-1.30%	789	7:00	592	287	305	EB	15:00
159	C.R. 25 (TEAGUE TL)	0.21 Mi S OF GRIFFIN AV	C	367	8	18	24	7,468	7,094	7,765	7,633	8,884	4.44%	751	15:15	751	409	342	NB	15:15
160	ROLLING ACRES RD	0.10 Mi S OF U.S. 27/U.S. 441	C	843	8	18	24	15,541	15,752	16,031	19,180	19,406	5.71%	1,860	15:15	1,860	987	872	SB	15:15
161	C.R. 44C (GRIFFIN RD)	0.061 Mi E OF C.R. 468	C	634	16	19	24	4,911	5,047	5,210	6,041	5,744	4.00%	490	14:45	489	246	243	EB	15:00
162	C.R. 455	0.12 Mi E OF S.R. 19	B	718	11	21	25	2,244	2,187	2,139	2,291	2,434	2.05%	232	7:15	195	102	93	EB	16:15
163	HOOKS ST	0.06 Mi W OF U.S. 27	A	435	30	22	26	5,959	6,096	6,330	6,847	6,570	2.47%	558	16:45	558	290	268	WB	16:45
164	WAYCROSS AV	0.126 Mi W OF S.R. 44	C-1	529	18	19	27	5,069	4,712	5,178	5,077	4,885	-0.92%	439	16:45	439	287	152	WB	16:45
165	HANCOCK RD	0.228 Mi S OF S.R. 50	A	911	27	22	26	15,786	15,407	15,769	17,586	19,328	5.19%	1,574	17:00	1,574	654	920	SB	17:00
166	ROLLING ACRES RD	0.17 Mi N OF C.R. 466	C	845	17	18	24	14,558	15,001	15,683	17,210	16,113	2.57%	1,508	14:15	1,459	640	819	SB	15:00
167	C.R. 466B	0.20 Mi S OF EMMAUS RD	C	308	2	19	24	4,074	3,282	4,726	4,375	4,852	4.46%	457	17:00	457	149	308	NB	17:00
168	DAVID WALKER DR	0.20 Mi S OF U.S. 441	C-1	423	22	19	26	6,992	6,642	7,045	6,860	7,505	1.79%	652	16:45	652	323	329	SB	16:45
169	CITRUS TOWER BV	0.14 Mi N OF S.R. 50	A	833	28	22	26	14,794	13,398	13,811	17,147	15,715	1.52%	1,214	16:45	1,214	569	644	SB	16:45
170	JOHNS LAKE RD	0.34 Mi E OF U.S. 27	A	487	32	22	26	6,194	5,816	7,104	6,936	10,411	13.86%	834	13:45	822	417	405	NB	17:15
171	C.R. 466A	0.10 Mi W OF U.S. 27/U.S. 441	C	315	4	19	24	5,528	4,889	6,723	6,464	6,400	3.73%	552	13:30	517	257	260	WB	15:00
172	C.R. 44A (GRIFFIN RD)	0.165 Mi W OF U.S. 27 (14th ST)	C	407	22	19	24	8,090	7,559	8,288	7,932	9,933	5.26%	905	16:45	905	448	457	EB	16:45
173	C.R. 473	0.083 Mi S OF C.R. 44	C	337	2	19	25	5,913	6,380	6,137	5,746	5,655	-1.11%	554	16:15	554	231	323	NB	16:15
174	RADIO RD	0.084 Mi S OF C.R. 44	C	500	3	19	25	3,485	3,298	3,211	3,118	2,220	-10.66%	187	16:00	187	90	97	NB	16:00
175	SLEEPY HOLLOW RD	0.064 Mi S OF U.S. 441	C	0	20	19	25	3,030	2,769	3,034	3,039	3,428	3.13%	318	17:00	318	182	136	NB	17:00
176	C.R. 561	0.08 Mi S OF S.R. 50	A	720	24	22	25	6,434	5,797	6,117	5,515	5,871	-2.26%	573	17:00	573	264	309	SB	17:00
177	LAKESHORE DR (CLERMONT)	0.122 Mi N OF LOG HOUSE RD/ OSWALT RD	A	92	12	23	25	9,159	8,432	8,837	8,756	9,321	0.44%	804	7:30	761	263	498	SB	17:15
178	CITRUS TOWER BV	0.113 Mi E OF U.S. 27	B	135	19	22	26	10,644	10,237	10,843	11,752	12,303	3.69%	953	15:30	953	398	555	WB	15:30
179	N HANCOCK RD	0.102 Mi N OF S.R. 50	A	150	27	22	26	14,361	14,193	14,984	15,491	16,901	4.16%	1,313	17:00	1,313	690	623	NB	17:00
180	HANCOCK RD	0.113 Mi N OF HARTWOOD MARSH RD	A	153	10	23	26	8,224	7,557	7,843	8,359	8,513	0.87%	815	16:30	815	399	416	NB	16:30
181	C.R. 437	0.105 Mi S OF C.R. 44A	D	247	31	18	28	4,513	4,692	4,804	4,816	2,702	-12.04%	234	15:45	234	125	108	NB	15:45
182	C.R. 435	0.091 Mi S OF S.R. 46	D	649	29	19	28	6,687	6,724	6,142	6,263	7,463	2.78%	726	7:30	713	384	329	SB	17:15
183	C.R. 448	0.155 Mi W OF C.R. 561	B	67	7	20	26	2,755	2,013	3,145	3,009	3,274	4.41%	330	7:30	284	132	152	WB	16:00
184	HUFFSTETLER DR	0.065 Mi E OF DAVID WALKER DR	C-1	483	22	19	26	679	815	715	490	885	6.84%	109	11:30	87	55	32	EB	15:15
185	HOOKS ST	0.7 Mi W OF HANCOCK RD	A	919	28	22	26	6,867	6,624	6,734	7,191	5,511	-5.35%	478	14:30	464	196	268	WB	17:00
186	LAKE ELLA RD	0.169 Mi W OF U.S. 27/U.S. 441	C	497	28	18	24	2,018	2,038	1,684	1,650	1,998	-0.25%	186	16:45	186	93	93	EB	16:45
187	LAKE ELLA RD	0.20 Mi W OF MICRO RACETRACK RD	C	496	31	18	24	1,036	1,140	1,130	1,161	1,132	2.24%	115	15:00	115	54	61	EB	15:00
188	MICRO RACETRACK RD	0.098 Mi N OF C.R. 466A	C	498	6	19	24	3,209	3,787	5,309	6,174	6,586	19.69%	611	15:00	611	281	330	SB	15:00
189	C.R. 25A	0.103 Mi N OF C.R. 25A/URICK ST	C	655	9	19	24	4,560	5,850	5,726	5,737	9,242	19.32%	959	15:00	959	327	632	NB	15:00
190	THOMAS AV	0.081 Mi N OF C.R. 44A/C.R. 44C	C	808	15	19	24	7,079	9,295	7,787	7,353	9,241	6.89%	828	15:45	828	378	450	NB	15:45
191	C.R. 455	0.14 Mi E OF C.R. 561	B	83	17	21	26	1,374	1,220	1,395	1,391	5,744	42.99%	490	14:45	489	246	243	EB	15:00
192	VISTA DEL LAGO BV	0.13 Mi W OF U.S. 27	A	167	9	23	26	1,305	1,428	1,169	1,334	1,510	3.72%	130	8:00	118	52	66	WB	15:30
193	WILSON LAKE PARKWAY	0.02 Mi S OF U.S. 27	B	773	26	21	25	682	350	951	1,330	1,950	30.04%	163	11:15	156	91	65	NB	15:00
194	ORANGE AV	0.161 Mi E OF S.R. 19 (EUSTIS)	C-1	536	11	19	26	11,913	11,043	10,248	10,384	11,784	-0.27%	1,102	16:15	1,102	560	543	EB	16:15
195	CITRUS GROVE ROAD	0.14 Mi E OF U.S. 27	B	546	6	22	26	548	750	858	904	1,009	16.50%	117	6:30	113	66	48	EB	16:30
196	BLACKSTILL LAKE RD	0.16 Mi N OF C.R. 50	B	672	16	22	26	3,000	2,887	3,163	3,106	3,362	2.89%	342	7:00	295	160	135	SB	16:15



## 2015 Lake County Annual Traffic Counts

MAP STA #	ROAD NAME	LOCATION	Map Sheet	TMS ID	S E C	T W P	R N G	ANNUAL ADJUSTED DAILY TRAFFIC (AADT)					5-YEAR ANNUAL AVERAGE GROWTH RATE PERCENT	ADJUSTED PEAK HR VOLUME 2015	BEGIN PEAK HOUR 2015	ADJUSTED P.M. PEAK HOUR VOLUME (3-7 pm reported as 15:00-19:00) 2015				
								2011	2012	2013	2014	2015				Total	NB/EB	SB/WB	Pk Dir	Time
								197	CITRUS TOWER BV	0.10 Mi N OF JOHNS LAKE RD	A	884				32	22	26	14,182	13,353
198	ORANGE AV	720 Ft E OF C.R. 44 (BYPASS)	C-1	466	7	19	27	11,805	11,527	11,812	11,555	13,661	3.72%	1,156	16:15	1,156	633	523	WB	16:15
199	LAKE MACK DR	0.04 Mi S OF C.R. 42	E	564	17	17	29	1,591	1,646	1,435	1,399	1,571	-0.32%	135	17:30	135	87	48	SB	17:30
200	GRIFFIN AV	0.085 Mi W OF C.R. 25	C	299	8	18	24	8,686	8,691	8,588	8,692	9,313	1.76%	810	16:15	810	534	276	EB	16:15
201	ROLLING ACRES RD	0.053 Mi N OF LAKE ELLA RD	C	503	30	18	24	2,704	3,342	4,776	5,085	5,525	19.56%	538	15:00	538	227	311	SB	15:00
202	LAKE DR	0.08 Mi S OF S.R. 44 (PINE LAKES)	D	568	8	18	29	710	735	721	818	1,125	12.20%	110	16:45	110	65	46	SB	16:45
203	ROUND LAKE RD	0.05 Mi S OF WOLF BRANCH RD	D	505	26	19	27	2,269	2,306	2,355	2,546	2,719	4.63%	467	7:30	263	116	147	SB	16:30
204	C.R. 470	0.536 Mi E OF TURNPIKE OVERPASS	B	223	17	20	24	5,404	5,760	4,988	4,262	6,525	4.83%	554	7:00	521	278	242	EB	15:45
205	SHIRLEY SHORES RD	0.15 Mi N OF C.R. 448	B	514	15	20	26	2,214	2,141	1,929	2,140	3,101	8.79%	311	15:45	311	190	121	NB	15:45
206	C.R. 565 (VILLA CITY RD)	0.134 Mi N OF S.R. 50	B	612	24	22	24	1,956	2,131	2,364	2,838	3,744	17.62%	372	17:00	372	169	202	SB	17:00
207	C.R. 561	0.10 Mi N OF C.R. 565A	B	605	14	22	25	4,342	3,958	3,914	4,173	5,073	3.97%	455	16:45	455	181	275	SB	16:45
208	TURKEY FARM RD	0.040 Mi N OF C.R. 50	B	169	17	22	26	3,139	4,506	5,172	6,116	5,258	13.76%	731	6:30	347	173	174	EB	17:45
209	N HANCOCK RD	0.106 Mi S OF C.R. 50	B	148	16	22	26	10,587	10,745	11,404	14,302	14,775	8.69%	1,058	7:00	1,054	557	497	NB	16:45
210	OSWALT RD	0.126 Mi E OF LAKESHORE DR (CLERMONT)	A	170	12	23	25	3,921	3,676	3,712	3,596	4,592	4.03%	401	17:00	401	248	153	EB	17:00
211	SHAY BV	0.158 Mi N OF GRIFFIN AV	C	511	7	18	24	2,591	2,375	3,279	3,324	3,483	7.68%	323	15:45	323	165	158	SB	15:45
212	W McCLENDON ST	0.024 Mi W OF U.S. 27/U.S. 441	C	550	20	18	24	892	594	448	395	675	-6.74%	75	6:45	69	26	44	WB	15:30
213	W LADY LAKE BV	0.029 Mi W OF U.S. 27/U.S. 441	C	493	20	18	24	1,536	1,281	2,039	1,132	1,627	1.45%	150	12:45	129	50	79	WB	15:00
214	LADY LAKE BV	0.045 Mi E OF U.S. 27/U.S. 441	C	494	21	18	24	693	685	619	633	665	-1.02%	66	17:00	66	41	25	EB	17:00
215	GRAYS AIRPORT RD	0.10 Mi N OF EAGLESNEST RD	C	401	27	18	24	1,460	1,483	1,672	1,760	1,771	4.94%	201	17:15	201	123	78	NB	17:15
216	SOUTH GRAYS AIRPORT RD	0.048 Mi E OF U.S. 27/U.S. 441	C	403	34	18	24	856	1,308	673	2,520	3,217	39.23%	304	17:00	304	188	116	EB	17:00
217	ARLINGTON AV	0.097 Mi S OF W LADY LAKE BV	C	681	20	18	24	1,348	1,149	1,264	1,432	1,540	3.38%	142	17:15	142	58	84	SB	17:15
218	SOUTH FISH CAMP RD	0.097 Mi N OF C.R. 44	C-1	577	32	18	26	1,142	1,396	1,427	1,327	1,345	4.17%	143	17:00	143	88	54	NB	17:00
219	ROSE ST	0.3 Mi E OF OAK ST	C	72	13	18	26	1,016	1,169	661	1,195	1,351	7.39%	129	6:45	117	75	42	WB	17:15
220	C.R. 44A (NORTH)	0.2 Mi N OF C.R. 450A	D	75	20	18	27	1,543	1,433	1,452	1,547	1,652	1.72%	174	6:45	160	88	71	NB	16:15
221	C.R. 44A (EAST)	0.6 Mi E OF C.R. 439	D	335	34	18	27	3,814	UC	3,740	3,352	3,751	-0.41%	345	16:30	345	183	162	WB	16:30
222	THOMAS AV	0.102 Mi S OF C.R. 44A/C.R. 44C	C	527	22	19	24	6,519	8,107	7,011	7,479	9,704	10.46%	922	16:30	922	475	447	SB	16:30
223	LONE OAK DR	0.15 Mi S OF W MAIN ST	C	685	27	19	24	3,386	3,596	2,834	2,657	3,254	-0.99%	360	16:15	360	147	213	EB	16:15
224	GRIFFIN RD	0.123 Mi E OF U.S. 27/U.S. 441	C	404	14	19	24	2,500	2,714	2,279	2,045	3,793	10.98%	538	7:45	388	174	214	WB	15:00
225	LEE ST	0.155 Mi N OF U.S. 441	C	555	23	19	24	2,842	4,432	2,071	2,235	2,948	0.92%	290	16:30	290	106	183	SB	16:30
226	LEE ST	0.115 Mi S OF U.S. 441	C	556	23	19	24	2,970	3,185	2,992	2,743	3,495	4.15%	402	7:45	372	130	241	NB	15:00
227	CANAL ST	0.026 Mi N OF MAIN ST	C	663	26	19	24	4,044	3,942	4,101	3,913	5,849	9.66%	539	16:15	539	351	188	NB	16:15
228	CANAL ST	0.035 Mi S OF MAIN ST	C	663	26	19	24	3,348	3,357	4,865	3,183	5,107	11.14%	469	8:00	428	194	234	SB	16:15
229	LAKE ST	0.064 Mi N OF MAIN ST	C	723	25	19	24	2,561	2,987	2,816	2,621	2,698	1.31%	207	16:30	207	102	105	SB	16:30
230	LAKE ST	0.098 Mi S OF MAIN ST	C	566	25	19	24	4,184	4,305	3,555	3,114	3,490	-4.43%	276	15:30	276	155	121	NB	15:30
231	MAIN ST	0.051 Mi E OF CANAL ST	C	474	25	19	24	5,460	5,216	5,026	4,815	4,278	-5.92%	387	17:00	387	281	105	EB	17:00
232	MAIN ST	0.09 Mi E OF LAKE ST	C	476	25	19	24	5,062	4,877	3,533	4,569	3,412	-9.39%	414	16:45	414	139	276	EB	16:45
233	SUNNYSIDE DR	0.106 Mi S OF SUNNYSIDE DR (EAST)	C	525	30	19	25	1,517	1,459	1,437	1,957	1,624	1.72%	157	16:30	157	56	101	EB	16:30
234	DEAD RIVER RD	0.2 Mi W OF S.R. 19	C-1	589	31	19	26	6,377	6,273	5,854	6,284	6,821	1.70%	560	16:30	560	249	311	WB	16:30
235	WOODLEA RD	0.1 Mi W OF S.R. 19	C	533	31	19	26	2,971	2,525	2,792	989	3,782	6.22%	400	16:15	400	226	174	WB	16:15
236	WELLS AV	0.12 Mi E OF S.R. 19	C	530	32	19	26	1,557	1,475	1,722	889	939	-11.88%	102	16:30	102	29	72	EB	16:30
237	MAIN ST	0.04 Mi W OF SINCLAIR AV	C-1	552	29	19	26	8,035	7,887	6,357	11,820	7,280	-2.44%	705	16:30	705	291	414	WB	16:30
238	MAIN ST	0.3 Mi E OF DISSTON AV	C-1	656	28	19	26	2,156	2,068	1,800	2,103	3,058	9.13%	320	16:45	320	185	135	EB	16:45
239	C.R. 452 (LAKESHORE DR)	0.06 Mi W OF COLLEY DR. (EAST)	C-1	626	34	19	26	1,545	1,407	1,371	1,525	1,580	0.55%	166	16:45	166	112	54	EB	16:45
240	ST CLAIR ABRAMS AV	0.06 Mi N OF ALFRED ST	C-1	632	29	19	26	3,527	3,603	3,395	3,995	3,066	-3.44%	481	15:00	481	244	237	NB	15:00
241	DORA AV	.01 Mi S OF ALFRED ST	C-1	713	28	19	26	1,039	1,095	829	1,268	1,747	13.87%	175	16:15	175	88	86	SB	16:15
242	LAKE EUSTIS DR	0.1 Mi N OF U.S. 441	C-1	375	21	19	26	5,739	5,071	5,433	5,445	5,520	-0.97%	509	16:45	509	222	287	SB	16:45
243	S. MT HOMER RD	0.05 Mi S OF U.S. 441	C-1	442	21	19	26	212	233	291	291	278	6.96%	31	14:45	29	22	7	SB	15:15
244	MT HOMER RD	0.14 Mi N OF U.S. 441	C-1	440	22	19	26	1,423	1,469	1,303	1,278	1,523	1.70%	160	16:45	160	105	55	NB	16:45
245	MT HOMER RD	0.1 Mi W OF KURT ST	C-1	439	15	19	26	3,677	3,433	3,118	3,052	4,040	2.38%	367	14:15	361	158	203	WB	15:00



## 2015 Lake County Annual Traffic Counts

MAP STA #	ROAD NAME	LOCATION	Map Sheet	TMS ID	S E C	T W P	R N G	ANNUAL ADJUSTED DAILY TRAFFIC (AADT)					5-YEAR ANNUAL AVERAGE GROWTH RATE PERCENT	ADJUSTED PEAK HR VOLUME 2015	BEGIN PEAK HOUR 2015	ADJUSTED P.M. PEAK HOUR VOLUME (3-7 pm reported as 15:00-19:00) 2015				
								2011	2012	2013	2014	2015				Total	NB/EB	SB/WB	Pk Dir	Time
246	FAIRVIEW AV	0.1 Mi S OF ALFRED ST	C-1	761	27	19	26	699	717	675	553	710	0.39%	63	17:45	63	33	29	SB	17:45
247	KURT ST	0.06 Mi S OF HUFFSTETLER DR	C-1	899	23	19	26	4,938	4,567	4,444	4,386	5,075	0.69%	473	14:15	445	225	220	NB	15:15
248	KURT ST	0.1 Mi S OF W GOLFLINKS AV	C-1	913	14	19	26	4,063	4,005	3,476	3,395	3,995	-0.42%	373	14:30	353	133	220	NB	16:45
249	KURT ST	0.1 Mi N OF W GOLFLINKS AV	C-1	784	14	19	26	8,182	7,808	7,172	7,130	8,034	-0.46%	727	16:45	727	460	267	NB	16:45
250	LAKEVIEW AV	0.2 Mi W OF S.R. 19	C-1	779	14	19	26	7,598	7,391	6,748	6,443	7,076	-1.76%	646	15:30	646	250	396	WB	15:30
251	W GOLFLINKS AV	0.1 Mi E OF KURT ST	C-1	572	14	19	26	996	851	879	875	1,117	2.90%	116	7:30	107	74	33	WB	15:15
252	ARDICE AV	0.05 Mi E OF KURT ST	C-1	682	23	19	26	5,090	4,798	4,886	4,689	5,687	2.81%	558	11:30	489	229	259	WB	15:15
253	BAY RD	0.1 Mi S OF OLD 441	C-1	675	26	19	26	1,718	1,682	1,723	1,538	1,908	2.66%	186	13:00	158	98	60	SB	16:45
254	BAY RD	0.1 Mi N OF OLD 441	C-1	674	26	19	26	2,926	2,905	2,495	2,127	1,628	-13.63%	653	7:30	0	0	0	SB	15:00
255	GROVE ST	0.02 Mi N OF OLD MT DORA RD	C-1	426	14	19	26	3,494	3,246	3,371	3,453	4,020	3.57%	397	16:30	397	172	225	NB	16:30
256	GROVE ST	0.1 Mi N OF GOLFLINKS AV	C-1	428	14	19	26	2,978	2,733	2,529	2,619	3,125	1.21%	309	16:00	309	207	102	NB	16:00
257	GROVE ST	0.1 Mi N OF LAKEVIEW AV	C-1	430	14	19	26	1,182	1,248	1,169	1,270	1,600	7.87%	162	16:30	162	34	127	NB	16:30
258	C.R. 19A	0.2 Mi S OF HOLLY DR	C-1	65	26	19	26	8,048	7,470	7,871	7,824	5,472	-9.19%	471	7:30	452	391	62	NB	16:45
259	LAKEVIEW AV	.12 Mi E OF S.R. 19	C-1	429	14	19	26	5,011	4,620	5,293	5,101	4,681	-1.69%	443	16:30	443	227	216	EB	16:30
260	EUDORA RD	0.2 Mi N OF U.S. 441	C-1	579	24	19	26	3,153	2,730	4,454	4,838	3,416	2.02%	307	14:45	302	160	143	NB	15:00
261	PRESCOTT ST	0.12 Mi N OF E ORANGE AV	C-1	541	11	19	26	464	445	564	434	521	2.93%	55	7:00	49	20	29	SB	16:30
262	BATES AV	0.07 Mi E OF C.R. 44	C-1	0	2	19	26	1,433	1,223	1,238	1,661	1,447	0.23%	334	8:30	209	73	136	WB	15:00
263	BATES AV	0.1 Mi E OF PRESCOTT ST	C-1	765	1	19	26	1,393	1,314	1,024	2,452	901	-10.32%	94	15:45	94	56	38	EB	15:45
264	HASELTON ST	0.17 Mi S OF E ORANGE AV	C-1	432	12	19	26	1,778	1,942	1,604	1,687	1,842	0.89%	181	7:00	180	87	92	NB	16:15
265	WASHINGTON AV	0.1 Mi E OF HASELTON ST	C-1	534	12	19	26	2,429	2,597	2,420	2,257	2,557	1.29%	259	14:30	247	99	148	EB	16:15
266	LAKEVIEW AV	.01 Mi W OF HASELTON ST	C-1	901	13	19	26	3,231	3,272	2,984	2,941	3,311	0.61%	337	16:15	337	141	197	EB	16:15
267	LAKESHORE DR	0.06 Mi N OF OLD 441	C-1	620	30	19	27	701	593	606	690	872	5.62%	85	14:00	70	34	36	SB	16:00
268	OLD 441	0.09 Mi E OF LAKESHORE DR	C-1	58	30	19	27	9,038	9,364	8,805	8,602	9,762	1.94%	866	16:45	866	457	409	EB	16:45
269	HIGHLAND ST	0.04 Mi N OF 5th AV	C-1	434	29	19	27	1,849	2,270	2,267	2,403	2,716	10.09%	320	6:45	291	175	116	NB	15:30
270	LIMIT AV	.01 Mi W OF U.S. 441	D	709	20	19	27	2,195	2,201	2,035	2,405	2,406	2.33%	245	7:30	221	113	108	WB	17:00
271	C.R. 448A	0.2 Mi S OF C.R. 48	B	757	25	20	26	171	204	243	339	163	-1.26%	30	15:15	30	14	16	SB	15:15
272	C.R. 448A	0.2 Mi N OF C.R. 48	B	819	24	20	26	4,149	3,795	3,933	4,512	6,802	13.15%	707	7:00	610	265	345	SB	16:45
273	TUSCANOOGA RD	.09 Mi N OF S.R. 50	B	104	15	22	24	2,191	2,208	2,182	2,203	2,507	3.43%	252	16:15	252	141	111	SB	16:15
274	MASCOTTE EMPIRE RD (S. SU	.32 Mi S OF S.R. 50	B	181	14	22	24	675	562	912	793	795	4.19%	91	7:30	77	40	37	SB	16:45
275	C.R. 50/SUNSET AV	0.03 Mi N OF S.R. 50	B	161	14	22	24	989	1,403	1,026	1,144	1,224	5.48%	124	17:00	124	48	76	SB	17:00
276	PALMETTO DR	0.043 Mi W OF C.R. 33	B	106	14	22	24	490	514	397	447	554	3.12%	59	16:45	59	35	24	WB	16:45
277	UNDERPASS RD	0.036 Mi E OF C.R. 33	B	107	14	22	24	717	729	831	729	938	6.95%	100	16:45	100	55	45	EB	16:45
278	EAST AV	0.1 Mi N OF S.R. 50	A	834	19	22	26	5,540	5,043	5,606	5,703	5,699	0.71%	579	7:45	462	213	249	SB	17:15
279	MAIN ST	0.1 Mi N OF WASHINGTON ST	B	771	18	22	26	1,907	1,831	1,981	1,845	2,093	2.35%	202	7:30	198	132	66	SB	17:45
280	CITRUS TOWER BV	0.1 Mi S OF S.R. 50	A	146	28	22	26	13,786	11,986	13,799	15,687	17,410	6.01%	1,682	17:00	1,682	588	1,094	SB	17:00
281	HOOKS ST	0.12 W. OF CITRUS TOWER BV	A	482	29	22	26	4,047	3,813	6,588	7,154	9,157	22.65%	783	16:45	783	413	370	EB	16:45
282	EXCALIBUR RD	0.08 Mi S OF HOOKS ST	A	892	28	22	26	4,084	3,673	3,561	4,312	3,414	-4.38%	546	6:30	278	111	167	NB	15:00
283	CITRUS TOWER BV	0.18 E. OF US 27	A	910	5	23	26	10,825	10,040	12,376	12,393	14,550	7.67%	1,176	7:00	1,140	516	624	WB	17:15
284	HAMMOCK RIDGE RD	0.21 W. OF US 27	A	897	5	23	26	9,880	9,982	13,124	12,516	14,427	9.93%	1,262	17:00	1,262	537	725	WB	17:00
285	LAKESHORE DR (CLERMONT)	0.14 E. OF HAMMOCK RIDGE ROAD	A	900	6	23	26	6,594	6,519	9,398	6,664	5,854	-2.93%	554	17:15	554	199	355	WB	17:15
286	FOSGATE RD	0.19 Mi W OF GRASSY LAKE RD	B	895	8	22	26	1,052	1,424	1,571	2,196	2,117	19.11%	412	6:30	130	65	66	EB	16:45
287	STEVES RD	0.44 Mi W. OF CITRUS TOWER BV	A	886	29	22	26	4,545	4,863	5,529	5,637	5,715	5.89%	591	12:15	453	277	177	WB	17:30
288	CR 44A	0.17 MI N. OF CR 44A	C-1	823	5	19	27	1,604	1,632	1,661	1,817	1,945	4.93%	190	16:15	190	157	33	NB	16:15
289	HOOKS ST	E. OF US 27	A	481	29	22	26	3,385	4,022	5,227	4,920	9,595	29.76%	791	13:00	779	357	422	WB	16:45
290	GRAND HIGHWAY	N. OF HOOKS ST	A	0	29	22	26	3,345	3,982	8,585	6,243	3,830	3.44%	331	13:00	308	176	132	NB	15:45
291	CR 48	AT SUMTER COUNTY LINE	B	225	7	21	24	*****	2,043	2,003	2,218	1,429	N/A	126	16:45	126	56	70	WB	16:45
292	CR 561A	WEST OF CR 455	B	132	27	21	26	*****	*****	*****	1,496	1,675	N/A	202	16:00	202	64	139	EB	16:00
293	CR 50	EAST OF HANCOCK RD	B	157	16	22	26	*****	*****	*****	9,591	6,847	N/A	697	16:45	697	284	412	WB	16:45
294	SIMON BROWN	EAST OF SR 33	B	0	7	22	24	*****	*****	*****	462	566	N/A	68	16:45	68	26	43	WB	16:45



## 2015 Lake County Annual Traffic Counts

MAP STA #	ROAD NAME	LOCATION	Map Sheet	TMS ID	S E C	T W P	R N G	ANNUAL ADJUSTED DAILY TRAFFIC (AADT)					5-YEAR ANNUAL AVERAGE GROWTH RATE PERCENT	ADJUSTED PEAK HR VOLUME 2015	BEGIN PEAK HOUR 2015	ADJUSTED P.M. PEAK HOUR VOLUME (3-7 pm reported as 15:00-19:00) 2015				
								2011	2012	2013	2014	2015				Total	NB/EB	SB/WB	Pk Dir	Time
298	E ASHPAWA RD	WEST OF US27	B	0	36	21	25	****	****	****	****	709	N/A	59	18:00	59	24	35	NB	18:00
299	HARTWOOD MARSH RD	.1Mi E HANCOCK	A	364	10	23	26	****	****	****	****	16,478	N/A	2,041	7:30	1,356	525	832	WB	17:00
300	JOHNS LAKE RD	EAST OF HANCOCK RD	A	0	34	22	26	****	****	****	****	413	N/A	34	7:15	31	12	19	EB	16:15
301	HARTLE RD	SOUTH OF SR50	A	0	26	22	26	****	****	****	****	3,660	N/A	297	17:15	297	137	160	SB	17:15
302	SULLIVAN RD	EAST OF US27	B	0	6	22	26	****	****	****	****	207	N/A	18	11:15	18	10	9	EB	16:00
303	E. DEWEY ROBBINS RD	WEST OF SR19	B	609	36	21	24	****	****	****	****	600	N/A	61	17:00	61	33	28	WB	17:00
304	E. DEWEY ROBBINS RD	WEST OF SR19	B	0	2	21	25	****	****	****	****	600	N/A	61	17:00	61	33	28	WB	17:00
305	DEWEY ROBBINS RD	EAST OF US27	B	0	36	20	24	****	****	****	****	380	N/A	41	17:15	41	24	17	EB	17:15
306	SR46	EAST OF NORTH CR437	D	241	30	19	28	****	****	****	****	16,087	N/A	1,460	17:00	1,460	725	735	WB	17:00
307	CR46A	SOUTH OF SR44	D	614	8	19	28	****	****	****	****	7,237	N/A	663	17:00	663	231	432	NB	17:00
308	W LADY LAKE RD	EAST OF ARLINGTON	C	492	20	18	24	****	****	****	****	1,705	N/A	140	16:45	140	50	89	WB	16:45
309	CHULA VISTA AV	BETWEEN RIO & SAN REMO	C	0	18	18	24	****	****	****	****	2,503	N/A	252	15:15	252	132	120	WB	15:15
310	E. LADY LAKE RD	EAST OF US27/US441	C	494	21	18	24	****	****	****	****	469	N/A	44	10:45	35	26	10	WB	16:45
311	SCRUB JAY LN	SOUTH OF FLORIDA TURNPIKE BRIDGE	B	0	32	21	26	****	****	****	****	482	N/A	72	6:30	39	24	15	NB	15:45

\*\*\*\* - Data not available for that year

N/A = not available due to lack of previous years data

U/C Denotes station under construction during data collection period.

5 -Year Annual Average Percentage Growth Rate is computed as follows:

$$\text{"5-Year Annual Average Percentage Growth Rate} = (1 + ((2014 \text{ AADT} - 2010 \text{ AADT}) / (2010 \text{ AADT}))^{(1/4)} - 1)$$

Stations Deleted from the program:

# 83  
# 85  
# 154