

2014 Lake County Annual Traffic Counts



LAKE COUNTY

F L O R I D A

Lake County Public Works
Engineering Division
437 Ardice Avenue
Eustis, Florida 32726

2014 Lake County Traffic Counts for County Roads



Lake County Public Works Building



Typical view of Lake County Annual Traffic Count Station setup

2014 Lake County Traffic Counts for County Roads

Introduction

Lake County Public Works Engineering Division is pleased to provide to all the Local Governments and Interested Others, the 2014 Annual Daily Traffic Counts for all of the Lake County maintained major roads. The 2014 Annual Daily Traffic Count Program is one of the responsibilities of the Lake County Public Works Engineering Division.

The Lake County Public Works Traffic Count Program is the enumeration of vehicular volumes taken at more than 290 count stations on roads within the County. Count reports produced by this program reflect daily and hourly volumes. Traffic counts are used by planners and engineers as a basic scale of comparison indicating the relative importance of various links in a road system. The traffic counts are also used to determine the Operating Level of Service on a given section of roadway.

The next series of pages are Traffic Count Station Location Maps and Traffic Tables. Every effort has been made to make the 2014 Annual Daily Traffic Counts Book as accurate as possible. Any errors or omissions should be brought to the attention of the Lake County Public Works staff.

The 2014 Annual Traffic Count Book is a public document. Copies will be made available for public inspection at Lake County Public Works Departments offices, 437 Ardice Avenue, Eustis, Florida. The 2014 Traffic Count Book will be provided to interested parties on request. Cost for reproduction may be charged, in accordance with Lake County policies.

Lake County Public Works wishes to acknowledge the Lake-Sumter Metropolitan Planning Organization for their contributions to the 2014 Lake County Traffic Count Program.

The 2014 Annual Lake County Traffic Counts booklet is available for download free on our website:

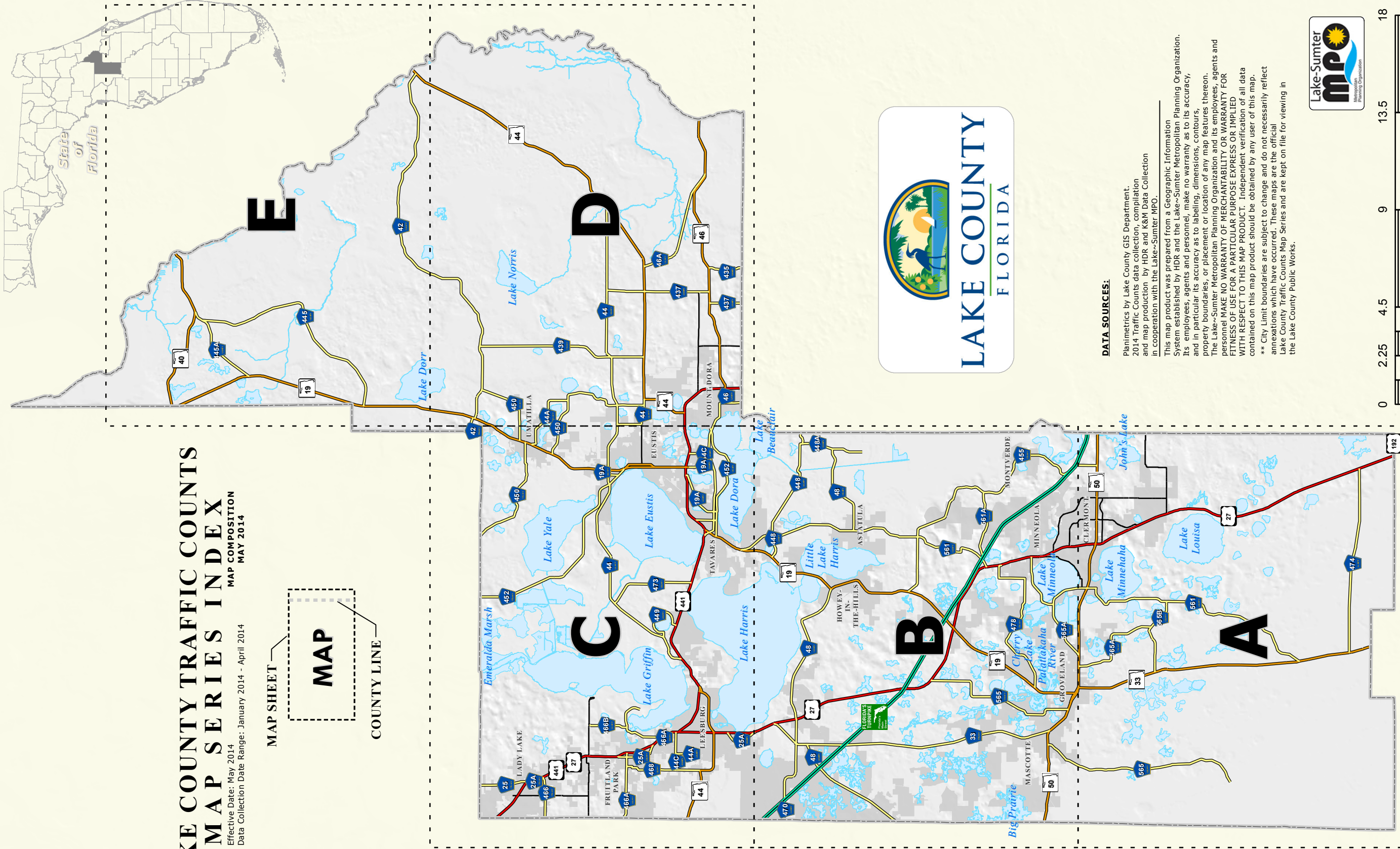
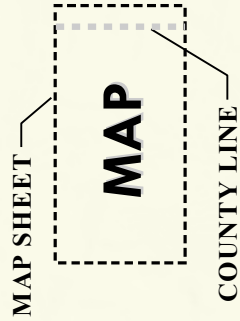
http://www.lakecountyfl.gov/departments/public_works/engineering/traffic_count.aspx



**LAKE COUNTY TRAFFIC COUNTS
MAP SERIES INDEX**

Effective Date: May 2014
Data Collection Date Range: January 2014 - April 2014

MAP COMPOSITION
MAY 2014



DATA SOURCES:

Planimetrics by Lake County GIS Department.
2014 Traffic Counts data collection, compilation
and map production by HDR and K&M Data Collection
in cooperation with the Lake-Sumter MPO.

This map product was prepared from a Geographic Information System established by HDR and the Lake-Sumter Metropolitan Planning Organization. Its employees, agents and personnel, make no warranty as to its accuracy, and in particular its accuracy as to labeling, dimensions, contours, property boundaries, or placement or location of any map features thereon. The Lake-Sumter Metropolitan Planning Organization and its employees, agents and personnel MAKE NO WARRANTY OF MERCHANTABILITY OR WARRANTY FOR FITNESS OF USE FOR A PARTICULAR PURPOSE EXPRESS OR IMPLIED WITH RESPECT TO THIS MAP PRODUCT. Independent verification of all data contained on this map product should be obtained by any user of this map.

** City Limit boundaries are subject to change and do not necessarily reflect annexations which have occurred. These maps are the official Lake County Traffic Counts Map Series and are kept on file for viewing in the Lake County Public Works.



2014 LAKE COUNTY ANNUAL TRAFFIC COUNTS MAP SERIES



LEGEND

- Station ID
- Traffic Count Station Locations
- County Road
- State Road
- US Highway
- Interstate
- Turnpike
- Active Railroad
- Water Body
- County Boundary

Incorporated Area

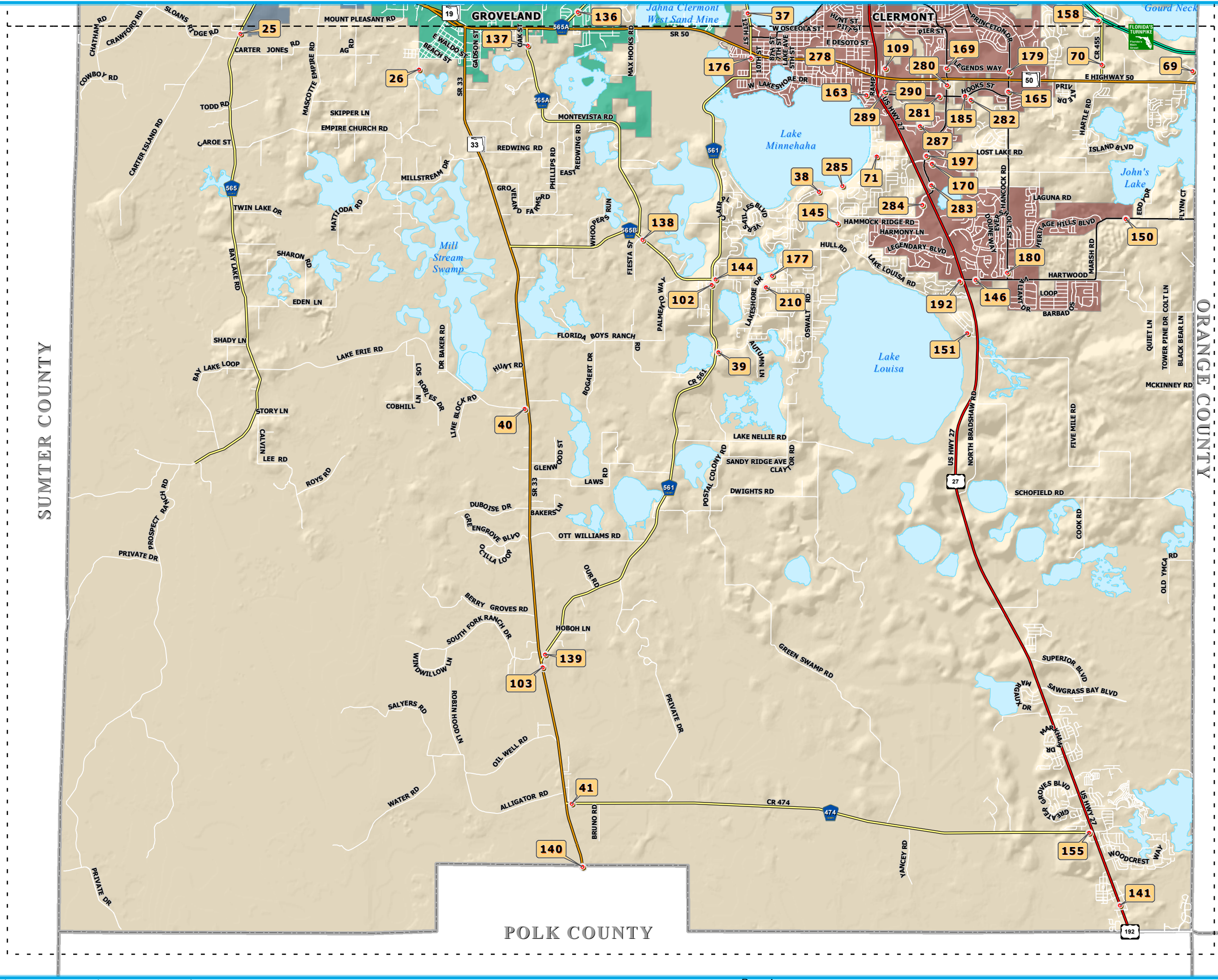
Astatula	Leesburg
Clermont	Mascotte
Eustis	Minneola
Fruitland Park	Montverde
Groveland	Mount Dora
Howey-In-The-Hills	Tavares
Lady Lake	Umatilla

DATA SOURCES:
 Planimetrics by Lake County GIS Department.
 2014 Traffic Counts data collection, compilation and map production by HDR and K&M Data Collection in cooperation with the Lake-Summer MPO.

This map product was prepared from a Geographic Information System established by HDR and the Lake-Summer Metropolitan Planning Organization. Its employees, agents and personnel, make no warranty as to its accuracy, and in particular its accuracy as to labeling, dimensions, contours, property boundaries, or placement or location of any map features thereon. The Lake-Summer Metropolitan Planning Organization and its employees, agents and personnel MAKE NO WARRANTY OF MERCHANTABILITY OR WARRANTY FOR FITNESS OF USE FOR A PARTICULAR PURPOSE EXPRESS OR IMPLIED WITH RESPECT TO THIS MAP PRODUCT. Independent verification of all data contained on this map product should be obtained by any user of this map.

MAP SERIES INDEX

MAP SHEET A



2014 LAKE COUNTY ANNUAL TRAFFIC COUNTS MAP SERIES



LAKE COUNTY FLORIDA

LEGEND

- Station ID
- Traffic Count Station Locations
- County Road
- State Road
- US Highway
- Interstate
- Turnpike
- Active Railroad
- Water Body
- County Boundary

MAP SHEET
COUNTY LINE

Incorporated Area

	Astatula		Leesburg
	Clermont		Mascotte
	Eustis		Minneola
	Fruitland Park		Montverde
	Groveland		Mount Dora
	Howey-In-The-Hills		Tavares
	Lady Lake		Umatilla

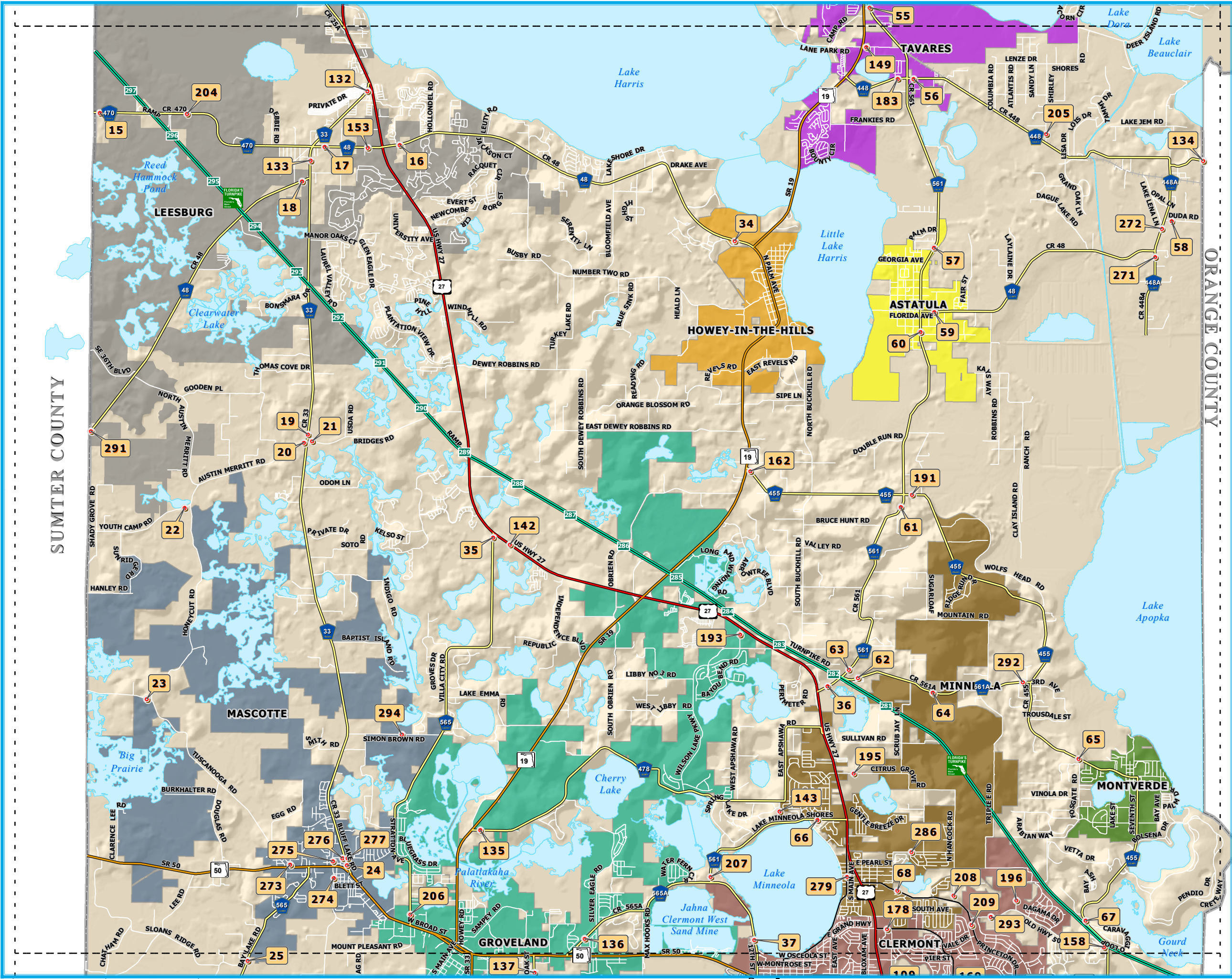
DATA SOURCES:
Planimetrics by Lake County GIS Department.
2014 Traffic Counts data collection, compilation and map production by HDR and K&M Data Collection in cooperation with the Lake-Sumter MPO.

This map product was prepared from a Geographic Information System established by HDR and the Lake-Sumter Metropolitan Planning Organization. Its employees, agents and personnel, make no warranty as to its accuracy, and in particular its accuracy as to labeling, dimensions, contours, property boundaries, or placement or location of any map features thereon. The Lake-Sumter Metropolitan Planning Organization and its employees, agents and personnel MAKE NO WARRANTY OF MERCHANTABILITY OR WARRANTY FOR FITNESS OF USE FOR A PARTICULAR PURPOSE EXPRESS OR IMPLIED WITH RESPECT TO THIS MAP PRODUCT. Independent verification of all data contained on this map product should be obtained by any user of this map.

MAP SERIES INDEX

MAP SHEET B

North arrow and Lake-Sumter MPO logo.



2014 LAKE COUNTY ANNUAL TRAFFIC COUNTS MAP SERIES



LAKE COUNTY FLORIDA

LEGEND

- Station ID
- Traffic Count Station Locations
- County Road
- State Road
- US Highway
- Interstate
- Turnpike
- Active Railroad
- Water Body
- County Boundary

Incorporated Area

	Astatula		Leesburg
	Clermont		Mascotte
	Eustis		Minneola
	Fruitland Park		Montverde
	Groveland		Mount Dora
	Howey-In-The-Hills		Tavares
	Lady Lake		Umatilla

DATA SOURCES:
 Planimetrics by Lake County GIS Department.
 2014 Traffic Counts data collection, compilation and map production by HDR and K&M Data Collection in cooperation with the Lake-Summer MPO.

This map product was prepared from a Geographic Information System established by HDR and the Lake-Summer Metropolitan Planning Organization. Its employees, agents and personnel, make no warranty as to its accuracy, and in particular its accuracy as to labeling, dimensions, contours, property boundaries, or placement or location of any map features thereon. The Lake-Summer Metropolitan Planning Organization and its employees, agents and personnel MAKE NO WARRANTY OF MERCHANTABILITY OR WARRANTY FOR FITNESS OF USE FOR A PARTICULAR PURPOSE EXPRESS OR IMPLIED WITH RESPECT TO THIS MAP PRODUCT. Independent verification of all data contained on this map product should be obtained by any user of this map.

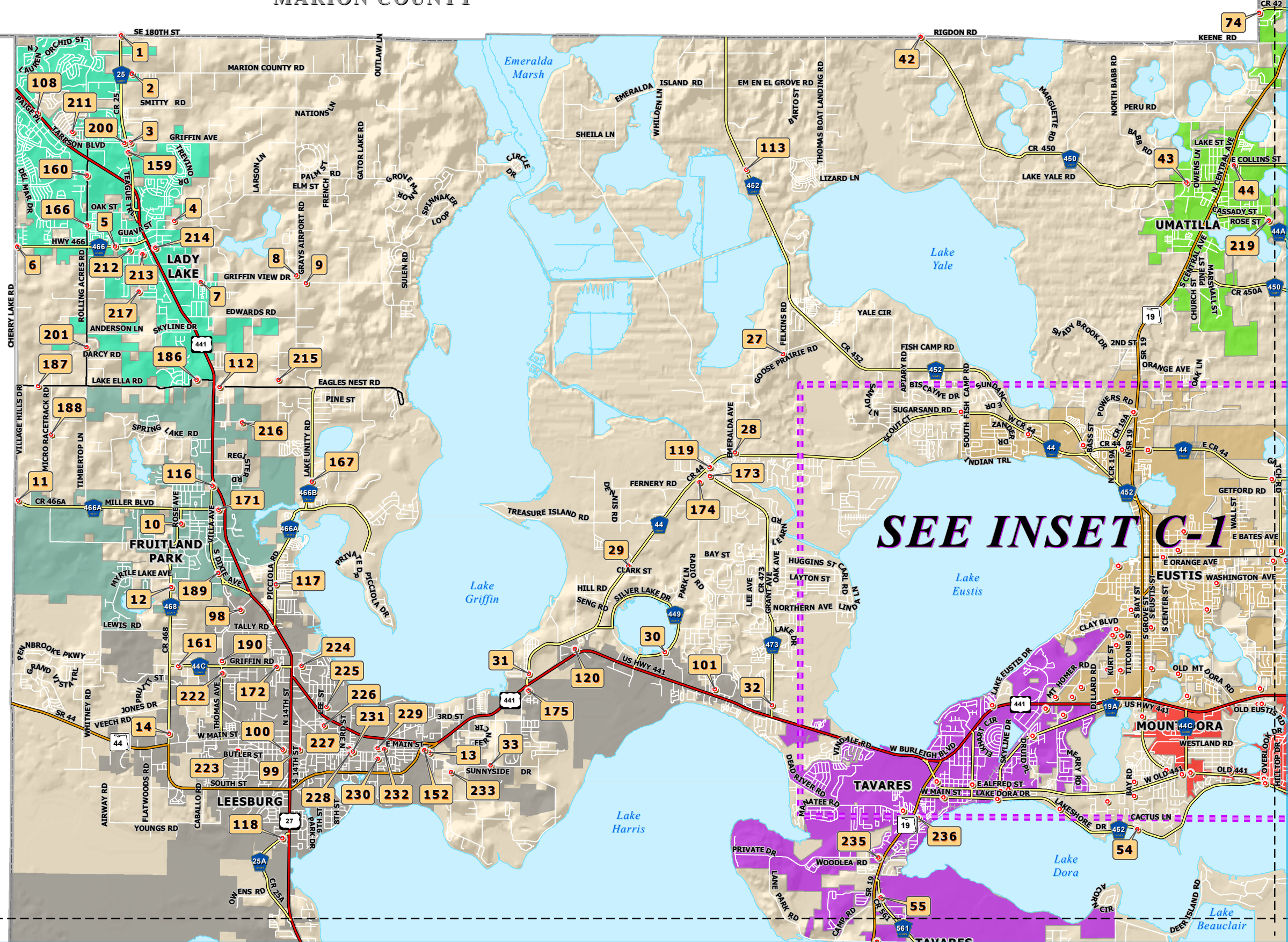
MAP SERIES INDEX

MAP SHEET C

Lake-Summer MPO Metropolitan Planning Organization

MARION COUNTY

SUMTER COUNTY



SEE INSET C-1

2014 LAKE COUNTY ANNUAL TRAFFIC COUNTS MAP SERIES



LAKE COUNTY FLORIDA

LEGEND

- Station ID
- Traffic Count Station Location
- County Road
- State Road
- US Highway
- Interstate
- Turnpike
- Active Railroad
- Water Body
- County Boundary

MAP

MAP SHEET COUNTY LINE

Incorporated Area

Astatula	Leesburg
Clermont	Mascotte
Eustis	Minneola
Fruitland Park	Montverde
Groveland	Mount Dora
Howey-In-The-Hills	Tavares
Lady Lake	Umatilla

DATA SOURCES:
 Planimetrics by Lake County GIS Department.
 2014 Traffic Counts data collection, compilation and map production by HDR and K&M Data Collection in cooperation with the Lake-Sumter MPO.

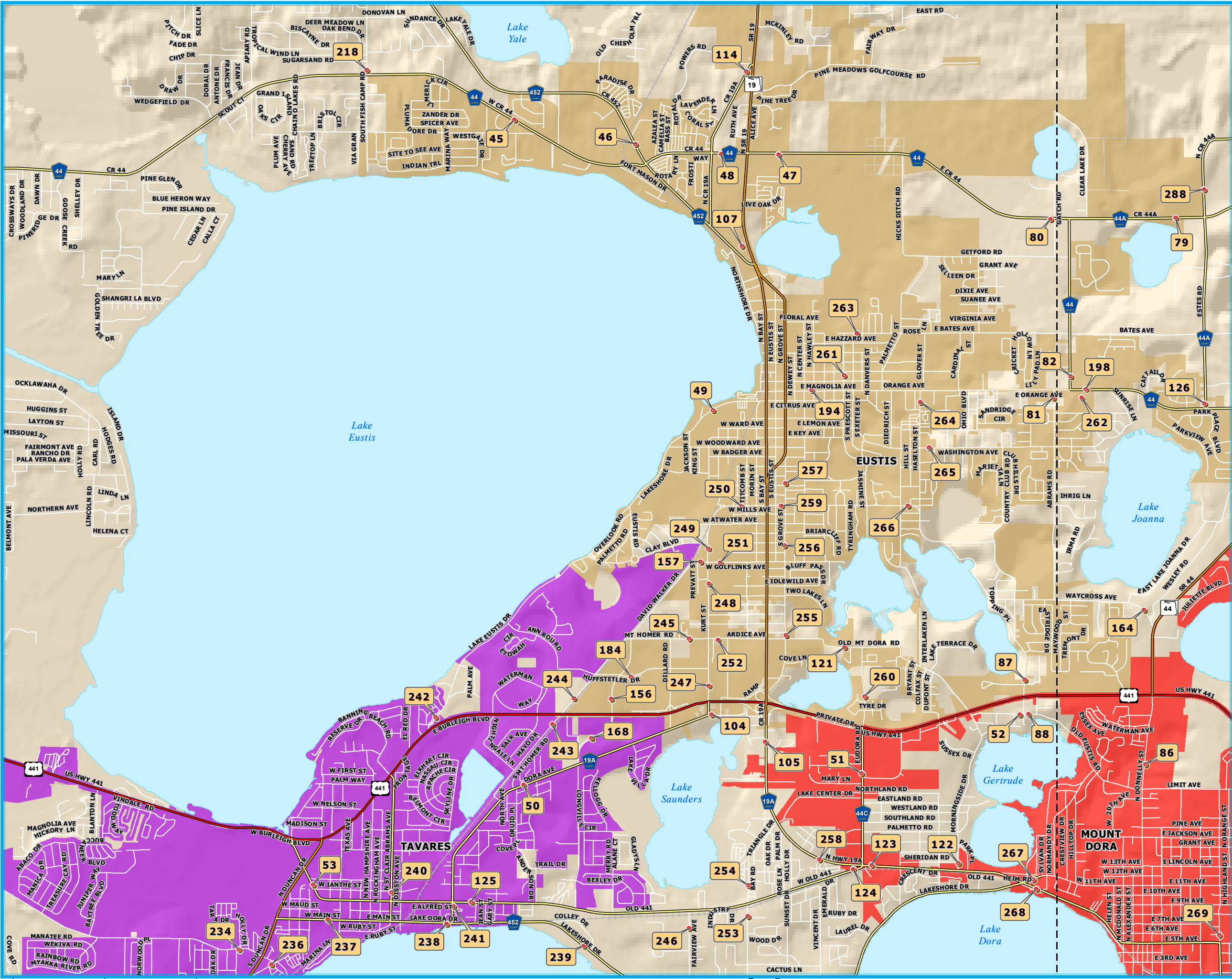
This map product was prepared from a Geographic Information System established by HDR and the Lake-Sumter Metropolitan Planning Organization. Its employees, agents and personnel, make no warranty as to its accuracy, and in particular its accuracy as to labeling, dimensions, contours, property boundaries, or placement or location of any map features thereon. The Lake-Sumter Metropolitan Planning Organization and its employees, agents and personnel MAKE NO WARRANTY OF MERCHANTABILITY OR WARRANTY FOR FITNESS FOR USE FOR A PARTICULAR PURPOSE EXPRESS OR IMPLIED WITH RESPECT TO THIS MAP PRODUCT. Independent verification of all data contained on this map product should be obtained by any user of this map.

MAP SERIES INDEX

MAP INSET

C-1

Lake-Sumter mpo Metropolitan Planning Organization



2014 LAKE COUNTY ANNUAL TRAFFIC COUNTS MAP SERIES



LAKE COUNTY FLORIDA

LEGEND

- Station ID
- Traffic Count Station Locations
- County Road
- State Road
- US Highway
- Interstate
- Turnpike
- Active Railroad
- Water Body
- County Boundary

MAP SHEET
COUNTY LINE

Incorporated Area

Astatula	Leesburg
Clermont	Mascotte
Eustis	Minneola
Fruitland Park	Montverde
Groveland	Mount Dora
Howey-In-The-Hills	Tavares
Lady Lake	Umatilla

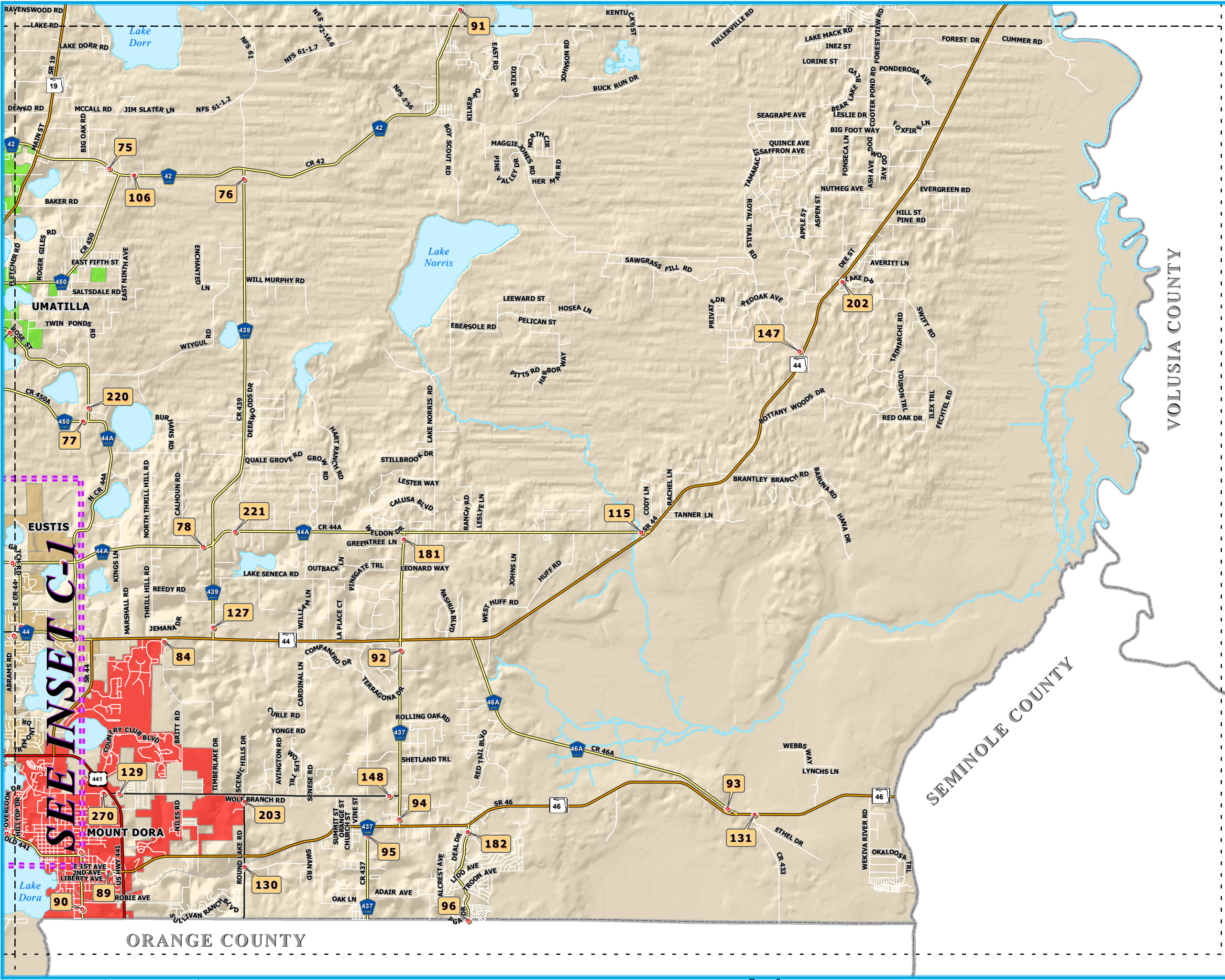
DATA SOURCES:
Planimetrics by Lake County GIS Department.
2014 Traffic Counts data collection, compilation and map production by HDR and K&M Data Collection in cooperation with the Lake-Sumter MPO.

This map product was prepared from a Geographic Information System established by HDR and the Lake-Sumter Metropolitan Planning Organization. Its employees, agents and personnel, make no warranty as to its accuracy, and in particular its accuracy as to labeling, dimensions, contours, property boundaries, or placement or location of any map features thereon. The Lake-Sumter Metropolitan Planning Organization and its employees, agents and personnel MAKE NO WARRANTY OF MERCHANTABILITY OR WARRANTY FOR FITNESS OF USE FOR A PARTICULAR PURPOSE EXPRESS OR IMPLIED WITH RESPECT TO THIS MAP PRODUCT. Independent verification of all data contained on this map product should be obtained by any user of this map.

MAP SERIES INDEX

MAP SHEET D

North arrow and Lake-Sumter MPO logo.



2014 LAKE COUNTY ANNUAL TRAFFIC COUNTS MAP SERIES



LAKE COUNTY FLORIDA

LEGEND Station ID

- Traffic Count Station Locations
- County Road
- State Road
- US Highway
- Interstate
- Turnpike
- Active Railroad
- Water Body
- County Boundary

Incorporated Area

- | | |
|--------------------|------------|
| Astatula | Leesburg |
| Clermont | Mascotte |
| Eustis | Minneola |
| Fruitland Park | Montverde |
| Groveland | Mount Dora |
| Howey-In-The-Hills | Tavares |
| Lady Lake | Umatilla |

DATA SOURCES:

Planimetrics by Lake County GIS Department.
 2014 Traffic Counts data collection, compilation and map production by HDR and K&M Data Collection in cooperation with the Lake-Sumter MPO.

This map product was prepared from a Geographic Information System established by HDR and the Lake-Sumter Metropolitan Planning Organization. Its employees, agents and personnel, make no warranty as to its accuracy, and in particular its accuracy as to labeling, dimensions, contours, property boundaries, or placement or location of any map features thereon. The Lake-Sumter Metropolitan Planning Organization and its employees, agents and personnel MAKE NO WARRANTY OF MERCHANTABILITY OR WARRANTY FOR FITNESS OF USE FOR A PARTICULAR PURPOSE EXPRESS OR IMPLIED WITH RESPECT TO THIS MAP PRODUCT. Independent verification of all data contained on this map product should be obtained by any user of this map.

MAP SERIES INDEX

State of Florida

MAP SHEET E



2014 Lake County Annual Traffic Counts

MAP STA #	ROAD NAME	LOCATION	Map Sheet	TMS ID	S E C	T W P	R N G	ANNUAL ADJUSTED DAILY TRAFFIC (AADT)					5-YEAR ANNUAL AVERAGE GROWTH RATE PERCENT	ADJUSTED PEAK HR VOLUME 2014	BEGIN PEAK HOUR 2014	ADJUSTED P.M. PEAK HOUR VOLUME (3-7 pm reported as 15:00-19:00) 2014				
								2010	2011	2012	2013	2014				Total	NB/EB	SB/WB	Pk Dir	Time
1	C.R. 25	AT MARION CO LINE	C	366	5	18	24	7,099	7,533	8,123	7,034	8,608	4.94%	770	16:30	770	532	238	NB	16:30
2	MARION COUNTY RD	0.15 Mi E OF C.R. 25	C	373	5	18	24	2,166	2,053	2,106	1,788	1,803	-4.48%	198	16:15	198	73	125	EB	16:15
3	GRIFFIN AV	0.05 Mi E OF C.R. 25	C	390	8	18	24	2,288	2,295	2,066	2,336	2,336	0.52%	209	15:45	209	110	99	EB	15:45
4	LAKE GRIFFIN RD	0.27 Mi W OF CAROLINA AV	C	744	16	18	24	2,306	2,868	3,085	2,869	3,027	7.03%	290	17:15	290	190	100	EB	17:15
5	C.R. 466	0.10 Mi W OF CLAY AV	C	619	17	18	24	10,542	12,381	12,694	13,059	14,490	8.28%	1,257	15:00	1,257	682	575	EB	15:00
6	C.R. 466	AT SUMTER CO LINE	C	381	18	18	24	18,426	21,560	21,835	20,342	24,272	7.13%	2,188	15:15	2,188	1,053	1,136	WB	15:15
7	GRIFFIN VIEW DR	0.08 Mi E OF U.S. 27/U.S. 441	C	384	21	18	24	4,101	3,799	4,040	4,228	4,124	0.14%	388	7:15	356	213	143	EB	17:45
8	GRAYS AIRPORT RD	0.10 Mi N OF GRIFFIN VIEW DR	C	399	22	18	24	2,261	2,070	1,919	1,992	2,017	-2.82%	227	17:00	227	141	86	NB	17:00
9	GRIFFIN VIEW DR	0.12 Mi E OF GRAYS AIRPORT RD	C	386	23	18	24	1,430	1,669	1,506	1,493	1,673	4.00%	153	7:15	152	99	52	EB	17:30
10	C.R. 468	0.04 Mi N OF BERCKMAN ST	C	305	4	19	24	2,941	2,860	3,490	3,276	3,216	2.26%	296	15:45	296	157	139	NB	15:45
11	C.R. 466A	AT SUMTER CO LINE	C	689	6	19	24	10,168	10,874	11,669	13,504	15,281	10.72%	1,399	15:15	1,399	701	698	EB	15:15
12	C.R. 468	0.08 Mi S OF MYRTLE LAKE/URICK ST	C	303	9	19	24	5,629	5,351	6,259	5,992	5,781	0.67%	512	7:30	498	240	258	NB	16:45
13	SUNNYSIDE DR	0.09 Mi S OF MAIN ST (S.R. 44)	C	751	25	19	24	3,275	3,305	3,204	3,400	3,467	1.43%	328	7:30	315	214	101	SB	16:45
14	C.R. 468	0.09 Mi N OF S.R. 44	C	302	28	19	24	6,620	6,541	7,446	7,375	6,667	0.18%	581	16:00	581	275	306	SB	16:00
15	C.R. 470	0.06 Mi E OF SUMTER CO LINE	B	908	7	20	24	5,486	5,233	5,094	5,465	5,813	1.46%	492	7:15	485	277	208	EB	15:15
16	C.R. 48	0.25 Mi E OF U.S. 27	B	97	14	20	24	8,042	8,445	7,947	7,974	8,765	2.17%	739	15:45	739	379	360	EB	15:45
17	C.R. 48	0.18 Mi E OF C.R. 33	B	219	15	20	24	6,159	6,738	6,086	6,048	4,978	-5.18%	406	10:45	385	159	227	WB	16:30
18	C.R. 48	0.12 Mi W OF C.R. 33	B	224	22	20	24	2,314	2,385	2,204	2,242	2,221	-1.02%	199	16:15	199	77	122	WB	16:15
19	C.R. 33	0.06 Mi N OF AUSTIN MERRITT RD	B	231	10	21	24	3,928	3,352	3,355	3,444	3,259	-4.56%	271	7:15	265	168	97	SB	16:45
20	AUSTIN MERRITT RD	0.07 Mi W OF C.R. 33	B	679	10	21	24	1,062	1,076	1,038	1,060	1,131	1.58%	97	16:45	97	67	30	WB	16:45
21	BRIDGES RD	0.08 Mi E OF C.R. 33	B	669	10	21	24	810	658	786	837	789	-0.66%	67	7:00	67	19	48	WB	17:00
22	YOUTH CAMP RD	0.48 Mi W OF AUSTIN MERRITT RD	B	678	17	21	24	776	742	775	799	825	1.54%	85	16:45	85	59	26	WB	16:45
23	TUSCANOOGA RD	0.13 Mi W OF HONEYCUTT RD	B	101	31	21	24	438	428	397	458	503	3.50%	61	16:15	61	31	29	EB	16:15
24	C.R. 33	0.10 Mi N OF S.R. 50	B	235	14	22	24	4,397	4,513	4,470	4,337	3,937	-2.72%	329	15:30	329	184	145	NB	15:30
25	C.R. 565	0.08 Mi N OF SLOANS RIDGE RD	A	182	21	22	24	654	609	598	694	622	-1.25%	57	17:30	57	22	35	SB	17:30
26	EMPIRE CHURCH RD	0.10 Mi S OF ANDERSON ST	A	187	25	22	24	1,280	1,289	1,137	1,341	1,162	-2.40%	118	17:00	110	34	76	SB	17:00
27	GOOSE PRAIRIE RD	0.12 Mi W OF FELKINS RD	C	570	25	18	25	2,214	2,224	2,277	2,143	2,169	-0.51%	206	17:00	206	129	77	EB	17:00
28	EMERALDA AV	0.05 Mi N OF C.R. 44	C	326	35	18	25	3,050	3,227	3,191	3,378	3,191	1.14%	288	17:00	288	188	100	NB	17:00
29	C.R. 44	0.10 Mi S OF TREASURE ISLAND RD	C	339	9	19	25	8,467	8,532	9,299	8,430	8,082	-1.16%	755	7:30	752	541	211	EB	17:00
30	C.R. 449 (SILVER LAKE ROAD)	0.37 Mi S OF MORNINGSIDE DR	C	641	15	19	25	2,480	2,497	2,532	2,317	2,104	-4.02%	246	17:00	246	74	172	NB	17:00
31	C.R. 44	0.55 Mi N OF U.S. 441	C	329	20	19	25	8,764	10,361	8,877	9,819	9,885	3.06%	902	7:30	833	585	247	EB	17:00
32	C.R. 473	0.21 Mi N OF U.S. 441	C	826	24	19	25	12,446	12,895	12,939	12,696	13,030	1.15%	1,157	16:30	1,157	714	443	NB	16:30
33	SUNNYSIDE DR	0.04 Mi W OF TOMATO HILL RD	C	868	29	19	25	1,926	1,848	1,330	1,878	1,955	0.37%	195	7:15	185	72	113	EB	16:45
34	C.R. 48	0.18 Mi W OF S.R. 19	B	99	23	20	25	6,380	7,321	6,520	6,811	7,252	3.26%	577	15:15	577	322	254	EB	15:15
35	C.R. 565	0.07 Mi S OF U.S. 27	B	610	18	21	25	843	873	843	915	978	3.77%	110	17:00	110	34	76	SB	17:00
36	C.R. 561/C.R. 561A	0.09 Mi E OF U.S. 27	B	125	36	21	25	7,240	7,619	7,132	7,465	7,664	1.43%	708	16:45	708	359	349	EB	16:45
37	C.R. 561	0.16 Mi S OF BRIDGE #114046	B	781	23	22	25	2,761	2,839	2,746	2,483	2,886	1.12%	258	17:30	258	130	128	NB	17:30
38	LAKESHORE DR (CLERMONT)	0.30 Mi W OF HAMMOCK RIDGE RD	A	915	1	23	25	13,734	13,463	UC	13,226	11,897	-3.53%	UC	UC	UC	UC	UC	UC	UC
39	LAKESHORE DR (CLERMONT)	0.06 Mi E OF C.R. 561	A	165	14	23	25	2,154	2,535	1,837	1,930	1,942	-2.56%	166	17:00	166	92	74	EB	17:00
40	LAKE ERIE RD	0.06 Mi W OF S.R. 33	A	361	20	23	25	637	647	655	642	626	-0.44%	54	11:45	53	37	15	WB	17:00
41	C.R. 474	0.07 Mi E OF S.R. 33	A	94	21	24	25	2,588	3,332	2,404	2,492	2,702	1.08%	236	6:30	178	68	110	WB	16:15
42	C.R. 450	0.18 Mi W OF ST THOMAS AV, AT MARION C	C	76	5	18	26	1,580	1,512	2,310	1,467	1,414	-2.73%	144	16:30	144	65	79	WB	16:30
43	C.R. 450	0.06 Mi W OF OWENS LN	C	77	11	18	26	2,730	2,375	1,390	2,151	2,098	-6.37%	185	6:45	183	92	91	EB	17:15
44	C.R. 450	0.08 Mi E OF SR 19	C	78	12	18	26	4,864	4,741	4,753	4,524	4,527	-1.78%	440	17:00	440	252	188	EB	17:00
45	C.R. 44	0.39 Mi W OF GRAND ISLAND SHORES RD	C-1	341	33	18	26	11,368	11,551	11,161	12,583	11,029	-0.75%	979	17:00	979	528	450	EB	17:00
46	C.R. 452	0.16 Mi N OF C.R. 44	C-1	318	34	18	26	9,725	7,995	9,128	14,189	7,681	-5.73%	641	7:00	635	342	294	NB	16:45
47	C.R. 44	0.14 Mi E OF SR 19	C-1	814	35	18	26	9,764	10,200	9,407	12,943	9,799	0.09%	915	17:00	915	470	445	EB	17:00
48	C.R. 44	0.15 Mi W OF SR 19	C-1	735	35	18	26	12,944	13,245	10,725	12,545	12,170	-1.53%	1,044	17:00	1,044	519	525	EB	17:00
49	LAKESHORE DR (EUSTIS)	0.09 Mi E OF KING ST	C-1	378	11	19	26	5,429	5,214	5,037	5,043	5,171	-1.21%	447	7:30	441	254	188	EB	16:45
50	C.R. 19A	0.05 Mi E OF DRUID PL.	C-1	734	21	19	26	5,234	4,969	4,963	4,593	4,870	-1.78%	445	17:00	445	203	242	EB	17:00
51	C.R. 44C (EUDORA RD)	0.32 Mi S OF U.S. 441	C-1	636	23	19	26	9,377	10,281	9,411	9,142	9,648	0.72%	814	14:45	785	404	382	SB	15:00

2014 Lake County Annual Traffic Counts

MAP STA #	ROAD NAME	LOCATION	Map Sheet	TMS ID	S E C	T W P	R N G	ANNUAL ADJUSTED DAILY TRAFFIC (AADT)					5-YEAR ANNUAL AVERAGE GROWTH RATE PERCENT	ADJUSTED PEAK HR VOLUME 2014	BEGIN PEAK HOUR 2014	ADJUSTED P.M. PEAK HOUR VOLUME (3-7 pm reported as 15:00-19:00) 2014				
								2010	2011	2012	2013	2014				Total	NB/EB	SB/WB	Pk Dir	Time
								52	OLD EUSTIS RD	0.05 Mi W OF E CROOKED LAKE RD	C-1	51				24	19	26	1,601	1,633
53	OLD 441/SR 500A (ALFRED)	0.11 Mi E OF S.R. 19	C-1	714	29	19	26	8,703	9,288	9,386	9,279	16,495	17.33%	1,361	16:15	1,361	774	587	EB	16:15
54	C.R. 452 (LAKESHORE DR)	0.13 Mi E OF BAY RD	C	622	35	19	26	1,515	1,683	1,629	1,440	1,481	-0.57%	155	16:30	155	78	78	WB	16:30
55	C.R. 561	0.26 Mi S OF S.R. 19	C	613	6	20	26	11,324	11,447	11,746	11,446	10,380	-2.15%	948	16:30	948	464	484	SB	16:30
56	C.R. 448	0.12 Mi E OF C.R. 561	B	69	8	20	26	6,512	6,382	6,642	7,070	7,625	4.02%	756	16:45	756	308	448	WB	16:45
57	C.R. 561	0.07 Mi S OF WOODLAND DR	B	118	20	20	26	6,785	6,932	6,694	6,779	7,393	2.17%	710	7:30	677	305	371	SB	16:30
58	DUDA RD	0.16 Mi E OF C.R. 448A	B	590	24	20	26	4,745	4,427	4,974	3,851	4,615	-0.69%	396	6:45	379	174	205	WB	16:30
59	C.R. 48	0.15 Mi E OF C.R. 561	B	356	32	20	26	4,671	4,263	4,582	4,694	5,448	3.92%	867	7:45	563	298	265	EB	15:00
60	C.R. 561	0.55 Mi S OF C.R. 48	B	719	32	20	26	7,044	7,765	7,351	8,011	8,772	5.64%	854	7:30	829	358	471	SB	17:00
61	C.R. 561	0.13 Mi S OF C.R. 455	B	121	17	21	26	5,413	5,021	4,909	4,978	6,147	3.23%	636	16:45	636	320	316	NB	16:45
62	C.R. 561A	0.18 Mi E OF C.R. 561	B	596	30	21	26	1,113	1,134	1,099	1,214	1,397	5.85%	146	6:45	126	69	57	EB	17:15
63	C.R. 561	0.04 Mi N OF C.R. 561A	B	0	30	21	26	5,375	5,675	5,698	5,601	6,289	4.00%	595	16:45	595	271	324	SB	16:45
64	C.R. 561A	0.35 Mi E OF SCRUB JAY RD	B	596	32	21	26	1,059	1,138	1,052	1,214	1,378	6.80%	132	6:45	130	58	72	EB	17:15
65	C.R. 455	0.05 Mi W OF FOSGATE RD	B	86	3	22	26	2,372	2,478	2,293	2,842	2,601	2.33%	286	7:00	264	146	119	EB	17:15
66	C.R. 561 (LAKE MINNEOLA SHO)	0.11 Mi W OF U.S. 27	B	602	7	22	26	6,848	7,065	7,021	7,903	7,561	2.51%	644	17:00	644	281	362	WB	17:00
67	C.R. 455	0.10 Mi N OF MAGNOLIA CREEK LN	B	87	14	22	26	4,897	5,132	5,063	5,515	6,298	6.49%	671	7:00	596	288	309	SB	15:00
68	C.R. 50	0.05 Mi W OF PARK TRAIL DR	B	158	17	22	26	8,875	9,168	9,118	9,478	10,129	3.36%	860	16:45	860	377	483	WB	16:45
69	C.R. 50	0.06 Mi W OF ORANGE CO LINE	A	155	25	22	26	6,990	6,309	5,134	5,192	6,100	-3.35%	689	17:00	689	148	541	WB	17:00
70	C.R. 455	0.25 Mi N OF S.R. 50	A	89	26	22	26	6,138	7,033	6,271	6,735	7,336	4.56%	671	17:00	671	410	262	NB	17:00
71	ANDERSON HILL RD	0.11 Mi E OF LAKESHORE DR	A	694	31	22	26	1,778	1,584	1,705	1,831	1,578	-2.95%	146	17:30	146	104	42	EB	17:30
72	C.R. 445A	0.18 Mi E OF S.R. 19	E	269	8	16	27	945	1,237	1,040	961	1,012	1.72%	104	15:45	104	51	53	WB	15:45
73	C.R. 445	0.47 Mi E OF DEER RD EAST	E	644	4	17	27	564	560	639	453	451	-5.43%	54	14:45	54	27	27	WB	15:00
74	C.R. 42	AT MARION CO LINE	C	408	31	17	27	3,446	3,324	3,180	3,515	3,334	-0.82%	293	15:15	293	120	173	WB	15:15
75	C.R. 42	0.14 Mi W OF C.R. 450	D	411	32	17	27	2,978	U/C	2,305	2,738	2,583	-3.49%	235	16:15	403	214	189	NB	16:15
76	C.R. 439	0.10 Mi S OF C.R. 42	D	349	3	18	27	2,362	2,214	2,375	2,422	2,343	-0.20%	233	17:15	233	78	156	WB	17:15
77	C.R. 450A	0.06 Mi W OF C.R. 44A NORTH	D	81	20	18	27	1,278	1,148	1,162	1,105	1,133	-2.97%	134	16:45	134	56	79	WB	16:45
78	C.R. 44A	0.18 Mi W OF C.R. 439	D	351	34	18	27	4,518	3,968	3,832	4,114	3,789	-4.30%	371	16:15	371	165	205	EB	16:15
79	C.R. 44A	0.10 Mi W OF ESTES RD	C-1	639	5	19	27	4,758	4,641	4,537	4,731	4,277	-2.63%	399	16:45	399	184	214	EB	16:45
80	C.R. 44	0.13 Mi W OF C.R. 44/C.R. 44A	C-1	817	6	19	27	8,959	9,251	9,515	9,312	9,005	0.13%	822	17:00	822	423	399	WB	17:00
81	ABRAMS RD	0.06 Mi S OF S.R. 44	C-1	731	7	19	27	4,269	4,258	3,846	4,148	3,962	-1.85%	379	16:15	379	201	178	NB	16:15
82	C.R. 44	0.10 Mi N OF S.R. 44	C-1	344	7	19	27	7,970	7,602	7,917	6,891	6,784	-3.95%	629	17:00	629	346	282	NB	17:00
83	C.R. 44B	0.21 Mi S OF S.R. 44																		
84	BRITT RD	0.06 Mi S OF S.R. 44	D	665	9	19	27	1,830	1,650	1,681	1,780	1,878	0.65%	213	7:15	200	73	128	NB	16:15
85	C.R. 44B	0.16 Mi N OF U.S. 441																		
86	DONNELLY ST.	0.46 Mi S OF U.S. 441	C-1	345	19	19	27	10,429	10,390	9,937	10,354	10,446	0.04%	959	12:00	883	494	389	NB	15:45
87	EAST CROOKED LAKE RD	0.08 Mi N OF U.S. 441	C-1	584	19	19	27	4,153	4,173	3,984	4,224	4,367	1.27%	412	16:30	412	253	159	EB	16:30
88	OLD EUSTIS RD	0.05 Mi E OF E CROOKED LK RD	C-1	51	19	19	27	1,588	1,634	1,586	1,414	1,521	-1.08%	168	16:30	168	103	65	EB	16:30
89	C.R. 46 (SANFORD RD)	0.18 Mi W OF U.S. 441	D	805	32	19	27	5,537	5,809	5,507	5,809	6,533	4.22%	590	16:45	590	291	299	WB	16:45
90	OLD 441/SR. 500A (MT DORA)	0.03 Mi S OF ROBIE AV	D	545	32	19	27	4,241	3,979	4,210	4,138	4,005	-1.42%	407	16:45	407	167	240	NB	16:45
91	C.R. 42	0.15 Mi N OF RANCHO LN	E	417	20	17	28	2,551	2,755	2,510	2,569	2,452	-0.99%	222	15:30	222	108	114	WB	15:30
92	C.R. 437	0.09 Mi S OF S.R. 44	D	249	7	19	28	5,907	5,954	5,991	6,559	6,508	2.45%	653	17:15	653	438	215	NB	17:15
93	C.R. 46A	0.11 Mi N OF S.R. 46	D	615	25	19	28	7,224	6,812	6,826	6,905	6,752	-1.68%	691	16:45	691	477	214	NB	16:45
94	C.R. 437	0.08 Mi N OF S.R. 46	D	251	30	19	28	9,124	8,929	9,082	9,073	9,369	0.66%	955	7:30	907	563	344	NB	17:00
95	C.R. 437	0.17 Mi S OF S.R. 46	D	252	30	19	28	6,600	6,724	6,709	7,240	7,261	2.42%	744	17:00	744	304	440	NB	17:00
96	C.R. 435	AT ORANGE CO LINE	D	651	32	19	28	5,058	4,877	5,049	5,121	4,761	-1.50%	524	17:00	524	211	313	NB	17:00
97	C.R. 42	0.16 Mi W OF CROWS BLUFF RD	E	739	38	17	29	3,937	3,992	3,708	3,681	3,691	-1.60%	355	16:45	355	244	111	WB	16:45
98	C.R. 467	0.33 Mi W OF U.S. 27/U.S. 441	C	824	15	19	24	4,408	4,979	6,010	5,447	6,121	8.55%	561	16:00	561	266	295	WB	16:00
99	MAIN ST (LEESBURG)	0.08 Mi E OF U.S. 27/14th ST	C	841	26	19	24	11,472	12,151	11,185	10,588	10,612	-1.93%	893	15:00	893	398	495	WB	15:00
100	MAIN ST (LEESBURG)	0.10 Mi W OF U.S. 27/14th ST	C	470	27	19	24	10,248	10,622	9,932	9,786	9,508	-1.86%	843	15:00	843	462	381	WB	15:00
101	RADIO RD	0.12 Mi N OF U.S. 441/S.R. 500	C	501	23	19	25	8,085	7,818	7,711	8,154	6,829	-4.13%	601	17:00	601	374	227	NB	17:00
102	C.R. 561	0.08 Mi S OF C.R. 565B/LOG HOUSE	A	128	11	23	25	2,595	2,586	2,250	2,583	2,557	-0.37%	578	7:45	175	112	62	NB	15:00

2014 Lake County Annual Traffic Counts

MAP STA #	ROAD NAME	LOCATION	Map Sheet	TMS ID	S E C	T W P	R N G	ANNUAL ADJUSTED DAILY TRAFFIC (AADT)					5-YEAR ANNUAL AVERAGE GROWTH RATE PERCENT	ADJUSTED PEAK HR VOLUME 2014	BEGIN PEAK HOUR 2014	ADJUSTED P.M. PEAK HOUR VOLUME (3-7 pm reported as 15:00-19:00) 2014				
								2010	2011	2012	2013	2014				Total	NB/EB	SB/WB	Pk Dir	Time
103	S.R. 33	0.18 Mi S OF C.R. 561	A	4	8	24	25	5,648	5,138	5,644	4,630	4,803	-3.97%	355	7:15	325	180	144	NB	15:45
104	C.R. 19A	95 Ft E OF KURT ST	C-1	659	23	19	26	3,981	3,980	3,569	3,720	2,527	-10.74%	250	11:15	190	89	100	EB	16:15
105	C.R. 19A	0.12 Mi S OF U.S. 441	C-1	287	23	19	26	13,091	14,383	13,193	13,405	13,833	1.39%	1,151	11:15	1,111	576	535	SB	16:30
106	C.R. 42	0.58 Mi E OF C.R. 450	D	412	33	17	27	3,920	3,489	3,714	3,704	3,549	-2.45%	331	17:00	331	160	171	WB	17:00
107	C.R. 452 (EUSTIS)	0.15 Mi W OF S.R. 19	C-1	316	2	19	26	11,247	12,385	9,974	12,565	11,112	-0.30%	996	16:45	996	579	417	EB	16:45
108	U.S. 27/U.S. 441	0.10 Mi S OF SUMTER CO LINE	C	298	6	18	24	32,766	32,752	30,560	29,480	33,086	0.24%	2,977	12:00	2,769	1,378	1,390	SB	15:00
109	GRAND HIGHWAY	0.14 Mi N OF S.R. 50	A	179	29	22	26	4,806	5,260	5,223	6,005	5,726	4.47%	517	16:45	517	280	237	NB	16:45
110	S.R. 40	AT MARION CO LINE	E	458	39	15	28	4,120	4,730	5,266	4,918	4,088	-0.20%	347	11:15	314	162	152	EB	16:15
111	S.R. 19	AT MARION CO LINE	E	268	30	15	28	1,988	1,853	1,499	1,979	1,284	-10.35%	108	9:45	86	36	50	NB	16:45
112	EAGLESNEST RD	0.045 Mi E OF U.S. 27/U.S. 441	C	313	28	18	24	3,080	3,115	2,912	2,656	2,447	-5.59%	233	16:30	233	166	67	EB	16:30
113	C.R. 452	0.20 Mi S OF SOUTH EM-EN-EL GROVE RD	C	324	14	18	25	6,517	5,867	5,767	6,426	5,571	-3.84%	514	16:45	514	274	240	NB	16:45
114	C.R. 19A	0.05 Mi W OF S.R. 19	C-1	352	35	18	26	2,692	2,714	2,786	2,851	2,561	-1.24%	217	7:00	215	89	126	WB	15:30
115	C.R. 44A	0.08 Mi W OF S.R. 44	D	332	35	18	28	1,164	1,216	1,256	1,437	1,129	-0.76%	115	16:00	115	48	67	EB	16:00
116	C.R. 25A (FRUIT PK.)	0.063 Mi S OF U.S. 27/U.S. 441	C	652	4	19	24	6,523	6,615	7,586	8,072	7,358	3.06%	659	17:00	659	323	336	NB	17:00
117	C.R. 466A (PICCIOLA RD)	0.20 Mi N OF PICCIOLA CUTOFF	C	312	10	19	24	6,603	6,220	6,597	7,233	7,173	2.09%	618	16:15	618	401	217	NB	16:15
118	C.R. 25A (LEESBURG)	0.126 Mi W OF U.S. 27	C	379	34	19	24	388	343	332	341	239	-11.40%	29	16:15	29	15	14	WB	16:15
119	C.R. 44	0.07 Mi E OF C.R. 473	C	737	2	19	25	14,167	14,937	14,635	16,028	14,771	1.05%	1,343	16:30	1,343	513	830	EB	16:30
120	C.R. 44 LEG A	0.10 Mi NW OF U.S. 441	C	328	16	19	25	1,354	1,303	1,544	1,404	1,320	-0.64%	156	13:30	131	81	50	NB	16:00
121	OLD MT DORA RD	0.11 Mi W OF EUDORA RD	C-1	517	23	19	26	5,057	4,763	4,327	4,201	4,161	-4.76%	402	13:45	287	130	157	WB	15:30
122	MORNINGSIDE DR (MT DORA)	0.14 Mi N OF OLD 441	C-1	549	25	19	26	1,214	1,344	1,293	1,370	1,181	-0.70%	107	16:30	107	59	48	NB	16:30
123	OLD 441	0.20 Mi E OF EUDORA RD	C-1	712	25	19	26	11,633	13,462	12,118	12,723	10,908	-1.60%	907	17:00	907	466	441	EB	17:00
124	OLD 441	0.19 Mi W OF C.R. 19A/EUDORA RD	C-1	65	26	19	26	9,073	8,986	8,551	8,453	7,311	-5.26%	625	16:45	625	308	317	EB	16:45
125	OLD 441/ALFRED ST	0.12 Mi E OF C.R. 19A/DORA AV	C-1	713	28	19	26	9,913	9,653	9,731	9,631	7,784	-5.86%	679	16:45	679	335	344	EB	16:45
126	ESTES RD	0.035 Mi N OF S.R. 44	C-1	583	8	19	27	3,345	2,707	2,927	2,970	3,162	-1.40%	346	8:15	303	148	155	SB	15:15
127	C.R. 439	0.08 Mi N OF S.R. 44	D	346	10	19	27	3,470	3,223	3,212	3,173	3,248	-1.64%	330	16:30	330	218	112	NB	16:30
128	C.R. 445A	0.11 Mi W OF ASTOR PARK CUTOFF RD	E	272	37	15	27	1,593	1,520	1,447	1,965	1,599	0.10%	157	15:00	157	77	81	WB	15:00
129	WOLF BRANCH RD	0.12 Mi E OF U.S. 441	D	710	29	19	27	9,228	9,349	9,110	8,845	9,697	1.25%	899	7:45	866	505	361	EB	16:45
130	ROUND LAKE RD	0.17 Mi S OF S.R. 46	D	508	35	19	27	3,125	3,461	3,513	3,871	4,338	8.54%	443	7:15	388	220	168	SB	17:00
131	S.R. 46	0.17 Mi E OF C.R. 46A	D	245	25	19	28	17,636	17,132	16,372	18,278	17,308	-0.47%	1,639	17:00	1,639	692	947	WB	17:00
132	C.R. 33	0.34 Mi W OF U.S. 27	B	226	11	20	24	8,277	8,552	7,651	8,243	7,719	-1.73%	622	17:00	622	267	355	WB	17:00
133	C.R. 33	0.28 Mi S OF C.R. 470/C.R. 48	B	229	15	20	24	8,178	7,873	7,801	7,155	7,130	-3.37%	605	15:15	605	269	337	SB	15:15
134	C.R. 448	AT ORANGE CO LINE	B	71	13	20	26	5,023	4,822	4,902	5,076	5,524	2.40%	516	16:45	516	255	261	EB	16:45
135	C.R. 478	0.08 Mi E OF S.R. 19	B	597	7	22	25	732	828	996	991	936	6.33%	102	16:30	102	66	36	WB	16:30
136	C.R. 565A	0.2 Mi N OF S.R. 50	B	599	20	22	25	5,422	5,867	5,187	7,246	7,386	8.03%	720	6:45	692	333	359	NB	16:15
137	C.R. 565A	0.27 Mi S OF S.R. 50	A	594	20	22	25	1,881	1,882	1,891	1,982	1,965	1.10%	188	7:00	179	85	94	SB	16:45
138	C.R. 565B	0.10 Mi E OF C.R. 565A	A	593	3	23	25	1,928	1,921	2,015	1,252	2,055	1.61%	196	8:00	179	96	84	EB	16:15
139	C.R. 561	0.11 Mi E OF S.R. 33	A	131	8	24	25	1,036	1,372	1,171	1,285	1,231	4.41%	119	16:15	119	43	76	WB	16:15
140	S.R. 33	AT POLK CO LINE	A	1	28	24	25	4,255	3,738	4,283	3,787	3,384	-5.57%	245	8:45	241	108	133	NB	16:30
141	U.S. 27/S.R. 25	0.56 Mi N OF POLK CO LINE	A	25	35	24	26	34,415	40,721	36,605	37,367	35,361	0.68%	2,725	16:15	2,725	1,554	1,170	NB	16:15
142	U.S. 27/S.R. 25	0.53 Mi E OF C.R. 565	B	217	20	21	25	20,701	19,606	17,428	20,279	17,028	-4.77%	1,325	16:45	1,325	637	687	SB	16:45
143	JALARMY RD	0.29 Mi N OF C.R. 561	B	486	12	22	25	2,261	2,831	2,241	2,996	3,098	8.19%	297	17:00	297	121	176	NB	17:00
144	LOG HOUSE RD	0.05 Mi E OF C.R. 561	A	133	11	23	25	2,814	2,814	2,743	2,957	3,195	3.23%	451	7:30	249	124	125	WB	17:15
145	LAKE LOUISA RD	0.20 Mi S OF LAKESHORE DR	A	171	6	23	26	2,999	3,352	3,377	3,244	3,124	1.03%	290	7:00	263	162	102	NB	17:15
146	HARTWOOD MARSH RD	0.15 Mi E OF U.S. 27/S.R. 25	A	362	9	23	26	11,884	12,779	11,467	11,221	11,908	0.05%	1,110	7:45	1,056	429	627	WB	17:15
147	ROYAL TRAILS RD	0.11 Mi N OF S.R. 44	D	510	18	18	29	1,492	1,533	1,344	1,459	1,533	0.68%	160	17:00	160	127	34	NB	17:00
148	WOLF BRANCH RD	0.075 Mi W OF C.R. 437	D	49	19	19	28	3,922	4,129	4,072	4,148	4,429	3.09%	492	7:15	473	255	218	EB	17:00
149	LANE PARK CUTOFF	0.045 Mi E OF S.R. 19	B	558	6	20	26	1,498	1,806	1,484	1,612	1,597	1.61%	329	8:15	266	116	150	EB	15:45
150	HARTWOOD MARSH RD	1.09 Mi W OF ORANGE CO LINE	A	918	2	23	26	9,373	10,158	9,066	9,402	9,589	0.57%	951	17:00	951	736	215	WB	17:00
151	LK LOUISA RD	0.17 Mi W OF U.S. 27	A	174	16	23	26	4,235	4,113	4,026	3,877	3,894	-2.08%	364	17:15	364	103	262	WB	17:15
152	MAIN ST	0.05 Mi E OF S.R. 44 (TO U.S. 441)	C	478	25	19	24	4,293	4,248	3,998	3,943	3,982	-1.86%	339	14:45	339	209	130	WB	16:30
153	C.R. 48	0.12 Mi W OF U.S. 27	B	218	14	20	24	6,840	7,293	7,165	7,246	6,733	-0.39%	596	15:00	596	299	297	EB	15:00

2014 Lake County Annual Traffic Counts

MAP STA #	ROAD NAME	LOCATION	Map Sheet	TMS ID	S E C	T W P	R N G	ANNUAL ADJUSTED DAILY TRAFFIC (AADT)					5-YEAR ANNUAL AVERAGE GROWTH RATE PERCENT	ADJUSTED PEAK HR VOLUME 2014	BEGIN PEAK HOUR 2014	ADJUSTED P.M. PEAK HOUR VOLUME (3-7 pm reported as 15:00-19:00) 2014						
								2010	2011	2012	2013	2014				Total	NB/EB	SB/WB	Pk Dir	Time		
154	OLD 441 ALFRED ST	0.08 Mi W OF S.R. 19																				
155	C.R. 474	0.04 Mi W OF U.S. 27/S.R. 25	A	703	27	24	26	3,080	4,183	2,359	2,331	1,939	-10.92%	148	16:15	148	57	91	WB	16:15		
156	DAVID WALKER DR	0.05 Mi N OF U.S. 441/S.R. 500	C-1	424	22	19	26	5,681	5,596	5,284	4,956	4,363	-6.39%	415	11:15	357	161	195	NB	16:00		
157	DAVID WALKER DR	0.05 Mi W OF KURT ST (EUSTIS)	C-1	721	15	19	26	5,258	5,181	5,023	4,218	4,562	-3.49%	389	15:45	389	153	236	EB	15:45		
158	C.R. 50	0.08 Mi W OF C.R. 455	B	156	23	22	26	6,106	7,059	5,656	5,515	4,308	-8.35%	546	17:00	546	417	129	WB	17:00		
159	C.R. 25 (TEAGUE TL)	0.21 Mi S OF GRIFFIN AV	C	367	8	18	24	6,983	7,468	7,094	7,765	7,633	2.25%	692	15:00	692	383	309	NB	15:00		
160	ROLLING ACRES RD	0.10 Mi S OF U.S. 27/U.S. 441	C	843	8	18	24	14,747	15,541	15,752	16,031	19,180	6.79%	1,801	12:15	1,783	863	920	SB	15:00		
161	C.R. 44C (GRIFFIN RD)	0.061 Mi E OF C.R. 468	C	634	16	19	24	5,101	4,911	5,047	5,210	6,041	4.32%	551	8:00	467	249	217	WB	16:30		
162	C.R. 455	0.12 Mi E OF S.R. 19	B	718	11	21	25	2,443	2,244	2,187	2,139	2,291	-1.59%	220	7:15	183	86	97	WB	16:00		
163	HOOKS ST	0.06 Mi W OF U.S. 27	A	435	30	22	26	5,862	5,959	6,096	6,330	6,847	3.96%	584	16:45	584	357	227	WB	16:45		
164	WAYCROSS AV	0.126 Mi W OF S.R. 44	C-1	529	18	19	27	4,772	5,069	4,712	5,178	5,077	1.56%	484	17:30	484	297	187	WB	17:30		
165	HANCOCK RD	0.228 Mi S OF S.R. 50	A	911	27	22	26	14,408	15,786	15,407	15,769	17,586	5.11%	1,522	17:15	1,522	625	897	SB	17:15		
166	ROLLING ACRES RD	0.17 Mi N OF C.R. 466	C	845	17	18	24	12,295	14,558	15,001	15,683	17,210	8.77%	1,593	12:30	1,539	685	854	SB	15:15		
167	C.R. 466B	0.20 Mi S OF EMMAUS RD	C	308	2	19	24	3,530	4,074	3,282	4,726	4,375	5.51%	411	17:00	411	134	277	NB	17:00		
168	DAVID WALKER DR	0.20 Mi S OF U.S. 441	C-1	423	22	19	26	7,026	6,992	6,642	7,045	6,860	-0.59%	564	14:15	562	284	278	SB	16:30		
169	CITRUS TOWER BV	0.14 Mi N OF S.R. 50	A	833	28	22	26	13,810	14,794	13,398	13,811	17,147	5.56%	1,290	8:00	1,253	763	490	NB	17:30		
170	JOHNS LAKE RD	0.34 Mi E OF U.S. 27	A	487	32	22	26	5,743	6,194	5,816	7,104	6,936	4.83%	597	14:45	559	280	279	EB	16:00		
171	C.R. 466A	0.10 Mi W OF U.S. 27/U.S. 441	C	315	4	19	24	5,614	5,528	4,889	6,723	6,464	3.59%	550	15:15	550	214	337	WB	15:15		
172	C.R. 44A (GRIFFIN RD)	0.165 Mi W OF U.S. 27 (14th ST)	C	407	22	19	24	8,561	8,090	7,559	8,288	7,932	-1.89%	756	8:15	734	331	402	EB	15:30		
173	C.R. 473	0.083 Mi S OF C.R. 44	C	337	2	19	25	6,161	5,913	6,380	6,137	5,746	-1.73%	513	16:45	513	287	226	NB	16:45		
174	RADIO RD	0.084 Mi S OF C.R. 44	C	500	3	19	25	3,327	3,485	3,298	3,211	3,118	-1.61%	285	15:45	285	171	114	NB	15:45		
175	SLEEPY HOLLOW RD	0.064 Mi S OF U.S. 441	C	0	20	19	25	3,234	3,030	2,769	3,034	3,039	-1.54%	281	7:15	242	99	143	SB	17:30		
176	C.R. 561	0.08 Mi S OF S.R. 50	A	720	24	22	25	5,585	6,434	5,797	6,117	5,515	-0.32%	538	17:00	538	248	290	SB	17:00		
177	LAKESHORE DR (CLERMONT)	0.122 Mi N OF LOG HOUSE RD/ OSWALT RD	A	92	12	23	25	8,729	9,159	8,432	8,837	8,756	0.08%	755	7:30	715	468	247	SB	17:15		
178	CITRUS TOWER BV	0.113 Mi E OF U.S. 27	B	135	19	22	26	10,545	10,644	10,237	10,843	11,752	2.75%	972	16:45	972	409	563	WB	16:45		
179	N HANCOCK RD	0.102 Mi N OF S.R. 50	A	150	27	22	26	14,448	14,361	14,193	14,984	15,491	1.76%	1,263	16:30	1,263	634	629	NB	16:30		
180	HANCOCK RD	0.113 Mi N OF HARTWOOD MARSH RD	A	153	10	23	26	6,848	8,224	7,557	7,843	8,359	5.11%	752	17:15	752	325	427	NB	17:15		
181	C.R. 437	0.105 Mi S OF C.R. 44A	D	247	31	18	28	4,765	4,513	4,692	4,804	4,816	0.27%	513	17:00	513	336	177	NB	17:00		
182	C.R. 435	0.091 Mi S OF S.R. 46	D	649	29	19	28	6,897	6,687	6,724	6,142	6,263	-2.38%	668	17:15	668	372	297	SB	17:15		
183	C.R. 448	0.155 Mi W OF C.R. 561	B	67	7	20	26	2,401	2,755	2,013	3,145	3,009	5.81%	303	7:30	261	122	139	WB	16:00		
184	HUFFSTETLER DR	0.065 Mi E OF DAVID WALKER DR	C-1	483	22	19	26	781	679	815	715	490	-10.99%	54	13:00	46	29	17	EB	16:45		
185	HOOKS ST	0.7 Mi W OF HANCOCK RD	A	919	28	22	26	5,498	6,867	6,624	6,734	7,191	6.94%	622	8:00	571	242	329	WB	17:15		
186	LAKE ELLA RD	0.169 Mi W OF U.S. 27/U.S. 441	C	497	28	18	24	2,156	2,018	2,038	1,684	1,650	-6.47%	171	16:00	171	98	73	WB	16:00		
187	LAKE ELLA RD	0.20 Mi W OF MICRO RACETRACK RD	C	496	31	18	24	1,122	1,036	1,140	1,130	1,161	0.85%	137	16:15	137	65	72	EB	16:15		
188	MICRO RACETRACK RD	0.098 Mi N OF C.R. 466A	C	498	6	19	24	2,989	3,209	3,787	5,309	6,174	19.88%	548	11:45	532	240	291	SB	15:15		
189	C.R. 25A	0.103 Mi N OF C.R. 25A/URICK ST	C	655	9	19	24	4,320	4,560	5,850	5,726	5,737	7.35%	570	16:45	570	331	239	NB	16:45		
190	THOMAS AV	0.081 Mi N OF C.R. 44A/C.R. 44C	C	808	15	19	24	6,773	7,079	9,295	7,787	7,353	2.07%	720	15:45	720	365	356	NB	15:45		
191	C.R. 455	0.14 Mi E OF C.R. 561	B	83	17	21	26	1,295	1,374	1,220	1,395	1,391	1.80%	159	7:00	137	68	69	WB	17:15		
192	VISTA DEL LAGO BV	0.13 Mi W OF U.S. 27	A	167	9	23	26	1,251	1,305	1,428	1,169	1,334	1.62%	118	15:30	118	48	70	WB	15:30		
193	WILSON LAKE PARKWAY	0.02 Mi S OF U.S. 27	B	773	26	21	25	306	682	350	951	1,330	44.39%	114	7:15	106	51	56	SB	16:45		
194	ORANGE AV	0.161 Mi E OF S.R. 19 (EUSTIS)	C-1	536	11	19	26	12,176	11,913	11,043	10,248	10,384	-3.90%	932	16:30	932	489	443	EB	16:30		
195	CITRUS GROVE ROAD	0.14 Mi E OF U.S. 27	B	546	6	22	26	687	548	750	858	904	7.09%	104	6:30	100	58	42	EB	16:30		
196	BLACKSTILL LAKE RD	0.16 Mi N OF C.R. 50	B	672	16	22	26	3,018	3,000	2,887	3,163	3,106	0.72%	322	7:00	253	97	156	NB	18:00		
197	CITRUS TOWER BV	0.10 Mi N OF JOHNS LAKE RD	A	884	32	22	26	11,557	14,182	13,353	16,629	14,849	6.47%	1,209	16:45	1,209	490	719	SB	16:45		
198	ORANGE AV	720 Ft E OF C.R. 44 (BYPASS)	C-1	466	7	19	27	12,483	11,805	11,527	11,812	11,555	-1.91%	1,062	17:00	1,062	562	501	WB	17:00		
199	LAKE MACK DR	0.04 Mi S OF C.R. 42	E	564	17	17	29	1,607	1,591	1,646	1,435	1,399	-3.41%	125	17:15	125	82	43	SB	17:15		
200	GRIFFIN AV	0.085 Mi W OF C.R. 25	C	299	8	18	24	8,536	8,686	8,691	8,588	8,692	0.45%	755	15:00	755	429	327	EB	15:00		
201	ROLLING ACRES RD	0.053 Mi N OF LAKE ELLA RD	C	503	30	18	24	2,403	2,704	3,342	4,776	5,085	20.61%	509	16:00	509	239	270	SB	16:00		
202	LAKE DR	0.08 Mi S OF S.R. 44 (PINE LAKES)	D	568	8	18	29	803	710	735	721	818	0.46%	85	16:15	85	49	36	SB	16:15		
203	ROUND LAKE RD	0.05 Mi S OF WOLF BRANCH RD	D	505	26	19	27	2,454	2,269	2,306	2,355	2,546	0.93%	481	7:30	205	97	108	NB	17:00		
204	C.R. 470	0.536 Mi E OF TURNPIKE OVERPASS	B	223	17	20	24	5,552	5,404	5,760	4,988	4,262	-6.40%	350	15:30	350	166	184	WB	15:30		

2014 Lake County Annual Traffic Counts

MAP STA #	ROAD NAME	LOCATION	Map Sheet	TMS ID	S E C	T W P	R N G	ANNUAL ADJUSTED DAILY TRAFFIC (AADT)					5-YEAR ANNUAL AVERAGE GROWTH RATE PERCENT	ADJUSTED PEAK HR VOLUME 2014	BEGIN PEAK HOUR 2014	ADJUSTED P.M. PEAK HOUR VOLUME (3-7 pm reported as 15:00-19:00) 2014				
								2010	2011	2012	2013	2014				Total	NB/EB	SB/WB	Pk Dir	Time
205	SHIRLEY SHORES RD	0.15 Mi N OF C.R. 448	B	514	15	20	26	2,136	2,214	2,141	1,929	2,140	0.05%	210	7:15	177	119	58	NB	17:00
206	C.R. 565 (VILLA CITY RD)	0.134 Mi N OF S.R. 50	B	612	24	22	24	1,831	1,956	2,131	2,364	2,838	11.58%	294	16:30	294	162	131	NB	16:30
207	C.R. 561	0.10 Mi N OF C.R. 565A	B	605	14	22	25	4,331	4,342	3,958	3,914	4,173	-0.93%	412	16:45	412	191	221	SB	16:45
208	TURKEY FARM RD	0.040 Mi N OF C.R. 50	B	169	17	22	26	2,803	3,139	4,506	5,172	6,116	21.54%	748	6:30	542	359	183	NB	17:15
209	N HANCOCK RD	0.106 Mi S OF C.R. 50	B	148	16	22	26	11,007	10,587	10,745	11,404	14,302	6.77%	1,254	17:15	1,254	563	691	SB	17:15
210	OSWALT RD	0.126 Mi E OF LAKESHORE DR (CLERMONT)	A	170	12	23	25	3,726	3,921	3,676	3,712	3,596	-0.88%	350	17:00	350	243	107	EB	17:00
211	SHAY BV	0.158 Mi N OF GRIFFIN AV	C	511	7	18	24	2,567	2,591	2,375	3,279	3,324	6.67%	316	11:30	302	152	150	NB	15:45
212	W McCLENDON ST	0.024 Mi W OF U.S. 27/U.S. 441	C	550	20	18	24	492	892	594	448	395	-5.36%	44	12:30	29	7	22	WB	15:45
213	W LADY LAKE BV	0.029 Mi W OF U.S. 27/U.S. 441	C	493	20	18	24	1,175	1,536	1,281	2,039	1,132	-0.93%	102	13:30	97	45	53	WB	15:00
214	LADY LAKE BV	0.045 Mi E OF U.S. 27/U.S. 441	C	494	21	18	24	673	693	685	619	633	-1.54%	58	17:15	58	41	17	EB	17:15
215	GRAYS AIRPORT RD	0.10 Mi N OF EAGLESNEST RD	C	401	27	18	24	1,819	1,460	1,483	1,672	1,760	-0.83%	185	17:00	185	125	60	NB	17:00
216	SOUTH GRAYS AIRPORT RD	0.048 Mi E OF U.S. 27/U.S. 441	C	403	34	18	24	1,168	856	1,308	673	2,520	21.19%	237	17:00	237	147	90	EB	17:00
217	ARLINGTON AV	0.097 Mi S OF W LADY LAKE BV	C	681	20	18	24	1,254	1,348	1,149	1,264	1,432	3.38%	139	7:15	132	69	62	SB	16:30
218	SOUTH FISH CAMP RD	0.097 Mi N OF C.R. 44	C-1	577	32	18	26	1,228	1,142	1,396	1,427	1,327	1.95%	147	16:45	147	95	52	NB	16:45
219	ROSE ST	0.3 Mi E OF OAK ST	C	72	13	18	26	1,130	1,016	1,169	661	1,195	1.41%	153	6:45	112	43	69	WB	17:00
220	C.R. 44A (NORTH)	0.2 Mi N OF C.R. 450A	D	75	20	18	27	1,560	1,543	1,433	1,452	1,547	-0.20%	165	6:45	165	102	64	NB	16:00
221	C.R. 44A (EAST)	0.6 Mi E OF C.R. 439	D	335	34	18	27	4,429	3,814	UC	3,740	3,352	-6.73%	328	16:45	328	149	180	NB	16:45
222	THOMAS AV	0.102 Mi S OF C.R. 44A/C.R. 44C	C	527	22	19	24	6,029	6,519	8,107	7,011	7,479	5.54%	671	15:45	671	296	375	NB	15:45
223	LONE OAK DR	0.15 Mi S OF W MAIN ST	C	685	27	19	24	2,978	3,386	3,596	2,834	2,657	-2.81%	264	14:30	251	115	136	NB	15:00
224	GRIFFIN RD	0.123 Mi E OF U.S. 27/U.S. 441	C	404	14	19	24	2,496	2,500	2,714	2,279	2,045	-4.86%	320	7:45	228	109	119	WB	16:45
225	LEE ST	0.155 Mi N OF U.S. 441	C	555	23	19	24	2,233	2,842	4,432	2,071	2,235	0.03%	207	16:30	207	113	94	SB	16:30
226	LEE ST	0.115 Mi S OF U.S. 441	C	556	23	19	24	2,516	2,970	3,185	2,992	2,743	2.19%	279	7:30	272	100	171	NB	16:30
227	CANAL ST	0.026 Mi N OF MAIN ST	C	663	26	19	24	4,461	4,044	3,942	4,101	3,913	-3.22%	377	15:00	377	216	162	NB	15:00
228	CANAL ST	0.035 MI S OF MAIN ST	C	663	26	19	24	3,500	3,348	3,357	4,865	3,183	-2.35%	308	12:15	297	130	167	SB	15:00
229	LAKE ST	0.064 Mi N OF MAIN ST	C	723	25	19	24	2,991	2,561	2,987	2,816	2,621	-3.25%	211	13:00	190	93	97	SB	15:00
230	LAKE ST	0.098 Mi S OF MAIN ST	C	566	25	19	24	4,251	4,184	4,305	3,555	3,114	-7.48%	245	11:30	231	129	102	NB	16:15
231	MAIN ST	0.051 Mi E OF CANAL ST	C	474	25	19	24	5,466	5,460	5,216	5,026	4,815	-3.12%	424	15:00	424	212	212	WB	15:00
232	MAIN ST	0.09 Mi E OF LAKE ST	C	476	25	19	24	4,775	5,062	4,877	3,533	4,569	-1.10%	435	16:30	435	156	279	EB	16:30
233	SUNNYSIDE DR	0.106 Mi S OF SUNNYSIDE DR (EAST)	C	525	30	19	25	1,379	1,517	1,459	1,437	1,957	9.15%	195	7:30	156	60	96	SB	16:00
234	DEAD RIVER RD	0.2 Mi W OF S.R. 19	C-1	589	31	19	26	6,241	6,377	6,273	5,854	6,284	0.17%	517	17:00	517	217	300	WB	17:00
235	WOODLEA RD	0.1 Mi W OF S.R. 19	C	533	31	19	26	2,744	2,971	2,525	2,792	989	-22.52%	123	14:45	103	27	75	EB	15:00
236	WELLS AV	0.12 Mi E OF S.R. 19	C	530	32	19	26	1,659	1,557	1,475	1,722	889	-14.44%	97	17:00	97	35	61	WB	17:00
237	MAIN ST	0.04 Mi W OF SINCLAIR AV	C-1	552	29	19	26	7,590	8,035	7,887	6,357	11,820	11.71%	1,111	16:30	1,111	391	721	WB	16:30
238	MAIN ST	0.3 Mi E OF DISSTON AV	C-1	656	28	19	26	1,791	2,156	2,068	1,800	2,103	4.09%	237	16:30	237	143	95	EB	16:30
239	C.R. 452 (LAKESHORE DR)	0.06 Mi W OF COLLEY DR. (EAST)	C-1	626	34	19	26	1,355	1,545	1,407	1,371	1,525	3.00%	154	16:15	154	91	63	EB	16:15
240	ST CLAIR ABRAMS AV	0.06 Mi N OF ALFRED ST	C-1	632	29	19	26	3,416	3,527	3,603	3,395	3,995	3.99%	398	14:30	375	224	152	NB	16:30
241	DORA AV	.01 Mi S OF ALFRED ST	C-1	713	28	19	26	954	1,039	1,095	829	1,268	7.37%	139	17:00	139	65	74	NB	17:00
242	LAKE EUSTIS DR	0.1 Mi N OF U.S. 441	C-1	375	21	19	26	5,804	5,739	5,071	5,433	5,445	-1.58%	501	16:45	501	282	219	SB	16:45
243	S. MT HOMER RD	0.05 Mi S OF U.S. 441	C-1	442	21	19	26	210	212	233	291	291	8.45%	32	11:00	23	18	6	NB	15:00
244	MT HOMER RD	0.14 Mi N OF U.S. 441	C-1	440	22	19	26	1,222	1,423	1,469	1,303	1,278	1.13%	119	14:30	119	41	78	SB	16:00
245	MT HOMER RD	0.1 Mi W OF KURT ST	C-1	439	15	19	26	4,112	3,677	3,433	3,118	3,052	-7.18%	292	14:00	274	127	147	SB	16:30
246	FAIRVIEW AV	0.1 Mi S OF ALFRED ST	C-1	761	27	19	26	719	699	717	675	553	-6.35%	58	13:30	45	27	18	SB	17:00
247	KURT ST	0.06 Mi S OF HUFFSTETLER DR	C-1	899	23	19	26	4,446	4,938	4,567	4,444	4,386	-0.34%	396	12:00	384	180	205	NB	16:15
248	KURT ST	0.1 Mi S OF W GOLFLINKS AV	C-1	913	14	19	26	3,873	4,063	4,005	3,476	3,395	-3.24%	340	16:30	340	143	197	NB	16:30
249	KURT ST	0.1 Mi N OF W GOLFLINKS AV	C-1	784	14	19	26	8,323	8,182	7,808	7,172	7,130	-3.79%	636	16:30	636	416	220	NB	16:30
250	LAKEVIEW AV	0.2 Mi W OF S.R. 19	C-1	779	14	19	26	7,266	7,598	7,391	6,748	6,443	-2.96%	599	16:15	599	227	372	EB	16:15
251	W GOLFLINKS AV	0.1 Mi E OF KURT ST	C-1	572	14	19	26	972	996	851	879	875	-2.58%	84	7:30	84	41	43	EB	16:45
252	ARDICE AV	0.05 Mi E OF KURT ST	C-1	682	23	19	26	5,466	5,090	4,798	4,886	4,689	-3.76%	435	14:30	430	217	212	EB	16:30
253	BAY RD	0.1 Mi S OF OLD 441	C-1	675	26	19	26	1,875	1,718	1,682	1,723	1,538	-4.83%	138	16:45	138	73	65	SB	16:45
254	BAY RD	0.1 Mi N OF OLD 441	C-1	674	26	19	26	2,840	2,926	2,905	2,495	2,127	-6.97%	198	11:15	172	51	122	SB	15:00
255	GROVE ST	0.02 Mi N OF OLD MT DORA RD	C-1	426	14	19	26	3,824	3,494	3,246	3,371	3,453	-2.52%	339	14:30	329	181	148	NB	16:00

2014 Lake County Annual Traffic Counts

MAP STA #	ROAD NAME	LOCATION	Map Sheet	TMS ID	S E C	T W P	R N G	ANNUAL ADJUSTED DAILY TRAFFIC (AADT)					5-YEAR ANNUAL AVERAGE GROWTH RATE PERCENT	ADJUSTED PEAK HR VOLUME 2014	BEGIN PEAK HOUR 2014	ADJUSTED P.M. PEAK HOUR VOLUME (3-7 pm reported as 15:00-19:00) 2014				
								2010	2011	2012	2013	2014				Total	NB/EB	SB/WB	Pk Dir	Time
256	GROVE ST	0.1 Mi N OF GOLFLINKS AV	C-1	428	14	19	26	3,125	2,978	2,733	2,529	2,619	-4.32%	265	14:30	244	147	97	NB	16:15
257	GROVE ST	0.1 Mi N OF LAKEVIEW AV	C-1	430	14	19	26	1,186	1,182	1,248	1,169	1,270	1.72%	120	16:15	120	24	96	NB	16:15
258	C.R. 19A	0.2 Mi S OF HOLLY DR	C-1	65	26	19	26	7,796	8,048	7,470	7,871	7,824	0.09%	675	14:30	649	335	314	SB	15:00
259	LAKEVIEW AV	.12 Mi E OF S.R. 19	C-1	429	14	19	26	5,684	5,011	4,620	5,293	5,101	-2.67%	451	15:45	451	224	227	WB	15:45
260	EUDORA RD	0.2 Mi N OF U.S. 441	C-1	579	24	19	26	3,747	3,153	2,730	4,454	4,838	6.60%	477	12:30	432	237	195	NB	15:15
261	PRESCOTT ST	0.12 Mi N OF E ORANGE AV	C-1	541	11	19	26	525	464	445	564	434	-4.65%	41	15:45	41	18	23	SB	15:45
262	BATES AV	0.07 Mi E OF C.R. 44	C-1	0	2	19	26	1,640	1,433	1,223	1,238	1,661	0.32%	407	8:00	297	107	190	WB	16:00
263	BATES AV	0.1 Mi E OF PRESCOTT ST	C-1	765	1	19	26	1,618	1,393	1,314	1,024	2,452	10.96%	301	7:00	201	86	115	WB	16:45
264	HASELTON ST	0.17 Mi S OF E ORANGE AV	C-1	432	12	19	26	1,858	1,778	1,942	1,604	1,687	-2.38%	169	7:00	153	71	82	NB	16:15
265	WASHINGTON AV	0.1 Mi E OF HASELTON ST	C-1	534	12	19	26	2,500	2,429	2,597	2,420	2,257	-2.53%	259	7:00	206	116	89	EB	16:15
266	LAKEVIEW AV	.01 Mi W OF HASELTON ST	C-1	901	13	19	26	3,103	3,231	3,272	2,984	2,941	-1.33%	292	17:00	292	173	119	EB	17:00
267	LAKESHORE DR	0.06 Mi N OF OLD 441	C-1	620	30	19	27	685	701	593	606	690	0.19%	68	16:30	68	43	25	NB	16:30
268	OLD 441	0.09 Mi E OF LAKESHORE DR	C-1	58	30	19	27	9,178	9,038	9,364	8,805	8,602	-1.61%	827	16:15	827	367	460	WB	16:15
269	HIGHLAND ST	0.04 Mi N OF 5th AV	C-1	434	29	19	27	1,637	1,849	2,270	2,267	2,403	10.07%	298	11:45	206	132	74	NB	17:15
270	LIMIT AV	.01 Mi W OF U.S. 441	D	709	20	19	27	2,068	2,195	2,201	2,035	2,405	3.85%	241	7:15	199	89	109	EB	16:15
271	C.R. 448A	0.2 Mi S OF C.R. 48	B	757	25	20	26	191	171	204	243	339	15.45%	39	10:00	28	12	15	SB	15:00
272	C.R. 448A	0.2 Mi N OF C.R. 48	B	819	24	20	26	3,859	4,149	3,795	3,933	4,512	3.99%	437	17:00	437	193	245	SB	17:00
273	TUSCANOOGA RD	.09 Mi N OF S.R. 50	B	104	15	22	24	2,273	2,191	2,208	2,182	2,203	-0.77%	209	16:15	209	123	86	NB	16:15
274	MASCOTTE EMPIRE RD (S. SU	.32 Mi S OF S.R. 50	B	181	14	22	24	571	675	562	912	793	8.55%	85	14:45	85	29	55	NB	15:00
275	C.R. 50/SUNSET AV	0.03 Mi N OF S.R. 50	B	161	14	22	24	1,229	989	1,403	1,026	1,144	-1.78%	126	17:00	126	52	74	SB	17:00
276	PALMETTO DR	0.043 Mi W OF C.R. 33	B	106	14	22	24	519	490	514	397	447	-3.65%	45	17:15	45	25	20	WB	17:15
277	UNDERPASS RD	0.036 Mi E OF C.R. 33	B	107	14	22	24	645	717	729	831	729	3.09%	75	16:45	75	45	30	EB	16:45
278	EAST AV	0.1 Mi N OF S.R. 50	A	834	19	22	26	5,294	5,540	5,043	5,606	5,703	1.88%	620	7:45	506	251	255	SB	15:15
279	MAIN ST	0.1 Mi N OF WASHINGTON ST	B	771	18	22	26	1,773	1,907	1,831	1,981	1,845	1.01%	179	8:00	165	69	97	SB	17:00
280	CITRUS TOWER BV	0.1 Mi S OF S.R. 50	A	146	28	22	26	12,828	13,786	11,986	13,799	15,687	5.16%	1,310	15:00	1,310	580	729	SB	15:00
281	HOOKS ST	0.12 W. OF CITRUS TOWER BV	A	482	29	22	26	3,000	4,047	3,813	6,588	7,154	24.27%	619	17:00	619	305	313	WB	17:00
282	EXCALIBUR RD	0.08 Mi S OF HOOKS ST	A	892	28	22	26	4,175	4,084	3,673	3,561	4,312	0.81%	746	6:45	415	233	182	SB	17:15
283	CITRUS TOWER BV	0.18 E. OF US 27	A	910	5	23	26	9,760	10,825	10,040	12,376	12,393	6.15%	1,079	7:00	987	422	564	WB	17:00
284	HAMMOCK RIDGE RD	0.21 W. OF US 27	A	897	5	23	26	9,614	9,880	9,982	13,124	12,516	6.82%	1,040	7:45	1,029	381	647	WB	17:15
285	LAKESHORE DR (CLERMONT)	0.14 E. OF HAMMOCK RIDGE ROAD	A	900	6	23	26	6,068	6,594	6,519	9,398	6,664	2.37%	593	17:15	593	376	217	WB	17:15
286	FOSGATE RD	0.19 Mi W OF GRASSY LAKE RD	B	895	8	22	26	1,161	1,052	1,424	1,571	2,196	17.28%	328	6:30	221	91	130	WB	15:00
287	STEVES RD	0.44 Mi W. OF CITRUS TOWER BV	A	886	29	22	26	4,088	4,545	4,863	5,529	5,637	8.36%	629	14:00	494	270	224	WB	15:30
288	CR 44A	0.17 Mi N. OF CR 44A	C-1	823	5	19	27	1,672	1,604	1,632	1,661	1,817	2.10%	182	16:00	182	112	69	NB	16:00
289	HOOKS ST	E. OF US 27	A	481	29	22	26	****	3,385	4,022	5,227	4,920	N/A	698	14:30	621	238	383	WB	15:00
290	GRAND HIGHWAY	N. OF HOOKS ST	A	0	29	22	26	****	3,345	3,982	8,585	6,243	N/A	505	16:00	505	233	272	SB	16:00
291	CR 48	AT SUMTER COUNTY LINE	B	225	7	21	24	****	*****	2,043	2,003	2,218	N/A	194	15:45	194	79	115	WB	15:45
292	CR 561A	West of CR 455	B	132	27	21	26	****	*****	*****	*****	1,496	N/A	180	16:00	180	123	57	EB	16:00
293	CR 50	East of Hancock Road	B	157	16	22	26	****	*****	*****	*****	9,591	N/A	900	17:00	900	345	555	WB	17:00
294	Simon Brown	East of SR33	B	0	7	22	24	****	*****	*****	*****	462	N/A	56	6:45	48	33	16	WB	17:00

**** - Data not available for that year

N/A = not available due to lack of previous years data

U/C Denotes station under construction during data collection period.

5 -Year Annual Average Percentage Growth Rate is computed as follows:

$$\text{"5-Year Annual Average Percentage Growth Rate"} = (1 + ((2014 \text{ AADT} - 2010 \text{ AADT}) / (2010 \text{ AADT}))^{(1/4)} - 1)$$

Stations Deleted from the program:

83
85
154