

# *2013 Lake County Annual Traffic Counts*



# LAKE COUNTY

---

# FLORIDA

Lake County Public Works  
Engineering Division  
437 Ardice Avenue  
Eustis, Florida 32726

## 2013 Lake County Traffic Counts for County Roads

---



Lake County Public Works Building



Typical view of Lake County Annual Traffic Count Station setup

---

Lake County Public Works  
Engineering Division  
437 Ardice Avenue  
Eustis, Florida 32726  
Phone (352) 483-9092 or (352) 483-9000

## *2013 Lake County Traffic Counts for County Roads*

---

### **Introduction**

Lake County Public Works Engineering Division is pleased to provide to all the Local Governments and Interested Others, the 2013 Annual Daily Traffic Counts for all of the Lake County maintained major roads. The 2013 Annual Daily Traffic Count Program is one of the responsibilities of the Lake County Public Works Engineering Division.

The Lake County Public Works Traffic Count Program is the enumeration of vehicular volumes taken at all 289 count stations on roads within the County. Count reports produced by this program reflect daily and hourly volumes. Traffic counts are used by planners and engineers as a basic scale of comparison indicating the relative importance of various links in a road system. The traffic counts are also used to determine the Operating Level of Service on a given section of roadway.

The next series of pages are Traffic Count Station Location Maps and Traffic Tables. Every effort has been made to make the 2013 Annual Daily Traffic Counts Book as accurate as possible. Any errors or omissions should be brought to the attention of the Lake County Public Works staff.

The 2013 Annual Traffic Count Book is a public document. Copies will be made available for public inspection at Lake County Public Works Departments offices, 437 Ardice Avenue, Eustis, Florida. The 2013 Traffic Count Book will be provided to interested parties on request. Cost for reproduction may be charged, in accordance with Lake County policies.

Lake County Public Works wishes to acknowledge the Lake-Sumter Metropolitan Planning Organization for their contributions to the 2013 Lake County Traffic Count Program.

The 2013 Annual Lake County Traffic Counts booklet is available for download free on our website:

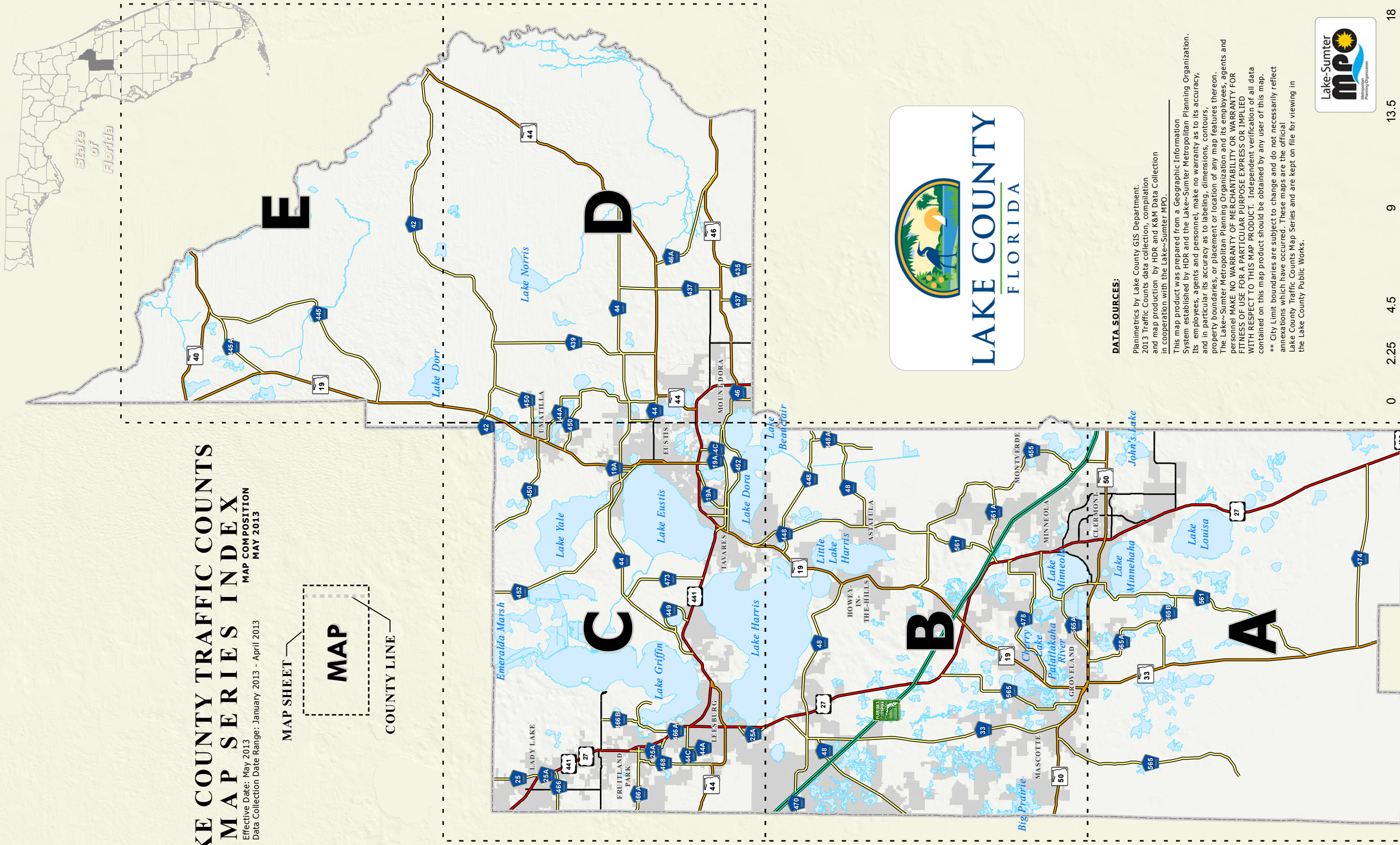
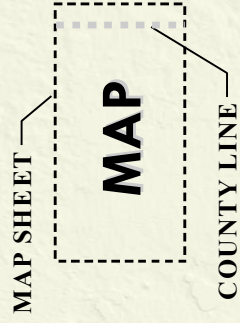
[http://www.lakecountyfl.gov/departments/public\\_works/engineering/traffic\\_count.aspx](http://www.lakecountyfl.gov/departments/public_works/engineering/traffic_count.aspx)



## LAKE COUNTY TRAFFIC COUNTS MAP SERIES INDEX

MAP COMPOSITION  
MAY 2013

Effective Date: May 2013  
Data Collection Date Range: January 2013 - April 2013

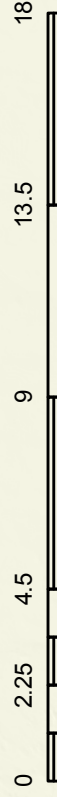


### DATA SOURCES:

Planimetrics by Lake County GIS Department.  
2013 Traffic Counts data collection, compilation  
and map production by HDR and K&M Data Collection  
in cooperation with the Lake-Sumter MPO.

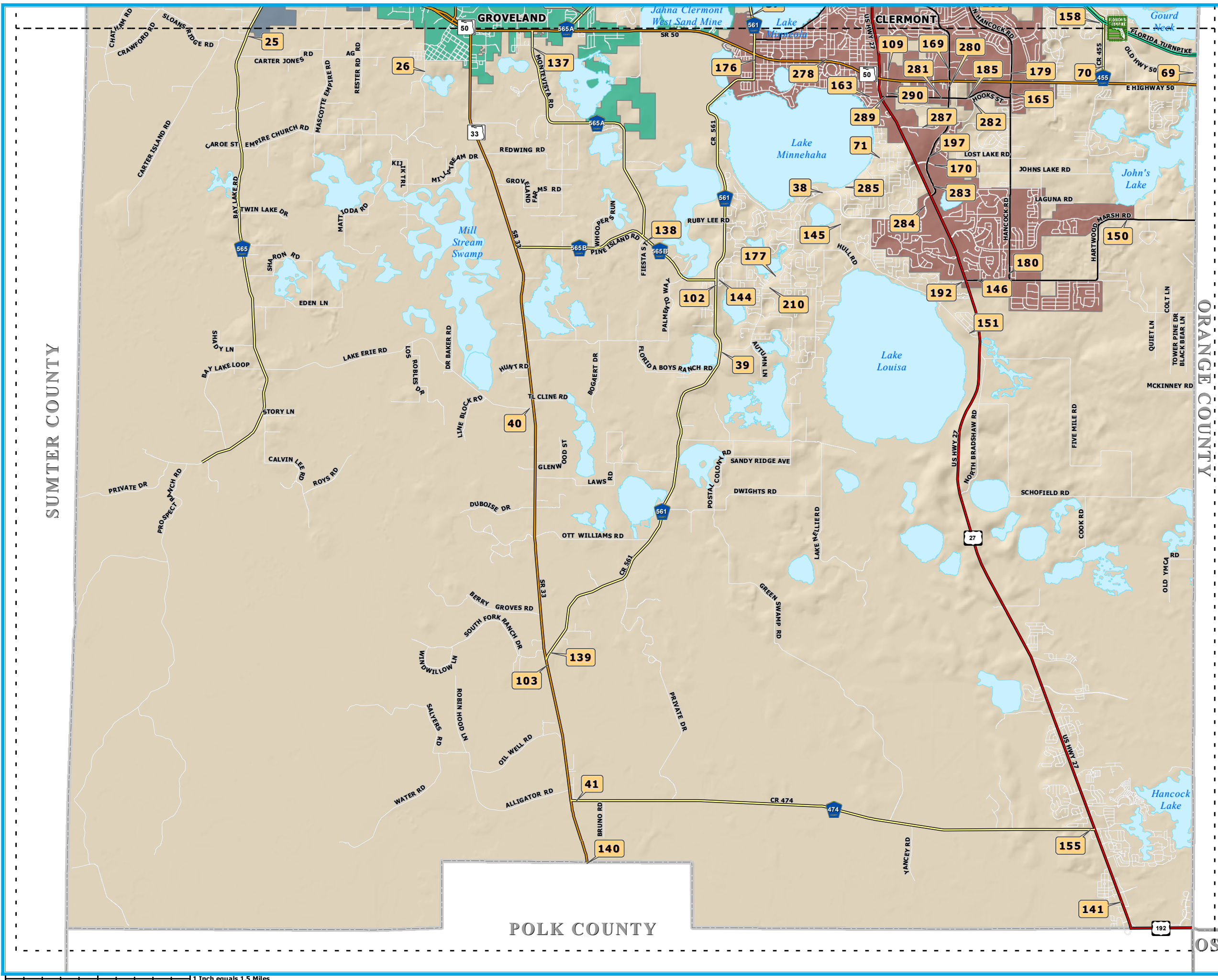
This map product was prepared from a Geographic Information  
System established by HDR and the Lake-Sumter Metropolitan Planning Organization.  
Its employees, agents and personnel make no warranty as to its accuracy,  
and in particular its accuracy as to labeling, dimensions, contours,  
property boundaries, or placement or location of any map features thereon.  
The Lake-Sumter Metropolitan Planning Organization and its employees, agents and  
personnel MAKE NO WARRANTY OF MERCHANTABILITY OR WARRANTY FOR  
FITNESS OF USE FOR A PARTICULAR PURPOSE EXPRESS OR IMPLIED  
WITH RESPECT TO THIS MAP PRODUCT. Independent verification of all data  
contained on this map product should be obtained by any user of this map.

\*\* City Limit boundaries are subject to change and do not necessarily reflect  
annexations which have occurred. These maps are the official  
Lake County Traffic Counts Map Series and are kept on file for viewing in  
the Lake County Public Works.



1 INCH EQUALS 4.5 MILES

E:\Data\LSMPO\_Traffic\_Counts\Map\_Docs\Draft\Lake\TrafficCountsProgram\_LakeCounty\_MapSheet2013\_11x17.mxd



# 2013 LAKE COUNTY ANNUAL TRAFFIC COUNTS MAP SERIES



**LEGEND**

- Station ID (Yellow circle with number)
- Traffic Count Station Location (Red dot)
- County Road (Blue line)
- State Road (Yellow line)
- US Highway (White line with shield)
- Interstate (Red and blue shield)
- Turnpike (Green line with shield)
- Active Railroad (Black line with cross-ticks)
- Water Body (Blue area)
- County Delineation (Grey outline)

**Incorporated Area**

Astatula	Leesburg
Clermont	Mascotte
Eustis	Minneola
Fruitland Park	Montverde
Groveland	Mount Dora
Howey-In-The-Hills	Tavares
Lady Lake	Umatilla

**DATA SOURCES:**  
 Planimetrics by Lake County GIS Department.  
 2013 Traffic Counts data collection, compilation and map production by HDR and K&M Data Collection in cooperation with the Lake-Sumter MPO.

This map product was prepared from a Geographic Information System established by HDR and the Lake-Sumter Metropolitan Planning Organization. Its employees, agents and personnel, make no warranty as to its accuracy, and in particular its accuracy as to labeling, dimensions, contours, property boundaries, or placement or location of any map features thereon. The Lake-Sumter Metropolitan Planning Organization and its employees, agents and personnel MAKE NO WARRANTY OF MERCHANTABILITY OR WARRANTY FOR FITNESS OF USE FOR A PARTICULAR PURPOSE EXPRESS OR IMPLIED WITH RESPECT TO THIS MAP PRODUCT. Independent verification of all data contained on this map product should be obtained by any user of this map.

**MAP SERIES INDEX**

**MAP SHEET A**

North arrow and Lake-Sumter MPO logo.

1 Inch equals 1.5 Miles

# 2013 LAKE COUNTY ANNUAL TRAFFIC COUNTS MAP SERIES



LAKE COUNTY FLORIDA

**LEGEND**

- Station ID (Red circle with number)
- Traffic Count Station Location (Red circle with number)
- County Road (Blue line with number)
- State Road (Yellow line with number)
- US Highway (Red line with number)
- Interstate (Blue shield with number)
- Turnpike (Green line with number)
- Active Railroad (Black line with cross-ticks)
- Water Body (Blue area)
- County Delineation (Dashed line)

**MAP SHEET**  
COUNTY LINE

**MAP**

**Incorporated Area**

Astatula	Leesburg
Clermont	Mascotte
Eustis	Minneola
Fruitland Park	Montverde
Groveland	Mount Dora
Howey-In-The-Hills	Tavares
Lady Lake	Umatilla

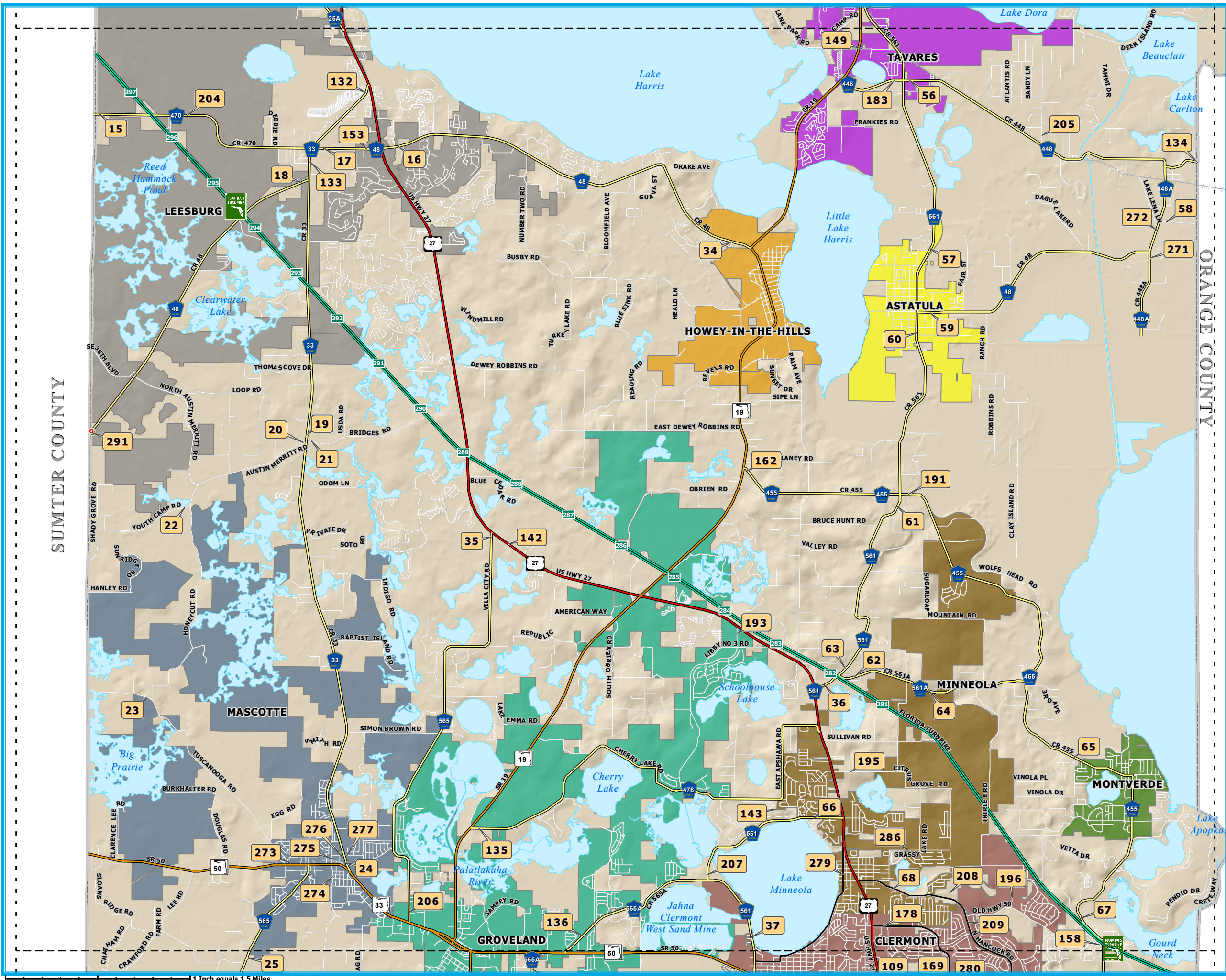
**DATA SOURCES:**  
 Planimetrics by Lake County GIS Department.  
 2013 Traffic Counts data collection, compilation and map production by HDR and K&M Data Collection in cooperation with the Lake-Sumter MPO.

This map product was prepared from a Geographic Information System established by HDR and the Lake-Sumter Metropolitan Planning Organization. Its employees, agents and personnel, make no warranty as to its accuracy, and in particular its accuracy as to labeling, dimensions, contours, property boundaries, or placement or location of any map features thereon. The Lake-Sumter Metropolitan Planning Organization and its employees, agents and personnel MAKE NO WARRANTY OF MERCHANTABILITY OR WARRANTY FOR FITNESS OF USE FOR A PARTICULAR PURPOSE EXPRESS OR IMPLIED WITH RESPECT TO THIS MAP PRODUCT. Independent verification of all data contained on this map product should be obtained by any user of this map.

**MAP SERIES INDEX**

**MAP SHEET B**

North arrow and Lake-Sumter MPO logo.



E:\Data\GIS\MPO\_Traffic\_Counts\Map\_Docs\Draft\LakeTrafficCountsProgram\_LakeCounty\_2013\_Map\_Series\_11x17.mxd

# 2013 LAKE COUNTY ANNUAL TRAFFIC COUNTS MAP SERIES



LAKE COUNTY FLORIDA

**LEGEND**

- Station ID
- Traffic Count Station Location
- County Road
- State Road
- US Highway
- Interstate
- Turnpike
- Active Railroad
- Water Body
- County Delineation

**Incorporated Area**

	Astatula		Leesburg
	Clermont		Mascotte
	Eustis		Minneola
	Fruitland Park		Montverde
	Groveland		Mount Dora
	Howey-In-The-Hills		Tavares
	Lady Lake		Umatilla

**DATA SOURCES:**  
 Planimetrics by Lake County GIS Department.  
 2013 Traffic Counts data collection, compilation and map production by HDR and K&M Data Collection in cooperation with the Lake-Summer MPO.

This map product was prepared from a Geographic Information System established by HDR and the Lake-Summer Metropolitan Planning Organization. Its employees, agents and personnel, make no warranty as to its accuracy, and in particular its accuracy as to labeling, dimensions, contours, property boundaries, or placement or location of any map features thereon. The Lake-Summer Metropolitan Planning Organization and its employees, agents and personnel MAKE NO WARRANTY OF MERCHANTABILITY OR WARRANTY FOR FITNESS OF USE FOR A PARTICULAR PURPOSE EXPRESS OR IMPLIED WITH RESPECT TO THIS MAP PRODUCT. Independent verification of all data contained on this map product should be obtained by any user of this map.

**MAP SERIES INDEX**

**MAP SHEET C**

North arrow and Lake-Summer MPO logo.

MARION COUNTY

SUMTER COUNTY



E:\Data\GIS\MPO\_Traffic\_Counts\Map\_Docs\Draft\LakeTrafficCountsProgram\_LakeCounty\_MapSheet013\_11x17.mxd

# 2013 LAKE COUNTY ANNUAL TRAFFIC COUNTS MAP SERIES



LAKE COUNTY FLORIDA

**LEGEND**

- Station ID (Red circle with number)
- Traffic Count Station Location (Red circle with number)
- County Road (Blue line with number)
- State Road (Yellow line with number)
- US Highway (Red line with number)
- Interstate (Blue and red shield)
- Turnpike (Green shield)
- Active Railroad (Black line with cross-ticks)
- Water Body (Blue area)
- County Delineation (Black outline)

**MAP SHEET COUNTY LINE**

**MAP**

**Incorporated Area**

	Astatula		Leesburg
	Clermont		Mascotte
	Eustis		Minneola
	Fruitland Park		Montverde
	Groveland		Mount Dora
	Howey-In-The-Hills		Tavares
	Lady Lake		Umatilla

**DATA SOURCES:**  
 Planimetrics by Lake County GIS Department.  
 2013 Traffic Counts data collection, compilation and map production by HDR and K&M Data Collection in cooperation with the Lake-Sumter MPO.

This map product was prepared from a Geographic Information System established by HDR and the Lake-Sumter Metropolitan Planning Organization. Its employees, agents and personnel, make no warranty as to its accuracy, and in particular its accuracy as to labeling, dimensions, contours, property boundaries, or placement or location of any map features thereon. The Lake-Sumter Metropolitan Planning Organization and its employees, agents and personnel MAKE NO WARRANTY OF MERCHANTABILITY OR WARRANTY FOR FITNESS FOR USE FOR A PARTICULAR PURPOSE EXPRESS OR IMPLIED WITH RESPECT TO THIS MAP PRODUCT. Independent verification of all data contained on this map product should be obtained by any user of this map.

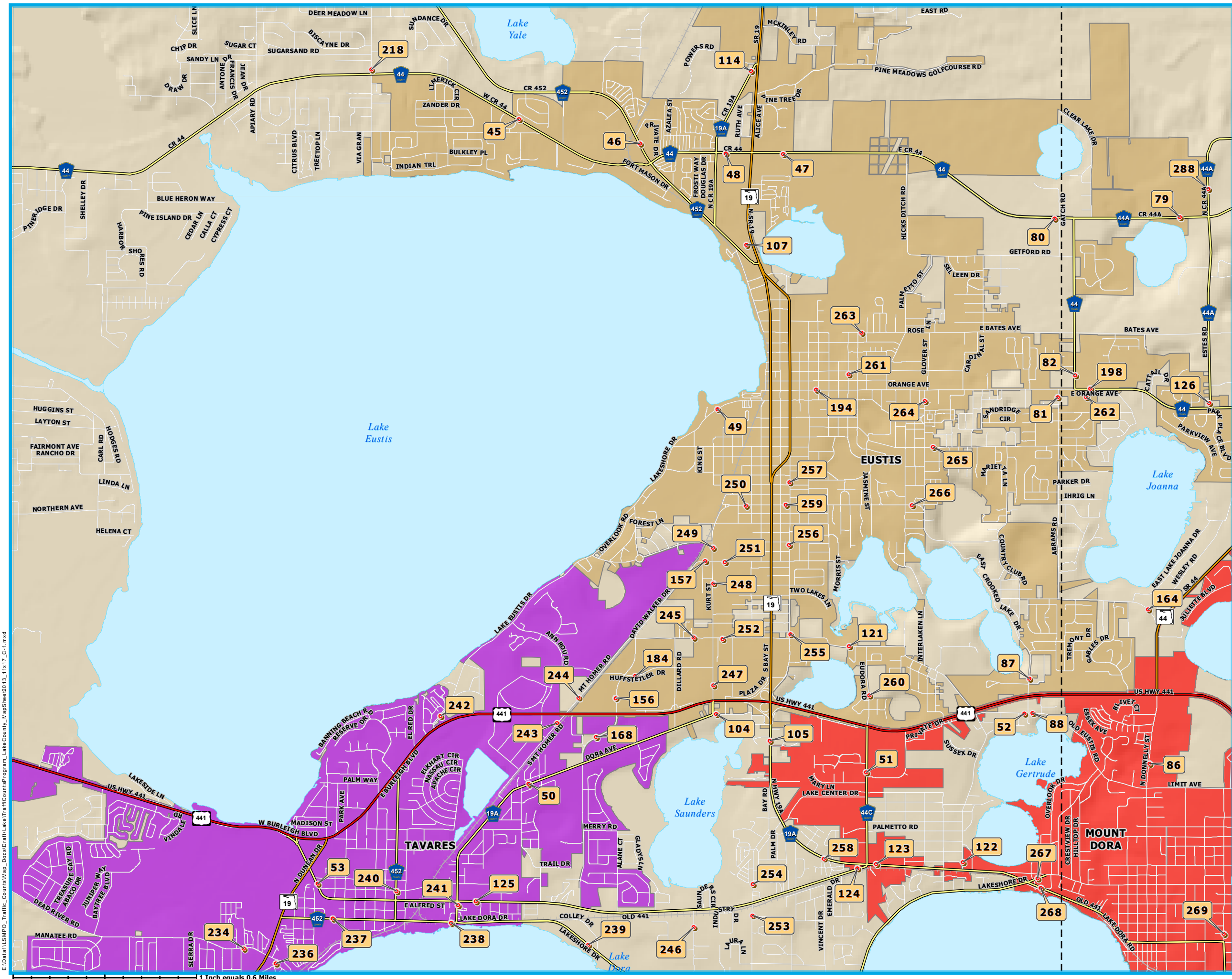
**MAP SERIES INDEX**

**MAP INSET**

**C-1**

1 Inch equals 0.6 Miles

Lake-Sumter mpo Metropolitan Planning Organization



E:\Data\GIS\MPO\_Traffic\_Counts\Map\_Docs\Draft\LakeTrafficCountsProgram\_LakeCounty\_MapSheet2013\_11x17\_C-1.mxd



# 2013 LAKE COUNTY ANNUAL TRAFFIC COUNTS MAP SERIES



LAKE COUNTY FLORIDA

## LEGEND Station ID

- Traffic Count Station Location
- County Road
- State Road
- US Highway
- Interstate
- Turnpike
- Active Railroad
- Water Body
- County Delineation

## Incorporated Area

- |  |                    |  |            |
|--|--------------------|--|------------|
|  | Astatula           |  | Leesburg   |
|  | Clermont           |  | Mascotte   |
|  | Eustis             |  | Minneola   |
|  | Fruitland Park     |  | Montverde  |
|  | Groveland          |  | Mount Dora |
|  | Howey-In-The-Hills |  | Tavares    |
|  | Lady Lake          |  | Umatilla   |

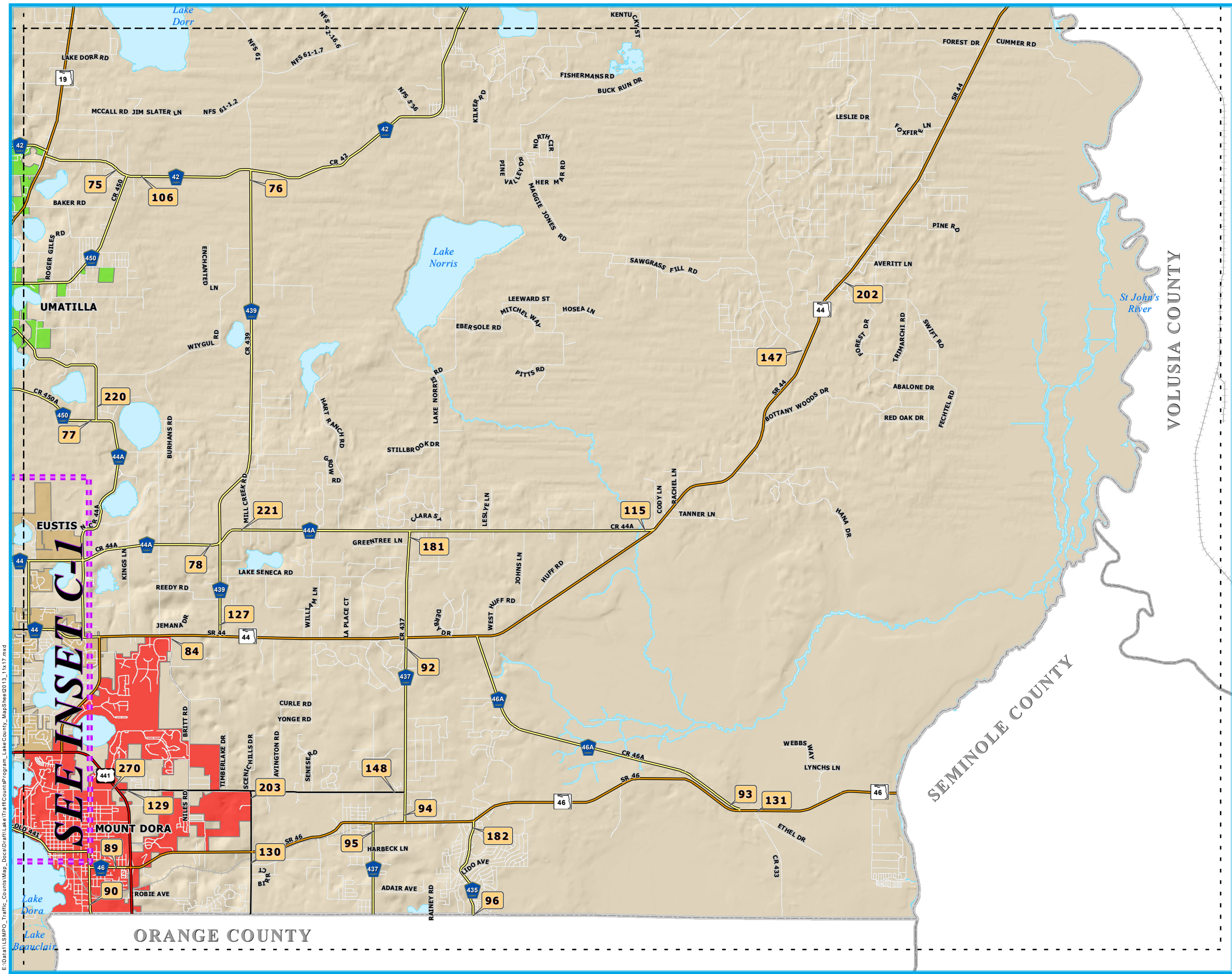
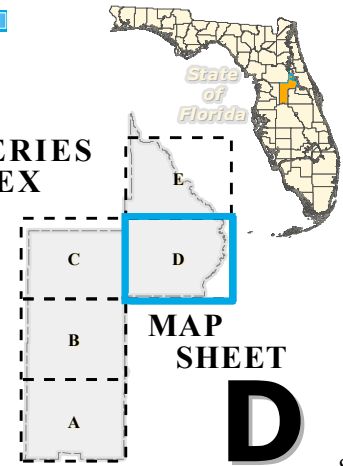
## DATA SOURCES:

Planimetrics by Lake County GIS Department.  
2013 Traffic Counts data collection, compilation and map production by HDR and K&M Data Collection in cooperation with the Lake-Sumter MPO.

This map product was prepared from a Geographic Information System established by HDR and the Lake-Sumter Metropolitan Planning Organization. Its employees, agents and personnel, make no warranty as to its accuracy, and in particular its accuracy as to labeling, dimensions, contours, property boundaries, or placement or location of any map features thereon. The Lake-Sumter Metropolitan Planning Organization and its employees, agents and personnel MAKE NO WARRANTY OF MERCHANTABILITY OR WARRANTY FOR FITNESS OF USE FOR A PARTICULAR PURPOSE EXPRESS OR IMPLIED WITH RESPECT TO THIS MAP PRODUCT. Independent verification of all data contained on this map product should be obtained by any user of this map.



## MAP SERIES INDEX



E:\Data\LSMPO\_Traffic\_Counts\Map\_Docs\Draft\LakeTrafficCountsProgram\_LakeCounty\_MapSheet013\_11x17.mxd

1 Inch equals 1.5 Miles

# 2013 LAKE COUNTY ANNUAL TRAFFIC COUNTS MAP SERIES



LAKE COUNTY FLORIDA

## LEGEND Station ID

- Traffic Count Station Location
- County Road
- State Road
- US Highway
- Interstate
- Turnpike
- Active Railroad
- Water Body
- County Delineation

## Incorporated Area

- |                    |            |
|--------------------|------------|
| Astatula           | Leesburg   |
| Clermont           | Mascotte   |
| Eustis             | Minneola   |
| Fruitland Park     | Montverde  |
| Groveland          | Mount Dora |
| Howey-In-The-Hills | Tavares    |
| Lady Lake          | Umatilla   |

**DATA SOURCES:**  
 Planimetrics by Lake County GIS Department.  
 2013 Traffic Counts data collection, compilation and map production by HDR and K&M Data Collection in cooperation with the Lake-Sumter MPO.

This map product was prepared from a Geographic Information System established by HDR and the Lake-Sumter Metropolitan Planning Organization. Its employees, agents and personnel, make no warranty as to its accuracy, and in particular its accuracy as to labeling, dimensions, contours, property boundaries, or placement or location of any map features thereon. The Lake-Sumter Metropolitan Planning Organization and its employees, agents and personnel MAKE NO WARRANTY OF MERCHANTABILITY OR WARRANTY FOR FITNESS OF USE FOR A PARTICULAR PURPOSE EXPRESS OR IMPLIED WITH RESPECT TO THIS MAP PRODUCT. Independent verification of all data contained on this map product should be obtained by any user of this map.

MAP SERIES INDEX

MAP SHEET **E**

State of Florida



1 Inch equals 1.5 Miles

E:\Data\GIS\MPO\_Traffic\_Counts\Map\_Docs\Draft\TrafficCountsProgram\_LakeCounty\_MapSheet013\_11x17.mxd











MAP STA #	ROAD NAME	LOCATION	Map Sheet	TMS ID	S E C	T W P	R N G						5-YEAR ANNUAL AVERAGE GROWTH RATE PERCENT
								2009	2010	2011	2012	2013	
256	GROVE ST	0.1 Mi N OF GOLFLINKS AV	C-1	428	14	19	26	2,867	3,125	2,978	2,733	2,529	-3.09%
257	GROVE ST	0.1 Mi N OF LAKEVIEW AV	C-1	430	14	19	26	1,144	1,186	1,182	1,248	1,169	0.53%
258	C.R. 19A	0.2 Mi S OF HOLLY DR	C-1	65	26	19	26	7,182	7,796	8,048	7,470	7,871	2.32%
259	LAKEVIEW AV	.12 Mi E OF S.R. 19	C-1	429	14	19	26	4,538	5,684	5,011	4,620	5,293	3.92%
260	EUDORA RD	0.2 Mi N OF U.S. 441	C-1	579	24	19	26	3,359	3,747	3,153	2,730	4,454	7.31%
261	PRESCOTT ST	0.12 Mi N OF E ORANGE AV	C-1	541	11	19	26	456	525	464	445	564	5.47%
262	BATES AV	0.07 Mi E OF C.R. 44	C-1	0	2	19	26	1,322	1,640	1,433	1,223	1,238	-1.62%
263	BATES AV	0.1 Mi E OF PRESCOTT ST	C-1	765	1	19	26	1,283	1,618	1,393	1,314	1,024	-5.48%
264	HASELTON ST	0.17 Mi S OF E ORANGE AV	C-1	432	12	19	26	1,850	1,858	1,778	1,942	1,604	-3.50%
265	WASHINGTON AV	0.1 Mi E OF HASELTON ST	C-1	534	12	19	26	2,496	2,500	2,429	2,597	2,420	-0.77%
266	LAKEVIEW AV	.01 Mi W OF HASELTON ST	C-1	901	13	19	26	3,136	3,103	3,231	3,272	2,984	-1.23%
267	LAKESHORE DR	0.06 Mi N OF OLD 441	C-1	620	30	19	27	642	685	701	593	606	-1.42%
268	OLD 441	0.09 Mi E OF LAKESHORE DR	C-1	58	30	19	27	8,989	9,178	9,038	9,364	8,805	-0.52%
269	HIGHLAND ST	0.04 Mi N OF 5th AV	C-1	434	29	19	27	2,165	1,637	1,849	2,270	2,267	1.16%
270	LIMIT AV	.01 Mi W OF U.S. 441	D	709	20	19	27	1,912	2,068	2,195	2,201	2,035	1.57%
271	C.R. 448A	0.2 Mi S OF C.R. 48	B	757	25	20	26	239	191	171	204	243	0.45%
272	C.R. 448A	0.2 Mi N OF C.R. 48	B	819	24	20	26	3,616	3,859	4,149	3,795	3,933	2.13%
273	TUSCANOOGA RD	.09 Mi N OF S.R. 50	B	104	15	22	24	1,807	2,273	2,191	2,208	2,182	4.83%
274	MASCOTTE EMPIRE RD (S. SU	.32 Mi S OF S.R. 50	B	181	14	22	24	586	571	675	562	912	11.70%
275	C.R. 50/SUNSET AV	0.03 Mi N OF S.R. 50	B	161	14	22	24	931	1,229	989	1,403	1,026	2.45%
276	PALMETTO DR	0.043 Mi W OF C.R. 33	B	106	14	22	24	543	519	490	514	397	-7.51%
277	UNDERPASS RD	0.036 Mi E OF C.R. 33	B	107	14	22	24	791	645	717	729	831	1.25%
278	EAST AV	0.1 Mi N OF S.R. 50	A	834	19	22	26	4,964	5,294	5,540	5,043	5,606	3.09%
279	MAIN ST	0.1 Mi N OF WASHINGTON ST	B	771	18	22	26	1,746	1,773	1,907	1,831	1,981	3.20%
280	CITRUS TOWER BV	0.1 Mi S OF S.R. 50	A	146	28	22	26	9,700	12,828	13,786	11,986	13,799	9.21%
281	HOOKS ST	0.12 W. OF CITRUS TOWER BV	A	482	29	22	26	2,176	3,000	4,047	3,813	6,588	31.91%
282	EXCALIBUR RD	0.08 Mi S OF HOOKS ST	A	892	28	22	26	3,891	4,175	4,084	3,673	3,561	-2.19%
283	CITRUS TOWER BV	0.18 E. OF US 27	A	910	5	23	26	10,621	9,760	10,825	10,040	12,376	3.90%
284	HAMMOCK RIDGE RD	0.21 W. OF US 27	A	897	5	23	26	8,864	9,614	9,880	9,982	13,124	10.31%
285	LAKESHORE DR (CLERMONT)	0.14 E. OF HAMMOCK RIDGE ROAD	A	900	6	23	26	5,559	6,068	6,594	6,519	9,398	14.03%
286	FOSGATE RD	0.19 Mi W OF GRASSY LAKE RD	B	895	8	22	26	1,038	1,161	1,052	1,424	1,571	10.92%
287	STEVES RD	0.44 Mi W. OF CITRUS TOWER BV	A	886	29	22	26	***	4,088	4,545	4,863	5,529	N/A
288	CR 44A	0.17 MI N. OF CR 44A	C-1	823	5	19	27	***	1,672	1,604	1,632	1,661	N/A
289	HOOKS ST	E. OF US 27	A	481	29	22	26	***	****	3,385	4,022	5,227	N/A
290	GRAND HIGHWAY	N. OF HOOKS ST	A	0	29	22	26	***	****	3,345	3,982	8,585	N/A
291	CR 48	AT SUMTER COUNTY LINE	B	225	7	21	24	***	****	*****	2,043	2,003	N/A

ADJUSTED PEAK HR VOLUME 2013	BEGIN PEAK HOUR 2013	ADJUSTED P.M. PEAK HOUR VOLUME (3-7 pm reported as 15:00-19:00) 2013				
		Total	NB/EB	SB/WB	Pk Dir	Time
232	16:30	232	166	66	NB	16:30
114	16:15	114	16	98	NB	16:15
651	12:15	618	318	301	SB	15:15
521	16:30	521	289	233	EB	16:30
420	15:00	420	221	199	NB	15:00
53	13:15	51	20	31	SB	16:00
261	8:00	172	62	110	WB	15:00
105	14:30	99	41	58	EB	15:00
172	12:00	144	72	72	NB	15:00
237	16:45	237	96	142	EB	16:45
346	16:30	346	210	136	EB	16:30
66	15:15	66	33	34	SB	15:15
735	16:30	735	353	382	WB	16:30
311	6:45	221	124	97	NB	16:30
210	7:30	196	91	104	EB	16:15
26	12:00	24	14	10	NB	17:00
409	6:45	394	172	222	SB	17:00
197	16:00	197	117	80	NB	16:00
94	18:15	94	44	49	SB	18:15
99	16:00	99	58	41	SB	16:00
37	16:30	37	21	16	WB	16:30
90	17:00	90	52	38	EB	17:00
593	7:30	512	234	279	SB	15:30
188	16:15	188	109	79	SB	16:15
1,102	17:15	1,102	501	601	SB	17:15
624	17:00	624	291	333	WB	17:00
610	6:45	365	167	199	NB	15:30
1,172	7:30	986	411	575	WB	17:00
1,220	7:30	1,190	562	628	WB	17:15
917	17:15	917	328	589	WB	17:15
253	6:45	175	97	79	WB	16:45
572	14:30	467	256	210	WB	16:15
168	16:45	168	105	63	NB	16:45
511	17:15	511	177	334	WB	17:15
731	17:00	731	366	365	NB	17:00
166	13:45	165	120	46	WB	17:00

- NOTES: 1 \*\*\* - Data not available in 2009  
2 \*\*\*\* - Data not available in 2010  
3 ??? - N/A due to lack of previous years data  
4 U/C Denotes station under construction during data collection period.  
5 5-Year Annual Average Percentage Growth Rate is computed as follows:  
"5-Year Annual Average Percentage Growth Rate = (1+( 2013 AADT - 2009 AADT)/(2009 AADT))^(1/4)-1"  
6 Stations Deleted from the program:

# 83  
# 85  
# 154