

2012 Lake County Annual Traffic Counts



LAKE COUNTY

F L O R I D A

Lake County Public Works
Engineering Division
437 Ardice Avenue
Eustis, Florida 32726

2012 Lake County Traffic Counts for County Roads



Lake County Public Works Building



Typical view of Lake County Annual Traffic Count Station setup

*Lake County Public Works
Engineering Division
437 Ardice Avenue
Eustis, Florida 32726
Phone (352) 483-9093 or (352) 483-9000*

Introduction

Lake County Public Works Engineering Division is pleased to provide to all the Local Governments and Interested Others, the 2012 Annual Daily Traffic Counts for all of the Lake County maintained major roads. The 2012 Annual Daily Traffic Count Program is one of the responsibilities of the Lake County Public Works Engineering Division.

The Lake County Public Works Traffic Count Program is the enumeration of vehicular volumes taken at all 289 count stations on roads within the County. Count reports produced by this program reflect daily and hourly volumes. Traffic counts are used by planners and engineers as a basic scale of comparison indicating the relative importance of various links in a road system. The traffic counts are also used to determine the Operating Level of Service on a given section of roadway.

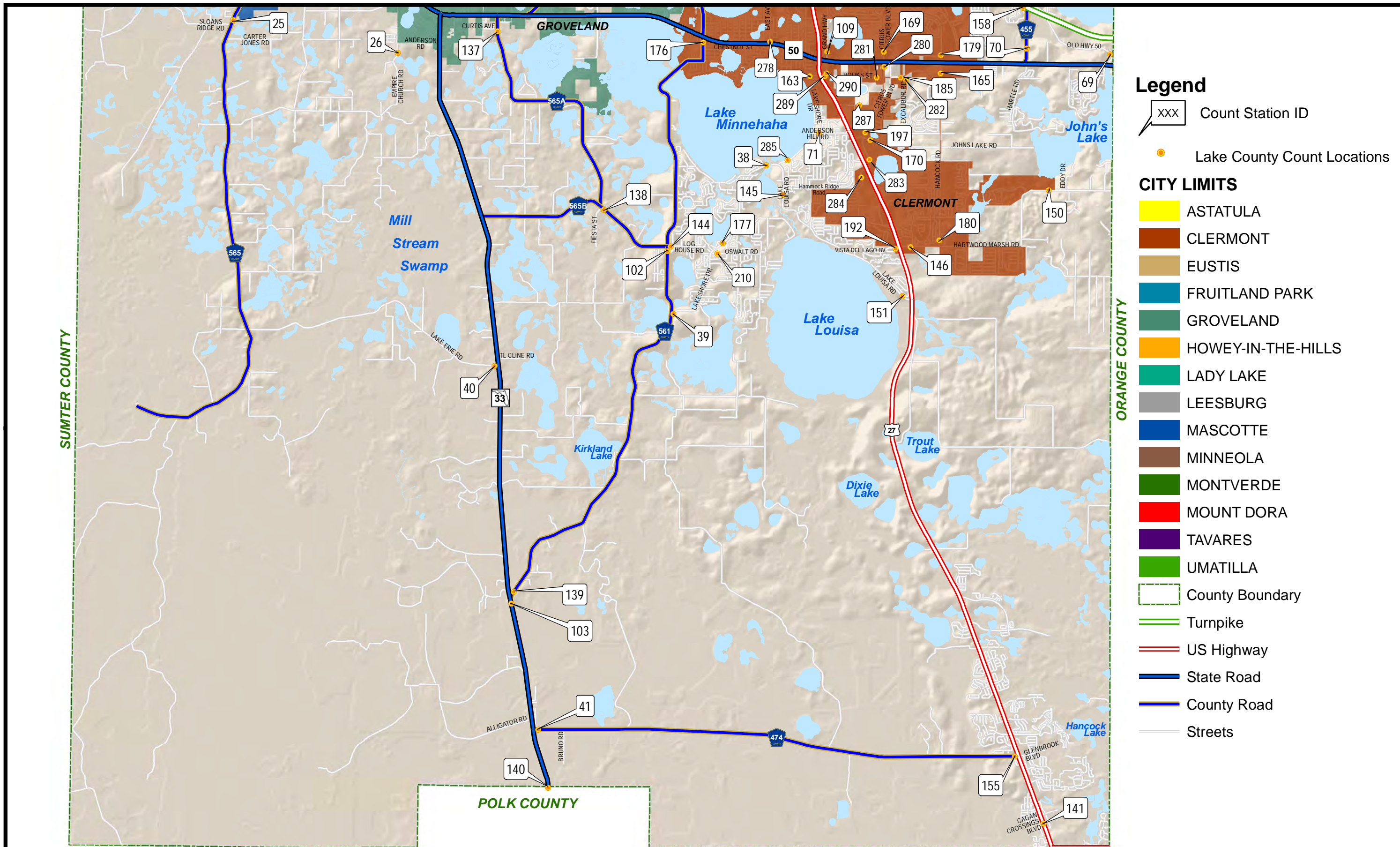
The next series of pages are Traffic Count Station Location Maps and Traffic Tables. Every effort has been made to make the 2012 Annual Daily Traffic Counts Book as accurate as possible. Any errors or omissions should be brought to the attention of the Lake County Public Works staff.

The 2012 Annual Traffic Count Book is a public document. Copies will be made available for public inspection at Lake County Public Works Departments offices, 437 Ardice Avenue, Eustis, Florida. The 2012 Traffic Count Book will be provided to interested parties on request. Cost for reproduction may be charged, in accordance with Lake County policies.

Lake County Public Works wishes to acknowledge the Lake-Sumter Metropolitan Planning Organization for their contributions to the 2012 Lake County Traffic Count Program.

The 2012 Annual Lake County Traffic Counts booklet is available for download free on our website:

http://www.lakecountyfl.gov/departments/public_works/engineering/traffic_count.aspx



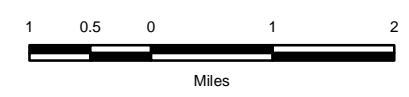
Legend

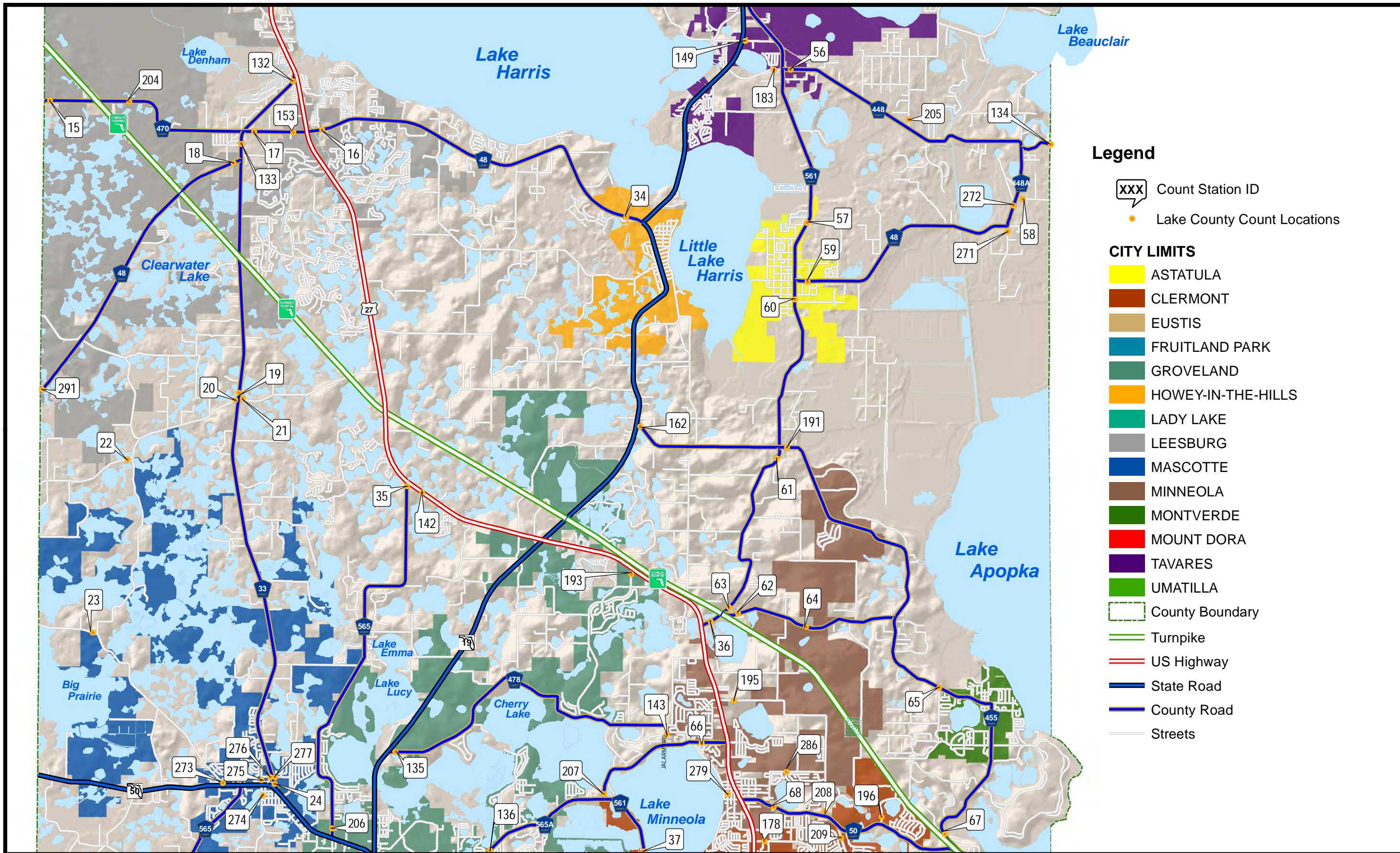
- xxx Count Station ID
- Lake County Count Locations

CITY LIMITS

- ASTATULA
- CLERMONT
- EUSTIS
- FRUITLAND PARK
- GROVELAND
- HOWEY-IN-THE-HILLS
- LADY LAKE
- LEESBURG
- MASCOTTE
- MINNEOLA
- MONTVERDE
- MOUNT DORA
- TAVARES
- UMATILLA

- County Boundary
- Turnpike
- US Highway
- State Road
- County Road
- Streets



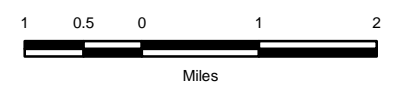


Legend

- xxx Count Station ID
- Lake County Count Locations

CITY LIMITS

- ASTATULA
- CLERMONT
- EUSTIS
- FRUITLAND PARK
- GROVELAND
- HOWEY-IN-THE-HILLS
- LADY LAKE
- LEESBURG
- MASCOTTE
- MINNEOLA
- MONTVERDE
- MOUNT DORA
- TAVARES
- UMATILLA
- County Boundary
- Turnpike
- US Highway
- State Road
- County Road
- Streets



2012 Lake County Annual Traffic Counts
INSET B

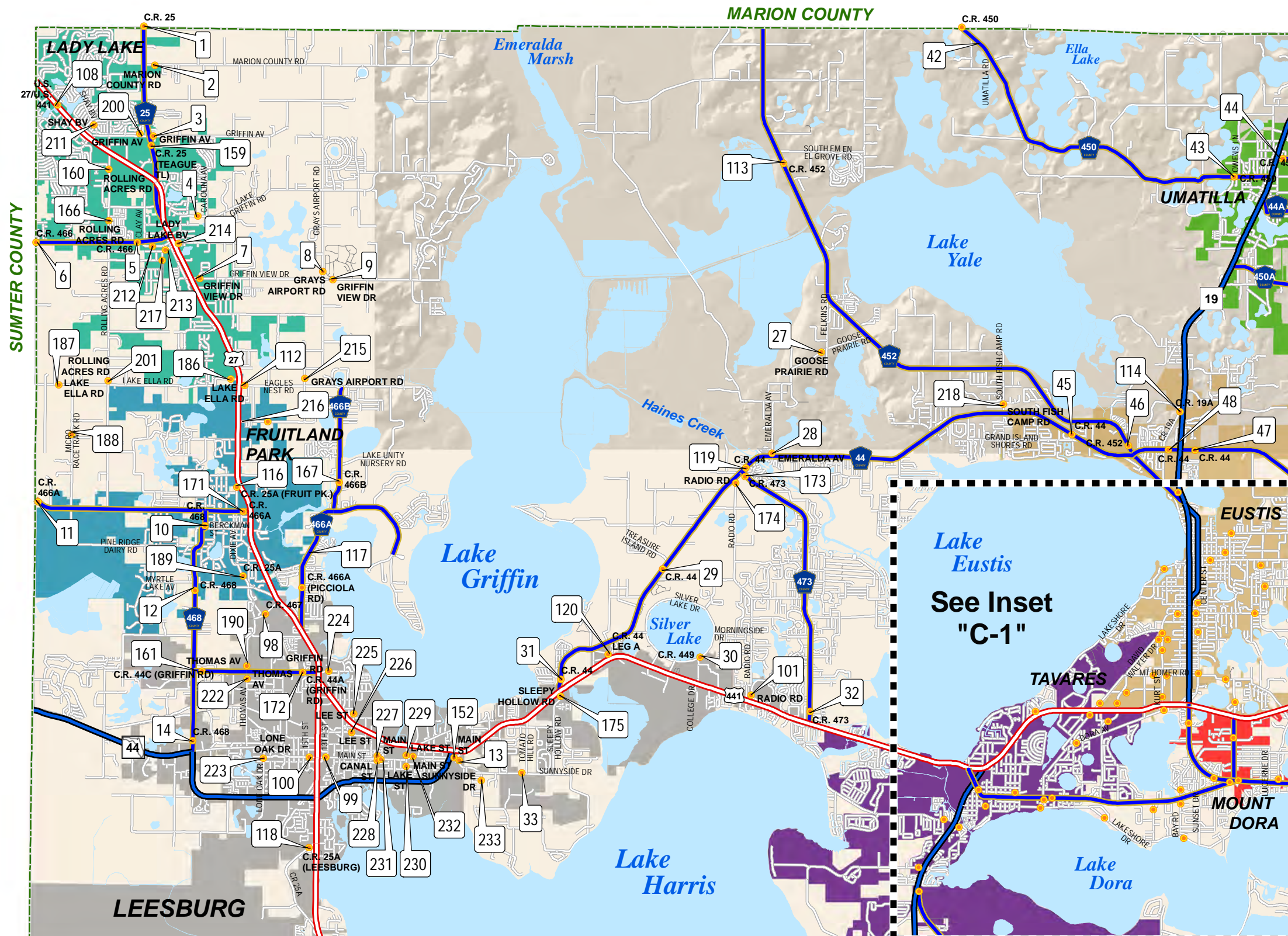
Legend

- xxx Count Station ID
- Lake County Count Locations

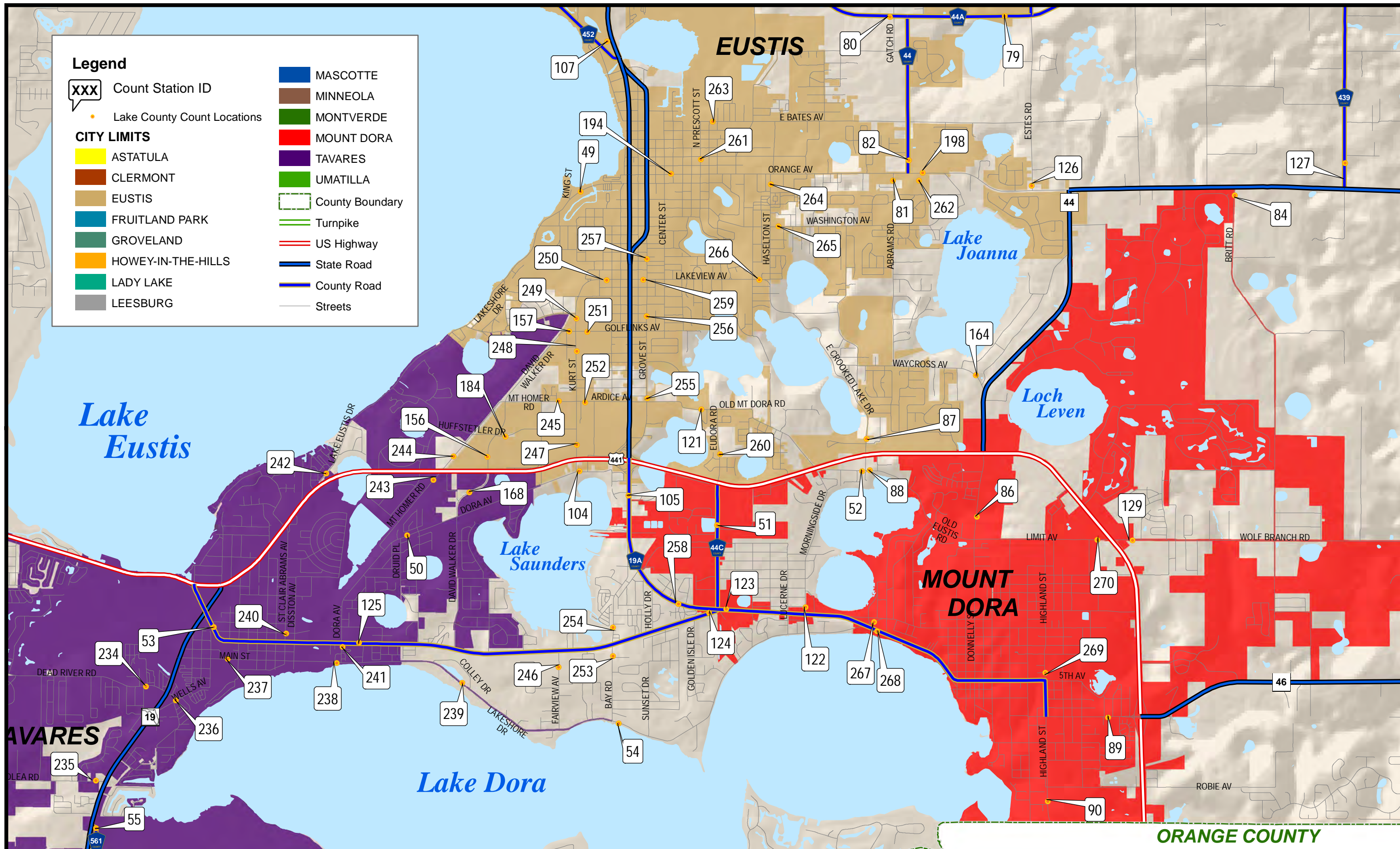
CITY LIMITS

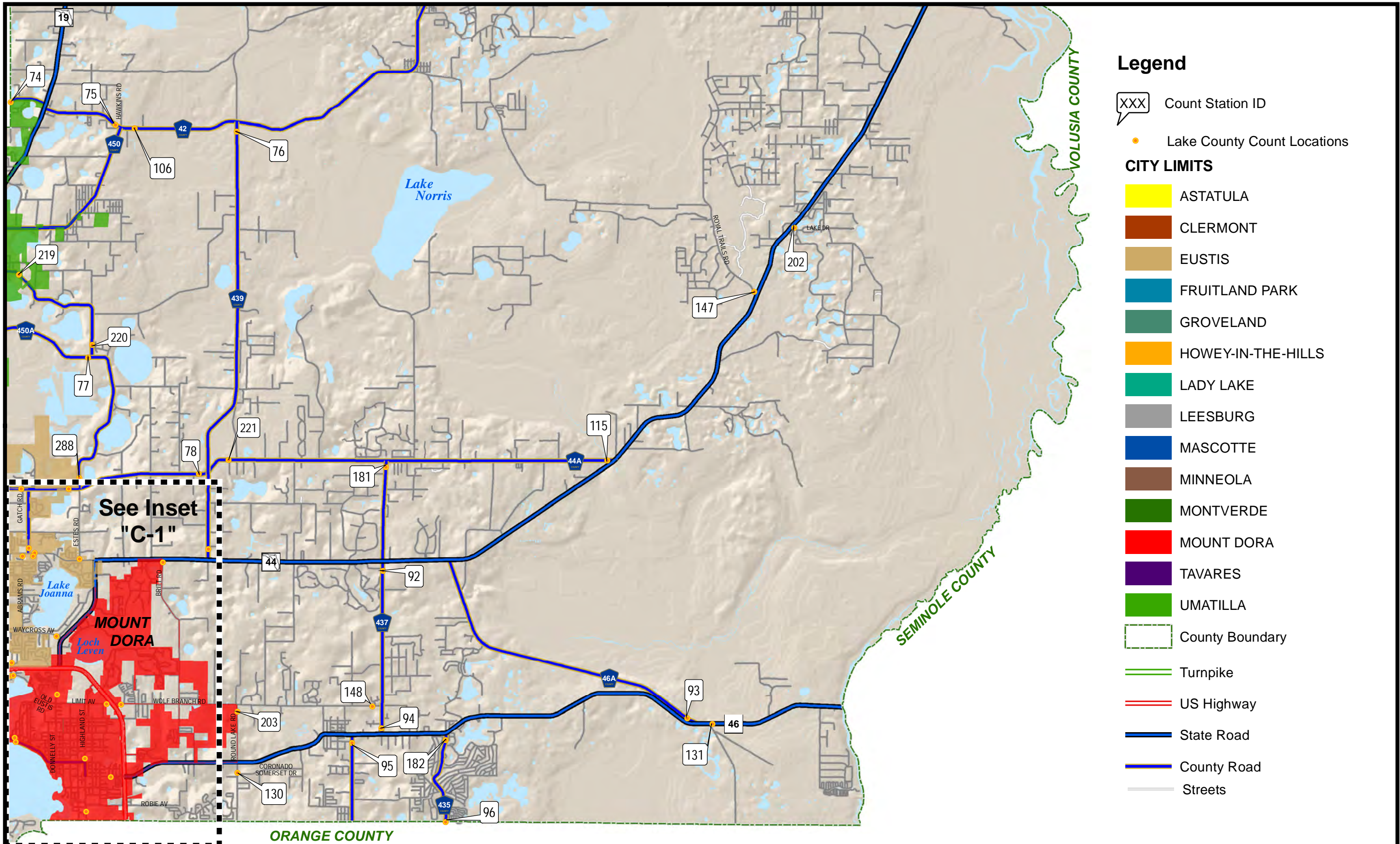
- ASTATULA
- CLERMONT
- EUSTIS
- FRUITLAND PARK
- GROVELAND
- HOWEY-IN-THE-HILLS
- LADY LAKE
- LEESBURG
- MASCOTTE
- MINNEOLA
- MONTVERDE
- MOUNT DORA
- TAVARES
- UMATILLA

- County Boundary
- Turnpike
- US Highway
- State Road
- County Road
- Streets

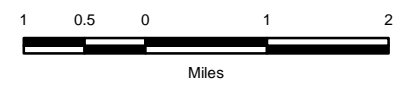


2012 Lake County Annual Traffic Counts
INSET C



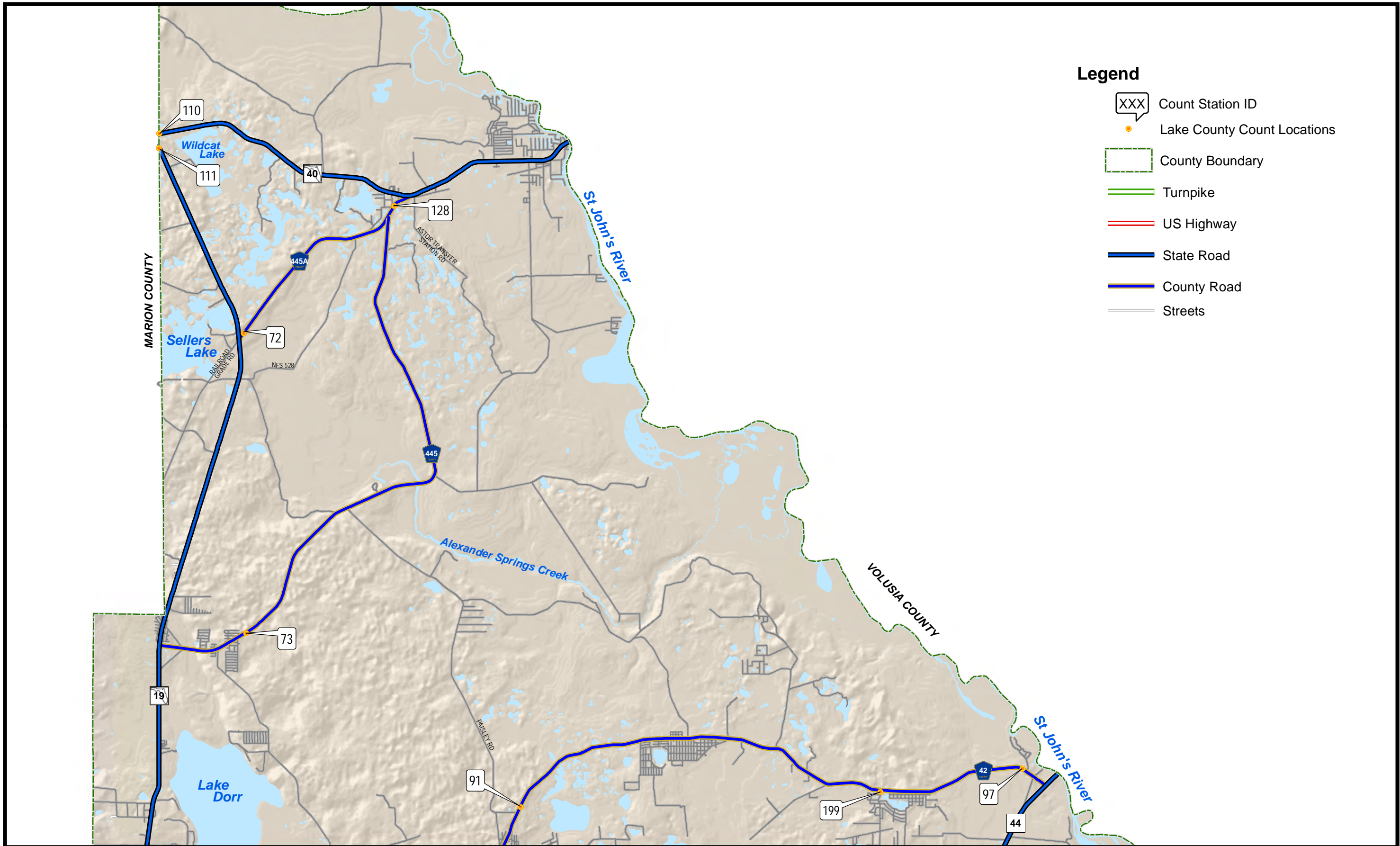


- ### Legend
- XXX Count Station ID
 - Lake County Count Locations
- #### CITY LIMITS
- ASTATULA
 - CLERMONT
 - EUSTIS
 - FRUITLAND PARK
 - GROVELAND
 - HOWEY-IN-THE-HILLS
 - LADY LAKE
 - LEESBURG
 - MASCOTTE
 - MINNEOLA
 - MONTVERDE
 - MOUNT DORA
 - TAVARES
 - UMATILLA
- County Boundary
 - Turnpike
 - US Highway
 - State Road
 - County Road
 - Streets



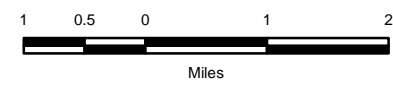
2012 Lake County Annual Traffic Counts

INSET D



Legend

- XXX Count Station ID
- Lake County Count Locations
- County Boundary
- Turnpike
- US Highway
- State Road
- County Road
- Streets



2012 Lake County Annual Traffic Counts

INSET E

Main data table with columns: MAP STA #, ROAD NAME, LOCATION, S E C, T W P, R N G, ANNUAL ADJUSTED DAILY TRAFFIC (AADT) (1997-2012), 5-YEAR ANNUAL AVERAGE GROWTH RATE PERCENT.

ADJUSTED P.M. PEAK HOUR VOL. (3-7 pm) 2012. Columns: ADJUSTED PEAK HR VOLUME 2012, BEGIN PEAK HOUR 2012, Total, NB/EB, SB/WB, Pk Dir, Time.

MAP STA #	ROAD NAME	LOCATION	S E C	T W P	R N G	ANNUAL ADJUSTED DAILY TRAFFIC (AADT)															5-YEAR ANNUAL AVERAGE GROWTH RATE PERCENT		
						1997	1998	1999	2000	2001	2002	2003	2004	2005	2006	2007	2008	2009	2010	2011		2012	
						277	UNDERPASS RD	0.036 Mi E OF C.R. 33	14	22	24	*	*	*	*	*	*	*	*	*		*	839
278	EAST AV	0.1 Mi N OF S.R. 50	19	22	26	*	*	*	*	*	*	*	*	*	*	5,703	5,517	4,964	5,294	5,540	5,043	-2.22%	
279	MAIN ST	0.1 Mi N OF WASHINGTON ST	18	22	26	*	*	*	*	*	*	*	*	*	*	1,341	1,587	1,746	1,773	1,907	1,831	3.64%	
280	CITRUS TOWER BV	0.1 Mi S OF S.R. 50	28	22	26	*	*	*	*	*	*	*	*	*	*	*	10,309	9,700	12,828	13,786	11,986	3.84%	
281	HOOKS ST	0.12 W. OF CITURS TOWER BV	29	22	26	*	*	*	*	*	*	*	*	*	*	*	1,257	2,176	3,000	4,047	3,813	31.97%	
282	EXCALIBUR RD	0.08 Mi S OF HOOKS ST	28	22	26	*	*	*	*	*	*	*	*	*	*	*	1,644	3,891	4,175	4,084	3,673	22.26%	
283	CITRUS TOWER BV	0.18 E. OF US 27	5	23	26	*	*	*	*	*	*	*	*	*	*	*	7,970	10,621	9,760	10,825	10,040	5.94%	
284	HAMMOCK RIDGE RD	0.21 W. OF US 27	5	23	26	*	*	*	*	*	*	*	*	*	*	*	6,848	8,864	9,614	9,880	9,982	9.88%	
285	LAKESHORE DR (CLERMONT)	0.14 E. OF HAMMOCK RIDGE ROAD	6	23	26	*	*	*	*	*	*	*	*	*	*	*	6,115	5,559	6,068	6,594	6,519	1.61%	
286	FOSGATE RD	0.19 Mi W OF GRASSY LAKE RD	8	22	26	*	*	*	*	*	*	*	*	*	*	**	1,038	1,161	1,052	1,424		N/A	
287	STEVES RD	0.44 Mi W. OF CITRUS TOWER BV	29	22	26	*	*	*	*	*	*	*	*	*	*	**	***	4,088	4,545	4,863			N/A
288	CR 44A	0.17 MI N. OF CR 44A	5	19	27	*	*	*	*	*	*	*	*	*	*	**	***	1,672	1,604	1,632			N/A
289	HOOKS ST	E. OF US 27	29	22	26	*	*	*	*	*	*	*	*	*	*	**	***	****	3,385	4,022			N/A
290	GRAND HIGHWAY	N. OF HOOKS ST	29	22	26	*	*	*	*	*	*	*	*	*	*	**	***	****	3,345	3,982			N/A
291	CR 48	AT SUMTER COUNTY LINE	7	21	24	*	*	*	*	*	*	*	*	*	*	**	***	****	*****	2,043			N/A

- NOTES: 1 * - Data not available in 2007
2 ** - Data not available in 2008
3 *** - Data not available in 2009
4 **** - Data not available in 2010
5 ??? - N/A due to lack of previous years data
6 U/C Denotes station under construction during data collection period.
7 5 -Year Annual Average Percentage Growth Rate is computed as follows:
"5-Year Annual Average Percentage Growth Rate = (1+(2011 AADT - 2007 AADT)/(2007 AADT))^(1/4)-1"
8 Stations Deleted from the program:

83
85
154

ADJUSTED PEAK HR VOLUME 2012	BEGIN PEAK HOUR 2012	ADJUSTED P.M. PEAK HOUR VOL. (3-7 pm) 2012				
		Total	NB/EB	SB/WB	Pk Dir	Time
74	16:45	74	47	27	EB	16:45
518	7:45	457	217	240	SB	13:15
174	16:15	174	67	107	SB	16:15
974	16:45	974	452	522	SB	16:45
361	13:00	361	188	173	EB	13:00
624	6:45	412	310	102	NB	13:15
835	7:30	798	321	477	WB	17:30
868	17:30	868	352	516	WB	17:30
597	16:45	597	248	349	WB	16:45
196	6:45	178	79	99	WB	14:30
480	12:45	480	216	264	WB	12:45
171	17:00	171	113	58	NB	17:00
318	14:45	318	170	148	EB	14:45
324	17:00	324	178	147	NB	17:00
171	16:45	171	74	114	WB	16:45