

NOVEMBER 2015

Contact: Vickie.Wyche@dot.state.fl.us

(386) 943-5185

LAKE COUNTY
CONSTRUCTION IN PROGRESS

238275-6-52-01

SR 429 (Wekiva Pkwy) from Orange County Line to West of Old McDonald Road (Section 4B), 2.447 miles. Design Build new limited access toll road. No lane closures anticipated.

Estimate completion date: Spring 2016

Project cost: \$28.200 million

LANE CLOSURES: No Lane closures anticipated

435434-1-52-01

SR 25 and SR 50 Interchange – Landscaping in Lake County

Estimate completion date: August 2017 - 18% complete

Project cost: \$243,390

LANE CLOSURES: No Lane closures anticipated

430652-1-52-01

SR 50 from SR 33/Crittenden Street (Groveland) to approx. 1000' west of 12 St. (Clermont) – Resurfacing and minor drainage improvements.

Estimate completion date: April 2016 - 42% complete

Project cost: \$4,888,000

LANE CLOSURES: November 2nd thru 7th from 7:00am to 7:00 pm

Intermittent EB and WB inside lanes closed. For earthwork and installing concrete

November 9th thru 14th – 7:00 am to 7:00 pm

Intermittent EB and WB closures from Clermont to Groveland.

NOVEMBER 2015

Contact: Vickie.Wyche@dot.state.fl.us

(386) 943-5185

LAKE COUNTY
Other Projects Pending

1. **SR 500 (US 441) from Lake Ella Road to Avenida Central** - Reconstruction project to 6-lane US 441 from Lake Ella Road to Avenida Central (FM 238395-5). Right-of-Way funded estimate \$22.3 million. Construction funded FY 2019 estimate \$33 million. Perkins Street to SR 44 (FM238394-3) Right-of-Way Acquisition estimate \$25 million.
2. **SR 500 (US 441) from SR 44 to S. of SR 46** - Design FY 2014/16 and Right-of-Way FY 2019/20. (FM 429356-1)
3. **SR 25 (US 27) from N. of Boggy Marsh Rd., to N. of Lake Louisa Rd.** - Six-laning 6.5 miles from Boggy Marsh Road to Lake Louisa Road (FM No. 238422-1). Design has been completed and right of way acquired. Construction funded FY 2016.
4. **SR 44 (CR 44B) from SR 500 (US 441) to SR 44** - Design for four-laning the two miles from US 441 to SR 44 is in progress (FM No. 409870-1). Right of way FY 2014/16. Construction not yet funded.
5. **SR 19 from CR 48 to CR 561** - An environmental study (PD&E) into possible widening along the 4.7 miles from CR 48 to CR 561 (FM No. 238319-1). Design estimate \$2.9 million in FY 2014/16. Construction not funded
6. **CR 466A (Miller St.) Lake-Sumter County Line US 27** - A \$8.7 million TRIP grant to Lake County Right-of-Way funds in FY 2014 (FM 430253-1). Construction on Segment (2). JPA with Lake County
7. **CR 466A (Miller St.) from US 27 to Sunny Court** – A \$5.0 million grant for construction from US 27 to Sunny Court (FM No. 430253-2) in FY 2015. JPA with Lake County.
8. **CR 466A (Miller Street) Phase 3 from Cut-off Road to Sunny Court** - \$2.5 million grant for Right-of-Way in Fiscal Year 2016 (FM 430253-3).

NOVEMBER 2015

Contact: Vickie.Wyche@dot.state.fl.us

(386) 943-5185

**SUMTER COUNTY
CONSTRUCTION IN PROGRESS**

242626-2-52-01: I-75 Improvements from North of Hernando County Line to South of CR 470.

Widen I-75 from four (4) lanes to six (6) lanes, complete interchange construct at State Road 48 (Exit 314) new ramps at the CR 476B/CR 673 (Exit 309 Interchange) Intelligent Transportation Systems (ITS) improvements. Drainage, guardrail, signing and pavement markings, signalization, milling and resurfacing, and miscellaneous structures.

Estimated completion date: March 2017 - 46% complete

Project cost: \$76.9 million

LANE CLOSURES: - November 12th and 13th – from 8:00pm to 7:00am

NB inside lane closures from .5 miles north of Forestry Blvd., to .05 miles north of Exit 309 (CR 476B) and NB outside lanes from .5 miles South of Gum Slough to 1 mile South of CR 473 Overpass.

Relocating temporary barrier wall.

242626-3-52-01

I-75 Improvements from CR 470 to SR 91 (FL Turnpike) in Sumter County

Widening of 4-lane divided Highway to 6-lane divided Highway

Estimated completion date: August 2017 - 2% complete

Project cost: \$43.1 million

LANE CLOSURES: No Lane Closures anticipated

430653-1-52-01

SR 471 from the Polk County Line to 1.83 miles S. of Unnamed Canal

Mill and Resurfacing: placing slit fence for erosion control

Estimated completion date: November 2015 – 77% complete

Project cost: \$2.084 million

LANE CLOSURES: November 2nd to 7th

Intermittent northbound and southbound lane closures, starting from 7 a.m. to 7 p.m. For paving.

Monday, November 9th to 10th

Intermittent northbound and southbound lanes closures from the Polk County Line and north 5 miles, from 7 a.m. to 7 p.m. There will be flaggers on site.

Thursday, November 12th to 14th

Intermittent northbound and southbound lane closures from the Polk County line and north 5 miles, starting at 7 a.m. to 7 p.m. There will be flaggers on site.

NOVEMBER 2015

Contact: Vickie.Wyche@dot.state.fl.us

(386) 943-5185

Other Projects Pending

1. **SR 48 from E. of I-75 Ramps to CR 475 (Main St.)** - Widening to four lanes along the 1.6 miles from E. of I-75 to Main Street (CR 475) (FM No. 240418-2). Construction funded in FY 2016.
2. **US 301 at /SR 44 Intersection** – Add a second SB Left Turn Lane on SR 35 and intersection improvements (FM 430188-1). This is a privately funded project. Estimates cost \$130,000. Construction FY 2016
3. **SR 35 (US 301) from CR 470 to SR 44** - Widening from two to four lanes Design Phase FY 2017/18 (FM No. 430132-1).
4. **I-75 at CR 514 from 0.5 miles W. of I-75 to US 301** – Environmental study (PD&E) FY 2017. (FM435476-1)
5. **CR 466W from CR 209 to US 301** – A \$1.6 million grant to Sumter County in FY 2015 for resurfacing existing pavement (Super Pave), remark Pavement and Sod. JPA with Sumter County (FM No. 428443-1).
6. **CR 475 from C-470 to CR 542** - A \$3.26 million grant to Sumter County in FY 2015/16 for construction of paved shoulders and resurfacing along the 3.7 miles from CR 470 to CR 542, including replacement of the timber column bridge at Jumper Creek with concrete box culverts (FM No. 429944-1). JAP with Sumter County
7. **CR 673** – A \$2.032 million construction grant (FY 2017/18) to Sumter County to widen lanes, pave shoulders and resurfacing from .8 miles west of US 301 to I-75. (FM 433670-1). JPA with Sumter County.

PUBLIC WORKS DIVISION

**PROJECT SUMMARY
October 27, 2015**

SUMTER COUNTY ROADWAY PROJECTS UPDATE

ROADS		SCOPE	*PHASE	PROJECT BUDGET (THROUGH FY2016)
1	C-462 Widening	This roadway widening project includes reconstruction of approximately 2.3 miles of roadway from US 301 to C-466A, within the City limits of Wildwood. The final roadway configuration will include one travel lane in each direction, a bi-directional center turn lane, and a bike lane and sidewalk on both sides of the roadway. Utility relocation has been delayed, and is now expected to be completed in December 2015. Roadway construction will begin after utility relocation. The expected start date for roadway work is 1/15/16. Project completion is expected within 12 months of the start of roadway construction.	C	\$5,333,000
2	C-466W Widening	This roadway widening project includes reconstruction of approximately one mile of roadway from CR 209 to US 301 within the City limits of Wildwood. The final roadway configuration will include one travel lane in each direction, bi-directional center turn lane, and a bike lane and sidewalk on both sides of the roadway. Final design plans were received on 8/7/15. Rights-of-way acquisition is nearly complete. Construction is expected to occur in 2017.	ROW	\$967,742
3	C-476 W	The purpose of this project is to replace the existing edge and centerline striping with rumble striping for a 9.1± mile section of C-476 W from the Hernando County Line to US 301. Final design plans were submitted on 6/26/15. An agreement with FDOT for construction funding is being prepared. Construction is expected to begin in early 2016.	WC	\$250,000
4	C-468 Widening, from US 301 to CR 505	This roadway widening project includes reconstruction of approximately 1.7 miles of roadway from US 301 to CR 505. The final roadway configuration will include a four-lane divided urban typical section with sidewalks and bicycle lanes. The project is being coordinated in close fashion with the Wildwood Springs DRI's site planning process. The design is 90% complete, and expected to be completed in October 2015. A construction timetable has not yet been determined.	D	\$180,893
5	C-468 second bridge over the Florida Turnpike and widening from CR 505 to east of the Turnpike	This project involves the construction of a second bridge over Florida's Turnpike at C-468 and the widening, to four lanes, of C-468 between CR 505 to east of the Turnpike. Construction of bridge support structures is underway. Pile driving is completed, and the roadway widening is nearly complete. Completion of all project construction is scheduled for June 2016.	C	\$3,500,000
6	Partial construction of the Half and Full Interchange at C-468 and the Florida Turnpike	The construction of the interchange and lighting portions of this project are on hold, pending release of construction by the Florida Turnpike. The portions of the project currently under construction are the stormwater detention ponds, the Intelligent Transportation System (ITS), and the interchange ramp turnouts; this work is scheduled to be completed by April 2016.	C	\$3,504,530
7	CR 501 Preliminary Engineering Study	A Preliminary Engineering Study (PES) is being conducted for CR 501 from C-468 E to C-470 E. There was a public meeting regarding the study on 6/3/2015. A presentation was made to the MPO Technical Advisory Committee and the Citizen Advisory Committee on 8/12/15, and to the MPO Governing Board on 8/26/15. The draft PES report was received on 8/21/15. A public hearing is scheduled for 10/27/15. Concept design is expected to be completed in December 2015, and will be presented to the BOCC for approval in late December. A schedule and funding source for design and construction is grant dependent.	PL	\$84,750
8	C-475 from C-470 E to CR 542	Project involves milling and resurfacing of C-475S from C-470 to CR 542. Scope also includes adding 4' paved shoulders and replacing the bridge over Jumper Creek.	PL	\$400,000
9	C-470, C-475N, and C-575 Safety Improvements	An RFQ is being developed for the design of safety improvements to C-470 between CR 424 and Wilderness Drive (0.6 miles); C-475N between SR 44 and the Marion County line (6.3 miles); and C-575 between C-476W and C-48W (along 0.8 miles of curves). These safety improvements include adding paved shoulders, installing raised pavement markers, installing edge line rumble strips, and other related safety improvements. Design is scheduled to occur in FY 2016, and construction is scheduled to occur in FY 2018. This project is funded with FDOT Local Agency Program (LAP) funds.	PL	\$200,000
10	C-478 from US 301 to SR 471	This 5.5 miles of roadway is scheduled to be resurfaced in FY 2016.	PL	\$750,000
11	CR 101 Improvements	To accommodate increased traffic volume, this project consists of matching the current curb and gutter section of roadway from the Villages of Parkwood to CR 104 (2640'); then transitioning to a typical rural section ending 3200' north of CR 104. Design is expected to occur in FY 2016, with construction scheduled for FY 2017.	PL	\$60,000
12	South Buena Vista Boulevard	This roadway will be milled and resurfaced from the North Odell Circle/Bailey Trail roundabout to the South Odell Circle roundabout (9000'). This work is scheduled to occur in FY 2016.	PL	\$750,000
FUTURE PROJECTS				
1	CR 673 from CR 674 west to I-75	This 3.5 miles of roadway will be reconstructed. This work is scheduled to occur in FY 2017.	FY 17	\$2,032,000
2	C-48W Safety Improvements	C-48W from the Citrus County Line to CR 616 is a roadway safety upgrade project (adding 5' paved shoulders, audible edge line, and guardrail at the curves) approximately 7.5 miles in length. A public meeting was held on 4/16/2015 to discuss the 60% plans. 100% design plans were submitted to the County on 5/29/15. Construction is expected to begin in 2017, when FDOT grant funds are programmed.	WC	\$450,000
3	C-472 @ US 301 Intersection	A final FDOT signalization study and roundabout alternatives analysis was submitted to the County from FDOT on 10/2/15. A roundabout is the preferred alternative, and is tentatively scheduled for construction in FY 2020-2021. As an interim safety measure, FDOT is expected to modify the median to a directional type in FY 2016.	PL	TBD
Saved as: S:\Public Works\Division-Admin\Project Update Reports			B - Bid C - Construction CD - Conceptual Design D - Design	PC - Post Construction PL - Planning TBD - To Be Determined WC - Waiting Construction

PUBLIC WORKS DIVISION

PROJECT SUMMARY

October 27, 2015

SUMTER COUNTY ROADWAY PROJECTS UPDATE

ROADS		SCOPE	*PHASE	PROJECT BUDGET (THROUGH FY2016)
1	C-462 Widening	This roadway widening project includes reconstruction of approximately 2.3 miles of roadway from US 301 to C-466A, within the City limits of Wildwood. The final roadway configuration will include one travel lane in each direction, a bi-directional center turn lane, and a bike lane and sidewalk on both sides of the roadway. Utility relocation has been delayed, and is now expected to be completed in December 2015. Roadway construction will begin after utility relocation. The expected start date for roadway work is 1/15/16. Project completion is expected within 12 months of the start of roadway construction.	C	\$5,333,000
2	C-466W Widening	This roadway widening project includes reconstruction of approximately one mile of roadway from CR 209 to US 301 within the City limits of Wildwood. The final roadway configuration will include one travel lane in each direction, bi-directional center turn lane, and a bike lane and sidewalk on both sides of the roadway. Final design plans were received on 8/7/15. Rights-of-way acquisition is nearly complete. Construction is expected to occur in 2017.	ROW	\$967,742
3	C-476 W	The purpose of this project is to replace the existing edge and centerline striping with rumble striping for a 9.1± mile section of C-476 W from the Hernando County Line to US 301. Final design plans were submitted on 6/26/15. An agreement with FDOT for construction funding is being prepared. Construction is expected to begin in early 2016.	WC	\$250,000
4	C-468 Widening, from US 301 to CR 505	This roadway widening project includes reconstruction of approximately 1.7 miles of roadway from US 301 to CR 505. The final roadway configuration will include a four-lane divided urban typical section with sidewalks and bicycle lanes. The project is being coordinated in close fashion with the Wildwood Springs DRI's site planning process. The design is 90% complete, and expected to be completed in October 2015. A construction timetable has not yet been determined.	D	\$180,893
5	C-468 second bridge over the Florida Turnpike and widening from CR 505 to east of the Turnpike	This project involves the construction of a second bridge over Florida's Turnpike at C-468 and the widening, to four lanes, of C-468 between CR 505 to east of the Turnpike. Construction of bridge support structures is underway. Pile driving is completed, and the roadway widening is nearly complete. Completion of all project construction is scheduled for June 2016.	C	\$3,500,000
6	Partial construction of the Half and Full Interchange at C-468 and the Florida Turnpike	The construction of the interchange and lighting portions of this project are on hold, pending release of construction by the Florida Turnpike. The portions of the project currently under construction are the stormwater detention ponds, the Intelligent Transportation System (ITS), and the interchange ramp turnouts; this work is scheduled to be completed by April 2016.	C	\$3,504,530
7	CR 501 Preliminary Engineering Study	A Preliminary Engineering Study (PES) is being conducted for CR 501 from C-468 E to C-470 E. There was a public meeting regarding the study on 6/3/2015. A presentation was made to the MPO Technical Advisory Committee and the Citizen Advisory Committee on 8/12/15, and to the MPO Governing Board on 8/26/15. The draft PES report was received on 8/21/15. A public hearing is scheduled for 10/27/15. Concept design is expected to be completed in December 2015, and will be presented to the BOCC for approval in late December. A schedule and funding source for design and construction is grant dependent.	PL	\$84,750
8	C-475 from C-470 E to CR 542	Project involves milling and resurfacing of C-475S from C-470 to CR 542. Scope also includes adding 4' paved shoulders and replacing the bridge over Jumper Creek.	PL	\$400,000
9	C-470, C-475N, and C-575 Safety Improvements	An RFQ is being developed for the design of safety improvements to C-470 between CR 424 and Wilderness Drive (0.6 miles); C-475N between SR 44 and the Marion County line (6.3 miles); and C-575 between C-476W and C-48W (along 0.8 miles of curves). These safety improvements include adding paved shoulders, installing raised pavement markers, installing edge line rumble strips, and other related safety improvements. Design is scheduled to occur in FY 2016, and construction is scheduled to occur in FY 2018. This project is funded with FDOT Local Agency Program (LAP) funds.	PL	\$200,000
10	C-478 from US 301 to SR 471	This 5.5 miles of roadway is scheduled to be resurfaced in FY 2016.	PL	\$750,000
11	CR 101 Improvements	To accommodate increased traffic volume, this project consists of matching the current curb and gutter section of roadway from the Villages of Parkwood to CR 104 (2640'); then transitioning to a typical rural section ending 3200' north of CR 104. Design is expected to occur in FY 2016, with construction scheduled for FY 2017.	PL	\$60,000
12	South Buena Vista Boulevard	This roadway will be milled and resurfaced from the North Odell Circle/Bailey Trail roundabout to the South Odell Circle roundabout (9000'). This work is scheduled to occur in FY 2016.	PL	\$750,000
FUTURE PROJECTS				
1	CR 673 from CR 674 west to I-75	This 3.5 miles of roadway will be reconstructed. This work is scheduled to occur in FY 2017.	FY 17	\$2,032,000
2	C-48W Safety Improvements	C-48W from the Citrus County Line to CR 616 is a roadway safety upgrade project (adding 5' paved shoulders, audible edge line, and guardrail at the curves) approximately 7.5 miles in length. A public meeting was held on 4/16/2015 to discuss the 60% plans. 100% design plans were submitted to the County on 5/29/15. Construction is expected to begin in 2017, when FDOT grant funds are programmed.	WC	\$450,000
3	C-472 @ US 301 Intersection	A final FDOT signalization study and roundabout alternatives analysis was submitted to the County from FDOT on 10/2/15. A roundabout is the preferred alternative, and is tentatively scheduled for construction in FY 2020-2021. As an interim safety measure, FDOT is expected to modify the median to a directional type in FY 2016.	PL	TBD
Saved as: S:\Public Works\Division-Admin\Project Update Reports			B - Bid C - Construction CD - Conceptual Design D - Design	PC - Post Construction PL - Planning TBD - To Be Determined WC - Waiting Construction

Minutes
Lake~Sumter Metropolitan Planning Organization
Technical Advisory Committee (TAC) Meeting

Wednesday, October 14, 2015
Regular Meeting, 1:30 p.m.

1616 South 14th Street
Leesburg, Florida 34748
Phone (352) 315-0170 – Fax (352) 315-0993

OPENING

Vice-Chairman Richard Baier called the meeting to order at 1:39 p.m.; and confirmed the meeting was properly noticed and a quorum was present.

Members Present

Richard Baier, Vice Chairman	Sumter County
Kyle Mills	Sumter County/Transit
Dawn McDonald	Lake County Schools
Denise Lee	City of Bushnell
Jim Hitt	City of Clermont
Tom Carrino	City of Eustis
Thad Carroll	Town of Lady Lake
DC Maudlin	City of Leesburg
Chris Schmidt	Lake County
Stephen Cross	Town of Astatula
Melanie Peavy	City of Wildwood
Ryan Berger	City of Groveland
Aaron Mercer	City of Umatilla
Fred Schneider	Lake County
Karl Holley	Sumter County

Members Absent

Mark Reggentin, Chairman	City of Mount Dora
Gary La Venia	City of Fruitland Park
Jacques Skutt	City of Tavares

Staff Present

T.J. Fish	Executive Director
Pam Richmond	MPO Project Manager
Mike Woods	Transportation Planner
Francis Franco	GIS Manager
Doris Davis	Executive Assistant
Thomas Burke	Transportation Planner

Others Present

Vickie Wyche	FDOT
Ms. Karla Monica Limbo	Philippines
Ms. Mona Irmiana Mohd Alimin	Brunei

I. REPORTS

- A. Florida Department of Transportation
Vickie Wyche, MPO Liaison gave updates on the construction in progress and lane closures in Lake/Sumter Counties
- B. Florida's Turnpike Enterprise
None
- C. County Reports
Richard Baier made mention that the reports for Sumter County were attached.
- D. MPO Staff
T.J. Fish introduced Thomas Burke, a returning LSMPO employee, and provided a brief summary of the projects that he will be working on. Mike Woods provided information on an upcoming Forum & Bike-Ped Safety Summit that will be held in Clermont on November 13-15. He encouraged everyone to please attend if possible.
- E. TAC: Members Comments and Reports
Richard Baier introduced Ms. Karla Monica Limbo from the Philippines and Ms. Mona Irmiana Mohd Alimin from Brunei. They are currently in the ICMA Professional Fellows Program. The purpose of the visit in this area is to understand Public Works. Dawn McDonald thanked Mike Woods (LSMPO), Vickie Wyche and staff (FDOT), and the City of Minneola for their assistance in setting up a temporary bus stop at the Park & Ride for the students of Lake Minneola.

AGENDA UPDATE

None

II. COMMENTS FROM THE GENERAL PUBLIC ON ANY AGENDA ITEMS

No public comments were made.

III. ACTION ITEMS

- A. September 9, 2015 Meeting Minutes
Motion was made by Jim Hitt to approve the September 9, 2015 minutes, seconded by Chris Schmidt– **motion passed 15-0.**
- B. TRANSPORTATION 2040 - Recommend Approval of Draft Document
T.J. Fish presented the formal draft document updating the MPO's Long Range Transportation Plan. Mr. Fish explained that Transportation 2040 will be presented to the MPO Governing Board on October 28, at which time the board will be requested to approve the draft document and open an official public comment period, which would commence on November 5. This will give staff sufficient time to address any recommended changes that may result from the actions of committees or of the Governing Board. The proposed schedule meets the requirements of the Public Involvement Plan. Mr. Fish asked for any changes and a recommendation of approval of the draft document. **Motion** was made by Jim Hitt to approve the draft document, seconded by Chris Schmidt – **motion passed 15-0.**
- D. Draft Legislative Positions and Priorities
T.J. Fish asked committee members to share any items of interest that may be taken up by governmental/professional associations to the Lake County State Legislative Delegation. The approved document will then be distributed to local delegates and to appropriate legislators serving on applicable committees. The legislative process will be monitored through the session, which is to end in March. Richard Baier stated that number 4 on the Draft 2016 Legislative Priorities list which reads *Set Statewide Goals to Reduce Florida's Bicycle and Pedestrian Fatalities*, should be rewritten so that the MPO lobbies to have a reexamination of the current

Legislation in order to strengthen and clarify the current language as to its wording related to a pedestrian safely crossing the street and having the right of way. Aaron Mercer requested that North Lake Trail/Umatilla be added to Regional Projects. **Motion** was made by Chris Schmidt to approve the Draft Legislative Positions and Priorities List, seconded by Kyle Mills – **motion passed 15-0.**

IV. DISCUSSION ITEMS

A. List of Priority Projects – Submittal of New Projects

T.J. Fish discussed the annual process of developing the 2016 List of Priority Projects which begins this month. Mr. Fish asked that committee members prepare for submittal of new projects and to begin work on the project application forms for any new projects that they may have. This is the second and final year the MPO has funding through FDOT to manage consultants in assisting in the preparation of all required information in the application packages. The submittal of new projects and application packages must occur by January 13, 2016.

B. 2015 Horizon Award Nominations

T.J. Fish discussed that the 2015 Horizon Award Nominations are currently underway. Committee members are encouraged to nominate deserving local governments for transportation projects or policies that were advanced during 2015. Nominations can also be submitted for leadership and for Volunteer of the Year. The awards will be presented at the Ninth Annual Horizon Awards Dinner in January.

C. Complete Streets Workshop

T.J. Fish provided an update on the workshop that was held on October 7, on the Complete Streets Program that was hosted by FDOT District 5. Various members of the TAC Committee were also present at the workshop and provided update/feedback as well.

V. PROJECT UPDATES

T.J. Fish went over the following updates, a summary page was included in the agenda package.

- A. US 301 Project Development and Environment Study (Sumter County) – US 301/SR 44 Intersection Improvements and US 301/Florida's Turnpike Interchange Improvements
- B. I-75/CR 514 Interchange Planning (Sumter County near Coleman)
- C. C-470 Study
- D. Wekiva Parkway Project
- E. Trails: Central Florida C2C Trail and Wekiva Trail
- F. Minneola Interchange: Florida's Turnpike/North Hancock Road/Citrus Grove Road
- G. Lake-Orange Parkway (US 27 to SR 429)
- H. SR 50 Corridor Study

VII. CONFIRMATION OF REPRESENTATIVE ATTENDING GOVERNING BOARD MEETING

Richard Baier confirmed he will attend the October 28, 2015 meeting.

VIII. ADJOURNMENT

Following a motion by Chris Schmidt, seconded by Kyle Mills, the meeting adjourned at 2:50 p.m.

Mark Reggentin, Chairman

2016 TAC Meeting Calendar

Meeting dates for 2016 are scheduled the second Wednesday of the month at 1:30 p.m. All meetings are scheduled in the MPO Board Room at the Lake~Sumter MPO, 1616 South 14th Street, Leesburg.

There is no meeting scheduled in March, July or December.

January 13, 2016
February 10, 2016
March – NO MEETING
April 13, 2016
May 11, 2016
June 8, 2016
July – NO MEETING
August 10, 2016
September 14, 2016
October 12, 2016
November 9, 2016
December – NO MEETING

Lake~Sumter MPO



TRANSPORTATION 2040

FINAL DRAFT
LONG RANGE
TRANSPORTATION PLAN

(Page intentionally blank)

Table of Contents

Table of Contents.....	3
Maps and Tables	4
Introduction.....	5
Plan Overview	7
Goals and Objectives	10
Plan Development	12
Constrained Corridors	12
Regional Growth and Land Use	15
Financial Resources.....	21
Safety and Security	22
Freight and Goods Movement.....	25
Environmental Impacts.....	29
Transportation Needs Analysis	30
Public Outreach Process	38
Alternative Transportation Strategies and Project Needs	40
Roadway Capacity Projects	40
Complete Streets Program	41
Regional Trails Program.....	42
Safe Schools Emphasis Program	44
Transportation System Management and Operations (TSM&O) Program	45
Intelligent Transportation Systems (ITS) Program.....	46
Sidewalk Program	47
Cost Feasible Elements	48
Unfunded Needs	48

Maps and Tables

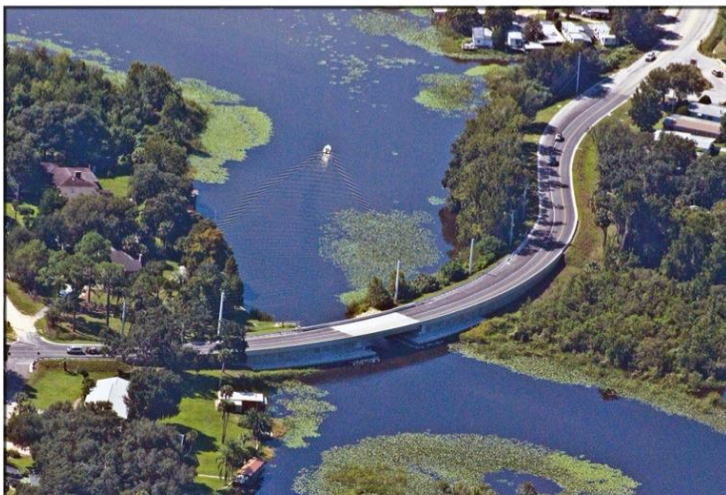
Map 1 Lake Sumter MPO Planning Area Boundaries	8
Map 2 Maximum Lane Constrained Corridors	14
Map 3 Total Population Year 2010	17
Map 4 Total Population Year 2040	18
Map 5 Total Employment Year 2010	19
Map 6 Total Employment Year 2040	20
Map 7 Central Florida Freight Network	28
Map 8 Environmentally Protected Areas	31
Map 9 Roadway Needs Plan	33
Map 10 Transit Network Needs	37
Map 11 Regional Multiuse Trails Network	38
Map 12 Cost Feasible Plan Map	52
Table 1 Population and Employment Estimates	16
Table 2 Projected State and Federal Resources	22
Table 3 Cost Feasible Projects	48-51

Introduction

Transportation is a central component of daily life. Transportation affects everyone and plays a critical role in quality of life, now and into the future. The transportation decisions made today will have a direct impact on the economy of the region as well as the health and well-being of residents and visitors

Transportation 2040, the Lake~Sumter MPO's Long Range Transportation Plan (LRTP), is the planning document that will guide MPO decisions on the expenditure of federal and state transportation funds for highway, transit, freight, pedestrian and bikeway projects within the Lake~Sumter MPO planning area (see Map 1). The LRTP represents the culmination of a multi-level partnership between local, state, and federal policy-makers and the citizens, business owners, and stakeholders who are most impacted by transportation decisions. This document will be used as a tool in the planning process to assist in addressing the region's needs as the area continues to grow and develop.

The LRTP is a federally required long-term planning document detailing the transportation improvements and policies to be implemented in the MPO Area. The LRTP is revised at least once every five years and must address at least 20 years into the future for the



duration of its five-year lifespan in accordance with the Code of Federal Regulations (CFR) Title 23, Section 134, CFR Title 49, Section 5303, and the Moving Ahead for Progress in the 21st Century Act (MAP-21) (Pub L. 112-141, July 6, 2012). *Transportation 2040* updates the previous LRTP from a horizon year of 2035 to a horizon year of 2040. The goals of the plan update are to: 1) identify current transportation needs, 2) forecast future transportation needs, and 3) establish strategies and projects that address these needs.

An important addition to this update of the LRTP is the inclusion of a listing of programs that are tied to alternative transportation strategies for mobility in the MPO Planning Area. These programs include a Regional

Trails Program; a Complete Streets Program; a Safe Schools Emphasis Program; a Sidewalk Program; and a Management and Operations Program. Each program is tied to a list of projects, a policy, or regional master plan adopted by the MPO. The Federal Highway Administration (FHWA), the Florida Department of Transportation (FDOT) and the Federal Transit Administration (FTA) now put a high level of importance on these types of programs and projects, requiring their inclusion in the MPO planning process.

The MPO enthusiastically embraced these types of alternative transportation strategies in the previous long range transportation plan, *Transportation 2035*, acknowledging that continuing to focus transportation planning on the addition of roadway capacity was not the means to achieve the goals set for quality of life, growth management, or economic development. *Transportation 2040* continues the positive momentum of the previous plan by taking a socially-, environmentally- and economically-sustainable approach to stewardship.

An equally important addition to this update is proactively developing *Transportation 2040* as a performance based plan. MAP-21 introduced requirements for performance-based planning and the definitive process is still being developed at the federal level. The final requirements are expected to be in place for MPOs by 2018. The MPO will take action at that time to enhance performance-based planning efforts.

Transportation 2040 addresses the challenge of meeting needs in the face of fiscal constraints. The plan balances multiple modes of transportation while considering social impacts, the natural environment, and enhancement of the economy. Furthermore, the plan respects the visions of the Lake~Sumter MPO's two counties and 19 municipalities.



Plan Overview

Transportation 2040 serves as a guide, describing how the existing transportation system functions and how our community would like for it to function in the future. In addition, it considers the value of investments already made in developing the transportation system. The plan considers innovative solutions to mobility constraints and focuses on enhancing available travel choices.

Transportation 2040 prioritizes programs and projects that have been developed to address the Lake~Sumter region's need to maintain and preserve our existing transportation assets for the sustainability of the region's economic competitiveness and the vitality of our communities (see Map 1).



The MPO developed Transportation 2040 in compliance with current federal legislation, Moving Ahead for Progress in the 21st Century (MAP-21), which governs MPO activities. In keeping with MAP-21, planning for this LRTP incorporated a number of new elements that brought more information, for both the MPO and the public, to the decision-making process. The MPO has embraced performance-based planning practices for this LRTP and the MPO has expanded its use of new and innovative planning tools, such as scenario planning, to inform decisions.

This plan includes elements that lead to the development of a balanced multi-modal transportation system that facilitates the efficient movement of people and goods. The plan has several key components:

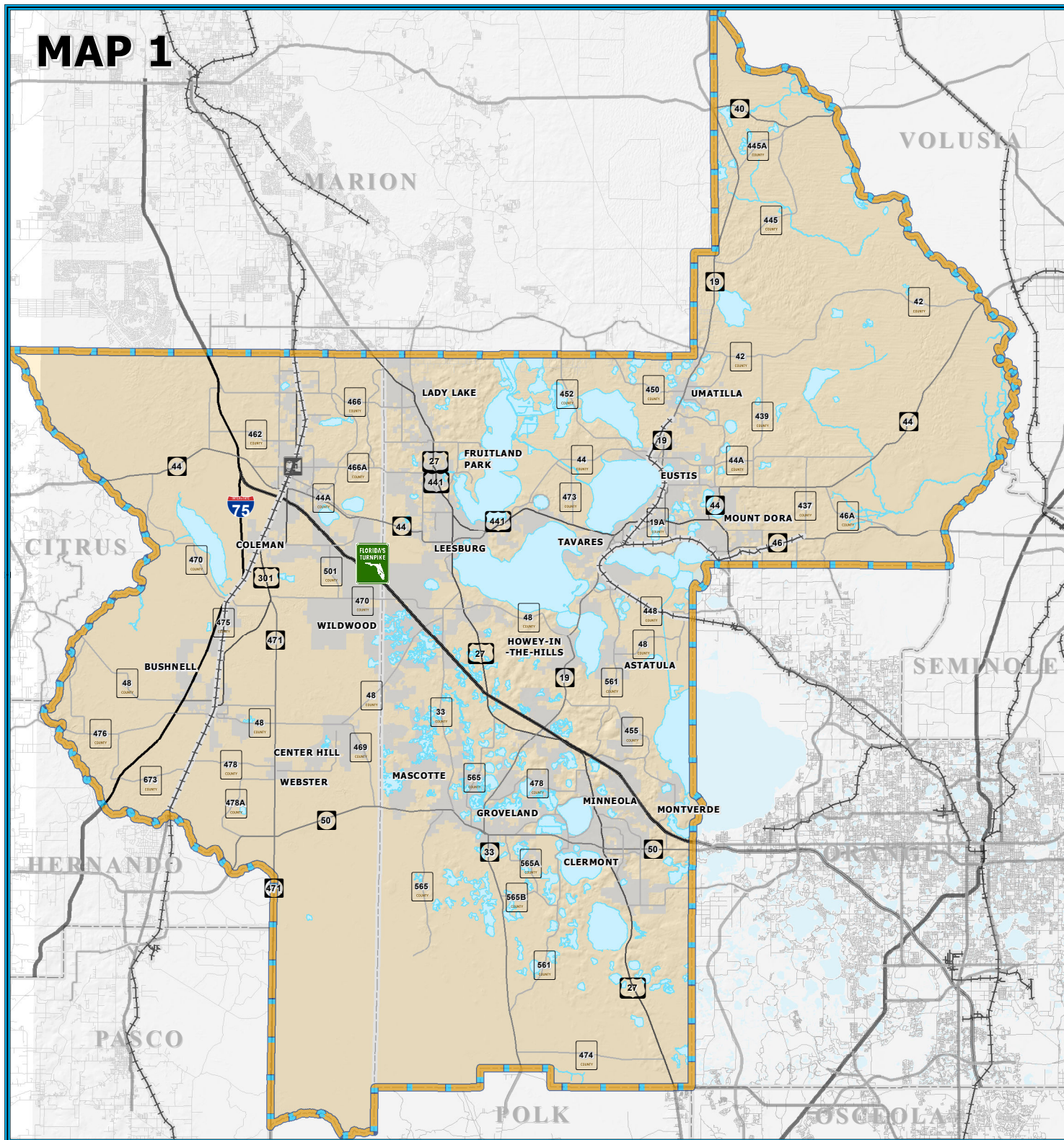
1. Plan Development focused on a multi-modal outcome that includes roadways, transit, non-motorized transportation, and inter-modal considerations, as well as management and operation and preservation of the existing system;



PLANNING AREA BOUNDARY



MAP 1



LEGEND:

- | | | | |
|-------------|--|--------------------------|--|
| County Road | | Water Body | |
| State Road | | County Delineation | |
| US Highway | | Amtrak Station | |
| Interstate | | -Bus Service Only | |
| Turnpike | | Active Railroad | |
| | | Municipal Area | |
| | | Lake~Sumter MPO Boundary | |

MAP COMPOSITION:
SEPTEMBER, 2015



1 INCH EQUALS 8 MILES



2. Transportation Needs List formulated through public involvement, through quantifiable long range need projections, and through the coordination of regional land use and economic development goals and plans of the MPO's member governments; and
3. Cost Feasible Projects List developed by estimating costs of the identified needs in the future years projects are likely to occur, by estimating future revenues reasonably expected to be available, and by applying the revenues to the identified needs in a way that maximizes the benefit of each dollar while also considering the prioritization of needs.



Public participation provided on-going critical input to the MPO's decision-making process. Throughout development of this LRTP, the MPO engaged in extensive outreach with an eye toward making public participation convenient by taking advantage of opportunities where people were already gathering. Through a series of public meetings of the MPO and member governments, speaking engagements, information kiosks and social media, the MPO sought opportunities to interact with people who may previously have

been only minimally involved in the continuous, comprehensive, cooperative (3C) planning process. These outreach efforts reflected the MPO's recently updated public involvement plan that includes using more electronic forms of communication and interactive engagement techniques.

Goals and Objectives

In previous Long Range Transportation Plans, the MPO developed Goals, Objectives and Policies/Strategies that addressed regional and local issues, supported regional and local initiatives, and set the framework for project priorities to better address the many challenges faced in the region. The federal Moving Ahead for Progress in the 21st Century Act (MAP-21) now requires MPOs to transition to Performance-Based Planning.

MAP-21 introduced requirements for performance-based planning integrating performance management into many federal transportation programs. USDOT must establish performance measures for safety, pavement conditions, bridge conditions, operational performance of the national Interstate Highway System, operational performance of the Non-Interstate National Highway System, freight movements, mobile source emissions, and congestion. The federal performance measures are expected to be completed by 2017.

Once USDOT issues a final rule on the federal performance measures, each state has one year to set performance targets for each federal performance measure. Within 180 days of states setting performance targets, MPOs must also establish performance targets for each of the ten (10) federal performance measures and must use a performance-based approach to transportation decision making.

The purpose of the performance-based planning rule is to establish a method for tracking the progress on meeting the MPO's goals and objectives. The MPO supports performance-based planning and is prepared to develop performance measures and targets. The MPO will amend *Transportation 2040* at such time the federal rule is in place and the state establishes its performance targets. At that time, the MPO will work with FDOT to develop performance measures and targets that are consistent with state and federal policies.

National Goal Areas

Safety

Infrastructure Condition

Congestion Reduction

System Reliability

Freight Movement and Economic Vitality

Environmental Sustainability

Reduced Project Delivery Delays

Transit State of Good Repair

Transit Safety

GOAL 1 – INVESTING IN TRANSPORTATION TO SUPPORT A PROSPEROUS, COMPETITIVE REGIONAL ECONOMY

- OBJECTIVE - Provide an efficient, interconnected transportation system to advance and support the economic well-being and quality of life of the region.
- OBJECTIVE - Improve travel reliability on major freight routes
- OBJECTIVE– Enhance access to jobs

GOAL 2 – PROVIDING A SAFE AND SECURE TRANSPORTATION SYSTEM FOR ALL USERS

- OBJECTIVE - Minimize crashes and fatalities for all modes of transportation
- OBJECTIVE – Improve safety for pedestrians and cyclists
- OBJECTIVE – Facilitate accessibility for emergency response vehicles

GOAL 3 – PROACTIVELY MANAGING THE OPERATIONS OF THE REGIONALLY SIGNIFICANT TRANSPORTATION FACILITIES IN THE MPO PLANNING AREA FOR ALL USERS

- OBJECTIVE - Improve transportation options available to residents, business patrons and visitors
- OBJECTIVE – Balance regional capacity needs with human scale accessibility needs (Complete Streets)
- OBJECTIVE – Adopt a Complete Streets policy that supports the development of a list of Complete Streets projects
- OBJECTIVE – Invest in Intelligent Transportation Systems (ITS) as an alternative to adding roadway capacity

GOAL 4 – IMPROVING MOBILITY OPTIONS AND CONNECTIVITY FOR PEOPLE AND GOODS

- OBJECTIVE - Invest in strategies to reduce per capita vehicle miles traveled (VMT)
- OBJECTIVE – Increase modal opportunities and modal enhancements within communities
- OBJECTIVE - Improve freight facility connectivity in the Lake~Sumter Region across all modes of transportation

GOAL 5 - MAKING TRANSPORTATION DECISIONS THAT SUPPORT COMMUNITIES' VISIONS AND PROMOTE RESPONSIBLE SOCIAL, ECONOMIC AND ENVIRONMENTAL STEWARDSHIP

- OBJECTIVE – Coordinate regional transportation planning efforts and local comprehensive planning efforts
- OBJECTIVE - Reduce negative environmental impacts associated with transportation investments
- OBJECTIVE – Ensure Environmental Justice (EJ) is considered in all aspects of MPO planning

Plan Development

Transportation 2040 is organized around transportation corridor strategies that include roadway capacity projects; the Complete Streets Program; the Regional Trails Program; the Safe Schools Emphasis Program; the Sidewalk Program; and Management and Operations Program. The plan is driven largely by future economic growth needs and strategies. While this plan is departure from past long range transportation plans which relied almost completely on a travel demand model for forecasting travel patterns, this plan takes a creative and customized approach to long range planning by using an assortment of tools in its development, the travel demand model being just one of many employed.

Plan development began in 2012 as a regional collaborative effort among FDOT District 5, Florida's Turnpike Enterprise, Central Florida Expressway (formerly Orlando-Orange County Expressway Authority) and the five MPOs located



within FDOT District 5. This group met regularly to develop the Central Florida Regional Planning Model (CFRPM) version 6.0. Plan development culminated in November 2015 when the draft plan was presented for public comment before its December 9, 2015 adoption by the Lake~Sumter MPO Governing Board.

Significant contributions were made toward this plan by the municipalities and counties within the MPO Planning Area, as well through the participation of chambers of commerce, economic development interests, civic groups, the MPO's advisory committees and task forces, and through the input of the residents of Sumter County and Lake County.

Constrained Roadways

Building on the regional growth vision developed as part of our previous long range transportation plan, *Transportation 2040* is reflective of the MPO's adopted Constrained Roadways Policy (See Map 2). The policy is an acknowledgement that community visions cannot always be achieved through road widening projects. Some constraints are tied to growth management plans, while others are to avoid undesired environmental,

economic or social impacts. There are more than a thousand named lakes in Lake County and Sumter County in addition to numerous environmentally-sensitive area, requiring a creative and customized approach to addressing current and future mobility needs.

In February of 2008, the Lake Sumter MPO adopted policy 2008-1, The Corridor Constraint Policy. The purpose of this policy is:

- a) To preserve rural character in areas where existing conditions and land use designations do not require the need for additional capacity
- b) To limit the extent to which corridors will be widened in order to prevent roadways from becoming dividing factors within communities or to prevent widening

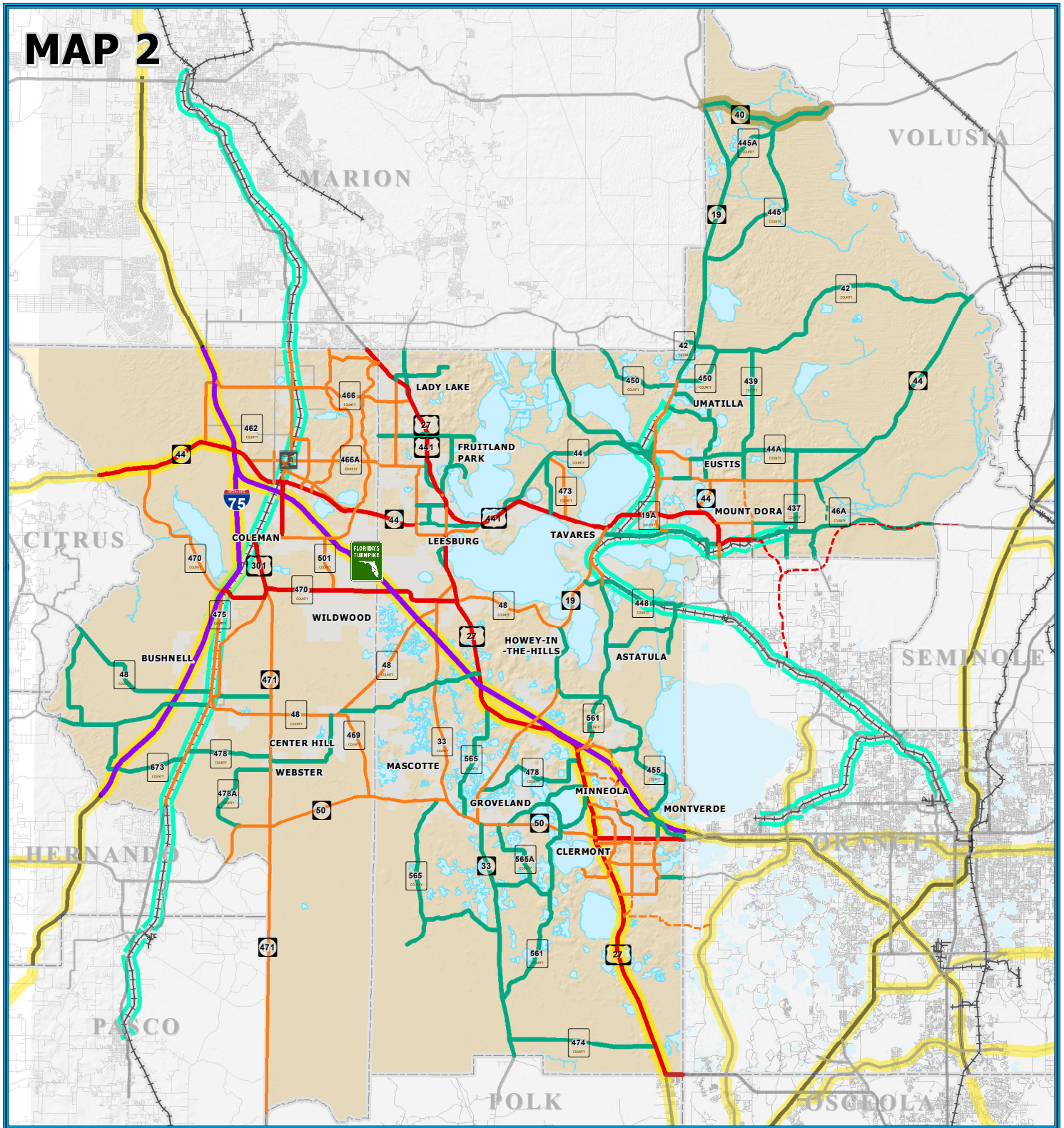


- projects causing the erosion of viable neighborhoods or districts
- c) To enhance the regional transportation network, spread demand for transportation capacity and maximize access to communities and center
- d) To promote the goal of migrating away from capacity improvements through the addition of lanes and to promote the migration toward additional capacity through mass transit improvements along appropriate arterial corridors
- e) To prevent a misallocation of fiscal resources toward lane-addition projects in which cost-benefit ratios are low in terms of cost versus new capacity

MAXIMUM LANE CONSTRAINED CORRIDORS



MAP 2



LEGEND:

- County Road
- State Road
- US Highway
- Interstate
- Turnpike
- Water Body
- County Delineation
- Amtrak Station -Bus Service Only
- Active Railroad

MAXIMUM LANE CONSTRAINTS

- 8 Lanes
- 6 Lanes
- 4 Lanes
- 2 Lanes
- FUTURE 6 Lanes
- FUTURE 4 Lanes
- FUTURE 2 Lanes
- Strategic Intermodal System
- Emerging Strategic Intermodal System
- Railroad SIS Facility

0 4 8
1 INCH EQUALS 8 MILES

MAP COMPOSITION:
SEPTEMBER, 2015



Regional Growth and Land Use

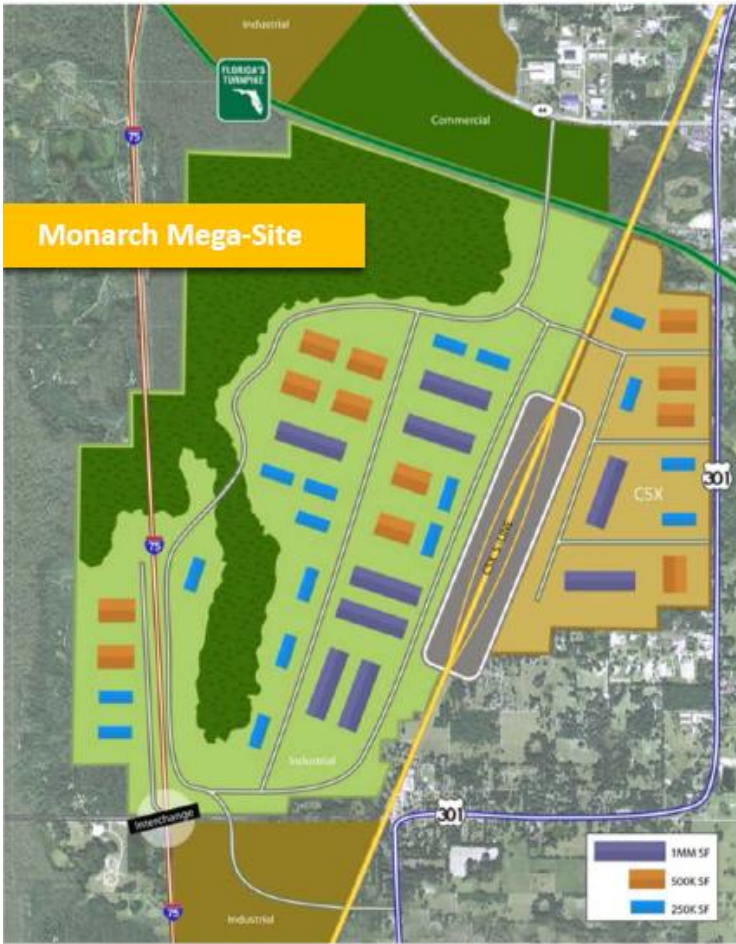
The Lake~Sumter region is once again experiencing significant population growth. 2040 population and employment forecasts or control totals were developed using information from the Bureau of Business and Economic Research (BEER), Woods & Poole Economics 2013 State Profile, and information reported in the 2010 U.S. Census. The growth rates for population forecast to 2040 were flat when compared to the 2035 population control total used in the previous plan. However, recalling the robust economy and population surge in



Central Florida in the mid-2000s when population and employment projections were made for the previous plan, growth had dramatically slowed due to a major recession by 2010 when the previous plan was being adopted. Therefore, it is not surprising the 2035 population totals used in *Transportation 2035* are almost the same as the population totals forecast for 2040 in the plan update.



Historically, future jobs are calculated based on the ratio of population to employment. For this plan a different approach was necessary due to the progressive economic development plans implemented by Sumter County, Lake County, and many of the municipalities located in both counties. For example, in Sumter County, a large industrial site



known as Monarch Ranch became fully entitled for 16 million square feet of industrial development. Lake County adopted a large economic development overlay district | a significant portion of the county. This overlay district greatly expands the county’s ability to attract new commercial and industrial development which in turn creates new jobs. These are two of many examples that justified using higher employment control totals than those generated using the traditional ratio method. Using this information, the MPO worked closely with the member jurisdictions and their representatives to adjust the employment numbers and allocate the jobs to appropriate locations within the two-county planning area. The population and employment estimates used to develop *Transportation 2040* are shown in **Table 1**.

The MPO worked very closely with the member jurisdictions and their representatives to allocate the population and employment projections to the local level in terms of desired growth

patterns. The land use assumptions associated with this plan reflect the regional growth vision for the Lake~Sumter MPO Planning Area, not simply the advancement of locally adopted comprehensive plans. Maps 3, 4, 5 and 6 display the changes in population and employment anticipated from the plan base year, 2010 and the plan horizon year 2040.

Table 1 – Population and Employment Estimates

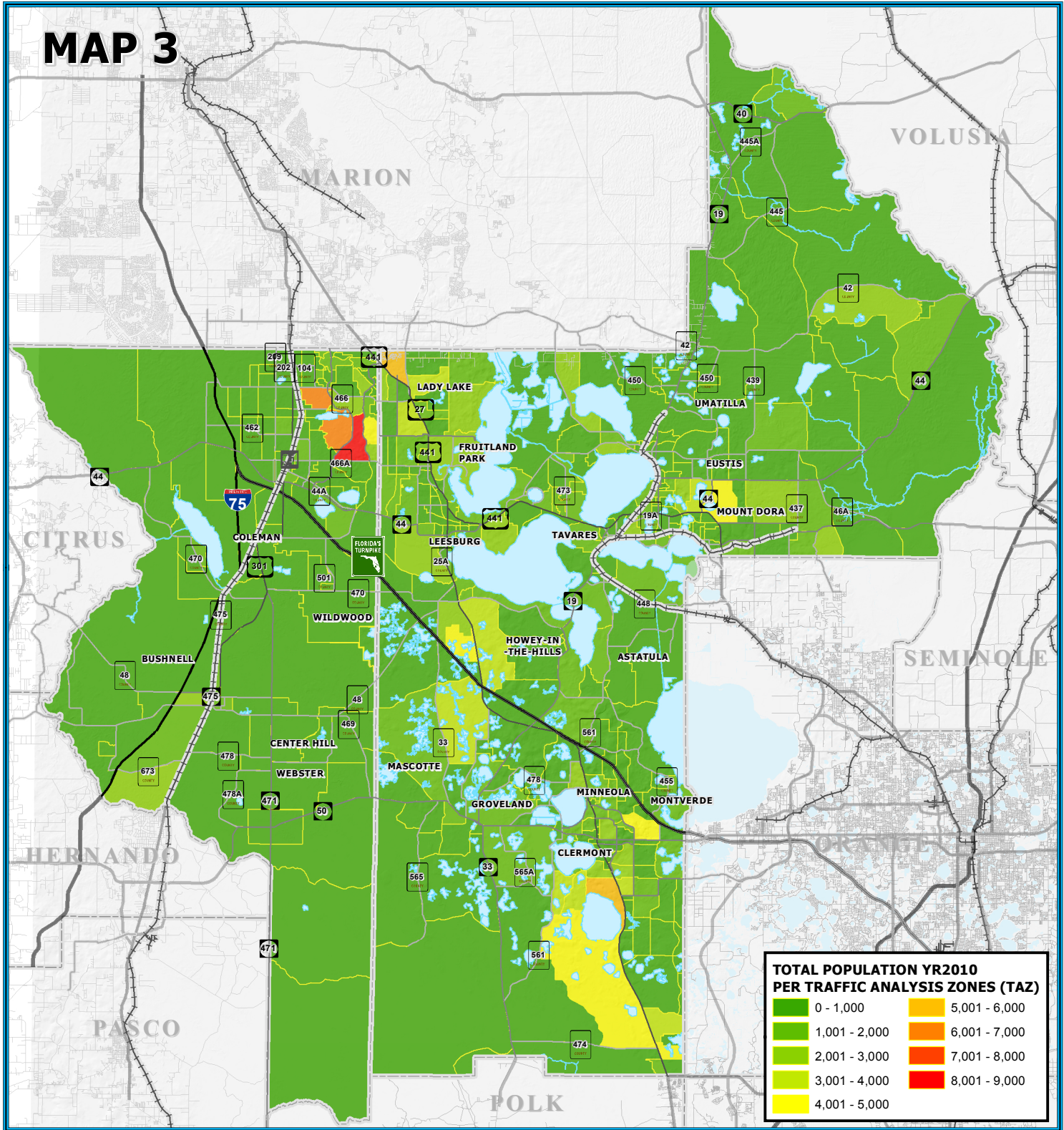
County	Total 2010 Population	Total 2040 Population	Growth Rate
Lake	320,268	547,500	2.37%
Sumter	104,208	241,350	4.38%
County	Total 2010 Employment	Total 2040 Employment	Growth Rate
Lake	122,075	208,688	2.43%
Sumter	28,311	88,181	7.05%



TOTAL POPULATION YEAR 2010



MAP 3



0 - 1,000	5,001 - 6,000
1,001 - 2,000	6,001 - 7,000
2,001 - 3,000	7,001 - 8,000
3,001 - 4,000	8,001 - 9,000
4,001 - 5,000	

- LEGEND:**
- County Road
 - State Road
 - US Highway
 - Interstate
 - Turnpike
 - Water Body
 - County Delineation
 - Amtrak Station
 - Bus Service Only
 - Active Railroad

MAP COMPOSITION:
SEPTEMBER, 2015



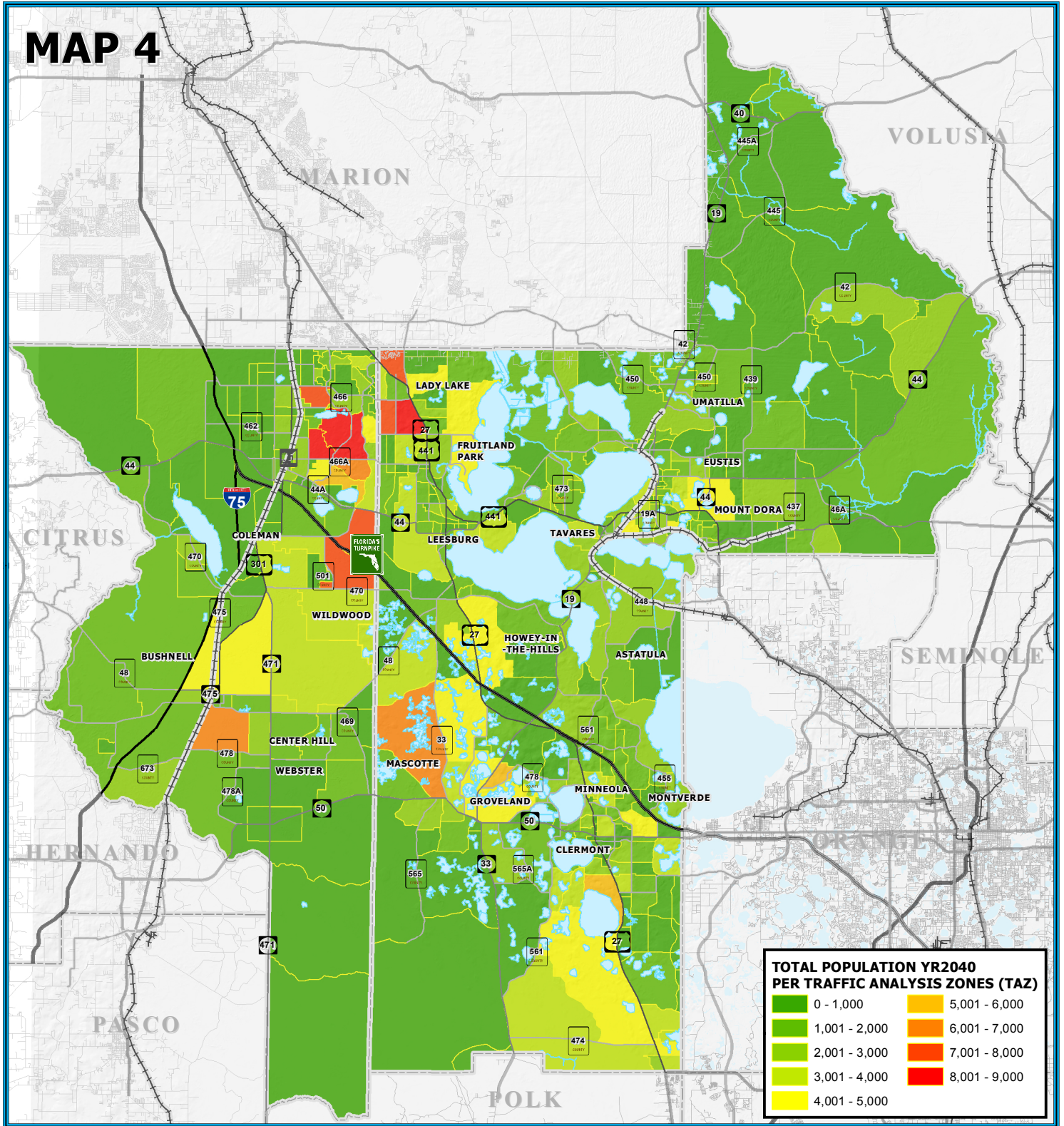
0 4 8
1 INCH EQUALS 8 MILES



TOTAL POPULATION YEAR 2040



MAP 4



- LEGEND:**
- County Road
 - State Road
 - US Highway
 - Interstate
 - Turnpike
 - Water Body
 - County Delineation
 - Amtrak Station
 - Bus Service Only
 - Active Railroad

MAP COMPOSITION:
SEPTEMBER, 2015



0 4 8
1 INCH EQUALS 8 MILES

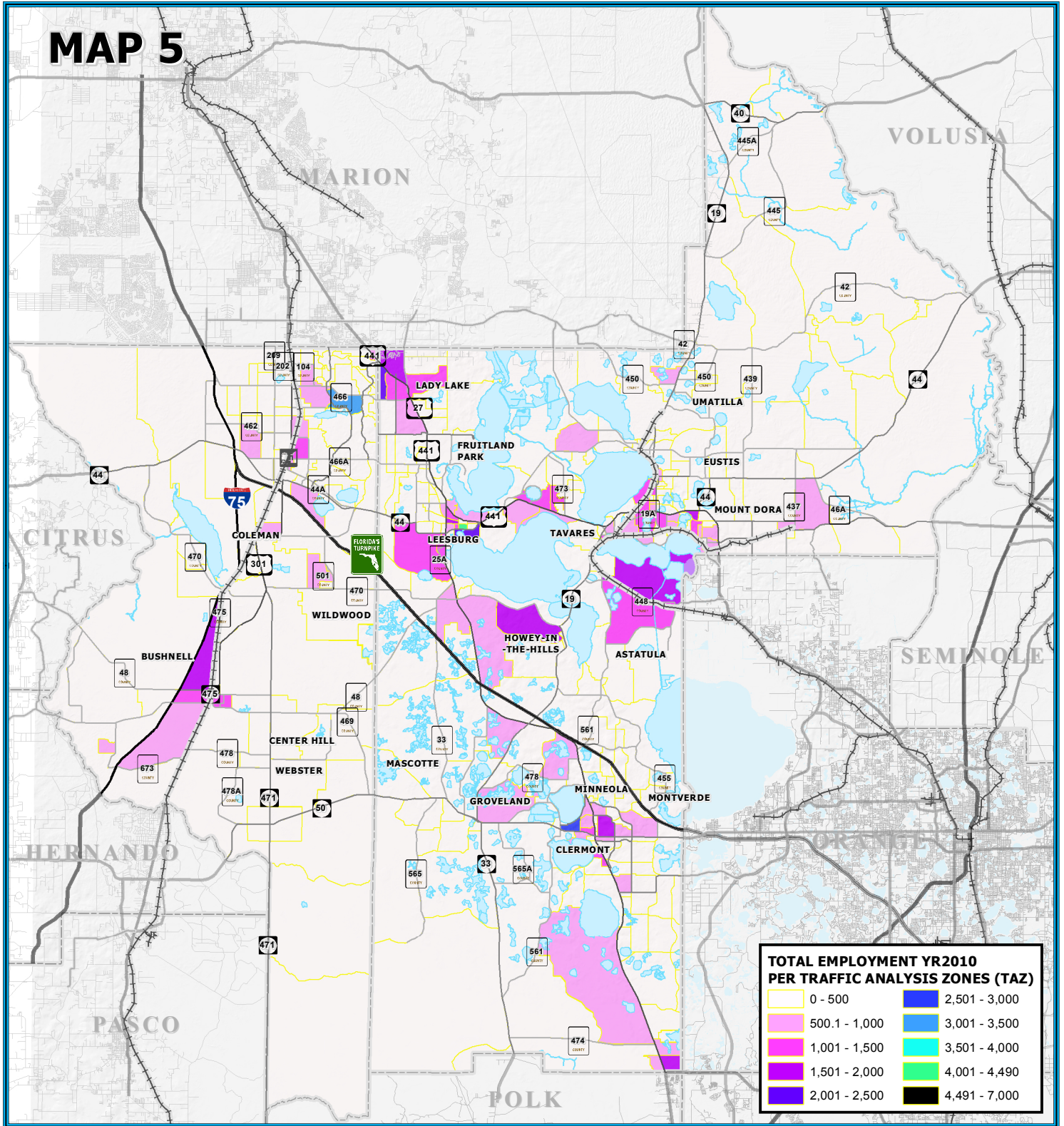




TOTAL EMPLOYMENT YEAR 2010



MAP 5



**TOTAL EMPLOYMENT YR2010
PER TRAFFIC ANALYSIS ZONES (TAZ)**

0 - 500	2,501 - 3,000
500.1 - 1,000	3,001 - 3,500
1,001 - 1,500	3,501 - 4,000
1,501 - 2,000	4,001 - 4,490
2,001 - 2,500	4,491 - 7,000

- LEGEND:**
- County Road
 - State Road
 - US Highway
 - Interstate
 - Turnpike
 - Water Body
 - County Delineation
 - Amtrak Station
 - Bus Service Only
 - Active Railroad

MAP COMPOSITION:
SEPTEMBER, 2015



0 4 8
1 INCH EQUALS 8 MILES

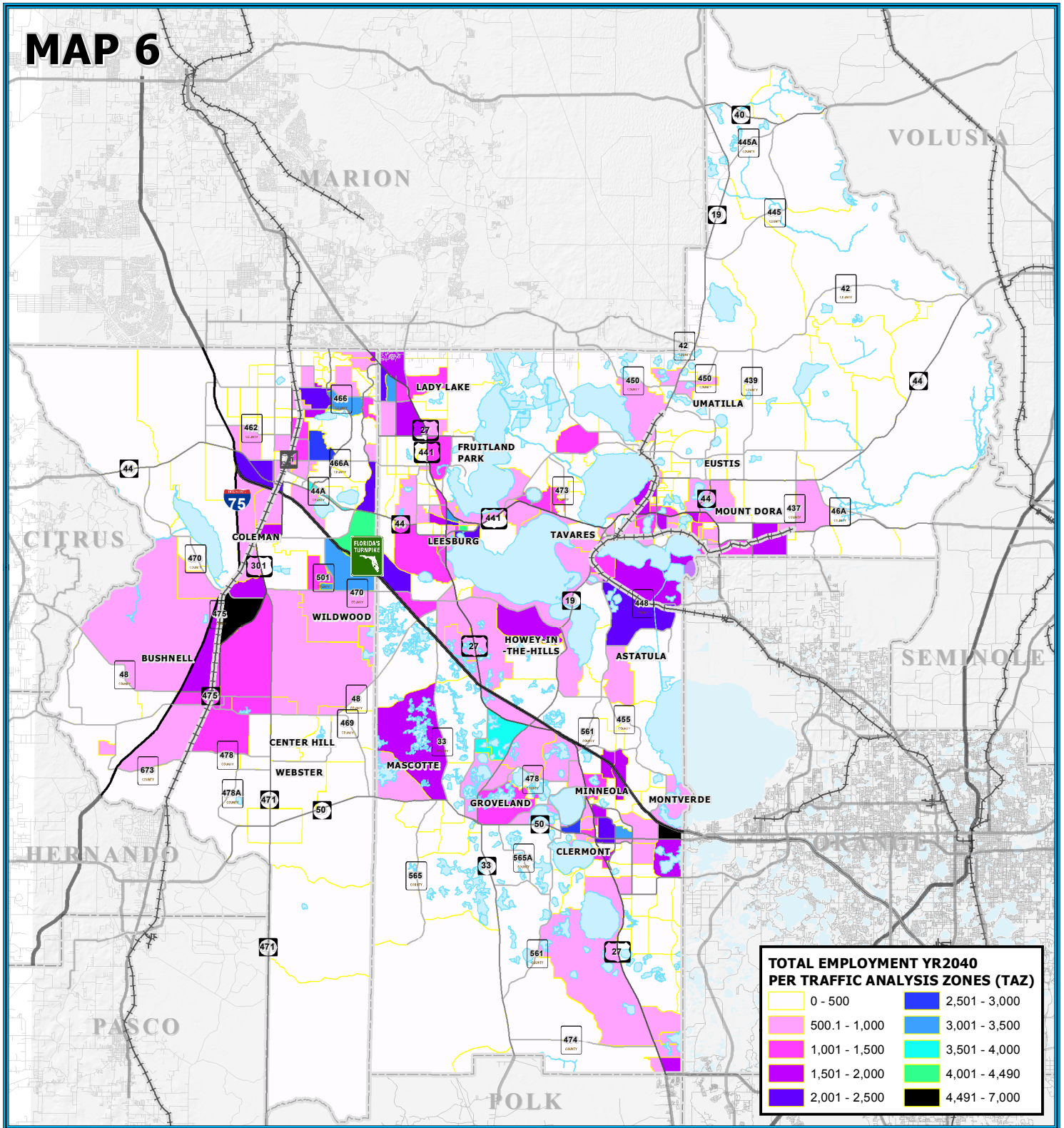




TOTAL EMPLOYMENT YEAR 2040



MAP 6



- LEGEND:**
- County Road
 - State Road
 - US Highway
 - Interstate
 - Turnpike
 - Water Body
 - County Delineation
 - Amtrak Station
 - Bus Service Only
 - Active Railroad

0 4 8
1 INCH EQUALS 8 MILES

MAP COMPOSITION:
SEPTEMBER, 2015



Financial Resources

Federal metropolitan planning requirements include developing a financial plan to demonstrate that the LRTP can be implemented over the life of the plan (23 CFR 450.322). The primary elements of the financial plan include costs and revenues needed to operate and maintain federal-aid highways and public transportation as well as including the costs for implementing capital investment projects identified in the plan and public transportation.

Federal funds to the region's transportation program are dependent on federal transportation legislation. Beginning in 1991 with the passage of the Intermodal Surface Transportation Efficiency Act (ISTEA), the pattern of federal transportation funding was characterized by the adoption of six-year federal transportation bills that advanced funding levels at an average annual rate greater than three percent (3%). Federal funding increases in these cases were approximately equivalent to the rate of inflation for the general transportation program.

In recent years, this pattern has changed with the 2005 Safe, Accountable, Flexible, Efficient Transportation Equity Act: A Legacy for Users (SAFETEA-LU), a four-year bill, and its successor 2012's Moving Ahead for Progress in the 21st Century Act (MAP-21), a two-year bill. There have also been 32 short-term extensions of these bills over the past six years and extensions are likely to continue until there is a new longer-term federal bill. The trend of shorter-term bills and consistent continuing resolutions has eroded the predictability in the transportation funding process.

The funding program presented in this document reflects federal and state funding allocations expected to be available through the Transportation Improvement Program (TIP). This revenue is likely to be supplemented by a number of additional state-managed programs such as the Transportation Regional Incentives Program (TRIP), discretionary programs such as the federal Transportation Alternatives (TA) program, and local funds invested high-priority regional projects. Because FDOT has decision-making authority of allocation of the non-local funds and the availability and amounts from these types of funding sources are dynamic, no revenues projections were attempted for the plan for those programs.

Statewide in Florida, approximately 25 percent of total transportation revenues forecasted by the Florida Department of Transportation (FDOT) for 2014 through 2040 come from federal sources. While 67 percent are from state sources and eight percent are Florida's Turnpike Enterprise revenues. According to Florida's Transportation Tax Sources – A Primer, for FY 2013, the receipts collected by the State Transportation Trust Fund (STTF) broke down as follows: state motor fuel tax comprised 32 percent of STTF receipts; motor vehicle tag and title fees were 15 percent; aviation fuel tax, rental car surcharge, and documentary stamp taxes were each less than three percent; and Federal Aid, which comes primarily from the federal fuel tax, was 34 percent. The balance of receipts came from toll facility reimbursement, local government participation, and other miscellaneous sources.

The figures discussed above represent statewide revenues. Lake and Sumter counties receive their proportionate shares based on a series of formulas tied to population and gas tax receipts. Table 2 provides revenue projections of state and federal sources available to Lake and Sumter counties as provided in the 2040 Revenue Forecast Handbook (July 2013) prepared by FDOT. "Other Arterials" revenues can be applied

to non-FIHS/SIS State Highway System roadways and “Transit” revenues can go toward technical and operating/capital assistance for transit, paratransit, and rideshare programs. “TA” funds are used for locally-defined projects like sidewalks and regional trails and are not used to fund capacity improvements. TRIP matching funds apply to improvements on facilities designated as regionally-significant and the funds are allocated within each district based on regional project prioritization processes.

Table 2 – Projected State and Federal Resources

PROJECTED REVENUES BY PLANNING PERIOD (IN MILLIONS OF YEAR OF EXPENDITURE DOLLARS)					
STATE/FEDERAL REVENUES ①					
PLANNING PERIOD	2021-2025	2026-2030	2031 - 2035	2036 -2040	TOTAL
OTHER ARTERIAL CONSTRUCTION/ROW	\$75.60	\$71.50	\$78.20	\$78.20	\$303.50
TRANSIT	\$42.50	\$44.70	\$46.90	\$46.90	\$181.00
TRIP FUNDS②	\$10.00	\$10.00	\$10.00	\$10.00	\$40.00
TRANSPORTATION ALTERNATVATIVES FUNDS②	\$4.20	\$4.20	\$4.20	\$4.20	\$16.80

① STATE/FEDERAL REVENUES FROM AUGUST 1, 2013 SUPPLEMENT TO THE 2040 REVENUE FORECAST HANDBOOK, 2040 FORECAST FOR LAKE-SUMTER MPO AREA. TOTALS MAY NOT SUM PERFECTLY DUE TO ROUNDING. REVENUES FOR SIS HIGHWAYS ARE ALREADY PROGRAMMED.

② TOTAL DISTRICTWIDE FUNDS

Safety and Security

Safety

In 2008, the MPO assumed responsibility for collecting, analyzing, and reporting local crash data. The Lake~Sumter MPO has replaced its GIS-based Crash Data Management System (CDMS) custom tool with FDOT’s new crash data management tool, Signal Four Analytics. The tool is an interactive web-based system designed to support the crash mapping and analysis needs of law enforcement, traffic engineering, transportation planning agencies, and research institutions throughout Florida. The tool helps address engineering and safety issues through the analysis of crash data. The Signal Four Analytics tool is adapted to target safety concerns through the 3E approach (engineering, enforcement, and education), as well as integrating the State of Florida’s Strategic Highway Safety Plan Emphasis Areas which include: (1) aggressive driving, (2) intersection crashes, (3) vulnerable road users, and (4) lane departure crashes. A key aspect of Signal Four Analytics is the ability to cross-reference county and state data sources to assess regional and local crash-related issues on both the state system and on the local roadway networks.



With this tool, the MPO will be able to continue generating regular reports and sharing information on safety issues to help coordinate with local and state jurisdictions to identify issues and recommend mitigation strategies to address safety problems. While safety is already a consideration in the current project prioritization process, this new system of monitoring will help provide more detailed information regarding crash locations, crash causes, crash rates, crash severity and other important considerations that will aid in targeting improvements related to safety.



An additional area of focus on safety for the MPO is to support educational efforts to address transportation safety. The MPO participates in collaborative relationships among various representatives of local governments, law enforcement, school districts, and emergency management. The MPO is engaged with community safety groups in both Lake County and Sumter County.

As the regional entity responsible for convening member jurisdictions and stakeholders to address transportation issues, the MPO used funds provided by FDOT to conduct the Safe School Access Transportation Study (SSATS). This study assessed the transportation conditions of each school located within Lake County and Sumter County. It is the foundation for the activities the MPO implemented to address a full range of safety issues relative to vehicular, pedestrian, bicycle and transit travel. *Transportation 2040*, includes a focus on implementing the and strategies the SSATS, which is for the MPO's Safe Emphasis Program.



projects identified in the premise School

Security

Federal law requires security to be part of the Lake~Sumter MPO transportation planning process. Awareness of both man-made and natural disaster security concerns have increased in recent years due to events like September 11, 2001, and Hurricanes Rita and Katrina. This element of the plan is intended to provide a new focus for the Lake~Sumter MPO region on interrelated security and transportation issues.

A secure transportation system is critical to overall national security from terrorism. Groups or individuals motivated to terrorize or injure people or the economy may well have transportation facilities as a target or a tool. It is likely such efforts would have a transportation element in an overall plan of terrorism. Thus, securing the transportation system is a critical consideration in overall security planning. While there are currently no identified high-threat facilities located within the MPO Planning Area, there are several transportation corridors that serve as hurricane evacuation routes. Roadways designated for hurricane evacuations are also considered during the project prioritization process and given additional priority ranking for improvements to ensure mobility along these corridors.



The Lake~Sumter MPO does not have primary responsibility for security issues, although some security issues may have an impact on transportation programs at the regional level. The MPO role in security may take many forms including facilitator, participant, or leader in the security-related activities.

In the event of a man-made or natural disaster, the Lake~Sumter MPO will implement the procedures outlined in the Continuity of Operations Plan (COOP), adopted in 2006 and reviewed and updated annually, and the MPO will coordinate directly with the law enforcement and emergency management officials, such as Sumter County Sheriff's Office and the Lake County Emergency Operation Centers (EOC), when activated.

Freight and Goods Movement

Freight and goods movement continues to be a top priority in the Lake~Sumter region. In Sumter County at the confluence of I-75, Florida's Turnpike Mainline, SR 44 and the CSX S-Line, plans for a large inter-modal industrial/freight center are taking shape. A new interchange is being planned on I-75 at CR 514 to help alleviate project traffic that will be generated by 20 million square feet of entitled industrial land use. The future of US 301 in Sumter County is being planned to accommodate the future employment center.



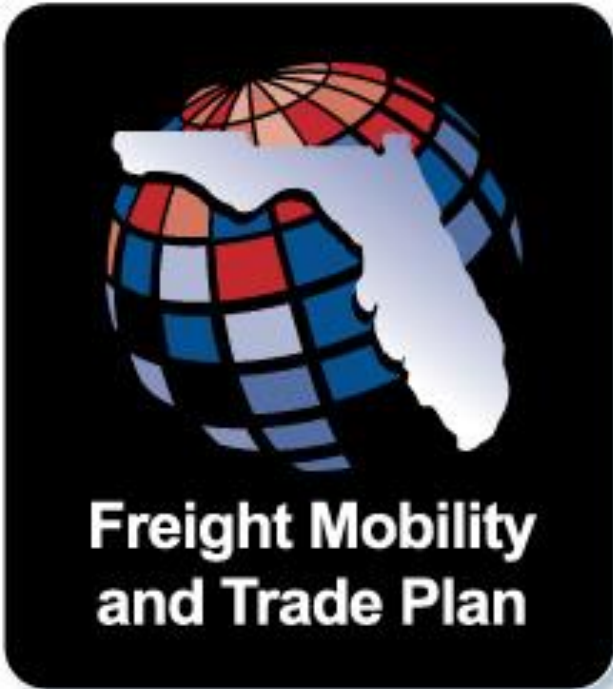
The City of Leesburg's new commerce park offers more than 640 acres of prime development area at Florida's Turnpike and County Road 470. Improvements to the 470 Corridor to accommodate this major economic development project are regional top priority. The 470 Corridor connects Sumter and Lake counties, as well as US 27, Florida's Turnpike, US 301, I-75, the CSX S-Line and SR 44. The county road corridor includes thousands of existing and future jobs and is planned to be added to the state system by 2018.



Parkway project (SR 429 and SR 46).

In eastern Lake County, the Wekiva Parkway project, which will complete the beltway around the Orlando metropolitan area, is stimulation economic development opportunities. Mount Dora has designated the Wolf Branch Innovation District as a future employment center directly accessed by the Wekiva

A new interchange with Florida's Turnpike in Minneola is planned for opening in 2017. The planned employment center around the new interchange is driven by the accessibility to be provided by the enhanced access. A 16,000-acre sector plan area in southeastern Lake County between US 27 in Lake County and SR 429 in Orange County relies on transportation connectivity to catalyze the thousands of jobs planned for the area.



These local initiatives are in direct response to regional changes in rail and truck freight patterns and a growing interest by the two counties in the economic development potential associated with freight and goods movement activities. Consideration of these existing initiatives and other similar projects is reflected in *Transportation 2040* as a result of the MPO's participation in MetroPlan Orlando's 2013 Central Florida Regional Freight Mobility Study (See Map 7). The study provided valuable information on linking goods movement in our region with the region's economy, job creation and future freight related economic opportunities. At the national and state levels, the federal transportation bill, MAP-21 or the Moving Ahead for Progress in the 21st Century Act, was signed into law by President Obama on July, 6 2012, funding surface transportation programs. MAP-21 recommended that states develop state freight plans, including these required

elements to qualify for an increased freight project funding percentage:

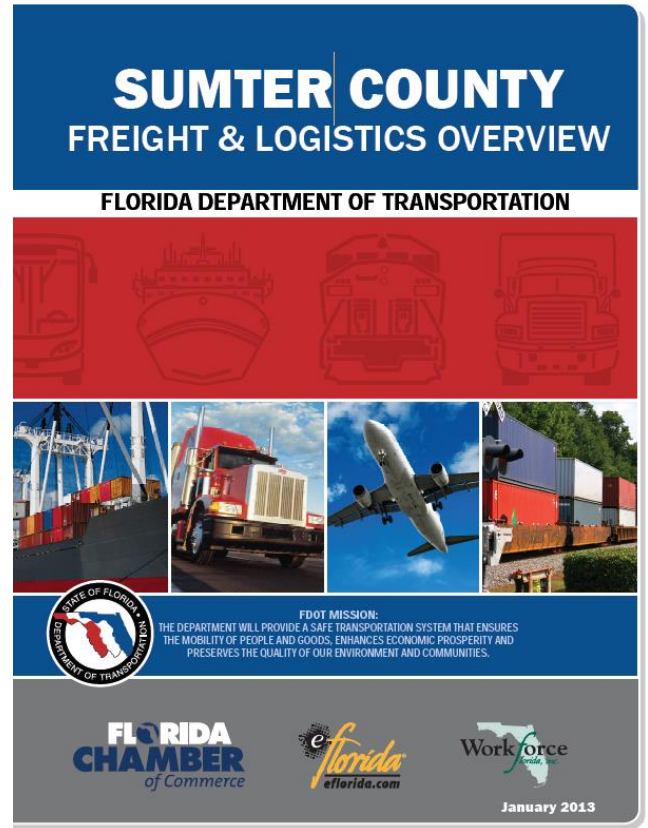
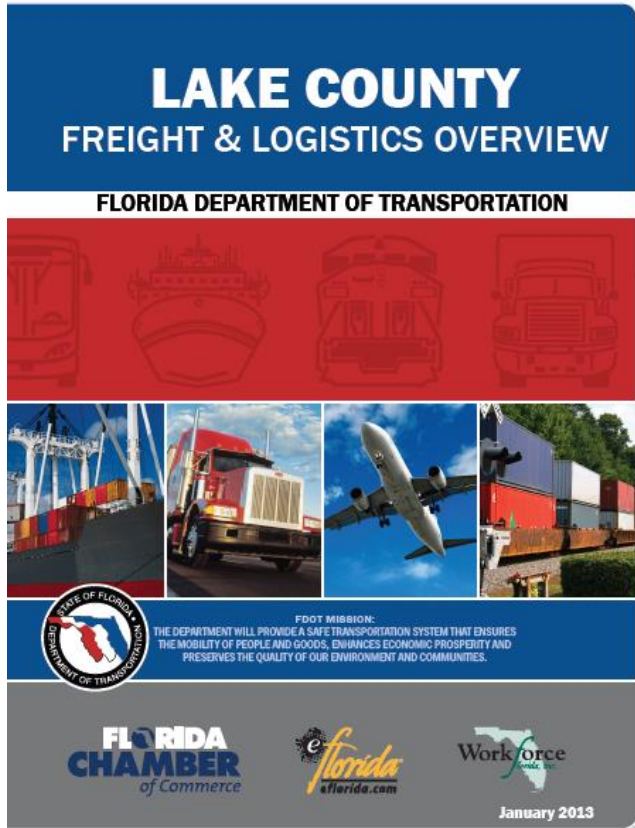
- Identify trends, needs and issues
- Describe policies, strategies and performance measures to guide investment decisions
- Describe how the plan will improve state ability to meet national freight goals
- Consider innovative technologies and operational strategies
- Describe improvements required to reduce deterioration of heavy truck routes
- Provide an inventory of facilities with freight mobility issues and strategies to address those issues.

In response, the State of Florida subsequently developed the *Freight Mobility and Trade Plan* (FMTP). The Florida FMTP provides guidance to the FDOT on freight and goods movement-related policy and investment decisions. The plan informs the state Legislature, private industry, and other governmental agencies on the logistics and trade vision for Florida.

The Policy Element is the foundation of the FMTP, setting objective and strategies developed through a two year outreach to stakeholder groups representing a synthesis of ideas, views and issues of a diverse public. The objectives focus on several areas including: a collaborative effort among economic development, trade, and logistics programs; support of freight movement investments; balancing investments among the different

forms of transportation; increasing operational efficiency of goods movement; and minimizing costs in the supply chain.

The Investment Element of the FMTF details a collaborative and transparent project prioritization process to match funding for short-term and long-term to ensure maximum return on Florida’s investment. It includes a complete assessment of freight infrastructure needs and a prioritization process for determining funding allocation.

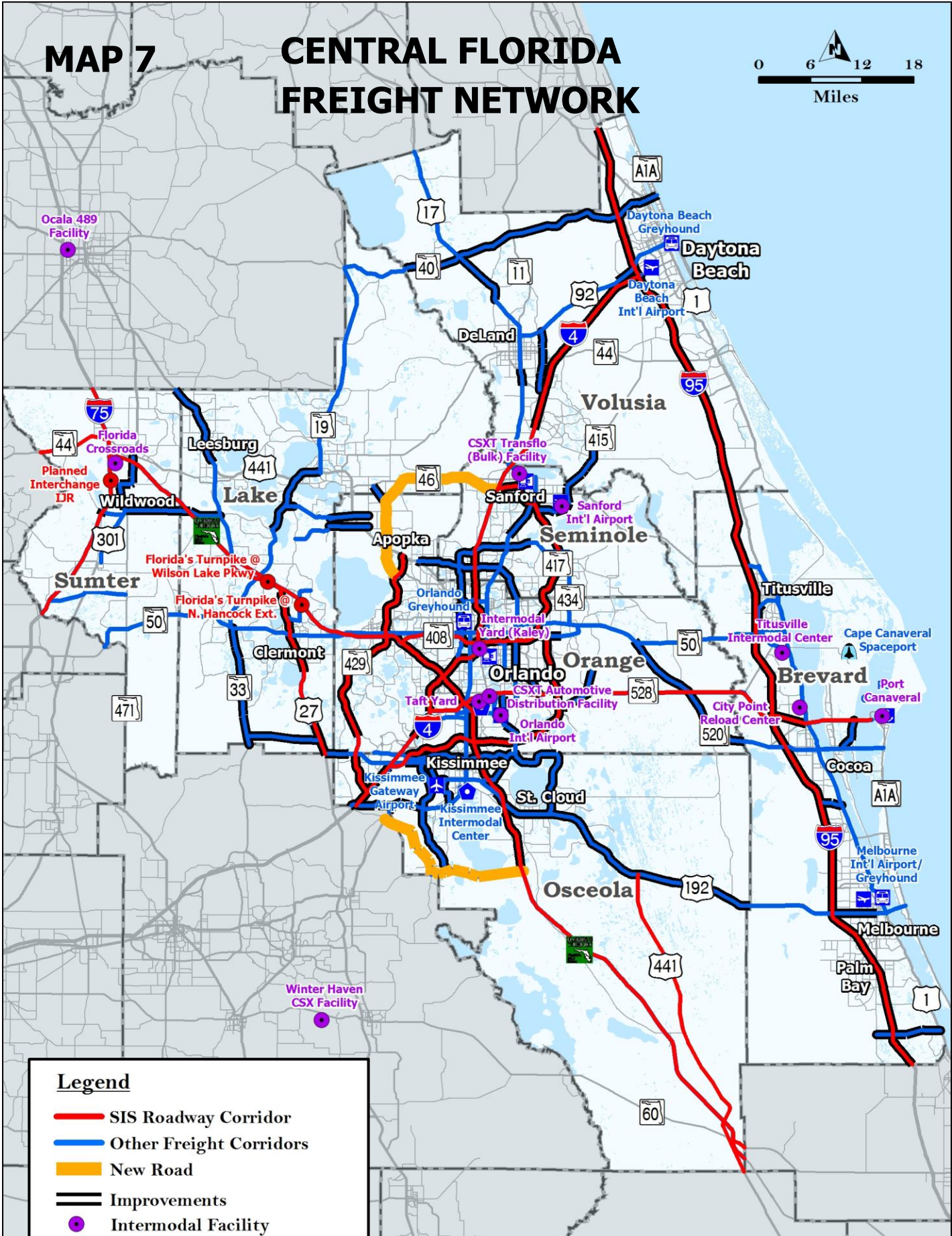


The MPO was an active and enthusiastic participant in the development of the FMTF ensuring the region’s needs and goals were recognized in the state’s plan. As the MPO moves forward with freight planning for the two-county region, it will be done in coordination with FDOT and the FMTF.



MAP 7

CENTRAL FLORIDA FREIGHT NETWORK



Legend

- SIS Roadway Corridor
- Other Freight Corridors
- New Road
- Improvements
- Intermodal Facility
- Interchange Improvement

SOURCE: METROPLAN ORLANDO 2012
CENTRAL FLORIDA REGIONAL FREIGHT AND GOODS MOVEMENT STUDY

Environmental Impacts

Efficient Transportation Decision Making (ETDM) creates a connection between land use, transportation and environmental resource planning through proactive and interactive agency involvement. The purpose of the ETDM process is to improve the efficiency of making transportation decisions by integrating transportation, land use, social, economic and environmental considerations early in the project development process. ETDM affords the opportunity to proactively determine fatal flaws to a planning concept before the study phase of project development.



An ETDM planning screen process is conducted for all major capacity projects prior to their inclusion in the Cost Feasible Plan. A major project is defined as new roadway construction, the addition of lanes to an existing roadway, fixed rail transit construction, public transportation projects, new bridge construction, bridge widening, new interchanges, major interchange modifications, or major capital improvements such as intermodal and transit centers. Proposed capacity projects identified as needs in the MPO's adopted LRTP that have not yet been subject to Project Development and Environment (PD&E) studies are also eligible for the ETDM planning screen process.

As part of the plan development process, MPO staff worked with FDOT District Five to conduct planning screening associated with the ETDM process to better protect the environmentally sensitive areas within our region (See Map 8). This analysis was conducted for roadway and transit projects identified in the cost-feasible plan's list of projects. The planning screen for these projects involves examining:

- Air Quality
- Contaminated Sites
- Farmlands
- Floodplains
- Infrastructure
- Water Quality and Quantity
- Wetlands
- Wildlife Habitat
- Recreation Areas
- Archaeological and Historic Resources
- Socio-cultural Effects

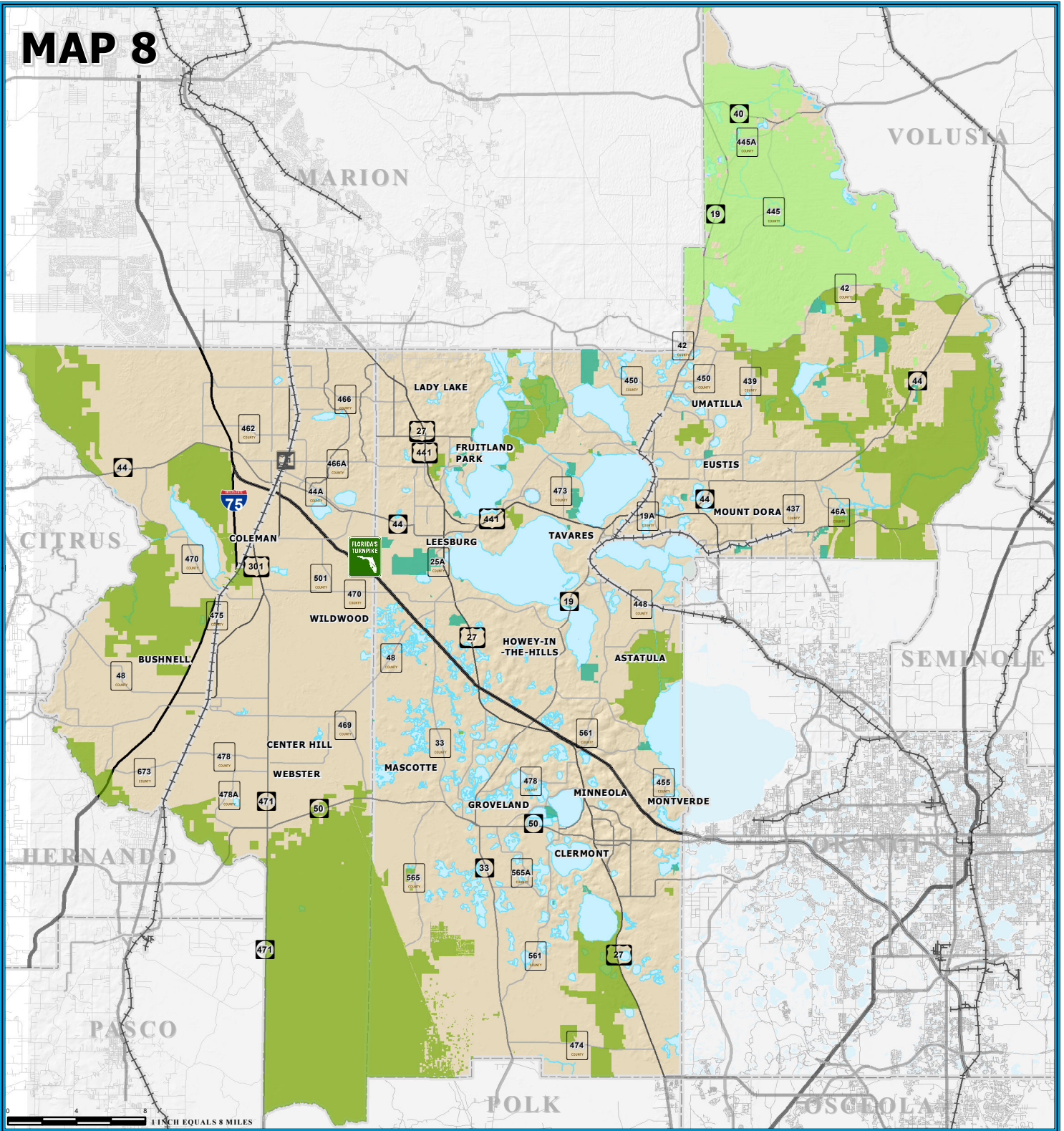
In addition to the ETDM process, the MPO engages in all PD&E studies within the MPO Planning Area. This includes studies of state system facilities as well as local facilities. Through the PD&E study process, environmental impacts are determined and mitigation strategies are outlined as the project is defined. The MPO utilizes the PD&E study process as an opportunity to reinforce that no outcome is predetermined. Although a capacity need may be included in the cost-feasible plan, the concept is not solidified as a project until the PD&E process is complete.



ENVIRONMENTALLY PROTECTED AREAS



MAP 8



LEGEND:

- | | | | | | |
|-------------|--|----------------------------------|--|--|--|
| County Road | | Water Body | | Public Lands Managed by Federal Agency | |
| State Road | | County Delineation | | Public Lands Managed by State Agency | |
| US Highway | | Amtrak Station -Bus Service Only | | Public Lands Managed by Local Agency | |
| Interstate | | Active Railroad | | | |
| Turnpike | | | | | |

MAP COMPOSITION:
SEPTEMBER, 2015



Transportation Needs Analysis

Roadways

The transportation needs analysis began with the establishment of the existing-plus-committed network (E+C) to ensure that all projects identified in the five-year work program and local capital improvement programs were properly coded into the Central Florida Regional Planning Model (CFRPM) version 6.0. These projects represent those anticipated to complete by 2019. Working with the Florida Department of Transportation, the study team then reviewed the CFRPM files against the locally adopted levels of service as identified in the MPO's Transportation Management System (TMS). As a result, the capacities of individual roadways were adjusted based on specific roadway characteristics and physical capacity. Once the base model analysis was complete and future roadway deficiencies identified, the study team began identifying specific projects and alternatives to address these long term needs.

Recognizing the MPO's adopted Constrained Roadways Map (See Map 9), constrained corridors were identified for Alternative Transportation Strategies. The remaining corridors with projected deficiencies were identified for improvements. Additionally, long-term projects identified in the List of Priority Projects (LOPP) not funded in the five-year work program were also added to the list of project needs, reflecting local priorities. This list of projects was vetted through the public outreach process and further refined to reflect the needs plan. This resulting needs assessment focused identifying projects and strategies to:

- Apply Complete Streets methods to develop appropriate transportation improvements for deficient facilities that deliver solutions appropriate for the surrounding community context and while meeting quality of life goals.
- Optimizing regional corridors with management and operations strategies (i.e. intelligent transportation systems (ITS), timing signalization, intersection improvements)
- Strategic widening projects connecting major destinations and addressing future congestion issues.
- Additional roadway connections to disperse traffic more evenly across the network and increase network efficiency that also provide safe bicycle and pedestrian options.

Transit and Intermodal Facility Needs



Overall transit needs across the two-county region focus on efforts to maintain and enhance the accessibility of the transportation system for all users including the young, elderly, the economically-disadvantaged and the disabled. Public transit and para-transit services provide transportation for citizens who typically cannot drive. In addition to this segment of the population, transit is increasingly being seen as a viable option for riders who may have access to an automobile but choose to take transit because it provides a more attractive alternative or supports broader community goals. As such,

Transportation 2040 seeks to enhance and expand transit service as part of its long term multimodal mobility strategy.

A key message of the Lake County Transit Development Plan (TDP) was the need for enhanced coordination between local governments and other agencies to evaluate current demands and to plan for future public transportation needs in Lake County. In particular, it was recognized that the county is currently transitioning from its designation as a rural transit service provider to a small urban designation, and newly designated urbanized areas in South Lake based upon anticipated population increases in the county documented in the 2010 Census.

Proactively addressing the needs of residents and anticipating future demands has been an important part of the implementation strategy over the last year. The recommendations from the Lake County TDP most recent update have been incorporated into *Transportation 2040* to ensure that transportation efforts of all government entities are consistent with the overall transportation goals for the region.

The TDP identifies needed improvements to the existing transit system as well as several expansions that address weekend service, increased hours of operation, and increased frequency. The TDP also identifies the need to commence new service along SR 50 in the South Lake region, a newly designated urbanized area part of the Orlando UA expansion into Lake County. Additionally the plan identifies several corridors where a combination of transit, management and operations, bicycle and pedestrian improvements will be targeted in the future (See Map 10).



Intermodal connectivity between air, rail, vehicles, bicyclists and pedestrians is another factor of MPO planning. This plan incorporates recommendations from the Leesburg Airport Master Plan and the Tavares Seaplane Master Plan.

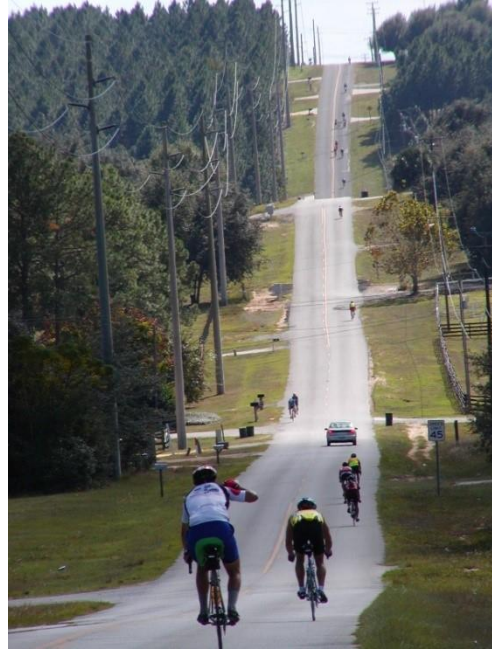
Bicycle and Pedestrian Needs



The transportation needs analysis conducted for *Transportation 2040* identified pedestrian and bicycle facility network needs in the MPO area based on analyzing existing conditions and engaging stakeholders and the public in the planning process. Specific projects and policy recommendations are included in the new *Transportation 2040* Programs Areas developed to serve as a guide to improve the safety and connectivity of walking and biking within the MPO Planning area. The ultimate goal of the Transportation Needs Analysis is to identify a network of sidewalks and bicycle facilities that provide a safe and efficient alternative transportation system. And finally the

Transportation 2040 plan will capitalize on the area’s position within Florida’s rapidly growing trail network by planning for a series of paved multi-use trails that connect to other regional trails in Florida, including the Coast-to-Coast Trail and the Heart Florida Loop. These trails will not only provide greater connectivity and recreational opportunities, but are intended to bring economic benefits to the region as well.

Communities within the MPO planning area are implementing approaches to transportation planning, such as better coordinating land use and transportation; increasing the availability of high-quality transit service; creating redundancy, resiliency and connectivity within their road networks; and ensuring connectivity between pedestrian, bike, transit, and road facilities. This multi-modal approach to transportation with supportive development patterns, helps create a variety of transportation options for the residents and visitors to the region.



of
 new



Lake County joined forces with Bike Walk Central Florida (BWCF) to promote and create safe and courteous roads, trails, and transit ways, where bicycling and walking for transportation and recreation are accessible and a common part of our daily experience, enhancing our physical health and the quality of life in

our community. BWCF promotes walkable and bikeable communities through raising public awareness and advocating for safe, active transportation, and recreation by:

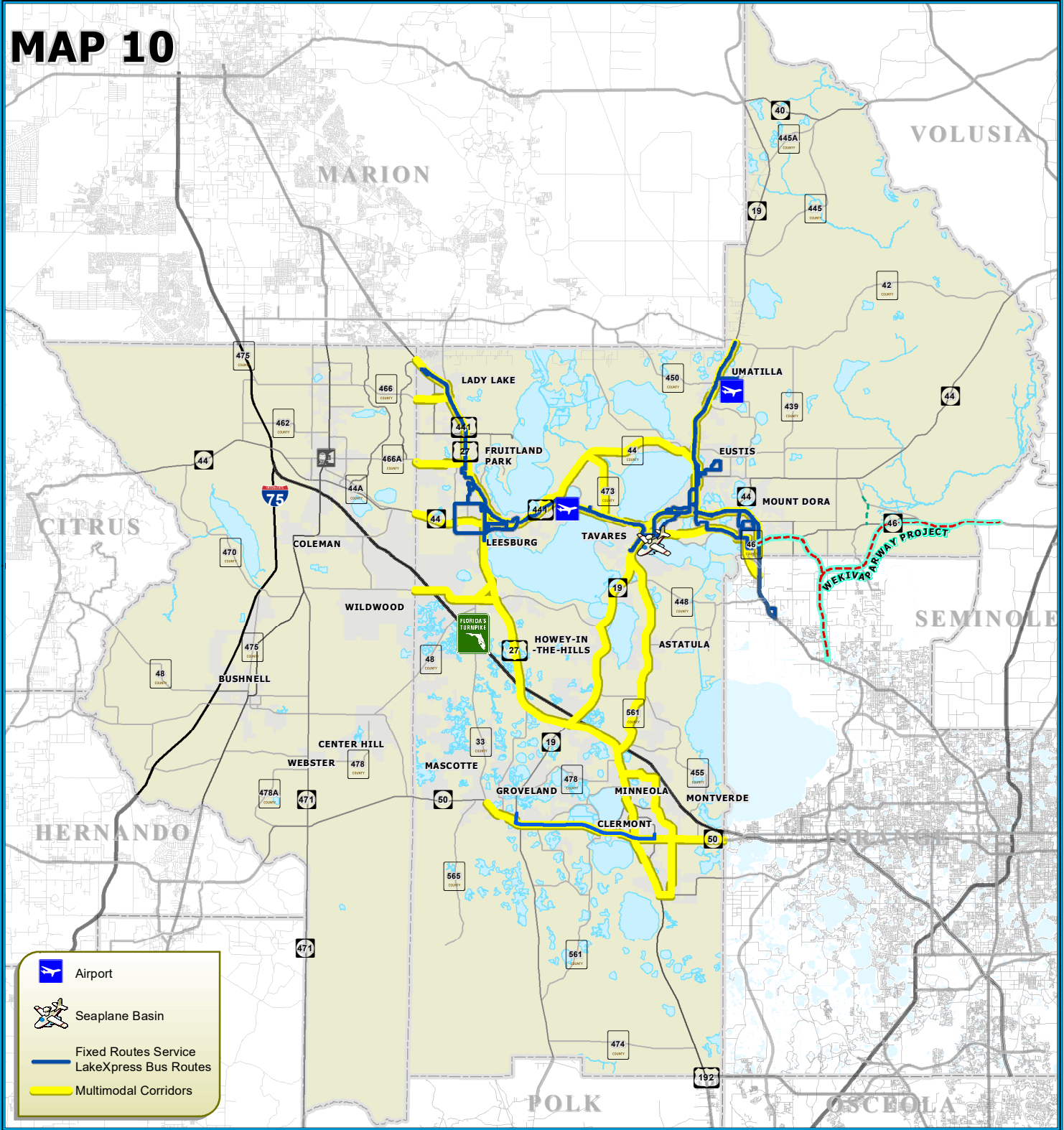
- Educating walkers, cyclists, motorists and transit riders about Florida’s road laws, their rights, responsibilities, and courteous behaviors;
- Supporting transportation corridor planning and design using Complete Streets principles;
- Encouraging the development and maintenance of trails throughout Florida;
- Promoting a built environment that supports physical, environmental and economic health, provides for safe transportation choices, and encourages interaction among citizens of all ages, incomes and abilities.



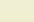
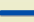



TRANSIT NETWORK NEEDS PLAN











MAP 10



-  Airport
-  Seaplane Basin
-  Fixed Routes Service
-  LakeXpress Bus Routes
-  Multimodal Corridors

LEGEND:

-  County Road
-  State Road
-  US Highway
-  Interstate
-  Turnpike

-  Water Body
-  County Delineation
-  Amtrak Station - Bus Service Only



1 INCH EQUALS 8 MILES

MAP COMPOSITION: SEPTEMBER, 2015



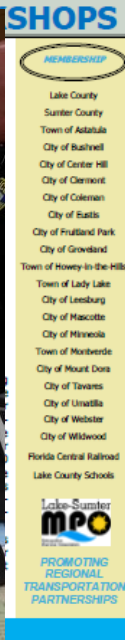
Public Outreach Process

The Lake~Sumter MPO actively seeks and considers public input on transportation policies, plans, and ultimately the prioritization of transportation investments. A major function of the MPO is to ensure that the public (comprised of a diverse constituency of interested and affected parties) maintains a strong voice in the transportation planning process. As part of the MPO planning process for *Transportation 2040*, the MPO implemented a broad public outreach strategy to ensure early and continued involvement in the development of the plan. These outreach efforts provided substantial public input that ultimately shaped the identified policies and projects in the plan.



The MPO used its adopted Public Involvement Plan for *Transportation 2040*. The plan is robust in its guidance and requirements for engaging the public in the MPO Planning Area. The Public Involvement Plan was prepared in accordance with Title 23 Code of Federal Regulations, Section 450.316(b)(1). Opportunities that were available to the public to be involved in all phases of the planning process exceeded the minimum requirements of the law.

The public involvement process had multiple components including the formation of the Long Range Transportation Plan Subcommittee comprised of members from the Citizens' Advisory Committee, Bicycle & Pedestrian Advisory Committee, and Technical Advisory Committee. Presentations and updates were made regularly to the MPO Governing Board, Citizen's Advisory Committee, Bicycle & Pedestrian Advisory Committee, Technical Advisory Committee, Transportation Disadvantaged Coordinating Boards for both Lake County and Sumter County and the MPO Task Forces – South Lake, East Lake, North Lake, CR 470 Corridor, and Public Transportation. Three (3) public workshops were held in various locations throughout the region to present the plan and solicit input from the entire community.



In addition to the workshops, the plan was presented at community outreach events as well as to chambers of commerce, civic organizations, city and town councils, and county commissions. The MPO public involvement mailing list and e-mail list were utilized to inform the public about the workshops and to provide copies of the draft documents and presentation materials. In an effort to promote environmental justice and to meet the requirements of Title VI, special efforts were undertaken to involve population segments that are traditionally underserved and/or represented.

Several communication tools and outreach strategies were utilized throughout the plan development process including visualization techniques, interactive workshop activities, web-based information sharing, multimedia and informational exhibits displaying maps and charts. The various strategies were utilized to effectively convey plan development content and key issues for consideration. Comment cards, flip charts, and hands-on 'mark-ups' of maps were utilized to record community input at each outreach event.



The MPO's website also served as the major information portal for the Transportation 2040 plan development. All of the plan information including workshop handouts, presentations, technical documents, and summaries of comments were made available to the public via the website. Advertisements for public meetings and workshops were posted online and placed in local newspapers. Social media efforts complemented the public involvement efforts by alerting participants to opportunities for input.

This outreach process resulted in the creation of the final goals and objectives and identification of needed projects. The resultant cost-feasible plan was derived from a combination of input received from the public, sound technical analysis and compliance with all federal, state and local regulations.

Alternative Transportation Strategies and Project Needs

As described in the Plan Development section, *Transportation 2040* is organized around five alternative transportation strategies: Roadway Capacity Projects; Complete Streets Program; Regional Trails Program; Safe Schools Emphasis Program; Management and Operations Program; Intelligent Transportation Systems Program; and Sidewalk Program. With these strategies in mind, the plan identified project needs that address long term mobility and economic growth needs.

Roadway Capacity Projects

Transportation 2040 includes a list of strategic capacity improvements, specifically, potential roadway widening, to local roadways, state roads, and Strategic Intermodal System (SIS) facilities.



Most of the capacity projects were identified in *Transportation 2035* as project needs, but have not yet been funded through construction. Also included in the plan are new roadways. Each new roadway project identified as a need provides a key connection to enhance accessibility and to provide connectivity.

Complete Streets Program

Understanding projects adding capacity to the roadway network will never completely meet the capacity needs or solve the mobility issues of the region, more and more consideration is being given to implementing Complete Streets as one way to transform transportation corridors from vehicle dominated roadways into



community-oriented streets that safely and efficiently accommodate all modes of travel, not just motor vehicles. The premise of Complete Streets is that there is a way to maintain quality of life while balancing the mobility needs of the area and accommodating future growth.



SR 44/Dixie Avenue Traffic Calming & Complete Streets Improvements Concept Study



The Florida Department of Transportation has embraced the concept of Complete Streets and issued a policy for Complete Streets on September 14, 2014. The directive in the policy is to routinely plan, design, construct, reconstruct and operate a context sensitive system of Complete Streets. To accomplish this, FDOT is integrating their Complete Streets Policy into all appropriate internal planning, design, construction and operations

manuals and guidelines.

The MPO supports Complete Streets as an alternative transportation strategy to balance quality of life and mobility issues. Following FDOT's lead, the MPO is drafting a Complete Streets Policy for approval by the MPO Governing Board. The policy will include Complete Streets Goals (e.g., economic revitalization, business retention and expansion, and public safety) and Complete Streets Guiding Principles (e.g. integrate land use strategies with transportation goals, create corridors that serve multimodal needs, and enhanced safety). The MPO will coordinate with FDOT to ensure the MPO's policy comports with FDOT's policy. Once adopted,

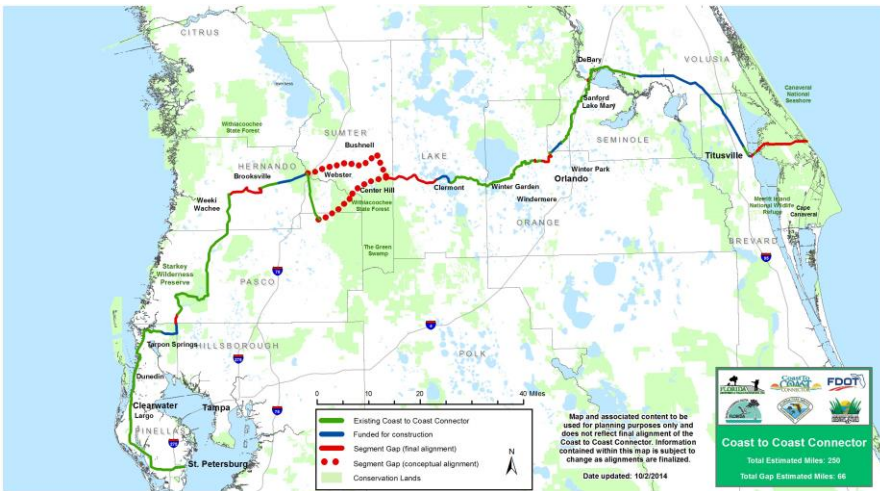
Transportation 2040 will be amended to include the new policy is it as a tool to guide the Complete Streets Program.

Regional Trails Program

The MPO is a strong proponent of a regional trail system. Progress by the MPO on the Central Florida Coast to Coast Connector Trail, the Wekiva Trail, the Heart of Florida Loop and other similar projects is indicative of the MPO’s commitment to the Regional Trails Program as an alternative transportation strategy. The Lake County Trails Master Plan and the South Sumter Connector Trail project are the basis of the MPO’s two-county Regional Trails Program and are the foundation on which the program will build. The program will incorporate existing, planned and conceptual trails and ecological greenways that form a connected, integrated regional network. The Regional Trails Program will serve as a green infrastructure plan



for the region, tying together the greenways and trails plans and planning activities of communities throughout and beyond the MPO Planning Area.



The MPO’s program is consistent with the Florida Greenways and Trails System Plan (See Map 11). The intent of the Regional Trails Program is to provide a long-term vision for bringing a realistic and practical approach to connectivity among schools, parks,

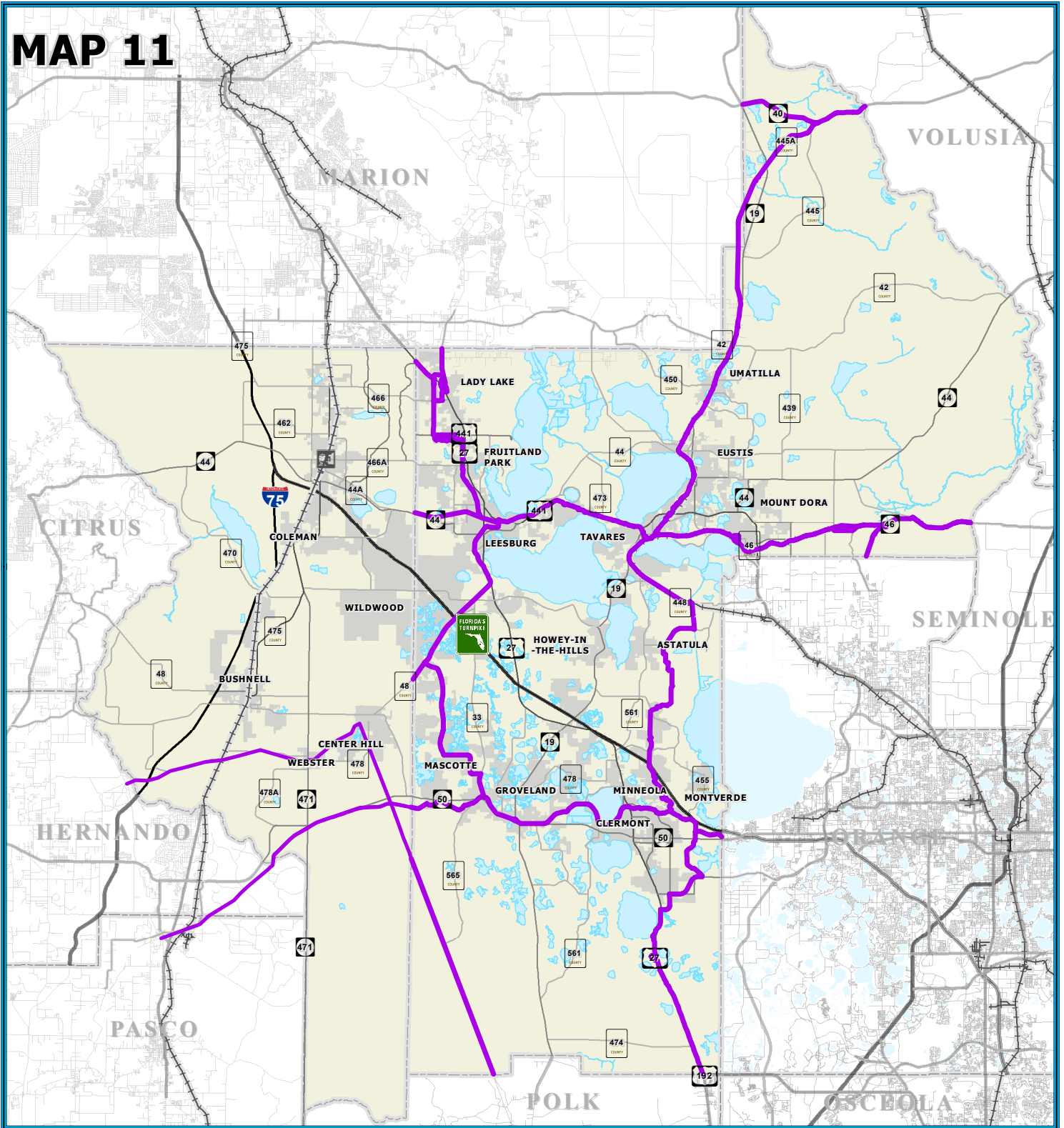
neighborhoods, town centers, libraries, and the surrounding counties. To accomplish this, the MPO will produce policy and guiding principles for incorporation into Transportation 2040. The policy and guiding principles will be developed following adoption of Transportation 2040.



REGIONAL MULTIUSE TRAILS NETWORK



MAP 11



LEGEND: County Road

State Road

US Highway

Interstate

Turnpike

Water Body

County Delineation

Amtrak Station

-Bus Service Only

Active Railroad

Regional Trail Network

MAP COMPOSITION:
SEPTEMBER, 2015



0 4 8
1 INCH EQUALS 8 MILES

Safe Schools Emphasis Program

The MPO received funding from FDOT for the Safe School Access Transportation Study (SSATS) to assess the transportation conditions of each school located within both Lake and Sumter counties. The primary goal of the SSATS was to develop transportation master plans for each school in the study area, focusing on a 10-year planning horizon. The plans were based on data collected and analyzed for each school in the study area, as well as recommendations for improvement for all modes of travel to and from the individual school sites, and within a two-mile radius of each school, which is considered the “walk zone” or the “parent responsibility zone.”



To implement the recommendations made in the SSATS, the MPO is establishing a Safe Schools Emphasis Program. The program will be used to assist the counties and municipalities identify and prioritize the most urgent needs within the two-mile radius, “parent responsibility zone,” for each school. Components of the program will include a Safe Schools Emphasis Policy and Safe Schools Emphasis Guiding Principles that will be incorporated into *Transportation 2040* after Governing Board adoption.

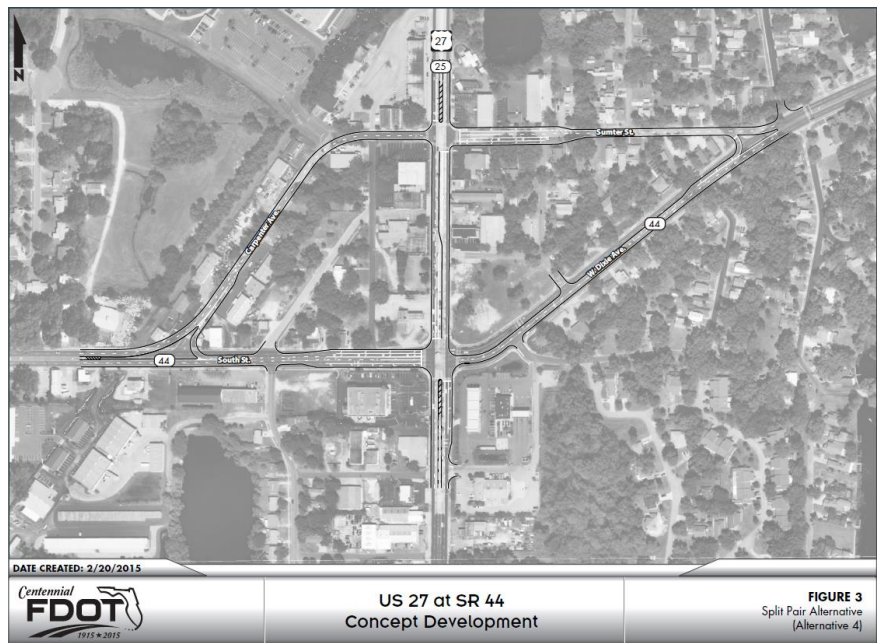
Transportation System Management and Operations (TSM&O) Program



The Federal Highway Administration (FHWA) defines Transportation Systems Management and Operations (TSM&O) as "an integrated program to optimize the performance of existing multimodal infrastructure through implementation of systems, services, and projects to preserve capacity and improve the security, safety, and reliability of our transportation system." FDOT describes it as a program based on

measuring performance, actively managing the multimodal transportation network, and delivering positive safety and mobility outcomes to the travelling public in Florida.

The MPO has embraced the need to look beyond capacity improvements – there will never be enough funding available to meet all needs nor does the community vision support road widening in many situations. Just as the Complete Streets Program will address situations where road widening is not an option for congestion relief, the TSM&O Program will provide the means to mitigate congestion, reduce travel demand and optimize capacity on the existing transportation system. Examples of TSM&O strategies are Intelligent Transportation Systems (*e.g.*, traveler information, transit signal priority); Active Traffic Management (*e.g.*, variable speed





signage); Incident Management; and Event Management. The MPO will develop a TSM&O Program, Policy, and Guiding Principles that are complimentary to FHWA and FDOT definition of TSM&O. Once developed and adopted by the MPO Governing Board, *Transportation 2040* will be amended to include the TSM&O Program, Policy, and Guiding Principles.

Intelligent Transportation Systems (ITS) Program

Building on the TSM&O efforts, Intelligent Transportation Systems utilize technology as a means to create additional capacity within existing infrastructure. Understanding that additional roadway capacity (expanded facilities or new facilities) is not always the most feasible approach to address traffic congestion challenges,



the MPO will develop an Intelligent Transportation Systems (ITS) policy in a continued effort to better enhance the region's existing transportation infrastructure and to get a better return on transportation investments. The shift toward TSM&O and ITS is due to increasing travel demands, significant number of constrained roadways, high construction costs, and environmental and community impacts. ITS has moved to the forefront of transportation planning, focusing on making the existing transportation system more efficient and responsive to drivers instead of making high-cost major road capacity enhancements. ITS applies of a combination of advanced technologies, robust planning, improved preparedness, and extensive coordination to improve the safety, mobility and reliability of the surface transportation network and transit system. Examples of ITS approaches applicable to the MPO's efforts include traffic signal interconnectivity and synchronization, signal preemption to provide priority to emergency vehicles and to transit vehicles, variable message boards and

variable speed limit signs adaptive to traffic conditions, camera monitoring of traffic conditions and real-time adaptive signal timing to respond to changes in traffic conditions.

Strategic themes to the MPO ITS plan, which set the direction, including priorities, are meant to focus the attention on intended outcomes. These themes could:

- enable safer vehicles and roadways;
- enable mobility;
- limit environmental impacts;
- promote innovation; and/or
- support transportation system information sharing.

Sidewalk Program

The MPO will establish a sidewalk program to address those pedestrian needs that are not covered by one or more of the other programs. The program will be designed to address sidewalk needs in high pedestrian traffic areas that do not require a Complete Streets study or are not within the two-mile “parent responsibility zone” of the Safe School Emphasis Program. While there may be overlap of the Sidewalk Program, Complete Streets Program, and Safe School Emphasis Program, the main purpose of this separate program is to be prepared for all funding opportunities that may become available. Having a Program, Policy, and Guiding Principles will ensure



readiness for any funding opportunity. Once adopted by the MPO Governing Board, *Transportation 2040* will be amended to include these Programs, Policies and Guiding Principles.



Cost Feasible Elements

Distinct from the constrained needs plan, the cost feasible plan elements identify those project priorities that can likely be funded over the next 25 years given available revenues.

The following pages include tables and map (See Table 1 – Table 6 and Map 12) illustrating the cost feasible plan projects. The cost feasible projects list represents the next round of projects that are likely to move into the local Capital Improvement Plans (CIPs) and the five year Transportation Improvement Plan (TIP) and are also consistent with the List of Priority Projects (LOPP).

Unfunded Needs

The long term strategies for addressing unfunded transportation needs include:

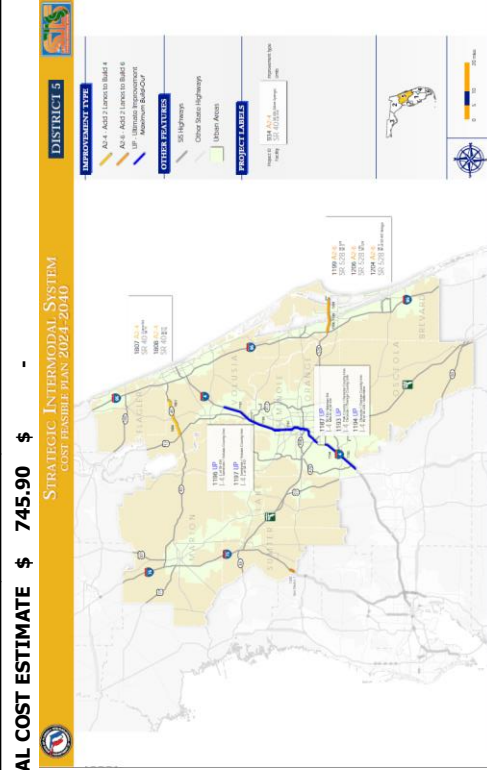
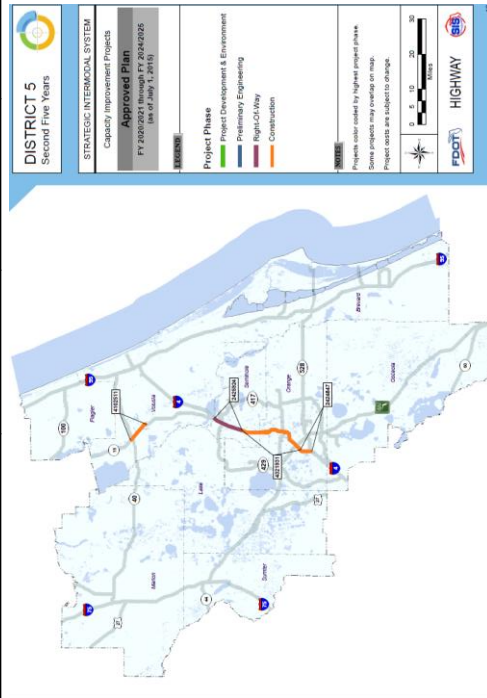
- Continued coordination with member jurisdictions to seek public-private partnerships to fund future roadway, transit and bicycle and pedestrian needs associated with new growth plans.
- Continued emphasis on exploring creative funding strategies and approaches to increase local revenues for transportation funding.
- Continued coordination with member jurisdictions on coordinated land use and transportation planning to encourage non-vehicular modes of travel.

LAKE~SUMTER MPO - DRAFT COST FEASIBLE PROJECTS

TABLE 1 - STATE PROJECTS (STRATEGIC INTERMODAL SYSTEM / FLORIDA'S TURNPIKE / CENTRAL FLORIDA EXPRESSWAY AUTHORITY)

Facility	From	To	Project	Current Year Cost Estimates	Funded Phases			Unfunded Phases
					2021 - 2025	2026 - 2030	2031 - 2040	
I-75 & CR 514	NEW INTERCHANGE	SIS	NEW INTERCHANGE	\$ 58.2				
US 27/SR 25	CR 561 SOUTH	SIS	WIDEN ROAD (4 TO 6 LANES)	\$ 50.9				
US27 & SR19	INTERCHANGE	SIS	IMPROVEMENTS	\$ 29.1				
SR 91/FLORIDA'S TURNPIKE & US 301	INTERCHANGE	FLORIDA'S TURNPIKE	IMPROVEMENTS	\$ 29.1				
SR 91/FLORIDA'S TURNPIKE	MINNEOLA INTERCHANGE	SIS	WIDEN ROAD (4 TO 8 LANES)	\$ 100.9				
SR 91/FLORIDA'S TURNPIKE	SUMTER COUNTY LINE	SIS	WIDEN ROAD (4 TO 8 LANES)	\$ 315.2				
SR 91/FLORIDA'S TURNPIKE	LAKE COUNTY LINE	SIS	WIDEN ROAD (4 TO 8 LANES)	\$ 128.5				
SR 91/FLORIDA'S TURNPIKE	US 301	SIS	WIDEN ROAD (4 TO 6 LANES)	\$ 34.0				
CENTRAL FLORIDA EXPRESSWAY AUTHORITY	US 301	SIS	WIDEN ROAD (4 TO 6 LANES)	\$ -				

TABLE WILL BE COMPLETED UPON ADOPTION OF FDOT SIS / TURNPIKE AND CFX PLANS



TOTAL COST ESTIMATE \$ 745.90 \$ -

TABLE 2 - OTHER ARTERIAL (STATE / FEDERAL FUNDS)

Facility	From	To	County	Project	Current Year Cost Estimates	Year of Expenditure Cost Estimates	Funded Phases	2021 - 2025	2026 - 2030	2031 - 2040	Unfunded Phases
US 301 & C-472	INTERSECTION	0	SUMTER	SIGNAL/INTERSECTION IMPROVEMENTS	\$ 2.1	\$ 2.4	PD&E	PE / ROW / CST	-	-	-
SR 44	ORANGE AVENUE	US 441	LAKE	WIDEN ROAD (2 TO 4 LANES)	\$ 18.5	\$ 22.2	PD&E / PE / ROW	CST	-	-	-
SR 50/SR 33	CR 565 (VILLA CITY ROAD)	BROWN STREET	LAKE	NEW 4 LANE ROAD	\$ 33.8	\$ 41.7	PD&E / PE	ROW	CST	-	-
US 301/SR 35	SR 44	C-470 W	SUMTER	WIDEN ROAD (2 TO 4 LANES)	\$ 51.1	\$ 87.3	PD&E / PE	ROW	-	CST	-
US 301 & CR 525E	INTERSECTION	0	SUMTER	SIGNAL/INTERSECTION IMPROVEMENTS	\$ 1.9	\$ 2.2	PD&E / ROW	PE / CST	-	-	-
US 441	SR 44	SR 46	LAKE	WIDEN ROAD (4 TO 6 LANES)	\$ 14.6	\$ 20.7	PD&E / PE	ROW	CST	-	-
C-470	TURNPIKE WEST RAMPS	CR 527	SUMTER	WIDEN ROAD (2 TO 4 LANES)	\$ 45.5	\$ 76.8	PD&E	PE / ROW / CST	-	CST	-
CR 470	TP WEST RAMPS	CR 33	LAKE	WIDEN ROAD (2 TO 4 LANES)	\$ 18.4	\$ 26.9	PD&E / ROW	ROW	CST	-	-
SR 44 & US 27	INTERSECTION	0	LAKE	UPGRADE INTERSECTION	\$ 2.1	\$ 2.5	PD&E / PE / ROW	CST	-	-	-
US 441/SR 500	PERKINS STREET	SR 44	LAKE	WIDEN ROAD (4 TO 6 LANES)	\$ 8.7	\$ 16.1	PD&E / PE / ROW	-	-	CST	-
CR 48	EAST OF US 27 (PALATLAKAHIA BRIDGE)	CR 33	LAKE	WIDEN ROAD (2 TO 4 LANES)	\$ 6.3	\$ 1.3	PD&E / PE / ROW	-	ROW	-	CST
SR 19	CR 561	CR 48	LAKE	WIDEN ROAD (2 TO 4 LANES)	\$ 41.7	\$ -	PD&E / PE	-	-	-	ROW / CST
SR 50	HERNANDO CO	CR 33	SUMTER	CORRIDOR IMPROVEMENT	\$ 33.7	\$ -	None	-	-	-	PD&E / PE / ROW / CST
LAKE ORANGE PARKWAY	US 27	ORANGE COUNTY LINE	LAKE	NEW 4 LANE ROAD	\$ 85.5	\$ -	None	-	-	-	PD & E / PE / ROW / CST
SR 44	SR 44 & ORANGE AVENUE	CR 46A	LAKE	WIDEN ROAD (2 TO 4 LANES)	\$ 8.1	\$ -	None	-	-	-	PD & E / PE / ROW / CST
SR 19	SR 50	CR 455	LAKE	WIDEN ROAD (2 TO 4 LANES)	\$ 62.5	\$ -	None	-	-	-	PD & E / PE / ROW / CST
Total					\$ 202.75	\$ 300.16					
Other Arterial Funds					\$	\$					
Balance (+ / -)					\$	\$					

(PROJECTS THAT ARE COST FEASIBLE BY 2040)

OCTOBER 14 DRAFT Page Number	NOVEMBER 18 DRAFT Page Number	CHANGE
8	11	ADDED: OBJECTIVE – Invest in Intelligent Transportation Systems (ITS) as an alternative to adding roadway capacity
10	16	ADDED: Table 1 - Population and Employment Estimates
14	24	<p>ADDED: These local initiatives are in direct response to regional changes in rail and truck freight patterns and a growing interest by the two counties in the economic development potential associated with freight and goods movement activities. Consideration of these existing initiatives and other similar projects is reflected in Transportation 2040 as a result of the MPO's participation in MetroPlan Orlando's 2013 Central Florida Regional Freight Mobility Study (See Map 7). The study provided valuable information on linking goods movement in our region with the region's economy, job creation and future freight related economic opportunities. At the national and state levels, the federal transportation bill, MAP-21 or the Moving Ahead for Progress in the 21st Century Act, was signed into law by President Obama on July, 6 2012, funding surface transportation programs. MAP-21 recommended that states develop state freight plans, including these required elements to qualify for an increased freight project funding percentage:</p> <ul style="list-style-type: none"> • Identify trends, needs and issues • Describe policies, strategies and performance measures to guide investment decisions • Describe how the plan will improve state ability to meet national freight goals • Consider innovative technologies and operational strategies • Describe improvements required to reduce deterioration of heavy truck routes • Provide an inventory of facilities with freight mobility issues and strategies to address those issues. <p>In response, the State of Florida subsequently developed the Freight Mobility and Trade Plan (FMTP). The Florida FMTP provides guidance to the FDOT on freight and goods movement-related policy and investment decisions. The plan informs the state Legislature, private industry, and other governmental agencies on the logistics and trade vision for Florida.</p> <p>The Policy Element is the foundation of the FMTP, setting objective and strategies developed through a two year outreach to stakeholder groups representing a synthesis of ideas, views and issues of a diverse public. The objectives focus on several areas including: a collaborative effort among economic development, trade, and logistics programs; support of freight movement investments; balancing investments among the different forms of transportation; increasing operational efficiency of goods movement; and minimizing costs in the supply chain.</p> <p>The Investment Element of the FMTP details a collaborative and transparent project prioritization process to match funding for short-term and long-term to ensure maximum return on Florida's investment. It includes a complete assessment of freight infrastructure needs and a prioritization process for determining funding allocation. The MPO was an active and enthusiastic participant in the development of the FMTP ensuring the region's needs and goals were recognized in the state's plan. As the MPO moves forward with freight planning for the two-county region, it will be done in coordination with FDOT and the FMTP.</p>
16	33	<p>ADDED: <i>Bicycle and Pedestrian Needs</i></p> <p>The transportation needs analysis conducted for <i>Transportation 2040</i> identified pedestrian and bicycle facility network needs in the MPO area based on analyzing existing conditions and engaging stakeholders and the public in the planning process. Specific projects and policy recommendations are included in the new <i>Transportation 2040</i> Programs Areas developed to serve as a guide to improve the safety and connectivity of walking and biking within the MPO Planning area. The ultimate goal of the Transportation Needs Analysis is to identify a network of sidewalks and bicycle facilities that provide a safe and efficient alternative transportation system. And finally the Transportation 2040 plan will capitalize on the area's position within Florida's rapidly growing trail network by planning for a series of paved multi-use trails that connect to other regional trails in Florida, including the Coast-to-Coast Trail and the Heart of Florida Loop. These trails will not only provide greater connectivity and recreational odging percentage:</p> <ul style="list-style-type: none"> • Identify trends, needs and issues <p>Communities within the MPO planning area are implementing new approaches to transportation planning, such as better coordinating land use and transportation; increasing the availability of high-quality transit service; creating redundancy, resiliency and connectivity within their road networks; and ensuring connectivity between pedestrian, bike, transit, and road facilities. This multi-modal approach to transportation with supportive development patterns, helps create a variety of transportation options for the residents and visitors to the region.</p> <p>Lake County joined forces with Bike Walk Central Florida (BWCF) to promote and create safe and courteous roads, trails, and transit ways, where bicycling and walking for transportation and recreation are accessible and a common part of our daily experience, enhancing our physical health and the quality of life in our community. BWCF promotes walkable and bikeable communities through raising public awareness and advocating for safe, active transportation, and recreation by:</p> <ul style="list-style-type: none"> § Educating walkers, cyclists, motorists and transit riders about Florida's road laws, their rights, responsibilities, and courteous behaviors; § Supporting transportation corridor planning and design using Complete Streets principles; § Encouraging the development and maintenance of trails throughout Florida; § Promoting a built environment that supports physical, environmental and economic health, provides for safe transportation choices, and encourages interaction among citizens of all ages, incomes and abilities.

21	46	<p>ADDED: <i>Intelligent Transportation Systems (ITS) Program</i></p> <p>Building on the TSM&O efforts, Intelligent Transportation Systems utilize technology as a means to create additional capacity within existing infrastructure. Understanding that additional roadway capacity (expanded facilities or new facilities) is not always the most feasible approach to address traffic congestion challenges, the MPO will develop an Intelligent Transportation Systems (ITS) policy in a continued effort to better enhance the region's existing transportation infrastructure and to get a better return on transportation investments. The shift toward TSM&O and ITS is due to increasing travel demands, significant number of constrained roadways, high construction costs, and environmental and community impacts. ITS has moved to the forefront of transportation planning, focusing on making the existing transportation system more efficient and responsive to drivers instead of making high-cost major road capacity enhancements. ITS applies of a combination of advanced technologies, robust planning, improved preparedness, and extensive coordination to improve the safety, mobility and reliability of the surface transportation network and transit system. Examples of ITS approaches applicable to the MPO's efforts include traffic signal interconnectivity and synchronization, signal preemption to provide priority to emergency vehicles and to transit vehicles, variable message boards and variable speed limit signs adaptive to traffic conditions, camera monitoring of traffic conditions and real-time adaptive signal timing to respond to changes in traffic conditions.</p> <p>Strategic themes to the MPO ITS plan, which set the direction, including priorities, are meant to focus the attention on intended outcomes. These themes could:</p> <ul style="list-style-type: none"> • enable safer vehicles and roadways; • enable mobility; • limit environmental impacts; • promote innovation; and/or • support transportation system information sharing.
25	51	ADDED: Intelligent Transportation Systems (ITS) Program to Cost Feasible Table 3; Changed Cost Feasible Table numbering.



Lake~Sumter Metropolitan Planning Organization Draft 2016 Legislative Priorities

Presented to Governing Board October 28, 2015

- 1. Restore Funding for the Transportation Regional Incentive Program (TRIP)**
- 2. Support Continued Funding for the Central Florida Coast-to-Coast Trail and Other Regional Trail Projects such as the Heart of Florida Loop**
- 3. Enhance and Protect the State Transportation Trust Fund and the Transportation Disadvantaged Trust Fund**
- 4. Reexamine Legislation to Strengthen Laws to Protect Bicyclists and Pedestrians**
- 5. Establish as a Primary Offense the Use of Electronic Wireless Devices While Driving**



Lake~Sumter Metropolitan Planning Organization Draft 2016 Legislative Positions

Presented to Committees November 18 & 19, 2015

STATEWIDE TRANSPORTATION FUNDING

1. Support Continued Funding for the Central Florida Coast-to-Coast Trail and Other Regional Trail Projects such as the Heart of Florida Loop

The Development of the Coast to Coast Connector, the Heart of Florida Loop and other trails of statewide significance will provide an international attraction for ecotourism. Great momentum is underway in the closing of gaps in the Coast to Coast Trail between existing trails from Brevard County to Pinellas County. The largest gap is in southern Sumter County and Lake County.

2. Restore Funding for the Transportation Regional Incentive Program (TRIP)

Since created by legislation in 2006, the Transportation Regional Incentive Program has effectively catalyzed regional transportation planning and the development of regional transportation projects. However, the TRIP has only been effective when fully funded. The 50 percent of state matching grant funding has attracted considerable investment by local governments and by the private sector for regional transportation projects like roadway projects connecting counties.

3. Index Local Option Fuel Taxes

The State of Florida long ago passed legislation to index state fuel taxes according to the Consumer Price Index. State gas taxes increase in Florida each year at a reasonable rate due to this indexing. Legislation is needed to provide the same annual indexing for local option fuel taxes. Fuel tax revenues for local projects have been affected by decreases in fuel consumption and a flattening of the revenue stream. Indexing would allow a more dependable revenue source for local transportation projects.

4. Enhance and Protect the State Transportation Trust Fund

State transportation dollars are integral to catalyzing economic growth throughout the state. Diversions of trust fund dollars have long-term impacts on Florida's economy and create opportunity costs for economic development. Allow the trust fund to be a dependable source for vitally-needed transportation infrastructure.

5. Enhance and Protect the Transportation Disadvantaged Trust Fund

The Transportation Disadvantaged Trust Fund provides Florida's most vulnerable population access to medical services, nutrition, jobs and educational opportunities. With state-mandated changes in the coordinated system forthcoming regarding Medicaid trips, Florida counties have challenges ahead that will be exacerbated by funding diversions.

6. Establish as a Primary Offense the Use of Electronic Wireless Devices While Driving

Currently a secondary offense, the use of electronic wireless devices while driving leads to distracted drivers who may be manually texting, emailing, messaging, or utilizing the device without the hands-free feature. Bills increasing the penalty have been introduced in 2014 and 2015. The strengthening of the 2013 "Florida Ban on Texting While Driving Law" by establishing the violation as a primary offense would lead to stronger enforcement.

REGIONAL PROJECTS

1. Lake County CR 466A, Phase 3, Widening in Fruitland Park (Lake County)

The east-west regionally-significant county road connects The Villages east through Fruitland Park to US 27/441. Widening to four lanes has advanced such that two phases are now funded for construction. State funding is sought for the final phase, which is less than two miles in length.

2. Citrus Grove Road Widening in Minneola (Lake County)

With the Minneola Interchange project moving forward, Florida's Turnpike in 2017 will see the opening of a new connection in South Lake. Citrus Grove Road is a planned four-lane east-west connection between the new interchange and US 27. Design of the roadway is moving forward. Funding for right-of-way and construction is needed.

3. Wekiva Trail (Mount Dora and Lake County)

With study underway and design to begin in 2016, funding for right-of-way and construction is needed in order to connect downtown Mount Dora to the Coast to Coast Connector Trail in both Seminole and Orange counties.

4. North Lake Trail (Umatilla and Lake County)

Funding is needed for a study of the concept to connect Umatilla north parallel to SR 19 to the future Black Bear Scenic Trail planned along the SR 40 corridor through the Ocala National Forest. The project would be an eco-tourism opportunity for Umatilla and northern Lake County.

5. Sorrento Avenue (SR 46) Complete Streets Project (Lake County)

Before SR 46 is transferred to Lake County following the completion of the Wekiva Parkway project, improvements to the corridor are needed to enhance the roadway as a main street for the Mount Plymouth/Sorrento community. \$5 million in funding is the estimated need.

STATEWIDE POLICY

1. Against Legislation that Requires Local Governments and Their Taxpayers to Pay Costs to Relocate Equipment Belonging to Utilities

Local governments should not be mandated to cover equipment relocation costs for utilities not part of the local government to relocate from rights-of-way or easements upon, over, under or along a roadway.

- 2. Amend Statute: Charter County and Regional Transportation System Surtax**
The current legislation allows an up-to-one-percent surtax, or sales tax, to be taken before voters as a referendum to fund transportation projects. The law has evolved through the last 25 years for the voter-enabled surtax to now be eligible to all 24 charter counties, as well as to any non-charter county that is part of a Regional Transportation Authority, resulting in 33 eligible urban counties. The transportation surtax is an appropriate referendum option for all Florida urban counties and, as a matter of statewide equity, should be extended to all urban counties served by a metropolitan planning organization. This would raise the number of eligible counties to approximately 40, including Lake and Sumter counties. The position has been supported by the Florida Association of Counties. The Florida League of Cities has supported a bill that would expand eligibility to municipalities with a population of at least 150,000.
- 3. Maintain Weight Limits for Commercial Trucks on State Facilities and Monitor Truck Lengths**
In 2010, the Florida Legislature raised truck weight limits on state roads from 80,000 to 88,000 pounds. Nationwide, "pilot projects" continue to push the envelope in terms of allowable weights on state and federal roads, with some states allowing 97,000 to potentially as much as 110,000 pound truck weights – this is without the provision of additional funding to mitigate the impacts of heavier vehicles on roads and especially bridges. MPO supports maintaining the current weight limits and encourages an assessment of fiscal impact of the recent increase in allowable truck weights. In addition, double-trailer and triple-trailer trucks are becoming more common on major highways such as interstate highways and Florida's Turnpike. Additional regulations may be needed to limit the use of or prohibit such trucks on certain state and local roadways.
- 4. Transportation Related Legislation**
With the removal of state-mandated transportation concurrency, the MPO supports legislation that strengthens home-rule rights of local governments regarding regional transportation partnerships and empowers local governments with funding and financing options.
- 5. Reexamine Legislation to Strengthen Laws to Protect Bicyclists and Pedestrians**
Building on the announcement of the "Complete Streets Policy" adoption by FDOT, the Florida Legislature should reexamine legislation to address the Sunshine State's #1 ranking in the "Dangerous by Design" report. Florida has been #1 in bicycle and pedestrian fatalities for too long. The legislature should rewrite laws to reduce and eliminate Florida's bicycle and pedestrian fatalities.

LAKE~SUMTER METROPOLITAN PLANNING ORGANIZATION

RESOLUTION 2015 – ()

A RESOLUTION OF THE LAKE~SUMTER METROPOLITAN PLANNING ORGANIZATION (MPO), AMENDING THE FY 2015/16-2019/20 TRANSPORTATION IMPROVEMENT PROGRAM (TIP) AND AUTHORIZING THE SUBMITTAL OF THE AMENDED FY 2015/16-2019/20 TIP TO THE APPROPRIATE AGENCIES.

WHEREAS, the Lake~Sumter Metropolitan Planning Organization (MPO) is the duly designated and constituted body responsible for carrying out the urban transportation planning and programming process for the Lake-Sumter Planning Area; and

WHEREAS, Florida Statutes 339.175, 23 U.S.C. 134, and Title 49 U.S.C. require that the MPO, as a condition to receiving federal capital or operating assistance, has a continuing, cooperative, and comprehensive transportation planning process that results in plans and programs consistent with the approved comprehensive plans of the units of local government within the MPO's jurisdiction, and with state and local planned growth and economic development patterns; and

WHEREAS, 23 C.F.R 450.324 provides that the Lake~Sumter MPO shall develop a Transportation Improvement Program (TIP) for the metropolitan planning area, and 23 C.F.R. 450.326 allows an MPO to revise the TIP at any time under procedures agreed to by the cooperating parties and consistent with 23 C.F.R. 450.326; and

WHEREAS, the FY 2015/16-2019/20 TIP was adopted by the MPO on June 10, 2015 based on programmed projects in the Florida Department of Transportation (FDOT) Five Year Work Program; and

WHEREAS, the FY 2015/16-2019/20 TIP was amended by the MPO on September 23, 2015 in order to achieve consistency and address roll-forward funds and adjustments to the FDOT Work Program; to add, as an Appendix, Lake County's FY 2015/16-2019/20 Transportation Construction Program and Sumter County's FY 2015/16-2019/20 Capital Improvement Plan; and to address comments from the Federal Highway Administration (FHWA) by further elaborating on the MPO's public involvement process in developing and amending the TIP, and on regionally significant projects included in the TIP; and

WHEREAS, \$2,577,481 is programmed into the FDOT Work Program in FY 2015/16 toward Right-of-Way; \$1,622,982 is programmed into the FDOT Work Program in FY 2015/16 toward Construction; \$7,105,600 is programmed into the FDOT Work Program in FY 2016/17 toward Right-of-Way; \$47,506,628 is programmed into the FDOT Work Program in FY 2016/17 toward Construction; \$6,555,444 is programmed into the FDOT Work Program in FY 2017/18 toward Right-of-Way; \$6,128,734 is programmed into the FDOT Work Program in FY 2018/19 toward Right-of-Way; and \$73,741 is programmed into the FDOT Work Program in FY 2019/20 toward Construction for the widening of SR 46/US 441, from west of US 441 to east of Vista View Lane in Lake County; and

WHEREAS, \$112,406 is programmed into the FDOT Work Program in FY 2015/16 toward Preliminary Engineering; and \$351,836 is programmed into the FDOT Work Program in FY 2017/18 toward Construction for paved shoulders on C-470, from CR 439 to SR 44 in Sumter County; and

WHEREAS, \$170,681 is programmed into the FDOT Work Program in FY 2015/16 toward Preliminary Engineering; and \$605,809 is programmed into the FDOT Work Program in FY 2017/18 toward Construction for paved shoulders on CR 475, from SR 44 to the Marion County Line in Sumter County; and

WHEREAS, \$134,263 is programmed into the FDOT Work Program in FY 2015/16 toward Preliminary Engineering; and \$535,307 is programmed into the FDOT Work Program in FY 2017/18 toward Construction for paved shoulders on CR 575, from N of CR 476 to S of CR 624 in Sumter County; and

WHEREAS, \$426,703 is programmed into the FDOT Work Program in FY 2015/16 toward Capital for Fixed Route Transit in Lake County.

NOW, THEREFORE, BE IT RESOLVED by the Lake~Sumter MPO that:

1. The FY 2015/16-2019/20 TIP is hereby amended to program: \$2,577,481 in FY 2015/16 toward Right-of-Way; \$1,622,982 in FY 2015/16 toward Construction; \$7,105,600 in FY 2016/17 toward Right-of-Way; \$47,506,628 in FY 2016/17 toward Construction; \$6,555,444 in FY 2017/18 toward Right-of-Way; \$6,128,734 in FY 2018/19 toward Right-of-Way; and \$73,741 in FY 2019/20 toward Construction for the widening of SR 46/US 441, from west of US 441 to east of Vista View Lane in Lake County (FDOT Financial Management Number 2382752);
2. The FY 2015/16-2019/20 TIP is hereby amended to program: \$112,406 in FY 2015/16 toward Preliminary Engineering; and \$351,836 FY 2017/18 toward Construction for paved shoulders on C-470, from CR 439 to SR 44 in Sumter County (FDOT Financial Management Number 4361511);
3. The FY 2015/16-2019/20 TIP is hereby amended to program: \$170,681 in FY 2015/16 toward Preliminary Engineering; and \$605,809 in FY 2017/18 toward Construction for paved shoulders on CR 475, from SR 44 to the Marion County Line in Sumter County (FDOT Financial Management Number 4361491);
4. The FY 2015/16-2019/20 TIP is hereby amended to program: \$134,263 in FY 2015/16 toward Preliminary Engineering; and \$535,307 in FY 2017/18 toward Construction for paved shoulders on CR 575, from N of CR 476 to S of CR 624 in Sumter County (FDOT Financial Management Number 4361851);
5. The FY 2015/16-2019/20 TIP is hereby amended to program: \$426,703 in FY 2015/16 toward Capital for Fixed Route Transit in Lake County (FDOT Financial Management Number 4388671);

6. The Chairman of the Lake~Sumter MPO is authorized to submit, and hereby submits, the amended FY 2015/16 – 2019/20 TIP to the:
- a. Federal Highway Administration (FHWA) through the Florida Department of Transportation (FDOT);
 - b. Federal Transit Administration (FTA) through FDOT;
 - c. Federal Aviation Administration (FAA);
 - d. Bureau of Community Planning, Division of Community Development, Florida Department of Economic Opportunity (DEO);
 - e. Members of Legislature representing the Lake~Sumter MPO.

DULY PASSED AND ADOPTED this _____ day of _____, 2015.

Lake~Sumter Metropolitan Planning Organization

Ray Goodgame, Chairman

This _____ day of _____, 2015

Approved as to Form and Legality:

Melanie N. Marsh, MPO Attorney

48 timeframe as the adjacent Wekiva Parkway project (SR 429), which is to be complete in Lake County in 2019;
49 and

50
51 **NOW, THEREFORE, BE IT RESOLVED** by the Lake~Sumter MPO that:

- 52 1. The Florida Department of Transportation is requested to explore options to restore to FY 2018/19
53 the US 441 (SR 500) widening project from Lake Ella Road to Avenida Central (FDOT Financial
54 Management #238395-5) or to explore separating the 4.2-mile project into two segments, with the
55 priority being the northern section from just south of the CR 466 intersection north to Avenida
56 Central, and programming the proposed northern segment for construction in FY 2018/19;
- 57 2. The Florida Department of Transportation is requested to explore options to restore to FY 2018/19
58 construction of the Lake-Wekiva Trail (FDOT Financial Management #430975-5) through the
59 Neighborhood Lakes property from the CR 435 trailhead in Orange County north to SR 46 in Lake
60 County;
- 61 3. The Chairman of the Lake~Sumter MPO is authorized to submit, and hereby submits, to the Florida
62 Department of Transportation District 5 Secretary this request as a response to the FDOT Tentative
63 Work Program FY 2016/17-2020/21.

64
65 **DULY PASSED AND ADOPTED** this _____ day of _____, 2015.

66
67 Lake~Sumter Metropolitan Planning Organization

68
69
70 _____
71 Ray Goodgame, Chairman
72 This _____ day of _____, 2015

73
74 Approved as to Form and Legality:

75
76
77 _____
78 Melanie Marsh, MPO Attorney

OCTOBER 14 DRAFT Page Number	NOVEMBER 18 DRAFT Page Number	CHANGE
8	11	ADDED: OBJECTIVE – Invest in Intelligent Transportation Systems (ITS) as an alternative to adding roadway capacity
10	16	ADDED: Table 1 - Population and Employment Estimates
14	24	<p>ADDED: These local initiatives are in direct response to regional changes in rail and truck freight patterns and a growing interest by the two counties in the economic development potential associated with freight and goods movement activities. Consideration of these existing initiatives and other similar projects is reflected in Transportation 2040 as a result of the MPO's participation in MetroPlan Orlando's 2013 Central Florida Regional Freight Mobility Study (See Map 7). The study provided valuable information on linking goods movement in our region with the region's economy, job creation and future freight related economic opportunities. At the national and state levels, the federal transportation bill, MAP-21 or the Moving Ahead for Progress in the 21st Century Act, was signed into law by President Obama on July, 6 2012, funding surface transportation programs. MAP-21 recommended that states develop state freight plans, including these required elements to qualify for an increased freight project funding percentage:</p> <ul style="list-style-type: none"> • Identify trends, needs and issues • Describe policies, strategies and performance measures to guide investment decisions • Describe how the plan will improve state ability to meet national freight goals • Consider innovative technologies and operational strategies • Describe improvements required to reduce deterioration of heavy truck routes • Provide an inventory of facilities with freight mobility issues and strategies to address those issues. <p>In response, the State of Florida subsequently developed the Freight Mobility and Trade Plan (FMTP). The Florida FMTP provides guidance to the FDOT on freight and goods movement-related policy and investment decisions. The plan informs the state Legislature, private industry, and other governmental agencies on the logistics and trade vision for Florida.</p> <p>The Policy Element is the foundation of the FMTP, setting objective and strategies developed through a two year outreach to stakeholder groups representing a synthesis of ideas, views and issues of a diverse public. The objectives focus on several areas including: a collaborative effort among economic development, trade, and logistics programs; support of freight movement investments; balancing investments among the different forms of transportation; increasing operational efficiency of goods movement; and minimizing costs in the supply chain.</p> <p>The Investment Element of the FMTP details a collaborative and transparent project prioritization process to match funding for short-term and long-term to ensure maximum return on Florida's investment. It includes a complete assessment of freight infrastructure needs and a prioritization process for determining funding allocation. The MPO was an active and enthusiastic participant in the development of the FMTP ensuring the region's needs and goals were recognized in the state's plan. As the MPO moves forward with freight planning for the two-county region, it will be done in coordination with FDOT and the FMTP.</p>
16	33	<p>ADDED: <i>Bicycle and Pedestrian Needs</i></p> <p>The transportation needs analysis conducted for <i>Transportation 2040</i> identified pedestrian and bicycle facility network needs in the MPO area based on analyzing existing conditions and engaging stakeholders and the public in the planning process. Specific projects and policy recommendations are included in the new <i>Transportation 2040</i> Programs Areas developed to serve as a guide to improve the safety and connectivity of walking and biking within the MPO Planning area. The ultimate goal of the Transportation Needs Analysis is to identify a network of sidewalks and bicycle facilities that provide a safe and efficient alternative transportation system. And finally the Transportation 2040 plan will capitalize on the area's position within Florida's rapidly growing trail network by planning for a series of paved multi-use trails that connect to other regional trails in Florida, including the Coast-to-Coast Trail and the Heart of Florida Loop. These trails will not only provide greater connectivity and recreational odging percentage:</p> <ul style="list-style-type: none"> • Identify trends, needs and issues <p>Communities within the MPO planning area are implementing new approaches to transportation planning, such as better coordinating land use and transportation; increasing the availability of high-quality transit service; creating redundancy, resiliency and connectivity within their road networks; and ensuring connectivity between pedestrian, bike, transit, and road facilities. This multi-modal approach to transportation with supportive development patterns, helps create a variety of transportation options for the residents and visitors to the region.</p> <p>Lake County joined forces with Bike Walk Central Florida (BWCF) to promote and create safe and courteous roads, trails, and transit ways, where bicycling and walking for transportation and recreation are accessible and a common part of our daily experience, enhancing our physical health and the quality of life in our community. BWCF promotes walkable and bikeable communities through raising public awareness and advocating for safe, active transportation, and recreation by:</p> <ul style="list-style-type: none"> § Educating walkers, cyclists, motorists and transit riders about Florida's road laws, their rights, responsibilities, and courteous behaviors; § Supporting transportation corridor planning and design using Complete Streets principles; § Encouraging the development and maintenance of trails throughout Florida; § Promoting a built environment that supports physical, environmental and economic health, provides for safe transportation choices, and encourages interaction among citizens of all ages, incomes and abilities.

21	46	<p>ADDED: <i>Intelligent Transportation Systems (ITS) Program</i></p> <p>Building on the TSM&O efforts, Intelligent Transportation Systems utilize technology as a means to create additional capacity within existing infrastructure. Understanding that additional roadway capacity (expanded facilities or new facilities) is not always the most feasible approach to address traffic congestion challenges, the MPO will develop an Intelligent Transportation Systems (ITS) policy in a continued effort to better enhance the region's existing transportation infrastructure and to get a better return on transportation investments. The shift toward TSM&O and ITS is due to increasing travel demands, significant number of constrained roadways, high construction costs, and environmental and community impacts. ITS has moved to the forefront of transportation planning, focusing on making the existing transportation system more efficient and responsive to drivers instead of making high-cost major road capacity enhancements. ITS applies of a combination of advanced technologies, robust planning, improved preparedness, and extensive coordination to improve the safety, mobility and reliability of the surface transportation network and transit system. Examples of ITS approaches applicable to the MPO's efforts include traffic signal interconnectivity and synchronization, signal preemption to provide priority to emergency vehicles and to transit vehicles, variable message boards and variable speed limit signs adaptive to traffic conditions, camera monitoring of traffic conditions and real-time adaptive signal timing to respond to changes in traffic conditions.</p> <p>Strategic themes to the MPO ITS plan, which set the direction, including priorities, are meant to focus the attention on intended outcomes. These themes could:</p> <ul style="list-style-type: none"> • enable safer vehicles and roadways; • enable mobility; • limit environmental impacts; • promote innovation; and/or • support transportation system information sharing.
25	51	ADDED: Intelligent Transportation Systems (ITS) Program to Cost Feasible Table 3; Changed Cost Feasible Table numbering.

**LAKE~SUMTER METROPOLITAN PLANNING ORGANIZATION
TECHNICAL ADVISORY COMMITTEE**

2015 MEMBER LIST

<u>NAME</u>	<u>REPRESENTING</u>
Chris Schmidt Fred Schneider (1 st alternate)	Lake County
Dawn McDonald	Lake County Schools
Richard Baier/ Vice-Chairman Karl Holley (alternate)	Sumter County
Kyle Mills Jackey Jackson (alternate)	Sumter County / Transit
(vacant)	Sumter County Schools
Stephen Cross	Town of Astatula
Denise Lee	City of Bushnell
(vacant)	City of Center Hill
Jim Hitt John Kruse (alternate)	City of Clermont
(vacant)	City of Coleman
Tom Carrino	City of Eustis
Gary La Venia	City of Fruitland Park
Ryan Berger	City of Groveland
vacant	Town of Howey-in-the-Hills
Thad Carroll	Town of Lady Lake
DC Maudlin Bill Wiley (alternate)	City of Leesburg
(vacant)	City of Mascotte
Vacant	City of Minneola
(vacant)	Town of Montverde
Mark Reggentin / Chairman	City of Mount Dora
Jacques Skutt Vacant (alternate)	City of Tavares
Aaron Mercer Richard Hatfield (alternate)	City of Umatilla
(vacant)	City of Webster
Melanie Peavy Jason McHugh (alternate)	City of Wildwood

PROJECT UPDATES

- **US 301 Project Development and Environment Study (Sumter County) – US 301/SR 44 Intersection Improvements and US 301/Florida’s Turnpike Interchange Improvements**
US 301 is being studied from SR 44 in Wildwood south to C-470 (west) in Sumterville. The study is in the early stages. The study will lead to specific operational improvements and design improvements to the interchange of US 301 and Florida’s Turnpike and to the intersection of US 301 and SR 44. The study is also examining the concept of a new alignment for east of Coleman
- **I-75/CR 514 Interchange Planning (Sumter County near Coleman)**
Staff is coordinating with Sumter County, FDOT and the Federal Highway Administration on an Interchange Justification Report and on an upcoming study of a potential new interchange with I-75 west of Coleman at CR 514. This effort will be coordinated with the US 301 study.
- **C-470 Study**
FDOT has commenced a Project Development and Environment Study for C-470 in Sumter County east into Lake County across Florida’s Turnpike. The study will look at future needs for the roadway through 2040. The study is also part of an initiative to have 470 in both counties designated as a state road from I-75 in Sumter County east to US 27 in Lake County.
- **Wekiva Parkway Project**
FDOT and the Central Florida Expressway Authority are now moving into the right-of-way acquisition phase for most segments of the project. Construction is underway by CFX from US 441 north toward Kelly Park Road. Construction of FDOT segments will be substantially underway by 2017.
- **Trails: Central Florida C2C Trail and Wekiva Trail**
Because of the Central Florida MPO Alliance prioritization of Regional Trails, almost all phases of the C2C Trail recently received advancements of funding from FDOT for each needed phase in both counties. The FDOT recently announced forthcoming programming of the subsequent phases of each segment of the C2C. Meanwhile, the Wekiva Trail has two segments of four committed for construction to be complete by 2019. The other two segments are funded in 2016 for the design phase.
- **Minneola Interchange: Florida’s Turnpike/North Hancock Road/Citrus Grove Road**
Florida’s Turnpike Enterprise has selected a firm to design and build the interchange. The FDOT TRIP grant for North Hancock Road will allow Lake County to meet FTE’s timeline for construction to be complete by the end of 2016. Lake County’s commitment will extend North Hancock Road from CR Old 50 to north of Fosgate Road. From that point north, the roadway would be included as part of the FTE design-build project. The final portion of the roadway, the extension of the roadway north from the interchange to CR 561A, will be constructed by the Hills of Minneola landowner. Meanwhile, an east-west connection to US 27 will be accomplished by building Citrus Grove Road as a four-lane roadway, which is soon under design.
- **Lake-Orange Parkway (US 27 to SR 429)**
The Orange-Lake Parkway Partners, LLC, is preparing an environmental report and the LLC is working with Florida’s Turnpike on a traffic and revenue study to determine the viability of a potential toll road between US 27 in Clermont east to SR 429 just south of Winter Garden. A \$28.5 million State Infrastructure Bank loan is currently programmed in the FDOT program for the LLC of landowners to accomplish the potential projects. Meanwhile, the Central Florida Expressway Authority has agreed to include the concept in the authority’s 2040 Master Plan and to examine concepts for the potential roadway. Therefore, multiple options are being explored to satisfy this regional need that would catalyze the northern corridor of the Wellness Way Sector Plan.
- **SR 50 Corridor Study**
SR 50 is being studied from US 301 in Hernando County east to CR 33 in Mascotte. The study will look at safety and capacity needs and will take into account the environmental issues relative to the Green Swamp and the Withlacoochee State Forest. A public meeting will be held at Mascotte Civic Center Thursday, October 29, from 6 to 8 p.m.