

October 2014

Contact: [Vickie.Wyche@dot.state.fl.us](mailto:Vickie.Wyche@dot.state.fl.us)

(386) 943-5185

**LAKE COUNTY**  
**CONSTRUCTION IN PROGRESS**

**238275-6**

SR 429 (Wekiva Pkwy) from Orange County Line to West of Old McDonald Road (Section 4B), 2.447 miles.

Design Build new limited access toll road. No lane closures anticipated.

**Estimate completion: Fall 2014**

**430665-1/2**

SR 500 (US 441) Pave Shoulders – Lake County

**Start Date: 8/19/2014**

**Estimate completion: 12/2014**

**419370-1**

SR 44 at Royal Trails Road

Add an additional Left Turn Lane at Royal Trails Road, milling and resurfacing, drainage, pavement markings and other incidental construction.

**PROJECT COMPLETED**

**LAKE COUNTY**  
**Other Projects Pending**

1. **US 441** - Widening to six lanes along 4.1 miles from Lake Ella Road to Avenida Central South (FM No. 2383955). About \$16 million in right of way is funded through FY 10/11. Design for six-laning of the 1.9 miles from Perkins Street to SR 44 is in progress, with \$25 million in right of way funded through FY 12/13 (FM No. 2383943). Construction programmed in Fiscal Year 2018/19.
2. **SR 500 (US 441)** - An environmental study into possible widening along 1.6 miles from SR 44 (old CR 44B) to Lincoln Avenue in Mt. Dora is planned for FY 13/14 (FM No. 429356). PD&E underway
3. **US 27** - Six-laning 6.5 miles from Boggy Marsh Road to Lake Louisa Road (FM No. 238422). Design has been completed and right of way acquired. Construction is not yet funded.
4. **SR 44 (CR 44B)** - Design for four-laning the two miles from US 441 to SR 44 is in progress (FM No. 409870). Right of way FY 2014. Construction not yet funded.
5. **SR 46** - An environmental study is being conducted by the Central Florida Expressway Authority along the 16.5 miles from US 441 to Orange Blvd. in Seminole County (FM No. 238275) in conjunction with their study of the Wekiva Parkway.
6. **SR 19** - An environmental study into possible widening along the 4.7 miles from CR 48 to CR 561 is planned for FY 10/11 (FM No. 238319). Design of improvements is funded in FY 13/14.
7. **SR 33** - Construct left turn lane at CR 474 (FM No. 423096). Bids are to be received in FY 13/14. The estimated cost is \$660,000. **Estimated start date 10/06/2014**
8. **Rolling Acres Road Sidewalk** - \$830,000 in grants to the city of Lady Lake through FY 12/13 is to pay for design and construction of a sidewalk from Vista San Polo to Griffin Road (FM No. 427855).
9. **CR 561** - \$1.1 million in grants to Lake County through FY 14/15 is to pay for construction of a roundabout at the CR 455 intersection (FM No. 429606).

October 2014

Contact: [Vickie.Wyche@dot.state.fl.us](mailto:Vickie.Wyche@dot.state.fl.us)

(386) 943-5185

10. **CR 466A (Miller St.)** - A \$8.7 million grant to Lake County if FY 2014 is to pay half the estimated right of way costs for widening along the three miles from the Lake-Sumter Sumter County line to Sunny Court (FM No. 430253-1). This is a Transportation Regional Incentive Program (T.R.I.P.) project. JPA with Lake County
11. **CR 466A (Miller St.)** – A \$5.0 million grant for construction from US 27 to Sunny Court (FM No. 430253-2) in FY 2015. This is a Transportation Regional Incentive Program (TRIP) project. JPA with Lake County

## **SUMTER COUNTY CONSTRUCTION IN PROGRESS**

### **Other Projects Pending**

1. **I-75** – Six-laning along the 21.5 miles from the Hernando County Line to Florida's Turnpike (FM 262626-2). Design in progress, with ROW Acquisition funded through FY 2013/14 (FM 242626-3). Hernando County Line to CR 470 Construction phase in FY 2014/15.
2. **SR 48** - Widening to four lanes along the 1.6 miles from E. of I-75 to Main Street (CR 475) (FM No. 2404182). Right of way is to be purchased in FY 11/12. Bids are to be received in FY 15/16. The estimated cost is \$20 million.
3. **US 301/SR 44 Intersection** - Construct north and southbound turn lanes (FM No. 430188). This is a privately funded project. Bids are to be received in FY 13/14. The estimated cost is \$130,000.
4. **US 301** - Widening from two to four lanes SR 35 (US 301) from CR 470 to SR 44 Design Phase FY 17/18 (FM No. 430132)
5. **I-75 at CR 514 from 0.5 miles W. of I-75 to US 301** – An environment study (PD&E) FY 2014/15. (FM435476-1)
6. **CR 466** - A \$1.6 million grant (CIGP/SCRA) to Sumter County in FY 14/15 is to pay for resurfacing along the 4.5 miles from US 301 to just east of CR 475 (FM No. 428443).
7. **CR 466/US 301 Intersection** - Construct north and southbound turn lanes (FM No. 430187). This is a privately funded project. Bids are to be received in FY 13/14. The estimated cost is \$180,000.
8. **CR 475** - A \$3.26 million grant to Sumter County in FY 16/17 will pay for construction of paved shoulders and resurfacing along the 3.7 miles from CR 470 to CR 542, including replacement of the timber column bridge at Jumper Creek with concrete box culverts (FM No. 429944-1). Construction programmed in FY 2017/18
9. **CR 673** – A \$2.032 million grant (FY 2017/18) to Sumter County to widen lanes, pave shoulders and resurfacing from .8 miles west of US 301 to I-75. FM# 433670-1. Construction programmed in FY 2018/19.

# Lake~Sumter MPO Transportation Management System

---

## Traffic Impact Study Review Update – September 2014

### City of Clermont

- Culver's Restaurant – Traffic Impact Study (9-29-14)  
**Status: *Waiting Trip Reservation Request***  
*Project:* Proposed 3,954 SF fast-food restaurant with drive-thru window  
*Location:* Southeast corner of the intersection of US 27 & Johns Lake Road  
*Access:* US 27 (right-in/right-out) and Johns Lake Road via shared driveways  
*Trip Generation:* Net new 1,158 daily trips, with 76 pm peak hour trips (39 entering and 37 exiting)

### Town of Lady Lake

- Titan ALF & Memory Care Center – Trip Generation Analysis (9-30-14)  
**Status: *Trips Reserved***  
*Project:* Proposed 86-bed assisted living facility in exchange of 7,550 SF of retail space on previously approved development  
*Location:* Northeast corner of the intersection of Alverez Ave. and Avenida Central  
*Access:* Two driveways on Alverez Ave. and one driveway on Avenida Central  
*Trip Generation:* 346 daily trips, with 29 pm peak hour trips (13 entering and 16 exiting)  
*Notes:* The modification to the previously approved development will not result in a zero net impact.
- Green Key Village – Trips Removal Request (9-25-14)  
**Status: *Reserved Trips Removed***  
*Project:* Proposed 48-lot single family subdivision  
*Location:* Lake Ella Rd, east of Rolling Acres Rd  
*Access:* Lake Ella Rd and Abeble Rd (emergency access only)  
*Trip Generation:* 402 daily trips, with 42 pm peak hour trips (26 entering and 16 exiting)

### City of Minneola

- Ardmore Reserve (f.k.a. Hanover/Smoak Property) – Revised Traffic Impact Study (9-12-14)  
**Status: *Waiting Trip Reservation Request***  
*Project:* Proposed 674 single family dwelling units  
*Location:* East of US 27 and North and West of Grassy Lake Rd.  
*Access:* Grassy Lake Rd, Extension of Tranquility St, US 27/N. Main St via extension of Grassy Lake Rd.  
*Trip Generation:* 6,019 daily trips, with 585 pm peak hour trips (369 entering and 216 exiting)

- Dunkin' Donuts Shop – Traffic Impact Study (9-29-14)

**Status: *Waiting Trip Reservation Request***

*Project:* Proposed 2,524 SF donut shop

*Location:* Northeast corner of the intersection of US 27 and Southern Breeze Drive

*Access:* Restricted access on US 27 (right-in/right-out) and full access on Southern Breeze Dr. via shared driveway.

*Trip Generation:* Net new 1,054 daily trips, with 55 pm peak hour trips (27 entering and 28 exiting)

### Lake County

- Johns Lake Landing – Methodology (9-26-14)

**Status: *Waiting Traffic Impact Study***

*Project:* Proposed 150 single family dwelling units

*Location:* South of SR 50, between Hartle Road and Magnolia Pointe Blvd.

*Access:* Hartle Road and Magnolia Pointe Blvd.

*Trip Generation:* 1,757 daily trips, with 173 pm peak hour trips (109 entering and 64 exiting)

*Notes:* The modified PUD proposes up to 777 Single Family Homes, a 71 Assisted Living Units and 274,000 SF Commercial Space with a potential to generate a net of new 13,459 daily trips, with 1,246 pm peak hour trips (684 entering and 562 exiting)

### City of Wildwood

- ELIM Senior Care Living Development – Traffic Impact Study (9-4-14)

**Status: *Large Development - Reviewed***

*Project:* Proposed congregate care facility with 150 units, a 170 bed assisted living facility, and a 50,000 SF church

*Location:* Northwest corner of CR 103 & Woodridge Dr.

*Access:* CR 103 and Woodridge Drive

*Trip Generation:* 1,211 daily trips, with 91 pm peak hour trips (43 entering and 48 exiting)

- AutoZone (SP 1408-03) – Traffic Impact Study (9-22-14)

**Status: *Small Development - Reviewed***

*Project:* Proposed 7,831 SF auto parts store

*Location:* Southwest corner of C-466 & the CSX right-of-way, 0.2 miles east of US 301

*Access:* C-466 and CR 106

*Trip Generation:* Net new 260 daily trips, with 25 pm peak hour trips (13 entering and 12 exiting)





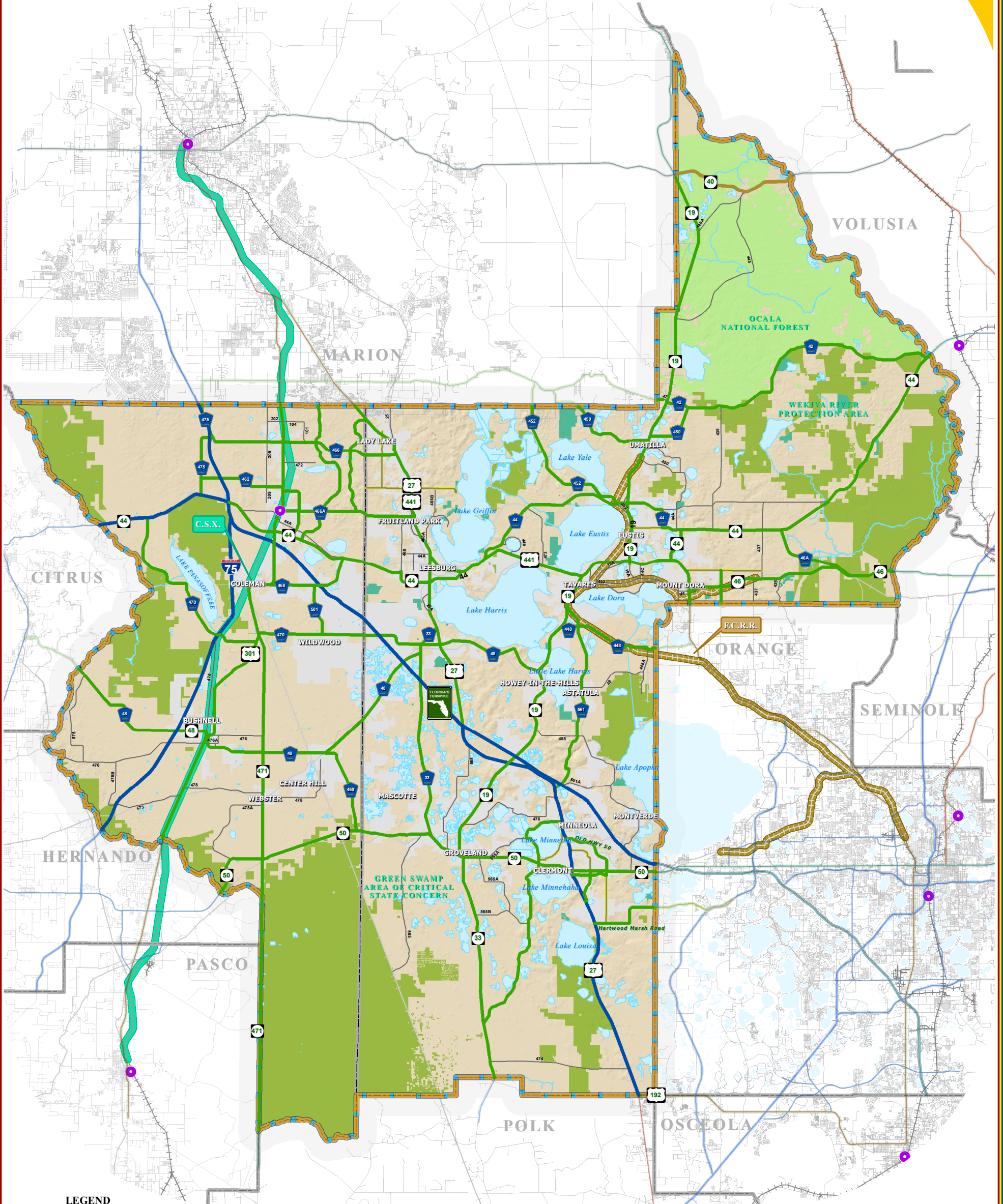
**TABLE 1  
LAKE-SUMTER MPO REGIONALLY SIGNIFICANT CORRIDORS**

CORRIDOR	FROM	TO
C-462	C-475	C-466A
C-466/CR 466	SR 93/I-75	SR 25/US 27 (SR 500/US 441)
C-466A/CR 466A	SR 35/US 301	SR 25/US 27 (SR 500/US 441)
C-468	SR 35/US 301	SR 44
C-469	C-48	SR 50
C-470	SR 44	SR 35/US 301
C-470	SR 35/US 301	SUMTER/LAKE COUNTY LINE
C-475	SR 44	SUMTER/MARION COUNTY LINE
C-48	CITRUS/SUMTER COUNTY LINE	SUMTER/LAKE COUNTY LINE
CR 139/POWELL RD	SR 44	C-466A
CR 33	SR 25/US 27	SR 50
CR 42	MARION/LAKE COUNTY LINE	SR 44
CR 44	SR 500/US 441	ORANGE AVE
CR 448	SR 19	LAKE/ORANGE COUNTY LINE
CR 450	MARION/LAKE COUNTY LINE	CR 42
CR 452	MARION/LAKE COUNTY LINE	SR 19
CR 46A	SR 44	SR 46
CR 470	SUMTER/LAKE COUNTY LINE	CR 33
CR 48	SUMTER/LAKE COUNTY LINE	SR 19
CR 501	C-468	C-470
CR 561	SR 19	SR 25/US 27
CR 561	US 27	SR 33
CR OLD 50	SR 25/US 27	NORTH HANCOCK RD
CITRUS TOWER BLVD	US 27	SR 50
HARTWOOD MARSH ROAD	SR 25/US 27	LAKE/ORANGE COUNTY LINE
HOOKS ST	SR 25/US 27	SOUTH HANCOCK RD
NORTH HANCOCK RD	CR OLD 50	SR 50
SOUTH HANCOCK RD	SR 50	HOOKS ST
BUENA VISTA BLVD	SR 44	SUMTER/MARION COUNTY LINE
MORSE BLVD	C-466A	US 27/441
ROUND LAKE RD	LAKE/ORANGE COUNTY LINE	WOLF BRANCH RD
SR 19	SR 50	LAKE/MARION COUNTY LINE
SR 25/US 27	MARION/SUMTER COUNTY LINE	LAKE/POLK COUNTY LINE
SR 33	POLK/LAKE COUNTY LINE	CR 33
SR 35/US 301	HERNANDO/SUMTER COUNTY LINE	SUMTER/MARION COUNTY LINE
SR 40	MARION/LAKE COUNTY LINE	LAKE/VOLUSIA COUNTY LINE
SR 44	CITRUS/SUMTER COUNTY LINE	LAKE/VOLUSIA COUNTY LINE
SR 46	SR 500/US 441	LAKE/SEMINOLE COUNTY LINE
SR 471	SR 35/US 301	SUMTER/POLK COUNTY LINE
SR 50	HERNANDO/SUMTER COUNTY LINE	LAKE/SUMTER COUNTY LINE
SR 50	LAKE/SUMTER COUNTY LINE	LAKE/ORANGE COUNTY LINE
SR 500/US 441	MARION/SUMTER COUNTY LINE	LAKE/ORANGE COUNTY LINE
SR 530/US 192	SR 25/US 27	LAKE/ORANGE COUNTY LINE
SR 91 /FL TURNPIKE	SR 93 (I-75)/SUMTER COUNTY LINE	LAKE/SUMTER COUNTY LINE
SR 91 /FL TURNPIKE	LAKE/SUMTER COUNTY LINE	LAKE/ORANGE COUNTY LINE
SR 93/I-75	HERNANDO/SUMTER COUNTY LINE	SUMTER/MARION COUNTY LINE

ADOPTED : 09/28/2005  
LAST AMMENDED: 01/26/2011



# ADOPTED REGIONALLY SIGNIFICANT CORRIDORS



**LEGEND**

- Water Body
- Municipal Area
- County Delineation
- Lake-Sumter MPO Boundary
- Public Lands Managed by Federal Agency
- Public Lands Managed by State Agency
- Public Lands Managed by Local Agency
- County Road
- State Road
- US Highway
- Interstate
- Turnpike
- Amtrak Station
- Active Railroad
- Abandoned Railroad

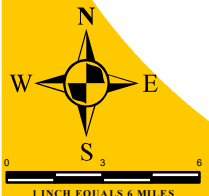
**ADOPTED REGIONAL CORRIDOR CLASSIFICATION**

- Regionally Significant Corridor
- Strategic Intermodal System
- Emerging
- Strategic Intermodal System
- Regionally Significant Rail Corridor - C.S.X.
- Emerging Regionally Significant Rail Corridor - F.C.R.R.

ADOPTED: SEPTEMBER 28, 2005  
REVISED: JANUARY 25, 2006  
REVISED: APRIL 26, 2006  
REVISED: APRIL 25, 2007  
REVISED: DECEMBER 3, 2008  
REVISED: MAY 26, 2010  
REVISED: DECEMBER 8, 2010  
REVISED: JANUARY 26, 2011

**NOTE:**

Corridors may be eligible for Transportation Regional Incentive Program (TRIP) funding.



## TRANSPORTATION PLANNING AREA SUMTER AND LAKE COUNTY, FLORIDA



**DATA SOURCES:**  
Lake and Sumter County GIS Department, Planning  
Public Lands Florida Managed Areas (FLMA)  
Florida Natural Areas Inventory (FNAI) Data  
Data Compilation and Map Production compliments of the  
Lake-Sumter Metropolitan Planning Organization

**MAP COMPOSITION:**  
JANUARY, 2011

This map product was prepared from a Geographic Information System established by the Lake-Sumter Metropolitan Planning Organization and Lake County Board of County Commissioners. Its employees, agents and professional make no warranty as to its accuracy, and in particular its accuracy as to the following: dimensions, contents, property boundaries, or placement or location of any single feature thereon. The Lake-Sumter Metropolitan Planning Organization and Lake County Board of County Commissioners, its employees, agents and professional MAKE NO WARRANTY OF MERCHANTABILITY OR FITNESS FOR PURPOSES FOR USE FOR A PROJECT OR PURPOSES IN PRESS OR IMPLIED WITH RESPECT TO THIS MAP PRODUCT. Indemnification of all data contained on this map product shall be obtained by the user of this map.



**TABLE 1**  
**LAKE-SUMTER MPO EMERGING REGIONALLY SIGNIFICANT CORRIDORS**

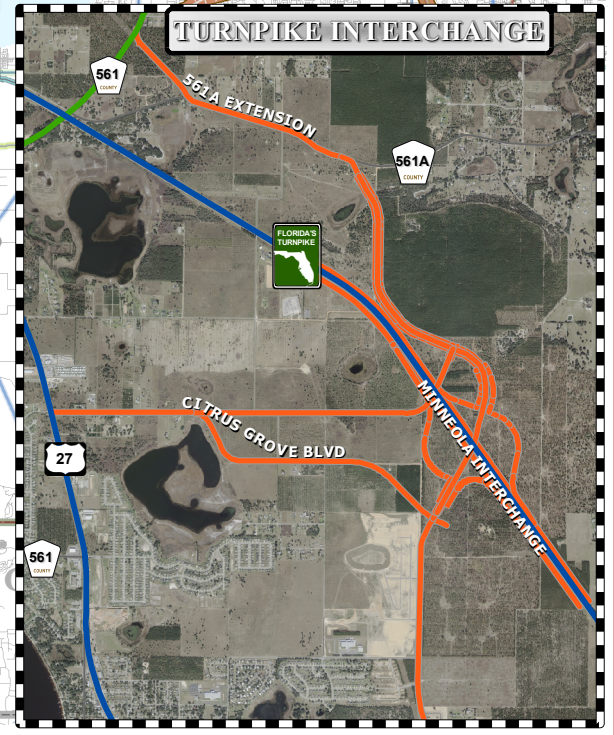
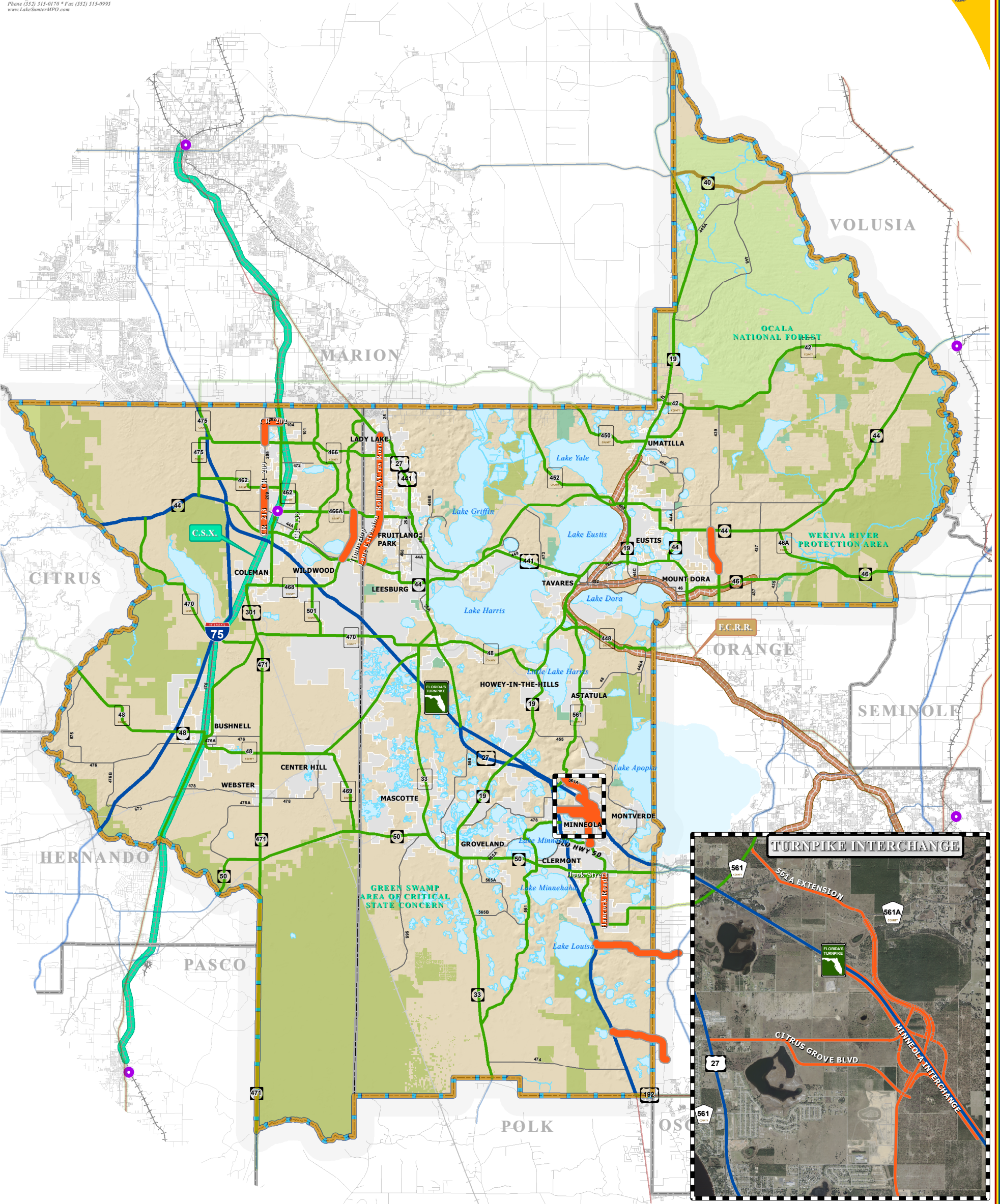
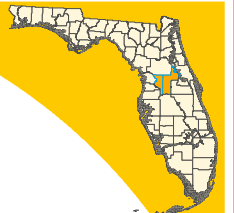
CORRIDOR	FROM	TO
561A EXTENSION	CR 561	MINNEOLA INTERCHANGE (FUTURE INTERCHANGE)
CR 202	US 301	CR 209
CR 209	CR 202	CR 466
CR 209	CR 462	CR 44A
CR 213	CR 44A	SR 44
CITRUS GROVE BLVD	US 27	MINNEOLA INTERCHANGE (FUTURE INTERCHANGE)
HANCOCK ROAD	HOOKS STREET	HARTWOOD MARCH ROAD
MINNEOLA INTERCHANGE	CITY OF MINNEOLA	CITY OF MINNEOLA
NORTH GRASSY LAKE ROAD	CITRUS GROVE ROAD (FUTURE ROAD)	MINNEOLA INTERCHANGE (FUTURE INTERCHANGE)
NORTH HANCOCK EXTENSION	OLD HWY 50	MINNEOLA INTERCHANGE (FUTURE INTERCHANGE)
OLD HWY 50	SOUTH OLD HWY 50	NORTH HANCOCK EXTENSION
ROLLING ACRES ROAD	US 441/27	TIMBERTOP LANE EXTENSION
ROUND LAKE EXTENSION	SR 44	WOLF BRANCH ROAD
SOUTH MORSE BLVD EXTENSION	SR 44	C-466A
SAWGRASS BAY BLVD	US 27	LAKE-ORANGE COUNTY LINE
LAKE ORANGE PARKWAY	US 27	SR 50
TIMBERTOP LANE EXTENSION	ROLLING ACRES ROAD	SR 44

ADOPTED : February/2009  
 LAST AMENDED: January 26, 2011





# EMERGING REGIONALLY SIGNIFICANT CORRIDORS



**LEGEND**

- Water Body
- Municipal Area
- County Delineation
- Lake-Sumter MPO Boundary
- Public Lands Managed by Federal Agency
- Public Lands Managed by State Agency
- Public Lands Managed by Local Agency
- Amtrak Station
- Active Railroad
- Abandoned Railroad
- County Road
- State Road
- US Highway
- Interstate
- Turnpike

**Emerging Regionally Significant Corridors**

- Adopted Regional Corridor Classification**
- Regionally Significant Corridor
  - Strategic Intermodal System
  - Emerging Strategic Intermodal System
  - Regionally Significant Rail Corridor - C.S.X.
  - Emerging Regionally Significant Rail Corridor - F.C.R.R.

ADOPTED: SEPTEMBER 28, 2005  
REVISED: JANUARY 25, 2006  
REVISED: APRIL 26, 2006  
REVISED: APRIL 25, 2007  
REVISED: DECEMBER 3, 2008  
REVISED: MAY 26, 2010  
REVISED: DECEMBER 8, 2010  
REVISED: JANUARY 26, 2011

**NOTE:**  
Corridors may be eligible for Transportation Regional Incentive Program (TRIP) funding.



## TRANSPORTATION PLANNING AREA SUMTER AND LAKE COUNTY, FLORIDA



**DATA SOURCES:**  
Lake and Sumter County GIS Department, Planning  
Public Lands (Florida Managed Areas, (FLMA)  
Florida Natural Areas Inventory (FNAI) Data, 2008  
Data Compilation and Map production compliments of the  
Lake-Sumter Metropolitan Planning Organization.  
This map product was prepared from a Geographic Information System established by the Lake-Sumter Metropolitan Planning Organization and Lake County Board of County Commissioners. Its employees, agents and personnel make no warranty as to its accuracy, and in particular its accuracy in showing, dimensions, contents, property boundaries, or placement or location of any object therein. The Lake-Sumter Metropolitan Planning Organization and Lake County Board of County Commissioners, its employees, agents and personnel MAKE NO WARRANTY OF MERCHANTABILITY OR FITNESS FOR PURPOSES FOR USE, FOR A PROJECT, OR PURPOSE, EXPRESS OR IMPLIED WITH RESPECT TO THIS MAP PRODUCT. Independent verification of all data contained on this map product should be obtained by the user of this map.

**MAP COMPOSITION:**  
JANUARY, 2011



## **Lake~Sumter Metropolitan Planning Organization 2015 Draft Legislative Positions**

*October 2014*

### **STATEWIDE TRANSPORTATION FUNDING**

#### **1. Index Local Option Fuel Taxes**

The State of Florida long ago passed legislation to index state fuel taxes according to the Consumer Price Index. State gas taxes increase in Florida each year at a reasonable rate due to this indexing. Legislation is needed to provide the same annual indexing for local option fuel taxes. Fuel tax revenues for local projects have been affected by decreases in fuel consumption and a flattening of the revenue stream. Indexing would allow a more dependable revenue source for local transportation projects.

#### **2. Amend Statute Regarding Charter County and Regional Transportation System Surtax**

The current legislation allows an up-to-one-percent surtax, or sales tax, to be taken before voters as a referendum to fund transportation projects. The law has evolved through the last 25 years for the voter-enabled surtax to now be eligible to all 24 charter counties, as well as to any non-charter county that is part of a Regional Transportation Authority, resulting in 33 eligible urban counties. The transportation surtax is an appropriate referendum option for all Florida urban counties and, as a matter of statewide equity, should be extended to all urban counties served by a metropolitan planning organization. This would raise the number of eligible counties to approximately 40, including Lake and Sumter counties. The position has been supported by the Florida Association of Counties. During the 2013 session, the Florida League of Cities supported a bill that would expand eligibility to municipalities with a population of at least 150,000.

#### **3. Enhance and Protect the State Transportation Trust Fund**

In recent years, the Florida Legislature diverted massive funding levels from the State Transportation Trust Fund to balance the General Fund. \$6 billion in FDOT projects were deleted, totaling more than an entire fiscal year worth of projects. Such diversions of funds will result in the degradation of the state's transportation system and will dilute Florida's ability to be globally economically competitive.

#### **5. Enhance and Protect the Transportation Disadvantaged Trust Fund**

The Transportation Disadvantaged Trust Fund provides Florida's most vulnerable population access to medical services, nutrition, jobs and educational opportunities. With state-mandated changes in the coordinated system forthcoming regarding Medicaid trips, Florida counties have challenges ahead that will be exacerbated by funding diversions.

## **STATEWIDE POLICY**

- 1. Continue Direction of State Transportation Dollars to the Central Florida Coast-to-Coast Trail**

The Central Florida Coast-to-Coast Trail from Titusville to St. Petersburg is 75 percent constructed with multiple gap segments advancing to the next phase of development. The legislature and governor this past session directed a minimum of \$15.5 million in FY 2014/15 to the development of the C2C Trail. By providing another infusion of state funds into the trail development, the C2C Trail can be expedited.
- 2. Monitor Legislation on Developments of Regional Impact (DRIs)**

Legislation was proposed last session that would further dilute the laws guiding DRIs. Proponents of removing or reducing the DRI statutes claim that the local comprehensive planning process is adequate to address large developments. Meanwhile, planning proponents contest that DRI laws result in a much better planned regional development.
- 3. Weight Limits Maintained for Commercial Trucks on State Facilities**

In 2010, the Florida Legislature raised truck weight limits on state roads from 80,000 to 88,000 pounds. Nationwide, "pilot projects" continue to push the envelope in terms of allowable weights on state and federal roads, with some states allowing 97,000 to potentially as much as 110,000 pound truck weights – this is without the provision of additional funding to mitigate the impacts of heavier vehicles on roads and especially bridges. The MPO supports maintaining the current weight limits and encourages an assessment of fiscal impact of the recent increase in allowable truck weights on the FDOT.
- 4. Support a Statewide Comprehensive Rail System**

Florida is in need of a comprehensive rail plan that maximizes economic development potential of freight rail while planning for the provision of expanded passenger rail services in urban metropolitan areas and between metro areas.
- 4. Transportation Related Legislation**

With the removal of state-mandated transportation concurrency, the MPO supports legislation that strengthens home-rule rights of local governments regarding regional transportation partnerships and empowers local governments with funding and financing options.

## **REGIONAL PROJECTS**

### **1. Sumter County CR 514 Interchange with I-75**

State support is sought for an economic development initiative tied to new access in Sumter County via a potential interchange with I-75 just west of Coleman. With state support in planning and funding the infrastructure to make the new connection to I-75, a major landholding would be catalyzed for private industrial development centered around freight rail and interstate access. The CSX S-Line runs through the property adjacent to the potential interchange at CR 514.

### **2. 470 Corridor (Sumter and Lake Counties)**

The 470 Corridor, which includes C-470 in Sumter County and CR 470 and CR 48 in Lake County, is an east-west regionally-significant corridor that connects I-75, the CSX S-Line and US 301 in Sumter County east to Florida's Turnpike and US 27 in Lake County. The corridor is a premier candidate for economic development relative to the central location and the major transportation infrastructure it connects. State funding is sought to improve the corridor to four lanes from I-75 east to US 27.

### **3. Lake County CR 466A, Phase 3, Widening in Fruitland Park**

The east-west regionally-significant county road connects The Villages east through Fruitland Park to US 27/441. Widening to four lanes has advanced such that two phases are now funded for construction. State funding is sought for the final phase, which is less than two miles in length.

### **4. Round Lake Road (Lake County)**

With the Wekiva Parkway project moving closer to reality, the new SR 46 from the new SR 429 will be complete in 2019. Round Lake Road provides north-south access to SR 46 and the future Wekiva Parkway. Round Lake Road could provide more effective access if the roadway were to be extended two miles north to SR 44, thus opening regional access for much of eastern Lake County. State support is sought for this future regionally-significant corridor.



## **Lake~Sumter Metropolitan Planning Organization Draft 2015 Legislative Priorities**

*October 2014*

- 1. Index Local Option Fuel Taxes**
- 2. Continue Direction of State Transportation Dollars to the Central Florida Coast-to-Coast Trail**
- 3. Enhance and Protect the State Transportation Trust Fund and the Transportation Disadvantaged Trust Fund**
- 4. Amend Statute Regarding Charter County and Regional Transportation System Surtax to create equity among urban counties**