

October 2014

Contact: Vickie.Wyche@dot.state.fl.us

(386) 943-5185

LAKE COUNTY
CONSTRUCTION IN PROGRESS

238275-6

SR 429 (Wekiva Pkwy) from Orange County Line to West of Old McDonald Road (Section 4B), 2.447 miles.

Design Build new limited access toll road. No lane closures anticipated.

Estimate completion: Fall 2014

430665-1/2

SR 500 (US 441) Pave Shoulders – Lake County

Start Date: 8/19/2014

Estimate completion: 12/2014

419370-1

SR 44 at Royal Trails Road

Add an additional Left Turn Lane at Royal Trails Road, milling and resurfacing, drainage, pavement markings and other incidental construction.

PROJECT COMPLETED

LAKE COUNTY
Other Projects Pending

1. **US 441** - Widening to six lanes along 4.1 miles from Lake Ella Road to Avenida Central South (FM No. 2383955). About \$16 million in right of way is funded through FY 10/11. Design for six-laning of the 1.9 miles from Perkins Street to SR 44 is in progress, with \$25 million in right of way funded through FY 12/13 (FM No. 2383943). Construction programmed in Fiscal Year 2018/19.
2. **SR 500 (US 441)** - An environmental study into possible widening along 1.6 miles from SR 44 (old CR 44B) to Lincoln Avenue in Mt. Dora is planned for FY 13/14 (FM No. 429356). PD&E underway
3. **US 27** - Six-laning 6.5 miles from Boggy Marsh Road to Lake Louisa Road (FM No. 238422). Design has been completed and right of way acquired. Construction is not yet funded.
4. **SR 44 (CR 44B)** - Design for four-laning the two miles from US 441 to SR 44 is in progress (FM No. 409870). Right of way FY 2014. Construction not yet funded.
5. **SR 46** - An environmental study is being conducted by the Central Florida Expressway Authority along the 16.5 miles from US 441 to Orange Blvd. in Seminole County (FM No. 238275) in conjunction with their study of the Wekiva Parkway.
6. **SR 19** - An environmental study into possible widening along the 4.7 miles from CR 48 to CR 561 is planned for FY 10/11 (FM No. 238319). Design of improvements is funded in FY 13/14.
7. **SR 33** - Construct left turn lane at CR 474 (FM No. 423096). Bids are to be received in FY 13/14. The estimated cost is \$660,000. **Estimated start date 10/06/2014**
8. **Rolling Acres Road Sidewalk** - \$830,000 in grants to the city of Lady Lake through FY 12/13 is to pay for design and construction of a sidewalk from Vista San Polo to Griffin Road (FM No. 427855).
9. **CR 561** - \$1.1 million in grants to Lake County through FY 14/15 is to pay for construction of a roundabout at the CR 455 intersection (FM No. 429606).

October 2014

Contact: Vickie.Wyche@dot.state.fl.us

(386) 943-5185

10. **CR 466A (Miller St.)** - A \$8.7 million grant to Lake County if FY 2014 is to pay half the estimated right of way costs for widening along the three miles from the Lake-Sumter Sumter County line to Sunny Court (FM No. 430253-1). This is a Transportation Regional Incentive Program (T.R.I.P.) project. JPA with Lake County
11. **CR 466A (Miller St.)** – A \$5.0 million grant for construction from US 27 to Sunny Court (FM No. 430253-2) in FY 2015. This is a Transportation Regional Incentive Program (TRIP) project. JPA with Lake County

SUMTER COUNTY CONSTRUCTION IN PROGRESS

Other Projects Pending

1. **I-75** – Six-laning along the 21.5 miles from the Hernando County Line to Florida's Turnpike (FM 262626-2). Design in progress, with ROW Acquisition funded through FY 2013/14 (FM 242626-3). Hernando County Line to CR 470 Construction phase in FY 2014/15.
2. **SR 48** - Widening to four lanes along the 1.6 miles from E. of I-75 to Main Street (CR 475) (FM No. 2404182). Right of way is to be purchased in FY 11/12. Bids are to be received in FY 15/16. The estimated cost is \$20 million.
3. **US 301/SR 44 Intersection** - Construct north and southbound turn lanes (FM No. 430188). This is a privately funded project. Bids are to be received in FY 13/14. The estimated cost is \$130,000.
4. **US 301** - Widening from two to four lanes SR 35 (US 301) from CR 470 to SR 44 Design Phase FY 17/18 (FM No. 430132)
5. **I-75 at CR 514 from 0.5 miles W. of I-75 to US 301** – An environment study (PD&E) FY 2014/15. (FM435476-1)
6. **CR 466** - A \$1.6 million grant (CIGP/SCRA) to Sumter County in FY 14/15 is to pay for resurfacing along the 4.5 miles from US 301 to just east of CR 475 (FM No. 428443).
7. **CR 466/US 301 Intersection** - Construct north and southbound turn lanes (FM No. 430187). This is a privately funded project. Bids are to be received in FY 13/14. The estimated cost is \$180,000.
8. **CR 475** - A \$3.26 million grant to Sumter County in FY 16/17 will pay for construction of paved shoulders and resurfacing along the 3.7 miles from CR 470 to CR 542, including replacement of the timber column bridge at Jumper Creek with concrete box culverts (FM No. 429944-1). Construction programmed in FY 2017/18
9. **CR 673** – A \$2.032 million grant (FY 2017/18) to Sumter County to widen lanes, pave shoulders and resurfacing from .8 miles west of US 301 to I-75. FM# 433670-1. Construction programmed in FY 2018/19.

MINUTES

Lake~Sumter Metropolitan Planning Organization Citizens' Advisory Committee (CAC) Meeting

Wednesday, September 10, 2014
Lake~Sumter MPO
1616 South 14th Street, Leesburg, Florida

OPENING

Vice-Chairman Jamie Hanja called the meeting to order at 4:00 p.m. who noted that the meeting was properly noticed and that a quorum was present. All present stated their name and affiliation.

Members Present

Steve Ferrell, Chairman (<i>arrived late</i>)	Lake County, D1
Brian Herman	Lake County, D2
Jamie Hanja, Vice-Chairman	Lake County, D4
Richard Nelson	Lake County, D5
Doug Tharp	Sumter County
Iris Alfonso	Sumter County
Susy Gibson	City of Clermont
Don Griffey	City of Eustis
John Schaller	City of Fruitland Park
Regis LeClerc	Town of Lady Lake
David Clutts	City of Tavares
Stephen Stone	City of Wildwood

Members Absent

Ted Wicks	Lake County, D3
Bonnie Nebel	Town of Howey-in-the-Hills
Peni Berger	City of Mount Dora

Staff Present

Pam Richmond	MPO Project Manager
Mike Woods	Transportation Planner
Sue Goldfuss	Executive Assistant/Recording Secretary

Others Present

Vickie Wyche	FDOT
--------------	------

REPORTS

A. Florida Department of Transportation

Ms. Vickie Wyche, MPO Liaison, stated she had no update on the construction projects in the Lake and Sumter area. Vice-Chairman Hanja asked what work was being done on SR 19 under the overpass for US 27. UPDATE: Maintenance is regarding sodding the shoulders to bring them up to current standards on SR 19 from Groveland to Howey-in-the-Hills.

B. Florida's Turnpike Enterprise

None

C. County Reports

None

D. MPO Staff

Pam Richmond reported Sumter County has hired Richard Baier as the new Public Works Director, and he attended the Technical Advisory Committee meeting. Mike Woods announced the Horrible Hundred bicycle event scheduled in South Lake in November and asked if anyone knew of any construction or road work in the area.

Chairman Steve Ferrell arrived at this time and the gavel was passed by Vice-Chairman Hanja.

E. CAC: Members Comments and Reports

None

AGENDA UPDATE

None

COMMENTS FROM THE GENERAL PUBLIC

None

ACTION ITEMS

A. August 13, 2014 Meeting Minutes

MOTION was made by Jamie Hanja to approve the August 13, 2014 minutes; seconded by David Clutts -- **motion passed 12-0.**

B. Recommend Approval to Amend FY 2014/15 – 2018/19 Transportation Improvement Program

Ms. Richmond explained the annual amendment of roll forward projects requested by FDOT as well as the inclusion of the Lake County and Sumter County newly adopted programs. The TAC noted a correction needed on line 62 of the resolution. The US 441 project is in Leesburg and not Mount Dora. Sue Goldfuss advised the final Lake County Transportation Construction Program was not received in time for the online agenda; however, a hard copy has been provided to the CAC. **MOTION** was made by Susy Gibson to recommend approval to Amend FY 2014/15 – 2018/19 TIP with the noted correction; seconded by David Clutts -- **motion passed 12-0.**

C. Appoint Project Prioritization Subcommittee Members

Ms. Richmond briefed the CAC on the role of the Project Prioritization Subcommittee and what would be expected of the individual appointed. She advised the three TAC appointees were each from Lake County cities, and she requested a Sumter County representative for the CAC. After a brief discussion, Doug Tharp volunteered to be on the committee. **MOTION** was made by David Clutts to appoint Doug Tharp to the Project Prioritization Subcommittee; seconded by Richard Nelson -- **motion passed 12-0.**

D. Appoint Long Range Transportation Plan (LRTP) Subcommittee Members

Ms. Richmond explained the importance of the LRTP Subcommittee and what would be expected from the members. She advised who the three TAC appointees were and stated the commitment would be less than the previous subcommittee. After a brief discussion, Richard Nelson volunteered to be on the committee. **MOTION** was made by Doug Tharp to appoint Richard Nelson to the Project Prioritization Subcommittee; seconded by Brian Herman -- **motion passed 12-0.**

E. Recommend Approval of 2015 Central Florida MPO Alliance Regional Priorities

Mr. Woods stated the CFMPOA List of Regional Priorities approved for the first time last year was instrumental in getting funding for the Coast-to-Coast Trail. The CFMPOA approved the attached draft list in June, and they are expected to adopt at the October 10 meeting. He

September 10, 2014

reviewed the list of SIS Highway Projects, noting the focus for the Lake~Sumter MPO is on trails. **MOTION** was made by Susy Gibson to recommend approval of the 2015 Central Florida MPO Alliance Regional Priorities; seconded by David Clutts; Discussion regarding clarification of the SR 50 Alternatives Analysis on the list of Regional Transit Priorities is for Bus Rapid Transit -- **motion passed 12-0.**

DISCUSSION ITEMS

A. 2015 Legislative Positions

Staff reviewed the 2014 priorities approved by the governing board in January. A draft list for 2015 will be presented in October. The MPO's focus is on state level priorities, and the CAC was requested to advise if there is a new issue they would like addressed or possibly an old issue needing to be re-addressed. Brief discussion ensued regarding Close the Gaps, State Transportation Trust Fund and Charter County Surtax. Ms. Goldfuss will email the 2014 list to the CAC since copies were not provided.

B. CR 435 and Wekiva Parkway

Ms. Richmond gave an update on the project and the results of the study FDOT conducted. The Lake County BCC as well as the Orange County Commissioner for that district are in support of leaving the ramps. At the MPO's request, FDOT studied the Interchange at SR 429 & CR 435 and concluded the temporary ramps were not necessary and should be removed once the segment of SR 429 is complete to the Kelly Park Road Interchange. A map was shown on the screen, and Ms. Richmond gave a detailed explanation of the impact to the community of removing the ramps once the connection is open. Lengthy discussion ensued. The MPO will look to address the project in the 2040 Long Range Transportation Plan.

PROJECT UPDATES

A. US 441 Corridor Alternatives Analysis (Orange Blossom Express Study – Orlando to Golden Triangle)

Ms. Richmond gave a brief update stating the analysis is wrapping up, and there is a meeting tomorrow with the consultants. Ridership projections are dismal. There will be a series of three public meetings to present the report.

B. Lake-Orange Parkway (US 27 to SR 429) and Wellness Way Sector Plan (South Lake)

Ms. Richmond stated she is waiting on the Traffic & Revenue Study for the Lake-Orange Parkway, and the Wellness Way Sector Plan is still on hold.

C. I-75/CR 514 Interchange Planning (Sumter County near Coleman)

Ms. Richmond reported the Interchange Justification Report (IJR) has been delayed due to the change to the CR 468 Interchange. She explained funding changes that affected construction.

D. Minneola Interchange: Florida's Turnpike/North Hancock Road

The selection process of design-build will not be completed until May 2015; however, Lake County is still moving forward with the connector road.

E. Trails: Central Florida C2C Trail and Wekiva Trail

Mr. Woods reviewed the maps in detail. The Heart of Florida Loop is moving forward quicker than expected.

F. Villa City Development of Regional Impact (DRI)

Ms. Richmond gave a brief update on the DRI. She reviewed a map and discussed the roadway connectivity. The developer has regrouped and changed the land use, and she has not seen it yet.

September 10, 2014

G. Studies: US 301 PD&E Study, SR 50 Corridor Study

Ms. Richmond reported the US 301 PD&E Study is just getting started in Coleman. The SR 50 Corridor Study is a precursor to a PD&E Study, and will be an opportunity to address safety concerns.

CONFIRMATION OF REPRESENTATIVE ATTENDING GOVERNING BOARD MEETING

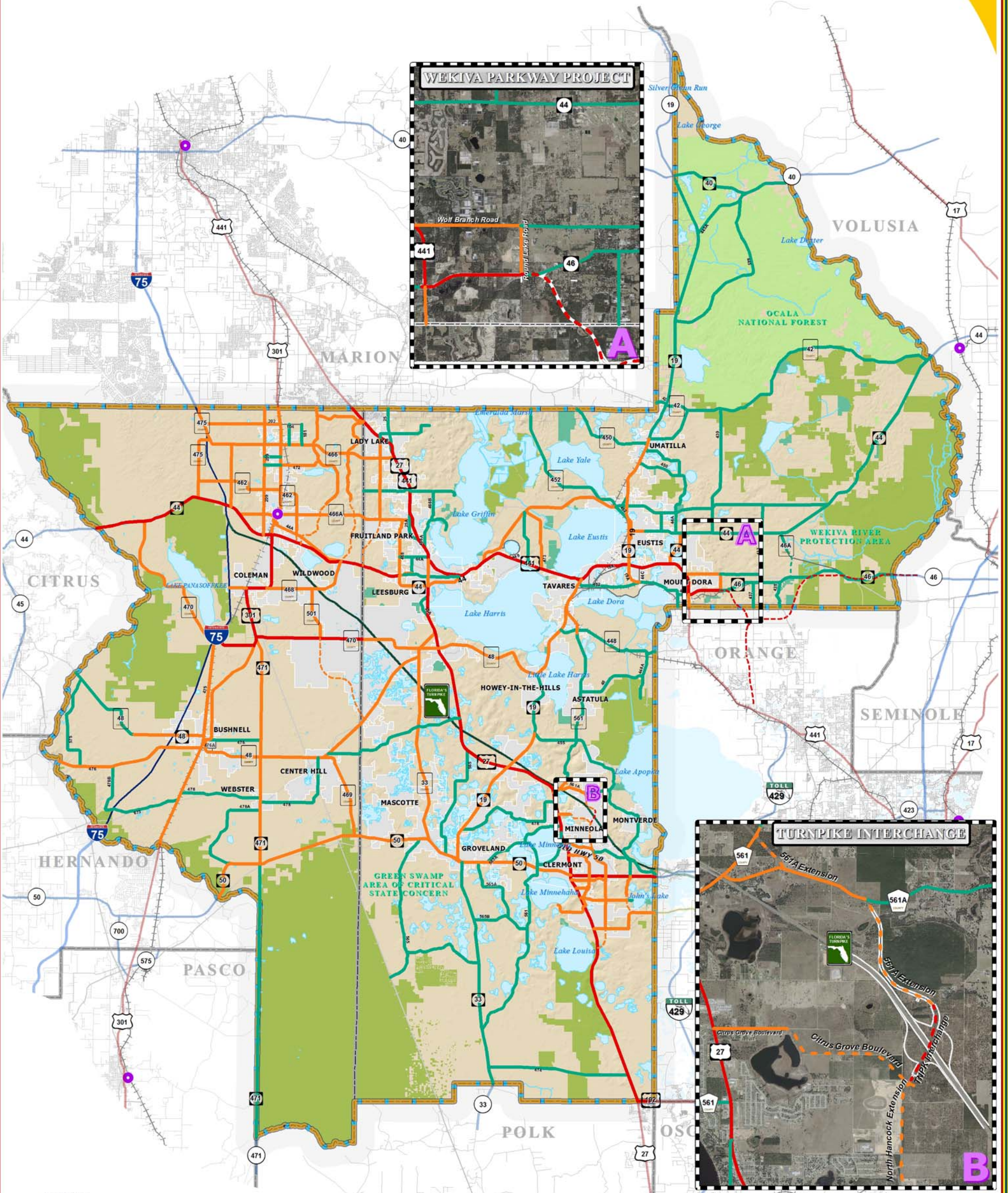
It was confirmed that Jamie Hanja would be the CAC representative attending the Governing Board meeting on September 24, 2014 at 2 pm at the Lake~Sumter MPO.

ADJOURNMENT

As there was no further business, the meeting adjourned at 5:05 p.m.

Steve Ferrell, Chairman

ADOPTED MAXIMUM LANE CONSTRAINED CORRIDORS



LEGEND

- Water Body
- Municipal Area
- County Delineation
- Lake-Sumter MPO Boundary
- Public Lands Managed by Federal Agency
- Public Lands Managed by State Agency
- Public Lands Managed by Local Agency
- Amtrak Station
- Active Railroad
- Abandoned Railroad
- County Road
- State Road
- US Highway
- Interstate
- Turnpike

LakeSumter MPO Adopted Lane Constrained Corridors

- 6 Lanes
- 4 Lanes
- 2 Lanes
- FUTURE 6 Lanes
- FUTURE 4 Lanes
- FUTURE 2 Lanes

The corridors displayed on this map, as adopted by the Lake Sumter MPO, addresses the lane constraints for state and county roads, designated collector status and above. Corridors that are constrained by this policy are so designated in an effort to accomplish one or more of the following:

- a) To preserve rural character in areas where existing conditions and land use designations do not require the need for additional capacity
- b) To limit the extent to which corridors will be widened in order to prevent roadways from becoming dividing factors within communities or to prevent widening projects causing the erosion of viable neighborhoods or districts
- c) To enhance the regional transportation network, spread demand for transportation capacity and maximize access to communities and centers
- d) To promote the goal of migrating away from capacity improvements through the addition of lanes and to promote the migration toward additional capacity through mass transit improvements along appropriate arterial corridors
- e) To prevent a misallocation of fiscal resources toward lane-addition projects in which cost-benefit ratios are low in terms of cost versus new capacity

NOTE:

Please observe that these lane constraints apply only to through lanes and do not apply to turn lanes, auxiliary lanes and exclusive-transit lanes.

FOR COMPLETE AND DETAILED LIST OF THE CONSTRAINT CORRIDORS, PLEASE REFER TO POLICY #2009-1 LANE CONSTRAINED CORRIDORS.



TRANSPORTATION PLANNING AREA SUMTER AND LAKE COUNTY, FLORIDA



DATA SOURCES:
Lake and Sumter County GIS Department, Planning Services
Public Lands Florida Managed Areas, (FLSMA)
Florida Statewide Areas Inventory (FLSAI) Data
Data Completion and Map production courtesy of the Lake-Sumter Metropolitan Planning Organization

This map product was prepared from a GIS project that was developed and maintained by the Lake-Sumter Metropolitan Planning Organization and its employees, agents and consultants under the direction and supervision of the Lake-Sumter Metropolitan Planning Organization. The Lake-Sumter Metropolitan Planning Organization and its employees, agents and consultants do not warrant the accuracy, reliability, or completeness of the information contained on this map product. Independent verification of all data contained on this map product should be obtained from the source of the data.

MAP COMPOSITION:
SEPTEMBER, 2009



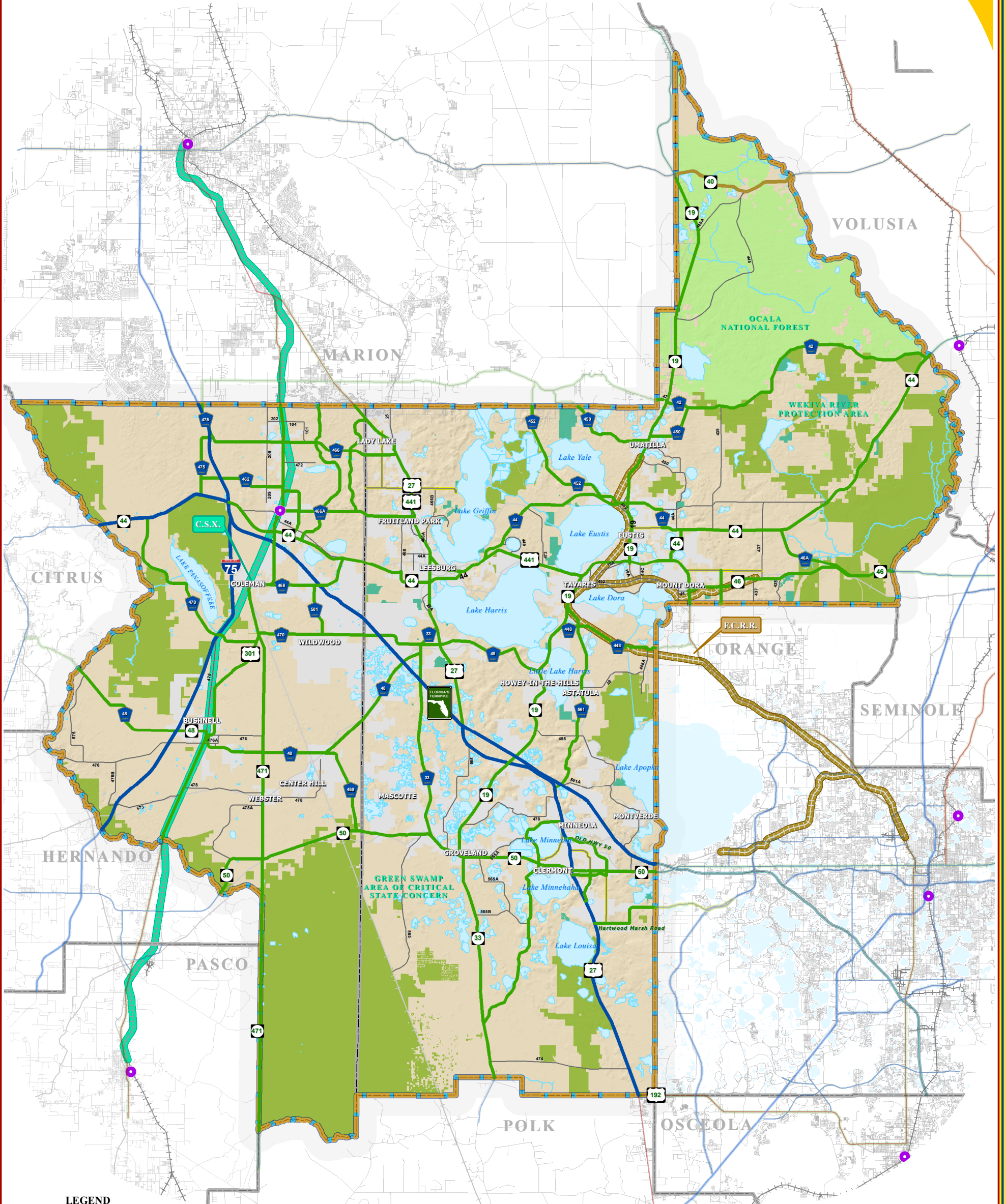
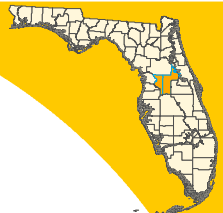
**TABLE 1
LAKE-SUMTER MPO REGIONALLY SIGNIFICANT CORRIDORS**

CORRIDOR	FROM	TO
C-462	C-475	C-466A
C-466/CR 466	SR 93/I-75	SR 25/US 27 (SR 500/US 441)
C-466A/CR 466A	SR 35/US 301	SR 25/US 27 (SR 500/US 441)
C-468	SR 35/US 301	SR 44
C-469	C-48	SR 50
C-470	SR 44	SR 35/US 301
C-470	SR 35/US 301	SUMTER/LAKE COUNTY LINE
C-475	SR 44	SUMTER/MARION COUNTY LINE
C-48	CITRUS/SUMTER COUNTY LINE	SUMTER/LAKE COUNTY LINE
CR 139/POWELL RD	SR 44	C-466A
CR 33	SR 25/US 27	SR 50
CR 42	MARION/LAKE COUNTY LINE	SR 44
CR 44	SR 500/US 441	ORANGE AVE
CR 448	SR 19	LAKE/ORANGE COUNTY LINE
CR 450	MARION/LAKE COUNTY LINE	CR 42
CR 452	MARION/LAKE COUNTY LINE	SR 19
CR 46A	SR 44	SR 46
CR 470	SUMTER/LAKE COUNTY LINE	CR 33
CR 48	SUMTER/LAKE COUNTY LINE	SR 19
CR 501	C-468	C-470
CR 561	SR 19	SR 25/US 27
CR 561	US 27	SR 33
CR OLD 50	SR 25/US 27	NORTH HANCOCK RD
CITRUS TOWER BLVD	US 27	SR 50
HARTWOOD MARSH ROAD	SR 25/US 27	LAKE/ORANGE COUNTY LINE
HOOKS ST	SR 25/US 27	SOUTH HANCOCK RD
NORTH HANCOCK RD	CR OLD 50	SR 50
SOUTH HANCOCK RD	SR 50	HOOKS ST
BUENA VISTA BLVD	SR 44	SUMTER/MARION COUNTY LINE
MORSE BLVD	C-466A	US 27/441
ROUND LAKE RD	LAKE/ORANGE COUNTY LINE	WOLF BRANCH RD
SR 19	SR 50	LAKE/MARION COUNTY LINE
SR 25/US 27	MARION/SUMTER COUNTY LINE	LAKE/POLK COUNTY LINE
SR 33	POLK/LAKE COUNTY LINE	CR 33
SR 35/US 301	HERNANDO/SUMTER COUNTY LINE	SUMTER/MARION COUNTY LINE
SR 40	MARION/LAKE COUNTY LINE	LAKE/VOLUSIA COUNTY LINE
SR 44	CITRUS/SUMTER COUNTY LINE	LAKE/VOLUSIA COUNTY LINE
SR 46	SR 500/US 441	LAKE/SEMINOLE COUNTY LINE
SR 471	SR 35/US 301	SUMTER/POLK COUNTY LINE
SR 50	HERNANDO/SUMTER COUNTY LINE	LAKE/SUMTER COUNTY LINE
SR 50	LAKE/SUMTER COUNTY LINE	LAKE/ORANGE COUNTY LINE
SR 500/US 441	MARION/SUMTER COUNTY LINE	LAKE/ORANGE COUNTY LINE
SR 530/US 192	SR 25/US 27	LAKE/ORANGE COUNTY LINE
SR 91 /FL TURNPIKE	SR 93 (I-75)/SUMTER COUNTY LINE	LAKE/SUMTER COUNTY LINE
SR 91 /FL TURNPIKE	LAKE/SUMTER COUNTY LINE	LAKE/ORANGE COUNTY LINE
SR 93/I-75	HERNANDO/SUMTER COUNTY LINE	SUMTER/MARION COUNTY LINE

ADOPTED : 09/28/2005
LAST AMMENDED: 01/26/2011



ADOPTED REGIONALLY SIGNIFICANT CORRIDORS



LEGEND

- Water Body
- Municipal Area
- County Delineation
- Lake-Sumter MPO Boundary
- Public Lands Managed by Federal Agency
- Public Lands Managed by State Agency
- Public Lands Managed by Local Agency
- County Road
- State Road
- US Highway
- Interstate
- Turnpike
- Amtrak Station
- Active Railroad
- Abandoned Railroad

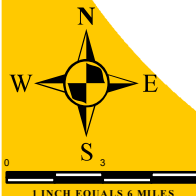
ADOPTED REGIONAL CORRIDOR CLASSIFICATION

- Regionally Significant Corridor
- Strategic Intermodal System
- Emerging
- Strategic Intermodal System
- Regionally Significant Rail Corridor - C.S.X.
- Emerging Regionally Significant Rail Corridor - F.C.R.R.

ADOPTED: SEPTEMBER 28, 2005
 REVISED: JANUARY 25, 2006
 REVISED: APRIL 26, 2006
 REVISED: APRIL 25, 2007
 REVISED: DECEMBER 3, 2008
 REVISED: MAY 26, 2010
 REVISED: DECEMBER 8, 2010
 REVISED: JANUARY 26, 2011

NOTE:

Corridors may be eligible for Transportation Regional Incentive Program (TRIP) funding.



TRANSPORTATION PLANNING AREA SUMTER AND LAKE COUNTY, FLORIDA



DATA SOURCES:
 Lake and Sumter County GIS Department, Planning
 Public Lands Florida Managed Areas (FLMA)
 Florida Natural Areas Inventory (FNAI) Data
 Data Compilation and Map Production compliments of the
 Lake-Sumter Metropolitan Planning Organization

MAP COMPOSITION:
 JANUARY, 2011

This map product was prepared from a Geographic Information System established by the Lake-Sumter Metropolitan Planning Organization and Lake County Board of County Commissioners. Its employees, agents and personnel make no warranty as to its accuracy, and in particular its accuracy as to the following: dimensions, contents, property boundaries, or placement or location of any single feature thereon. The Lake-Sumter Metropolitan Planning Organization and Lake County Board of County Commissioners, its employees, agents and personnel MAKE NO WARRANTY OF MERCHANTABILITY OR FITNESS FOR PURPOSES FOR USE FOR A PROJECT, OR PURPOSE, IN PRESS OR UNPUBLISHED WITH RESPECT TO THIS MAP PRODUCT. Indemnification of all data contained on this map product shall be obtained by the user of this map.

\\LAKESUMTERMPO\gis\RegionallySignificantCorridors_LSMPO_11x17.mxd - 1/31/2011 @ 4:35:23 PM



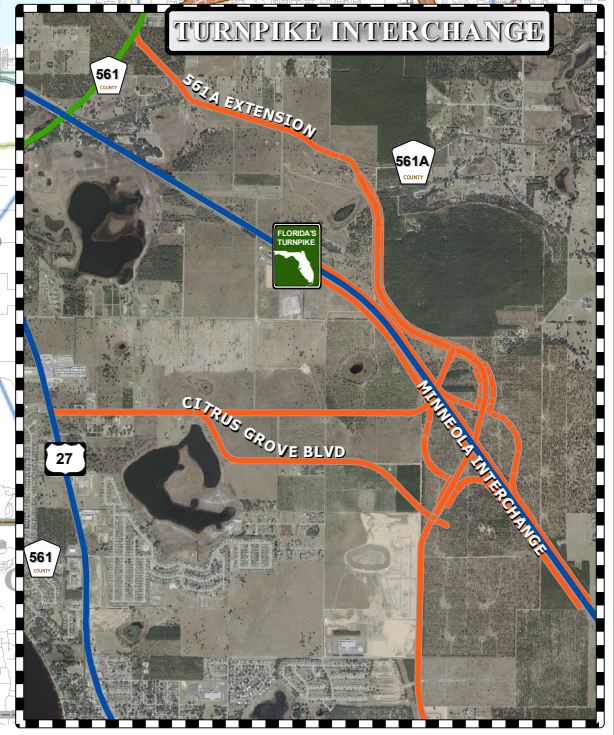
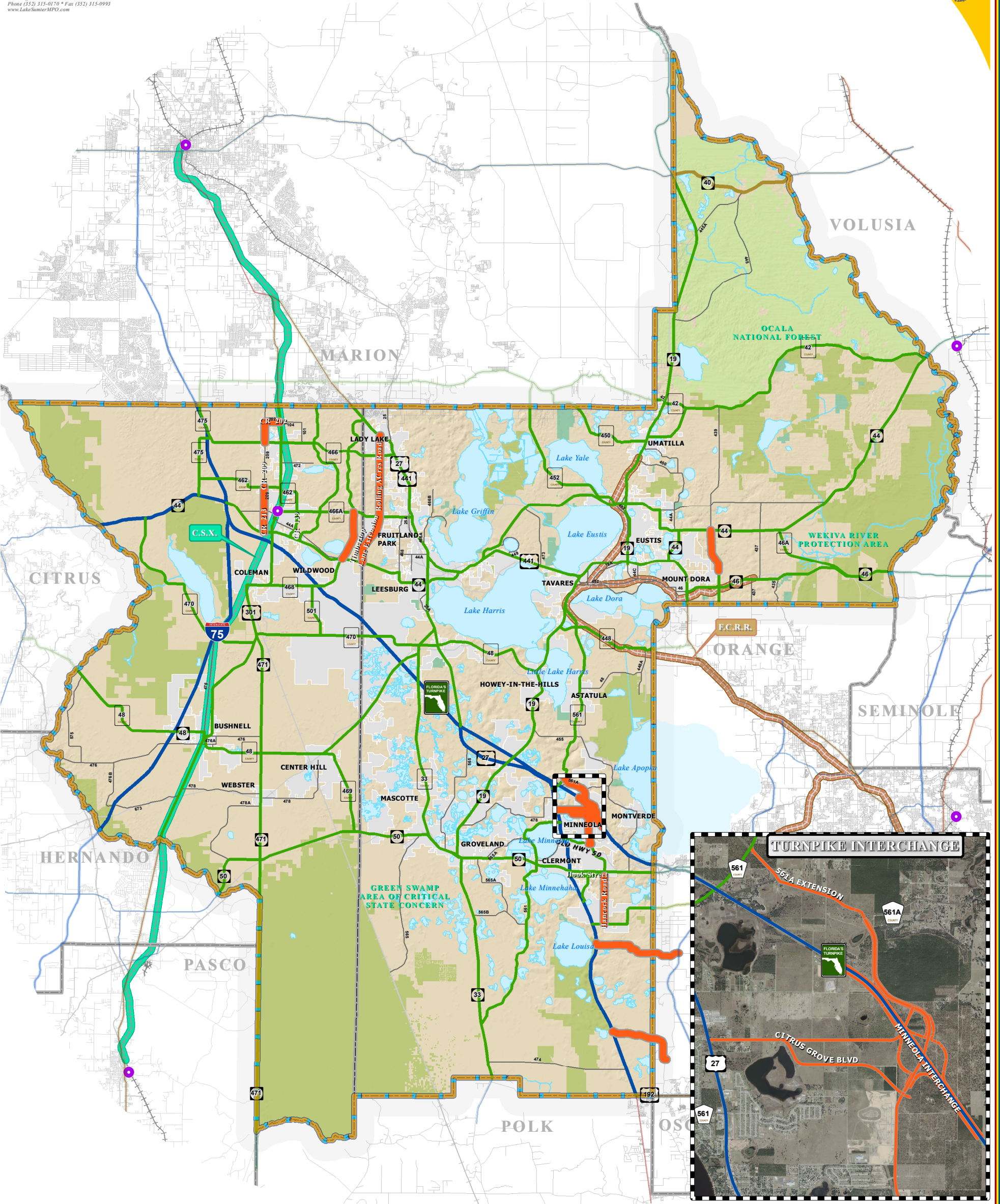
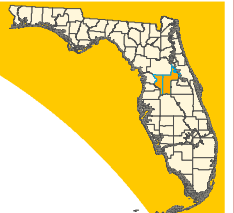
TABLE 1
LAKE-SUMTER MPO EMERGING REGIONALLY SIGNIFICANT CORRIDORS

CORRIDOR	FROM	TO
561A EXTENSION	CR 561	MINNEOLA INTERCHANGE (FUTURE INTERCHANGE)
CR 202	US 301	CR 209
CR 209	CR 202	CR 466
CR 209	CR 462	CR 44A
CR 213	CR 44A	SR 44
CITRUS GROVE BLVD	US 27	MINNEOLA INTERCHANGE (FUTURE INTERCHANGE)
HANCOCK ROAD	HOOKS STREET	HARTWOOD MARCH ROAD
MINNEOLA INTERCHANGE	CITY OF MINNEOLA	CITY OF MINNEOLA
NORTH GRASSY LAKE ROAD	CITRUS GROVE ROAD (FUTURE ROAD)	MINNEOLA INTERCHANGE (FUTURE INTERCHANGE)
NORTH HANCOCK EXTENSION	OLD HWY 50	MINNEOLA INTERCHANGE (FUTURE INTERCHANGE)
OLD HWY 50	SOUTH OLD HWY 50	NORTH HANCOCK EXTENSION
ROLLING ACRES ROAD	US 441/27	TIMBERTOP LANE EXTENSION
ROUND LAKE EXTENSION	SR 44	WOLF BRANCH ROAD
SOUTH MORSE BLVD EXTENSION	SR 44	C-466A
SAWGRASS BAY BLVD	US 27	LAKE-ORANGE COUNTY LINE
LAKE ORANGE PARKWAY	US 27	SR 50
TIMBERTOP LANE EXTENSION	ROLLING ACRES ROAD	SR 44

ADOPTED : February/2009
 LAST AMMENDED: January 26, 2011



EMERGING REGIONALLY SIGNIFICANT CORRIDORS



LEGEND

- Water Body
- Municipal Area
- County Delineation
- Lake-Sumter MPO Boundary
- Public Lands Managed by Federal Agency
- Public Lands Managed by State Agency
- Public Lands Managed by Local Agency
- Amtrak Station
- Active Railroad
- Abandoned Railroad
- County Road
- State Road
- US Highway
- Interstate
- Turnpike

Emerging Regionally Significant Corridors

- Adopted Regional Corridor Classification**
- Regionally Significant Corridor
 - Strategic Intermodal System
 - Emerging Strategic Intermodal System
 - Regionally Significant Rail Corridor - C.S.X.
 - Emerging Regionally Significant Rail Corridor - F.C.R.R.

ADOPTED: SEPTEMBER 28, 2005
REVISED: JANUARY 25, 2006
REVISED: APRIL 26, 2006
REVISED: APRIL 25, 2007
REVISED: DECEMBER 3, 2008
REVISED: MAY 26, 2010
REVISED: DECEMBER 8, 2010
REVISED: JANUARY 26, 2011

NOTE:
Corridors may be eligible for Transportation Regional Incentive Program (TRIP) funding.



TRANSPORTATION PLANNING AREA SUMTER AND LAKE COUNTY, FLORIDA



DATA SOURCES:
Lake and Sumter County GIS Department, Planning
Public Lands (Florida Managed Areas, (FLMA)
Florida Natural Areas Inventory (FNAI) Data, 2008
Data Compilation and Map production compliments of the
Lake-Sumter Metropolitan Planning Organization.
This map product was prepared from a Geographic Information System established by the Lake-Sumter Metropolitan Planning Organization and Lake County Board of County Commissioners. Its employees, agents and personnel make no warranty as to its accuracy, and in particular its accuracy in showing, dimensions, contents, property boundaries, or placement or location of any map features thereon. The Lake-Sumter Metropolitan Planning Organization and Lake County Board of County Commissioners, its employees, agents and personnel MAKE NO WARRANTY OF MERCHANTABILITY OR FITNESS FOR PURPOSES FOR USE, FOR A PROJECT, OR PURPOSE, EXPRESS OR IMPLIED WITH RESPECT TO THIS MAP PRODUCT. Independent verification of all data contained on this map product should be obtained by the user of this product.

MAP COMPOSITION:
JANUARY, 2011



Lake~Sumter Metropolitan Planning Organization 2015 Draft Legislative Positions

October 2014

STATEWIDE TRANSPORTATION FUNDING

1. Index Local Option Fuel Taxes

The State of Florida long ago passed legislation to index state fuel taxes according to the Consumer Price Index. State gas taxes increase in Florida each year at a reasonable rate due to this indexing. Legislation is needed to provide the same annual indexing for local option fuel taxes. Fuel tax revenues for local projects have been affected by decreases in fuel consumption and a flattening of the revenue stream. Indexing would allow a more dependable revenue source for local transportation projects.

2. Amend Statute Regarding Charter County and Regional Transportation System Surtax

The current legislation allows an up-to-one-percent surtax, or sales tax, to be taken before voters as a referendum to fund transportation projects. The law has evolved through the last 25 years for the voter-enabled surtax to now be eligible to all 24 charter counties, as well as to any non-charter county that is part of a Regional Transportation Authority, resulting in 33 eligible urban counties. The transportation surtax is an appropriate referendum option for all Florida urban counties and, as a matter of statewide equity, should be extended to all urban counties served by a metropolitan planning organization. This would raise the number of eligible counties to approximately 40, including Lake and Sumter counties. The position has been supported by the Florida Association of Counties. During the 2013 session, the Florida League of Cities supported a bill that would expand eligibility to municipalities with a population of at least 150,000.

3. Enhance and Protect the State Transportation Trust Fund

In recent years, the Florida Legislature diverted massive funding levels from the State Transportation Trust Fund to balance the General Fund. \$6 billion in FDOT projects were deleted, totaling more than an entire fiscal year worth of projects. Such diversions of funds will result in the degradation of the state's transportation system and will dilute Florida's ability to be globally economically competitive.

5. Enhance and Protect the Transportation Disadvantaged Trust Fund

The Transportation Disadvantaged Trust Fund provides Florida's most vulnerable population access to medical services, nutrition, jobs and educational opportunities. With state-mandated changes in the coordinated system forthcoming regarding Medicaid trips, Florida counties have challenges ahead that will be exacerbated by funding diversions.

STATEWIDE POLICY

- 1. Continue Direction of State Transportation Dollars to the Central Florida Coast-to-Coast Trail**

The Central Florida Coast-to-Coast Trail from Titusville to St. Petersburg is 75 percent constructed with multiple gap segments advancing to the next phase of development. The legislature and governor this past session directed a minimum of \$15.5 million in FY 2014/15 to the development of the C2C Trail. By providing another infusion of state funds into the trail development, the C2C Trail can be expedited.
- 2. Monitor Legislation on Developments of Regional Impact (DRIs)**

Legislation was proposed last session that would further dilute the laws guiding DRIs. Proponents of removing or reducing the DRI statutes claim that the local comprehensive planning process is adequate to address large developments. Meanwhile, planning proponents contest that DRI laws result in a much better planned regional development.
- 3. Weight Limits Maintained for Commercial Trucks on State Facilities**

In 2010, the Florida Legislature raised truck weight limits on state roads from 80,000 to 88,000 pounds. Nationwide, "pilot projects" continue to push the envelope in terms of allowable weights on state and federal roads, with some states allowing 97,000 to potentially as much as 110,000 pound truck weights – this is without the provision of additional funding to mitigate the impacts of heavier vehicles on roads and especially bridges. The MPO supports maintaining the current weight limits and encourages an assessment of fiscal impact of the recent increase in allowable truck weights on the FDOT.
- 4. Support a Statewide Comprehensive Rail System**

Florida is in need of a comprehensive rail plan that maximizes economic development potential of freight rail while planning for the provision of expanded passenger rail services in urban metropolitan areas and between metro areas.
- 4. Transportation Related Legislation**

With the removal of state-mandated transportation concurrency, the MPO supports legislation that strengthens home-rule rights of local governments regarding regional transportation partnerships and empowers local governments with funding and financing options.

REGIONAL PROJECTS

1. Sumter County CR 514 Interchange with I-75

State support is sought for an economic development initiative tied to new access in Sumter County via a potential interchange with I-75 just west of Coleman. With state support in planning and funding the infrastructure to make the new connection to I-75, a major landholding would be catalyzed for private industrial development centered around freight rail and interstate access. The CSX S-Line runs through the property adjacent to the potential interchange at CR 514.

2. 470 Corridor (Sumter and Lake Counties)

The 470 Corridor, which includes C-470 in Sumter County and CR 470 and CR 48 in Lake County, is an east-west regionally-significant corridor that connects I-75, the CSX S-Line and US 301 in Sumter County east to Florida's Turnpike and US 27 in Lake County. The corridor is a premier candidate for economic development relative to the central location and the major transportation infrastructure it connects. State funding is sought to improve the corridor to four lanes from I-75 east to US 27.

3. Lake County CR 466A, Phase 3, Widening in Fruitland Park

The east-west regionally-significant county road connects The Villages east through Fruitland Park to US 27/441. Widening to four lanes has advanced such that two phases are now funded for construction. State funding is sought for the final phase, which is less than two miles in length.

4. Round Lake Road (Lake County)

With the Wekiva Parkway project moving closer to reality, the new SR 46 from the new SR 429 will be complete in 2019. Round Lake Road provides north-south access to SR 46 and the future Wekiva Parkway. Round Lake Road could provide more effective access if the roadway were to be extended two miles north to SR 44, thus opening regional access for much of eastern Lake County. State support is sought for this future regionally-significant corridor.



Lake~Sumter Metropolitan Planning Organization Draft 2015 Legislative Priorities

October 2014

- 1. Index Local Option Fuel Taxes**
- 2. Continue Direction of State Transportation Dollars to the Central Florida Coast-to-Coast Trail**
- 3. Enhance and Protect the State Transportation Trust Fund and the Transportation Disadvantaged Trust Fund**
- 4. Amend Statute Regarding Charter County and Regional Transportation System Surtax to create equity among urban counties**