

**MAY 2017**

Contact: [Vickie.Wyche@dot.state.fl.us](mailto:Vickie.Wyche@dot.state.fl.us)

(386) 943-5185

**LAKE COUNTY  
CONSTRUCTION IN PROGRESS**

**238422-1-52-01**

**SR 25/US 27 from N. Boggy Marsh Road to N. of Lake Louisa Road. Add lanes and reconstruct**

Estimated completion date: 967

Ranger Construction

Project cost: \$37,503,443.23

ESTIMATE COMPLETION DATE: SEPTEMBER 2018 – 46% COMPLETE

**LANE CLOSURES:**

March 5, 2017 to October 18, 2018

SB inside lane closure on US 27 from south of Marguax Dr. to north of Lake Louisa Rd. – 24-hours a-day

March 5, 2017 to October 18, 2018

NB outside lane closure on US 27 South of Margaux Drive to north of Lake Louisa Road for 24-hours a day. The single lane configuration on both NB and SB will remain until the project is completed in Winter of 2018.

**435434-1-52-01**

**SR 25/US 27 and SR 50 Interchange – Landscaping in Lake County**

Estimated completion date: August 18, 2017 (Establishment period ends) –86% complete

Dynamics Group, Inc.

Project cost: \$243,390

**LANE CLOSURES:** No Lane closures anticipated

Lake County reviewing Transition Plan for take-over maintenance after the 2-year Landscape Establishment period.

**MAY 2017**

Contact: [Vickie.Wyche@dot.state.fl.us](mailto:Vickie.Wyche@dot.state.fl.us)

**(386) 943-5185**

**LAKE COUNTY**  
**Other Projects Pending**

1. **SR 500 (US 441) from Lake Ella Road to Avenida Central** - Reconstruction project to 6-lane US 441 from Lake Ella Road to Avenida Central (FM 238395-5). Construction funded FY 2020 estimate \$33 million.
2. **SR 500 (US 441) from Perkins Street to SR 44** (FM238394-3) Construction not funded.
3. **SR 500 (US 441) from SR 44 to S. of SR 46** - Design FY 2014/16 and Right-of-Way FY 2017/2022. (FM 429356-1) 429356-2 US 441 Utility Relocation, JPA with City of Mt. Dora FY 2017. Construction not funded
4. **SR 44 (CR 44B) from SR 500 (US 441) to SR 44** - Design for four-laning the two miles from US 441 to SR 44 is in progress (FM No. 409870-1). Right of way FY 2014/16. Construction not funded.
5. **SR 19 from CR 48 to CR 561** - An environmental study (PD&E complete 4/2015) into possible widening along the 4.7 miles from CR 48 to CR 561 (FM No. 238319-1). Design estimate \$2.9 million in FY 2014/17. Construction not funded
6. **CR 466A (Miller St.) Lake-Sumter County Line to US 27** - A \$8.7 million TRIP grant to Lake County Right-of-Way funds in FY 2014 (FM 430253-1). Construction on Segment (2). JPA with Lake County (ROW ) 2014
7. **CR 466A (Miller St.) from US 27 to Sunny Court** – A \$5.0 million grant for construction from US 27 to Sunny Court (FM No. 430253-2) in FY 2015. JPA with Lake County.
8. **CR 466A (Miller Street) Phase 3 from Cut-off Road to Sunny Court** - \$2.5 million grant for Right-of-Way in Fiscal Year 2016 (FM 430253-3). LAP with Lake County. (Construction on FM430253-4).

**MAY 2017**

Contact: [Vickie.Wyche@dot.state.fl.us](mailto:Vickie.Wyche@dot.state.fl.us)

(386) 943-5185

**SUMTER COUNTY  
CONSTRUCTION IN PROGRESS**

**242626-2-52-01:**

**I-75 Improvements from North of Hernando County Line to South of CR 470.**

**Widen I-75 from four (4) lanes to six (6) lanes, complete interchange construct at State Road 48 (Exit 314) new ramps at the CR 476B/CR 673 (Exit 309 Interchange) Intelligent Transportation Systems (ITS) improvements. Drainage, guardrail, signing and pavement markings, signalization, milling and resurfacing, and miscellaneous structures.**

**Estimated completion date: Complete – FINAL ACCEPTED ON 4/21/2017**

The Middlesex Corporation

Project cost: \$76.9 million

**LANE CLOSURES:**

**242626-3-52-01:**

**I-75 from South of CR 470 to SR 91 (FL Turnpike) in Sumter County**

Widening of 4-lane divided Highway to 6-lane divided Highway

**Estimated completion date: October 2017 - 82% complete**

Project cost: \$43.1 million

**LANE CLOSURES:** No Lane closures anticipated

**240418-2:**

**SR 48 from E. of I-75 Ramps to CR 475 (Main Street) – Add Lanes and Rehabilitate Pavement**

**Estimated completion date: August 2017 – 81%**

**LANE CLOSURES:** No Lane closures anticipated.

**433959-1:**

**State Road 35/US 301 begins south of Cherokee Avenue and ends just north of Noble Avenue. (Bushnell)**

**Estimated completion date: Summer 2017**

Milling and resurfacing the four-lane, undivided roadway and parking shoulders, and providing sidewalk improvements at several locations to meet ADA requirements

Project cost: \$8.8 mill

**LANE CLOSURES:** No Lane closures anticipated.

**434456-1:**

**SR 471 at CR 528 – Add Turn Lanes in Sumter County**

**Northbound and South Left Turn Lanes at the Intersection**

**Estimated completion date: May 5, 2017 – 99%**

**LANE CLOSURES:** No Lane closures anticipated.

**MAY 2017**

Contact: [Vickie.Wyche@dot.state.fl.us](mailto:Vickie.Wyche@dot.state.fl.us)

**(386) 943-5185**

**Other Projects Pending**

1. **SR 35 (US 301) from CR 470 to SR 44** - Widening from two to four lanes Design Phase FY 2017/20 (FM No. 430132-1).
2. **I-75 at CR 514 from 0.5 miles W. of I-75 to US 301** – Environmental study (PD&E) FY 2017. (FM435476-1)
3. **CR 466W from CR 209 to US 301** – A \$1.6 million grant to Sumter County in FY 2015 for resurfacing existing pavement (Super Pave), remark Pavement and Sod. JPA with Sumter County (FM No. 428443-1).
4. **CR 475 from C-470 to CR 542** - A \$3.26 million grant to Sumter County in FY 2015/16 for construction of paved shoulders and resurfacing along the 3.7 miles from CR 470 to CR 542, including replacement of the timber column bridge at Jumper Creek with concrete box culverts (FM No. 429944-1). JAP with Sumter County
5. **CR 673 from US 301 to I-75** – A \$2.032 million construction grant (FY 2017/18) to Sumter County to widen lanes, pave shoulders and resurfacing from .8 miles west of US 301 to I-75. (FM 433670-1). JPA with Sumter County.

**PUBLIC WORKS DEPARTMENT**

**PROJECT SUMMARY - April 25, 2017**

**SUMTER COUNTY ROADWAY PROJECTS UPDATE**

ROADS	SCOPE	*PHASE	PROJECT BUDGET (FY 2017)
1 C-466W Widening	This roadway widening project includes reconstruction of approximately one mile of roadway from CR 209 to US 301 within the City limits of Wildwood. The final roadway configuration will include one travel lane in each direction, bi-directional center turn lane, and a bike lane and sidewalk on both sides of the roadway. Substantial completion is set for 5/15/17.	C	\$4,010,020
2 C-468 Widening from US 301 to CR 505	This roadway widening project includes reconstruction of approximately 1.7 miles of roadway from US 301 to CR 505. The final roadway configuration will include a four-lane divided urban typical section with sidewalks and bicycle lanes. The project is being coordinated with the Wildwood Springs DRI site planning process, and shared pond/developer access locations have been determined. The design was completed, and Rights-of-Way (ROW) acquisition started in January 2016. Duke Energy pole relocation commenced 3/8/17 and is underway.	C	\$8,143,266
3 C-475 from C-470 E to CR 542	This project involves milling and resurfacing of C-475S from C-470 to CR 542. Scope also includes adding 4' paved shoulders and replacing the bridge over Jumper Creek and includes a 12 inch water main interconnection design. Design by Kimley-Horn and Associates. 100% plans due 4/17. Final plans due 5/17. Construction 8/17 through 12/18.	D	\$503,665
4 C-470, C-475N, and C-575 Safety Improvements	The design by HDR of safety improvements to C-470 between CR 424 and Wilderness Drive (0.6 miles); C-475N between SR 44 and the Marion County line (6.3 miles); and C-575 between C-476W and C-48W (along 0.8 miles of curves). These safety improvements include adding paved shoulders, installing raised pavement markers, installing edge line rumble strips, and other related safety improvements. 80% plans submitted 12/16. 100% plans submitted 2/17. LAP Agreement for construction to BOCC 6/17. Construction 10/17 through 12/18.	D	\$401,000
5 C-478 from US 301 to SR 471	This 5.5 miles of roadway is scheduled to be resurfaced once funding has been identified by FDOT. Funding of construction is expected to be through an FDOT CIGP grant in FY 2019.	PL	\$750,000
6 South Buena Vista Boulevard	This roadway will be milled and resurfaced from the North Odell Circle/Bailey Trail roundabout to the South Odell Circle roundabout (9000'). This work is scheduled to occur once funding has been identified by FDOT. Funding of construction is expected to be through an FDOT CIGP grant in FY2018.	PL	\$750,000
7 CR 525 Extension - Wade Industrial Park	The Nelson right-of-way closing was delayed due to the billboard easement conflict; however, the billboard release execution is anticipated by the end of March so closing can occur in April. DEP approval is in hand and the SWFWMD permit is in process. The design includes the water line, gas line and limited improvements on CR 514. Construction bidding is delayed until the Nelson right-of-way is in hand and the SWFWMD permit is in hand.	D	\$2,565,800
8 ITS Study	A Joint Participation Agreement (JPA) with FDOT was approved by the Board of County Commissioners on 1/12/16. A task order with Volkert & Associates for the performance of the study will be executed in February 2016. The study is completed. Presentation was received by the FDOT TSMO Group in March 2017. Sumter/Lake FDOT Meeting scheduled for 4/17/17.	PL	\$200,000
9 C-462 Safety Improvements NE 15th Drive to CR 228	This roadway safety improvement LAP project is 1,200 ft. east of NE 15th Drive to 500 ft. north of CR 228, approximately 0.35 miles. This project will improve the safety of the curve near Camp Wildwood and the intersection of CR 223 & C-462E. BOCC approved negotiations with Kimley-Horn on 3/14/17. The County expects to receive the FDOT NTP for design April 2017.	D	\$169,198
10 C-48W Safety Improvements	C-48W from the Citrus County Line to CR 616 is a roadway safety upgrade project (adding 5' paved shoulders, audible edge line, and guardrail at the curves) approximately 7.5 miles in length. 100% design plans will be submitted to FDOT on 2/15/17. Construction is expected to begin in 2017, after the FDOT LAP agreement goes to the BOCC for approval in March 2017.	C	\$450,000
11 Regional Development Traffic Analysis	Traffic Operational Feasibility Analysis for a Buena Vista Blvd. 4 lane roadway from SR 44 to C-468. TAC unanimously approved LRTP/LOPP to include Buena Vista Blvd. and MPO to consider matter 4/26/17.	PL	\$49,500
12 SR 471 & CR 478A Sidewalk Construction (Webster)	This project consists of 5 foot concrete sidewalks on SR 471 from C-478A to Central Avenue and CR 478A from the west side of the Sumter County E.C. Rowell Library to SR 471 in Webster. The FDOT Notice to Proceed was issued 4/7/17 and is scheduled to be completed by 10/3/17.	C	\$503,323
13 CR 673 from CR 674 west to I-75	This 3.5 miles of roadway will be reconstructed, and paved shoulders will be added to the roadway. The RFQ was advertised for Design Consultant Selection 12/15/16. FDOT has authorized design funds for 2017 and construction is anticipated for FY 2018. BOCC awarded project to DRMP. Project under design. 100% plans received.	D	\$299,958
<b>FUTURE PROJECTS</b>			
A C-472 @ US 301 Intersection	A final FDOT signalization study and roundabout alternatives analysis was submitted to the County from FDOT on 10/2/15. A roundabout is the preferred alternative, and is tentatively scheduled for construction in FY 2020-2021. As an interim safety measure, modified the median to a directional type.	FY 2020	TBD
Saved as: S:\Public Works\Division-Admin\Project Update Reports Projects A and B are future projects and not shown on the map.		B/P - Bid or Design Procurement C - Construction CD - Conceptual Design D - Design	PC - Post Construction PL - Planning TBD - To Be Determined WC - Waiting Construction

## MINUTES

### Lake~Sumter Metropolitan Planning Organization Citizens' Advisory Committee (CAC) Meeting

**Wednesday, April 12, 2017  
Regular Meeting, 4 p.m.**

**1616 South 14<sup>th</sup> Street  
Leesburg, Florida 34748  
Phone (352) 315-0170 – Fax (352) 315-0993**

#### OPENING

Susy Gibson called the meeting to order at 4:10 p.m.; and confirmed the meeting was properly noticed and a quorum was not present (4 voting members). Susy Gibson asked that everyone introduce themselves and noted no action would occur due to not having a quorum.

Ray San Fratello and Timothy J. Bailey arrived at this time (6 voting members). Susy Gibson noted a quorum was present.

#### **Members Present**

Christina Kurtz-Clark	Lake County, D1
Ray San Fratello	Lake County, D2
Timothy J. Bailey	Lake County, D4
Jerry Prince	Sumter County, 1
Susy Gibson	City of Clermont
Regis LeClerc	Town of Lady Lake

#### **Members Absent**

Bradley W. Campbell	Lake County, D3
Gregory Jones	Lake County, D5
Doug Tharp	Sumter County
Hal Lyons	City of Bushnell
Gerald Cobb	City of Eustis
Victoria Diaz	City of Leesburg
Matt Earnest	City of Minneola
Susan Nemec	City of Mount Dora
David Clutts	City of Tavares
Stephen Stone	City of Wildwood

#### **Staff Present**

Mike Woods	Transportation Planner
Doris LeMay	Executive Assistant
Francis Franco	GIS Manager
Brian Hutt	TMS Project Manager

**Others Present**

Vickie Wyche  
Carol Scott

FDOT  
FDOT/Florida's Turnpike Enterprise

**I. REPORTS**

**A. Florida Department of Transportation**  
Vickie Wyche provided updates

**B. Florida's Turnpike Enterprise**  
Carol Scott provided updates

**C. Sumter County**  
Report provided in Agenda Package

**D. Lake County**  
None

**E. Municipalities**  
None

**F. School Districts**  
None

**G. MPO Staff Reports**  
Mike Woods provided various updates.

**II. AGENDA UPDATE**  
None

**III. COMMENTS FROM THE GENERAL PUBLIC ON ANY AGENDA ITEMS**  
None

**IV. PRESENTATIONS**

**A.** FDOT –US 301 Project Development and Environment Study (PD&E) – Jeff Arms, HDR Consultant Project Manager, provided an overview of the US 301 Project Development and Environment Study PD&E.

**B.** FDOT / Central Florida Expressway Authority – Wekiva Parkway – Mary Brooks, Public Information Officer Wekiva Parkway, presented an overview of the Wekiva Parkway project.

Regis LeClerc requested to be put on record. The sound system does not work properly and is not made for the room.

## V. CONSENT AGENDA

### A. Approval of January 11, 2017 Meeting Minutes

**Motion** was made by Ray San Fratello to approve the January 11, 2017 Meeting Minutes, seconded by Jerry Prince – **motion passed 6-0.**

### B. Approval of February 8, 2017 Meeting Minutes

**Motion** was made by Jerry Prince to approve the February 8, 2017 Meeting Minutes, seconded by Ray San Fratello – **motion passed 6-0.**

## VI. ACTION ITEMS

### A. Election of a Chair and Vice Chair

**Motion** was made by Regis LeClerc to nominate Susy Gibson as Chair of the Citizens' Advisory Committee, Susy Gibson accepted the nomination, seconded by Ray San Fratello. Christina Kurtz-Clark nominated Ray San Fratello as Vice Chair of the Citizens' Advisory Committee, seconded by Regis LeClerc – **motion passed 6-0.**

### B. Recommendation on Resolution 2017-7 Amending the 2040 Long Range Transportation Plan and Acknowledgement of Opening of Public Review Period

Mike Woods provided a brief update of Resolution 2017-7. Discussion continued. **Motion** was made by Christina Kurtz-Clark to approve Resolution 2017-7 Amending the 2040 Long Range Transportation Plan and Acknowledgement of Opening of Public Review Period, seconded by Jerry Prince – **motion passed 6-0.**

### C. Recommendation on Resolution 2017-8 Adopting the 2017 List of Priority Projects and Acknowledgement of Opening of Public Review Period

Mike Woods provided a brief update of Resolution 2017-8. Discussion continued. **Motion** was made by Jerry Prince to approve Resolution 2017-8 Adopting the 2017 List of Priority Projects and Acknowledgement of Opening of Public Review Period, seconded by Regis LeClerc – **motion passed 6-0.**

### D. Recommendation on Draft FY 2017/18 – 2021/22 Transportation Improvement Program and Acknowledgement of Opening of Public Review Period

Mike Woods provided a brief update of Draft FY 2017/18 – 2021/22 Transportation Improvement Program and Acknowledgement of Opening of Public Review Period. Discussion continued. **Motion** was made by Regis LeClerc to approve Draft FY 2017/18 – 2021/22 Transportation Improvement Program and Acknowledgement of Opening of Public Review Period, seconded by Jerry Prince – **motion passed 6-0.**

### E. Recommendation on Resolution 2017-9 to Amend the Current Transportation Improvement Program for FY 2016/17 – 2020/21

Mike Woods provided a brief update of Resolution 2017-9. **Motion** was made by Jerry Prince to approve Resolution 2017-9 to Amend the Current Transportation Improvement Program for FY 2016/17 – 2020/21, seconded by Regis LeClerc – **motion passed 6-0.**

### F. Recommendation to Support Safety Initiative / Regional Analysis of Major Intersections

Mike Woods provided a brief overview of the proposed safety initiative. Susy Gibson requested the font be enlarged and the color coding be enhanced. Discussion continued. **Motion** was made by Jerry Prince to approve the Safety Initiative / Regional Analysis of Major Intersections using crash rate, current project status, and severity of injury as some of the filters staff can use to reduce the list to 25, seconded by Regis LeClerc – **motion passed 6-0.**



**VII. DISCUSSION ITEMS**

**A. Modification UPWP – PIP Update**

Mike Woods provided a brief update of recent modifications to the MPO's scope of work for grant funding, the Unified Planning Work Program.

**B. Update on MPO Transitions**

Mike Woods provided a brief update on MPO Transitions. Discussion Continued.

**VIII. PROJECT UPDATES**

Mike Woods noted the project updates are included in the Agenda Package.

**IX. CONFIRMATION OF REPRESENTATIVE ATTENDING GOVERNING BOARD MEETING**

Jerry Prince confirmed that he will be attending the April 26, 2017 Governing Board Meeting.

**X. ADJOURNMENT** Motion was made by Jerry Prince to adjourn meeting, seconded by Timothy J. Bailey to adjourn the meeting. Meeting adjourned at 5:52 p.m.

---

Susy Gibson, Chairman





LAKE-SUMTER METROPOLITAN PLANNING ORGANIZATION  
2017/18 - 2021/22  
TRANSPORTATION IMPROVEMENT PROGRAM  
TABLE 5A  
Maintenance Bridges

COUNTY	NAME OR DESIGNATION	FM NUMBER **DOT	PROJECT SEGMENT	PROJECT LENGTH	LRTP NUMBER	WORK DESCRIPTION	PROJECT PHASE	FUNDING SOURCES BY YEAR (\$000's)																			
								2017/18				2018/19				2019/20				2020/21				2021/22			
								State	Federal	Local	Private	State	Federal	Local	Private	State	Federal	Local	Private	State	Federal	Local	Private	State	Federal	Local	Private
Lake	SR 19	2383192	OVER LITTLE LAKE HARRIS BRIDGE # 110026	0.592 mi	pg.10,11	BRIDGE REPLACEMENT	DSB	0	0	0	0	0	43	0	0	0	0	0	0	0	0	0	0	0	0	0	0
Lake	SR 44 BRIDGE# 110063	4295561	BRIDGE# 110063		pg.10,11	BRIDGE REPLACEMENT	CST	0	0	0	0	0	0	0	0	0	26,715	0	0	0	0	0	0	0	0	0	0
							PE	0	500	0	0	0	0	0	0	0	0	0	0	0	0	0	0	0	0	0	0
							ROW	55	1,867	0	0	0	536	0	0	0	0	0	0	0	0	0	0	0	0	0	0
Lake	SR 33 BRIDGE# 110002	4338601	OVER GREEN SWAMP	0.027 mi	pg.10,11	BRIDGE REPLACEMENT	CST	0	0	0	0	0	4,652	0	0	0	0	0	0	0	0	0	0	0	0	0	0
							ROW	0	236	0	0	0	81	0	0	0	35	0	0	0	0	0	0	0	0	0	0
Sumter	SR 471	4392711	OVER WITHLACOOCHEE RIVER - BRIDGE # 180023	0.061		BRIDGE-REPAIR/REHABILITATION	CST	252	0	0	0	0	0	0	0	0	0	0	0	0	0	0	0	0	0	0	0

LAKE-SUMTER METROPOLITAN PLANNING ORGANIZATION  
2017/18 - 2021/22  
TRANSPORTATION IMPROVEMENT PROGRAM  
TABLE 5C  
Maintenance Landscaping

COUNTY	NAME OR DESIGNATION	FM NUMBER **DOT	PROJECT SEGMENT	PROJECT LENGTH	LRTP NUMBER	WORK DESCRIPTION	PROJECT PHASE	FUNDING SOURCES BY YEAR (\$000's)																			
								2017/18				2018/19				2019/20				2020/21				2021/22			
								State	Federal	Local	Private	State	Federal	Local	Private	State	Federal	Local	Private	State	Federal	Local	Private	State	Federal	Local	Private
Lake	SR 46	4371141	FROM EAST OF VISTA VIEW LANE TO EAST OF ROUND LAKE ROAD	1.094	pg.10,11	LANDSCAPING	CST	0	0	0	0	0	0	0	0	268	0	0	0	0	0	0	0	0	0	0	0
Lake	SR 46	4371142	FROM WEST OF US 441 TO EAST OF VISTA VIEW LANE	0.863 mi	pg.10,11	LANDSCAPING	CST	0	0	0	0	0	0	0	0	909	0	0	0	0	0	0	0	0	0	0	0
Lake	CR 46A	4371145	FROM SR 46 TO N OF ARUNDEL WAY	4.705	pg.10,11	LANDSCAPING	CST	0	0	0	0	0	0	0	0	0	574	0	0	0	0	0	0	0	0	0	0
Lake	SR 46/SR 429	4371146	FROM SR 46 TO WEKIVA RIVER RD	4.924	pg.10,11	LANDSCAPING	CST	0	0	0	0	0	0	0	0	0	0	0	0	0	0	0	0	2,863	0	0	0
Sumter	I-75	4378591	AT CR 470 INTERCHANGE	0.454	pg.10,11	LANDSCAPING	CST	581	0	0	0	0	0	0	0	0	0	0	0	0	0	0	0	0	0	0	0

LAKE-SUMTER METROPOLITAN PLANNING ORGANIZATION  
2017/18 - 2021/22  
TRANSPORTATION IMPROVEMENT PROGRAM  
TABLE 5D  
Maintenance - Routine Maintenance

COUNTY	NAME OR DESIGNATION	FM NUMBER **DOT	PROJECT SEGMENT	PROJECT LENGTH	LRTP NUMBER	WORK DESCRIPTION	PROJECT PHASE	FUNDING SOURCES BY YEAR (\$000's)																			
								2017/18				2018/19				2019/20				2020/21				2021/22			
								State	Federal	Local	Private	State	Federal	Local	Private	State	Federal	Local	Private	State	Federal	Local	Private	State	Federal	Local	Private
Lake	VEGETATION AND	2447543	AESTHETICS AREA WIDE		pg.10,11	ROUTINE MAINTENANCE	MNT	1,248	0	0	0	1,300	0	0	0	1,300	0	0	0	1,300	0	0	0	1,300	0	0	0
Lake	LADY LAKE	4171991	MEMORANDUM OF AGREEMENT		pg.10,11	ROUTINE MAINTENANCE	MNT	22	0	0	0	22	0	0	0	22	0	0	0	22	0	0	0	22	0	0	0
Lake	LAKE PRIMARY	4181061	IN-HOUSE		pg.10,11	ROUTINE MAINTENANCE	MNT	1,680	0	0	0	1,675	0	0	0	1,675	0	0	0	1,734	0	0	0	1,734	0	0	0
Sumter	SUMTER PRIMARY	4181111	IN-HOUSE		pg.10,11	ROUTINE MAINTENANCE	MNT	354	0	0	0	355	0	0	0	355	0	0	0	362	0	0	0	362	0	0	0
Lake	CITY OF LEESBURG MOA	4231131			pg.10,11	ROUTINE MAINTENANCE	MNT	12	0	0	0	12	0	0	0	12	0	0	0	12	0	0	0	12	0	0	0
Lake	MOA W/ MASCOTTE	4237901			pg.10,11	ROUTINE MAINTENANCE	MNT	8	0	0	0	8	0	0	0	8	0	0	0	8	0	0	0	8	0	0	0
Lake	PAVEMENT MARKINGS	4238341	RPM'S - PERFORMANCE BASED		pg.10,11	ROUTINE MAINTENANCE	MNT	500	0	0	0	500	0	0	0	500	0	0	0	500	0	0	0	500	0	0	0
Lake	MOA W/ TAVARES	4254581			pg.10,11	ROUTINE MAINTENANCE	MNT	15	0	0	0	15	0	0	0	15	0	0	0	15	0	0	0	15	0	0	0
Lake	MOA W/WILDWOOD	4271941			pg.10,11	ROUTINE MAINTENANCE	MNT	9	0	0	0	14	0	0	0	14	0	0	0	14	0	0	0	14	0	0	0
Lake	DRAINAGE REPAIR	4291762			pg.10,11	ROUTINE MAINTENANCE	MNT	310	0	0	0	0	0	0	0	0	0	0	0	0	0	0	0	0	0	0	0
Lake	UNPAVED SHOULDER	4291801	REPAIR		pg.10,11	ROUTINE MAINTENANCE	MNT	1,225	0	0	0	0	0	0	0	0	0	0	0	0	0	0	0	0	0	0	0

LAKE-SUMTER METROPOLITAN PLANNING ORGANIZATION  
2017/18 - 2021/22  
TRANSPORTATION IMPROVEMENT PROGRAM  
TABLE 5E  
Maintenance - Miscellaneous

COUNTY	NAME OR DESIGNATION	FM NUMBER **DOT	PROJECT SEGMENT	PROJECT LENGTH	LRTP NUMBER	WORK DESCRIPTION	PROJECT PHASE	FUNDING SOURCES BY YEAR (\$000's)																			
								2017/18				2018/19				2019/20				2020/21				2021/22			
								State	Federal	Local	Private	State	Federal	Local	Private	State	Federal	Local	Private	State	Federal	Local	Private	State	Federal	Local	Private
Sumter	I-75 (SR 93) SUMTER CO REST AREA	4385622	FROM N OF SR 50 TO S OF CR 476B	0.439	N/A	REST AREA	PE	930	0	0	0	0	0	0	0	0	0	0	0	0	0	0	0	0	0	0	0





# TRANSPORTATION IMPROVEMENT PROGRAM (TIP)

VARIANCE REPORT 2017/18 - 2021/22

ADD/ DROP	FM NUMBER	ROADWAY	FROM	TO	IMPROVEMENT
Add	4358593	SR 50	FROM HERNDO/SUMTER COUNTY LINE	TO WEST OF CR 757	PRELIMINARY ENGINEERING
Add	4358594	SR 50	FROM WEST OF CR 757	TO THE SUMTER/LAKE COUNTY LINE	PRELIMINARY ENGINEERING
Add	4358595	SR 50	FROM SUMTER/LAKE COUNTY LINE	TO CR 33	PRELIMINARY ENGINEERING
Add	4393292	LAKE SUMTER URBAN AREA FY 2018/2019-2019/2020 UPWP			TRANSPORTATION PLANNING
Add	4393293	LAKE SUMTER URBAN AREA FY 2020/2021-2021/2022 UPWP			TRANSPORTATION PLANNING
Add	4408011	LAKE-LAKE-SUMTER MPO PLANNING STUDIES			PTO STUDIES
Add	4357861	MINNEOLA INTCHG	WIDEN TPK- MINNEOLA INTCHG TO LEESBURG NORTH INTCHG (MP 279 - 289.3)		ADD LANES & RECONSTRUCT
Add	4357891	SR 91 (FLORIDA TURNPIKE)	FROM CR468 INTCHG	TO I-75 INTCHG (MP 301.4 - 308.9)	ADD LANES & RECONSTRUCT
Add	4361271	SR-33	AT CR 561		ADD LEFT TURN LANE(S)
Add	4371672	ROADWAY SETTLEMENT IMPROVEMENTS TURNPIKE MAINLINE MP 284.4 TO 285.5	TURNPIKE MAINLINE FROM MP 284.4 TO 285.5		NEW ROAD CONSTRUCTION
Add	4373291	SR 44	WEST OF US 301		TRAFFIC OPS IMPROVEMENT
Add	4385623	I-75 (SR 93)	AT SUMTER COUNTY SOUTHBOUND REST AREA		REST AREA
Add	4394151	CITRUS TOWER BOULEVARD	AT MOHAWK ROAD		TRAFFIC SIGNALS
Add	4404591	LEESBURG OPERATIONS COMPLEX			FIXED CAPITAL OUTLAY
Add	4404611	LEESBURG OPERATIONS COMPLEX			FIXED CAPITAL OUTLAY
Add	4379381	SR 19/S CENTRAL AVE	FROM N OF CR 450A	TO S OF CR 450/W OCALA STREET	RESURFACING
Add	4391381	SR 19 (BAY STREET)	FROM W NORTON AVE	TO LAKE SAUNDERS DR	RESURFACING
Add	4391391	SR 25	FROM ARLINGTON RIDGE BLVD	TO CR 33	RESURFACING
Add	4392231	C-478	FROM SR 471	TO CENTER HILL CITY LIMITS	RESURFACING
Add	4402941	RESURFACE TURNPIKE MAINLINE LAKE COUNTY MP 279.0 TO MP 287.7	FROM MP 279.0	TO MP 287.7	RESURFACING
Add	4402951	RESURFACE TURNPIKE MAINLINE LAKE COUNTY MP 288.7-297.9 SOUTHBOUND ONLY			RESURFACING
Add	4397011	LAKESHORE DRIVE	FROM HULL DRIVE	TO HARDER ROAD/LAKE SUSAN COURT	SAFETY PROJECT
Add	4397021	LAKE LOUISA ROAD	FROM HAMMOCK RIDGE ROAD	TO US 27	SAFETY PROJECT
Add	4399121	CR 478	FROM US 301	TO CR 734	SAFETY PROJECT
Add	4402942	SAFETY IMPROVEMENTS TURNPIKE MAINLINE LAKE COUNTY MP 279.0 TO MP 287.7	FROM MP 279.0	TO MP 287.7	GUARDRAIL
Add	4402952	SAFETY IMPROVEMENTS TURNPIKE MAINLINE LAKE CNTY MP288.7-297.7 S/B ONLY			GUARDRAIL
Add	4061103	THERMOPLASTIC FOR I-75/TPK INTCHG MODIF. (NORTHERN TERMINUS) (MP309)			SIGNING/PAVEMENT MARKINGS
Add	4392711	SR 471	OVER WITHLACOOCHEE RIVER - BRIDGE # 180023		BRIDGE-REPAIR/REHABILITATION
Add	4390481	EAST ORANGE AVENUE	FROM FRUITWOOD AVENUE	TO SUNRISE LANE	SIDEWALK
Add	4394931	CR 473	FROM FOUNTAIN LAKE BLVD	TO HAINES CREEK ROAD/TREADWAY ELEM	SIDEWALK
Add	4396631	HANCOCK RD (LOST LAKE ELEM SCHL)	FROM SUNBURST LANE	TO GREATER PINES BLV	SIDEWALK
Add	4396831	LOG HOUSE RD (PINE RIDGE ELEM SCH)	FROM CR 561	TO LAKESHORE DRIVE	SIDEWALK
Add	4396841	RADIO ROAD (TREADWAY ELEM SCH)	FROM SILVER BLUFF DR	TO TREADWAY SCH RD	SIDEWALK
Add	4396851	CR561/MONROE ST (ASTATULA ELEM SCH)	FROM TENNESSEE AVE	TO CR48/FL AVE	SIDEWALK
Add	4396861	CR44 BYPASS-(EUSTIS MIDDLE SCH)	FROM E ORANGE AVE	TO CYPRESS GROVE DR	SIDEWALK
Add	4396871	LAKESHORE DR (PINE EDGE ELEM)	FROM CHERITH LANE	TO OLEANDER DRIVE	SIDEWALK
Add	4406061	GOLDEN ISLE DR. / CROSSING #621818-L			RAIL SAFETY PROJECT
Add	4407751	LAKE-LEESBURG INTL PAVEMENT REHABILITATION			AVIATION PRESERVATION PROJECT
Add	4407761	LAKE-LEESBURG INTL AIRFIELD IMPROVEMENTS			AVIATION PRESERVATION PROJECT
Add	4407761	LAKE-LEESBURG INTL APRON EXPANSION			AVIATION PRESERVATION PROJECT
Drop	4106751	SR 40	FROM MARION CO LINE	TO VOLUSIA CO LINE	PD&E/EMO STUDY
Drop	4270561	SR 50/SR 33	FROM CR 565 (VILLA CITY)	TO CR 565A (MONTEVISTA)	PRELIM ENG FOR FUTURE CAPACITY
Drop	4338302	HANCOCK ROAD EXTENSION AT THE MINNEOLA INTERCHANGE			TRANSPORTATION PLANNING
Drop	4397561	SR 19/N CENTRAL AVE	FROM CR-450A	TO BULLDOG WAY/OLDE MILLSTREM RV PARK	CORRIDOR/SUBAREA PLANNING
Drop	2382751	SR 46	FROM SR 500 (US 441)	TO SEMINOLE CO LINE	PD&E/EMO STUDY
Drop	2382759	SR429 (WEKIVA PKWY)	FROM ORANGE CO LINE	TO W OF OLD MCDONALD RD	TOLL PLAZA
Drop	2383191	SR 19	FROM CR 48	TO CR 561	PD&E/EMO STUDY
Drop	2383943	SR 500 (US 441)	FROM PERKINS ST	TO SR 44	ADD LANES & RECONSTRUCT
Drop	2384298	SR 50	FROM TINY MORSE RD	TO LAKE BLVD	ADD LANES & RECONSTRUCT

# TRANSPORTATION IMPROVEMENT PROGRAM (TIP)

VARIANCE REPORT 2017/18 - 2021/22

ADD/DROP	FM NUMBER	ROADWAY	FROM	TO	IMPROVEMENT
Drop	2426262	SR 93 (I-75)	FROM HERNANDO CO LINE	TO C-470	ADD LANES & REHABILITATE PVMNT
Drop	4061101	I-75/TURNPIKE INTERCHANGE	FROM NORTHERN TERMINUS	TO (MP 309)	INTERCHANGE IMPROVEMENT
Drop	4098701	SR 44 (FORMELY C-44B)	FROM SR 500 US 441	TO CR 44/SR-44	ADD LANES & RECONSTRUCT
Drop	4112573	SR 35 (US 301)	N OF CR 232	TO N OF NE 110 RD	ADD LANES & REHABILITATE PVMNT
Drop	4167242	SR 50	ADVANCE ROW ACQUISITION - LAKE COUNTY		RIGHT OF WAY ACTIVITIES
Drop	4230961	SR 33	AT CR 474		ADD LEFT TURN LANE(S)
Drop	4301871	CR 466	AT US 301		ADD TURN LANE(S)
Drop	4302534	CR 466A (MILLER BLVD) PHASE 3 FROM TIMBERTOP LN TO CENTURY AVE			ADD LANES & RECONSTRUCT
Drop	4338301	MINNEOLA INTERCHANGE	MINNEOLA PARTIAL	INTERCHANGE (TPK MP 279)	INTERCHANGE RAMP (NEW)
Drop	4344561	SR 471	AT CR 528		ADD TURN LANE(S)
Drop	4345181	NEW INTERCHANGE	AT CR 468 (TPK MP 301.4)		INTERCHANGE (NEW)
Drop	4354761	I-75 at CR 514	FROM 0.5 MILES WEST OF I-75	TO US 301	WIDEN ROAD
Drop	4355411	CITRUS GROVE ROAD	FROM US 27	TO N HANCOCK RD/ FL TURNPIKE	ADD LANES & RECONSTRUCT
Drop	4357231	WELLNESS WAY STATE FUNDED SIB			NEW ROAD CONSTRUCTION
Drop	4375011	SR 429 (WEKIVA PKWY) FROM LAKE CO LINE TO SR 46			ITS FREEWAY MANAGEMENT
Drop	4375012	SR 429 (WEKIVA PKWY) FROM LAKE CO LINE TO SR 46			CONSTRUCT SPECIAL STRUCTURE
Drop	4222281	SR 471 AT CR 478			INTERSECTION IMPROVEMENT
Drop	4273051	RESERVE BOX-VILLAGES	(LAKE/SUMTER) OPERATION &	SAFETY IMPROVEMENTS	FUNDING ACTION
Drop	4293562	US 441 UTILITY RELOCATION			UTILITY CONTRACTS
Drop	4383261	NATURAL DISASTER LAKE COUNTYWIDE			EMERGENCY OPERATIONS
Drop	4195931	SR 35 (US 301)	FROM S OF SR 91(TURNPIKE)	TO MARION COUNTY LINE	RESURFACING
Drop	4231981	SR 91 (FLORIDA TURNPIKE)	FROM MP 281.8	TO MP 297.8	RESURFACING
Drop	4248831	SR 35/US 301	FROM SR48/CR475 (MAIN ST)	TO SOUTH OF SE 13TH AVE	RESURFACING
Drop	4271441	SR 91 (FLORIDA TURNPIKE)	MP274 TO MP275 NB & FROM	MP274 TO MP275.7 SB	RESURFACING
Drop	4273751	I-75 (SR93)			RESURFACING
Drop	4306511	SR 44	FROM SR25/US27/14TH ST	TO US 441 (NORTH BLVD)	RESURFACING
Drop	4306521	SR 50	FROM SR 33	TO EAST OF CR565 (MONTE VISTA)	RESURFACING
Drop	4323331	SR 25/500	FROM AVENIDA CENTRAL/GRIFFIN AVE.	TO SUMTER CO LINE	RESURFACING
Drop	4339591	SR 35 (US 301)	FROM S OF W CHEROKEE AVE	TO NOBLE AVENUE	RESURFACING
Drop	4354961	SR 48 (EAST BELT AVE)	FROM MAIN STREET	TO US 301	RESURFACING
Drop	4351261	LIGHTING FOR OKAHUMPKA PLAZA PHASE II			LIGHTING
Drop	4370561	SR25 (US 27)	FROM US 192	TO GREATER GROVES/GOLDEN EAGLE	LIGHTING
Drop	4390161	SR 44 DIXIE AVE FROM US 27 TO SR 441			LIGHTING
Drop	4193251	SR 91 (FLORIDA TURNPIKE)	WITHIN SUMTER COUNTY		GUARDRAIL
Drop	4193301	SR 91 (FLORIDA TURNPIKE)	WITHIN LAKE COUNTY,	MP 274 - 298	GUARDRAIL
Drop	4231983	SR 91 (FLORIDA TURNPIKE)	FROM S IN LAKE COUNTY MP 281	TO 297.8	GUARDRAIL
Drop	4231982	SR 91 (Florida Turnpike)	LAKE COUNTY RESURFACING - THERMOPLASTIC-	SB ONLY, FROM MP 281 TO 297.8	SIGNING/PAVEMENT MARKINGS
Drop	4344221	CR 466A (PICCIOLA RD )FROM DOGWOOD DRIVE TO S OF TWIN PALMS ROAD			PAVE SHOULDERS
Drop	4347001	CR 48	FROM CITRUS CO LINE	TO WEST OF CR 616	PAVE SHOULDERS
Drop	4347011	CR 476	FROM HERNANDO CO LINE	TO SR 35 (US 301)	SIGNING/PAVEMENT MARKINGS
Drop	4190581	CR 48 OVER WITHLACOOCHEE RIVER BR # 184006			BRIDGE-REPAIR/REHABILITATION
Drop	4245241	SR 50 BR# 180021	OVER ABANDONED RAILROAD	BRIDGE REPLACEMENT	BRIDGE REPLACEMENT
Drop	4275621	SR 44	BRIDGE # 110063	PAINT & SEAL DECK	BRIDGE-REPAIR/REHABILITATION
Drop	4345182	CR 468 BRIDGE (TPK MP 301.4)	SAFETY IMPROVEMENTS		BRIDGE REHABILITATION
Drop	4374651	CR-470 LAKE PANASOFFKEE OUTLET BRIDGE #184054 REPAIR			BRIDGE-REPAIR/REHABILITATION
Drop	4374661	CR 48 JUMPER CREEK BRIDGE ID#184008 REPAIR			BRIDGE-REPAIR/REHABILITATION
Drop	4374671	C-476 BRIDGE OVER WITHLACOOCHEE - BRIDGE #184019			BRIDGE-REPAIR/REHABILITATION
Drop	4346581	SR 50	FROM N BAY LAKE AVE	TO FISKE AVE	DRAINAGE IMPROVEMENTS
Drop	4370581	DRAINAGE MAINTENANCE/REPAIR	VARIOUS LOCATIONS		DRAINAGE IMPROVEMENTS
Drop	4351262	LANDSCAPE OKAHUMPKA PLAZA - PHASE II			LANDSCAPING
Drop	4354341	SR 25 (US 27)	AT SR 50 INTERCHANGE		LANDSCAPING

# TRANSPORTATION IMPROVEMENT PROGRAM (TIP)

VARIANCE REPORT 2017/18 - 2021/22

ADD/ DROP	FM NUMBER	ROADWAY	FROM	TO	IMPROVEMENT
Drop	4371144	SR 429	FROM LAKE COUNTY LINE	TO SR 46	LANDSCAPING
Drop	4371491	SR 500 (US 441)	FROM N OF DR MARTIN LUTHER KING BLVD	TO EAGLES NEST DR	LANDSCAPING
Drop	4378611	I-75 @ CR 476B INTERCHANGE			LANDSCAPING
Drop	4378621	I-75 @ SR 48 INTERCHANGE			LANDSCAPING
Drop	4380001	SR 50 (BROAD STREET) FROM BEVERLY DR TO E OF WATERSIDE POINTE DR			LANDSCAPING
Drop	4259971	MOA WITH SUMTER COUNTY	I-75 AT CR 673 INTERCHANGE		ROUTINE MAINTENANCE
Drop	4291571	ASPHALT REPAIR			ROUTINE MAINTENANCE
Drop	2433391	LEESBURG/OCALA	MAINT CONSOLIDATION	PHASE I	FIXED CAPITAL OUTLAY
Drop	4224181	OKAHUMPKA SERVICE	PLAZA MODIFICATION (MP 299)		REST AREA
Drop	4309751	LAKE WEKIVA TRAIL	TREMAIN STREET/MOUNT DORA	WEKIVA RIVER	BIKE PATH/TRAIL
Drop	4309752	LAKE-WEKIVA TRAIL	FROM TREMAIN STREET	TO CR 46	BIKE PATH/TRAIL
Drop	4309753	LAKE-WEKIVA TRAIL	FROM CR 46	TO HOGIN STREET	BIKE PATH/TRAIL
Drop	4332141	VILLAGES ELEMENTARY SCHOOL PED FEATURES	AT US 27 2 LOCATIONS		TRAFFIC SIGNAL UPDATE
Drop	4336731	TAV-LEE TRAIL EXT	FROM WOOTEN PARK	TO NORTH OF SINCLAIR AVE/RUBY ST	BIKE PATH/TRAIL
Drop	4143311	LAKE COUNTY	5307 - CAPITAL FIXED ROUTE GRANT	TO PURCHASE BUSES	CAPITAL FOR FIXED ROUTE
Drop	4241191	SUMTER COUNTY	SUMTER 5311 - TRANSPORTATION	OPERATING ASSISTANCE	OPERATING/ADMIN. ASSISTANCE
Drop	4241201	LAKE COUNTY	LAKE 5311 - TRANSPORTATION	OPERATING ASSISTANCE	OPERATING/ADMIN. ASSISTANCE
Drop	4241251	LAKE COUNTY	BLOCK GRANT-FIXED ROUTE	OPERATING COSTS	OPERATING FOR FIXED ROUTE
Drop	4371871	LAKE CO PUBLIC TRANS			CAPITAL FOR FIXED ROUTE
Drop	4388671	LAKE-SEC 5339	CAPITAL IMPROVEMENTS PROJECT	FOR FIXED ROUTE	CAPITAL FOR FIXED ROUTE
Drop	4398171	5310 OPERATING ASSISTANCE FOR SCARC			OPERATING/ADMIN. ASSISTANCE
Drop	4292141	ALTERNATIVE ANALYSIS	ORANGE BLOSSOM EXPRESS		RAIL CAPACITY PROJECT
Drop	4405831	CR 452	AT CR 452 AND LAKESHORE DR		RAIL CROSSING IMPROVEMENTS
Drop	4405841	CR 4436 (BAY ROAD)	AT CR 4436 (Bay Road) Crossing #621821-U		RAIL CROSSING IMPROVEMENTS
Drop	4405851	LAKESHORE DRIVE	AT Lakeshore Drive/Crossing #622014-B		RAILROAD CROSSING
Drop	4405991	CR 44	AT CR-44/Crossing #622027-C		RAIL CROSSING IMPROVEMENTS
Drop	4315611	LAKE-LEESBURG INTL	DESIGN TERMINAL BUILDING	AND RAMP	AVIATION CAPACITY PROJECT



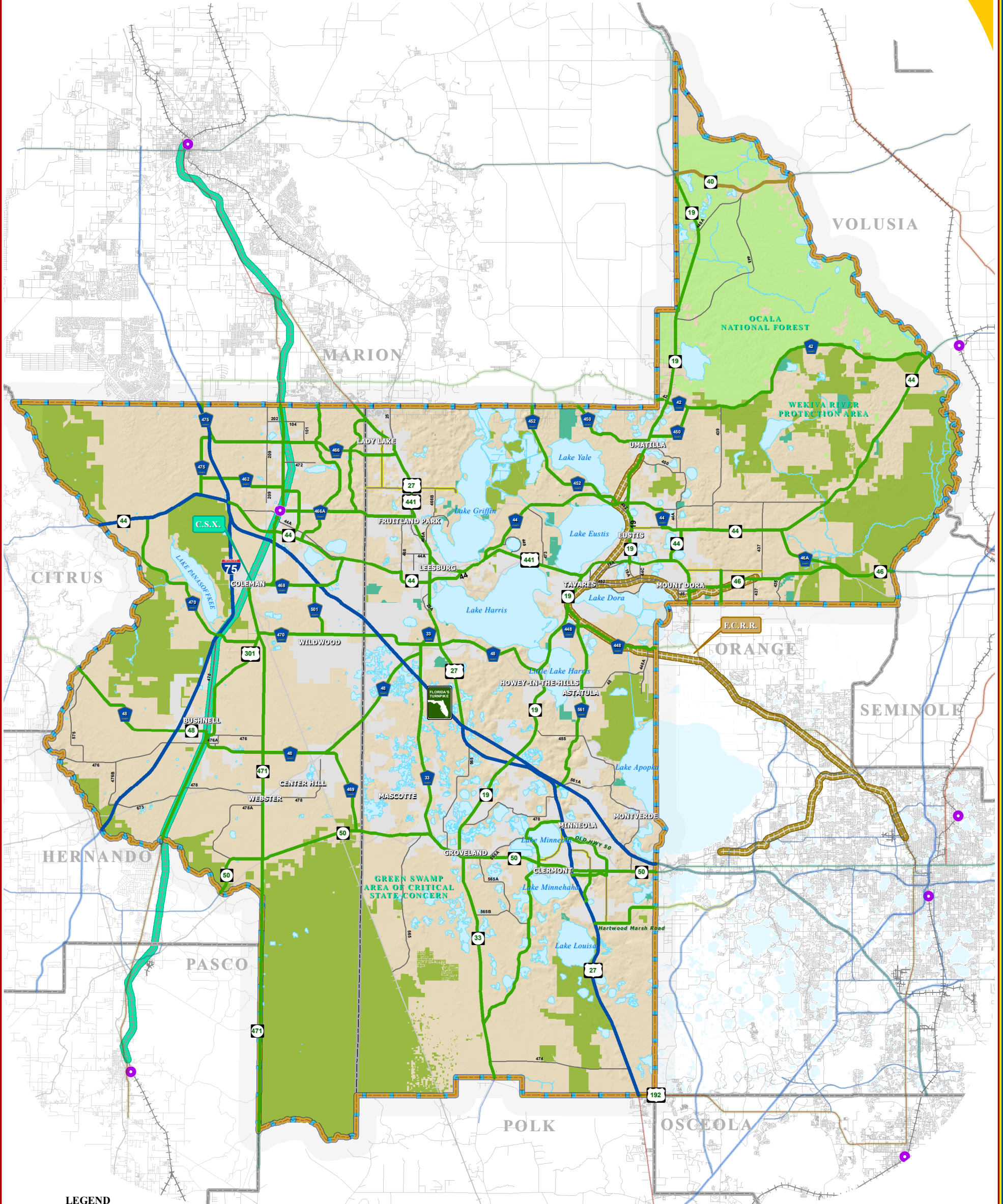
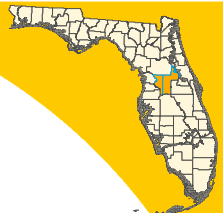
Top 25 Crash Intersections - 2013 - 2015 Revised For Crash Rate and No Project Improvements

No Fatalities-Incapacitating Injury-Bike/Peds involved  
 "Fatalities-Incapacitating Injury-Bike/Peds involved  
 Have projects related to intersection in TIP

Rank	Intersection_Name	Sig./Unsig.	# of Legs	Crash Count	Fatal Crashes	Fatal & Incapacitating Injury_Crashes	Injury Crashes	Bike/Ped Crashes	Vehicles	Damages	City	County	Intersection Location	Total Average ADT*	Approach Average ADT*	Crash Rate**	FM #	TIP PROJECT NAME	PROGRAMED FUNDS	WORK DESC	
1	SR-50 & S GRAND HWY	Y	4	54	0	0	11	1	110	\$214,250	Clermont	Lake	STREET VIEW	5,281	2,641	5.60	11.20				
2	US-441 & BANNING BEACH RD / N ST CLAIR ABRAMS AVE	Y	4	34	0	3	10	2	71	\$82,700	Tavares	Lake	STREET VIEW	3,517	1,759	5.30	10.59				
3	CR-452 & E BURLEIGH BLVD	Y	4	45	0	1	9	1	94	\$103,452	Tavares	Lake	STREET VIEW	5,442	2,721	4.53	9.06				
4	US-27 & DR MARTIN LUTHER KING BLVD	Y	4	48	0	1	7	0	100	\$214,550	Fruitland Park	Lake	STREET VIEW	5,920	2,960	4.44	8.89				
5	SR-50 & CR-455 / HARTLE RD	y	4	50	0	3	16	1	105	\$237,650	Unincorp.	Lake	STREET VIEW	7,006	3,503	3.91	7.82				
6	SR-19 & OLD US-441	y	4	54	0	1	9	0	110	\$128,100	Tavares	Lake	STREET VIEW	10,346	5,173	2.86	5.72				
7	US-441 & EUDORA RD / CR-44C	y	4	64	1	2	15	0	130	\$256,750	Mount Dora	Lake	STREET VIEW	13,507	6,754	2.60	5.19				
8	US-27 & HOOKS ST	y	4	55	0	1	18	0	111	\$207,750	Clermont	Lake	STREET VIEW	11,790	5,895	2.56	5.11				
9	GRIFFIN RD & N 14TH ST	y	4	43	0	1	13	3	85	\$85,450	Leesburg	Lake	STREET VIEW	11,027	5,513	2.14	4.27				
10	US-27 & CR-48	y	4	54	0	3	19	0	110	\$259,250	Unincorp.	Lake	STREET VIEW	14,091	7,045	2.10	4.20				
11	US-441 & DAVID WALKER DR	y	4	38	1	2	12	0	75	\$177,900	Eustis	Lake	STREET VIEW	12,096	6,048	1.72	3.44				
12	SR-50 & HANCOCK RD	y	4	96	0	3	33	3	197	\$380,150	Clermont	Lake	STREET VIEW	31,961	15,981	1.65	3.29				
13	US-441 & CR-473 / BLUEGILL DR	y	4	36	1	1	7	0	75	\$202,955	Unincorp.	Lake	STREET VIEW	12,836	6,418	1.54	3.07				
14	US-27 & E MAIN / W MAIN ST	y	4	45	0	1	12	1	92	\$101,500	Leesburg	Lake	STREET VIEW	19,922	9,961	1.24	2.48				
15	SR-50 & CITRUS TOWER BLVD	y	4	62	1	1	10	1	126	\$228,250	Unincorp.	Lake	STREET VIEW	29,507	14,753	1.15	2.30				
16	US-27 & CAGAN CROSSINGS BLVD	y	4	57	1	2	24	2	120	\$290,950	Unincorp.	Lake	STREET VIEW	41,100	20,550	0.76	1.52				
17	US-441 & SPRING HARBOR BLVD	y	3	45	0	2	12	1	91	\$209,400	Mount Dora	Lake	STREET VIEW	44,000	22,000	0.56	1.12				
18	US-192 & TOWN CENTER BLVD	y	4	50	0	1	20	2	105	\$227,472	Unincorp.	Lake	STREET VIEW	52,000	26,000	0.53	1.05				
19	CR-466 & BUENA VISTA BLVD	y	4	36	0	5	10	0	70	\$166,010	Unincorp.	Sumter	STREET VIEW	39,700	19,850	0.50	0.99				
20	CR-466 & ROLLING ACRES RD	y	4	49	0	1	14	0	107	\$210,800	Lady Lake	Lake	STREET VIEW	56,531	28,265	0.47	0.95				
21	US-192 & SUMMER BAY BLVD	N	4 ^	40	0	1	16	1	89	\$230,405	Unincorp.	Lake	STREET VIEW	52,000	26,000	0.42	0.84				
22	CR-466 & MORSE BLVD	y	4	48	0	5	19	0	99	\$251,751	Unincorp.	Sumter	STREET VIEW	68,900	34,450	0.38	0.76				
23	US-301 & CR-466	y	4	42	0	3	12	0	86	\$224,421	Unincorp.	Sumter	STREET VIEW	61,600	30,800	0.37	0.75				
24	US-441 & CR-44 / SLEEPY HOLLOW RD	y	4	56	0	0	17	0	116	\$149,150	Leesburg	Lake	STREET VIEW	9,909	4,955	3.10	6.19				
25	SR-46 & PLYMOUTH SORRENTO RD	y	4	36	0	0	11	0	72	\$191,357	Unincorp.	Lake	STREET VIEW	7,339	3,670	2.69	5.38	4309752	LAKE-WEKIVA TR	TIP Report	
26	US-27 & VISTA DEL LAGO BLVD / HARTWOOD MARSH RD	y	4	42	0	0	6	0	89	\$75,150	Clermont	Lake	STREET VIEW	12,965	6,482	1.78	3.55				
27	US-27 & E GRAND HWY / CITRUS TOWER BLVD	y	4	36	0	0	12	0	71	\$113,750	Clermont	Lake	STREET VIEW	11,156	5,578	1.77	3.54				
28	US-441 & N 3RD ST	y	4	35	0	0	11	0	75	\$99,600	Leesburg	Lake	STREET VIEW	34,000	17,000	0.56	1.13				
29	US-441 & COLLEGE DR	y	4	34	0	0	9	0	76	\$163,400	Leesburg	Lake	STREET VIEW	35,102	17,551	0.53	1.06				
30	US-27 & ROPER BLVD / JOHN'S LAKE RD	y	4	50	0	0	11	0	102	\$185,352	Clermont	Lake	STREET VIEW	77,300	38,650	0.35	0.71				
31	SR-50 & S BLOXAM AVE	y	4	37	0	0	8	0	77	\$120,050	Clermont	Lake	STREET VIEW	72,500	36,250	0.28	0.56				
32	US-441 & SR-19 / ORANGE AVE	y	4	49	0	0	15	0	108	\$156,000	Tavares	Lake	STREET VIEW	98,400	49,200	0.27	0.55				
33	US-441 & SR-44B	Y	4	115	0	1	26	1	239	\$448,465	Mount Dora	Lake	STREET VIEW	10,116	5,058	6.23	12.46	4293561	SR 500/US 441	TIP Report	
34	US-301 & SR-44 / GULF ATLANTIC HWY	y	4	60	0	0	11	0	118	96337	Wildwood	Sumter	STREET VIEW	62,700	31,350 0	0.52	11.20	4301321 4301881	SR 35 (US 301) SR 35 (US 301)	TIP Report TIP Report	
35	US-441 & WOLF BRANCH RD / LIMIT AVE	y	4	82	0	3	25	0	166	\$370,850	Mount Dora	Lake	STREET VIEW	11,550	5,775	3.89	7.78	4293561	SR 500/US 441	TIP Report	
36	US-441 & KURT ST	y	4	42	0	1	17	0	84	\$247,296	Eustis	Lake	STREET VIEW	8,241	4,120	2.79	5.59				US441 to SR19
37	US-27 & ROLLING ACRES RD	y	4	41	0	1	17	0	84	\$175,950	Lady Lake	Lake	STREET VIEW	17,182	8,591	1.31	2.62	2383955	SR 500 (US 441)	TIP Report	Improvements
38	US-441 & SR-44	y	4	131	1	2	21	2	259	\$346,435	Leesburg	Lake	STREET VIEW	98,300	49,150	0.73	1.46	4306511	SR 44	TIP Report	
39	US-441 & LINCOLN AVE	y	4	45	0	1	21	0	89	\$356,650	Mount Dora	Lake	STREET VIEW	41,000	20,500	0.60	1.20	4293561	SR 500/US 441	TIP Report	
40	US-27 / S. 14TH ST & SR-44 / SOUTH ST	y	4	91	0	0	16	1	188	\$215,851	Leesburg	Lake	STREET VIEW	109,900	54,950	0.45	0.91	4306511	SR 44	TIP Report	

NOTES: ^ - This is a limited access controlled intersection (no N/S through movements allowed).  
 \* - The Average ADT was calculated by adding the traffic counts for each leg of the intersection then dividing by the number of years of data.  
 \*\* - The crash rate was calculated by FHWA Methodology: (number of crashes multiplied by 1,000,000) / (365 days) \* (number of years of data) \* (daily number of vehicles entering the intersection).

# ADOPTED REGIONALLY SIGNIFICANT CORRIDORS



**LEGEND**

- Water Body
- Municipal Area
- County Delineation
- Lake-Sumter MPO Boundary
- Public Lands Managed by Federal Agency
- Public Lands Managed by State Agency
- Public Lands Managed by Local Agency

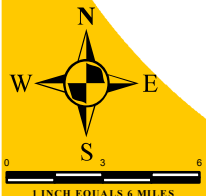
- County Road
- State Road
- US Highway
- Interstate
- Turnpike
- Amtrak Station
- Active Railroad
- Abandoned Railroad

**ADOPTED REGIONAL CORRIDOR CLASSIFICATION**

- Regionally Significant Corridor
- Strategic Intermodal System
- Emerging
- Strategic Intermodal System
- Regionally Significant Rail Corridor - C.S.X
- Emerging Regionally Significant Rail Corridor - F.C.R.R

ADOPTED: SEPTEMBER 28, 2005  
REVISED: JANUARY 25, 2006  
REVISED: APRIL 26, 2006  
REVISED: APRIL 25, 2007  
REVISED: DECEMBER 3, 2008  
REVISED: MAY 26, 2010  
REVISED: DECEMBER 8, 2010  
REVISED: JANUARY 26, 2011

**NOTE:**  
Corridors may be eligible for Transportation Regional Incentive Program (TRIP) funding.



## TRANSPORTATION PLANNING AREA SUMTER AND LAKE COUNTY, FLORIDA



**DATA SOURCES:**  
Lake and Sumter County GIS Department, Planning  
Public Lands Florida Managed Areas (FLMA)  
Florida Natural Areas Inventory (FNAI) Data  
Data Compilation and Map production compliments of the  
Lake-Sumter Metropolitan Planning Organization.  
**MAP COMPOSITION:**  
JANUARY, 2011  
This map product was prepared from a Geographic Information System established by the Lake-Sumter Metropolitan Planning Organization and Lake County Board of County Commissioners. Its employees, agents and professional make no warranty as to its accuracy, and in particular its accuracy as to the following: dimensions, contents, property boundaries, or placement or location of any single feature thereon. The Lake-Sumter Metropolitan Planning Organization and Lake County Board of County Commissioners, its employees, agents and professional MAKE NO WARRANTY OF MERCHANTABILITY OR FITNESS FOR PURPOSES FOR USE FOR A PROJECT OR PURPOSES IN PRESS OR IMPLIED WITH RESPECT TO THIS MAP PRODUCT. Indemnification of all data contained on this map product shall be obtained by the user of this map.



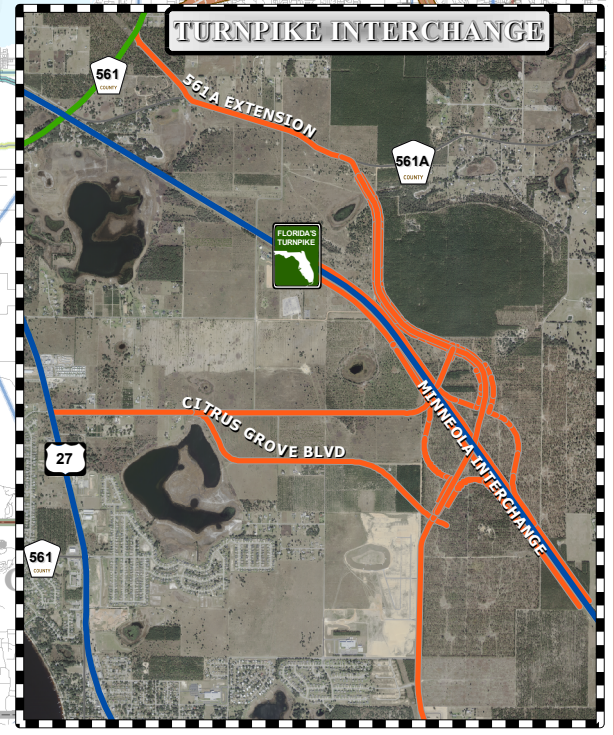
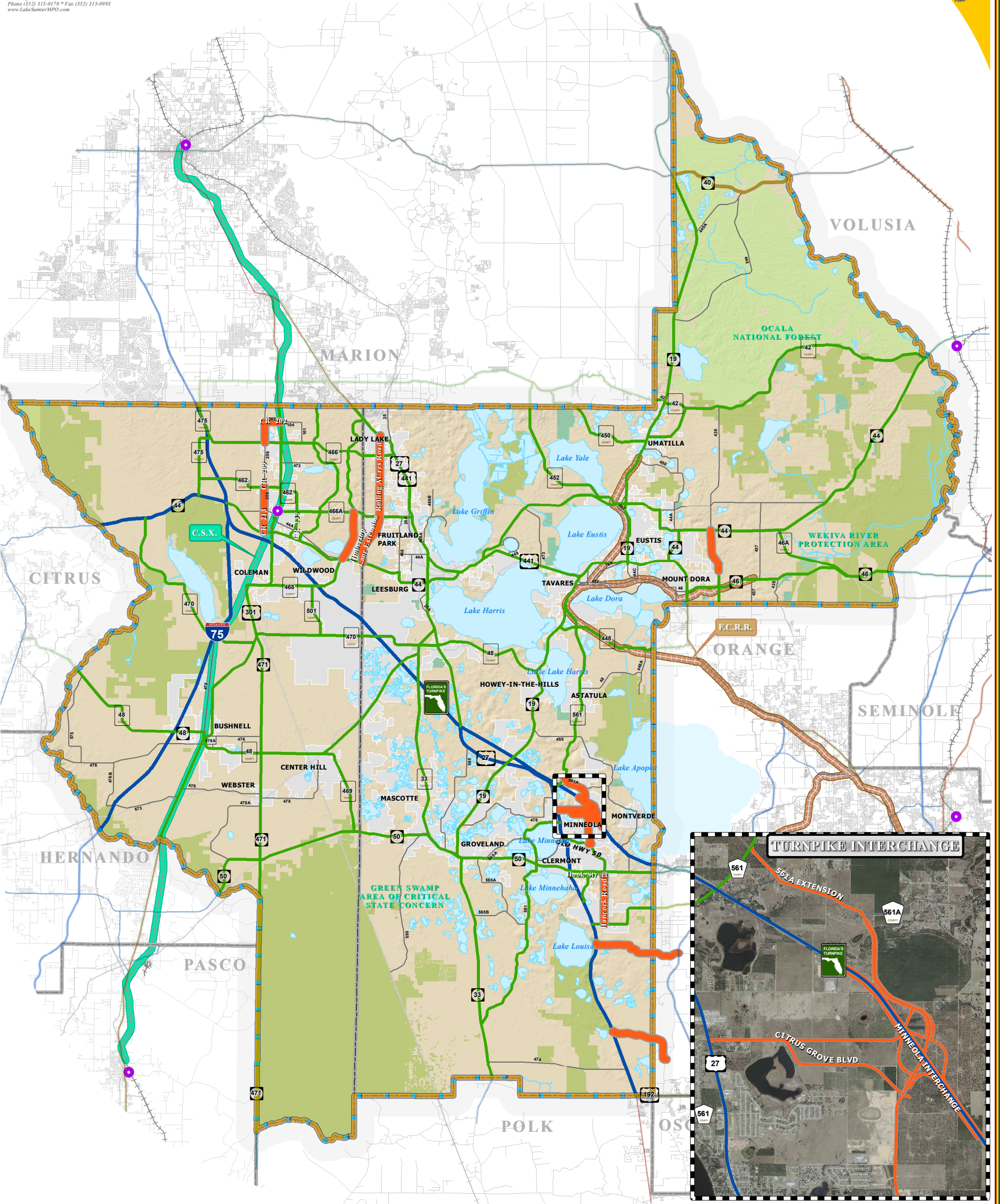
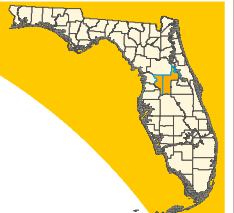
**TABLE 1  
LAKE-SUMTER MPO REGIONALLY SIGNIFICANT CORRIDORS**

CORRIDOR	FROM	TO
C-462	C-475	C-466A
C-466/CR 466	SR 93/I-75	SR 25/US 27 (SR 500/US 441)
C-466A/CR 466A	SR 35/US 301	SR 25/US 27 (SR 500/US 441)
C-468	SR 35/US 301	SR 44
C-469	C-48	SR 50
C-470	SR 44	SR 35/US 301
C-470	SR 35/US 301	SUMTER/LAKE COUNTY LINE
C-475	SR 44	SUMTER/MARION COUNTY LINE
C-48	CITRUS/SUMTER COUNTY LINE	SUMTER/LAKE COUNTY LINE
CR 139/POWELL RD	SR 44	C-466A
CR 33	SR 25/US 27	SR 50
CR 42	MARION/LAKE COUNTY LINE	SR 44
CR 44	SR 500/US 441	ORANGE AVE
CR 448	SR 19	LAKE/ORANGE COUNTY LINE
CR 450	MARION/LAKE COUNTY LINE	CR 42
CR 452	MARION/LAKE COUNTY LINE	SR 19
CR 46A	SR 44	SR 46
CR 470	SUMTER/LAKE COUNTY LINE	CR 33
CR 48	SUMTER/LAKE COUNTY LINE	SR 19
CR 501	C-468	C-470
CR 561	SR 19	SR 25/US 27
CR 561	US 27	SR 33
CR OLD 50	SR 25/US 27	NORTH HANCOCK RD
CITRUS TOWER BLVD	US 27	SR 50
HARTWOOD MARSH ROAD	SR 25/US 27	LAKE/ORANGE COUNTY LINE
HOOKS ST	SR 25/US 27	SOUTH HANCOCK RD
NORTH HANCOCK RD	CR OLD 50	SR 50
SOUTH HANCOCK RD	SR 50	HOOKS ST
BUENA VISTA BLVD	SR 44	SUMTER/MARION COUNTY LINE
MORSE BLVD	C-466A	US 27/441
ROUND LAKE RD	LAKE/ORANGE COUNTY LINE	WOLF BRANCH RD
SR 19	SR 50	LAKE/MARION COUNTY LINE
SR 25/US 27	MARION/SUMTER COUNTY LINE	LAKE/POLK COUNTY LINE
SR 33	POLK/LAKE COUNTY LINE	CR 33
SR 35/US 301	HERNANDO/SUMTER COUNTY LINE	SUMTER/MARION COUNTY LINE
SR 40	MARION/LAKE COUNTY LINE	LAKE/VOLUSIA COUNTY LINE
SR 44	CITRUS/SUMTER COUNTY LINE	LAKE/VOLUSIA COUNTY LINE
SR 46	SR 500/US 441	LAKE/SEMINOLE COUNTY LINE
SR 471	SR 35/US 301	SUMTER/POLK COUNTY LINE
SR 50	HERNANDO/SUMTER COUNTY LINE	LAKE/SUMTER COUNTY LINE
SR 50	LAKE/SUMTER COUNTY LINE	LAKE/ORANGE COUNTY LINE
SR 500/US 441	MARION/SUMTER COUNTY LINE	LAKE/ORANGE COUNTY LINE
SR 530/US 192	SR 25/US 27	LAKE/ORANGE COUNTY LINE
SR 91 /FL TURNPIKE	SR 93 (I-75)/SUMTER COUNTY LINE	LAKE/SUMTER COUNTY LINE
SR 91 /FL TURNPIKE	LAKE/SUMTER COUNTY LINE	LAKE/ORANGE COUNTY LINE
SR 93/I-75	HERNANDO/SUMTER COUNTY LINE	SUMTER/MARION COUNTY LINE

ADOPTED : 09/28/2005  
LAST AMMENDED: 01/26/2011



# EMERGING REGIONALLY SIGNIFICANT CORRIDORS



**LEGEND**

- Water Body
- Municipal Area
- County Delineation
- Lake-Sumter MPO Boundary
- Public Lands Managed by Federal Agency
- Public Lands Managed by State Agency
- Public Lands Managed by Local Agency
- Amtrak Station
- Active Railroad
- Abandoned Railroad
- County Road
- State Road
- US Highway
- Interstate
- Turnpike

**Emerging Regionally Significant Corridors**

- Adopted Regional Corridor Classification**
- Regionally Significant Corridor
  - Strategic Intermodal System
  - Emerging Strategic Intermodal System
  - Regionally Significant Significant Rail Corridor - C.S.X.
  - Emerging Regionally Significant Rail Corridor - F.C.R.R.

ADOPTED: SEPTEMBER 28, 2005  
REVISED: JANUARY 25, 2006  
REVISED: APRIL 26, 2006  
REVISED: APRIL 25, 2007  
REVISED: DECEMBER 3, 2008  
REVISED: MAY 26, 2010  
REVISED: DECEMBER 8, 2010  
REVISED: JANUARY 26, 2011

**NOTE:**  
Corridors may be eligible for Transportation Regional Incentive Program (TRIP) funding.



## TRANSPORTATION PLANNING AREA SUMTER AND LAKE COUNTY, FLORIDA



**DATA SOURCES:**  
Lake and Sumter County GIS Department, Planning  
Public Lands (Florida Managed Areas, (FLMA)  
Florida Natural Areas Inventory (FNAI) Data, 2008  
Data Compilation and Map production compliments of the  
Lake-Sumter Metropolitan Planning Organization.  
This map product was prepared from a Geographic Information System established by the Lake-Sumter Metropolitan Planning Organization and Lake County Board of County Commissioners. Its employees, agents and personnel make no warranty as to its accuracy, and in particular its accuracy in showing, dimensions, contents, property boundaries, or placement or location of any man-made features. The Lake-Sumter Metropolitan Planning Organization and Lake County Board of County Commissioners, its employees, agents and personnel MAKE NO WARRANTY OF MERCHANTABILITY OR FITNESS FOR PURPOSES FOR USE, FOR A PROJECT, OR PURPOSE, EXPRESS OR IMPLIED WITH RESPECT TO THIS MAP PRODUCT. Independent verification of all data contained on this map product should be obtained by the user of this product.

**MAP COMPOSITION:**  
JANUARY, 2011



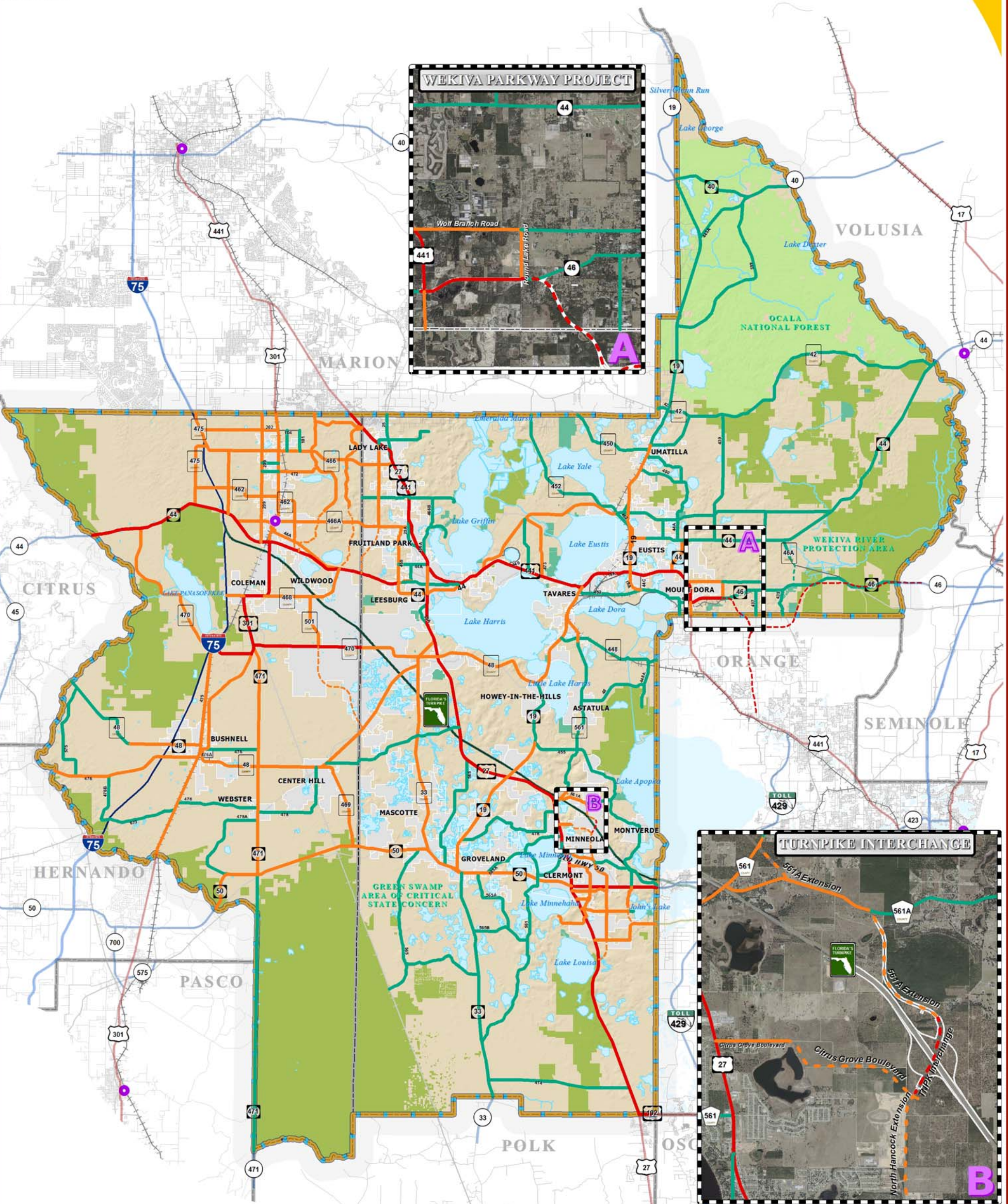
**TABLE 1**  
**LAKE-SUMTER MPO EMERGING REGIONALLY SIGNIFICANT CORRIDORS**

CORRIDOR	FROM	TO
561A EXTENSION	CR 561	MINNEOLA INTERCHANGE (FUTURE INTERCHANGE)
CR 202	US 301	CR 209
CR 209	CR 202	CR 466
CR 209	CR 462	CR 44A
CR 213	CR 44A	SR 44
CITRUS GROVE BLVD	US 27	MINNEOLA INTERCHANGE (FUTURE INTERCHANGE)
HANCOCK ROAD	HOOKS STREET	HARTWOOD MARCH ROAD
MINNEOLA INTERCHANGE	CITY OF MINNEOLA	CITY OF MINNEOLA
NORTH GRASSY LAKE ROAD	CITRUS GROVE ROAD (FUTURE ROAD)	MINNEOLA INTERCHANGE (FUTURE INTERCHANGE)
NORTH HANCOCK EXTENSION	OLD HWY 50	MINNEOLA INTERCHANGE (FUTURE INTERCHANGE)
OLD HWY 50	SOUTH OLD HWY 50	NORTH HANCOCK EXTENSION
ROLLING ACRES ROAD	US 441/27	TIMBERTOP LANE EXTENSION
ROUND LAKE EXTENSION	SR 44	WOLF BRANCH ROAD
SOUTH MORSE BLVD EXTENSION	SR 44	C-466A
SAWGRASS BAY BLVD	US 27	LAKE-ORANGE COUNTY LINE
LAKE ORANGE PARKWAY	US 27	SR 50
TIMBERTOP LANE EXTENSION	ROLLING ACRES ROAD	SR 44

ADOPTED : February/2009  
 LAST AMMENDED: January 26, 2011



# ADOPTED MAXIMUM LANE CONSTRAINED CORRIDORS



**LEGEND**

- Water Body
- Municipal Area
- County Delineation
- Lake-Sumter MPO Boundary
- Public Lands Managed by Federal Agency
- Public Lands Managed by State Agency
- Public Lands Managed by Local Agency
- Amtrak Station
- Active Railroad
- Abandoned Railroad
- County Road
- State Road
- US Highway
- Interstate
- Turnpike

**LakeSumter MPO Adopted Lane Constrained Corridors**

- 6 Lanes
- 4 Lanes
- 2 Lanes
- FUTURE 6 Lanes
- FUTURE 4 Lanes
- FUTURE 2 Lanes

The corridors displayed on this map, as adopted by the Lake Sumter MPO, addresses the lane constraints for state and county roads, designated collector status and above. Corridors that are constrained by this policy are so designated in an effort to accomplish one or more of the following:

- a) To preserve rural character in areas where existing conditions and land use designations do not require the need for additional capacity
- b) To limit the extent to which corridors will be widened in order to prevent roadways from becoming dividing factors within communities or to prevent widening projects causing the erosion of viable neighborhoods or districts
- c) To enhance the regional transportation network, spread demand for transportation capacity and maximize access to communities and centers
- d) To promote the goal of migrating away from capacity improvements through the addition of lanes and to promote the migration toward additional capacity through mass transit improvements along appropriate arterial corridors
- e) To prevent a misallocation of fiscal resources toward lane-addition projects in which cost-benefit ratios are low in terms of cost versus new capacity

**NOTE:**

Please observe that these lane constraints apply only to through lanes and do not apply to turn lanes, auxiliary lanes and exclusive-transit lanes.

**FOR COMPLETE AND DETAILED LIST OF THE CONSTRAINT CORRIDORS, PLEASE REFER TO POLICY #2009-1 LANE CONSTRAINED CORRIDORS.**



## TRANSPORTATION PLANNING AREA SUMTER AND LAKE COUNTY, FLORIDA



**DATA SOURCES:**  
Lake and Sumter County GIS Department, Planning Services  
Public Lands Florida Managed Areas, FWS/2005  
Florida Statewide Areas Inventory (FSAI) Data, 2005  
Data Collection and Map production completed by the Lake-Sumter Metropolitan Planning Organization  
The map product was prepared from a GIS project file named "Transportation Planning Corridors" and was produced by the Lake-Sumter Metropolitan Planning Organization. The map product is not intended to be used for any other purpose. The Lake-Sumter Metropolitan Planning Organization and Lake County, Florida, do not warrant the accuracy, completeness, or reliability of the data or the map product. The Lake-Sumter Metropolitan Planning Organization and Lake County, Florida, do not warrant the accuracy, completeness, or reliability of the data or the map product. The Lake-Sumter Metropolitan Planning Organization and Lake County, Florida, do not warrant the accuracy, completeness, or reliability of the data or the map product.

MAP COMPOSITION:  
SEPTEMBER, 2009



## **Lake~Sumter Metropolitan Planning Organization (MPO) Corridor Constraint Policy February 27, 2008**

### **Policy 2008-1 Corridor Constraints**

With a goal to unite community planning principles with transportation goals and with an objective to provide guidance in prioritizing transportation needs, the following policy is established.

Within the Lake-Sumter MPO Area, various physical, environmental and local policy constraints influence the transportation planning vision for the region. Land use decisions and transportation planning must be coordinated. To assist in this coordination, some corridors should be designated as appropriate for capacity improvements through the expansion of lanes. Some corridors, based on local visions and comprehensive plans, should not be prioritized for capacity improvements.

Right-of-way acquisition and roadway capacity improvements through additional lanes have become too expensive a venture to be considered the only option when planning for future transportation demand. Less expensive alternative (reliever) corridors should be explored in an effort to enhance the regional transportation network. Further, there is an obvious need for a more regional, multimodal approach to addressing the traffic demand and congestion issues within the Lake-Sumter region.

The list of corridors that follows, addresses the lane constraints for state and county roads, designated collector status and above. Corridors that are constrained by this policy are so designated in an effort to accomplish one or more of the following:

- a) To preserve rural character in areas where existing conditions and land use designations do not require the need for additional capacity
- b) To limit the extent to which corridors will be widened in order to prevent roadways from becoming dividing factors within communities or to prevent widening projects causing the erosion of viable neighborhoods or districts
- c) To enhance the regional transportation network, spread demand for transportation capacity and maximize access to communities and centers
- d) To promote the goal of migrating away from capacity improvements through the addition of lanes and to promote the migration toward additional capacity through mass transit improvements along appropriate arterial corridors
- e) To prevent a misallocation of fiscal resources toward lane-addition projects in which cost-benefit ratios are low in terms of cost versus new capacity

*Please note that these lane constraints apply only to through lanes and do not apply to turn lanes, auxiliary lanes and exclusive-transit lanes.*

## Lake~Sumter MPO Corridor Constraint Policy

Through this policy, the following corridors shall be constrained to these maximum laneages:

### Maximum Laneage: Six (6) Lanes

#### *Lake County*

US 27

US 192

US 441

SR 19 **US 441** to CR 561 (Tavares)

SR 44, Sumter County to CR 468 (North/Leesburg)

SR 44 (US 441), Former CR 44B (Mount Dora) to Dixie Avenue (Leesburg)

SR 46, US 441 to Wekiva Parkway

SR 50, US 27 to Orange County

CR 466

CR 470

CR 561, CR 455 to **US 27**

Hancock Road North, SR 50 to New Turnpike Interchange

Hartwood Marsh Road, US 27 to Hartle Road

Shell Pond Road/Schofield Road (SR 429-US 27 Connector)

#### *Sumter County*

US 301, SR 44 to CR 470

US 441, Marion County to Lake County

SR 44, Citrus County to Lake County

CR 466, CR 475 to Lake County

CR 470, I-75 to Lake County



## Lake~Sumter MPO Corridor Constraint Policy

### Maximum Laneage: Four (4) Lanes

#### *Lake County*

SR 19, CR 450 to US 441  
SR 19, CR 455 to SR 50 (Groveland)  
SR 19, CR 561 to CR 48  
SR 33, SR 50 to Lake Erie Road  
SR 40  
SR 44, CR 468/Main Street to US 441  
SR 44, Orange Avenue to CR 46A  
CR 19A, US 441 to CR Old 441/Eudora Road  
CR 33 **SR 50 to US 27**  
CR 44, Orange Ave (Eustis) to US 441 (Leesburg)  
CR 46A  
CR 48 **(US 27 to SR 19)**  
CR 435  
CR 448 (Tavares) **(CR 561 to Orange County)**  
CR 452  
CR 455, SR 19 to CR 561  
CR 455, CR Old 50 to SR 50  
CR 466A, Sumter County to US 27/441(Fruitland Park)  
CR 468) **CR 466A to SR 44**  
CR 473  
CR 478/Apshawa  
CR 561, SR 19 to CR 455  
CR 561A, CR 561 to New Turnpike Interchange  
CR Old 50, US 27 (Minneola) to CR 455  
Citrus Tower Boulevard  
Hancock Road, South of SR 50 to Hartwood Marsh Rd.  
Hartle Road  
Hartwood-Marsh Road, Hartle Road to Orange County  
Hooks Street  
MLK Extension (LSB/FP), CR 468 to Thomas Road  
Johns Lake Road  
Mascotte Collector **(Future Road)**  
Orange Avenue (Eustis) **(US 19 to CR 44)**  
Rolling Acres Road, US 441 to CR 466  
South Clermont Connector  
Steves Road

## Lake~Sumter MPO Corridor Constraint Policy

### Maximum Laneage: Four (4) Lanes

#### *Sumter County*

US 301, Marion County to SR 44  
US 301, CR 470 to Hernando County  
SR 48, I-75 to CR 475  
SR 50, Hernando County to Lake County  
SR 471, SR 50 to US 301  
CR 44A, SR 44 to US 301  
CR 44A, US 301 to SR 44  
CR 48, CR 625 to I-75  
CR 48, SR 48 (Bushnell) to Lake County  
CR 139, CR 44A to CR 466A  
CR 202, CR 475 to US 301  
CR 209/213, SR 44 to Marion County  
CR 229, SR 44 to CR 466  
CR 462, CR 466A to US 301  
CR 462, US 301 to CR 475 N  
CR 466A, US 301 to Lake County  
CR 468, US 301 to SR 44  
CR 469, CR 48 to SR 50  
CR 470, SR 44 to I-75  
CR 472, US 301 to Buena Vista Boulevard  
CR 475, SR 44 to Marion County  
CR 475, SR 48 to CR 470  
CR 476, Hernando County to US 301  
CR 501\*, CR 470 to CR 468  
CR 501 (future), CR 48 to CR 470  
Buena Vista Boulevard, CR 466A to Marion County  
El Camino Real, Buena Vista Boulevard to Morse Boulevard  
Morse Boulevard, CR 466A to US 441  
West Warm Springs Avenue/CR 514, I-75 to US 301

\* CR 501 is constrained at four (4) lanes, contingent upon securing access across the Florida Turnpike for parallel corridor(s), such as Bailey Road. If access cannot be secured for a parallel facility, CR 501 would be constrained at six (6) lanes. Regardless, right-of-way for six (6) lanes (roughly 160 feet) will be required from adjacent development.

## Lake~Sumter MPO Corridor Constraint Policy

### Maximum Laneage: Two (2) Lanes

#### *Lake County*

SR 19, CR 48 to CR 455  
SR 46 (Wekiva Parkway to Seminole County)  
CR 25 (Lady Lake)  
CR 25A (Fruitland Park)  
CR 42  
SR 44, CR 46A to Volusia County  
CR 44A (Eustis) (CR 44. to CR 44A & CR44 to CR 439)  
CR 44A (Leesburg) (US 27 to Thomas Ave.)  
CR 44C (Leesburg) (Thomas Ave. to CR 468)  
CR 439  
CR 445  
CR 445A  
CR 450  
  
CR 455, CR 561 to CR Old 50  
CR 466A, East of US 27/441 (Picciola Rd.)  
CR 474  
  
CR 561, US 27 to SR 33  
CR 565A (Groveland)  
CR 561A, New Turnpike Interchange to CR 455  
CR 565  
CR 565A  
CR Old 50, CR 455 to Orange County  
CR Old 50 (US 27 to CR 455)  
CR Old 441  
Austin Merritt Road/Bridges Road  
Estes Road  
  
Lake Ella Road  
Main Street (Leesburg), SR 44/CR 468 to US 441  
Wolf Branch Road

#### *Sumter County*

SR 471, Polk County to SR 50  
CR 48, Citrus County to CR 625  
CR 101, CR 202 to CR 466  
CR 103, CR 202 to CR 466  
CR 214, CR 209 to US 301  
CR 216, CR 209 to US 301  
CR 476, US 301 to SR 471  
CR 476B, CR 476 to I-75  
CR 478, US 301 to SR 471  
CR 478, SR 471 to CR 48

CR 478A, SR 50 to SR 471  
CR 575, CR 476 to CR 48  
CR 673, I-75 to US 301

## **LAKE~SUMTER MPO PROJECT UPDATES**

### **May 2017**

- **US 301 Project Development and Environment (PD&E) Study (Sumter County) – US 301/SR 44 Intersection Improvements and US 301/Florida’s Turnpike Interchange Improvements**  
US 301 is being studied from SR 44 in Wildwood south to C-470 (west) in Sumterville. The study will lead to specific operational improvements and design improvements to the interchange of US 301 and Florida’s Turnpike and to the intersection of US 301 and SR 44. The study is also examining the concept of a new alignment east and south of Coleman. The planning effort is being coordinated with other Sumter County projects including the I-75/CR 514 proposed interchange and the C-470 study. Public Alternatives Meeting #2 will be held May 2, from 5:30 to 7:30 p.m. at Trinity Baptist Church in Wildwood.
- **I-75/CR 514 PD&E Study (Sumter County near Coleman)**  
Following FDOT and Federal Highway Administration approval of an Interchange Justification Report for the potential new interchange with I-75 west of Coleman at CR 514, the project is now moving into the PD&E Study phase. This effort is being coordinated with the US 301 PD&E study.
- **C-470 PD&E Study**  
FDOT is nearing completion of a Project Development and Environment Study for C-470 in Sumter County east into Lake County across Florida’s Turnpike. The study is examining future needs for the roadway through 2040. The study is also part of an initiative to have 470 in both counties designated as a state road from I-75 in Sumter County east to US 27 in Lake County. Public hearing open house on April 12, at 5:30, at the Lake Panasoffkee Recreation Center.
- **Wekiva Parkway Project**  
The Central Florida Expressway Authority is now constructing all remaining segments in Orange County and new SR 453 from Orange into Lake County from SR 429 to SR 46. The FDOT will move into the construction phase later in 2017 for segments of SR 46, SR 429, and CR 46A in Lake County.
- **Trails: Central Florida C2C Trail and Wekiva Trail**  
Because of the Central Florida MPO Alliance prioritization of Regional Trails, almost all phases of the C2C Trail recently received advancements of funding from FDOT for each needed phase in both counties. The FDOT recently announced forthcoming programming of the subsequent phases of each segment of the C2C. Meanwhile, the Wekiva Trail has two segments out of four segments committed for construction to be complete by 2019/20. The other two segments are now in the design phase.
- **Minneola Interchange: Florida’s Turnpike/North Hancock Road/Citrus Grove Road**  
Florida’s Turnpike Enterprise is to open the new interchange at Milepost 279 in June. North Hancock Road has been opened as a four-lane roadway just south of the forthcoming interchange. North of the interchange, a two-lane North Hancock Road is under construction to CR 561A by the Hills of Minneola landowner. Meanwhile, an east-west connection to US 27 will be accomplished by building Citrus Grove Road as a four-lane roadway, with the eastern segment to be constructed first.
- **Lake-Orange Parkway (US 27 to SR 429)**  
The Orange-Lake Parkway Partners, LLC, is examining options to construct a road between US 27 in Clermont east to SR 429 just south of Winter Garden. Multiple options are being explored to satisfy this regional need that would catalyze the northern corridor of the Wellness Way Area Plan. Once the landowners coordinate the alignment of the future roadway through the Conserve II property, the roadway project will move forward.
- **SR 50 PD&E Study**  
SR 50 is being studied from US 301 in Hernando County east to CR 33 in Mascotte. The Project Development and Environment Study is examining safety and capacity needs and will take into account the environmental issues relative to the Green Swamp and the Withlacoochee State Forest. The study commenced in January and the first public meeting is planned in July.
- **Complete Streets Projects**  
The MPO’s first Complete Streets project, SR 44 (Dixie Avenue) in Leesburg is moving into the construction phase while a study of US 27 in Leesburg is nearing completion and design funds are being requested. The MPO and Umatilla are coordinating with FDOT to add Complete Streets elements to a SR 19 resurfacing project.