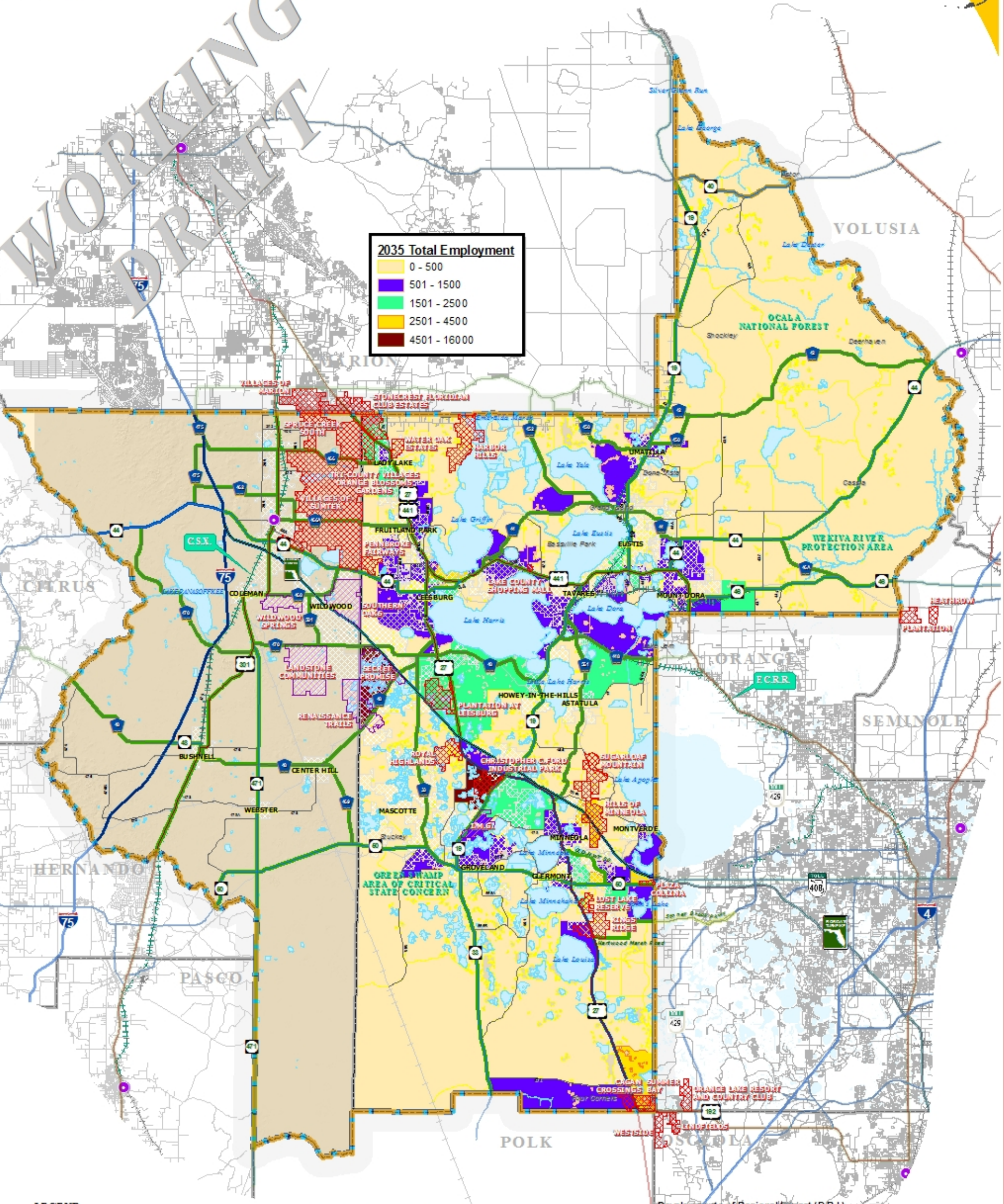


2035 TOTAL EMPLOYMENT PREFERRED LAND USE DATA SET

WORKING
DRAFT



2035 Total Employment

- 0 - 500
- 501 - 1500
- 1501 - 2500
- 2501 - 4500
- 4501 - 16000

LEGEND

- Water Body
- Municipal Area
- County Delineation
- Lake-Sumter MPO Boundary
- County Road
- State Road
- US Highway
- Interstate
- Turnpike
- Antrak Station
- Active Railroad
- Abandoned Railroad

- Adopted Regional Corridor Classification**
- Regionally Significant Corridor
 - Strategic Intermodal System
 - Emerging Strategic Intermodal System
 - Regionally Significant Rail Corridor
 - F.C.R.R. and C.S.X.

ADOPTED: SEPTEMBER 29, 2009
REVISED: JANUARY 24, 2009
REVISED: APRIL 22, 2009
REVISED: DECEMBER 4, 2009

NOTE:
Corridors may be eligible for Transportation Regional Incentive Program (TRIP) funding.

- Developments of Regional Impact (D.R.I.)**
- APPROVED
 - PROPOSED; PENDING

NOTE:
The Status of the Development Order of the D.R.I. The Development Order is the binding order which authorizes and formally approves the D.R.I. It is executed between the applicant and the local government. The DO spells out most, if not all, of the binding conditions that will be imposed upon the D.R.I. and usually includes any separate agreements made to resolve specific regional issues. At a minimum, conditions of approval would include mitigation requirements, monitoring procedures, DO compliance, commencement and termination dates, requirements for the annual report, and a legal description of the property.



TRANSPORTATION PLANNING AREA SUMTER AND LAKE COUNTY, FLORIDA



DATA SOURCE:
Lake-Sumter MPO GIS Department, 31 September 2009
University of Florida GIS Center, 2009
Data provided by the applicant and the local government.
The Lake-Sumter MPO is not responsible for the accuracy of the data provided by the applicant and the local government.
The Lake-Sumter MPO is not responsible for the accuracy of the data provided by the applicant and the local government.
The Lake-Sumter MPO is not responsible for the accuracy of the data provided by the applicant and the local government.

U:\Lake-Sumter-MPO\GIS\Projects\GIS\Map\2035TotalEmployment\Map\2035TotalEmploymentDataSet_11x17.mxd - 5/14/2009 4:31:51 PM