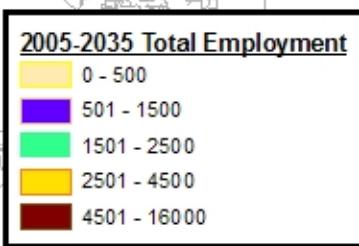
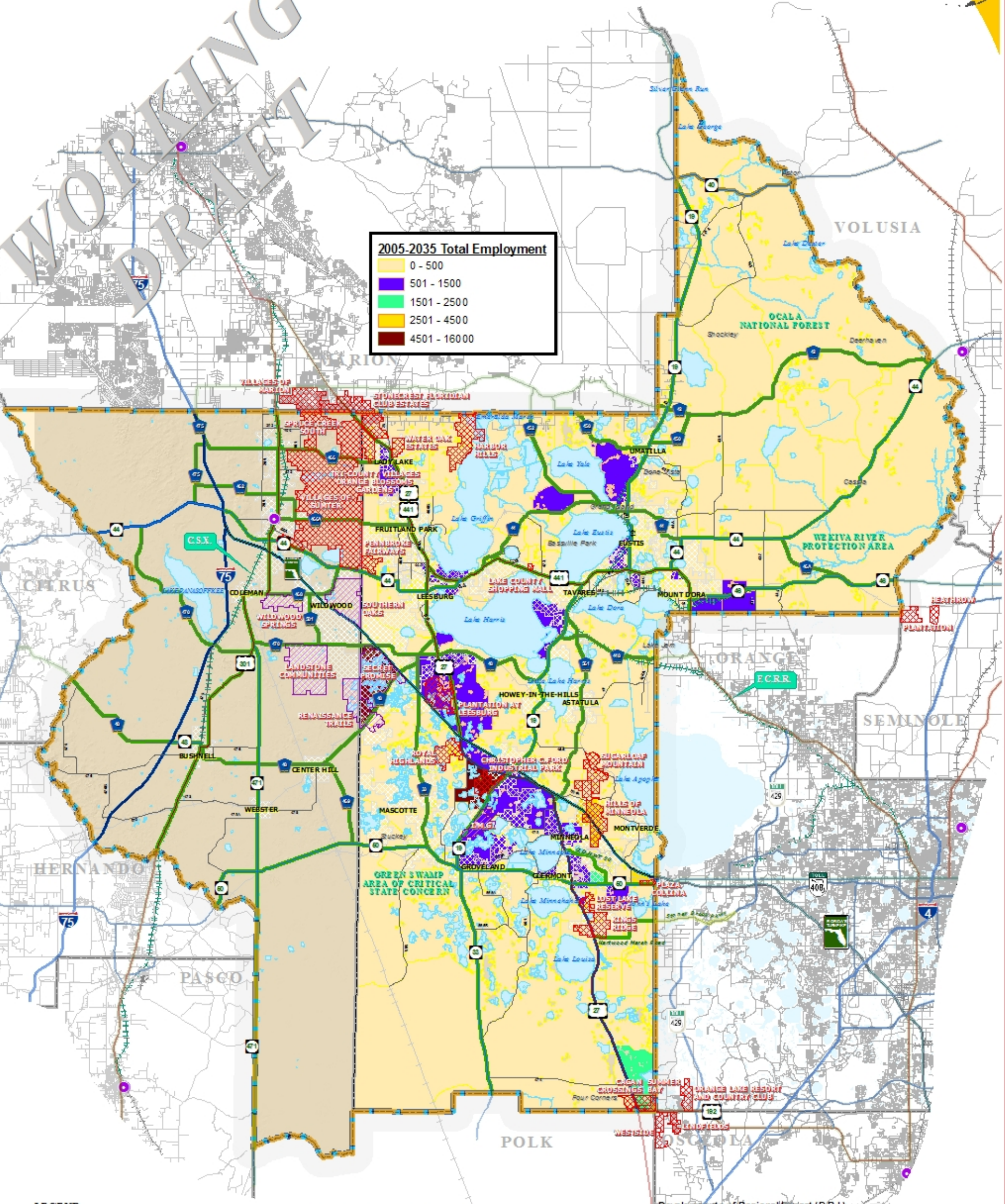


2005-2035 TOTAL EMPLOYMENT PREFERRED LAND USE DATA SET

WORKING DRAFT



LEGEND

- Water Body
- Municipal Area
- County Delineation
- Lake-Sumter MPO Boundary
- County Road
- State Road
- US Highway
- Interstate
- Turnpike
- Antrak Station
- Active Railroad
- Abandoned Railroad

- Adopted Regional Corridor Classification**
- Regionally Significant Corridor
 - Strategic Intermodal System
 - Emerging Strategic Intermodal System
 - Regionally Significant Rail Corridor
 - F.C.R.R. and C.S.X.

ADOPTED: SEPTEMBER 29, 2009
REVISED: JANUARY 24, 2006
REVISED: APRIL 21, 2006
REVISED: DECEMBER 1, 2005

NOTE:
Corridors may be eligible for Transportation Regional Incentive Program (TRIP) funding.

- Developments of Regional Impact (D.R.I.)**
- APPROVED
 - PROPOSED
 - PENDING

NOTE:
The Status of the Development Order of the DRI. The Development Order is the binding order which authorizes and formally approves the DRI. It is executed between the applicant and the local government. The DO spells out most, if not all, of the binding conditions that will be imposed upon the DRI and usually includes any separate agreements made to resolve specific regional issues. At a minimum, conditions of approval would include mitigation requirements, monitoring procedures, DO compliance, commencement and termination dates, requirements for the annual report, and a legal description of the property.



TRANSPORTATION PLANNING AREA SUMTER AND LAKE COUNTY, FLORIDA



DATA SOURCE:
Lake-Sumter MPO, GIS Department, 3510 South 17th Street, Suite 212, Buckley, FL 34722. Data compiled and analyzed by GIS Department, Lake-Sumter MPO, 3510 South 17th Street, Suite 212, Buckley, FL 34722. The map was prepared by GIS Department, Lake-Sumter MPO, 3510 South 17th Street, Suite 212, Buckley, FL 34722. The map was prepared by GIS Department, Lake-Sumter MPO, 3510 South 17th Street, Suite 212, Buckley, FL 34722. The map was prepared by GIS Department, Lake-Sumter MPO, 3510 South 17th Street, Suite 212, Buckley, FL 34722.

U:\Lake-Sumter-MPO\GIS\Projects\GIS\Map\Map2035\Map2035.mxd - 5/14/2009 4:47:39 PM