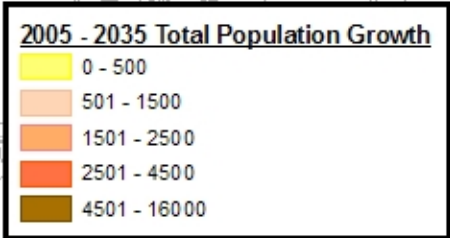
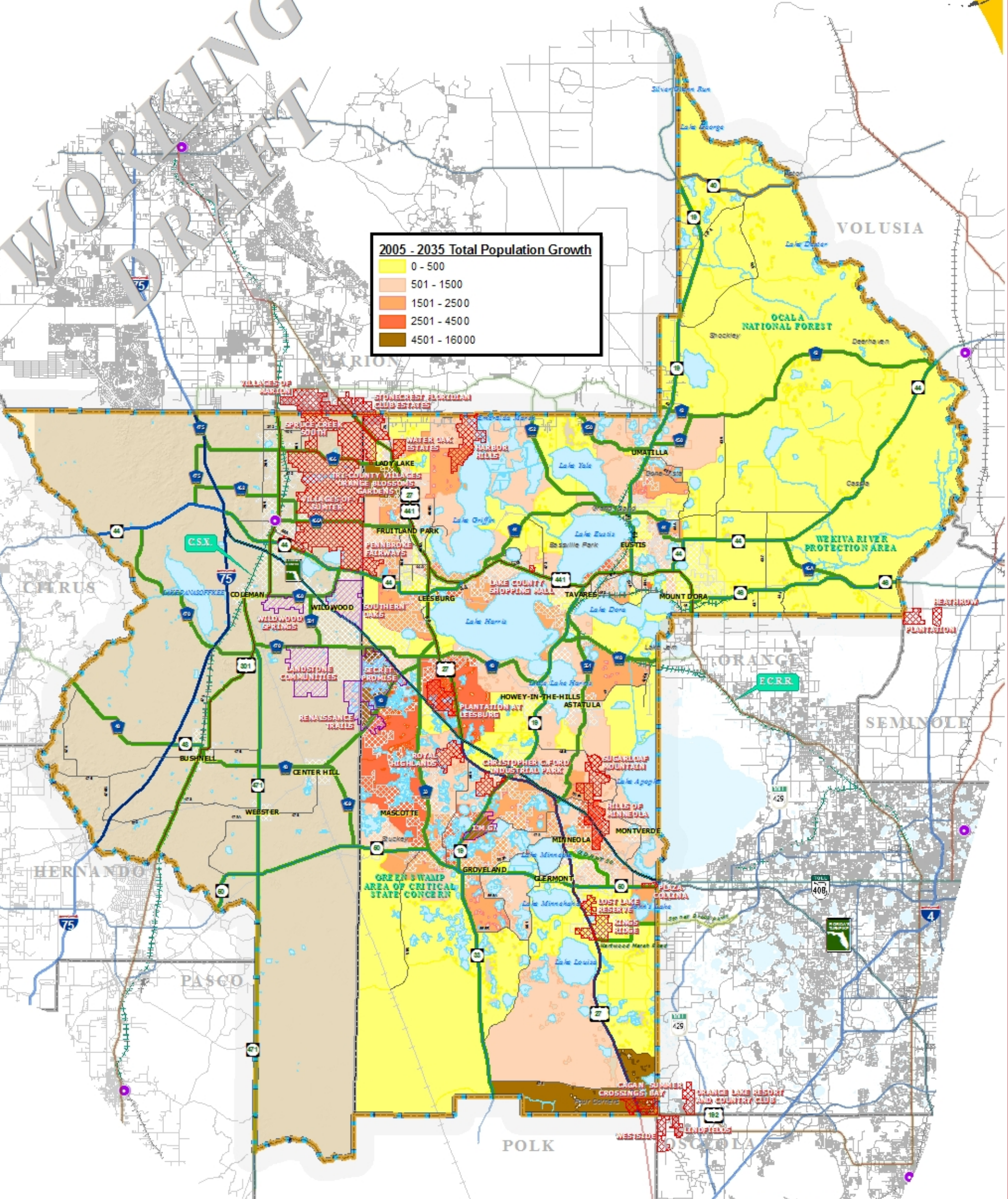


2005 - 2035 TOTAL POPULATION PREFERRED LAND USE DATA SET

WORKING DRAFT



LEGEND

- Water Body
- Municipal Area
- County Delineation
- Lake-Sumter MPO Boundary
- County Road
- State Road
- US Highway
- Interstate
- Turnpike
- Antrak Station
- Active Railroad
- Abandoned Railroad

Adopted Regional Corridor Classification

- Regionally Significant Corridor
- Strategic Intermodal System
- Emerging Strategic Intermodal System
- Regionally Significant Rail Corridor
- F.C.R.R. and C.S.X.

ADOPTED: SEPTEMBER 23, 2009
REVISED: JANUARY 24, 2009
REVISED: APRIL 22, 2009
REVISED: DECEMBER 3, 2008

NOTE:
Corridors may be eligible for Transportation Regional Incentive Program (TRIP) funding.

Developments of Regional Impact (D.R.I.)

- APPROVED
- PROPOSED
- PENDING

NOTE:
The Status of the Development Order of the DRI. The Development Order is the binding order which authorizes and formally approves the DRI. It is executed between the applicant and the local government. The DO spells out most, if not all, of the binding conditions that will be imposed upon the DRI and usually includes any separate agreements made to resolve specific regional issues. At a minimum, conditions of approval would include mitigation requirements, monitoring procedures, DO compliance, commencement and termination dates, requirements for the annual report, and a legal description of the property.



TRANSPORTATION PLANNING AREA SUMTER AND LAKE COUNTY, FLORIDA



DATA SOURCE:
Lake-Sumter MPO, GIS Department, 31 September 2009
University of Florida Center for Urban and Community Development
Data: Center for Urban and Community Development, 31 September 2009
The map was prepared using ArcGIS 9.3.1. The map was prepared using the following data sources:
- Aerial imagery, 2008, provided by the Lake-Sumter MPO.
- Topographic data, 2008, provided by the Lake-Sumter MPO.
- Road data, 2008, provided by the Lake-Sumter MPO.
- Water body data, 2008, provided by the Lake-Sumter MPO.
- Land use data, 2008, provided by the Lake-Sumter MPO.
- Population data, 2008, provided by the Lake-Sumter MPO.
- Rail data, 2008, provided by the Lake-Sumter MPO.
- Other data, 2008, provided by the Lake-Sumter MPO.
The map was prepared using ArcGIS 9.3.1. The map was prepared using the following data sources:
- Aerial imagery, 2008, provided by the Lake-Sumter MPO.
- Topographic data, 2008, provided by the Lake-Sumter MPO.
- Road data, 2008, provided by the Lake-Sumter MPO.
- Water body data, 2008, provided by the Lake-Sumter MPO.
- Land use data, 2008, provided by the Lake-Sumter MPO.
- Population data, 2008, provided by the Lake-Sumter MPO.
- Rail data, 2008, provided by the Lake-Sumter MPO.
- Other data, 2008, provided by the Lake-Sumter MPO.