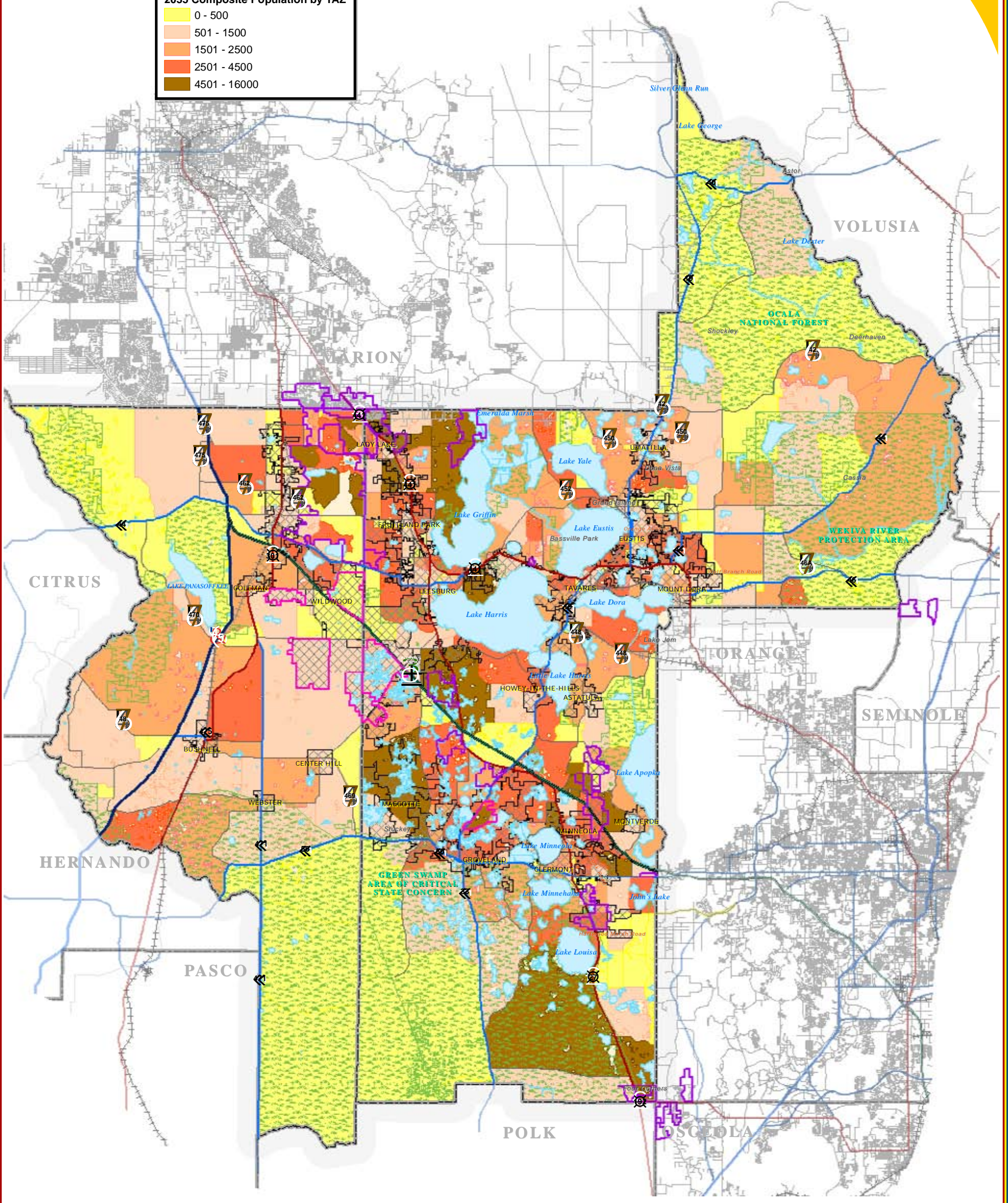
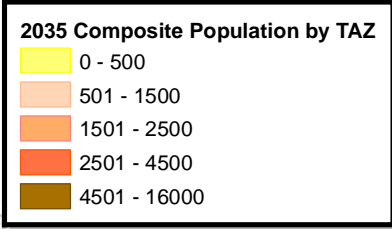


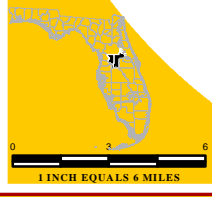
LUCIS COMPOSITE 2035 POPULATION



LEGEND

Water Body	County Road	Development of Regional Impact (DRI)
Conservation Areas	State Road	PROPOSED;
County Delineation	US Highway	PENDING
Municipal Area	Interstate	APPROVED
Active Railroad	Turnpike	

\\LakeSumterMPO\GIS\Project\Specific\Maps_Landuse\Workshop1142009\Landuse2035LUCISPop_TASKFORCES_LSMPO_11x17.mxd - 1/16/2009 @ 9:58:40 AM



TRANSPORTATION PLANNING AREA SUMTER AND LAKE COUNTY, FLORIDA



MAP COMPOSITION:
JANUARY 2009

DATA SOURCES:
Lake and Sumter County GIS Department; Planning
Data Compilation and Map production compliments of the
Lake-Sumter Metropolitan Planning Organization
This map product was prepared from a Geographic Information
System established by the Lake-Sumter Metropolitan Planning Organization and
Lake County Board of County Commissioners.
Its employees, agents and providers make no warranty as to its accuracy,
and in particular its accuracy as to existing, discontinued, obsolete,
property boundaries, or placement or location of any business therein.
The Lake-Sumter Metropolitan Planning Organization and
Lake County Board of County Commissioners, its employees, agents and
providers MAKE NO WARRANTY OF MERCHANTABILITY OR FITNESS FOR
PARTICULAR USE, FOR A PARTICULAR PURPOSE, OR PRESSURE OR IMPLIED
WITH RESPECT TO THIS MAP PRODUCT. Indemnification of all data
contained on this map product shall be obtained by the user of this map.