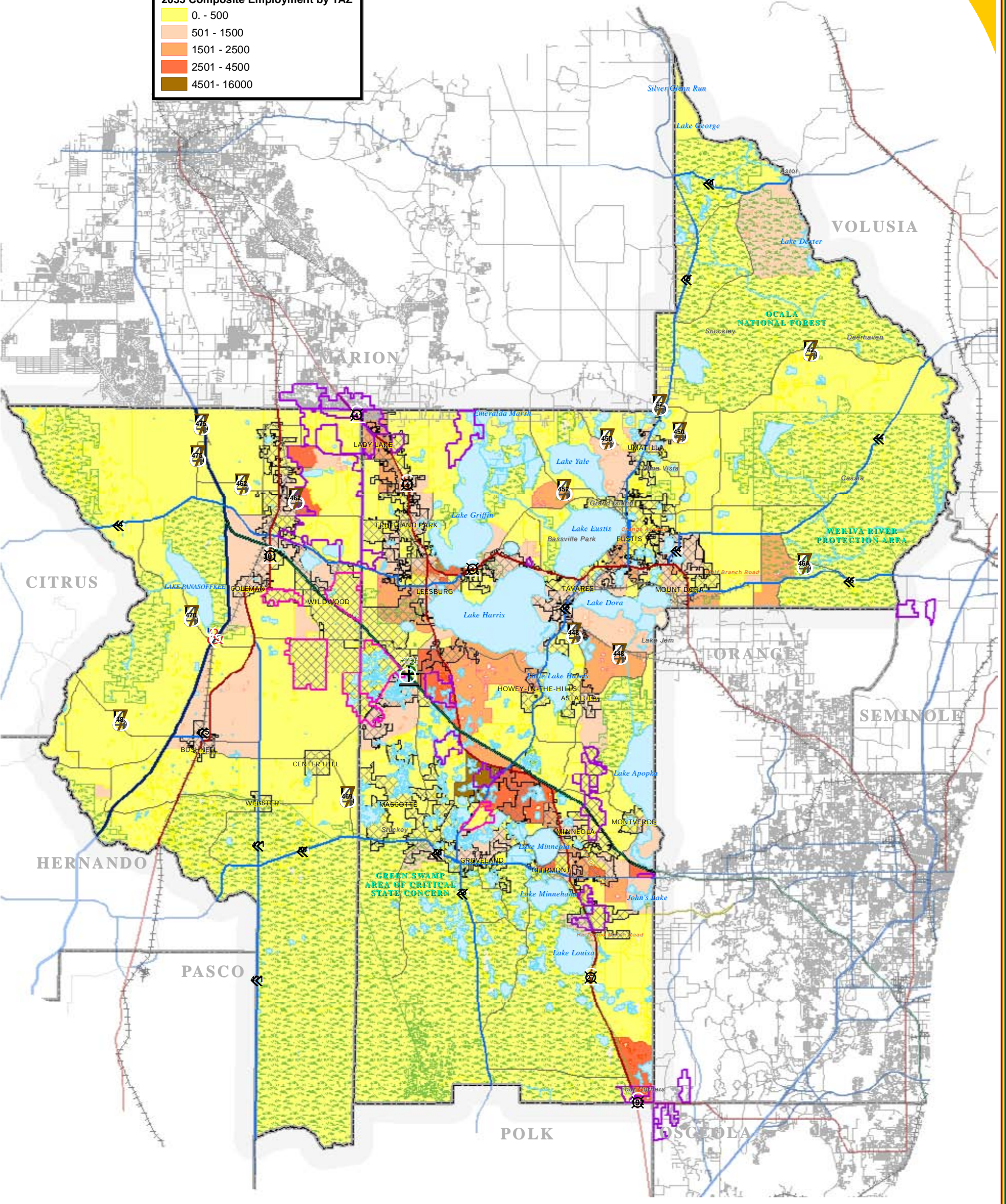
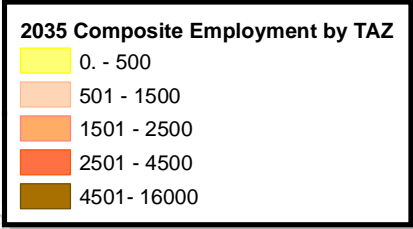
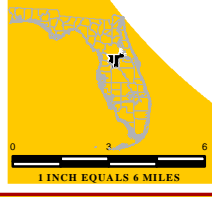


# LUCIS COMPOSITE 2035 EMPLOYMENT



- LEGEND**
- Water Body
  - Conservation Areas
  - County Delineation
  - Municipal Area
  - Active Railroad
  - County Road
  - State Road
  - US Highway
  - Interstate
  - Turnpike
  - Development of Regional Impact (DRI)**
  - PROPOSED;
  - PENDING
  - APPROVED

\\LakeSumterMPO\GIS\Project\Specific\Maps\_Landuse\Workshop1142009\Landuse2035\LUCIS\mxd - 1/16/2009 @ 9:51:55 AM



## TRANSPORTATION PLANNING AREA SUMTER AND LAKE COUNTY, FLORIDA



**MAP COMPOSITION:**  
JANUARY 2009

**DATA SOURCES:**  
Lake and Sumter County GIS Department; Planning  
Data Compilation and Map production compliments of the  
Lake-Sumter Metropolitan Planning Organization  
This map product was prepared from a Geographic Information  
System established by the Lake-Sumter Metropolitan Planning Organization and  
Lake County Board of County Commissioners.  
Its employees, agents and providers make no warranty as to its accuracy,  
and in particular its accuracy as to the following: demographics, economic  
property boundaries, or placement or location of any business therein.  
The Lake-Sumter Metropolitan Planning Organization and  
Lake County Board of County Commissioners, its employees, agents and  
providers MAKE NO WARRANTY OF MERCHANTABILITY OR FITNESS FOR  
PARTICULAR USE, FOR A PARTICULAR PURPOSE, OR FITNESS OR COMPLIANCE  
WITH RESPECT TO THIS MAP PRODUCT. Indemnification of all data  
contained on this map product shall be obtained by the user of this map.