

LAKE~SUMTER MPO 2035 TRANSPORTATION PLAN & LAND USE WORKSHOP



Wednesday, January 14, 2009
9:00 a.m. to Noon

Lake County Agricultural Center
1951 Woodlea Road
Tavares, Florida 32778

PROMOTING REGIONAL TRANSPORTATION PARTNERSHIPS

WELCOME

- Lake~Sumter MPO:
 - Governing Board
 - Technical Advisory Committee
 - Citizens' Advisory Committee
 - Bicycle & Pedestrian Advisory Committee
 - Lake County Transportation Disadvantaged Coordinating Board
 - Sumter County Transportation Disadvantaged Coordinating Board
- Elected Officials
- City & County Administrators and Staff
- Transportation Agencies
- Citizens and All Interested Parties

AGENDA

- 9:00 a.m. Welcome & Agenda
- 9:10 a.m. Long Range Transportation Plans
- 9:20 a.m. Land Use Projections
- 9:30 a.m. Comp Plan Trend - Presentation
- 10:00 a.m. Visionary Land Use - Presentation
- 10:30 a.m. Break
- 10:45 a.m. Discussion Groups
- 11:30 a.m. Discussion Group Summary
- 11:45 a.m. Next Steps

LONG RANGE TRANSPORTATION PLANS

- Required by Federal & State Statutes
- Urban areas with 50,000+ population
- At least 20-Year Planning Horizon
- Updated At Least Every 5 years
- Consistent with other agency plans
- Fiscally constrained - MUST BE COST FEASIBLE

LONG RANGE TRANSPORTATION PLANS

- Guides development of the five-year Transportation Improvement Program (TIP) & 15-to-20-year List of Priority Projects (LOPP)
- Encourage and promote the safe and efficient management, operation, and development of a cost feasible intermodal transportation system that will serve the mobility needs of people and freight within and through urbanized areas of this state, while minimizing transportation-related fuel consumption and air pollution

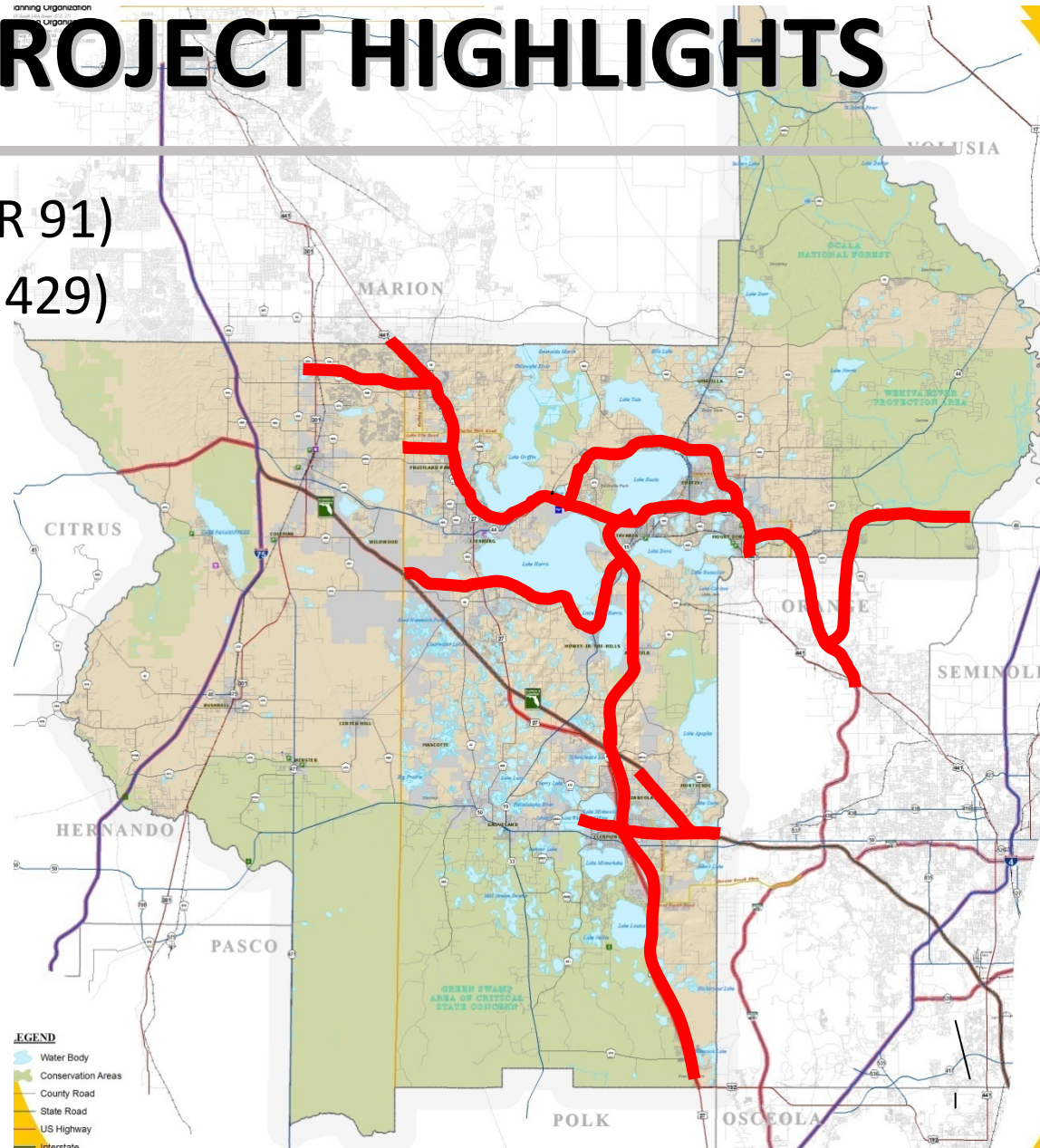
LAKE~SUMTER MPO 2025 LRTP



- Adopted December 14, 2005
- \$1,584,848,000 in needed projects
- \$780,445,000 in cost feasible projects

2025 LRTP PROJECT HIGHLIGHTS

- Florida's Turnpike (SR 91)
- Wekiva Parkway (SR 429)
- US 27
- US 441
- SR 19
- SR 44/CR 44
- SR 50
- CR 470/CR 48
- CR 466
- CR 466A
- CR 561

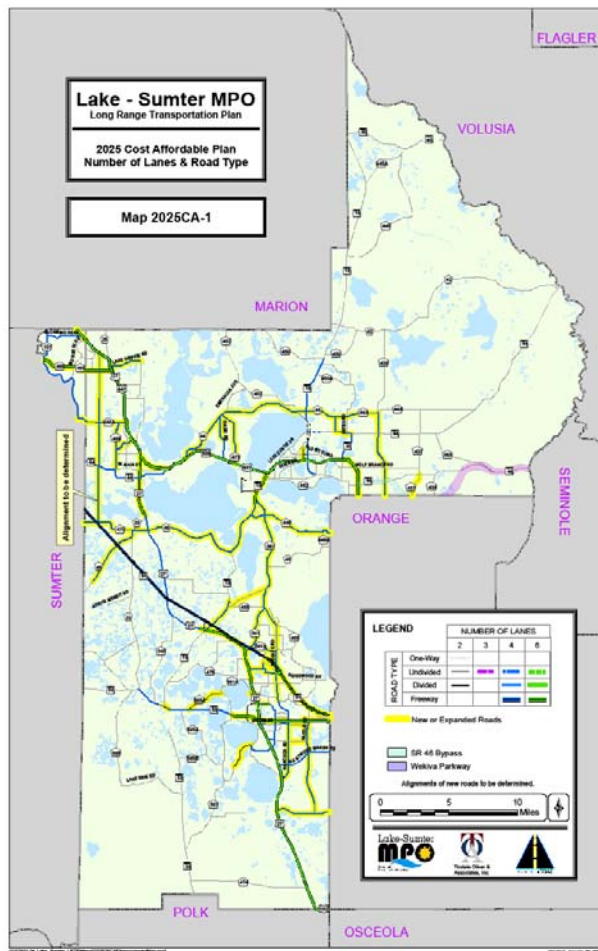


2025 LRTP FINANCIALS

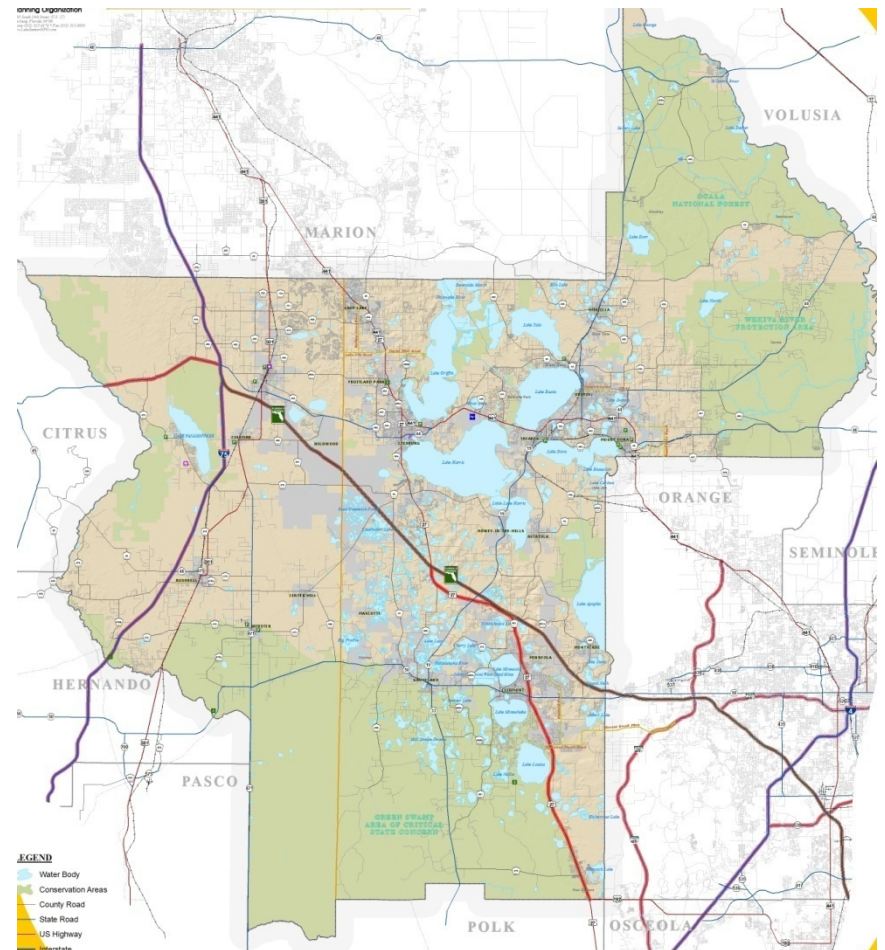
- Enhanced funding
 - Sales tax extension (2017)
 - Increased transportation impact fees
 - Fuel taxes were not supported
- Nearly \$1 billion shortfall
- Funding crisis!

2035 TRANSPORTATION PLAN

2025 LRTP Study Area



2035 Plan – True 2-County Plan



2035 TRANSPORTATION PLAN

- Project Milestones

- Work with committees and interested public to develop Preferred Land Use Data Set – January 2009
- MPO Adoption of Preferred Land Use Data Set – February to April 2009
- Produce Financial Resource Plan, Goals, Objectives and Policies, and Project Selection Criteria – January to September 2009
- Update CFRPM Model (FDOT) – April to September 2009
- Develop MPO Needs Plan – September 2009 to March 2010
- Develop MPO Cost Feasible Plan – September 2009 to May 2010
- Adopt 2035 Transportation Plan – August to October 2010

LAND USE PROJECTIONS

- Socioeconomic data projections
 - Population
 - Employment
 - School Enrollment
 - Hotel/Motel Occupancy
- Data aggregated to Traffic Analysis Zones (TAZ)
- Central Florida Regional Planning Model (CFRPM)
- Used to develop the MPO Needs Plan

HISTORIC DEVELOPMENT TRENDS

- Comprehensive Plans (21 in two-county region)
- Local Government Future Land Use Maps
- Trend – Municipal annexations leading to rezonings and comp plan amendments
- Sprawl
- Leads to need for widening more roads, installing additional infrastructure

VISIONING

- Visioning Exercises
 - Central Florida: How Shall We Grow?
 - Lake County: Our Community – Our Future
 - Sumter County
 - City of Wildwood
 - City of Tavares
 - City of Eustis
 - City of Mount Dora
- Desire of the Public – What are we to become?

How Shall We Grow?

- Partnership
 - How Shall We Grow
 - Central Florida MPO Alliance (six MPOs)
 - FDOT and DCA
 - East Central FL Regional Planning Council
 - Federal Highway Administration and Federal Transit Administration



Regional Growth Vision 2050



FRAMEWORK OF IDEAS

- How Shall We Grow Concepts:
 - Centers
 - Corridors
 - Conservation
 - Countryside
- Our Community – Our Future: adopted same policy framework
- Sumter and Wildwood focusing on coordination
- Other municipalities creating community visions around downtowns and growth areas

ALTERNATIVE LAND USE SCENARIOS

- Trend Land Use Scenario
 - FLUAM: Future Land Use Allocation Model
 - Data Transfer Solutions, ECFRPC, FDOT
- Vision Land Use Scenario
 - LUCIS: Land Use Conflict Identification Model
 - University of Florida, ECFRPC

PRESENTATIONS

DISCUSSION GROUPS

- **LAND USE**

Two differing approaches to developing Future Land Use projections have been presented today. Which do you believe will provide for the most accurate forecast, resulting in a 2035 Transportation Plan that balances the needs and desires of the Lake-Sumter MPO planning area?

- **FUNDING**

With a clear shortfall in funding, how would you suggest we fill the gap for transportation? What types of funding sources do you feel are most appropriate?

- **ROADWAYS**

What roadway improvements that you have heard discussed at the MPO level would you consider as imperative or unavoidable due to safety, congestion, economic development, etc.?

What roadway improvements that you have heard discussed at the MPO level should be removed from consideration due to environmental, physical, fiscal or policy constraint, or any other reason?

- **TRANSIT**

In addition to US 441 and SR 50, what corridors do you see as future mass transit corridors with potential for fixed guide-way systems?

NEXT STEPS

- Evaluate and select preferred land use data set
- Update the 2035 CFRPM (FDOT)
- Produce financial resource plan
- Draft Goals, Objectives and Policies
- Develop selection criteria
- Develop MPO Needs Plan
- Develop MPO Cost Feasible Plan
- Adopt the Lake~Sumter MPO 2035 Transportation Plan