

Title VI Program Update



April 24, 2024

Title VI Nondiscrimination Plan & Limited English Proficiency Plan

- Overview of Requirements
- Summary of LSMPO Trends
- LSMPO Practices

Overview of Regulations/Guidance

- Title VI – Law
 - » Prohibits Discrimination
 - » Race, Color, National Origin
- Environmental Justice – Executive Order
 - » Minimize Negative Impacts
 - » Minority, Low Income
- Limited English Proficiency – Executive Order
 - » Meaningful Access – Translations, etc.

Overview of Regulations/Guidance

- Americans with Disabilities Act (ADA) – Law
 - » Prohibits discrimination against individuals with disabilities in all areas of public life
- U.S. DOT
 - » Supports equity across the department's policies and programs, with an aim of reducing inequities across transportation systems and communities they affect
- Justice40
 - » Deliver at least 40 percent of the overall benefits from Federal investments in climate and clean energy to disadvantaged communities



General Requirements

- Public Outreach Methods
- Steps to Ensure Meaningful Access
- Limited English Proficiency (LEP) Plan
- Process for Title VI Complaints
- Title VI Notices to the Public

Title VI and Other Nondiscrimination Policy Plan Update Objectives

- Identify and analyze relevant demographic data in Lake and Sumter counties to further the effectiveness of the Title VI Nondiscrimination Plan and to ensure that planning products analyze, mitigate, minimize, or avoid disproportionate and adverse impacts on identified minority or low-income communities;
- Engage citizens and other interested parties in LSMPO activities through broad notification and proactive opportunities for full and fair participation by communities traditionally underserved in the planning process (i.e., environmental justice); and
- Comply with federal and state requirements associated with Title VI nondiscrimination and the transportation planning process.

Title VI Plan – Key Updates

- Updated all demographic tables and maps
- Ethnicity breakdown with changes in the MPO Planning Area between 2018 and 2021
 - » All categories experienced a change of 1% or less, either increase or decrease
 - » Most significant decrease in the **Some other race category**, both in absolute numbers (-4,820) and percentage (from 1.5% to 0.5%)
 - » Most significant increase in the **African American** population saw an increase in both absolute numbers (2,091) and percentage (from 9.7% to 10.7%)
 - » The LEP population for the LSMPO planning area slightly increased from 3.7% to 3.9% with Spanish remaining at the top for LEP persons

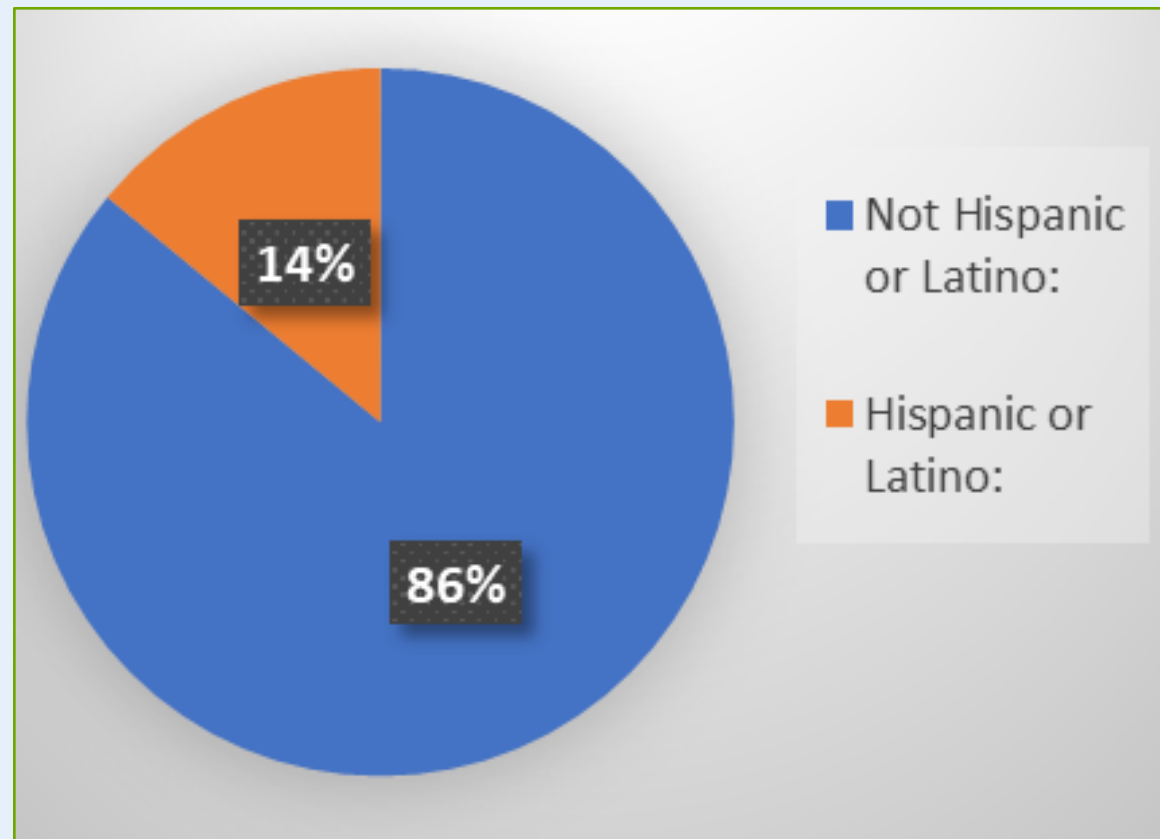
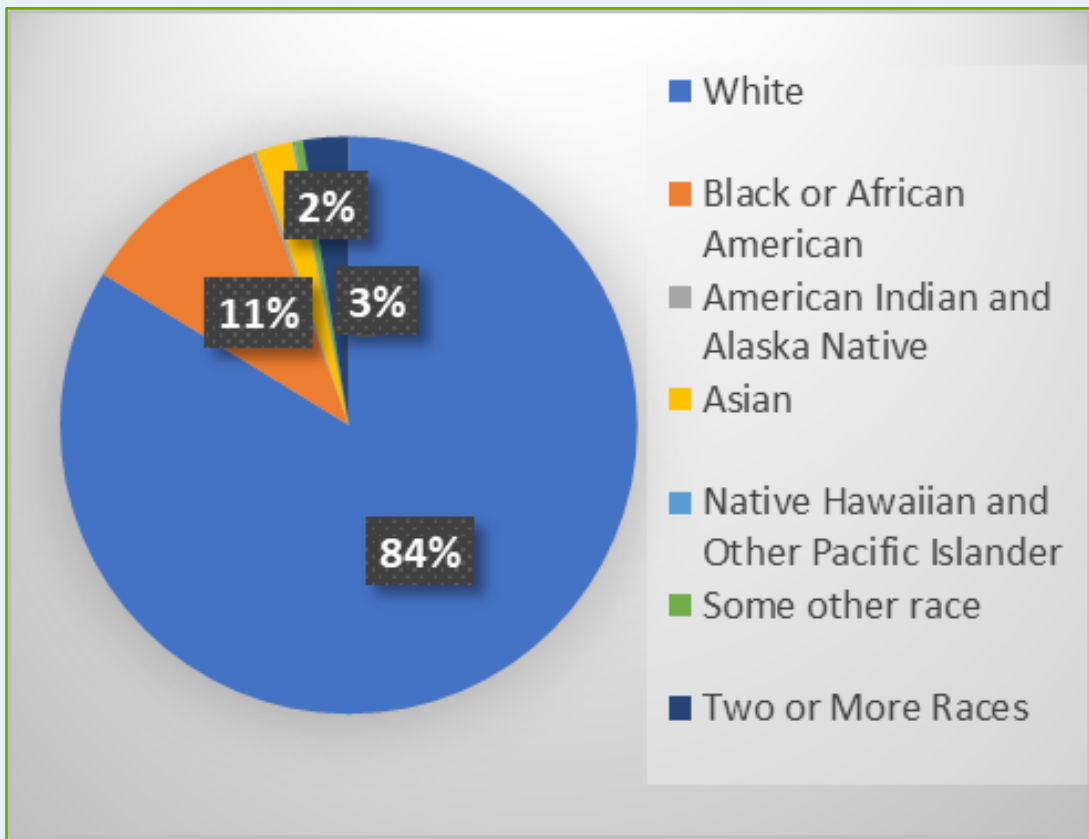
LEP Plan – Key Updates

- LSMPO policies and requirements remained the same
- Non-substantive revisions include updated references to the PPP rather than the PIP and references to the new year data sets
- The LSMPO website will be updated to include a link to the adopted version
- Adopted version of the document will be ADA accessible

Ethnic Breakdown and Changes

MPO Planning Area	2018	2021	Pop. Change	2018 Percent	2021 Percent	% Change
White	385,797	361,763	-24,034	84.5%	83.8%	-0.8%
Black or African American	44,297	46,388	2,091	9.7%	10.7%	1.0%
American Indian and Alaska Native	1,787	1,271	-516	0.4%	0.3%	-0.1%
Asian	7,674	8,910	1,236	1.7%	2.1%	0.4%
Native Hawaiian and Other Pacific Islander	245	504	259	0.1%	0.1%	0.1%
Some other race	6,789	1,969	-4,820	1.5%	0.5%	-1.0%
Two or More Races	9,772	11,052	1,280	2.1%	2.6%	0.5%

Ethnic Makeup of Lake~Sumter MPO Region



Limited English Proficiency (LEP)

Language Spoken	Speak English "less than very well"	Percent of MPO Population	Percent of LEP Population
Spanish	12,682	2.6%	74%
Indo-European languages:	2,123	0.4%	12%
Speak Asian and Pacific Island languages:	2,036	0.4%	12%
Various other Languages	392	0.1%	2%
Total:	17,233	3.6%	100%

Updated Map Series

Figure 4. Lake-Sumter MPO Planning Area Populations Living in Poverty

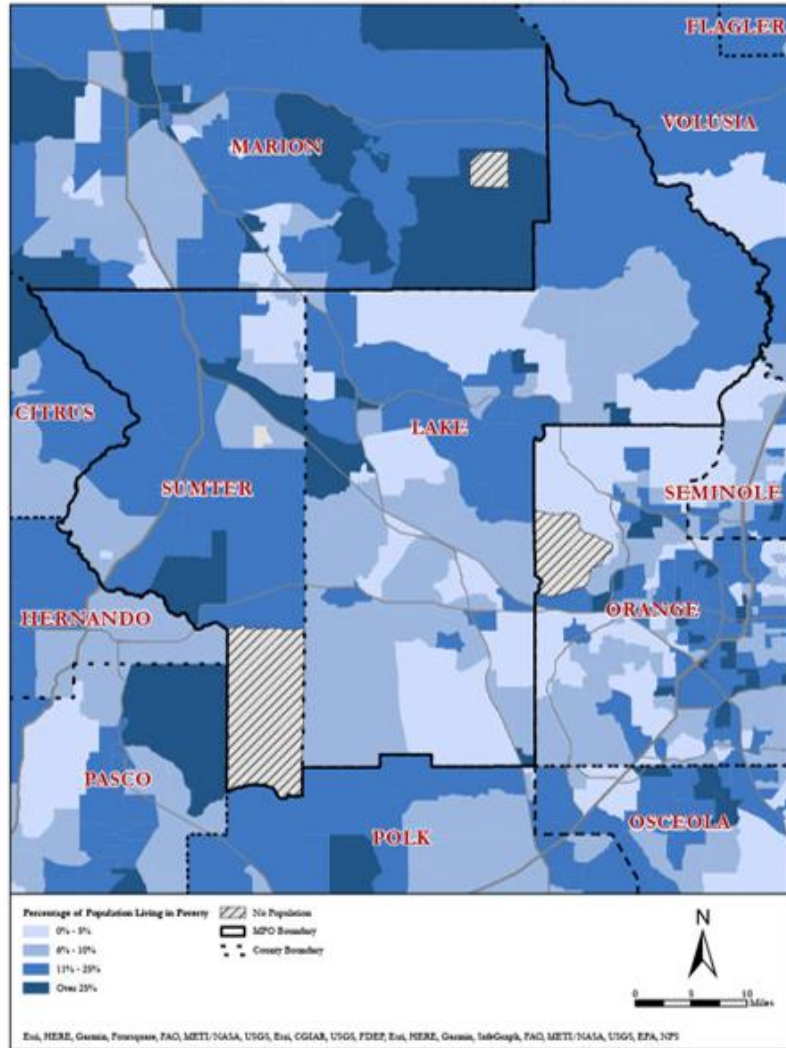


Figure 5. Lake-Sumter MPO Planning Area Minority Group Populations

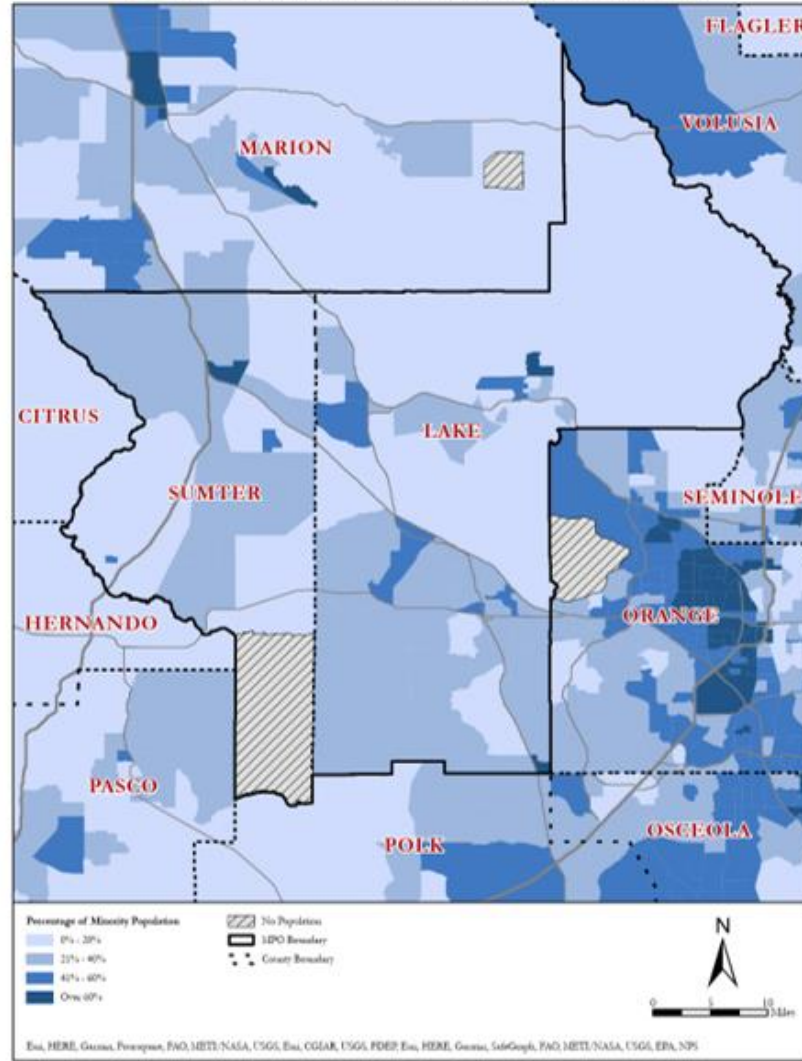
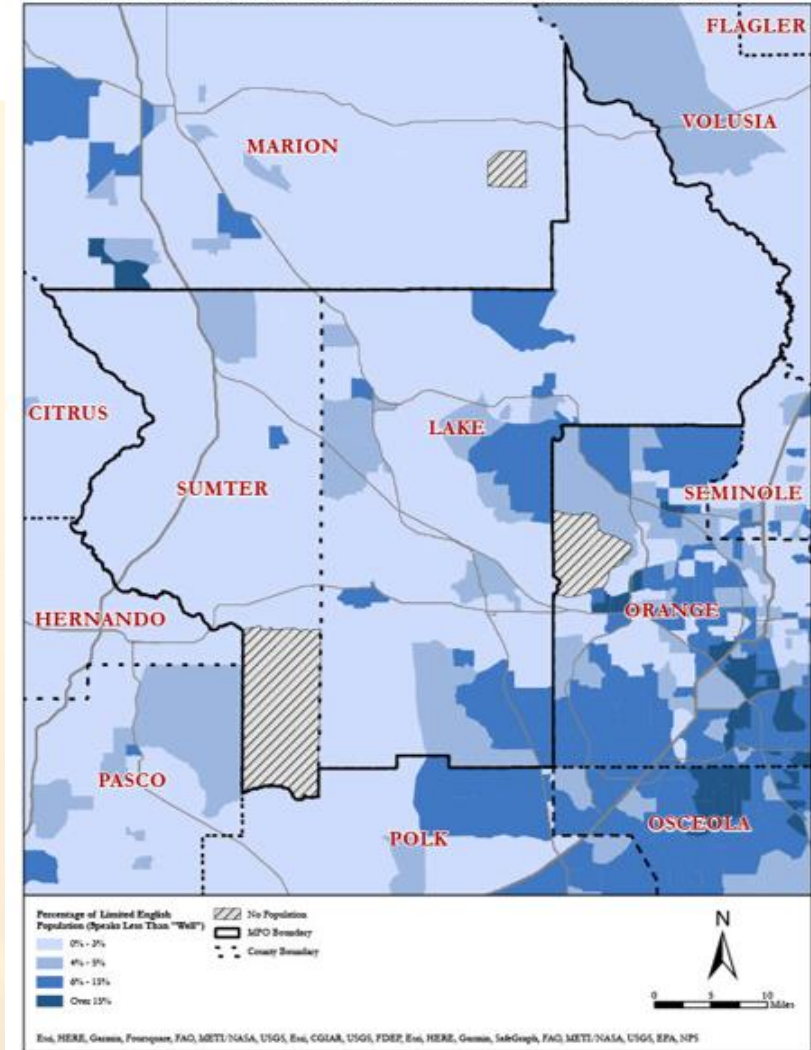


Figure 3. Lake-Sumter MPO Planning Area Limited English Proficiency Populations



LSMPO Noteworthy Practices

- Joint Advisory Committee Meetings
- Public Participation Plan
- Transportation Disadvantaged Coordinating Board (TDCB)
- Annual Rider Surveys to Review TD Services
- Graphical Displays/Visualizations
- Online/In-Person Outreach

A perspective view of a road stretching towards a bright, hazy horizon. The road surface is dark, and the year '2020' is painted in large, light-colored, 3D-style characters on the pavement. The sun is low on the horizon, creating a strong lens flare and a warm, golden glow that illuminates the scene. The background shows a blurred landscape of fields and a clear sky.

Questions & Thank you