



South Sumter Middle School

CR 730/NW 10th Ave

End of Study Corridor

Sumter County Farmers Market

CR 478/NW 4th Ave

City Hall

West Central Ave

SE 1st Ave

Webster Elementary School

SE 3rd Ave

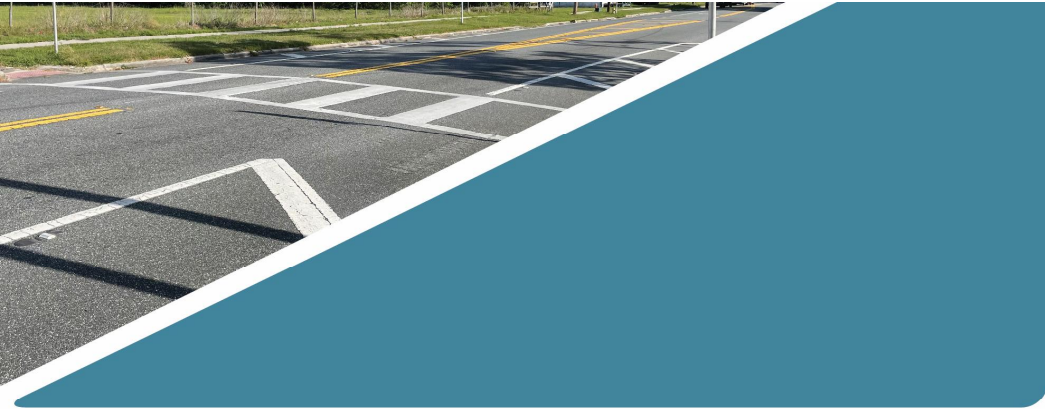
Public Library

Beginning of Study Corridor

CR 478A

Fire Station

SR 471



SR 471

COMPLETE STREETS STUDY

Community Workshop – June 9, 2021

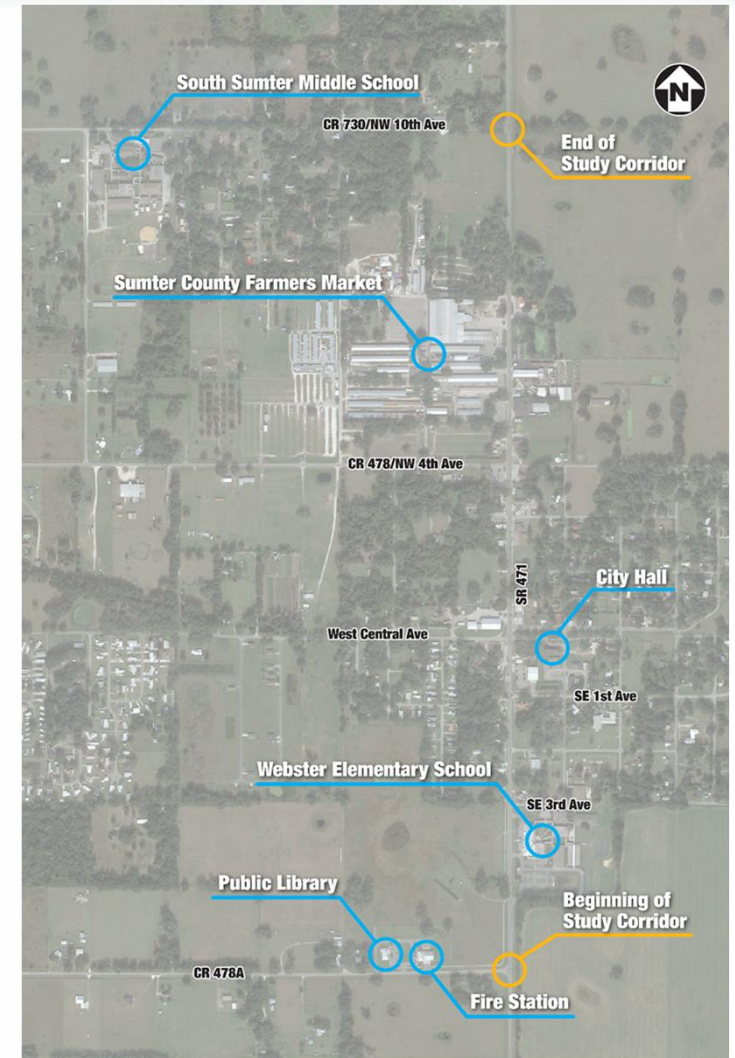


Agenda

- Project Objectives & Areas of Focus
- Project Scope/Schedule
- Previous Studies/Crash Data
- Breakout Session

Project Corridor

- SR 471 from CR 478A to CR 730



Project Objectives & Areas of Focus

- Objective: Assess the feasibility of and develop concepts for improved multimodal safety and mobility along the corridor.
- Areas of Focus:
 - Existing and future traffic patterns
 - Speeding traffic
 - Bicycle/pedestrian modes
 - Crosswalks
 - On-street parking
 - Beautification

Project Scope/Schedule

	June 2021	July 2021	August 2021	September 2021	October 2021	November 2021	December 2021	January 2022	February 2022	March 2022	April 2022	May 2022	June 2022
Community Workshop and Stakeholder Meetings	█												
Literature and Crash Data Review	█												
Online Survey	█	█											
Data Collection and Field Reviews					█								
Existing and Future Conditions Analysis						█	█						
Development of Improvement Options								█	█	█			
Corridor Recommendations											█	█	
Study Complete													█

Previous Studies

PRELIMINARY ENGINEERING REPORT

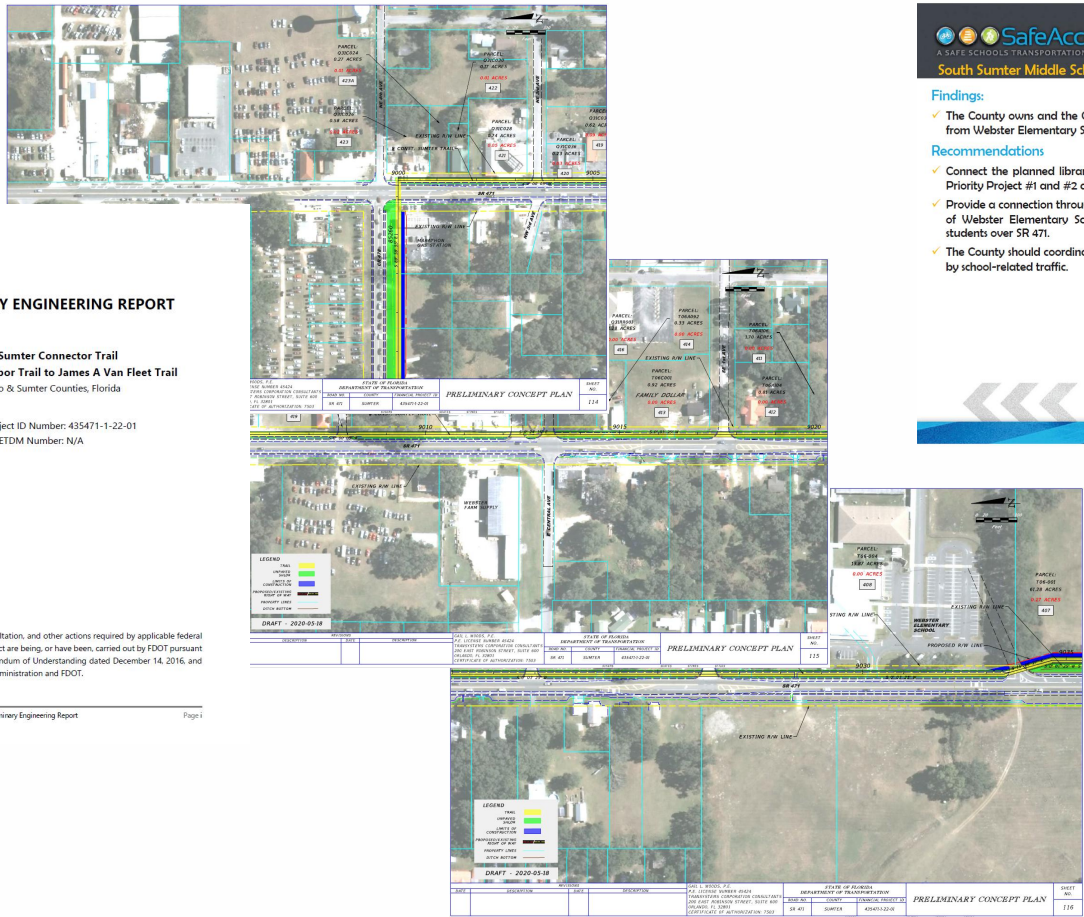
South Sumter Connector Trail
From Good Neighbor Trail to James A Van Fleet Trail
Hernando & Sumter Counties, Florida

Financial Project ID Number: 435471-1-22-01
ETDM Number: N/A

The environmental review, consultation, and other actions required by applicable federal environmental laws for this project are being, or have been, carried out by FDOT pursuant to 23 U.S.C. 1527 and a Memorandum of Understanding dated December 14, 2016, and executed by Federal Highway Administration and FDOT.

South Sumter Connector Trail - Preliminary Engineering Report

Page 1



Planned Project:
Library and Fire Station across from
Webster Elementary School

Findings:

- ✓ The County owns and the City uses and maintains recreational fields on the west side of SR 471 across from Webster Elementary School. Future plans for this site include a library and fire station.

Recommendations

- ✓ Connect the planned library and fire station to the proposed Central Avenue Trail and SR 471 (See Priority Project #1 and #2 at the end of this report).
- ✓ Provide a connection through the County-owned site that will link to the crosswalks over SR 471 in front of Webster Elementary School. If implemented, a crossing guard may be needed to safely cross students over SR 471.
- ✓ The County should coordinate with the school district to ensure emergency access will not be impacted by school-related traffic.



A crosswalk exists over SR 471 in front of Webster Elementary School.



Traffic Impact Analysis - REVISED

RV Park
Webster, Florida

31 May 2019



Breakout Session

- Two Sets of Boards:
 - Corridor Aerial Maps
 - Identify locations of need
 - Improvement Elements
 - Vote for top 3 elements you would like to see implemented along the corridor
- Comment cards available to provide more detail.
- Online survey also available for input.
 - INCLUDE LINK HERE

Staff

- Ali Brighton, P.E. – Kimley-Horn and Associates Inc. – Project Manager
- Vincent Spahr, P.E. – Kimley-Horn and Associates, Inc. – Project Engineer
- Amber Gartner, P.E. – Kimley-Horn and Associates, Inc. – Project Engineer
- Jim Wood, AICP – Kimley-Horn and Associates, Inc. – Project Planner
- Caleb Reed - Kimley-Horn and Associates, Inc. – Project Analyst

Improvement Elements

With the stickers provided, indicate the top three infrastructure treatments that you would like to see implemented along the corridor.



Benches



Bicycle Parking



Crosswalks



Golf Cart Crossing



Lighting



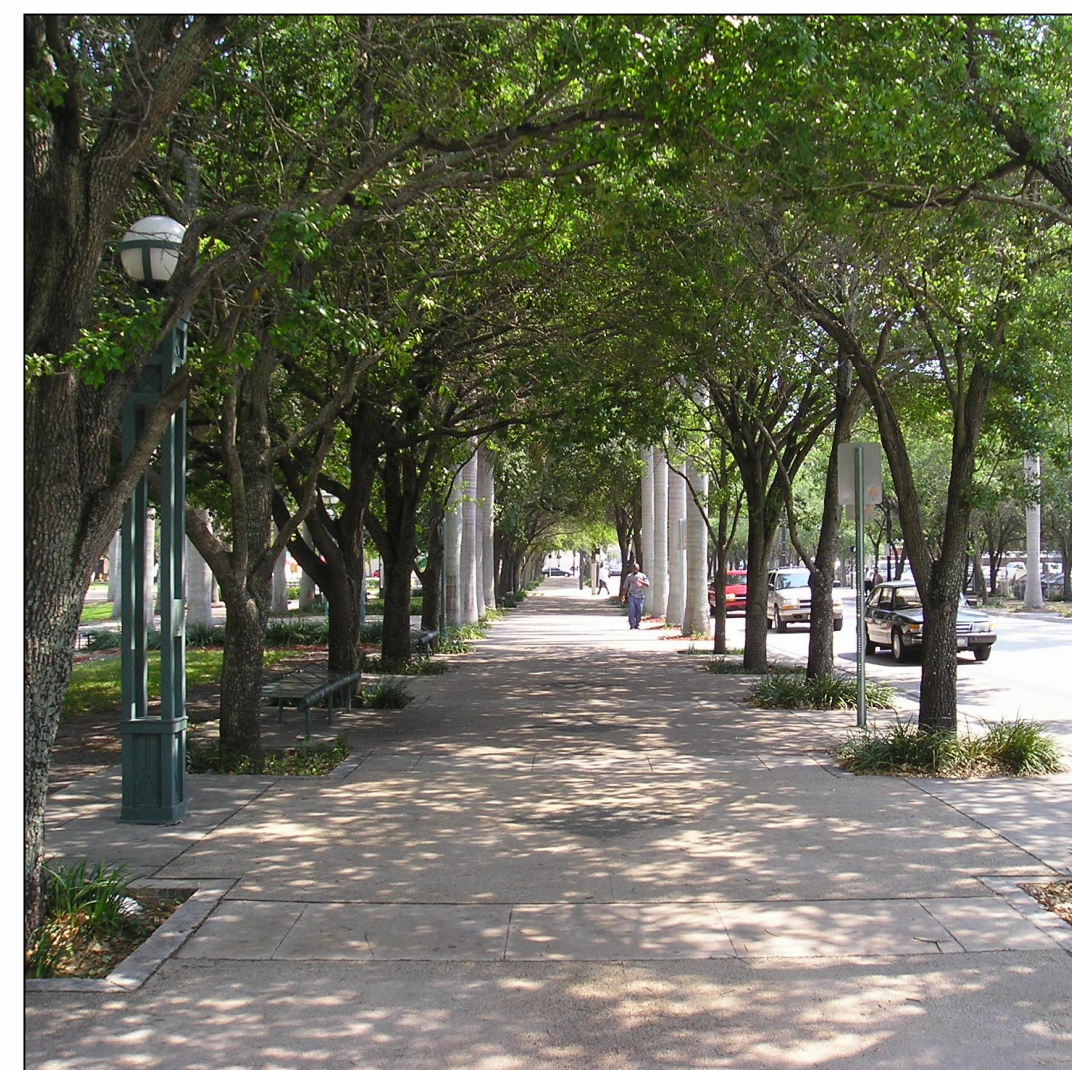
Median Islands



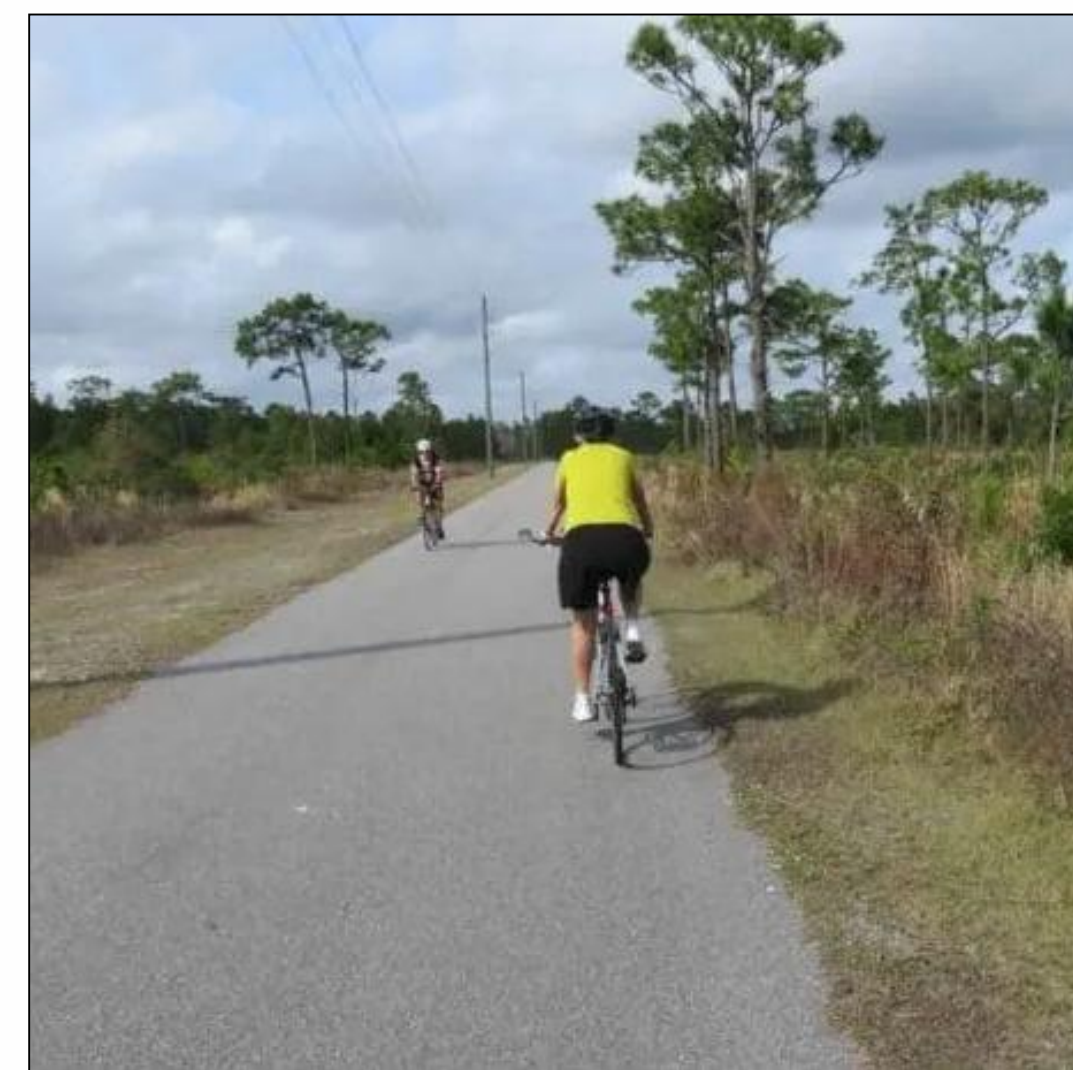
On-Street Bicycle Lanes



Removal of On-Street Parking



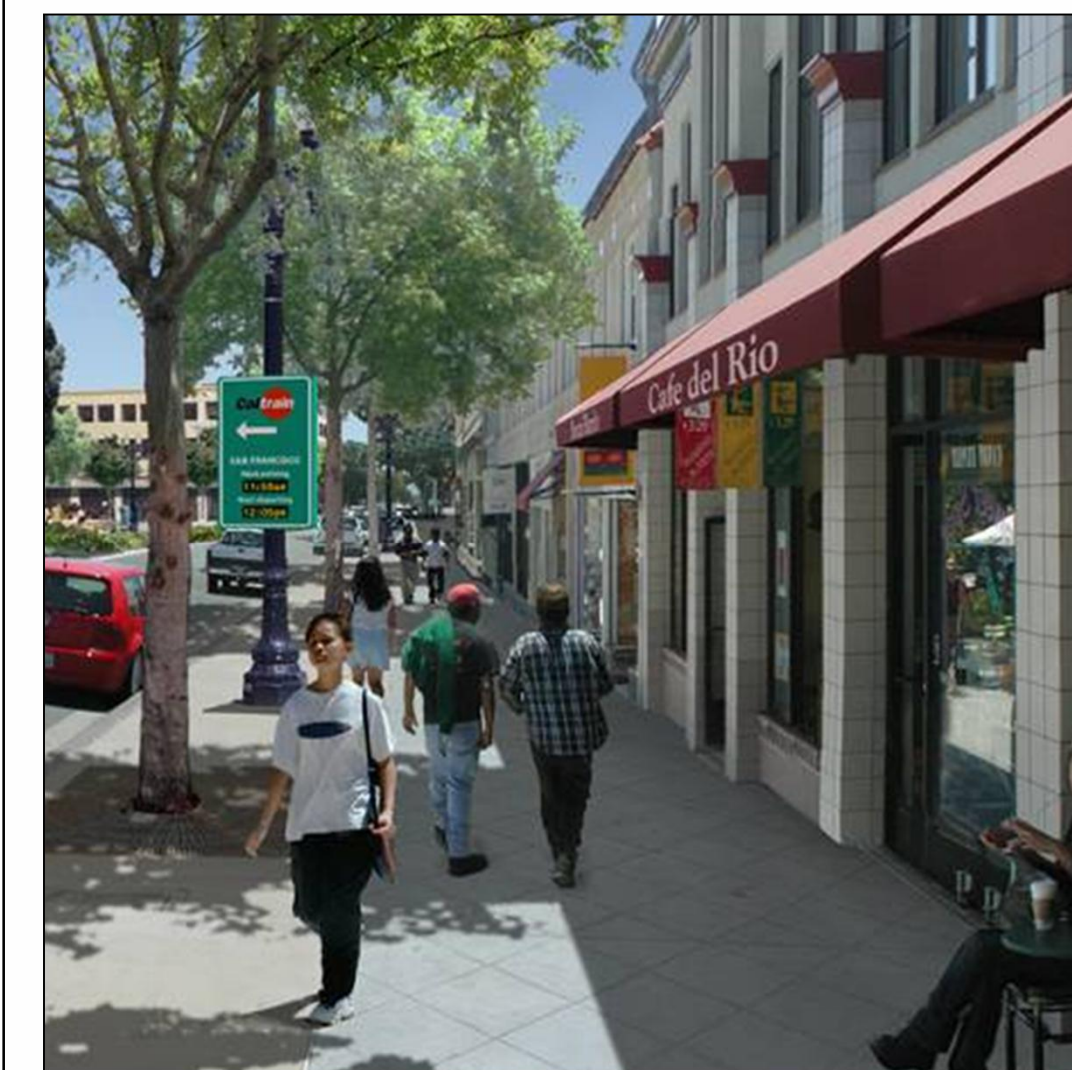
Shading/Trees



Trail



Traffic Calming



Wide Sidewalks