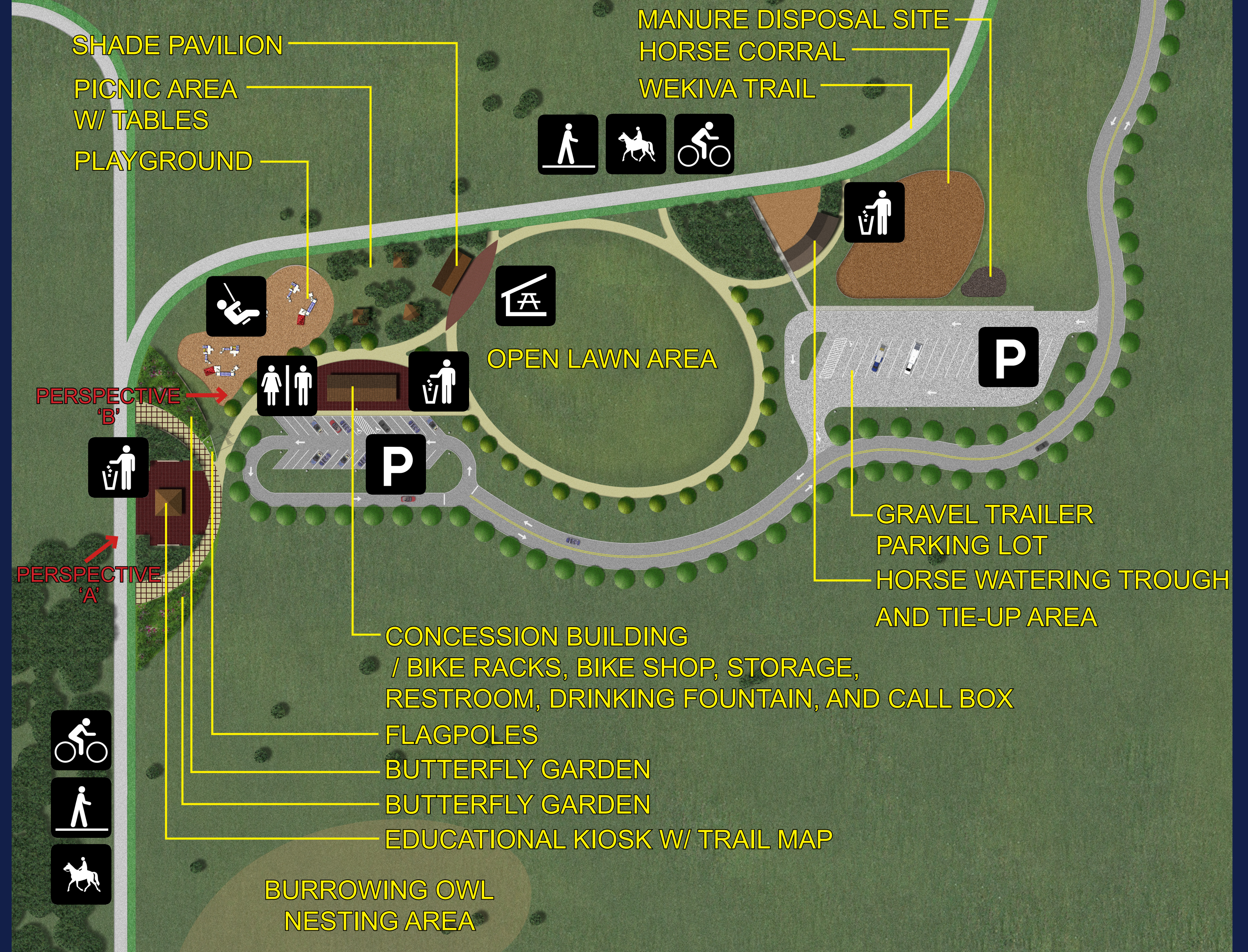


The Neighborhood Lakes Trail is consistent with the Lake County Parks & Trails Master Plan and Parks & Recreation Master Plan.

Amenities:

- Main trailhead with pavilion and amenities similar to those at the East Lake Community Park
- Education panels similar to those at Ferndale Preserve
- Kiosks identical to those along the South Lake Trail
- Gate similar to North Shore Overlook and Trailhead
- Shelters and pavilions similar to those used at other parks and preserves
- Equestrian facilities
- Restrooms, playground, and other amenities consistent with a major trailhead
- Landscaping will all be with Florida native plants.

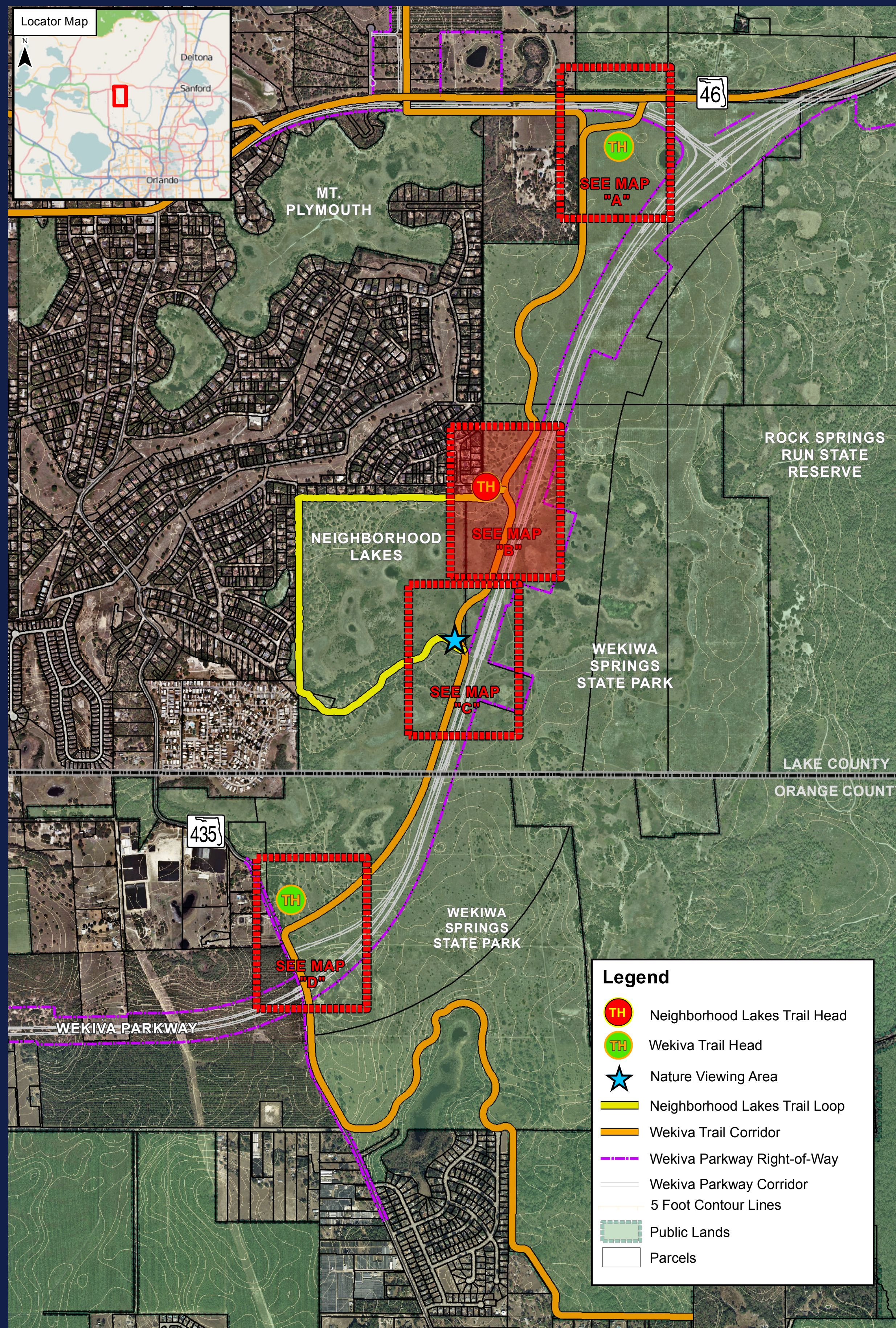
MAP "A" PLAN VIEW



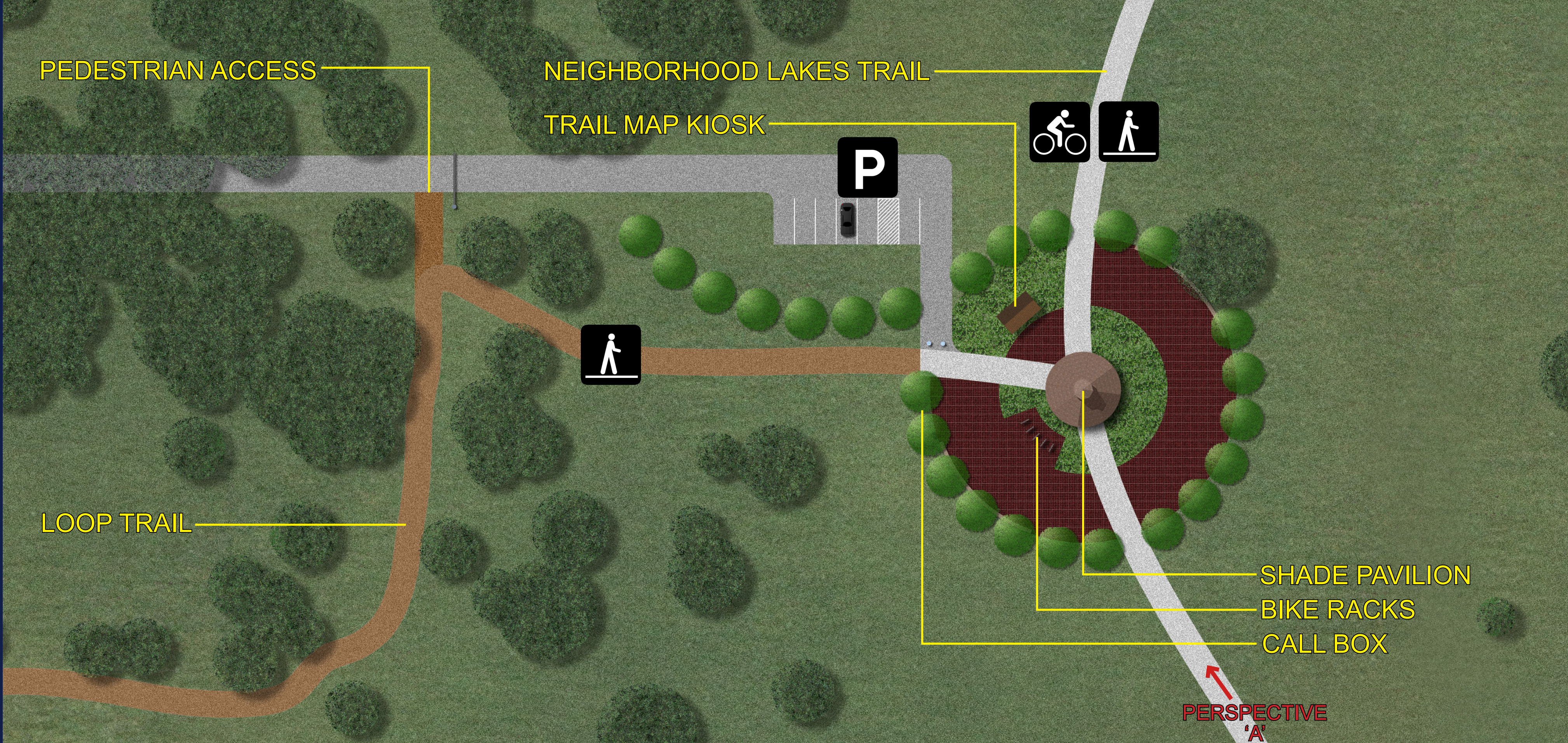
Wekiva Trail

CONCEPTUAL SR 46 TRAILHEAD





MAP "B" PLAN VIEW



The Neighborhood Lakes Trailhead is consistent with the Lake County Parks & Trails Master Plan and Parks & Recreation Master Plan. Amenities will be consistent with those found at minor trailheads and passive area access points found through the county.

Amenities:

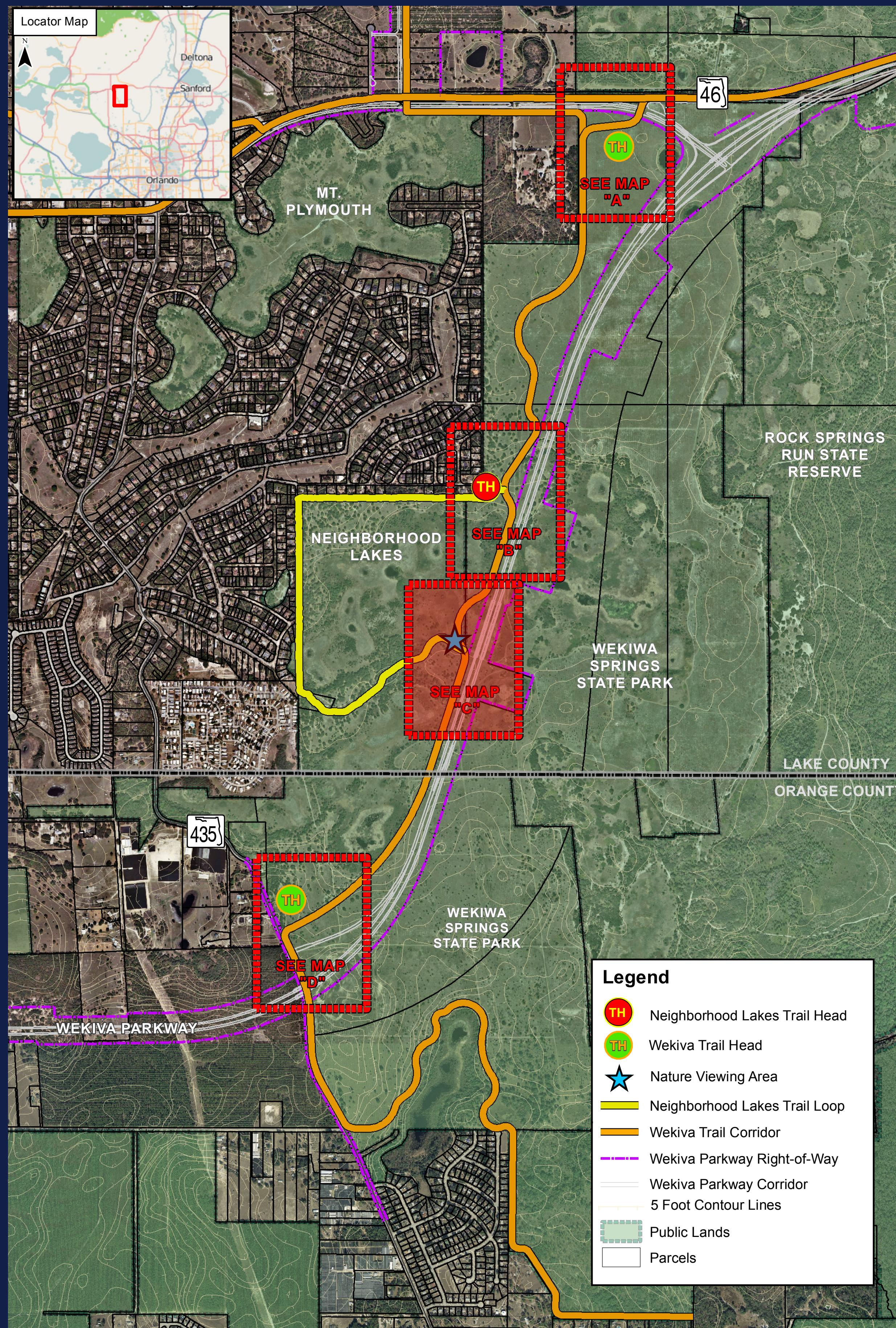
- Minor trailhead with pavilion
- Education panels similar to those at Ferndale Preserve
- Kiosks identical to those along the South Lake Trail
- Gate similar to North Shore Overlook and Trailhead
- Area will be landscaped with native plants



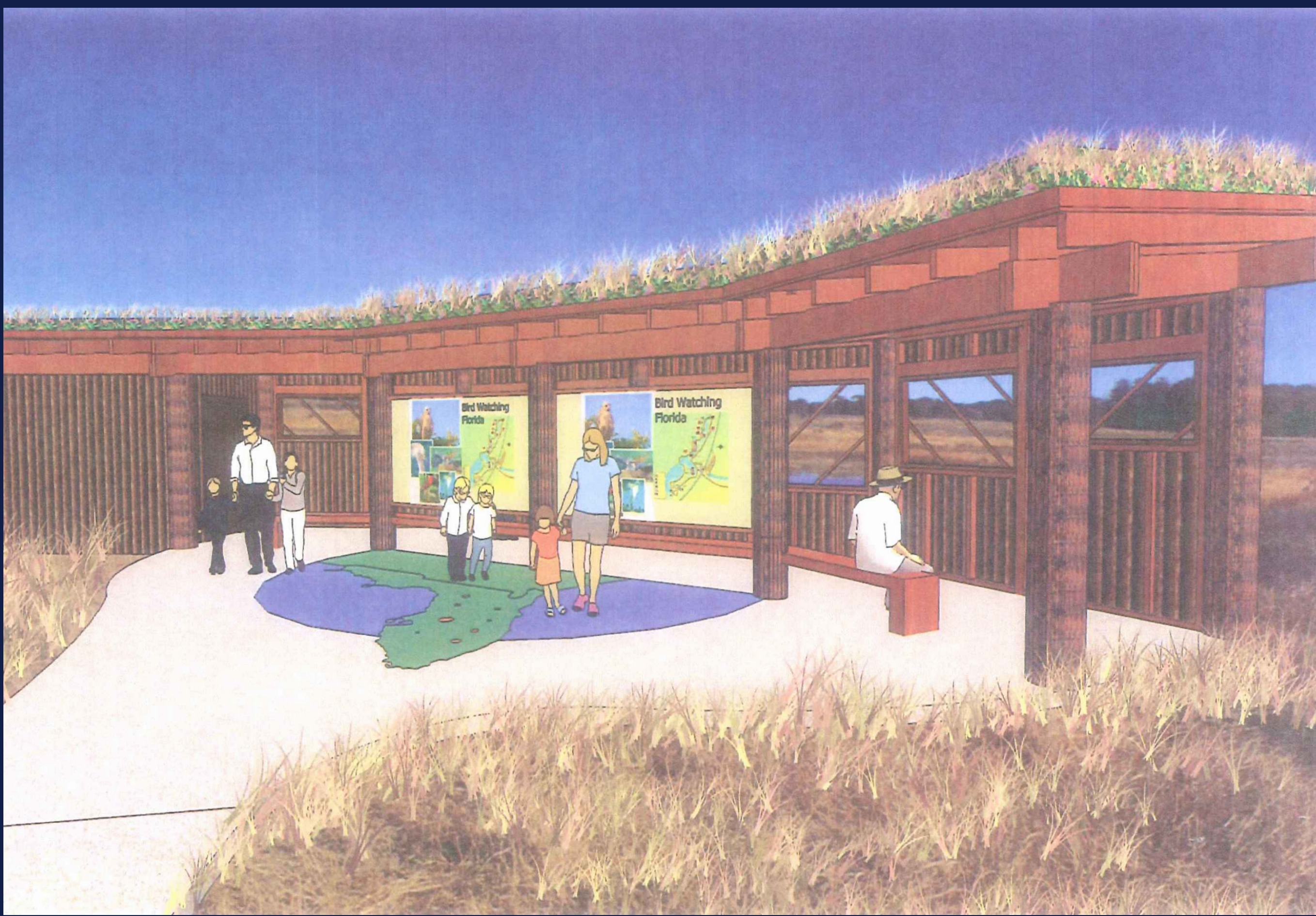
Neighborhood Lakes

CONCEPTUAL MINOR TRAILHEAD





MAP "C" PLAN VIEW



The Neighborhood Lakes Trail is consistent with the Lake County Parks & Trails Master Plan and Parks & Recreation Master Plan.

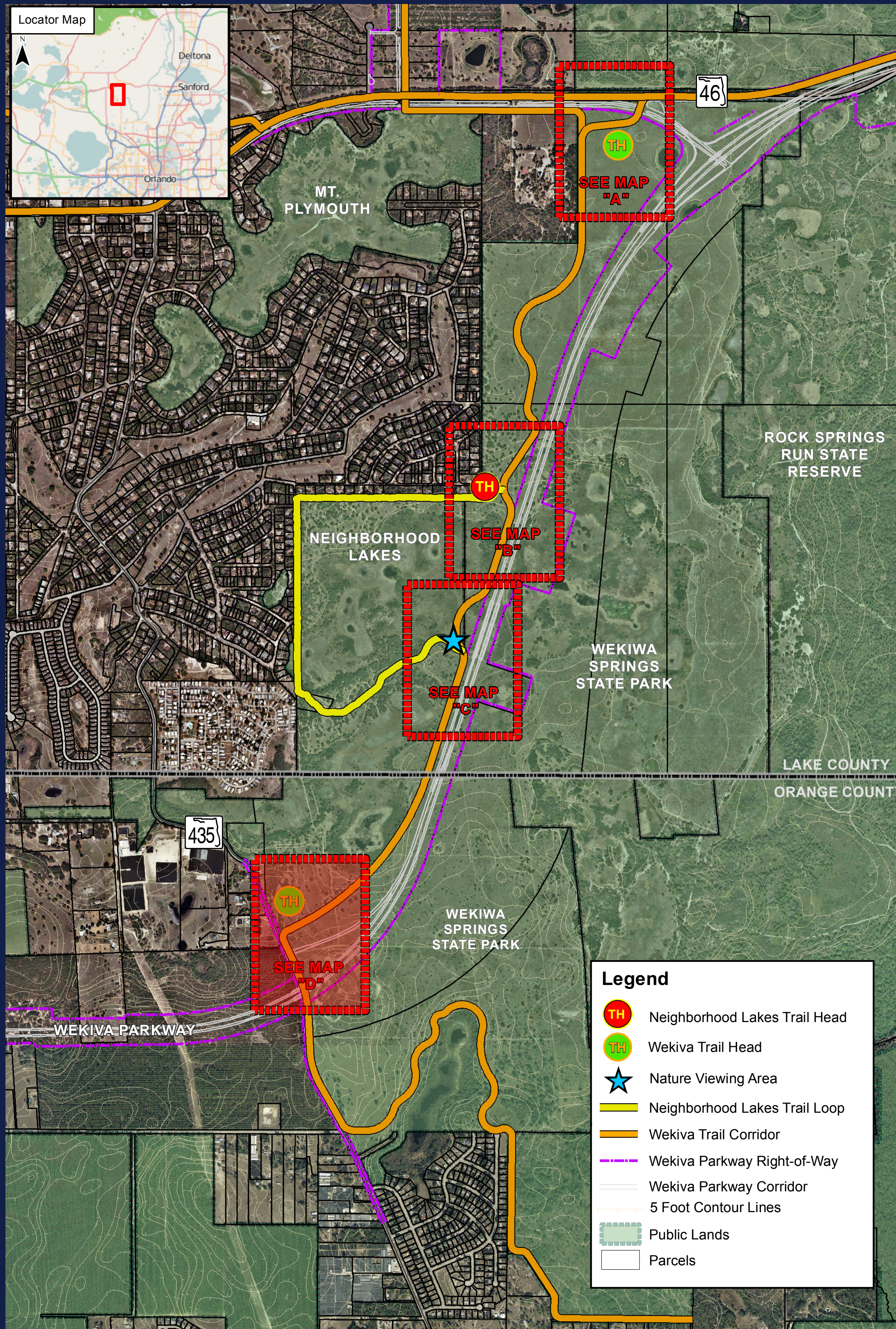
Amenities:

- Bird and wildlife observation blind similar to P.E.A.R. Park's
- Education panels similar to those at Ferndale Preserve
- Kiosks identical to those along the South Lake Trail
- Shelter and bicycle amenities consistent with others along the Wekiwa Trail in Lake County

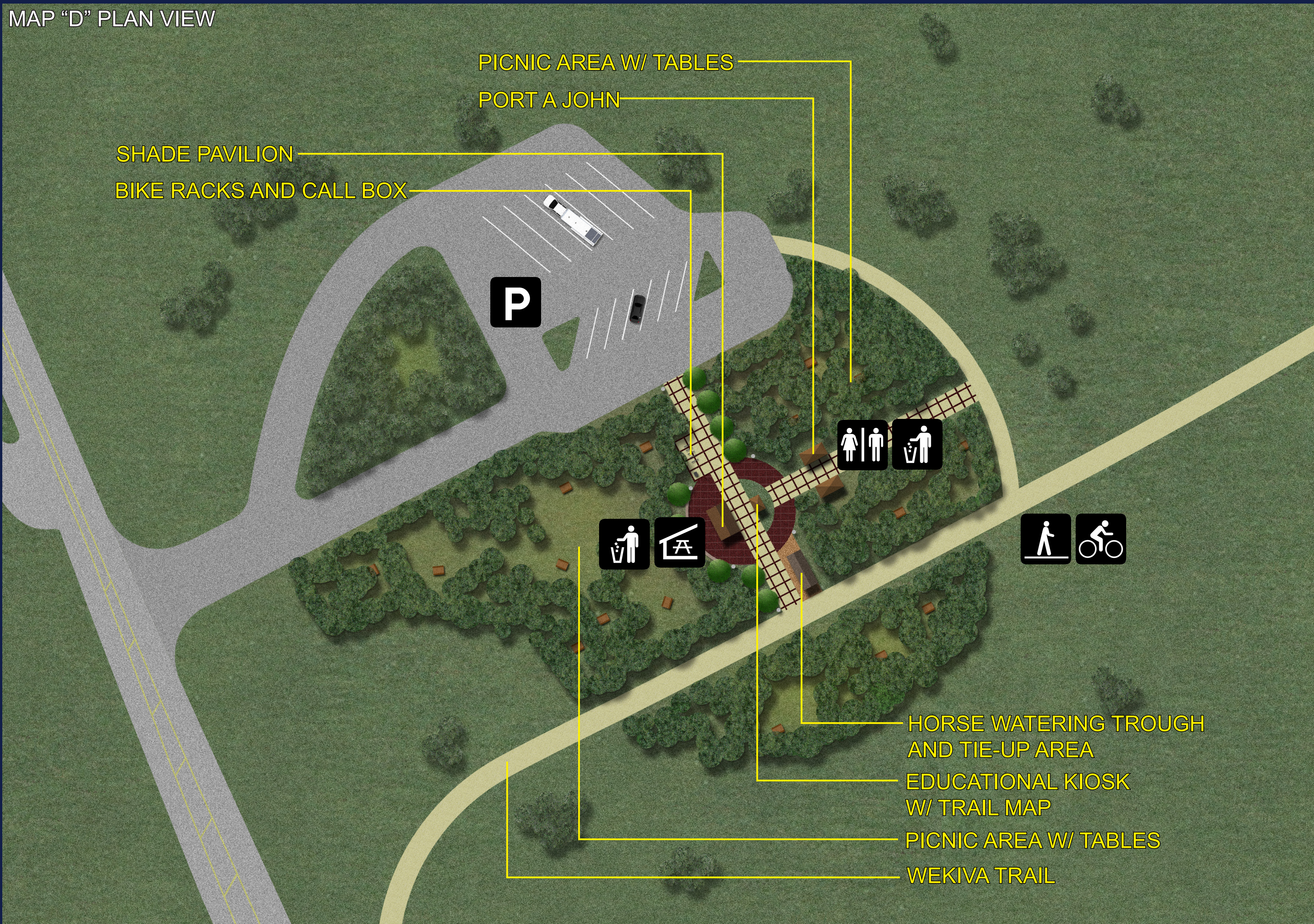
Neighborhood Lakes

CONCEPTUAL BIRD AND WILDLIFE OBSERVATION BLIND





MAP "D" PLAN VIEW



Wekiva Trail

CONCEPTUAL TRAILHEAD

