



**MOVING FLORIDA
FORWARD** 
Infrastructure Initiative

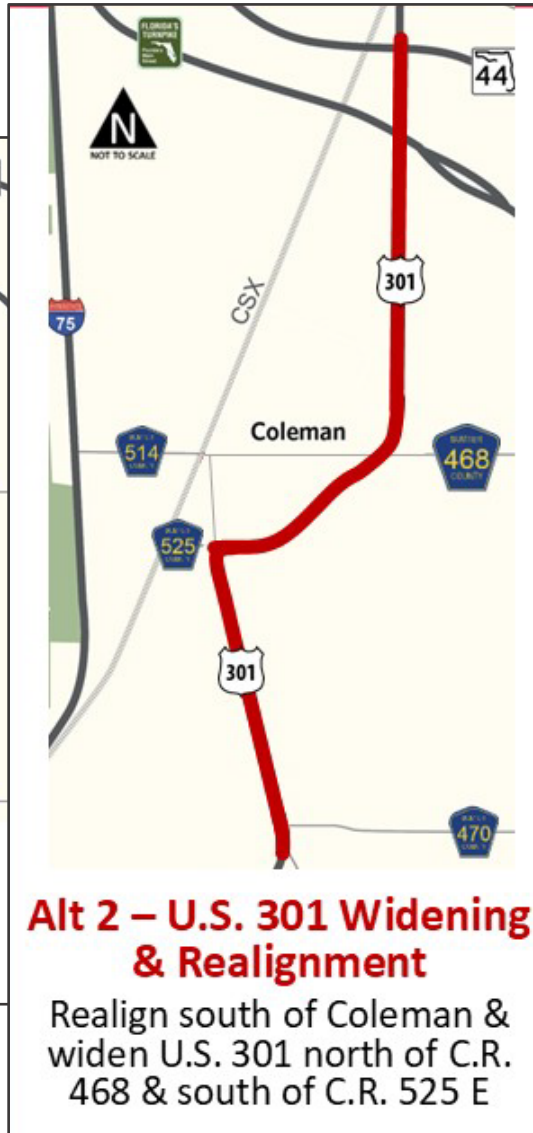
U.S. 301 Widening & Realignment

Presentation to: Lake Sumter MPO

February 26, 2025

FPID Nos.: 430132-2, 430132-4, 430132-5

Project Background



- » U.S. 301 currently a two-lane undivided roadway
- » PD&E Study completed in 2019 under FPID No. 430132-1
- » Three alternatives evaluated to increase capacity and safety
- » Design follows the identified preferred Alternative 2

Moving Florida Forward Investment

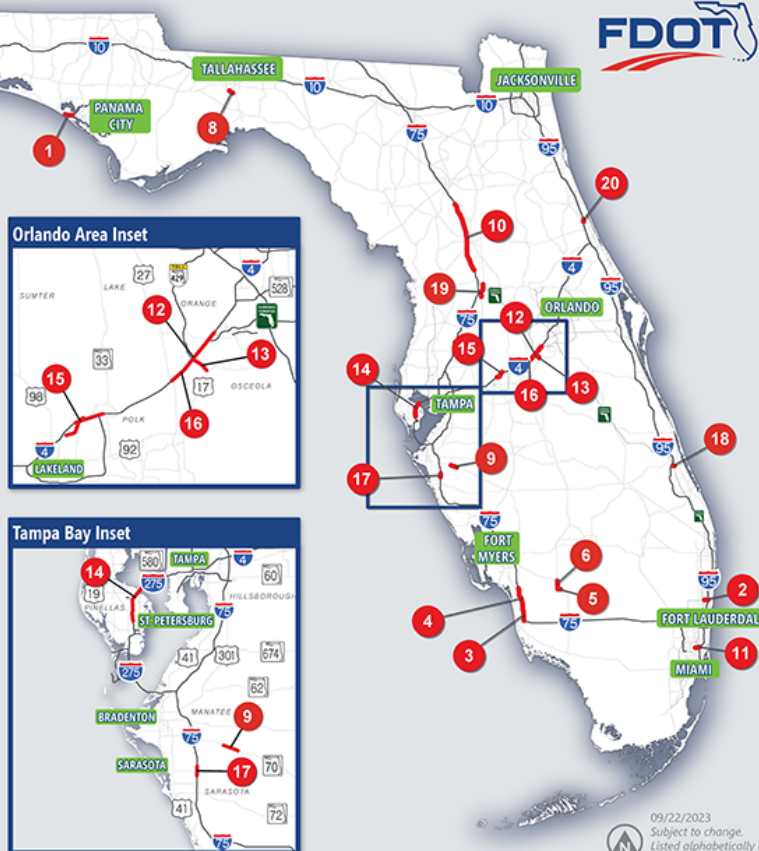
MOVING FLORIDA FORWARD Infrastructure Initiative

CONGESTION RELIEF PROJECTS

- | | |
|--|---|
| 1 U.S. 98 from R. Jackson Blvd. to Hathaway Bridge | 11 Golden Glades Interchange |
| 2 SW 10th St. | 12 I-4 from ChampionsGate to Osceola Pkwy. |
| 3 I-75 at Pine Ridge Rd. Interchange | 13 Poinciana Parkway Ext. Connector from C.R. 532 to S.R. 429 |
| 4 I-75 from Golden Gate Pkwy. to Corkscrew Rd. | 14 I-275 from 38th Ave. N to 4th St. N |
| 5 S.R. 29 from C.R. 846 E to New Market Rd. | 15 I-4 at S.R. 33 Interchange |
| 6 S.R. 29 from New Market Rd. to S.R. 82 | 16 I-4 from U.S. 27 to ChampionsGate |
| 7 I-10 from Eastbound weigh station to Nine Mile Rd. | 17 I-75 at Fruitville Rd. Interchange |
| 8 S.R. 263 from S.R. 61 to C.R. 2203 | 18 W Midway Rd. from Glades Cut Off Rd. to Jenkins Rd. |
| 9 S.R. 70 from Bourneside Blvd. to Waterbury Rd. | 19 U.S. 301 Realignment from C.R. 470 to Florida's Turnpike |
| 10 I-75 Auxiliary Lanes from S.R. 44 to S.R. 326 | 20 I-95 at U.S. 1 Interchange in Volusia Co. |



@MyFDOT
@MyFDOT



19

MOVING FLORIDA FORWARD Infrastructure Initiative



U.S. 301 Realignment from C.R. 470 to Florida's Turnpike

PROJECT DESCRIPTION

- Reconstruct U.S. 301 from C.R. 470 to FL's Turnpike
- Add shared use path
- Realigns roadway for truck traffic around City of Coleman
- Two added traffic signals: C.R. 525 & Warm Springs Ave

COUNTY
Sumter

PROJECT LIMITS

U.S. 301 from County Road (C.R.) 470 to Florida's Turnpike

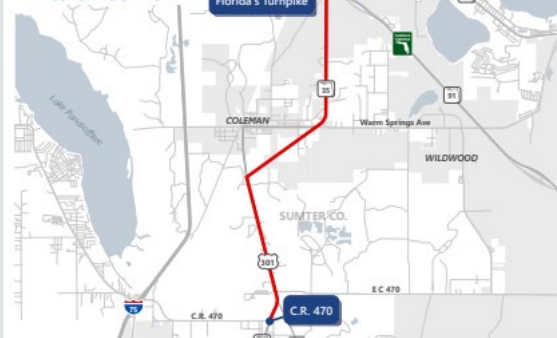
FUNDING

\$60 Million

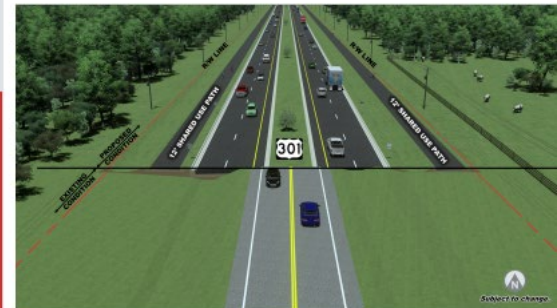
CONSTRUCTION

2025

PROJECT LOCATION



REGIONAL
ECONOMIC IMPACT
**\$255
MILLION**



PROJECT BENEFITS

New signal at C.R. 525 to
**REDUCE
DELAYS BY
83%**
in the AM peak
&
94.5%
in the PM peak

New signal at
Warm Springs Ave to
**REDUCE
DELAYS BY
98%**
in the AM/PM
peak times

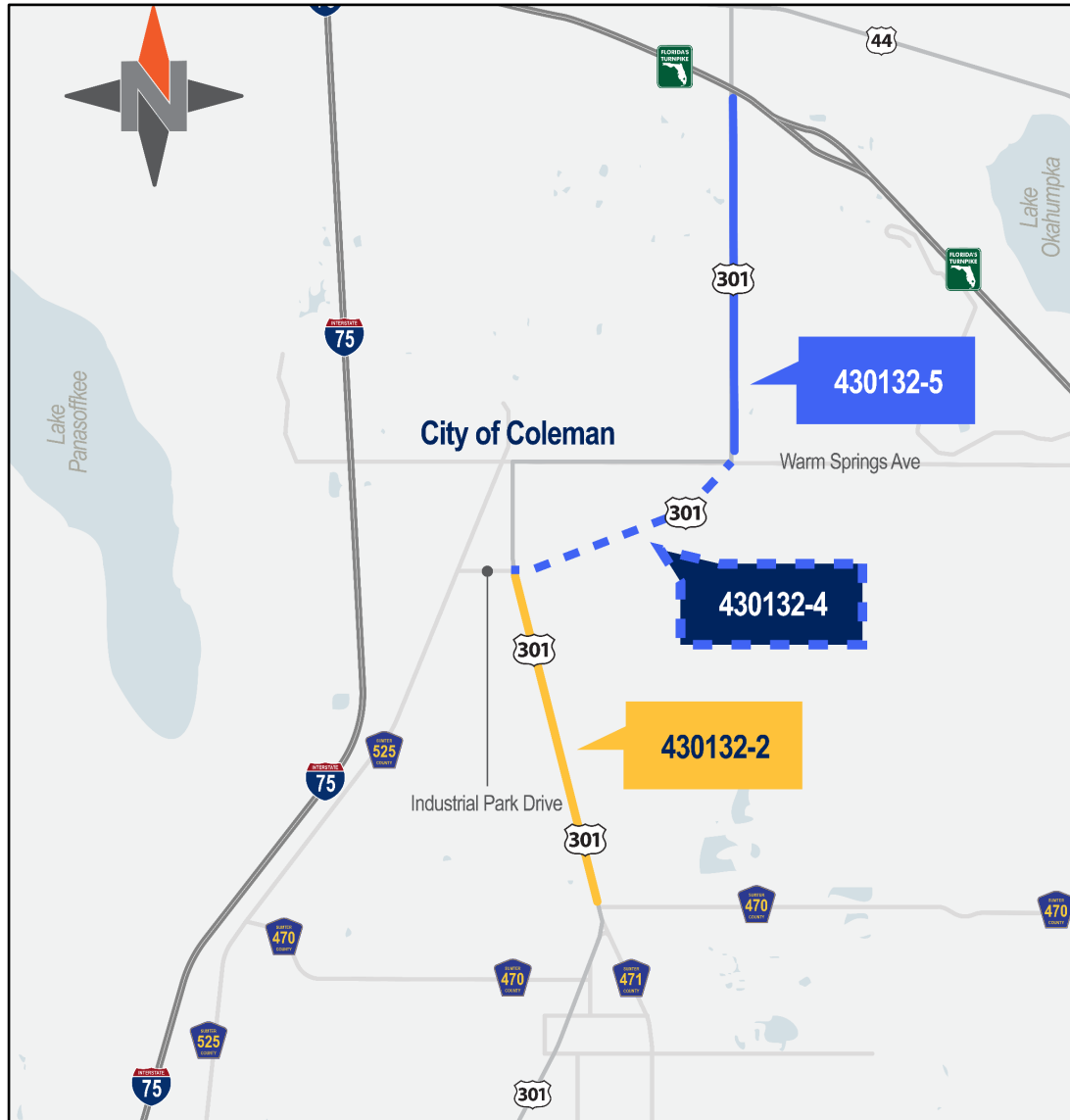
**STREAMLINED
ROUTE**
for trucks benefiting
FL's supply chain



**INCREASED
mobility for the
community downtown**



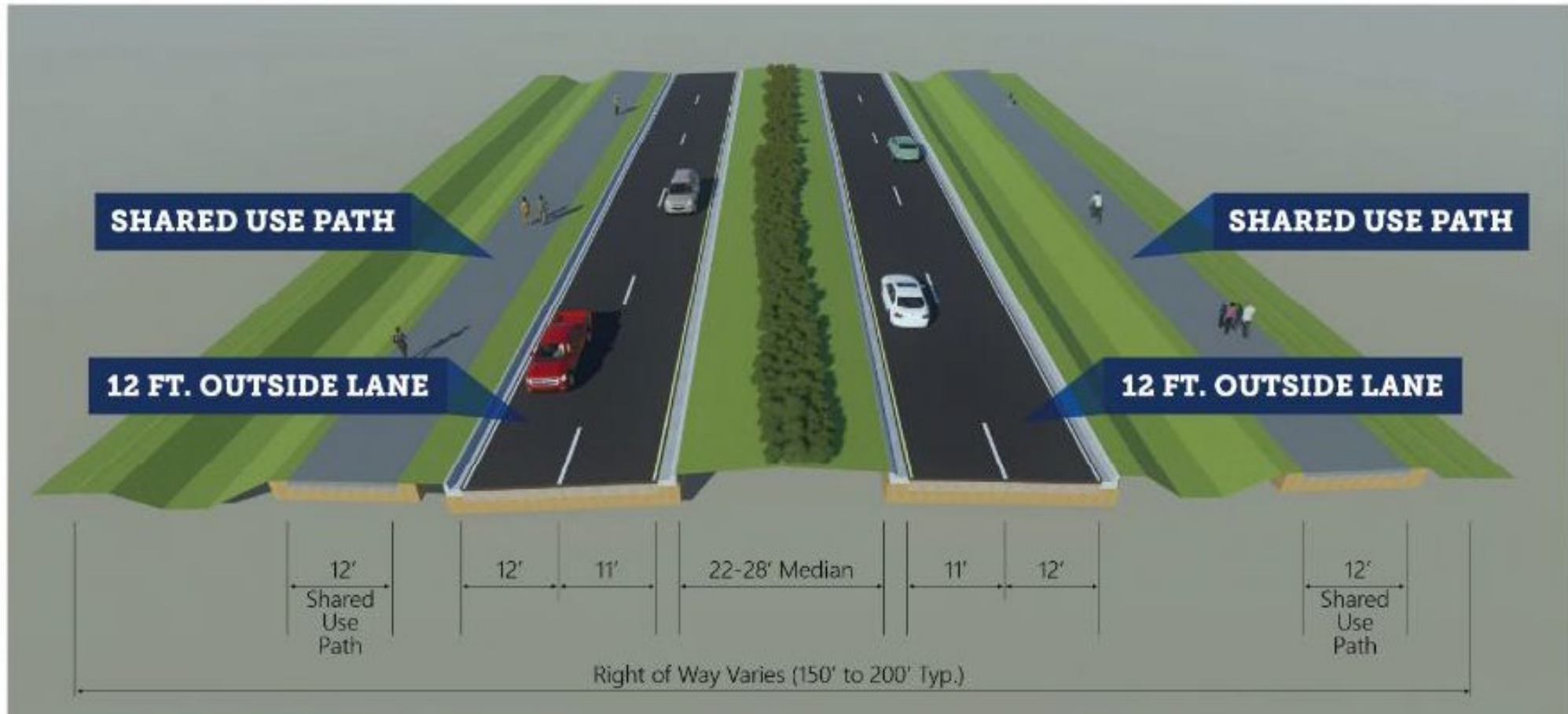
U.S. 301 Widening & Realignment Overview



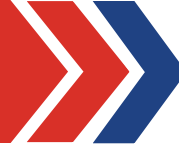
- Overall limits are from County Road (C.R.) 470 to Florida's Turnpike
- Project divided into three segments for construction
 - 430132-2 – C.R. 470 to Industrial Park Drive (C.R. 525E and formerly Coleman Connector)
 - 430132-4 – Industrial Park Drive to south of Warm Springs Avenue (C.R. 468)
 - 430132-5 – Warm Springs Avenue to Florida's Turnpike

Proposed U.S. 301 (S.R. 35) Typical Section

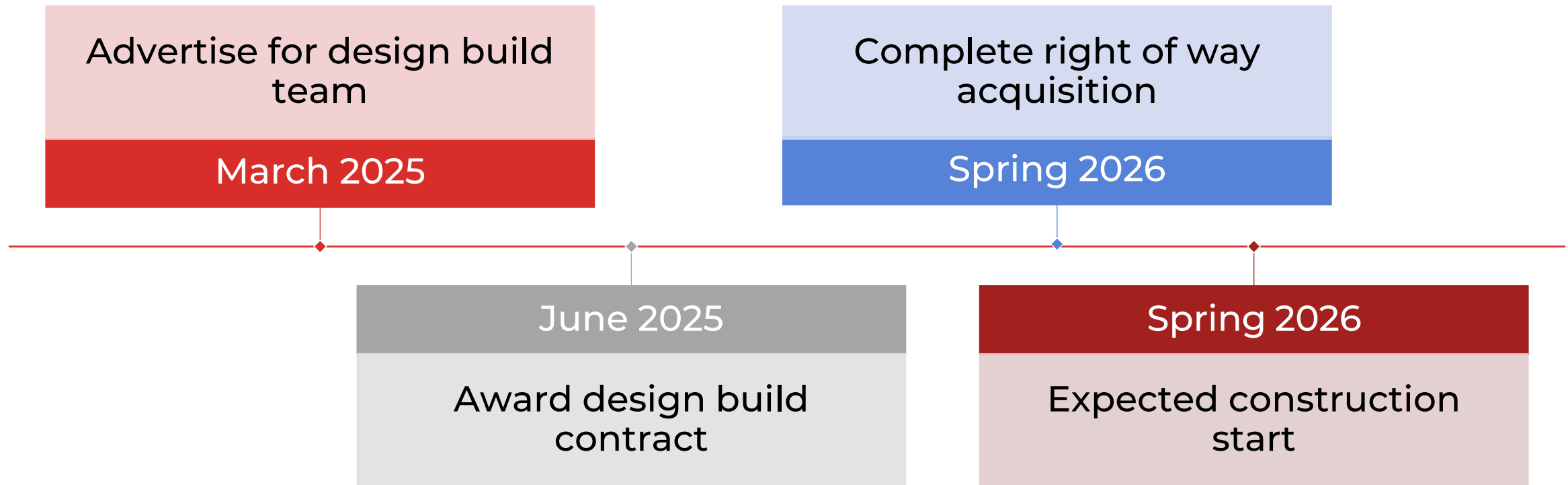
Four Lane Urban Typical (Full Reconstruction)



U.S. 301 Realignment (430132-4)



Estimated Schedule & Costs 430132-4

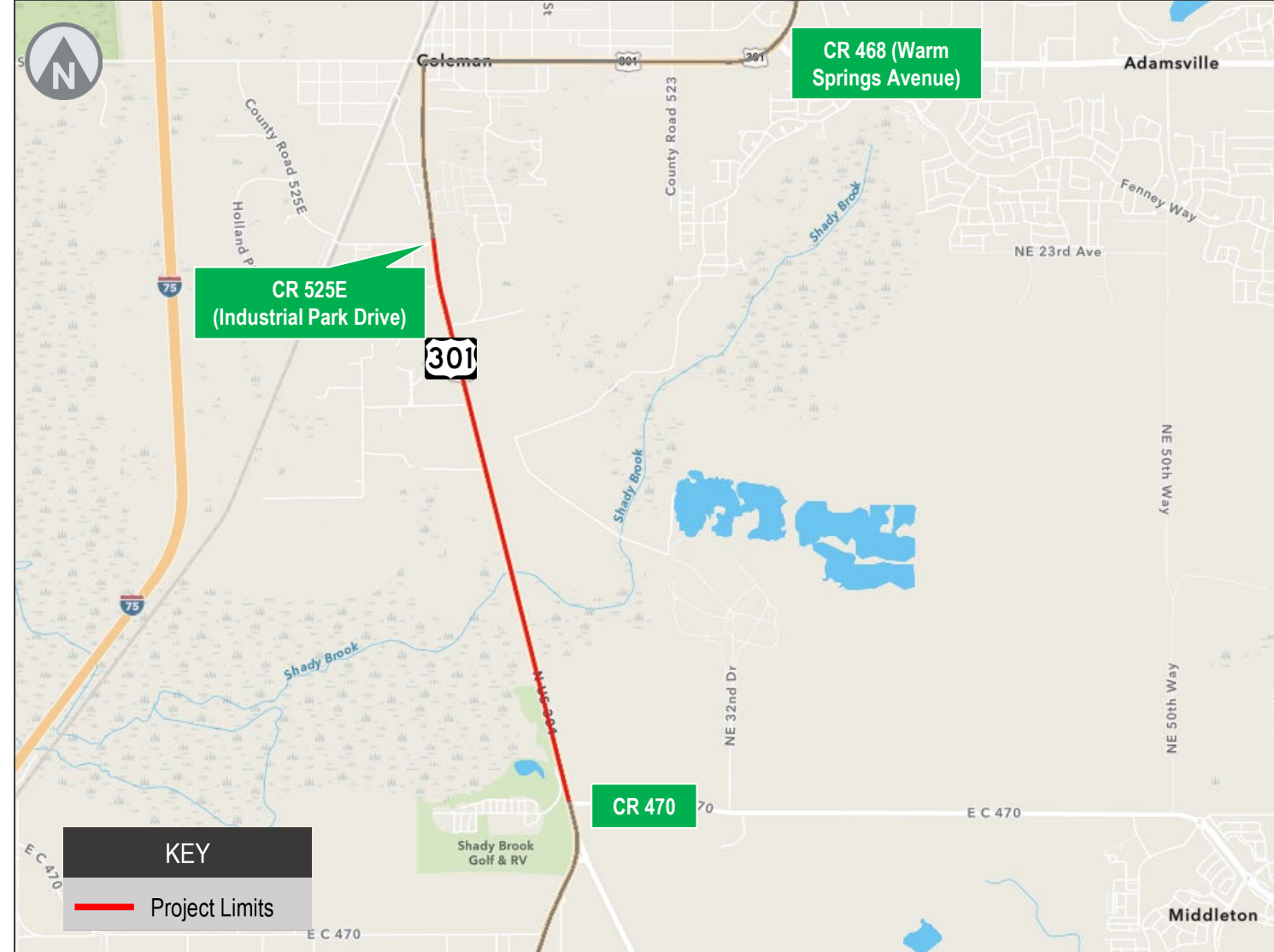


Estimated construction cost for the realignment is about \$40 million

NOTE: New alignment will not open until other segments are built

U.S. 301 Widening – Southern Segment (430132-2)

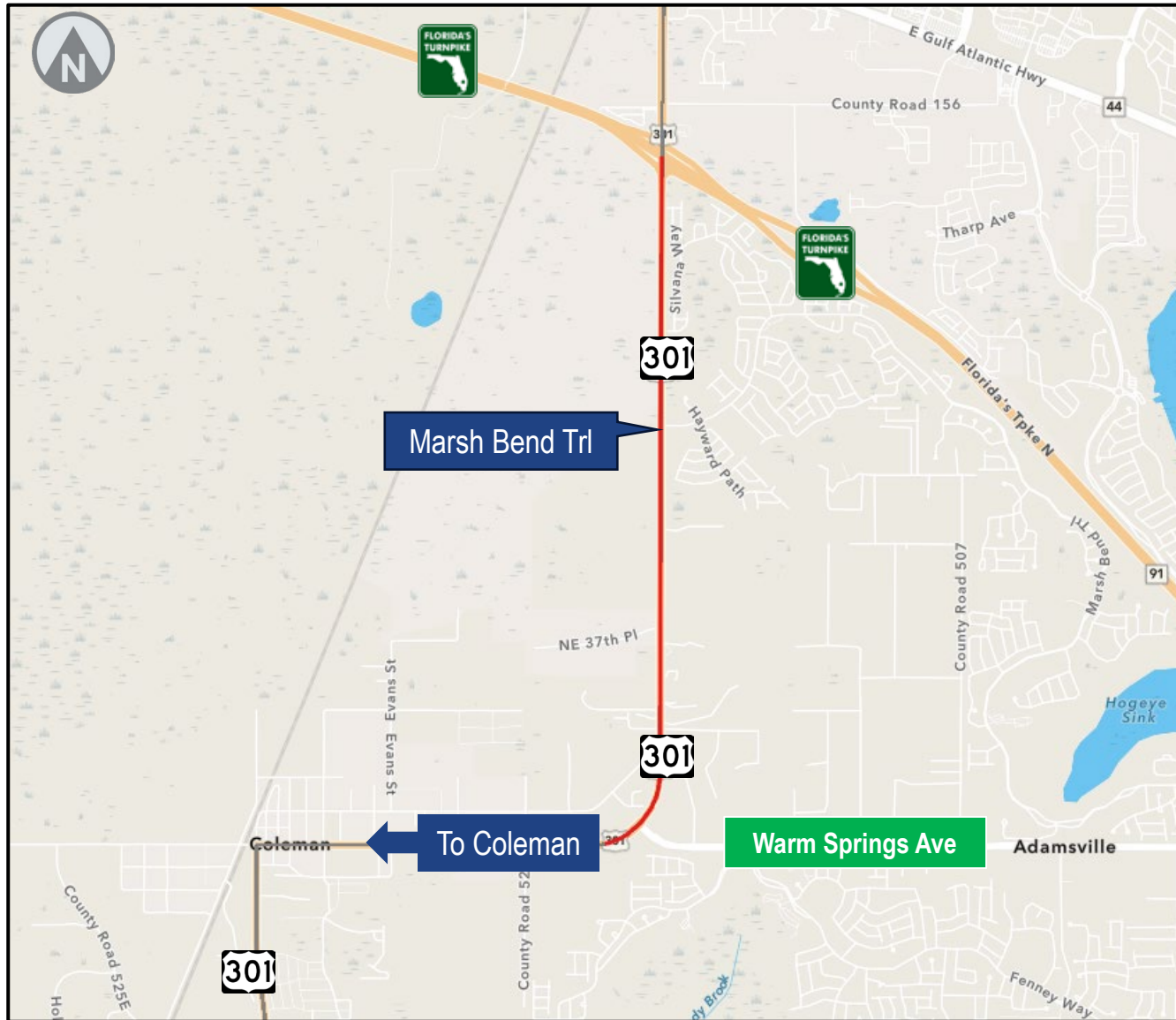
- Advertise for design-build team July 2025
- Award design-build contract fall 2025
- Estimated construction start late 2026
- Estimated construction cost = \$59 million



U.S. 301 Widening - Southern Segment (430132-2)



U.S. 301 Widening – Northern Segment (430132-5)

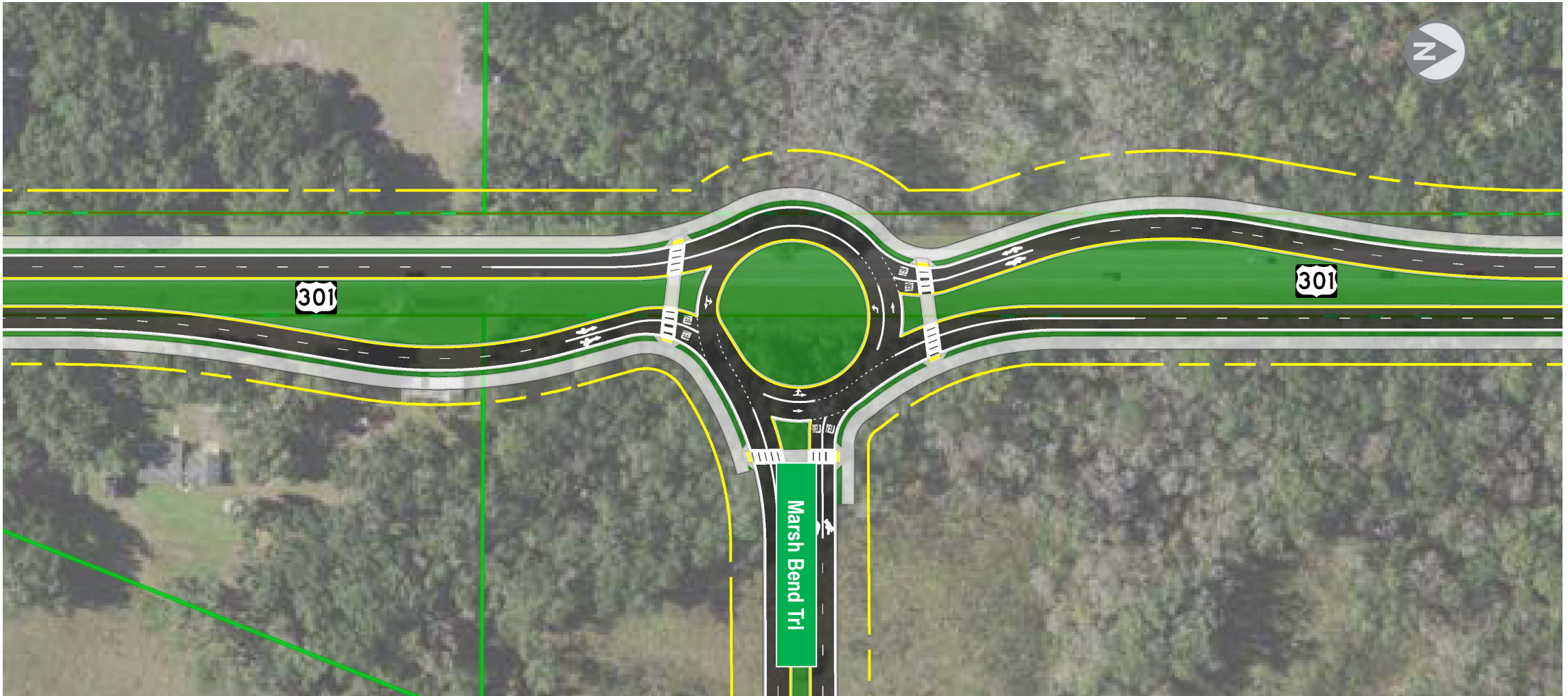


- Complete design late 2026
- Construction expected to start summer 2027
- Estimated construction cost = \$67 million

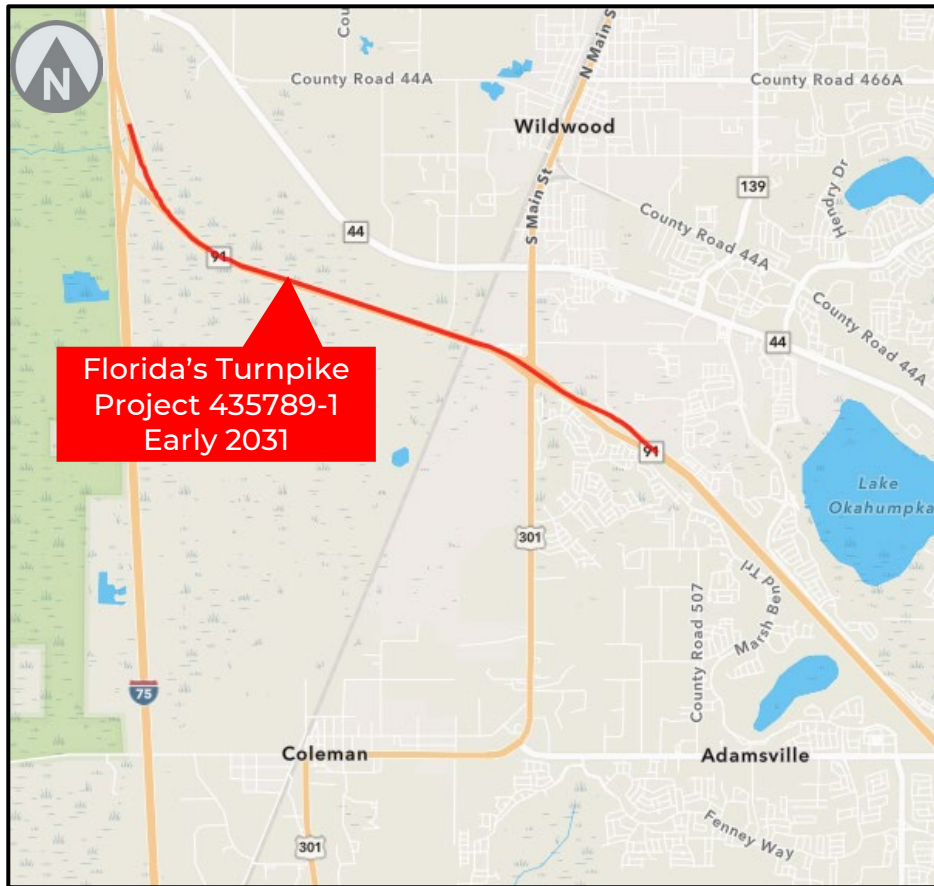
U.S. 301 Realignment (430132-4)



Marsh Bend Trail Roundabout (430132-5)



Turnpike Interchange Improvements



Turnpike Interchange Improvements



Contact the Project Manager



Derek.Dean@dot.state.fl.us

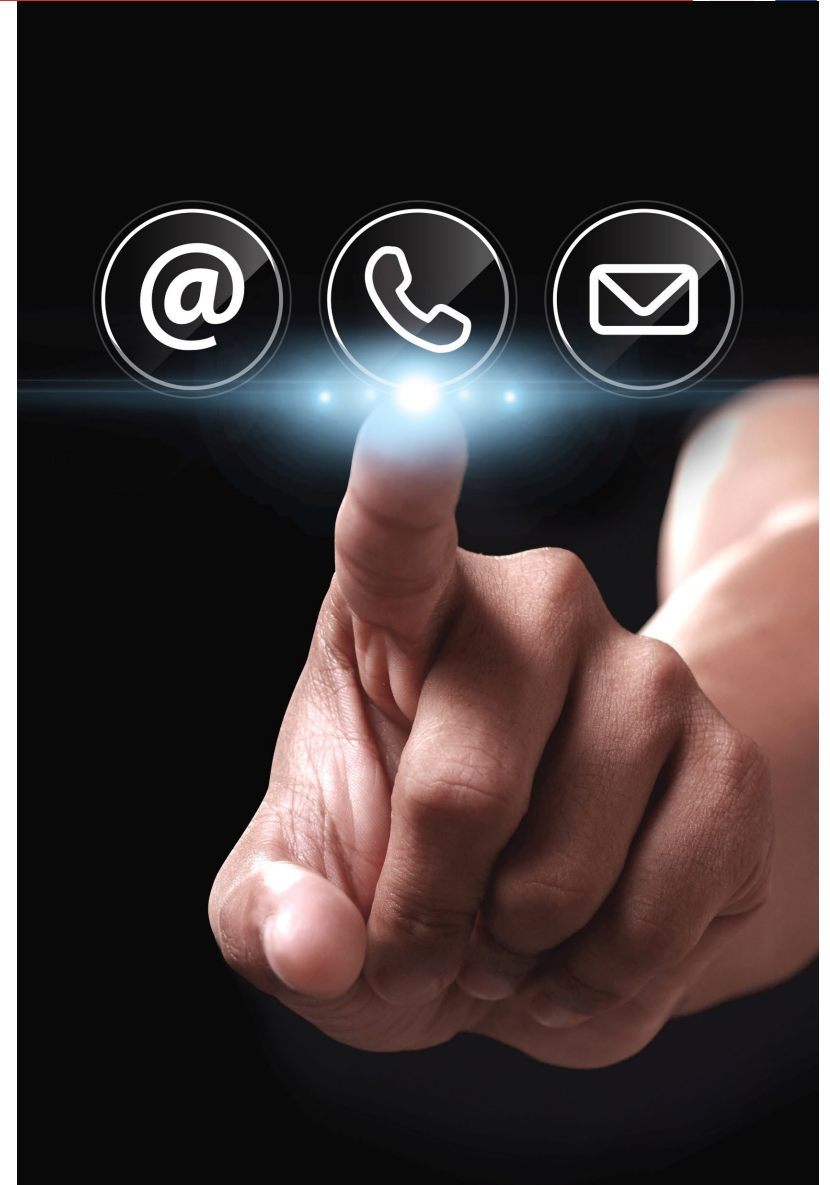


719 S. Woodland Blvd., MS 542
DeLand, FL 32720



386-943-5161

www.CFLRoads.com





Thank you!

