

SR 471

COMPLETE STREETS STUDY

April 27, 2022



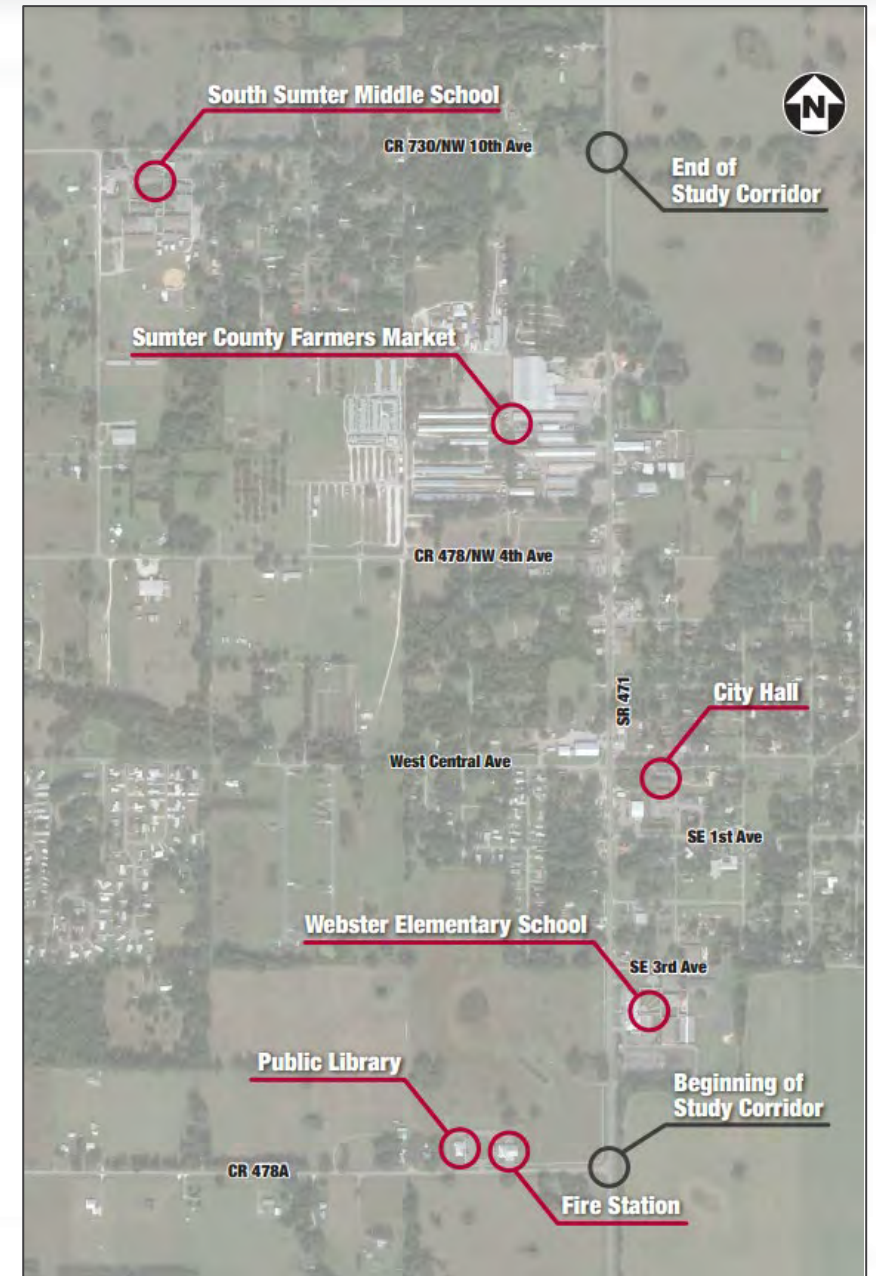
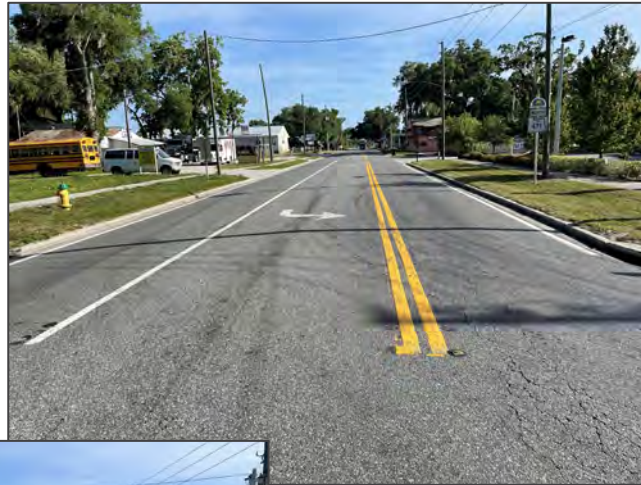
Agenda

- Project Objectives & Areas of Focus
- Public Involvement
- Field Observations
- Existing Conditions
- Future Programmed Conditions
- Needs Assessment
- Improvement Options



Project Corridor

- SR 471 from CR 478A to CR 730



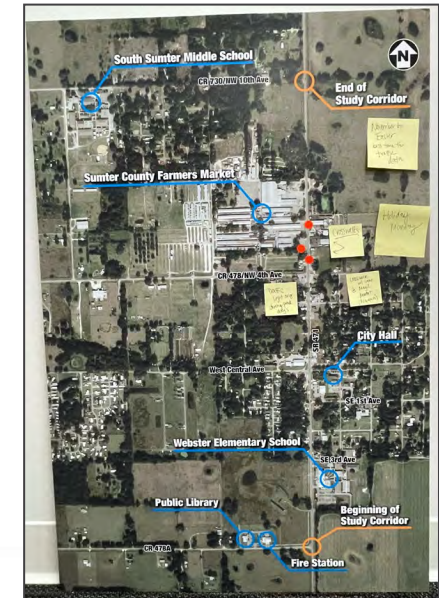
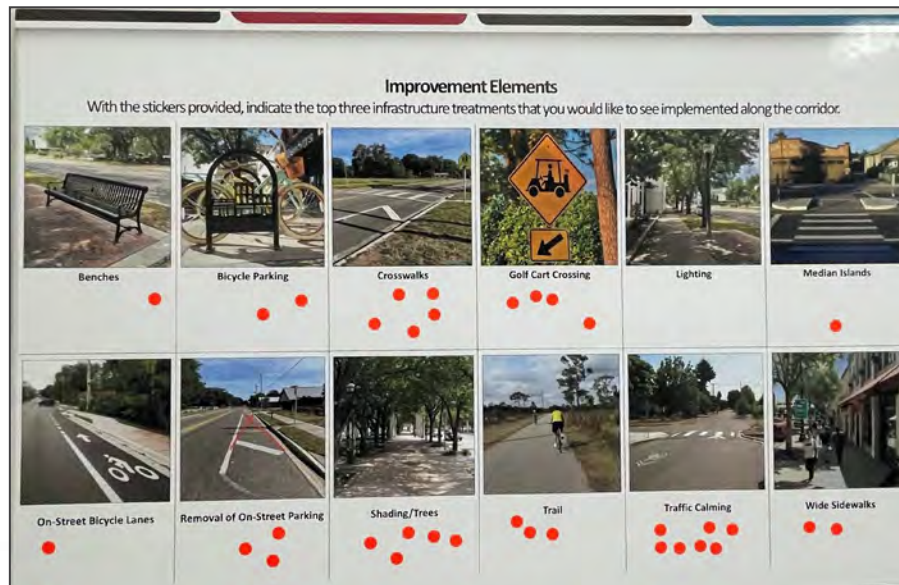
Project Objectives & Areas of Focus

- Objective: Assess the feasibility of and develop concepts for improved multimodal safety and mobility along the corridor.
- Areas of Focus:
 - Existing and future traffic patterns
 - Speeding traffic
 - Bicycle/pedestrian modes
 - Crosswalks
 - On-street parking
 - Beautification



Public Involvement

- Community Workshop – June 9, 2021
- Online Survey
- Scenic Sumter Heritage Byway Meeting – June 15, 2021



Field Observations



- Typical Section
 - Two 12-foot lanes
 - 5-foot sidewalks set back from curb in most areas
 - On-street parking in most areas



- Significant truck traffic
- No vehicles in on-street parking
- Pedestrian and bicycle use higher on Market Monday



Field Observations



- Patrons of the Farmers Market cross at unmarked locations



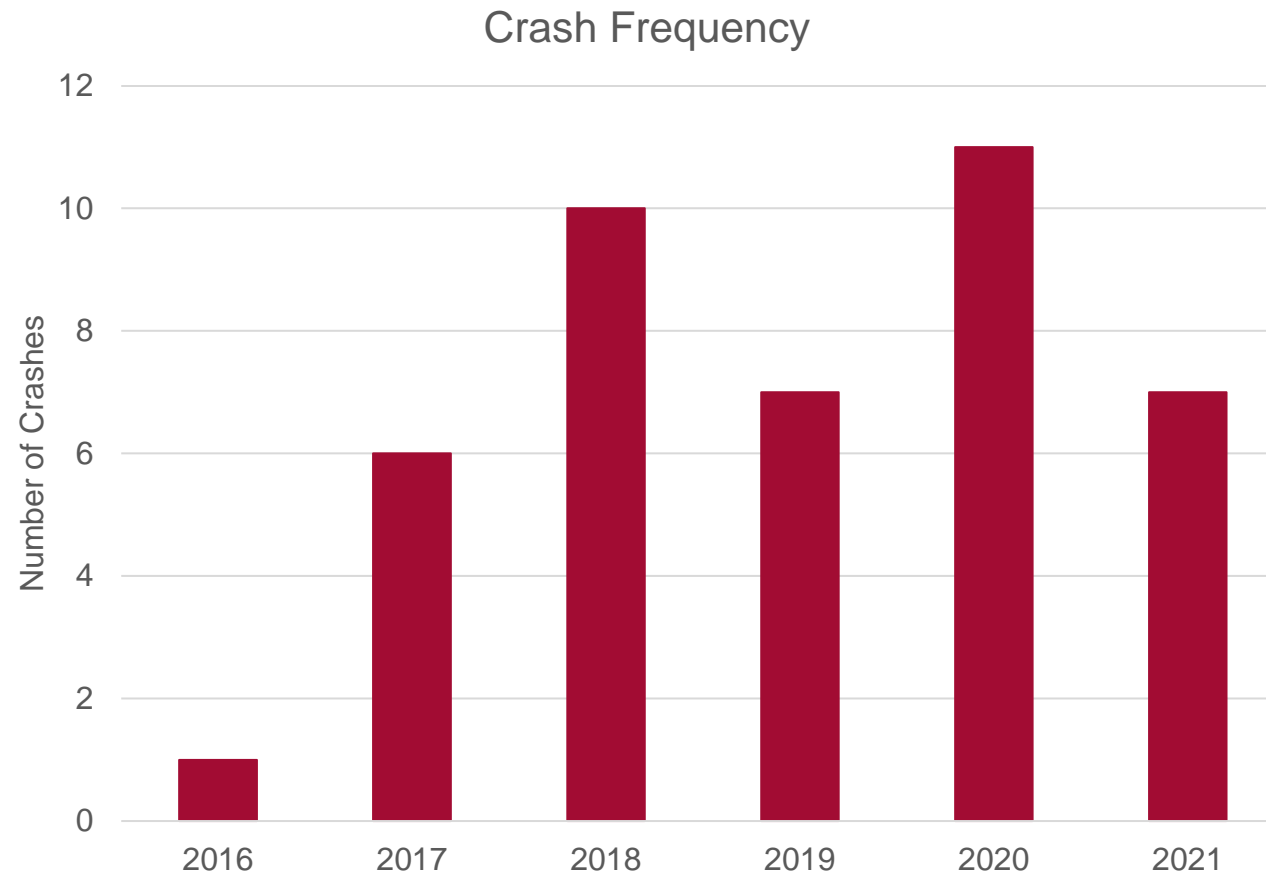
- Multiple school bus stops along the corridor



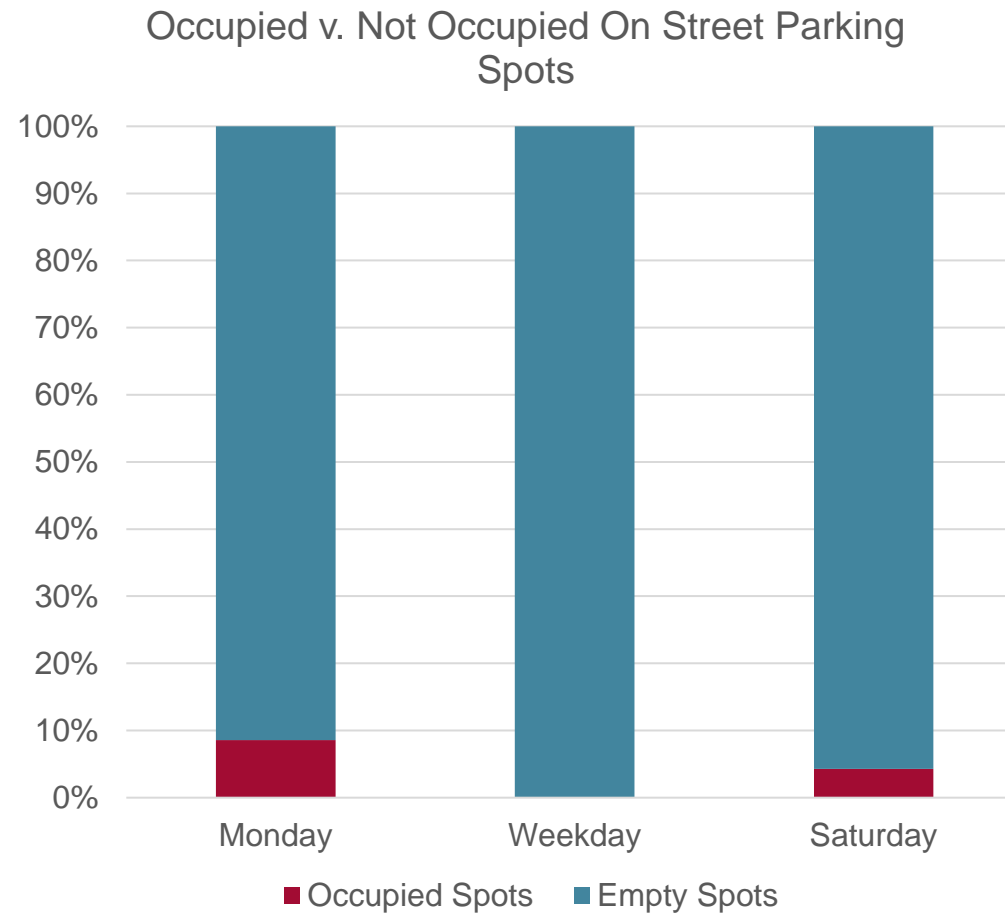
- Larger concentration of pedestrians near Webster Elementary
- Only crosswalk across corridor is at school
- No in-street signage typical of mid-block crosswalk



Existing Conditions – Crash Analysis

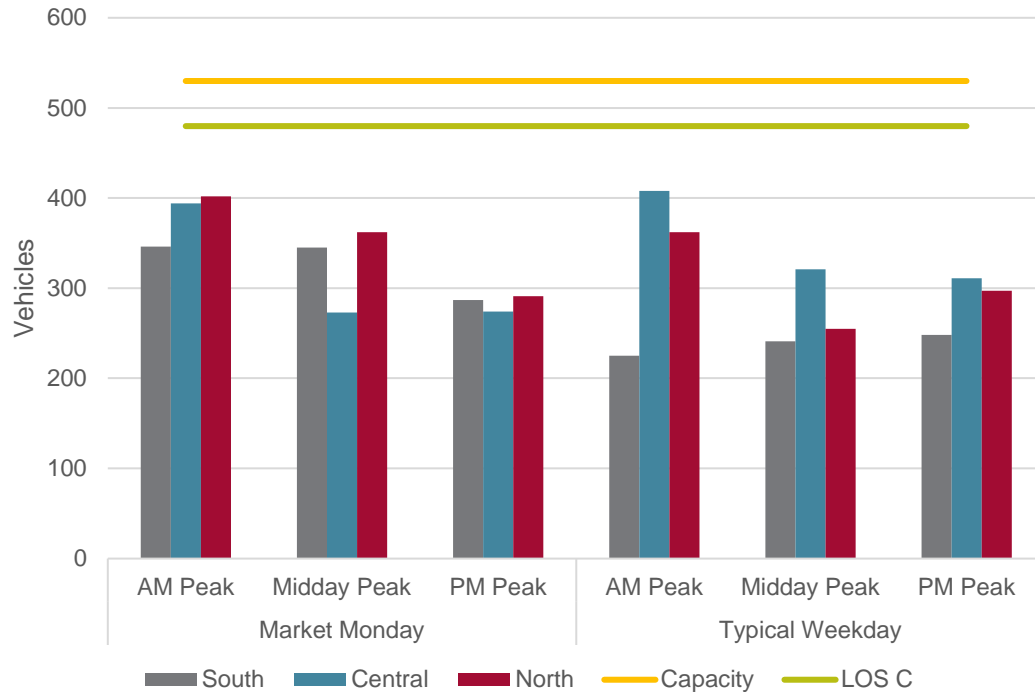


Existing Conditions – On-Street Parking

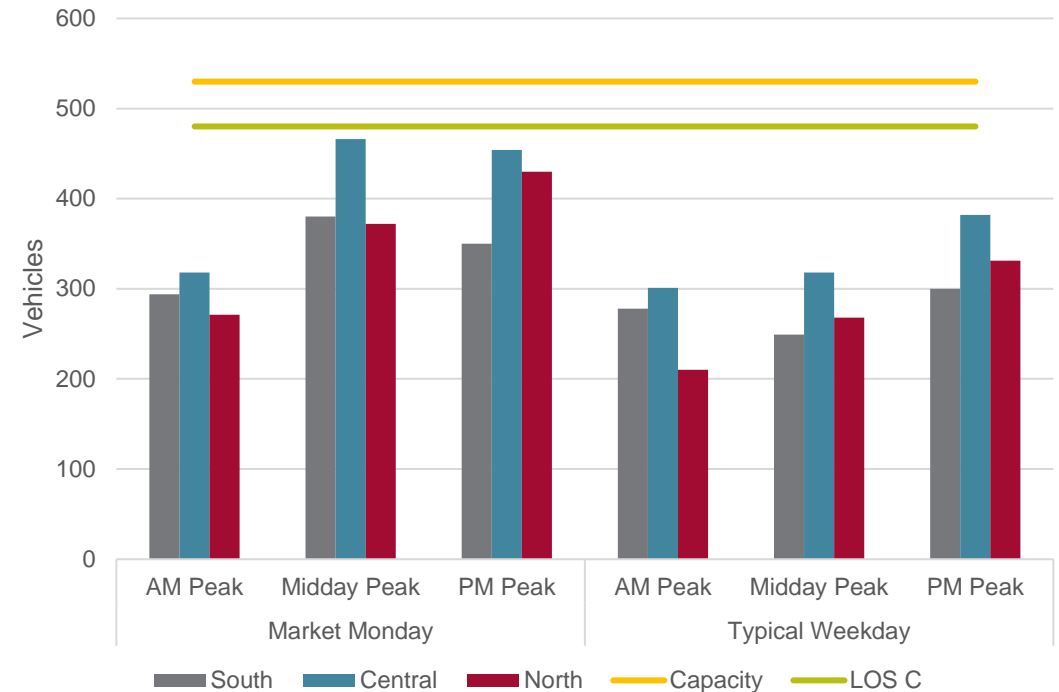


Existing Conditions – Volumes and Traffic Composition

Volume Comparison (Northbound)



Volume Comparison (Southbound)

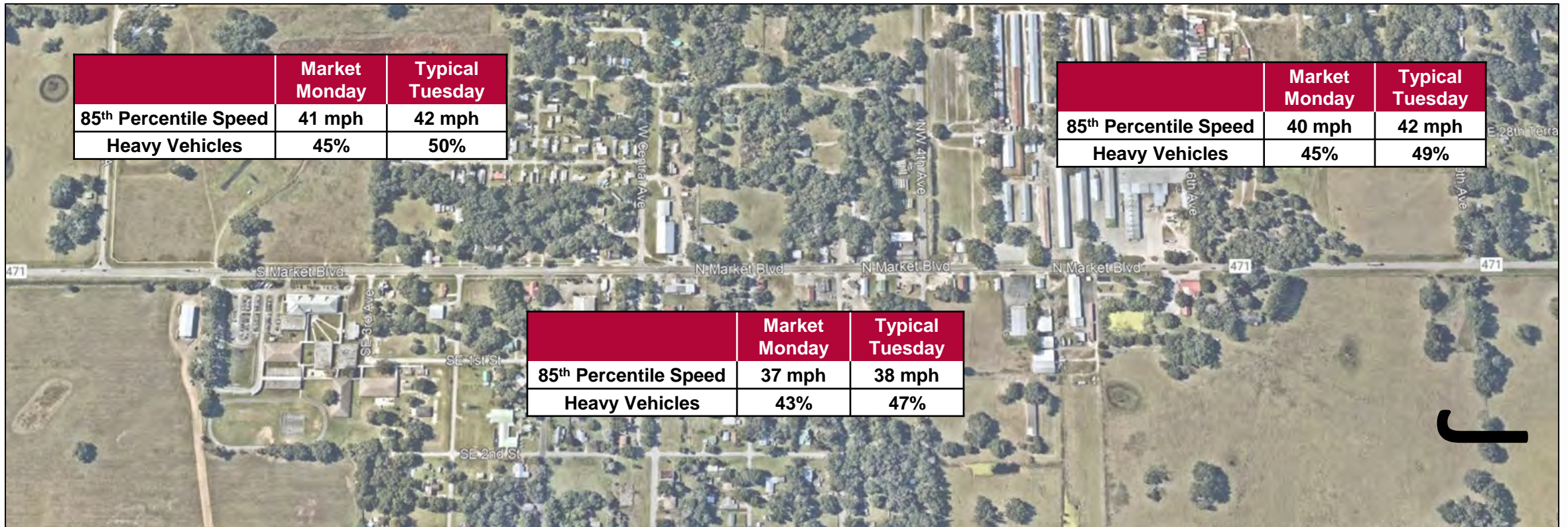


Maximum Corridor v/c Ratios		
	Market Monday	Typical Weekday
Northbound	0.76	0.77
Southbound	0.88	0.72

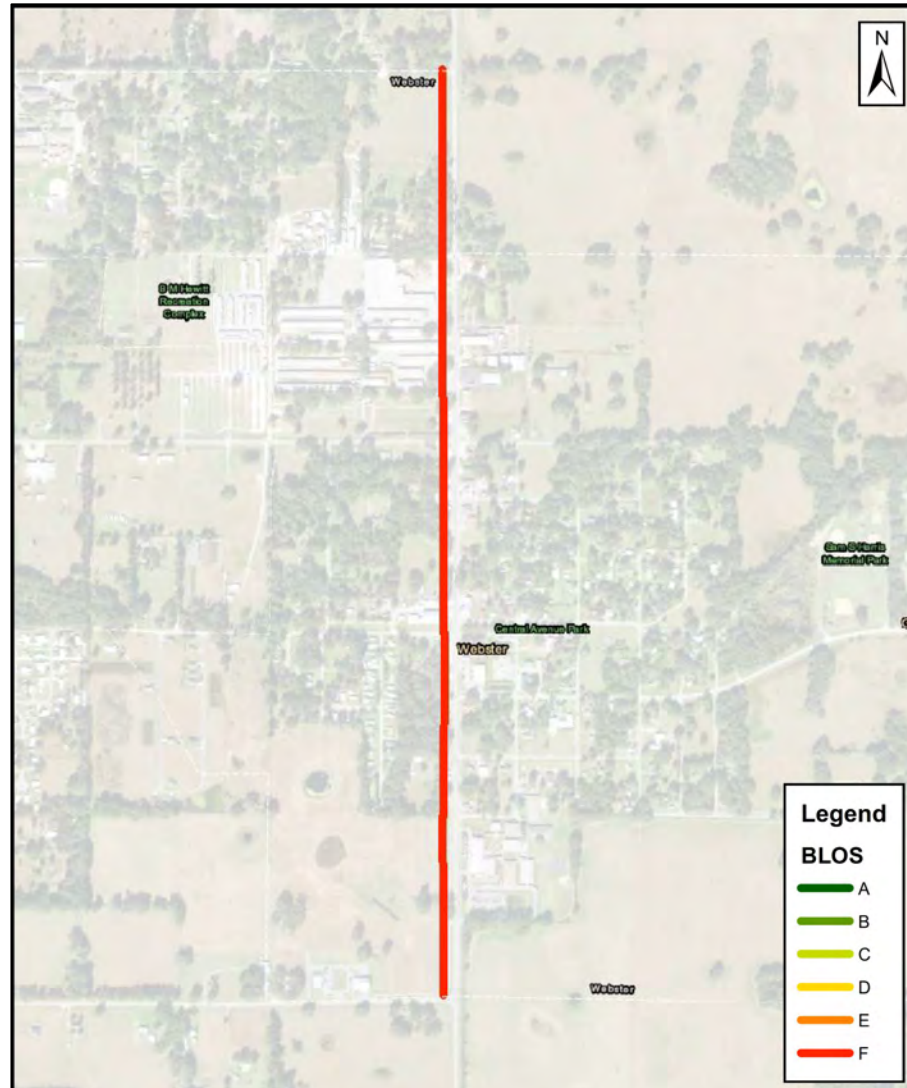
Roadway Capacity: 530 vehicles/hour in one direction
Based on FDOT *Quality/Level of Service Handbook*



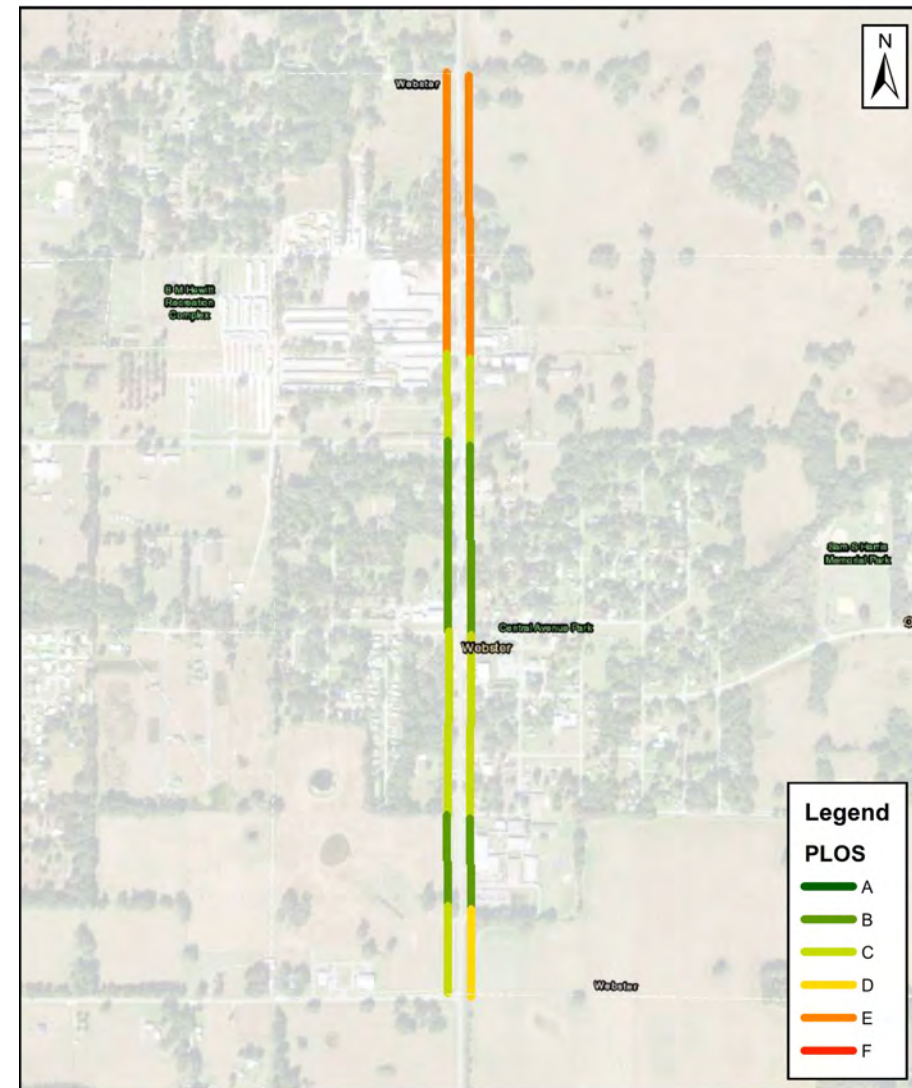
Existing Conditions – Speed & Traffic Composition



Existing Conditions – BLOS & PLOS



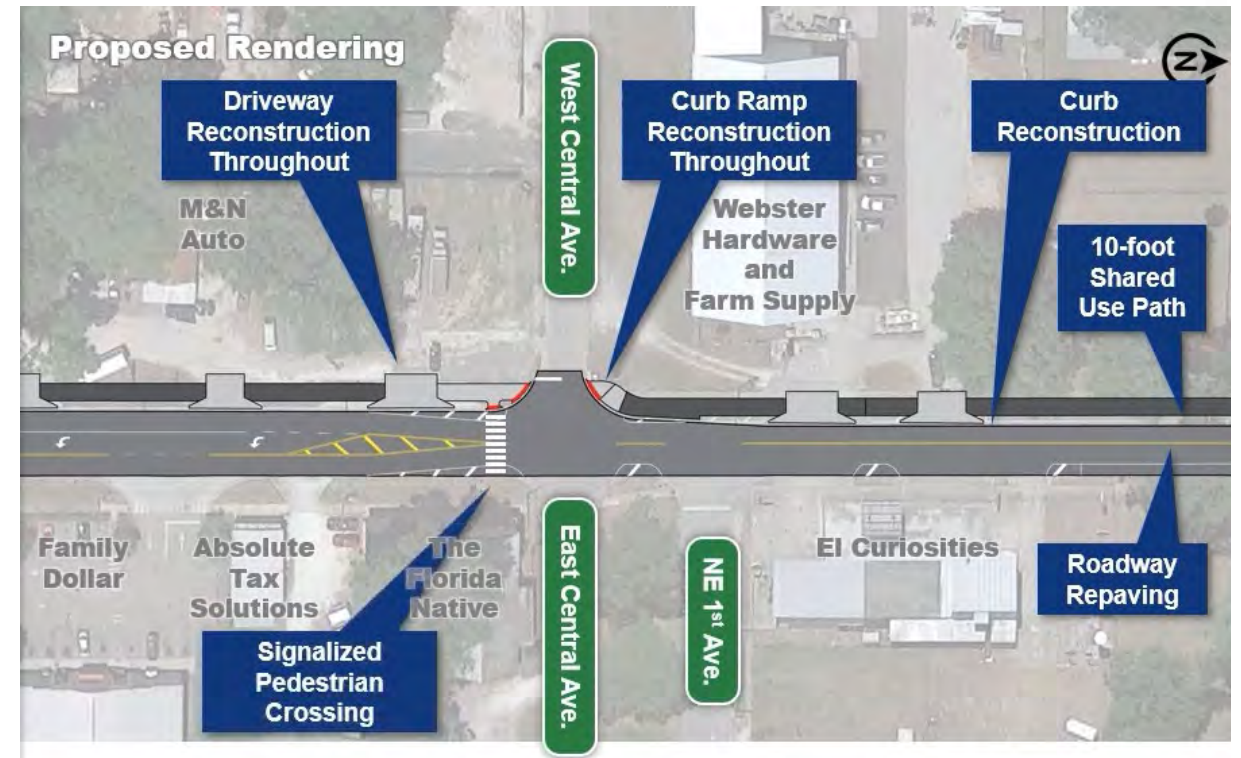
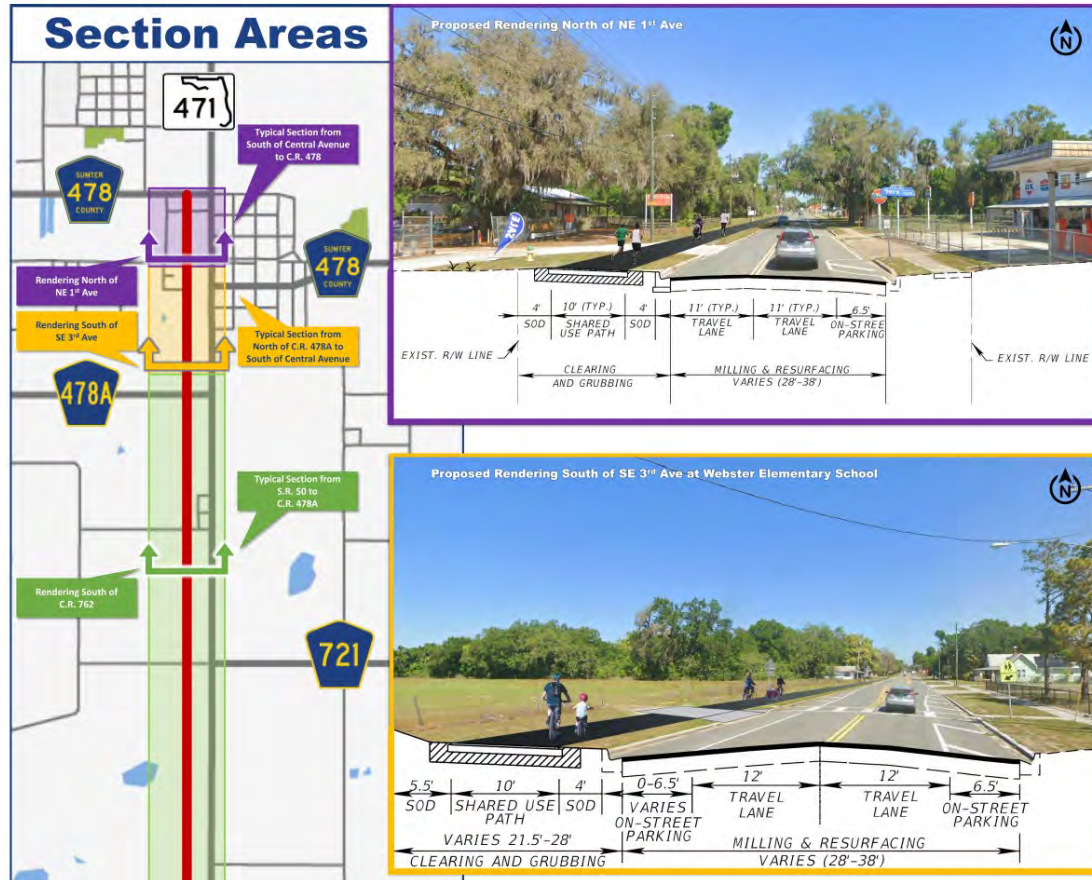
Bicycle Level of Service



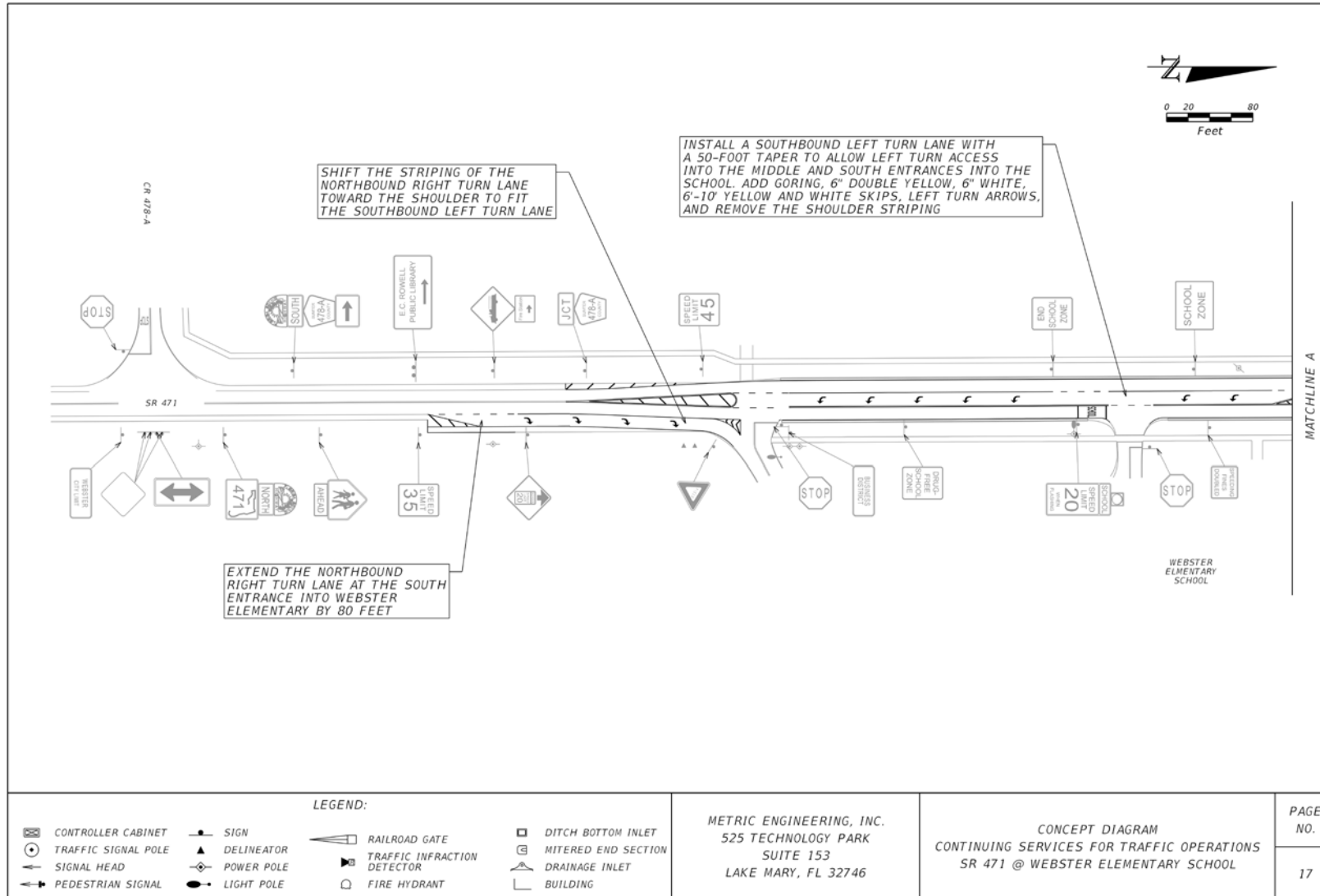
Pedestrian Level of Service



Future Programmed Conditions – South Sumter Trail

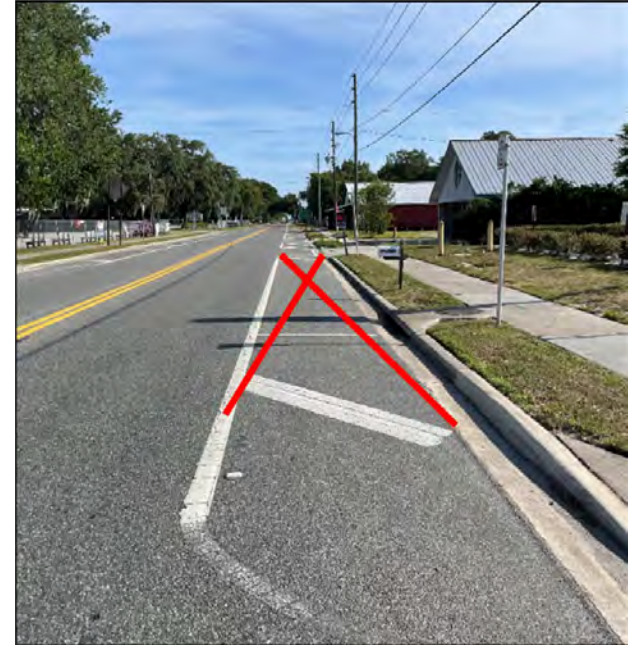


Future Programmed Conditions – Webster Elementary School Study



Needs Assessment

- Removal of On-Street Parking
- Bicycle and Pedestrian Facilities
 - Segment North of 478
 - East side of corridor
- Traffic Calming
- Crosswalks with bulb outs
- Rectangular Rapid Flashing Beacons (RRFB)
- Lighting
- Golf Cart Crossings
- Landscaping/Shade Trees



Rectangular Rapid Flashing Beacon (RRFB)



Improvement Options – CR 478A to SE 3rd Avenue

Existing



Option 1



Option 2



10' Shared Use Path from South Sumter Trail Project

Turn lane improvements from Webster Elementary Project

Median Refuge and RRFB at Existing Crosswalk

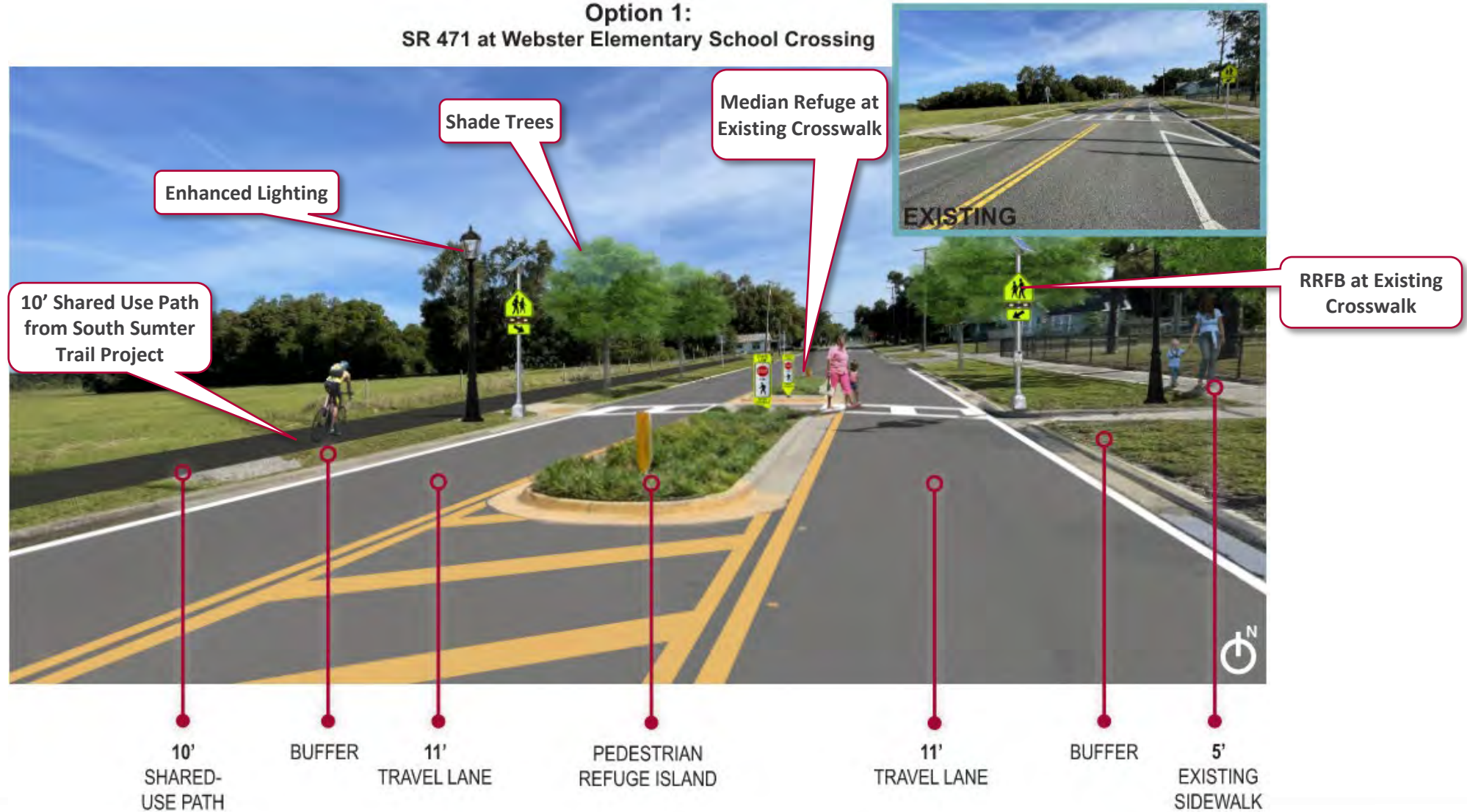
Moved curb line for narrower roadway section

Wider 6' sidewalk



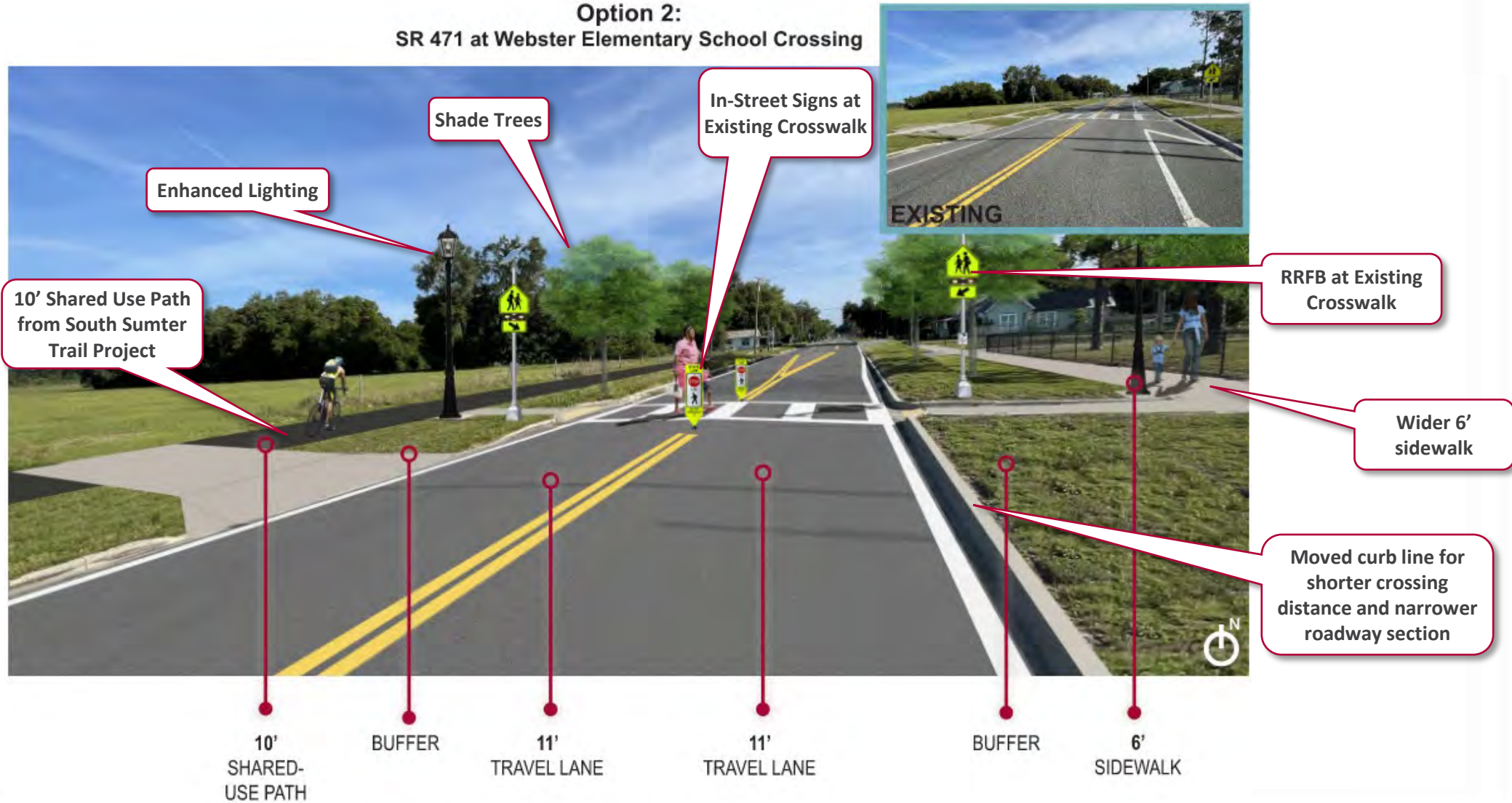
Improvement Options – CR 478A to SE 3rd Avenue

Option 1:
SR 471 at Webster Elementary School Crossing



Improvement Options – CR 478A to SE 3rd Avenue

Option 2:
SR 471 at Webster Elementary School Crossing



Improvement Options – SE 3rd Avenue to Central Avenue

Existing



10' Shared Use Path from South Sumter Trail Project

Crosswalk and RRFB from South Sumter Trail Project

Option 1



Golf Cart Crossing across SR 471

Moved curb line for narrower roadway section

Option 2



Wider 6' sidewalk



Improvement Options – SE 3rd Avenue to Central Avenue

Option 2:
SR 471 at Central Avenue



10'
SHARED-USE
PATH

BUFFER

11'
TRAVEL LANE

11'
TRAVEL LANE

BUFFER

6'
SIDEWALK



Improvement Options – Central Avenue to CR 478/N 4th Avenue

Existing



10' Shared Use Path from South Sumter Trail Project

RRFB and In-Street Signs at New Crosswalk Location

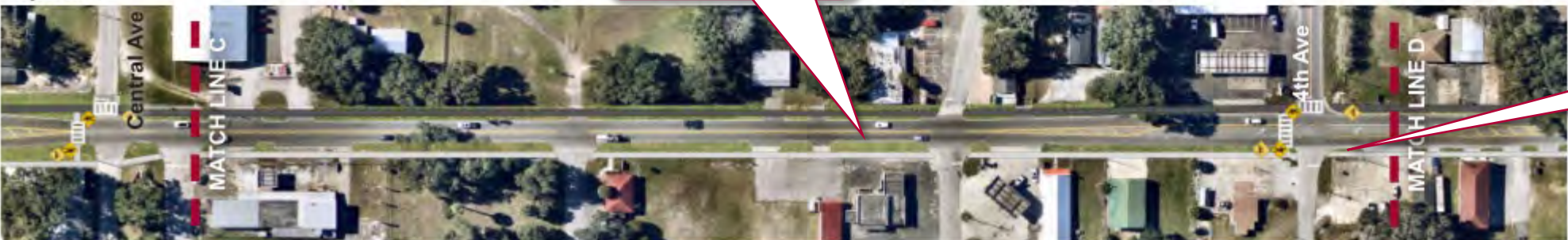
Option 1



Golf Cart Crossing across SR 471

Moved curb line for narrower roadway section

Option 2



Wider 6' sidewalk



Improvement Options – Central Avenue to CR 478/N 4th Avenue

Option 1:
SR 471 at N 4th Avenue/CR 478



10' Shared Use Path from South Sumter Trail Project

- 10' SHARED-USE PATH
- 11' TRAVEL LANE
- 11' TURN LANE
- 11' TRAVEL LANE
- BULB-OUT/CURB EXTENSION
- 5' EXISTING SIDEWALK



Improvement Options – Central Avenue to CR 478/N 4th Avenue

Option 2:
SR 471 at N 4th Avenue/CR 478



Improvement Options – CR 478/N 4th Avenue to N 6th Avenue

Existing



Extension of 10' Shared Use Path

RRFB and In-Street Signs at New Crosswalk Location

Option 1



Moved curb line for narrower roadway section

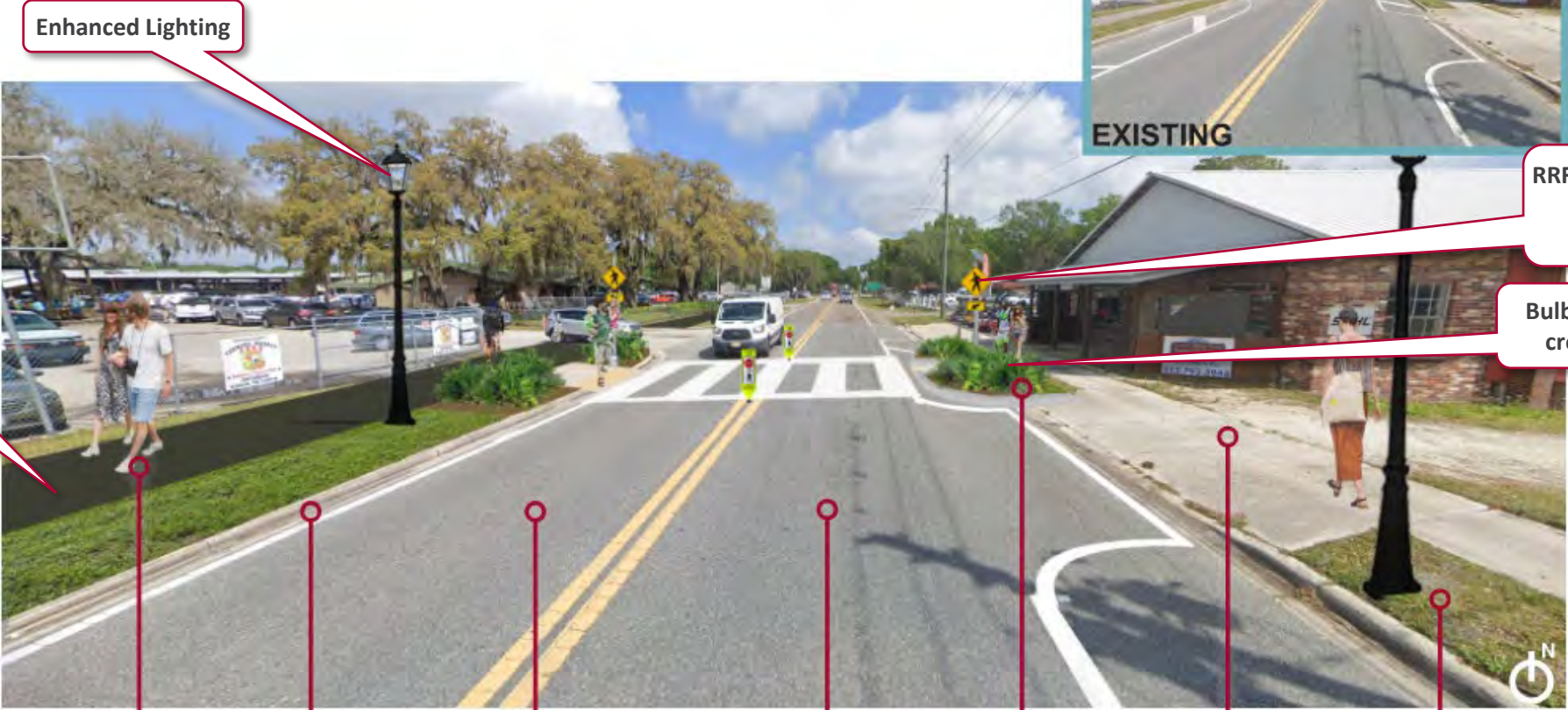
Wider 6' sidewalk

Option 2



Improvement Options – CR 478/N 4th Avenue to N 6th Avenue

**Option 1:
SR 471 at Farmers Market Entrance**



Enhanced Lighting

Extension of 10' Shared Use Path

RRFB and In-Street Signs at New Crosswalk Location

Bulb outs for shorter crossing distance



10'
SHARED-USE
PATH

BUFFER

11'
TRAVEL LANE

11'
TRAVEL LANE

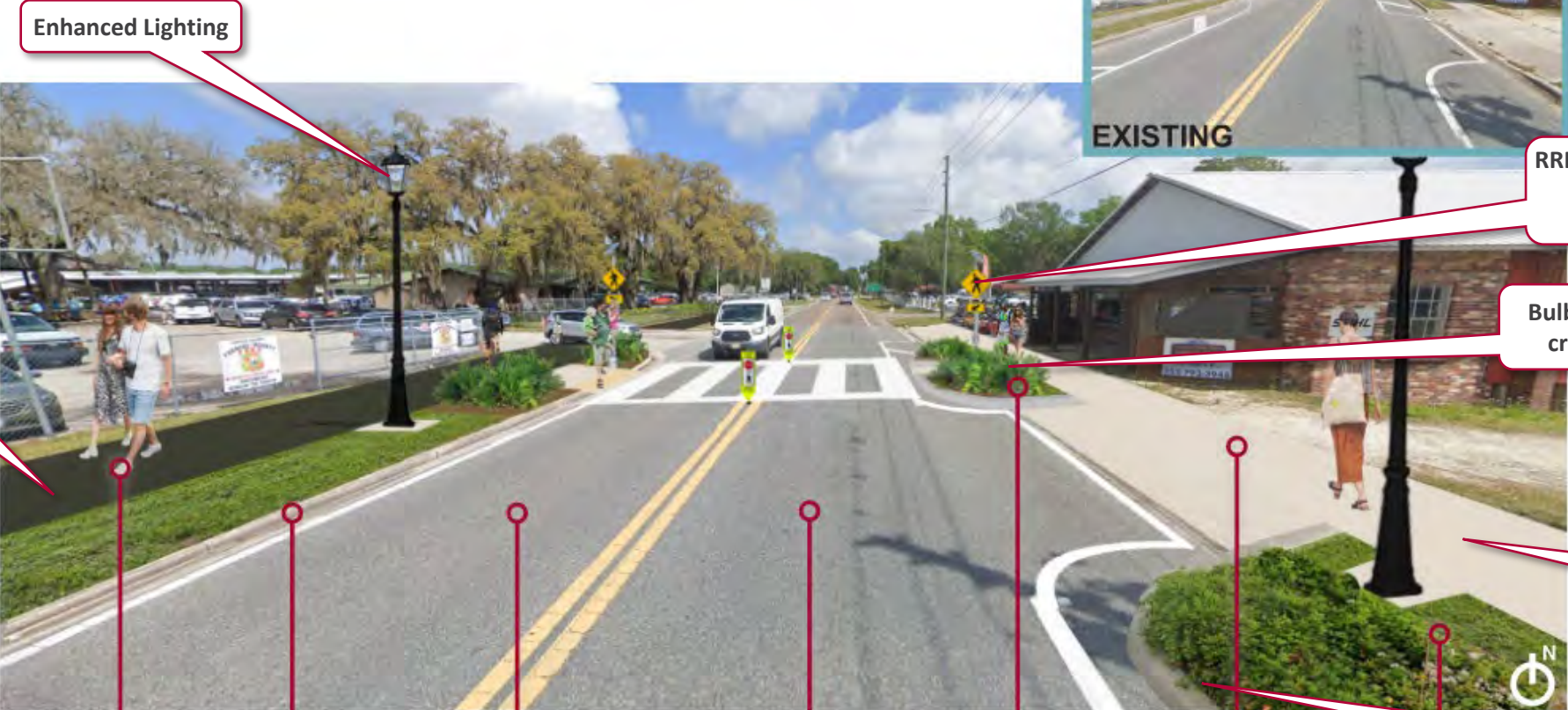
BULB-OUTS/CURB
EXTENSIONS

5'
EXISTING
SIDEWALK

BUFFER
VARIES

Improvement Options – CR 478/N 4th Avenue to N 6th Avenue

**Option 2:
SR 471 at Farmers Market Entrance**



Enhanced Lighting

Extension of 10' Shared Use Path

RRFB and In-Street Signs at New Crosswalk Location

Bulb outs for shorter crossing distance

Wider 6' sidewalk

Moved curb line for narrower roadway section

10'
SHARED-USE
PATH

BUFFER

11'
TRAVEL LANE

11'
TRAVEL LANE

BULB-OUTS/CURB
EXTENSIONS

6'
SIDEWALK

BULB-OUTS/CURB
EXTENSIONS



Improvement Options – CR 478/N 4th Avenue to N 6th Avenue

Options 1 & 2:
SR 471: Northern Flush Shoulder Section
(Near Farmers Market)



Extension of 10'
Shared Use Path



10'
SHARED-USE
PATH

BUFFER

4'
PAVED
SHOULDER

11'
TRAVEL LANE

11'
TRAVEL LANE

4'
PAVED
SHOULDER

REMAINING
RIGHT-OF-WAY
TO REMAIN

Improvement Options – N 6th Avenue to N 10th Avenue

Existing



Option 1



Extension of 10' Shared Use Path

Option 2



Improvement Options - Summary

- Option 1
 - Includes programmed improvements from South Sumter Trail and Webster Elementary School Study
 - Extends 10' shared use path from CR 478/N 4th Avenue to CR 730/N 10th Avenue
 - Adds crosswalks with bulb outs and RRFB at 2 additional locations
 - Removes on-street parking where necessary to implement improvements above
 - Includes 2 golf cart crossing locations
 - Includes lighting and landscaping enhancements
- Option 2
 - Builds on Option 1
 - Removes all on-street parking for narrower roadway section
 - Provides wider separation from roadway to sidewalk on east side of corridor
 - Includes wider 6' sidewalk on east side of corridor





SR 471

COMPLETE STREETS STUDY

