
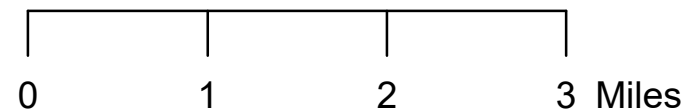
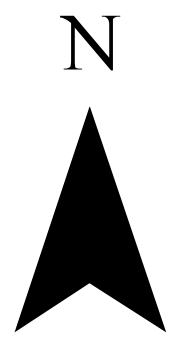


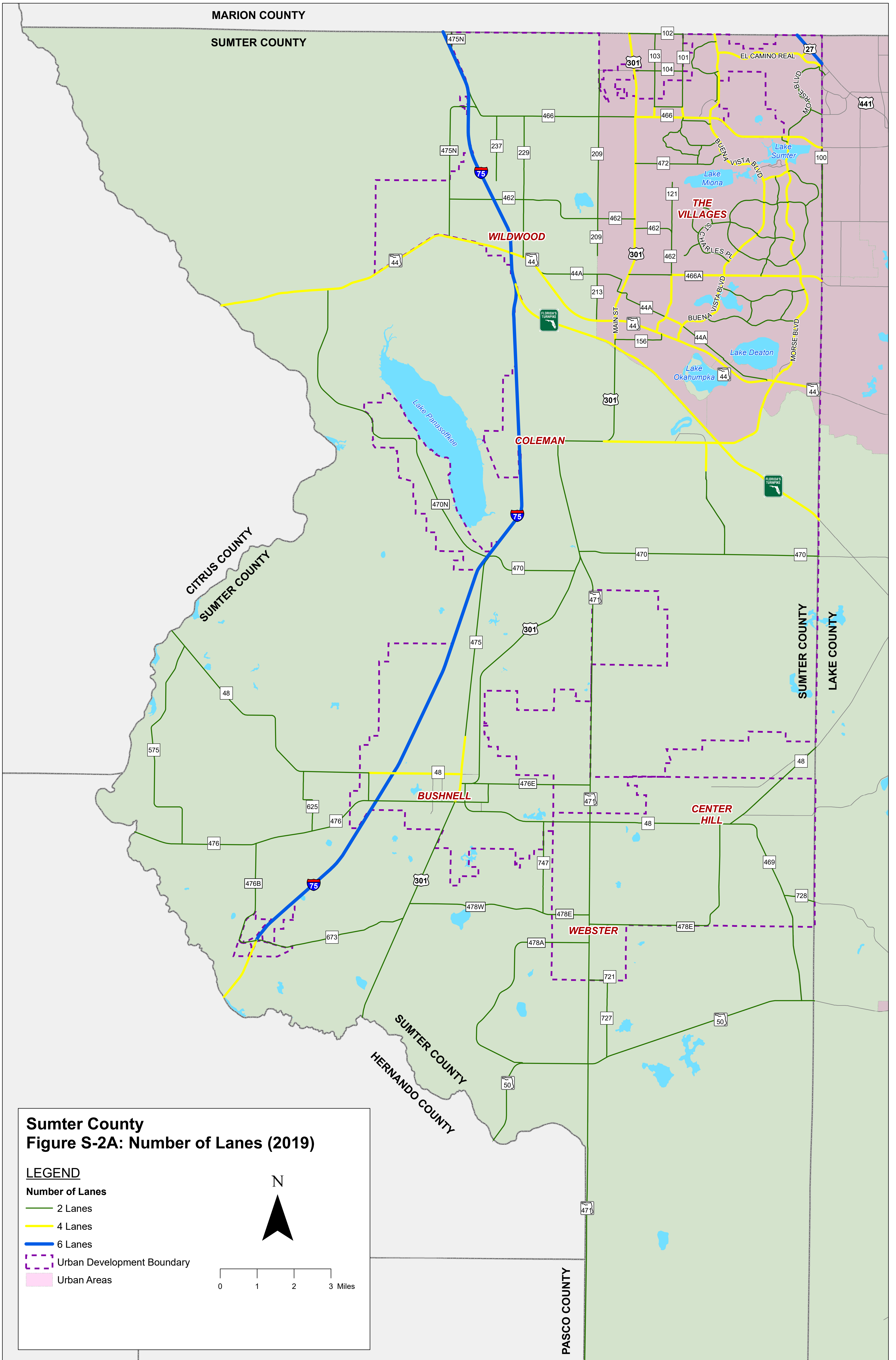
Sumter County
Figure S-1: CMP Network

LEGEND

National Highway System

-  NHS Interstate
-  NHS Non-Interstate
-  Other CMP Network Roadways
-  Strategic Intermodal System (SIS) Roads
-  Urban Development Boundary
-  Urban Areas





MARION COUNTY

SUMTER COUNTY

CITRUS COUNTY
SUMTER COUNTY

SUMTER COUNTY
HERNANDO COUNTY

SUMTER COUNTY
LAKE COUNTY

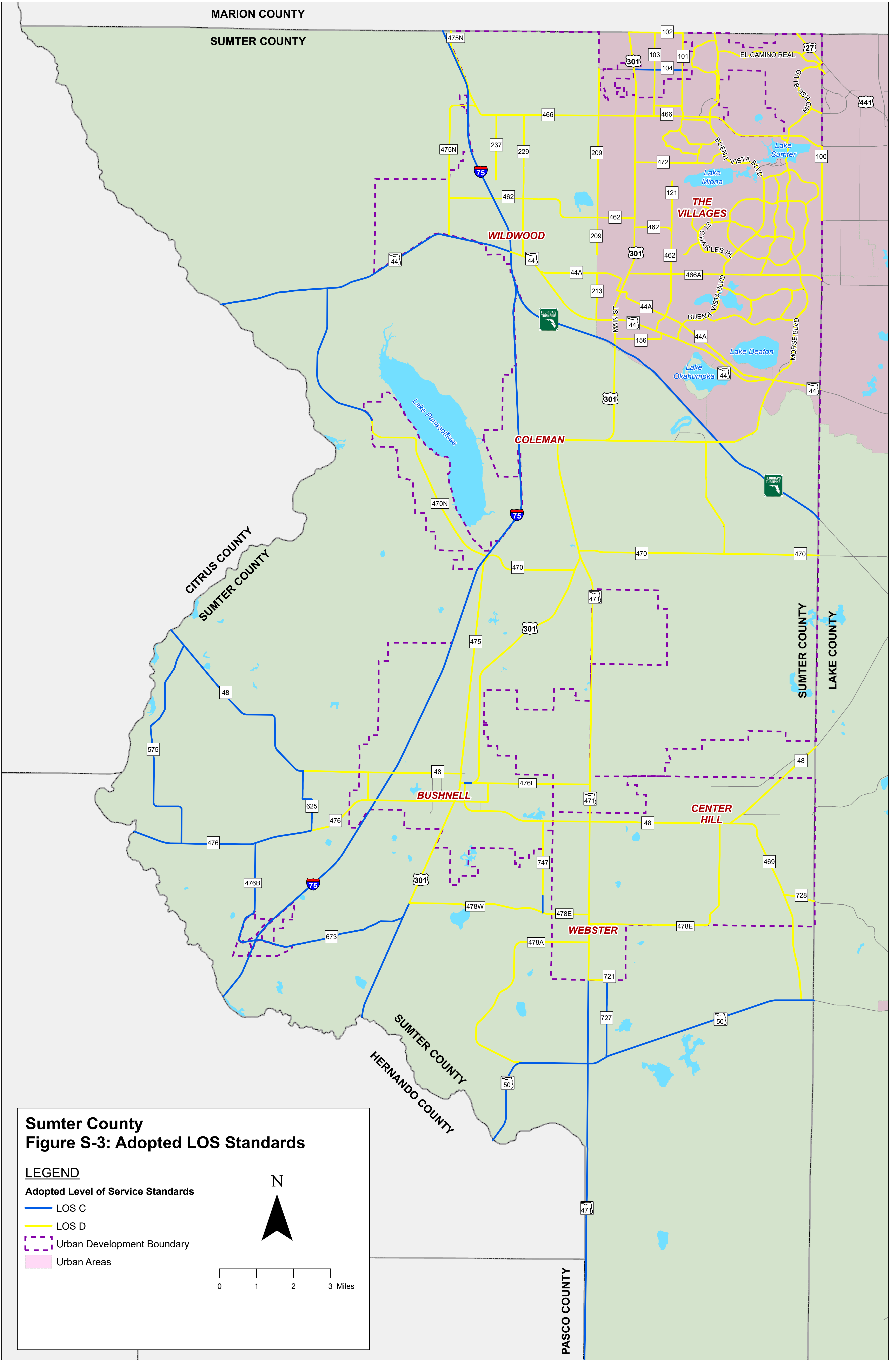
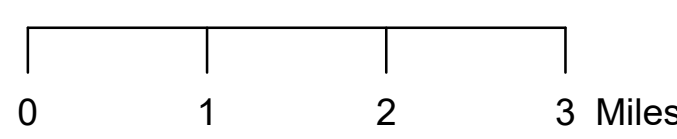
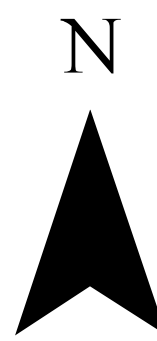
PASCO COUNTY

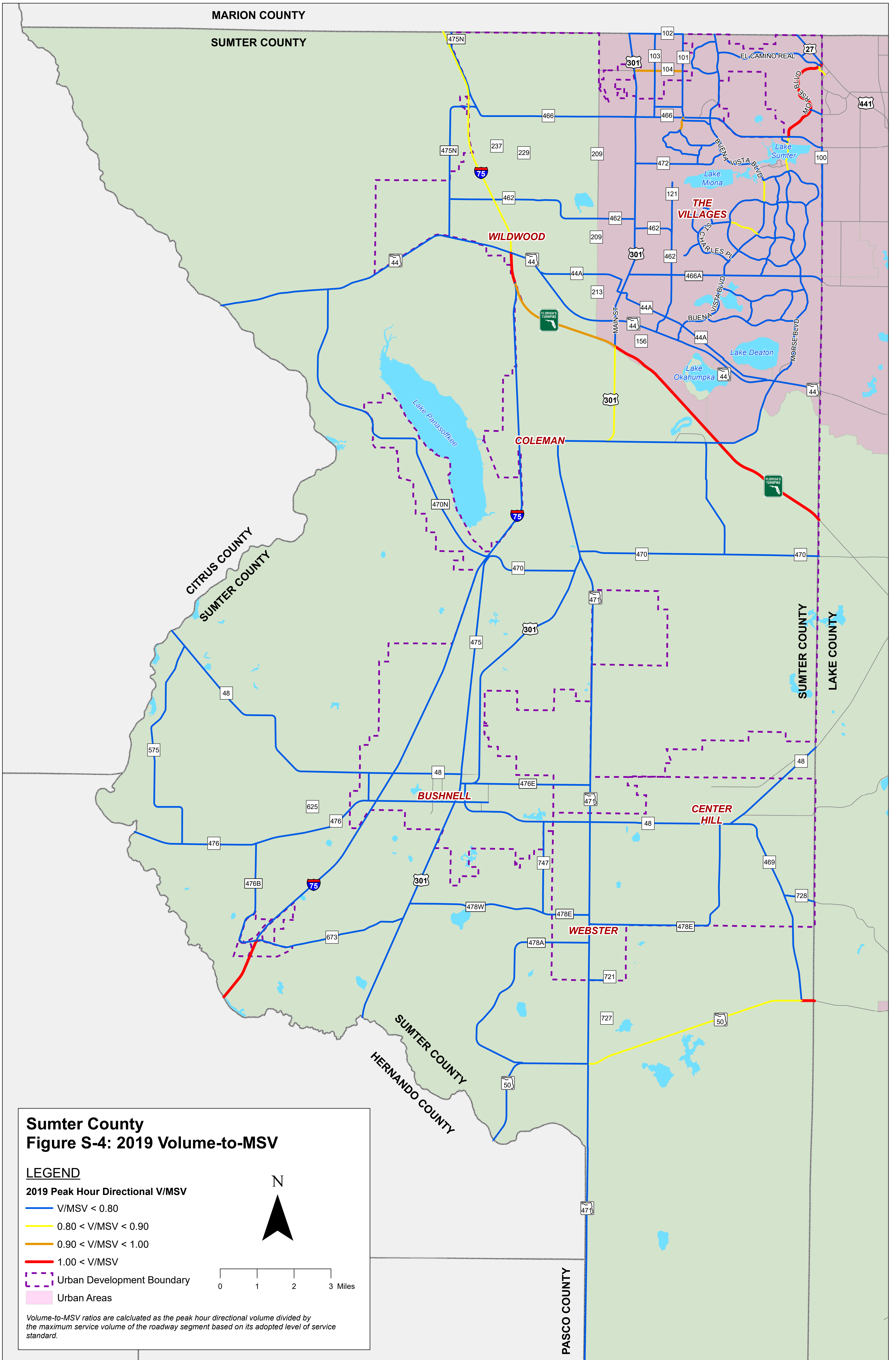
Sumter County Figure S-3: Adopted LOS Standards

LEGEND

Adopted Level of Service Standards

- LOS C
- LOS D
- Urban Development Boundary
- Urban Areas





MARION COUNTY

SUMTER COUNTY

CITRUS COUNTY
SUMTER COUNTY

SUMTER COUNTY
HERNANDO COUNTY

PASCO COUNTY

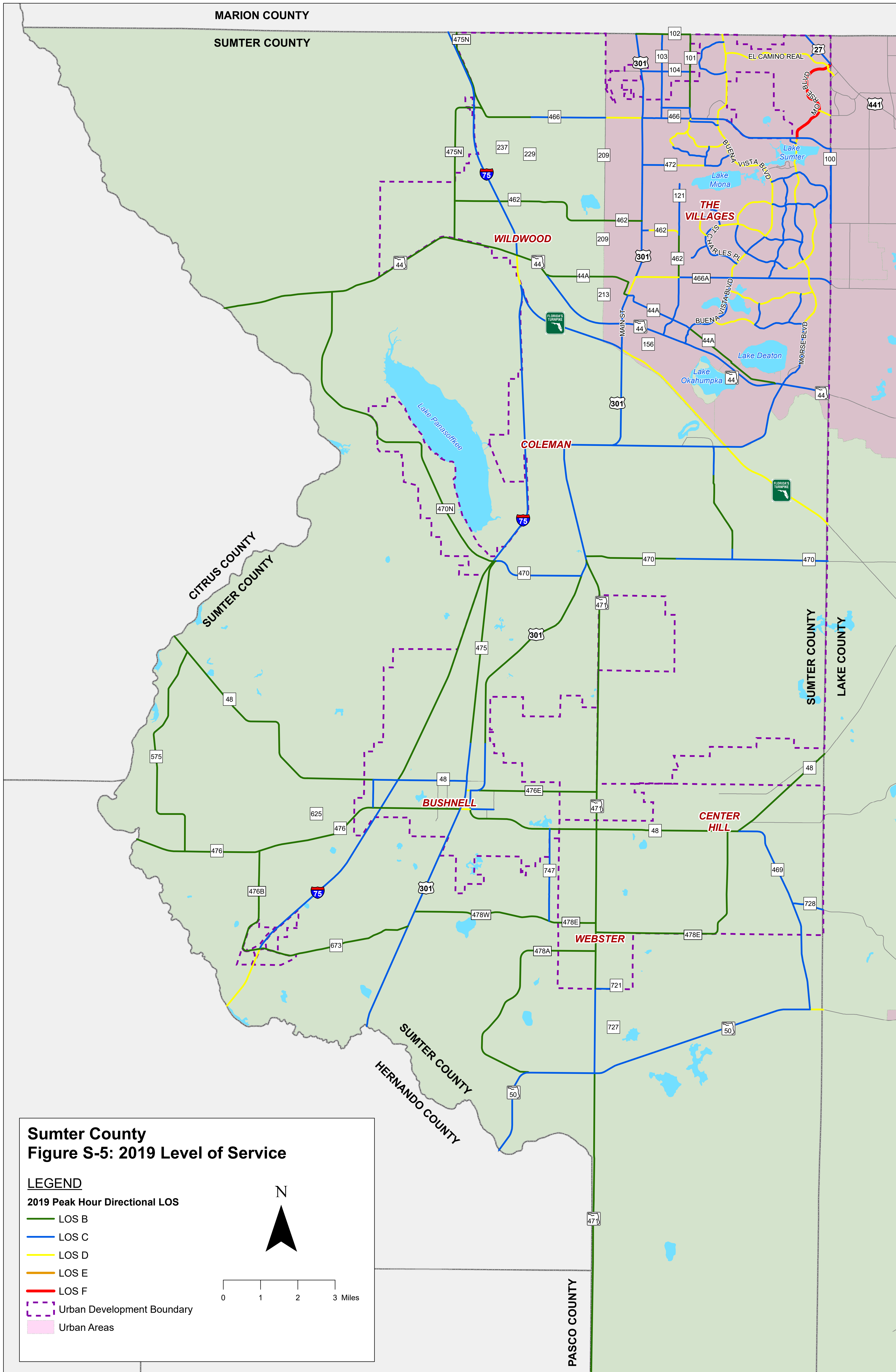
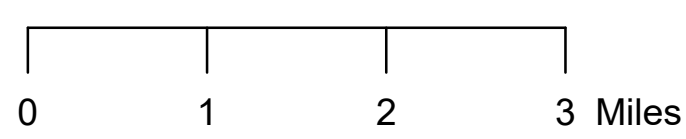
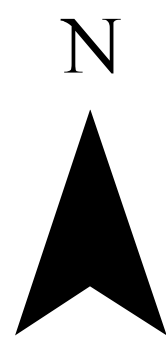
SUMTER COUNTY
LAKE COUNTY

Sumter County Figure S-5: 2019 Level of Service

LEGEND

2019 Peak Hour Directional LOS

- LOS B
- LOS C
- LOS D
- LOS E
- LOS F
- Urban Development Boundary
- Urban Areas



MARION COUNTY

SUMTER COUNTY

CITRUS COUNTY
SUMTER COUNTY

SUMTER COUNTY
HERNANDO COUNTY

SUMTER COUNTY
LAKE COUNTY

PASCO COUNTY

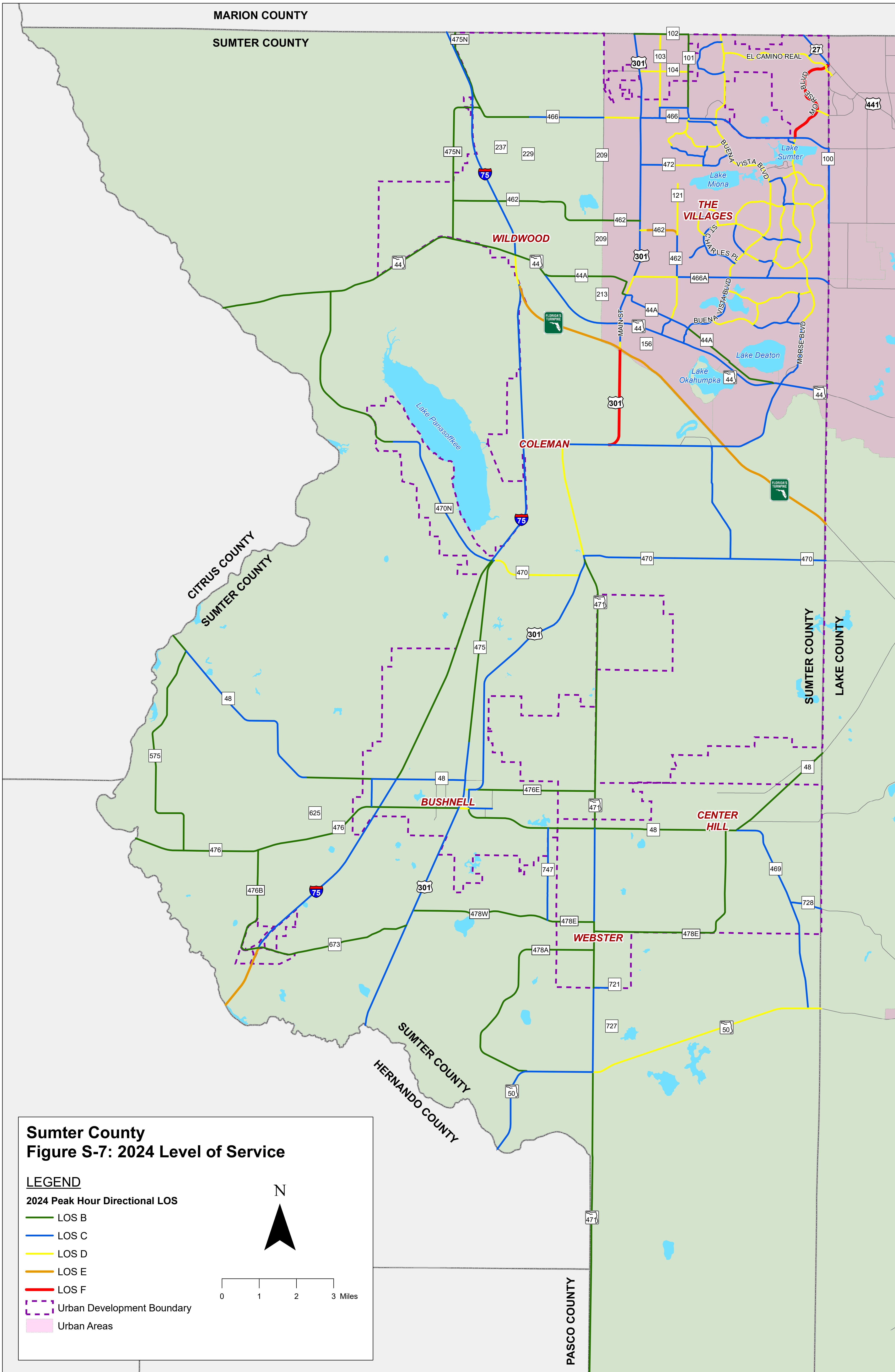
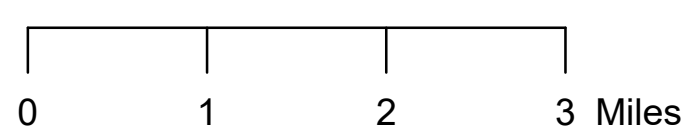
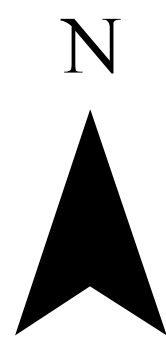
Sumter County Figure S-7: 2024 Level of Service

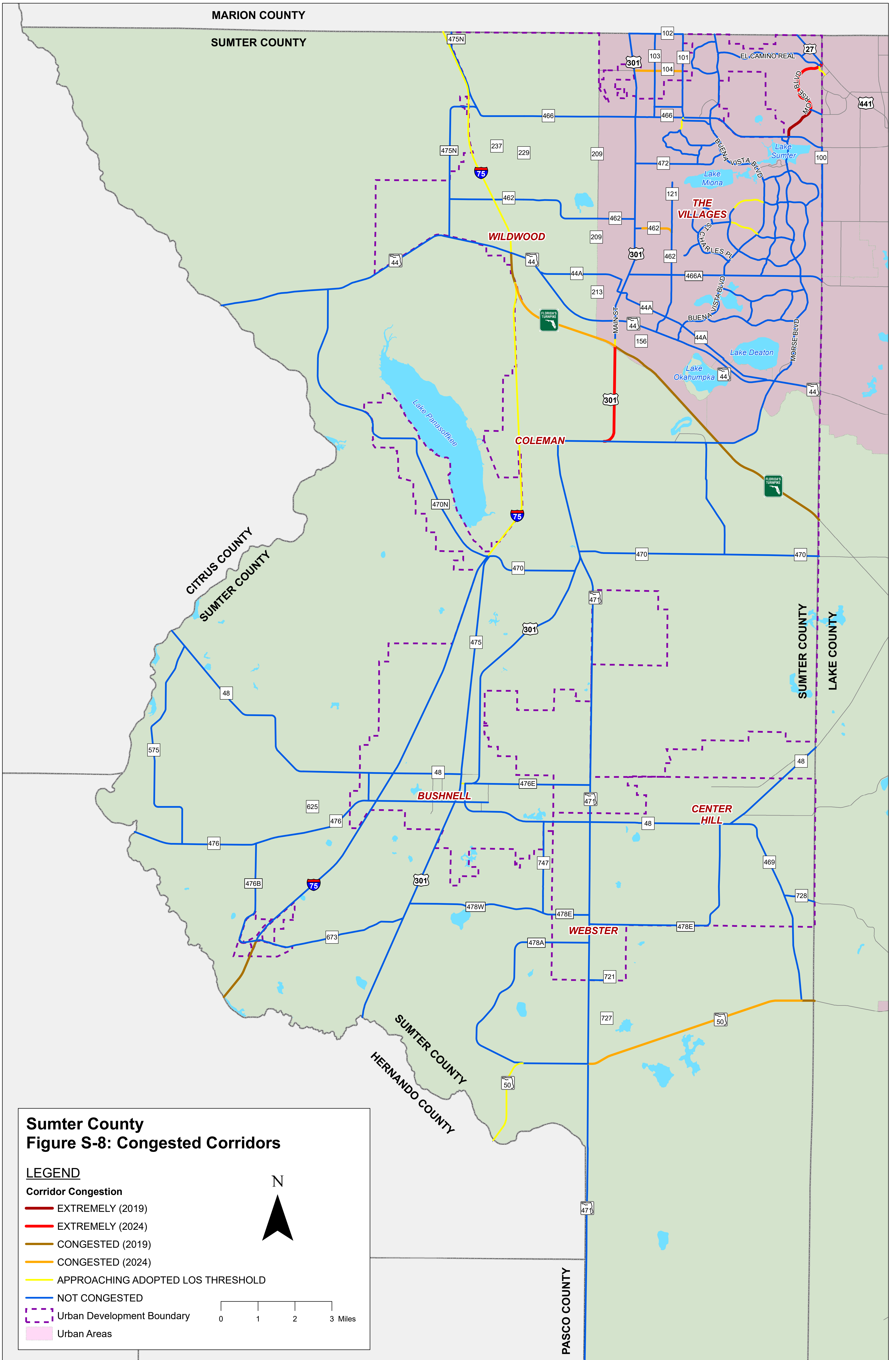
LEGEND

2024 Peak Hour Directional LOS

- LOS B
- LOS C
- LOS D
- LOS E
- LOS F

- - - Urban Development Boundary
- Urban Areas





Sumter County
Figure S-8: Congested Corridors

LEGEND

Corridor Congestion

- EXTREMELY (2019)
- EXTREMELY (2024)
- CONGESTED (2019)
- CONGESTED (2024)
- APPROACHING ADOPTED LOS THRESHOLD
- NOT CONGESTED

- Urban Development Boundary
- Urban Areas

