



## **TECHNICAL ADVISORY COMMITTEE AGENDA**

**Wednesday, February 12, 2020  
Regular Meeting, 1:30 p.m.**

**225 West Guava Street, Suite 217  
Lady Lake, Florida 32159  
Phone (352) 315-0170 – Fax (352) 315-0993**

- I. OPENING**
  - Call to Order
  - Proper Noticing
  - Determination of Quorum
- II. AGENDA UPDATE**
- III. COMMENTS FROM THE GENERAL PUBLIC ON ANY AGENDA ITEMS**
- IV. CONSENT AGENDA**
  - A. Approval of November 13, 2019 Meeting Minutes**
- V. ACTION ITEMS**
  - A. Approval of New TAC Chair to replace Dale Bogle**
  - B. Recommend Approval of Draft FY 2020/21- 2021/22 Unified Planning Work Program (UPWP).**

MPOs must have a scope of work in order to receive federal and state funding. The Unified Planning Work Program is the scope of work detailing all tasks to be completed by the MPO utilizing grant funding. The document details staffing and operational costs as well as direct costs for various tasks that may be

accomplished by staff or consultants. The format for the document is undergoing a major overhaul as requirements of the Florida Department of Transportation have evolved. Staff requests approval of the draft document with the understanding that the document will be substantially edited and financial information will be updated when presented for final approval in April.

**Attachments: Staff will present the Draft Lake~Sumter MPO FY 2020/21- 2021/22 Unified Planning Work Program (UPWP) at the meeting for review.**

**Suggested Motion: Approval of the DRAFT Lake~Sumter FY 2020/21-2021/22 UPWP**

**C. Draft Lake~Sumter MPO Continuity of Operations Plan (COOP)**

This document describes and specifies the Lake~Sumter Metropolitan Planning Organization (MPO) Continuity of Operations Plan (COOP). It is the purpose of this Plan to provide guidance to MPO staff in the policies and procedures to be adopted in the event of an interruption of services due to a natural disaster or other emergency. The primary goal is to allow the MPO to resume its normal operations and functions as quickly and completely as possible after the interruption. The COOP includes descriptions of the MPO's mandated principal activities and the individuals and organizations for which they are provided. A listing of key personnel, tools and facilities required to perform these functions is also part of this document. Using this COOP, also referred to as the Plan, will be possible to quickly identify what is provided by the organization and to assemble the staff and resources necessary to continue operations in the event of a disaster, emergency, or other interruption of services. Included are procedures for the order of succession and personnel notification. The Plan describes response to events requiring MPO assistance, continuation of MPO essential functions, office evacuation, and relocation procedures.

**Attachments: Draft Lake~Sumter MPO Continuity of Operations Plan (COOP)**

**Suggested Motion: Approval of Draft COOP for MPO Governing Board Review and Final Approval.**

**D. Recommendation of Approval of Amendment of the 2019/20-2023/24 Transportation Improvement Program**

The Florida Department of Transportation (FDOT), Florida's Turnpike Enterprise (FTE) requests the following amendment to the Lake-Sumter MPO's Fiscal Year 2019/20 to Fiscal Year 2023/24 Transportation Improvement Program (TIP). This request is being made in conjunction with the changes to FDOT's Work Program.

**FM#435787-1 WIDEN TPK- US 27 TO CR 470 (MP 289.3 - 297.3) –  
Add Lanes and Reconstruct – Sponsor: FTE**

**Current TIP Status:**

Project is funded for Fiscal Years 2019/20 and 2021/2022.

**Current TIP:**

Location	Phase	Original Funding Type	Original Amount	Fiscal Year
SR 91, from US 27 to CR 470	PE	PKYI	\$6,999,974	2019/20
			\$1,290,000	2020/21
	PE	PKED	\$10,412,203	2019/20
	ENV	PKYI	\$1,060,000	2020/21
	ROW	PKYI	\$4,456,900	2021/22
		<b>TOTAL:</b>	<b>\$24,219,077</b>	

**Proposed Amendment:**

Location	Phase	Proposed Funding Type	Proposed Amount	Fiscal Year
SR 91, from US 27 to CR 470	PE	PKYI	\$0	2019/20
			\$0	2020/21
	PE	PKED	\$0	2019/20
	ENV	PKYI	\$0	2020/21
	ROW	PKYI	\$0	2021/22
		<b>TOTAL:</b>	<b>\$0</b>	

**Attachments: FDOT TIP Amendment Request Letter**

**Suggested Motion:** Approval of Amendment of the 2019/20-2023/24 Transportation Improvement Program as presented.

**VI. DISCUSSION ITEMS**

**A. Lake~Sumter MPO List of Priority Projects (LOPP)**

MPO Staff will provide a status update on projects submitted, LOPP prioritization process and schedule for final approval.

**B. Congestion Management Process (CMP)**

MPO Staff will provide the 2020 CMP database and county map series for discussion and review.

**Attachments: 2020 CMP Database, County Map Series**

**C. 2045 Long Range Transportation Plan**

The MPO is currently developing the 2045 Long Range Transportation Plan. A series of public surveys will be available on the project website [www.lakesumtermpo.com](http://www.lakesumtermpo.com). Milestone documents will also be posted on the website so that all interested parties can track the progress of the plan as it is developed. The final plan must be adopted by the MPO governing board by December, 2020.

## 2045 LRTP Project Milestones

TAC/CAC Meeting	4/8/2020	Financial Forecast & Preliminary Needs Assessment
MPO Board Meeting	4/22/2020	
TAC/CAC Meeting	6/10/2020	Needs Assessment + Priority Projects
MPO Board Meeting	6/24/2020	
TAC/CAC Workshop (Tentative)	8/12/2020	Draft Cost Feasible Projects
MPO Board Workshop (Tentative)	8/26/2020	
TAC/CAC Meeting	9/9/2020	Draft Adoption Report
MPO Board Meeting	9/23/2020	
TAC Meeting	10/14/2020	Adoption Report
CAC Meeting	10/14/2020	
MPO Board Meeting	10/28/2020	Adoption Report (Open Public Comment)
TAC/CAC Meeting	11/18/2020	Committee & Public Comment
MPO Board Meeting	12/9/2020	Final Plan Adoption

## VII. PRESENTATIONS, STATUS REPORTS

- A. Florida Department of Transportation**
- B. Florida Turnpike Enterprise, (FTE)**
- C. Central Florida Expressway Authority (CFX)**
- D. Sumter County Public Works Report**
- E. Lake County Public Works / Transit Report**
- F. Committee Member and Staff Reports**

## VIII. ADJOURNMENT – NEXT MEETING: April 8, 2020 @ 1:30

Pursuant to the provisions of Chapter 286, Florida Statutes, Section 286.0105, if any person decides to appeal any decision made by the Lake~Sumter Metropolitan Planning Organization with respect to any matter considered at the meeting, he or she may need to ensure that a verbatim record of the proceedings is made, which record includes the testimony and evidence upon which the appeal is to be based. All interested citizens are welcome to attend. Persons with disabilities needing assistance to participate in any of the proceedings should contact the Lake~Sumter Metropolitan Planning Organization at (352) 315-0170, at least 48 hours in advance of the scheduled meeting.

**Minutes**  
**Lake~Sumter Metropolitan Planning Organization**  
**Technical Advisory Committee (TAC) Meeting**

**Wednesday, November 13, 2019**  
**Regular Meeting, 1:30 p.m.**

**225 West Guava Street, Suite 207**  
**Lady Lake, Florida 32159**  
**Phone (352) 315-0170 – Fax (352) 315-0993**

**OPENING**

Chair C.T. Eagle, called the meeting to order at 1:30 p.m.; and confirmed the meeting was properly noticed and a quorum was present.

**Members Present**

Melving Isaac	Lake County
Deborah Snyder	Sumter County
Stephen Kennedy	Sumter County
Dale Bogle – Vice Chair	City of Fruitland Park
C.T. Eagle - Chair	Town of Lady Lake
DC Maudlin	City of Leesburg
Tim Wilson	City of Mount Dora

**Members Absent**

Helen LaValley	Lake County Schools
Jill Brown	Lake County/Transit
Stephen Cross	Town of Astatula
Denise Lee	City of Bushnell
John Kruse	City of Clermont
Rick Gierok	City of Eustis
Tim Maslow	City of Groveland
Dolly Miller	City of Mascotte
Joyce Heffington	City of Minneola
Antonio Fabre	City of Tavares
Aaron Mercer	City of Umatilla
Melanie Peavy	City of Wildwood

**Staff Present**

Mike Woods	Executive Director
Doris LeMay	Executive Assistant

**Others Present**

Jamie Kersey	FDOT
Siaosi Fine	Turnpike Enterprise

## **II. AGENDA UPDATE**

None

## **III. COMMENTS FROM THE GENERAL PUBLIC ON ANY AGENDA ITEMS**

None

## **IV. CONSENT AGENDA**

**A. Approval of October 9, 2019 Meeting Minutes**

**B. Approval of 2020 TAC Meeting Calendar**

**Motion** was made by Dale Bogle to approve Items A and B of the Consent Agenda, seconded by Tim Wilson – **motion passed 7-0.**

## **V. ACTION ITEMS**

**A. Election of TAC Officers for 2020**

**Motion** was made by Deborah Snyder to nominate Dale Bogle as Chair of TAC for 2020, seconded by DC Maudlin – **motion passed 7-0.**

**Motion** was made by Dale Bogle to nominate Deborah Snyder as Vice Chair of TAC for 2020, seconded by Tim Wilson – **motion passed 7-0.**

**B. FDOT/FHWA- Performance Measure Safety Targets – Annual Approval**

Mike Woods provided a brief overview on the Performance Measure Safety Measure Targets.

**Motion** was made by DC Maudlin to approve the FDOT targets for the federally mandated performance measure area of PM1 Safety, seconded by Dale Bogle – **motion passed 7-0.**

**C. TRANSPORTATION 2040 Long Range Transportation Plan Amendment – Draft LRTP GAST ACT Compliance**

William Roll, Kimley-Horn presented the 2040 amendment.

**Motion** was made by Melving Isaac to approve the 2040 LRTP Amendment as presented, seconded by Dale Bogle – **motion passed 7-0.**

**D. 2045 Long Range Transportation Plan (LRTP) Major Update**

William Roll, Kimley-Horn presented the 2045 LRTP Goals and Objectives.

**Motion** was made by Dale Bogle to approve the 2045 LRTP Goals and Objectives as presented, seconded by Melving Isaac – **motion passed 7-0.**

- E. Lake~Sumter MPO Congestion Management Process (CMP)**  
William Roll, and Amber Gartner Kimley Horn presented the CMP Policy and Procedure Manual. Discussion continued.

**Motion** was made by Tim Wilson to approve the CMP Policy and Procedure Manual as presented, seconded by Dale Bogle – **motion passed 7-0.**

- F. Lake~Sumter MPO List of Priority Projects (LOPP) Call for Projects for 2020.**  
Mike Woods provided a brief overview of the Lake~Sumter MPO LOPP. Discussion continued.

## **VI. PRESENTATIONS, STATUS REPORTS**

- A.** Florida Department of Transportation – Jamie Kersey provided update, Judy Pizzo presented Florida Transportation Plan 2045
- B.** Florida’s Turnpike Enterprise – Siaso Fine – Tentative Five-Year Work Program
- C.** Central Florida Expressway Authority (CFX) - Mike Woods
- D.** Sumter County –Report in package
- E.** Lake County
- F.** Committee Member and Staff Reports

- IX. ADJOURNMENT** – Motion was made by DC Maudlin to adjourn meeting, seconded by Tim Maslow. There being no further business, meeting adjourned at 2:53 p.m.

---

Dale Bogle, Chair



# Continuity of Operations Plan (COOP)

Lake~Sumter Metropolitan Planning Organization  
225 W. Guava St.  
Suite 211  
Lady Lake, Florida 32159  
(352) 315-0170

*Scheduled for adoption February 26, 2020*



# CONTENTS

## Contents

Table of Contents.....	1
MPO Address and Contact Information.....	2
Resolution Adopting the Continuity Of Operations Plan (COOP).....	3
About the MPO.....	<b>Error! Bookmark not defined.</b>
Continuity Of Operations Plan (COOP).....	5
Executive summary.....	6
Purpose.....	6
Applicability and Scope.....	7
Florida State Emergency Operations Center Activation Levels.....	8
Notifications and Essential Functions.....	<b>Error! Bookmark not defined.</b>
Concept of Operations.....	10
Leadership.....	12
Alternate Facility Operations.....	13
COOP Planning Responsibilities and Maintenance.....	16
Emergency or Special Meetings.....	16

## TABLES

Table 1   Notification of Authorities.....	<b>Error! Bookmark not defined.</b> 9
Table 2   Successors.....	<b>Error! Bookmark not defined.</b> 12
Table 3   Technical Support Contacts.....	<b>Error! Bookmark not defined.</b> 14

## APPENDICES

<b>APPENDIX A: ALTERNATIVE SITE LOCATIONS FOR MPO OFFICE.....</b>	<b>18</b>
<b>APPENDIX B: LADY LAKE LIBRARY BUILDING PROCEDURE – OFFICE EVACUATION ROUTES.....</b>	<b>19</b>
<b>APPENDIX C: TRANSPORTATION ACRONYM GUIDE.....</b>	<b>20</b>

For more information about the Lake~Sumter Metropolitan Planning Organization or to learn about ways to get involved, please contact:



**Lake~Sumter MPO Office**

225 W. Guava Street, Suite 211

Lady Lake, FL 32159

Phone: (352) 315-0170

Fax: (352) 315-0993

Web: [www.LakeSumterMPO.com](http://www.LakeSumterMPO.com)

**LAKE~SUMTER METROPOLITAN PLANNING ORGANIZATION  
RESOLUTION 2020 - \_\_\_\_**

**RESOLUTION OF THE LAKE~SUMTER METROPOLITAN PLANNING ORGANIZATION (MPO) ADOPTING THE LAKE~SUMTER METROPOLITAN PLANNING ORGANIZATION CONTINUITY OF OPERATIONS PLAN (COOP).**

**WHEREAS**, the Lake~Sumter Metropolitan Planning Organization (MPO), designated by the Governor of the State of Florida as the body responsible for the urban transportation planning process for the Lake-Sumter Urban area; and

**WHEREAS**, Section 339.175, Florida Statutes and 23 U.S.C. § 134 requires that the urbanized area, as a condition of the receipt of federal capital or operating assistance, have a continuing, cooperative, and comprehensive transportation planning process that results in plans and programs consistent with the comprehensively planned development of the urbanized area; and

**WHEREAS**, a Continuity of Operations Plan (COOP) is defined as part of the transportation planning work program which identifies the planning strategies and the planning activities to be undertaken by the MPO; and

**WHEREAS**, the MPO has developed a COOP to ensure MPO could continue essential functions and operations in the event of an emergency.

**NOW, THEREFORE BE IT RESOLVED** by the Lake~Sumter Metropolitan Planning Organization (MPO) that:

The Lake~Sumter Metropolitan Planning Organization Continuity of Operations Plan (COOP) is hereby adopted.

**PASSED AND ADOPTED** this \_\_\_\_\_ day of \_\_\_\_\_, 2020.

Lake~Sumter Metropolitan Planning Organization

\_\_\_\_\_  
Leslie Campione, Chair

Approved as to form and legality:

\_\_\_\_\_  
Melanie Marsh, MPO Attorney

## ABOUT THE MPO

Representatives of Lake County and Sumter County governments, the fourteen (14) municipalities of Lake County, the five (5) municipalities of Sumter County, the Florida Department of Transportation (FDOT), Florida Central Railroad, Lake County Schools, Sumter District Schools, and the U.S. Department of Transportation (USDOT) are involved in the transportation planning process facilitated by the Lake~Sumter Metropolitan Planning Organization (LSMPO). LSMPO's purpose is to provide effective leadership in the initiation and development of transportation plans, programs and strategies.

As the governmental body most directly responsible for the guidance of the transportation planning process, LSMPO strives to ensure recommendations comply with the goals and standards of the Federal Government, the State, Lake County, Sumter County, and the nineteen (19) incorporated jurisdictions. LSMPO functions include, but are not limited to, the preparation of the tasks required by state rule or by federal policy.

LSMPO's major annual responsibilities are to perform the tasks of preparing the Unified Planning Work Program (UPWP), the Long Range Transportation Plan (LRTP), the Public Involvement Plan (PIP), the Transportation Improvement Program (TIP), the annual List of Priority Projects (LOPP), the Transportation Disadvantaged Service Plan (TDSP), and the annual LSMPO Audit Report.

As with all transportation planning legislated by federal and state laws, LSMPO is responsible for ensuring adequate representation of and compatibility among state, county, and municipal projects in the transportation planning process. This includes consideration of all modes of transportation with respect to various members of the public. For example, LSMPO incorporates into its planning efforts the needs of the elderly and persons with disabilities as outlined in the Americans with Disabilities Act (ADA).

As part of the MPO planning process, public involvement is a major priority. Projects funded through public dollars are planned in a manner that encourages public participation and incorporates public comments into planning efforts. As a result, a responsibility is placed on MPOs to develop a plan where the opportunity for public involvement is assured. As part of that plan, a required element is the outlining of the means by which to measure the success of the public involvement activities. By strategizing public involvement techniques and then monitoring and measuring the effectiveness, better planning products emerge that genuinely capture the needs of the public.

Anyone wishing to contact the MPO with comments, questions, or complaints, please contact:



**Michael Woods**  
**Executive Director**  
(352) 315-0170 Ext. 2  
MWoods@LakeSumterMPO.com

## CONTINUITY OF OPERATIONS PLAN (COOP)

This Continuity of Operations Plan (COOP) was prepared by the Lake~Sumter Metropolitan Planning Organization (MPO) to develop, implement and maintain a viable COOP capability. This COOP complies with applicable internal agency policy, local and state regulations, and supports recommendations provided in the Federal Emergency Management Agency's (FEMA) Federal Preparedness Circular 65. This COOP has been distributed internally within the Lake~Sumter MPO and with external agencies that may be affected by its implementation.

For complaints, questions or concerns about civil rights or nondiscrimination, or for special requests under the Americans with Disabilities Act, please contact: Michael Woods, Executive Director at [mwoods@Lakesumtermpo.com](mailto:mwoods@Lakesumtermpo.com) or (352) 315-0170 x2.

## EXECUTIVE SUMMARY

This document describes and specifies the Lake~Sumter Metropolitan Planning Organization (MPO) Continuity of Operations Plan (COOP). The purpose of this Plan is to provide guidance to Lake~Sumter MPO staff on the policies and procedures to follow in the event of an interruption of services due to a natural disaster or other emergency. The primary goal is to allow the Lake~Sumter MPO to resume its normal operations and functions as quickly and completely as possible after the interruption.

The COOP includes descriptions of the Lake~Sumter MPO's mandated principal activities and the individuals and organizations for which they are provided. A listing of key personnel, tools and facilities required to perform these functions is also part of this document. The COOP, also referred to as the Plan, will allow one to quickly identify what is provided by the organization and to assemble the staff and resources necessary to continue operations in the event of a disaster, emergency, or other interruption of services. Included are procedures for the order of succession and personnel notification.

The Plan describes response to events requiring Lake~Sumter MPO assistance, continuation of Lake~Sumter MPO essential functions, office evacuation, relocation, and restoration procedures.

Questions concerning this Plan should be directed to:

Michael Woods, Executive Director  
Lake~Sumter Metropolitan Planning Organization  
225 West Guava St. Suite 211  
Lady Lake, FL 32159  
(352) 315-0170 x2  
MWoods@lakesumtermpo.com

## PURPOSE

The purpose of this COOP Plan is to ensure that the essential functions of the Lake~Sumter MPO will continue in the event of a major event, emergency or disaster. The plan outlines procedures for alerting, notifying, activating and deploying employees and outlines the basic procedures to restore MPO operations.

The primary mission of the Lake~Sumter Metropolitan Planning Organization (MPO) is to collaboratively plan, prioritize and fund the delivery of diverse transportation options. MPO staff members, under the direction of the MPO Board, develop transportation plans and programs for the urbanized areas of Lake County and Sumter County. These activities include long and short-range planning and coordination of multimodal transportation services such as transit, roadway, pedestrian, bicycle, greenways, seaport, airport, rail and the movement of freight and goods.

The MPO Board is composed of elected officials charged with transportation decision-making responsibilities. The Board is assisted by three federally mandated advisory committees: the Technical Advisory Committee (TAC), which offers technical expertise and advice; the Citizens' Advisory Committee (CAC), which provides public input and direction; and the Transportation Disadvantaged (TD) Local Coordinating Board (LCB). Using the COOP as a reference manual, communication and coordination is facilitated with these four key groups (MPO, TAC, CAC and LCB) following a crisis or disaster.

The COOP will serve as a guide to staff as they continue to support these organizations in response to an emergency, as well as provide the usual products and services that the MPO provides to the

residents and visitors of Lake County and Sumter County. The MPO office is located at: 225 West Guava St. Suite 211, Lady Lake, FL 32159.

The MPO office will be the COOP Control Center unless rendered unavailable or if an evacuation has been ordered by the Emergency Response Team, located at the Emergency Operations Centers (EOC), in Tavares, Florida and in Bushnell, Florida. If the offices are not available due to damage or hazard, refer to Appendix A for alternative sites for staff activities, including meetings of the MPO and advisory committees.

The purpose of this COOP is to provide the conditions for continuous performance of essential operations during a crisis, disaster, or other debilitating loss of resources; ensure the safety of the staff; protect essential equipment, records, and other assets; reduce disruption of operations; minimize damage and losses; achieve an orderly recovery from emergency operations; identify relocation requirements; and ensure operational and managerial requirements are met before an emergency occurs. This Plan outlines activities before and after a crisis, disaster, or other debilitating loss of resources, which is termed "incident" in this Plan. It also outlines contingencies to mitigate, prepare for, respond to, and recover from an incident.

## APPLICABILITY AND SCOPE

The COOP Plan is applicable to situations determined by the Executive Director of the Lake~Sumter MPO to require relocation/re-establishment of essential functions of the MPO. It will provide staff with instructions and expectations concerning actions to be taken in such situations.

The plan addresses the full spectrum of potential threats, crises and emergencies, but does not apply to temporary disruptions of service during short-term building evacuations or other situations where services are anticipated to be restored in the primary facility within a short term. The Executive Director will determine situations that require implementation of the COOP Plan.

### GET THE MOST CURRENT INFORMATION

The most up-to-date information about our the Lake~Sumter Metropolitan Planning Organization's website calendar. You can access it through the following link:

<http://www.LakeSumterMPO.com/calendar.aspx>

# FLORIDA STATE EMERGENCY OPERATIONS CENTER ACTIVATION LEVELS

Throughout this document, activation levels are referenced. The Lake~Sumter MPO follows the Florida State Emergency Operations Center (EOC) Activation Levels which are defined as follows:

## [Florida Activation Levels Guide](#)

### LEVEL III: Monitoring & Assessment

Level III is typically a monitoring and assessment phase where a specific threat, unusual event, or situation, is actively monitored by the EOC. A Level III activation is an internal process and involves little, if any, inter-agency direction or coordination. The threat, unusual event, or situation simply warrants observation, verification of appropriate action, and follow-up by staff.

### LEVEL II: Partial Activation

Level II partial activation is typically limited agency activation. The COOP Leader (Table 2) and lead agencies with a role in the incident response are activated and required to report to the EOC. All other emergency support functions are alerted of the event and are on standby. The purpose of Level II activation is to initiate preparations due to a significant threat of a disaster or to coordinate response due to the occurrence of a minor disaster.

### LEVEL I: Full Activation

All primary and support agencies are notified. The COOP is in full effect and all necessary Operations Phases will be conducted. In a full-scale activation, the COOP is activated on a 24-hour schedule due to an imminent threat or occurrence of a disaster.

## NOTIFICATIONS AND ESSENTIAL FUNCTIONS

When an emergency or crisis is declared, the Executive Director or designee shall notify the MPO Chair and will begin implementation of the COOP. Once the COOP is implemented in response to an incident, it will immediately affect all Lake~Sumter MPO staff and will involve notification of the following authorities:



**Table 1. Notification of Authorities**

A. Lake~Sumter MPO Board	Chair and members
B. Technical Advisory Committee (TAC)	Chair and members
C. Community' Advisory Committee (CAC)	Chair and members
D. Transportation Disadvantaged Coordinating Board (TDCB)	Chair and members
E. Florida Department of Transportation (FDOT)	Secretary
F. Federal Highway Administration (FHWA)	Division Administrator
H. Federal Transit Administration (FTA)	Regional Administrator

The Executive Director or designee shall also notify all MPO staff. MPO staff contact information (including personal phone numbers and email accounts, if available) is updated by the MPO's Human Resources Administrator or designee and the latest information is provided to all staff in a Level II activation or emergency event.

In addition to the above notifications, the following are those essential functions, in priority order, that should be performed by the Lake~Sumter MPO, to the maximum extent feasible:

- Ensure, in coordination with the MPO host agency, the integrity of data and records relating to internal and external mandates, responsibilities and administrative operations. Maintain and/or restore access to data and other resources immediately after an event.
- Restore communication with MPO, TAC, CAC, and LCB members; arranging, advertising, and holding regularly scheduled or emergency meetings as soon as feasible.
- Maintain or reestablish contact with appropriate internal and external authorities and agencies, including the MPO host agency.
- Provide technical support to assist in planning and restoration of Lake County and Sumter County transportation systems.
- Ensure that the integrity and compliance of the Lake~Sumter MPO's planning programs are maintained and products and services are delivered.
- Provide servicing of MPO agreements, maintain grant invoicing and payroll.

# CONCEPT OF OPERATIONS

## Decision Process

The COOP will be activated by the Lake~Sumter MPO Executive Director as a response to a Level II activation of the Emergency Operations Center or an emergency event, such as a terrorist attack, natural disaster, or other incident. The purpose of Level II activation is to initiate preparations due to a significant threat of a disaster or to coordinate response due to the occurrence of a minor disaster.

In the event the Executive Director is not available, responsibility for initiating and implementing the COOP will devolve onto the next Lake~Sumter MPO staff member in the chain of command (Table 2). The person assuming the Lake~Sumter MPO staff's lead role in executing the COOP will be known as the "COOP Leader." It is expected that the COOP Leader's action will either be an obvious response to external circumstances (for example, a nearby industrial accident affecting day-to-day operations) or a command or directive from a higher authority such as the Lake~Sumter MPO Board or an Emergency Response Team (ERT) mobilization.

## Alert, Notification and Implementation Process

At the time of a Level II activation, staff with working files located on their local C: drive will copy the files to their folders on the appropriate network drive (S:\MPO Share).

If the possibility exists that Level II activation may occur during non-working hours the Executive Director or designee will determine if Level II activation should occur prior to an official activation. At a minimum, staff will take laptops home and move monitors/ CPUs to designated "protected" areas such as the Conference Room, or Storage Rooms located in the MPO Office or MPO Board Room. Upon leaving the office, all office doors must be closed.

Upon Level II activation for weather/hurricane related emergency, the COOP Leader will call a meeting and set in motion the COOP.

- Staff not present will be notified by telephone and email by the COOP Leader or designee. In the event the activation occurs after working hours, the COOP Leader or designee will initiate telephone contact or send email that will reach all employees through their pre-recorded contact information on the Master Employee Contact List, which is maintained by the Human Resources Administrator or designee.
- It will be the responsibility of those who are not reachable to establish contact with the COOP Leader, Executive Director or Chief of Staff within 24 hours of the Level II activation.

## Staff Responsibilities

The following procedures will be initiated by staff members at the primary work facility if they are present at that facility when the emergency is declared:

- Secure all necessary files and computer equipment and back up or record all essential data on a USB flash drive, the MPO server, or backup files to Microsoft OneDrive using Office 365

account. Each staff member can access their OneDrive Folder by logging into <https://login.microsoftonline.com> using their domain logon credentials. Files left on your PC may not be available. By going to the link below, staff can log into the web version of Outlook to view their emails. Web Outlook can be accessed through any web browser using domain logon credentials: <https://outlook.office365.com>

- Record a brief, generic message on the main switchboard line (352) 315-0170 like this:
  - “Thank you for calling the Lake~Sumter Metropolitan Planning Organization. Our offices are currently closed due to (choose one) Tropical Storm/Hurricane \_\_\_\_\_.”
- Everyone should record or update the outgoing messages on their phone before being sent home for an approaching storm like this:
  - “You have reached the voice mail box for \_\_\_\_\_. Our office is currently closed due to Tropical Storm/Hurricane \_\_\_\_\_. I will return your call when our office reopens.”
- Everyone should activate a brief out-of-office message on their email account like this:
  - “Our office is currently closed due to Tropical Storm/Hurricane \_\_\_\_\_. I will reply to your email when our office reopens.”
- A message should be placed on the website calendar and the MPO webpage
  - Office closed due to Tropical Storm/Hurricane \_\_\_\_\_.
- In the event of a storm, minimize water and wind damage by:
  - Covering or closing/locking all desks, cabinets and storage areas.
  - Close office doors
  - Disconnect computer hardware and electrical equipment, and place delicate equipment and paper files in plastic bags and seal the bags.
  - Follow established Lady Lake Library building procedures as described in Appendix B.

# LEADERSHIP

## Order of Succession

The table below lists the chain of command for the Lake~Sumter MPO staff's COOP Leader. If the senior ranking staff member is incapacitated or out of the area at the time of activation the next ranking staff member will assume his or her duties.

**Table 2. Successors**

Successors: "Chain of Command"	
Michael Woods	Executive Director
Doris Lemay	Executive Assistant
Vacant	Senior Transportation Planner
Vacant	Transportation Planner
	Transportation Planner

## Delegation of Authority

The Lake~Sumter MPO Executive Director, or their immediate successor in the list above if the Executive Director is not available, will be in authority and will be known as the COOP Leader. The Executive Director may appoint a successor outside of the chain of command, or change the order of the chain of command in the event of special circumstances, to succeed him/her.

## Devolution

The primary function of the MPO is transportation planning, not the physical construction nor the day-to-day operation of transportation facilities. However, should an event occur, the MPO's planning priorities are to provide financial support necessary to maintain the existing transportation system and provide for payment to those associated with MPO agreements and contracts.

In the event of a worst-case scenario, in which the Lake~Sumter MPO offices are completely destroyed and/or leadership is incapacitated, the organization should be prepared to transfer all of their essential functions and responsibilities to personnel at a different office or location and MPO functions may be handled at a lower staff level.

The Florida Department of Transportation and Federal Highway Administration have file copies of the Lake~Sumter MPO's major planning documents, including the Long Range Transportation Plan, Transportation Improvement Program, Unified Planning Work Program, grant invoicing packages, consultant contracts and Joint Participation Agreements should it become necessary for the MPO to reestablish itself. Other documents including, but not limited to, the Inter-Local Agreements (ILA) to establish the MPO and the Florida Commission for the Transportation Disadvantaged Planning Grant Agreement should reside on the MPO server.

## ALTERNATE FACILITY OPERATIONS

Given the MPO latest technology and IT system, it is possible for MPO staff to work remotely from home or other locations and have access to most of the files and programs they would at the MPO offices. However, based on the event, circumstances, and judgement of the COOP Leader, an alternate facility may be needed to perform the essential functions of the MPO. If an alternate facility is needed, upon arrival at that facility, the COOP Leader will delegate shifts for available staff, and assign staff to test the facility's internet connection, set up computers, establish email, and test telephone land lines. Telecommuting may also be an option once a base of operations is established.

### Potential Alternate Facility Locations:

The District 5 FDOT at 719 South Woodland Blvd, DeLand, Florida has indicated that "In a disaster situation that renders the Lake~Sumter MPO offices inoperable, FDOT is willing to offer space to the Lake~Sumter MPO providing there is sufficient space available. If space is not available, FDOT will assist the MPO in locating a suitable location."

Refer to Appendix A for additional alternate locations.

The COOP Leader, when determining an alternate location from the locations listed in Appendix A, should take into account the following parameters:

- Sufficient space and equipment.
- Capability to perform essential functions within 12 hours, up to 30 days.
- Reliable logistical support, services, and infrastructure systems.
- Consideration for health, safety and emotional well-being of personnel.
- Interoperable communications (land line telephones, ability to use cell phones from a sheltered position, internet connectivity, fiber optic cable connection to relevant offsite servers and databases, etc.).
- Computer equipment and software.
- Various Municipal Government Locations will be investigated to conduct MPO Board, TAC, CAC, LCB, and other meetings as the need arises.

### Hosted Workstation and Server Environment

The Lake~Sumter MPO has outsourced its IT functions to Lake County Information Technology (IT) Department which handles all of the organizations shared file hosting, servers, and workstations. All hosted e-mail and Microsoft functionality is handled through Office 365 – a fully hosted solution by Microsoft managed by the Lake County IT Department for the Lake~Sumter MPO. Lake~Sumter MPO staff operates in a hosted workstation environment that utilizes provisioned servers in an off-site location to act as remote workstations. This solution allows staff to access their workstations from any Windows-based machine using a remote desktop connection. This includes access to the Lake~Sumter MPO shared files.

The Lake~Sumter MPO shared drives are hosted and backed up utilizing Lake County IT Department's hosted server solution. These files are always accessible through the hosted workstation environment using remote desktop connection. In addition, the MPO's website is hosted and managed by WSP USA. The Lake~Sumter MPO's GIS applications are hosted by the East Central Florida Regional Planning Council (ECFRPC) through the ArcGIS Online application supported by ERSI, Inc.

and assessable through cloud supported software. The following table provides the contact information for the MPO’s hosted services.

**Table 3. Technical Support Contacts**

Technical Support Contact Information	
<b>AARON CHADDICK, Service Desk Manager</b>	352-343-9611, <a href="mailto:achaddick@lakecountyfl.gov">achaddick@lakecountyfl.gov</a>
<b>CHARLES ROSSI, Server Administrator</b>	352-343-9616, <a href="mailto:crossi@lakecountyfl.gov">crossi@lakecountyfl.gov</a>
<b>PJ Smith, AICP, Senior GIS Analyst</b>	407-496-5463, <a href="mailto:pjsmith@ecfrpc.org">pjsmith@ecfrpc.org</a>

## Hardware

At Level II activation by the Lake County EOC or at the direction of the Executive Director, the MPO’s staff will begin preparing the portable hard drives/USB Drives/servers for removal and relocation. Monitors/CPUs should be moved to designated “protected” areas such as the MPO Conference Room, or Storage Room located in the MPO Offices or MPO Board Room. Plastic bags will be placed over the computers, monitors, and large displays for added protection. Staff will take laptops home and the remaining laptops will be stored in the designated laptop cart and moved to one of the “protected” areas.

Lake County IT administrative staff will also be responsible for shutting down all local servers and network devices (network switches, modems, battery backup devices, etc.) in order to ensure the hardware is protected from any power surges or failures. Before departing the MPO offices, MPO administrative staff will be responsible for ensuring all other sensitive IT equipment is properly disconnected and stored.

## General Specifications for Laptops

Four (4) laptops will be needed. All staff members have been assigned a laptop and will utilize these devices for the COOP activation. The fourth laptop acts as a backup in case one of the other laptops fails. All of these devices have been configured with remote session access through Lake County IT Department hosted workstation environment. Alternatively, staff will have a copy of the remote desktop connection shortcut on a flash drive for use on any Windows-based machine in the event there is an issue with laptop provisioning.

The laptops will be used for contacting consultants to request any needs to run graphics, modeling applications, the CFRPM transportation model, and any other necessary programs as needed. All the laptops have a built-in web camera to enable video conferencing and built-in WIFI connections.

## Software

Since most the of the MPO’s software is cloud based and accessible remotely from available laptops, only a limited number of software systems need to be installed at, or made portable so they can be transferred to, the alternative location. The MPO currently outsources all of the analysis, update and maintenance of the planning programs through our General Planning Consultants (GPC) who maintain their own software systems for the MPO’s needs.

## Vital Files, Records and Databases

Like most of the MPO's software, all vital files, records and databases are cloud based and accessible remotely from available laptops. All other programs or files are loaded on individual MPO laptops and can also be accessed from the cloud. Thus there are no files, records or databases that need to be installed at, or made portable so they can be transferred to the alternative location. The following lists those files, records and databases.

Table 4 Files, Records, and Databases

<b>Files, Records, Databases</b>	<b>Form of Record</b>	<b>Hand Carried to Alternate Facility</b>	<b>Backed up at alternate location</b>
<b>Validated Model Input</b>	Electronic		Cloud Based
<b>LRTP Model Input</b>	Electronic		Cloud Based
<b>CFRPM Model Input</b>	Electronic		Cloud Based
<b>ITE Trip Generation</b>	Electronic		Cloud Based
<b>ITE Handbook</b>	Hardcopy/CD		Cloud Based
<b>Hwy Capacity Manual</b>	Hardcopy/CD/Electronic		Cloud Based

## COOP PLANNING RESPONSIBILITIES AND MAINTENANCE

Maintaining the COOP is an ongoing endeavor which should be conducted by the COOP Leader under the direction, supervision and support of the MPO Executive Director. The COOP will be formally reviewed each year prior to June 30th. The personnel and emergency telephone lists will be reviewed and updated annually. The responsibility for all COOP activities are under the supervision of the Executive Director and or the COOP Leader.

### TEST, TRAINING AND EXERCISES (TTE)

An exercise should be conducted annually prior to the start of hurricane season on June 1.

COOP plans should include:

- Individual and team training of agency personnel.
- Annual internal agency testing and exercising of COOP plans and procedures.
- Annual testing of alert and notification procedures.
- Refresher orientation for COOP new personnel.
- Joint interagency exercising of COOP plans, if appropriate.

### MULTI-YEAR STRATEGY AND PROGRAM MANAGEMENT PLAN (MYSPMP)

The COOP will be formally reviewed each year prior to June 30th. It is not anticipated that the MPO will require a MYSPMP.

## EMERGENCY OR SPECIAL MEETINGS

The Chair may call for an emergency meeting for the purpose of acting upon emergency matters affecting the public health, safety, and welfare. Such meeting agenda shall be prepared by the Chair. The agenda and supporting documents shall be made available to the members at least one (1) day prior to the meeting. Meeting agenda shall be posted at the site of the meeting and on the LSMPO website at least twenty-four (24) hours prior to the meeting and emailed to all members. Minutes of the emergency meeting will be posted to the LSMPO website within twenty-four (24) hours of the meeting and a full review of approved items will be discussed at the next regularly scheduled Board meeting.



**We Want  
Your Input!**

The Lake~Sumter MPO encourages public comment. This document is available on the Lake~Sumter website at [www.LakeSumterMPO.com](http://www.LakeSumterMPO.com).



## APPENDICES

- A. Alternate Sites for Staff Activities.
- B. Lady Lake Library Building Procedures (Evacuation Route from Office).
- C. Transportation Acronym Guide

## APPENDIX A: ATERNATE SITES FOR STAFF ACTIVITIES

*“Insert FDOT Location Map”*

## **APPENDIX B: LADY LAKE LIBRARY BUILDING PROCEDURE**

*“insert Lady Lake Library Evacuation Site Map”*

## APPENDIX C: TRANSPORTATION ACRONYM GUIDE

ACRONYM	NAME / TITLE
AA	Alternatives Analysis
AADT	Annual Average Daily Traffic
ADA	Americans with Disabilities Act
ADT	Average Daily Traffic
AE	Annual Element
AFV	Alternative Fuel Vehicle
AIA	American Institute of Architects
AICP	American Institute of Certified Planners
AMPO	Association of Metropolitan Planning Organizations
APA	American Planning Association
APTA	American Public Transit Association
APWA	American Public Works Association
ARRA	American Recovery and Reinvestment Act
ASCE	American Society of Civil Engineers
AVO	Average Vehicle Occupancy
AVR	Average Vehicle Ridership
AWT	Average Weekday Traffic
B/C	Benefit Cost Ratio
BCC	Board of County Commissioners
BLM	Bureau of Land Management
BMS	Bridge Management System
BOA	Board of Adjustments
BOE	Basis of Estimate
BRP	Bridge Replacement Program (State)
BRRP	Bridge Repair and Rehabilitation Program (State)
BRT	Bus Rapid Transit
BTS	Bureau of Transportation Statistics

ACRONYM	NAME / TITLE
CAAA	Clean Air Act Amendments of 1990
CAC	Community Advisory Committee
CAD	Computer Aided Drafting
CADD	Computer Aided Drafting and Design
CBD	Central Business District
CCI	Construction Cost Index
CCI	Community Characteristics Inventory
CDC	Center for Disease Control
CEI	Construction Engineering Inspection
CEMO	Central Environmental Management Office (State)
CE-NEPA	Categorical Exclusion
CFMPOA	Central Florida MPO Alliance
CFR	Code of Federal Regulations
CIE	Capital Improvement Element
CIGP	County Incentive Grant Program
CIP	Capital Improvement Program
CLC	Community Liaison Coordinator
CMAQ	Congestion Management and Air Quality
CMP	Corridor (or Congestion) Management Plan
CMS	Congestion Management System
CMS	Concurrency Management System
CNG	Compressed Natural Gas
CNU	Congress of New Urbanism
CO	Carbon Monoxide
COOP	Continuity Of Operations Plan
CO <sub>2</sub>	Carbon Dioxide
CO <sub>2</sub> E	Carbon Dioxide Equivalent
CTC	Community Transportation Coordinator
CTD	Commission for Transportation Disadvantage
CTST	Community Traffic Safety Team
CUTR	Center for Urban Transportation Research
dB	Decibels

ACRONYM	NAME / TITLE
DBE	Disadvantaged Business Enterprise
DDHV	Directional Design Hour Volume
DDR	District Dedicated Revenue
DEIS	Draft Environmental Impact Statement
DEO	Department of Economic Opportunity (FL)
DHV	Design Hour Volume
DIS	State funds for projects on the Strategic Intermodal System
DNR	Department of Natural Resources
DNS	Determination of Non-significance
DOT	Department of Transportation
DRI	Development of Regional Impact
DVMT	Daily Vehicle Miles Traveled
EA	Environmental Assessment
EAR	Evaluation and Appraisal Report
EB	Eastbound
ECFRPC	East Central Florida Regional Planning Council
EEO	Equal Opportunity Employer
EIS	Environmental Impact Statement
EOC	Emergency Operations Center
EPA	Environmental Protection Agency (Federal)
ERT	Emergency Response Team
ESA	Endanger Species Act
ETDM	Efficient Transportation Decision Making
F.S.	Florida Statute
FAA	Federal Aviation Administration
FAPA	Florida Chapter of the American Planning Association
FARS	Fatality Analysis Reporting System
FAST ACT	Fixing Americas Surface Transportation Act
FBT	Floridians for Better Transportation
FC	Functional Classification
FDEP	Florida Department of Environmental Protection
FDOT	Florida Department of Transportation

ACRONYM	NAME / TITLE
FEA	Final Environmental Assessment
FEIS	Final Environmental Impact Statement
FEMA	Federal Emergency Management Agency
FGDL	Florida Geographical Data Library
FHWA	Federal Highway Administration
FIHS	Florida Interstate Highway System
FLUAM	Future Land Use Allocation Model
FMCSA	Federal Motor Carrier Safety Administration
FONSI	Finding of No Significant Impact
FRA	Federal Railroad Administration
FSUTMS	Florida Standard Urban Transportation Modeling Structure
FTA	Federal Transit Administration
FTC	Florida Transportation Commission
FTE	Full Time Equivalent
FTE	Florida Turnpike Enterprise
FTP	Florida Transportation Plan
FY	Fiscal Year
4-R	Highway Reconstruction, Resurfacing, Restoration, and Rehabilitation
GHGs	Greenhouse Gases
GIS	Geographic Information Systems
GPC	General Planning Consultant
GPS	Global Positioning System
GVW	Gross Vehicle Weight
HCM	Highway Capacity Manual
HOT	High Occupancy Toll Lanes
HOV	High Occupancy Vehicles
HSR	High Speed Rail
HTF	Highway Trust Fund (U.S.)
ICE	Intergovernmental Coordination Element
ILA	Inter Local Agreements
INFRA	Infrastructure for Rebuilding America
ISTEA	Intermodal Surface Transportation Efficiency Act

ACRONYM	NAME / TITLE
IT	Information Technology
ITE	Institute of Traffic Engineers
ITS	Intelligent Transportation System
JPA	Joint Participation Agreement
LAP	Local Agency Program
LCB	Local Coordinating Board
LEP	Limited English Proficiency
LGCP	Local Government Comprehensive Plan
LMY	Lane Mile Years
LNG	Liquefied Natural Gas
LOPP	List of Priority Projects
LOS	Level of Service
LRT	Light Rail Transit
LRTTP	Long Range Transportation Plan
LSMPO	Lake~Sumter MPO
LU	Land Use
M&O	Management and Operations
MAP-21	Moving Ahead for Progress in the 21st Century
MBE	Minority Business Enterprise
MIS	Management Information Systems
MMTD	Multimodal Transportation District
MOA	Memoranda of Agreement
MOU	Memorandum of Understanding
MP	Milepost
MPO	Metropolitan Planning Organization
MPOAC	Metropolitan Planning Organization Advisory Council
MSTU	Municipal Services Tax Unit
MUTCD	Manual on Uniform Traffic Control Devices
MWBE	Minority and Women's Business Enterprise
MYSPMP	Multi-Year Strategy and Program Management Plan
NAAQS	National Ambient Air Quality Standards
NB	Northbound



ACRONYM	NAME / TITLE
NCHRP	National Cooperative Highway Research Program
NEPA	National Environmental Policy Act
NEPA	National Environmental Policy Act of 1969
NGS	United States National Geodetic Survey
NHPA	National Historical Preservation Act
NHPP	National Highway Performance Program
NHS	National Highway System
NHTSA	National Highway Traffic Safety Administration
NOAA	National Oceanographic and Atmospheric Administration
NOX	Nitrogen Oxides
NPRM	Notice of Proposed Rule Making
NPS	National Park Service
NRHP	National Register of Historic Places
NTSB	National Transportation Safety Board
O&M	Operations and Maintenance
O-D	Origin-Destination (survey or zone)
OEO	Office of Equal Opportunity
OMB	Office of Management and Budget
OSHA	Occupational Safety and Health Administration
PCI	Pavement Condition Index
PD&E	Project Development & Environmental Study
PE	Professional Engineer
PE	Preliminary Engineering
PEA	Planning Emphasis Areas
PHF	Peak Hour Factor
PI	Public Involvement
PIO	Public Information Office (or Officer)
PIP	Public Involvement Plan
PL	Category of FHWA funds for MPO planning uses
PM	Project Manager
PM	Particulate Matter
PMS	Pavement Management System

ACRONYM	NAME / TITLE
PTMS	Public Transportation Facilities and Equipment Management System
PUD	Planned Unit Development
QA/QC	Quality Assurance / Quality Control
RCI	Roadway Characteristics Inventory
RFP	Request for Proposal
RFQ	Request for Qualifications
ROW	Right of Way
RPC	Regional Planning Council
RPM	Revolutions per Minute
RR	Railroad
RRR (3R)	Resurfacing, Restoration, and Rehabilitation
RTA	Regional Transit Authority
SAFETEA-LU	Safe, Accountable, Flexible, Efficient Transportation Equity Act – A Legacy for Users
SB	Southbound
SBE	Small Business Enterprise
SCE	Sociocultural Effects
SCOP	Small County Outreach Program
SD	Structurally Deficient
Section 5305(d)	Category of FTA funds for MPO planning use
SEIS	Supplemental Environmental Impact Statement
SEPA	State Environmental Policy Act
SIB	State Infrastructure Bank
SIS	Strategic Intermodal System
SOV	Single Occupancy Vehicle
SR	State Road
SRPP	Strategic Regional Policy Plan
STIP	State Transportation Improvement Program
STP	Surface Transportation Program
TAC	Technical Advisory Committee
TCEA	Transportation Concurrency Exception Area
TCMA	Transportation Concurrency Management Area

ACRONYM	NAME / TITLE
TD	Transportation Disadvantaged
TDCB	Transportation Disadvantaged Coordinating Board
TDM	Transportation Demand Management
TDM	Travel Demand Management
TDP	Transit Development Plan
TDSP	Transportation Disadvantaged Service Plan
TE	Transportation Enhancements
TEA-21	Transportation Equity Act for the 21st Century of 1998
TIGER	Transportation Investment Generating Economic Recovery
TIP	Transportation Improvement Program
TMA	Transportation Management Area
TMS	Transportation Management System
TOP	Transit Operations Plan
TPO	Transportation Planning Organizations (synonym to MPO)
TRB	Transportation Research Board
TRIP	Transportation Regional Incentive Program
TTE	Test Training and Exercises
UA	Urbanized Area
UCF	University of Central Florida
UPWP	Unified Planning Work Program
US	United States (route)
USC	United States Code
USDOE	United States Department of Energy
USDOT	United States Department of Transportation
USFS	United States Forest Service
USFWS	United States Fish and Wildlife Service
USGS	United States Geological Survey
VHT	Vehicle Hours Traveled
VMS	Variable Message Sign
VMT	Vehicle Miles Traveled
VOC	Volatile Organic Compounds
VPH	Vehicles Per Hour

ACRONYM	NAME / TITLE
WAGES	Work and Gain Economic Self Sufficiency
WB	Westbound
WBE	Women's Business Enterprise
YTD	Year to Date



**Florida Department of Transportation**

RON DESANTIS  
GOVERNOR

605 Suwannee Street  
Tallahassee, FL 32399-0450

KEVIN J. THIBAUT, P.E.  
SECRETARY

December 18, 2019

Michael Woods  
Executive Director, Lake-Sumter MPO  
225 W. Guava Street, Suite 211,  
Lady Lake, FL 32159

RE: Request for Amendment to Lake-Sumter MPO's FY 2019/20 to FY 2023/24 TIP

Dear Mr. Woods,

The Florida Department of Transportation (FDOT), Florida's Turnpike Enterprise (FTE) requests the following amendment to the Lake-Sumter MPO's Fiscal Year 2019/20 to Fiscal Year 2023/24 Transportation Improvement Program (TIP). This request is being made in conjunction with the changes to FDOT's Work Program.

**5-Year Summary of Projects by Funding Category**

**FM#435787-1 WIDEN TPK- US 27 TO CR 470 (MP 289.3 - 297.3) – Add Lanes and Reconstruct – Sponsor: FTE**

**Current TIP Status:**

Project is funded for Fiscal Years 2019/20 and 2021/2022.

**Current TIP:**

Location	Phase	Original Funding Type	Original Amount	Fiscal Year
SR 91, from US 27 to CR 470	PE	PKYI	\$6,999,974	2019/20
			\$1,290,000	2020/21
	PE	PKED	\$10,412,203	2019/20
	ENV	PKYI	\$1,060,000	2020/21
	ROW	PKYI	\$4,456,900	2021/22
		<b>TOTAL:</b>	<b>\$24,219,077</b>	

**Proposed Amendment:**

Location	Phase	Proposed Funding Type	Proposed Amount	Fiscal Year
SR 91, from US 27 to CR 470	PE	PKYI	\$0	2019/20
			\$0	2020/21
	PE	PKED	\$0	2019/20
	ENV	PKYI	\$0	2020/21
	ROW	PKYI	\$0	2021/22
		<b>TOTAL:</b>	<b>\$0</b>	

**Explanation:** This project is a widening of the Turnpike Mainline (SR 91) from US 27 to CR 470 (FM#435787-1). Originally, it was funded from Fiscal Year 2020-Fiscal Year 2022 for Design, Environmental, and Right of Way phases in the FY 2019/20 to FY 2023/24 Lake-Sumter MPO TIP.

Subsequent changes to the FDOT Work Program, as a result of priorities being reevaluated, moved funding outside of the Adopted FDOT Five-Year Work Program. This TIP amendment request will result in consistent funding representation between the Lake-Sumter MPO TIP and the Adopted FDOT Work Program.

Thank you for your assistance in this matter. If you have any questions, please call me at (407) 264-3494.

Sincerely,

A handwritten signature in blue ink that reads "Siao Si Fine".

Siao Si Fine  
MPO Liaison

cc: Tim George, Turnpike Work Program Administrator  
Carol Scott, Turnpike Planning Manager



# Lake County

## Figure L-8: Congested Corridors

### LEGEND

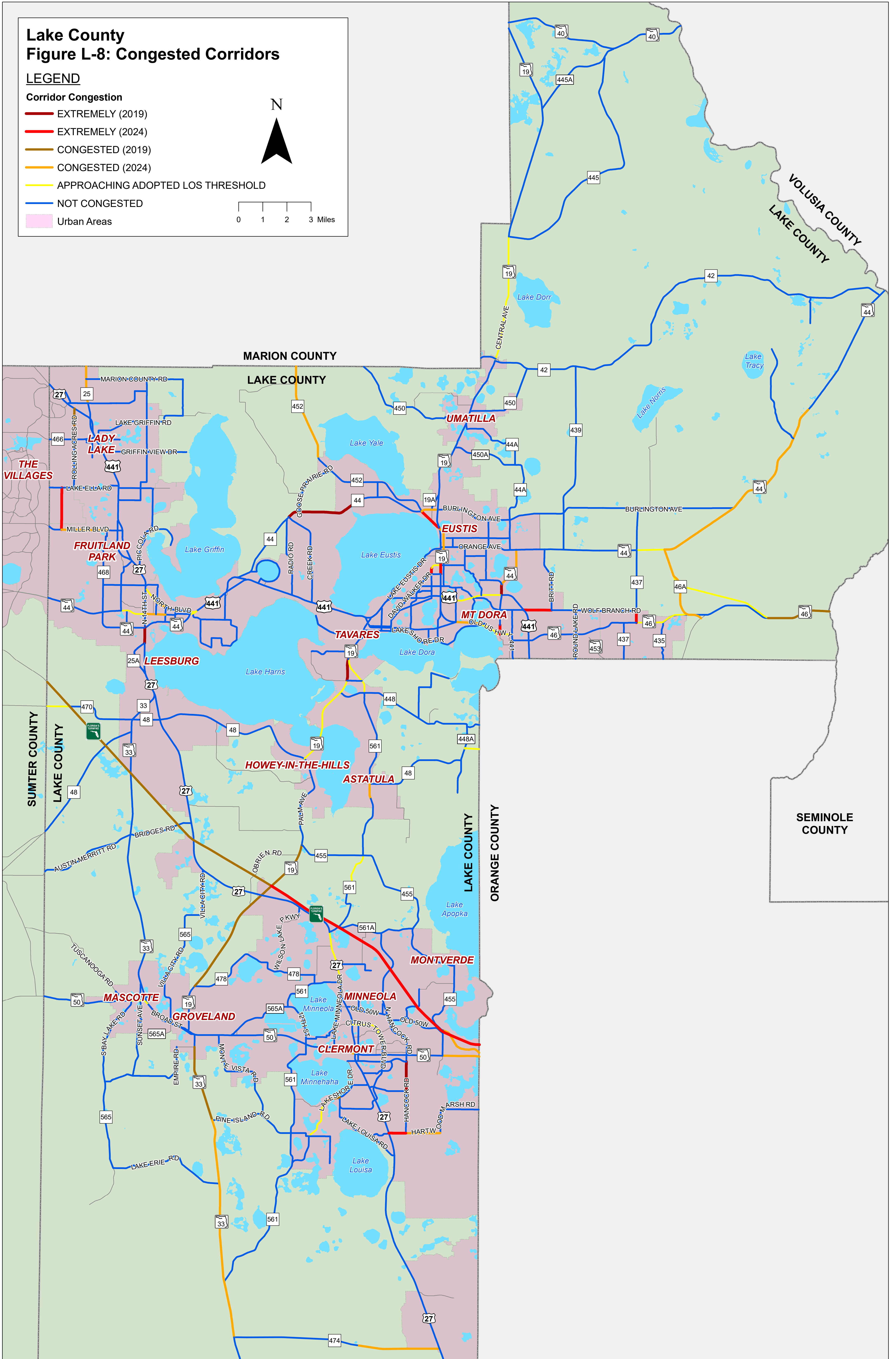
#### Corridor Congestion

- EXTREMELY (2019)
- EXTREMELY (2024)
- CONGESTED (2019)
- CONGESTED (2024)
- APPROACHING ADOPTED LOS THRESHOLD
- NOT CONGESTED
- Urban Areas

N



0 1 2 3 Miles





Lake County CMP Database

SEGMENT ID	COUNTY STATION	FOOT STATION	DATA SOURCE	SPEED LIMIT	SEGMENT LENGTH (M)	ROAD NAME	FROM	TO	LANES (2019)	LANES (2024)	URBAN / RURAL	DIVIDED / UNDIVIDED	MAINTAINING AGENCY	JURISDICTION	ADOPTED LOS STANDARD	DAILY SERVICE VOLUME	2019 AADT	2019 DAILY VIC	2019 DAILY LOS	PEAK HOUR DIRECTIONAL SERVICE VOLUME	2019 PEAK HOUR NB/EV SERVICE VOLUME	2019 PEAK HOUR SB/WV SERVICE VOLUME	2019 PEAK HOUR VIC	2019 PEAK HOUR LOS	GROWTH RATE	DAILY SERVICE VOLUME (2024)	2024 AADT	2024 DAILY VIC	2024 DAILY LOS	PEAK HOUR DIRECTIONAL SERVICE VOLUME (2024)	2024 PEAK HOUR NB/EV SERVICE VOLUME	2024 PEAK HOUR SB/WV SERVICE VOLUME	2024 PEAK HOUR VIC	2024 PEAK HOUR LOS			
10	81	117030	County	30	1.37	ABRAMS ROAD	SR 44	WAYCROSS AVENUE	2	2	URBAN	UNDIVIDED	COUNTY	CITY OF EUSTIS	D	14,060	5,145	0.37	C	710	267	218	0.38	C	4.00%	14,060	6,260	0.45	C	710	325	285	0.46	C			
20	71		County	30	0.67	ANDERSON HILL ROAD	LAKE SHORE DRIVE	US 27	2	2	URBAN	UNDIVIDED	COUNTY	UNINCORPORATED LAKE COUNTY	D	10,360	1,870	0.18	C	530	127	56	0.24	C	2.00%	10,360	2,065	0.20	C	530	140	62	0.26	C			
30	257		County	30	0.38	ARDICE AVENUE	KURT STREET	SR 19	2	2	URBAN	DIVIDED	CITY OF EUSTIS	CITY OF EUSTIS	D	13,990	5,162	0.37	C	710	230	275	0.39	C	1.00%	13,990	5,425	0.39	C	710	242	289	0.41	C			
50	20		County	25	0.63	ARLINGTON AVENUE	W LADY LAKE BOULEVARD	SOUTH TERMINI	2	2	URBAN	UNDIVIDED	COUNTY	TOWN OF LADY LAKE	D	10,360	2,122	0.15	C	530	59	66	0.18	C	1.50%	10,360	1,965	0.15	C	530	72	22	0.23	C			
50	20		County	40	1.89	AUSTIN MERRITT ROAD	YOUTH CAMP ROAD	CR 33	2	2	RURAL	UNDIVIDED	COUNTY	UNINCORPORATED LAKE COUNTY	C	8,030	1,476	0.16	C	470	100	41	0.21	C	8.75%	8,030	2,245	0.25	C	470	8,030	2,52	0.32	C			
60	263	117004	County	25	1.74	BATES AVENUE	N CENTER STREET	CR 44 / DELAND ROAD	2	2	URBAN	UNDIVIDED	CITY OF EUSTIS	CITY OF EUSTIS	D	10,360	1,320	0.13	C	530	54	67	0.13	C	9.25%	10,360	2,054	0.20	C	530	84	104	0.20	C			
70	262		County	40	0.88	BATES AVENUE	ESTES ROAD	2	2	URBAN	UNDIVIDED	COUNTY	UNINCORPORATED LAKE COUNTY	D	16,820	1,785	0.11	C	840	137	149	0.18	C	3.00%	16,820	2,069	0.12	C	840	159	173	0.21	C				
80	254		County	35	0.82	BAY ROAD	BAY ROAD / CR 19A	OLD US 441 / CR 500A	2	2	URBAN	UNDIVIDED	COUNTY	UNINCORPORATED LAKE COUNTY	D	10,360	3,015	0.29	C	530	125	144	0.27	C	2.00%	10,360	3,329	0.32	C	530	138	159	0.30	C			
90	253	117006	County	35	0.55	BAY ROAD	OLD US 441 / CR 500A	CR 452 / LAKESHORE DRIVE	2	2	URBAN	UNDIVIDED	COUNTY	UNINCORPORATED LAKE COUNTY	D	10,360	1,631	0.16	C	530	86	59	0.16	C	1.00%	10,360	1,714	0.17	C	530	90	62	0.17	C			
100	196		County	35	1.64	BLACKSTILL LAKE ROAD	FOSGATE ROAD	CR 50	2	2	URBAN	UNDIVIDED	COUNTY	CITY OF CLERMONT	D	14,060	5,031	0.36	C	710	215	223	0.31	C	8.00%	14,060	7,392	0.53	D	710	316	328	0.46	C			
110	21		County	40	2.64	BRIDGES ROAD	US 27	2	2	RURAL	UNDIVIDED	COUNTY	UNINCORPORATED LAKE COUNTY	C	7,560	1,485	0.20	B	390	99	34	0.25	B	4.75%	7,560	1,873	0.25	B	390	125	43	0.32	B				
120	84	117016	County	45	1.16	BRITT ROAD	SR 44	HORSE RANCH ROAD	2	2	URBAN	UNDIVIDED	COUNTY	CITY OF MOUNT DORA	D	12,390	4,041	0.33	C	620	122	254	0.41	C	9.25%	12,390	6,289	0.51	C	620	190	395	0.64	C			
130	84		ADJACENT	45	1.47	BRITT ROAD	HORSE RANCH ROAD	WOLF BRANCH ROAD	2	2	URBAN	UNDIVIDED	COUNTY	CITY OF MOUNT DORA	D	12,390	4,041	0.33	C	620	122	254	0.41	C	9.25%	12,390	6,289	0.51	C	620	190	395	0.64	C			
140	241		County	35	0.14	C.R. 19A (DORA AVENUE)	LAKE DORA DRIVE	CR 500A / OLD 441	2	2	URBAN	UNDIVIDED	COUNTY	CITY OF TAVARES	D	10,360	1,628	0.16	C	530	67	100	0.19	C	1.50%	10,360	1,754	0.17	C	530	72	108	0.20	C			
150	50		County	35	1.35	C.R. 19A (DORA AVENUE)	C.R. 500A / OLD 441	DAVID WALKER ROAD	2	2	URBAN	UNDIVIDED	COUNTY	CITY OF TAVARES	D	14,060	5,011	0.36	C	710	236	218	0.33	C	1.00%	14,060	5,267	0.37	C	710	248	229	0.35	C			
160	104		County	20	1.00	C.R. 19A (DORA AVENUE)	DAVID WALKER ROAD	US 441	2	2	URBAN	UNDIVIDED	COUNTY	CITY OF TAVARES	D	14,060	3,858	0.27	C	710	156	177	0.25	C	1.00%	14,060	4,055	0.29	C	710	163	186	0.26	C			
170	0		NO COUNT	35	0.48	C.R. 19A	CR 44	CR 44	2	2	URBAN	UNDIVIDED	COUNTY	CITY OF EUSTIS	D	14,060												14,060									
180	114		County	45	0.58	C.R. 19A	CR 44	SR 19	2	2	URBAN	UNDIVIDED	COUNTY	UNINCORPORATED LAKE COUNTY	D	12,390	2,872	0.23	C	620	139	110	0.22	C	1.75%	12,390	3,132	0.25	C	620	152	120	0.25	C			
190	105		County	40	0.53	C.R. 19A	US 441	BAY ROAD	2	2	URBAN	UNDIVIDED	COUNTY	EUSTISMOUNT DORA	D	16,820	14,469	0.86	C	840	642	577	0.78	C	1.00%	16,820	15,207	0.90	C	840	675	606	0.80	C			
200	258		County	45	0.93	C.R. 19A	BAY ROAD / CR 19A	CR 44C / CR 500A	2	2	URBAN	UNDIVIDED	COUNTY	CITY OF MOUNT DORA	D	16,820	8,328	0.50	C	840	328	371	0.44	C	1.00%	16,820	8,753	0.52	C	840	345	390	0.46	C			
210	1		County	35	1.53	CR 25	MARION COUNTY LINE	GRIFFIN AVENUE	2	2	URBAN	UNDIVIDED	COUNTY	UNINCORPORATED LAKE COUNTY	D	14,060	10,696	0.76	D	710	693	258	0.98	D	3.25%	14,060	12,551	0.89	D	710	813	303	1.15	F			
220	159	117023	County	35	1.27	CR 25	GRIFFIN AVENUE	US 27 / US 441	2	2	URBAN	UNDIVIDED	COUNTY	TOWN OF LADY LAKE	D	14,060	9,630	0.68	D	710	370	462	0.65	D	2.75%	14,060	11,029	0.78	D	710	424	529	0.75	D			
230	116		County	30	0.43	C.R. 25A	US 27/US 441	CR 466A	2	2	URBAN	UNDIVIDED	COUNTY	FRUITLAND PARK	D	10,360	7,541	0.73	D	530	361	346	0.68	D	1.00%	10,360	7,926	0.77	D	530	379	364	0.72	D			
240	189		County	30	1.50	C.R. 25A	CR 466A	US 27/US 441	2	2	URBAN	UNDIVIDED	COUNTY	FRUITLAND PARK	D	10,360	4,760	0.46	C	530	194	255	0.48	C	1.00%	10,360	5,024	0.48	C	530	204	288	0.51	D			
250	118	117037	County	45	1.65	CR 25A	US 27 (NORTH)	US 27 (SOUTH)	2	2	URBAN	UNDIVIDED	COUNTY	CITY OF LEEBSBURG	D	12,390	384	0.03	C	620	15	17	0.03	C	1.75%	12,390	419	0.03	C	620	16	19	0.03	C			
260	132		County	50	1.49	SR 33 / CR 33	US 27	CR 33 / CR 470	2	2	URBAN	UNDIVIDED	STATE	UNINCORPORATED LAKE COUNTY	D	18,590	9,402	0.51	C	920	427	301	0.46	C	3.75%	18,590	11,302	0.61	C	920	513	362	0.56	C			
270	133		County	45	0.52	SR 33 / SR 48 / CR 33 / CR 48	CR 48	CR 48	2	2	URBAN	UNDIVIDED	STATE	UNINCORPORATED LAKE COUNTY	D	17,700	8,936	0.50	C	880	308	443	0.50	C	4.50%	17,700	11,136	0.63	C	880	384	552	0.63	C			
280	19		County	55	4.27	CR 33	CR 48	BRIDGES ROAD	2	2	URBAN	UNDIVIDED	COUNTY	UNINCORPORATED LAKE COUNTY	D	21,780	4,200	0.19	B	1,070	229	130	0.21	B	8.50%	21,780	6,915	0.29	B	1,070	344	195	0.32	B			
290	24		ADJACENT	35	5.61	CR 33	BRIDGES ROAD	PEBBLE ROCK ROAD	2	2	RURAL	UNDIVIDED	COUNTY	UNINCORPORATED LAKE COUNTY	C	7,560	5,931	0.79	C	390	241	223	0.62	C	5.25%	7,560	7,660	1.01	D	390	311	288	0.80	C			
300	24		County	35	1.65	SR 33 / CR 33	SR 50	PEBBLE ROCK ROAD	2	2	URBAN	UNDIVIDED	STATE	CITY OF MASCOTTE	C	15,540	5,931	0.38	C	790	241	223	0.31	C	5.25%	15,540	7,660	0.49	C	790	311	288	0.39	C			
310	74		County	45	0.64	CR 42	MARION COUNTY LINE	SR 19	2	2	URBAN	UNDIVIDED	COUNTY	UNINCORPORATED LAKE COUNTY	D	15,930	4,866	0.31	C	790	231	192	0.29	C	1.00%	15,930	6,285	0.39	C	790	298	248	0.38	C			
320	75		County	45	1.41	CR 42	SR 19	CR 490	2	2	RURAL	UNDIVIDED	COUNTY	UNINCORPORATED LAKE COUNTY	C	9,030	4,388	0.49	C	470	175	207	0.44	C	7.25%	9,030	6,227	0.69	C	470	248	294	0.63	C			
330	106		County	55	2.05	CR 42	CR 450	CR 439	2	2	RURAL	UNDIVIDED	COUNTY	UNINCORPORATED LAKE COUNTY	C	7,560	5,378	0.71	C	390	220	242	0.62	C	6.25%	7,560	7,282	0.96	C	390	298	328	0.84	C			
340	91		ADJACENT	40	3.58	CR 42	CR 439	CENTRAL AVENUE	2	2	RURAL	UNDIVIDED	COUNTY	UNINCORPORATED LAKE COUNTY	C	7,560	3,503	0.46	B	390	162	188	0.48	B	7.00%	7,560	4,913	0.65	C	390	227	264	0.68	C			
350	91		County	40	4.93	CR 42	CENTRAL AVENUE	PALMETTO STREET	2	2	RURAL	UNDIVIDED	COUNTY	UNINCORPORATED LAKE COUNTY	C	14,760	3,503	0.24	B	770	162	188	0.24	B	7.00%	14,760	4,913	0.33	B	770	227	264	0.34	B			
360	97		ADJACENT	55	3.60	CR 42	PALMETTO STREET	LAKE MACK DRIVE	2	2	RURAL	UNDIVIDED	COUNTY	UNINCORPORATED LAKE COUNTY	C	14,760	4,726	0.32	B	770	150	292	0.38	B	4.25%	14,760	5,819	0.39	B	770	185	360	0.47	B			
370	97		County	55	3.06	CR 42	LAKE MACK DRIVE	SR 44	2	2	RURAL	UNDIVIDED	COUNTY	UNINCORPORATED LAKE COUNTY	C	14,760	4,726	0.32	B	770	150	292	0.38	B	4.25%	14,760	5,819	0.39	B	770	185	360	0.47	B			
380	182																																				



Lake County CMP Database

SEGMENT ID	COUNTY STATION	FOOT STATION	DATA SOURCE	SPEED LIMIT	SEGMENT LENGTH (MI)	ROAD NAME	FROM	TO	LANES (2019)	LANES (2024)	URBAN / RURAL	DIVIDED / UNDIVIDED	MAINTAINING AGENCY	JURISDICTION	ADOPTED LOS STANDARD	DAILY SERVICE VOLUME	2019 AADT	2019 DAILY VIC	2019 DAILY LOS	PEAK HOUR DIRECTIONAL SERVICE VOLUME	2019 PEAK HOUR NBWB VOLUME	2019 PEAK HOUR SBWB VOLUME	2019 PEAK HOUR VIC	2019 PEAK HOUR LOS	GROWTH RATE	DAILY SERVICE VOLUME (2024)	2024 AADT	2024 DAILY VIC	2024 DAILY LOS	PEAK HOUR DIRECTIONAL SERVICE VOLUME (2024)	2024 PEAK HOUR NBWB VOLUME	2024 PEAK HOUR SBWB VOLUME	2024 PEAK HOUR VIC	2024 PEAK HOUR LOS
1155	204		County	55	2.39	C.R. 470	FLORIDA TURNPIKE	BAY AVENUE	2	2	RURAL	UNDIVIDED	COUNTY	UNINCORPORATED LAKE COUNTY	D	12,870	7,451	0.58	C	670	342	273	0.51	C	2.75%	12,870	8,533	0.66	D	670	392	313	0.59	D
1160	204		ADJACENT	55	0.54	C.R. 470	BAY AVENUE	CR 33	2	2	URBAN	UNDIVIDED	COUNTY	UNINCORPORATED LAKE COUNTY	D	12,390	7,451	0.60	C	620	342	273	0.55	C	2.75%	12,390	8,533	0.69	C	620	392	313	0.63	C
1170	173		County	35	2.99	C.R. 473	CR 44	FOUNTAIN LAKE BOULEVARD	2	2	URBAN	UNDIVIDED	COUNTY	UNINCORPORATED LAKE COUNTY	D	14,060	7,042	0.50	D	710	303	287	0.43	C	6.00%	14,060	9,424	0.67	D	710	405	384	0.57	D
1180	37		County	35	1.03	C.R. 473	FOUNTAIN LAKE BOULEVARD	US 44	4	4	URBAN	DIVIDED	COUNTY	UNINCORPORATED LAKE COUNTY	D	35,820	13,629	0.28	C	2,800	721	543	0.40	C	6.00%	35,820	15,900	0.24	C	1,800	826	629	0.46	C
1190	41		County	55	5.21	C.R. 474	SR 33	GREEN SWAMP ROAD	2	2	RURAL	UNDIVIDED	COUNTY	UNINCORPORATED LAKE COUNTY	C	7,560	4,422	0.72	C	390	196	103	0.50	C	6.75%	7,560	5,845	0.77	C	390	259	158	0.66	C
1200	156		County	55	3.35	C.R. 474	US 27	GREEN SWAMP ROAD	2	2	RURAL	UNDIVIDED	COUNTY	UNINCORPORATED LAKE COUNTY	C	7,560	6,183	0.82	C	390	145	271	0.69	C	13.25%	7,560	11,518	1.52	D	390	270	505	1.29	D
1210	135		County	45	5.99	C.R. 478	SR 19	JAMRLY ROAD	2	2	URBAN	UNDIVIDED	COUNTY	CITY OF GROVELAND	D	21,780	1,941	0.08	B	1,070	66	105	0.10	B	5.25%	21,780	2,119	0.10	B	1,070	85	136	0.13	B
1220	18		County	55	3.17	C.R. 48	SUMTER COUNTY LINE	CLEARWATER LAKE RD	2	2	URBAN	UNDIVIDED	COUNTY	CITY OF LEECSBURG	D	21,780	2,849	0.13	B	1,070	92	173	0.16	B	5.00%	21,780	3,636	0.17	B	1,070	117	221	0.21	B
1225	291		County	55	2.41	C.R. 48	CR 33	CLEARWATER LAKE RD	2	2	RURAL	UNDIVIDED	COUNTY	CITY OF LEECSBURG	C	7,560	2,730	0.36	B	390	92	158	0.41	B	1.00%	7,560	2,869	0.38	B	390	97	166	0.43	B
1230	17		County	45	0.46	C.R. 48	CR 33	HAYWOOD WORM FARM RD	2	2	URBAN	UNDIVIDED	COUNTY	UNINCORPORATED LAKE COUNTY	D	15,930	7,814	0.49	C	790	304	362	0.46	C	2.25%	15,930	8,734	0.55	C	790	340	405	0.51	C
1235	153		County	45	0.68	C.R. 48	US 27	HAYWOOD WORM FARM RD	2	2	URBAN	UNDIVIDED	COUNTY	UNINCORPORATED LAKE COUNTY	D	16,820	9,128	0.54	C	840	397	376	0.47	C	4.00%	16,820	11,106	0.66	C	840	483	457	0.58	C
1240	16		County	40	4.89	C.R. 48	US 27	LIME AVENUE	2	2	URBAN	UNDIVIDED	COUNTY	UNINCORPORATED LAKE COUNTY	D	21,780	9,824	0.44	C	1,070	409	396	0.38	C	1.00%	21,780	10,115	0.46	C	1,070	430	416	0.40	C
1250	34		County	40	2.04	C.R. 48	LIME AVENUE	LIME AVENUE	2	2	URBAN	UNDIVIDED	COUNTY	HOWEY-IN-THE-HILLS	D	21,780	8,572	0.39	C	1,070	321	404	0.38	C	3.00%	21,780	9,937	0.46	C	1,070	372	468	0.44	C
1260	59		County	40	1.14	C.R. 48	CR 561	RANCH ROAD	2	2	URBAN	UNDIVIDED	COUNTY	TOWN OF ASTATULA	D	16,820	5,764	0.34	C	840	283	244	0.34	C	1.00%	16,820	6,058	0.36	C	840	297	256	0.35	C
1270	59		ADJACENT	40	3.17	C.R. 48	RANCH ROAD	CR 48A	2	2	RURAL	UNDIVIDED	COUNTY	UNINCORPORATED LAKE COUNTY	D	7,560	5,764	0.76	C	390	283	244	0.73	C	1.00%	7,560	6,058	0.80	C	390	297	256	0.76	C
1280	275		County	30	0.71	C.R. 50 (SUNSET AVENUE)	CR 33	CITY OF MASCOTTE	2	2	URBAN	UNDIVIDED	COUNTY	CITY OF MASCOTTE	D	10,360	1,443	0.14	C	530	100	57	0.19	C	4.25%	10,360	1,777	0.17	C	530	123	70	0.23	C
1290	58		County	45	1.74	C.R. 50	US 27	N HANCOCK ROAD	2	2	URBAN	UNDIVIDED	COUNTY	CITY OF MINNEOLA	D	16,820	7,953	0.47	C	840	418	277	0.50	C	1.00%	16,820	8,359	0.50	C	840	339	291	0.52	C
1300	158		County	45	2.47	C.R. 50	CR 455	N HANCOCK ROAD	2	2	URBAN	UNDIVIDED	COUNTY	UNINCORPORATED LAKE COUNTY	D	21,780	6,509	0.30	B	1,070	168	493	0.46	C	1.75%	21,780	7,099	0.33	B	1,070	183	538	0.50	C
1310	69		County	45	1.92	C.R. 50	CR 455	ORANGE COUNTY LINE	2	2	URBAN	UNDIVIDED	COUNTY	UNINCORPORATED LAKE COUNTY	D	16,820	6,933	0.41	C	840	165	611	0.73	C	7.25%	16,820	9,838	0.58	C	840	234	867	1.03	F
1320	53		County	35	1.08	C.R. 500A/OLD 441	SR 19	DORA AVENUE	2	2	URBAN	DIVIDED	COUNTY	CITY OF TAVARES	D	8,390	4,593	0.55	D	870	355	-	0.41	C	6.75%	8,390	6,367	0.76	D	870	492	-	0.57	D
1325	53		County	35	1.08	C.R. 500A/OLD 441	DORA AVENUE	SR 19	2	2	URBAN	DIVIDED	COUNTY	CITY OF TAVARES	D	8,390	4,593	0.55	D	870	-	453	0.52	D	6.75%	8,390	6,367	0.76	D	870	-	628	0.72	D
1330	125	115084	County	45	1.94	C.R. 500A/OLD 441/ALFRED ST	DORA AVENUE	BRAY ROAD	2	2	URBAN	UNDIVIDED	COUNTY	CITY OF TAVARES	D	16,820	9,214	0.55	C	840	449	389	0.53	C	5.00%	16,820	12,042	0.72	C	840	587	508	0.70	C
1340	124		County	35	0.79	C.R. 500A/OLD 441	BAY ROAD	CR 44C / EUDORA AVENUE	2	2	URBAN	UNDIVIDED	COUNTY	CITY OF MOUNT DORA	D	10,360	8,390	0.81	D	530	394	341	0.74	D	2.75%	10,360	9,609	0.93	D	530	451	391	0.85	D
1350	123		County	35	1.06	C.R. 500A/OLD 441	CR 44C / EUDORA DRIVE	LAKESHORE DRIVE	2	2	URBAN	DIVIDED	COUNTY	CITY OF MOUNT DORA	D	14,760	15,132	1.03	E	730	598	699	0.93	D	4.25%	14,760	18,833	1.26	F	730	736	861	1.15	F
1360	268		County	35	0.79	C.R. 500A/OLD 441	LAKESHORE DRIVE	5TH AVENUE	2	2	URBAN	UNDIVIDED	COUNTY	CITY OF MOUNT DORA	D	10,360	10,172	0.98	D	530	486	425	0.92	D	1.25%	10,360	10,824	1.04	E	530	517	452	0.98	D
1370	268		ADJACENT	25	0.63	C.R. 500A/ 5TH AVENUE	OLD 441	N HIGHLAND STREET	2	2	URBAN	UNDIVIDED	COUNTY	CITY OF MOUNT DORA	D	10,360	10,172	0.98	D	530	486	425	0.92	D	1.25%	10,360	10,824	1.04	E	530	517	452	0.98	D
1380	269		ADJACENT	30	0.26	C.R. 500A (HIGH-LAND STREET)	5TH AVENUE	SR 46	2	2	URBAN	UNDIVIDED	COUNTY	CITY OF MOUNT DORA	D	13,320	2,744	0.21	C	680	121	110	0.18	C	1.00%	13,320	2,884	0.22	C	680	127	116	0.19	C
1390	90	115004	County	35	0.75	C.R. 500A/OLD 441	SR 46	ORANGE COUNTY LINE	2	2	URBAN	UNDIVIDED	COUNTY	CITY OF MOUNT DORA	D	10,360	4,957	0.48	C	530	225	228	0.43	C	1.00%	10,360	5,210	0.50	D	530	239	240	0.45	C
1400	58		County	45	1.62	C.R. 561	SR 19	CR 481	2	2	URBAN	UNDIVIDED	COUNTY	CITY OF TAVARES	D	16,820	13,621	0.81	C	840	842	496	0.78	C	4.00%	16,820	16,572	0.90	D	840	781	691	0.93	D
1410	57		County	50	3.93	C.R. 561	CR 448	CR 48	2	2	URBAN	UNDIVIDED	COUNTY	ASTATULA/TAVARES	D	21,780	9,093	0.42	C	1,070	429	442	0.41	C	1.00%	21,780	9,557	0.44	C	1,070	451	465	0.43	C
1420	60		County	40	0.63	C.R. 561	CR 48	SOUTH ASTATULA CITY LIMIT	2	2	URBAN	UNDIVIDED	COUNTY	TOWN OF ASTATULA	D	12,390	10,623	0.86	C	620	454	519	0.84	C	4.25%	12,390	13,081	1.06	F	620	559	639	1.03	F
1430	60		ADJACENT	40	2.49	C.R. 561	SOUTH ASTATULA CITY LIMIT	CR 455	2	2	URBAN	UNDIVIDED	COUNTY	UNINCORPORATED LAKE COUNTY	D	21,780	10,623	0.49	C	1,070	454	519	0.49	C	4.25%	21,780	13,081	0.60	C	1,070	559	639	0.60	C
1440	61		County	35	1.74	C.R. 561	CR 455	HOWEY CROSS ROAD	2	2	RURAL	UNDIVIDED	COUNTY	UNINCORPORATED LAKE COUNTY	C	9,030	7,010	0.78	C	470	351	303	0.75	C	4.50%	9,030	8,736	0.97	C	470	437	378	0.93	C
1450	63		County	40	1.77	C.R. 561	HOWEY CROSS ROAD	TURNPIKE ROAD / CR 561A	2	2	RURAL	UNDIVIDED	COUNTY	UNINCORPORATED LAKE COUNTY	C	12,260	8,301	0.68	C	640	431	351	0.67	C	5.00%	12,260	10,594	0.86	C	640	560	448	0.86	C
1460	36		County	45	0.46	C.R. 561 / C.R. 561A	TURNPIKE ROAD / CR 561A	US 27	2	2	URBAN	UNDIVIDED	COUNTY	UNINCORPORATED LAKE COUNTY	D	12,390	9,344	0.75	C	620	405	428	0.69	C	1.00%	12,390	10,066	0.81	C	620	436	461	0.74	C
1470	279		County	30	1.78	EAST AVELAKE MINNEOLA DRIMAIN AVE	US 27	EAST AVENUE	2	2	URBAN	UNDIVIDED	COUNTY	CITY OF MINNEOLA	D	14,060	1,812	0.13	C	710	57	102	0.14	C	1.00%	14,060	1,904	0.14	C	710	60	107	0.15	C
1480	279		ADJACENT	30	1.05	8TH ST/OSCEOLA ST/4TH ST/CARROLL ST/3RD ST/ORAGE AVE	EAST AVENUE	W MINNEOLA AVENUE	2	2	URBAN	UNDIVIDED	COUNTY	CITY OF CLEMONT	D	10,360	1,812</																	

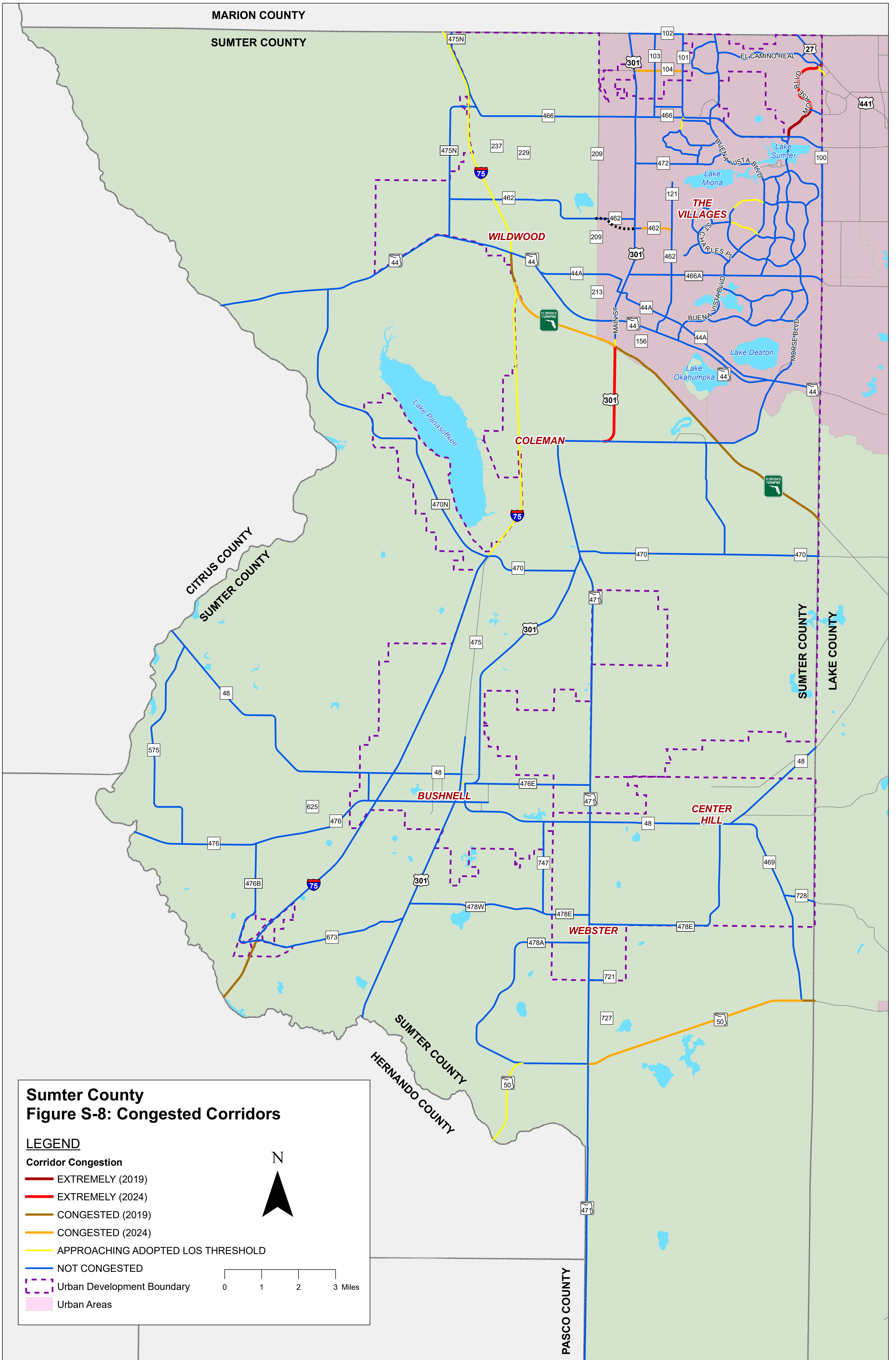
Lake County CMP Database

SEGMENT ID	COUNTY STATION	FOOT STATION	DATA SOURCE	SPEED LIMIT	SEGMENT LENGTH (MI)	ROAD NAME	FROM	TO	LANES (2019)	LANES (2024)	URBAN / RURAL	DIVIDED / UNDIVIDED	MAINTAINING AGENCY	JURISDICTION	ADOPTED LOS STANDARD	DAILY SERVICE VOLUME	2019 AADT	2019 DAILY VIC	2019 DAILY LOS	PEAK HOUR DIRECTIONAL SERVICE VOLUME	2019 PEAK HOUR NB/EV VOLUME	2019 PEAK HOUR SB/WV VOLUME	2019 PEAK HOUR VIC	2019 PEAK HOUR LOS	GROWTH RATE	DAILY SERVICE VOLUME (2024)	2024 AADT	2024 DAILY VIC	2024 DAILY LOS	PEAK HOUR DIRECTIONAL SERVICE VOLUME (2024)	2024 PEAK HOUR NB/EV VOLUME	2024 PEAK HOUR SB/WV VOLUME	2024 PEAK HOUR VIC	2024 PEAK HOUR LOS					
2140	163		County	30	0.35	HOOKS STREET	LAKEHORE DRIVE	US 27	2	2	URBAN	UNDIVIDED	COUNTY	CITY OF CLERMONT	D	10,360	7,614	0.73	D	530	372	280	0.70	D	4.75%	10,360	9,602	0.93	D	530	469	353	0.88	D					
2150	281		County	40	0.84	HOOKS STREET	US 27	OAKLEY BEAVER DRIVE	4	4	URBAN	DIVIDED	COUNTY	CITY OF CLERMONT	D	35,820	10,015	0.28	C	1,800	375	430	0.24	C	2.75%	35,820	11,470	0.32	C	1,800	429	492	0.27	C					
2153	289		County	35	0.27	HOOKS STREET	OAKLEY BEAVER DRIVE	CITRUS TOWER BOULEVARD	4	4	URBAN	DIVIDED	COUNTY	CITY OF CLERMONT	D	29,160	13,858	0.48	D	1,470	679	434	0.46	D	5.50%	29,160	18,112	0.62	D	1,470	876	567	0.60	D					
2155	185		County	35	1.05	HOOKS STREET	CITRUS TOWER BOULEVARD	US 27	4	4	URBAN	UNDIVIDED	COUNTY	CITY OF CLERMONT	D	29,160	10,718	0.37	C	1,470	568	364	0.34	C	1.00%	29,160	11,265	0.36	C	1,470	532	341	0.36	C					
2160	184	117021	County	35	0.59	HUFFSTETLER DRIVE	DAVID WALKER DRIVE	KURT STREET	2	2	URBAN	UNDIVIDED	COUNTY	CITY OF EUSTIS	D	10,360	11,159	0.11	C	530	75	50	0.14	C	5.25%	10,360	11,510	0.15	C	530	87	65	0.18	C					
2170	143		County	35	0.35	JALAMY ROAD	CR 478	CR 561A	2	2	URBAN	UNDIVIDED	COUNTY	UNINCORPORATED LAKE COUNTY	D	10,360	5,060	0.49	C	530	166	259	0.49	C	3.00%	10,360	5,886	0.57	D	530	192	300	0.57	D					
2180	170		County	35	1.57	JOHNS LAKE ROAD	US 27	HANCOCK ROAD	2	2	URBAN	UNDIVIDED	COUNTY	CITY OF CLERMONT	D	14,060	6,160	0.44	C	710	247	258	0.36	C	1.00%	14,060	6,474	0.46	C	710	260	271	0.38	C					
2190	249		County	35	0.25	KURT STREET	LAKEVIEW AVENUE	DAVID WALKER DRIVE	2	2	URBAN	UNDIVIDED	CITY OF EUSTIS	CITY OF EUSTIS	D	10,360	8,710	0.84	D	530	525	280	0.99	D	3.00%	10,360	10,097	0.97	D	530	609	325	1.15	F					
2200	248		County	35	0.50	KURT STREET	DAVID WALKER DRIVE	MT HOMER ROAD / W ARDICE AVENUE	2	2	URBAN	UNDIVIDED	CITY OF EUSTIS	CITY OF EUSTIS	D	14,060	4,334	0.31	C	710	172	237	0.33	C	2.50%	14,060	4,904	0.35	C	710	195	268	0.38	C					
2205	247		County	35	0.42	KURT STREET	MT HOMER ROAD / W ARDICE AVENUE	US 441	2	2	URBAN	UNDIVIDED	CITY OF EUSTIS	CITY OF EUSTIS	D	14,060	5,512	0.39	C	710	251	270	0.38	C	1.00%	14,060	5,793	0.41	C	710	264	284	0.40	C					
2210	213		County	25	0.45	W LADY LAKE BOULEVARD	W LADY LAKE BOULEVARD	US 27/US441	2	2	URBAN	UNDIVIDED	TOWN OF LADY LAKE	TOWN OF LADY LAKE	D	10,360	1,298	0.13	C	530	61	36	0.12	C	1.00%	10,360	1,364	0.13	C	530	64	38	0.12	C					
2220	214		County	25	0.96	E LADY LAKE BOULEVARD	US 27/US441	BERCHFIELD ROAD	2	2	URBAN	UNDIVIDED	COUNTY	TOWN OF LADY LAKE	D	10,360	562	0.05	C	530	30	24	0.06	C	4.75%	10,360	709	0.07	C	530	38	30	0.07	C					
2230	246		County	35	0.56	FAIRVIEW AVENUE	LAKEHORE DRIVE	OLD 441 / CR 500A	2	2	URBAN	UNDIVIDED	COUNTY	UNINCORPORATED LAKE COUNTY	D	10,360	680	0.07	C	530	41	23	0.08	C	1.00%	10,360	715	0.07	C	530	43	24	0.08	C					
2240	187		NO COUNT	40	0.64	LAKE DRIVE	CR 44	COUNTRY ROAD	2	2	RURAL	UNDIVIDED	COUNTY	UNINCORPORATED LAKE COUNTY	C	9,030	-	-	-	-	-	-	-	-	-	-	-	-	-	-	-	-	-	-	-	-	-	-	-
2250	187		County	35	0.50	LAKE ELLA ROAD	SUMTER COUNTY LINE	MICRO RACE TRACK ROAD	2	2	URBAN	UNDIVIDED	COUNTY	UNINCORPORATED LAKE COUNTY	D	10,360	1,912	0.18	C	530	125	65	0.24	C	10.00%	10,360	3,079	0.30	C	530	201	105	0.38	C					
2251	186		ADJACENT	35	0.51	LAKE ELLA ROAD	ADJACENT	MICRO RACE TRACK ROAD	2	2	URBAN	UNDIVIDED	COUNTY	UNINCORPORATED LAKE COUNTY	D	10,360	1,949	0.19	C	530	338	401	0.76	D	1.00%	10,360	2,048	0.20	C	530	353	421	0.39	D					
2255	186		County	45	1.91	LAKE ELLA ROAD	US 27	ROLLING ACRES ROAD	2	2	URBAN	UNDIVIDED	COUNTY	UNINCORPORATED LAKE COUNTY	D	16,820	1,940	0.12	C	840	107	69	0.13	C	1.00%	16,820	2,048	0.12	C	840	112	73	0.13	C					
2260	40		County	35	5.01	LAKE ERIE ROAD	CR 565	CR 565	2	2	RURAL	UNDIVIDED	COUNTY	UNINCORPORATED LAKE COUNTY	C	7,560	633	0.08	B	390	26	40	0.10	B	1.00%	7,560	665	0.09	B	390	27	42	0.11	B					
2270	242		County	35	1.59	LAKE EUSTIS DRIVE	US 441	CLAY BOULEVARD	2	2	URBAN	UNDIVIDED	COUNTY	EUSTIS/TAVARES	D	14,060	6,821	0.49	C	710	323	314	0.45	C	5.25%	14,060	8,810	0.63	D	710	417	406	0.59	D					
2280	145		County	40	2.57	LAKE LOUISA ROAD	LAKEHORE DRIVE	VISTA DEL LAGO BOULEVARD	2	2	URBAN	UNDIVIDED	COUNTY	UNINCORPORATED LAKE COUNTY	D	21,780	3,719	0.17	B	1,070	170	161	0.16	B	1.75%	21,780	4,056	0.19	B	1,070	165	176	0.17	B					
2290	151		County	35	1.13	LAKE LOUISA ROAD	VISTA DEL LAGO BOULEVARD	US 27	2	2	URBAN	UNDIVIDED	COUNTY	UNINCORPORATED LAKE COUNTY	D	14,060	3,583	0.25	C	710	86	206	0.29	C	1.00%	14,060	3,766	0.27	C	710	90	217	0.31	C					
2300	199		County	25	1.10	LAKE MACK DRIVE	CR 42	ANOTHER ANNA ROAD	2	2	RURAL	UNDIVIDED	COUNTY	UNINCORPORATED LAKE COUNTY	C	9,030	1,515	0.17	C	470	41	96	0.20	C	1.00%	9,030	1,592	0.18	C	470	43	101	0.21	C					
2310	229		County	25	0.20	LAKE STREET	US 441	MAIN STREET	2	2	URBAN	UNDIVIDED	CITY OF LEEBSBURG	CITY OF LEEBSBURG	D	10,360	3,074	0.30	C	530	106	129	0.24	C	2.50%	10,360	3,478	0.34	C	530	120	146	0.28	C					
2320	230		County	25	0.31	LAKE STREET	US 441	MAIN STREET	2	2	URBAN	UNDIVIDED	CITY OF LEEBSBURG	CITY OF LEEBSBURG	D	10,360	3,235	0.31	C	530	112	123	0.23	C	1.00%	10,360	3,400	0.33	C	530	118	129	0.24	C					
2330	39		County	45	1.55	LAKEHORE DRIVE (CLER)	CR 561	OSWALT ROAD	2	2	URBAN	UNDIVIDED	COUNTY	UNINCORPORATED LAKE COUNTY	D	16,820	2,757	0.16	C	840	121	132	0.16	C	6.50%	16,820	3,777	0.22	C	840	166	181	0.22	C					
2340	177		County	45	1.62	LAKEHORE DRIVE (CLER)	OSWALT ROAD	HARDER ROAD	2	2	URBAN	UNDIVIDED	COUNTY	UNINCORPORATED LAKE COUNTY	D	16,820	10,954	0.65	C	840	610	366	0.73	C	4.50%	16,820	13,651	0.81	C	840	760	456	0.90	C					
2350	38		County	40	0.67	LAKEHORE DRIVE (CLER)	HARDER ROAD	LAKE LOUISA ROAD	2	2	URBAN	UNDIVIDED	COUNTY	UNINCORPORATED LAKE COUNTY	D	16,820	16,152	0.96	D	840	465	862	1.03	F	1.00%	16,820	16,976	1.01	F	840	469	906	1.08	F					
2354	285		County	35	0.75	LAKEHORE DRIVE (CLER)	LAKE LOUISA ROAD	ANDERSON HILL ROAD	2	2	URBAN	UNDIVIDED	COUNTY	UNINCORPORATED LAKE COUNTY	D	13,320	7,955	0.60	D	680	448	290	0.66	D	2.75%	13,320	9,111	0.68	D	680	513	296	0.75	D					
2360	49		County	35	1.65	LAKEHORE DRIVE (EUSTIS)	CLAY BOULEVARD	SOUTH BAY STREET / SR 19 SB	2	2	URBAN	UNDIVIDED	COUNTY	CITY OF EUSTIS	D	10,360	6,874	0.57	D	530	318	225	0.60	D	2.50%	10,360	6,646	0.64	D	530	360	255	0.68	D					
2370	250		County	35	0.43	W LAKEVIEW AVENUE	KURT STREET	SR 19	2	2	URBAN	UNDIVIDED	CITY OF EUSTIS	CITY OF EUSTIS	D	10,360	7,701	0.74	D	530	461	265	0.87	D	2.50%	10,360	8,713	0.84	D	530	522	300	0.98	D					
2380	259		County	30	0.65	E LAKEVIEW AVENUE	SR 19	JASMINE STREET / CROOKED LAKE COURT	2	2	URBAN	UNDIVIDED	CITY OF EUSTIS	CITY OF EUSTIS	D	10,360	2,689	0.26	C	530	175	124	0.33	C	1.00%	10,360	2,826	0.27	C	530	184	130	0.35	C					
2384	259		ADJACENT	30	0.34	E LAKEVIEW AVENUE	JASMINE STREET / CROOKED LAKE COURT	HASELTON STREET	2	2	URBAN	UNDIVIDED	CITY OF EUSTIS	CITY OF EUSTIS	D	10,360	2,689	0.26	C	530	175	124	0.33	C	1.00%	10,360	2,826	0.27	C	530	184	130	0.35	C					
2390	149		County	35	0.62	LANE PARK CUTOFF	SR 19	LANE PARK CUTOFF	2	2	URBAN	UNDIVIDED	COUNTY	CITY OF TAVARES	D	13,320	2,193	0.16	C	680	128	202	0.30	C	4.25%	13,320	2,700	0.20	C	680	158	249	0.37	C					
2400	225		County	25	0.74	LEE STREET	GRIFFIN ROAD	US 441	2	2	URBAN	UNDIVIDED	CITY OF LEEBSBURG	CITY OF LEEBSBURG	D	10,360	2,244	0.22	C	530	123	98	0.23	C	1.00%	10,360	2,358	0.23	C	530	129	103	0.24	C					
2410	226		County	25	0.50	LEE STREET	US 441	MAIN STREET	2	2	URBAN	UNDIVIDED	CITY OF LEEBSBURG	CITY OF LEEBSBURG	D	10,360	2,533	0.24	C	530	119	126	0.24	C	1.00%	10,360	2,662	0.26	C	530	125	132	0.25	C					
2420	193		County	40	0.35	WILSON LAKE PARKWAY	US 27	LIBBY ROAD	2	2	URBAN	UNDIVIDED	COUNTY	CITY OF GROVELAND	D	15,930	2,429	0.15	C	790	71	130	0.16	C	4.75%	15,930	3,063	0.19	C	790	90	164	0.21	C					
2430	270	117005	County	35	0.99	LIMIT AVENUE	US 441	DONNELLY STREET	2	2	URBAN	UNDIVIDED	COUNTY	CITY OF MOUNT DORA	D	10,360	3,088	0.30	C	530	139	142	0.27	C	5.75%	10,360	4,084												

Lake County CMP Database

SEGMENT ID	COUNTY STATION	FOOT STATION	DATA SOURCE	SPEED LIMIT	SEGMENT LENGTH (MI)	ROAD NAME	FROM	TO	LANES (2019)	LANES (2024)	URBAN / RURAL	DIVIDED / UNDIVIDED	MAINTAINING AGENCY	JURISDICTION	ADOPTED LOS STANDARD	DAILY SERVICE VOLUME	2019 AADT	2019 DAILY VIC	2019 DAILY LOS	PEAK HOUR DIRECTIONAL SERVICE VOLUME	2019 PEAK HOUR NB/EV SERVICE VOLUME	2019 PEAK HOUR SB/WV SERVICE VOLUME	2019 PEAK HOUR VIC	2019 PEAK HOUR LOS	GROWTH RATE	DAILY SERVICE VOLUME (2024)	2024 AADT	2024 DAILY VIC	2024 DAILY LOS	PEAK HOUR DIRECTIONAL SERVICE VOLUME (2024)	2024 PEAK HOUR NB/EV SERVICE VOLUME	2024 PEAK HOUR SB/WV SERVICE VOLUME	2024 PEAK HOUR VIC	2024 PEAK HOUR LOS								
3220	0	115179	State	35	0.57	SR 44 (DIXIE AVENUE)	US 27	S 9TH STREET	4	4	URBAN	DIVIDED	STATE	CITY OF LEEBSBURG	D	32,400	25,000	0.77	D	1,630	914	994	0.61	D	1.00%	32,400	26,275	0.81	D	1,630	961	1,045	0.64	D								
3230	0	115143	ADJACENT	35	0.34	SR 44 (DIXIE AVENUE)	S 9TH STREET	CANAL STREET	4	4	URBAN	DIVIDED	STATE	CITY OF LEEBSBURG	D	32,400	23,250	0.72	D	1,630	981	864	0.60	D	1.00%	32,400	24,436	0.75	D	1,630	1,031	908	0.63	D								
3240	0	115143	State	40	0.41	SR 44 (DIXIE AVENUE)	CANAL STREET	S LAKE STREET	4	4	URBAN	DIVIDED	STATE	CITY OF LEEBSBURG	D	39,800	23,250	0.58	C	2,000	981	864	0.49	C	1.00%	39,800	24,436	0.61	C	2,000	1,031	908	0.52	C								
3250	0	115142	State	40	0.79	SR 44 (DIXIE AVENUE)	S LAKE STREET	E MAIN STREET	4	4	URBAN	DIVIDED	STATE	CITY OF LEEBSBURG	D	39,800	21,800	0.55	C	2,000	997	719	0.50	C	2.75%	39,800	24,967	0.63	C	2,000	1,142	823	0.57	C								
3260	0	115183	State	40	0.11	SR 44 (DIXIE AVENUE)	E MAIN STREET	US 441	4	4	URBAN	DIVIDED	STATE	CITY OF LEEBSBURG	D	41,790	21,600	0.52	C	2,100	-	-	-	-	-	1.00%	41,790	25,040	0.60	C	2,100	1,070	923	0.57	C							
3262	0	110005	State	45	0.45	SR 44 (OLD C.R. 44B)	US 441	WAYCROSS AVENUE	2	2	URBAN	DIVIDED	STATE	CITY OF MOUNT DORA	D	19,510	23,750	1.22	F	970	1,323	836	1.36	F	1.00%	19,510	24,961	1.28	F	970	1,390	879	1.43	F								
3268	0	110006	State	45	1.65	SR 44 (OLD C.R. 44B)	WAYCROSS AVENUE	ORANGE AVENUE	2	2	URBAN	UNDIVIDED	STATE	EUSTISSMOUNT DORA	D	18,590	17,750	0.95	D	920	918	856	1.00	D	1.00%	18,590	18,655	1.00	F	920	965	897	1.05	F								
3270	0	110500	ADJACENT	55	2.27	SR 44	ABRAMS ROAD	THRILL HILL ROAD	2	2	URBAN	UNDIVIDED	STATE	CITY OF EUSTISS	D	18,590	15,150	0.81	C	920	568	570	0.62	C	4.25%	18,590	18,655	1.00	F	920	699	702	0.76	C								
3280	0	110500	ADJACENT	55	1.14	SR 44	THRILL HILL ROAD	CITY OF MOUNT DORA	2	2	URBAN	UNDIVIDED	STATE	CITY OF MOUNT DORA	D	17,700	15,150	0.86	C	890	568	570	0.65	C	4.25%	17,700	18,655	1.05	F	890	699	702	0.80	C								
3290	0	110500	State	55	3.03	SR 44	CR 439	CR 437	2	2	RURAL	UNDIVIDED	STATE	UNINCORPORATED LAKE COUNTY	C	16,400	15,150	0.92	C	850	568	570	0.67	C	4.25%	16,400	18,655	1.14	D	850	699	702	0.83	C								
3300	0	110500	ADJACENT	55	1.15	SR 44	CR 437	CR 46A	2	2	RURAL	UNDIVIDED	STATE	UNINCORPORATED LAKE COUNTY	C	13,550	15,150	1.12	F	700	568	570	0.81	C	4.25%	13,550	18,655	1.38	F	700	699	702	1.00	D								
3310	0	110010	ADJACENT	55	3.43	SR 44	CR 46A	CR 44A	2	2	RURAL	UNDIVIDED	STATE	UNINCORPORATED LAKE COUNTY	C	8,400	8,450	1.01	D	430	407	409	0.95	C	3.00%	8,400	9,796	1.17	D	430	472	474	1.10	D								
3320	0	110010	ADJACENT	55	5.34	SR 44	CR 44A	OVERLOOK DRIVE	2	2	RURAL	UNDIVIDED	STATE	UNINCORPORATED LAKE COUNTY	C	8,400	8,450	1.01	D	430	407	409	0.95	C	3.00%	8,400	9,796	1.17	D	430	472	474	1.10	D								
3330	0	110010	State	55	5.64	SR 44	OVERLOOK DRIVE	COLLISIA COUNTY LINE	2	2	RURAL	UNDIVIDED	STATE	UNINCORPORATED LAKE COUNTY	C	16,400	8,450	0.52	B	850	407	409	0.48	B	3.00%	16,400	9,796	0.60	C	850	472	474	0.56	C								
3340	0	110010	ADJACENT	55	0.28	SR 44	CR 42	ORANGE CL	2	2	RURAL	UNDIVIDED	STATE	UNINCORPORATED LAKE COUNTY	C	13,550	8,450	0.62	C	700	407	409	0.58	C	3.00%	13,550	9,796	0.72	C	700	472	474	0.68	C								
3341	0	110010	State	55	1.80	SR 4428 (WEKIVA PKWY)	ORANGE CL	CR 46A (REALIGNED)	0	4	URBAN	DIVIDED	STATE	UNINCORPORATED LAKE COUNTY	D	-	-	-	-	-	-	-	-	-	-	-	-	-	-	-	-	-	-	-	-	-	-	-				
3345	0	110010	State	55	5.54	SR 4428 (WEKIVA PKWY)	CR 46A (REALIGNED)	SEMINOLE CL	0	4	URBAN	DIVIDED	STATE	UNINCORPORATED LAKE COUNTY	D	-	-	-	-	-	-	-	-	-	-	-	-	-	-	-	-	-	-	-	-	-	-	-				
3350	0	110501	ADJACENT	45	1.08	SR 46	US 441	VISTA VIEW	6	6	URBAN	DIVIDED	STATE	CITY OF MOUNT DORA	D	62,900	11,500	0.18	C	3,170	484	526	0.17	C	4.00%	62,900	13,992	0.22	C	3,170	589	640	0.20	C								
3360	0	110501	State	45	0.94	SR 46	US 441	VISTA VIEW	6	6	URBAN	DIVIDED	STATE	CITY OF MOUNT DORA	D	62,900	11,500	0.18	C	3,170	484	526	0.17	C	4.00%	62,900	13,992	0.22	C	3,170	589	640	0.20	C								
3370	0	110001	ADJACENT	55	2.11	SR 46	CR 437 SOUTH	ROUND LAKE ROAD	2	2	URBAN	UNDIVIDED	STATE	CITY OF MOUNT DORA	D	24,200	14,200	0.59	C	1,190	500	600	0.50	C	1.00%	24,200	14,924	0.62	C	1,190	526	631	0.53	C								
3380	0	110001	State	45	0.51	SR 46	CR 437 SOUTH	CR 437 NORTH	2	2	URBAN	UNDIVIDED	STATE	UNINCORPORATED LAKE COUNTY	D	17,700	14,200	0.80	C	880	500	600	0.68	C	1.00%	17,700	14,924	0.84	C	880	526	631	0.72	C								
3390	0	111019	State	45	1.11	SR 46	CR 437 NORTH	CR 435	2	2	URBAN	UNDIVIDED	STATE	UNINCORPORATED LAKE COUNTY	D	17,700	16,850	0.95	D	880	609	712	0.81	C	4.00%	17,700	20,501	1.16	F	880	741	866	0.98	D								
3395	0	111019	ADJACENT	45	0.87	SR 46	CR 435	CR 46A (REALIGNED)	0	2	URBAN	UNDIVIDED	STATE	UNINCORPORATED LAKE COUNTY	D	-	-	-	-	-	-	-	-	-	-	-	-	-	-	-	-	-	-	-	-	-	-	-				
3400	0	111019	ADJACENT	55	4.68	SR 46	CR 435	SEMINOLE COUNTY LINE	2	0	RURAL	UNDIVIDED	STATE	UNINCORPORATED LAKE COUNTY	C	16,400	16,850	1.03	D	850	609	712	0.84	C	1.00%	-	17,710	-	-	-	-	-	-	-	-	-	-	-	-	-	-	-
3410	131		County	45	2.61	SR 46	CR 46A	SEMINOLE COUNTY LINE	2	2	RURAL	UNDIVIDED	STATE	UNINCORPORATED LAKE COUNTY	C	8,400	24,846	2.96	E	430	981	1,088	2.53	E	1.00%	8,400	26,113	3.11	E	430	1,031	1,143	2.66	E								
3420	0	110319	State	55	3.64	SR 50	SUMTER COUNTY LINE	CR 565 / BAY LAKE ROAD	2	2	URBAN	UNDIVIDED	STATE	UNINCORPORATED LAKE COUNTY	D	24,200	13,800	0.57	C	1,190	507	677	0.57	C	1.25%	24,200	14,684	0.61	C	1,190	539	720	0.61	C								
3430	0	110319	ADJACENT	35	0.77	SR 50	CR 565 / BAY LAKE ROAD	CR 33	2	2	URBAN	UNDIVIDED	STATE	CITY OF MASCOTTE	D	14,800	13,800	0.93	D	750	507	677	0.90	D	1.25%	14,800	14,684	0.99	D	750	539	720	0.96	D								
3440	0	110241	State	45	0.66	SR 50	CR 33	GROVELAND FARMS ROAD	4	4	URBAN	DIVIDED	STATE	CITY OF MASCOTTE	D	39,800	25,000	0.83	C	2,000	945	1,179	0.90	C	3.25%	39,800	29,335	0.74	C	2,000	992	1,383	0.69	C								
3450	0	110241	ADJACENT	45	0.83	SR 50	CR 33	GROVELAND FARMS ROAD	4	4	URBAN	DIVIDED	STATE	CITY OF GROVELAND	D	41,790	25,000	0.60	C	2,100	845	1,179	0.58	C	3.25%	41,790	29,335	0.70	C	2,100	992	1,383	0.66	C								
3460	0	115182	State	35	0.44	SR 50 (E)	SR 50 ONE WAY PAIRS	SR 19	4	4	URBAN	DIVIDED	STATE	CITY OF GROVELAND	D	19,440	14,750	0.76	D	1,960	-	1,173	-	-	-	-	-	-	-	-	-	-	-	-	-	-	-	-	-			
3470	0	115077	State	35	0.44	SR 50 (W)	SR 50 ONE WAY PAIRS	SR 19	4	4	URBAN	DIVIDED	STATE	CITY OF GROVELAND	D	19,440	15,500	0.80	D	1,960	-	-	-	-	-	-	-	-	-	-	-	-	-	-	-	-	-	-	-			
3481	0	115181	State	35	0.33	SR 50 (E)	SR 19	SR 33 SOUTH	4	4	URBAN	DIVIDED	STATE	CITY OF GROVELAND	D	19,440	16,500	0.85	D	1,960	-	-	-	-	-	-	-	-	-	-	-	-	-	-	-	-	-	-	-			
3491	0	115076	State	35	0.34	SR 50 (W)	SR 19	SR 33 SOUTH	4	4	URBAN	DIVIDED	STATE	CITY OF GROVELAND	D	19,440	15,500	0.80	D	1,960	-	-	-	-	-	-	-	-	-	-	-	-	-	-	-	-	-	-	-			
3500	0	115134	State	55	1.53	SR 50	SR 33 SOUTH	CR 565A NORTH	4	4	URBAN	DIVIDED	STATE	CITY OF GROVELAND	D	41,790	26,500	0.63	C	2,100	1,092	1,293	0.62	C	1.00%	41,790	27,852	0.67	C	2,100	1,148	1,359	0.65	C								
3510	0	110396	State	55	3.15	SR 50	CR 561	CITY OF GROVELAND NORTH	4	4	URBAN	DIVIDED	STATE	CITY OF GROVELAND	D	41,790	31,000	0.74	C	2,100	981	1,434	0.68	C	3.25%	41,790	36,376	0.87	C	2,100	1,151	1,683	0.80	C								
3520	0	115057	State	40	1.19	SR 50	CR 561	EAST AVENUE	4	4	URBAN	DIVIDED	STATE	CITY OF CLERMONT	D	39,800	36,500	0.92	C	2,000	1,059	1,538	0.77	C	1.50%	39,800	39,321	0.99	D	2,000	1,141	1,657	0.83	C								
3530	0	115050	State	40																																						





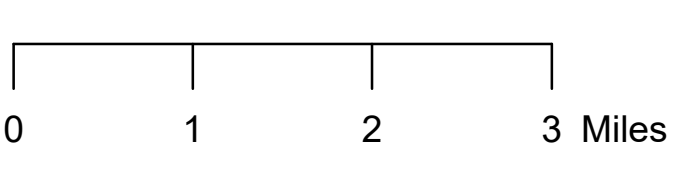
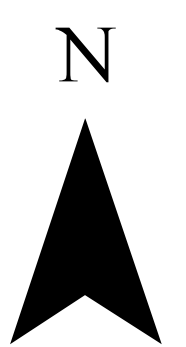
**Sumter County  
Figure S-8: Congested Corridors**

**LEGEND**

**Corridor Congestion**

- EXTREMELY (2019)
- EXTREMELY (2024)
- CONGESTED (2019)
- CONGESTED (2024)
- APPROACHING ADOPTED LOS THRESHOLD
- NOT CONGESTED

- Urban Development Boundary
- Urban Areas





Sumter County CMP Database

SEGMENT ID	COUNTY STATION	FOOT STATION	DATA SOURCE	SPEED LIMIT	SEGMENT LENGTH (MI)	ROAD NAME	FROM	TO	LANES (2019)	LANES (2024)	URBAN / RURAL	DIVIDED / UNDIVIDED	MAINTAINING AGENCY	JURISDICTION	ADOPTED LOS STANDARD	DAILY SERVICE VOLUME	2019 AADT	2019 DAILY VIC	2019 DAILY LOS	PEAK HOUR DIRECTIONAL SERVICE VOLUME	2019 PEAK HOUR NB/EB VOLUME	2019 PEAK HOUR SB/WB VOLUME	2019 PEAK HOUR VIC	2019 PEAK HOUR LOS	GROWTH RATE	DAILY SERVICE VOLUME (2024)	2024 AADT	2024 DAILY VIC	2024 DAILY LOS	PEAK HOUR DIRECTIONAL SERVICE VOLUME (2024)	2024 PEAK HOUR NB/EB VOLUME	2024 PEAK HOUR SB/WB VOLUME	2024 PEAK HOUR VIC	2024 PEAK HOUR LOS		
4000	474		SUMTER	20	1.61	ST. CHARLES	BUENA VISTA BLVD	AMBERJACK TERRACE	2	2	URBAN	UNDIVIDED	COUNTY	UNINCORPORATED SUMTER COUNTY	D	13,320	4,520	0.34	C	675	252	219	0.37	C	1.00%	13,320	4,751	0.36	C	675	265	230	0.39	C		
4010	472		SUMTER	20	0.66	ST. CHARLES	AMBERJACK TERRACE	BAILEY TRAIL	2	2	URBAN	UNDIVIDED	COUNTY	UNINCORPORATED SUMTER COUNTY	D	13,320	8,397	0.63	D	675	448	384	0.66	D	3.00%	13,320	9,734	0.73	D	675	519	445	0.77	D		
4020	470		SUMTER	20	0.83	ST. CHARLES	BAILEY TRAIL	BUENA VISTA BLVD	2	2	URBAN	UNDIVIDED	COUNTY	UNINCORPORATED SUMTER COUNTY	D	13,320	10,843	0.81	D	675	598	486	0.89	D	1.00%	13,320	11,396	0.86	D	675	629	511	0.93	D		
4030	476		SUMTER	20	0.55	TAMARIND GROVE RUN	DIVINDING CREEK PATH	ST. CHARLES PLACE	2	2	URBAN	UNDIVIDED	COUNTY	UNINCORPORATED SUMTER COUNTY	D	10,360	3,412	0.33	C	525	150	173	0.33	C	6.00%	10,360	4,566	0.44	C	525	201	232	0.44	C		
4040	478		SUMTER	20	0.71	BUTTONWOOD RUN	HARDING PATH	ST CHARLES PL	2	2	URBAN	UNDIVIDED	COUNTY	UNINCORPORATED SUMTER COUNTY	D	10,360	5,432	0.52	D	525	258	270	0.51	D	4.75%	10,360	6,851	0.66	D	525	325	341	0.65	D		
4050	480		SUMTER	20	0.57	PENNECAMP DRIVE	MEADOWLARK AVE	ST. CHARLES PLACE	2	2	URBAN	UNDIVIDED	COUNTY	UNINCORPORATED SUMTER COUNTY	D	10,360	4,230	0.41	C	525	195	203	0.39	C	6.75%	10,360	5,864	0.57	D	525	270	281	0.54	D		
4060	267		SUMTER	20	0.57	STILLWATER TRL	MORSE BLVD	LOCKHART AVE	2	2	URBAN	UNDIVIDED	COUNTY	UNINCORPORATED SUMTER COUNTY	D	10,360	4,961	0.48	C	525	254	252	0.48	C	1.00%	10,360	5,214	0.50	D	525	267	265	0.51	D		
4070	270		SUMTER	20	1.08	STILLWATER TRL	LOCKHART AVE	ODELL CIRCLE	2	2	URBAN	UNDIVIDED	COUNTY	UNINCORPORATED SUMTER COUNTY	D	10,360	3,452	0.33	C	525	218	148	0.42	C	8.75%	10,360	5,251	0.51	D	525	332	225	0.63	D		
4830	483		SUMTER	30	1.18	HILLSBOROUGH TRAIL	BUENA VISTA BLVD	ANNA MARIA AVE	2	2	URBAN	UNDIVIDED	COUNTY	UNINCORPORATED SUMTER COUNTY	D	14,060	7,673	0.55	D	713	333	375	0.53	D	1.00%	14,060	8,064	0.57	D	713	350	394	0.55	D		
4835	1271		SUMTER	55	1.34	Hillsborough Trail	ANNA MARIA AVE	MORSE BLVD	2	2	URBAN	UNDIVIDED	COUNTY	UNINCORPORATED SUMTER COUNTY	D	16,815	6,780	0.40	C	836	342	306	0.41	C	1.00%	16,815	7,126	0.42	C	836	359	322	0.43	C		
4860	486		SUMTER	35	0.60	HILLSBOROUGH TRAIL	Anna Maria Ave	HILLSBOROUGH TRAIL	2	2	URBAN	UNDIVIDED	COUNTY	UNINCORPORATED SUMTER COUNTY	D	10,360	4,453	0.43	C	525	201	225	0.43	C	5.00%	10,360	5,683	0.55	D	525	257	287	0.55	D		
4870	487		SUMTER	35	0.85	Charlotte Crt	HILLSBOROUGH TRAIL	PINELLAS PLAGE	2	2	URBAN	UNDIVIDED	COUNTY	UNINCORPORATED SUMTER COUNTY	D	10,360	3,218	0.31	C	525	151	169	0.32	C	8.00%	10,360	4,728	0.46	C	525	222	248	0.47	C		
4880	488		SUMTER	35	2.42	PINELLAS PLAGE	BUENA VISTA BLVD	MORSE BLVD	2	2	URBAN	UNDIVIDED	COUNTY	UNINCORPORATED SUMTER COUNTY	D	13,320	8,272	0.62	D	675	375	452	0.67	D	1.25%	13,320	8,802	0.66	D	675	399	481	0.71	D		
4890	489		SUMTER	35	1.84	TALLEY RIDGE RD	BUENA VIST BLVD	BUENA VISTA BLVD	2	2	URBAN	UNDIVIDED	COUNTY	UNINCORPORATED SUMTER COUNTY	D	10,360	4,242	0.41	C	525	204	215	0.41	C	1.00%	10,360	4,458	0.43	C	525	214	226	0.43	C		
4910	491		NO COUNT	35	0.82	OAK FOREST DR	SOUTHERN TRACE	TALLEY RIDGE RD	2	2	URBAN	UNDIVIDED	COUNTY	UNINCORPORATED SUMTER COUNTY	D	10,360	-	-	-	525	-	-	-	-	-	-	-	10,360	-	-	-	525	-	-	-	-
4920	492		SUMTER	35	0.79	PARR DR	BELVEDERE BLVD	BUENA VISTA BLVD	2	2	URBAN	UNDIVIDED	COUNTY	UNINCORPORATED SUMTER COUNTY	D	13,320	4,319	0.32	C	675	236	223	0.35	C	1.00%	13,320	4,539	0.34	C	675	248	234	0.37	C		
4930	493		SUMTER	35	0.53	TRIGGERFISH RUN	BUTTONWOOD RUN	PENNECAMP DR	2	2	URBAN	UNDIVIDED	COUNTY	UNINCORPORATED SUMTER COUNTY	D	10,360	1,172	0.11	C	525	60	55	0.11	C	1.25%	10,360	1,247	0.12	C	525	64	59	0.12	C		
5000	249		SUMTER	25	0.93	BAILEY TRL	BUENA VISTA BLVD (N)	SUNSET RIDGE DR	2	2	URBAN	UNDIVIDED	COUNTY	UNINCORPORATED SUMTER COUNTY	D	13,320	10,981	0.82	D	675	520	532	0.79	D	3.25%	13,320	12,885	0.97	D	675	610	624	0.92	D		
5010	252		SUMTER	30	0.39	SUNSET RIDGE DR	BAILEY TRL	ST. CHARLES PLACE	2	2	URBAN	UNDIVIDED	COUNTY	UNINCORPORATED SUMTER COUNTY	D	13,320	10,453	0.78	D	675	540	504	0.80	D	1.00%	13,320	10,986	0.82	D	675	568	530	0.84	D		
5020	255		SUMTER	20	0.50	BAILEY TRL	ST. CHARLES PL	BASSINGER CT	2	2	URBAN	UNDIVIDED	COUNTY	UNINCORPORATED SUMTER COUNTY	D	13,320	3,543	0.27	C	675	163	163	0.24	C	5.50%	13,320	4,631	0.35	C	675	213	213	0.32	C		
5030	258		SUMTER	20	0.39	BAILEY TRL	BASSINGER CT	BUENA VISTA BLVD (S)	2	2	URBAN	UNDIVIDED	COUNTY	UNINCORPORATED SUMTER COUNTY	D	13,320	5,423	0.41	C	675	278	260	0.41	C	1.75%	13,320	5,914	0.44	C	675	303	284	0.45	C		
5080	484		NO COUNT	35	1.00	CR 209	CR 232	C-462 E	2	2	URBAN	UNDIVIDED	COUNTY	WILDWOOD	D	10,360	-	-	-	525	-	-	-	-	-	-	-	10,360	-	-	-	525	-	-	-	-
6000	200		NO COUNT	30	1.26	CR 213 (Walker Rd)	SR 44	C-44A	2	2	URBAN	UNDIVIDED	COUNTY	WILDWOOD	D	13,320	-	-	-	675	-	-	-	-	-	-	-	13,320	-	-	-	675	-	-	-	-
12500	1250		SUMTER	55	0.76	WOODRIDGE DR	CR 103	CR 101	2	2	URBAN	UNDIVIDED	COUNTY	UNINCORPORATED SUMTER COUNTY	D	15,930	4,394	0.28	C	792	232	235	0.30	C	1.00%	15,930	4,618	0.29	C	792	244	247	0.31	C		
325310	180122	180122	FDOT	60	2.73	US 301/SR 35	CR 656	C-478	2	2	RURAL	UNDIVIDED	STATE	UNINCORPORATED SUMTER COUNTY	C	8,400	4,886	0.58	C	430	211	245	0.57	C	1.25%	8,400	5,199	0.62	C	430	225	261	0.61	C		
3221000	382		NO COUNT	25	1.40	CR 156	US 301/SR 35	SR 44	2	2	URBAN	UNDIVIDED	COUNTY	WILDWOOD	D	10,360	-	-	-	525	-	-	-	-	-	-	-	10,360	-	-	-	525	-	-	-	-
3223000	115		SUMTER	45	3.53	SR 931-75	CR 674	SR 931-75	2	2	RURAL	UNDIVIDED	COUNTY	UNINCORPORATED SUMTER COUNTY	C	16,400	2,236	0.14	B	850	106	78	0.12	B	1.00%	16,400	2,350	0.14	B	850	111	82	0.13	B		
3224000	464		SUMTER	30	1.37	CR 121	C-462	CR 114	2	2	URBAN	UNDIVIDED	COUNTY	WILDWOOD	D	10,360	3,366	0.32	C	525	208	135	0.40	C	4.75%	10,360	4,245	0.41	C	525	262	170	0.50	D		
3229000	330		NO COUNT	35	2.08	CR 727	CR 721	CR 721	2	2	RURAL	UNDIVIDED	COUNTY	UNINCORPORATED SUMTER COUNTY	C	9,030	-	-	-	469	-	-	-	-	-	-	-	9,030	-	-	-	469	-	-	-	-
3231000	388	118009	FDOT	35	0.83	CR 728	C-469	LAKE COUNTY BOUNDARY	2	2	URBAN	UNDIVIDED	COUNTY	UNINCORPORATED SUMTER COUNTY	D	10,360	421	0.04	C	525	21	17	0.04	C	1.00%	10,360	442	0.04	C	525	22	18	0.04	C		
3245100	340		NO COUNT	45	1.56	CR 229	SR 44	C-462	2	2	URBAN	UNDIVIDED	COUNTY	UNINCORPORATED SUMTER COUNTY	D	12,390	-	-	-	616	-	-	-	-	-	-	-	12,390	-	-	-	616	-	-	-	-
3245110	342		NO COUNT	45	2.26	CR 229	C-462	C-466	2	2	URBAN	UNDIVIDED	COUNTY	UNINCORPORATED SUMTER COUNTY	D	24,200	-	-	-	1,190	-	-	-	-	-	-	-	24,200	-	-	-	1,190	-	-	-	-
3248000	273		SUMTER	35	0.29	CR 101	C-466	WOODRIDGE DR	4	4	URBAN	DIVIDED	COUNTY	WILDWOOD	D	29,160	7,772	0.27	C	1,467	373	343	0.25	C	1.00%	29,160	8,168	0.28	C	1,467	392	360	0.27	C		
3248102	462		NO COUNT	35	1.25	CR 209	CR 216	C-466	2	2	URBAN	UNDIVIDED	COUNTY	WILDWOOD	D	10,360	-	-	-	525	-	-	-	-	-	-	-	10,360	-	-	-	525	-	-	-	-
3248105	120		NO COUNT	45	1.51	CR 209	C-462 E	CR 216	2	2	URBAN	UNDIVIDED	COUNTY	UNINCORPORATED SUMTER COUNTY	D	12,390	-	-	-	616	-	-	-	-	-	-	-	12,390	-	-	-	616	-	-	-	-
3248110	1402		NO COUNT	35	1.26	CR 209	C-466	CR 202	2	2	URBAN	UNDIVIDED	COUNTY	WILDWOOD	D	10,360	-	-	-	525	-	-	-	-	-	-	-	10,360	-	-	-	525	-	-	-	-
3248400	468		SUMTER	35	1.31	CR 104	US 301/SR 35	CR 101	2	2	URBAN	UNDIVIDED	COUNTY	UNINCORPORATED SUMTER COUNTY	C	5,110	2,928	0.57	C	259	79	249	0.96	C	5.50%	5,110	3,827	0.75	C	259	103	325	1.25	D		
3253100	85307	85307	FDOT	60	0.61	US 301/SR 35	HERNANDO COUNTY BOUNDARY	CR 656	2	2	RURAL	UNDIVIDED	STATE	UNINCORPORATED SUMTER COUNTY	C	8,400	4,457	0.																		



Sumter County CMP Database

SEGMENT ID	COUNTY STATION	FOOT STATION	DATA SOURCE	SPEED LIMIT	SEGMENT LENGTH (MI)	ROAD NAME	FROM	TO	LANES (2019)	LANES (2024)	URBAN / RURAL	DIVIDED / UNDIVIDED	MAINTAINING AGENCY	JURISDICTION	ADOPTED LOS STANDARD	DAILY SERVICE VOLUME	2019 AADT	2019 DAILY VIC	2019 DAILY LOS	PEAK HOUR DIRECTIONAL SERVICE VOLUME	2019 PEAK HOUR NB/EB VOLUME	2019 PEAK HOUR SB/WB VOLUME	2019 PEAK HOUR VIC	2019 PEAK HOUR LOS	GROWTH RATE	DAILY SERVICE VOLUME (2024)	2024 AADT	2024 DAILY VIC	2024 DAILY LOS	PEAK HOUR DIRECTIONAL SERVICE VOLUME (2024)	2024 PEAK HOUR NB/EB VOLUME	2024 PEAK HOUR SB/WB VOLUME	2024 PEAK HOUR VIC	2024 PEAK HOUR LOS
3540100	362		SUMTER	35	0.41	C-476 E (Noble Ave)	US 301/SR 35	JASPER ST	2	2	URBAN	UNDIVIDED	COUNTY	BUSHNELL	D	24,200	2,528	0.10	B	1,190	140	106	0.12	B	1.00%	24,200	2,657	0.11	B	1,190	147	111	0.12	B
3540110	82	180006	FDOT	45	2.76	C-476 E	JASPER ST	SR 471	2	2	URBAN	UNDIVIDED	COUNTY	BUSHNELL	D	24,200	2,086	0.09	B	1,190	95	110	0.09	B	1.00%	24,200	2,192	0.09	B	1,190	100	116	0.10	B
3541110	15		SUMTER	45	0.20	C-462	US 301/SR 35	CR 131	2	2	URBAN	UNDIVIDED	COUNTY	WILDWOOD	D	24,200	12,120	0.50	C	1,190	392	773	0.65	C	5.50%	24,200	15,840	0.65	C	1,190	512	1,010	0.85	D
3542100	11		SUMTER	45	2.01	C-462	C-475	CR 229	2	2	URBAN	UNDIVIDED	COUNTY	UNINCORPORATED SUMTER COUNTY	D	24,200	825	0.03	B	1,190	15	77	0.06	B	9.75%	24,200	1,314	0.05	B	1,190	24	123	0.10	B
3542120	356		SUMTER	45	1.05	C-462	CR 229	CR 223	2	2	URBAN	UNDIVIDED	COUNTY	UNINCORPORATED SUMTER COUNTY	D	24,200	1,549	0.06	B	1,190	46	107	0.09	B	3.25%	24,200	1,818	0.08	B	1,190	54	126	0.11	B
3542130	13		SUMTER	45	1.34	C-462	CR 223	CR 209	2	2	URBAN	UNDIVIDED	COUNTY	UNINCORPORATED SUMTER COUNTY	D	24,200	2,888	0.12	B	1,190	123	197	0.17	B	3.75%	24,200	3,472	0.14	B	1,190	148	237	0.20	B
3542150	14		SUMTER	55	1.01	C-462	CR 209	US 301/SR 35	2	2	URBAN	UNDIVIDED	COUNTY	WILDWOOD	D	24,200	3,385	0.14	B	1,190	99	271	0.23	B	3.50%	24,200	4,020	0.17	B	1,190	118	322	0.27	B
3543100	66		SUMTER	35	0.75	C-472	US 301/SR 35	CR 117	2	2	URBAN	UNDIVIDED	COUNTY	WILDWOOD	D	14,060	5,422	0.39	C	713	256	238	0.36	C	3.50%	14,060	6,440	0.46	C	713	304	283	0.43	C
3545100	972210	972210	FDOT	70	3.35	SR 91/FLORIDAS TURNPIKE	SR 91-75	US 301/SR 35	4	4	RURAL	FREEWAY	STATE	WILDWOOD	C	43,000	46,929	1.09	D	2,500	2,483	1,820	0.99	C	5.00%	43,000	59,895	1.39	E	2,500	3,169	2,323	1.27	E
3545110	972200	972200	FDOT	70	7.32	SR 91/FLORIDAS TURNPIKE	US 301/SR 35	LAKE COUNTY BOUNDARY	4	4	RURAL	FREEWAY	STATE	WILDWOOD	C	43,000	51,500	1.20	D	2,500	2,548	2,136	1.02	D	5.25%	43,000	66,515	1.55	F	2,500	3,291	2,759	1.32	E
3546100	180208	180208	FDOT	70	1.78	SR 93I-75	HERNANDO COUNTY BOUNDARY	CR 673	4	4	RURAL	FREEWAY	STATE	UNINCORPORATED SUMTER COUNTY	C	43,000	54,500	1.27	E	2,500	2,761	2,179	1.10	D	4.00%	43,000	66,308	1.54	F	2,500	3,359	2,651	1.34	E
3546120	180194	180194	FDOT	70	5.91	SR 93I-75	CR 673	C-48	6	6	RURAL	FREEWAY	STATE	BUSHNELL	C	64,000	54,776	0.86	C	3,720	2,609	2,213	0.70	C	2.50%	64,000	61,974	0.97	C	3,720	2,952	2,504	0.79	C
3546130	180358	180358	FDOT	70	6.43	SR 93I-75	C-48	C-470 E	6	6	RURAL	FREEWAY	STATE	BUSHNELL	C	64,000	54,481	0.85	C	3,720	1,590	1,489	0.43	B	1.00%	64,000	57,260	0.89	C	3,720	1,671	1,565	0.45	B
3546140	189920	189920	FDOT	70	7.71	SR 93I-75	C-470 E	SR 91/FLORIDAS TURNPIKE	6	6	RURAL	FREEWAY	STATE	UNINCORPORATED SUMTER COUNTY	C	64,000	53,759	0.84	C	3,720	2,739	2,296	0.74	C	4.50%	64,000	66,993	1.05	D	3,720	3,413	2,861	0.92	C
3546150	180186	180186	FDOT	70	0.82	SR 93I-75	SR 44	SR 91/FLORIDAS TURNPIKE	6	6	RURAL	FREEWAY	STATE	UNINCORPORATED SUMTER COUNTY	C	64,000	77,786	1.22	D	3,720	3,850	3,227	1.03	D	3.25%	64,000	91,275	1.43	E	3,720	4,518	3,787	1.21	D
3546180	180188	180188	FDOT	70	6.37	SR 93I-75	SR 44	MARION COUNTY BOUNDARY	6	6	RURAL	FREEWAY	STATE	UNINCORPORATED SUMTER COUNTY	C	64,000	83,643	1.31	E	3,720	3,035	2,910	0.82	C	2.50%	64,000	94,634	1.48	F	3,720	3,433	3,292	0.92	C
3547105	418	180209	FDOT	45	0.51	US 27/US 441/SR 500	MARION COUNTY BOUNDARY	BUENOS AIRES BLVD	6	6	URBAN	DIVIDED	STATE	UNINCORPORATED SUMTER COUNTY	D	59,900	40,929	0.68	C	3,020	1,820	1,484	0.60	C	1.25%	59,900	43,552	0.73	C	3,020	1,937	1,579	0.64	C
3547120	458	180209	FDOT	45	0.51	US 27/US 441/SR 500	BUENOS AIRES BLVD	MORSE BLVD	6	6	URBAN	DIVIDED	STATE	UNINCORPORATED SUMTER COUNTY	D	59,900	40,929	0.68	C	3,020	1,820	1,484	0.60	C	1.25%	59,900	43,552	0.73	C	3,020	1,937	1,579	0.64	C
3549100	83		SUMTER	55	1.34	C-476 W	HERNANDO COUNTY BOUNDARY	C-575	2	2	URBAN	UNDIVIDED	COUNTY	UNINCORPORATED SUMTER COUNTY	C	17,000	3,753	0.22	B	840	132	200	0.24	B	4.25%	17,000	4,621	0.27	B	840	163	246	0.29	B
3549110	84		SUMTER	45	2.01	C-476 W	C-575	C-476B	2	2	URBAN	UNDIVIDED	COUNTY	UNINCORPORATED SUMTER COUNTY	C	17,000	4,710	0.28	B	840	185	181	0.22	B	3.00%	17,000	5,460	0.32	B	840	214	210	0.25	B
3549120	85		SUMTER	45	1.55	C-476 W	C-476B	CR 625	2	2	URBAN	UNDIVIDED	COUNTY	UNINCORPORATED SUMTER COUNTY	C	17,000	4,353	0.26	B	840	148	247	0.29	B	3.25%	17,000	5,108	0.30	B	840	174	290	0.35	B
3549130	364		SUMTER	45	1.82	C-476 W	CR 625	CR 616	2	2	URBAN	UNDIVIDED	COUNTY	BUSHNELL	D	24,200	4,955	0.20	B	1,190	164	296	0.25	B	2.75%	24,200	5,675	0.23	B	1,190	188	339	0.28	B
3549140	86		SUMTER	45	2.34	C-476 W	CR 616	US 301/SR 35	2	2	URBAN	UNDIVIDED	COUNTY	BUSHNELL	D	24,200	4,730	0.20	B	1,190	101	357	0.30	B	3.00%	24,200	5,483	0.23	B	1,190	117	414	0.35	B
3549160	366		SUMTER	30	0.27	C-476 (Seminole Ave)	US 301/SR 35	C-48	2	2	URBAN	UNDIVIDED	COUNTY	BUSHNELL	D	10,360	4,545	0.44	C	525	162	286	0.54	D	1.75%	10,360	4,957	0.48	C	525	177	312	0.59	D
3550100	62		SUMTER	45	2.90	C-470 N	CR 416 N	CR 479	2	2	URBAN	UNDIVIDED	COUNTY	UNINCORPORATED SUMTER COUNTY	D	24,200	6,801	0.28	B	1,190	367	220	0.31	B	3.00%	24,200	7,884	0.33	B	1,190	425	255	0.36	C
3550110	55		SUMTER	55	2.48	C-470 E	SR 93I-75	US 301/SR 35	2	2	URBAN	UNDIVIDED	COUNTY	UNINCORPORATED SUMTER COUNTY	D	24,200	11,225	0.46	C	1,190	345	574	0.48	C	9.25%	24,200	17,470	0.72	D	1,190	537	893	0.75	D
3551100	1220	180201	FDOT	45	1.15	SR 44	US 301/SR 35	CR 139	4	4	URBAN	DIVIDED	STATE	WILDWOOD	D	41,790	20,843	0.50	C	2,100	904	779	0.43	C	2.75%	41,790	23,871	0.57	C	2,100	1,035	892	0.49	C
3551130	1200	180102	FDOT	45	2.59	SR 44	C-44A	US 301/SR 35	4	4	URBAN	DIVIDED	STATE	UNINCORPORATED SUMTER COUNTY	D	41,790	19,714	0.47	C	2,100	607	924	0.44	C	5.75%	41,790	26,072	0.62	C	2,100	803	1,222	0.58	C
3552100	180203	180203	FDOT	60	2.92	SR 44	CITRUS COUNTY BOUNDARY	C-470 N	4	4	RURAL	DIVIDED	STATE	UNINCORPORATED SUMTER COUNTY	C	40,300	13,286	0.33	B	2,100	367	743	0.35	B	6.25%	40,300	17,990	0.45	B	2,100	497	1,005	0.48	B
3552110	392	180203:180202	FDOT	60	3.67	SR 44	C-470 N	C-475	4	4	RURAL	DIVIDED	STATE	UNINCORPORATED SUMTER COUNTY	C	40,300	13,000	0.32	B	2,100	423	649	0.31	B	6.50%	40,300	17,811	0.44	B	2,100	580	890	0.42	B
3552120	394	180202	FDOT	60	1.73	SR 44	C-475	SR 93I-75	4	4	RURAL	DIVIDED	STATE	UNINCORPORATED SUMTER COUNTY	C	40,300	11,357	0.28	B	2,100	479	556	0.26	B	6.00%	40,300	15,198	0.38	B	2,100	641	744	0.35	B
3552130	396	180102	FDOT	45	1.00	SR 44	C-44A	SR 93I-75	4	4	URBAN	DIVIDED	STATE	UNINCORPORATED SUMTER COUNTY	D	65,600	19,714	0.30	B	3,240	607	924	0.29	B	5.75%	65,600	26,072	0.40	B	3,240	803	1,222	0.38	B
3553100	378		SUMTER	35	0.27	C-48	C-478 (Virginia Ave)	C-469	2	2	RURAL	UNDIVIDED	COUNTY	CENTER HILL	D	23,100	6,371	0.28	B	1,200	235	288	0.24	B	6.50%	23,100	8,729	0.38	C	1,200	322	395	0.33	B
3553130	368		SUMTER	30	0.51	CR 48 (Florida St)	US 301/SR 35 (Noble Ave)	C-476 W	2	2	URBAN	UNDIVIDED	COUNTY	BUSHNELL	D	10,360	3,545	0.34	C	525	140	219	0.42	C	1.00%	10,360	3,726	0.36	C	525	147	230	0.44	C
3553140	54		SUMTER	55	2.75	C-469	CR 728	C-48 E	2	2	RURAL	UNDIVIDED	COUNTY	CENTER HILL	D	9,940	2,766	0.28	C	518	159	83	0.31	C	7.50%	9,940	3,971	0.40	C	518	228	119	0.44	C
3553150	452		SUMTER	55																														



Sumter County CMP Database

SEGMENT ID	COUNTY STATION	FOOT STATION	DATA SOURCE	SPEED LIMIT	SEGMENT LENGTH (MI)	ROAD NAME	FROM	TO	LANES (2019)	LANES (2024)	URBAN / RURAL	DIVIDED / UNDIVIDED	MAINTAINING AGENCY	JURISDICTION	ADOPTEE LOS STANDARD	DAILY SERVICE VOLUME	2019 AADT	2019 DAILY VIC	2019 DAILY LOS	PEAK HOUR DIRECTIONAL SERVICE VOLUME	2019 PEAK HOUR NB/EB VOLUME	2019 PEAK HOUR SB/WB VOLUME	2019 PEAK HOUR VIC	2019 PEAK HOUR LOS	GROWTH RATE	DAILY SERVICE VOLUME (2024)	2024 AADT	2024 DAILY VIC	2024 DAILY LOS	PEAK HOUR DIRECTIONAL SERVICE VOLUME (2024)	2024 PEAK HOUR NB/EB VOLUME	2024 PEAK HOUR SB/WB VOLUME	2024 PEAK HOUR VIC	2024 PEAK HOUR LOS
6000015	348		SUMTER	35	0.43	BUENA VISTA BLVD	SR 44	C-44A	4	4	URBAN	DIVIDED	COUNTY	WILDWOOD	D	29,160	12,447	0.43	C	1,467	599	598	0.41	C	1.00%	29,160	13,082	0.45	D	1,467	630	629	0.43	C
6000020	220		NO COUNT	30	0.09	MARIPOSA WAY	C-466E	500 FT SOUTH MARIPOSA WAY	2	2	URBAN	UNDIVIDED	COUNTY	UNINCORPORATED SUMTER COUNTY	D	13,320	3,571	0.27	C	675	205	133	0.30	C	6.50%	13,320	4,893	0.37	C	675	281	182	0.42	C
6000030	185		SUMTER	30	0.36	BELVEDERE BLVD	C-466E	CHURCHILL DOWNS	2	2	URBAN	UNDIVIDED	COUNTY	UNINCORPORATED SUMTER COUNTY	D	13,320	11,502	0.86	D	675	586	614	0.91	D	1.25%	13,320	12,239	0.92	D	675	624	653	0.97	D
6000035	187		SUMTER	30	1.33	BELVEDERE BLVD	CHURCHILL DOWNS	BUENA VISTA BLVD	2	2	URBAN	UNDIVIDED	COUNTY	UNINCORPORATED SUMTER COUNTY	D	13,320	7,855	0.59	D	675	422	359	0.63	D	5.75%	13,320	10,388	0.78	D	675	558	475	0.83	D
6000045	329		SUMTER	20	0.51	BONITA BLVD	CANAL ST	MORSE BLVD N	2	2	URBAN	UNDIVIDED	COUNTY	UNINCORPORATED SUMTER COUNTY	D	13,320	3,804	0.29	C	675	193	169	0.29	C	7.00%	13,320	5,335	0.40	C	675	271	237	0.40	C
6000050	326		SUMTER	20	0.52	BONITA BLVD	BUENA VISTA BLVD	CANAL ST	2	2	URBAN	UNDIVIDED	COUNTY	UNINCORPORATED SUMTER COUNTY	D	13,320	4,349	0.33	C	675	218	228	0.34	C	2.25%	13,320	4,861	0.36	C	675	244	255	0.38	C
6000055	216		SUMTER	25	0.49	CANAL ST	C-466A	ODELL CIR (S)	2	2	URBAN	UNDIVIDED	COUNTY	UNINCORPORATED SUMTER COUNTY	D	13,320	3,571	0.27	C	675	205	133	0.30	C	6.50%	13,320	4,893	0.37	C	675	281	182	0.42	C
6000060	213		SUMTER	20	0.63	CANAL ST	ODELL CIR (S)	BONITA BLVD	2	2	URBAN	UNDIVIDED	COUNTY	UNINCORPORATED SUMTER COUNTY	D	13,320	5,199	0.39	C	675	239	242	0.36	C	8.00%	13,320	7,639	0.57	D	675	351	356	0.53	D
6000065	204		SUMTER	30	0.97	CANAL ST	BONITA BLVD	ODELL CIR (N)	2	2	URBAN	UNDIVIDED	COUNTY	UNINCORPORATED SUMTER COUNTY	D	13,320	5,629	0.42	C	675	224	297	0.44	C	4.25%	13,320	6,931	0.52	D	675	276	366	0.54	D
6000070	198		SUMTER	35	0.76	CANAL ST	ODELL CIR (N)	STILLWATER TRL	2	2	URBAN	UNDIVIDED	COUNTY	UNINCORPORATED SUMTER COUNTY	D	13,320	5,490	0.41	C	675	258	274	0.41	C	2.75%	13,320	6,288	0.47	C	675	295	314	0.47	C
6000080	195		NO COUNT	25	0.62	CHURCHILL DOWNS	BELVEDERE BLVD	MORVEN PARKWAY	2	2	URBAN	UNDIVIDED	COUNTY	UNINCORPORATED SUMTER COUNTY	D	13,320	7,855	0.59	D	675	422	359	0.63	D	5.75%	13,320	10,388	0.78	D	675	558	475	0.83	D
6000085	275		SUMTER	35	2.00	NE 90TH ST (CR 100)	TERMINUS (Lake Ella Rd)	C-466	2	2	URBAN	UNDIVIDED	COUNTY	UNINCORPORATED SUMTER COUNTY	D	10,360	2,080	0.20	C	525	82	141	0.27	C	6.75%	10,360	2,883	0.28	C	525	114	195	0.37	C
6000090	69	188040	FDOT	35	0.23	LYNNHAVEN LN	C-472	CHURCHILL DOWNS	2	2	URBAN	UNDIVIDED	COUNTY	UNINCORPORATED SUMTER COUNTY	D	13,320	2,780	0.21	C	675	100	140	0.21	C	1.00%	13,320	2,922	0.22	C	675	105	147	0.22	C
6000095	72		NO COUNT	35	0.30	LYNNHAVEN LN	CHURCHILL DOWNS	BELVEDERE BLVD	2	2	URBAN	UNDIVIDED	COUNTY	UNINCORPORATED SUMTER COUNTY	D	13,320	6,737	0.51	D	675	302	265	0.45	C	1.50%	13,320	7,258	0.54	D	675	325	285	0.48	C
6000100	246		SUMTER	25	0.44	ODELL CIRCLE	BUENA VISTA BLVD (S)	BACKWATER WAY	2	2	URBAN	UNDIVIDED	COUNTY	UNINCORPORATED SUMTER COUNTY	D	13,320	6,186	0.46	C	675	295	304	0.45	C	7.25%	13,320	8,778	0.66	D	675	419	431	0.64	D
6000105	240		SUMTER	35	0.38	ODELL CIRCLE	CANAL ST (S)	ARVIN LN	2	2	URBAN	UNDIVIDED	COUNTY	UNINCORPORATED SUMTER COUNTY	D	13,320	6,734	0.51	D	675	310	315	0.47	C	8.25%	13,320	10,010	0.75	D	675	461	468	0.69	D
6000110	231		SUMTER	25	0.51	ODELL CIRCLE	MORSE BLVD N (S)	STILLWATER TRL	2	2	URBAN	UNDIVIDED	COUNTY	UNINCORPORATED SUMTER COUNTY	D	13,320	5,866	0.44	C	675	245	319	0.47	C	3.00%	13,320	6,800	0.51	D	675	284	370	0.55	D
6000115	482		SUMTER	30	1.55	ODELL CIRCLE	STILLWATER TRL	MORSE BLVD N (N)	2	2	URBAN	UNDIVIDED	COUNTY	UNINCORPORATED SUMTER COUNTY	D	13,320	9,051	0.68	D	675	473	406	0.70	D	1.00%	13,320	9,513	0.71	D	675	497	427	0.74	D
6000120	228		SUMTER	30	0.31	ODELL CIRCLE	MORSE BLVD N (N)	CANAL ST (N)	2	2	URBAN	UNDIVIDED	COUNTY	UNINCORPORATED SUMTER COUNTY	D	13,320	4,993	0.37	C	675	297	282	0.44	C	1.00%	13,320	5,248	0.39	C	675	312	296	0.46	C
6000125	222		SUMTER	30	0.36	ODELL CIRCLE	CANAL ST (N)	BUENA VISTA BLVD (N)	2	2	URBAN	UNDIVIDED	COUNTY	UNINCORPORATED SUMTER COUNTY	D	13,320	4,909	0.37	C	675	250	270	0.40	C	7.00%	13,320	6,885	0.52	D	675	351	379	0.56	D
6000130	264		SUMTER	20	0.39	STILLWATER TRL	MORSE BLVD	CANAL ST	4	4	URBAN	DIVIDED	COUNTY	UNINCORPORATED SUMTER COUNTY	D	29,160	11,306	0.39	C	1,467	490	540	0.37	C	4.75%	29,160	14,259	0.49	D	1,467	618	681	0.46	D
6000135	261		SUMTER	35	0.35	STILLWATER TRL	BUENA VISTA BLVD	CANAL ST	4	4	URBAN	DIVIDED	COUNTY	UNINCORPORATED SUMTER COUNTY	D	29,160	11,678	0.40	C	1,467	512	542	0.37	C	2.00%	29,160	12,893	0.44	C	1,467	565	598	0.41	C
6000145	454		SUMTER	35	0.51	CR 139 (Powell Rd)	SR 44	C-44A	4	4	URBAN	DIVIDED	COUNTY	WILDWOOD	D	30,780	10,667	0.35	C	1,549	542	451	0.35	C	1.00%	30,780	11,211	0.36	C	1,549	570	474	0.37	C
32230001	116		SUMTER	40	0.63	CR 673	SR 674	US 301/SR 35	2	2	RURAL	UNDIVIDED	COUNTY	UNINCORPORATED SUMTER COUNTY	C	16,400	2,198	0.13	B	850	103	68	0.12	B	4.75%	16,400	2,772	0.17	B	850	130	86	0.15	B
32531601	430	180088	FDOT	50	5.60	US 301/SR 35	C-542	C-470 E (S)	2	2	URBAN	UNDIVIDED	STATE	UNINCORPORATED SUMTER COUNTY	D	24,200	6,543	0.27	B	1,190	226	349	0.29	B	4.00%	24,200	7,961	0.33	B	1,190	274	425	0.36	C
32531602	428	180001 180042	FDOT	55	1.36	US 301/SR 35	C-476	C-542	2	2	URBAN	UNDIVIDED	STATE	BUSHNELL	D	14,160	5,336	0.38	C	704	202	263	0.37	C	4.00%	14,160	6,492	0.46	C	704	245	320	0.45	C
32532601	400	185008	FDOT	40	1.28	US 301/SR 35	C-466A (Cleveland Ave)	C-462 (S)	4	4	URBAN	DIVIDED	STATE	WILDWOOD	D	39,800	20,957	0.53	C	2,000	913	788	0.46	C	3.50%	39,800	24,890	0.63	C	2,000	1,084	936	0.54	C
32533001	420	180210	FDOT	45	1.26	US 301/SR 35	C-472	C-466	4	4	URBAN	DIVIDED	STATE	WILDWOOD	D	41,790	24,943	0.60	C	2,100	1,136	979	0.54	C	4.25%	41,790	30,713	0.73	C	2,100	1,399	1,205	0.67	C
32533101	440	180100	FDOT	45	0.75	US 301/SR 35	C-466	CR 204	4	4	URBAN	DIVIDED	STATE	WILDWOOD	D	39,800	21,071	0.53	C	2,000	962	829	0.48	C	5.25%	39,800	27,214	0.68	C	2,000	1,242	1,071	0.62	C
32533102	450	180100	FDOT	45	1.52	US 301/SR 35	CR 204	MARION COUNTY BOUNDARY	4	4	URBAN	DIVIDED	STATE	WILDWOOD	D	39,800	21,071	0.53	C	2,000	962	829	0.48	C	5.25%	39,800	27,214	0.68	C	2,000	1,242	1,071	0.62	C
33000001	289		SUMTER	20	0.33	BUENA VISTA BLVD	BELVEDERE BLVD	TALL TREES LN	4	4	URBAN	DIVIDED	COUNTY	UNINCORPORATED SUMTER COUNTY	D	29,160	20,031	0.69	D	1,467	970	896	0.66	D	4.00%	29,160	24,371	0.84	D	1,467	1,180	1,090	0.80	D
33000002	286		SUMTER	35	0.23	BUENA VISTA BLVD	TALL TREES LN	LAUREL MANOR DR	4	4	URBAN	DIVIDED	COUNTY	UNINCORPORATED SUMTER COUNTY	D	29,160	18,934	0.65	D	1,467	888	878	0.61	D	1.00%	29,160	19,900	0.68	D	1,467	933	923	0.64	D
33000003	283		SUMTER	35	0.15	BUENA VISTA BLVD	LAUREL MANOR DR	C-466	4	4	URBAN	DIVIDED	COUNTY	UNINCORPORATED SUMTER COUNTY	D	29,160	17,836	0.61	D	1,467	806	860	0.59	D	1.00%	29,160	18,746	0.64	D	1,467	847	904	0.62	D
35270001	56	188014	FDOT	55	2.45	US 301/SR 35	US 301/SR 35	NE 50TH WAY	2	2	URBAN	UNDIVIDED	COUNTY	UNINCORPORATED SUMTER COUNTY	D	24,200	8,979	0.37	C	1,190	339	393	0.33	B	9.00%	24,200	13,815	0.57	C	1,190	522	605	0.51	C
35270002	58		SUMTER	55	1.49	C-470 E	NE 50TH WAY	CR 501	2	2	URBAN	UNDIVIDED	COUNTY	WILDWOOD	D	24,200	9,939	0.41	C	1,190	443	345	0.37	C	8.75%	24,200	15,118	0.62	C	1,190	674	525	0.57	C
35270003	59		SUMTER	55	2.56	C-470 E	CR 501	LAKE COUNTY BOUNDARY	2	2	URBAN	UNDIVIDED	COUNTY	WILDWOOD	D	24,200	10,669	0.44	C	1,190	504	407	0.42	C										

### Sumter County CMP Database

SEGMENT ID	COUNTY STATION	FDOT STATION	DATA SOURCE	SPEED LIMIT	SEGMENT LENGTH (MI)	ROAD NAME	FROM	TO	LANES (2019)	LANES (2024)	URBAN / RURAL	DIVIDED / UNDIVIDED	MAINTAINING AGENCY	JURISDICTION	ADOPTED LOS STANDARD	DAILY SERVICE VOLUME	2019 AADT	2019 DAILY V/C	2019 DAILY LOS	PEAK HOUR DIRECTIONAL SERVICE VOLUME	2019 PEAK HOUR NB/EB VOLUME	2019 PEAK HOUR SB/WB VOLUME	2019 PEAK HOUR V/C	2019 PEAK HOUR LOS	GROWTH RATE	DAILY SERVICE VOLUME (2024)	2024 AADT	2024 DAILY V/C	2024 DAILY LOS	PEAK HOUR DIRECTIONAL SERVICE VOLUME (2024)	2024 PEAK HOUR NB/EB VOLUME	2024 PEAK HOUR SB/WB VOLUME	2024 PEAK HOUR V/C	2024 PEAK HOUR LOS
400100012	276		SUMTER	35	2.01	CR 103	WOODRIDGE DR	CR 102	2	2	URBAN	UNDIVIDED	COUNTY	WILDWOOD	D	10,360	3,720	0.36	C	525	196	162	0.37	C	7.75%	10,360	5,403	0.52	D	525	285	235	0.54	D



*Commissioner Nick Maddox  
Chair*

## **MPOAC Legislative Newsletter** **02/01/2020**

### Overview

Greetings once again on this beautiful Saturday! This week MPOAC held quarterly meetings in Orlando and it was great to see everyone. At the meetings we reviewed some of the pieces of legislation and from comments received there are some changes in red in the back of the newsletter.

Earlier this week I had the opportunity to visit with the Governor's Director of Legislative Affairs, Ms. Stephanie Kopelousos. For those of you who have been in transportation for some time, you will remember this name, she was the Secretary of Transportation previously. In the room was also the Florida League of Cities, the Florida Association of Counties and representatives of local government. The talk really seemed to focus on the short-term rentals bill, teacher pay and local preemption efforts by the legislature. Transportation was a not a big topic, we are comfortably not in the spotlight.

Last week we mentioned SB 1000 and HB 1371, the bills addressing safety at mid-block crossings. Both bills passed a committee this week. In fact the bills passed easily, so they both seem to be moving along. The Senate staff analysis stated that in two projects where Florida DOT installed mid-block crossings with full signals the costs were \$368K for one signal at a crossing and at another location a project with 5 signals along a corridor, the installation costs were \$1M. The financial impact to local governments, and Florida DOT, could be very substantial. My compliments to Mr. Jeff Branch, who testified in the Senate Committee meeting and asked that engineering reviews be used to determine if a full signal is appropriate. Senator Perry, the bill sponsor in the Senate, sounded agreeable to this approach. We are anxiously awaiting to see an amendment and how that amendment is worded.

Something always important to each legislative session is the budget. It is a core function of the legislature. Both the House and Senate released their proposed budgets this week. The Senate version is larger than the House version at a proposed \$92.8B. That is about \$1.8B more than the current year budget. The House version comes in at \$91.3B. These two budget proposals are fairly close to each other and that is a positive sign that differences can be worked out between the two chambers. We will have to watch this and see what agreements are reached.

I would add more to this week's newsletter, but the Florida DOT building is testing the fire alarms this Saturday morning. It is good to do such things when the building is not full of employees, but for the very few of us here, it is terribly distracting and annoying. Let's make this a short read this fine Saturday. Make sure you get out early and grab your snacks for tomorrow's Super Bowl. Even if you don't have a team playing on the field, watching for the humorous commercials is entertaining.

---

*Carl Mikyska, Executive Director*

605 Suwannee Street, MS 28B · Tallahassee, Florida 32399-0450  
1-866-374-3368 x 4037 or 850-414-4062 · Fax 850-414-4895

[www.mpoac.org](http://www.mpoac.org)

Several transportation related bills are up in committee this week, details are shown with each bill on the following pages, look for the text in **RED**. The regular session began on January 14<sup>th</sup> and our capitol is a busy place once again. Bills appearing before a committee are shown in the bill details in **RED**. All new bills and any updates to bills shown below will be shown in **RED** so you can quickly distinguish between updates and old news. Your MPOAC Legislative Update will keep you apprised of newly filed bills and changes to existing bills.

Grab a cup of coffee and enjoy this edition of the MPOAC Legislative Update.

### **Important Dates for the 2020 Legislative Session**

- August 01, 2019 – Deadline for filing claim bills.
- November 22, 2019 - Deadline for submitting requests for drafts of general bills and joint resolutions, including requests for companion bills.
- January 10, 2020 - Deadline for approving final drafts of general bills and joint resolutions, including companion bills.
- January 14, 2020 - Regular Session convenes, deadline for filing bills for introduction.
- February 29, 2020 - All bills are immediately certified, motion to reconsider made and considered the same day.
- March 03, 2020 – 50<sup>th</sup> day of Session. Last day for regularly scheduled committee meetings.
- March 13, 2020 – 60<sup>th</sup> day - Last day of Regular Session.

## Legislation of interest to the membership

This is a summary of transportation related bills filed and published on the legislature's website as of January 31, 2020. More bills will be filed during the 2020 session and as they are made available the newly filed transportation bills will be added to this list. The bills are listed in numerical order for your convenience. As the session progresses and the number of bills tracked in this newsletter grows, this ordering of bills will make it easier to follow the status of any bill you are tracking. All new bills and any updates to bills shown below will be shown in **RED** so you can quickly distinguish between updates and old news.

**HB 37: School Bus Safety – (Zika; Co-Introducers: DiDeglie; Grieco)** – Identical Bill SB 290 by Hooper. Revises civil penalties for certain violations relating to stopping for a school bus. Filed in the House. Referred to Transportation and Infrastructure Subcommittee; Transportation and Tourism Appropriations Subcommittee; State Affairs Committee. Favorable by Transportation and Infrastructure Subcommittee; YEAS 13 NAYS 0. Now in Transportation and Tourism Appropriations Subcommittee. Favorable by Transportation and Tourism Appropriations Subcommittee; YEAS 10 NAYS 0. Now in State Affairs Committee. Passed State Affairs Committee, YEAS 23 NAYS 0, next stop House Floor for a full vote.

**SB 76: Transportation Disadvantaged – (Book)** – Similar to HB 551 by Jenne. Requiring community transportation coordinators, in cooperation with the coordinating board, to plan for and use any available and cost-effective regional fare payment systems that enhance cross-county mobility for specified purposes for the transportation disadvantaged; requiring each coordinating board to evaluate multicounty or regional transportation opportunities to include any available regional fare payment systems that enhance cross-county mobility for specified purposes for the transportation disadvantaged, etc. Referred to Infrastructure and Security; Appropriations Subcommittee on Transportation, Tourism, and Economic Development; Appropriations. On Committee agenda-- Infrastructure and Security, 01/27/20, 4:00 pm, 110 Senate. **Favorable by Infrastructure and Security; YEAS 7 NAYS 0. Now in Appropriations Subcommittee on Transportation, Tourism, and Economic Development**

**SB 126: Sales and Use Tax – (Gruters; Co-Introducers: Hooper; Gainer; Baxley; Perry; Harrell; Albriton)** – Similar to HB 159 by Clemons. Revising the definition of the term “retail sale”; renaming the term “mail order sale” to “remote sale” and revising the definition; revising conditions under which certain dealers are subject to sales tax levies and collection; providing that certain marketplace providers are subject to registration, collection, and remittance requirements for sales taxes, etc. This bill will require a sales tax to be collected on online purchases that are delivered to a Florida address and the bill requires that both a state sales tax and the local option surtaxes to be collected by online retailers. Referred to Commerce and Tourism; Finance and Tax; Appropriations. Favorable by Commerce and Tourism; YEAS 5 NAYS 0. Now in Finance and Tax.

**HB 133: Towing and Immobilizing Vehicles and Vessels – (McClain)** – Similar to SB 1332 by Hooper. Authorizes local governments to enact rates to tow vessels on private property & remove & store vessels; prohibits counties or municipalities from enacting ordinances that impose costs or penalties on owners, persons in control, or lienholders of vehicles or vessels or that require wrecker operators or towing businesses to accept specified form of payment; authorizes persons to place liens on vehicles or vessels to recover fees or charges; removes requirement regarding notices & signs concerning towing or removal of vehicles & vessels & liability for attorney fees; authorizes court to award damages, attorney fees, & court costs in

certain cases. Filed in the House. On Committee agenda-- Local, Federal and Veterans Affairs Subcommittee, 10/23/19, 9:00 am, 12 HOB. Favorable by Local, Federal and Veterans Affairs Subcommittee; YEAS 9 NAYS 5. Now in Business and Professions Subcommittee. Favorable by Business and Professions Subcommittee; YEAS 10 NAYS 2. Now in State Affairs Committee. **Passed State Affairs Committee; YEAS 16 NAYS 7. Next stop is a full House Floor vote.**

**SB 158: Child Restraint Requirements – (Perry)** – Identical Bill HB 533 by Beltran.

Increasing the age of children for whom operators of motor vehicles must provide protection by using a crash-tested, federally approved child restraint device; increasing the age of children for whom a separate carrier, an integrated child seat, or a child booster seat may be used, etc.

Referred to Children, Families, and Elder Affairs; Infrastructure and Security; Rules. Favorable by Children, Families, and Elder Affairs; YEAS 6, NAYS 0. Now in Infrastructure and Security. On Committee agenda-- Infrastructure and Security, 01/21/20, 4:30 pm, 110 Senate Building. Favorable by Infrastructure and Security; YEAS 7 NAYS 0. Now in Rules.

**HB 159: Sales and Use Tax – (Clemons)** – Similar to SB 126 by Gruters. Revises conditions under which certain dealers are subject to sales tax; deletes exemption for certain dealers from collecting local option surtaxes; provides that certain marketplace providers are subject to registration, collection, & remittance requirements for sales taxes; requires marketplace providers to provide certification to marketplace sellers; specifies requirements for marketplace sellers; requires marketplace providers to allow DOR to audit books & records; provides that marketplace seller is liable for sales tax collection & remittance; authorizes marketplace providers & marketplace sellers to enter into agreements to recover certain taxes, interest, & penalties; grants DOR settlement & compromise authority for marketplace sales; deletes authority of DOR to negotiate collection allowance with certain dealers. Referred to Ways and Means Committee; Commerce Committee; Appropriations Committee.

**SB 178: Public Financing of Construction Projects – (Rodriguez)** – Identical to HB 579 by Aloupis. Prohibiting state-financed constructors from commencing construction of certain structures in coastal areas without first conducting a sea level impact projection study; requiring the Department of Environmental Protection to develop by rule a standard for such studies; requiring the department to enforce certain requirements and to adopt rules, etc. Referred to Environment and Natural Resources; Infrastructure and Security; Appropriations Subcommittee on Agriculture, Environment, and General Government; Appropriations. Favorable by Environment and Natural Resources; YEAS 5 NAYS 0. Now in Infrastructure and Security. Favorable CS by Infrastructure and Security; YEAS 7 NAYS 0. Now in Appropriations Subcommittee on Agriculture, Environment, and General Government.

**HB 179: Safety Belt Usage – (Slosberg)** – Requires each passenger in a motor vehicle or autocycle to be restrained by a safety belt or child restraint device. Filed in the House. Referred to Transportation and Infrastructure Subcommittee; Transportation and Tourism Appropriations Subcommittee; State Affairs Committee.

**SB 216: Assistance for Micro Businesses – (Rodriguez)** – Authorizing certain local governments to set aside up to a specified percentage of funds for procuring personal property and services for the purpose of entering into contracts with micro businesses; providing eligibility for micro businesses under the Microfinance Loan Program; providing eligibility for micro businesses under the Department of Transportation's highway project business development program, etc. Referred to Innovation, Industry, and Technology; Infrastructure and Security; Appropriations.

**HB 249: Use of Wireless Communications Devices While Driving – (Slosberg)** - Revises short title & legislative intent; prohibits operation of motor vehicle while holding or touching wireless communications device; provides exceptions; revises circumstances under which certain information may be admissible as evidence in proceeding to determine whether violation has been committed; revises procedures for collection & reporting by DHSMV of information recorded on citation; conforms provisions relating to use of wireless communications devices in school & work zones. Referred to Transportation and Infrastructure Subcommittee; Transportation and Tourism Appropriations Subcommittee; State Affairs Committee.

**HB 279: Local Government Public Construction Works – (Smith, D.; Co-Introducers: Sabatini)** - Similar to SB 504 by Perry. Requires local governing board to consider estimated costs of certain projects when making specified determination; requires local government that performs project using its own services, employees, & equipment to disclose costs of project after completion to Auditor General; requires Auditor General to review such disclosures as part of routine audits of local governments. Referred to Oversight, Transparency and Public Management Subcommittee; Business and Professions Subcommittee; State Affairs Committee. **Passed Oversight, Transparency and Public Management Subcommittee; YEAS 11 NAYS 3. On Committee agenda-- Business and Professions Subcommittee, 02/04/20, 12:00 pm, Webster Hall.**

**SB 290: School Bus Safety – (Zika; Co-Introducers: DiDeglie; Grieco)** – Identical Bill HB 37 by Zika. Revises civil penalties for certain violations relating to stopping for a school bus. Filed in the Senate. Referred to Infrastructure and Security; Judiciary; Rules. On Committee agenda-- Infrastructure and Security, 01/21/20, 4:30 pm, 110 Senate Building. Favorable by Infrastructure and Security; YEAS 7 NAYS 0. Now in Judiciary. **On Committee agenda-- Judiciary, 02/04/20, 12:30 pm, 110 Senate Building**

**SB 308: Traffic Offenses – (Baxley)** – Similar to HB 455 by McClain. Citing this act as the "Vulnerable Road User Act"; providing criminal penalties for a person who commits a moving violation that causes serious bodily injury to, or causes the death of, a vulnerable road user; requiring that the person who commits the moving violation pay a specified fine, serve a minimum period of house arrest, and attend a driver improvement course; requiring that the court revoke the person's driver license for a minimum specified period, etc. Filed in the Senate. Referred to Infrastructure and Security; Appropriations Subcommittee on Transportation, Tourism, and Economic Development; Appropriations.

**SB 368: Tampa Bay Area Regional Transit Authority – (Rouson)** - Similar to HB 503 by Diamond. Authorizing certain mayors who are members of the governing board of the Tampa Bay Area Regional Transit Authority to appoint a designee to attend a board meeting to act in his or her place with full voting rights on all issues; requiring the designee to be an elected official of the governing body of the mayor's municipality, etc. Referred to Infrastructure and Security; Community Affairs; Rules. On Committee agenda-- Infrastructure and Security, 01/27/20, 4:00 pm, 110 Senate. **Passed Infrastructure and Security; YEAS 7 NAYS 0. Now in Community Affairs**

**HB 377: Motor Vehicle Rentals – (Latvala)** - Identical to SB 478 by Perry. Motor Vehicle Rentals; Requires specified surcharges to be imposed upon lease or rental of certain motor vehicle if facilitated by car-sharing service, motor vehicle rental company, or peer-to-peer vehicle-sharing program under certain circumstances; provides financial responsibility & insurance requirements; requires notification of implications of lien; provides recordkeeping requirements; provides responsibility for equipment; provides requirements relating to automobile safety recalls; provides driver license verification and retention requirements. Referred to Transportation and Infrastructure Subcommittee; Ways and Means Committee; State



Affairs Committee. **On Committee agenda-- Transportation and Infrastructure Subcommittee, 02/04/20, 12:00 pm, Reed Hall**

**SB 378: Motor Vehicle Insurance – (Lee)** – Similar to HB 771 by Grall. Repealing provisions which comprise the Florida Motor Vehicle No-Fault Law; revising the motor vehicle insurance coverages that an applicant must show to register certain vehicles with the Department of Highway Safety and Motor Vehicles; revising garage liability insurance requirements for motor vehicle dealer applicants; revising minimum liability coverage requirements for motor vehicle owners or operators, etc. APPROPRIATION: \$83,651. Referred to Infrastructure and Security; Banking and Insurance; Appropriations. **On Committee agenda-- Infrastructure and Security, 01/21/20, 4:30 pm, 110 Senate Building. Favorable by Infrastructure and Security; YEAS 6 NAYS 1. Now in Banking and Insurance**

**HB 395: Transportation – (Andrade)** - Similar to SB 1172 by Albritton. Revises requirements for determining salaries of secretary of DOT & assistant secretaries; revises time period during which sealed bids, proposals, or replies received by DOT are exempt from public records requirements; authorizes certain vehicles to show or display certain lights; requires certain contractors to be certified by DOT as qualified; revises financial statements required to accompany an application for certification; specifies conditions under which limitation on liability of DOT for personal injury, property damage, or death applies; authorizes Governor to suspend payment of tolls when necessary to assist emergency evacuation & override automatic reinstatement of tolls. Filed in the House. Referred to Transportation and Infrastructure Subcommittee; Transportation and Tourism Appropriations Subcommittee; State Affairs Committee. **On Committee agenda-- Transportation and Infrastructure Subcommittee, 01/28/20, 12:00 pm, Reed Hall. Passed Transportation and Infrastructure Subcommittee; YEAS 13 NAYS 0.**

**SB 452: Electric Vehicle Charging Stations – (Rodriguez)** - Identical to HB 943 by Daley. Similar to SB 7018 – Committee Bill. Requiring the Department of Transportation, in coordination with the Office of Energy within the Department of Agriculture and Consumer Services and the Florida Clean Cities Coalitions, or other appropriate entities, to develop and adopt by a specified date a master plan for electric vehicle charging stations on the state highway system, etc. Referred to Infrastructure and Security; Appropriations Subcommittee on Transportation, Tourism, and Economic Development; Appropriations’

**HB 455: Traffic Offenses – (McClain)** – Similar to SB 308 by Baxley. Provides criminal penalties for a person who commits a moving violation that causes serious bodily injury to, or causes the death of, a vulnerable road user; requires person to pay a specified fine, serve a minimum period of house arrest, and attend a driver improvement course; requires court to revoke the person’s driver license for a minimum specified period; defines “vulnerable road user.” Filed in the House. Referred to Transportation and Infrastructure Subcommittee; Criminal Justice Subcommittee; State Affairs Committee.

**HB 465: High-Speed Passenger Rail Safety – (Sirois)** – Identical to SB 676 by Mayfield. Provides for regulation of railroad companies; requires training for local emergency services under certain circumstances; provides requirements for railroad company reporting & DOT website publication; provides minimum safety standards for high-speed passenger rail; designates responsibility for maintenance of certain safety improvements; provides safety inspection requirements; requires certain fencing; provides liability for failure to construct or maintain fencing; provides for enforcement. Filed in the House. Referred to Transportation and Infrastructure Subcommittee; Transportation and Tourism Appropriations Subcommittee; State.

**SB 478: Motor Vehicle Rentals – (Perry)** - Identical to HB 377 by Latvala. Motor Vehicle Rentals; Requires specified surcharges to be imposed upon lease or rental of certain motor vehicle if facilitated by car-sharing service, motor vehicle rental company, or peer-to-peer vehicle-sharing program under certain circumstances; provides financial responsibility & insurance requirements; requires notification of implications of lien; provides recordkeeping requirements; provides responsibility for equipment; provides requirements relating to automobile safety recalls; provides driver license verification and retention requirements. Filed in the Senate. Referred to Innovation, Industry, and Technology; Banking and Insurance; Appropriations. On Committee agenda-- Innovation, Industry, and Technology, 01/27/20, 1:30 pm, 110 Senate Building. **Passed Innovation, Industry, and Technology; YEAS 9 NAYS 0. On Committee agenda-- Banking and Insurance, 02/04/20, 12:30 pm, 412 Knott Building**

**HB 503: Tampa Bay Area Regional Transit Authority Governing Board – (Diamond)** – Similar to SB 368 by Rouson. Authorizes mayor's designated alternate to serve as member of board; provides membership requirements; specifies designated alternate's right to vote; authorizes members to attend meeting physically, telephonically, or electronically in order to constitute quorum; provides requirements for telephonic or electronic attendance. Filed in the House. Referred to Transportation and Infrastructure Subcommittee; State Affairs Committee. **On Committee agenda-- Transportation and Infrastructure Subcommittee, 02/04/20, 12:00 pm, Reed Hall**

**SB 504: Local Government Public Construction Works – (Perry)** – Similar to HB 279 by Smith. Requiring the governing board of a local government to consider estimated costs of certain projects using generally accepted cost-accounting principles that account for specified costs when the board is making a specified determination; prohibiting a local government from performing a project using its own services, employees, and equipment if the project requires an increase in the number of government employees or an increase in certain capital expenditures, etc. Filed in the Senate. Referred to Community Affairs; Governmental Oversight and Accountability; Rules. Favorable by Community Affairs; YEAS 5 NAYS 0. Now in Governmental Oversight and Accountability. Passed Governmental Oversight and Accountability; YEAS 5 NAYS 0. Now in Rules. CS by Governmental Oversight and Accountability read 1st time

**HB 533: Child Restraint Requirements – (Beltran)** – Identical to SB 158 by Perry. Requires sea level impact projection study of state-financed coastal structures before construction begins; requires DEP to develop study standards, publish studies on its website, enforce requirements, & adopt rules. Filed in the House. Referred to Transportation and Infrastructure Subcommittee; Children, Families and Seniors Subcommittee; State Affairs Committee. **On Committee agenda-- Transportation and Infrastructure Subcommittee, 02/04/20, 12:00 pm, Reed Hall**

**HB 551: Transportation Disadvantaged – (Jenne; Co-Introducer Eskamani)** – Similar to SB 76 by Book. Requires increase & support of programs that enhance cross-county mobility for specified purposes for transportation disadvantaged; requires evaluation of multicounty or regional transportation opportunities to increase & support such programs; requires Commission for Transportation Disadvantaged to develop disability sensitivity training program & A Ride Away Program; provides program requirements; requires possession of certain identification issued by commission; requires motor vehicles used to provide transportation disadvantaged services to be equipped with cameras & GPS.. Filed in the House. Referred to Transportation and Infrastructure Subcommittee; Transportation and Tourism Appropriations Subcommittee; State Affairs Committee. Passed Transportation and Infrastructure Subcommittee; YEAS 15 NAYS 0. Removed reference to Transportation and Tourism Appropriations Subcommittee.

Referred to State Affairs Committee. Now in State Affairs Committee. **Passed State Affairs Committee; YEAS 22 NAYS 0. Next stop is a full House Floor vote.**

**HB 579: Public Financing of Construction Projects – (Aloupis)** – Identical to SB 178 by Roriguez. Requires sea level impact projection study of state-financed coastal structures before construction begins; requires DEP to develop study standards, publish studies on its website, enforce requirements, & adopt rules. Filed in the House. Referred to Agriculture and Natural Resources Subcommittee; Appropriations Committee; State Affairs Committee. **On Committee agenda-- Agriculture and Natural Resources Subcommittee, 02/04/20, 12:00 pm, 12 HOB.**

**HB 585: Pay-for-success Contracts – (Ausley)** – Identical to SB 1182 by Montford. Authorizing a state agency to enter into a pay-for-success contract with a private entity under certain conditions, subject to an appropriation and specified language in the General Appropriations Act; authorizing cancellation of the contract under specified circumstances; specifying services and programs eligible for funding under the contract; prohibiting a private entity from viewing or receiving certain information that is otherwise confidential and exempt from public records requirements, etc. Referred to Oversight, Transparency and Public Management Subcommittee; Appropriations Committee; State Affairs Committee.

**HB 657: Transportation Network Companies – (Plasencia)** – Authorizes person to establish TNC account & add authorized users to such account; provides requirements; requires TNC & TNC driver to send certain notifications to person requesting prearranged ride on behalf of authorized user; allows authorized user to view notifications; prohibits authorized user from changing certain information; requires TNC to provide human trafficking awareness training & education to employees; provides training & education requirements; limits liability of TNC in cases of human trafficking; authorizes DFS to seek court order to require TNC to comply with certain provisions; provides legislative intent & construction.. Filed in the House. Referred to Transportation and Infrastructure Subcommittee; Criminal Justice Subcommittee; State Affairs Committee. Withdrawn.

**SB 676: High-Speed Passenger Rail Safety – (Mayfield)** – Identical to HB 465 by Sirois. Provides for regulation of railroad companies; requires training for local emergency services under certain circumstances; provides requirements for railroad company reporting & DOT website publication; provides minimum safety standards for high-speed passenger rail; designates responsibility for maintenance of certain safety improvements; provides safety inspection requirements; requires certain fencing; provides liability for failure to construct or maintain fencing; provides for enforcement. Filed in the Senate. Referred to Infrastructure and Security; Appropriations Subcommittee on Transportation, Tourism, and Economic Development; Appropriations. **On Committee agenda-- Infrastructure and Security, 01/21/20, 4:30 pm, 110 Senate Building. Passed Infrastructure and Security; YEAS 7 NAYS 0. Now in Appropriations Subcommittee on Transportation, Tourism, and Economic Development**

**HB 717: Space Florida Financing – (Sirois)** – Similar to SB 1070 by Wright. Specifies bonding provisions to which Space Florida is subject; revises powers of Space Florida regarding bond issuance; removes provisions regarding presentation of bond proposals to, & approval of bond issuance by, Governor & Cabinet; revises provisions relating to securing issuance of revenue bonds; repeals provisions relating to pledging assessments & other revenues & properties as additional security on bonds, issuance of bond anticipation notes, & short-term borrowing; revises provisions relating to lien of pledges; revises bond maturity date requirements; authorizes Space Florida to validate bonds pursuant to certain provisions. Referred to Workforce Development and Tourism Subcommittee; Ways and Means Committee;



Commerce Committee. Favorable by Workforce Development and Tourism Subcommittee; YEAS 14 NAYS 0. Now in Ways and Means Committee. On Committee agenda-- Ways and Means Committee, 01/27/20, 3:30 pm, Morris Hall. **Favorable by Ways and Means Committee; YEAS 15 NAYS 0. Now in Commerce Committee.**

**HB 771: Motor Vehicle Insurance – (Grall)** – Similar to SB 378 by Lee. Repeals provisions relating Florida Motor Vehicle No-Fault Law; revises garage liability insurance requirements; revises minimum coverage requirements for proof of financial responsibility for motor vehicles; revises amount of certificate of deposit required to elect certain method of proof of financial responsibility; revises excess liability coverage requirements; revises financial responsibility requirements for owners or lessees of for-hire passenger transportation vehicles; revises coverages of motor vehicle policy which are subject to stacking prohibition; revises insurance requirements for transportation network company drivers. APPROPRIATION: \$83,651. Filed in House. **On Committee agenda-- Insurance and Banking Subcommittee, 02/04/20, 8:00 am, Sumner Hall**

**HB 829: Express Lanes – (Avila)** – Similar to SB 1090 by Diaz. Prohibits S.R. 826 from having any express lane or toll; requires express lanes that exist on such road to be immediately opened to public; requires tolls that exist on such road to be immediately removed; prohibits charges from being imposed for use of such road. Filed in House.

**HB 915: Commercial Service Airports – (Avila)** – Similar to SB 1258 by Diaz. Directs Auditor General to conduct specified audits of large-hub commercial service airports; requires governing bodies of such airports to comply with certain financial disclosure requirements; requires governing body of municipality, county, or special district that operates commercial service airport to establish & maintain website & post certain information; requires such airports to comply with certain contracting requirements; requires governing body members & employees of such airports to comply with certain ethics requirements; requires governing body members to complete annual ethics training; requires annual reports to DOT, Governor, & Legislature; prohibits expenditure of certain funds unless specified conditions are met. Filed in House. Referred to Transportation and Infrastructure Subcommittee; Transportation and Tourism Appropriations Subcommittee; State Affairs Committee. Passed Transportation and Infrastructure Subcommittee; YEAS 14 NAYS 0. Now in Transportation and Tourism Appropriations Subcommittee. On Committee agenda-- Transportation and Tourism Appropriations Subcommittee, 01/22/20, 12:30 pm, Sumner Hall. Favorable by Transportation and Tourism Appropriations Subcommittee; YEAS 11 NAYS 0. Now in State Affairs Committee

**HB 943: Electric Vehicle Charging Stations – (Daley)** – Identical to SB 452 by Rodriguez. Comparable to SB 7012 by Infrastructure and Security Committee. Defines "master plan for electric vehicle charging stations" or "master plan"; requires DOT, in coordination with Office of Energy within DACS & Florida Clean Cities Coalitions, or other appropriate entities, to develop & adopt by specified date master plan for electric vehicle charging stations on state highway system; specifies goals & objectives of master plan; requires master plan to be updated annually by specified date. Filed in House. On Committee agenda-- Transportation and Infrastructure Subcommittee, 01/28/20, 12:00 pm, Reed Hall. **Favorable by Transportation and Infrastructure Subcommittee; YEAS 11 NAYS 0. Now in Appropriations Committee**

**HB 951: Assaults on Specified Persons – (Beltran)** – Similar to SB 1416 by Perry. Requires public transit providers to post specified sign concerning assaulting transit operators; requires public transit providers to create & implement risk reduction program; revises reclassification of offense of assault on specified persons. Referred to Transportation and Infrastructure

Subcommittee; Justice Appropriations Subcommittee; State Affairs Committee. **On Committee agenda-- Transportation and Infrastructure Subcommittee, 02/04/20, 12:00 pm, Reed Hall**

**HB 969: Broadband Internet Service – (Drake – Co-Introducers: Ausley)** – Similar to SB 1166 by Albritton. Designates DEO as lead state agency to facilitate expansion of broadband Internet service in this state; requires department to work collaboratively with certain entities; creates Florida Office of Broadband within DEO; provides purpose & duties of office. Referred to Energy and Utilities Subcommittee; Transportation and Tourism Appropriations Subcommittee; Commerce Committee. **Favorable by Energy and Utilities Subcommittee; YEAS 14 NAYS 0. On Committee agenda-- Transportation and Tourism Appropriations Subcommittee, 02/03/20, 3:00 pm, Reed Hall**

**HB 971: Electric Bicycles – (Grant, M)** – Identical to SB 1148 by Brandes. Provides for rights & privileges of electric bicycles & operators; provides that electric bicycles are vehicles to same extent as bicycles; exempts electric bicycles & operators from specified provisions; requires certain labeling of electric bicycles; prohibits tampering with or modifying electric bicycles for certain purposes; requires electric bicycles to comply with specified provisions & operate in certain manner; authorizes operators to ride electric bicycles where bicycles are allowed; authorizes municipalities, counties, & agencies to regulate operation of electric bicycles under certain conditions. Referred to Transportation and Infrastructure Subcommittee; Transportation and Tourism Appropriations Subcommittee; State Affairs Committee. **On Committee agenda-- Transportation and Infrastructure Subcommittee, 01/28/20, 12:00 pm, Reed Hall. Passed Transportation and Infrastructure Subcommittee; YEAS 12 NAYS 0. On Committee agenda-- Transportation and Tourism Appropriations Subcommittee, 02/03/20, 3:00 pm, Reed Hall**

**SB 1000: Traffic and Pedestrian Safety – (Perry)** – Similar to HB 1371 by Fine. Requiring a pedestrian crosswalk on a public highway, street, or road which is located at any point other than at an intersection with another public highway, street, or road to be controlled by traffic control signal devices and pedestrian control signals that conform to specified requirements; requiring, by a specified date, the entity with jurisdiction over a public highway, street, or road with a certain pedestrian crosswalk to ensure that the crosswalk is controlled by coordinated traffic control signal devices and pedestrian control signals, etc. Referred to Infrastructure and Security; Appropriations Subcommittee on Transportation, Tourism, and Economic Development; Appropriations. **On Committee agenda-- Infrastructure and Security, 01/27/20, 4:00 pm, 110 Senate Building. Passed Infrastructure and Security; YEAS 6 NAYS 1. Now in Appropriations Subcommittee on Transportation, Tourism, and Economic Development**

**SB 1070: Space Florida – (Wright)** – Similar to HB 717 by Sirois. Clarifying that Space Florida is subject to a specified provision of law; revising Space Florida's authorization to issue bonds; revising the revenue sources by which revenue bonds may be secured or repaid; reducing the term of years for which Space Florida may issue bonds, etc. Referred to Military and Veterans Affairs and Space; Appropriations Subcommittee on Transportation, Tourism, and Economic Development; Appropriations. **On Committee agenda-- Military and Veterans Affairs and Space, 01/22/20, 8:30 am, 37 Senate Building. Passed Military and Veterans Affairs and Space; YEAS 7 NAYS 0. Now in Appropriations Subcommittee on Transportation, Tourism, and Economic Development.**

**SB 1090: Express Lanes – (Diaz)** – Similar to HB 829 by Avila. Prohibiting express lanes and tolls on a specified state road; requiring the Department of Transportation to remove all existing express lanes and the imposition of tolls, etc. Referred to Infrastructure and Security; Appropriations Subcommittee on Transportation, Tourism, and Economic Development;

Appropriations. On Committee agenda-- Infrastructure and Security, 01/27/20, 4:00 pm, 110 Senate Building. **Passed Infrastructure and Security; YEAS 7 NAYS 0. Now in Appropriations Subcommittee on Transportation, Tourism, and Economic Development**

**SB 1148: Electric Bicycles – (Brandes)** – Identical to HB 971 by Grant. Revising definitions relating to the Florida Uniform Traffic Control Law; requiring the driver of a vehicle overtaking an electric bicycle to pass the electric bicycle at a certain distance; expanding exceptions to a prohibition on persons driving certain vehicles on sidewalks and bicycle paths; providing electric bicycle regulations; requiring electric bicycles to comply with specified provisions of law; authorizing operators to ride electric bicycles where bicycles are allowed, etc. Referred to Infrastructure and Security; Community Affairs; Rules. **On Committee agenda-- Infrastructure and Security, 02/03/20, 4:00 pm, 110 Senate Building**

**SB 1166: Broadband Internet Service – (Albritton)** – **Similar to HB 969 (Drake).** Authorizing certain funds within the State Transportation Trust Fund to be used for certain broadband infrastructure projects within or adjacent to multiuse corridors; designating the Department of Economic Opportunity, and not the Department of Management Services, as the lead state entity to facilitate the expansion of broadband Internet service in this state; creating the Florida Office of Broadband within the Division of Community Development within the Department of Economic Opportunity, etc. Filed in Senate. Referred to Commerce and Tourism; Appropriations Subcommittee on Transportation, Tourism, and Economic Development; Appropriations. On Committee agenda-- Commerce and Tourism, 01/28/20, 1:30 pm, 110 Senate Building. **Passed Commerce and Tourism; YEAS 3 NAYS 0. Now in Appropriations Subcommittee on Transportation, Tourism, and Economic Development**

**SB 1172: Transportation – (Albritton)** – Similar to HB 395 by Andrade. Revising requirements for determining the salaries of the secretary of the Department of Transportation and assistant secretaries; requiring certain contractors to be certified by the department as qualified; specifying conditions under which the limitation on liability of the department applies for personal injury, property damage, or death; authorizing the Governor to suspend payment of tolls when necessary to assist emergency evacuation, etc. Filed in Senate. Referred to Infrastructure and Security; Judiciary; Appropriations

**SB 1182: Pay-for-success Contracts – (Montford)** – Identical to HB 585 by Ausley. Authorizing a state agency to enter into a pay-for-success contract with a private entity under certain conditions, subject to an appropriation and specified language in the General Appropriations Act; authorizing cancellation of the contract under specified circumstances; specifying services and programs eligible for funding under the contract; prohibiting a private entity from viewing or receiving certain information that is otherwise confidential and exempt from public records requirements, etc. Filed in Senate. Referred to Governmental Oversight and Accountability; Appropriations Subcommittee on Agriculture, Environment, and General Government; Appropriations

**SB 1192: Tax on Aviation Fuel – (Gruters)** – Comparable to HB 6061 by Roach, McClure. Repealing provisions relating to definitions, the tax on aviation fuel, refunds for certain air carriers, administration of the tax, disclosure of price, distribution of proceeds, refunds to carriers, commercial air carrier registration and reporting, and a tax exemption for federal entities, etc. Filed in Senate. Referred to Commerce and Tourism; Finance and Tax; Appropriations. Favorable by Commerce and Tourism; YEAS 4 NAYS 1. Now in Finance and Tax.

**HB 1219: Electric Vehicles – (Toledo; Slosberg)** – Similar to SB 1230 by Brandes. Requires DOT to establish Electric Vehicle Infrastructure Grant Program; provides for distribution of grants to certain entities to install electric vehicle charging infrastructure; provides grant requirements; provides requirements for equipment installed; requires DOT to review emerging research, policies, & standards; authorizes DOT to develop model plan for local governments; requires DOT to develop master plan for charging stations; provides appropriation. APPROPRIATION: \$5,000,000. Referred to Transportation and Infrastructure Subcommittee; Transportation and Tourism Appropriations Subcommittee; State Affairs Committee

**SB 1230: Electric Vehicles – (Brandes)** – Authorizing the Department of Transportation to adopt rules; requiring that certain funds be used for specified purposes relating to the Electric Vehicle Infrastructure Grant Program, beginning in specified years; requiring the department to establish the Electric Vehicle Infrastructure Grant Program; providing for the distribution of grants to certain entities to install electric vehicle charging infrastructure; providing grant requirements, etc. APPROPRIATION: \$5,000,000. Filed in Senate. Referred to Infrastructure and Security; Appropriations Subcommittee on Transportation, Tourism, and Economic Development; Appropriations

**HB 1239: Electric Vehicle Charging State Infrastructure – (Diamond; Daley)** – Requires PSC, in consultation with other agencies, to recommend to Governor and Legislature a plan for development of electric vehicle charging station infrastructure along State Highway System; provides goals & objectives of plan; requires PSC to file status report with Governor & Legislature by specified date. Referred to Energy and Utilities Subcommittee; Government Operations and Technology Appropriations Subcommittee; State Affairs Committee.

**SB 1258: Commercial Service Airports – (Diaz)** – Similar to HB 915 by Avila. Requiring the Auditor General to conduct specified audits of certain airports; requiring members of the governing body of a large-hub commercial service airport to comply with certain financial disclosure requirements; requiring the governing body of a municipality, county, or special district that operates a commercial service airport to establish and maintain a website; requiring commercial service airports to comply with certain contracting requirements, etc. Referred to Infrastructure and Security; Community Affairs; Rules. On Committee agenda-- Infrastructure and Security, 01/27/20, 4:00 pm, 110 Senate Building. **Favorable by Infrastructure and Security; YEAS 7 NAYS 1. Now in Community Affairs.**

**HB 1315: Transportation – (Fetterhoff)** – Please see the 01/18/2020 edition of the MPOAC Legislative Newsletter for a write-up on this bill. Revises DOT organization & responsibilities; revises provisions relating to distribution of certain moneys; revises time period within which disclosure of beneficial interests must be submitted to state or certain local governmental units; revises provisions relating to notice delivery; removes scheduled repeal of certain provisions; requires vehicle operator to take certain actions when road & bridge maintenance or construction vehicle is on roadside; requires airport protection zoning regulations to require certain permit applicants to submit final valid determination from FAA; revises date by which M.P.O. must submit list of project priorities to DOT district. Referred to Transportation and Infrastructure Subcommittee; Transportation and Tourism Appropriations Subcommittee; State Affairs Committee. **On Committee agenda-- Transportation and Infrastructure Subcommittee, 02/04/20, 12:00 pm, Reed Hall**

**HB 1371: Traffic and Pedestrian Safety – (Fine)** – Identical to SB 1000 by Perry. Requires pedestrian crosswalk on public highway, street, or road which is located at any point other than at intersection with another public highway, street, or road to be controlled by traffic control signal devices & pedestrian control signals that conform to specified requirements; provides

coordination requirements for such devices & signals; requires entity with jurisdiction over public highway, street, or road with certain pedestrian crosswalk to ensure that crosswalk is controlled by coordinated traffic control signal devices & pedestrian control signals; authorizes such entity to alternatively remove any such crosswalk. Referred to Transportation and Infrastructure Subcommittee; Transportation and Tourism Appropriations Subcommittee; State Affairs Committee. On Committee agenda-- Transportation and Infrastructure Subcommittee, 01/28/20, 12:00 pm, Reed Hall. **Passed Transportation and Infrastructure Subcommittee; YEAS 13 NAYS 0. Now in Transportation and Tourism Appropriations Subcommittee.**

**SB 1332: Towing and Immobilizing Vehicles and Vessels – (Hooper)** – Similar to HB 133 by Business and Professions Subcommittee. Authorizing local governments to enact rates to tow or immobilize vessels on private property and to remove and store vessels under specified circumstances; prohibiting counties from enacting certain ordinances or rules that impose fees or charges on authorized wrecker operators or towing businesses; authorizing certain persons to place liens on vehicles or vessels to recover specified fees or charges; deleting requirements regarding notices and signs concerning the towing or removal of vehicles or vessels, etc. Referred to Community Affairs; Infrastructure and Security; Rules. On Committee agenda-- Community Affairs, 01/21/20, 4:30 pm, 301 Senate Building. Community Affairs; YEAS 3 NAYS 0. Now in Infrastructure and Security.

**SB 1416: Assaults on Specified Persons – (Perry)** – Similar to HB 951 by Beltran. Requiring public transit providers to post a specified sign concerning assaulting a transit operator; requiring public transit providers to create and implement a risk reduction program; revising the reclassification of the offense of assault on specified persons, etc. Referred to Criminal Justice; Judiciary; Rules. On Committee agenda-- Criminal Justice, 01/28/20, 1:30 pm, 37 Senate Building – **Temporarily Postponed. On Committee agenda-- Criminal Justice, 02/04/20, 9:00 am, 37 Senate Building**

**HB 6061: Aviation Fuel Tax – (Roach; McClure)** – Comparable to SB 1192 by Gruters. Deletes aviation fuel tax & provisions related to administration of the tax program. Referred to Ways and Means Committee; Appropriations Committee.

**HB 6083: Traffic Infraction Detectors – (Rodriguez, A.)** – Identical to SB 1148 by Brandes. Repeals provisions relating to Mark Wandall Traffic Safety Program & authorization to use traffic infraction detectors; repeals provisions relating to distribution of penalties, transitional implementation, & placement & installation; conforms cross-references & provisions to changes made by act. Referred to Transportation and Infrastructure Subcommittee; Appropriations Committee; State Affairs Committee. **On Committee agenda-- Transportation and Infrastructure Subcommittee, 02/04/20, 12:00 pm, Reed Hall**

**SB 7018: Electric Vehicle Charging Stations – (Infrastructure and Security Committee)** – Comparable to SB 452 by Rodriguez and Comparable to HB 943 by Daley. Requiring the Public Service Commission, in consultation with the Department of Transportation and the Office of Energy within the Department of Agriculture and Consumer Services, to develop and recommend, by a specified date, to the Governor, the President of the Senate, and the Speaker of the House of Representatives a plan for the development of electric vehicle charging station infrastructure along the State Highway System; requiring the plan to include recommendations for legislation; authorizing the plan to include other recommendations as determined by the commission, etc. Submitted as Committee Bill and Reported Favorably by Infrastructure and Security; YEAS 7 NAYS 0. Filed in Senate. Referred to Appropriations Subcommittee on Agriculture, Environment, and General Government; Appropriations



**SB 7020: Emergency Staging Areas – (Infrastructure and Security Committee) –**

Authorizing the Department of Transportation to plan, design, and construct staging areas as part of the turnpike system for the intended purpose of staging supplies for prompt provision of assistance to the public in a declared state of emergency; requiring the department, in consultation with the Division of Emergency Management, to select sites for such areas; requiring the department to give priority consideration to placement of such staging areas in specified counties, etc. Submitted as Committee Bill and Reported Favorably by Infrastructure and Security; YEAS 7 NAYS 0. Filed in Senate. Referred to Appropriations Subcommittee on Transportation, Tourism, and Economic Development; Appropriations. On Committee agenda-- Appropriations Subcommittee on Transportation, Tourism, and Economic Development, 01/29/20, 11:00 am, 110 Senate Building. **Favorable by Appropriations Subcommittee on Transportation, Tourism, and Economic Development; YEAS 8 NAYS 0 -SJ 216. Now in Appropriations.**